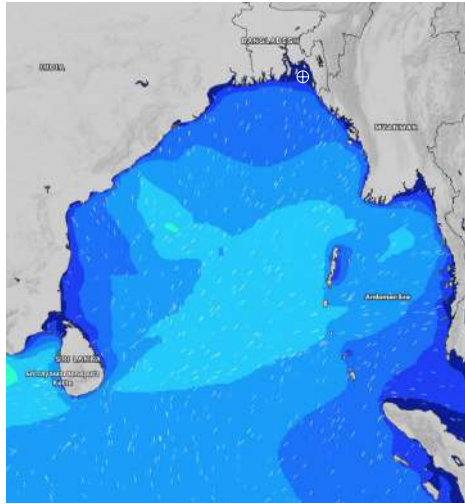


MARINE WEATHER FORECAST- NEAR AUTHORITY BUOY (Lat 22° 12' N, Long 091° 38' E)

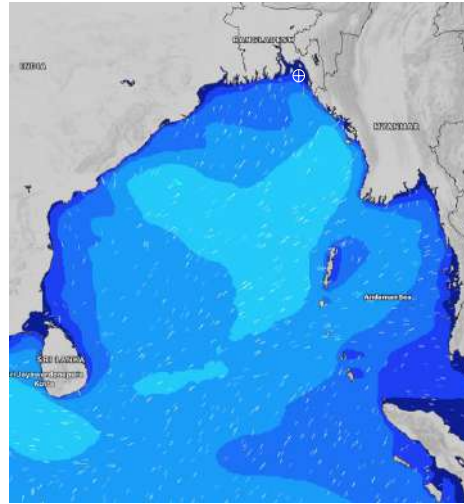
DATE : 26 June to 03 July 2024

Date	Time	Max Wind Spd (kts)	Wind Direction	Wave Ht (m)	Sea State	Baro Pressure	Air Temp		Sea Surface Temp	Humidity (%)	Prb of Rain (%)	Sea State	Wave Ht (m)
							Max	Min					
26-06-24	0001	8	SSE	0.1	1	1002	31	27	29	90%	32% (0.2 mm)	0	0
	0600	9	SE	0.1	1	1001			28	88%	20% (0.0 mm)	1	0 - 0.1
	1200	10	SW	0.2	2	1002			29	81%	18% (0.0 mm)	2	0.1 - 0.5
	1800	4	SSW	0.1	1	1001			29	87%	57% (0.4 mm)	3	0.5 - 1.25
27-06-24	0001	8	SE	0.1	1	1003	31	27	28	91%	52% (0.4 mm)	4	1.25 - 2.5
	0600	10	ESE	0.2	2	1003			28	92%	30% (0.2 mm)	5	2.5 - 4.0
	1200	7	S	0.1	1	1003			30	77%	67% (0.6 mm)	6	4.0 - 6.0
	1800	15	SE	0.1	1	1002			29	87%	51% (0.4 mm)	7	6.0 - 9.0
28-06-24	0001	27	SE	0.4	2	1004	30	27	28	88%	36% (0.2 mm)	8	9.0 - 14.0
	0600	27	SE	0.4	2	1002			28	90%	49% (0.4 mm)	9	Over 14.0
	1200	26	SSE	0.5	2	1002			29	81%	49% (0.4 mm)		
	1800	26	SSE	0.5	2	1002			29	87%	24% (0.1 mm)		
29-06-24	0001	28	SSE	0.5	2	1003	30	26	28	90%	36% (0.2 mm)		
	0600	28	SSE	0.5	2	1002			27	91%	49% (0.4 mm)		
	1200	27	S	0.6	3	1003			29	81%	49% (0.4 mm)		
	1800	25	S	0.5	2	1002			28	87%	24% (0.1 mm)		

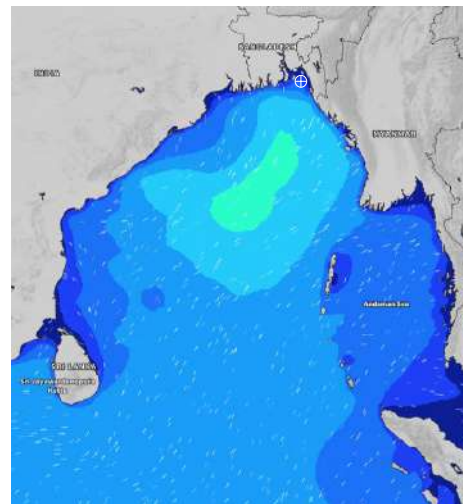
26 June 24 Wed (Probability 98%)



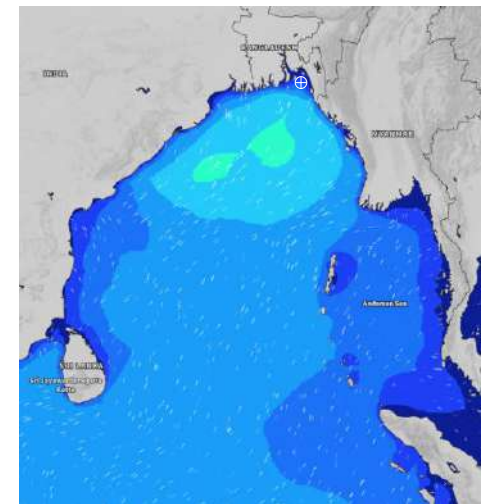
27 June 24 Thu (Probability 95%)



28 June 24 Fri (Probability 90%)



29 June 24 Sat (Probability 80%)



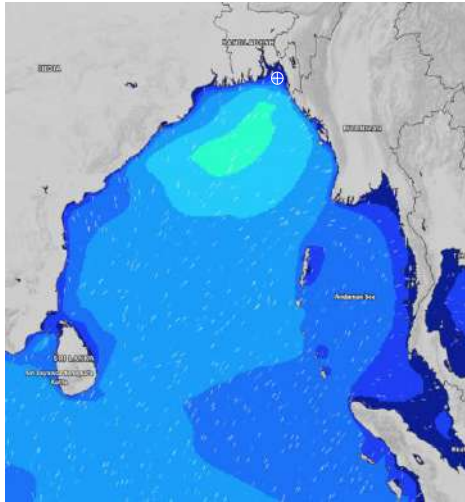
Significant wave height (m)

MARINE WEATHER FORECAST- NEAR AUTHORITY BUOY (Lat 22° 12'N, Long 091° 38'E)

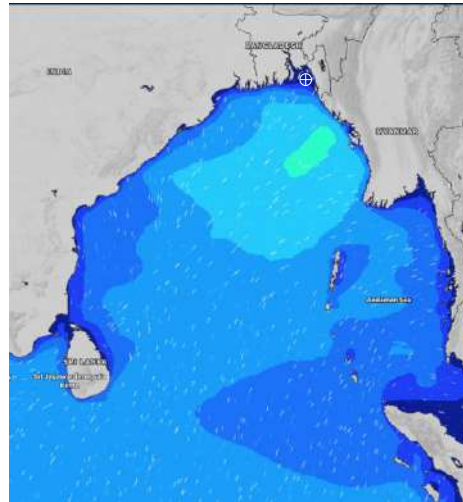
DATE : 26 June to 03 July 2024

Date	Time	Max Wind Spd (kts)	Wind Direction	Wave Ht (m)	Sea State	Baro Pressure	Air Temp		Sea Surface Temp	Humidity (%)	Prob of Rain (%)	Sea State	Wave Ht (m)
							Max	Min					
30-06-24	0001	25	SSE	0.5	2	1003	28	26	28	91%	39% (0.3 mm)	0	0
	0600	24	S	0.5	2	1001			28	93%	48% (0.4 mm)	1	0 - 0.1
	1200	24	S	0.5	2	1001			28	82%	50% (0.5 mm)	2	0.1 - 0.5
	1800	21	SSW	0.4	2	999			28	87%	20% (0.1 mm)	3	0.5 - 1.25
01-07-24	0001	13	SSW	0.2	2	1000	28	26	27	91%	46% (0.4 mm)	4	1.25 - 2.5
	0600	11	SSW	0.1	1	999			27	93%	61% (0.6 mm)	5	2.5 - 4.0
	1200	7	SW	0.1	1	999			29	81%	67% (0.6 mm)	6	4.0 - 6.0
	1800	12	S	0.1	1	999			28	86%	59% (0.4 mm)	7	6.0 - 9.0
02-07-24	0001	8	S	0.1	1	1000	28	26	27	91%	61% (0.6 mm)	8	9.0 - 14.0
	0600	9	SSW	0.1	1	999			27	93%	53% (0.4 mm)	9	Over 14.0
	1200	12	S	0.2	2	1000			28	82%	36% (0.2 mm)		
	1800	11	SSE	0.1	1	1000			28	87%	24% (0.1 mm)		
03-07-24	0001	18	S	0.3	2	1002	28	26	27	91%	61% (0.6 mm)		
	0600	19	SSW	0.4	2	1001			27	93%	53% (0.4 mm)		
	1200	21	S	0.3	2	1004			27	81%	36% (0.2 mm)		
	1800	20	SSE	0.4	2	1003			28	87%	24% (0.1 mm)		

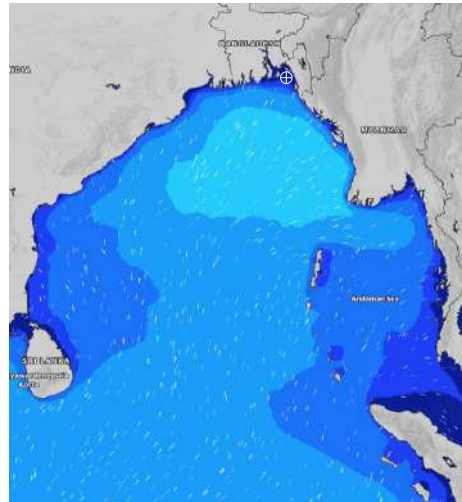
30 June 24 Sun (Probability 70%)



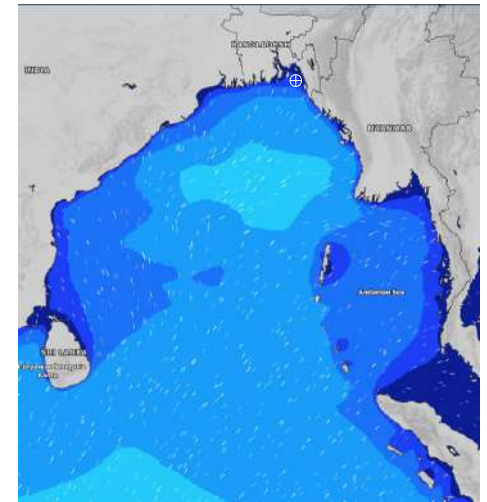
01 July 24 Mon (Probability 60%)



02 July 24 Tue (Probability 50%)



03 July 24 Wed (Probability 50%)



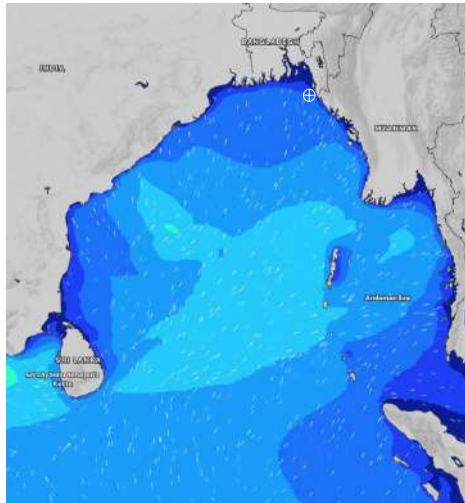
Significant wave height (m)

MARINE WEATHER FORECAST- 20 NM WEST OF ELEPHANT POINT (Lat 21° 10' N, Long 091° 42' E)

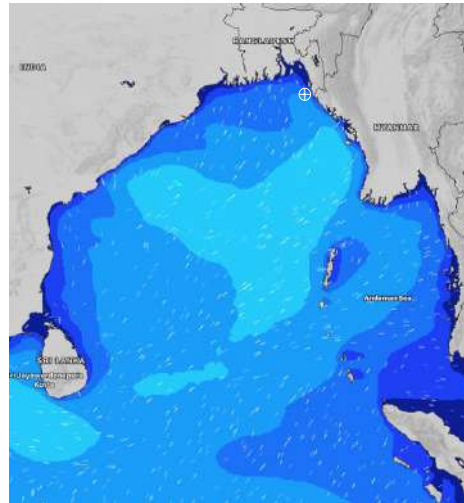
DATE : 26 June to 03 July 2024

Date	Time	Max Wind Spd (kts)	Wind Direction	Wave Ht (m)	Sea State	Baro Pressure	Air Temp		Sea Surface Temp	Humidity (%)	Prob of Rain (%)	Sea State	Wave Ht (m)
							Max	Min					
26-06-24	0001	10	SSE	1.1	3	1002	31	26	29	90%	32% (0.2 mm)	0	0
	0600	11	SE	1.1	3	1001			29	87%	12% (0.0 mm)	1	0 - 0.1
	1200	13	SSE	1.2	3	1002			29	79%	76% (1.2 mm)	2	0.1 - 0.5
	1800	11	S	1.2	3	1001			29	89%	52% (0.4 mm)	3	0.5 - 1.25
27-06-24	0001	15	SE	1.2	3	1002	30	26	29	90%	36% (0.2 mm)	4	1.25 - 2.5
	0600	19	SE	1.4	4	1002			28	91%	35% (0.2 mm)	5	2.5 - 4.0
	1200	23	SE	1.7	4	1003			29	84%	56% (0.4 mm)	6	4.0 - 6.0
	1800	27	SE	2.0	4	1001			29	87%	47% (0.4 mm)	7	6.0 - 9.0
28-06-24	0001	26	SSE	2.2	4	1004	29	26	28	90%	53% (0.4 mm)	8	9.0 - 14.0
	0600	27	SSE	2.2	4	1002			28	92%	49% (0.4 mm)	9	Over 14.0
	1200	27	SSE	2.3	4	1003			29	82%	42% (0.4 mm)		
	1800	27	SSE	2.3	4	1002			29	89%	24% (0.1 mm)		
29-06-24	0001	25	S	2.3	4	1003	29	26	28	90%	53% (0.4 mm)		
	0600	24	S	2.2	4	1003			28	93%	49% (0.4 mm)		
	1200	26	S	2.3	4	1003			29	83%	42% (0.4 mm)		
	1800	22	S	2.2	4	1003			29	88%	24% (0.1 mm)		

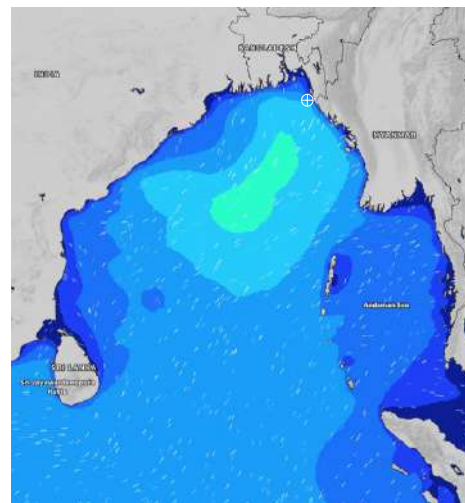
26 June 24 Wed (Probability 98%)



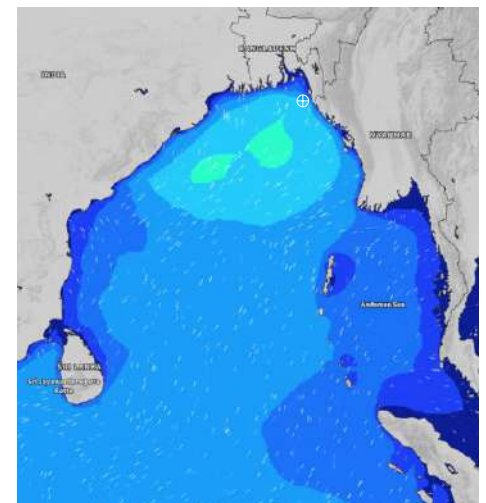
27 June 24 Thu (Probability 95%)



28 June 24 Fri (Probability 90%)



29 June 24 Sat (Probability 80%)



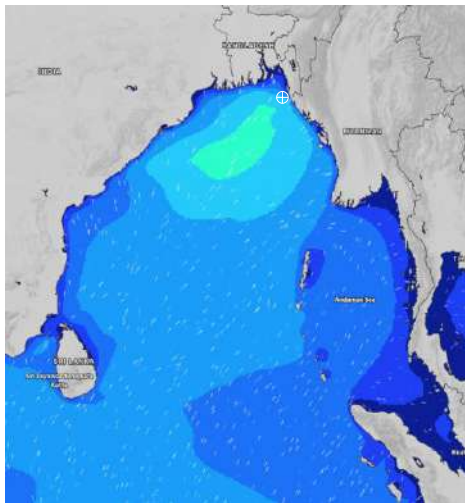
Significant wave height (m)

MARINE WEATHER FORECAST- 20 NM WEST OF ELEPHANT POINT (Lat 21° 10' N, Long 091° 42' E)

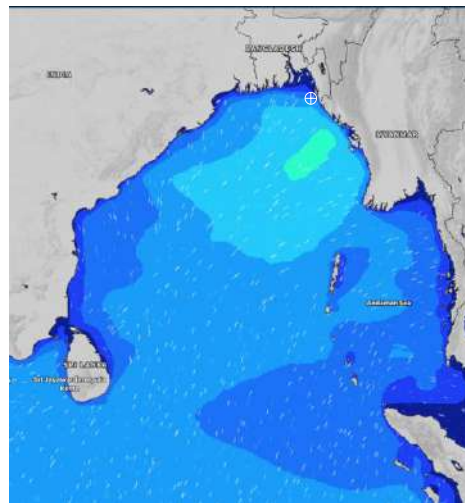
DATE : 26 June to 03 July 2024

Date	Time	Max Wind Spd (kts)	Wind Direction	Wave Ht (m)	Sea State	Baro Pressure	Air Temp		Sea Surface Temp	Humidity (%)	Prob of Rain (%)	Sea State	Wave Ht (m)
							Max	Min					
30-06-24	0001	25	S	2.3	4	1003	28	27	29	90%	45% (0.4 mm)	0	0
	0600	25	SE	2.4	4	1002			29	93%	53% (0.5 mm)	1	0 - 0.1
	1200	24	SSW	2.4	4	1002			29	84%	56% (0.4 mm)	2	0.1 - 0.5
	1800	21	NW	2.2	4	1000			29	87%	36% (0.3 mm)	3	0.5 - 1.25
01-07-24	0001	22	SE	2.1	4	1001	28	26	29	91%	45% (0.4 mm)	4	1.25 - 2.5
	0600	23	E	2.1	4	998			28	93%	53% (0.5 mm)	5	2.5 - 4.0
	1200	10	SE	1.9	4	1000			29	84%	56% (0.4 mm)	6	4.0 - 6.0
	1800	17	SE	1.8	4	999			29	88%	36% (0.3 mm)	7	6.0 - 9.0
02-07-24	0001	16	SE	1.8	4	1001	28	26	28	91%	45% (0.4 mm)	8	9.0 - 14.0
	0600	16	SSE	1.8	4	999			28	93%	53% (0.5 mm)	9	Over 14.0
	1200	19	SSE	1.9	4	1000			29	82%	56% (0.4 mm)		
	1800	6	S	1.7	4	1000			29	87%	36% (0.3 mm)		
03-07-24	0001	12	SE	1.6	4	1002	28	26	28	90%	45% (0.4 mm)		
	0600	16	SSE	1.7	4	1002			28	93%	53% (0.5 mm)		
	1200	17	SSE	1.6	4	1004			29	84%	56% (0.4 mm)		
	1800	17	S	1.6	4	1003			29	89%	36% (0.3 mm)		

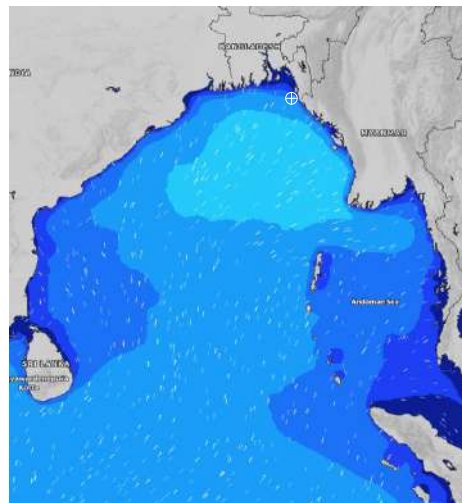
30 June 24 Sun (Probability 70%)



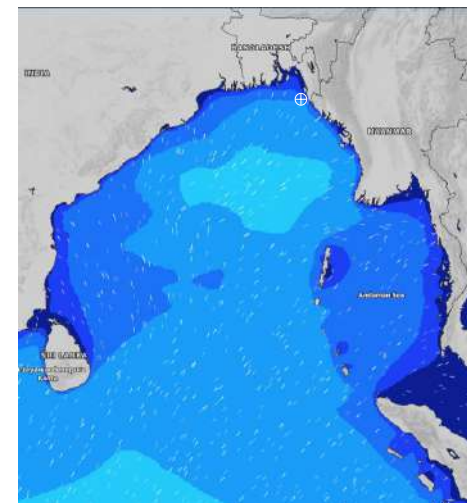
01 July 24 Mon (Probability 60%)



02 July 24 Tue (Probability 50%)



03 July 24 Wed (Probability 50%)



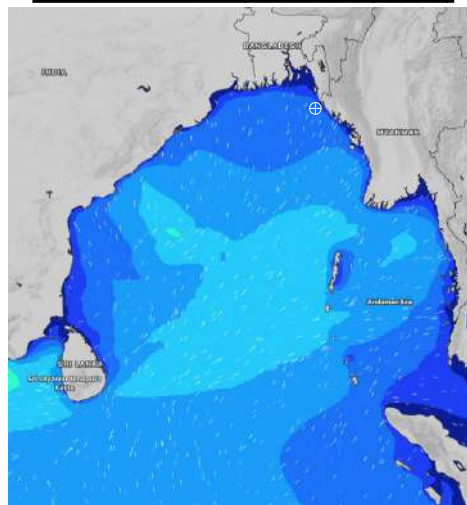
Significant wave height (m)

MARINE WEATHER FORECAST- 15 NM WEST OF ST. MARTIN'S LIGHT HOUSE (Lat 20° 37'N, Long 092° 03'E)

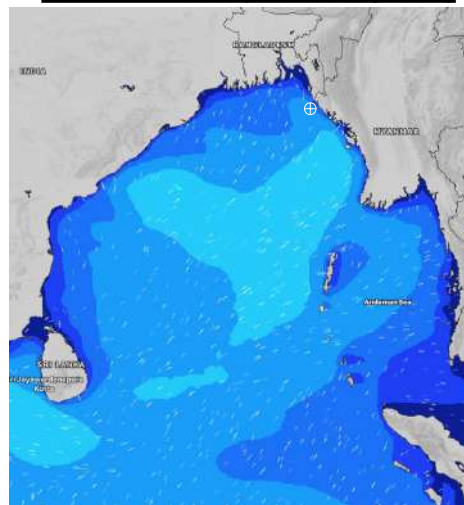
DATE : 26 June to 03 July 2024

Date	Time	Max Wind Spd (kts)	Wind Direction	Wave Ht (m)	Sea State	Baro Pressure	Air Temp		Sea Surface Temp	Humidity (%)	Prob of Rain(%)	Sea State	Wave Ht (m)
							Max	Min					
26-06-24	0001	8	SE	1.4	4	1002	30	26	29	90%	28% (0.2 mm)	0	0
	0600	9	SE	1.4	4	1001			28	89%	18% (0.0 mm)	1	0 - 0.1
	1200	13	SE	1.6	4	1002			29	84%	23% (0.0 mm)	2	0.1 - 0.5
	1800	11	SSE	1.6	4	1000			29	88%	60% (0.6 mm)	3	0.5 - 1.25
27-06-24	0001	16	SE	1.6	4	1003	29	26	29	90%	66% (0.6 mm)	4	1.25 - 2.5
	0600	20	SE	1.8	4	1001			28	92%	63% (0.6 mm)	5	2.5 - 4.0
	1200	22	SE	2.0	4	1003			29	88%	73% (0.9 mm)	6	4.0 - 6.0
	1800	25	SSE	2.3	4	1001			29	90%	71% (0.7 mm)	7	6.0 - 9.0
28-06-24	0001	25	SSE	2.6	5	1004	29	27	29	90%	47% (0.4 mm)	8	9.0 - 14.0
	0600	24	SSE	2.5	4	1002			28	93%	66% (0.6 mm)	9	Over 14.0
	1200	24	SSE	2.6	5	1004			28	85%	62% (0.6 mm)		
	1800	25	S	2.7	5	1002			29	88%	60% (0.6 mm)		
29-06-24	0001	24	S	2.7	5	1004	29	27	29	90%	69% (0.8 mm)		
	0600	24	S	2.7	5	1003			28	92%	71% (0.7 mm)		
	1200	24	S	2.7	5	1004			29	84%	45% (0.4 mm)		
	1800	23	SSW	2.8	5	1003			29	87%	32% (0.2 mm)		

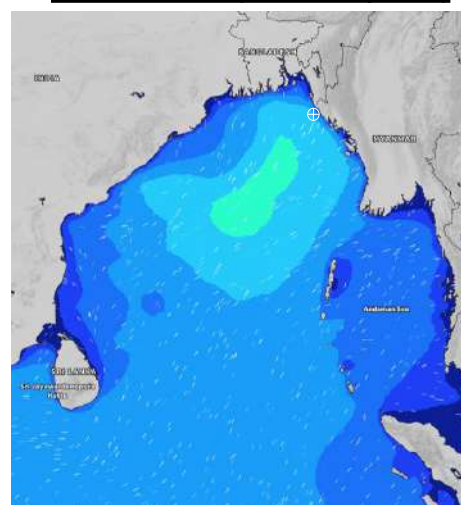
26 June 24 Wed (Probability 98%)



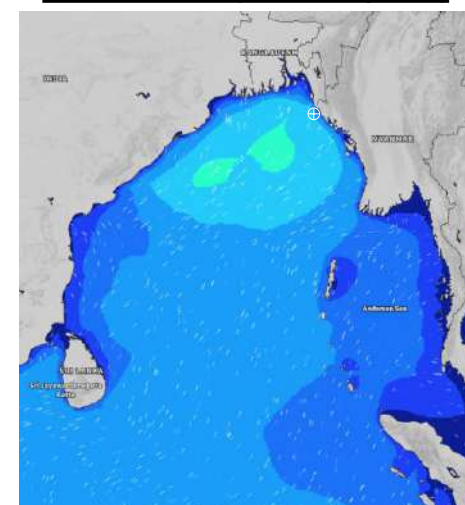
27 June 24 Thu (Probability 95%)



28 June 24 Fri (Probability 90%)



29 June 24 Sat (Probability 80%)



Significant wave height (m)

MARINE WEATHER FORECAST- 15 NM WEST OF ST. MARTIN'S LIGHT HOUSE (Lat 20° 37' N, Long 092° 03' E)

DATE : 26 June to 03 July 2024

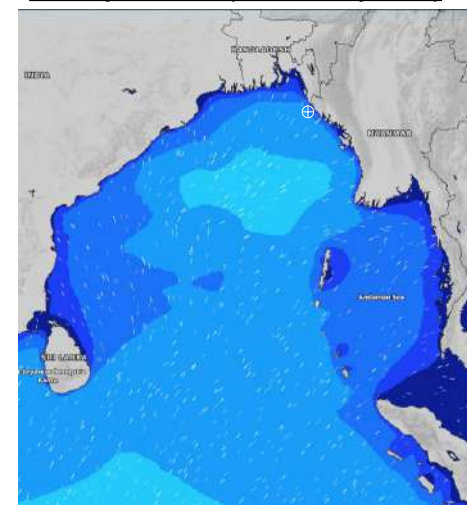
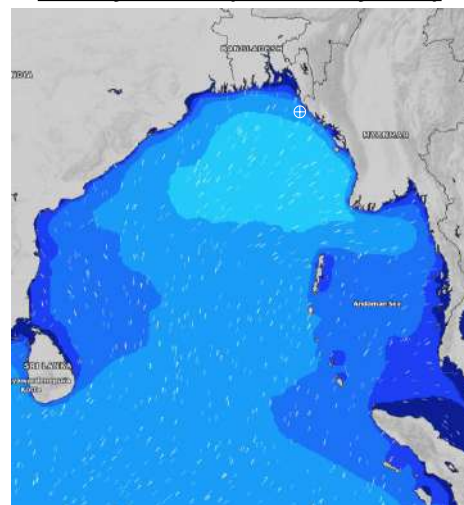
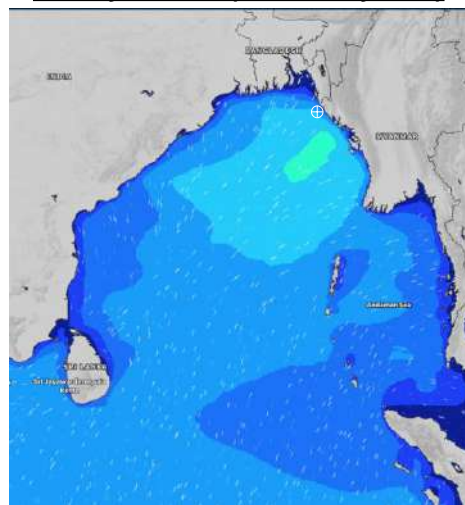
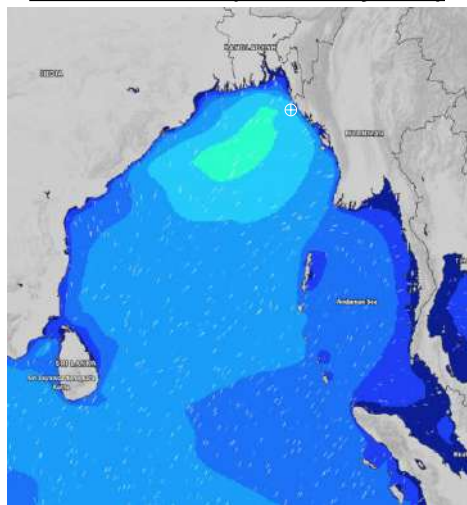
Date	Time	Max Wind Spd (kts)	Wind Direction	Wave Ht (m)	Sea State	Baro Pressure	Air Temp		Sea Surface Temp	Humidity (%)	Prob of Rain (%)	Sea State	Wave Ht (m)
							Max	Min					
30-06-24	0001	26	SSW	2.7	5	1004	28	26	29	90%	50% (0.4 mm)	0	0
	0600	25	SSW	2.8	5	1003			29	93%	17% (0.0 mm)	1	0 - 0.1
	1200	26	SSW	2.8	5	1003			29	84%	69% (0.5 mm)	2	0.1 - 0.5
	1800	25	SSW	2.8	5	1001			29	87%	30% (0.2 mm)	3	0.5 - 1.25
01-07-24	0001	23	SW	2.8	5	1002	28	26	29	90%	33% (0.2 mm)	4	1.25 - 2.5
	0600	27	SW	2.9	5	1000			29	92%	34% (0.2 mm)	5	2.5 - 4.0
	1200	25	SW	2.7	5	1001			29	85%	50% (0.4 mm)	6	4.0 - 6.0
	1800	14	W	2.4	4	1000			29	87%	71% (0.7 mm)	7	6.0 - 9.0
02-07-24	0001	19	WSW	2.4	4	1002	28	26	29	90%	47% (0.4 mm)	8	9.0 - 14.0
	0600	19	WSW	2.5	4	1000			28	93%	66% (0.6 mm)	9	Over 14.0
	1200	16	SW	2.4	4	1002			29	84%	62% (0.6 mm)		
	1800	13	SW	2.2	4	1000			29	88%	60% (0.6 mm)		
03-07-24	0001	13	WSW	2.2	4	1003	28	26	29	89%	69% (0.8 mm)		
	0600	14	WSW	2.1	4	1001			28	83%	71% (0.7 mm)		
	1200	14	SW	2.0	4	1004			29	86%	45% (0.4 mm)		
	1800	13	SW	1.9	4	1003			29	87%	32% (0.2 mm)		

30 June 24 Sun (Probability 70%)

01 July 24 Mon (Probability 60%)

02 July 24 Tue (Probability 50%)

03 July 24 Wed (Probability 50%)



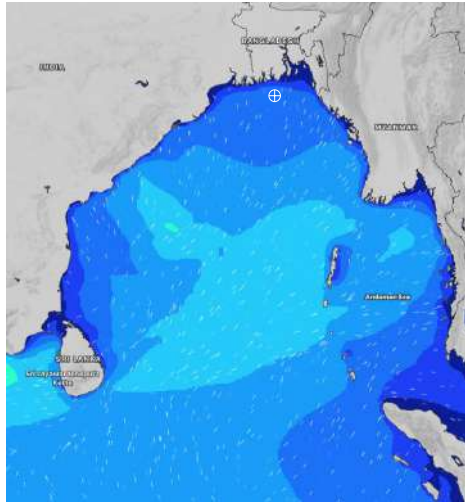
Significant wave height (m)

MARINE WEATHER FORECAST- 40 NM ESE OF PAYRA FAIRWAY (Lat 21° 07' N, Long 090° 45' E)

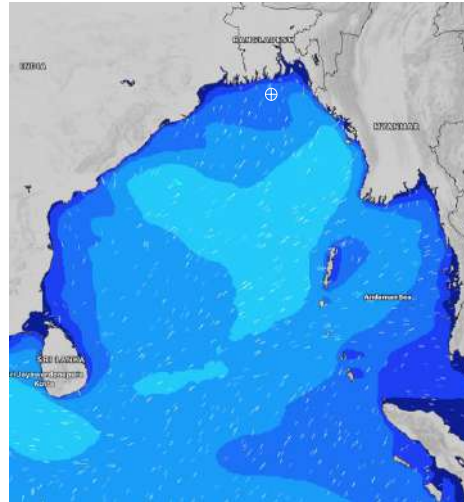
DATE : 26 June to 03 July 2024

Date	Time	Max Wind Spd (kts)	Wind Direction	Wave Ht (m)	Sea State	Baro Pressure	Air Temp		Sea Surface Temp	Humidity (%)	Prob of Rain (%)	Sea State	Wave Ht (m)
							Max	Min					
26-06-24	0001	7	SSE	1.4	4	1002	31	28	29	87%	20% (0.0 mm)	0	0
	0600	7	SSE	1.4	4	1001			29	84%	20% (0.0 mm)	1	0 - 0.1
	1200	8	SSE	1.6	4	1002			29	86%	14% (0.0 mm)	2	0.1 - 0.5
	1800	6	ESE	1.5	4	1000			29	84%	12% (0.0 mm)	3	0.5 - 1.25
27-06-24	0001	14	SE	1.5	4	1002	30	28	29	86%	24% (0.1 mm)	4	1.25 - 2.5
	0600	16	SE	1.6	4	1001			29	88%	57% (0.4 mm)	5	2.5 - 4.0
	1200	19	SE	1.8	4	1002			29	86%	53% (0.4 mm)	6	4.0 - 6.0
	1800	15	ESE	1.9	4	1000			29	83%	39% (0.3 mm)	7	6.0 - 9.0
28-06-24	0001	20	SSE	2.2	4	1002	30	28	29	87%	39% (0.3 mm)	8	9.0 - 14.0
	0600	22	SSE	2.3	4	1001			29	90%	60% (0.5 mm)	9	Over 14.0
	1200	26	SSE	2.7	5	1001			29	83%	48% (0.4 mm)		
	1800	25	S	2.9	5	1000			29	86%	41% (0.3 mm)		
29-06-24	0001	24	S	2.7	5	1001	30	27	29	87%	54% (0.5 mm)		
	0600	24	S	2.7	5	1001			29	90%	41% (0.4 mm)		
	1200	27	SSW	3.0	5	1002			29	84%	48% (0.4 mm)		
	1800	24	SSW	3.0	5	1001			29	87%	12% (0.0 mm)		

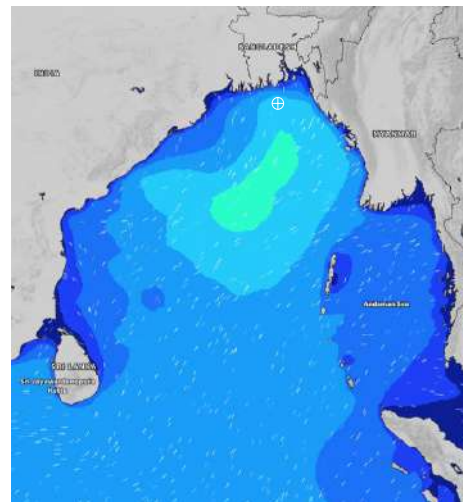
26 June 24 Wed (Probability 98%)



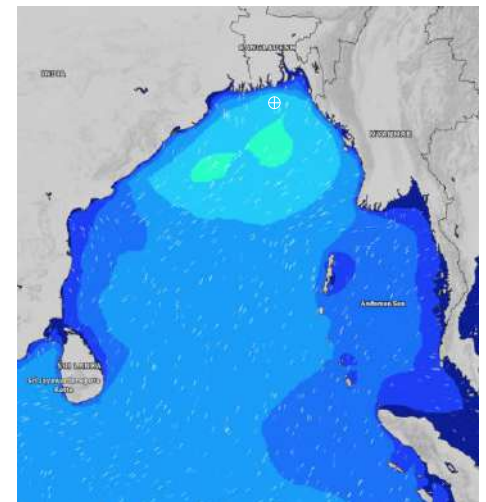
27 June 24 Thu (Probability 95%)



28 June 24 Fri (Probability 90%)



29 June 24 Sat (Probability 80%)



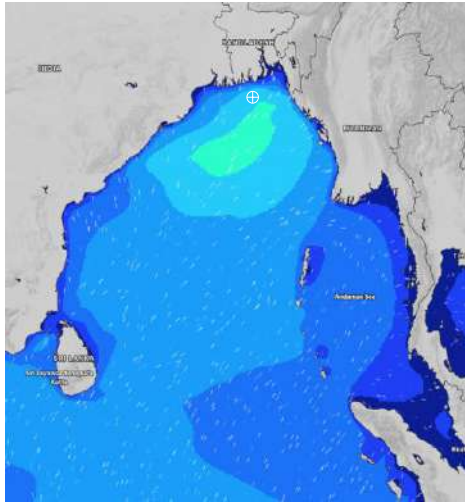
Significant wave height (m)

MARINE WEATHER FORECAST- 40 NM ESE OF PAYRA FAIRWAY (Lat 21° 07' N, Long 090° 45' E)

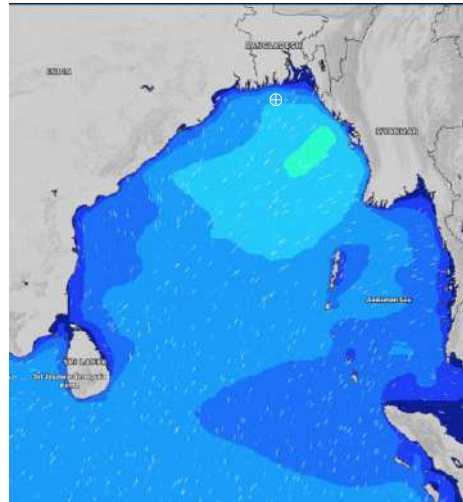
DATE : 26 June to 03 July 2024

Date	Time	Max Wind Spd (kts)	Wind Direction	Wave Ht (m)	Sea Stae	Baro Pressure	Air Temp		Sea Surface Temp	Humidity (%)	Prob of Rain (%)	Sea State	Wave Ht (m)
							Max	Min					
30-06-24	0001	27	SSW	3.0	5	1002	29	27	29	87%	66% (0.6 mm)	0	0
	0600	26	SSW	3.1	5	1001			29	90%	75% (0.8 mm)	1	0 - 0.1
	1200	26	S	3.0	5	1001			29	85%	43% (0.4 mm)	2	0.1 - 0.5
	1800	21	S	2.8	5	999			29	87%	24% (0.1 mm)	3	0.5 - 1.25
01-07-24	0001	22	SSW	2.6	5	1001	29	27	29	87%	34% (0.2 mm)	4	1.25 - 2.5
	0600	16	SSW	2.5	4	999			28	90%	44% (0.4 mm)	5	2.5 - 4.0
	1200	17	S	2.4	4	1000			29	85%	43% (0.4 mm)	6	4.0 - 6.0
	1800	20	S	2.4	4	999			29	88%	24% (0.1 mm)	7	6.0 - 9.0
02-07-24	0001	19	SSW	2.2	4	1001	28	27	29	87%	34% (0.2 mm)	8	9.0 - 14.0
	0600	18	SSW	2.3	4	999			28	90%	44% (0.4 mm)	9	Over 14.0
	1200	14	S	2.3	4	1000			29	85%	43% (0.4 mm)		
	1800	9	S	2.2	4	1000			29	88%	24% (0.1 mm)		
03-07-24	0001	18	SSW	2.2	4	1001	28	27	29	87%	34% (0.2 mm)		
	0600	17	SSW	2.2	4	1001			28	90%	44% (0.4 mm)		
	1200	13	S	1.9	4	1003			29	85%	43% (0.4 mm)		
	1800	13	S	1.9	4	1002			29	87%	24% (0.1 mm)		

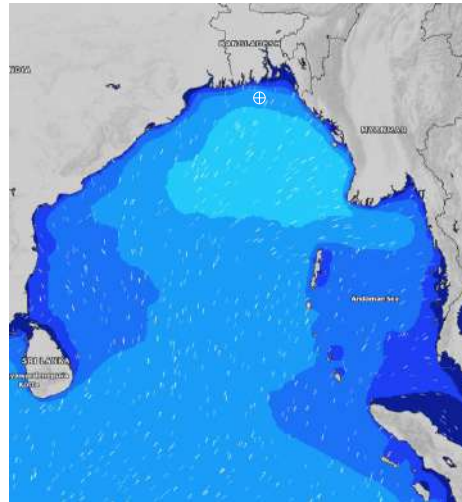
30 June 24 Sun (Probability 70%)



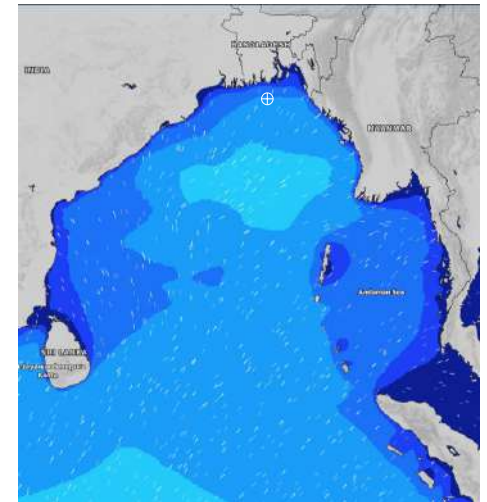
01 July 24 Mon (Probability 60%)



02 July 24 Tue (Probability 50%)



03 July 24 Wed (Probability 50%)



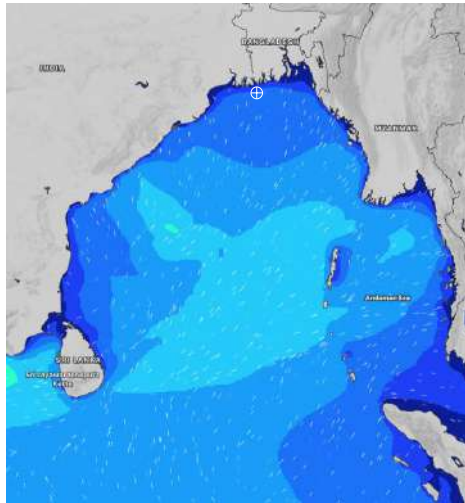
Significant wave height (m)

MARINE WEATHER FORECAST- 10 NM SOUTH OF MONGLA FAIRWAY (Lat 21° 16' N, Long 089° 34' E)

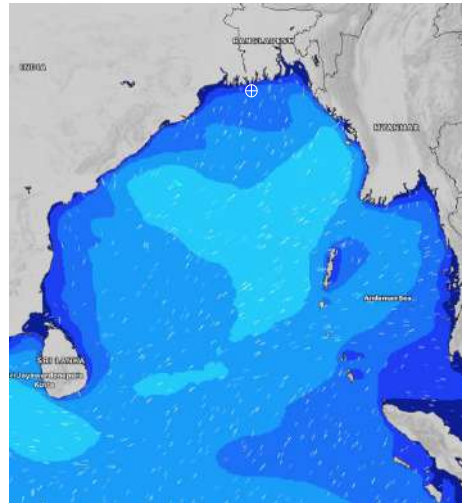
DATE : 26 June to 03 July 2024

Date	Time	Max Wind Spd (kts)	Wind Direction	Wave Ht (m)	Sea State	Baro Pressure	Air Temp		Sea Surface Temp	Humidity (%)	Prob of Rain (%)	Sea State	Wave Ht (m)
							Max	Min					
26-06-24	0001	8	S	1.4	4	1001	32	28	30	88%	21% (0.0 mm)	0	0
	0600	9	SSE	1.4	4	1001			29	82%	15% (0.0 mm)	1	0 - 0.1
	1200	7	SSE	1.5	4	1002			30	79%	48% (0.4 mm)	2	0.1 - 0.5
	1800	5	SE	1.4	4	1000			30	82%	24% (0.1 mm)	3	0.5 - 1.25
27-06-24	0001	10	SE	1.4	4	1002	31	28	30	88%	14% (0.0 mm)	4	1.25 - 2.5
	0600	11	ESE	1.4	4	1001			29	91%	41% (0.4 mm)	5	2.5 - 4.0
	1200	14	ESE	1.5	4	1002			30	81%	54% (0.5 mm)	6	4.0 - 6.0
	1800	13	ESE	1.7	4	1000			30	85%	20% (0.0 mm)	7	6.0 - 9.0
28-06-24	0001	10	SSE	1.8	4	1002	31	27	29	89%	16% (0.0 mm)	8	9.0 - 14.0
	0600	20	SSE	1.8	4	100			29	93%	24% (0.1 mm)	9	Over 14.0
	1200	20	SSE	2.3	4	1000			30	81%	48% (0.4 mm)		
	1800	16	SSW	2.3	4	999			30	84%	22% (0.0 mm)		
29-06-24	0001	21	SSW	2.3	4	1000	30	27	29	89%	19% (0.0 mm)		
	0600	18	SSW	2.4	4	1000			29	93%	52% (0.4 mm)		
	1200	22	SSW	2.6	5	1001			30	81%	60% (0.4 mm)		
	1800	22	S	2.7	5	999			30	83%	22% (0.0 mm)		

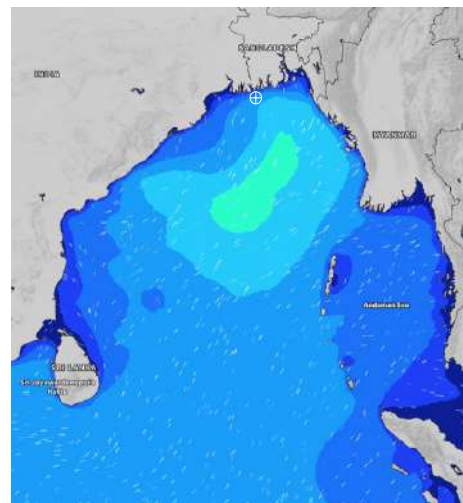
26 June 24 Wed (Probability 98%)



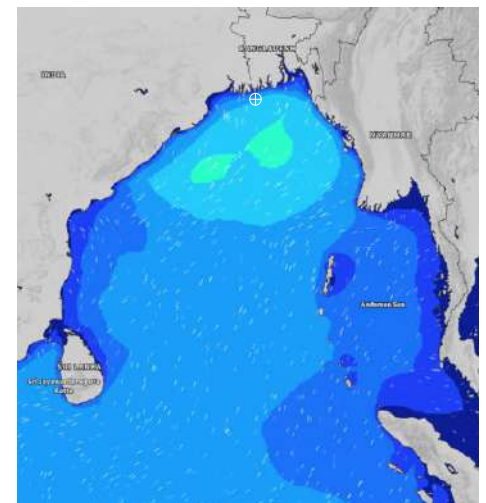
27 June 24 Thu (Probability 95%)



28 June 24 Fri (Probability 90%)



29 June 24 Sat (Probability 80%)



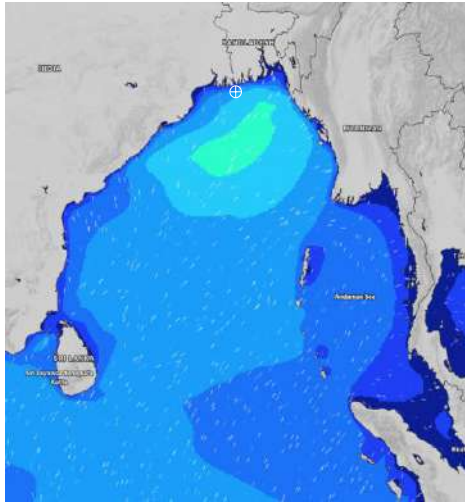
Significant wave height (m)

MARINE WEATHER FORECAST- 10 NM SOUTH OF MONGLA FAIRWAY (Lat 21° 16' N, Long 089° 34' E)

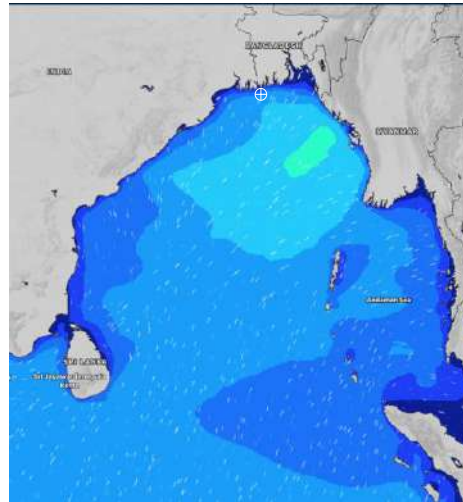
DATE : 26 June to 03 July 2024

Date	Time	Max Wind Spd (kts)	Wind Direction	Wave Ht (m)	Sea State	Baro Pressure	Air Temp		Sea Surface Temp	Humidity (%)	Prob of Rain (%)	Sea State	Wave Ht (m)
							Max	Min					
30-06-24	0001	25	SSW	2.8	5	1000	30	27	29	89%	56% (0.5 mm)	0	0
	0600	22	SSW	2.9	5	999			29	92%	62% (0.5 mm)	1	0 - 0.1
	1200	10	S	2.6	5	1000			29	81%	46% (0.4 mm)	2	0.1 - 0.5
	1800	19	S	2.4	4	999			29	85%	37% (0.2 mm)	3	0.5 - 1.25
01-07-24	0001	19	SSW	2.3	4	1000	29	27	29	89%	68% (0.6 mm)	4	1.25 - 2.5
	0600	18	SSW	2.3	4	999			28	93%	66% (0.6 mm)	5	2.5 - 4.0
	1200	15	S	2.3	4	1000			28	81%	63% (0.5 mm)	6	4.0 - 6.0
	1800	15	S	2.1	4	999			28	84%	61% (0.7 mm)	7	6.0 - 9.0
02-07-24	0001	21	SSW	2.0	4	1000	29	26	27	90%	68% (0.6 mm)	8	9.0 - 14.0
	0600	18	SSW	2.2	4	999			28	91%	66% (0.6 mm)	9	Over 14.0
	1200	12	S	2.2	4	1000			28	81%	63% (0.5 mm)		
	1800	15	S	2.0	4	999			29	84%	61% (0.7 mm)		
03-07-24	0001	17	SSW	2.1	4	1000	29	26	27	89%	68% (0.6 mm)		
	0600	13	SSW	1.9	4	1000			28	93%	66% (0.6 mm)		
	1200	13	S	1.8	4	1002			28	81%	63% (0.5 mm)		
	1800	11	S	1.7	4	1001			29	84%	61% (0.7 mm)		

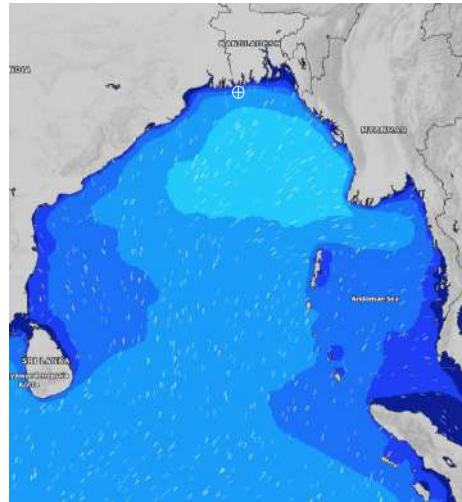
30 June 24 Sun (Probability 70%)



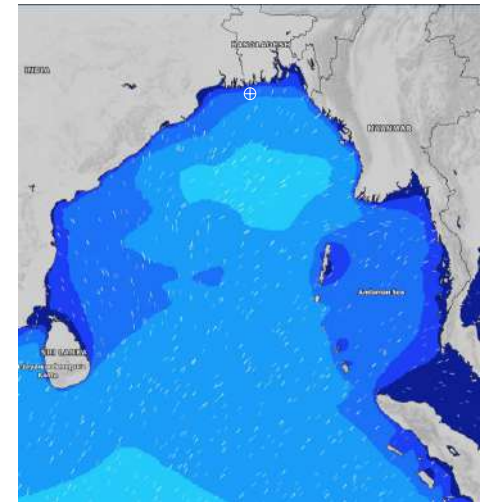
01 July 24 Mon (Probability 60%)



02 July 24 Tue (Probability 50%)



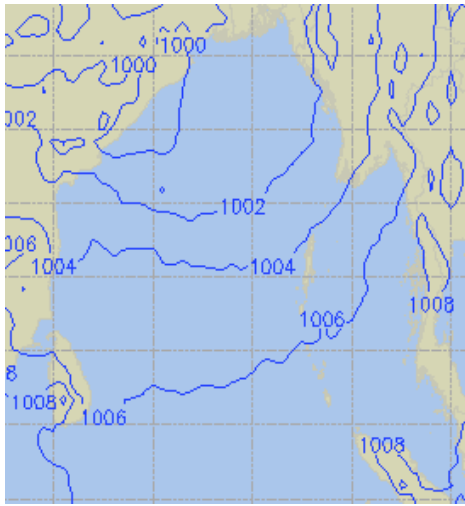
03 July 24 Wed (Probability 50%)



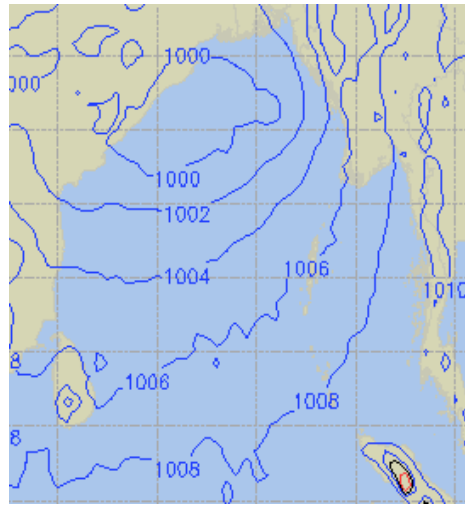
Significant wave height (m)

PREDICTED SURFACE PRESSURE FORECAST (26 June to 02 July 2024)

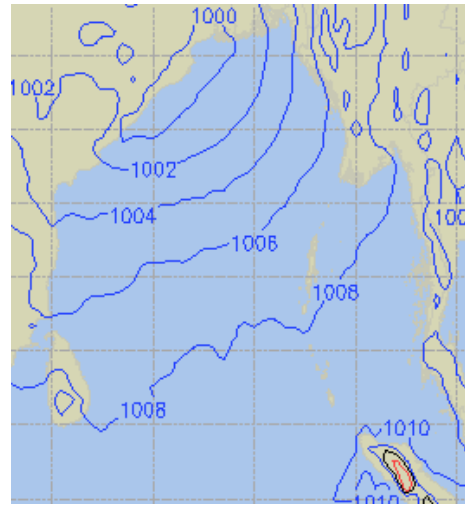
26 June 24 Wed (Probability 98%)



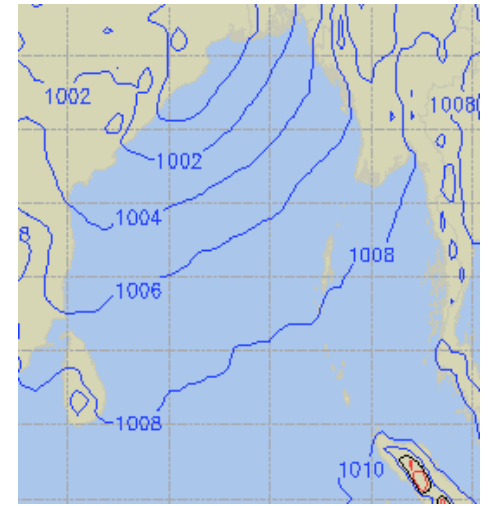
27 June 24 Thu (Probability 95%)



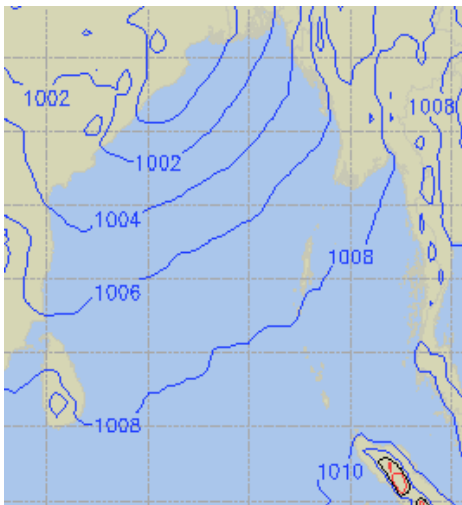
28 June 24 Fri (Probability 90%)



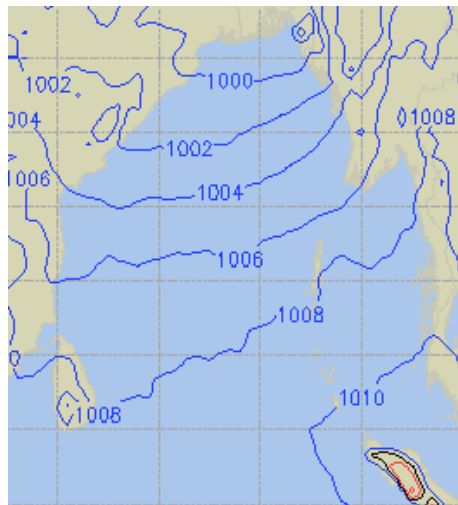
29 June 24 Sat (Probability 80%)



30 June 24 Sun (Probability 70%)



01 July 24 Mon (Probability 60%)



02 July 24 Tue (Probability 50%)

