

MARINE WEATHER FORECAST- NEAR AUTHORITY BUOY (Lat 22° 12' N, Long 091° 38' E)

DATE : 25 April to 02 May 2024

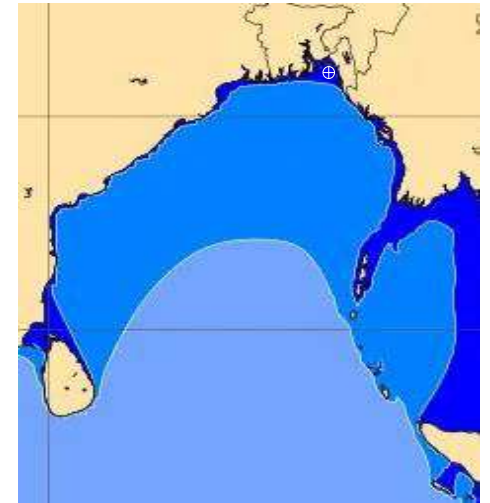
Date	Time	Max Wind Spd (kts)	Wind Direction	Wave Ht (m)	Sea State	Baro Pressure	Air Temp		Sea Surface Temp	Humidity (%)	Prob of Rain (%)	Sea State	Wave Ht (m)
							Max	Min					
25-04-24	0001	15	SSE	0.3	2	1006	35	27	29	85%	15% (0.0 mm)	0	0
	0600	13	SSE	0.3	2	1007			28	91%	14% (0.0 mm)	1	0 - 0.1
	1200	12	SSW	0.3	2	1008			30	60%	13% (0.0 mm)	2	0.1 - 0.5
	1800	16	SSW	0.3	2	1004			29	82%	10% (0.0 mm)	3	0.5 - 1.25
26-04-24	0001	16	S	0.3	2	1004	35	27	29	83%	14% (0.0 mm)	4	1.25 - 2.5
	0600	12	S	0.2	2	1006			28	91%	12% (0.0 mm)	5	2.5 - 4.0
	1200	13	SSW	0.3	2	1007			30	63%	16% (0.0 mm)	6	4.0 - 6.0
	1800	20	SSW	0.4	2	1004			29	83%	12% (0.0 mm)	7	6.0 - 9.0
27-04-24	0001	17	S	0.4	2	1004	35	27	29	80%	14% (0.0 mm)	8	9.0 - 14.0
	0600	14	S	0.3	2	1006			28	91%	15% (0.0 mm)	9	Over 14.0
	1200	17	SSW	0.4	2	1007			30	64%	14% (0.0 mm)		
	1800	16	S	0.3	2	1005			29	82%	10% (0.0 mm)		
28-04-24	0001	17	SSE	0.3	2	1005	35	27	29	83%	12% (0.0 mm)		
	0600	14	SSE	0.3	2	1007			28	95%	13% (0.0 mm)		
	1200	15	SW	0.3	2	1006			30	61%	15% (0.0 mm)		
	1800	16	SSW	0.4	2	1005			29	86%	14% (0.0 mm)		

25 April 24 Thu (Probability 98%)

26 April 24 Fri (Probability 95%)

27 April 24 Sat (Probability 90%)

28 April 24 Sun (Probability 80%)



Significant wave height (m)

MARINE WEATHER FORECAST- NEAR AUTHORITY BUOY (Lat 22° 12'N, Long 091° 38'E)

DATE : 25 April to 02 May 2024

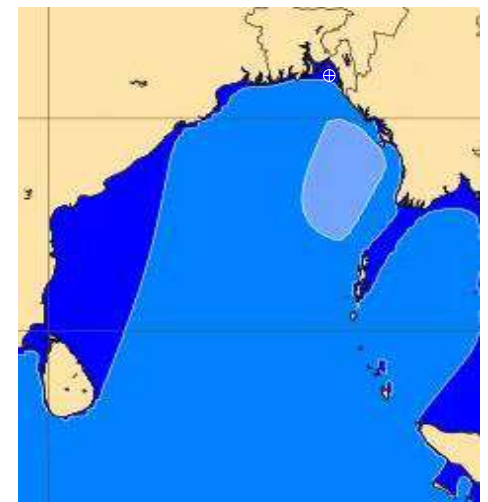
Date	Time	Max Wind Spd (kts)	Wind Direction	Wave Ht (m)	Sea State	Baro Pressure	Air Temp		Sea Surface Temp	Humidity (%)	Prob of Rain (%)	Sea State	Wave Ht (m)
							Max	Min					
29-04-24	0001	23	S	0.4	2	1005	35	27	29	81%	15% (0.0 mm)	0	0
	0600	16	SSE	0.3	2	1007			28	93%	10% (0.0 mm)	1	0 - 0.1
	1200	20	SSW	0.4	2	1008			30	62%	11% (0.0 mm)	2	0.1 - 0.5
	1800	21	SSW	0.5	2	1004			29	84%	12% (0.0 mm)	3	0.5 - 1.25
30-04-24	0001	19	SSE	0.4	2	1005	35	27	29	81%	13% (0.0 mm)	4	1.25 - 2.5
	0600	18	SSE	0.4	2	1004			28	92%	10% (0.0 mm)	5	2.5 - 4.0
	1200	22	SSW	0.5	2	1006			30	63%	11% (0.0 mm)	6	4.0 - 6.0
	1800	24	S	0.5	2	1002			29	85%	12% (0.0 mm)	7	6.0 - 9.0
01-05-24	0001	22	S	0.5	2	1004	35	27	29	82%	11% (0.0 mm)	8	9.0 - 14.0
	0600	21	SSE	0.4	2	1004			28	91%	13% (0.0 mm)	9	Over 14.0
	1200	20	SSW	0.5	2	1005			30	63%	12% (0.0 mm)		
	1800	23	S	0.5	2	1002			29	80%	10% (0.0 mm)		
02-05-24	0001	21	SSE	0.4	2	1003	35	27	29	82%	11% (0.0 mm)		
	0600	19	SSE	0.4	2	1004			28	95%	12% (0.0 mm)		
	1200	20	SE	0.5	2	1003			30	63%	13% (0.0 mm)		
	1800	22	SSW	0.5	2	1002			29	81%	12% (0.0 mm)		

29 April 24 Mon (Probability 70%)

30 April 24 Tue (Probability 60%)

01 May 24 Wed (Probability 50%)

02 May 24 Thu (Probability 50%)



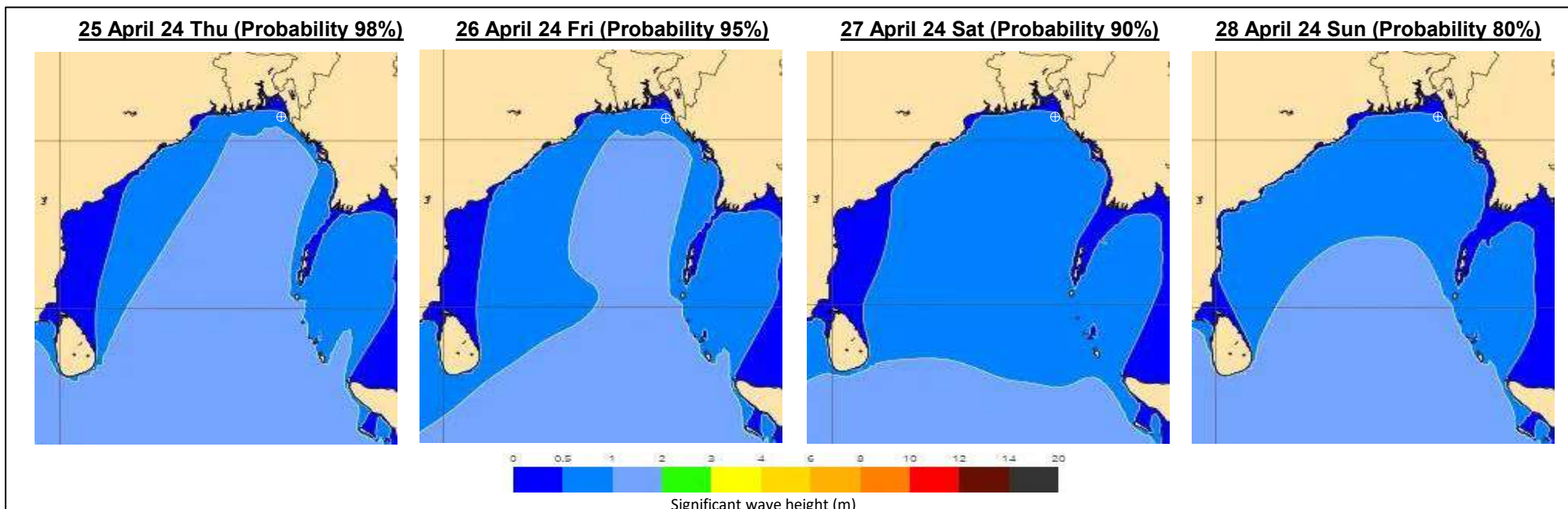
0 0.5 1 2 3 4 6 8 10 12 14 20

Significant wave height (m)

MARINE WEATHER FORECAST- 20 NM WEST OF ELEPHANT POINT (Lat 21° 10' N, Long 091° 42' E)

DATE : 25 April to 02 May 2024

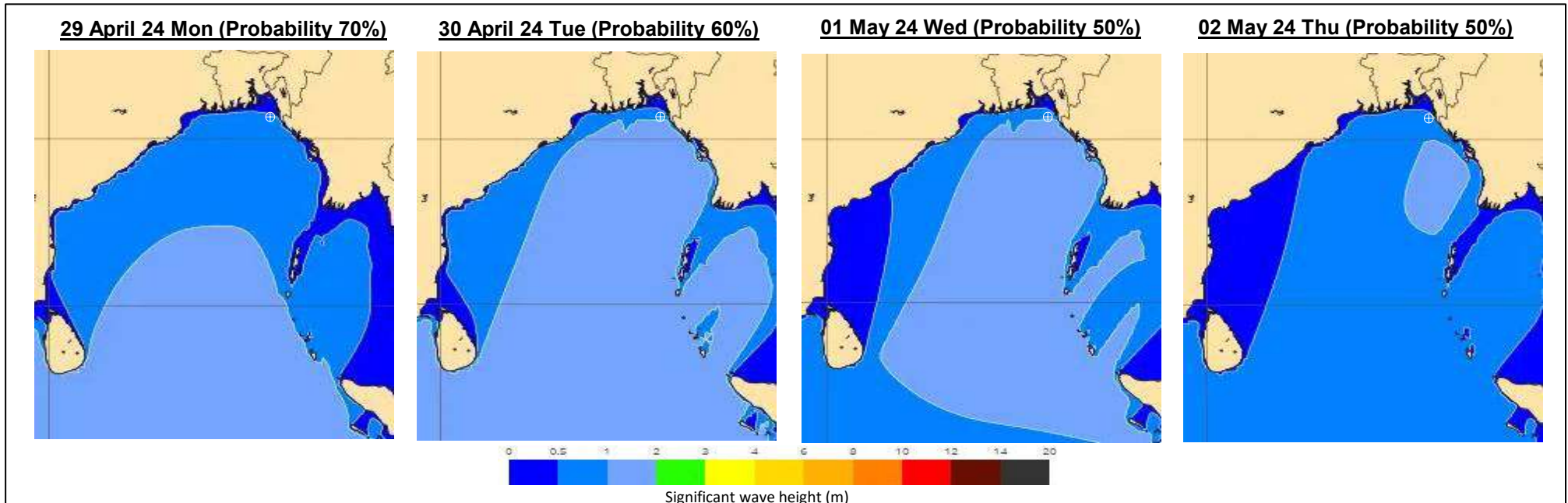
Date	Time	Max Wind Spd (kts)	Wind Direction	Wave Ht (m)	Sea State	Baro Pressure	Air Temp		Sea Surface Temp	Humidity (%)	Prob of Rain (%)	Sea State	Wave Ht (m)
							Max	Min					
25-04-24	0001	8	SSE	1.0	3	1007	35	27	29	85%	13% (0.0 mm)	0	0
	0600	9	S	1.0	3	1007			28	93%	14% (0.0 mm)	1	0 - 0.1
	1200	10	SSW	1.0	3	1008			30	61%	12% (0.0 mm)	2	0.1 - 0.5
	1800	17	SW	1.1	3	1004			29	85%	15% (0.0 mm)	3	0.5 - 1.25
26-04-24	0001	11	SSW	1.1	3	1005	35	27	29	82%	14% (0.0 mm)	4	1.25 - 2.5
	0600	8	SW	1.1	3	1006			28	93%	13% (0.0 mm)	5	2.5 - 4.0
	1200	9	SSW	1.1	3	1007			30	64%	12% (0.0 mm)	6	4.0 - 6.0
	1800	12	SW	1.1	3	1005			29	81%	15% (0.0 mm)	7	6.0 - 9.0
27-04-24	0001	13	SSW	1.1	3	1004	35	27	29	82%	14% (0.0 mm)	8	9.0 - 14.0
	0600	9	SSW	1.1	3	1007			28	94%	11% (0.0 mm)	9	Over 14.0
	1200	15	S	1.2	3	1007			30	63%	10% (0.0 mm)		
	1800	13	SSW	1.2	3	1005			29	85%	12% (0.0 mm)		
28-04-24	0001	15	S	1.2	3	1005	35	27	29	82%	14% (0.0 mm)		
	0600	11	SSW	1.1	3	1007			28	96%	12% (0.0 mm)		
	1200	12	S	1.1	3	1007			30	63%	13% (0.0 mm)		
	1800	14	SSW	1.2	3	1005			29	84%	10% (0.0 mm)		



MARINE WEATHER FORECAST- 20 NM WEST OF ELEPHANT POINT (Lat 21° 10' N, Long 091° 42' E)

DATE : 25 April to 02 May 2024

Date	Time	Max Wind Spd (kts)	Wind Direction	Wave Ht (m)	Sea State	Baro Pressure	Air Temp		Sea Surface Temp	Humidity (%)	Prob of Rain (%)	Sea State	Wave Ht (m)
							Max	Min					
29-04-24	0001	17	S	1.2	3	1006	35	27	29	85%	13% (0.0 mm)	0	0
	0600	12	S	1.2	3	1008			28	93%	15% (0.0 mm)	1	0 - 0.1
	1200	14	S	1.2	3	1008			30	66%	14% (0.0 mm)	2	0.1 - 0.5
	1800	18	SSW	1.2	3	1005			29	81%	12% (0.0 mm)	3	0.5 - 1.25
30-04-24	0001	15	S	1.3	4	1005	35	27	29	82%	15% (0.0 mm)	4	1.25 - 2.5
	0600	14	S	1.4	4	1005			28	94%	13% (0.0 mm)	5	2.5 - 4.0
	1200	18	S	1.5	4	1006			30	63%	10% (0.0 mm)	6	4.0 - 6.0
	1800	18	SSW	1.5	4	1003			29	82%	12% (0.0 mm)	7	6.0 - 9.0
01-05-24	0001	20	S	1.7	4	1004	35	27	29	85%	15% (0.0 mm)	8	9.0 - 14.0
	0600	16	S	1.7	4	1004			28	94%	14% (0.0 mm)	9	Over 14.0
	1200	19	S	1.7	4	1005			30	61%	11% (0.0 mm)		
	1800	19	SSW	1.6	4	1003			29	83%	12% (0.0 mm)		
02-05-24	0001	19	S	1.6	4	1003	35	27	29	82%	13% (0.0 mm)		
	0600	17	S	1.6	4	1004			28	95%	15% (0.0 mm)		
	1200	18	SE	1.7	4	1003			30	64%	14% (0.0 mm)		
	1800	20	SSW	1.7	4	1002			29	86%	12% (0.0 mm)		



MARINE WEATHER FORECAST- 15 NM WEST OF ST. MARTIN'S LIGHT HOUSE (Lat 20° 37' N, Long 092° 03' E)

DATE : 25 April to 02 May 2024

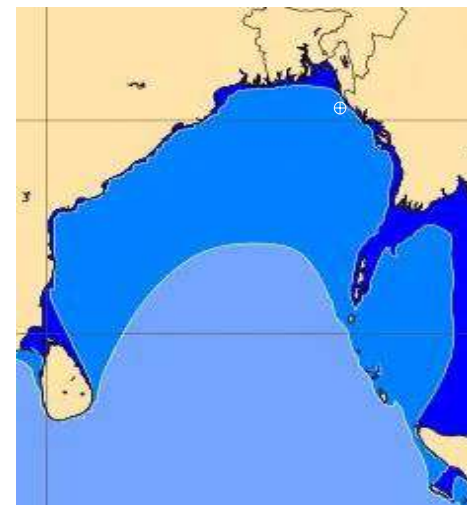
Date	Time	Max Wind Spd (kts)	Wind Direction	Wave Ht (m)	Sea State	Baro Pressure	Air Temp		Sea Surface Temp	Humidity (%)	Prob of Rain(%)	Sea State	Wave Ht (m)
							Max	Min					
25-04-24	0001	5	SSW	1.2	3	1007	35	27	29	86%	15% (0.0 mm)	0	0
	0600	5	SSW	1.2	3	1006			28	93%	13% (0.0 mm)	1	0 - 0.1
	1200	6	S	1.2	3	1008			30	62%	14% (0.0 mm)	2	0.1 - 0.5
	1800	15	WSW	1.3	4	1005			29	84%	11% (0.0 mm)	3	0.5 - 1.25
26-04-24	0001	6	WSW	1.3	4	1006	35	27	29	81%	12% (0.0 mm)	4	1.25 - 2.5
	0600	7	SW	1.3	4	1006			28	95%	15% (0.0 mm)	5	2.5 - 4.0
	1200	5	SW	1.3	4	1008			30	63%	14% (0.0 mm)	6	4.0 - 6.0
	1800	10	WSW	1.4	4	1005			29	82%	12% (0.0 mm)	7	6.0 - 9.0
27-04-24	0001	11	WSW	1.4	4	1005	35	27	29	85%	13% (0.0 mm)	8	9.0 - 14.0
	0600	7	SW	1.4	4	1006			28	94%	15% (0.0 mm)	9	Over 14.0
	1200	8	SSW	1.4	4	1008			30	62%	14% (0.0 mm)		
	1800	13	SW	1.4	4	1005			29	85%	12% (0.0 mm)		
28-04-24	0001	9	SSW	1.4	4	1006	35	27	29	84%	13% (0.0 mm)		
	0600	8	SW	1.4	4	1006			28	91%	15% (0.0 mm)		
	1200	7	SW	1.4	4	1008			30	62%	14% (0.0 mm)		
	1800	9	SSW	1.4	4	1005			29	83%	12% (0.0 mm)		

25 April 24 Thu (Probability 98%)

26 April 24 Fri (Probability 95%)

27 April 24 Sat (Probability 90%)

28 April 24 Sun (Probability 80%)

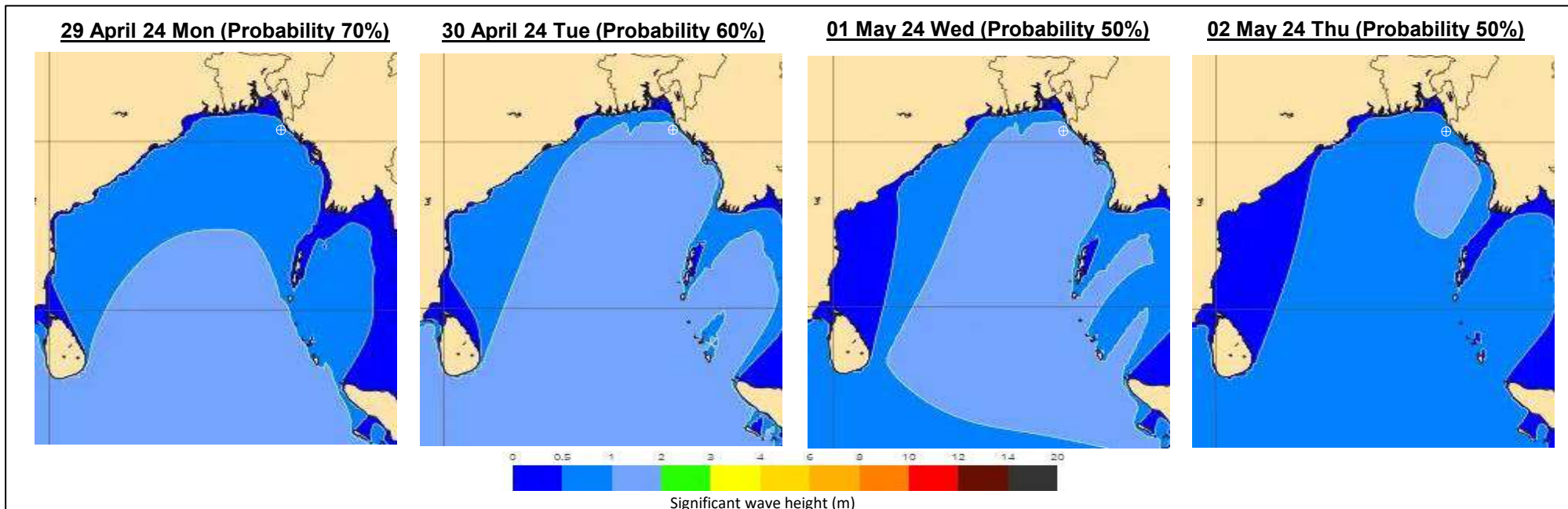


Significant wave height (m)

MARINE WEATHER FORECAST- 15 NM WEST OF ST. MARTIN'S LIGHT HOUSE (Lat 20° 37' N, Long 092° 03' E)

DATE : 25 April to 02 May 2024

Date	Time	Max Wind Spd (kts)	Wind Direction	Wave Ht (m)	Sea State	Baro Pressure	Air Temp		Sea Surface Temp	Humidity (%)	Prob of Rain (%)	Sea State	Wave Ht (m)
							Max	Min					
29-04-24	0001	7	S	1.4	4	1008	35	27	29	82%	13% (0.0 mm)	0	0
	0600	12	SSW	1.4	4	1007			28	94%	14% (0.0 mm)	1	0 - 0.1
	1200	10	S	1.4	4	1009			30	63%	11% (0.0 mm)	2	0.1 - 0.5
	1800	14	SW	1.4	4	1006			29	86%	12% (0.0 mm)	3	0.5 - 1.25
30-04-24	0001	16	SSW	1.5	4	1006	35	27	29	82%	15% (0.0 mm)	4	1.25 - 2.5
	0600	10	SSW	1.6	4	1005			28	95%	10% (0.0 mm)	5	2.5 - 4.0
	1200	13	SSW	1.7	4	1007			30	61%	12% (0.0 mm)	6	4.0 - 6.0
	1800	15	SSW	1.8	4	1004			29	86%	11% (0.0 mm)	7	6.0 - 9.0
01-05-24	0001	17	S	1.9	4	1005	35	27	29	80%	13% (0.0 mm)	8	9.0 - 14.0
	0600	12	SSW	1.8	4	1004			28	93%	15% (0.0 mm)	9	Over 14.0
	1200	14	S	1.8	4	1007			30	65%	14% (0.0 mm)		
	1800	15	SSW	1.8	4	1004			29	84%	13% (0.0 mm)		
02-05-24	0001	17	SSW	1.9	4	1005	35	27	29	81%	12% (0.0 mm)		
	0600	13	SSW	1.8	4	1004			28	93%	14% (0.0 mm)		
	1200	15	S	1.8	4	1006			30	65%	13% (0.0 mm)		
	1800	16	SSW	1.9	4	1004			29	82%	15% (0.0 mm)		



MARINE WEATHER FORECAST- 40 NM ESE OF PAYRA FAIRWAY (Lat 21° 07' N, Long 090° 45' E)

DATE : 25 April to 02 May 2024

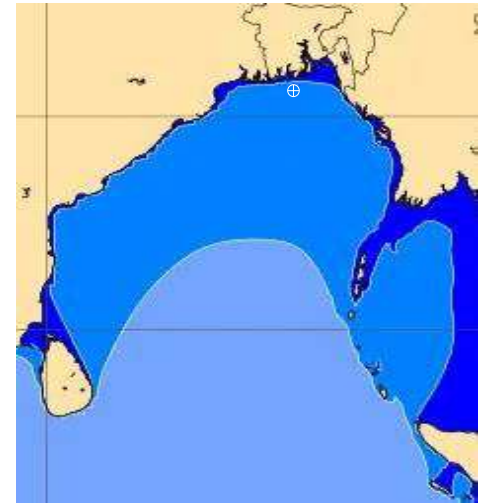
Date	Time	Max Wind Spd (kts)	Wind Direction	Wave Ht (m)	Sea State	Baro Pressure	Air Temp		Sea Surface Temp	Humidity (%)	Prob of Rain (%)	Sea State	Wave Ht (m)
							Max	Min					
25-04-24	0001	15	SW	1.4	4	1006	36	27	29	84%	15% (0.0 mm)	0	0
	0600	12	SSW	1.4	4	1006			28	93%	14% (0.0 mm)	1	0 - 0.1
	1200	11	SSW	1.3	4	1007			30	65%	13% (0.0 mm)	2	0.1 - 0.5
	1800	19	SSW	1.4	4	1004			29	84%	16% (0.0 mm)	3	0.5 - 1.25
26-04-24	0001	16	SW	1.5	4	1004	36	27	30	80%	12% (0.0 mm)	4	1.25 - 2.5
	0600	13	SW	1.5	4	1006			29	92%	14% (0.0 mm)	5	2.5 - 4.0
	1200	13	SSW	1.5	4	1007			30	63%	10% (0.0 mm)	6	4.0 - 6.0
	1800	16	SW	1.5	4	1005			30	86%	13% (0.0 mm)	7	6.0 - 9.0
27-04-24	0001	20	SSW	1.6	4	1004	36	27	30	82%	15% (0.0 mm)	8	9.0 - 14.0
	0600	12	SW	1.7	4	1006			29	94%	14% (0.0 mm)	9	Over 14.0
	1200	17	SSW	1.7	4	1007			30	62%	11% (0.0 mm)		
	1800	18	SSW	1.7	4	1005			30	85%	12% (0.0 mm)		
28-04-24	0001	21	SSW	1.8	4	1004	36	27	30	83%	13% (0.0 mm)		
	0600	17	SSW	1.8	4	1006			29	92%	15% (0.0 mm)		
	1200	15	SW	1.7	4	1007			30	65%	14% (0.0 mm)		
	1800	17	SSW	1.8	4	1005			30	84%	16% (0.0 mm)		

25 April 24 Thu (Probability 98%)

26 April 24 Fri (Probability 95%)

27 April 24 Sat (Probability 90%)

28 April 24 Sun (Probability 80%)



Significant wave height (m)

MARINE WEATHER FORECAST- 40 NM ESE OF PAYRA FAIRWAY (Lat 21° 07' N, Long 090° 45' E)

DATE : 25 April to 02 May 2024

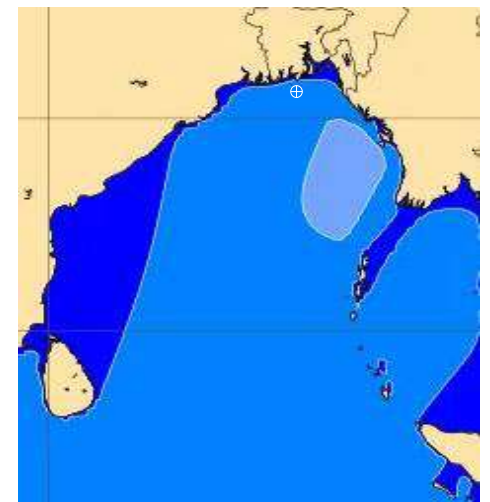
Date	Time	Max Wind Spd (kts)	Wind Direction	Wave Ht (m)	Sea State	Baro Pressure	Air Temp		Sea Surface Temp	Humidity (%)	Prob of Rain (%)	Sea State	Wave Ht (m)
							Max	Min					
29-04-24	0001	20	SSW	1.7	4	1006	36	27	29	83%	14% (0.0 mm)	0	0
	0600	14	SW	1.7	4	1007			28	94%	12% (0.0 mm)	1	0 - 0.1
	1200	15	SSW	1.6	4	1008			30	61%	15% (0.0 mm)	2	0.1 - 0.5
	1800	20	SSW	1.8	4	1004			29	83%	14% (0.0 mm)	3	0.5 - 1.25
30-04-24	0001	25	SSW	2.0	4	1004	36	27	29	81%	13% (0.0 mm)	4	1.25 - 2.5
	0600	15	SSW	1.8	4	1004			28	93%	15% (0.0 mm)	5	2.5 - 4.0
	1200	19	SSW	1.8	4	1005			30	66%	11% (0.0 mm)	6	4.0 - 6.0
	1800	20	SSW	2.0	4	1002			29	82%	12% (0.0 mm)	7	6.0 - 9.0
01-05-24	0001	20	SSW	2.0	4	1003	36	27	29	84%	14% (0.0 mm)	8	9.0 - 14.0
	0600	16	SSW	1.9	4	1004			28	91%	10% (0.0 mm)	9	Over 14.0
	1200	19	SSW	1.9	4	1005			30	64%	13% (0.0 mm)		
	1800	20	SSW	2.0	4	1002			29	86%	15% (0.0 mm)		
02-05-24	0001	19	SSW	2.0	4	1003	36	27	29	85%	12% (0.0 mm)		
	0600	17	S	1.8	4	1003			28	92%	15% (0.0 mm)		
	1200	20	SSW	2.0	4	1004			30	64%	14% (0.0 mm)		
	1800	22	SSW	2.0	4	1002			29	83%	13% (0.0 mm)		

29 April 24 Mon (Probability 70%)

30 April 24 Tue (Probability 60%)

01 May 24 Wed (Probability 50%)

02 May 24 Thu (Probability 50%)



0 0.5 1 2 3 4 6 8 10 12 14 20



Significant wave height (m)

MARINE WEATHER FORECAST- 10 NM SOUTH OF MONGLA FAIRWAY (Lat 21° 16'N, Long 089° 34'E)

DATE : 25 April to 02 May 2024

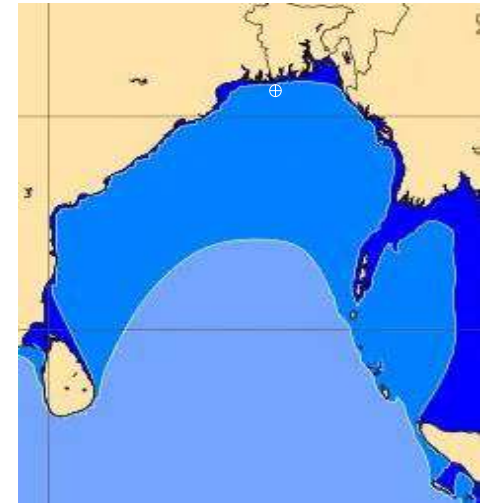
Date	Time	Max Wind Spd (kts)	Wind Direction	Wave Ht (m)	Sea State	Baro Pressure	Air Temp		Sea Surface Temp	Humidity (%)	Prob of Rain (%)	Sea State	Wave Ht (m)
							Max	Min					
25-04-24	0001	19	SSW	1.4	4	1006	36	27	29	84%	14% (0.0 mm)	0	0
	0600	20	SSW	1.4	4	1005			28	92%	12% (0.0 mm)	1	0 - 0.1
	1200	12	SW	1.3	4	1007			30	63%	13% (0.0 mm)	2	0.1 - 0.5
	1800	20	SSW	1.4	4	1003			29	85%	10% (0.0 mm)	3	0.5 - 1.25
26-04-24	0001	21	SW	1.5	4	1004	36	27	29	81%	11% (0.0 mm)	4	1.25 - 2.5
	0600	17	SW	1.6	4	1005			28	90%	12% (0.0 mm)	5	2.5 - 4.0
	1200	18	SSW	1.6	4	1006			30	62%	13% (0.0 mm)	6	4.0 - 6.0
	1800	22	S	1.9	4	1003			29	83%	12% (0.0 mm)	7	6.0 - 9.0
27-04-24	0001	27	SW	1.9	4	1004	36	27	30	82%	11% (0.0 mm)	8	9.0 - 14.0
	0600	21	SW	1.8	4	1005			29	91%	10% (0.0 mm)	9	Over 14.0
	1200	19	SSW	1.7	4	1006			30	64%	12% (0.0 mm)		
	1800	21	SSW	1.8	4	1004			30	82%	13% (0.0 mm)		
28-04-24	0001	27	SW	1.9	4	1004	36	27	30	85%	12% (0.0 mm)		
	0600	24	SSW	1.9	4	1004			29	92%	10% (0.0 mm)		
	1200	18	SW	1.9	4	1006			30	64%	11% (0.0 mm)		
	1800	20	SSW	1.9	4	1003			30	83%	13% (0.0 mm)		

25 April 24 Thu (Probability 98%)

26 April 24 Fri (Probability 95%)

27 April 24 Sat (Probability 90%)

28 April 24 Sun (Probability 80%)



Significant wave height (m)

MARINE WEATHER FORECAST- 10 NM SOUTH OF MONGLA FAIRWAY (Lat 21° 16' N, Long 089° 34' E)

DATE : 25 April to 02 May 2024

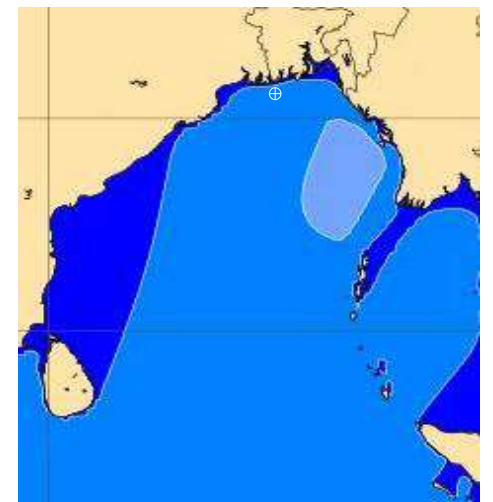
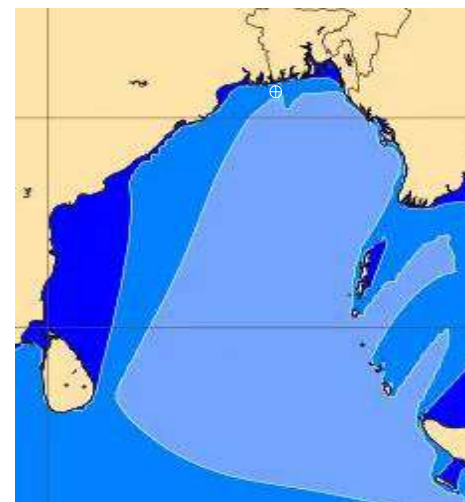
Date	Time	Max Wind Spd (kts)	W8nd Direction	Wave Ht (m)	Sea State	Baro Pressure	Air Temp		Sea Surface Temp	Humidity (%)	Prob of Rain (%)	Sea State	Wave Ht (m)
							Max	Min					
29-04-24	0001	22	SW	1.9	4	1005	36	27	29	86%	12% (0.0 mm)	0	0
	0600	17	SSW	1.8	4	1006			28	92%	10% (0.0 mm)	1	0 - 0.1
	1200	16	SSW	1.8	4	1008			30	64%	14% (0.0 mm)	2	0.1 - 0.5
	1800	26	SSW	2.0	4	1003			29	83%	11% (0.0 mm)	3	0.5 - 1.25
30-04-24	0001	28	SW	2.0	4	1003	36	27	29	82%	12% (0.0 mm)	4	1.25 - 2.5
	0600	23	SSW	2.0	4	1003			28	95%	13% (0.0 mm)	5	2.5 - 4.0
	1200	18	SSW	2.0	4	1005			30	64%	12% (0.0 mm)	6	4.0 - 6.0
	1800	25	SSW	2.1	4	1001			29	86%	14% (0.0 mm)	7	6.0 - 9.0
01-05-24	0001	30	SW	2.1	4	1001	36	27	29	82%	12% (0.0 mm)	8	9.0 - 14.0
	0600	22	SSW	2.0	4	1002			28	94%	15% (0.0 mm)	9	Over 14.0
	1200	20	SSW	2.0	4	1004			30	62%	14% (0.0 mm)		
	1800	22	SSW	2.0	4	1001			29	83%	15% (0.0 mm)		
02-05-24	0001	25	SW	2.1	4	1002	36	27	29	81%	13% (0.0 mm)		
	0600	20	SSW	2.0	4	1002			28	92%	10% (0.0 mm)		
	1200	23	SSW	2.0	4	1003			30	65%	14% (0.0 mm)		
	1800	24	SSW	2.1	4	1001			29	84%	12% (0.0 mm)		

29 April 24 Mon (Probability 70%)

30 April 24 Tue (Probability 60%)

01 May 24 Wed (Probability 50%)

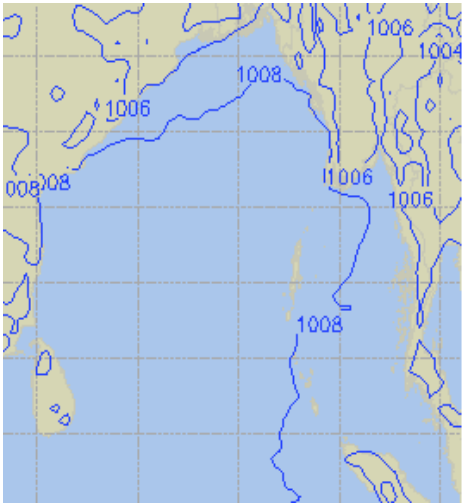
02 May 24 Thu (Probability 50%)



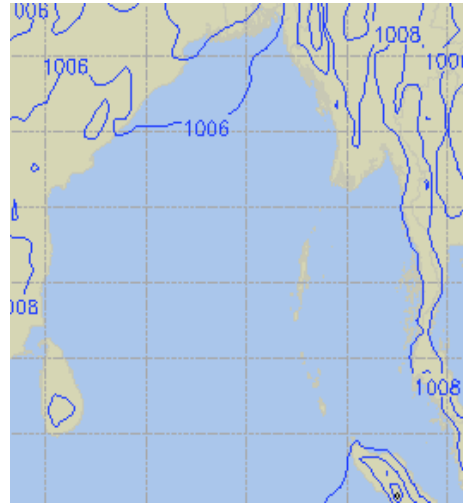
Significant wave height (m)

PREDICTED SURFACE PRESSURE FORECAST (25 April to 01 May 2024)

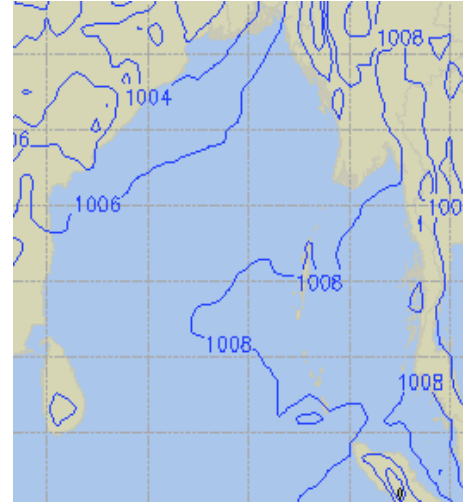
25 April 24 Thu (Probability 98%)



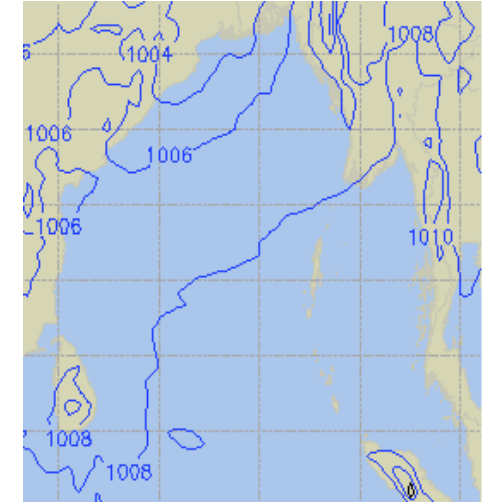
26 April 24 Fri (Probability 95%)



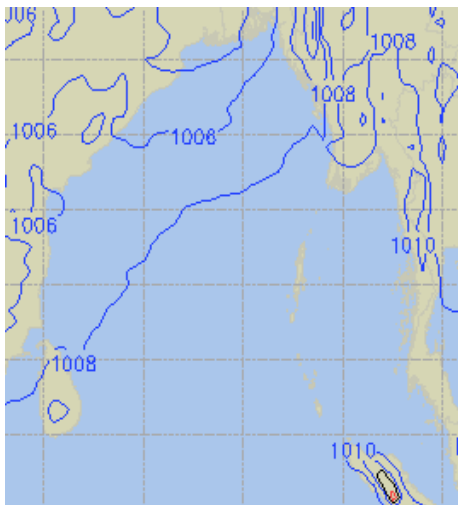
27 April 24 Sat (Probability 90%)



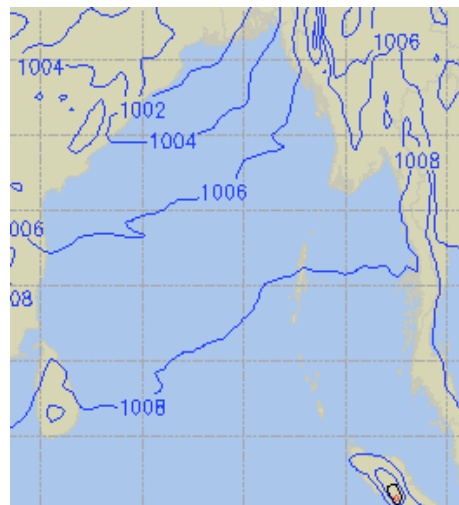
28 April 24 Sun (Probability 80%)



29 April 24 Mon (Probability 70%)



30 April 24 Tue (Probability 60%)



01 May 24 Wed (Probability 60%)

