



SUMMARY OF MARINE WEATHER FORECAST
COASTAL AREA OF BANGLADESH
DATE: 25 Dec to 01 Jan 2025



Fleet forecast	Seasonal low lies over south bay. Its associated trough extends up to North Bay.
Wind direction, speed	North/North-easterly 11 kts, (Temporary gusting up to 26 kts).
Wave height & sea state	Wave height: 0.1 to 1.4 m (Sea state:1 to 4).
Sea surface temperature	18°C - 26°C (May remain nearly unchanged).
Baro pressure	1011-1018 mb.
Rainfall	Temporary light rain/drizzle over Bay of Bengal & adjoining area.
Fog	Light to moderate fog may occur at places over the coastal area during midnight till morning.
Outlook for 25 Dec to 01 Jan 2025: Weather may remain mainly dry with temporary partly cloudy sky & Night and day temperature may fall at the end period.	



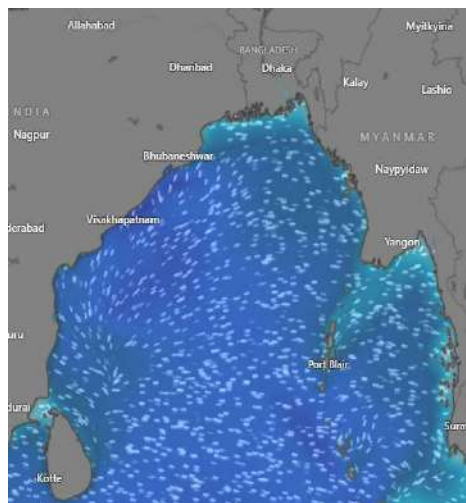
MARINE WEATHER FORECAST (25 Dec to 01 Jan 2025)

PATENGA POINT (22° 12' N, 091° 38' E)

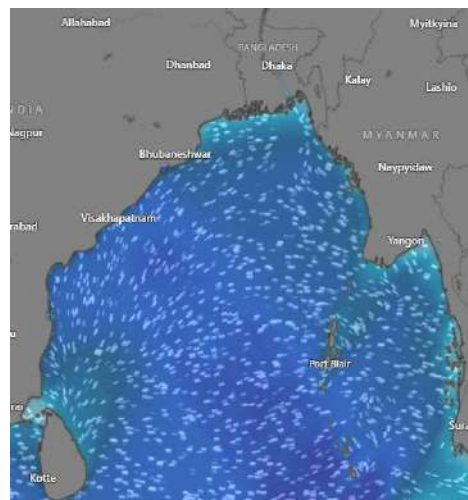


Date	Time	Air Temp (°C)		Sea Surface Temp (°C)	Baro Pressure (mbar)	Wind Direction	Wind Spd (kts)		Wave Ht (m)	Sea State	Humidity (%)	Prob of Rain (%)	Amount of Rain (mm)
		Max	Min				Gusting	Avg					
25-12-24 (Wednesday)	0001	26	18	21	1015	NNE	9	6	0.2	2	80	10	0.0
	0600			20	1017	NNE	9	3	0.2	2	81	11	0.0
	1200			23	1015	NNW	8	5	0.1	1	60	12	0.0
	1800			22	1017	NW	9	7	0.2	2	70	10	0.0
26-12-24 (Thursday)	0001	29	17	21	1016	NNE	9	6	0.2	2	79	10	0.0
	0600			20	1018	NNE	10	7	0.2	2	81	11	0.0
	1200			26	1015	NW	12	8	0.3	2	53	12	0.0
	1800			25	1017	NNW	11	8	0.2	2	61	10	0.0
27-12-24 (Friday)	0001	28	15	21	1017	NNE	13	7	0.3	2	79	10	0.0
	0600			19	1018	NNE	13	9	0.4	2	82	11	0.0
	1200			23	1015	NW	14	9	0.3	2	53	12	0.0
	1800			22	1017	NW	10	5	0.2	2	62	10	0.0
28-12-24 (Saturday)	0001	27	16	21	1016	N	9	6	0.2	2	78	10	0.0
	0600			18	1017	NNE	10	5	0.2	2	81	11	0.0
	1200			23	1014	NE	8	4	0.1	1	52	12	0.0
	1800			22	1015	NW	11	5	0.2	2	65	10	0.0

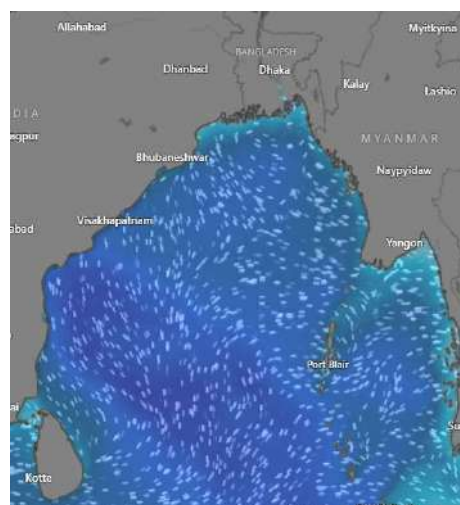
25 Dec 2024



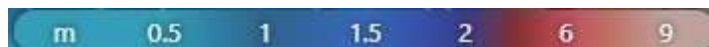
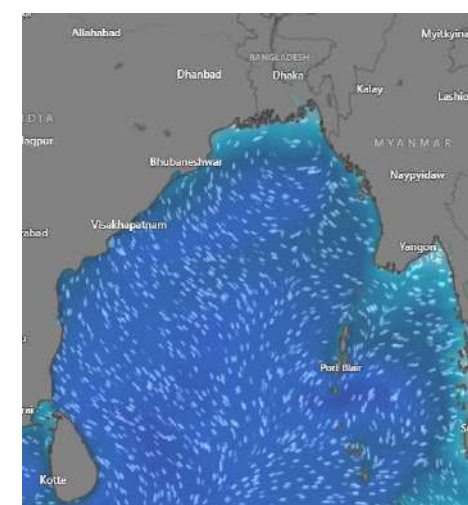
26 Dec 2024



27 Dec 2024



28 Dec 2024



Significant wave height (m)



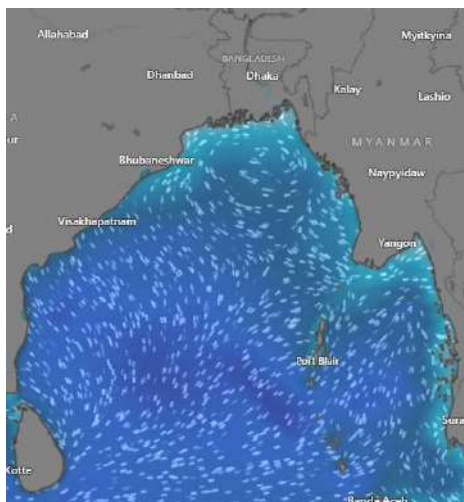
MARINE WEATHER FORECAST (25 Dec to 01 Jan 2025)

PATENGA POINT (22° 12' N, 091° 38' E)

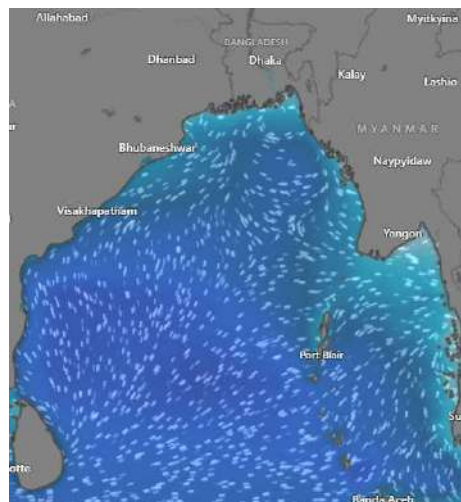


Date	Time	Air Temp (°C)		Sea Surface Temp (°C)	Baro Pressure (mbar)	Wind Direction	Wind Spd (kts)		Wave Ht (m)	Sea State	Humidity (%)	Prob of Rain (%)	Amount of Rain (mm)
		Max	Min				Gusting	Avg					
29-12-24 (Sunday)	0001	28	17	21	1015	NE	12	8	0.3	2	81	10	0.0
	0600			20	1016	NE	10	5	0.3	2	91	11	0.0
	1200			24	1013	N	9	5	0.2	2	56	10	0.0
	1800			23	1015	N	10	5	0.2	2	65	17	0.0
30-12-24 (Monday)	0001	28	16	21	1015	NNE	7	4	0.2	2	88	17	0.0
	0600			20	1017	NW	9	5	0.2	2	92	10	0.0
	1200			25	1013	NW	10	6	0.2	2	59	11	0.0
	1800			24	1015	NNW	10	7	0.3	2	65	10	0.0
31-12-24 (Tuesday)	0001	27	15	21	1015	NNE	10	7	0.3	2	81	17	0.0
	0600			20	1017	NW	14	9	0.2	2	91	10	0.0
	1200			26	1013	NW	11	8	0.3	2	56	11	0.0
	1800			25	1015	NNW	13	8	0.2	2	65	10	0.0
01-01-25 (Wednesday)	0001	26	15	21	1014	NNE	9	6	0.2	2	88	17	0.0
	0600			18	1014	NW	10	5	0.2	2	92	10	0.0
	1200			23	1012	NW	8	4	0.1	1	59	11	0.0
	1800			22	1014	NNW	11	5	0.2	2	65	10	0.0

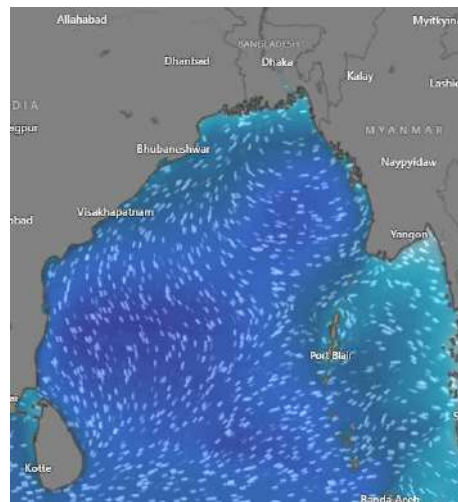
29 Dec 2024



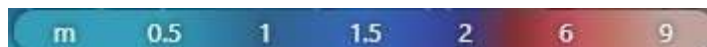
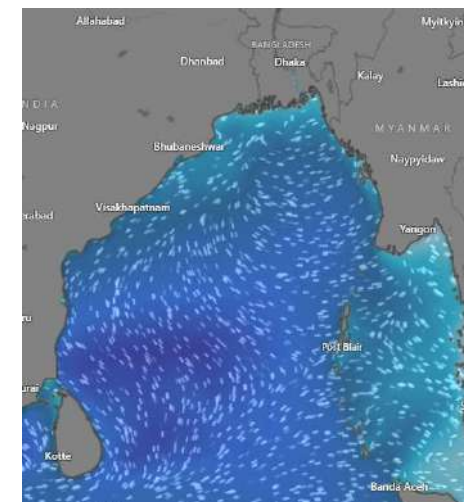
30 Dec 2024



31 Dec 2024



01 Jan 2025



Significant wave height (m)



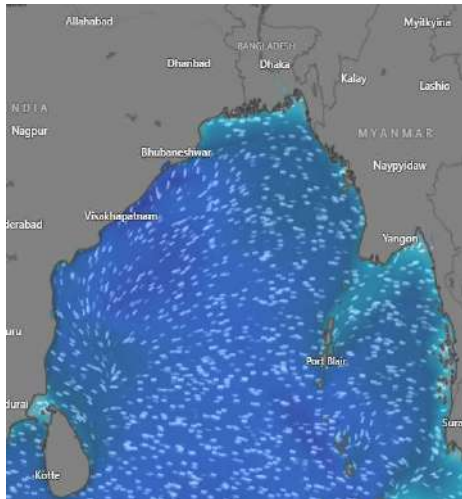
MARINE WEATHER FORECAST (25 Dec to 01 Jan 2025)

ABEAM TO KUTUBDIA (21° 51' N, 091° 40' E)

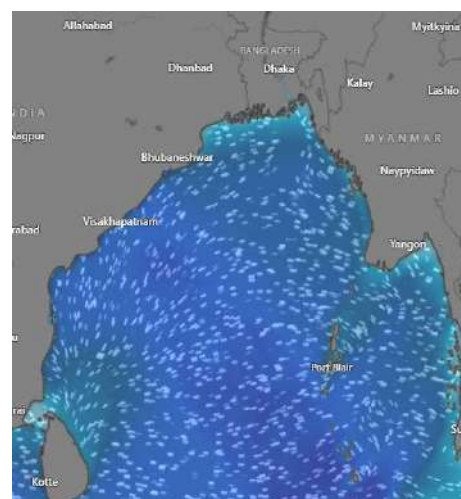


Date	Time	Air Temp (°C)		Sea Surface Temp (°C)	Baro Pressure (mbar)	Wind Direction	Wind Spd (kts)		Wave Ht (m)	Sea State	Humidity (%)	Prob of Rain (%)	Amount of Rain (mm)
		Max	Min				Gusting	Avg					
25-12-24 (Wednesday)	0001	25	19	23	1015	N	12	10	0.3	2	77	11	0.0
	0600			22	1016	N	13	7	0.4	2	76	10	0.0
	1200			23	1014	NNW	13	9	0.3	2	64	10	0.0
	1800			22	1016	NNW	13	8	0.3	2	72	14	0.0
26-12-24 (Thursday)	0001	28	19	23	1016	NNE	11	8	0.3	2	77	12	0.0
	0600			22	1018	NNE	15	11	0.4	2	79	11	0.0
	1200			25	1015	NNW	16	11	0.5	2	61	10	0.0
	1800			24	1017	NNW	15	12	0.4	2	69	10	0.0
27-12-24 (Friday)	0001	27	18	23	1016	NNE	17	11	0.5	2	76	24	0.0
	0600			22	1018	NNE	18	14	0.6	3	76	20	0.0
	1200			25	1014	NNW	17	10	0.5	2	60	16	0.0
	1800			24	1015	NNW	14	11	0.4	2	68	10	0.0
28-12-24 (Saturday)	0001	26	18	21	1015	NE	18	13	0.5	2	75	13	0.0
	0600			20	1017	NE	17	13	0.5	3	78	14	0.0
	1200			23	1013	NNE	15	9	0.4	2	59	12	0.0
	1800			22	1015	NE	16	13	0.5	2	68	10	0.0

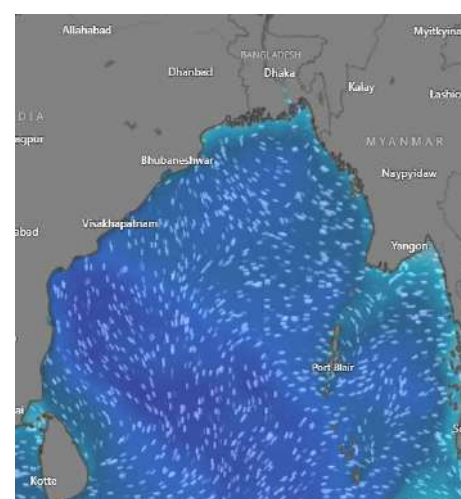
25 Dec 2024



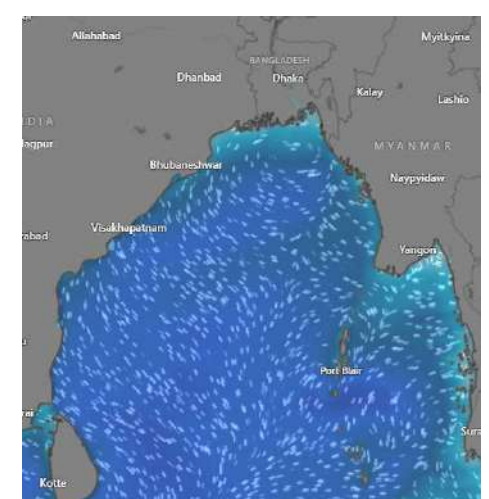
26 Dec 2024



27 Dec 2024



28 Dec 2024



Significant wave height (m)



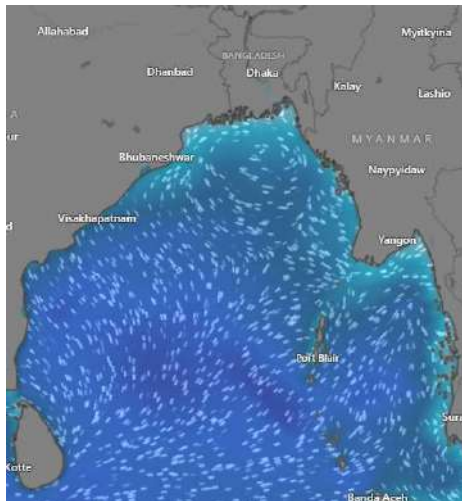
MARINE WEATHER FORECAST (25 Dec to 01 Jan 2025)

ABEAM TO KUTUBDIA (21° 51' N, 091° 40' E)

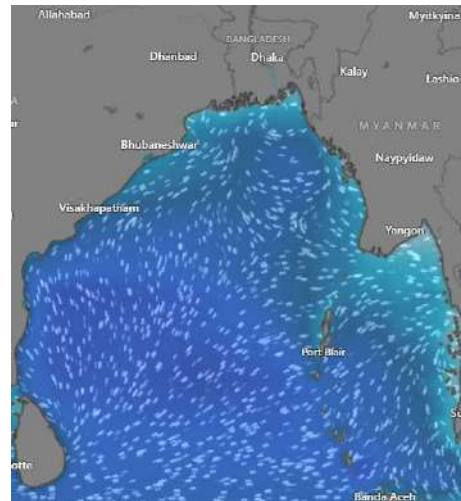


Date	Time	Air Temp (°C)		Sea Surface Temp (°C)	Baro Pressure (mbar)	Wind Direction	Wind Spd (kts)		Wave Ht (m)	Sea State	Humidity (%)	Prob of Rain (%)	Amount of Rain (mm)
		Max	Min				Gusting	Avg					
29-12-24 (Sunday)	0001	26	19	22	1015	NE	15	12	0.5	2	78	11	0.0
	0600			23	1016	NNE	14	8	0.5	2	83	10	0.0
	1200			25	1013	NW	10	7	0.4	2	59	10	0.0
	1800			24	1015	WNW	10	8	0.3	2	72	14	0.0
30-12-24 (Monday)	0001	27	18	23	1014	NE	10	8	0.3	2	77	12	0.0
	0600			22	1014	NNE	13	9	0.3	2	84	11	0.0
	1200			25	1012	NW	14	9	0.3	2	61	10	0.0
	1800			24	1015	NE	13	7	0.3	2	69	10	0.0
31-12-24 (Tuesday)	0001	25	17	23	1015	NE	14	10	0.5	2	77	12	0.0
	0600			21	1017	NNE	16	13	0.4	2	78	12	0.0
	1200			24	1013	NW	18	13	0.4	2	69	11	0.0
	1800			23	1015	NE	17	12	0.3	2	76	10	0.0
01-01-25 (Wednesday)	0001	24	17	22	1014	NNE	16	13	0.5	2	83	13	0.0
	0600			20	1016	NNW	18	12	0.3	2	81	14	0.0
	1200			24	1012	NNW	16	11	0.5	2	70	12	0.0
	1800			21	1014	NW	16	11	0.3	2	74	10	0.0

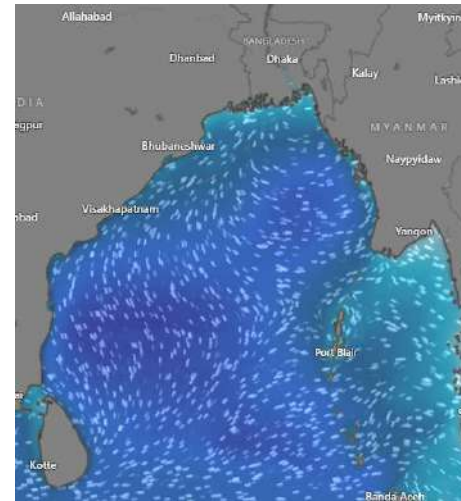
29 Dec 2024



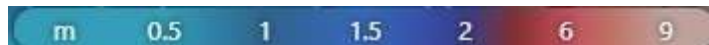
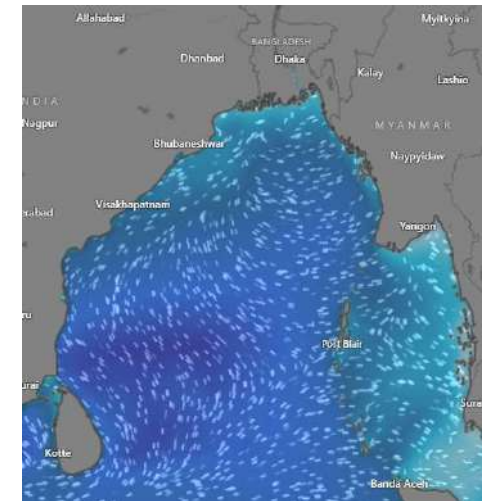
30 Dec 2024



31 Dec 2024



01 Jan 2025



Significant wave height (m)

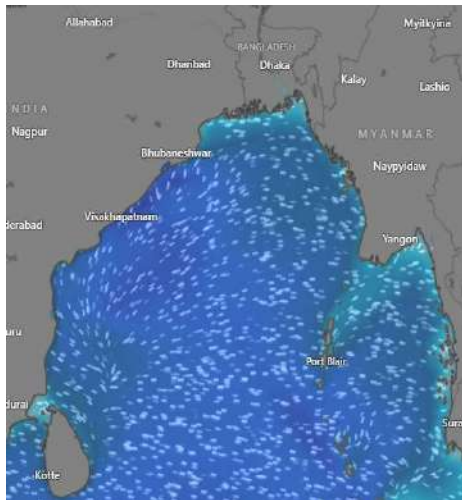


MARINE WEATHER FORECAST (25 Dec to 01 Jan 2025) ABEAM TO ELEPHANT POINT (21° 11' N, 091° 52' E)

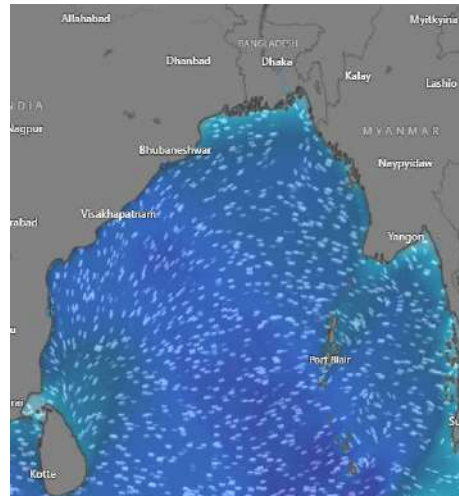


Date	Time	Air Temp (°C)		Sea Surface Temp (°C)	Baro Pressure (mbar)	Wind Direction	Wind Spd (kts)		Wave Ht (m)	Sea State	Humidity (%)	Prob of Rain (%)	Amount of Rain (mm)
		Max	Min				Gusting	Avg					
25-12-24 (Wednesday)	0001	26	19	25	1015	N	15	11	0.9	3	76	10	0.0
	0600			24	1017	N	17	12	0.9	3	74	14	0.0
	1200			24	1013	NNW	17	13	0.9	3	58	11	0.0
	1800			23	1017	NNW	18	13	0.9	3	69	12	0.0
26-12-24 (Thursday)	0001	29	19	24	1015	N	17	12	0.8	3	77	10	0.0
	0600			23	1016	N	19	13	0.8	3	80	14	0.0
	1200			25	1015	NNW	17	13	0.8	3	52	11	0.0
	1800			24	1017	NNW	17	11	0.8	3	68	10	0.0
27-12-24 (Friday)	0001	28	17	24	1016	N	17	13	0.8	3	72	10	0.0
	0600			23	1018	NNE	22	16	1.0	3	74	14	0.0
	1200			25	1014	NNW	17	13	0.9	3	48	11	0.0
	1800			24	1017	N	19	14	0.9	3	64	12	0.0
28-12-24 (Saturday)	0001	27	17	24	1015	NE	17	11	0.8	3	75	20	0.0
	0600			22	1017	NE	19	13	0.8	3	79	24	0.0
	1200			24	1013	NE	14	11	0.7	3	50	24	0.0
	1800			23	1015	N	16	11	0.7	3	67	10	0.0

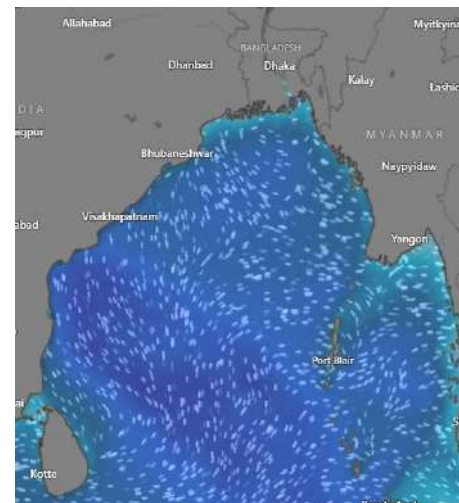
25 Dec 2024



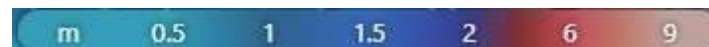
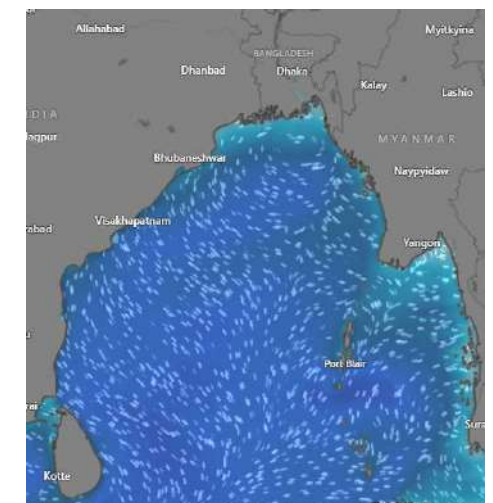
26 Dec 2024



27 Dec 2024



28 Dec 2024



Significant wave height (m)



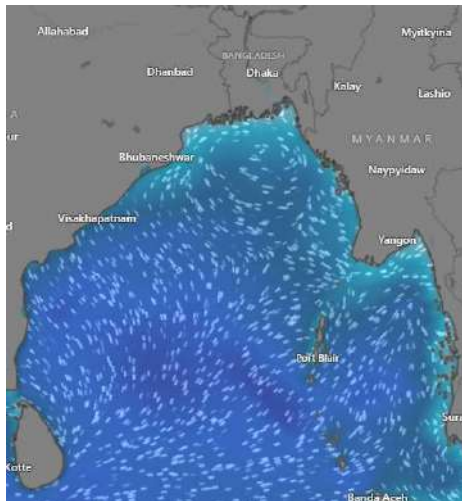
MARINE WEATHER FORECAST (25 Dec to 01 Jan 2025)

ABEAM TO ELEPHANT POINT (21° 11' N, 091° 52' E)

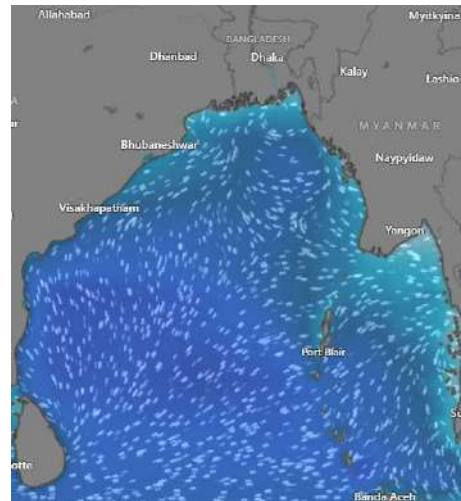


Date	Time	Air Temp (°C)		Sea Surface Temp (°C)	Baro Pressure (mbar)	Wind Direction	Wind Spd (kts)		Wave Ht (m)	Sea State	Humidity (%)	Prob of Rain (%)	Amount of Rain (mm)
		Max	Min				Gusting	Avg					
29-12-24 (Sunday)	0001	28	19	24	1015	NNE	18	14	0.9	3	76	12	0.0
	0600			23	1016	NNE	19	13	0.9	3	84	20	0.0
	1200			26	1014	NE	18	11	0.9	3	46	24	0.0
	1800			25	1015	NNE	15	10	0.7	3	68	10	0.0
30-12-24 (Monday)	0001	28	18	24	1014	NE	13	10	0.6	3	74	12	0.0
	0600			23	1016	NNE	15	11	0.6	3	84	20	0.0
	1200			26	1013	N	17	12	0.6	3	52	24	0.0
	1800			24	1015	NNE	16	11	0.7	3	70	19	0.0
31-12-24 (Tuesday)	0001	27	17	25	1015	NE	14	11	0.7	3	79	10	0.0
	0600			23	1017	NNE	19	15	0.8	3	80	12	0.0
	1200			25	1013	SSE	21	16	0.8	3	52	11	0.0
	1800			24	1015	SSE	21	13	0.7	3	67	16	0.0
01-01-25 (Wednesday)	0001	26	16	25	1014	E	18	13	0.8	3	76	12	0.0
	0600			23	1016	NNE	19	13	0.7	3	77	13	0.0
	1200			25	1012	SSE	17	14	0.7	3	64	15	0.0
	1800			24	1014	S	15	13	0.8	3	74	14	0.0

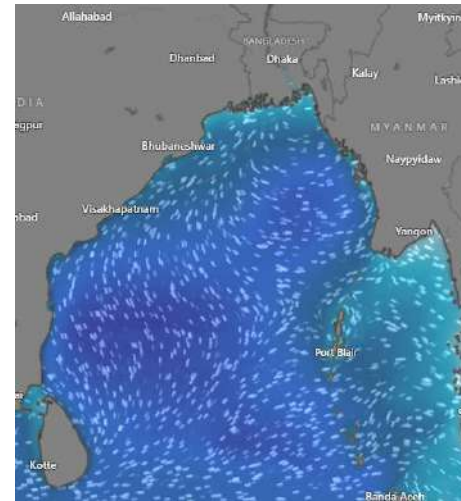
29 Dec 2024



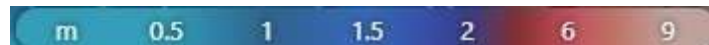
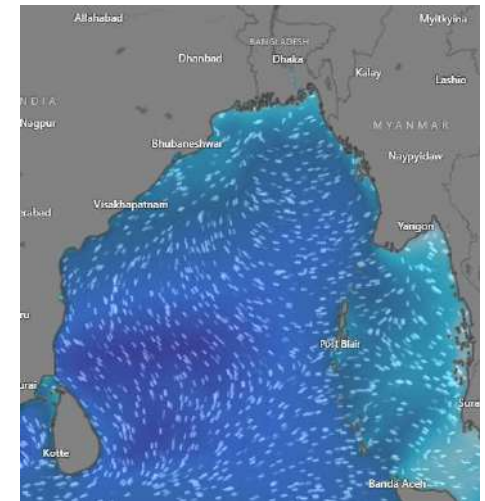
30 Dec 2024



31 Dec 2024



01 Jan 2025



Significant wave height (m)

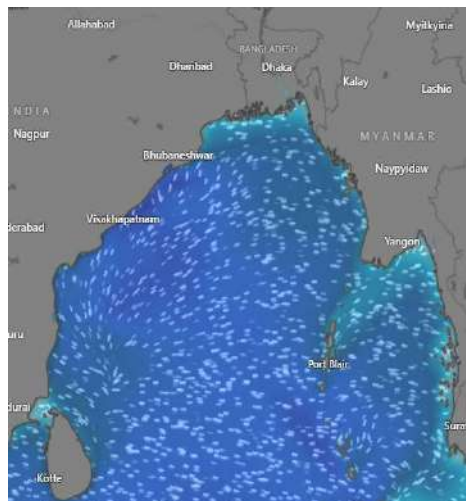


MARINE WEATHER FORECAST (25 Dec to 01 Jan 2025) ABEAM TO ST. MARTIN'S LIGHT HOUSE (20° 37' N, 092° 08' E)

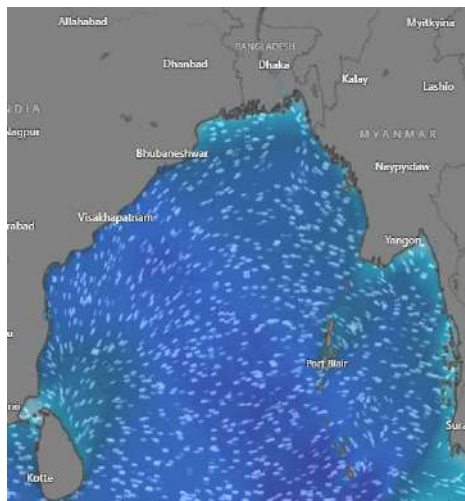


Date	Time	Air Temp (°C)		Sea Surface Temp (°C)	Baro Pressure (mbar)	Wind Direction	Wind Spd (kts)		Wave Ht (m)	Sea State	Humidity (%)	Prob of Rain (%)	Amount of Rain (mm)
		Max	Min				Gusting	Avg					
25-12-24 (Wednesday)	0001	28	20	25	1015	NNW	15	11	1.0	3	68	12	0.0
	0600			25	1016	N	18	13	1.0	3	70	10	0.0
	1200			26	1013	NNW	18	14	1.0	3	53	10	0.0
	1800			25	1015	NNW	18	12	1.0	3	65	11	0.0
26-12-24 (Thursday)	0001	30	20	25	1015	N	19	13	1.0	3	72	14	0.0
	0600			25	1017	N	21	14	1.0	3	74	12	0.0
	1200			26	1014	N	19	13	0.9	3	56	13	0.0
	1800			25	1015	NNW	17	13	0.9	3	68	15	0.0
27-12-24 (Friday)	0001	30	19	26	1016	N	19	15	0.9	3	70	12	0.0
	0600			25	1017	N	19	13	1.0	3	73	10	0.0
	1200			26	1014	N	15	8	0.9	3	52	10	0.0
	1800			25	1015	NNW	18	14	0.9	3	60	12	0.0
28-12-24 (Saturday)	0001	29	18	26	1015	E	19	15	0.9	3	70	12	0.0
	0600			24	1016	ENE	21	14	1.0	3	75	20	0.0
	1200			25	1013	E	17	11	0.8	3	48	24	0.0
	1800			24	1014	NE	17	13	0.8	3	68	10	0.0

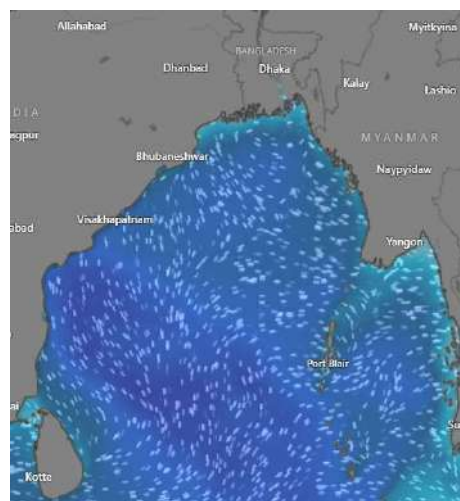
25 Dec 2024



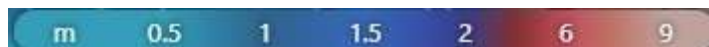
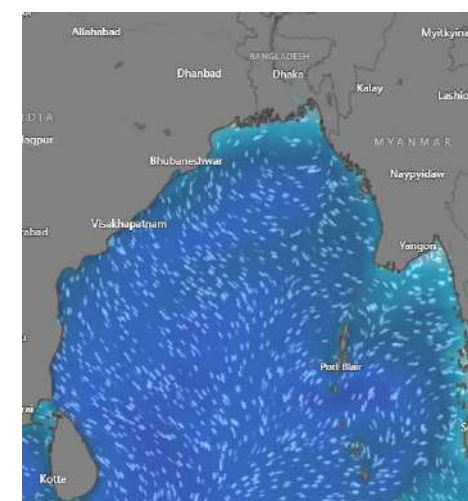
26 Dec 2024



27 Dec 2024



28 Dec 2024



Significant wave height (m)

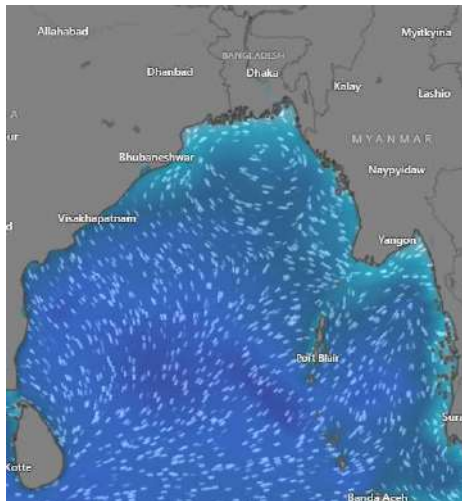


MARINE WEATHER FORECAST (25 Dec to 01 Jan 2025) ABEAM TO ST. MARTIN'S LIGHT HOUSE (20° 37'N, 092° 08' E)

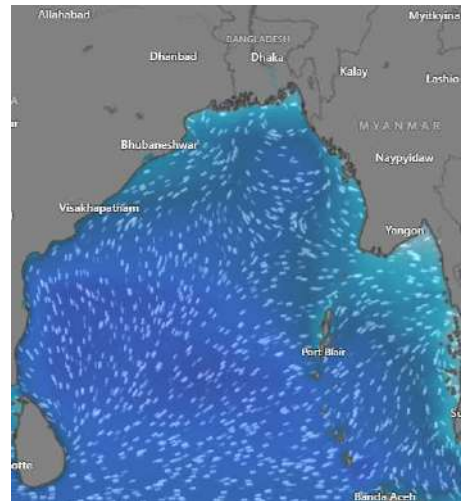


Date	Time	Air Temp (°C)		Sea Surface Temp (°C)	Baro Pressure (mbar)	Wind Direction	Wind Spd (kts)		Wave Ht (m)	Sea State	Humidity (%)	Prob of Rain (%)	Amount of Rain (mm)
		Max	Min				Gusting	Avg					
29-12-24 (Sunday)	0001	29	20	26	1014	NE	17	11	0.7	3	75	12	0.0
	0600			25	1014	NNE	16	11	0.7	3	79	14	0.0
	1200			26	1012	NW	17	12	0.7	3	55	15	0.0
	1800			25	1013	WNW	18	13	0.8	3	72	10	0.0
30-12-24 (Monday)	0001	29	19	26	1014	NE	17	13	0.7	3	73	12	0.0
	0600			25	1016	NNE	19	13	0.8	3	79	15	0.0
	1200			26	1012	NW	22	17	0.9	3	59	12	0.0
	1800			26	1014	NE	20	15	0.9	3	76	13	0.0
31-12-24 (Tuesday)	0001	27	18	26	1014	NE	22	16	1.0	3	79	12	0.0
	0600			26	1015	NNE	26	17	1.0	3	81	13	0.0
	1200			26	1011	NW	22	15	0.9	3	56	12	0.0
	1800			25	1013	NE	26	17	1.1	3	69	11	0.0
01-01-25 (Wednesday)	0001	26	18	26	1014	NE	22	16	0.9	3	70	12	0.0
	0600			24	1016	NNE	24	17	1.1	3	72	13	0.0
	1200			26	1011	NW	22	15	1.1	3	61	12	0.0
	1800			25	1012	NE	25	17	0.9	3	71	11	0.0

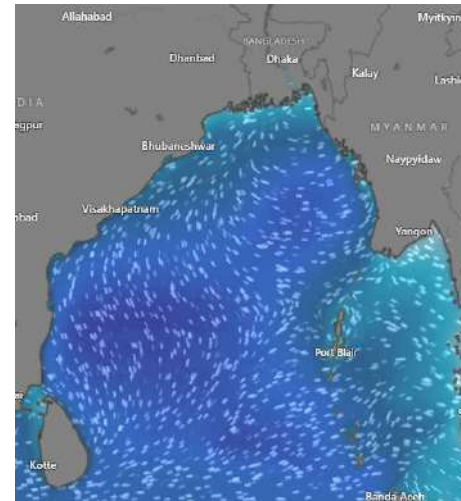
29 Dec 2024



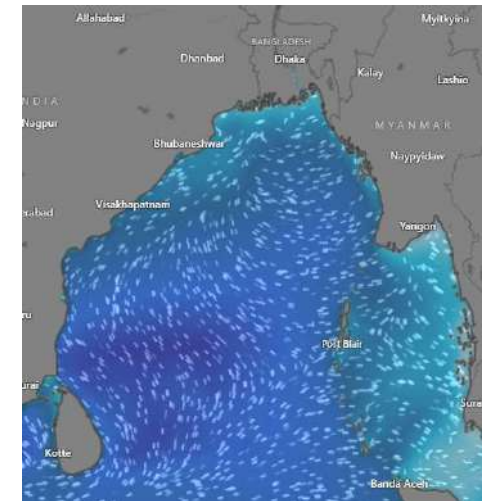
30 Dec 2024



31 Dec 2024



01 Jan 2025



Significant wave height (m)



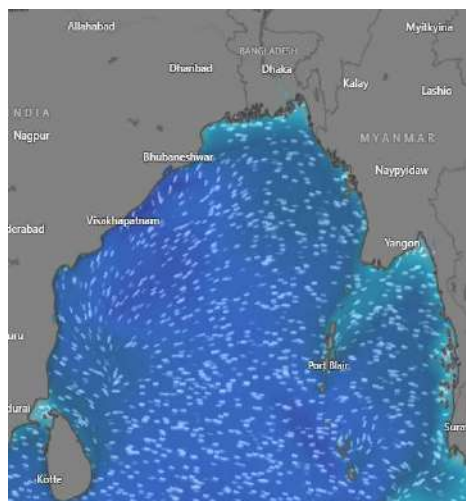
MARINE WEATHER FORECAST (25 Dec to 01 Jan 2025)

PAYRA FAIRWAY (21° 22' N, 090° 6' E)

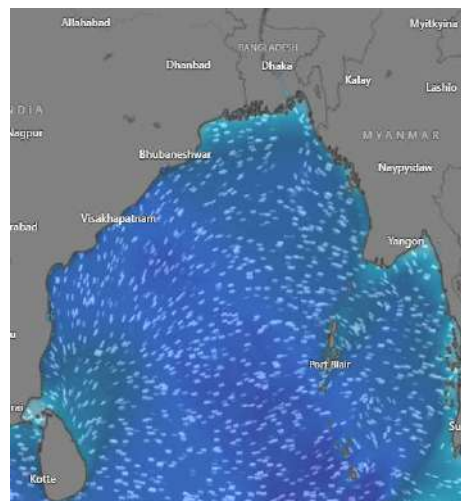


Date	Time	Air Temp (°C)		Sea Surface Temp (°C)	Baro Pressure (mbar)	Wind Direction	Wind Spd (kts)		Wave Ht (m)	Sea State	Humidity (%)	Prob of Rain (%)	Amount of Rain (mm)
		Max	Min				Gusting	Avg					
25-12-24 (Wednesday)	0001	26	18	24	1015	NNE	13	10	0.9	3	80	12	0.0
	0600			23	1018	NE	18	10	1.0	3	84	10	0.0
	1200			24	1015	NW	20	14	0.9	3	57	10	0.0
	1800			23	1017	WNW	15	9	0.8	3	67	12	0.0
26-12-24 (Thursday)	0001	28	18	24	1016	NE	13	10	0.8	3	77	10	0.0
	0600			24	1018	NNE	14	10	0.8	3	78	12	0.0
	1200			25	1015	NW	17	12	0.9	3	52	10	0.0
	1800			24	1017	NE	14	8	0.8	3	63	10	0.0
27-12-24 (Friday)	0001	28	17	25	1016	NE	16	12	0.8	3	74	12	0.0
	0600			24	1016	NNE	20	15	1.0	3	79	10	0.0
	1200			24	1014	NW	19	13	1.0	3	51	12	0.0
	1800			23	1015	NNE	15	11	0.8	3	62	10	0.0
28-12-24 (Saturday)	0001	28	17	24	1016	NE	14	11	0.7	3	74	10	0.0
	0600			23	1017	NNE	17	13	0.8	3	79	12	0.0
	1200			24	1013	NW	13	7	0.7	3	48	24	0.0
	1800			23	1015	NE	10	6	0.6	3	62	10	0.0

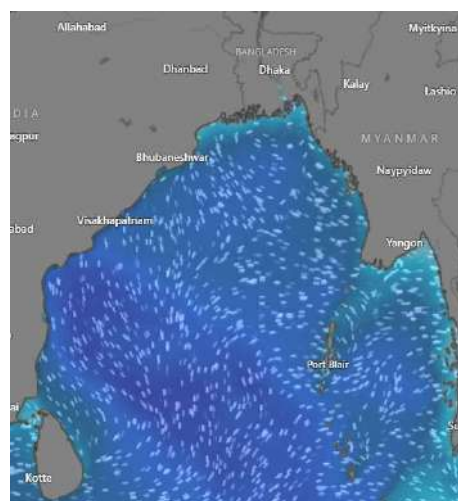
25 Dec 2024



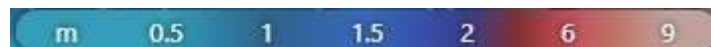
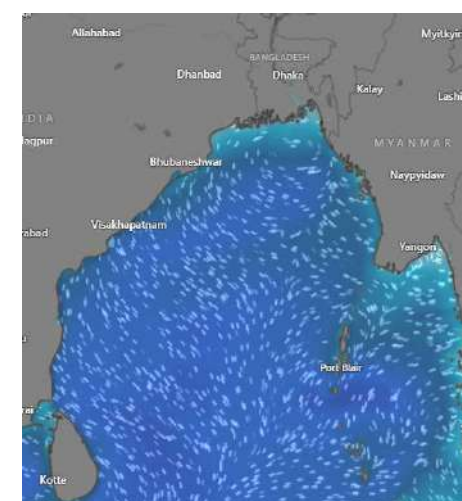
26 Dec 2024



27 Dec 2024



28 Dec 2024



Significant wave height (m)



MARINE WEATHER FORECAST (25 Dec to 01 Jan 2025)

PAYRA FAIRWAY (21° 22' N, 090° 6' E)



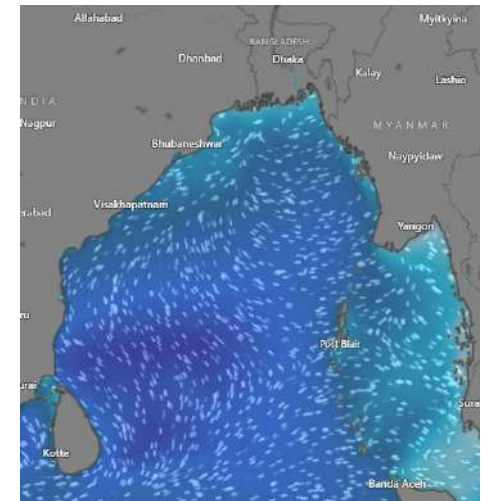
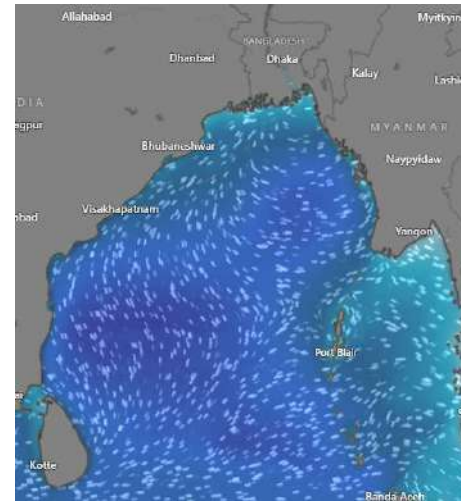
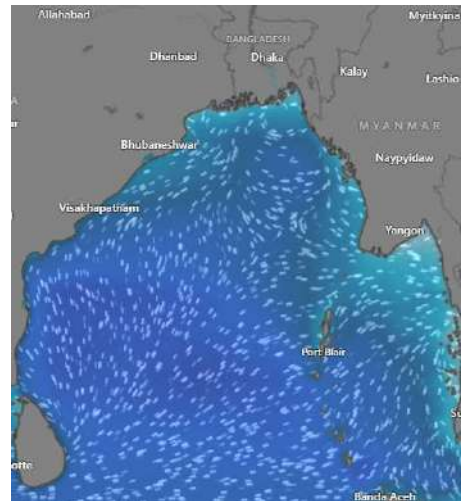
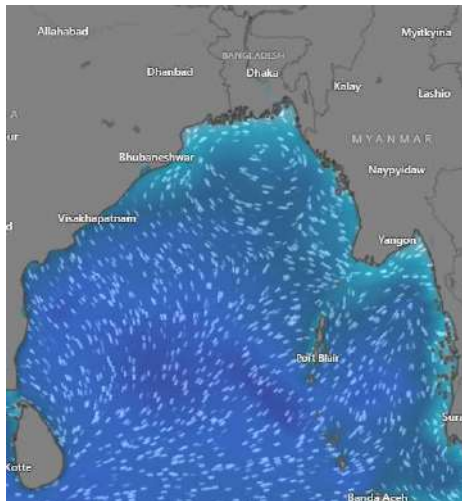
Date	Time	Air Temp (°C)		Sea Surface Temp (°C)	Baro Pressure (mbar)	Wind Direction	Wind Spd (kts)		Wave Ht (m)	Sea State	Humidity (%)	Prob of Rain (%)	Amount of Rain (mm)
		Max	Min				Gusting	Avg					
29-12-24 (Sunday)	0001	28	19	24	1015	NE	15	10	0.8	3	80	12	0.0
	0600			23	1016	NNE	16	11	0.8	3	84	20	0.0
	1200			24	1014	NW	12	9	0.7	3	61	24	0.0
	1800			24	1015	WNW	10	5	0.6	3	71	10	0.0
30-12-24 (Monday)	0001	28	18	25	1015	NE	14	11	0.6	3	79	12	0.0
	0600			24	1017	NNE	15	10	0.6	3	84	12	0.0
	1200			25	1013	NW	16	11	0.5	3	50	13	0.0
	1800			24	1015	NE	15	8	0.6	3	66	12	0.0
31-12-24 (Tuesday)	0001	26	17	25	1015	NE	15	12	0.7	3	77	12	0.0
	0600			24	1017	NNE	18	14	0.7	3	76	10	0.0
	1200			23	1012	NW	21	13	0.7	3	54	12	0.0
	1800			24	1013	NE	17	9	0.6	3	68	11	0.0
01-01-25 (Wednesday)	0001	25	16	24	1014	NE	15	12	0.9	3	77	12	0.0
	0600			23	1017	NNE	18	11	0.7	3	80	10	0.0
	1200			24	1014	NW	18	10	0.7	3	56	12	0.0
	1800			23	1015	NE	15	12	0.7	3	67	11	0.0

29 Dec 2024

30 Dec 2024

31 Dec 2024

01 Jan 2025



Significant wave height (m)



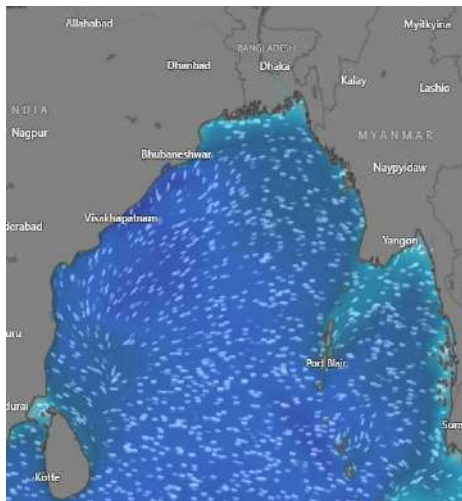
MARINE WEATHER FORECAST (25 Dec to 01 Jan 2025)

MONGLA FAIRWAY (21° 26' N, 089° 34' E)

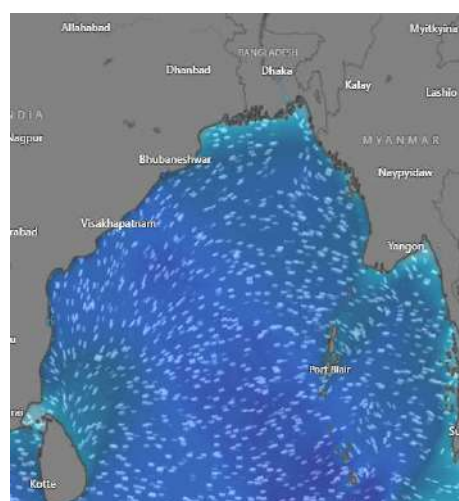


Date	Time	Air Temp (°C)		Sea Surface Temp (°C)	Baro Pressure (mbar)	Wind Direction	Wind Spd (kts)		Wave Ht (m)	Sea State	Humidity (%)	Prob of Rain (%)	Amount of Rain (mm)
		Max	Min				Gusting	Avg					
25-12-24 (Wednesday)	0001	27	17	24	1016	NW	14	10	1.0	3	80	10	0.0
	0600			23	1017	N	12	8	0.9	3	84	14	0.0
	1200			23	1015	NNE	19	9	0.9	3	50	11	0.0
	1800			22	1017	SW	14	7	0.8	3	61	12	0.0
26-12-24 (Thursday)	0001	29	17	24	1016	N	6	4	0.7	3	77	10	0.0
	0600			23	1017	NNE	13	10	0.8	3	80	14	0.0
	1200			24	1016	NNE	17	10	0.8	3	46	11	0.0
	1800			23	1018	NE	8	4	0.7	3	59	12	0.0
27-12-24 (Friday)	0001	29	16	24	1017	NNE	14	11	0.8	3	77	10	0.0
	0600			22	1017	NNE	20	15	1.0	3	84	14	0.0
	1200			24	1015	N	18	10	0.9	3	45	11	0.0
	1800			23	1016	W	9	7	0.7	3	57	12	0.0
28-12-24 (Saturday)	0001	28	17	24	1016	NE	11	9	0.7	3	79	24	0.0
	0600			23	1018	NNE	17	11	0.8	3	88	24	0.0
	1200			24	1014	NW	13	7	0.7	3	46	15	0.0
	1800			23	1016	NE	7	4	0.6	3	59	10	0.0

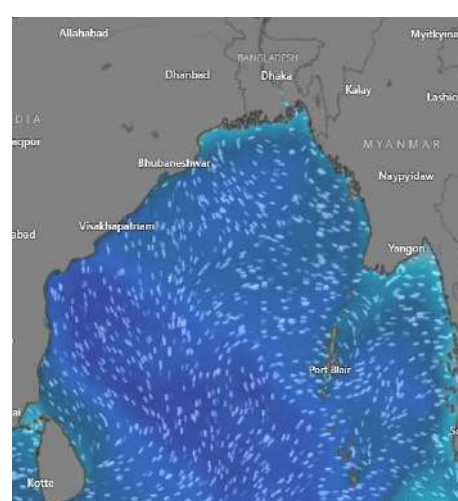
25 Dec 2024



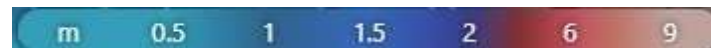
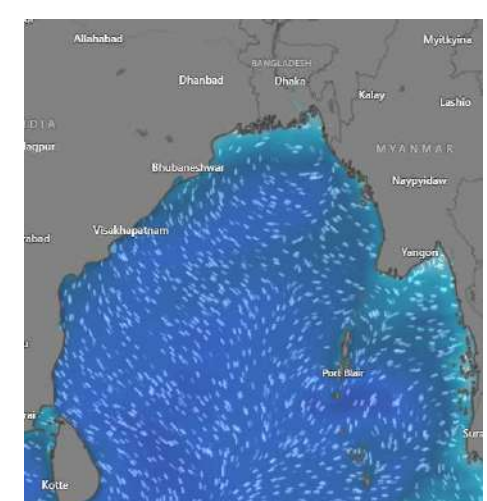
26 Dec 2024



27 Dec 2024



28 Dec 2024



Significant wave height (m)



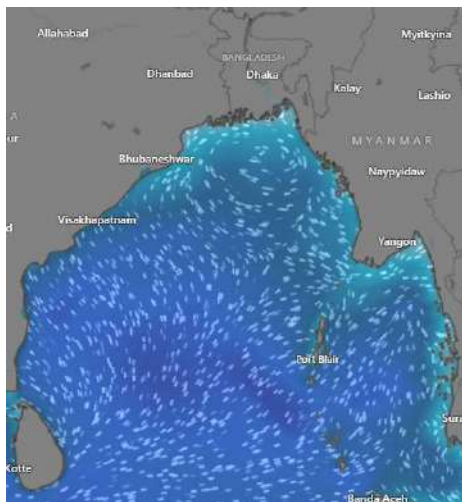
MARINE WEATHER FORECAST (25 Dec to 01 Jan 2025)

MONGLA FAIRWAY (21° 26' N, 089° 34' E)

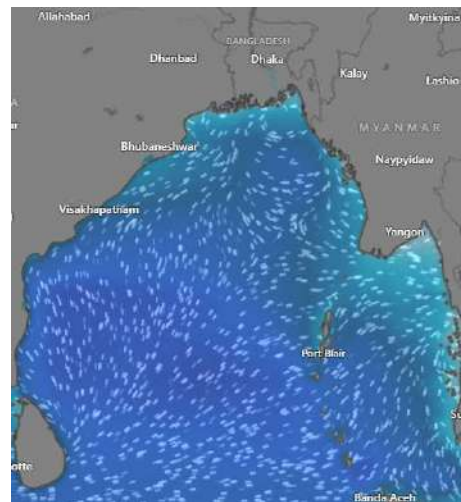


Date	Time	Air Temp (°C)		Sea Surface Temp (°C)	Baro Pressure (mbar)	Wind Direction	Wind Spd (kts)		Wave Ht (m)	Sea State	Humidity (%)	Prob of Rain (%)	Amount of Rain (mm)
		Max	Min				Gusting	Avg					
29-12-24 (Sunday)	0001	28	18	25	1015	NE	13	9	0.7	3	83	13	0.0
	0600			24	1017	NNE	13	10	0.8	3	89	14	0.0
	1200			25	1014	NW	14	8	0.7	3	57	24	0.0
	1800			24	1016	WNW	7	5	0.6	3	66	24	0.0
30-12-24 (Monday)	0001	28	16	24	1015	NE	12	9	0.5	3	83	24	0.0
	0600			23	1016	NNE	12	9	0.5	3	88	24	0.0
	1200			25	1014	NW	16	9	0.5	3	46	10	0.0
	1800			24	1015	NE	13	5	0.5	3	60	9	0.0
31-12-24 (Tuesday)	0001	26	15	25	1016	NE	14	10	0.7	3	82	12	0.0
	0600			24	1018	NNE	18	14	0.7	3	87	10	0.0
	1200			25	1013	NW	20	11	0.7	3	55	12	0.0
	1800			24	1015	NE	15	4	0.9	3	66	11	0.0
01-01-25 (Wednesday)	0001	25	14	24	1015	NE	17	12	0.9	3	81	12	0.0
	0600			23	1017	NNE	18	9	0.6	3	87	10	0.0
	1200			25	1013	NW	16	8	0.8	3	55	12	0.0
	1800			24	1015	NE	13	9	0.7	3	62	11	0.0

29 Dec 2024



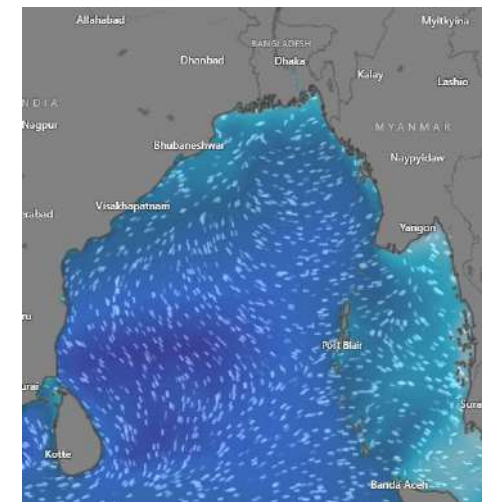
30 Dec 2024



31 Dec 2024



01 Jan 2025



Significant wave height (m)



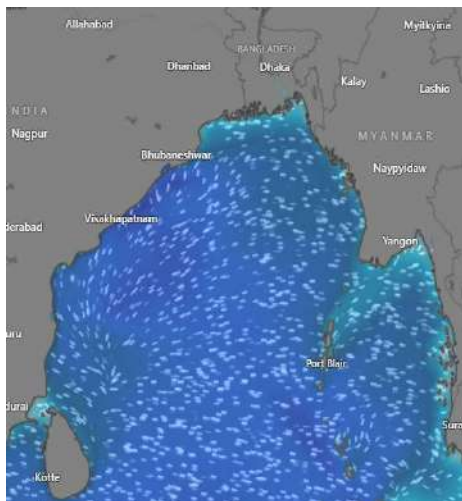
MARINE WEATHER FORECAST (25 Dec to 01 Jan 2025)

OUTER EEZ (18° 48' N, 090° 30' E)

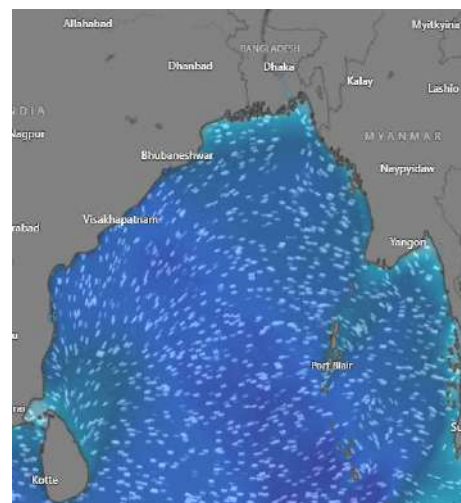


Date	Time	Air Temp (°C)		Sea Surface Temp (°C)	Baro Pressure (mbar)	Wind Direction	Wind Spd (kts)		Wave Ht (m)	Sea State	Humidity (%)	Prob of Rain (%)	Amount of Rain (mm)
		Max	Min				Gusting	Avg					
25-12-24 (Wednesday)	0001	28	20	26	1015	NNE	13	7	1.2	3	68	12	0.0
	0600			25	1016	N	15	11	1.2	3	70	10	0.0
	1200			26	1014	NNE	19	14	1.3	4	53	10	0.0
	1800			26	1016	N	18	12	1.3	4	64	11	0.0
26-12-24 (Thursday)	0001	30	20	26	1016	N	15	10	1.2	3	70	14	0.0
	0600			26	1017	NNE	17	13	1.2	3	69	12	0.0
	1200			26	1013	NNE	16	11	1.1	3	50	13	0.0
	1800			26	1013	NNE	16	12	1.2	3	63	15	0.0
27-12-24 (Friday)	0001	30	19	26	1015	NNE	19	14	1.2	3	70	12	0.0
	0600			26	1017	NNE	20	14	1.3	4	72	10	0.0
	1200			26	1015	NNE	18	13	1.3	4	48	10	0.0
	1800			25	1016	NNE	18	13	1.3	4	64	12	0.0
28-12-24 (Saturday)	0001	29	18	25	1014	NE	17	13	1.2	3	70	12	0.0
	0600			26	1017	NNE	18	13	1.2	3	75	20	0.0
	1200			25	1014	NW	18	13	1.2	3	48	24	0.0
	1800			26	1015	NE	15	10	1.1	3	68	10	0.0

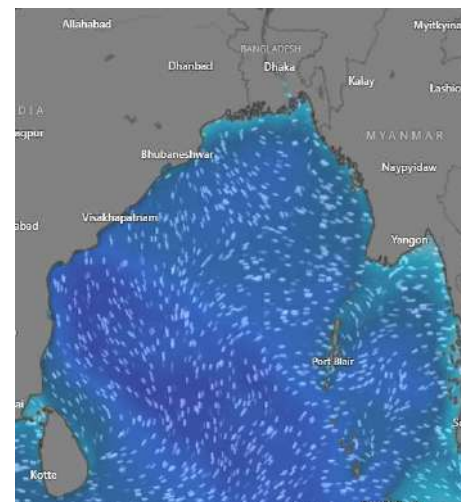
25 Dec 2024



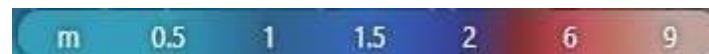
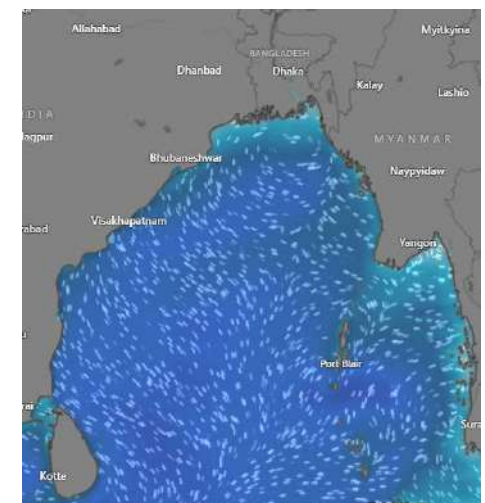
26 Dec 2024



27 Dec 2024



28 Dec 2024



Significant wave height (m)



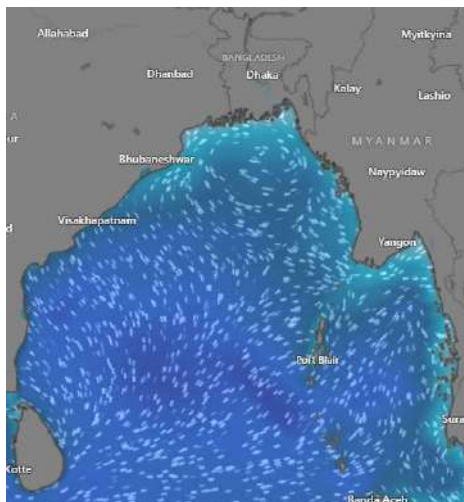
MARINE WEATHER FORECAST (25 Dec to 01 Jan 2025)

OUTER EEZ (18° 48' N, 090° 30' E)

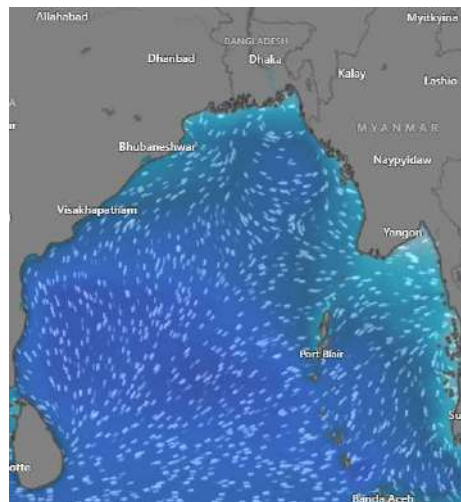


Date	Time	Air Temp (°C)		Sea Surface Temp (°C)	Baro Pressure (mbar)	Wind Direction	Wind Spd (kts)		Wave Ht (m)	Sea State	Humidity (%)	Prob of Rain (%)	Amount of Rain (mm)
		Max	Min				Gusting	Avg					
29-12-24 (Sunday)	0001	29	20	26	1015	NE	13	9	0.9	3	89	12	0.0
	0600			25	1015	NNE	16	12	0.9	3	91	20	0.0
	1200			26	1013	NW	16	10	0.8	3	82	24	0.0
	1800			26	1014	WNW	15	11	0.8	3	83	10	0.0
30-12-24 (Monday)	0001	29	19	26	1015	NE	13	10	0.8	3	92	24	0.0
	0600			26	1016	NNE	17	13	0.9	3	93	10	0.0
	1200			26	1013	NW	18	13	1.0	3	66	9	0.0
	1800			26	1014	NE	19	14	1.2	3	77	9	0.0
31-12-24 (Tuesday)	0001	27	18	26	1015	NE	18	11	1.1	3	84	12	0.0
	0600			25	1016	NNE	23	17	1.3	4	88	10	0.0
	1200			27	1013	NW	23	12	1.4	4	61	12	0.0
	1800			26	1014	NE	23	14	1.4	4	65	11	0.0
01-01-25 (Wednesday)	0001	26	18	26	1015	NE	19	15	1.3	4	87	12	0.0
	0600			25	1015	NNE	26	14	1.4	4	89	10	0.0
	1200			26	1013	NW	18	14	1.2	3	55	12	0.0
	1800			26	1014	NE	19	14	1.1	3	64	11	0.0

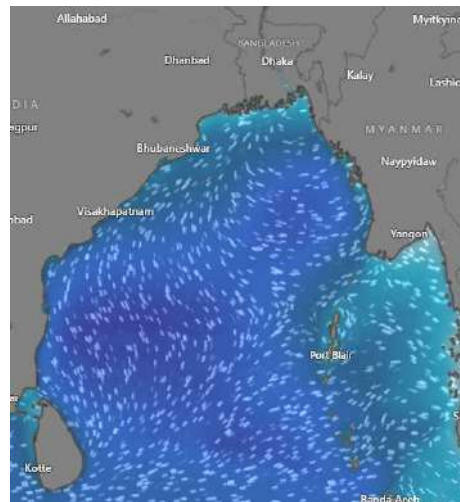
29 Dec 2024



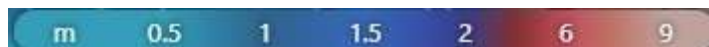
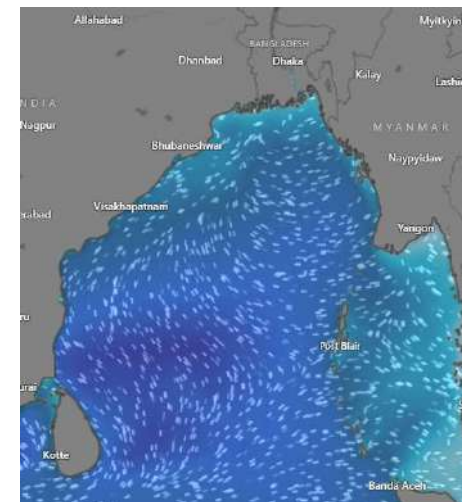
30 Dec 2024



31 Dec 2024



01 Jan 2025



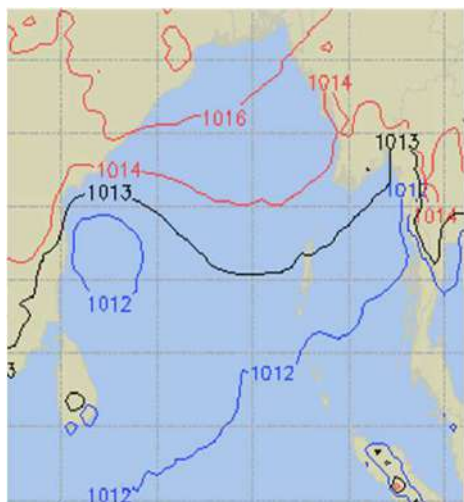
Significant wave height (m)



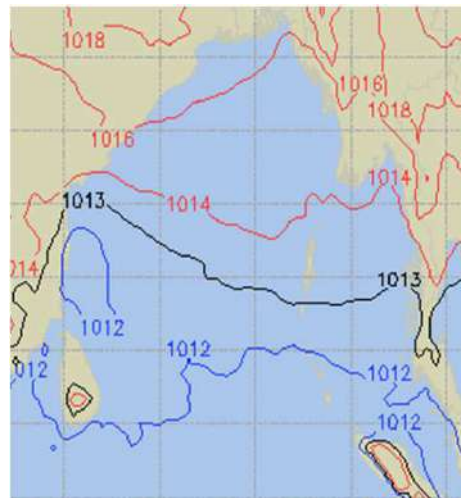
PREDICTED SURFACE PRESSURE FORECAST (25 to 31 Dec 2024)



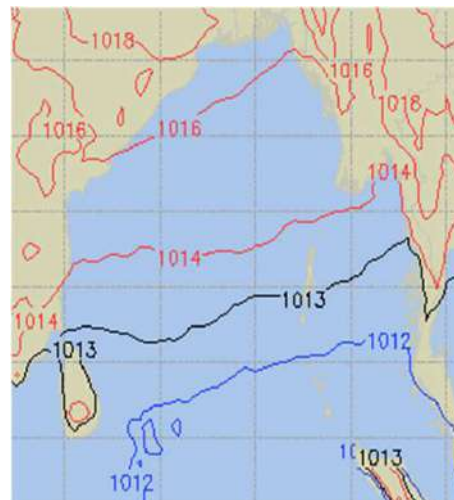
25 Dec 2024



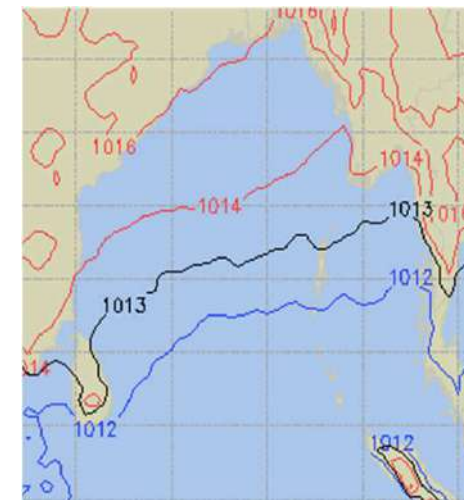
26 Dec 2024



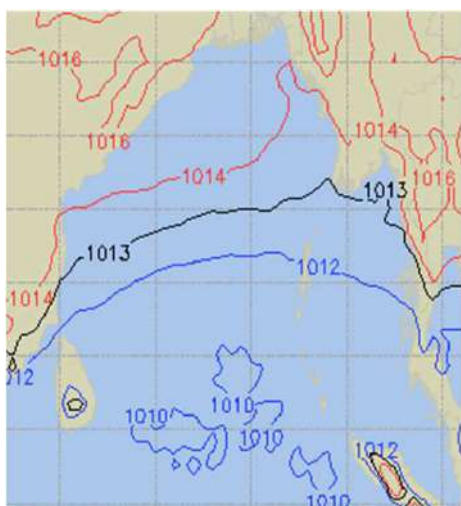
27 Dec 2024



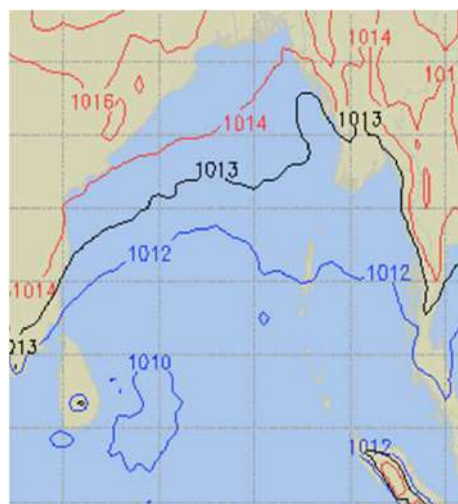
28 Dec 2024



29 Dec 2024



30 Dec 2024



31 Dec 2024

