



**SUMMARY OF MARINE WEATHER FORECAST**  
**COASTAL AREA OF BANGLADESH**  
**DATE: 24 to 31 Dec 2024**



Fleet forecast	Seasonal low lies over south Bay, its associated trough extends up to North Bay.
Wind direction, speed	North/North-easterly 10 kts, (Temporary gusting up to 26 kts).
Wave height & sea state	Wave height: 0.1 to 1.4 m (Sea state:1 to 4).
Sea surface temperature	19°C - 26°C (May remain nearly unchanged).
Baro pressure	1012-1017 mb.
Rainfall	Temporary partly cloudy sky over Bay of Bengal & adjoining area.
Fog	Light to moderate fog may occur at places over the coastal area during midnight till morning.

**Outlook for 24 to 31 Dec 2024:** Weather may remain mainly dry with temporary partly cloudy sky & Night temperature may fall.



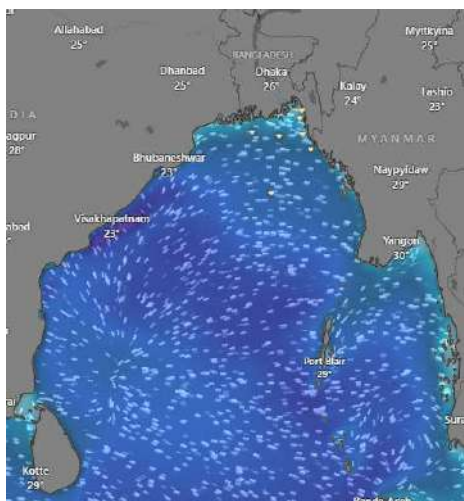
# MARINE WEATHER FORECAST (24 to 31 Dec 2024)

## PATENGA POINT (22° 12' N, 091° 38' E)

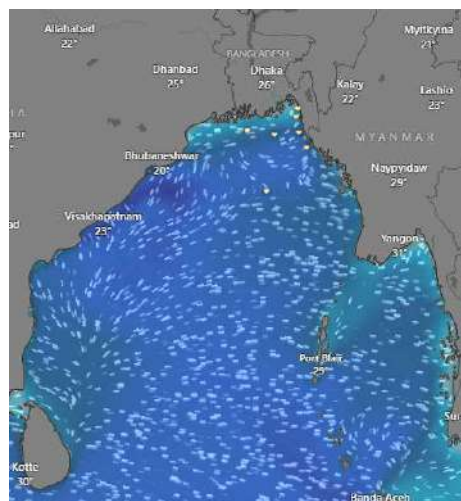


Date	Time	Air Temp (°C)		Sea Surface Temp (°C)	Baro Pressure (mbar)	Wind Direction	Wind Spd (kts)		Wave Ht (m)	Sea State	Humidity (%)	Prob of Rain (%)	Amount of Rain (mm)
		Max	Min				Gusting	Avg					
24-12-24 (Tuesday)	0001	27	17	19	1014	NNE	9	6	0.2	2	80	10	0.0
	0600			19	1016	NNE	10	5	0.2	2	81	11	0.0
	1200			23	1012	WNW	10	6	0.2	2	51	12	0.0
	1800			22	1013	NW	9	4	0.1	1	63	10	0.0
25-12-24 (Wednesday)	0001	26	17	20	1015	NNE	8	5	0.2	2	80	10	0.0
	0600			19	1017	NNE	10	6	0.2	2	80	11	0.0
	1200			23	1014	NW	9	4	0.2	2	59	12	0.0
	1800			22	1017	NW	6	3	0.1	2	68	10	0.0
26-12-24 (Thursday)	0001	29	17	20	1016	NNE	6	6	0.2	2	79	10	0.0
	0600			19	1017	NNE	7	7	0.2	2	82	11	0.0
	1200			24	1014	NW	6	6	0.2	2	53	12	0.0
	1800			23	1017	NNW	8	8	0.2	2	62	10	0.0
27-12-24 (Friday)	0001	28	15	20	1015	N	12	9	0.3	2	78	10	0.0
	0600			20	1016	NNE	13	8	0.3	2	81	11	0.0
	1200			24	1014	NE	12	8	0.3	2	52	12	0.0
	1800			23	1017	NW	13	9	0.2	2	65	10	0.0

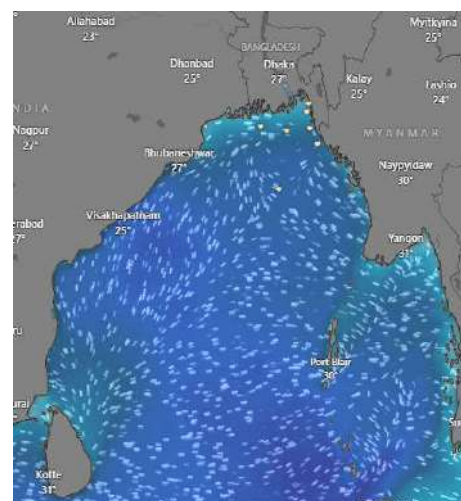
**24 Dec 2024**



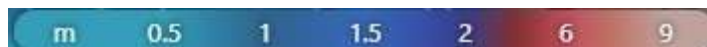
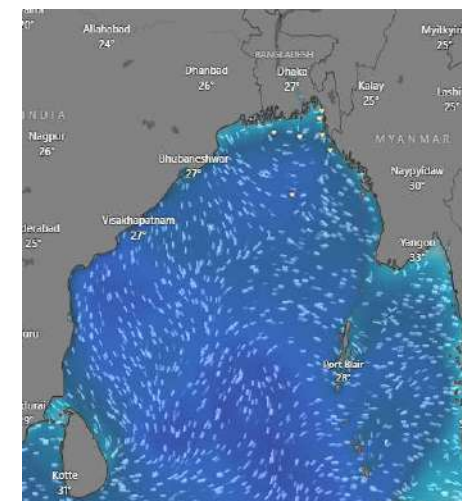
**25 Dec 2024**



**26 Dec 2024**



**27 Dec 2024**



Significant wave height (m)



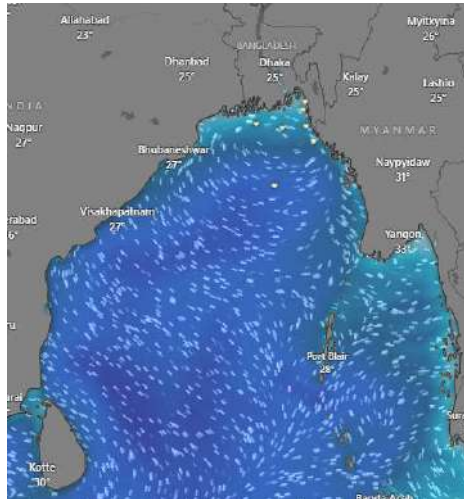
# MARINE WEATHER FORECAST (24 to 31 Dec 2024)

## PATENGA POINT (22° 12' N, 091° 38' E)

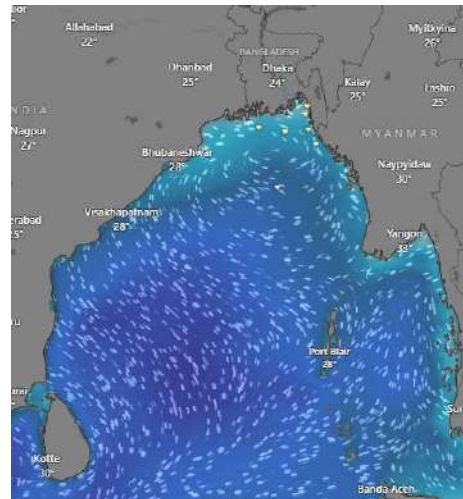


Date	Time	Air Temp (°C)		Sea Surface Temp (°C)	Baro Pressure (mbar)	Wind Direction	Wind Spd (kts)		Wave Ht (m)	Sea State	Humidity (%)	Prob of Rain (%)	Amount of Rain (mm)
		Max	Min				Gusting	Avg					
28-12-24 (Saturday)	0001	27	16	21	1017	NE	12	8	0.3	2	81	10	0.0
	0600			19	1016	NE	10	5	0.3	2	91	11	0.0
	1200			24	1015	N	9	5	0.2	2	56	10	0.0
	1800			23	1017	N	10	5	0.2	2	65	17	0.0
29-12-24 (Sunday)	0001	28	17	21	1015	NNE	7	4	0.2	2	88	17	0.0
	0600			19	1017	NW	9	5	0.2	2	92	10	0.0
	1200			25	1012	NW	10	6	0.2	2	59	11	0.0
	1800			24	1013	NNW	10	7	0.3	2	65	10	0.0
30-12-24 (Monday)	0001	28	16	21	1015	NNE	10	7	0.3	2	81	17	0.0
	0600			19	1016	NW	14	9	0.2	2	91	10	0.0
	1200			23	1012	NW	11	8	0.3	2	56	11	0.0
	1800			22	1014	NNW	13	8	0.2	2	65	10	0.0
31-12-24 (Tuesday)	0001	26	16	20	1014	NNE	11	8	0.3	2	88	17	0.0
	0600			18	1016	NW	13	8	0.2	2	92	10	0.0
	1200			23	1012	NW	9	6	0.3	2	59	11	0.0
	1800			21	1014	NNW	12	7	0.2	2	65	10	0.0

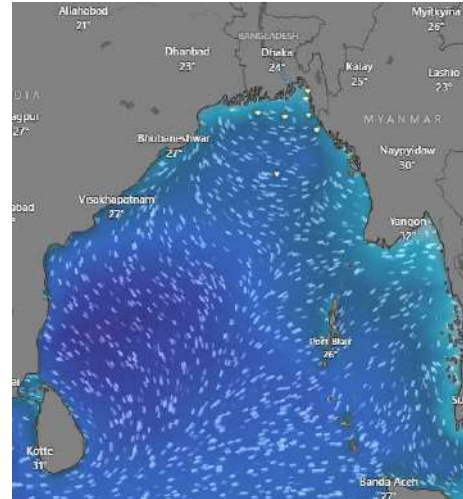
**28 Dec 2024**



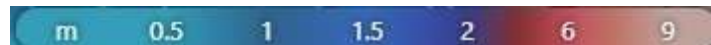
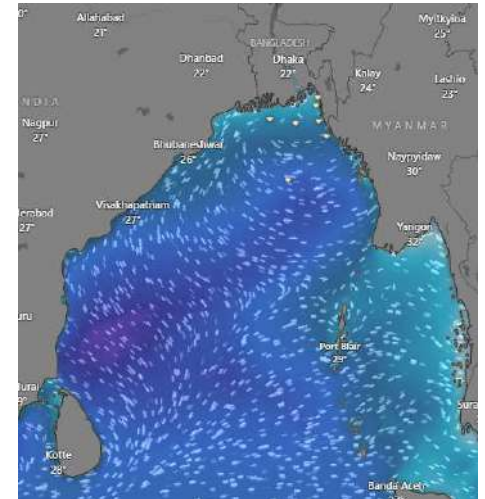
**29 Dec 2024**



**30 Dec 2024**



**31 Dec 2024**



Significant wave height (m)





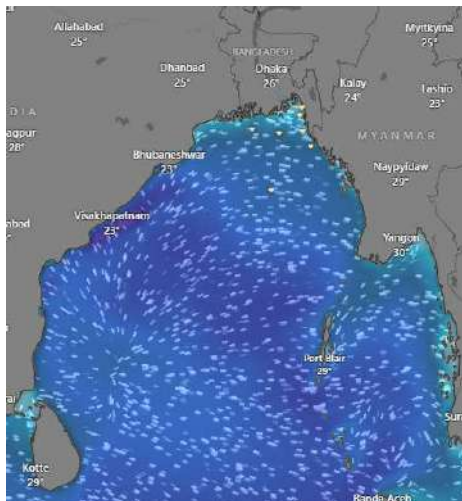
# MARINE WEATHER FORECAST (24 to 31 Dec 2024)

## ABEAM TO KUTUBDIA (21° 51' N, 091° 40' E)

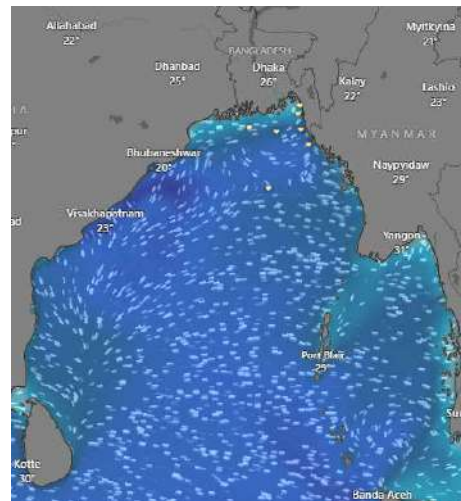


Date	Time	Air Temp (°C)		Sea Surface Temp (°C)	Baro Pressure (mbar)	Wind Direction	Wind Spd (kts)		Wave Ht (m)	Sea State	Humidity (%)	Prob of Rain (%)	Amount of Rain (mm)
		Max	Min				Gusting	Avg					
24-12-24 (Tuesday)	0001	26	19	22	1014	NNE	11	8	0.3	2	77	11	0.0
	0600			20	1016	NNE	13	8	0.4	2	76	10	0.0
	1200			24	1013	NNW	11	8	0.3	2	58	10	0.0
	1800			23	1015	NW	10	7	0.3	2	67	14	0.0
25-12-24 (Wednesday)	0001	25	19	23	1016	NNE	11	8	0.3	2	77	12	0.0
	0600			22	1017	NNE	14	10	0.4	2	74	11	0.0
	1200			24	1014	N	14	9	0.4	2	61	10	0.0
	1800			23	1017	NW	12	5	0.3	2	69	10	0.0
26-12-24 (Thursday)	0001	28	19	22	1016	NNE	16	15	0.4	2	76	24	0.0
	0600			21	1017	NNE	15	15	0.4	2	76	20	0.0
	1200			24	1015	NNW	12	12	0.4	2	60	16	0.0
	1800			23	1017	NNW	14	12	0.4	2	68	10	0.0
27-12-24 (Friday)	0001	27	17	22	1014	NE	18	13	0.5	2	75	13	0.0
	0600			21	1017	NE	17	13	0.5	3	78	14	0.0
	1200			23	1015	NNE	15	9	0.4	2	59	12	0.0
	1800			22	1016	NE	16	13	0.5	2	68	10	0.0

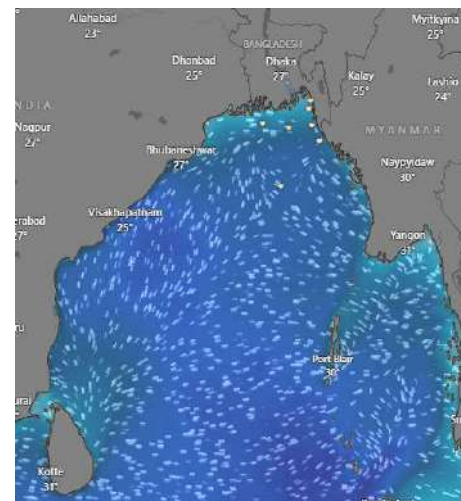
**24 Dec 2024**



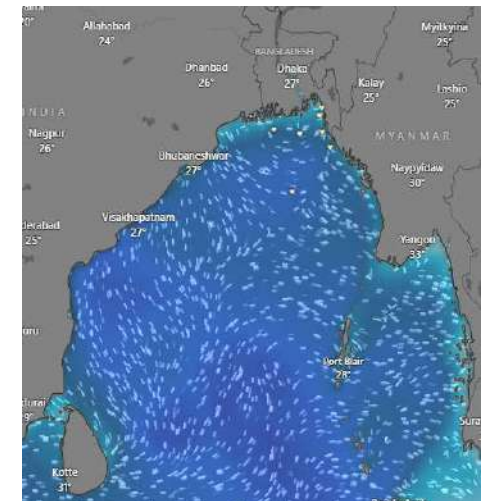
**25 Dec 2024**



**26 Dec 2024**



**27 Dec 2024**



Significant wave height (m)

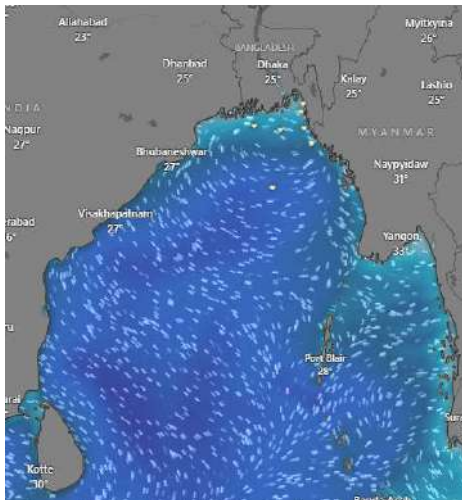


# MARINE WEATHER FORECAST (24 to 31 Dec 2024) ABEAM TO KUTUBDIA (21° 51' N, 091° 40' E)

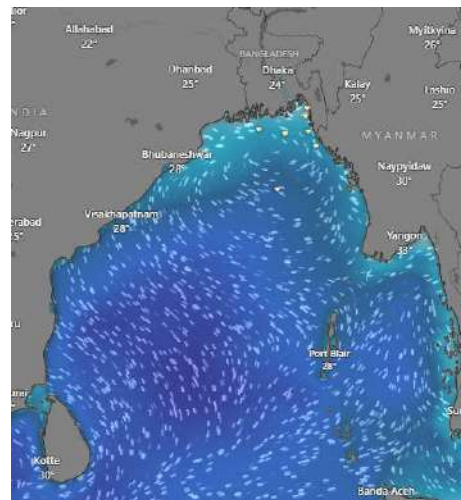


Date	Time	Air Temp (°C)		Sea Surface Temp (°C)	Baro Pressure (mbar)	Wind Direction	Wind Spd (kts)		Wave Ht (m)	Sea State	Humidity (%)	Prob of Rain (%)	Amount of Rain (mm)
		Max	Min				Gusting	Avg					
28-12-24 (Saturday)	0001	26	17	22	1016	NE	15	12	0.5	2	78	11	0.0
	0600			23	1017	NNE	14	8	0.5	2	83	10	0.0
	1200			25	1014	NW	10	7	0.4	2	59	10	0.0
	1800			24	1015	WNW	10	8	0.3	2	72	14	0.0
29-12-24 (Sunday)	0001	26	19	23	1015	NE	10	8	0.3	2	77	12	0.0
	0600			22	1017	NNE	13	9	0.3	2	84	11	0.0
	1200			25	1012	NW	14	9	0.3	2	61	10	0.0
	1800			24	1015	NE	13	7	0.3	2	69	10	0.0
30-12-24 (Monday)	0001	26	18	23	1015	NE	14	10	0.5	2	77	12	0.0
	0600			21	1016	NNE	16	13	0.4	2	78	12	0.0
	1200			24	1012	NW	18	13	0.4	2	69	11	0.0
	1800			23	1014	NE	17	12	0.3	2	76	10	0.0
31-12-24 (Tuesday)	0001	25	17	22	1014	NNE	16	13	0.5	2	83	13	0.0
	0600			20	1016	NNW	18	12	0.3	2	81	14	0.0
	1200			24	1012	NNW	16	11	0.5	2	70	12	0.0
	1800			21	1014	NW	16	11	0.3	2	74	10	0.0

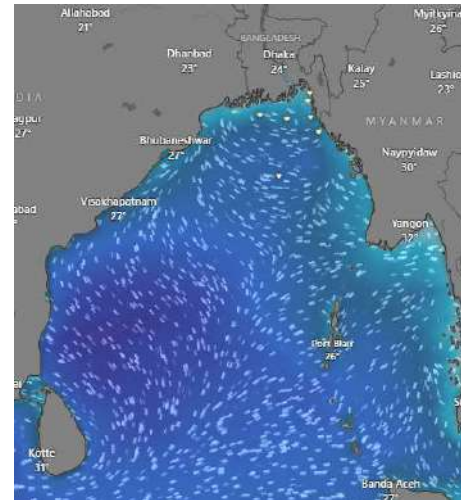
**28 Dec 2024**



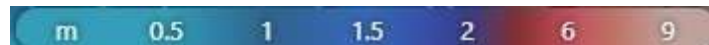
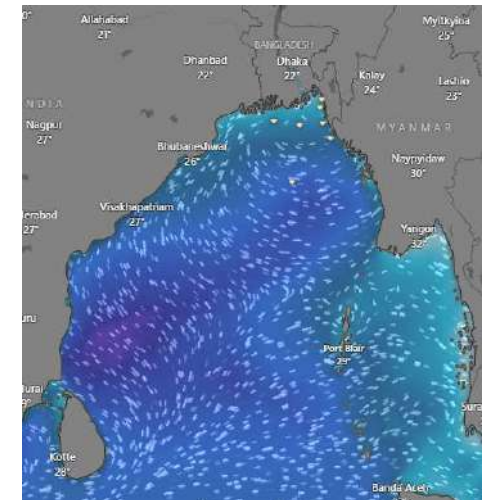
**29 Dec 2024**



**30 Dec 2024**



**31 Dec 2024**



Significant wave height (m)



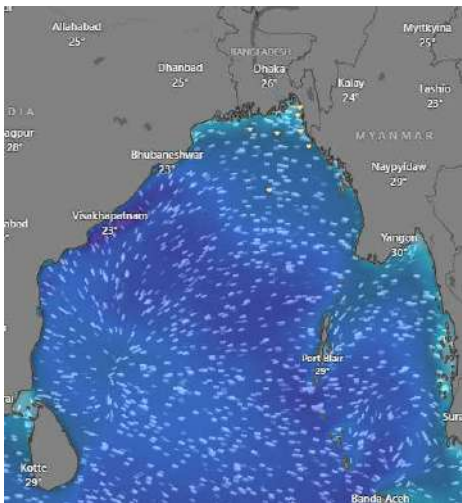


# MARINE WEATHER FORECAST (24 to 31 Dec 2024) ABEAM TO ELEPHANT POINT (21° 11' N, 091° 52' E)

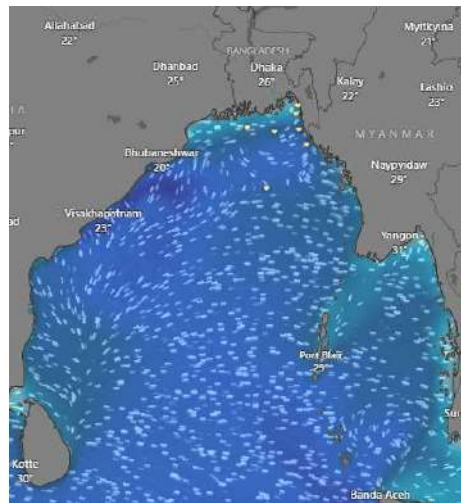


Date	Time	Air Temp (°C)		Sea Surface Temp (°C)	Baro Pressure (mbar)	Wind Direction	Wind Spd (kts)		Wave Ht (m)	Sea State	Humidity (%)	Prob of Rain (%)	Amount of Rain (mm)
		Max	Min				Gusting	Avg					
24-12-24 (Tuesday)	0001	27	19	25	1014	N	14	10	0.9	3	76	10	0.0
	0600			24	1014	N	17	12	0.9	3	74	14	0.0
	1200			25	1013	NNW	14	9	0.9	3	48	11	0.0
	1800			24	1014	NNW	16	12	0.9	3	65	12	0.0
25-12-24 (Wednesday)	0001	26	19	25	1015	N	15	12	0.9	3	76	10	0.0
	0600			23	1017	N	17	12	0.9	3	73	14	0.0
	1200			25	1014	N	21	15	0.9	3	56	11	0.0
	1800			24	1016	NNW	24	13	1.0	3	75	10	0.0
26-12-24 (Thursday)	0001	28	18	24	1016	N	19	14	0.8	3	77	10	0.0
	0600			23	1018	N	18	13	0.8	3	75	14	0.0
	1200			26	1015	N	17	13	0.8	3	51	11	0.0
	1800			25	1016	NNW	18	11	0.8	3	67	12	0.0
27-12-24 (Friday)	0001	28	17	25	1014	NE	18	14	0.8	3	75	20	0.0
	0600			23	1017	NE	19	13	0.9	3	79	24	0.0
	1200			25	1015	NE	18	13	0.9	3	50	24	0.0
	1800			24	1016	N	19	15	0.9	3	67	10	0.0

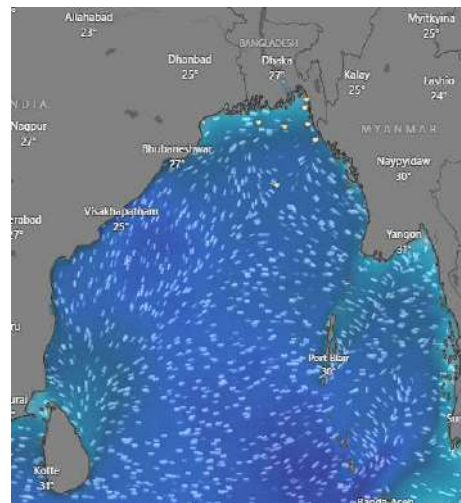
**24 Dec 2024**



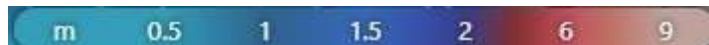
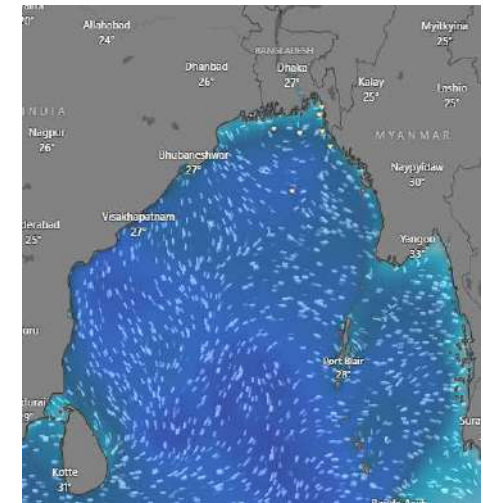
**25 Dec 2024**



**26 Dec 2024**



**27 Dec 2024**



Significant wave height (m)

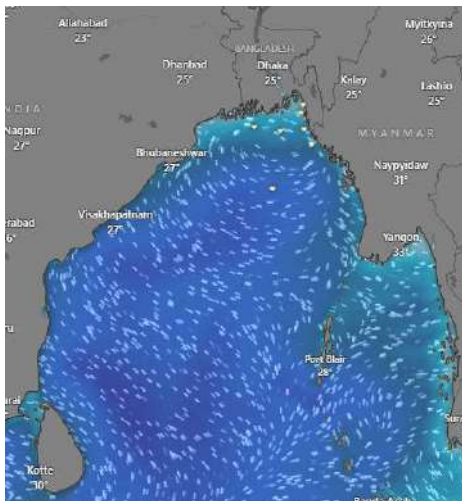


# MARINE WEATHER FORECAST (24 to 31 Dec 2024) ABEAM TO ELEPHANT POINT (21° 11' N, 091° 52' E)

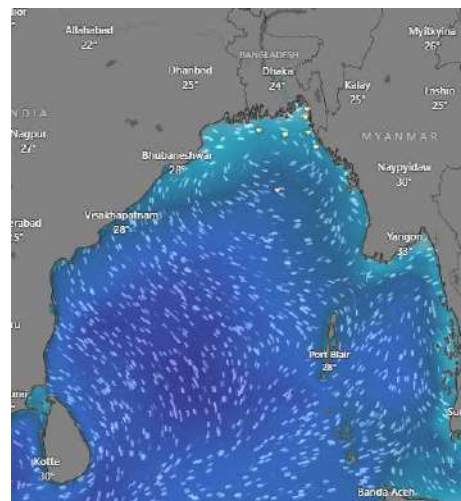


Date	Time	Air Temp (°C)		Sea Surface Temp (°C)	Baro Pressure (mbar)	Wind Direction	Wind Spd (kts)		Wave Ht (m)	Sea State	Humidity (%)	Prob of Rain (%)	Amount of Rain (mm)
		Max	Min				Gusting	Avg					
28-12-24 (Saturday)	0001	27	17	24	1016	NNE	18	14	0.9	3	76	12	0.0
	0600			23	1017	NNE	19	13	0.9	3	84	20	0.0
	1200			26	1014	NE	18	11	0.9	3	46	24	0.0
	1800			25	1015	NNE	15	10	0.7	3	68	10	0.0
29-12-24 (Sunday)	0001	28	18	24	1015	NE	13	10	0.6	3	74	12	0.0
	0600			23	1017	NNE	15	11	0.6	3	84	20	0.0
	1200			26	1013	N	17	12	0.6	3	52	24	0.0
	1800			24	1015	NNE	16	11	0.7	3	70	19	0.0
30-12-24 (Monday)	0001	28	18	25	1015	NE	14	11	0.7	3	79	10	0.0
	0600			23	1016	NNE	19	15	0.8	3	80	12	0.0
	1200			25	1012	SSE	21	16	0.8	3	52	11	0.0
	1800			24	1013	SSE	21	13	0.7	3	67	16	0.0
31-12-24 (Tuesday)	0001	26	17	25	1014	E	18	13	0.8	3	76	12	0.0
	0600			23	1014	NNE	19	13	0.7	3	77	13	0.0
	1200			25	1011	SSE	17	14	0.7	3	64	15	0.0
	1800			24	1012	S	15	13	0.8	3	74	14	0.0

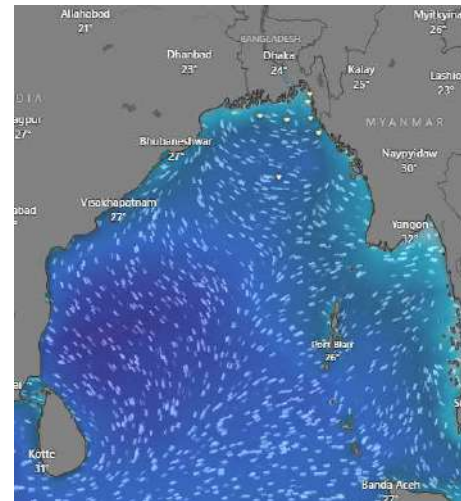
**28 Dec 2024**



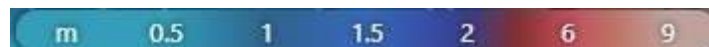
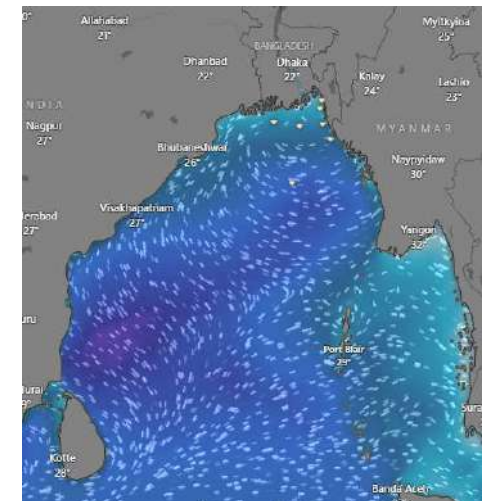
**29 Dec 2024**



**30 Dec 2024**



**31 Dec 2024**



Significant wave height (m)



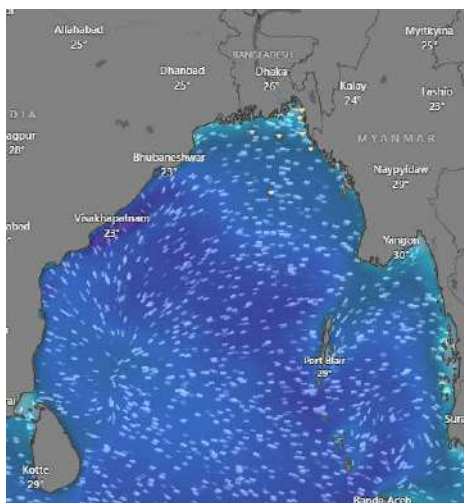


# MARINE WEATHER FORECAST (24 to 31 Dec 2024) ABEAM TO ST. MARTIN'S LIGHT HOUSE (20° 37' N, 092° 08' E)

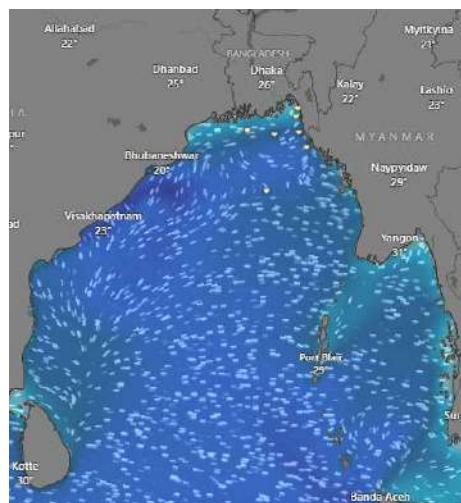


Date	Time	Air Temp (°C)		Sea Surface Temp (°C)	Baro Pressure (mbar)	Wind Direction	Wind Spd (kts)		Wave Ht (m)	Sea State	Humidity (%)	Prob of Rain (%)	Amount of Rain (mm)
		Max	Min				Gusting	Avg					
24-12-24 (Tuesday)	0001	28	20	25	1014	NNW	16	12	1.0	3	68	12	0.0
	0600			24	1015	N	19	11	1.0	3	70	10	0.0
	1200			25	1013	N	9	5	1.0	3	53	10	0.0
	1800			24	1014	NW	16	12	1.0	3	64	11	0.0
25-12-24 (Wednesday)	0001	28	20	26	1014	NNW	17	11	1.0	3	70	14	0.0
	0600			25	1016	N	17	13	1.0	3	69	12	0.0
	1200			26	1013	NNW	21	16	1.1	3	50	13	0.0
	1800			25	1015	NNW	26	18	1.3	4	63	15	0.0
26-12-24 (Thursday)	0001	30	19	26	1015	N	21	15	1.0	3	70	12	0.0
	0600			25	1017	N	22	16	1.0	3	72	10	0.0
	1200			26	1014	N	19	12	1.0	3	48	10	0.0
	1800			25	1015	NNW	18	13	1.0	3	64	12	0.0
27-12-24 (Friday)	0001	29	18	26	1014	E	21	16	0.6	3	70	12	0.0
	0600			24	1016	ENE	20	12	0.7	3	75	20	0.0
	1200			26	1013	E	10	7	0.7	3	48	24	0.0
	1800			25	1014	NE	16	12	0.8	3	68	10	0.0

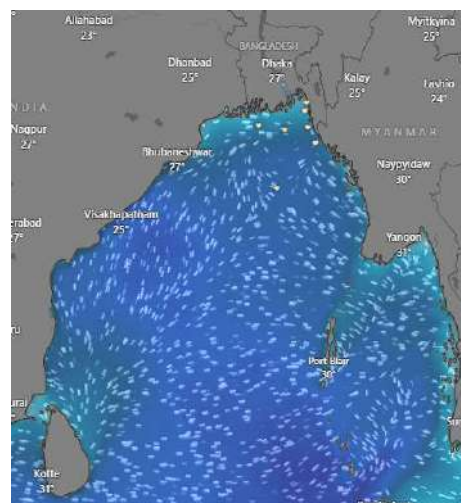
**24 Dec 2024**



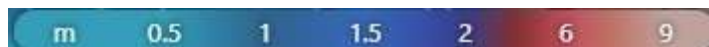
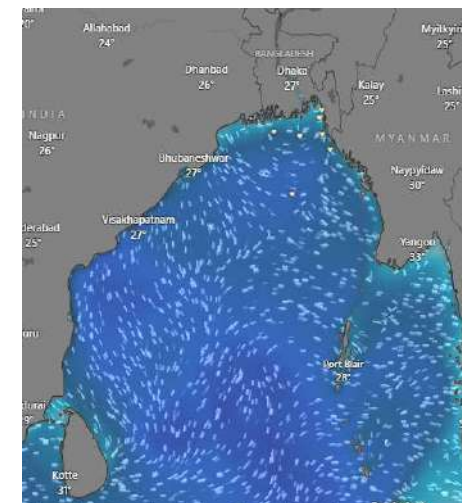
**25 Dec 2024**



**26 Dec 2024**



**27 Dec 2024**



Significant wave height (m)



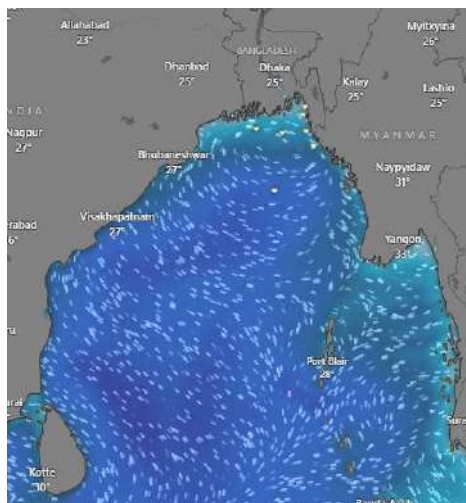


# MARINE WEATHER FORECAST (24 to 31 Dec 2024) ABEAM TO ST. MARTIN'S LIGHT HOUSE (20° 37' N, 092° 08' E)

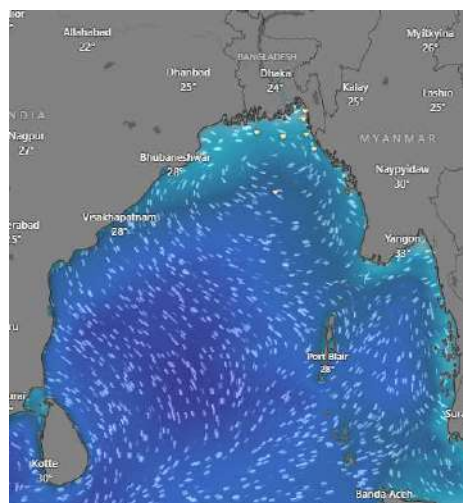


Date	Time	Air Temp (°C)		Sea Surface Temp (°C)	Baro Pressure (mbar)	Wind Direction	Wind Spd (kts)		Wave Ht (m)	Sea State	Humidity (%)	Prob of Rain (%)	Amount of Rain (mm)
		Max	Min				Gusting	Avg					
28-12-24 (Saturday)	0001	29	18	26	1016	NE	24	18	1.0	3	75	12	0.0
	0600			25	1015	NNE	26	17	1.1	3	79	14	0.0
	1200			26	1014	NW	19	14	0.9	3	55	15	0.0
	1800			25	1016	WNW	19	14	0.9	3	72	10	0.0
29-12-24 (Sunday)	0001	29	19	26	1015	NE	18	13	0.9	3	73	12	0.0
	0600			25	1016	NNE	19	14	0.8	3	79	15	0.0
	1200			26	1012	NW	19	13	0.8	3	59	12	0.0
	1800			26	1015	NE	19	14	0.8	3	76	13	0.0
30-12-24 (Monday)	0001	29	19	26	1015	NE	19	14	0.9	3	79	12	0.0
	0600			26	1013	NNE	20	16	1.0	3	81	13	0.0
	1200			26	1014	NW	20	17	1.1	3	56	12	0.0
	1800			25	1015	NE	19	15	1.1	3	69	11	0.0
31-12-24 (Tuesday)	0001	27	18	26	1014	NE	23	17	1.1	3	70	12	0.0
	0600			24	1014	NNE	23	17	1.0	3	72	13	0.0
	1200			26	1011	NW	22	15	0.9	3	61	12	0.0
	1800			25	1012	NE	21	16	0.9	3	71	11	0.0

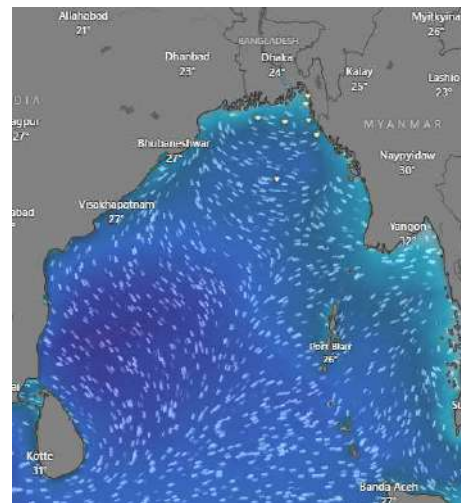
**28 Dec 2024**



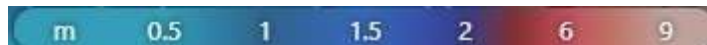
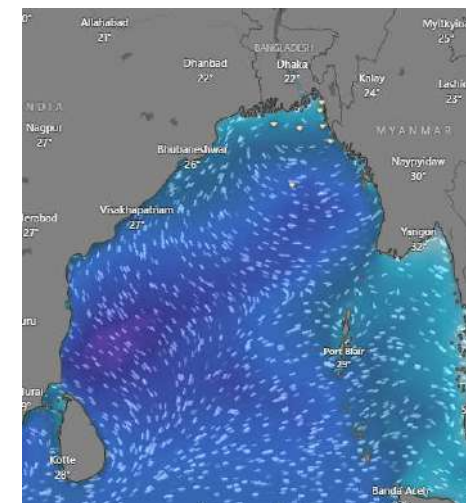
**29 Dec 2024**



**30 Dec 2024**



**31 Dec 2024**



Significant wave height (m)



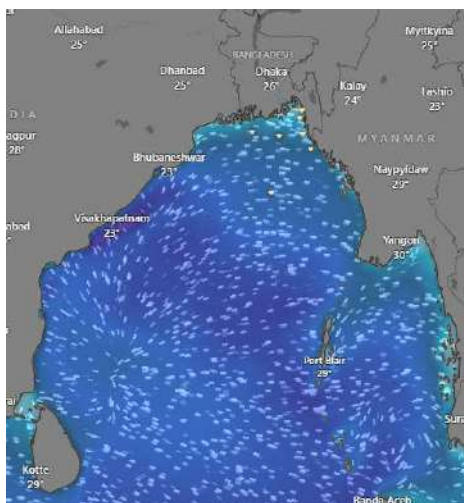
# MARINE WEATHER FORECAST (24 to 31 Dec 2024)

## PAYRA FAIRWAY (21° 22' N, 090° 6' E)

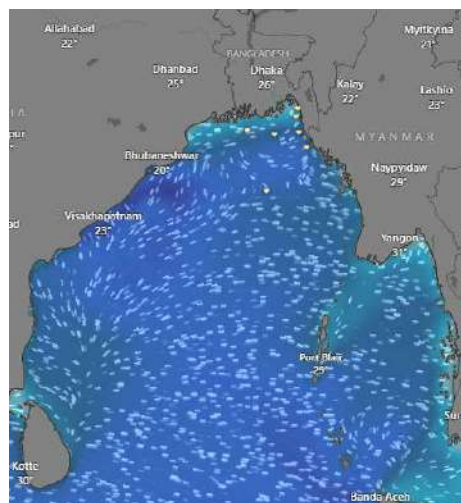


Date	Time	Air Temp (°C)		Sea Surface Temp (°C)	Baro Pressure (mbar)	Wind Direction	Wind Spd (kts)		Wave Ht (m)	Sea State	Humidity (%)	Prob of Rain (%)	Amount of Rain (mm)
		Max	Min				Gusting	Avg					
24-12-24 (Tuesday)	0001	27	19	24	1014	N	13	10	0.9	3	80	12	0.0
	0600			23	1016	N	16	12	0.9	3	84	10	0.0
	1200			24	1013	N	15	8	1.0	3	52	10	0.0
	1800			23	1015	N	11	8	0.9	3	66	12	0.0
25-12-24 (Wednesday)	0001	25	18	24	1015	NNW	11	8	0.9	3	77	10	0.0
	0600			23	1017	N	18	13	1.0	3	78	12	0.0
	1200			24	1015	N	22	16	1.1	3	60	10	0.0
	1800			23	1017	N	16	8	0.8	3	70	10	0.0
26-12-24 (Thursday)	0001	28	18	24	1016	N	17	12	0.8	3	79	12	0.0
	0600			24	1017	NNE	14	10	0.8	3	82	10	0.0
	1200			25	1015	NNE	15	10	0.8	3	52	12	0.0
	1800			24	1017	NNE	13	8	0.8	3	62	10	0.0
27-12-24 (Friday)	0001	28	17	24	1013	NE	17	12	0.9	3	74	10	0.0
	0600			23	1016	NNE	18	13	1.0	3	79	12	0.0
	1200			24	1013	NW	18	14	1.0	3	48	24	0.0
	1800			23	1014	NE	18	14	0.9	3	62	10	0.0

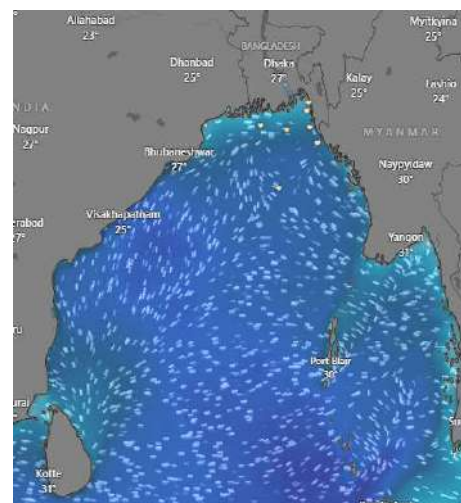
**24 Dec 2024**



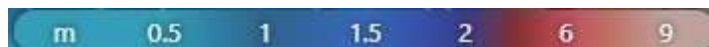
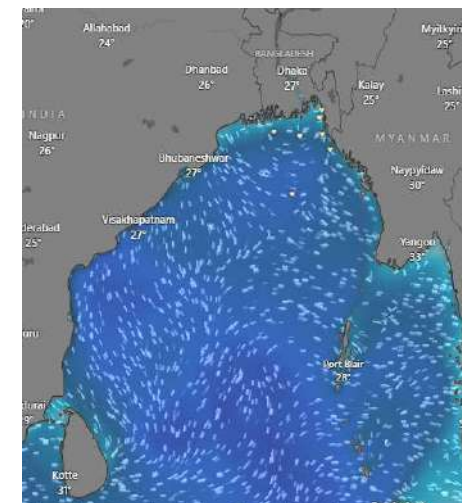
**25 Dec 2024**



**26 Dec 2024**



**27 Dec 2024**



Significant wave height (m)





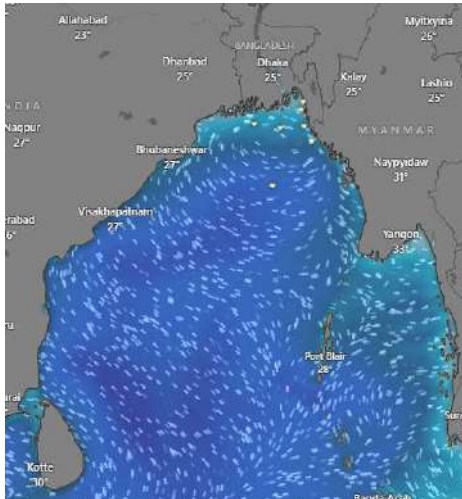
# MARINE WEATHER FORECAST (24 to 31 Dec 2024)

## PAYRA FAIRWAY (21° 22' N, 090° 6' E)

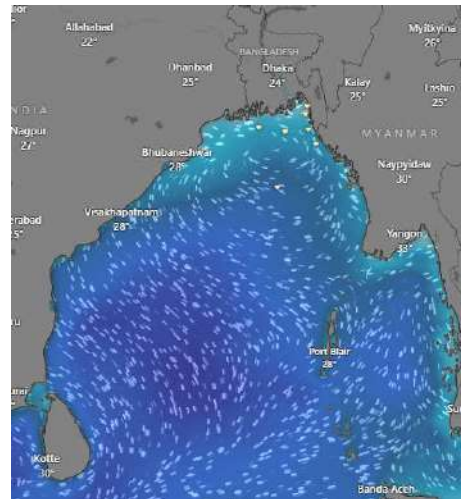


Date	Time	Air Temp (°C)		Sea Surface Temp (°C)	Baro Pressure (mbar)	Wind Direction	Wind Spd (kts)		Wave Ht (m)	Sea State	Humidity (%)	Prob of Rain (%)	Amount of Rain (mm)
		Max	Min				Gusting	Avg					
28-12-24 (Saturday)	0001	27	17	24	1016	NE	15	10	0.8	3	80	12	0.0
	0600			23	1017	NNE	16	11	0.8	3	84	20	0.0
	1200			24	1014	NW	12	9	0.7	3	61	24	0.0
	1800			24	1015	WNW	10	5	0.6	3	71	10	0.0
29-12-24 (Sunday)	0001	27	19	25	1015	NE	14	11	0.6	3	79	12	0.0
	0600			24	1017	NNE	15	10	0.6	3	84	12	0.0
	1200			25	1013	NW	16	11	0.5	3	50	13	0.0
	1800			24	1015	NE	15	8	0.6	3	66	12	0.0
30-12-24 (Monday)	0001	27	18	25	1015	NE	15	12	0.7	3	77	12	0.0
	0600			24	1016	NNE	18	14	0.7	3	76	10	0.0
	1200			23	1013	NW	21	13	0.7	3	54	12	0.0
	1800			24	1015	NE	17	9	0.6	3	68	11	0.0
31-12-24 (Tuesday)	0001	26	16	24	1014	NE	15	12	0.9	3	77	12	0.0
	0600			23	1016	NNE	18	11	0.7	3	80	10	0.0
	1200			24	1013	NW	18	10	0.7	3	56	12	0.0
	1800			23	1016	NE	15	12	0.7	3	67	11	0.0

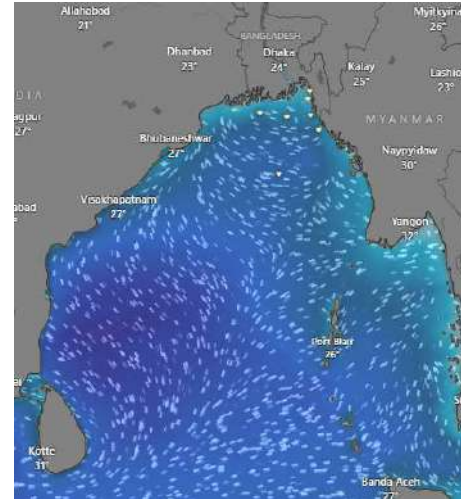
**28 Dec 2024**



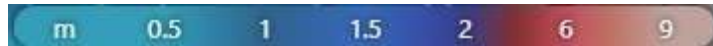
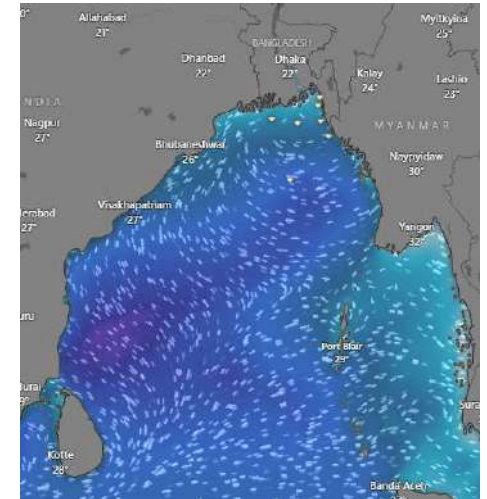
**29 Dec 2024**



**30 Dec 2024**



**31 Dec 2024**



Significant wave height (m)



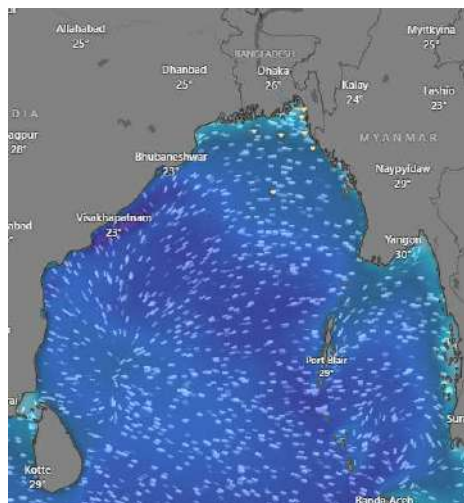
# MARINE WEATHER FORECAST (24 to 31 Dec 2024)

## MONGLA FAIRWAY (21° 26' N, 089° 34' E)

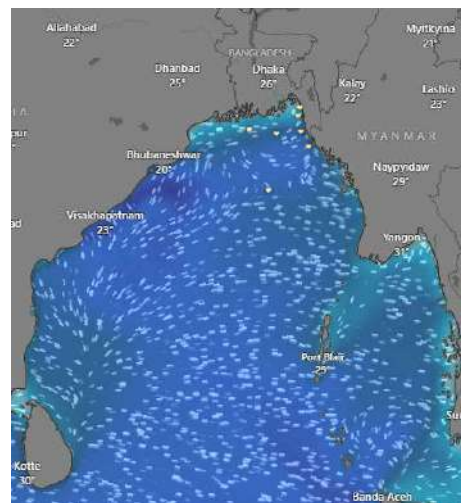


Date	Time	Air Temp (°C)		Sea Surface Temp (°C)	Baro Pressure (mbar)	Wind Direction	Wind Spd (kts)		Wave Ht (m)	Sea State	Humidity (%)	Prob of Rain (%)	Amount of Rain (mm)
		Max	Min				Gusting	Avg					
24-12-24 (Tuesday)	0001	27	18	24	1014	NNE	14	10	0.9	3	80	10	0.0
	0600			22	1017	N	14	10	1.0	3	84	14	0.0
	1200			24	1013	N	14	9	1.0	3	45	11	0.0
	1800			23	1015	WNW	9	5	0.9	3	60	12	0.0
25-12-24 (Wednesday)	0001	26	17	24	1015	N	9	7	0.9	3	78	10	0.0
	0600			23	1017	NNE	18	12	0.9	3	81	14	0.0
	1200			24	1014	NNE	19	10	0.9	3	51	11	0.0
	1800			23	1015	WNW	12	5	0.8	3	64	12	0.0
26-12-24 (Thursday)	0001	29	17	24	1016	N	9	6	0.7	3	82	10	0.0
	0600			23	1017	NNE	14	10	0.7	3	84	14	0.0
	1200			24	1015	NNE	14	9	0.8	3	46	11	0.0
	1800			24	1017	NNW	7	5	0.7	3	59	12	0.0
27-12-24 (Friday)	0001	28	16	24	1015	NE	17	13	0.8	3	79	24	0.0
	0600			23	1017	NNE	19	13	0.9	3	82	24	0.0
	1200			25	1015	NW	17	11	0.9	3	46	15	0.0
	1800			24	1017	NE	15	12	0.8	3	57	10	0.0

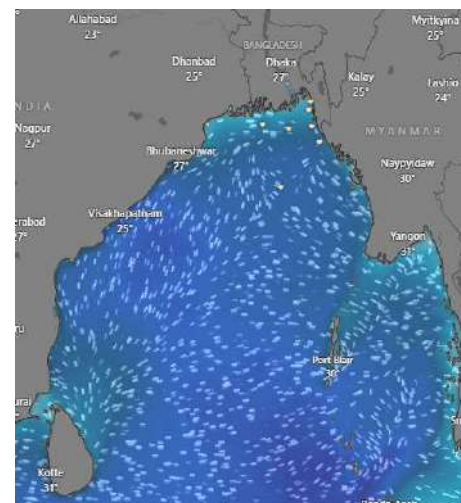
**24 Dec 2024**



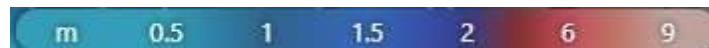
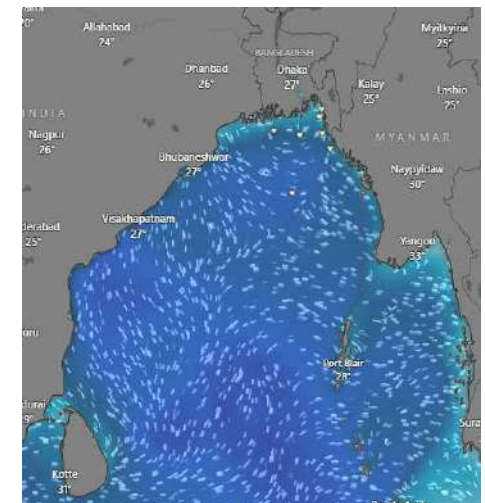
**25 Dec 2024**



**26 Dec 2024**



**27 Dec 2024**



Significant wave height (m)





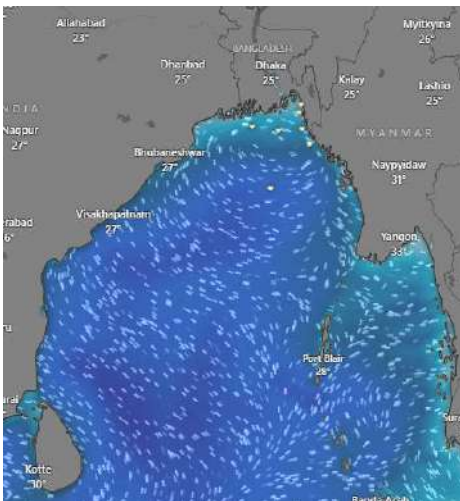
# MARINE WEATHER FORECAST (24 to 31 Dec 2024)

## MONGLA FAIRWAY (21° 26' N, 089° 34' E)

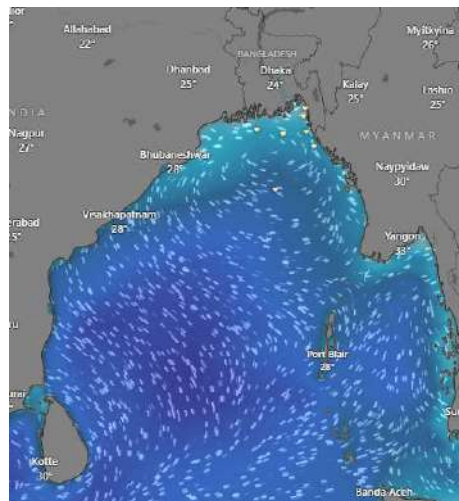


Date	Time	Air Temp (°C)		Sea Surface Temp (°C)	Baro Pressure (mbar)	Wind Direction	Wind Spd (kts)		Wave Ht (m)	Sea State	Humidity (%)	Prob of Rain (%)	Amount of Rain (mm)
		Max	Min				Gusting	Avg					
28-12-24 (Saturday)	0001	28	16	25	1017	NE	13	9	0.7	3	83	13	0.0
	0600			24	1017	NNE	13	10	0.8	3	89	14	0.0
	1200			25	1015	NW	14	8	0.7	3	57	24	0.0
	1800			24	1016	WNW	7	5	0.6	3	66	24	0.0
29-12-24 (Sunday)	0001	28	18	24	1015	NE	12	9	0.5	3	83	24	0.0
	0600			23	1017	NNE	12	9	0.5	3	88	24	0.0
	1200			25	1014	NW	16	9	0.5	3	46	10	0.0
	1800			24	1016	NE	13	5	0.5	3	60	9	0.0
30-12-24 (Monday)	0001	28	16	25	1015	NE	14	10	0.7	3	82	12	0.0
	0600			24	1016	NNE	18	14	0.7	3	87	10	0.0
	1200			25	1013	NW	20	11	0.7	3	55	12	0.0
	1800			24	1014	NE	15	4	0.9	3	66	11	0.0
31-12-24 (Tuesday)	0001	26	15	24	1015	NE	17	12	0.9	3	81	12	0.0
	0600			23	1016	NNE	18	9	0.6	3	87	10	0.0
	1200			25	1012	NW	16	8	0.8	3	55	12	0.0
	1800			24	1015	NE	13	9	0.7	3	62	11	0.0

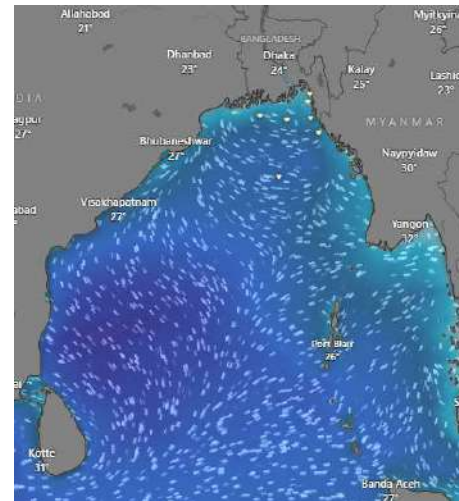
**28 Dec 2024**



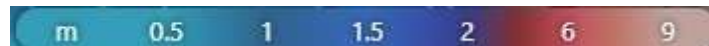
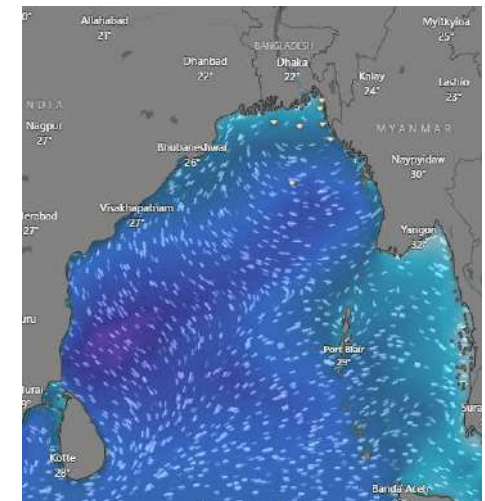
**29 Dec 2024**



**30 Dec 2024**



**31 Dec 2024**



Significant wave height (m)



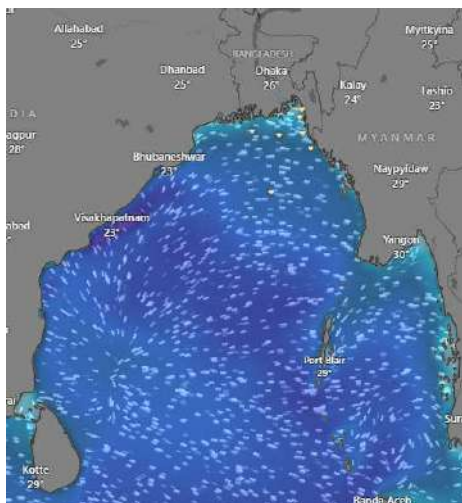
# MARINE WEATHER FORECAST (24 to 31 Dec 2024)

## OUTER EEZ (18° 48' N, 090° 30' E)

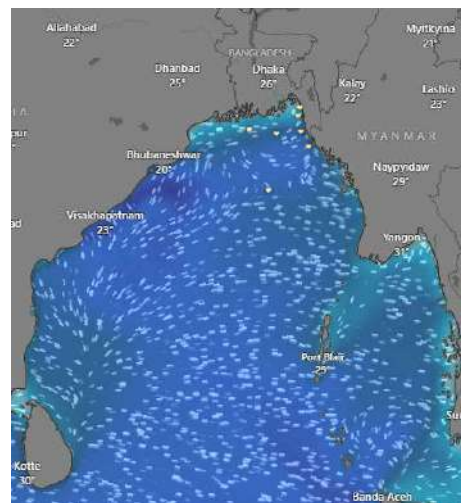


Date	Time	Air Temp (°C)		Sea Surface Temp (°C)	Baro Pressure (mbar)	Wind Direction	Wind Spd (kts)		Wave Ht (m)	Sea State	Humidity (%)	Prob of Rain (%)	Amount of Rain (mm)
		Max	Min				Gusting	Avg					
24-12-24 (Tuesday)	0001	28	20	25	1014	NE	13	9	1.3	4	68	12	0.0
	0600			26	1014	NNE	14	10	1.2	3	70	10	0.0
	1200			26	1013	NNE	15	11	1.3	4	53	10	0.0
	1800			25	1015	NNE	15	11	1.3	4	64	11	0.0
25-12-24 (Wednesday)	0001	28	20	25	1015	N	10	6	1.2	3	70	14	0.0
	0600			26	1016	NNE	13	10	1.1	3	69	12	0.0
	1200			26	1014	N	17	13	1.2	3	50	13	0.0
	1800			25	1016	N	20	15	1.3	4	63	15	0.0
26-12-24 (Thursday)	0001	30	19	26	1016	NNE	18	13	1.4	4	70	12	0.0
	0600			26	1015	NNE	17	12	1.3	4	72	10	0.0
	1200			26	1014	NNE	17	11	1.2	3	48	10	0.0
	1800			25	1017	NNE	17	12	1.2	3	64	12	0.0
27-12-24 (Friday)	0001	29	18	25	1014	NE	18	14	1.2	3	70	12	0.0
	0600			26	1017	NNE	21	15	1.4	4	75	20	0.0
	1200			25	1014	NW	18	14	1.3	4	48	24	0.0
	1800			24	1015	NE	18	14	1.3	4	68	10	0.0

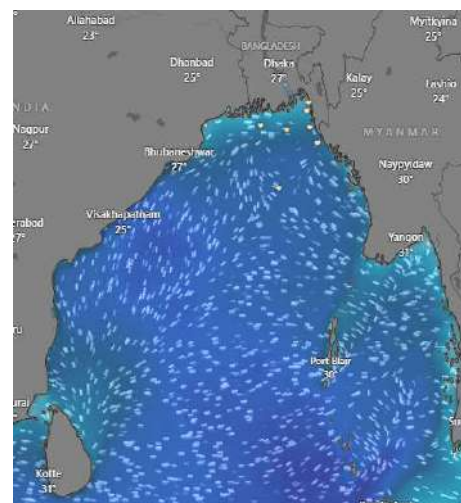
**24 Dec 2024**



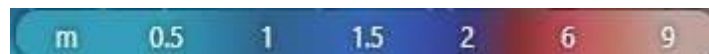
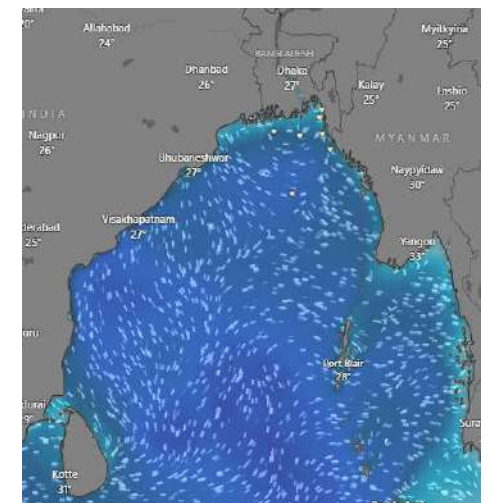
**25 Dec 2024**



**26 Dec 2024**



**27 Dec 2024**



Significant wave height (m)



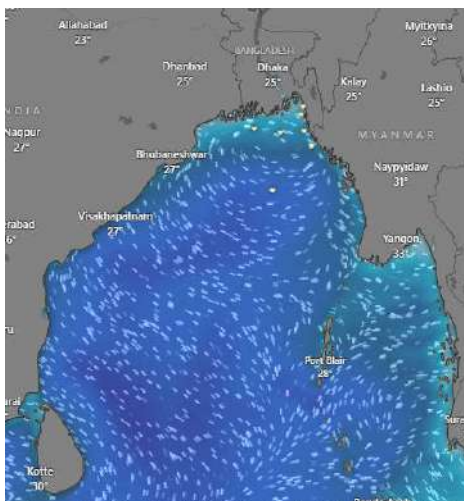


## MARINE WEATHER FORECAST (24 to 31 Dec 2024) OUTER EEZ (18° 48' N, 090° 30' E)

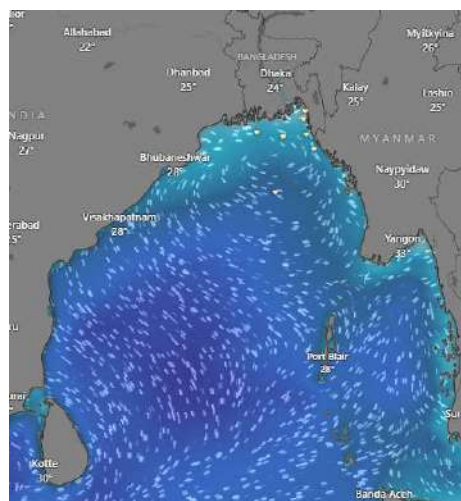


Date	Time	Air Temp (°C)		Sea Surface Temp (°C)	Baro Pressure (mbar)	Wind Direction	Wind Spd (kts)		Wave Ht (m)	Sea State	Humidity (%)	Prob of Rain (%)	Amount of Rain (mm)
		Max	Min				Gusting	Avg					
28-12-24 (Saturday)	0001	29	18	26	1015	NE	19	15	1.3	3	89	12	0.0
	0600			25	1017	NNE	22	17	1.4	3	91	20	0.0
	1200			26	1014	NW	23	16	1.4	3	82	24	0.0
	1800			26	1015	WNW	24	13	1.2	3	83	10	0.0
29-12-24 (Sunday)	0001	29	19	26	1015	NE	17	13	1.1	3	92	24	0.0
	0600			26	1016	NNE	19	14	1.1	3	93	10	0.0
	1200			26	1013	NW	20	16	1.1	3	66	9	0.0
	1800			26	1015	NE	20	13	1.0	3	77	9	0.0
30-12-24 (Monday)	0001	29	19	26	1015	NE	17	11	1.1	3	84	12	0.0
	0600			25	1016	NNE	23	17	1.4	3	88	10	0.0
	1200			27	1012	NW	19	14	1.4	3	61	12	0.0
	1800			26	1014	NE	22	15	1.3	3	65	11	0.0
31-12-24 (Tuesday)	0001	27	18	26	1014	NE	19	15	1.5	3	87	12	0.0
	0600			25	1016	NNE	24	14	1.4	3	89	10	0.0
	1200			26	1012	NW	18	14	1.2	3	55	12	0.0
	1800			26	1013	NE	19	14	1.1	3	64	11	0.0

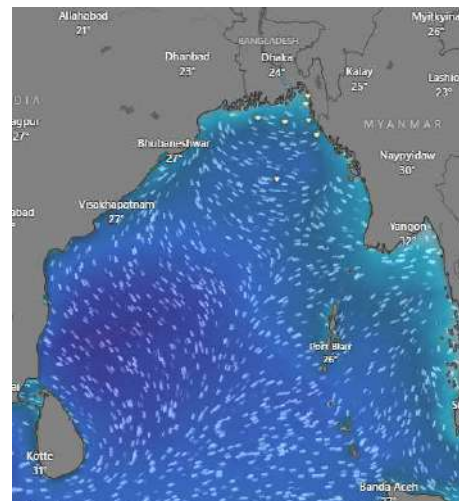
**28 Dec 2024**



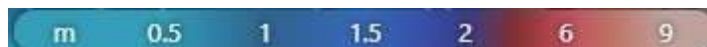
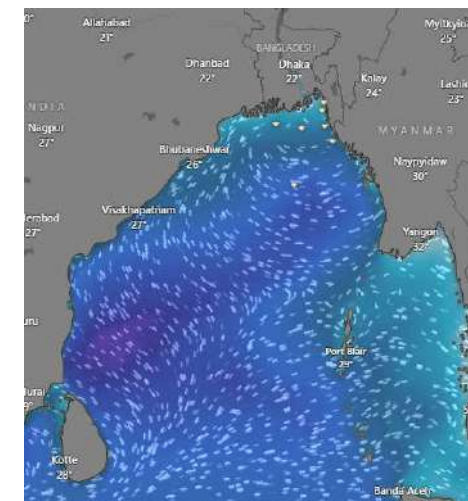
**29 Dec 2024**



**30 Dec 2024**



**31 Dec 2024**



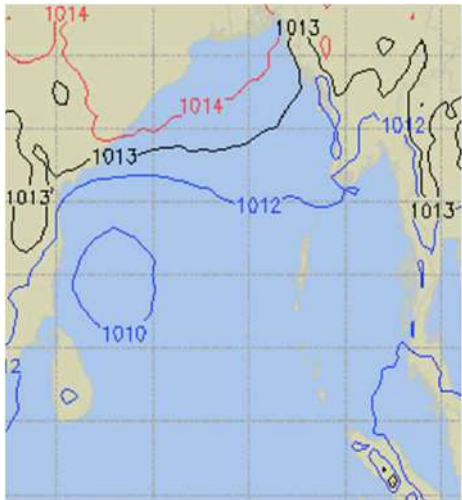
Significant wave height (m)



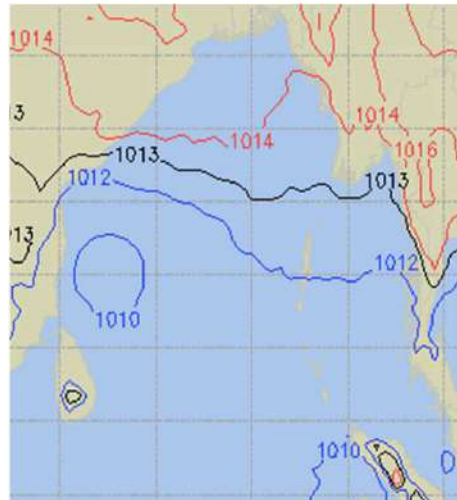
# PREDICTED SURFACE PRESSURE FORECAST (24 to 30 Dec 2024)



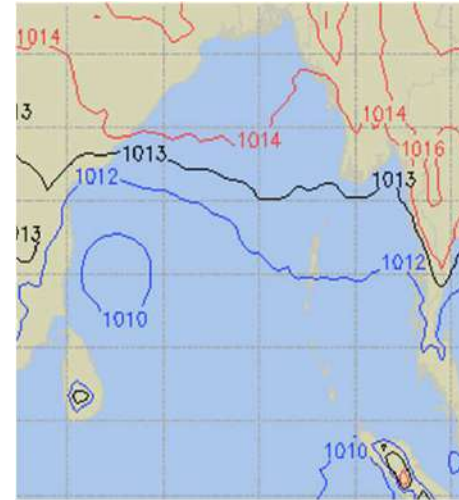
**24 Dec 2024**



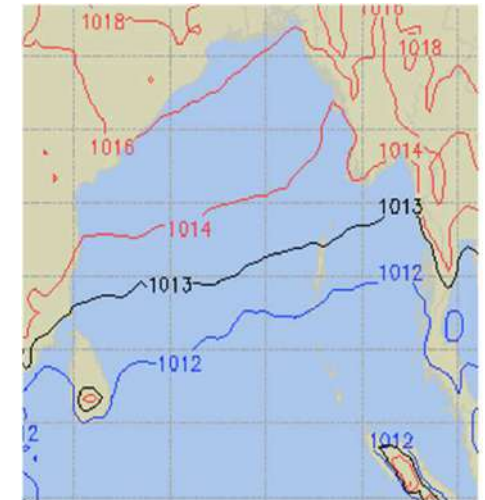
**25 Dec 2024**



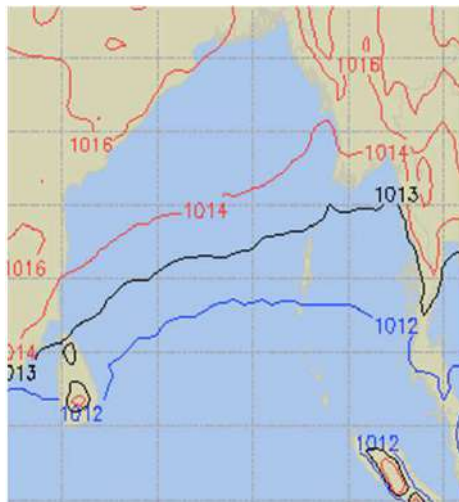
**26 Dec 2024**



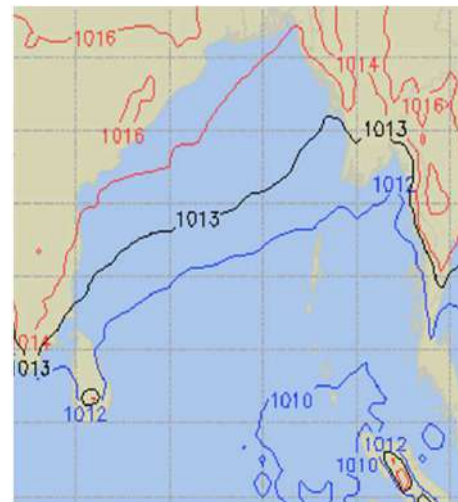
**27 Dec 2024**



**28 Dec 2024**



**29 Dec 2024**



**30 Dec 2024**

