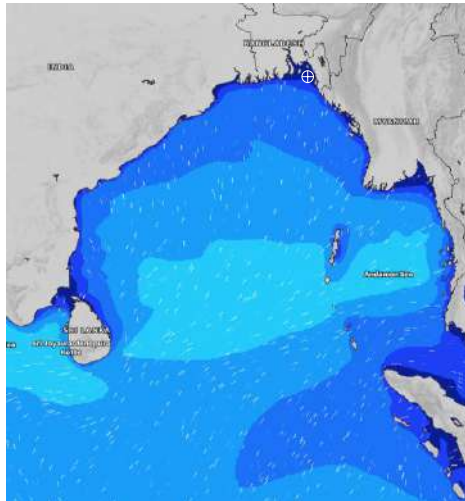


# MARINE WEATHER FORECAST- NEAR AUTHORITY BUOY (Lat 22° 12' N, Long 091° 38' E)

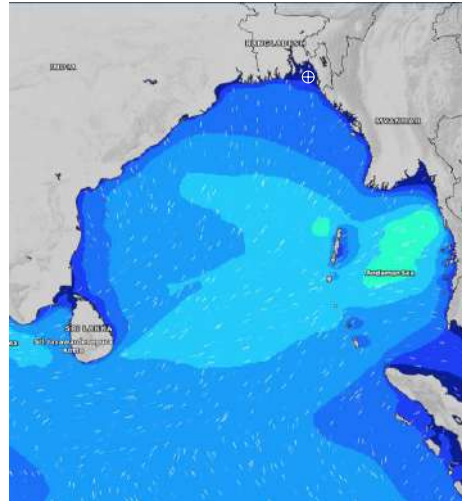
**DATE : 24 June to 01 July 2024**

Date	Time	Max Wind Spd (kts)	Wind Direction	Wave Ht (m)	Sea State	Baro Pressure	Air Temp		Sea Surface Temp	Humidity (%)	Prb of Rain (%)	Sea State	Wave Ht (m)
							Max	Min					
24-06-24	0001	10	S	0.2	2	1003	30	26	29	90%	49% (0.4 mm)	0	0
	0600	9	SE	0.1	1	1003			28	93%	47% (0.3 mm)	1	0 - 0.1
	1200	11	SSW	0.3	2	1003			29	81%	38% (0.2 mm)	2	0.1 - 0.5
	1800	12	SSW	0.2	2	1001			29	87%	24% (0.0 mm)	3	0.5 - 1.25
25-06-24	0001	12	SSE	0.2	2	1002	30	27	29	91%	44% (0.4 mm)	4	1.25 - 2.5
	0600	11	SSE	0.3	2	1001			28	94%	49% (0.4 mm)	5	2.5 - 4.0
	1200	6	SSE	0.2	2	1002			28	81%	49% (0.4 mm)	6	4.0 - 6.0
	1800	5	SSE	0.1	1	1000			29	86%	24% (0.1 mm)	7	6.0 - 9.0
26-06-24	0001	6	S	0.1	1	1001	30	26	28	91%	36% (0.2 mm)	8	9.0 - 14.0
	0600	6	ESE	0.1	1	1000			28	94%	49% (0.4 mm)	9	Over 14.0
	1200	7	WSW	0.1	1	1000			29	82%	49% (0.4 mm)		
	1800	4	WSW	0.1	1	999			30	86%	24% (0.1 mm)		
27-06-24	0001	2	ENE	0.1	1	1000	31	26	28	91%	36% (0.2 mm)		
	0600	4	NNE	0.1	1	1001			28	94%	49% (0.4 mm)		
	1200	6	WSW	0.1	1	1001			30	82%	49% (0.4 mm)		
	1800	6	SW	0.1	1	1000			30	86%	24% (0.1 mm)		

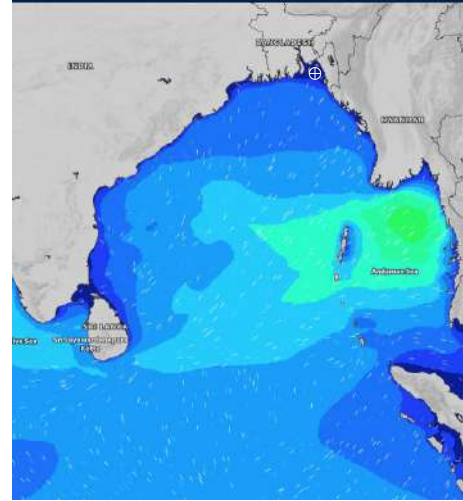
**24 June 24 Mon (Probability 98%)**



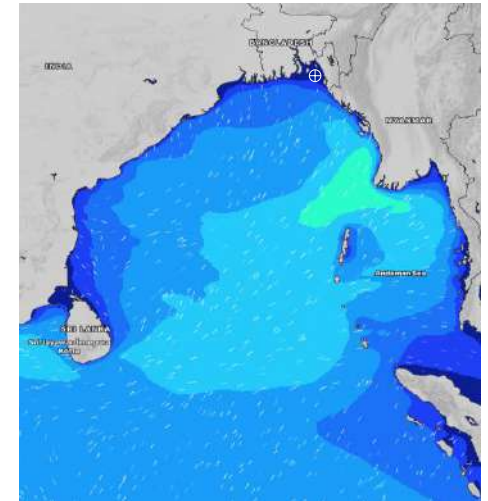
**25 June 24 Tue (Probability 95%)**



**26 June 24 Wed (Probability 90%)**



**27 June 24 Thu (Probability 80%)**



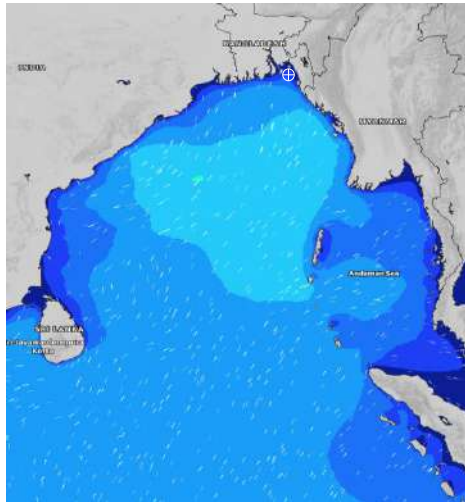
Significant wave height (m)

# MARINE WEATHER FORECAST- NEAR AUTHORITY BUOY (Lat 22° 12' N, Long 091° 38' E)

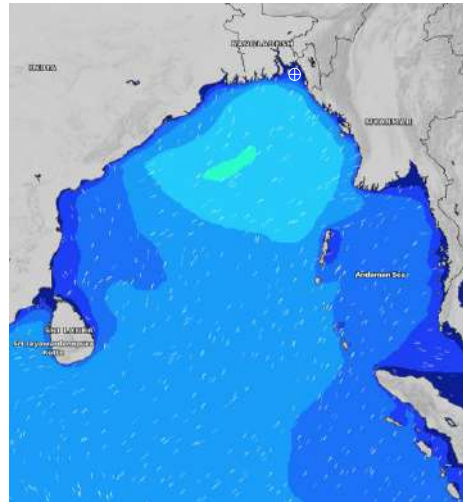
**DATE : 24 June to 01 July 2024**

Date	Time	Max Wind Spd (kts)	Wind Direction	Wave Ht (m)	Sea State	Baro Pressure	Air Temp		Sea Surface Temp	Humidity (%)	Prob of Rain (%)	Sea State	Wave Ht (m)
							Max	Min					
28-06-24	0001	25	SE	0.3	2	1003	30	26	28	92%	60% (0.6 mm)	0	0
	0600	25	SE	0.4	2	1003			28	92%	20% (0.0 mm)	1	0 - 0.1
	1200	24	SSE	0.5	2	1002			29	84%	45% (0.4 mm)	2	0.1 - 0.5
	1800	22	SSE	0.4	2	1001			29	86%	16% (0.0 mm)	3	0.5 - 1.25
29-06-24	0001	25	SSE	0.4	2	1003	30	26	28	90%	39% (0.3 mm)	4	1.25 - 2.5
	0600	25	SE	0.4	2	1002			27	93%	48% (0.4 mm)	5	2.5 - 4.0
	1200	25	SSE	0.5	2	1002			29	85%	50% (0.5 mm)	6	4.0 - 6.0
	1800	24	SSE	0.5	2	1001			29	86%	20% (0.1 mm)	7	6.0 - 9.0
30-06-24	0001	24	SE	0.4	2	1003	29	26	27	91%	46% (0.4 mm)	8	9.0 - 14.0
	0600	24	SSE	0.5	2	1002			27	93%	61% (0.6 mm)	9	Over 14.0
	1200	25	S	0.5	2	1003			27	83%	67% (0.6 mm)		
	1800	22	SSE	0.4	2	1001			27	88%	59% (0.4 mm)		
01-07-24	0001	21	SE	0.4	2	1002	28	26	27	91%	61% (0.6 mm)		
	0600	19	SSE	0.4	2	1002			27	93%	53% (0.4 mm)		
	1200	18	S	0.3	2	1002			27	84%	36% (0.2 mm)		
	1800	17	SSE	0.3	2	1001			27	86%	24% (0.1 mm)		

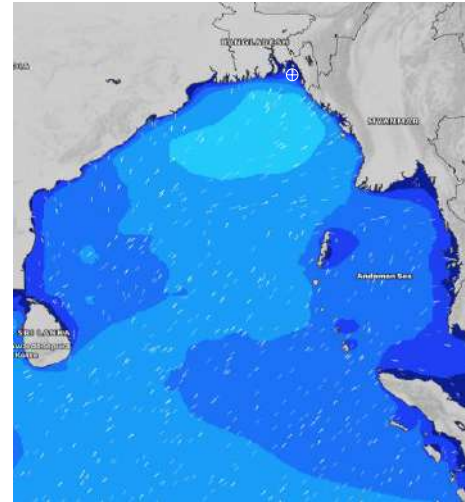
**28 June 24 Fri (Probability 70%)**



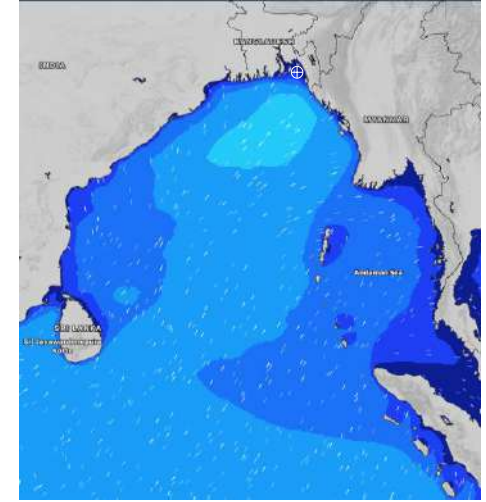
**29 June 24 Sat (Probability 60%)**



**30 June 24 Sun (Probability 50%)**



**01 July 24 Mon (Probability 50%)**



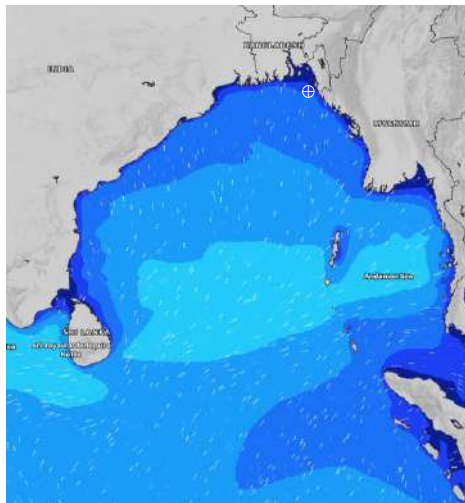
Significant wave height (m)

# MARINE WEATHER FORECAST- 20 NM WEST OF ELEPHANT POINT (Lat 21° 10' N, Long 091° 42' E)

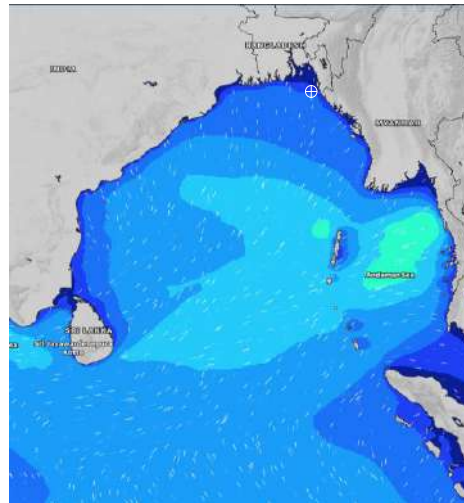
**DATE : 24 June to 01 July 2024**

Date	Time	Max Wind Spd (kts)	Wind Direction	Wave Ht (m)	Sea State	Baro Pressure	Air Temp		Sea Surface Temp	Humidity (%)	Prob of Rain (%)	Sea State	Wave Ht (m)
							Max	Min					
24-06-24	0001	8	SW	1.2	3	1003	30	26	29	89%	32% (0.2 mm)	0	0
	0600	6	SSE	1.2	3	1003			29	90%	16% (0.0 mm)	1	0 - 0.1
	1200	10	S	1.1	3	1003			29	85%	33% (0.2 mm)	2	0.1 - 0.5
	1800	10	SSW	1.1	3	1001			29	87%	17% (0.0 mm)	3	0.5 - 1.25
25-06-24	0001	9	S	1.1	3	1002	30	26	29	90%	51% (0.4 mm)	4	1.25 - 2.5
	0600	7	S	1.1	3	1001			28	93%	43% (0.4 mm)	5	2.5 - 4.0
	1200	5	S	1.1	3	1002			29	84%	52% (0.5 mm)	6	4.0 - 6.0
	1800	3	S	1.1	3	1000			29	89%	16% (0.0 mm)	7	6.0 - 9.0
26-06-24	0001	7	S	1.1	3	1001	30	26	29	90%	53% (0.4 mm)	8	9.0 - 14.0
	0600	3	SE	1.1	3	1000			29	93%	49% (0.4 mm)	9	Over 14.0
	1200	3	WSW	1.2	3	1000			29	84%	42% (0.4 mm)		
	1800	6	NW	1.2	3	999			30	89%	24% (0.1 mm)		
27-06-24	0001	5	ESE	1.1	3	1000	31	26	29	90%	53% (0.4 mm)		
	0600	9	NNE	1.1	3	1001			29	93%	49% (0.4 mm)		
	1200	9	S	1.1	3	1001			30	84%	42% (0.4 mm)		
	1800	15	SE	2.0	4	1000			29	88%	24% (0.1 mm)		

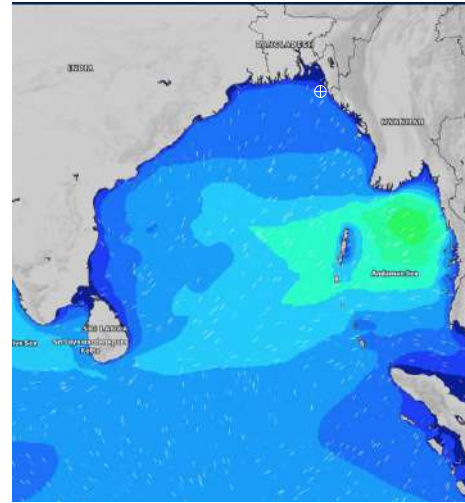
**24 June 24 Mon (Probability 98%)**



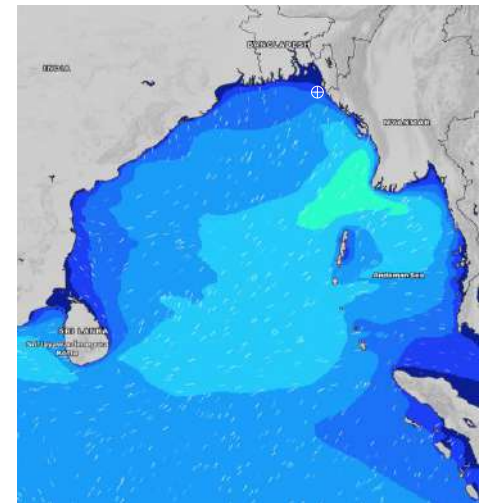
**25 June 24 Tue (Probability 95%)**



**26 June 24 Wed (Probability 90%)**



**27 June 24 Thu (Probability 80%)**

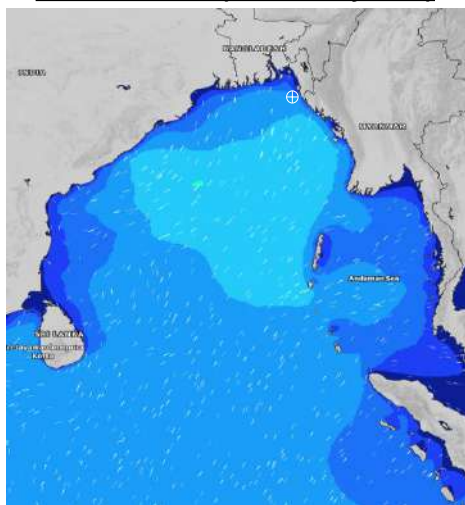


# MARINE WEATHER FORECAST- 20 NM WEST OF ELEPHANT POINT (Lat 21° 10' N, Long 091° 42' E)

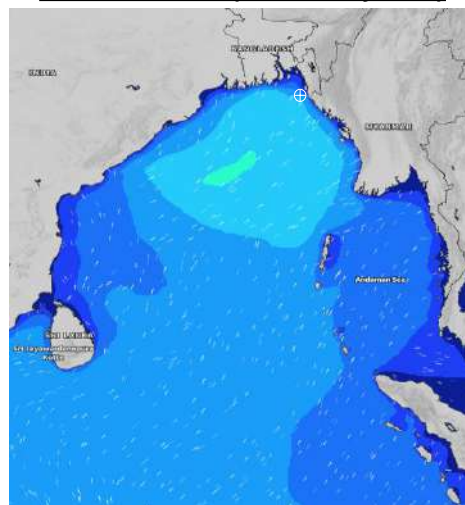
**DATE : 24 June to 01 July 2024**

Date	Time	Max Wind Spd (kts)	Wind Direction	Wave Ht (m)	Sea State	Baro Pressure	Air Temp		Sea Surface Temp	Humidity (%)	Prob of Rain (%)	Sea State	Wave Ht (m)
							Max	Min					
28-06-24	0001	25	SE	2.0	4	1002	30	26	28	90%	60% (0.6 mm)	0	0
	0600	20	SE	1.9	4	1002			28	92%	50% (0.4 mm)	1	0 - 0.1
	1200	21	SE	1.8	4	1003			28	83%	56% (0.4 mm)	2	0.1 - 0.5
	1800	19	SSE	1.8	4	1002			28	88%	36% (0.3 mm)	3	0.5 - 1.25
29-06-24	0001	22	S	1.9	4	1003	29	26	28	91%	45% (0.4 mm)	4	1.25 - 2.5
	0600	23	S	2.1	4	1002			28	92%	53% (0.5 mm)	5	2.5 - 4.0
	1200	23	SSE	2.1	4	1003			28	82%	56% (0.4 mm)	6	4.0 - 6.0
	1800	21	SSE	2.1	4	1002			28	87%	36% (0.3 mm)	7	6.0 - 9.0
30-06-24	0001	22	S	2.1	4	1003	28	26	28	91%	45% (0.4 mm)	8	9.0 - 14.0
	0600	20	S	2.0	4	1003			28	92%	53% (0.5 mm)	9	Over 14.0
	1200	22	SSE	2.1	4	1003			28	82%	56% (0.4 mm)		
	1800	19	SSE	2.0	4	1001			28	87%	36% (0.3 mm)		
01-07-24	0001	18	S	1.9	4	1003	28	26	28	91%	45% (0.4 mm)		
	0600	20	S	1.9	4	1002			28	92%	53% (0.5 mm)		
	1200	19	SSE	2.0	4	1003			28	82%	56% (0.4 mm)		
	1800	16	SSE	1.8	4	1001			28	87%	36% (0.3 mm)		

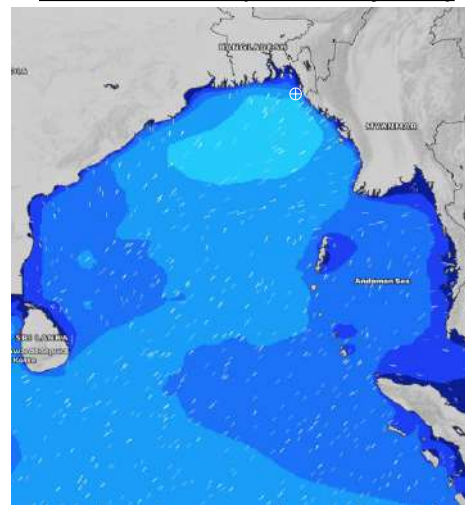
**28 June 24 Fri (Probability 70%)**



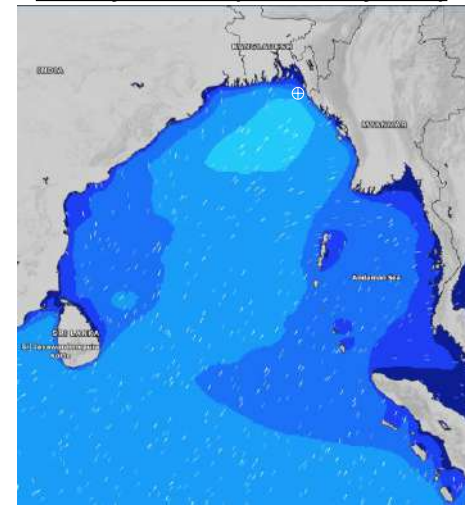
**29 June 24 Sat (Probability 60%)**



**30 June 24 Sun (Probability 50%)**



**01 July 24 Mon (Probability 50%)**



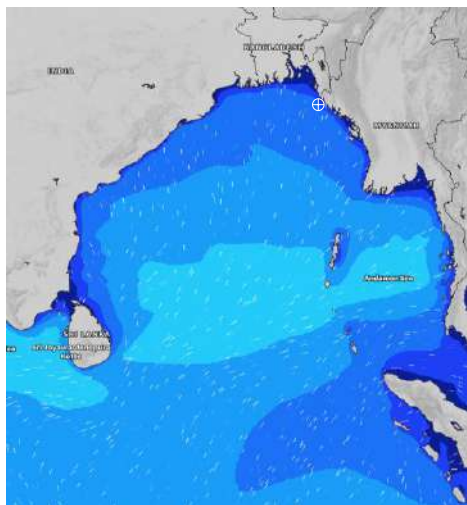
Significant wave height (m)

# MARINE WEATHER FORECAST- 15 NM WEST OF ST. MARTIN'S LIGHT HOUSE (Lat 20° 37'N, Long 092° 03'E)

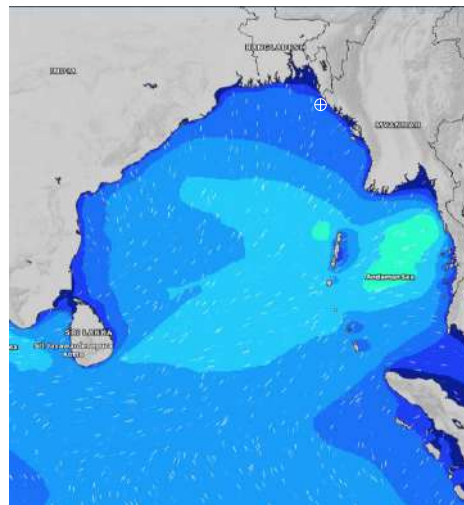
**DATE : 24 June to 01 July 2024**

Date	Time	Max Wind Spd (kts)	Wind Direction	Wave Ht (m)	Sea State	Baro Pressure	Air Temp		Sea Surface Temp	Humidity (%)	Prob of Rain(%)	Sea State	Wave Ht (m)
							Max	Min					
24-06-24	0001	9	SW	1.5	4	1003	30	26	29	89%	32% (0.2 mm)	0	0
	0600	5	SE	1.5	4	1002			29	92%	15% (0.0 mm)	1	0 - 0.1
	1200	8	SSE	1.4	4	1004			29	87%	17% (0.0 mm)	2	0.1 - 0.5
	1800	8	SW	1.4	4	1001			30	88%	24% (0.0 mm)	3	0.5 - 1.25
25-06-24	0001	9	SSW	1.4	4	1003	30	27	29	90%	61% (0.4 mm)	4	1.25 - 2.5
	0600	6	WSW	1.4	4	1001			28	93%	54% (0.4 mm)	5	2.5 - 4.0
	1200	4	S	1.4	4	1002			29	88%	51% (0.4 mm)	6	4.0 - 6.0
	1800	4	WNW	1.4	4	999			29	88%	24% (0.0 mm)	7	6.0 - 9.0
26-06-24	0001	6	S	1.4	4	1001	30	27	29	89%	40% (0.3 mm)	8	9.0 - 14.0
	0600	2	WNW	1.5	4	1000			29	92%	56% (0.4 mm)	9	Over 14.0
	1200	3	SE	1.6	4	1001			29	87%	48% (0.4 mm)		
	1800	4	WNW	1.6	4	999			30	88%	24% (0.0 mm)		
27-06-24	0001	5	NNE	1.5	4	1001	30	26	29	89%	40% (0.3 mm)		
	0600	12	ESE	1.4	4	1000			29	92%	56% (0.4 mm)		
	1200	23	SE	1.7	4	1002			29	87%	48% (0.4 mm)		
	1800	28	SE	2.6	5	1000			29	88%	24% (0.0 mm)		

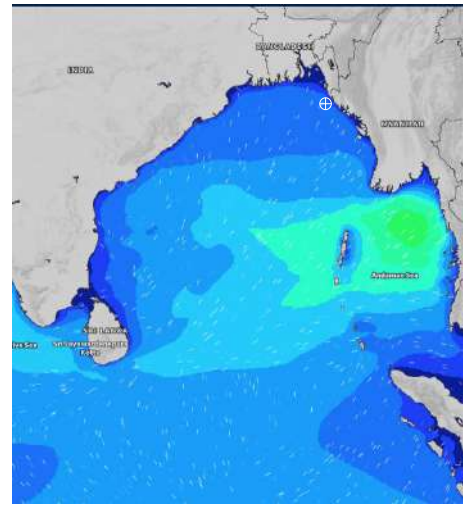
**24 June 24 Mon (Probability 98%)**



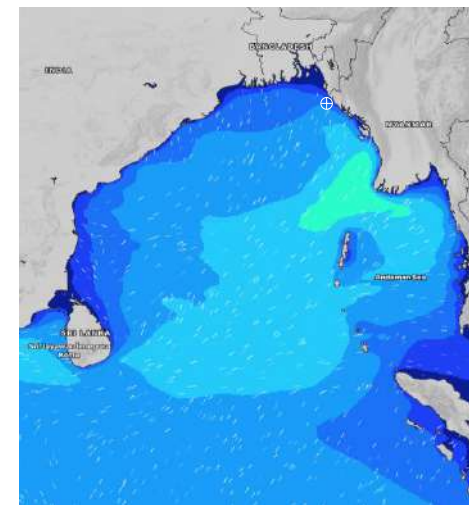
**25 June 24 Tue (Probability 95%)**



**26 June 24 Wed (Probability 90%)**



**27 June 24 Thu (Probability 80%)**



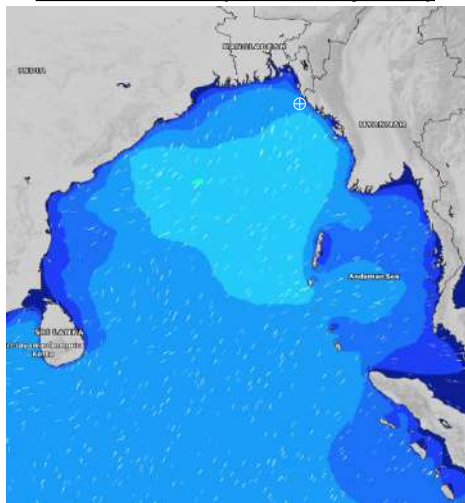
Significant wave height (m)

# MARINE WEATHER FORECAST- 15 NM WEST OF ST. MARTIN'S LIGHT HOUSE (Lat 20° 37'N, Long 092° 03'E)

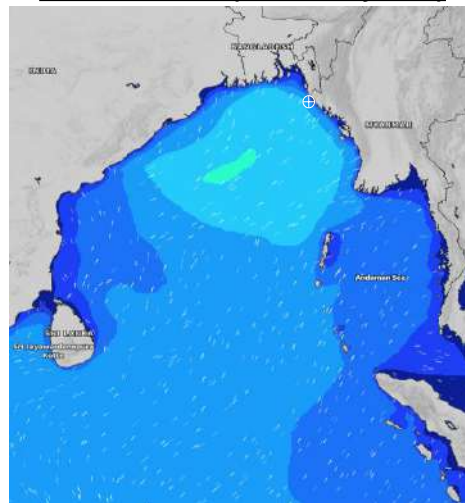
**DATE : 24 June to 01 July 2024**

Date	Time	Max Wind Spd (kts)	Wind Direction	Wave Ht (m)	Sea State	Baro Pressure	Air Temp		Sea Surface Temp	Humidity (%)	Prob of Rain (%)	Sea State	Wave Ht (m)
							Max	Min					
28-06-24	0001	19	S	2.2	4	1003	29	27	28	90%	66% (0.8 mm)	0	0
	0600	18	SSE	2.3	4	1002			28	90%	70% (1.2 mm)	1	0 - 0.1
	1200	18	SSE	2.3	4	1004			28	87%	55% (0.7 mm)	2	0.1 - 0.5
	1800	18	S	2.3	4	1002			28	88%	60% (0.9 mm)	3	0.5 - 1.25
29-06-24	0001	18	S	2.3	4	1004	29	27	28	92%	69% (0.8 mm)	4	1.25 - 2.5
	0600	21	S	2.4	4	1002			28	93%	71% (0.7 mm)	5	2.5 - 4.0
	1200	21	S	2.4	4	1004			28	83%	45% (0.4 mm)	6	4.0 - 6.0
	1800	19	S	2.5	4	1002			29	89%	32% (0.2 mm)	7	6.0 - 9.0
30-06-24	0001	19	S	2.5	4	1004	28	27	28	92%	69% (0.8 mm)	8	9.0 - 14.0
	0600	20	S	2.5	4	1002			28	94%	71% (0.7 mm)	9	Over 14.0
	1200	20	S	2.5	4	1004			28	84%	45% (0.4 mm)		
	1800	20	S	2.4	4	1002			28	89%	32% (0.2 mm)		
01-07-24	0001	20	S	2.4	4	1004	28	26	28	92%	69% (0.8 mm)		
	0600	21	S	2.3	4	1002			28	94%	71% (0.7 mm)		
	1200	21	S	2.4	4	1004			28	84%	45% (0.4 mm)		
	1800	19	S	2.3	4	1002			28	89%	32% (0.2 mm)		

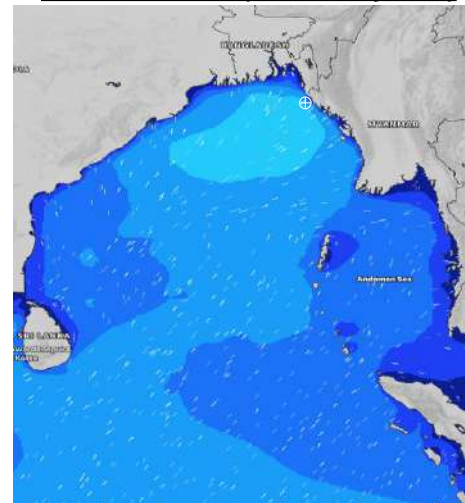
**28 June 24 Fri (Probability 70%)**



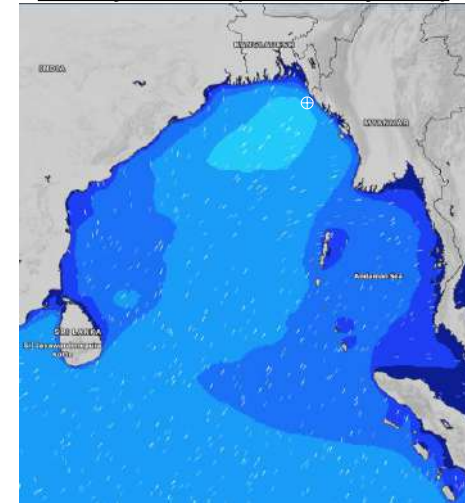
**29 June 24 Sat (Probability 60%)**



**30 June 24 Sun (Probability 50%)**



**01 July 24 Mon (Probability 50%)**



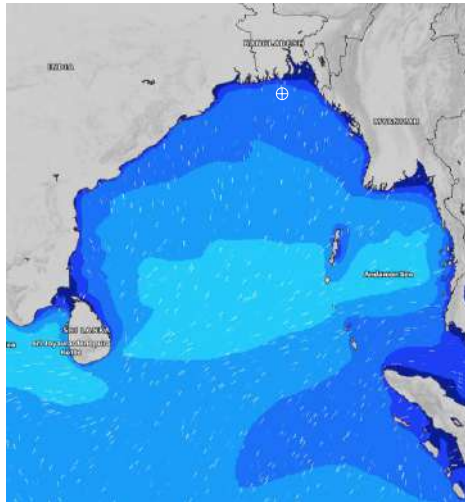
Significant wave height (m)

# MARINE WEATHER FORECAST- 40 NM ESE OF PAYRA FAIRWAY (Lat 21° 07' N, Long 090° 45' E)

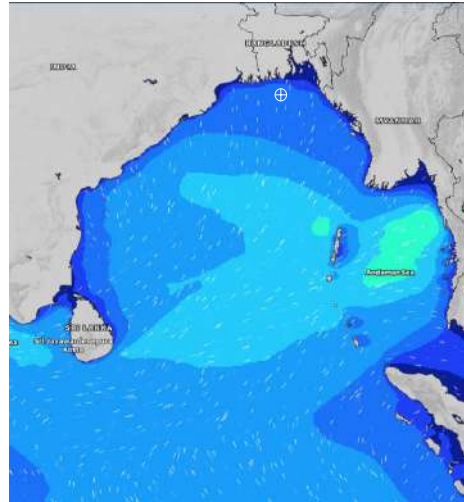
**DATE : 24 June to 01 July 2024**

Date	Time	Max Wind Spd (kts)	Wind Direction	Wave Ht (m)	Sea State	Baro Pressure	Air Temp		Sea Surface Temp	Humidity (%)	Prob of Rain (%)	Sea State	Wave Ht (m)
							Max	Min					
24-06-24	0001	10	SW	1.5	4	1003	31	28	30	87%	24% (0.0 mm)	0	0
	0600	8	SSW	1.5	4	1002			29	84%	16% (0.0 mm)	1	0 - 0.1
	1200	10	S	1.5	4	1003			30	81%	48% (0.4 mm)	2	0.1 - 0.5
	1800	9	SW	1.5	4	1000			30	84%	12% (0.0 mm)	3	0.5 - 1.25
25-06-24	0001	11	SSW	1.5	4	1002	31	28	30	87%	18% (0.0 mm)	4	1.25 - 2.5
	0600	8	SSW	1.5	4	1001			29	89%	34% (0.2 mm)	5	2.5 - 4.0
	1200	7	SW	1.4	4	1002			30	82%	32% (0.2 mm)	6	4.0 - 6.0
	1800	9	S	1.4	4	1000			30	82%	12% (0.0 mm)	7	6.0 - 9.0
26-06-24	0001	7	SSW	1.4	4	1001	31	28	30	87%	18% (0.0 mm)	8	9.0 - 14.0
	0600	5	S	1.6	4	1000			29	89%	41% (0.4 mm)	9	Over 14.0
	1200	3	SSE	1.7	4	1000			30	83%	48% (0.4 mm)		
	1800	4	NW	1.6	4	999			30	85%	12% (0.0 mm)		
27-06-24	0001	5	SSE	1.4	4	1000	30	28	30	87%	18% (0.0 mm)		
	0600	4	ENE	1.4	4	1000			29	89%	41% (0.4 mm)		
	1200	20	ESE	1.5	4	1001			30	83%	48% (0.4 mm)		
	1800	21	ESE	2.0	4	999			29	86%	12% (0.0 mm)		

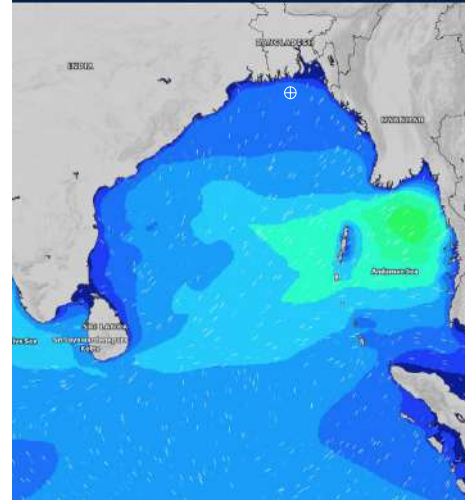
**24 June 24 Mon (Probability 98%)**



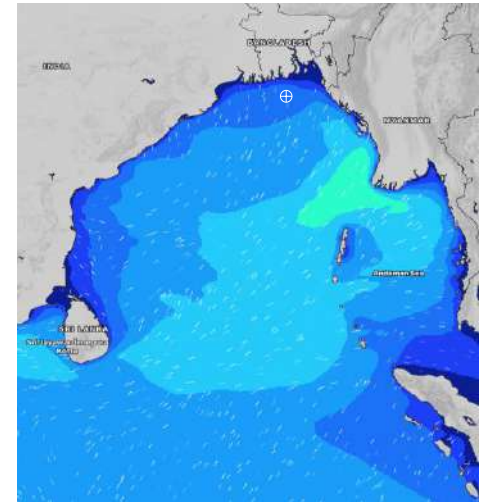
**25 June 24 Tue (Probability 95%)**



**26 June 24 Wed (Probability 90%)**



**27 June 24 Thu (Probability 80%)**



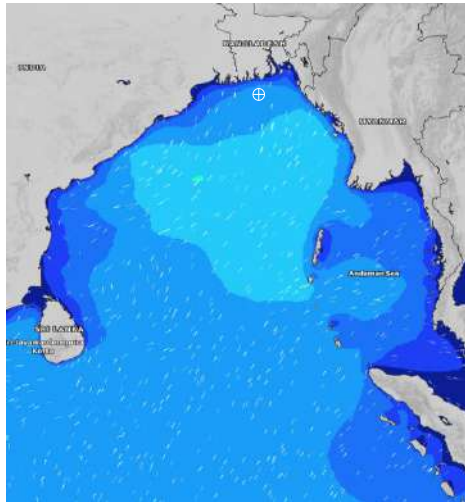
Significant wave height (m)

# MARINE WEATHER FORECAST- 40 NM ESE OF PAYRA FAIRWAY (Lat 21° 07' N, Long 090° 45' E)

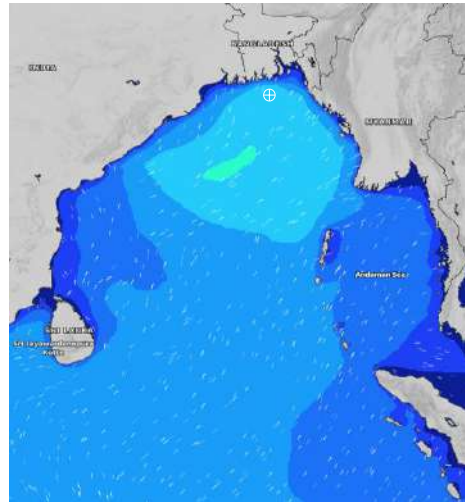
**DATE : 24 June to 01 July 2024**

Date	Time	Max Wind Spd (kts)	Wind Direction	Wave Ht (m)	Sea Stae	Baro Pressure	Air Temp		Sea Surface Temp	Humidity (%)	Prob of Rain (%)	Sea State	Wave Ht (m)
							Max	Min					
28-06-24	0001	17	SSE	2.1	4	1001	30	28	29	87%	49% (0.3 mm)	0	0
	0600	14	SSE	2.0	4	1002			29	90%	71% (0.7 mm)	1	0 - 0.1
	1200	20	SSE	2.2	4	1002			29	85%	43% (0.4 mm)	2	0.1 - 0.5
	1800	19	S	2.2	4	1001			29	87%	24% (0.1 mm)	3	0.5 - 1.25
29-06-24	0001	25	SSW	2.4	4	1002	30	27	29	87%	66% (0.6 mm)	4	1.25 - 2.5
	0600	25	SSW	2.7	5	1001			28	90%	75% (0.8 mm)	5	2.5 - 4.0
	1200	25	S	2.9	5	1002			29	84%	43% (0.4 mm)	6	4.0 - 6.0
	1800	23	S	2.8	5	1001			29	86%	24% (0.1 mm)	7	6.0 - 9.0
30-06-24	0001	22	SSW	2.6	5	1002	29	27	28	87%	34% (0.2 mm)	8	9.0 - 14.0
	0600	19	SSW	2.6	5	1001			29	90%	44% (0.4 mm)	9	Over 14.0
	1200	20	S	2.6	5	1002			29	84%	43% (0.4 mm)		
	1800	19	S	2.5	4	1000			29	86%	24% (0.1 mm)		
01-07-24	0001	22	SSW	2.4	4	1002	29	27	28	87%	34% (0.2 mm)		
	0600	22	SSW	2.4	4	1001			29	90%	44% (0.4 mm)		
	1200	21	S	2.4	4	1002			29	84%	43% (0.4 mm)		
	1800	18	S	2.3	4	1000			29	86%	24% (0.1 mm)		

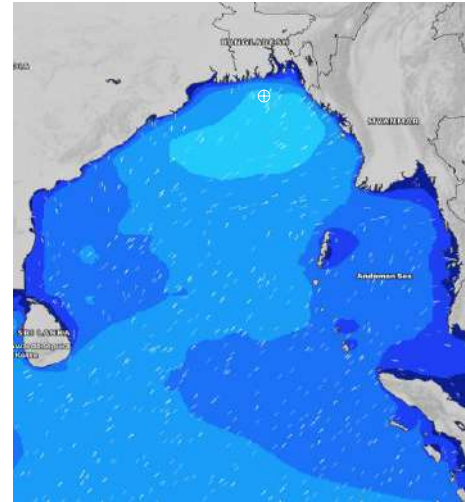
**28 June 24 Fri (Probability 70%)**



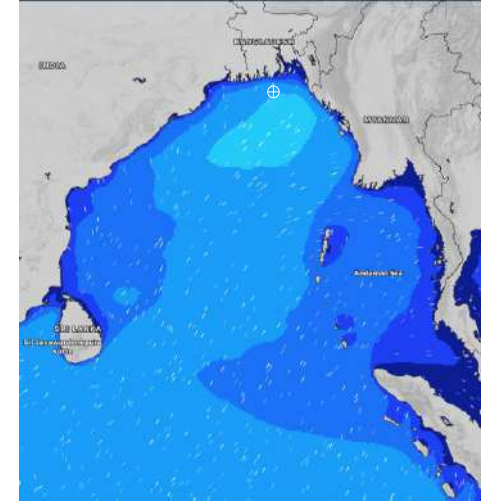
**29 June 24 Sat (Probability 60%)**



**30 June 24 Sun (Probability 50%)**



**01 July 24 Mon (Probability 50%)**



Significant wave height (m)

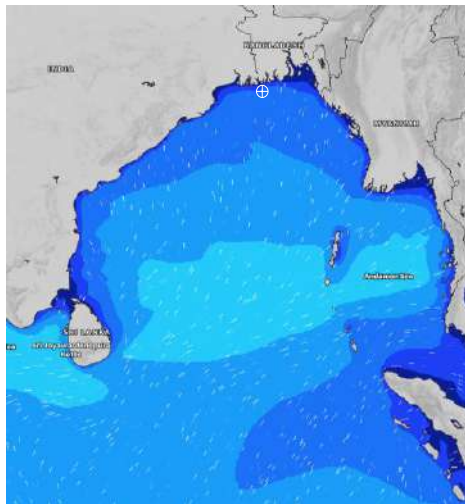


# MARINE WEATHER FORECAST- 10 NM SOUTH OF MONGLA FAIRWAY (Lat 21° 16' N, Long 089° 34' E)

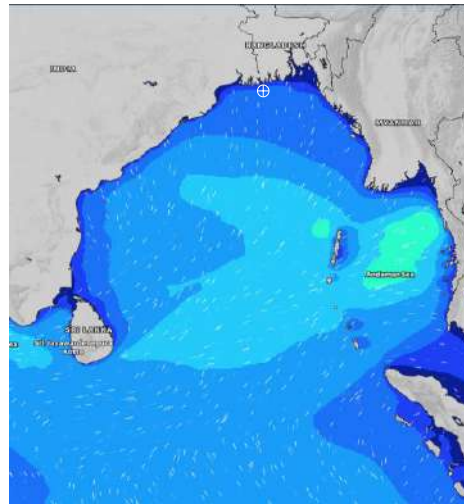
**DATE : 24 June to 01 July 2024**

Date	Time	Max Wind Spd (kts)	Wind Direction	Wave Ht (m)	Sea State	Baro Pressure	Air Temp		Sea Surface Temp	Humidity (%)	Prob of Rain (%)	Sea State	Wave Ht (m)
							Max	Min					
24-06-24	0001	12	SSW	1.5	4	1002	32	28	30	90%	22% (0.0 mm)	0	0
	0600	9	SW	1.5	4	1002			30	87%	16% (0.0 mm)	1	0 - 0.1
	1200	10	SW	1.4	4	1002			30	76%	88% (0.8 mm)	2	0.1 - 0.5
	1800	12	SSW	1.5	4	1000			30	82%	18% (0.0 mm)	3	0.5 - 1.25
25-06-24	0001	15	SSW	1.5	4	1001	33	28	30	89%	14% (0.0 mm)	4	1.25 - 2.5
	0600	12	SSW	1.6	4	1001			30	91%	22% (0.0 mm)	5	2.5 - 4.0
	1200	8	SW	1.5	4	1001			30	74%	49% (0.4 mm)	6	4.0 - 6.0
	1800	9	S	1.5	4	999			30	81%	10% (0.0 mm)	7	6.0 - 9.0
26-06-24	0001	11	SSW	1.5	4	1001	32	28	30	90%	16% (0.0 mm)	8	9.0 - 14.0
	0600	9	SSW	1.6	4	999			30	91%	24% (0.1 mm)	9	Over 14.0
	1200	6	SSE	1.7	4	1000			30	74%	48% (0.4 mm)		
	1800	4	SSE	1.5	4	999			30	81%	22% (0.0 mm)		
27-06-24	0001	7	S	1.4	4	1001	31	27	30	90%	16% (0.0 mm)		
	0600	4	S	1.3	4	1000			30	91%	24% (0.1 mm)		
	1200	8	ESE	1.4	4	1001			30	76%	48% (0.4 mm)		
	1800	12	ESE	1.6	4	1000			30	81%	22% (0.0 mm)		

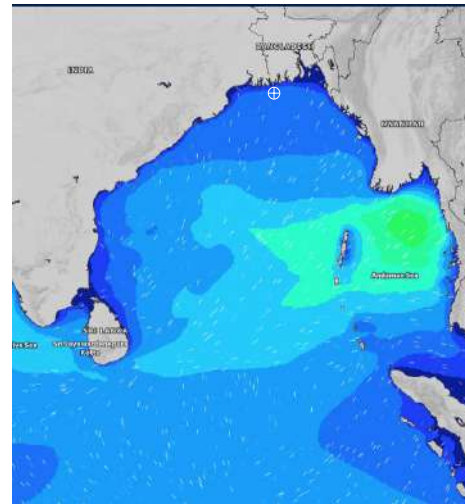
**24 June 24 Mon (Probability 98%)**



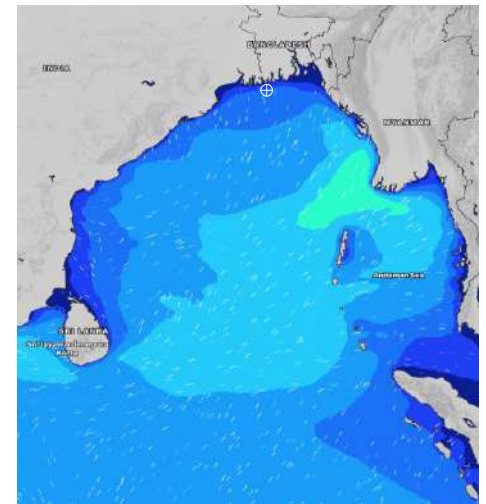
**25 June 24 Tue (Probability 95%)**



**26 June 24 Wed (Probability 90%)**



**27 June 24 Thu (Probability 80%)**



Significant wave height (m)

# MARINE WEATHER FORECAST- 10 NM SOUTH OF MONGLA FAIRWAY (Lat 21° 16' N, Long 089° 34' E)

**DATE : 24 June to 01 July 2024**

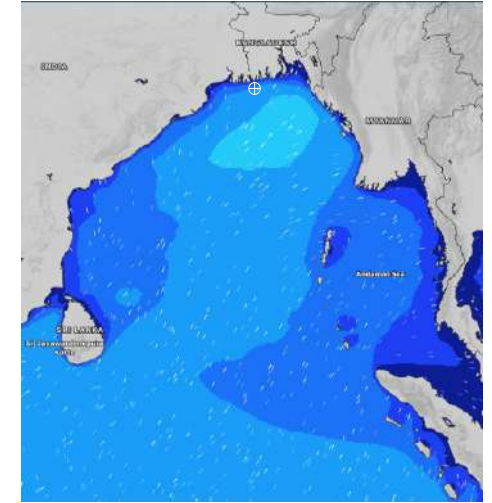
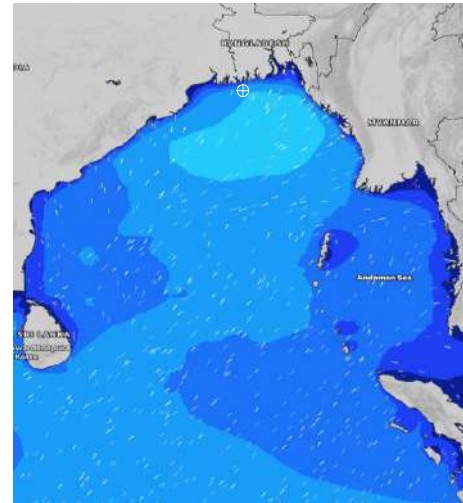
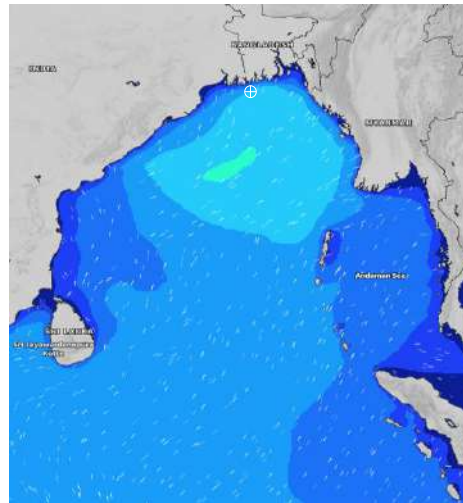
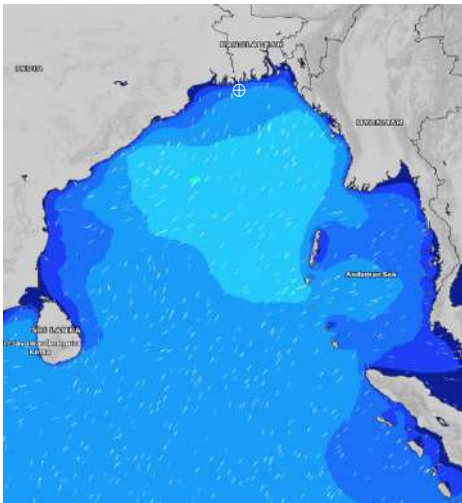
Date	Time	Max Wind Spd (kts)	Wind Direction	Wave Ht (m)	Sea State	Baro Pressure	Air Temp		Sea Surface Temp	Humidity (%)	Prob of Rain (%)	Sea State	Wave Ht (m)
							Max	Min					
28-06-24	0001	8	SSE	1.6	4	1000	31	27	29	90%	56% (0.5 mm)	0	0
	0600	18	SE	1.9	4	1000			29	91%	62% (0.5 mm)	1	0 - 0.1
	1200	17	SSE	1.9	4	1000			29	80%	46% (0.4 mm)	2	0.1 - 0.5
	1800	20	S	2.1	4	999			29	87%	37% (0.2 mm)	3	0.5 - 1.25
29-06-24	0001	23	SSW	2.3	4	1001	31	27	29	90%	56% (0.5 mm)	4	1.25 - 2.5
	0600	22	SSW	2.7	5	1000			29	91%	62% (0.5 mm)	5	2.5 - 4.0
	1200	21	S	2.7	5	1000			29	80%	46% (0.4 mm)	6	4.0 - 6.0
	1800	20	S	2.6	5	999			29	86%	37% (0.2 mm)	7	6.0 - 9.0
30-06-24	0001	20	SSW	2.4	4	1000	29	27	29	90%	68% (0.6 mm)	8	9.0 - 14.0
	0600	19	SSW	2.5	4	1000			29	91%	66% (0.6 mm)	9	Over 14.0
	1200	17	S	2.4	4	1001			27	81%	63% (0.5 mm)		
	1800	17	S	2.2	4	1000			29	86%	61% (0.7 mm)		
01-07-24	0001	21	SSW	2.2	4	1001	30	27	29	90%	68% (0.6 mm)		
	0600	18	SSW	2.2	4	1000			29	91%	66% (0.6 mm)		
	1200	15	S	2.1	4	1001			27	81%	63% (0.5 mm)		
	1800	18	S	2.1	4	1000			29	86%	61% (0.7 mm)		

**28 June 24 Fri (Probability 70%)**

**29 June 24 Sat (Probability 60%)**

**30 June 24 Sun (Probability 50%)**

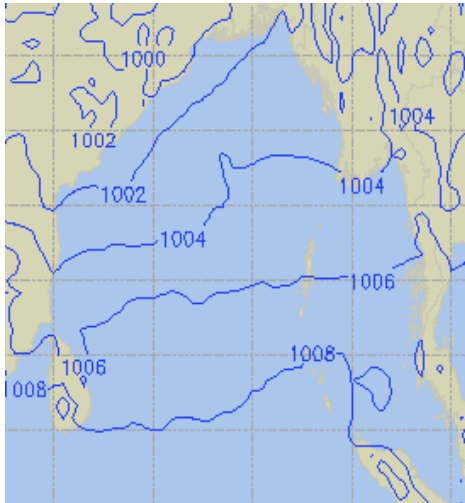
**01 July 24 Mon (Probability 50%)**



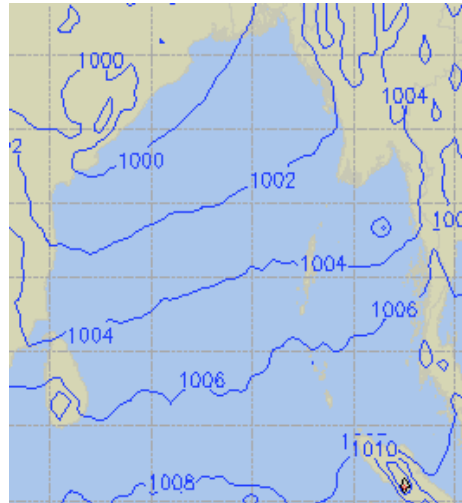
Significant wave height (m)

## PREDICTED SURFACE PRESSURE FORECAST (24 to 30 June 2024)

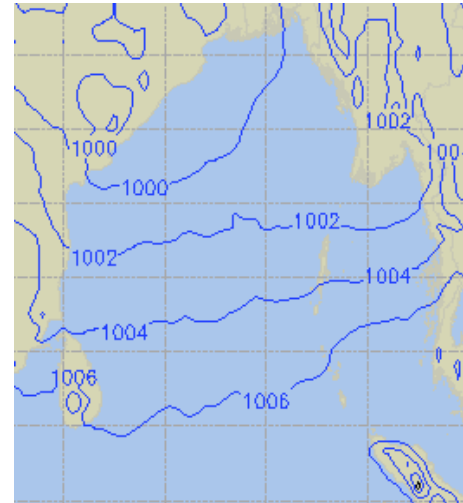
**24 June 24 Mon (Probability 98%)**



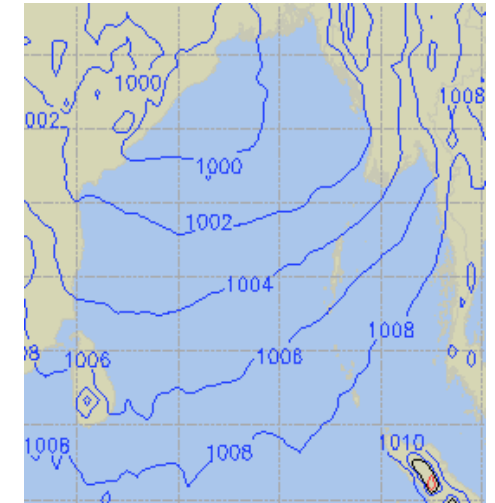
**25 June 24 Tue (Probability 95%)**



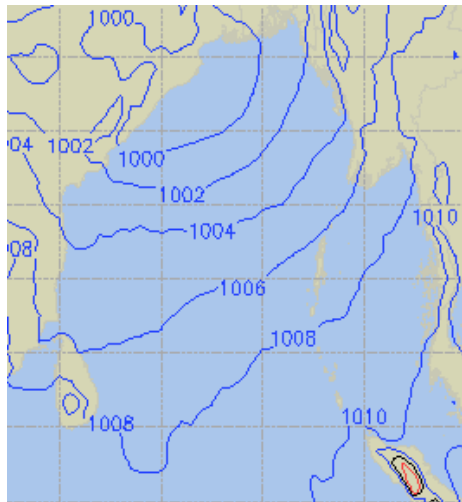
**26 June 24 Wed (Probability 90%)**



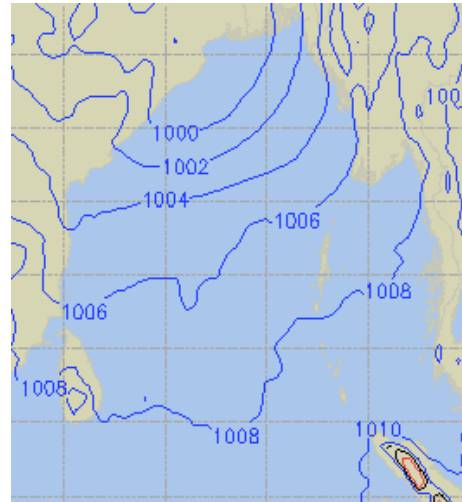
**27 June 24 Thu (Probability 80%)**



**28 June 24 Fri (Probability 70%)**



**29 June 24 Sat (Probability 60%)**



**30 June 24 Sun (Probability 50%)**

