



SUMMARY OF MARINE WEATHER FORECAST
COASTAL AREA OF BANGLADESH
DATE: 24 April to 01 May 2026



Fleet Forecast	The trough of low lies over North Bay of Bengal.
Wind Direction, Speed	South-West/Southerly 10-15 kts, temporary gusting to 25 kts.
Wave Height & Sea State	Ctg Outer Anchorage: 0.2 to 0.9 m (Sea state: 2 to 3) Abeam to Cox's Bazar: 0.9 to 1.8 m (Sea state: 3 to 4) St. Martin's Island: 0.9 to 1.7 m (Sea state 3 to 4) Payra Fairway Buoy: 1.1 to 2.3 m (Sea state: 3 to 4) Mongla Fairway Buoy: 1.1 to 2.5 m (Sea state: 3 to 5) Outer EEZ: 1.6 to 2.1 m (Sea state: 3 to 4)
Sea Surface Temperature	27° C - 30° C
Baro Pressure	1006-1010 mb
Rainfall	Partly cloudy to cloudy sky rain/thunder showers with gusty wind is likely to occur over Bay of Bengal and adjoining area.
Fog & Visibility	Hazy condition over the Bay of Bengal & coastal area, Visibility 1.5 – 5.0 km

Marine Weather Outlook (24 April to 01 May 2026):

- Partly cloudy to cloudy sky rain/thunder showers with gusty wind is likely to occur over Bay of Bengal and adjoining area.
- Hazy condition over the Bay of Bengal & coastal area during early morning.
- Rain/thunder showers activity may increase.

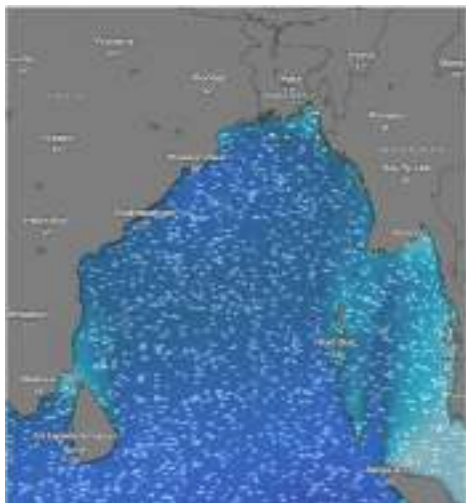


MARINE WEATHER FORECAST (24 April to 01 May 2026) PATENGA POINT (22° 12' N, 091° 38' E)

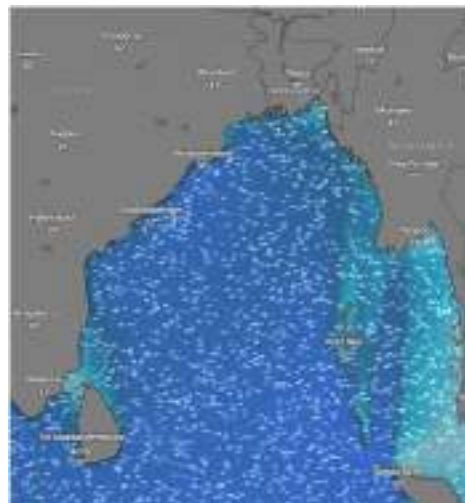


Date	Time	Air Temp (°C)		Sea Surface Temp (°C)	Baro Pressure (mbar)	Wind Direction	Wind Spd (kts)		Wave Ht (m)	Sea State	Humidity (%)	Prob of Rain (%)	Amount of Rain (mm)
		Max	Min				Gusting	Avg					
24-04-26 (Friday)	0001	33	27	28	1009	S	10	06	0.2	2	89	08	0.0
	0600			27	1010	SSE	09	05	0.2	2	91	11	0.0
	1200			30	1008	SSW	13	09	0.3	2	72	06	0.0
	1800			29	1007	SW	10	06	0.3	2	81	09	0.0
25-04-26 (Saturday)	0001	33	27	28	1009	SW	11	06	0.2	2	87	08	0.0
	0600			27	1010	SE	09	05	0.2	2	89	10	0.0
	1200			30	1008	SSW	13	09	0.2	2	72	07	0.0
	1800			28	1007	SW	11	07	0.4	2	83	08	0.0
26-04-26 (Sunday)	0001	33	27	28	1009	SSW	10	06	0.3	2	89	09	0.0
	0600			27	1010	SSE	14	10	0.5	3	90	12	0.0
	1200			30	1008	SSW	17	13	0.6	3	73	08	0.0
	1800			28	1007	SSW	20	15	0.7	3	85	15	0.0
27-04-26 (Monday)	0001	32	26	28	1007	S	15	11	0.6	3	88	09	0.0
	0600			27	1008	SSE	17	13	0.7	3	89	12	0.0
	1200			30	1007	SSW	26	18	0.9	3	74	08	0.0
	1800			28	1006	SSW	25	17	0.9	3	86	15	0.0

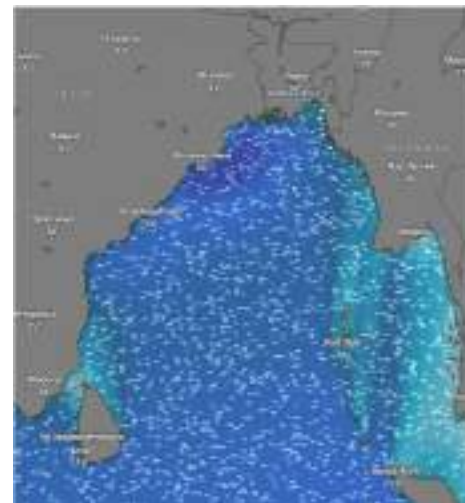
24 Apr 2026



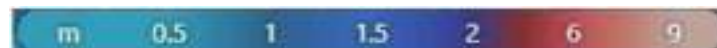
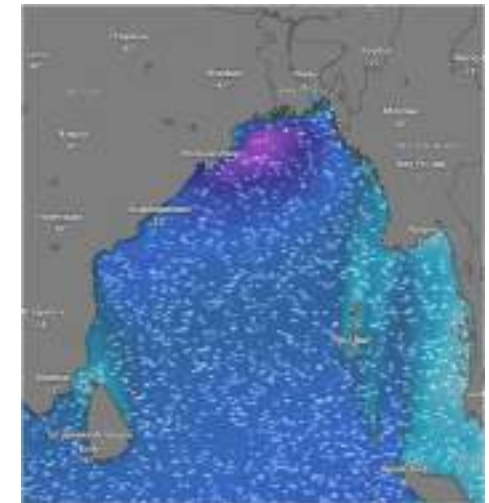
25 Apr 2026



26 Apr 2026



27 Apr 2026



Significant wave height (m)



MARINE WEATHER FORECAST (24 April to 01 May 2026)

PATENGA POINT (22° 12' N, 091° 38' E)



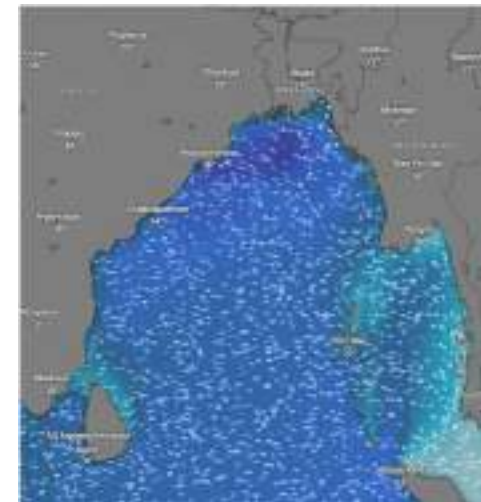
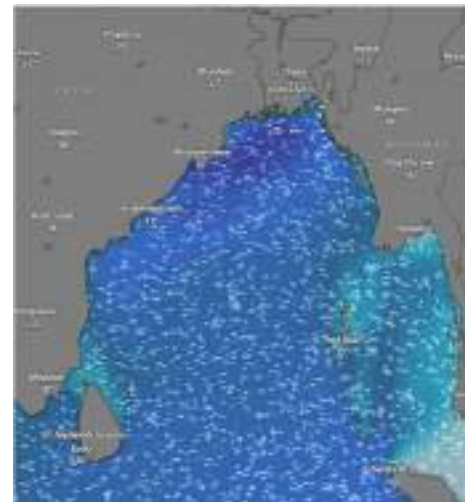
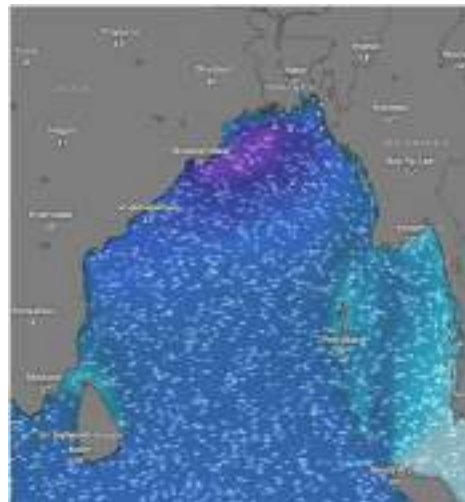
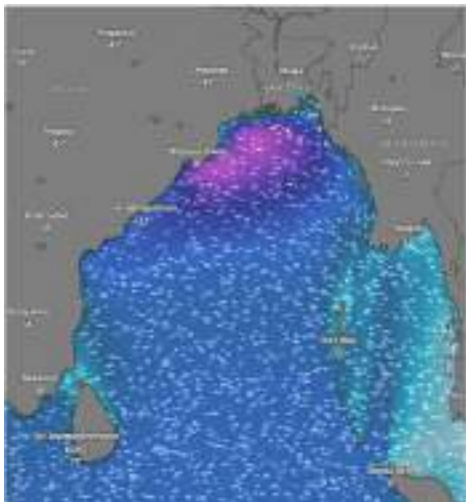
Date	Time	Air Temp (°C)		Sea Surface Temp (°C)	Baro Pressure (mbar)	Wind Direction	Wind Spd (kts)		Wave Ht (m)	Sea State	Humidity (%)	Prob of Rain (%)	Amount of Rain (mm)
		Max	Min				Gusting	Avg					
28-04-26 (Tuesday)	0001	32	25	28	1007	SSW	18	14	0.8	3	89	09	0.0
	0600			27	1008	S	14	10	0.8	3	90	12	0.0
	1200			30	1006	SSW	21	15	0.8	3	75	08	0.0
	1800			28	1005	SSW	17	12	0.7	3	87	15	0.0
29-04-26 (Wednesday)	0001	32	25	28	1008	S	21	15	0.8	3	89	08	0.0
	0600			27	1009	S	20	14	0.8	3	91	12	0.0
	1200			30	1007	SSW	26	19	0.6	3	76	05	0.0
	1800			28	1006	S	22	15	0.7	3	87	11	0.0
30-04-26 (Thursday)	0001	32	26	28	1007	S	18	13	0.8	3	88	09	0.0
	0600			27	1008	S	15	09	0.8	3	91	12	0.0
	1200			30	1006	SSW	18	12	0.9	3	78	07	0.0
	1800			28	1005	S	20	13	0.9	3	85	11	0.0
01-05-26 (Friday)	0001	32	26	28	1007	SSE	17	13	0.6	3	89	10	0.0
	0600			27	1008	SSE	16	12	0.7	3	91	15	0.0
	1200			30	1006	SSW	25	17	0.5	3	76	09	0.0
	1800			28	1005	SE	17	13	0.5	3	87	13	0.0

28 Apr 2026

29 Apr 2026

30 Apr 2026

01 May 2026



Significant wave height (m)



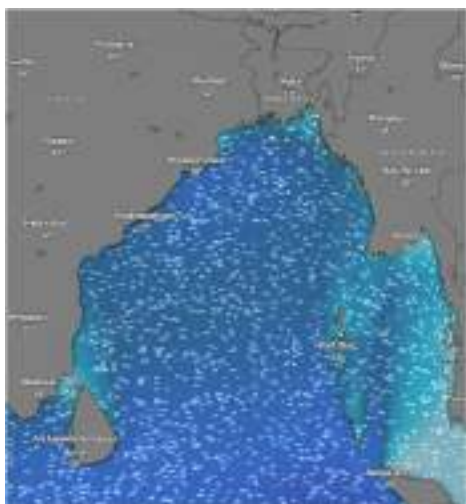
MARINE WEATHER FORECAST (24 April to 01 May 2026)

ABEAM TO KUTUBDIA (21° 51' N, 091° 40' E)

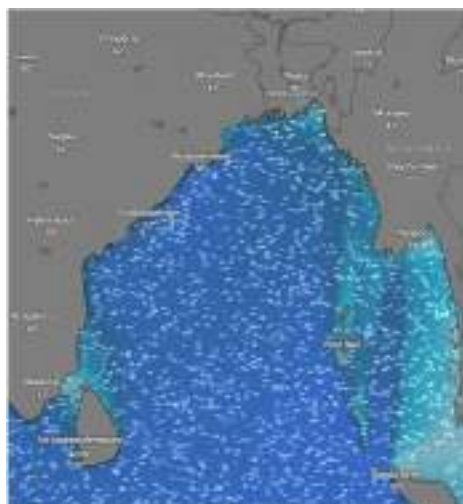


Date	Time	Air Temp (°C)		Sea Surface Temp (°C)	Baro Pressure (mbar)	Wind Direction	Wind Spd (kts)		Wave Ht (m)	Sea State	Humidity (%)	Prob of Rain (%)	Amount of Rain (mm)
		Max	Min				Gusting	Avg					
24-04-26 (Friday)	0001	33	27	28	1009	SSW	10	05	0.4	2	89	08	0.0
	0600			27	1010	SSE	11	06	0.4	2	90	11	0.0
	1200			30	1008	SW	12	08	0.4	2	75	12	0.0
	1800			29	1007	SW	11	07	0.4	2	87	10	0.0
25-04-26 (Saturday)	0001	33	27	28	1009	SW	12	07	0.4	2	87	10	0.0
	0600			27	1010	SSW	10	06	0.4	2	89	15	0.0
	1200			30	1008	SSW	11	07	0.4	2	73	09	0.0
	1800			28	1007	SW	09	05	0.4	2	85	13	0.0
26-04-26 (Sunday)	0001	33	27	28	1009	SW	10	05	0.5	3	89	10	0.0
	0600			27	1010	S	13	08	0.5	3	90	15	0.0
	1200			30	1008	SSW	15	10	0.6	3	76	09	0.0
	1800			28	1007	SSW	14	10	0.8	3	85	13	0.0
27-04-26 (Monday)	0001	32	26	28	1007	S	24	16	0.7	3	87	10	0.0
	0600			27	1008	S	26	18	0.8	3	89	15	0.0
	1200			30	1007	SSW	27	20	1.0	3	75	09	0.0
	1800			28	1006	SSW	28	21	1.1	3	81	13	0.0

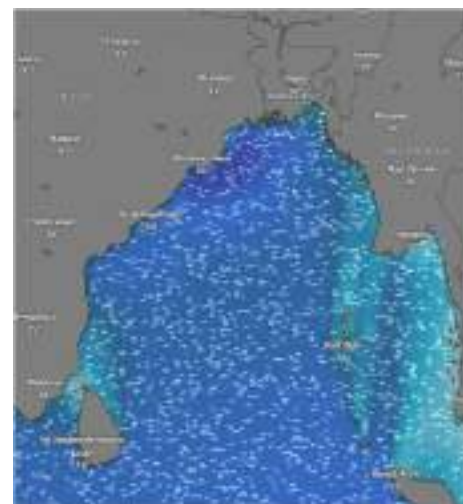
24 Apr 2026



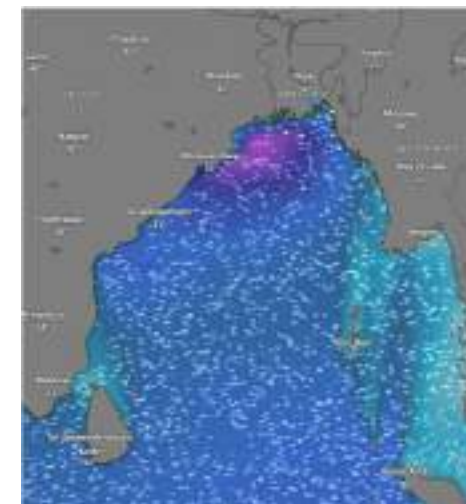
25 Apr 2026



26 Apr 2026



27 Apr 2026



Significant wave height (m)



MARINE WEATHER FORECAST (24 April to 01 May 2026)

ABEAM TO KUTUBDIA (21° 51' N, 091° 40' E)



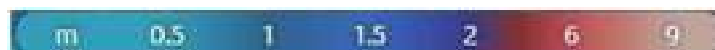
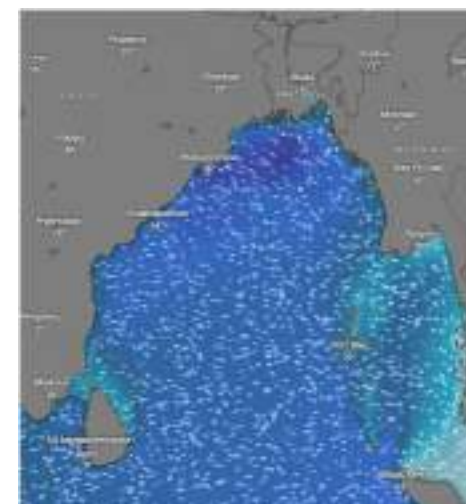
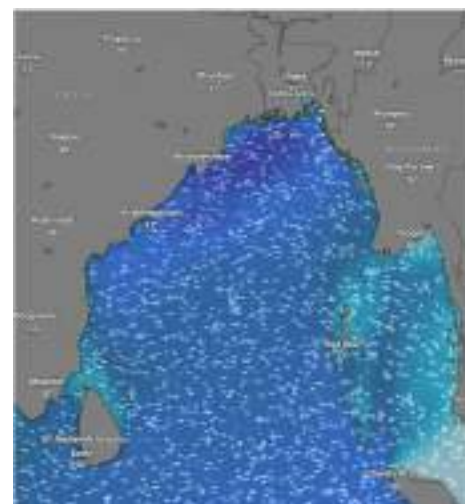
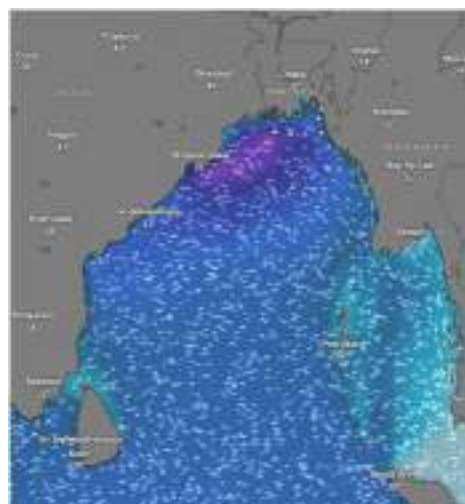
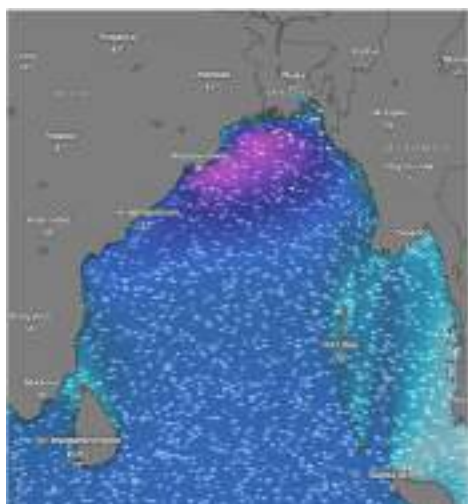
Date	Time	Air Temp (°C)		Sea Surface Temp (°C)	Baro Pressure (mbar)	Wind Direction	Wind Spd (kts)		Wave Ht (m)	Sea State	Humidity (%)	Prob of Rain (%)	Amount of Rain (mm)
		Max	Min				Gusting	Avg					
27-04-26 (Monday)	0001	32	25	28	1007	SW	17	13	0.6	3	87	10	0.0
	0600			27	1008	S	16	12	0.7	3	89	15	0.0
	1200			30	1006	SSW	18	14	0.7	3	75	09	0.0
	1800			28	1005	SSW	17	12	1.0	3	81	13	0.0
28-04-26 (Tuesday)	0001	32	25	28	1008	SSW	21	15	1.0	3	88	10	0.0
	0600			27	1009	S	20	14	1.0	3	90	15	0.0
	1200			30	1007	SSW	21	15	1.1	3	74	09	0.0
	1800			28	1006	SSW	20	14	1.0	3	86	13	0.0
29-04-26 (Wednesday)	0001	32	26	28	1007	SSW	22	16	1.0	3	89	09	0.0
	0600			27	1008	SSW	26	18	1.0	3	91	14	0.0
	1200			30	1006	SSW	27	19	0.9	3	75	06	0.0
	1800			28	1005	SSW	16	10	0.9	3	87	12	0.0
01-05-26 (Friday)	0001	32	26	28	1007	S	25	17	0.7	3	89	11	0.0
	0600			27	1008	S	20	14	0.9	3	91	16	0.0
	1200			30	1006	SSW	25	17	0.7	3	74	08	0.0
	1800			28	1005	W	17	13	0.8	3	88	17	0.0

28 Apr 2026

29 Apr 2026

30 Apr 2026

01 May 2026



Significant wave height (m)



MARINE WEATHER FORECAST (24 April to 01 May 2026)

ABEAM TO ELEPHANT POINT (21° 11' N, 091° 52' E)



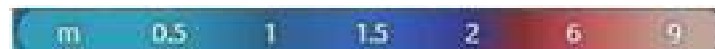
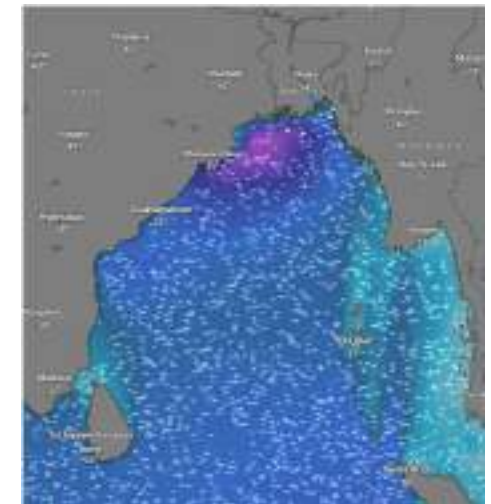
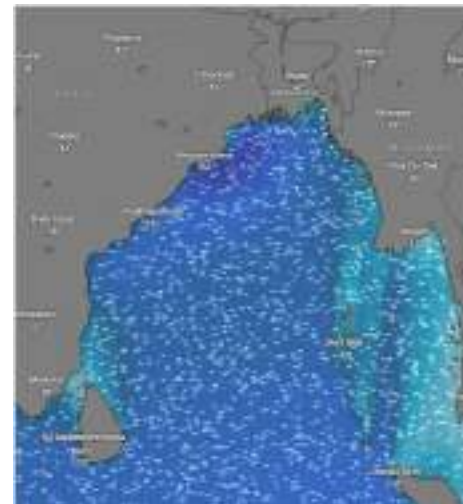
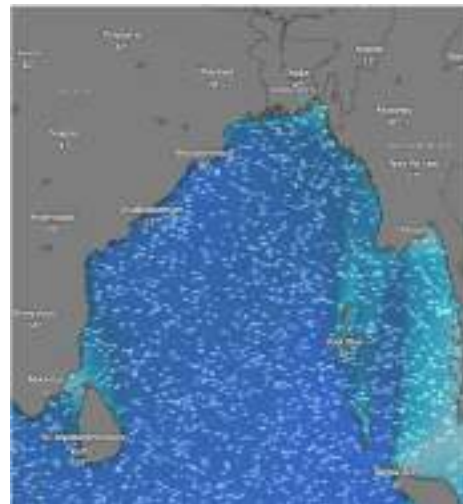
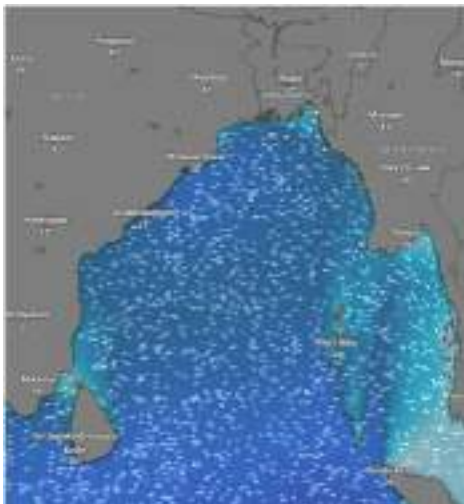
Date	Time	Air Temp (°C)		Sea Surface Temp (°C)	Baro Pressure (mbar)	Wind Direction	Wind Spd (kts)		Wave Ht (m)	Sea State	Humidity (%)	Prob of Rain (%)	Amount of Rain (mm)
		Max	Min				Gusting	Avg					
24-04-26 (Friday)	0001	33	27	28	1009	SSW	12	08	1.0	3	89	06	0.0
	0600			27	1010	SW	09	05	0.9	3	90	07	0.0
	1200			30	1008	SSW	12	08	0.9	3	75	12	0.0
	1800			29	1007	SSW	13	08	1.0	3	86	10	0.0
25-04-26 (Saturday)	0001	33	27	28	1009	SW	14	09	1.0	3	88	09	0.0
	0600			27	1010	SSW	14	10	0.9	3	90	13	0.0
	1200			30	1008	SSW	16	12	1.0	3	73	06	0.0
	1800			28	1007	SW	16	12	1.0	3	86	15	0.0
26-04-26 (Sunday)	0001	33	27	28	1009	SSE	14	11	1.0	3	89	08	0.0
	0600			27	1010	SSE	14	10	1.0	3	90	09	0.0
	1200			30	1008	SE	12	11	1.2	3	72	07	0.0
	1800			28	1007	SE	15	12	1.2	3	83	06	0.0
27-04-26 (Monday)	0001	32	26	28	1007	S	17	13	1.3	4	89	10	0.0
	0600			27	1008	S	20	14	1.4	4	90	12	0.0
	1200			30	1007	SSW	21	15	1.6	4	76	09	0.0
	1800			28	1006	SSW	22	16	1.7	4	88	15	0.0

24 Apr 2026

25 Apr 2026

26 Apr 2026

27 Apr 2026



Significant wave height (m)



MARINE WEATHER FORECAST (24 April to 01 May 2026)

ABEAM TO ELEPHANT POINT (21° 11' N, 091° 52' E)



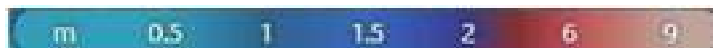
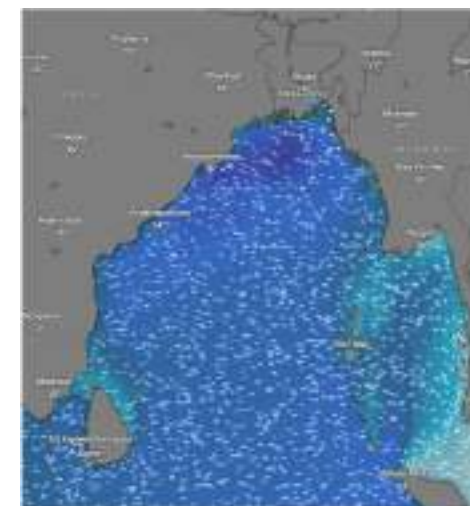
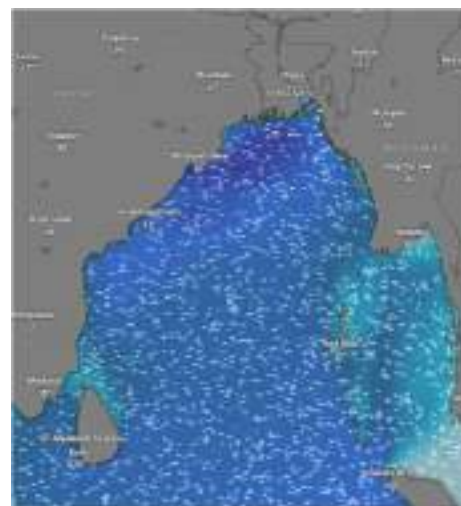
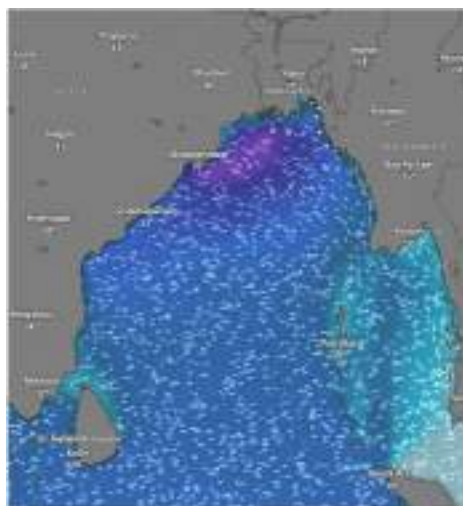
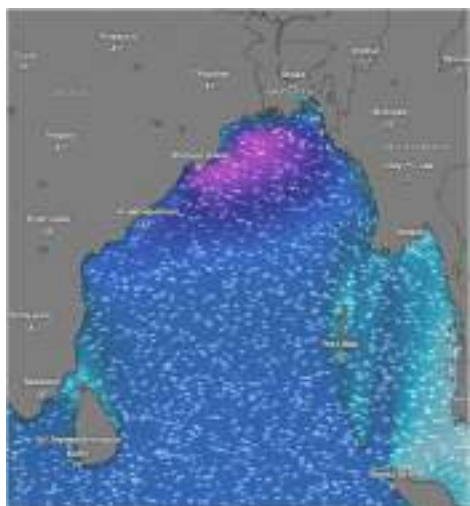
Date	Time	Air Temp (°C)		Sea Surface Temp (°C)	Baro Pressure (mbar)	Win Direction	Wind Spd (kts)		Wave Ht (m)	Sea State	Humidity (%)	Prob of Rain (%)	Amount of Rain (mm)
		Max	Min				Gusting	Avg					
28-04-26 (Tuesday)	0001	32	25	28	1007	SSW	25	17	1.8	4	90	10	0.0
	0600			27	1008	S	21	16	1.8	4	92	15	0.0
	1200			30	1006	S	20	15	1.8	4	76	22	0.0
	1800			28	1005	SSW	21	16	1.8	4	88	32	0.1
29-04-26 (Wednesday)	0001	32	25	28	1008	SSW	20	14	1.7	4	89	09	0.0
	0600			27	1009	SSW	26	18	1.6	4	91	12	0.0
	1200			30	1007	SSW	22	16	1.6	4	76	05	0.0
	1800			28	1006	SSW	21	15	1.7	4	85	11	0.0
30-04-26 (Thursday)	0001	32	26	28	1007	SSW	17	13	1.5	4	88	10	0.0
	0600			27	1008	SW	14	09	1.4	4	90	11	0.0
	1200			30	1006	SSW	15	10	1.4	4	75	07	0.0
	1800			28	1005	SW	16	11	1.4	4	84	10	0.0
01-05-26 (Friday)	0001	32	26	28	1007	S	17	13	1.4	4	90	09	0.0
	0600			27	1008	SSE	16	12	1.4	4	91	12	0.0
	1200			30	1006	SSW	20	14	1.4	4	75	14	0.0
	1800			28	1005	SE	16	12	1.4	4	84	18	0.0

28 Apr 2026

29 Apr 2026

30 Apr 2026

01 May 2026



Significant wave height (m)



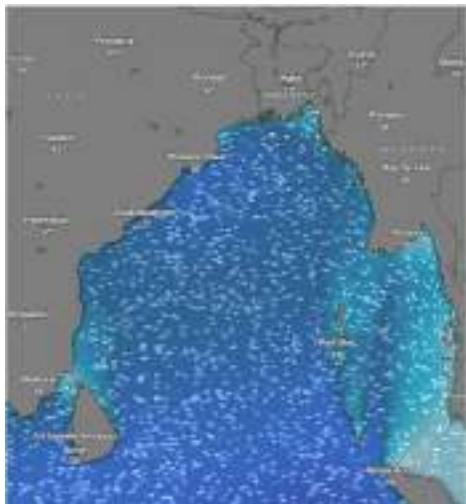
MARINE WEATHER FORECAST (24 April to 01 May 2026)

ABEAM TO ST. MARTIN'S LIGHT HOUSE (20° 37' N, 092° 08' E)

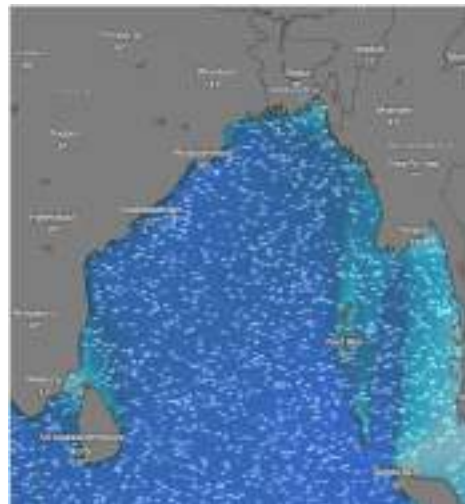


Date	Time	AirTemp (°C)		Sea Surface Temp (°C)	Baro Pressure (mbar)	Wind Direction	Wind Spd (kts)		Wave Ht (m)	Sea State	Humidity (%)	Prob of Rain (%)	Amount of Rain (mm)
		Max	Min				Gusting	Avg					
24-04-26 (Friday)	0001	33	27	28	1009	SW	11	07	0.9	3	88	06	0.0
	0600			27	1010	SSE	12	08	0.9	3	89	07	0.0
	1200			30	1008	SW	15	11	0.9	3	73	08	0.0
	1800			29	1007	W	16	12	0.9	3	85	09	0.0
25-04-26 (Saturday)	0001	33	27	28	1009	SE	11	08	0.9	3	87	10	0.0
	0600			27	1010	SSE	10	07	0.9	3	89	15	0.0
	1200			30	1008	SE	13	10	0.9	3	74	08	0.0
	1800			28	1007	SSE	14	10	0.9	3	85	12	0.0
26-04-26 (Sunday)	0001	33	27	28	1009	SW	12	08	0.9	3	88	12	0.0
	0600			27	1010	SSE	11	08	0.9	3	89	17	0.0
	1200			30	1008	SE	14	10	1.0	3	77	09	0.0
	1800			28	1007	SSE	15	11	1.1	3	83	14	0.0
27-04-26 (Monday)	0001	32	26	28	1007	SSW	16	11	1.2	3	90	12	0.0
	0600			27	1008	S	16	12	1.3	4	92	33	0.2
	1200			30	1007	SSW	18	14	1.4	4	76	15	0.0
	1800			28	1006	SSW	17	13	1.6	4	87	37	0.2

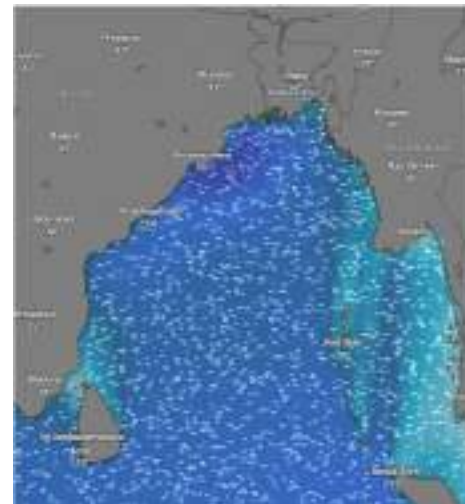
24 Apr 2026



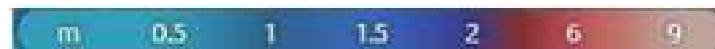
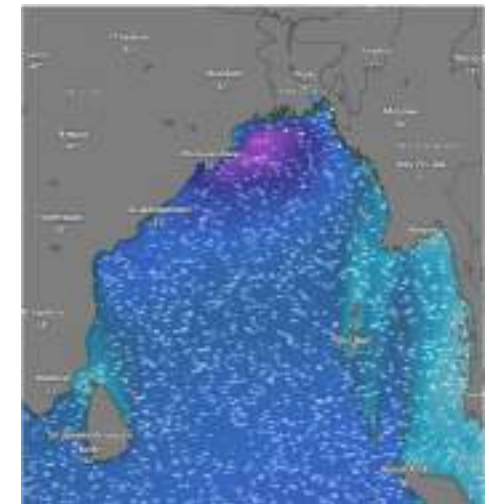
25 Apr 2026



26 Apr 2026



27 Apr 2026



Significant wave height (m)



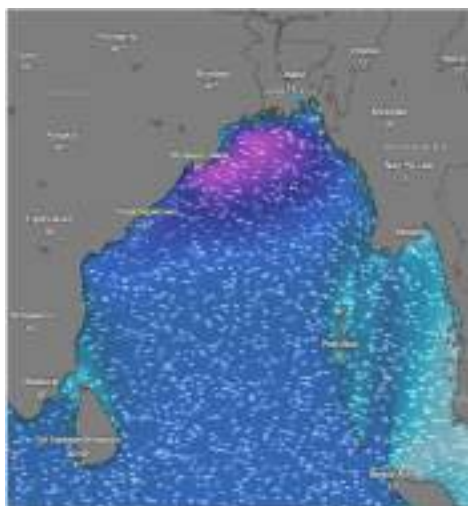
MARINE WEATHER FORECAST (24 April to 01 May 2026)

ABEAM TO ST. MARTIN'S LIGHT HOUSE (20° 37' N, 092° 08' E)

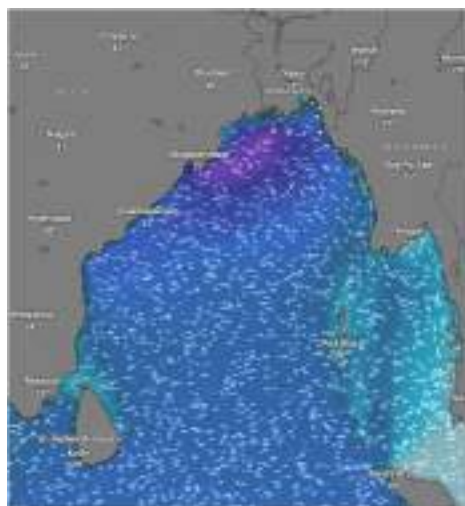


Date	Time	Air Temp (°C)		Sea Surface Temp (°C)	Baro Pressure (mbar)	Wind Direction	Wind Spd (kts)		Wave Ht (m)	Sea State	Humidity (%)	Prob of Rain (%)	Amount of Rain (mm)
		Max	Min				Gusting	Avg					
28-04-26 (Tuesday)	0001	32	25	28	1007	SW	16	12	1.7	4	90	24	0.1
	0600			27	1008	SSW	14	10	1.7	4	93	37	0.2
	1200			30	1006	SSW	18	14	1.7	4	77	22	0.0
	1800			28	1005	SSW	17	13	1.7	4	88	36	0.2
29-04-26 (Wednesday)	0001	32	25	28	1008	SSW	17	13	1.7	4	89	10	0.0
	0600			27	1009	SSW	16	12	1.6	4	91	16	0.0
	1200			30	1007	SSW	17	13	1.6	4	75	09	0.0
	1800			28	1006	SW	15	11	1.6	4	86	15	0.0
30-04-26 (Thursday)	0001	32	26	28	1007	SSW	15	09	1.4	4	90	11	0.0
	0600			27	1008	SSW	16	10	1.4	4	89	15	0.0
	1200			30	1006	SSW	14	08	1.4	4	76	10	0.0
	1800			28	1005	SW	13	06	1.4	4	87	14	0.0
01-05-26 (Friday)	0001	32	26	28	1007	SSW	12	08	1.4	4	90	10	0.0
	0600			27	1008	SSE	14	10	1.4	4	89	16	0.0
	1200			30	1006	SSW	15	11	1.5	4	76	09	0.0
	1800			28	1005	SW	18	14	1.5	4	87	14	0.0

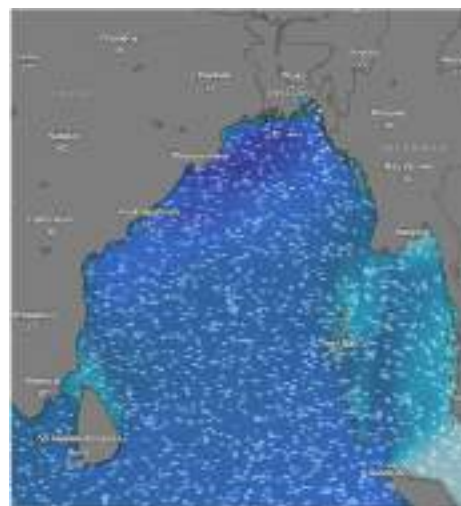
28 Apr 2026



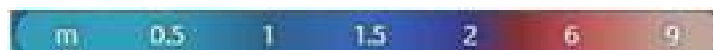
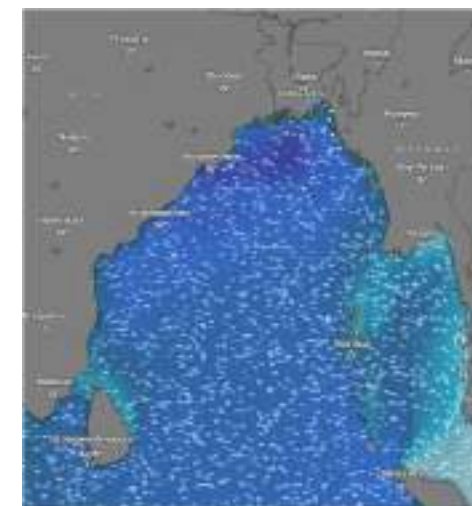
29 Apr 2026



30 Apr 2026



01 May 2026



Significant wave height (m)



MARINE WEATHER FORECAST (24 April to 01 May 2026)

PAYRA FAIRWAY (21° 22' N, 090° 6' E)



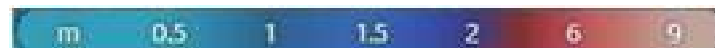
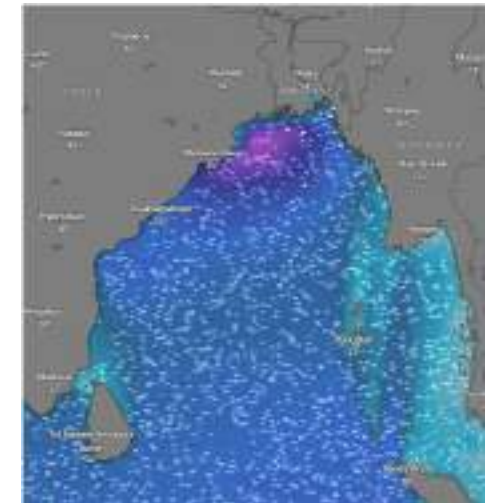
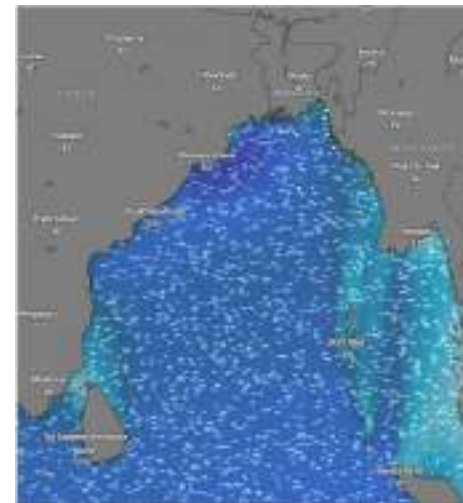
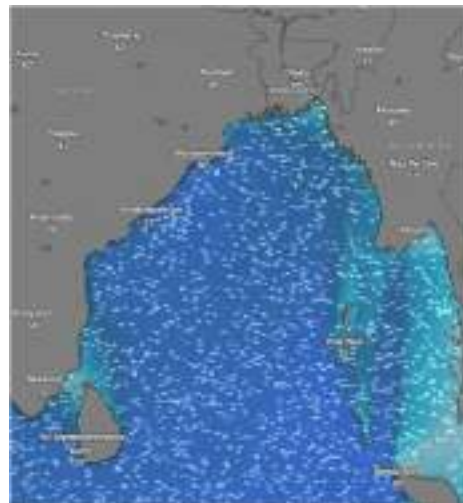
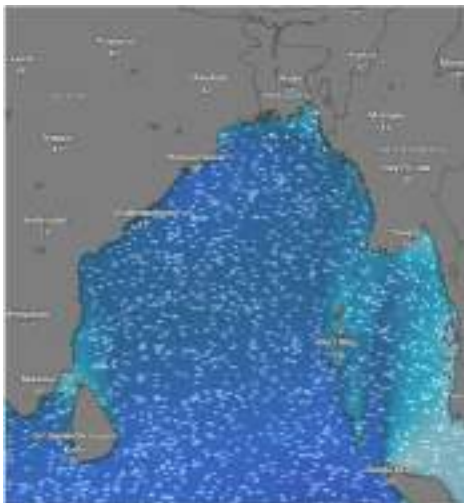
Date	Time	Air Temp (°C)		Sea Surface Temp (°C)	Baro Pressure (mbar)	Wind Direction	Wind Spd (kts)		Wave Ht (m)	Sea State	Humidity (%)	Prob of Rain (%)	Amount of Rain (mm)
		Max	Min				Gusting	Avg					
24-04-26 (Friday)	0001	33	27	28	1009	SW	17	10	1.2	3	89	08	0.0
	0600			27	1010	SW	11	07	1.1	3	90	07	0.0
	1200			30	1008	SSW	14	10	1.1	3	76	10	0.0
	1800			29	1007	SW	15	10	1.1	3	84	12	0.0
25-04-26 (Saturday)	0001	33	27	28	1009	SW	16	12	1.1	3	87	12	0.0
	0600			27	1010	SW	12	08	1.1	3	90	15	0.0
	1200			30	1008	SSW	15	11	1.1	3	72	09	0.0
	1800			28	1007	SW	15	11	1.2	3	85	14	0.0
26-04-26 (Sunday)	0001	33	27	28	1009	SW	13	09	1.2	3	87	12	0.0
	0600			27	1010	SW	14	10	1.3	4	90	15	0.0
	1200			30	1008	SSW	15	10	1.4	4	76	09	0.0
	1800			28	1007	SW	16	12	1.6	4	85	14	0.0
27-04-26 (Monday)	0001	32	26	28	1007	SSW	26	18	1.9	4	90	30	0.2
	0600			27	1008	SSW	25	17	1.9	4	92	24	0.1
	1200			30	1007	SSW	27	20	2.1	4	78	10	0.0
	1800			28	1006	SSW	28	22	2.3	4	87	16	0.0

24 Apr 2026

25 Apr 2026

26 Apr 2026

27 Apr 2026



Significant wave height (m)



MARINE WEATHER FORECAST (24 April to 01 May 2026)



PAYRA FAIRWAY (21° 22' N, 090° 6' E)

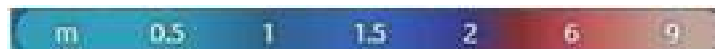
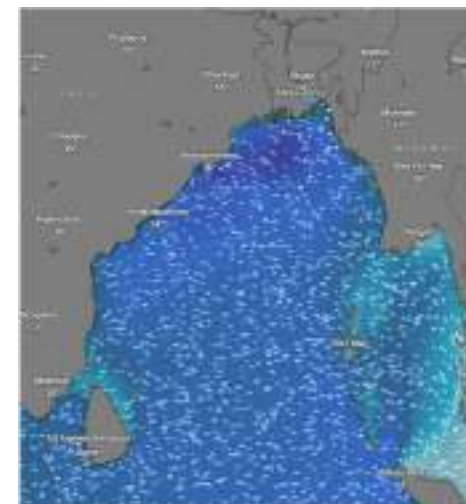
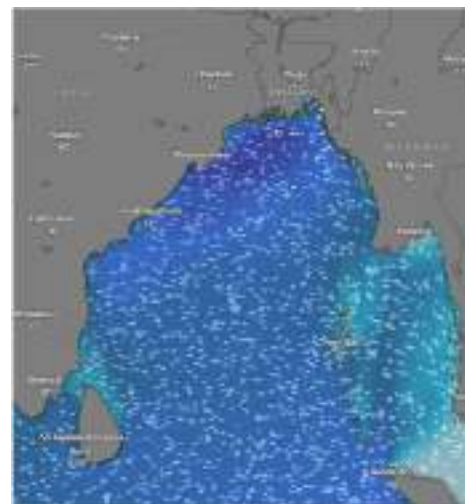
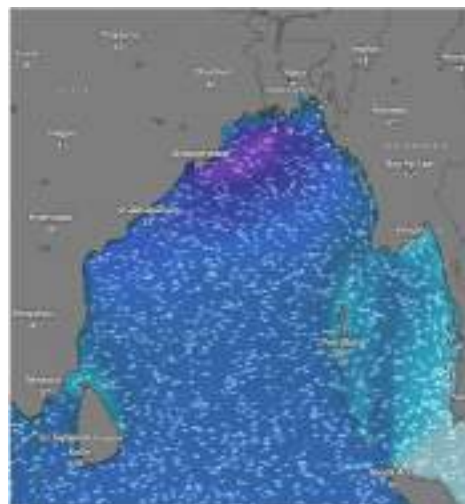
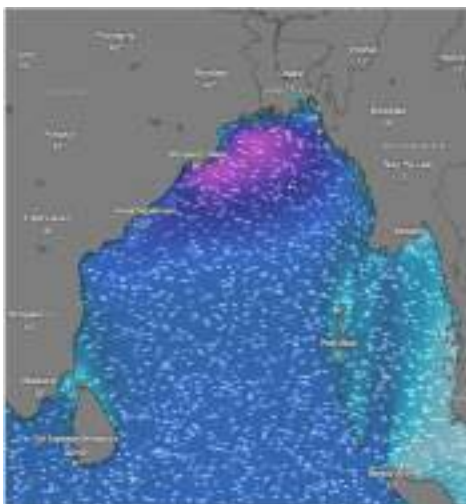
Date	Time	Air Temp (°C)		Sea Surface Temp (°C)	Baro Pressure (mbar)	Wind Direction	Wind Spd (kts)		Wae Ht (m)	Sea State	Humidity (%)	Prob of Rain (%)	Amount of Rain (mm)
		Max	Min				Gusting	Avg					
28-04-26 (Tuesday)	0001	32	25	28	1007	SSE	22	16	2.3	4	90	41	0.4
	0600			27	1008	SSW	26	18	2.3	4	92	32	0.2
	1200			30	1006	SSW	27	19	2.4	4	75	15	0.0
	1800			28	1005	SSW	27	20	2.3	4	87	43	0.4
29-04-26 (Wednesday)	0001	32	25	28	1008	SSW	26	18	2.3	4	90	22	0.1
	0600			27	1009	SW	26	19	2.3	4	93	32	0.2
	1200			30	1007	SSW	26	18	2.3	4	76	15	0.0
	1800			28	1006	SSW	27	20	2.1	4	87	21	0.0
30-04-26 (Thursday)	0001	32	26	28	1007	SSW	26	19	2.1	4	89	23	0.1
	0600			27	1008	SSW	25	17	1.9	4	90	25	0.2
	1200			30	1006	SW	25	17	1.8	4	75	14	0.0
	1800			28	1005	SSW	26	21	1.7	4	86	19	0.0
01-05-26 (Friday)	0001	32	26	28	1007	SSW	22	16	1.8	4	89	23	0.1
	0600			27	1008	SSW	21	15	1.8	4	90	25	0.2
	1200			30	1006	SW	26	18	1.9	4	75	14	0.0
	1800			28	1005	SW	26	19	1.7	4	86	19	0.0

28 Apr 2026

29 Apr 2026

30 Apr 2026

01 May 2026



Significant wave height (m)



MARINE WEATHER FORECAST (24 April to 01 May 2026)

MONGLA FAIRWAY (21° 26' N, 089° 34' E)



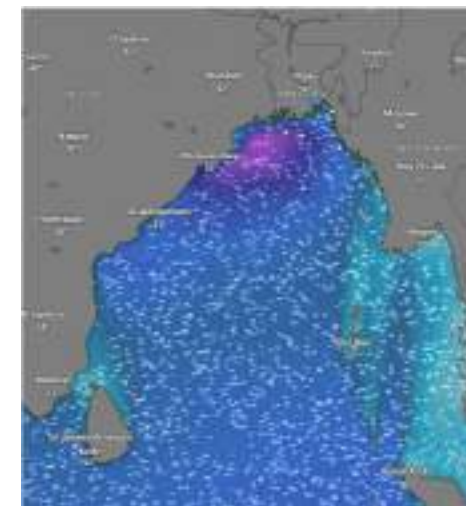
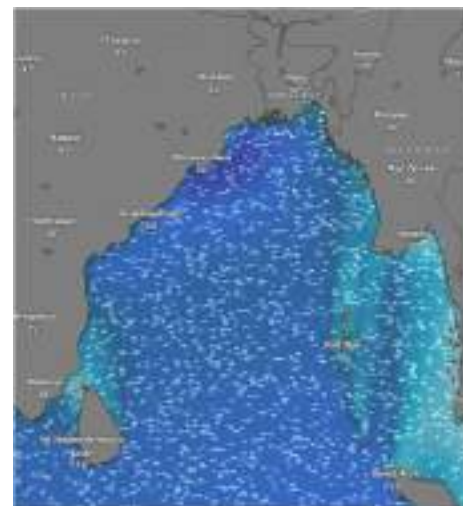
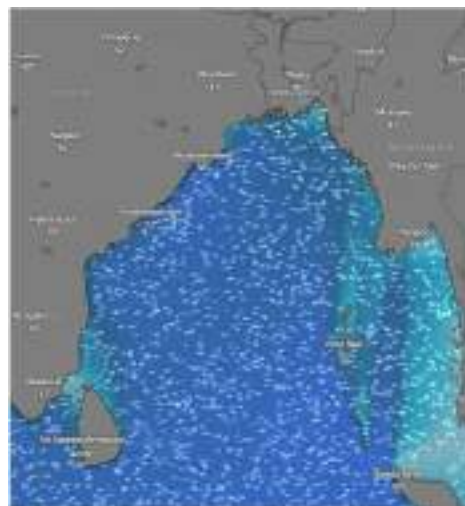
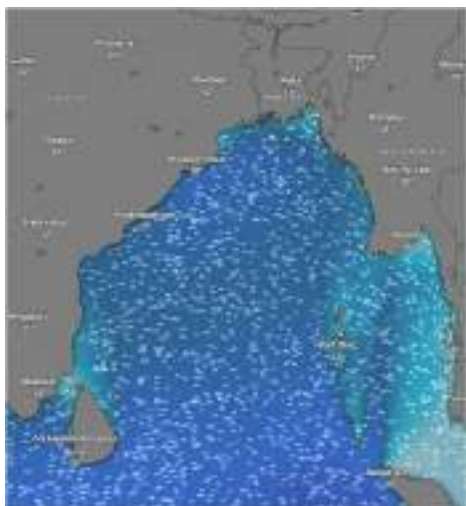
Date	Time	Air Temp (°C)		Sea Surface Temp (°C)	Baro Pressure (mbar)	Wind Direction	Wind Spd (kts)		Wave Ht (m)	Sea State	Humidity (%)	Prob of Rain (%)	Amount of Rain (mm)
		Max	Min				Gusting	Avg					
24-04-26 (Friday)	0001	33	27	28	1009	SSW	15	11	1.1	3	89	12	0.0
	0600			27	1010	SW	13	08	1.1	3	90	17	0.0
	1200			30	1008	S	14	10	1.1	3	75	08	0.0
	1800			29	1007	SSW	15	11	1.1	3	87	12	0.0
25-04-26 (Saturday)	0001	33	27	28	1009	SSW	15	11	1.1	3	88	13	0.0
	0600			27	1010	SW	13	09	1.1	3	90	15	0.0
	1200			30	1008	SSW	14	09	1.1	3	73	11	0.0
	1800			28	1007	SW	17	13	1.2	3	84	17	0.0
26-04-26 (Sunday)	0001	33	27	28	1009	SSW	21	16	1.3	4	88	13	0.0
	0600			27	1010	SW	22	14	1.4	4	90	15	0.0
	1200			30	1008	SSW	17	13	1.5	4	75	11	0.0
	1800			28	1007	SSW	18	14	1.4	4	86	17	0.0
27-04-26 (Monday)	0001	32	26	28	1007	SSW	27	20	2.0	4	90	24	0.1
	0600			27	1008	SSW	22	16	2.1	4	92	32	0.2
	1200			30	1007	SSW	25	21	2.1	4	76	15	0.0
	1800			28	1006	SSW	27	23	2.5	5	87	28	0.1

24 Apr 2026

25 Apr 2026

26 Apr 2026

27 Apr 2026



Significant wave height (m)



MARINE WEATHER FORECAST (24 April to 01 May 2026)

MONGLA FAIRWAY (21° 26' N, 089° 34' E)



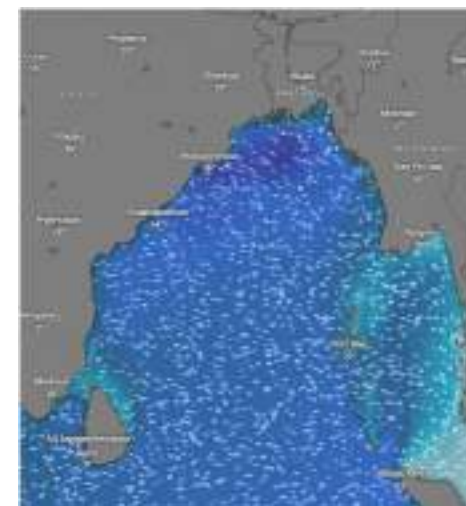
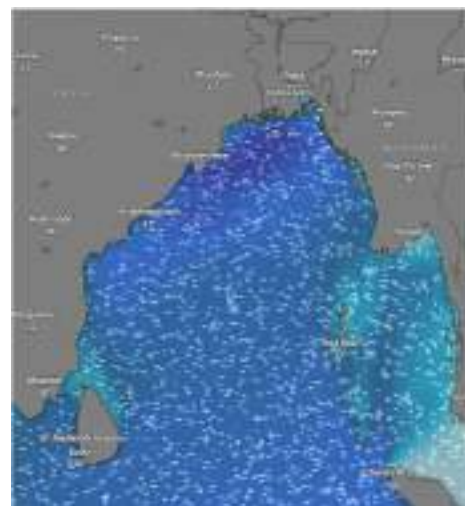
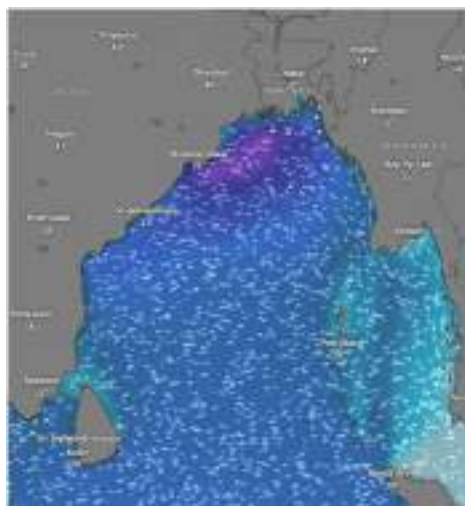
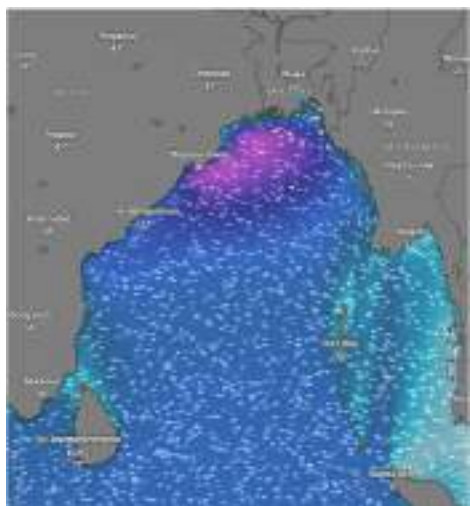
Date	Time	Air Temp (°C)		Sea Surface Temp (°C)	Baro Pressure (mbar)	Wind Direction	Wind Spd (kts)		Wave Ht (m)	Sea State	Humidity (%)	Prob of Rain (%)	Amount of Rain (mm)
		Max	Min				Gusting	Avg					
28-04-26 (Tuesday)	0001	32	25	28	1007	SSW	19	14	2.4	4	89	41	0.4
	0600			27	1008	SW	26	18	2.4	4	90	32	0.2
	1200			30	1006	SSW	27	19	2.5	5	76	24	0.1
	1800			28	1005	SSW	27	20	2.4	4	87	28	0.2
29-04-26 (Wednesday)	0001	32	25	28	1008	SSW	28	20	2.4	4	90	14	0.0
	0600			27	1009	SW	27	20	2.4	4	93	22	0.1
	1200			30	1007	SW	27	19	2.4	4	78	15	0.0
	1800			28	1006	SSW	28	21	2.2	4	86	30	0.1
30-04-26 (Thursday)	0001	32	26	28	1007	SSW	27	20	2.1	4	91	13	0.0
	0600			27	1008	SW	25	19	2.0	4	90	20	0.1
	1200			30	1006	SW	23	17	1.9	4	74	12	0.0
	1800			28	1005	SSW	22	14	1.8	4	82	26	0.1
01-05-26 (Friday)	0001	32	26	28	1007	SSW	25	17	1.8	4	91	15	0.0
	0600			27	1008	SW	24	16	1.8	4	90	24	0.1
	1200			30	1006	SW	25	17	2.0	4	76	16	0.0
	1800			28	1005	SW	26	18	1.3	4	87	31	0.2

28 Apr 2026

29 Apr 2026

30 Apr 2026

01 May 2026



Significant wave height (m)



MARINE WEATHER FORECAST (24 April to 01 May 2026)

OUTER EEZ (18° 48' N, 090° 30' E)



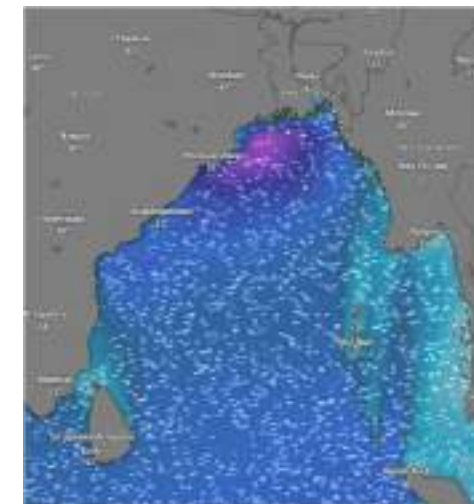
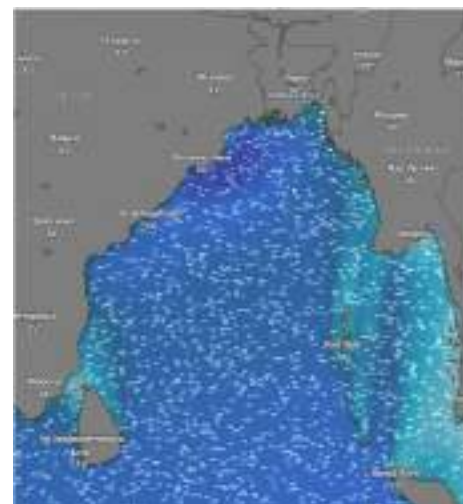
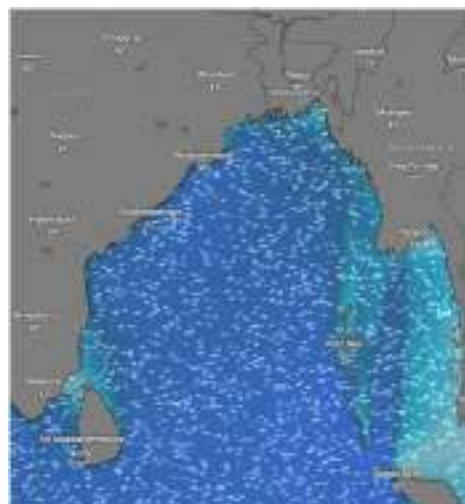
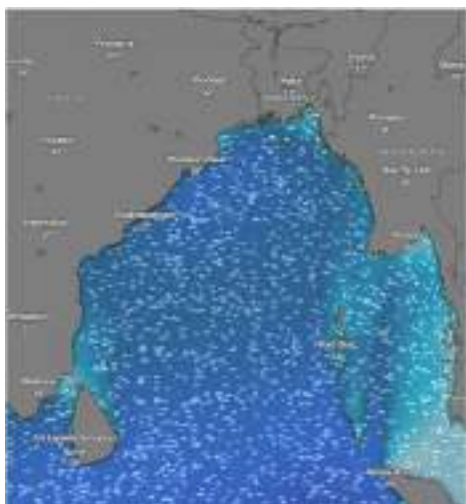
Date	Time	Air Temp (°C)		Sea Surface Temp (°C)	Baro Pressure (mbar)	Wind Direction	Wind Spd (kts)		Wave Ht (m)	Sea State	Humidity (%)	Prob of Rain (%)	Amount of Rain (mm)
		Max	Min				Gusting	Avg					
24-04-26 (Friday)	0001	33	26	28	1009	W	20	10	1.2	3	88	10	0.0
	0600			27	1010	SW	10	06	1.2	3	90	12	0.0
	1200			30	1008	SW	16	05	1.2	3	75	13	0.0
	1800			29	1007	SW	15	09	1.1	3	87	14	0.0
25-04-26 (Saturday)	0001	32	26	28	1010	SW	12	07	1.1	3	89	12	0.0
	0600			27	1011	SW	13	08	1.1	3	90	16	0.0
	1200			30	1009	SW	15	11	1.1	3	74	10	0.0
	1800			28	1008	SW	14	10	1.1	3	85	17	0.0
26-04-26 (Sunday)	0001	32	26	28	1009	SW	13	09	1.3	4	89	10	0.0
	0600			27	1010	SSW	12	08	1.3	4	90	16	0.0
	1200			30	1008	SW	12	08	1.3	4	75	11	0.0
	1800			28	1007	SW	13	09	1.5	4	86	15	0.0
27-04-26 (Monday)	0001	31	25	28	1007	SW	22	16	1.5	4	90	32	0.2
	0600			27	1008	SSW	24	17	1.7	4	92	24	0.1
	1200			30	1007	SSW	21	15	1.8	4	77	15	0.0
	1800			28	1006	SSW	26	19	1.9	4	88	22	0.1

24 Apr 2026

25 Apr 2026

26 Apr 2026

27 Apr 2026



Significant wave height (m)



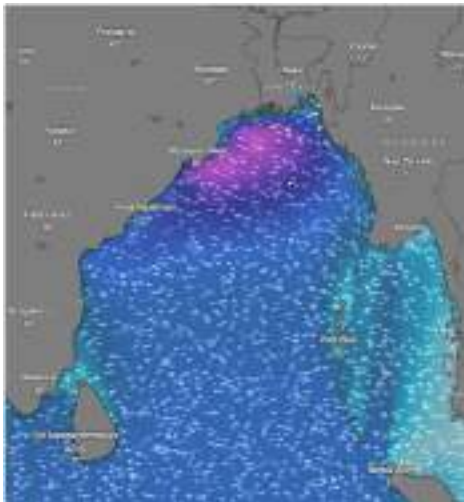
MARINE WEATHER FORECAST (24 April to 01 May 2026)

OUTER EEZ (18° 48' N, 090° 30' E)

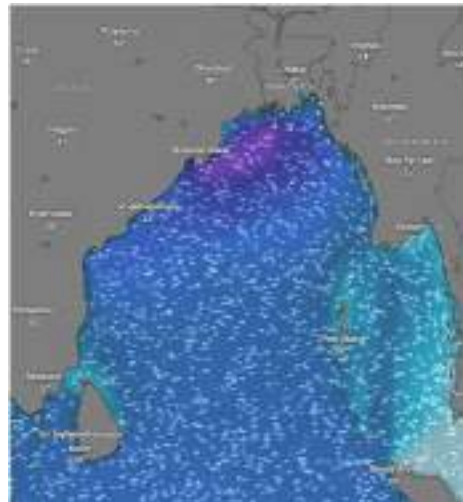


Date	Time	Air Temp (°C)		Sea Surface Temp (°C)	Baro Pressure (mbar)	Wind Direction	Wind Spd (kts)		Wave Ht (m)	Sea State	Humidity (%)	Prob of Rain (%)	Amount of Rain (mm)
		Max	Min				Gusting	Avg					
28-04-26 (Tuesday)	0001	31	25	28	1008	SW	25	17	2.0	4	90	40	0.4
	0600			27	1009	SSW	26	18	2.1	4	93	32	0.2
	1200			30	1007	SSW	20	15	2.0	4	75	18	0.1
	1800			28	1006	SW	22	16	2.0	4	88	27	0.1
29-04-26 (Wednesday)	0001	31	25	28	1009	SSW	25	17	2.1	4	90	12	0.0
	0600			27	1010	SSW	26	18	2.0	4	92	31	0.2
	1200			30	1007	SSW	22	16	1.9	4	75	15	0.0
	1800			28	1006	SW	21	15	1.8	4	88	24	0.1
30-04-26 (Thursday)	0001	31	25	28	1008	SSW	20	13	1.8	4	88	13	0.0
	0600			27	1009	SSW	25	16	1.7	4	90	29	0.2
	1200			30	1007	SSW	22	15	1.6	4	76	16	0.0
	1800			28	1006	SW	19	11	1.7	4	87	23	0.1
01-05-26 (Friday)	0001	31	25	28	1007	SW	15	11	1.6	4	89	20	0.0
	0600			27	1008	SSW	20	15	1.6	4	90	32	0.2
	1200			30	1006	SSW	24	16	1.8	4	76	15	0.0
	1800			28	1005	SSW	26	18	1.8	4	87	24	0.1

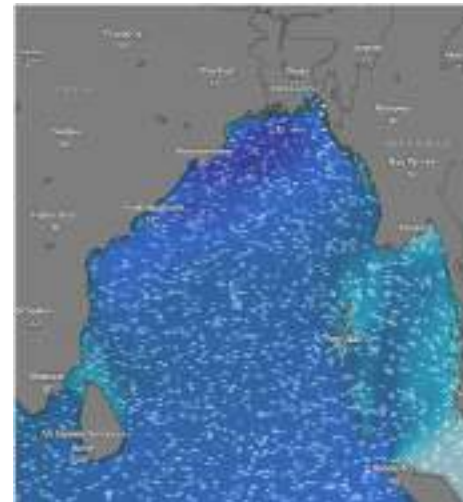
28 Apr 2026



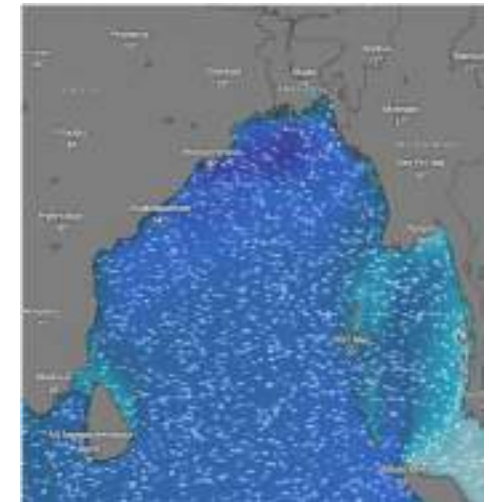
29 Apr 2026



30 Apr 2026



01 May 2026



Significant wave height (m)



PREDICTED SURFACE PRESSURE FORECAST (24 to 30 April 2026)



24 Apr 2026



25 Apr 2026



26 Apr 2026



27 Apr 2026



28 Apr 2026



29 Apr 2026



30 Apr 2026

