



SUMMARY OF MARINE WEATHER FORECAST
COASTAL AREA OF BANGLADESH
DATE: 23 to 30 Dec 2024



Fleet forecast	The well-marked low pressure area over westcentral Bay of Bengal weakened into a low pressure area over the same area and has become unimportant. seasonal low lies over south Bay.
Wind direction, speed	North/North-easterly 9 kts, (Temporary gusting up to 25 kts).
Wave height & sea state	Wave height: 0.1 to 1.4 m (Sea state:1 to 4).
Sea surface temperature	18°C - 26°C (May remain nearly unchanged).
Baro pressure	1011-1018 mb.
Rainfall	Temporary partly cloudy sky over Bay of Bengal & adjoining area.
Fog	Light to moderate fog may occur at places over the coastal area during midnight till morning.

Outlook for 23 to 30 Dec 2024: Weather may remain mainly dry with temporary partly cloudy Sky & Night temperature may fall slightly.



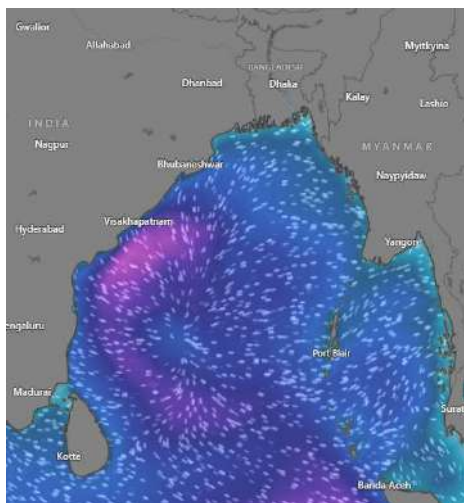
MARINE WEATHER FORECAST (23 to 30 Dec 2024)

PATENGA POINT (22° 12' N, 091° 38' E)

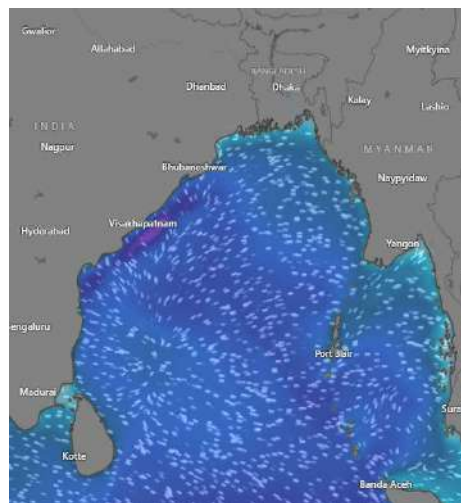


Date	Time	Air Temp (°C)		Sea Surface Temp (°C)	Baro Pressure (mbar)	Wind Direction	Wind Spd (kts)		Wave Ht (m)	Sea State	Humidity (%)	Prob of Rain (%)	Amount of Rain (mm)
		Max	Min				Gusting	Avg					
23-12-24 (Monday)	0001	27	15	20	1013	NE	18	12	0.5	2	80	10	0.0
	0600			18	1016	NNE	15	10	0.4	2	87	11	0.0
	1200			23	1013	NW	11	7	0.3	2	51	12	0.0
	1800			22	1013	NW	12	9	0.2	2	63	10	0.0
24-12-24 (Tuesday)	0001	27	18	20	1013	NNE	11	8	0.3	2	79	10	0.0
	0600			18	1016	NNE	11	7	0.3	2	87	11	0.0
	1200			23	1013	NW	10	6	0.2	2	53	12	0.0
	1800			22	1015	NW	8	5	0.2	2	63	10	0.0
25-12-24 (Wednesday)	0001	25	17	20	1015	NNE	12	10	0.3	2	76	10	0.0
	0600			19	1017	NE	10	4	0.2	2	79	11	0.0
	1200			24	1014	WNW	7	5	0.2	2	62	12	0.0
	1800			23	1015	NW	6	2	0.1	1	71	10	0.0
26-12-24 (Thursday)	0001	29	17	20	1015	N	9	7	0.2	2	83	10	0.0
	0600			20	1016	NNE	15	11	0.4	2	84	11	0.0
	1200			24	1014	NE	10	8	0.2	2	56	12	0.0
	1800			23	1017	NW	16	12	0.4	2	63	10	0.0

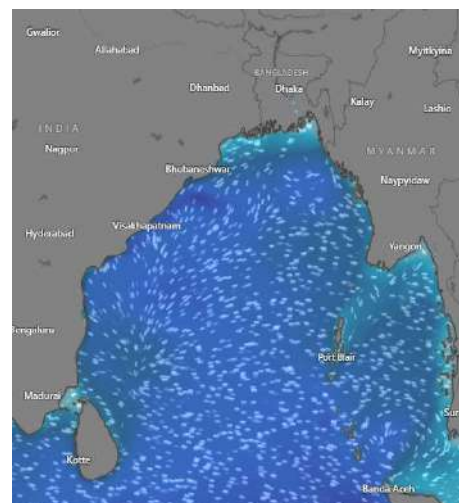
23 Dec 2024



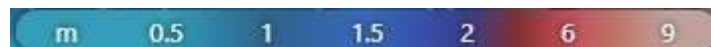
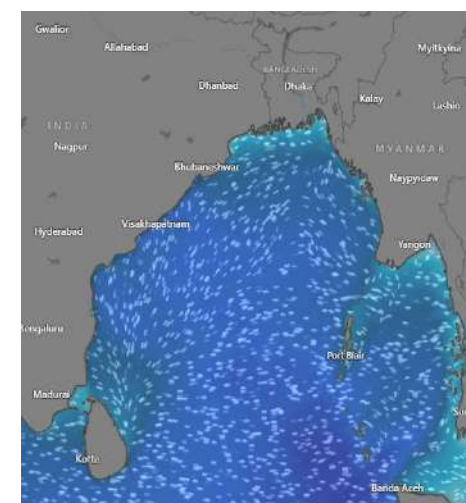
24 Dec 2024



25 Dec 2024



26 Dec 2024



Significant wave height (m)



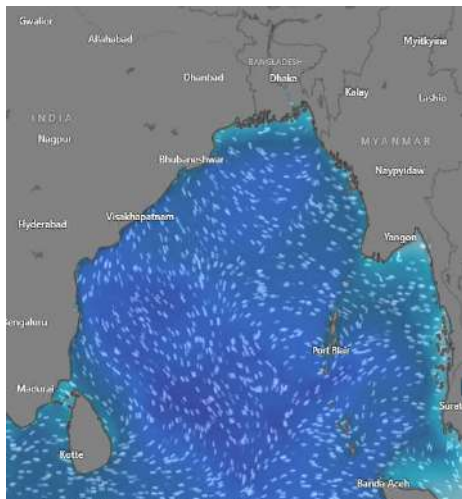
MARINE WEATHER FORECAST (23 to 30 Dec 2024)

PATENGA POINT (22° 12' N, 091° 38' E)

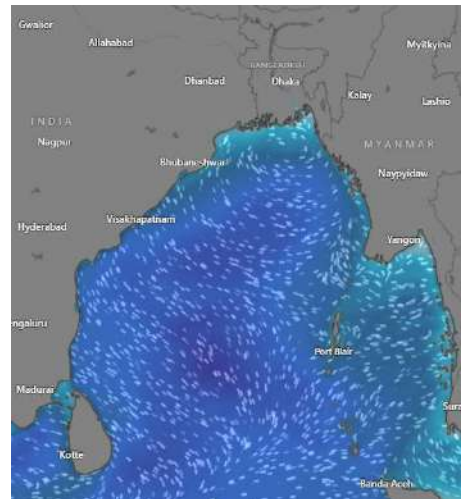


Date	Time	Air Temp (°C)		Sea Surface Temp (°C)	Baro Pressure (mbar)	Wind Direction	Wind Spd (kts)		Wave Ht (m)	Sea State	Humidity (%)	Prob of Rain (%)	Amount of Rain (mm)
		Max	Min				Gusting	Avg					
27-12-24 (Friday)	0001	28	15	21	1017	NE	17	12	0.4	2	80	10	0.0
	0600			19	1016	NE	18	13	0.5	2	87	11	0.0
	1200			24	1015	N	17	12	0.4	2	51	10	0.0
	1800			23	1017	N	16	13	0.3	2	63	17	0.0
28-12-24 (Saturday)	0001	27	15	21	1015	NNE	17	13	0.5	2	79	17	0.0
	0600			19	1017	NW	16	11	0.5	2	87	10	0.0
	1200			25	1012	NW	17	13	0.4	2	53	11	0.0
	1800			24	1013	NNW	16	11	0.4	2	63	10	0.0
29-12-24 (Sunday)	0001	27	17	21	1015	NNE	17	12	0.4	2	76	17	0.0
	0600			19	1016	NW	18	13	0.5	2	79	10	0.0
	1200			23	1012	NW	17	12	0.4	2	62	11	0.0
	1800			22	1014	NNW	16	13	0.3	2	71	10	0.0
30-12-24 (Monday)	0001	27	16	20	1014	NNE	17	13	0.5	2	83	17	0.0
	0600			18	1016	NW	16	11	0.5	2	84	10	0.0
	1200			23	1012	NW	17	13	0.4	2	56	11	0.0
	1800			21	1014	NNW	16	11	0.4	2	63	10	0.0

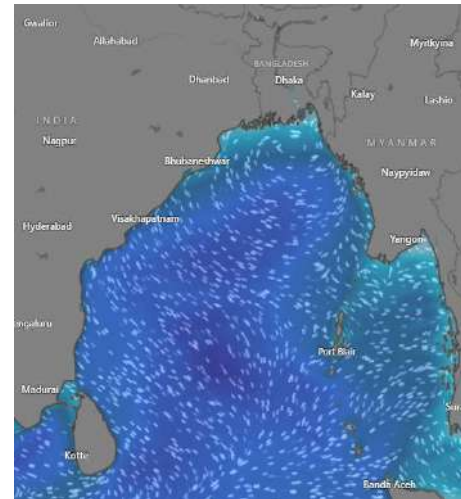
27 Dec 2024



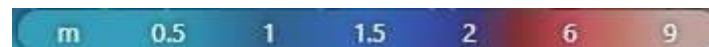
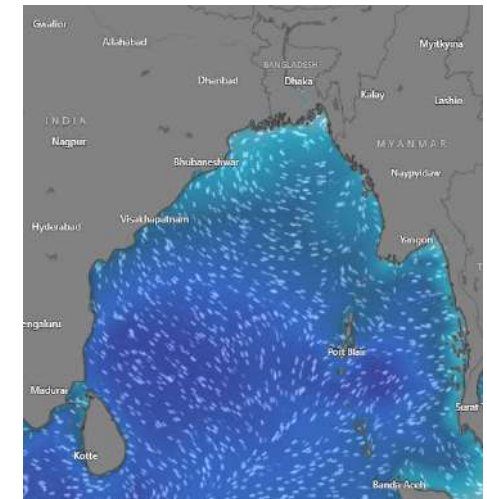
28 Dec 2024



29 Dec 2024



30 Dec 2024



Significant wave height (m)



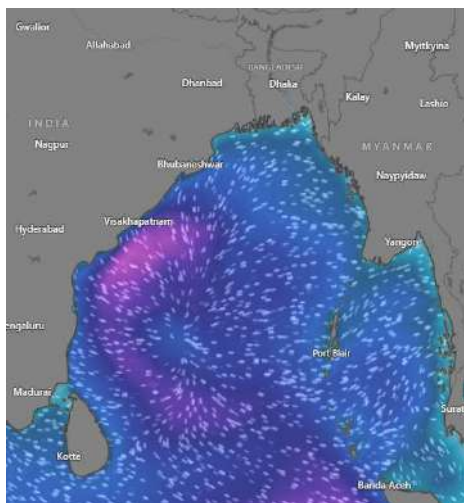
MARINE WEATHER FORECAST (23 to 30 Dec 2024)

ABEAM TO KUTUBDIA (21° 51' N, 091° 40' E)

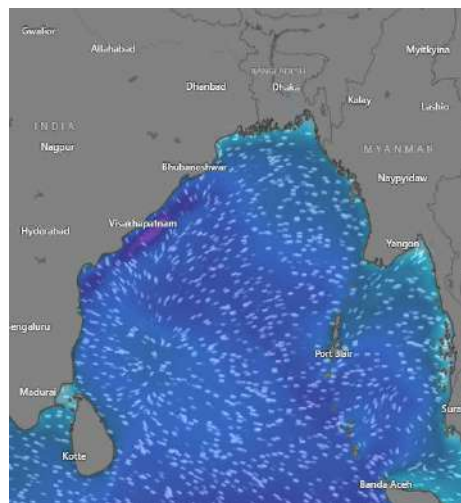


Date	Time	Air Temp (°C)		Sea Surface Temp (°C)	Baro Pressure (mbar)	Wind Direction	Wind Spd (kts)		Wave Ht (m)	Sea State	Humidity (%)	Prob of Rain (%)	Amount of Rain (mm)
		Max	Min				Gusting	Avg					
23-12-24 (Monday)	0001	27	18	22	1013	NE	18	12	0.5	2	78	11	0.0
	0600			21	1016	NNE	17	10	0.5	2	83	10	0.0
	1200			24	1012	NNW	13	10	0.4	2	59	10	0.0
	1800			22	1013	NW	13	9	0.4	2	69	14	0.0
24-12-24 (Tuesday)	0001	26	20	22	1013	N	11	9	0.3	2	75	12	0.0
	0600			21	1016	NNE	13	10	0.4	2	79	11	0.0
	1200			24	1011	NNW	11	9	0.3	2	59	10	0.0
	1800			23	1014	NNW	10	6	0.3	2	69	10	0.0
25-12-24 (Wednesday)	0001	24	19	22	1014	NNE	12	9	0.3	2	77	24	0.0
	0600			21	1017	NNE	20	7	0.4	2	73	20	0.0
	1200			24	1014	NNW	10	3	0.3	2	65	16	0.0
	1800			23	1015	NNW	6	4	0.2	2	72	10	0.0
26-12-24 (Thursday)	0001	27	18	22	1014	NE	12	9	0.3	2	77	13	0.0
	0600			21	1017	NE	17	10	0.4	3	79	14	0.0
	1200			23	1015	NNE	13	10	0.4	2	61	12	0.0
	1800			22	1016	NE	17	13	0.4	2	69	10	0.0

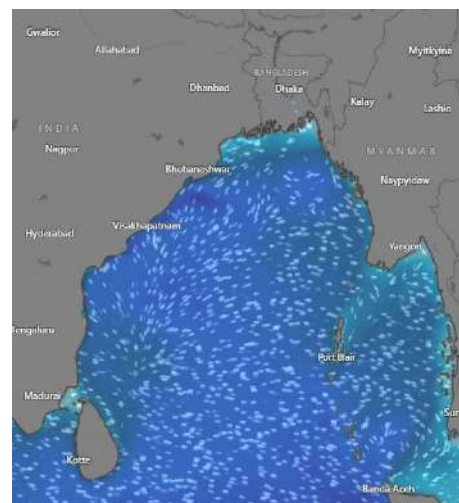
23 Dec 2024



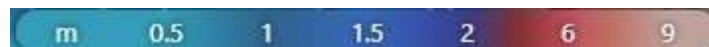
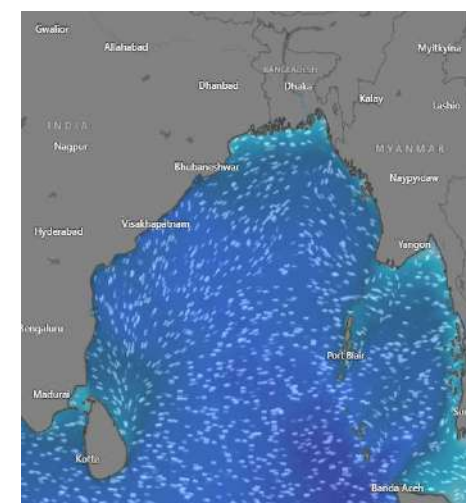
24 Dec 2024



25 Dec 2024



26 Dec 2024



Significant wave height (m)

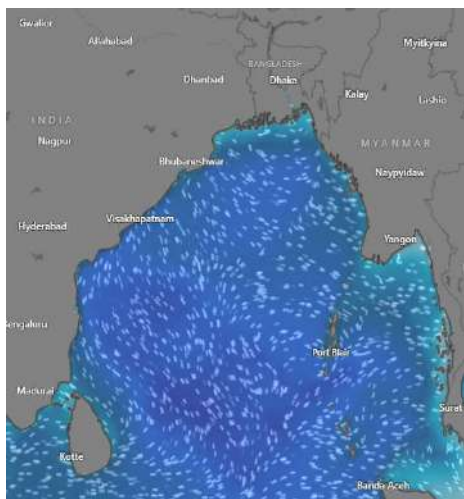


MARINE WEATHER FORECAST (23 to 30 Dec 2024) ABEAM TO KUTUBDIA (21° 51' N, 091° 40' E)

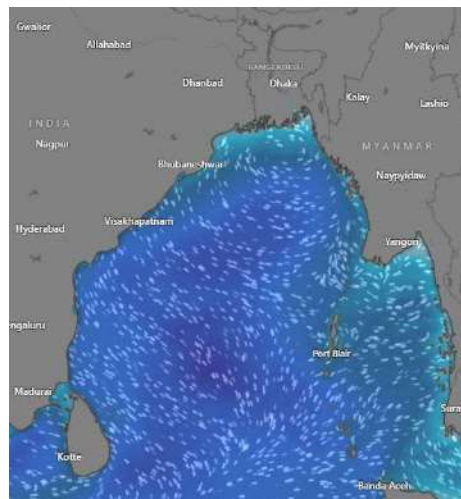


Date	Time	Air Temp (°C)		Sea Surface Temp (°C)	Baro Pressure (mbar)	Wind Direction	Wind Spd (kts)		Wave Ht (m)	Sea State	Humidity (%)	Prob of Rain (%)	Amount of Rain (mm)
		Max	Min				Gusting	Avg					
27-12-24 (Friday)	0001	27	17	22	1016	NE	14	11	0.4	2	78	78	0.0
	0600			23	1018	NNE	15	11	0.4	2	83	83	0.0
	1200			25	1014	NW	15	10	0.4	2	59	59	0.0
	1800			24	1015	WNW	16	13	0.4	2	72	69	0.0
28-12-24 (Saturday)	0001	25	17	23	1015	NE	10	5	0.5	2	77	75	0.0
	0600			22	1017	NNE	21	16	0.5	2	84	79	0.0
	1200			25	1012	NW	20	11	0.5	2	61	59	0.0
	1800			24	1015	NE	10	8	0.5	2	69	69	0.0
29-12-24 (Sunday)	0001	25	18	23	1015	NE	23	11	0.5	2	77	77	0.0
	0600			21	1016	NNE	15	9	0.4	2	78	73	0.0
	1200			24	1012	NW	13	5	0.3	2	69	65	0.0
	1800			23	1014	NE	11	3	0.3	2	76	72	0.0
30-12-24 (Monday)	0001	26	18	22	1014	NNE	23	4	0.5	2	83	77	0.0
	0600			20	1016	NNW	15	8	0.4	2	81	79	0.0
	1200			24	1012	NNW	13	7	0.3	2	70	61	0.0
	1800			21	1014	NW	11	3	0.3	2	74	69	0.0

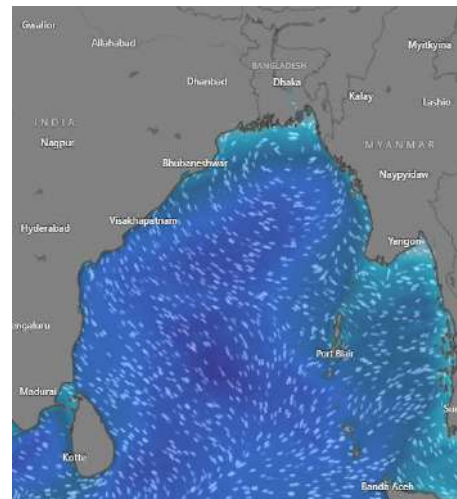
27 Dec 2024



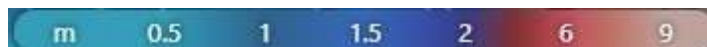
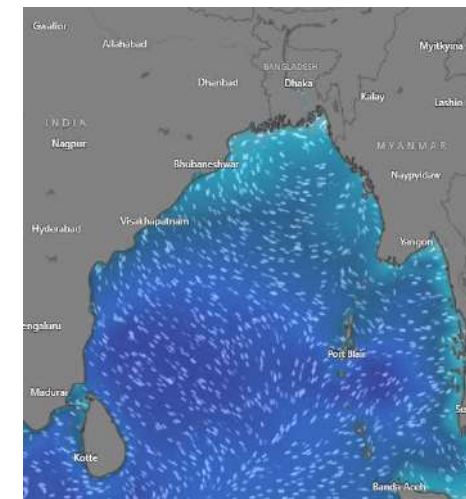
28 Dec 2024



29 Dec 2024



30 Dec 2024



Significant wave height (m)



MARINE WEATHER FORECAST (23 to 30 Dec 2024) ABEAM TO ELEPHANT POINT (21° 11' N, 091° 52' E)



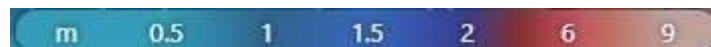
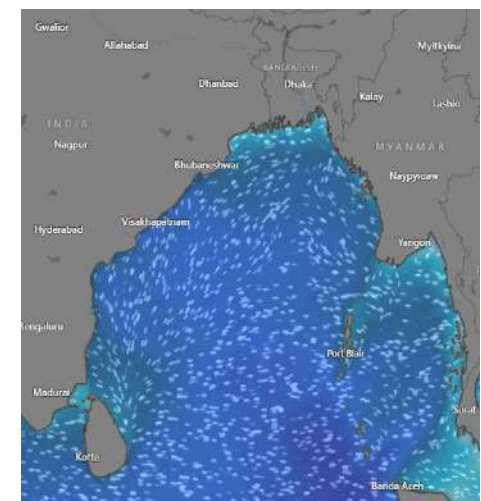
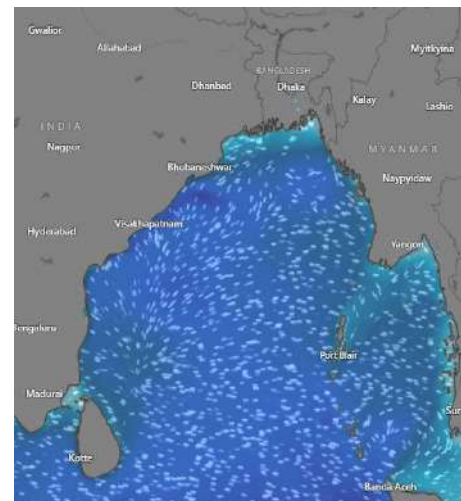
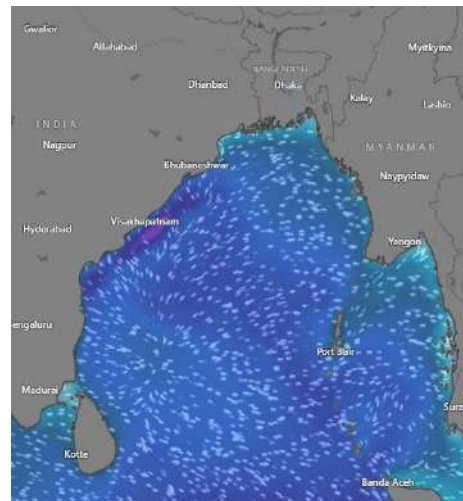
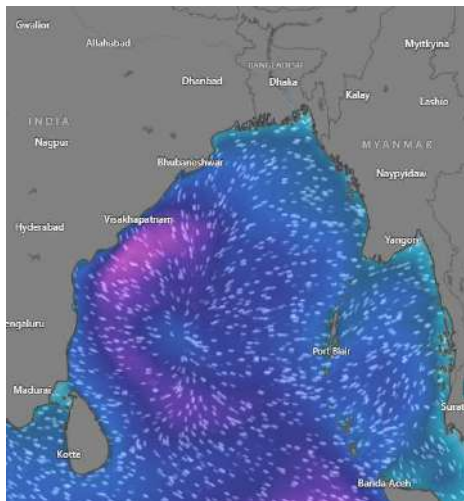
Date	Time	Air Temp (°C)		Sea Surface Temp (°C)	Baro Pressure (mbar)	Wind Direction	Wind Spd (kts)		Wave Ht (m)	Sea State	Humidity (%)	Prob of Rain (%)	Amount of Rain (mm)
		Max	Min				Gusting	Avg					
23-12-24 (Monday)	0001	27	18	24	1013	N	18	14	0.9	3	76	10	0.0
	0600			23	1015	NNE	20	11	0.9	3	84	14	0.0
	1200			25	1012	NNW	16	12	0.9	3	49	11	0.0
	1800			24	1013	NNW	17	13	0.9	3	68	12	0.0
24-12-24 (Tuesday)	0001	27	20	25	1013	N	16	11	0.9	3	76	10	0.0
	0600			23	1016	N	17	11	0.9	3	77	14	0.0
	1200			25	1013	N	14	10	0.8	3	51	11	0.0
	1800			24	1014	NW	13	11	0.9	3	67	10	0.0
25-12-24 (Wednesday)	0001	24	19	25	1014	N	17	13	0.9	3	79	10	0.0
	0600			23	1017	N	25	17	1.1	3	80	14	0.0
	1200			25	1013	NNW	20	12	0.9	3	52	11	0.0
	1800			24	1014	NNW	20	11	0.7	3	67	12	0.0
26-12-24 (Thursday)	0001	27	18	25	1014	NE	16	12	0.7	3	76	20	0.0
	0600			23	1017	NE	20	13	0.8	3	77	24	0.0
	1200			25	1015	NE	18	13	0.8	3	64	24	0.0
	1800			24	1016	N	19	13	0.8	3	74	10	0.0

23 Dec 2024

24 Dec 2024

25 Dec 2024

26 Dec 2024



Significant wave height (m)

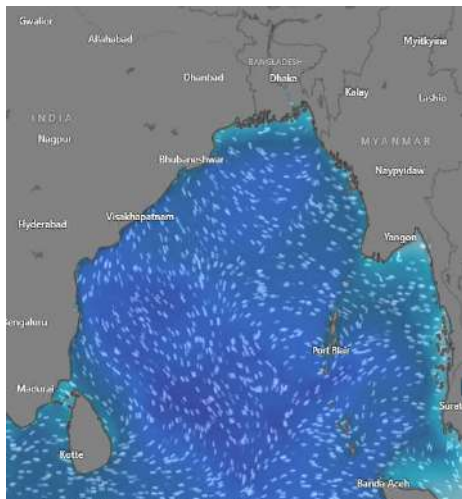


MARINE WEATHER FORECAST (23 to 30 Dec 2024) ABEAM TO ELEPHANT POINT (21° 11' N, 091° 52' E)

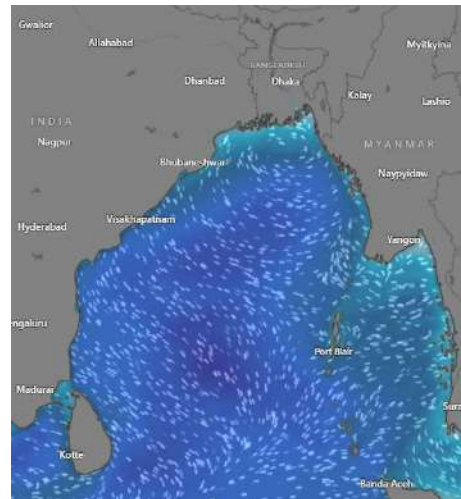


Date	Time	Air Temp (°C)		Sea Surface Temp (°C)	Baro Pressure (mbar)	Wind Direction	Wind Spd (kts)		Wave Ht (m)	Sea State	Humidity (%)	Prob of Rain (%)	Amount of Rain (mm)
		Max	Min				Gusting	Avg					
27-12-24 (Friday)	0001	28	17	24	1016	NNE	24	18	1.1	3	76	12	0.0
	0600			23	1018	NNE	25	16	1.1	3	84	20	0.0
	1200			26	1014	NE	19	14	0.9	3	46	24	0.0
	1800			25	1015	NNE	20	12	0.8	3	68	10	0.0
28-12-24 (Saturday)	0001	27	17	24	1015	NE	17	12	0.8	3	74	12	0.0
	0600			23	1017	NNE	17	13	0.9	3	84	20	0.0
	1200			26	1013	N	19	12	0.8	3	52	24	0.0
	1800			24	1015	NNE	18	14	0.8	3	70	19	0.0
29-12-24 (Sunday)	0001	27	18	25	1015	NE	17	8	1.3	3	79	10	0.0
	0600			23	1016	NNE	14	7	1.2	3	80	12	0.0
	1200			25	1012	SSE	11	5	1.2	3	52	11	0.0
	1800			24	1013	SSE	13	4	1.1	3	67	16	0.0
30-12-24 (Monday)	0001	27	18	25	1014	E	11	5	1.1	3	76	12	0.0
	0600			23	1014	NNE	12	9	1.0	3	77	13	0.0
	1200			25	1011	SSE	12	4	1.0	3	64	15	0.0
	1800			24	1012	S	7	3	0.9	3	74	14	0.0

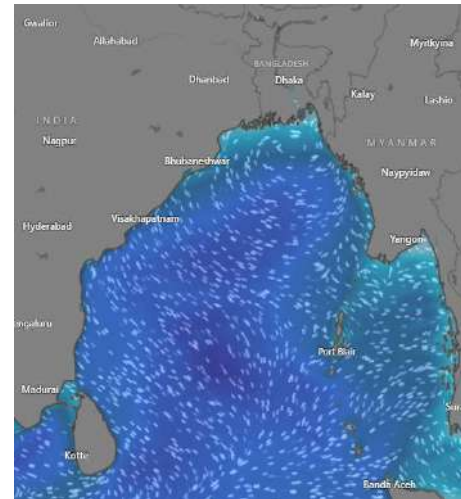
27 Dec 2024



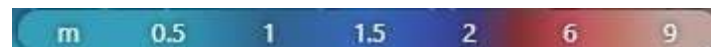
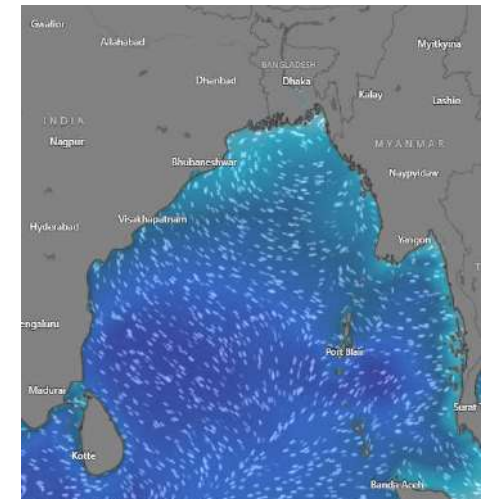
28 Dec 2024



29 Dec 2024



30 Dec 2024



Significant wave height (m)

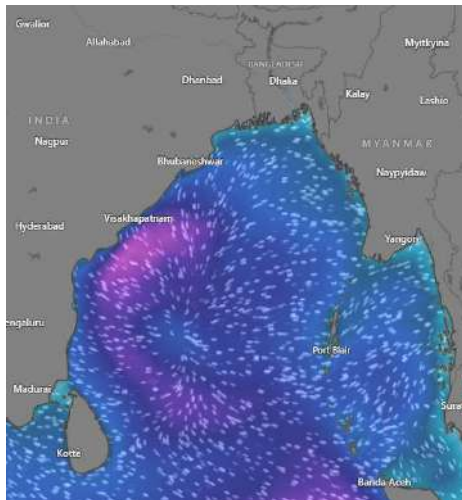


MARINE WEATHER FORECAST (23 to 30 Dec 2024) ABEAM TO ST. MARTIN'S LIGHT HOUSE (20° 37' N, 092° 08' E)

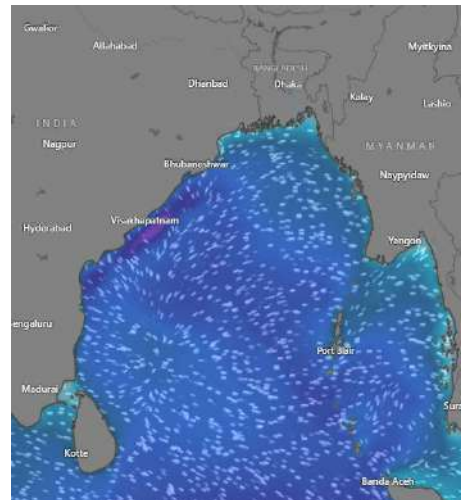


Date	Time	Air Temp (°C)		Sea Surface Temp (°C)	Baro Pressure (mbar)	Wind Direction	Wind Spd (kts)		Wave Ht (m)	Sea State	Humidity (%)	Prob of Rain (%)	Amount of Rain (mm)
		Max	Min				Gusting	Avg					
23-12-24 (Monday)	0001	29	19	26	1013	N	18	13	1.0	3	75	12	0.0
	0600			24	1014	N	15	9	0.9	3	79	10	0.0
	1200			25	1011	NNE	11	3	0.9	3	55	10	0.0
	1800			26	1012	NNW	13	10	0.9	3	69	11	0.0
24-12-24 (Tuesday)	0001	29	21	26	1013	NNW	17	13	1.0	3	74	14	0.0
	0600			24	1015	N	17	11	1.0	3	75	12	0.0
	1200			26	1012	N	9	7	0.9	3	54	13	0.0
	1800			25	1013	NW	15	10	0.9	3	66	15	0.0
25-12-24 (Wednesday)	0001	27	20	26	1014	NNW	15	11	0.9	3	79	12	0.0
	0600			24	1015	N	26	19	1.2	3	69	10	0.0
	1200			25	1012	NNW	22	16	1.1	3	69	10	0.0
	1800			26	1013	NNW	25	15	1.1	3	57	12	0.0
26-12-24 (Thursday)	0001	30	19	26	1014	E	20	15	1.0	3	65	12	0.0
	0600			24	1016	ENE	20	14	0.9	3	72	20	0.0
	1200			26	1013	E	19	12	0.9	3	61	24	0.0
	1800			25	1014	NE	17	15	1.0	3	71	10	0.0

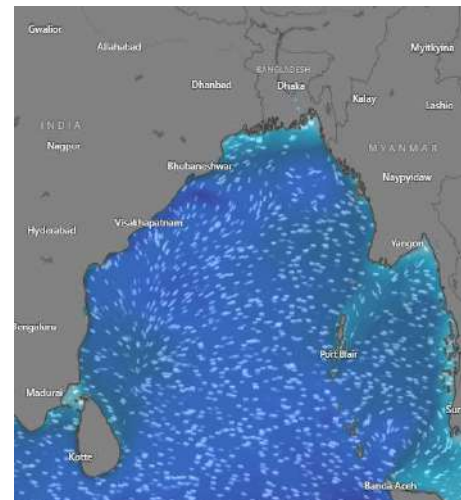
23 Dec 2024



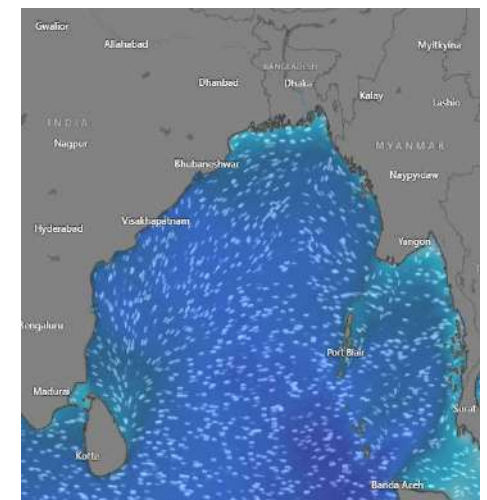
24 Dec 2024



25 Dec 2024



26 Dec 2024



Significant wave height (m)

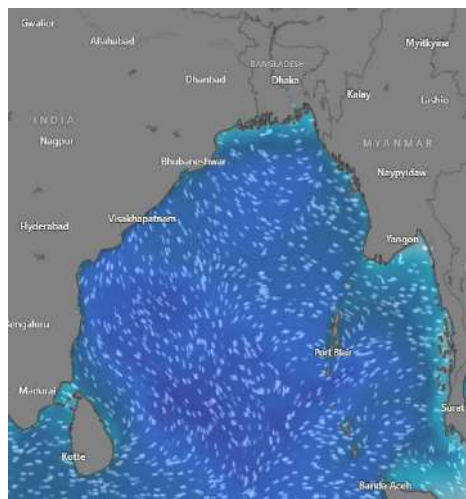


MARINE WEATHER FORECAST (23 to 30 Dec 2024) ABEAM TO ST. MARTIN'S LIGHT HOUSE (20° 37' N, 092° 08' E)

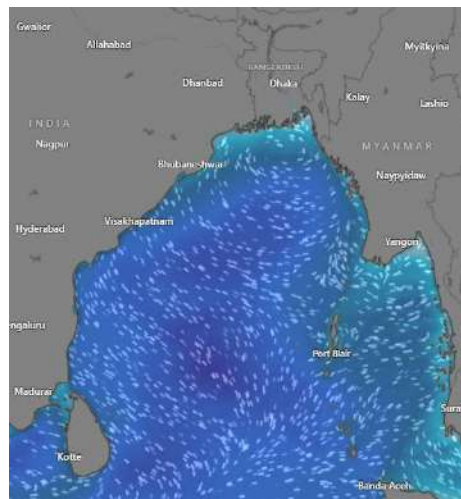


Date	Time	Air Temp (°C)		Sea Surface Temp (°C)	Baro Pressure (mbar)	Wind Direction	Wind Spd (kts)		Wave Ht (m)	Sea State	Humidity (%)	Prob of Rain (%)	Amount of Rain (mm)
		Max	Min				Gusting	Avg					
27-12-24 (Friday)	0001	29	18	26	1016	NE	19	12	0.9	3	75	12	0.0
	0600			25	1015	NNE	18	11	0.9	3	79	14	0.0
	1200			26	1014	NW	17	11	0.9	3	55	15	0.0
	1800			25	1016	WNW	17	13	1.0	3	72	10	0.0
28-12-24 (Saturday)	0001	28	18	26	1015	NE	18	13	0.9	3	73	12	0.0
	0600			25	1016	NNE	17	12	0.9	3	79	15	0.0
	1200			26	1012	NW	17	12	1.0	3	59	12	0.0
	1800			26	1015	NE	19	17	0.9	3	76	13	0.0
29-12-24 (Sunday)	0001	28	19	26	1015	NE	16	14	1.1	3	79	12	0.0
	0600			26	1013	NNE	16	14	1.0	3	81	13	0.0
	1200			26	1014	NW	13	12	1.0	3	56	12	0.0
	1800			25	1015	NE	13	9	1.1	3	69	11	0.0
30-12-24 (Monday)	0001	28	19	26	1014	NE	13	10	1.1	3	70	12	0.0
	0600			24	1014	NNE	13	10	1.0	3	72	13	0.0
	1200			26	1011	NW	14	7	1.0	3	61	12	0.0
	1800			25	1012	NE	12	9	1.1	3	71	11	0.0

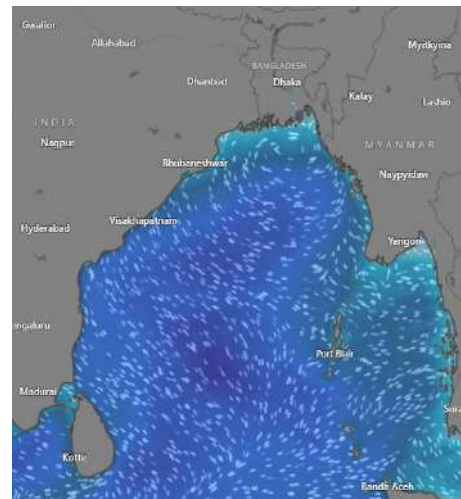
27 Dec 2024



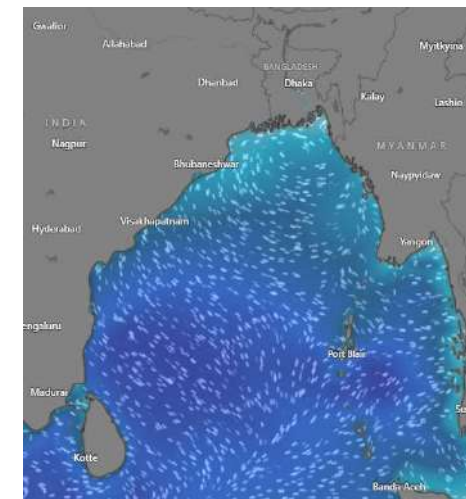
28 Dec 2024



29 Dec 2024



30 Dec 2024



Significant wave height (m)



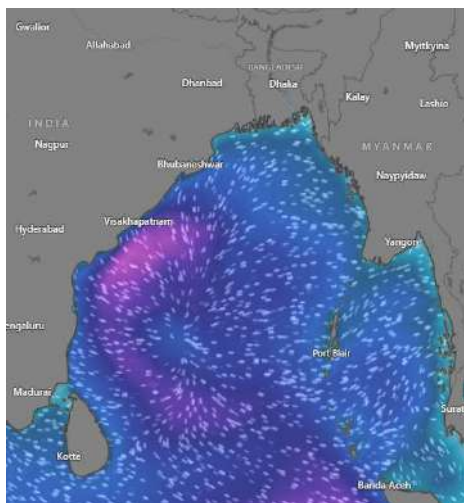
MARINE WEATHER FORECAST (23 to 30 Dec 2024)

PAYRA FAIRWAY (21° 22' N, 090° 6' E)

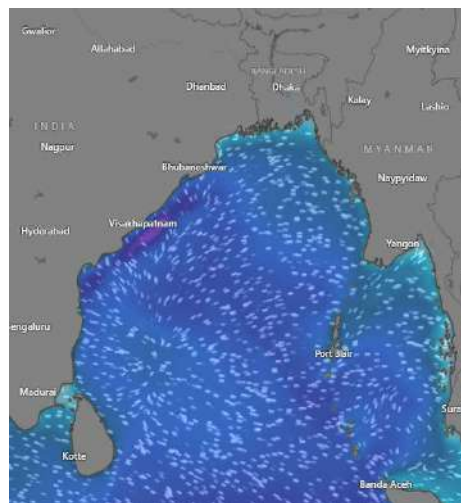


Date	Time	Air Temp (°C)		Sea Surface Temp (°C)	Baro Pressure (mbar)	Wind Direction	Wind Spd (kts)		Wave Ht (m)	Sea State	Humidity (%)	Prob of Rain (%)	Amount of Rain (mm)
		Max	Min				Gusting	Avg					
23-12-24 (Monday)	0001	27	17	24	1013	N	17	13	0.9	3	80	12	0.0
	0600			23	1016	NNE	19	12	0.9	3	84	10	0.0
	1200			24	1012	N	16	10	0.9	3	51	10	0.0
	1800			23	1013	N	11	6	0.8	3	66	12	0.0
24-12-24 (Tuesday)	0001	26	19	24	1013	N	12	9	0.8	3	78	10	0.0
	0600			24	1016	N	16	12	0.8	3	81	12	0.0
	1200			23	1013	N	15	9	0.8	3	52	10	0.0
	1800			24	1014	NNW	5	3	0.8	3	66	10	0.0
25-12-24 (Wednesday)	0001	26	18	24	1014	NNW	22	17	0.8	3	77	12	0.0
	0600			24	1016	N	18	10	0.8	3	79	10	0.0
	1200			23	1014	N	10	5	0.7	3	59	12	0.0
	1800			24	1015	N	7	4	0.6	3	70	10	0.0
26-12-24 (Thursday)	0001	28	18	24	1013	NE	11	8	0.6	3	77	10	0.0
	0600			23	1016	NNE	16	12	0.7	3	80	12	0.0
	1200			24	1013	NW	14	9	0.7	3	56	24	0.0
	1800			23	1014	NE	16	9	0.7	3	67	10	0.0

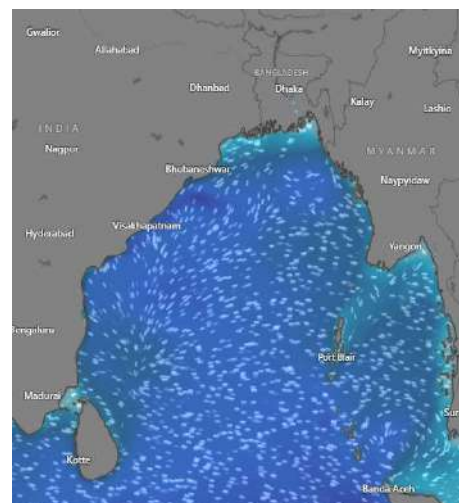
23 Dec 2024



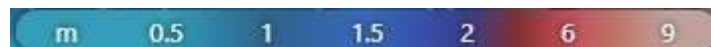
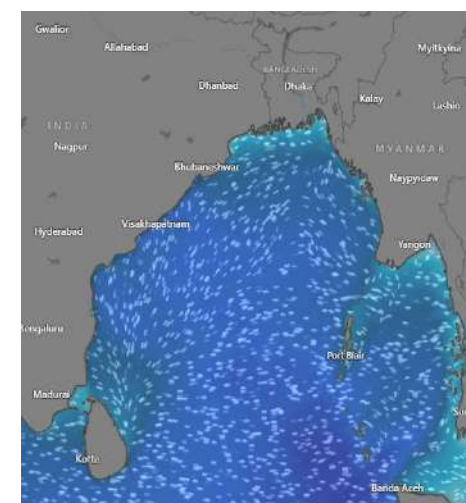
24 Dec 2024



25 Dec 2024



26 Dec 2024



Significant wave height (m)



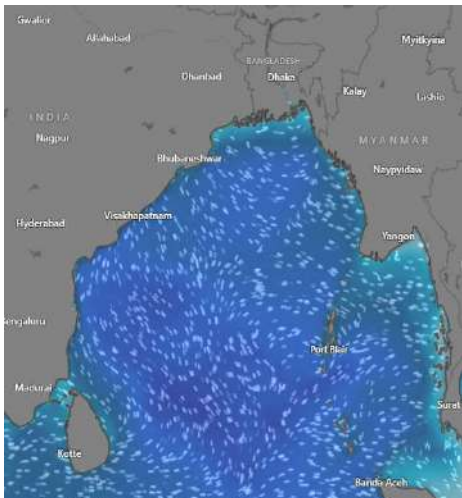
MARINE WEATHER FORECAST (23 to 30 Dec 2024)

PAYRA FAIRWAY (21° 22' N, 090° 6' E)

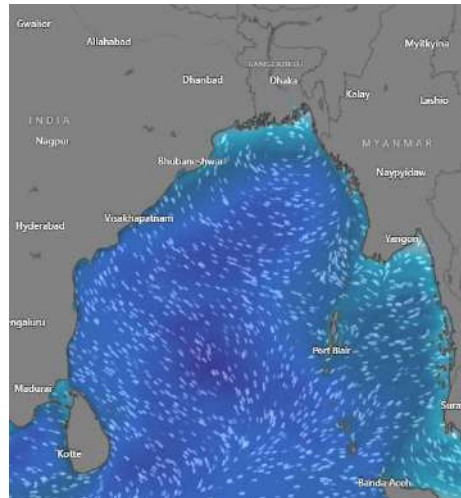


Date	Time	Air Temp (°C)		Sea Surface Temp (°C)	Baro Pressure (mbar)	Wind Direction	Wind Spd (kts)		Wave Ht (m)	Sea State	Humidity (%)	Prob of Rain (%)	Amount of Rain (mm)
		Max	Min				Gusting	Avg					
27-12-24 (Friday)	0001	28	16	24	1016	NE	12	8	0.7	3	80	12	0.0
	0600			23	1018	NNE	17	13	0.8	3	84	20	0.0
	1200			24	1014	NW	16	9	0.8	3	61	24	0.0
	1800			24	1015	WNW	12	10	0.7	3	71	10	0.0
28-12-24 (Saturday)	0001	27	16	25	1015	NE	15	11	0.7	3	79	12	0.0
	0600			24	1017	NNE	17	11	0.8	3	84	12	0.0
	1200			25	1013	NW	12	7	0.7	3	50	13	0.0
	1800			24	1015	NE	13	10	0.8	3	66	12	0.0
29-12-24 (Sunday)	0001	27	18	25	1015	NE	22	14	1.2	3	77	12	0.0
	0600			24	1016	NNE	23	16	1.0	3	76	10	0.0
	1200			23	1013	NW	15	15	0.9	3	54	12	0.0
	1800			24	1015	NE	14	14	0.9	3	68	11	0.0
30-12-24 (Monday)	0001	27	17	24	1014	NE	18	12	1.2	3	77	12	0.0
	0600			23	1016	NNE	20	14	1.0	3	80	10	0.0
	1200			24	1013	NW	19	16	0.9	3	56	12	0.0
	1800			23	1016	NE	16	12	0.9	3	67	11	0.0

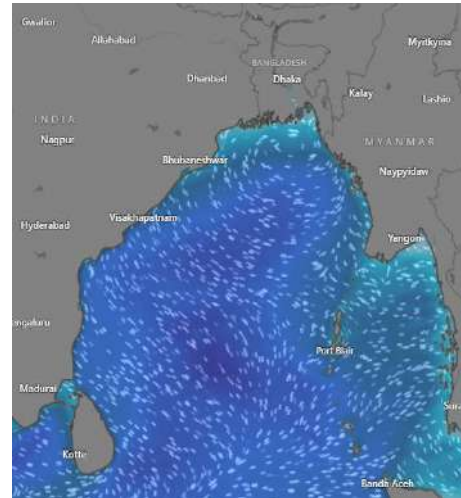
27 Dec 2024



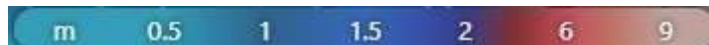
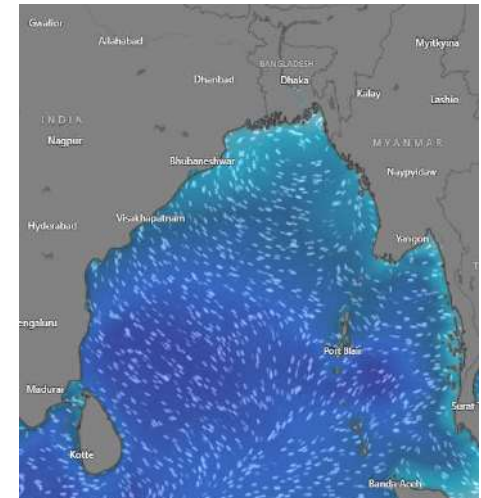
28 Dec 2024



29 Dec 2024



30 Dec 2024



Significant wave height (m)



MARINE WEATHER FORECAST (23 to 30 Dec 2024)

MONGLA FAIRWAY (21° 26' N, 089° 34' E)



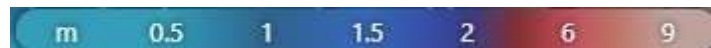
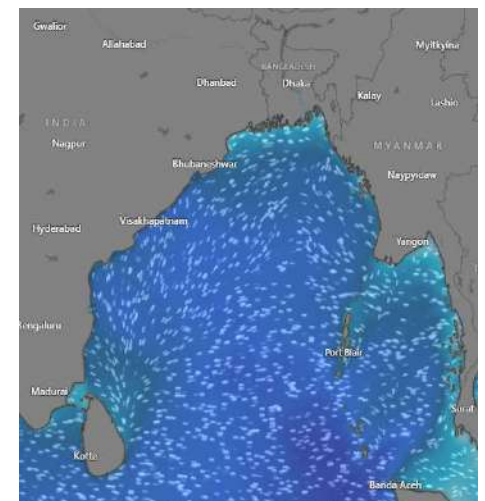
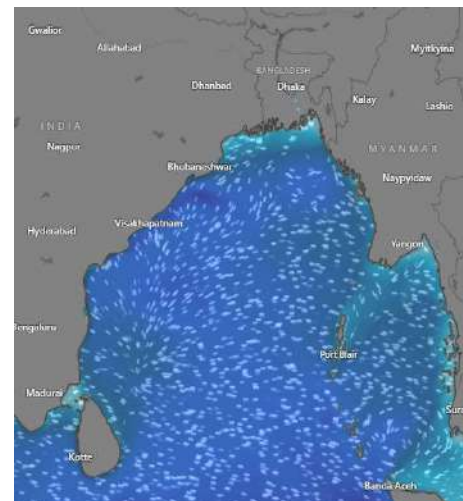
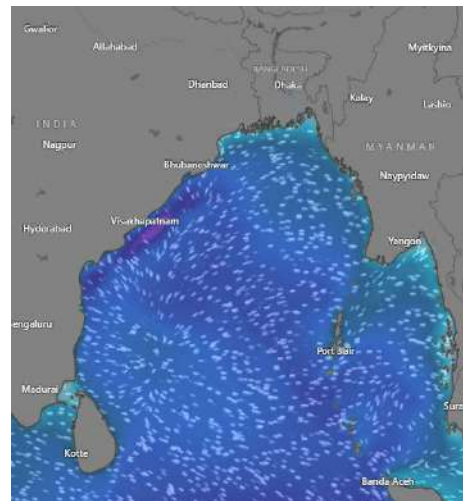
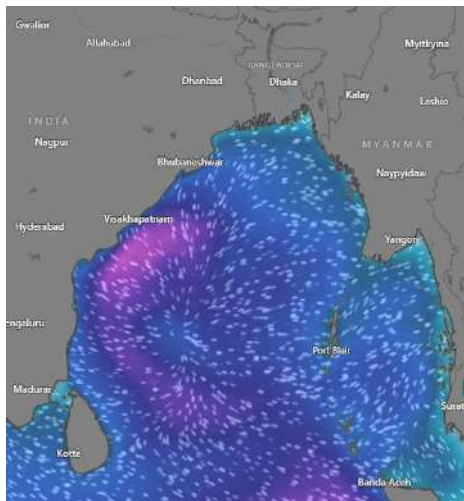
Date	Time	Air Temp (°C)		Sea Surface Temp (°C)	Baro Pressure (mbar)	Wind Direction	Wind Spd (kts)		Wave Ht (m)	Sea State	Humidity (%)	Prob of Rain (%)	Amount of Rain (mm)
		Max	Min				Gusting	Avg					
23-12-24 (Monday)	0001	27	16	24	1013	NNE	17	13	0.9	3	80	10	0.0
	0600			23	1016	NNE	18	12	1.0	3	84	14	0.0
	1200			25	1012	NNE	15	11	0.9	3	46	11	0.0
	1800			24	1013	ESE	10	6	0.9	3	60	12	0.0
24-12-24 (Tuesday)	0001	27	18	24	1013	NNE	13	9	0.9	3	80	10	0.0
	0600			23	1016	NNE	15	11	0.9	3	84	14	0.0
	1200			25	1012	N	14	8	0.9	3	48	11	0.0
	1800			24	1013	W	6	4	0.8	3	61	12	0.0
25-12-24 (Wednesday)	0001	26	16	24	1015	N	17	8	0.8	3	79	10	0.0
	0600			24	1016	NNW	12	8	0.8	3	82	14	0.0
	1200			23	1015	N	9	5	0.8	3	50	11	0.0
	1800			24	1017	NE	6	3	0.7	3	63	12	0.0
26-12-24 (Thursday)	0001	28	16	24	1015	NE	8	6	0.7	3	81	24	0.0
	0600			23	1018	NNE	15	10	0.7	3	87	24	0.0
	1200			25	1015	NW	13	7	0.7	3	55	15	0.0
	1800			24	1017	NE	12	10	0.7	3	62	10	0.0

23 Dec 2024

24 Dec 2024

25 Dec 2024

26 Dec 2024



Significant wave height (m)



MARINE WEATHER FORECAST (23 to 30 Dec 2024)

MONGLA FAIRWAY (21° 26' N, 089° 34' E)



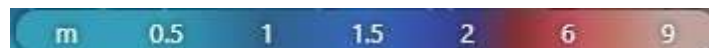
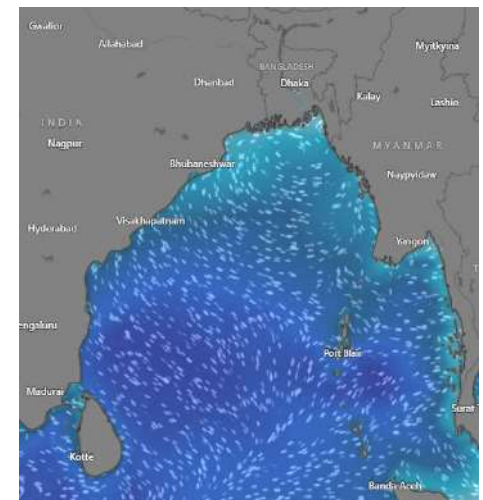
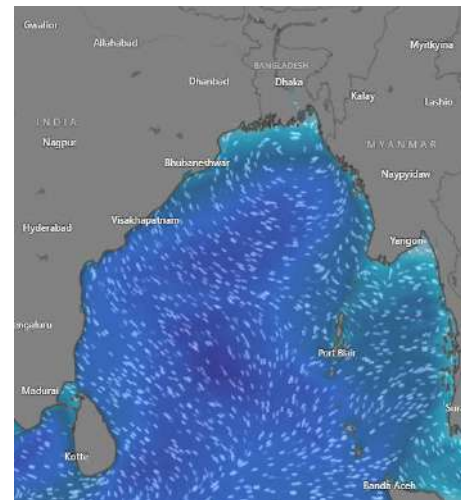
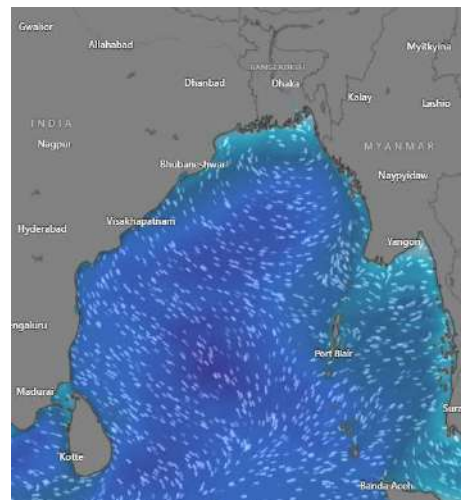
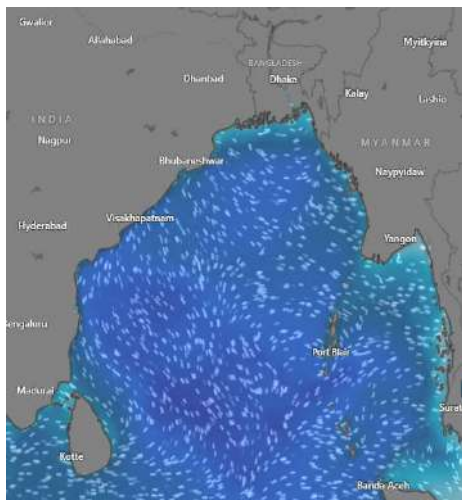
Date	Time	Air Temp (°C)		Sea Surface Temp (°C)	Baro Pressure (mbar)	Wind Direction	Wind Spd (kts)		Wave Ht (m)	Sea State	Humidity (%)	Prob of Rain (%)	Amount of Rain (mm)
		Max	Min				Gusting	Avg					
27-12-24 (Friday)	0001	28	15	25	1017	NE	10	7	0.7	3	83	13	0.0
	0600			24	1018	NNE	15	11	0.8	3	89	14	0.0
	1200			25	1015	NW	15	9	0.8	3	57	24	0.0
	1800			24	1016	WNW	7	6	0.7	3	66	24	0.0
28-12-24 (Saturday)	0001	27	16	24	1015	NE	12	9	0.7	3	83	24	0.0
	0600			23	1017	NNE	16	11	0.8	3	88	24	0.0
	1200			25	1014	NW	12	7	0.7	3	46	10	0.0
	1800			24	1016	NE	13	10	0.7	3	60	9	0.0
29-12-24 (Sunday)	0001	27	17	25	1015	NE	20	16	1.0	3	82	12	0.0
	0600			24	1016	NNE	18	12	1.0	3	87	10	0.0
	1200			25	1013	NW	18	11	0.8	3	55	12	0.0
	1800			24	1014	NE	16	4	0.9	3	66	11	0.0
30-12-24 (Monday)	0001	27	16	24	1015	NE	18	13	1.0	3	81	12	0.0
	0600			23	1016	NNE	18	12	1.0	3	87	10	0.0
	1200			25	1012	NW	18	11	0.8	3	55	12	0.0
	1800			24	1015	NE	16	4	0.9	3	62	11	0.0

27 Dec 2024

28 Dec 2024

29 Dec 2024

30 Dec 2024



Significant wave height (m)



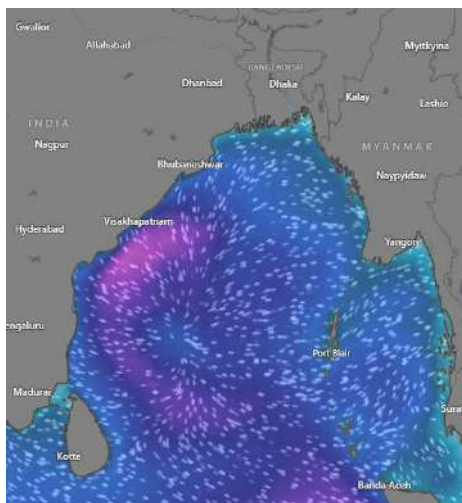
MARINE WEATHER FORECAST (23 to 30 Dec 2024)

OUTER EEZ (18° 48' N, 090° 30' E)

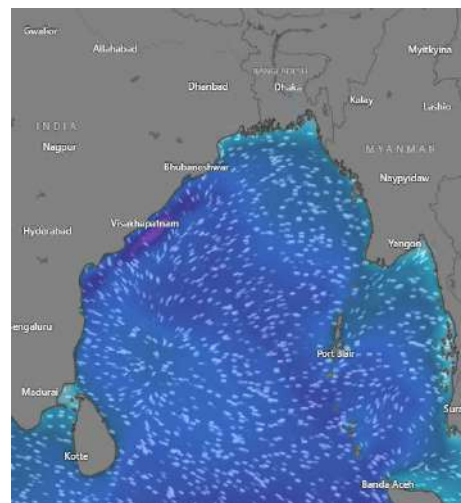


Date	Time	Air Temp (°C)		Sea Surface Temp (°C)	Baro Pressure (mbar)	Wind Direction	Wind Spd (kts)		Wave Ht (m)	Sea State	Humidity (%)	Prob of Rain (%)	Amount of Rain (mm)
		Max	Min				Gusting	Avg					
23-12-24 (Monday)	0001	29	19	25	1013	NNE	19	12	1.4	4	75	12	0.0
	0600			26	1015	NE	16	12	1.4	4	79	10	0.0
	1200			26	1012	NE	19	13	1.4	4	55	10	0.0
	1800			25	1014	NNE	13	8	1.3	4	69	11	0.0
24-12-24 (Tuesday)	0001	29	21	25	1013	NNE	11	8	1.2	3	74	14	0.0
	0600			26	1015	NNE	12	9	1.2	3	75	12	0.0
	1200			26	1013	NNE	14	10	1.2	3	54	13	0.0
	1800			25	1015	N	14	10	1.2	3	66	15	0.0
25-12-24 (Wednesday)	0001	27	20	26	1014	N	12	6	1.2	3	79	12	0.0
	0600			25	1017	N	17	13	1.2	3	69	10	0.0
	1200			26	1014	NW	20	14	1.3	4	69	10	0.0
	1800			25	1016	NW	21	16	1.4	4	57	12	0.0
26-12-24 (Thursday)	0001	30	19	25	1014	NE	19	12	1.4	4	65	12	0.0
	0600			26	1017	NNE	16	11	1.2	3	72	20	0.0
	1200			25	1014	NW	17	13	1.2	3	61	24	0.0
	1800			24	1015	NE	18	13	1.2	3	71	10	0.0

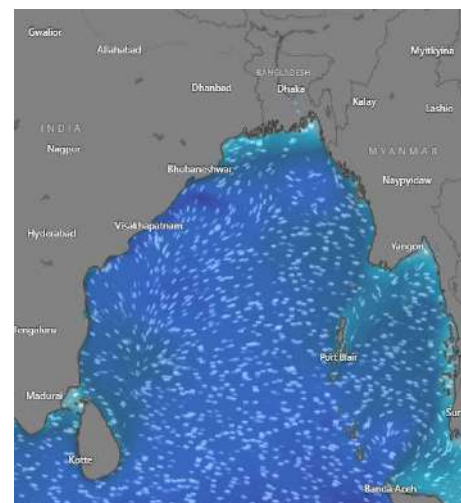
23 Dec 2024



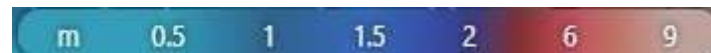
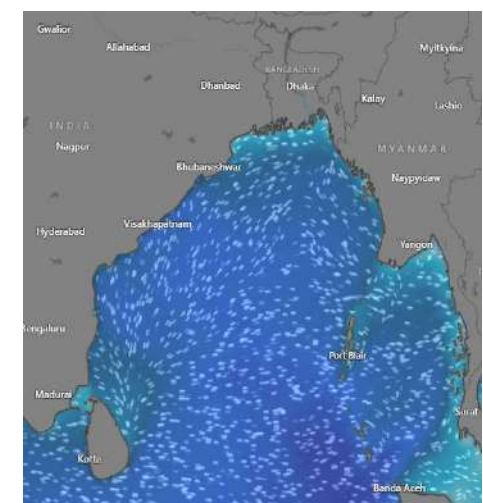
24 Dec 2024



25 Dec 2024



26 Dec 2024



Significant wave height (m)



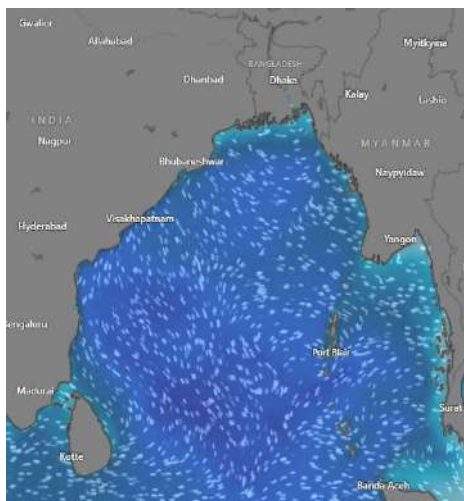
MARINE WEATHER FORECAST (23 to 30 Dec 2024)

OUTER EEZ (18° 48' N, 090° 30' E)

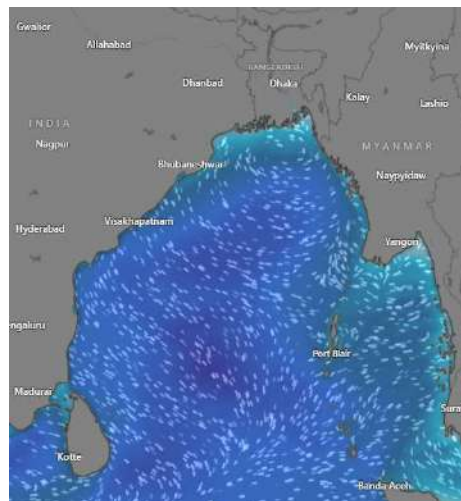


Date	Time	Air Temp (°C)		Sea Surface Temp (°C)	Baro Pressure (mbar)	Wind Direction	Wind Spd (kts)		Wave Ht (m)	Sea State	Humidity (%)	Prob of Rain (%)	Amount of Rain (mm)
		Max	Min				Gusting	Avg					
27-12-24 (Friday)	0001	29	18	26	1015	NE	15	10	1.2	3	89	12	0.0
	0600			25	1018	NNE	17	12	1.2	3	91	20	0.0
	1200			26	1014	NW	16	11	1.2	3	82	24	0.0
	1800			26	1015	WNW	16	12	1.2	3	83	10	0.0
28-12-24 (Saturday)	0001	28	18	26	1015	NE	15	11	1.2	3	92	24	0.0
	0600			26	1016	NNE	16	12	1.2	3	93	10	0.0
	1200			26	1013	NW	16	11	1.2	3	66	9	0.0
	1800			26	1015	NE	17	12	1.2	3	77	9	0.0
29-12-24 (Sunday)	0001	28	19	26	1015	NE	19	11	1.2	3	84	12	0.0
	0600			25	1016	NNE	21	14	1.2	3	88	10	0.0
	1200			27	1012	NW	21	11	1.2	3	61	12	0.0
	1800			26	1014	NE	18	12	1.2	3	65	11	0.0
30-12-24 (Monday)	0001	28	19	26	1014	NE	19	12	1.2	3	87	12	0.0
	0600			25	1016	NNE	21	12	1.2	3	89	10	0.0
	1200			26	1012	NW	21	11	1.2	3	55	12	0.0
	1800			26	1013	NE	18	12	1.2	3	64	11	0.0

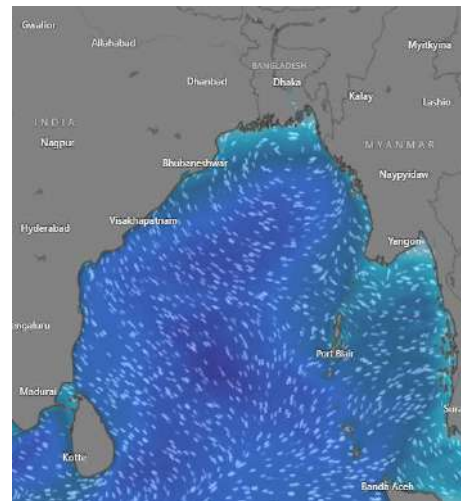
27 Dec 2024



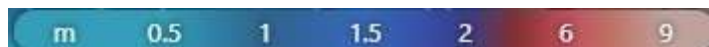
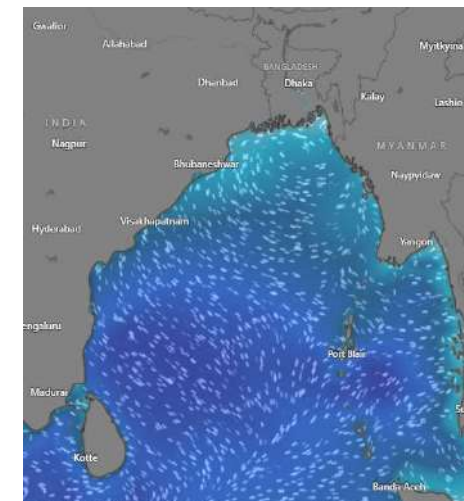
28 Dec 2024



29 Dec 2024



30 Dec 2024



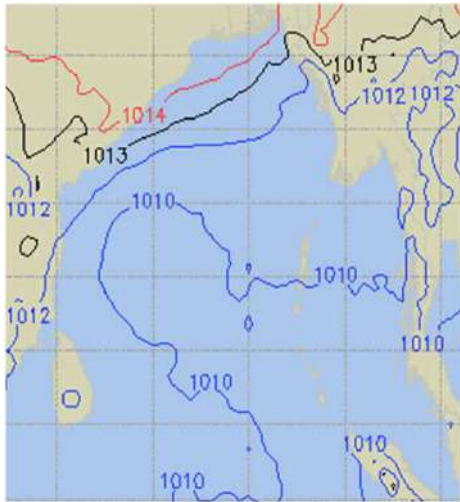
Significant wave height (m)



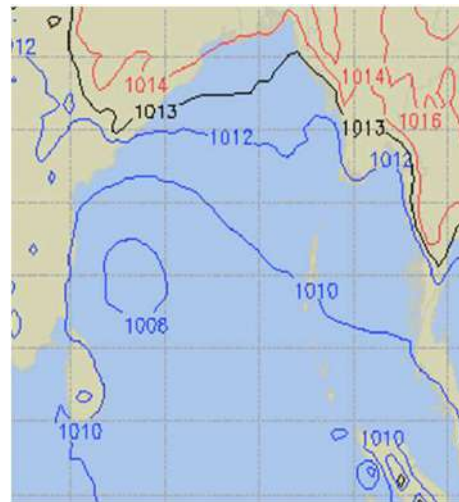
PREDICTED SURFACE PRESSURE FORECAST (23 to 29 Dec 2024)



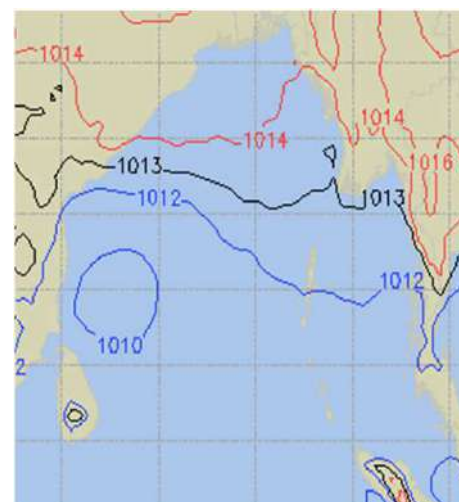
23 Dec 2024



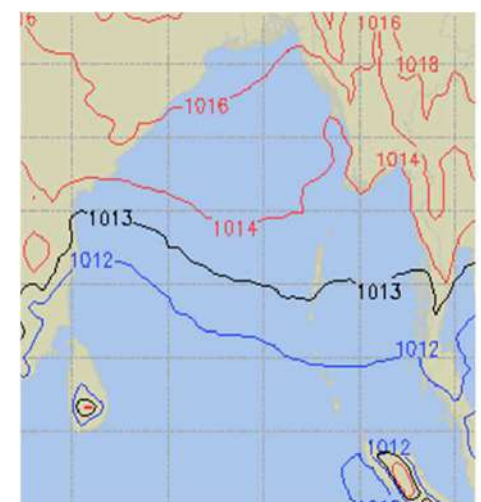
24 Dec 2024



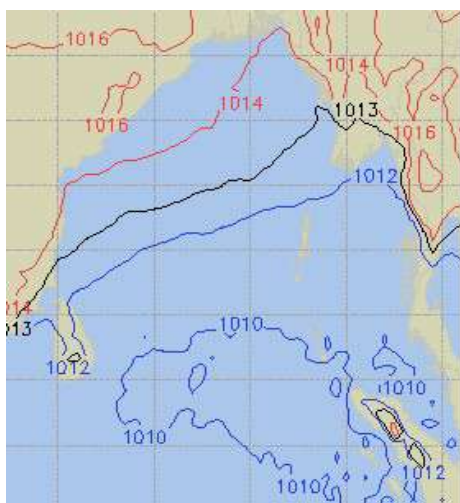
25 Dec 2024



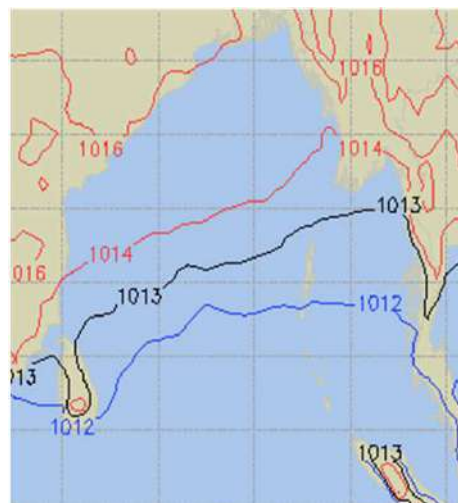
26 Dec 2024



27 Dec 2024



28 Dec 2024



29 Dec 2024

