



**SUMMARY OF MARINE WEATHER FORECAST**  
**COASTAL AREA OF BANGLADESH**  
**DATE: 23 to 30 April 2026**



Fleet Forecast	The trough of low lies over North Bay of Bengal.
Wind Direction, Speed	South-West/Southerly 10-15 kts, temporary gusting to 25 kts.
Wave Height & Sea State	Ctg Outer Anchorage: 0.3 to 0.9 m (Sea state: 2 to 3) Abeam to Cox's Bazar: 0.9 to 1.8 m (Sea state: 3 to 4) St. Martin's Island: 0.9 to 1.7 m (Sea state 3 to 4) Payra Fairway Buoy: 1.1 to 2.3 m (Sea state: 3 to 4) Mongla Fairway Buoy: 1.1 to 2.4 m (Sea state: 3 to 4) Outer EEZ: 1.2 to 2.0 m (Sea state: 3 to 4)
Sea Surface Temperature	26° C - 30° C
Baro Pressure	1005-1009 mb
Rainfall	Partly cloudy to cloudy sky rain/thunder showers with gusty wind is likely to occur over Bay of Bengal and adjoining area.
Fog & Visibility	Hazy condition over the Bay of Bengal & coastal area, Visibility 1.5 – 5.0 km

**Marine Weather Outlook (23 to 30 April 2026):**

- Partly cloudy to cloudy sky rain/thunder showers with gusty wind is likely to occur over Bay of Bengal and adjoining area.
- Hazy condition over the Bay of Bengal & coastal area during early morning.
- Rain/thunder showers activity may increase.

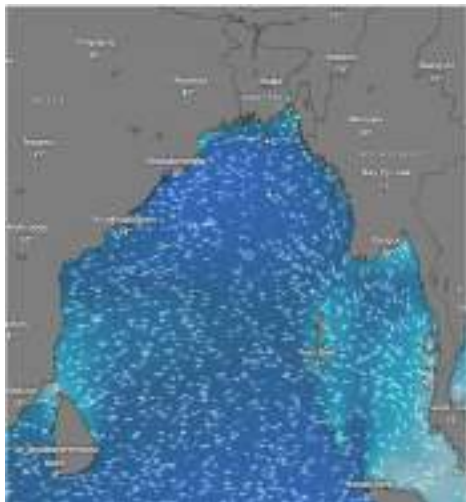


## MARINE WEATHER FORECAST (23 to 30 April 2026) PATENGA POINT (22° 12' N, 091° 38' E)

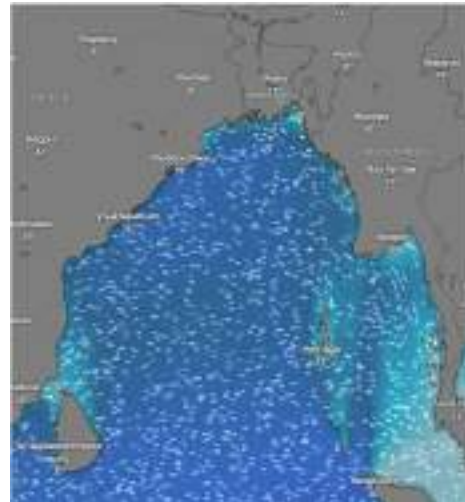


Date	Time	Air Temp (°C)		Sea Surface Temp (°C)	Baro Pressure (mbar)	Wind Direction	Wind Spd (kts)		Wave Ht (m)	Sea State	Humidity (%)	Prob of Rain (%)	Amount of Rain (mm)
		Max	Min				Gusting	Avg					
23-04-26 (Thursday)	0001	32	26	28	1007	SSE	12	07	0.3	2	86	10	0.0
	0600			27	1008	SSE	10	06	0.3	2	89	13	0.0
	1200			30	1007	SSW	14	08	0.3	2	73	08	0.0
	1800			29	1006	SSW	13	06	0.3	2	82	10	0.0
24-04-26 (Friday)	0001	32	26	28	1008	SSW	12	08	0.3	2	89	08	0.0
	0600			27	1009	SSE	11	06	0.3	2	91	11	0.0
	1200			30	1007	SSW	14	08	0.3	2	72	06	0.0
	1800			29	1006	SSW	11	06	0.3	2	81	09	0.0
25-04-26 (Saturday)	0001	32	26	28	1010	SSW	11	07	0.3	2	87	08	0.0
	0600			27	1011	S	10	06	0.3	2	89	10	0.0
	1200			30	1009	SSW	11	07	0.3	2	72	07	0.0
	1800			28	1008	SW	09	05	0.3	2	83	08	0.0
26-04-26 (Sunday)	0001	32	26	28	1008	SSW	12	07	0.4	2	89	09	0.0
	0600			27	1009	SSE	15	09	0.5	3	90	12	0.0
	1200			30	1007	SSW	17	12	0.6	3	73	08	0.0
	1800			28	1006	SSW	20	14	0.6	3	85	15	0.0

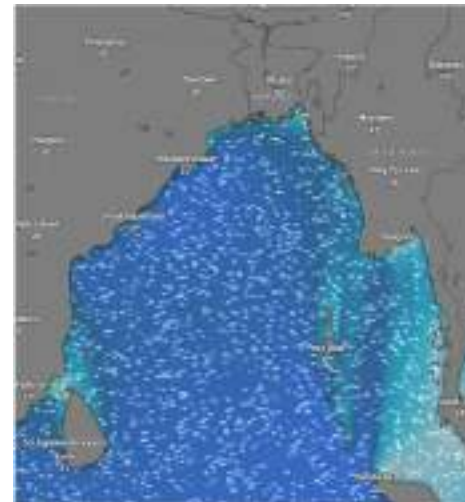
23 Apr 2026



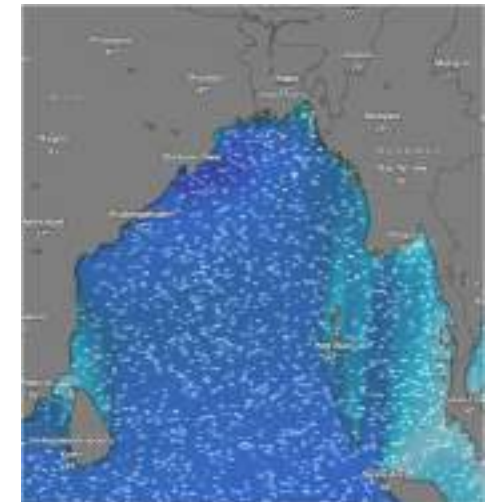
24 Apr 2026



25 Apr 2026



26 Apr 2026



Significant wave height (m)



# MARINE WEATHER FORECAST (23 to 30 April 2026)

## PATENGA POINT (22° 12' N, 091° 38' E)



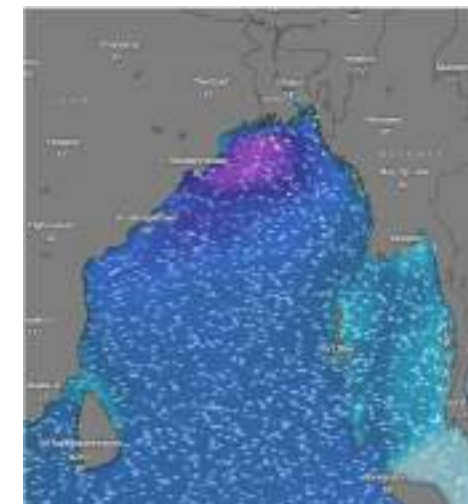
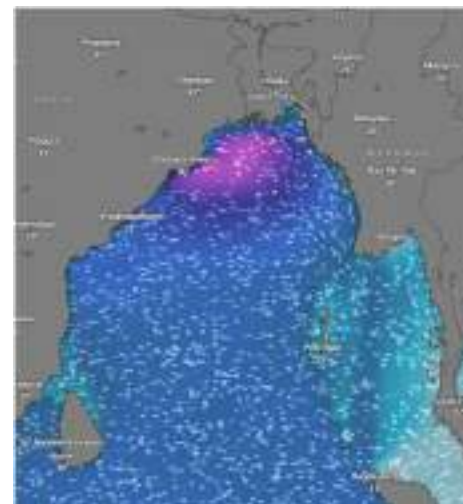
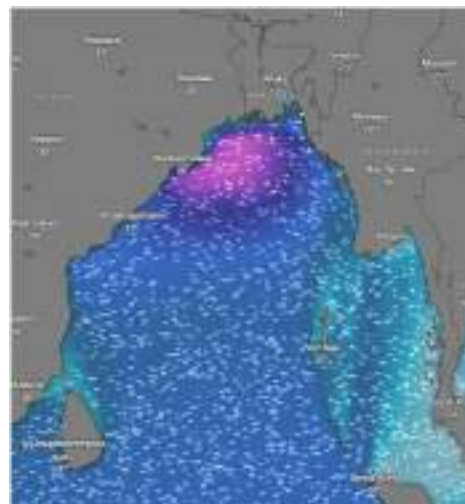
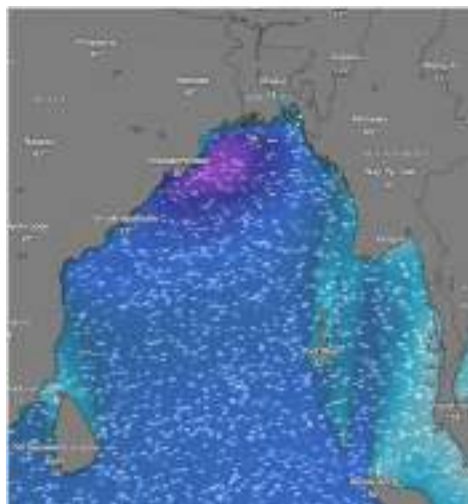
Date	Time	Air Temp (°C)		Sea Surface Temp (°C)	Baro Pressure (mbar)	Wind Direction	Wind Spd (kts)		Wave Ht (m)	Sea State	Humidity (%)	Prob of Rain (%)	Amount of Rain (mm)
		Max	Min				Gusting	Avg					
27-04-26 (Monday)	0001	32	25	28	1007	S	14	10	0.5	3	88	09	0.0
	0600			27	1008	SSE	13	09	0.6	3	89	12	0.0
	1200			30	1007	SSW	20	14	0.7	3	74	08	0.0
	1800			28	1006	SW	13	09	0.7	3	86	15	0.0
28-04-26 (Tuesday)	0001	32	25	28	1007	SSW	18	14	0.8	3	89	09	0.0
	0600			27	1008	S	14	10	0.8	3	90	12	0.0
	1200			30	1006	SSW	21	15	0.8	3	75	08	0.0
	1800			28	1005	SSW	17	12	0.7	3	87	15	0.0
29-04-26 (Wednesday)	0001	32	25	28	1007	S	21	15	0.8	3	89	08	0.0
	0600			27	1008	S	20	14	0.8	3	91	12	0.0
	1200			30	1006	SSW	26	19	0.6	3	76	05	0.0
	1800			28	1005	S	22	15	0.7	3	87	11	0.0
30-04-26 (Thursday)	0001	32	25	28	1007	S	18	13	0.8	3	88	09	0.0
	0600			27	1008	S	15	09	0.8	3	91	12	0.0
	1200			30	1006	SSW	18	12	0.9	3	78	07	0.0
	1800			28	1005	S	20	13	0.9	3	85	11	0.0

27 Apr 2026

28 Apr 2026

29 Apr 2026

30 Apr 2026



Significant wave height (m)



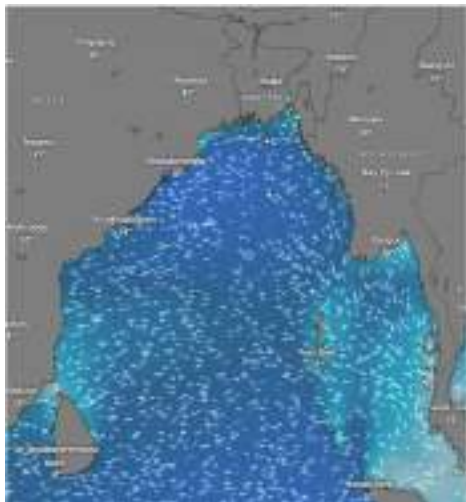
# MARINE WEATHER FORECAST (23 to 30 April 2026)

## ABEAM TO KUTUBDIA (21° 51' N, 091° 40' E)

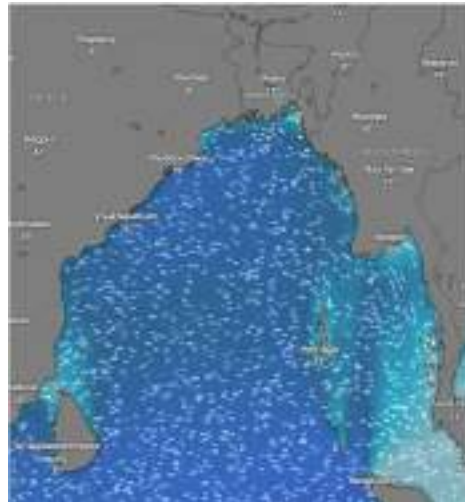


Date	Time	Air Temp (°C)		Sea Surface Temp (°C)	Baro Pressure (mbar)	Wind Direction	Wind Spd (kts)		Wave Ht (m)	Sea State	Humidity (%)	Prob of Rain (%)	Amount of Rain (mm)
		Max	Min				Gusting	Avg					
23-04-26 (Thursday)	0001	33	26	28	1007	S	14	10	0.6	3	89	10	0.0
	0600			27	1008	SSW	14	10	0.5	3	90	11	0.0
	1200			30	1007	SSW	12	09	0.5	3	74	13	0.0
	1800			29	1006	SW	11	07	0.5	3	85	11	0.0
24-04-26 (Friday)	0001	33	26	28	1008	SSW	12	08	0.4	2	88	08	0.0
	0600			27	1009	SSE	11	06	0.4	2	90	11	0.0
	1200			30	1007	SW	14	08	0.4	2	75	12	0.0
	1800			29	1006	SW	11	06	0.4	2	87	10	0.0
25-04-26 (Saturday)	0001	32	26	28	1010	SW	11	07	0.4	2	87	10	0.0
	0600			27	1011	SSW	10	06	0.4	2	89	15	0.0
	1200			30	1009	SSW	11	07	0.4	2	73	09	0.0
	1800			28	1008	SW	09	05	0.4	2	85	13	0.0
26-04-26 (Sunday)	0001	32	26	28	1008	SW	10	05	0.5	3	89	10	0.0
	0600			27	1009	S	13	08	0.6	3	90	15	0.0
	1200			30	1007	SSW	15	10	0.7	3	76	09	0.0
	1800			28	1006	SSW	15	10	0.8	3	85	13	0.0

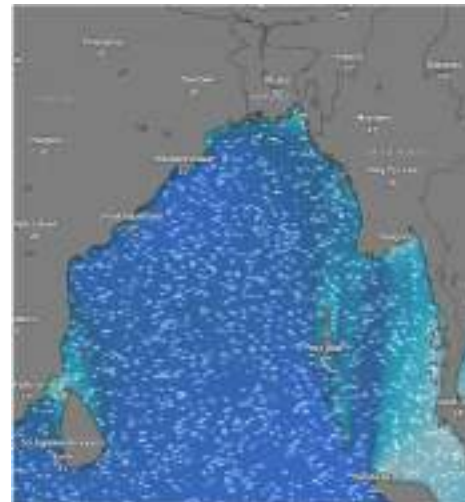
23 Apr 2026



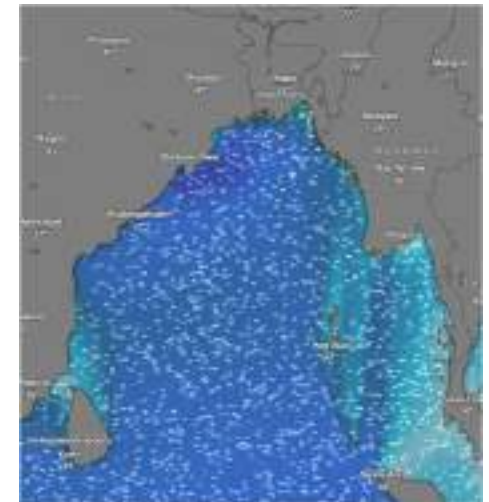
24 Apr 2026



25 Apr 2026



26 Apr 2026



Significant wave height (m)



## MARINE WEATHER FORECAST (23 to 30 April 2026) ABEAM TO KUTUBDIA (21° 51' N, 091° 40' E)



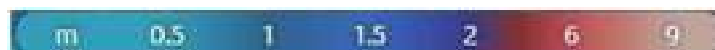
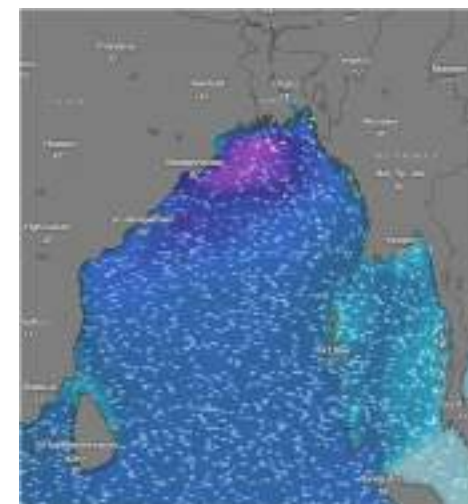
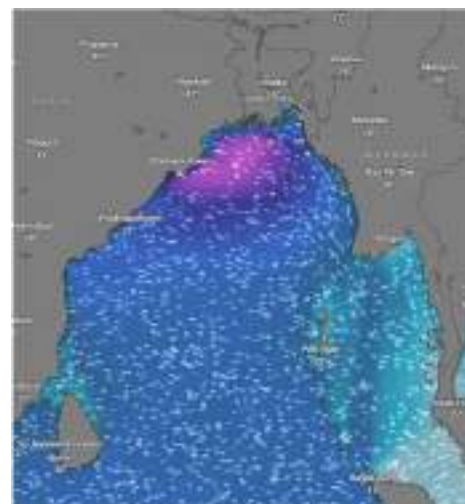
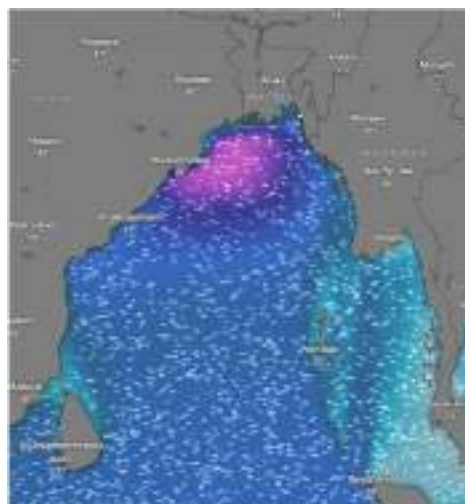
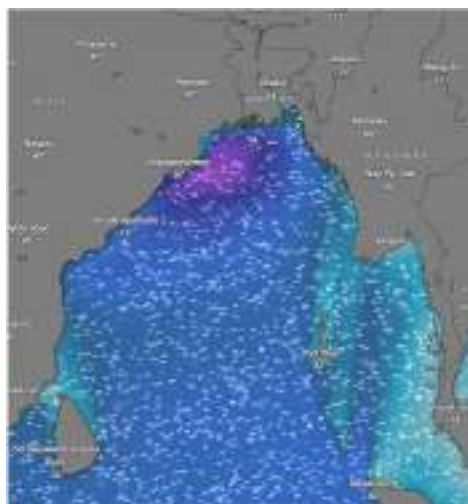
Date	Time	Air Temp (°C)		Sea Surface Temp (°C)	Baro Pressure (mbar)	Wind Direction	Wind Spd (kts)		Wave Ht (m)	Sea State	Humidity (%)	Prob of Rain (%)	Amount of Rain (mm)
		Max	Min				Gusting	Avg					
27-04-26 (Monday)	0001	31	25	28	1007	SW	17	13	0.6	3	87	10	0.0
	0600			27	1008	S	16	12	0.7	3	89	15	0.0
	1200			30	1007	SSW	18	14	0.7	3	75	09	0.0
	1800			28	1006	SSW	17	12	1.0	3	81	13	0.0
28-04-26 (Tuesday)	0001	31	25	28	1007	SSW	21	15	1.0	3	88	10	0.0
	0600			27	1008	S	20	14	1.0	3	90	15	0.0
	1200			30	1006	SSW	21	15	1.1	3	74	09	0.0
	1800			28	1005	SSW	20	14	1.0	3	86	13	0.0
29-04-26 (Wednesday)	0001	31	25	28	1007	SSW	22	16	1.0	3	89	09	0.0
	0600			27	1008	SSW	26	18	1.0	3	91	14	0.0
	1200			30	1006	SSW	27	19	0.9	3	75	06	0.0
	1800			28	1005	SSW	16	10	0.9	3	87	12	0.0
30-04-26 (Thursday)	0001	31	25	28	1007	SSW	18	13	0.8	3	89	09	0.0
	0600			27	1008	SSW	15	09	0.8	3	91	14	0.0
	1200			30	1006	SSW	18	12	0.9	3	75	06	0.0
	1800			28	1005	SSW	20	13	0.9	3	87	12	0.0

27 Apr 2026

28 Apr 2026

29 Apr 2026

30 Apr 2026



Significant wave height (m)



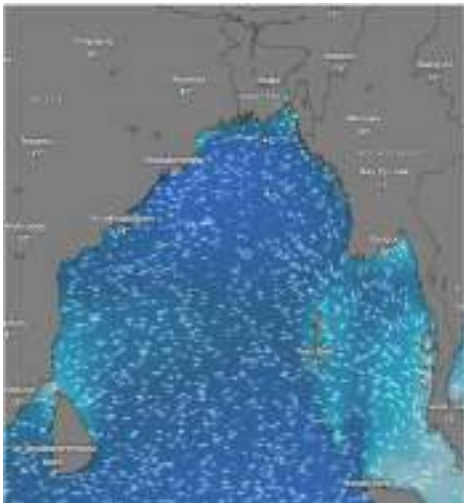
# MARINE WEATHER FORECAST (23 to 30 April 2026)

## ABEAM TO ELEPHANT POINT (21° 11' N, 091° 52' E)

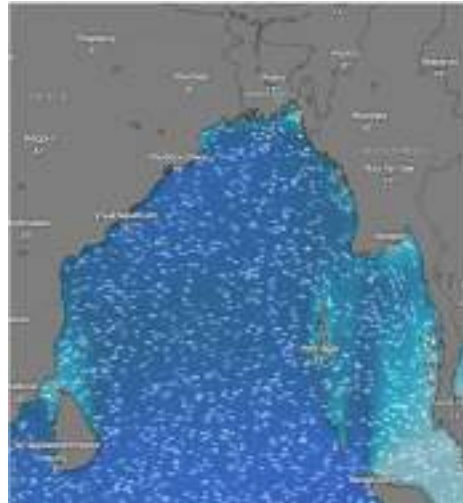


Date	Time	Air Temp (°C)		Sea Surface Temp (°C)	Baro Pressure (mbar)	Wind Direction	Wind Spd (kts)		Wave Ht (m)	Sea State	Humidity (%)	Prob of Rain (%)	Amount of Rain (mm)
		Max	Min				Gusting	Avg					
23-04-26 (Thursday)	0001	33	26	28	1007	SSW	11	07	1.1	3	88	10	0.0
	0600			27	1008	S	12	07	1.1	3	90	11	0.0
	1200			30	1007	SSW	13	08	1.0	3	75	12	0.0
	1800			29	1006	SW	10	06	1.0	3	83	10	0.0
24-04-26 (Friday)	0001	33	26	28	1008	SSW	12	08	1.0	3	89	06	0.0
	0600			27	1009	SW	09	05	0.9	3	90	07	0.0
	1200			30	1007	SSW	12	08	0.9	3	75	12	0.0
	1800			29	1006	SSW	13	08	1.0	3	86	10	0.0
25-04-26 (Saturday)	0001	32	26	28	1010	SW	14	09	1.0	3	88	09	0.0
	0600			27	1011	SSW	14	10	0.9	3	90	13	0.0
	1200			30	1009	SSW	16	12	1.0	3	73	06	0.0
	1800			28	1008	SW	16	12	1.0	3	86	15	0.0
26-04-26 (Sunday)	0001	32	26	29	1008	SSE	14	11	1.0	3	89	08	0.0
	0600			28	1009	SSE	14	10	1.0	3	90	09	0.0
	1200			30	1007	SE	12	11	1.1	3	72	07	0.0
	1800			29	1006	SE	15	12	1.2	3	83	06	0.0

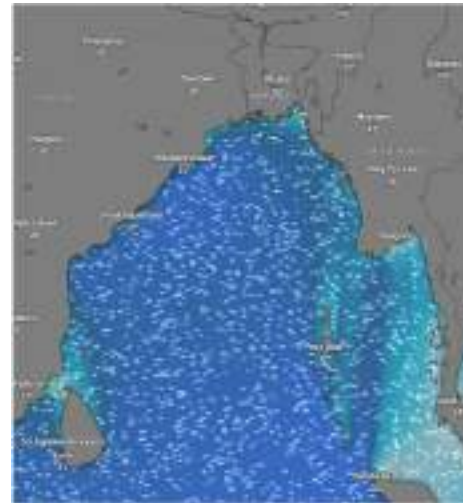
23 Apr 2026



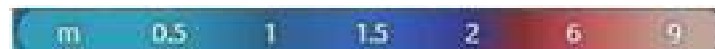
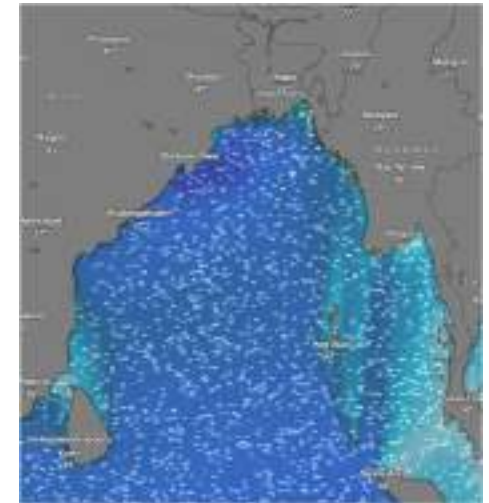
24 Apr 2026



25 Apr 2026



26 Apr 2026



Significant wave height (m)



# MARINE WEATHER FORECAST (23 to 30 April 2026)

## ABEAM TO ELEPHANT POINT (21° 11' N, 091° 52' E)



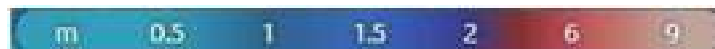
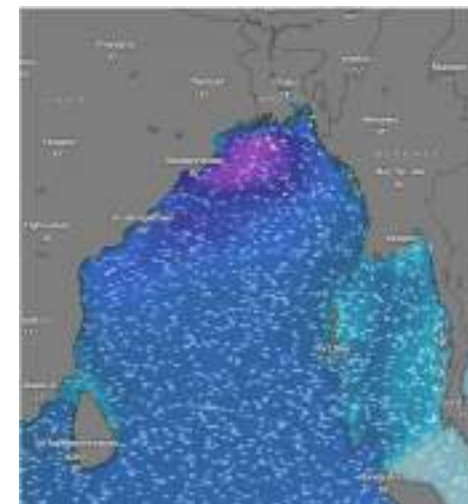
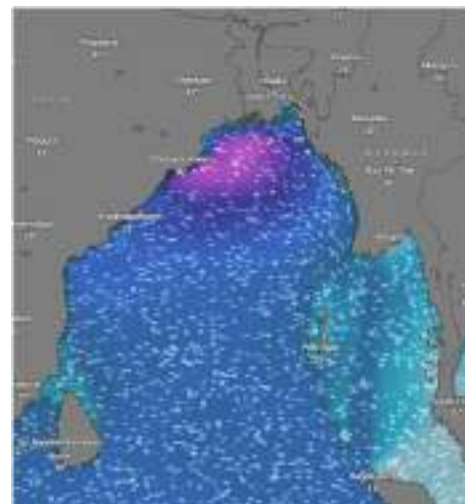
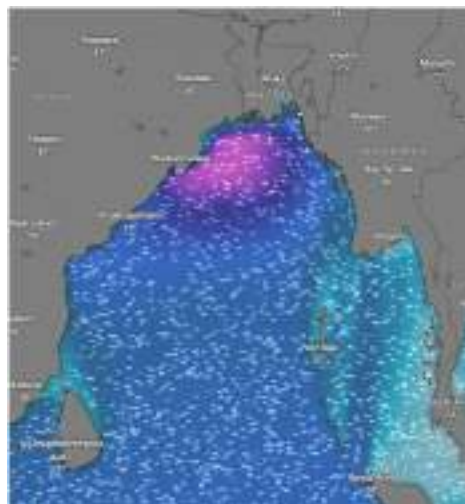
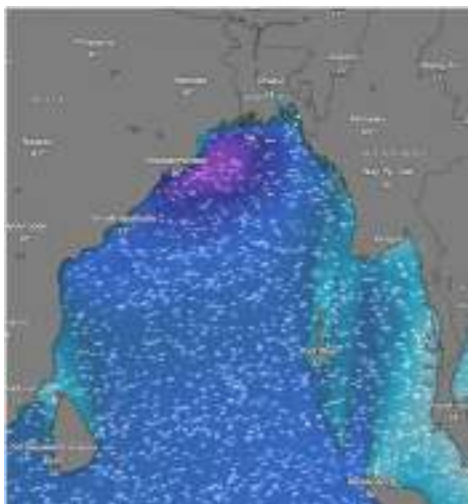
Date	Time	Air Temp (°C)		Sea Surface Temp (°C)	Baro Pressure (mbar)	Win Direction	Wind Spd (kts)		Wave Ht (m)	Sea State	Humidity (%)	Prob of Rain (%)	Amount of Rain (mm)
		Max	Min				Gusting	Avg					
27-04-26 (Monday)	0001	31	25	29	1007	SSW	11	07	1.2	3	89	08	0.0
	0600			28	1008	SSW	14	10	1.3	4	90	09	0.0
	1200			30	1007	SSW	15	11	1.4	4	72	07	0.0
	1800			29	1006	SSW	15	11	1.4	4	83	06	0.0
28-04-26 (Tuesday)	0001	31	25	29	1007	SSW	18	14	1.7	4	89	08	0.0
	0600			28	1008	S	17	13	1.7	4	90	09	0.0
	1200			30	1006	S	22	16	1.8	4	75	07	0.0
	1800			29	1005	SSW	21	15	1.8	4	87	06	0.0
29-04-26 (Wednesday)	0001	31	25	29	1007	SSW	18	14	1.8	4	89	09	0.0
	0600			28	1008	SSW	25	18	1.7	4	91	12	0.0
	1200			30	1006	SSW	22	16	1.7	4	76	05	0.0
	1800			29	1005	SSW	21	15	1.6	4	85	11	0.0
30-04-26 (Thursday)	0001	31	25	29	1007	SSW	17	13	1.5	4	88	10	0.0
	0600			28	1008	SW	14	09	1.4	4	90	11	0.0
	1200			30	1006	SSW	15	10	1.4	4	75	07	0.0
	1800			29	1005	SW	16	11	1.4	4	84	10	0.0

27 Apr 2026

28 Apr 2026

29 Apr 2026

30 Apr 2026



Significant wave height (m)



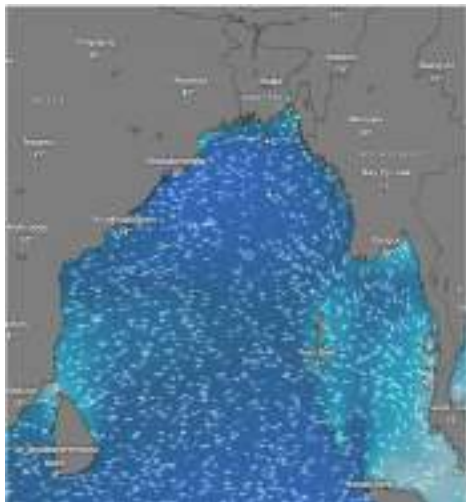
## MARINE WEATHER FORECAST (23 to 30 April 2026)

### ABEAM TO ST. MARTIN'S LIGHT HOUSE (20° 37'N, 092° 08'E)



Date	Time	AirTemp (°C)		Sea Surface Temp (°C)	Baro Pressure (mbar)	Wind Direction	Wind Spd (kts)		Wave Ht (m)	Sea State	Humidity (%)	Prob of Rain (%)	Amount of Rain (mm)
		Max	Min				Gusting	Avg					
23-04-26 (Thursday)	0001	33	26	28	1007	W	10	06	1.1	3	85	10	0.0
	0600			27	1008	SW	09	05	1.1	3	91	12	0.0
	1200			30	1007	SW	11	07	1.0	3	72	13	0.0
	1800			29	1006	W	13	09	1.0	3	85	14	0.0
24-04-26 (Friday)	0001	33	26	28	1008	SW	11	07	1.0	3	88	06	0.0
	0600			27	1009	S	12	08	0.9	3	89	07	0.0
	1200			30	1007	SSW	15	11	0.9	3	73	08	0.0
	1800			29	1006	W	16	12	0.9	3	85	09	0.0
25-04-26 (Saturday)	0001	32	26	28	1010	SE	11	08	0.9	3	87	10	0.0
	0600			27	1011	SSE	10	07	0.9	3	89	15	0.0
	1200			30	1009	SE	13	10	0.9	3	74	08	0.0
	1800			28	1008	SSE	14	10	0.9	3	85	12	0.0
26-04-26 (Sunday)	0001	32	26	28	1008	S	12	08	0.9	3	88	12	0.0
	0600			27	1009	SSE	11	08	0.9	3	89	17	0.0
	1200			30	1007	SE	10	09	1.0	3	77	09	0.0
	1800			28	1006	SSE	11	08	1.1	3	83	14	0.0

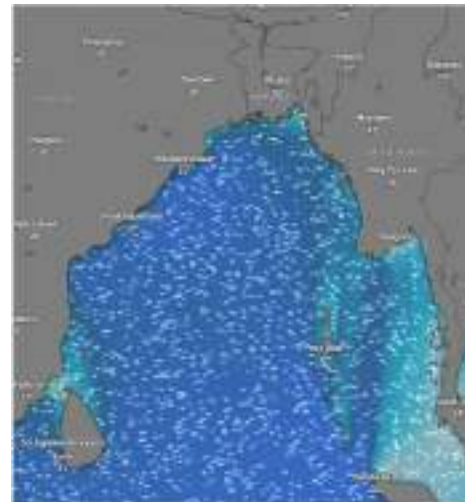
23 Apr 2026



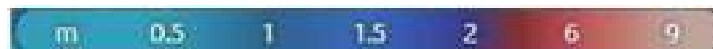
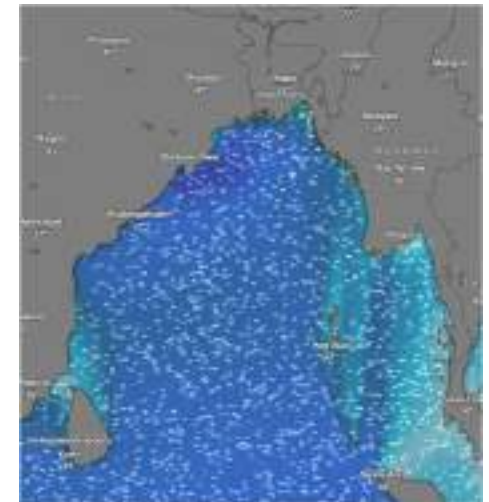
24 Apr 2026



25 Apr 2026



26 Apr 2026



Significant wave height (m)



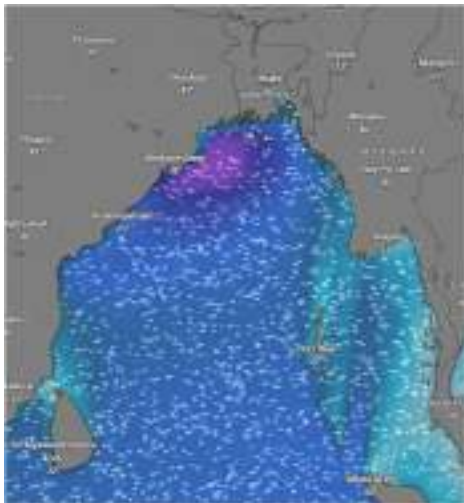
# MARINE WEATHER FORECAST (23 to 30 April 2026)

## ABEAM TO ST. MARTIN'S LIGHT HOUSE (20° 37' N, 092° 08' E)

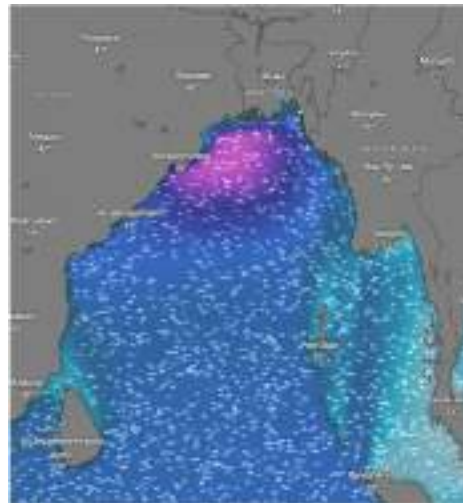


Date	Time	Air Temp (°C)		Sea Surface Temp (°C)	Baro Pressure (mbar)	Wind Direction	Wind Spd (kts)		Wave Ht (m)	Sea State	Humidity (%)	Prob of Rain (%)	Amount of Rain (mm)
		Max	Min				Gusting	Avg					
27-04-26 (Monday)	0001	31	25	28	1007	SSW	09	05	1.2	3	88	12	0.0
	0600			27	1008	SW	14	10	1.3	4	89	17	0.0
	1200			30	1007	SSW	13	09	1.3	4	75	09	0.0
	1800			28	1006	SW	15	11	1.5	4	86	15	0.0
28-04-26 (Tuesday)	0001	31	25	28	1007	SW	16	12	1.6	4	89	09	0.0
	0600			27	1008	SSW	14	10	1.6	4	90	15	0.0
	1200			30	1006	SSW	18	14	1.7	4	74	10	0.0
	1800			28	1005	SSW	17	13	1.7	4	87	17	0.0
29-04-26 (Wednesday)	0001	31	25	28	1007	SSW	17	13	1.7	4	89	10	0.0
	0600			27	1008	SSW	16	12	1.7	4	91	16	0.0
	1200			30	1006	SSW	17	13	1.7	4	75	09	0.0
	1800			28	1005	SW	15	11	1.6	4	86	15	0.0
30-04-26 (Thursday)	0001	31	25	28	1007	SSW	15	09	1.5	4	90	11	0.0
	0600			27	1008	SSW	16	10	1.5	4	89	15	0.0
	1200			30	1006	SSW	14	08	1.4	4	76	10	0.0
	1800			28	1005	SW	13	06	1.4	4	87	14	0.0

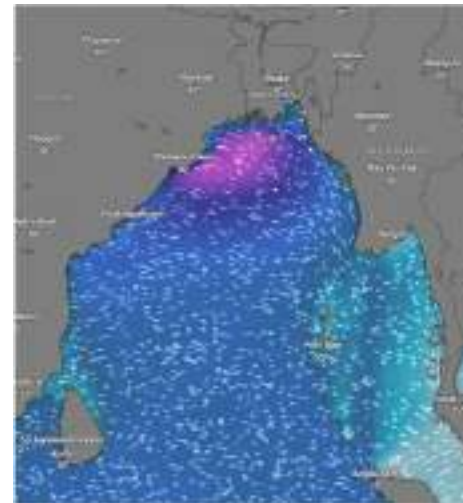
27 Apr 2026



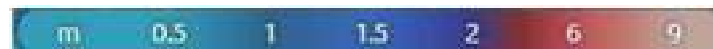
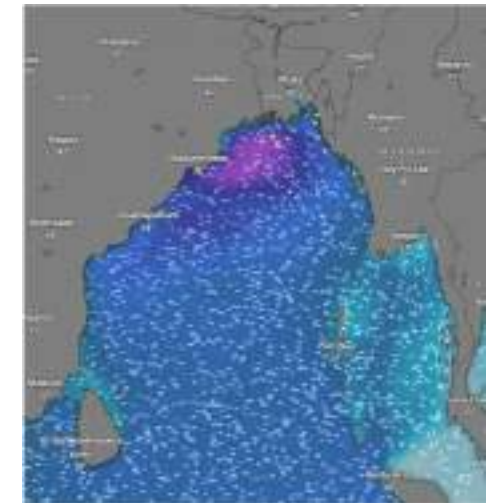
28 Apr 2026



29 Apr 2026



30 Apr 2026



Significant wave height (m)



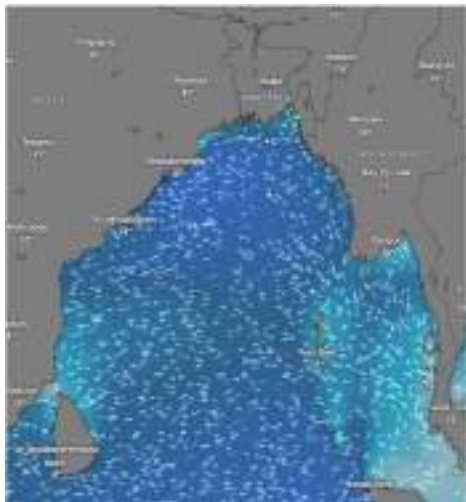
# MARINE WEATHER FORECAST (23 to 30 April 2026)

## PAYRA FAIRWAY (21° 22' N, 090° 6' E)

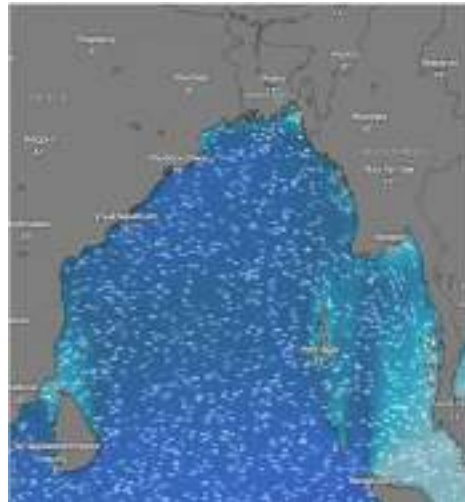


Date	Time	Air Temp (°C)		Sea Surface Temp (°C)	Baro Pressure (mbar)	Wind Direction	Wind Spd (kts)		Wave Ht (m)	Sea State	Humidity (%)	Prob of Rain (%)	Amount of Rain (mm)
		Max	Min				Gusting	Avg					
23-04-26 (Thursday)	0001	33	26	28	1007	S	17	12	1.1	3	89	09	0.0
	0600			27	1008	SSW	18	13	1.1	3	90	08	0.0
	1200			30	1007	SSW	15	10	1.2	3	76	10	0.0
	1800			29	1006	SSW	14	10	1.1	3	87	11	0.0
24-04-26 (Friday)	0001	33	26	28	1008	SW	16	12	1.2	3	89	08	0.0
	0600			27	1009	SW	12	08	1.1	3	90	07	0.0
	1200			30	1007	SSW	14	10	1.1	3	76	10	0.0
	1800			29	1006	SW	15	10	1.1	3	84	12	0.0
25-04-26 (Saturday)	0001	32	26	28	1010	SW	16	12	1.1	3	87	12	0.0
	0600			27	1011	SW	12	08	1.1	3	90	15	0.0
	1200			30	1009	SSW	15	11	1.1	3	72	09	0.0
	1800			28	1008	SW	15	11	1.2	3	85	14	0.0
26-04-26 (Sunday)	0001	32	26	28	1008	SW	13	09	1.2	4	87	12	0.0
	0600			27	1009	SW	14	10	1.3	4	90	15	0.0
	1200			30	1007	SSW	15	10	1.4	4	76	09	0.0
	1800			28	1006	SW	16	12	1.6	4	85	14	0.0

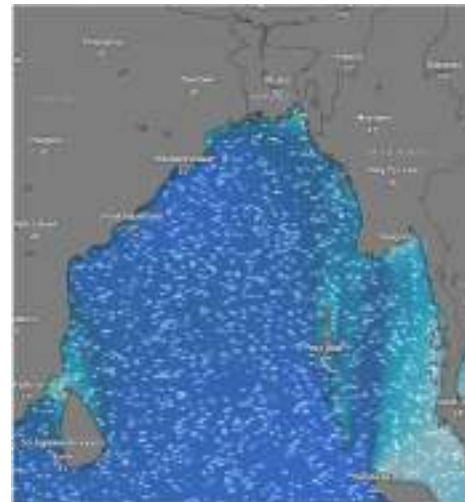
23 Apr 2026



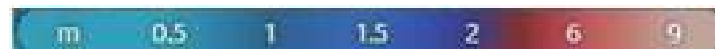
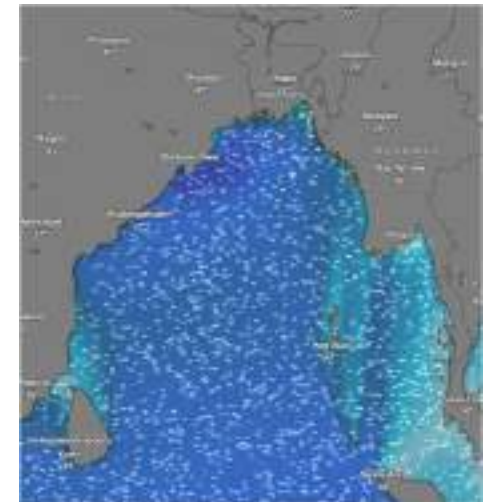
24 Apr 2026



25 Apr 2026



26 Apr 2026



Significant wave height (m)



# MARINE WEATHER FORECAST (23 to 30 April 2026)



## PAYRA FAIRWAY (21° 22' N, 090° 6' E)

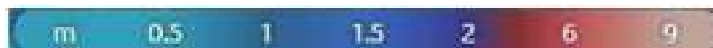
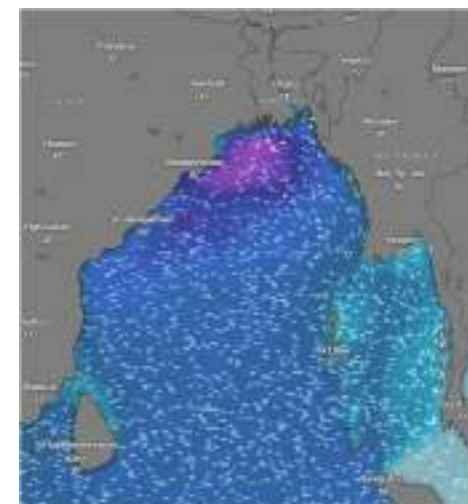
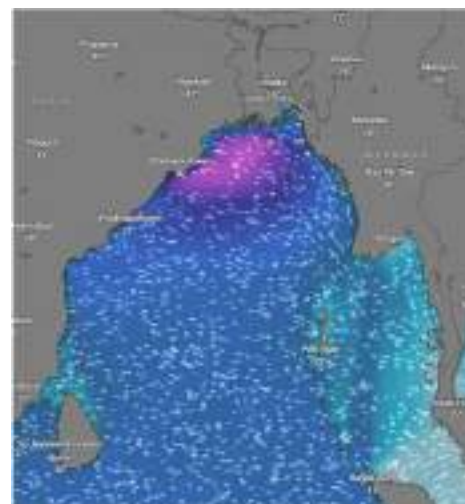
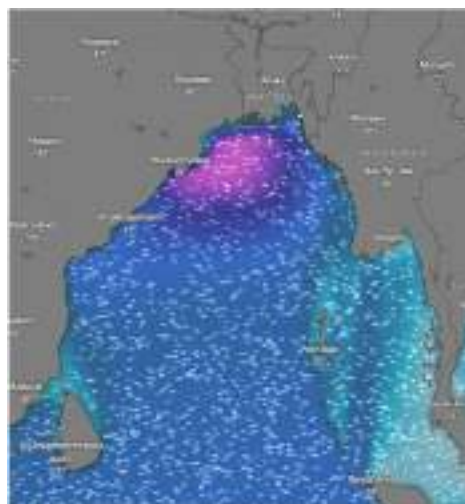
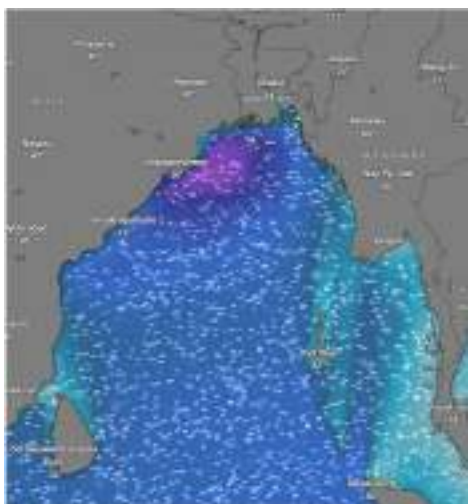
Date	Time	Air Temp (°C)		Sea Surface Temp (°C)	Baro Pressure (mbar)	Wind Direction	Wind Spd (kts)		Wae Ht (m)	Sea State	Humidity (%)	Prob of Rain (%)	Amount of Rain (mm)
		Max	Min				Gusting	Avg					
27-04-26 (Monday)	0001	31	25	28	1007	SSW	22	16	1.7	4	87	12	0.0
	0600			27	1008	SSW	20	14	1.8	4	90	15	0.0
	1200			30	1007	SSW	27	19	1.8	4	76	09	0.0
	1800			28	1006	SSW	27	20	2.0	4	85	14	0.0
28-04-26 (Tuesday)	0001	31	25	28	1007	SSE	22	16	2.3	4	89	12	0.0
	0600			27	1008	SSW	26	18	2.3	4	90	15	0.0
	1200			30	1006	SSW	27	19	2.4	4	73	09	0.0
	1800			28	1005	SSW	27	20	2.3	4	85	14	0.0
29-04-26 (Wednesday)	0001	31	25	28	1007	SSW	26	18	2.3	4	90	22	0.1
	0600			27	1008	SW	26	19	2.3	4	92	32	0.2
	1200			30	1006	SSW	26	18	2.3	4	76	15	0.0
	1800			28	1005	SSW	27	20	2.1	4	87	21	0.0
30-04-26 (Thursday)	0001	31	25	28	1007	SSW	26	19	2.1	4	89	23	0.1
	0600			27	1008	SSW	25	17	1.9	4	90	25	0.2
	1200			30	1006	SW	25	17	1.8	4	75	14	0.0
	1800			28	1005	SSW	26	21	1.7	4	86	19	0.0

27 Apr 2026

28 Apr 2026

29 Apr 2026

30 Apr 2026



Significant wave height (m)



# MARINE WEATHER FORECAST (23 to 30 April 2026)

## MONGLA FAIRWAY (21° 26' N, 089° 34' E)



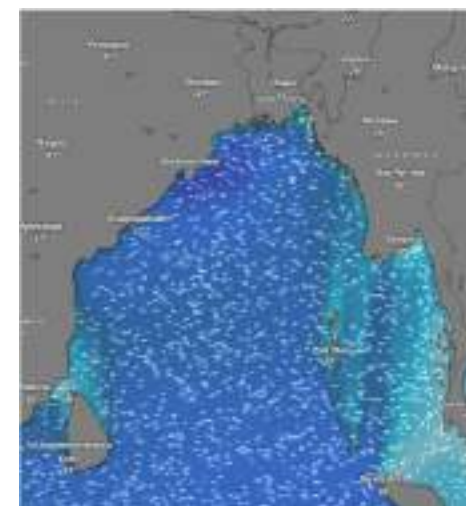
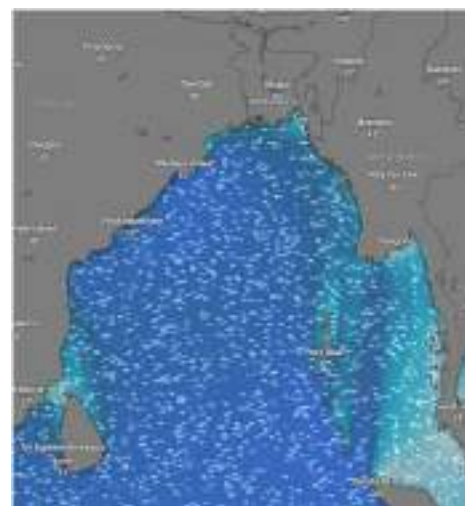
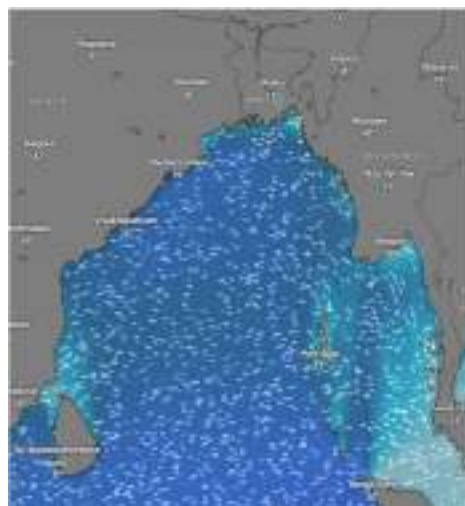
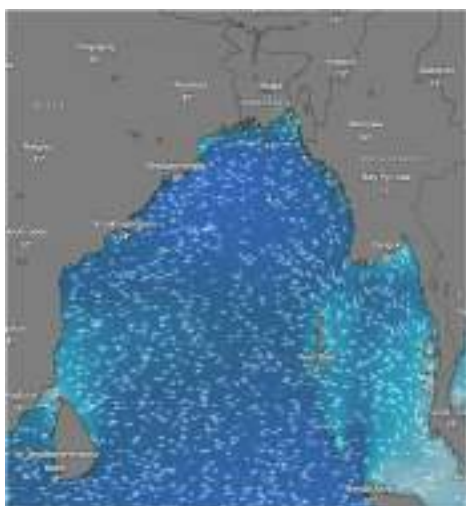
Date	Time	Air Temp (°C)		Sea Surface Temp (°C)	Baro Pressure (mbar)	Wind Direction	Wind Spd (kts)		Wave Ht (m)	Sea State	Humidity (%)	Prob of Rain (%)	Amount of Rain (mm)
		Max	Min				Gusting	Avg					
23-04-26 (Thursday)	0001	33	26	28	1007	S	17	13	1.3	4	88	08	0.0
	0600			27	1008	SSW	20	14	1.3	4	89	07	0.0
	1200			30	1007	SSW	14	10	1.3	4	75	10	0.0
	1800			29	1006	SW	15	09	1.3	4	86	10	0.0
24-04-26 (Friday)	0001	33	26	28	1008	SSW	17	13	1.1	3	89	12	0.0
	0600			27	1009	SW	13	09	1.1	3	90	17	0.0
	1200			30	1007	S	14	10	1.1	3	75	08	0.0
	1800			29	1006	SSW	15	10	1.1	3	87	12	0.0
25-04-26 (Saturday)	0001	32	26	28	1010	SSW	15	11	1.1	3	88	13	0.0
	0600			27	1011	SW	13	09	1.1	3	90	15	0.0
	1200			29	1009	SSW	14	09	1.1	3	73	11	0.0
	1800			29	1008	SW	17	13	1.2	3	84	17	0.0
26-04-26 (Sunday)	0001	32	26	28	1008	SSW	21	16	1.3	4	88	13	0.0
	0600			27	1009	SW	22	14	1.4	4	90	15	0.0
	1200			30	1007	SSW	17	13	1.5	4	75	11	0.0
	1800			28	1006	SSW	18	14	1.4	4	86	17	0.0

23 Apr 2026

24 Apr 2026

25 Apr 2026

26 Apr 2026



Significant wave height (m)



# MARINE WEATHER FORECAST (23 to 30 April 2026)

## MONGLA FAIRWAY (21° 26' N, 089° 34' E)



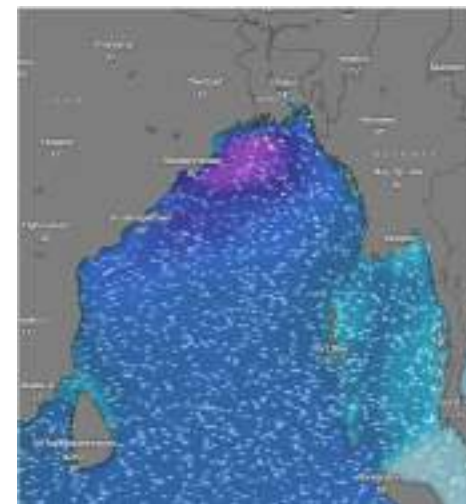
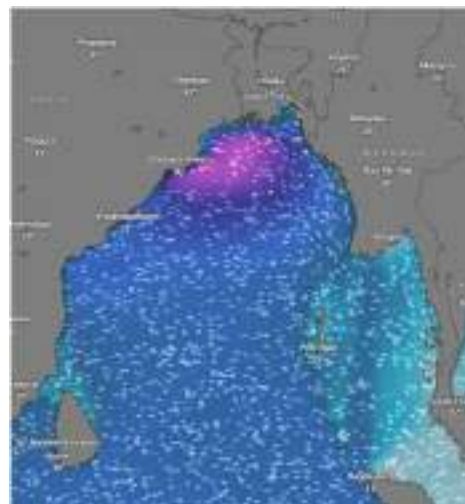
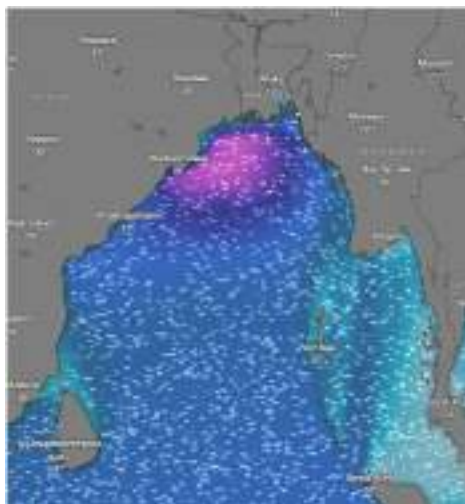
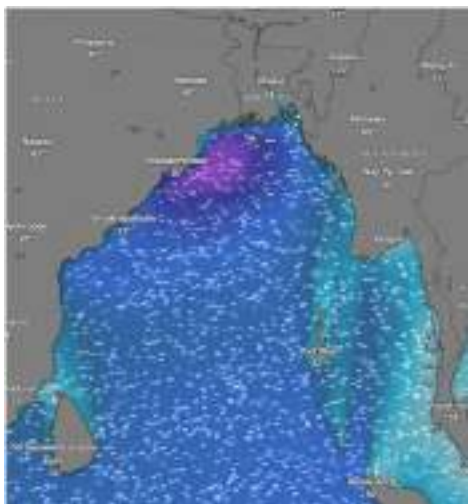
Date	Time	Air Temp (°C)		Sea Surface Temp (°C)	Baro Pressure (mbar)	Wind Direction	Wind Spd (kts)		Wave Ht (m)	Sea State	Humidity (%)	Prob of Rain (%)	Amount of Rain (mm)
		Max	Min				Gusting	Avg					
27-04-26 (Monday)	0001	31	25	28	1007	SSW	24	18	2.0	4	88	13	0.0
	0600			27	1008	SSW	17	13	1.9	4	90	15	0.0
	1200			30	1007	SSW	22	17	2.1	4	75	11	0.0
	1800			28	1006	SSW	24	19	2.3	4	86	17	0.0
28-04-26 (Tuesday)	0001	31	25	28	1007	SSW	19	14	2.4	4	89	13	0.0
	0600			27	1008	SW	26	18	2.4	4	90	15	0.0
	1200			30	1006	SSW	27	19	2.5	5	76	11	0.0
	1800			28	1005	SSW	27	20	2.4	4	87	17	0.0
29-04-26 (Wednesday)	0001	31	25	28	1007	SSW	28	20	2.4	4	90	14	0.0
	0600			27	1008	SW	27	20	2.4	4	93	22	0.1
	1200			30	1006	SW	27	19	2.4	4	78	15	0.0
	1800			28	1005	SSW	28	21	2.2	4	86	30	0.1
30-04-26 (Thursday)	0001	31	25	28	1007	SSW	27	20	2.1	4	91	13	0.0
	0600			27	1008	SW	25	19	2.0	4	90	20	0.1
	1200			30	1006	SW	23	17	1.9	4	74	12	0.0
	1800			28	1005	SSW	22	14	1.8	4	82	26	0.1

27 Apr 2026

28 Apr 2026

29 Apr 2026

30 Apr 2026



Significant wave height (m)



# MARINE WEATHER FORECAST (23 to 30 April 2026)

## OUTER EEZ (18° 48' N, 090° 30' E)



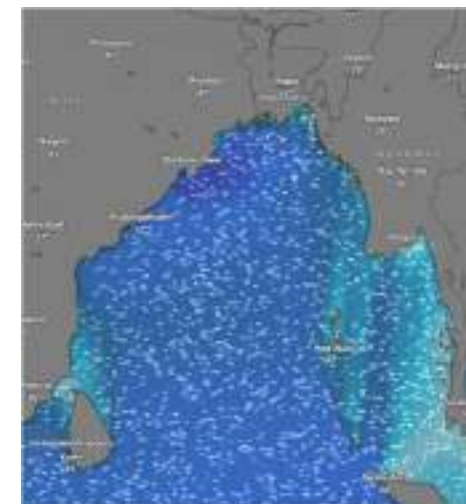
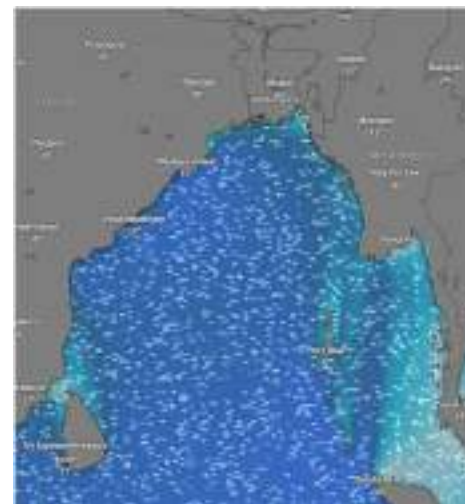
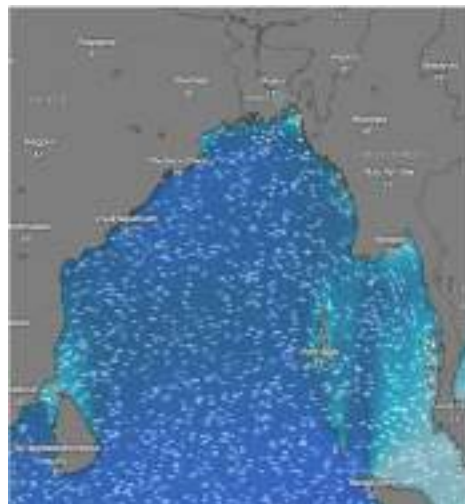
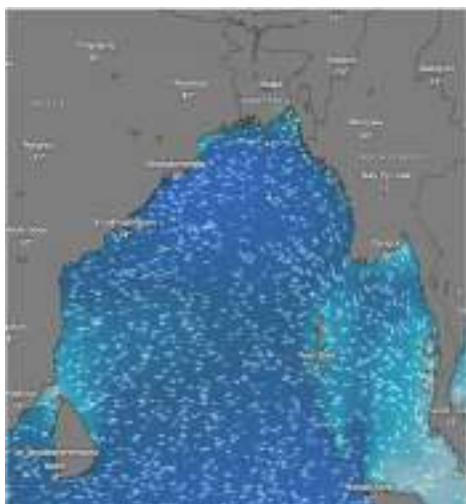
Date	Time	Air Temp (°C)		Sea Surface Temp (°C)	Baro Pressure (mbar)	Wind Direction	Wind Spd (kts)		Wave Ht (m)	Sea State	Humidity (%)	Prob of Rain (%)	Amount of Rain (mm)
		Max	Min				Gusting	Avg					
23-04-26 (Thursday)	0001	33	26	28	1007	SW	16	10	1.3	4	88	10	0.0
	0600			27	1008	SW	12	08	1.3	4	89	12	0.0
	1200			30	1007	SW	15	10	1.3	4	72	13	0.0
	1800			29	1006	SW	17	12	1.3	4	85	14	0.0
24-04-26 (Friday)	0001	33	26	28	1008	W	20	15	1.3	3	88	10	0.0
	0600			27	1009	SW	10	06	1.2	3	90	12	0.0
	1200			30	1007	SW	16	12	1.2	3	75	13	0.0
	1800			29	1006	SW	15	11	1.2	3	87	14	0.0
25-04-26 (Saturday)	0001	32	26	28	1010	SW	12	07	1.2	3	89	12	0.0
	0600			27	1011	SW	13	08	1.2	3	90	16	0.0
	1200			30	1009	SW	15	11	1.2	3	74	10	0.0
	1800			28	1008	SW	14	10	1.3	4	85	17	0.0
26-04-26 (Sunday)	0001	32	26	28	1008	SW	13	09	1.2	3	89	10	0.0
	0600			27	1009	SSW	12	08	1.3	4	90	16	0.0
	1200			30	1007	SW	12	08	1.3	4	75	11	0.0
	1800			28	1006	SW	13	09	1.5	4	86	15	0.0

23 Apr 2026

24 Apr 2026

25 Apr 2026

26 Apr 2026



Significant wave height (m)



# MARINE WEATHER FORECAST (23 to 30 April 2026)

## OUTER EEZ (18° 48' N, 090° 30' E)



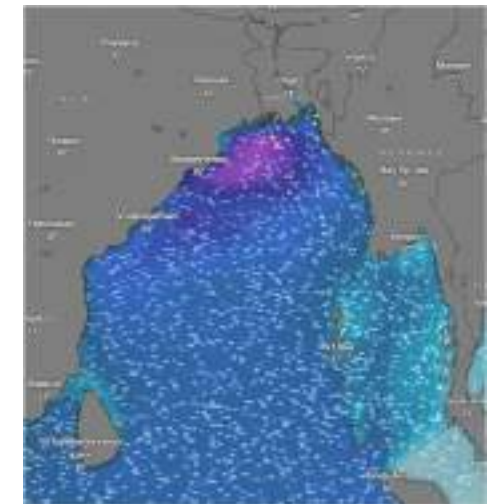
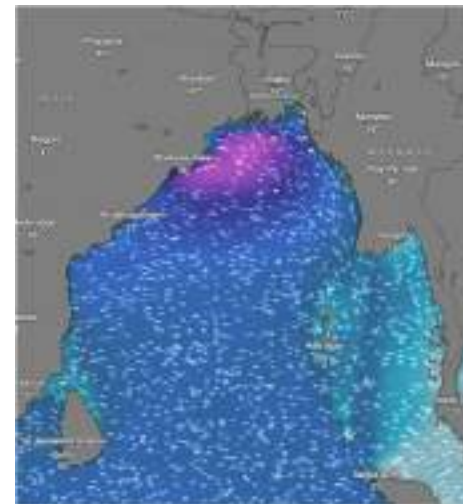
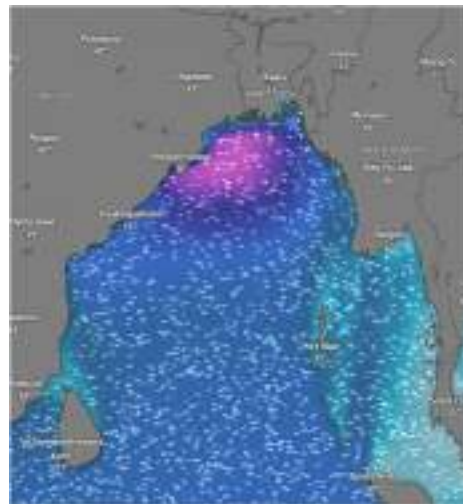
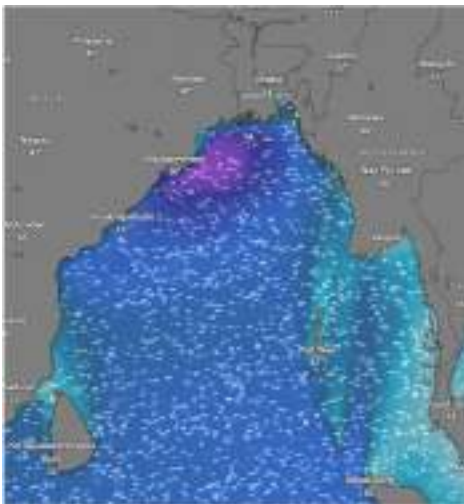
Date	Time	Air Temp (°C)		Sea Surface Temp (°C)	Baro Pressure (mbar)	Wind Direction	Wind Spd (kts)		Wave Ht (m)	Sea State	Humidity (%)	Prob of Rain (%)	Amount of Rain (mm)
		Max	Min				Gusting	Avg					
27-04-26 (Monday)	0001	31	25	28	1007	SW	18	14	1.5	4	89	10	0.0
	0600			27	1008	SSW	21	15	1.6	4	90	16	0.0
	1200			30	1007	SSW	18	14	1.7	4	75	11	0.0
	1800			28	1006	SW	22	17	1.8	4	86	15	0.0
28-04-26 (Tuesday)	0001	31	25	28	1007	SW	21	15	2.0	4	88	08	0.0
	0600			27	1008	SSW	22	17	2.1	4	90	15	0.0
	1200			30	1006	SSW	18	14	2.0	4	74	12	0.0
	1800			28	1005	SW	26	18	2.0	4	87	17	0.0
29-04-26 (Wednesday)	0001	31	25	28	1007	SSW	25	17	2.1	4	89	12	0.0
	0600			27	1008	SSW	26	18	2.0	4	91	31	0.2
	1200			30	1006	SSW	22	16	1.9	4	75	15	0.0
	1800			28	1005	SW	21	15	1.8	4	88	24	0.1
30-04-26 (Thursday)	0001	31	25	28	1007	SSW	20	13	1.8	4	88	13	0.0
	0600			27	1008	SSW	25	16	1.7	4	90	29	0.2
	1200			30	1006	SSW	22	15	1.6	4	76	16	0.0
	1800			28	1005	SW	19	11	1.7	4	87	23	0.1

27 Apr 2026

28 Apr 2026

29 Apr 2026

30 Apr 2026



Significant wave height (m)



## PREDICTED SURFACE PRESSURE FORECAST (23 to 29 April 2026)



23 Apr 2026



24 Apr 2026



25 Apr 2026



26 Apr 2026



27 Apr 2026



28 Apr 2026



29 Apr 2026

