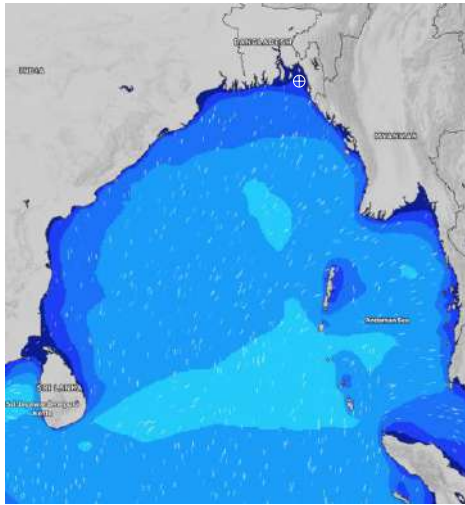


MARINE WEATHER FORECAST- NEAR AUTHORITY BUOY (Lat 22° 12' N, Long 091° 38' E)

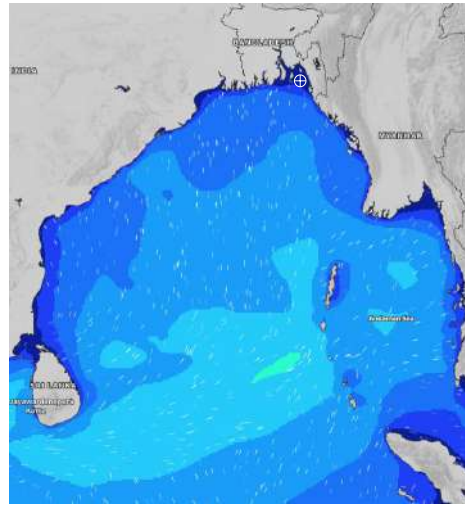
DATE : 22 to 29 June 2024

Date	Time	Max Wind Spd (kts)	Wind Direction	Wave Ht (m)	Sea State	Baro Pressure	Air Temp		Sea Surface Temp	Humidity (%)	Prb of Rain (%)	Sea State	Wave Ht (m)
							Max	Min					
22-06-24	0001	11	SSE	0.1	1	1003	31	27	28	90%	22% (0.0 mm)	0	0
	0600	13	SE	0.2	2	1002			27	89%	14% (0.0 mm)	1	0 - 0.1
	1200	11	SSW	0.2	2	1002			29	80%	24% (0.1 mm)	2	0.1 - 0.5
	1800	14	SSW	0.3	2	1001			29	87%	24% (0.1 mm)	3	0.5 - 1.25
23-06-24	0001	12	SSE	0.2	2	1003	31	27	28	91%	41% (0.4 mm)	4	1.25 - 2.5
	0600	9	SE	0.2	2	1003			27	94%	20% (0.0 mm)	5	2.5 - 4.0
	1200	10	SW	0.3	2	1003			28	79%	40% (0.3 mm)	6	4.0 - 6.0
	1800	11	SSW	0.2	2	1001			29	87%	20% (0.0 mm)	7	6.0 - 9.0
24-06-24	0001	10	SSE	0.2	2	1003	31	27	28	92%	49% (0.4 mm)	8	9.0 - 14.0
	0600	8	S	0.1	1	1003			28	94%	38% (0.3 mm)	9	Over 14.0
	1200	6	SW	0.1	1	1002			28	79%	38% (0.2 mm)		
	1800	8	SW	0.1	1	1000			29	87%	16% (0.0 mm)		
25-06-24	0001	9	S	0.1	1	1002	31	27	29	91%	44% (0.4 mm)		
	0600	7	SSE	0.1	1	1000			28	93%	49% (0.4 mm)		
	1200	6	SW	0.1	1	1001			28	81%	49% (0.4 mm)		
	1800	7	SSW	0.1	1	999			29	86%	24% (0.1 mm)		

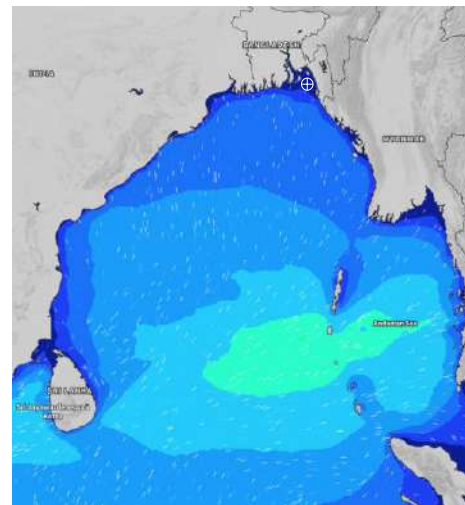
22 June 24 Sat (Probability 98%)



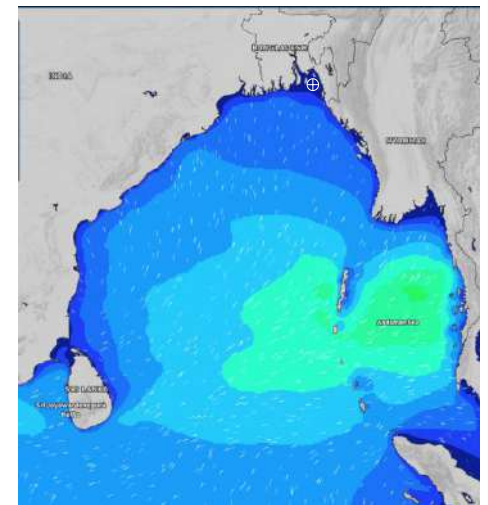
23 June 24 Sun (Probability 95%)



24 June 24 Mon (Probability 90%)



25 June 24 Tue (Probability 80%)



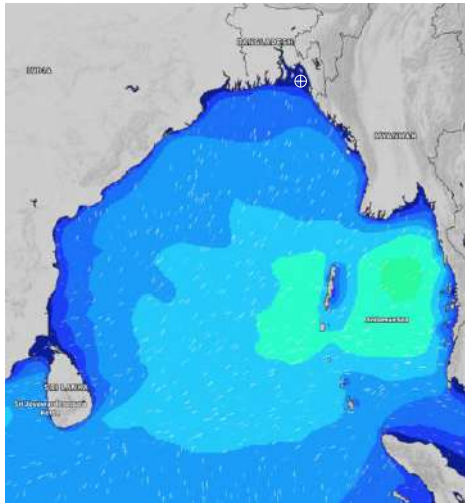
Significant wave height (m)

MARINE WEATHER FORECAST- NEAR AUTHORITY BUOY (Lat 22° 12' N, Long 091° 38' E)

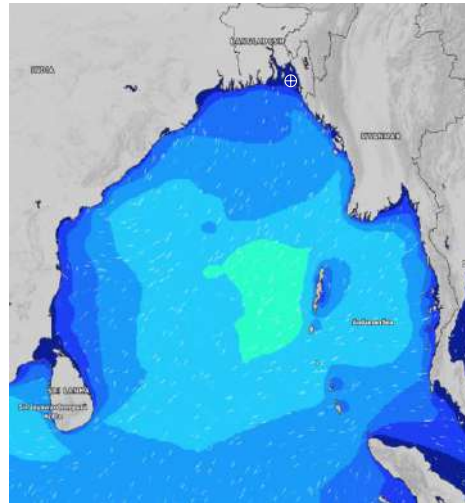
DATE : 22 to 29 June 2024

Date	Time	Max Wind Spd (kts)	Wind Direction	Wave Ht (m)	Sea State	Baro Pressure	Air Temp		Sea Surface Temp	Humidity (%)	Prob of Rain (%)	Sea State	Wave Ht (m)
							Max	Min					
26-06-24	0001	6	S	0.1	1	1000	30	27	29	91%	44% (0.4 mm)	0	0
	0600	5	ESE	0.1	1	1000			28	93%	43% (0.4 mm)	1	0 - 0.1
	1200	4	S	0.1	1	1000			29	79%	49% (0.5 mm)	2	0.1 - 0.5
	1800	3	WSW	0.1	1	998			29	86%	24% (0.1 mm)	3	0.5 - 1.25
27-06-24	0001	4	SE	0.1	1	1000	31	27	28	91%	55% (0.4 mm)	4	1.25 - 2.5
	0600	3	ESE	0.1	1	1000			28	94%	45% (0.4 mm)	5	2.5 - 4.0
	1200	5	SW	0.1	1	1000			28	79%	49% (0.5 mm)	6	4.0 - 6.0
	1800	10	S	0.2	2	999			29	87%	24% (0.1 mm)	7	6.0 - 9.0
28-06-24	0001	23	SE	0.3	2	1001	31	26	27	92%	60% (0.6 mm)	8	9.0 - 14.0
	0600	25	SE	0.3	2	1001			27	94%	45% (0.4 mm)	9	Over 14.0
	1200	21	S	0.4	2	1000			30	79%	36% (0.2 mm)		
	1800	22	SSE	0.4	2	999			29	87%	24% (0.1 mm)		
29-06-24	0001	25	SE	0.5	2	1001	30	26	27	91%	61% (0.6 mm)		
	0600	23	SSE	0.4	2	1001			27	93%	53% (0.4 mm)		
	1200	25	S	0.5	2	1001			28	81%	36% (0.2 mm)		
	1800	26	SSE	0.5	2	1000			28	86%	24% (0.1 mm)		

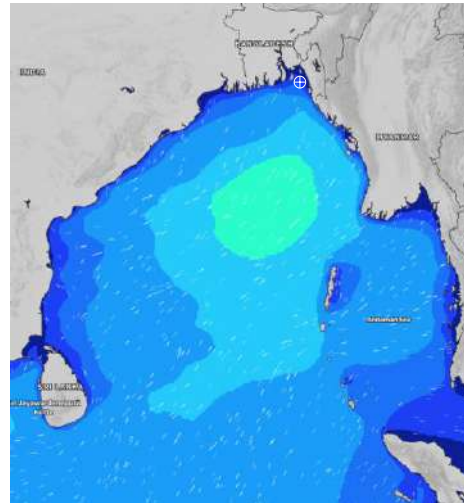
26 June 24 Wed (Probability 70%)



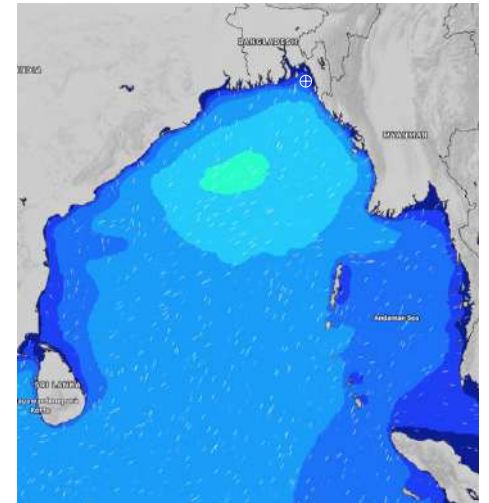
27 June 24 Thu (Probability 60%)



28 June 24 Fri (Probability 50%)



29 June 24 Sat (Probability 50%)



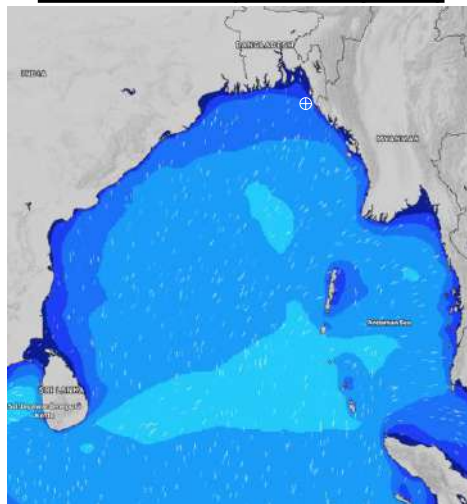
Significant wave height (m)

MARINE WEATHER FORECAST- 20 NM WEST OF ELEPHANT POINT (Lat 21° 10' N, Long 091° 42' E)

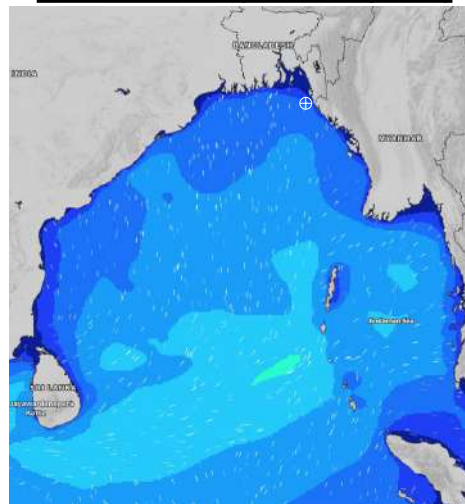
DATE : 22 to 29 June 2024

Date	Time	Max Wind Spd (kts)	Wind Direction	Wave Ht (m)	Sea State	Baro Pressure	Air Temp		Sea Surface Temp	Humidity (%)	Prob of Rain (%)	Sea State	Wave Ht (m)
							Max	Min					
22-06-24	0001	10	SE	1.3	4	1002	30	27	29	90%	24% (0.1 mm)	0	0
	0600	15	SE	1.3	4	1002			28	88%	20% (0.0 mm)	1	0 - 0.1
	1200	13	SSE	1.3	4	1002			29	82%	51% (0.5 mm)	2	0.1 - 0.5
	1800	11	SSW	1.3	4	1001			29	88%	24% (0.1 mm)	3	0.5 - 1.25
23-06-24	0001	9	S	1.2	3	1003	30	27	29	90%	32% (0.2 mm)	4	1.25 - 2.5
	0600	8	SE	1.2	3	1003			28	92%	24% (0.0 mm)	5	2.5 - 4.0
	1200	10	S	1.3	4	1003			29	82%	44% (0.4 mm)	6	4.0 - 6.0
	1800	9	SSW	1.3	4	1001			29	88%	24% (0.1 mm)	7	6.0 - 9.0
24-06-24	0001	8	SW	1.2	3	1003	30	27	29	90%	42% (0.4 mm)	8	9.0 - 14.0
	0600	4	SW	1.2	3	1003			28	92%	33% (0.2 mm)	9	Over 14.0
	1200	5	SSW	1.1	3	1002			29	82%	24% (0.1 mm)		
	1800	8	WSW	1.1	3	1000			29	86%	19% (0.0 mm)		
25-06-24	0001	9	SSW	1.1	3	1002	30	26	29	90%	32% (0.2 mm)		
	0600	4	S	1.1	3	1000			29	92%	46% (0.4 mm)		
	1200	5	SSW	1.1	3	1001			29	84%	42% (0.4 mm)		
	1800	4	WSW	1.0	3	999			29	87%	24% (0.1 mm)		

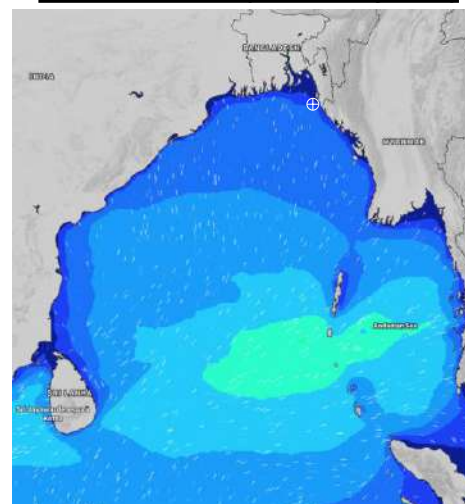
22 June 24 Sat (Probability 98%)



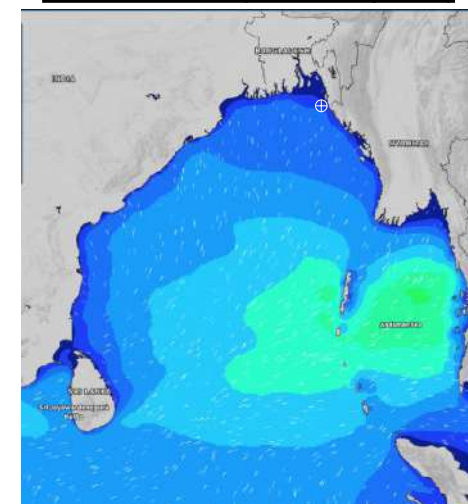
23 June 24 Sun (Probability 95%)



24 June 24 Mon (Probability 90%)



25 June 24 Tue (Probability 80%)



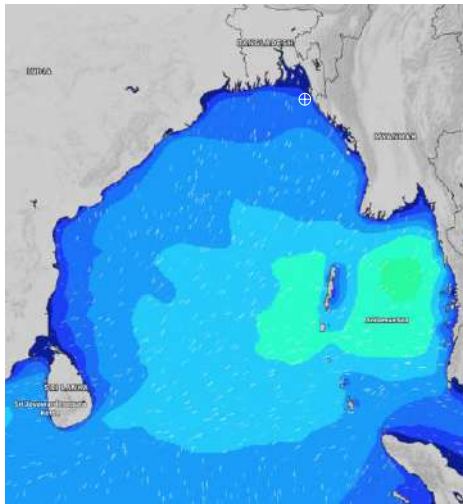
Significant wave height (m)

MARINE WEATHER FORECAST- 20 NM WEST OF ELEPHANT POINT (Lat 21° 10' N, Long 091° 42' E)

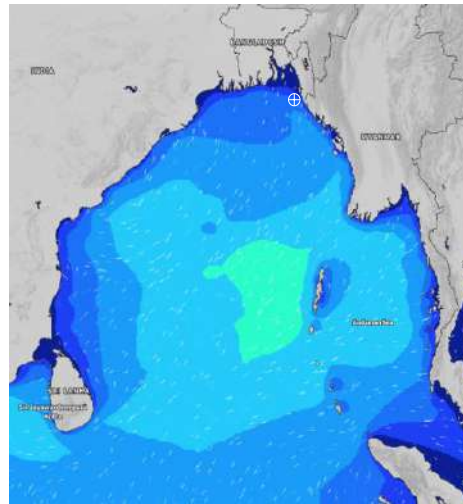
DATE : 22 to 29 June 2024

Date	Time	Max Wind Spd (kts)	Wind Direction	Wave Ht (m)	Sea State	Baro Pressure	Air Temp		Sea Surface Temp	Humidity (%)	Prob of Rain (%)	Sea State	Wave Ht (m)
							Max	Min					
26-06-24	0001	6	SSW	1.1	3	1000	30	26	29	90%	60% (0.6 mm)	0	0
	0600	5	ESE	1.2	3	1000			28	92%	65% (0.7 mm)	1	0 - 0.1
	1200	4	SSE	1.3	4	1000			28	82%	64% (0.6 mm)	2	0.1 - 0.5
	1800	3	NE	1.3	4	999			28	86%	36% (0.3 mm)	3	0.5 - 1.25
27-06-24	0001	12	ESE	1.2	3	1000	30	26	29	90%	69% (0.7 mm)	4	1.25 - 2.5
	0600	10	SSE	1.2	3	1000			28	92%	75% (1.3 mm)	5	2.5 - 4.0
	1200	12	SSE	1.3	4	1000			29	84%	56% (0.4 mm)	6	4.0 - 6.0
	1800	23	SSE	1.8	4	999			29	87%	36% (0.3 mm)	7	6.0 - 9.0
28-06-24	0001	24	SSE	1.7	4	1001	29	26	28	91%	70% (0.9 mm)	8	9.0 - 14.0
	0600	23	SE	1.8	4	1001			28	92%	50% (0.4 mm)	9	Over 14.0
	1200	26	SE	2.0	4	1001			28	87%	56% (0.4 mm)		
	1800	21	SSE	2.0	4	999			28	86%	36% (0.3 mm)		
29-06-24	0001	22	S	2.1	4	1001	29	26	28	91%	45% (0.4 mm)		
	0600	22	S	2.2	4	1001			28	92%	53% (0.5 mm)		
	1200	24	SSE	2.1	4	1001			28	87%	56% (0.4 mm)		
	1800	23	SSE	2.1	4	1000			28	86%	36% (0.3 mm)		

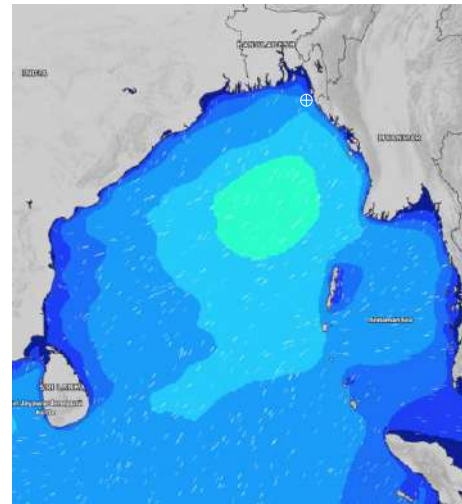
26 June 24 Wed (Probability 70%)



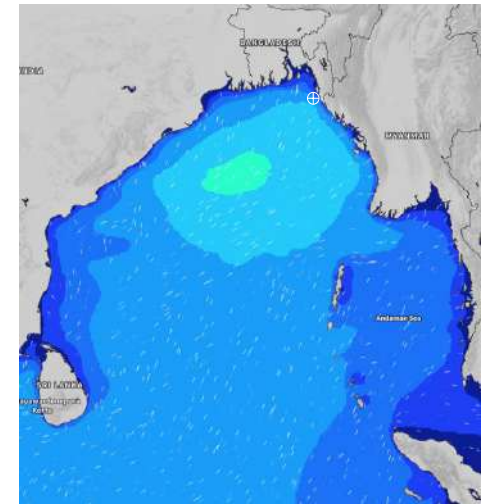
27 June 24 Thu (Probability 60%)



28 June 24 Fri (Probability 50%)



29 June 24 Sat (Probability 50%)



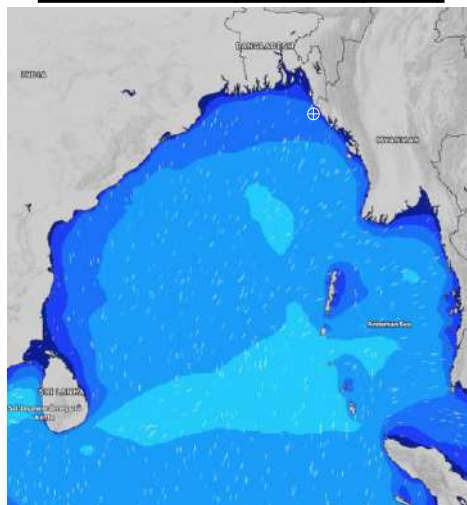
Significant wave height (m)

MARINE WEATHER FORECAST- 15 NM WEST OF ST. MARTIN'S LIGHT HOUSE (Lat 20° 37' N, Long 092° 03' E)

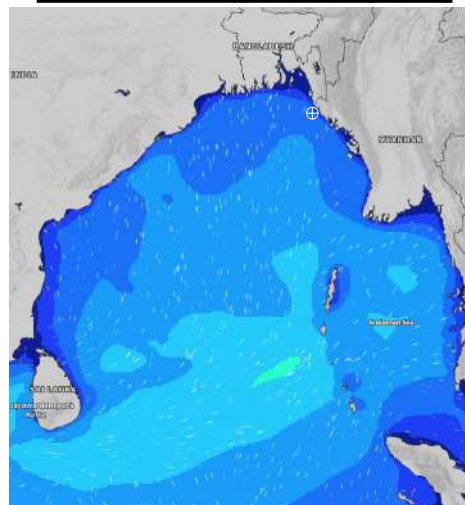
DATE : 22 to 29 June 2024

Date	Time	Max Wind Spd (kts)	Wind Direction	Wave Ht (m)	Sea State	Baro Pressure	Air Temp		Sea Surface Temp	Humidity (%)	Prob of Rain(%)	Sea State	Wave Ht (m)
							Max	Min					
22-06-24	0001	11	S	1.7	4	1003	30	26	29	92%	45% (0.4 mm)	0	0
	0600	9	SSE	1.6	4	1001			29	90%	34% (0.2 mm)	1	0 - 0.1
	1200	9	SSE	1.6	4	1003			29	87%	51% (0.5 mm)	2	0.1 - 0.5
	1800	9	SW	1.6	4	1001			29	89%	34% (0.2 mm)	3	0.5 - 1.25
23-06-24	0001	9	SSW	1.6	4	1003	30	26	29	90%	46% (0.4 mm)	4	1.25 - 2.5
	0600	5	SSE	1.6	4	1003			28	92%	40% (0.5 mm)	5	2.5 - 4.0
	1200	9	SSE	1.7	4	1004			29	86%	45% (0.4 mm)	6	4.0 - 6.0
	1800	9	SW	1.6	4	1001			29	89%	20% (0.0 mm)	7	6.0 - 9.0
24-06-24	0001	7	SSW	1.5	4	1003	30	26	29	90%	56% (0.5 mm)	8	9.0 - 14.0
	0600	6	WSW	1.4	4	1003			28	92%	40% (0.4 mm)	9	Over 14.0
	1200	5	SW	1.4	4	1003			29	86%	32% (0.2 mm)		
	1800	7	WSW	1.4	4	1000			29	87%	22% (0.0 mm)		
25-06-24	0001	6	SW	1.4	4	1002	30	26	29	90%	39% (0.3 mm)		
	0600	4	W	1.4	4	1000			29	92%	56% (0.4 mm)		
	1200	3	SW	1.4	4	1001			29	86%	48% (0.4 mm)		
	1800	5	W	1.3	4	999			29	88%	24% (0.0 mm)		

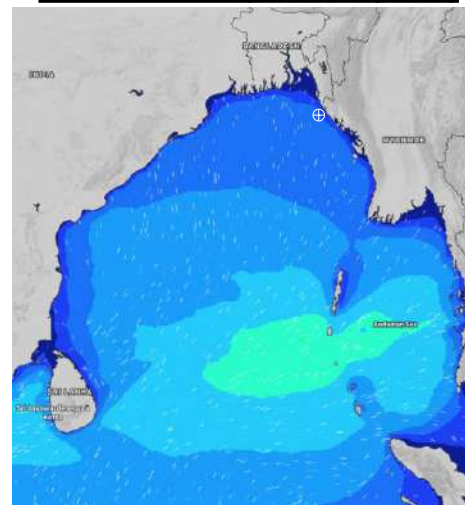
22 June 24 Sat (Probability 98%)



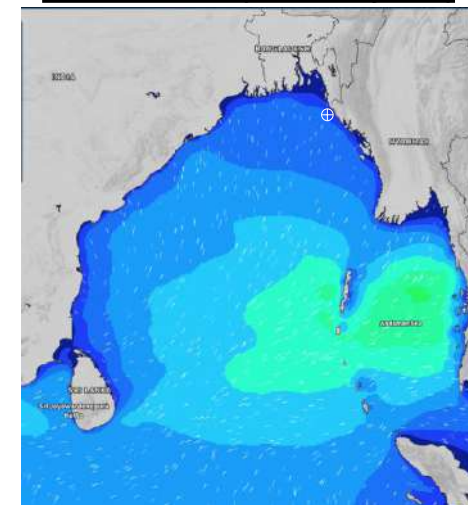
23 June 24 Sun (Probability 95%)



24 June 24 Mon (Probability 90%)



25 June 24 Tue (Probability 80%)



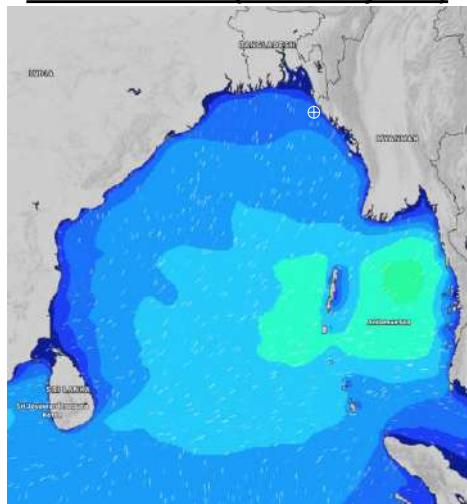
Significant wave height (m)

MARINE WEATHER FORECAST- 15 NM WEST OF ST. MARTIN'S LIGHT HOUSE (Lat 20° 37' N, Long 092° 03' E)

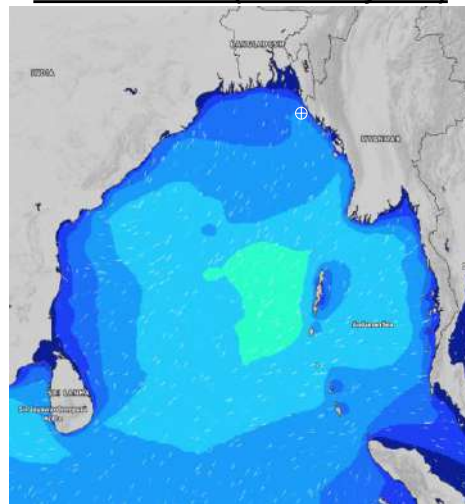
DATE : 22 to 29 June 2024

Date	Time	Max Wind Spd (kts)	Wind Direction	Wave Ht (m)	Sea State	Baro Pressure	Air Temp		Sea Surface Temp	Humidity (%)	Prob of Rain (%)	Sea State	Wave Ht (m)
							Max	Min					
26-06-24	0001	6	SW	1.4	4	1001	29	27	29	90%	60% (0.9 mm)	0	0
	0600	5	WSW	1.6	4	999			28	92%	69% (0.8 mm)	1	0 - 0.1
	1200	6	NE	1.7	4	1001			28	86%	78% (1.2 mm)	2	0.1 - 0.5
	1800	4	N	1.6	4	998			28	89%	60% (0.7 mm)	3	0.5 - 1.25
27-06-24	0001	2	NE	1.6	4	1000	30	26	28	90%	60% (0.9 mm)	4	1.25 - 2.5
	0600	9	ENE	1.6	4	999			28	92%	69% (0.8 mm)	5	2.5 - 4.0
	1200	17	SE	1.8	4	1001			28	86%	78% (1.2 mm)	6	4.0 - 6.0
	1800	22	SE	1.9	4	998			28	87%	59% (0.9 mm)	7	6.0 - 9.0
28-06-24	0001	21	S	1.9	4	1002	29	26	29	92%	66% (0.8 mm)	8	9.0 - 14.0
	0600	20	SSE	2.1	4	1000			28	93%	70% (1.2 mm)	9	Over 14.0
	1200	23	SSE	2.3	4	1002			28	94%	55% (0.7 mm)		
	1800	23	S	2.5	4	999			28	91%	60% (0.9 mm)		
29-06-24	0001	23	S	2.8	5	1002	29	27	28	92%	69% (0.8 mm)		
	0600	21	S	2.7	5	1001			28	93%	71% (0.7 mm)		
	1200	20	S	2.5	4	1003			28	94%	45% (0.4 mm)		
	1800	22	S	2.5	4	1001			28	91%	32% (0.2 mm)		

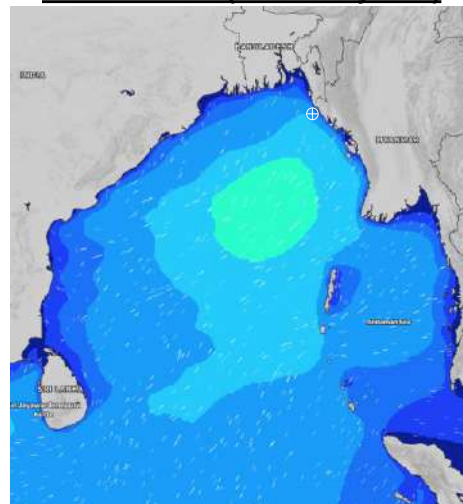
26 June 24 Wed (Probability 70%)



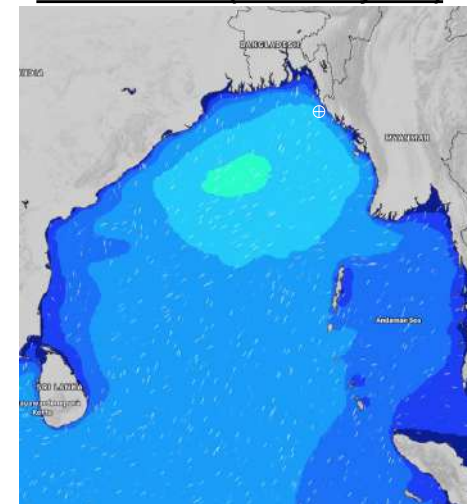
27 June 24 Thu (Probability 60%)



28 June 24 Fri (Probability 50%)



29 June 24 Sat (Probability 50%)



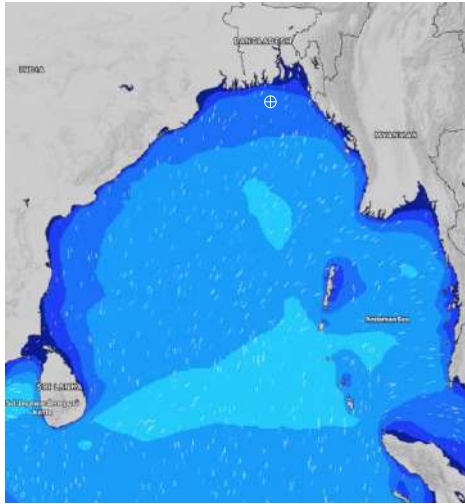
Significant wave height (m)

MARINE WEATHER FORECAST- 40 NM ESE OF PAYRA FAIRWAY (Lat 21° 07' N, Long 090° 45' E)

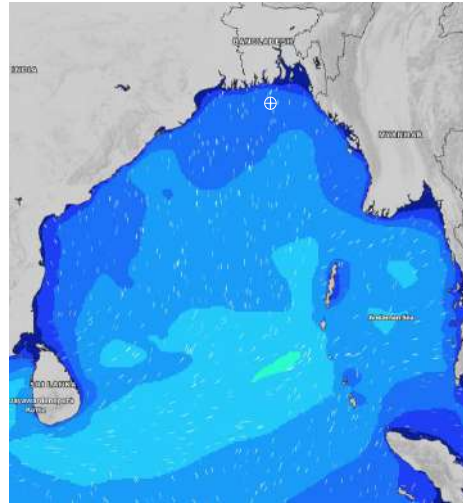
DATE : 22 to 29 June 2024

Date	Time	Max Wind Spd (kts)	Wind Direction	Wave Ht (m)	Sea State	Baro Pressure	Air Temp		Sea Surface Temp	Humidity (%)	Prob of Rain (%)	Sea State	Wave Ht (m)
							Max	Min					
22-06-24	0001	10	SE	1.7	4	1002	31	28	29	90%	23% (0.0 mm)	0	0
	0600	8	SSE	1.6	4	1001			29	87%	17% (0.0 mm)	1	0 - 0.1
	1200	9	S	1.6	4	1002			29	84%	39% (0.3 mm)	2	0.1 - 0.5
	1800	10	SSW	1.6	4	1001			29	84%	16% (0.0 mm)	3	0.5 - 1.25
23-06-24	0001	10	SSW	1.6	4	1003	31	28	29	88%	24% (0.1 mm)	4	1.25 - 2.5
	0600	6	S	1.7	4	1003			29	90%	32% (0.2 mm)	5	2.5 - 4.0
	1200	9	S	1.7	4	1003			29	83%	24% (0.1 mm)	6	4.0 - 6.0
	1800	10	SW	1.7	4	1001			29	84%	16% (0.0 mm)	7	6.0 - 9.0
24-06-24	0001	9	SSW	1.5	4	1003	31	28	29	87%	21% (0.0 mm)	8	9.0 - 14.0
	0600	7	SW	1.5	4	1003			29	90%	23% (0.0 mm)	9	Over 14.0
	1200	8	SSW	1.5	4	1002			29	83%	24% (0.0 mm)		
	1800	7	SW	1.5	4	1000			29	84%	12% (0.0 mm)		
25-06-24	0001	11	SSW	1.5	4	1001	31	28	29	87%	18% (0.0 mm)		
	0600	8	SSW	1.4	4	1000			29	89%	34% (0.2 mm)		
	1200	6	SSW	1.4	4	1001			29	82%	40% (0.4 mm)		
	1800	4	S	1.4	4	999			29	84%	12% (0.0 mm)		

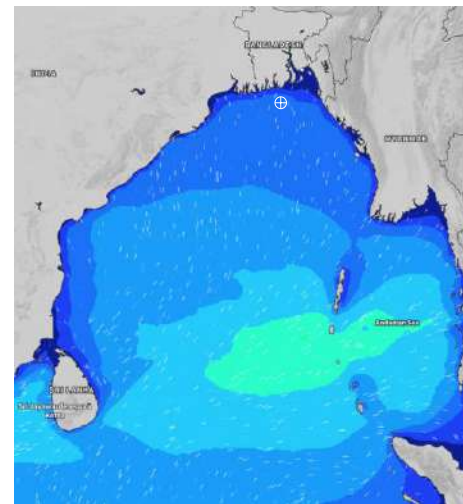
22 June 24 Sat (Probability 98%)



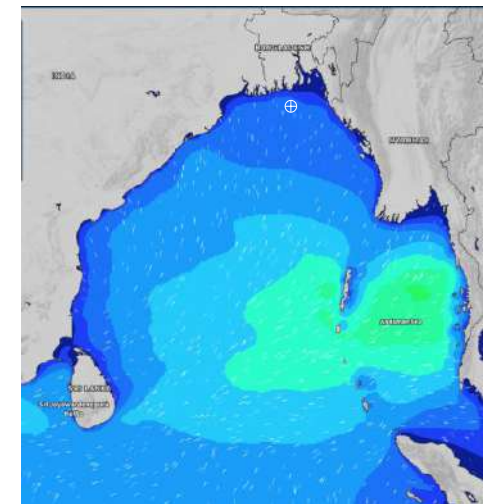
23 June 24 Sun (Probability 95%)



24 June 24 Mon (Probability 90%)



25 June 24 Tue (Probability 80%)



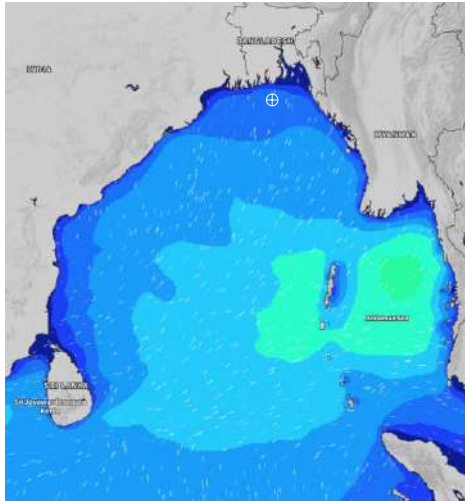
Significant wave height (m)

MARINE WEATHER FORECAST- 40 NM ESE OF PAYRA FAIRWAY (Lat 21° 07' N, Long 090° 45' E)

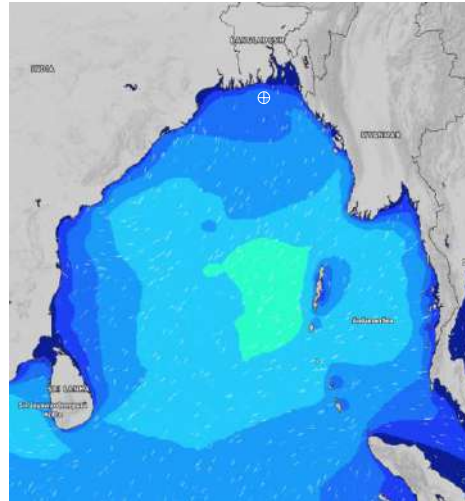
DATE : 22 to 29 June 2024

Date	Time	Max Wind Spd (kts)	Wind Direction	Wave Ht (m)	Sea Stae	Baro Pressure	Air Temp		Sea Surface Temp	Humidity (%)	Prob of Rain (%)	Sea State	Wave Ht (m)
							Max	Min					
26-06-24	0001	9	SSW	1.4	4	1000	31	28	29	87%	44% (0.4 mm)	0	0
	0600	6	SSW	1.6	4	1000			28	90%	43% (0.4 mm)	1	0 - 0.1
	1200	5	SE	1.7	4	1000			29	84%	49% (0.5 mm)	2	0.1 - 0.5
	1800	6	ESE	1.6	4	998			29	86%	24% (0.1 mm)	3	0.5 - 1.25
27-06-24	0001	6	SSE	1.6	4	1000	30	28	29	87%	34% (0.2 mm)	4	1.25 - 2.5
	0600	11	SE	1.6	4	1000			28	90%	32% (0.2 mm)	5	2.5 - 4.0
	1200	14	SE	1.6	4	1000			29	82%	36% (0.2 mm)	6	4.0 - 6.0
	1800	14	SSE	1.8	4	999			29	86%	24% (0.1 mm)	7	6.0 - 9.0
28-06-24	0001	17	SSE	1.8	4	1000	30	28	29	88%	34% (0.2 mm)	8	9.0 - 14.0
	0600	22	SSE	2.0	4	999			28	81%	44% (0.4 mm)	9	Over 14.0
	1200	20	SSE	2.2	4	999			29	86%	43% (0.4 mm)		
	1800	16	S	2.3	4	998			29	87%	24% (0.1 mm)		
29-06-24	0001	20	SSW	2.6	5	1000	30	27	29	87%	34% (0.2 mm)		
	0600	21	SSW	2.6	5	1000			28	90%	44% (0.4 mm)		
	1200	21	S	2.5	4	1000			29	83%	43% (0.4 mm)		
	1800	18	S	2.5	4	999			29	86%	24% (0.1 mm)		

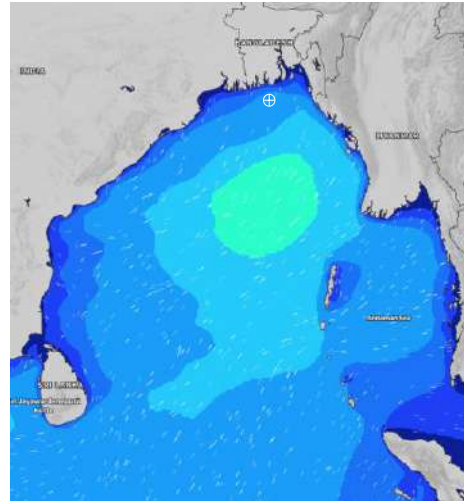
26 June 24 Wed (Probability 70%)



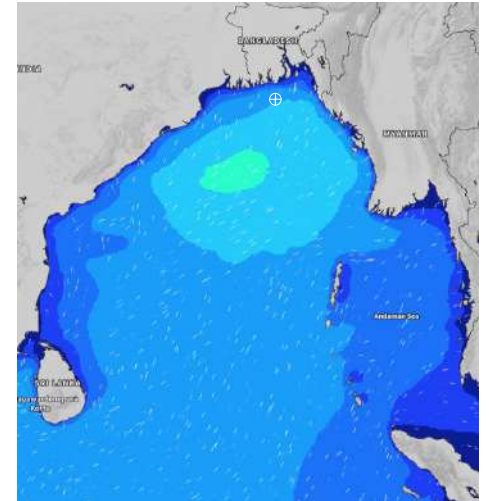
27 June 24 Thu (Probability 60%)



28 June 24 Fri (Probability 50%)



29 June 24 Sat (Probability 50%)



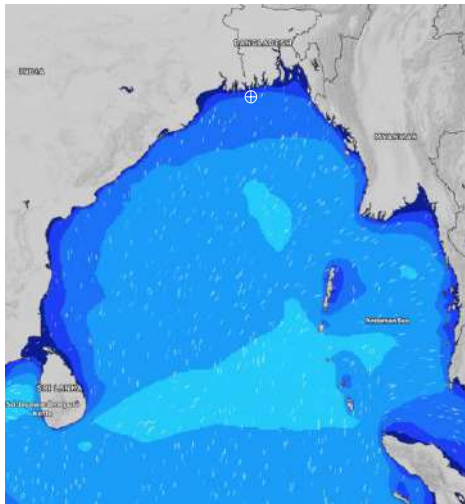
Significant wave height (m)

MARINE WEATHER FORECAST- 10 NM SOUTH OF MONGLA FAIRWAY (Lat 21° 16' N, Long 089° 34' E)

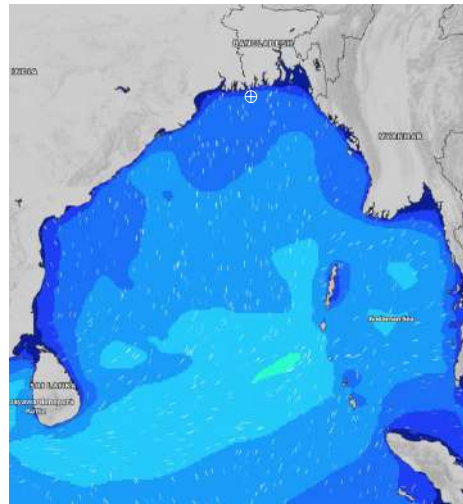
DATE : 22 to 29 June 2024

Date	Time	Max Wind Spd (kts)	Wind Direction	Wave Ht (m)	Sea State	Baro Pressure	Air Temp		Sea Surface Temp	Humidity (%)	Prob of Rain (%)	Sea State	Wave Ht (m)
							Max	Min					
22-06-24	0001	8	SE	1.6	4	1002	32	27	29	90%	23% (0.0 mm)	0	0
	0600	7	SSE	1.5	4	1001			29	88%	20% (0.0 mm)	1	0 - 0.1
	1200	8	SW	1.5	4	1002			30	77%	85% (0.9 mm)	2	0.1 - 0.5
	1800	10	SSW	1.5	4	1000			30	84%	32% (0.2 mm)	3	0.5 - 1.25
23-06-24	0001	12	SSW	1.5	4	1002	32	28	29	91%	22% (0.0 mm)	4	1.25 - 2.5
	0600	7	SSW	1.6	4	1002			29	93%	30% (0.2 mm)	5	2.5 - 4.0
	1200	10	SSW	1.7	4	1002			29	79%	41% (0.4 mm)	6	4.0 - 6.0
	1800	13	SSW	1.6	4	1000			29	80%	14% (0.1 mm)	7	6.0 - 9.0
24-06-24	0001	14	SSW	1.5	4	1002	32	28	29	89%	22% (0.0 mm)	8	9.0 - 14.0
	0600	11	SSW	1.5	4	1002			29	92%	23% (0.0 mm)	9	Over 14.0
	1200	11	SSW	1.4	4	1002			29	77%	39% (0.4 mm)		
	1800	9	SSW	1.5	4	1000			29	80%	12% (0.0 mm)		
25-06-24	0001	15	SSW	1.4	4	1001	33	28	29	89%	22% (0.0 mm)		
	0600	11	S	1.6	4	1000			29	92%	31% (0.2 mm)		
	1200	10	SSE	1.6	4	1000			29	73%	44% (0.4 mm)		
	1800	8	SE	1.6	4	998			29	81%	10% (0.1 mm)		

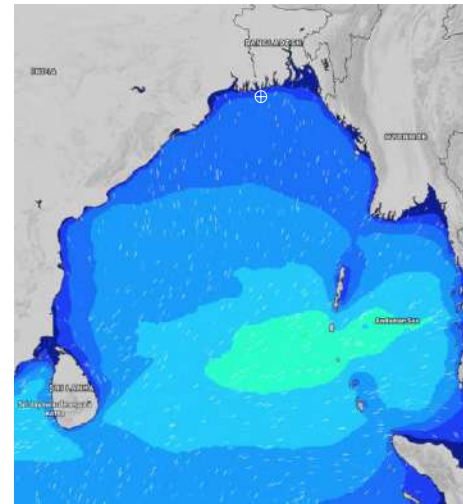
22 June 24 Sat (Probability 98%)



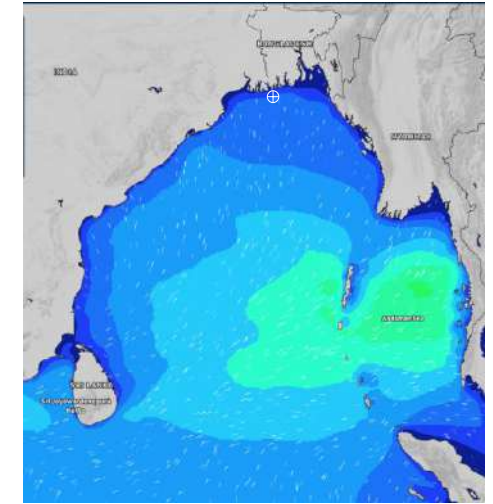
23 June 24 Sun (Probability 95%)



24 June 24 Mon (Probability 90%)



25 June 24 Tue (Probability 80%)



Significant wave height (m)

MARINE WEATHER FORECAST- 10 NM SOUTH OF MONGLA FAIRWAY (Lat 21° 16' N, Long 089° 34' E)

DATE : 22 to 29 June 2024

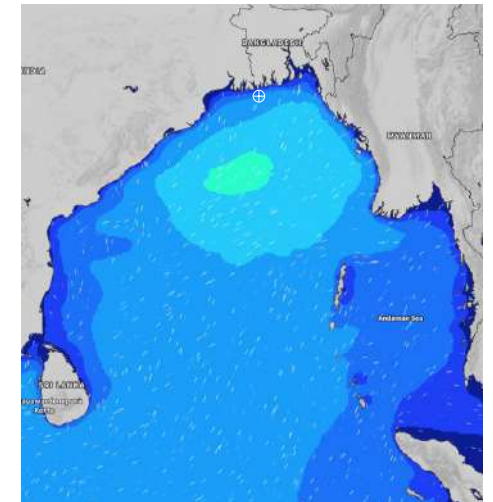
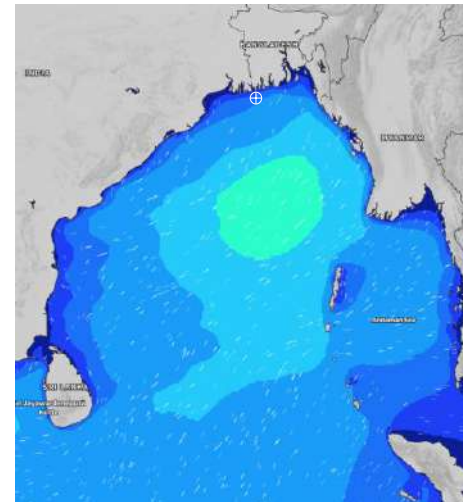
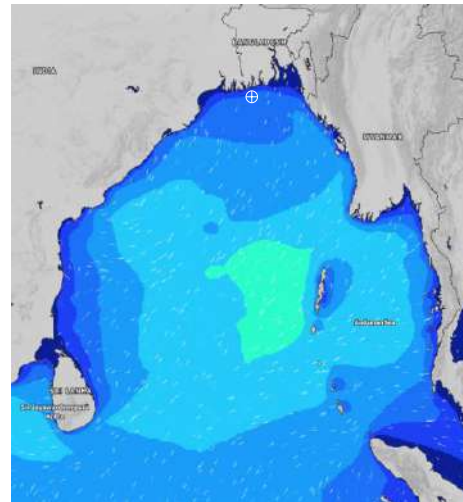
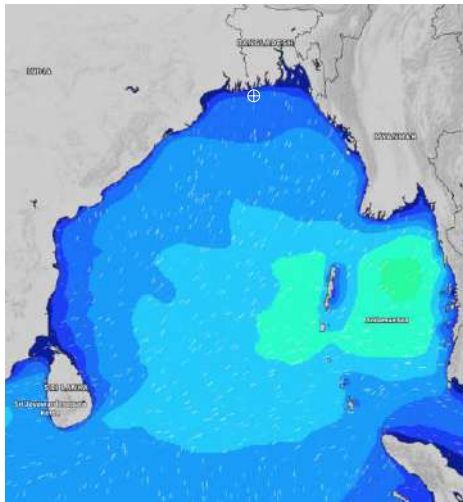
Date	Time	Max Wind Spd (kts)	Wind Direction	Wave Ht (m)	Sea State	Baro Pressure	Air Temp		Sea Surface Temp	Humidity (%)	Prob of Rain (%)	Sea State	Wave Ht (m)
							Max	Min					
26-06-24	0001	11	S	1.4	4	1000	32	28	29	88%	16% (0.0 mm)	0	0
	0600	8	S	1.6	4	999			29	91%	24% (0.0 mm)	1	0 - 0.1
	1200	5	SSE	1.6	4	999			29	75%	60% (0.5 mm)	2	0.1 - 0.5
	1800	8	SE	1.6	4	997			29	81%	12% (0.0 mm)	3	0.5 - 1.25
27-06-24	0001	11	SSE	1.6	4	1000	31	27	29	88%	56% (0.5 mm)	4	1.25 - 2.5
	0600	8	SSE	1.6	4	999			29	90%	62% (0.5 mm)	5	2.5 - 4.0
	1200	9	SE	1.6	4	999			29	75%	46% (0.4 mm)	6	4.0 - 6.0
	1800	12	ESE	1.5	4	998			29	82%	37% (0.2 mm)	7	6.0 - 9.0
28-06-24	0001	12	SSE	1.6	4	999	31	27	29	89%	56% (0.5 mm)	8	9.0 - 14.0
	0600	11	SE	1.7	4	998			29	90%	62% (0.5 mm)	9	Over 14.0
	1200	13	SSE	1.9	4	998			29	76%	46% (0.4 mm)		
	1800	7	S	2.0	4	997			29	82%	37% (0.2 mm)		
29-06-24	0001	15	SSW	2.2	4	999	31	27	29	88%	56% (0.5 mm)		
	0600	13	SSW	2.2	4	998			29	91%	62% (0.5 mm)		
	1200	11	S	2.2	4	999			29	87%	46% (0.4 mm)		
	1800	13	S	2.2	4	998			29	83%	37% (0.2 mm)		

26 June 24 Wed (Probability 70%)

27 June 24 Thu (Probability 60%)

28 June 24 Fri (Probability 50%)

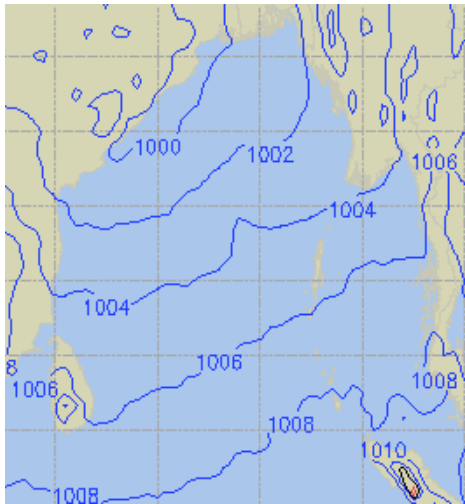
29 June 24 Sat (Probability 50%)



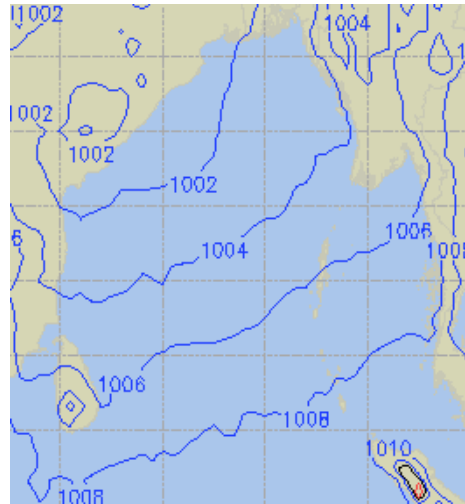
Significant wave height (m)

PREDICTED SURFACE PRESSURE FORECAST (22 to 28 June 2024)

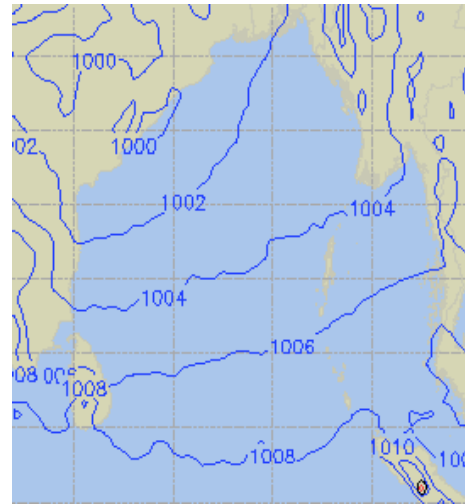
22 June 24 Sat (Probability 98%)



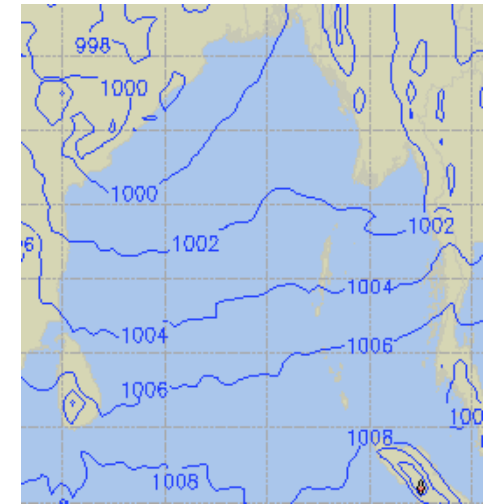
23 June 24 Sun (Probability 95%)



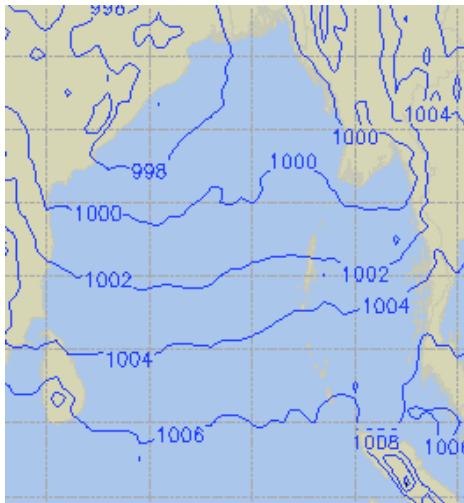
24 June 24 Mon (Probability 90%)



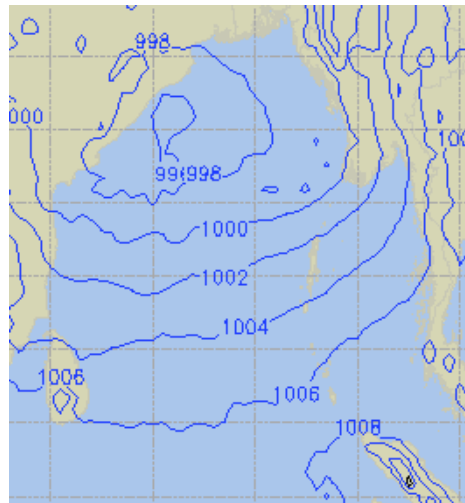
25 June 24 Tue (Probability 80%)



26 June 24 Wed (Probability 70%)



27 June 24 Thu (Probability 60%)



28 June 24 Fri (Probability 50%)

