

**MARINE WEATHER FORECAST- NEAR AUTHORITY BUOY (Lat 22° 12'N, Long 091° 38'E)**

**DATE : 22 to 29 May 2024**

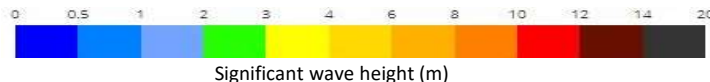
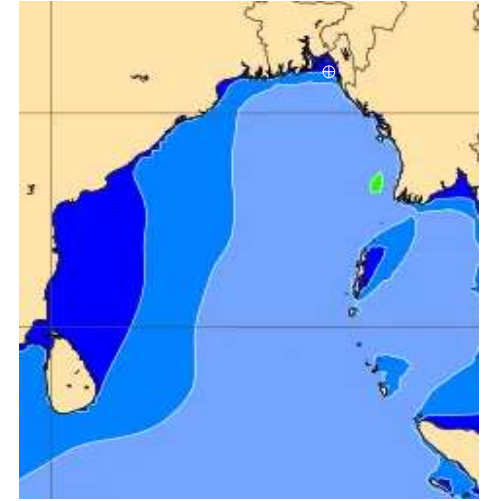
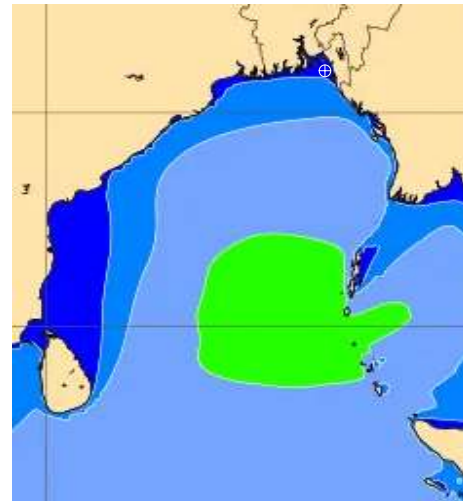
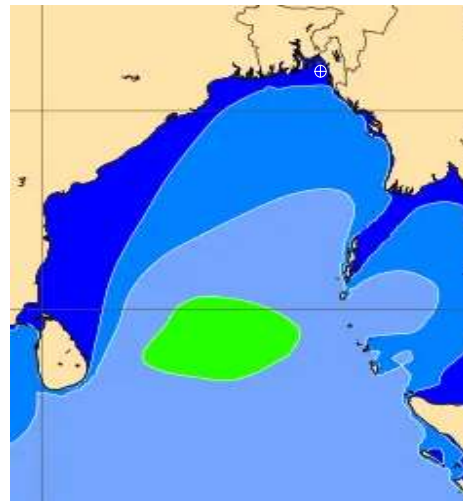
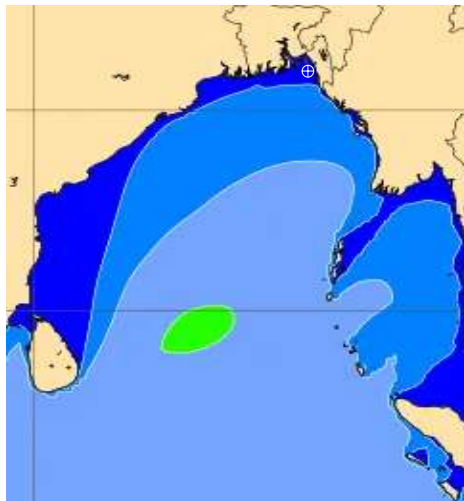
Date	Time	Max Wind Spd (kts)	Wind Direction	Wave Ht (m)	Sea State	Baro Pressure	Air Temp		Sea Surface Temp	Humidity (%)	Prob of Rain (%)	Sea State	Wave Ht (m)
							Max	Min					
22-05-24	0001	9	S	0.1	1	1005	32	24	29	83%	14% (0.0 mm)	0	0
	0600	8	E	0.1	1	1006			29	94%	12% (0.0 mm)	1	0 - 0.1
	1200	10	W	0.2	2	1004			30	75%	16% (0.0 mm)	2	0.1 - 0.5
	1800	14	SSW	0.2	2	1001			30	86%	14% (0.0 mm)	3	0.5 - 1.25
23-05-24	0001	12	SSW	0.2	2	1004	32	24	29	82%	15% (0.0 mm)	4	1.25 - 2.5
	0600	7	E	0.1	1	1005			29	94%	16% (0.0 mm)	5	2.5 - 4.0
	1200	10	W	0.2	2	1001			30	75%	15% (0.0 mm)	6	4.0 - 6.0
	1800	14	SSW	0.3	2	999			30	84%	14% (0.0 mm)	7	6.0 - 9.0
24-05-24	0001	7	SE	0.1	1	1001	32	24	29	86%	16% (0.0 mm)	8	9.0 - 14.0
	0600	5	ENE	0.1	1	1001			29	95%	14% (0.0 mm)	9	Over 14.0
	1200	13	W	0.3	2	998			30	72%	18% (0.0 mm)		
	1800	19	SSW	0.3	2	996			30	84%	17% (0.0 mm)		
25-05-24	0001	7	SE	0.1	1	997	32	24	29	83%	19% (0.0 mm)		
	0600	6	NNE	0.1	1	996			29	95%	18% (0.0 mm)		
	1200	9	W	0.1	1	997			30	74%	17% (0.0 mm)		
	1800	12	SSW	0.3	2	995			30	86%	19% (0.0 mm)		

**22 May 24 Wed (Probability 98%)**

**23 May 24 Thu (Probability 95%)**

**24 May 24 Fri (Probability 90%)**

**25 May 24 Sat (Probability 80%)**



Significant wave height (m)

**MARINE WEATHER FORECAST- NEAR AUTHORITY BUOY (Lat 22° 12'N, Long 091° 38'E)**

**DATE : 22 to 29 May 2024**

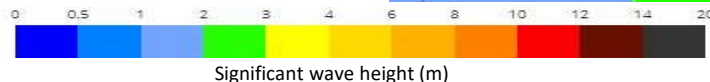
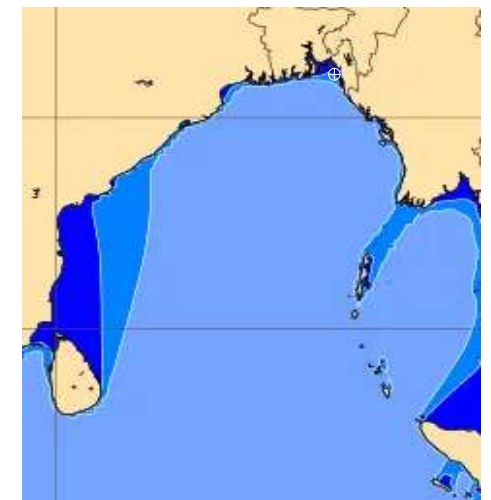
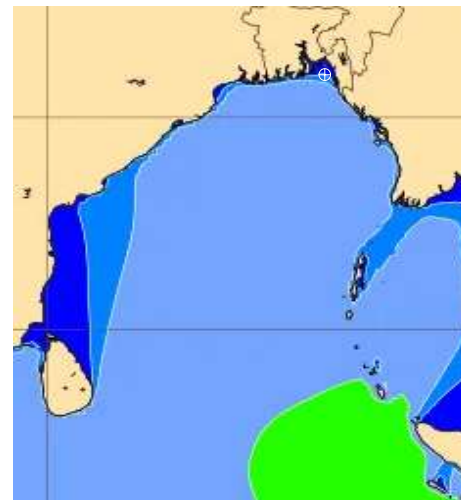
Date	Time	Max Wind Spd (kts)	Wind Direction	Wave Ht (m)	Sea State	Baro Pressure	Air Temp		Sea Surface Temp	Humidity (%)	Prob of Rain (%)	Sea State	Wave Ht (m)
							Max	Min					
26-05-24	0001	36	ENE	0.5	2	992	30	23	29	89%	59% (0.0 mm)	0	0
	0600	66	SE	1.3	4	999			28	97%	57% (0.0 mm)	1	0 - 0.1
	1200	47	SSW	1.2	3	994			29	78%	46% (0.0 mm)	2	0.1 - 0.5
	1800	32	S	1.1	3	996			29	89%	38% (0.0 mm)	3	0.5 - 1.25
27-05-24	0001	39	S	1.2	3	996	32	24	29	88%	29% (0.0 mm)	4	1.25 - 2.5
	0600	37	SSW	1.0	3	997			28	99%	16% (0.0 mm)	5	2.5 - 4.0
	1200	35	SW	1.0	3	998			29	78%	25% (0.0 mm)	6	4.0 - 6.0
	1800	22	SSE	0.9	3	999			29	89%	65% (0.0 mm)	7	6.0 - 9.0
28-05-24	0001	29	SSE	0.9	3	999	32	24	29	89%	37% (0.0 mm)	8	9.0 - 14.0
	0600	27	SSE	0.9	3	998			28	98%	40% (0.0 mm)	9	Over 14.0
	1200	20	SSE	0.9	3	999			29	79%	58% (0.0 mm)		
	1800	18	SE	0.8	3	997			29	88%	54% (0.0 mm)		
29-05-24	0001	27	SE	0.8	3	999	32	24	29	89%	39% (0.0 mm)		
	0600	25	SE	0.9	3	998			28	98%	42% (0.0 mm)		
	1200	22	SSE	0.9	3	999			29	77%	24% (0.0 mm)		
	1800	19	SSE	0.8	3	997			29	89%	32% (0.0 mm)		

**26 May 24 Sun (Probability 70%)**

**27 May 24 Mon (Probability 60%)**

**28 May 24 Tue (Probability 50%)**

**29 May 24 Wed (Probability 50%)**



Significant wave height (m)

**MARINE WEATHER FORECAST- 20 NM WEST OF ELEPHANT POINT (Lat 21° 10'N, Long 091° 42'E)**

**DATE : 22 to 29 May 2024**

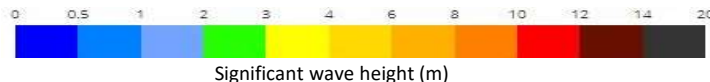
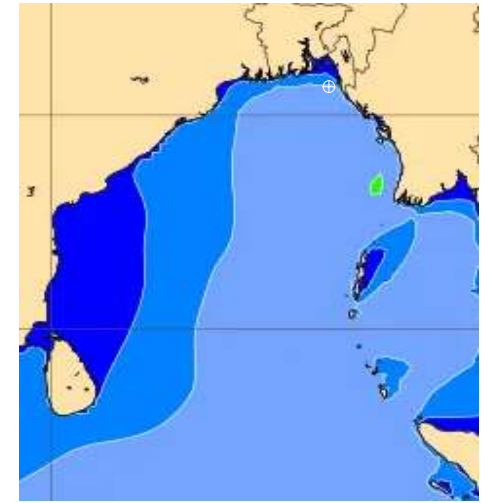
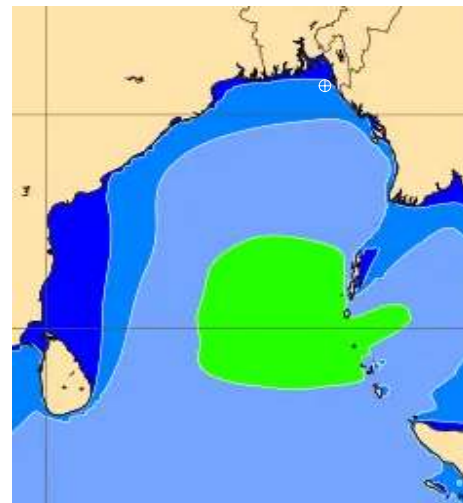
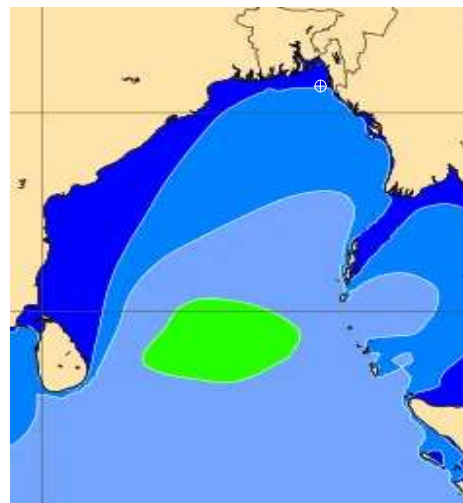
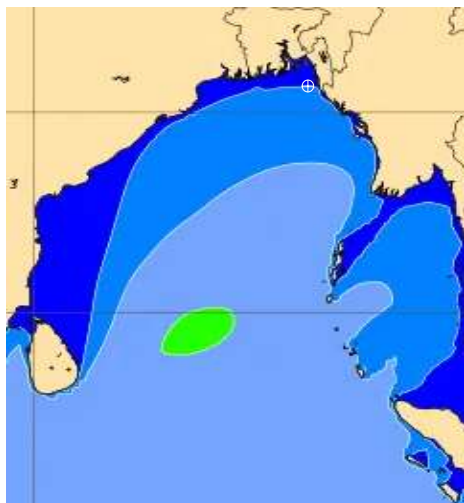
Date	Time	Max Wind Spd (kts)	Wind Direction	Wave Ht (m)	Sea State	Baro Pressure	Air Temp		Sea Surface Temp	Humidity (%)	Prob of Rain (%)	Sea State	Wave Ht (m)
							Max	Min					
22-05-24	0001	6	S	0.6	3	1006	32	24	30	87%	18% (0.0 mm)	0	0
	0600	5	ENE	0.6	3	1006			29	95%	19% (0.0 mm)	1	0 - 0.1
	1200	7	W	0.6	3	1004			30	76%	16% (0.0 mm)	2	0.1 - 0.5
	1800	8	WSW	0.6	3	1001			30	88%	17% (0.0 mm)	3	0.5 - 1.25
23-05-24	0001	9	S	0.6	3	1004	32	24	30	87%	18% (0.0 mm)	4	1.25 - 2.5
	0600	6	E	0.7	3	1003			29	95%	19% (0.0 mm)	5	2.5 - 4.0
	1200	5	W	0.7	3	1002			30	73%	18% (0.0 mm)	6	4.0 - 6.0
	1800	10	SSW	0.8	3	1000			30	85%	15% (0.0 mm)	7	6.0 - 9.0
24-05-24	0001	9	SSE	0.9	3	1001	32	24	30	84%	17% (0.0 mm)	8	9.0 - 14.0
	0600	9	NE	1.0	3	1000			29	96%	15% (0.0 mm)	9	Over 14.0
	1200	14	NW	1.3	4	998			30	78%	16% (0.0 mm)		
	1800	7	WSW	1.2	3	996			30	87%	18% (0.0 mm)		
25-05-24	0001	7	E	1.2	3	997	32	24	30	85%	17% (0.0 mm)		
	0600	11	E	1.2	3	996			29	96%	15% (0.0 mm)		
	1200	15	SW	1.4	4	997			30	78%	16% (0.0 mm)		
	1800	17	WSW	1.4	4	994			30	89%	16% (0.0 mm)		

**22 May 24 Wed (Probability 98%)**

**23 May 24 Thu (Probability 95%)**

**24 May 24 Fri (Probability 90%)**

**25 May 24 Sat (Probability 80%)**



Significant wave height (m)



**MARINE WEATHER FORECAST- 20 NM WEST OF ELEPHANT POINT (Lat 21° 10'N, Long 091° 42'E)**

**DATE : 22 to 29 May 2024**

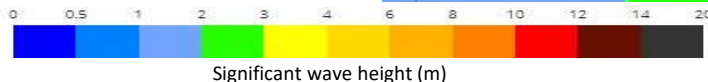
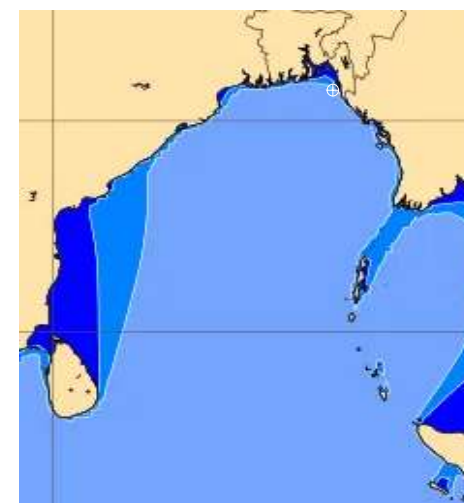
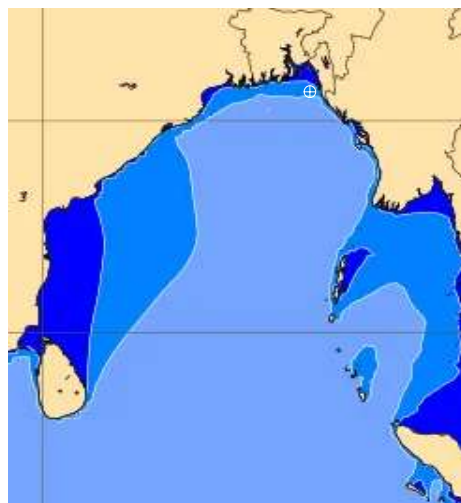
Date	Time	Max Wind Spd (kts)	Wind Direction	Wave Ht (m)	Sea State	Baro Pressure	Air Temp		Sea Surface Temp	Humidity (%)	Prob of Rain (%)	Sea State	Wave Ht (m)
							Max	Min					
26-05-24	0001	74	SE	6.0	6	990	30	23	29	89%	59% (0.0 mm)	0	0
	0600	52	S	4.9	6	993			29	98%	57% (0.0 mm)	1	0 - 0.1
	1200	38	SSW	3.6	5	997			30	77%	46% (0.0 mm)	2	0.1 - 0.5
	1800	25	SSW	2.9	5	997			29	86%	38% (0.0 mm)	3	0.5 - 1.25
27-05-24	0001	31	SSW	2.9	5	998	32	24	29	88%	27% (0.0 mm)	4	1.25 - 2.5
	0600	28	SSW	2.7	5	998			29	99%	35% (0.0 mm)	5	2.5 - 4.0
	1200	24	SSW	2.4	5	1000			29	76%	28% (0.0 mm)	6	4.0 - 6.0
	1800	22	SSE	2.2	4	999			29	88%	29% (0.0 mm)	7	6.0 - 9.0
28-05-24	0001	25	SE	2.3	5	999	32	24	29	87%	28% (0.0 mm)	8	9.0 - 14.0
	0600	21	SSE	2.2	4	999			29	99%	35% (0.0 mm)	9	Over 14.0
	1200	19	SE	2.1	4	998			30	78%	18% (0.0 mm)		
	1800	16	SE	2.0	4	998			29	87%	25% (0.0 mm)		
29-05-24	0001	25	SE	2.2	4	999	32	24	29	89%	28% (0.0 mm)		
	0600	24	SE	2.3	5	999			29	98%	26% (0.0 mm)		
	1200	26	SE	2.3	5	1000			30	79%	19% (0.0 mm)		
	1800	20	SSE	2.2	4	999			29	86%	19% (0.0 mm)		

**26 May 24 Sun (Probability 70%)**

**27 May 24 Mon (Probability 60%)**

**28 May 24 Tue (Probability 50%)**

**29 May 24 Wed (Probability 50%)**



Significant wave height (m)

**MARINE WEATHER FORECAST- 15 NM WEST OF ST. MARTIN'S LIGHT HOUSE (Lat 20° 37'N, Long 092° 03'E)**

**DATE : 22 to 29 May 2024**

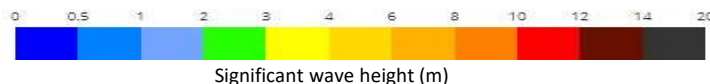
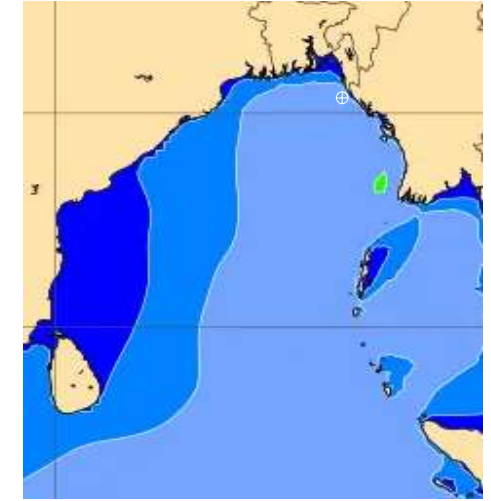
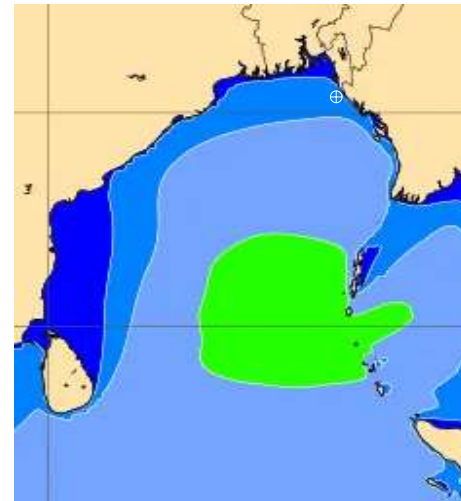
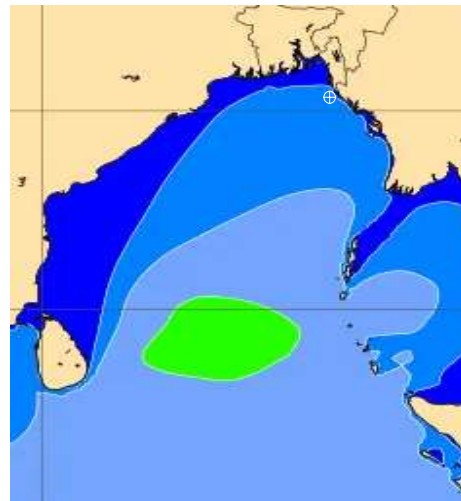
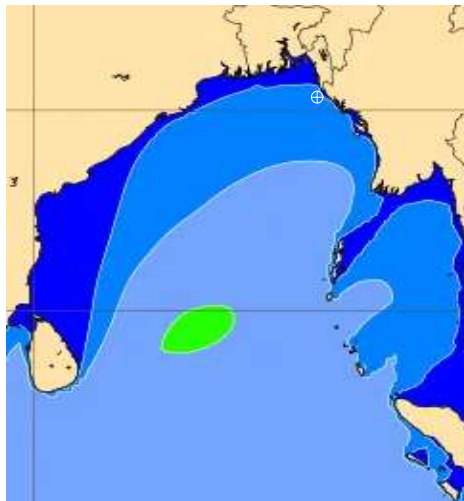
Date	Time	Max Wind Spd (kts)	Wind Direction	Wave Ht (m)	Sea State	Baro Pressure	Air Temp		Sea Surface Temp	Humidity (%)	Prob of Rain(%)	Sea State	Wave Ht (m)
							Max	Min					
22-05-24	0001	5	SSE	0.7	3	1006	32	24	30	88%	19% (0.0 mm)	0	0
	0600	4	NNW	0.8	3	1005			30	97%	17% (0.0 mm)	1	0 - 0.1
	1200	9	SE	0.8	3	1004			31	76%	18% (0.0 mm)	2	0.1 - 0.5
	1800	8	SW	0.8	3	1001			31	89%	16% (0.0 mm)	3	0.5 - 1.25
23-05-24	0001	7	SE	0.8	3	1004	32	24	30	88%	18% (0.0 mm)	4	1.25 - 2.5
	0600	6	ESE	0.9	3	1003			30	97%	19% (0.0 mm)	5	2.5 - 4.0
	1200	7	SSE	1.0	3	1002			31	78%	18% (0.0 mm)	6	4.0 - 6.0
	1800	6	ESE	1.0	3	1000			31	86%	17% (0.0 mm)	7	6.0 - 9.0
24-05-24	0001	4	SE	1.3	4	1001	32	24	30	88%	29% (0.0 mm)	8	9.0 - 14.0
	0600	11	E	1.5	4	1000			30	99%	28% (0.0 mm)	9	Over 14.0
	1200	6	N	1.6	4	998			31	78%	27% (0.0 mm)		
	1800	8	NNW	1.7	4	996			31	87%	39% (0.0 mm)		
25-05-24	0001	16	ENE	1.7	4	997	32	24	30	86%	28% (0.0 mm)		
	0600	35	NE	2.3	5	996			30	98%	26% (0.0 mm)		
	1200	38	ENE	2.6	5	997			31	77%	28% (0.0 mm)		
	1800	41	NW	2.8	5	994			31	89%	39% (0.0 mm)		

**22 May 24 Wed (Probability 98%)**

**23 May 24 Thu (Probability 95%)**

**24 May 24 Fri (Probability 90%)**

**25 May 24 Sat (Probability 80%)**



Significant wave height (m)

**MARINE WEATHER FORECAST- 15 NM WEST OF ST. MARTIN'S LIGHT HOUSE (Lat 20° 37'N, Long 092° 03'E)**

**DATE : 22 to 29 May 2024**

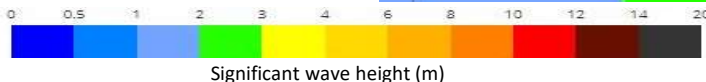
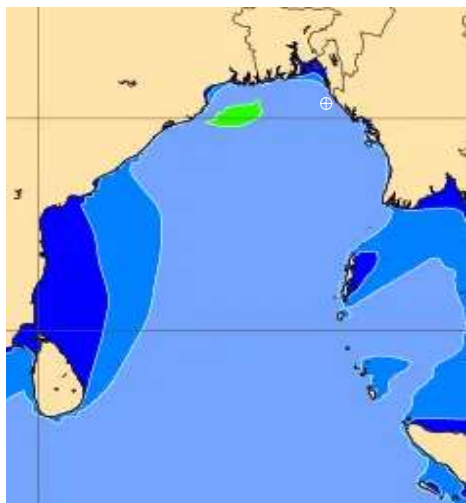
Date	Time	Max Wind Spd (kts)	Wind Direction	Wave Ht (m)	Sea State	Baro Pressure	Air Temp		Sea Surface Temp	Humidity (%)	Prob of Rain (%)	Sea State	Wave Ht (m)
							Max	Min					
26-05-24	0001	63	S	7.6	7	989	30	23	29	88%	58% (0.0 mm)	0	0
	0600	40	SSW	5.4	6	995			28	97%	56% (0.0 mm)	1	0 - 0.1
	1200	28	SW	3.6	5	999			29	79%	47% (0.0 mm)	2	0.1 - 0.5
	1800	34	SW	3.5	5	998			29	86%	38% (0.0 mm)	3	0.5 - 1.25
27-05-24	0001	28	S	3.2	5	1000	32	24	30	89%	52% (0.0 mm)	4	1.25 - 2.5
	0600	27	SSW	3.2	5	998			30	98%	49% (0.0 mm)	5	2.5 - 4.0
	1200	24	SW	3.0	5	1001			31	77%	52% (0.0 mm)	6	4.0 - 6.0
	1800	19	SSW	2.8	5	999			31	88%	43% (0.0 mm)	7	6.0 - 9.0
28-05-24	0001	19	SSE	2.7	5	1001	32	24	30	89%	42% (0.0 mm)	8	9.0 - 14.0
	0600	21	S	2.7	5	998			30	98%	57% (0.0 mm)	9	Over 14.0
	1200	17	S	2.6	5	1000			31	79%	45% (0.0 mm)		
	1800	15	S	2.6	5	998			31	89%	43% (0.0 mm)		
29-05-24	0001	17	SE	2.6	5	1000	32	24	30	88%	35% (0.0 mm)		
	0600	15	SSE	2.7	5	998			30	99%	36% (0.0 mm)		
	1200	14	SSE	2.7	5	999			31	78%	30% (0.0 mm)		
	1800	16	SSE	2.7	5	998			31	89%	29% (0.0 mm)		

**26 May 24 Sun (Probability 70%)**

**27 May 24 Mon (Probability 60%)**

**28 May 24 Tue (Probability 50%)**

**29 May 24 Wed (Probability 50%)**



Significant wave height (m)



**MARINE WEATHER FORECAST- 40 NM ESE OF PAYRA FAIRWAY (Lat 21° 07'N, Long 090° 45'E)**

**DATE : 22 to 29 May 2024**

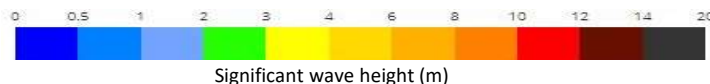
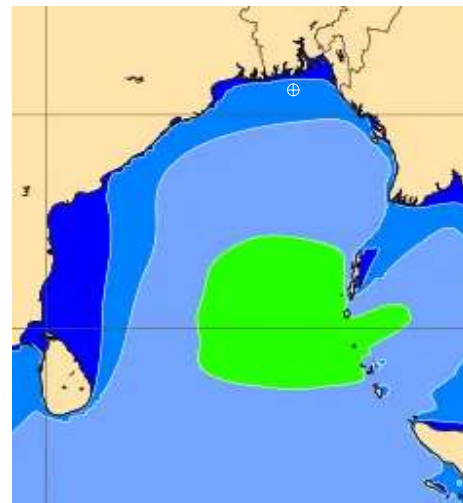
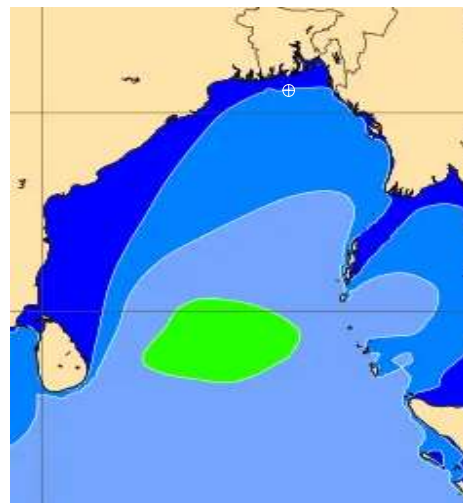
Date	Time	Max Wind Spd (kts)	Wind Direction	Wave Ht (m)	Sea State	Baro Pressure	Air Temp		Sea Surface Temp	Humidity (%)	Prob of Rain (%)	Sea State	Wave Ht (m)
							Max	Min					
22-05-24	0001	7	SSW	0.7	3	1005	34	25	30	87%	18% (0.0 mm)	0	0
	0600	5	SW	0.8	3	1005			30	98%	17% (0.0 mm)	1	0 - 0.1
	1200	6	W	0.8	3	1006			31	79%	16% (0.0 mm)	2	0.1 - 0.5
	1800	6	SW	0.8	3	1002			31	86%	18% (0.0 mm)	3	0.5 - 1.25
23-05-24	0001	7	S	0.8	3	1004	34	25	30	88%	19% (0.0 mm)	4	1.25 - 2.5
	0600	8	E	0.9	3	1003			30	97%	15% (0.0 mm)	5	2.5 - 4.0
	1200	7	ESE	0.9	3	1004			31	78%	17% (0.0 mm)	6	4.0 - 6.0
	1800	8	S	0.9	3	1000			31	89%	16% (0.0 mm)	7	6.0 - 9.0
24-05-24	0001	11	SSE	1.2	3	1001	34	25	30	85%	19% (0.0 mm)	8	9.0 - 14.0
	0600	5	NE	1.4	4	1000			30	97%	18% (0.0 mm)	9	Over 14.0
	1200	8	NNE	1.5	4	999			31	76%	17% (0.0 mm)		
	1800	6	E	1.6	4	998			31	88%	19% (0.0 mm)		
25-05-24	0001	3	WNW	1.8	4	997	34	25	30	89%	18% (0.0 mm)		
	0600	10	NE	1.8	4	996			30	97%	16% (0.0 mm)		
	1200	15	N	1.9	4	997			31	75%	18% (0.0 mm)		
	1800	16	NNW	1.9	4	995			31	88%	17% (0.0 mm)		

**22 May 24 Wed (Probability 98%)**

**23 May 24 Thu (Probability 95%)**

**24 May 24 Fri (Probability 90%)**

**25 May 24 Sat (Probability 80%)**



Significant wave height (m)

**MARINE WEATHER FORECAST- 40 NM ESE OF PAYRA FAIRWAY (Lat 21° 07' N, Long 090° 45' E)**

**DATE : 22 to 29 May 2024**

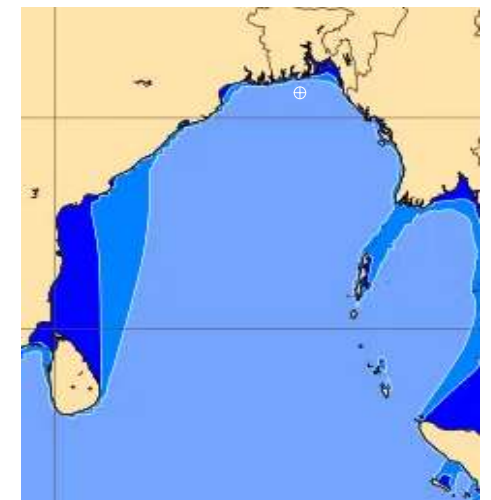
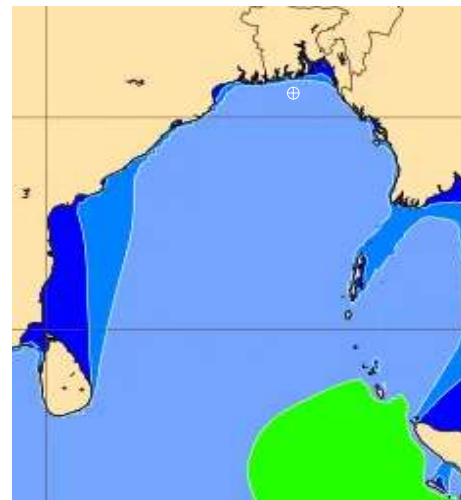
Date	Time	Max Wind Spd (kts)	Wind Direction	Wave Ht (m)	Sea State	Baro Pressure	Air Temp		Sea Surface Temp	Humidity (%)	Prob of Rain (%)	Sea State	Wave Ht (m)
							Max	Min					
26-05-24	0001	60	NW	6.3	7	990	32	24	30	89%	56% (0.0 mm)	0	0
	0600	53	SW	6.5	7	989			30	98%	58% (0.0 mm)	1	0 - 0.1
	1200	37	SW	4.4	6	996			31	79%	47% (0.0 mm)	2	0.1 - 0.5
	1800	30	SSW	3.6	5	995			31	88%	38% (0.0 mm)	3	0.5 - 1.25
27-05-24	0001	26	SW	3.4	5	998	33	24	30	87%	29% (0.0 mm)	4	1.25 - 2.5
	0600	25	SW	3.2	5	998			30	99%	25% (0.0 mm)	5	2.5 - 4.0
	1200	24	SSW	3.2	5	999			31	78%	29% (0.0 mm)	6	4.0 - 6.0
	1800	21	S	3.1	5	997			31	87%	26% (0.0 mm)	7	6.0 - 9.0
28-05-24	0001	27	S	2.8	5	998	33	24	30	88%	29% (0.0 mm)	8	9.0 - 14.0
	0600	24	SSW	2.8	5	997			30	99%	25% (0.0 mm)	9	Over 14.0
	1200	19	S	2.8	5	998			31	78%	19% (0.0 mm)		
	1800	15	S	2.7	5	996			31	87%	28% (0.0 mm)		
29-05-24	0001	20	S	2.7	5	998	33	24	30	88%	27% (0.0 mm)		
	0600	23	S	2.8	5	997			30	99%	26% (0.0 mm)		
	1200	22	SSE	2.8	5	998			31	78%	18% (0.0 mm)		
	1800	24	SSE	2.8	5	996			31	89%	29% (0.0 mm)		

**26 May 24 Sun (Probability 70%)**

**27 May 24 Mon (Probability 60%)**

**28 May 24 Tue (Probability 50%)**

**29 May 24 Wed (Probability 50%)**



0 0.5 1 2 3 4 6 8 10 12 14 20



Significant wave height (m)



**MARINE WEATHER FORECAST- 10 NM SOUTH OF MONGLA FAIRWAY (Lat 21° 16'N, Long 089° 34'E)**

**DATE : 22 to 29 May 2024**

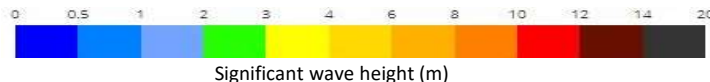
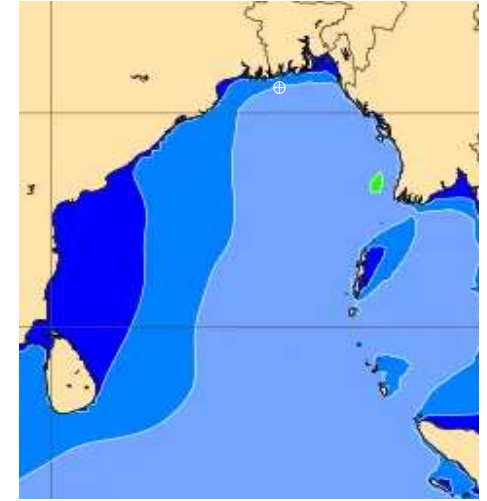
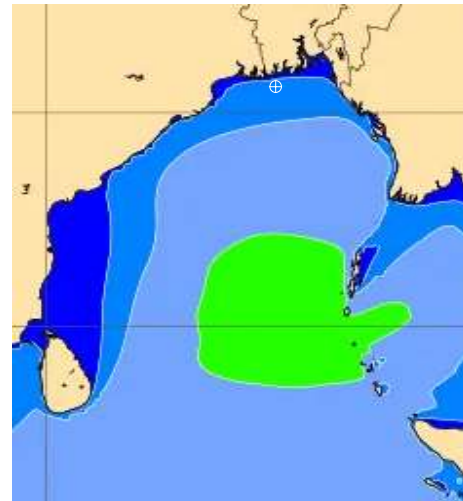
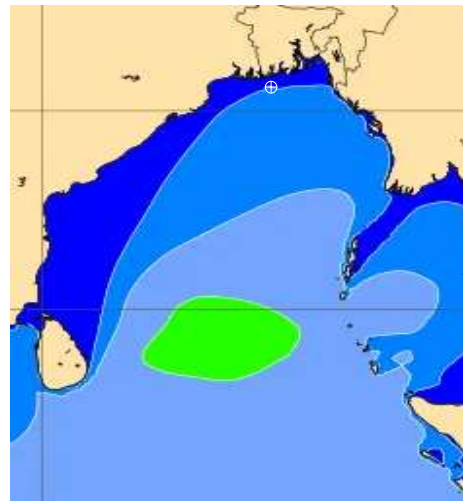
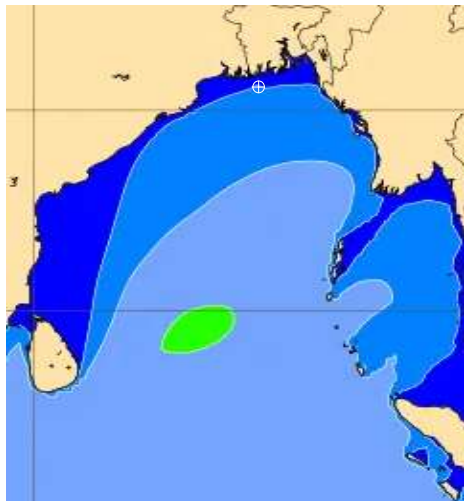
Date	Time	Max Wind Spd (kts)	Wind Direction	Wave Ht (m)	Sea State	Baro Pressure	Air Temp		Sea Surface Temp	Humidity (%)	Prob of Rain (%)	Sea State	Wave Ht (m)
							Max	Min					
22-05-24	0001	8	SW	0.7	3	1005	34	25	30	88%	16% (0.0 mm)	0	0
	0600	9	SSW	0.7	3	1005			30	97%	17% (0.0 mm)	1	0 - 0.1
	1200	6	SW	0.8	3	1005			30	79%	18% (0.0 mm)	2	0.1 - 0.5
	1800	7	SSW	0.8	3	1001			30	86%	15% (0.0 mm)	3	0.5 - 1.25
23-05-24	0001	10	SW	0.8	3	1004	34	25	30	88%	17% (0.0 mm)	4	1.25 - 2.5
	0600	8	SE	0.8	3	1002			30	97%	26% (0.0 mm)	5	2.5 - 4.0
	1200	7	ESE	0.9	3	1003			30	78%	19% (0.0 mm)	6	4.0 - 6.0
	1800	9	SE	0.8	3	1000			30	86%	15% (0.0 mm)	7	6.0 - 9.0
24-05-24	0001	6	SSW	1.0	3	1001	34	25	30	88%	18% (0.0 mm)	8	9.0 - 14.0
	0600	8	SW	1.3	4	1000			30	97%	27% (0.0 mm)	9	Over 14.0
	1200	7	SSW	1.4	4	999			31	79%	19% (0.0 mm)		
	1800	9	SSW	1.4	4	997			31	88%	16% (0.0 mm)		
25-05-24	0001	11	SSW	1.4	4	997	34	25	30	87%	18% (0.0 mm)		
	0600	6	SW	1.5	4	996			30	98%	27% (0.0 mm)		
	1200	8	SW	1.5	4	997			31	77%	19% (0.0 mm)		
	1800	11	SSW	1.6	4	995			31	89%	16% (0.0 mm)		

**22 May 24 Wed (Probability 98%)**

**23 May 24 Thu (Probability 95%)**

**24 May 24 Fri (Probability 90%)**

**25 May 24 Sat (Probability 80%)**



Significant wave height (m)

**MARINE WEATHER FORECAST- 10 NM SOUTH OF MONGLA FAIRWAY (Lat 21° 16'N, Long 089° 34'E)**

**DATE : 22 to 29 May 2024**

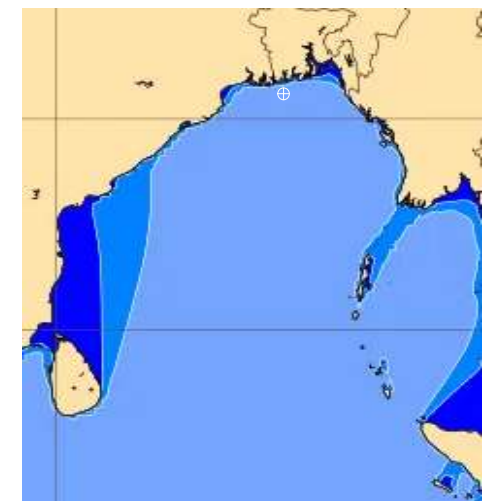
Date	Time	Max Wind Spd (kts)	W8nd Direction	Wave Ht (m)	Sea State	Baro Pressure	Air Temp		Sea Surface Temp	Humidity (%)	Prob of Rain (%)	Sea State	Wave Ht (m)
							Max	Min					
26-05-24	0001	23	W	2.3	5	991	32	24	29	89%	59% (0.0 mm)	0	0
	0600	29	W	3.1	5	993			29	97%	58% (0.0 mm)	1	0 - 0.1
	1200	31	WSW	3.1	5	995			30	78%	47% (0.0 mm)	2	0.1 - 0.5
	1800	33	WSW	3.2	5	995			30	86%	38% (0.0 mm)	3	0.5 - 1.25
27-05-24	0001	27	SW	3.1	5	996	33	24	29	88%	45% (0.0 mm)	4	1.25 - 2.5
	0600	16	W	2.8	5	997			29	97%	42% (0.0 mm)	5	2.5 - 4.0
	1200	22	SW	2.7	5	998			30	78%	65% (0.0 mm)	6	4.0 - 6.0
	1800	20	SSW	2.6	5	997			30	89%	42% (0.0 mm)	7	6.0 - 9.0
28-05-24	0001	26	SSW	2.7	5	997	33	24	30	88%	35% (0.0 mm)	8	9.0 - 14.0
	0600	19	SSW	2.7	5	997			30	97%	36% (0.0 mm)	9	Over 14.0
	1200	17	SSW	2.6	5	996			31	78%	48% (0.0 mm)		
	1800	14	S	2.6	5	995			31	89%	32% (0.0 mm)		
29-05-24	0001	16	SSE	2.6	5	998	33	24	30	88%	26% (0.0 mm)		
	0600	23	S	2.6	5	997			30	96%	19% (0.0 mm)		
	1200	18	SSE	2.6	5	998			31	78%	18% (0.0 mm)		
	1800	20	SSW	2.6	5	996			31	87%	20% (0.0 mm)		

**26 May 24 Sun (Probability 70%)**

**27 May 24 Mon (Probability 60%)**

**28 May 24 Tue (Probability 50%)**

**29 May 24 Wed (Probability 50%)**



0 0.5 1 2 3 4 6 8 10 12 14 20

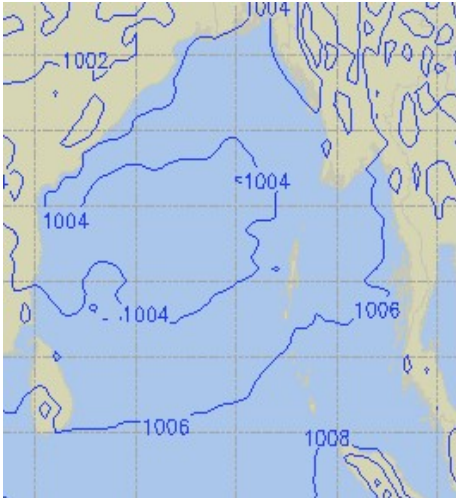


Significant wave height (m)

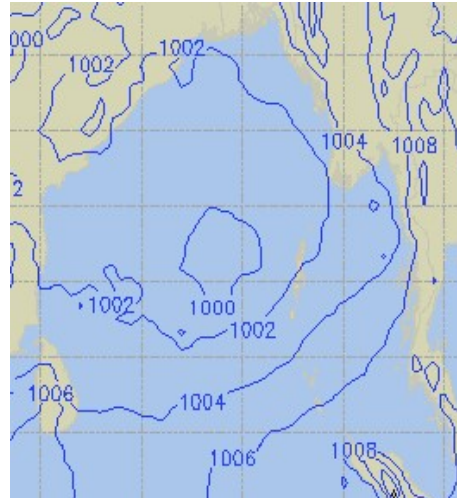


## PREDICTED SURFACE PRESSURE FORECAST (22 to 28 May 2024)

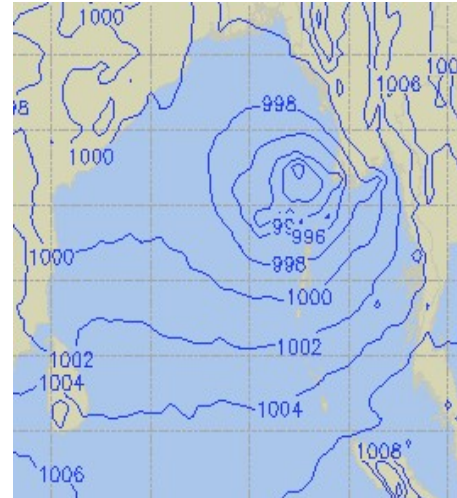
**22 May 24 Wed (Probability 98%)**



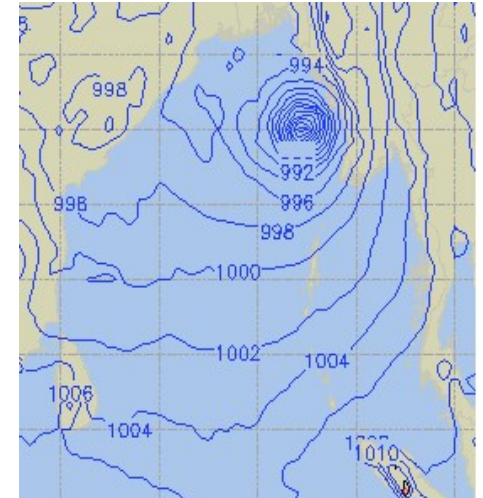
**23 May 24 Thu (Probability 95%)**



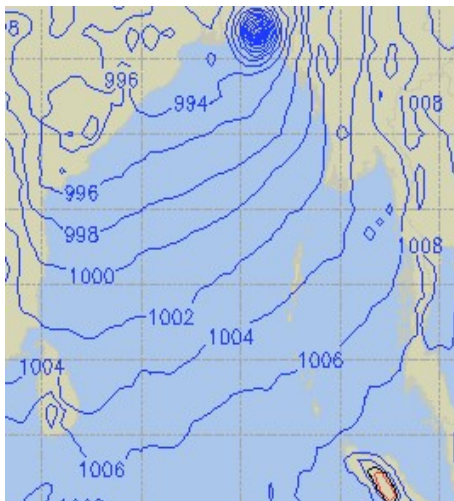
**24 May 24 Fri (Probability 90%)**



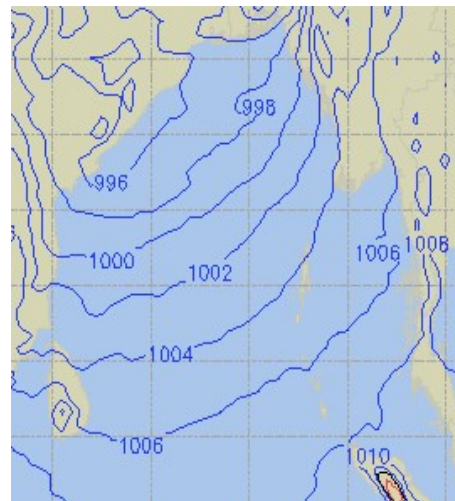
**25 May 24 Sat (Probability 80%)**



**26 May 24 Sun (Probability 70%)**



**27 May 24 Mon (Probability 60%)**



**28 May 24 Tue (Probability 60%)**

