



SUMMARY OF MARINE WEATHER FORECAST
COASTAL AREA OF BANGLADESH
DATE: 22 to 29 April 2026



Fleet Forecast	The trough of low lies from West Bengal to North Bay.
Wind Direction, Speed	South-West/Southerly 10-15 kts, temporary gusting to 25 kts.
Wave Height & Sea State	Ctg Outer Anchorage: 0.2 to 0.8 m (Sea state: 2 to 3) Abeam to Cox's Bazar: 0.9 to 1.7 m (Sea state: 3 to 4) St. Martin's Island: 0.9 to 1.7 m (Sea state 3 to 4) Payra Fairway Buoy: 1.1 to 2.4 m (Sea state: 3 to 4) Mongla Fairway Buoy: 1.1 to 2.4 m (Sea state: 3 to 4) Outer EEZ: 1.2 to 2.1 m (Sea state: 3 to 4)
Sea Surface Temperature	27° C - 30° C
Baro Pressure	1005-1010 mb
Rainfall	Partly cloudy to cloudy sky rain/thunder showers with gusty wind & lightning flashes is likely to occur over Bay of Bengal and adjoining area.
Fog & Visibility	Hazy condition over the Bay of Bengal & coastal area, Visibility 1.5 – 5.0 km

Marine Weather Outlook (22 to 29 April 2026):

- Partly cloudy to cloudy sky rain/thunder showers with gusty wind & lightning flashes is likely to occur over Bay of Bengal and adjoining area.
- Hazy condition over the Bay of Bengal & coastal area during early morning.
- Rain/thunder showers activity may increase.



MARINE WEATHER FORECAST (22 to 29 April 2026) PATENGA POINT (22° 12' N, 091° 38' E)



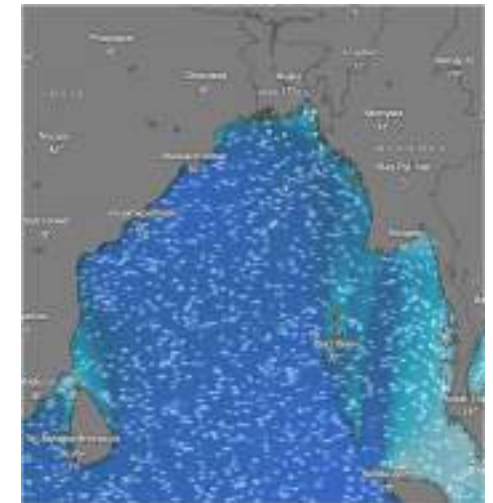
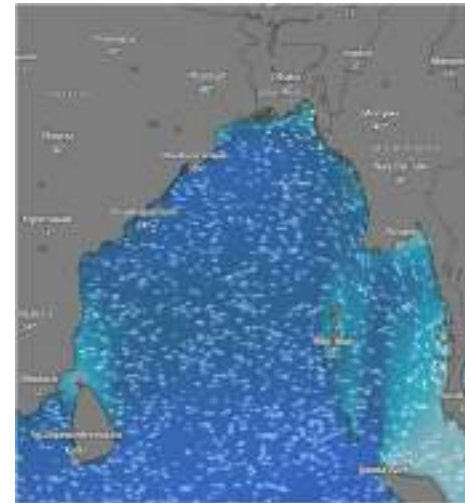
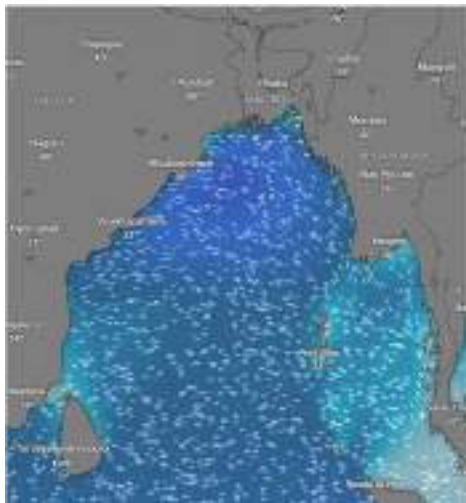
Date	Time	Air Temp (°C)		Sea Surface Temp (°C)	Baro Pressure (mbar)	Wind Direction	Wind Spd (kts)		Wave Ht (m)	Sea State	Humidity (%)	Prob of Rain (%)	Amount of Rain (mm)
		Max	Min				Gusting	Avg					
22-04-26 (Wednesday)	0001	32	26	28	1007	SSE	16	12	0.6	3	89	08	0.0
	0600			27	1008	SSE	15	10	0.5	3	90	12	0.0
	1200			30	1006	SSW	20	13	0.5	3	75	05	0.0
	1800			29	1005	SSW	18	11	0.5	3	86	13	0.0
23-04-26 (Thursday)	0001	32	26	28	1007	SSE	11	06	0.4	2	89	10	0.0
	0600			27	1008	SSE	12	07	0.4	2	90	13	0.0
	1200			30	1007	SSW	15	09	0.4	2	73	08	0.0
	1800			29	1006	SSW	12	07	0.3	2	82	10	0.0
24-04-26 (Friday)	0001	32	26	28	1008	SSW	13	07	0.3	2	89	08	0.0
	0600			27	1009	SSE	11	06	0.3	2	91	11	0.0
	1200			30	1007	SSW	14	08	0.3	2	72	06	0.0
	1800			29	1006	SSW	11	06	0.3	2	81	09	0.0
25-04-26 (Saturday)	0001	32	26	28	1010	SSW	11	07	0.3	2	87	08	0.0
	0600			27	1011	S	10	06	0.2	2	89	10	0.0
	1200			30	1009	SSW	11	07	0.2	2	72	07	0.0
	1800			28	1008	SW	09	05	0.3	2	83	08	0.0

22 Apr 2026

23 Apr 2026

24 Apr 2026

25 Apr 2026



Significant wave height (m)



MARINE WEATHER FORECAST (22 to 29 April 2026)

PATENGA POINT (22° 12' N, 091° 38' E)



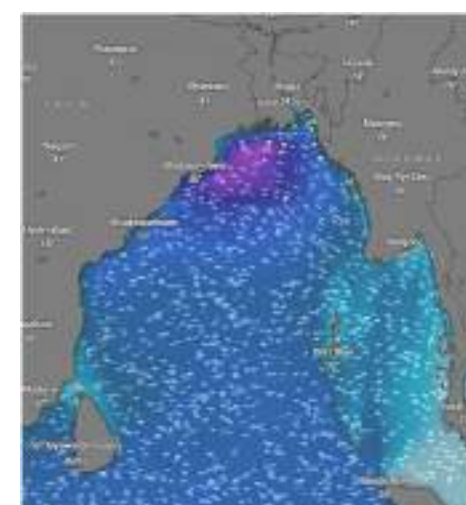
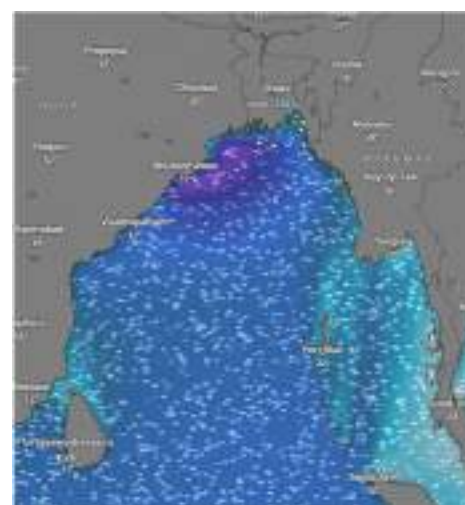
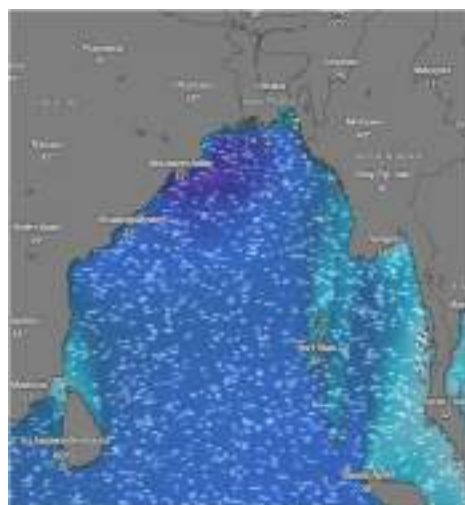
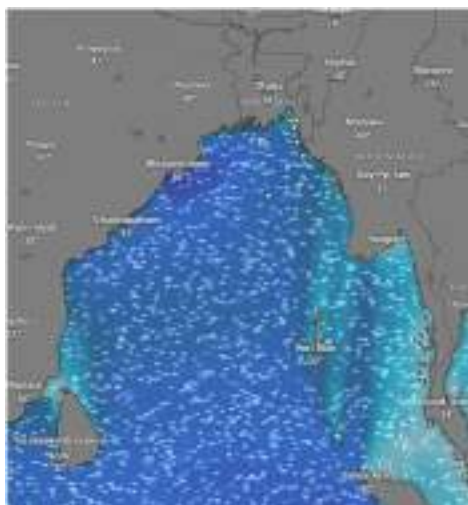
Date	Time	Air Temp (°C)		Sea Surface Temp (°C)	Baro Pressure (mbar)	Wind Direction	Wind Spd (kts)		Wave Ht (m)	Sea State	Humidity (%)	Prob of Rain (%)	Amount of Rain (mm)
		Max	Min				Gusting	Avg					
26-04-26 (Sunday)	0001	32	26	28	1008	SSW	10	05	0.4	2	89	09	0.0
	0600			27	1009	SSE	13	08	0.4	2	90	12	0.0
	1200			30	1007	SSW	15	10	0.5	3	73	08	0.0
	1800			28	1006	SSW	15	10	0.5	3	85	15	0.0
27-04-26 (Monday)	0001	32	25	28	1007	S	14	10	0.5	3	88	09	0.0
	0600			27	1008	SSE	13	09	0.6	3	89	12	0.0
	1200			30	1007	SSW	20	14	0.7	3	74	08	0.0
	1800			28	1006	SW	13	09	0.7	3	86	15	0.0
28-04-26 (Tuesday)	0001	32	25	28	1007	SSW	18	14	0.8	3	89	09	0.0
	0600			27	1008	S	14	10	0.8	3	90	12	0.0
	1200			30	1006	SSW	21	15	0.8	3	75	08	0.0
	1800			28	1005	SSW	17	12	0.7	3	87	15	0.0
29-04-26 (Wednesday)	0001	32	25	28	1007	S	21	15	0.8	3	89	08	0.0
	0600			27	1008	S	20	14	0.8	3	91	12	0.0
	1200			30	1006	SSW	26	19	0.6	3	76	05	0.0
	1800			28	1005	S	22	15	0.7	3	85	11	0.0

26 Apr 2026

27 Apr 2026

28 Apr 2026

29 Apr 2026



Significant wave height (m)



MARINE WEATHER FORECAST (22 to 29 April 2026) ABEAM TO KUTUBDIA (21° 51' N, 091° 40' E)



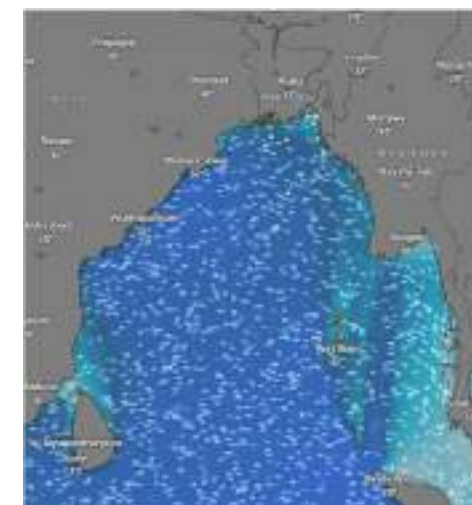
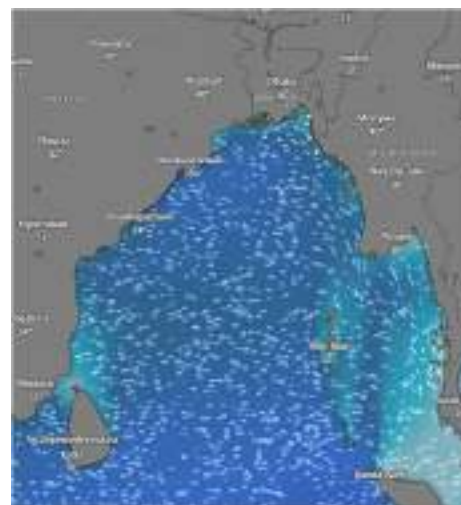
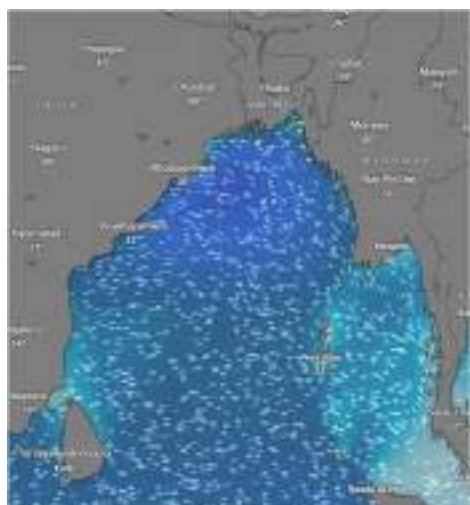
Date	Time	Air Temp (°C)		Sea Surface Temp (°C)	Baro Pressure (mbar)	Wind Direction	Wind Spd (kts)		Wave Ht (m)	Sea State	Humidity (%)	Prob of Rain (%)	Amount of Rain (mm)
		Max	Min				Gusting	Avg					
22-04-26 (Wednesday)	0001	33	26	28	1007	SSW	21	15	0.7	3	88	10	0.0
	0600			27	1008	S	17	13	0.7	3	90	11	0.0
	1200			30	1006	S	18	13	0.7	3	75	13	0.0
	1800			29	1005	SSW	20	14	0.7	3	86	11	0.0
23-04-26 (Thursday)	0001	33	26	28	1007	S	16	12	0.6	3	89	10	0.0
	0600			27	1008	SSW	12	08	0.6	3	90	11	0.0
	1200			30	1007	SSW	15	11	0.5	3	74	13	0.0
	1800			29	1006	SW	13	08	0.5	3	85	11	0.0
24-04-26 (Friday)	0001	33	26	28	1008	SSW	14	09	0.5	3	88	08	0.0
	0600			27	1009	SSE	13	09	0.4	2	90	11	0.0
	1200			30	1007	SW	12	08	0.4	2	75	12	0.0
	1800			29	1006	SW	13	08	0.4	2	87	10	0.0
25-04-26 (Saturday)	0001	32	26	28	1010	SW	12	07	0.4	2	87	10	0.0
	0600			27	1011	SSW	10	06	0.4	2	89	15	0.0
	1200			30	1009	SSW	12	08	0.5	3	73	09	0.0
	1800			28	1008	SW	14	10	0.5	3	85	13	0.0

22 Apr 2026

23 Apr 2026

24 Apr 2026

25 Apr 2026



Significant wave height (m)



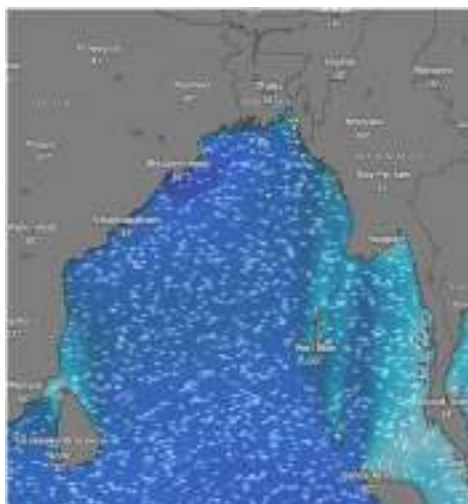
MARINE WEATHER FORECAST (22 to 29 April 2026)

ABEAM TO KUTUBDIA (21° 51' N, 091° 40' E)

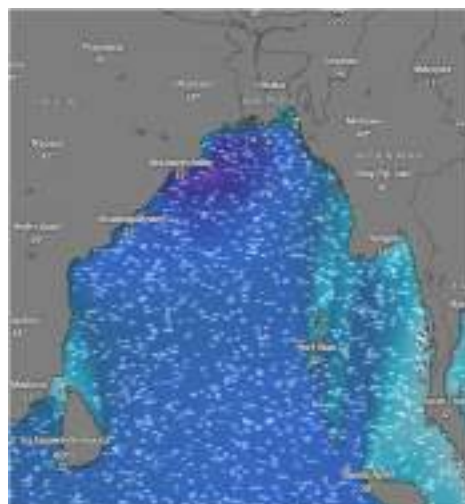


Date	Time	Air Temp (°C)		Sea Surface Temp (°C)	Baro Pressure (mbar)	Wind Direction	Wind Spd (kts)		Wave Ht (m)	Sea State	Humidity (%)	Prob of Rain (%)	Amount of Rain (mm)
		Max	Min				Gusting	Avg					
26-04-26 (Sunday)	0001	32	26	28	1008	SW	12	07	0.5	3	89	10	0.0
	0600			27	1009	S	17	10	0.5	3	90	15	0.0
	1200			30	1007	SSW	18	11	0.6	3	76	09	0.0
	1800			28	1006	SSW	16	12	0.6	3	85	13	0.0
27-04-26 (Monday)	0001	31	25	28	1007	SW	17	13	0.6	3	87	10	0.0
	0600			27	1008	S	16	12	0.7	3	89	15	0.0
	1200			30	1007	SSW	18	14	0.7	3	75	09	0.0
	1800			28	1006	SSW	17	12	1.0	3	81	13	0.0
28-04-26 (Tuesday)	0001	31	25	28	1007	SSW	21	15	1.0	3	88	10	0.0
	0600			27	1008	S	20	14	1.0	3	90	15	0.0
	1200			30	1006	SSW	21	15	1.1	3	74	09	0.0
	1800			28	1005	SSW	20	14	1.0	3	86	13	0.0
29-04-26 (Wednesday)	0001	31	25	28	1007	SSW	22	16	1.0	3	89	09	0.0
	0600			27	1008	SSW	26	18	1.0	3	91	14	0.0
	1200			30	1006	SSW	27	19	0.9	3	75	06	0.0
	1800			28	1005	SSW	16	10	0.9	3	87	12	0.0

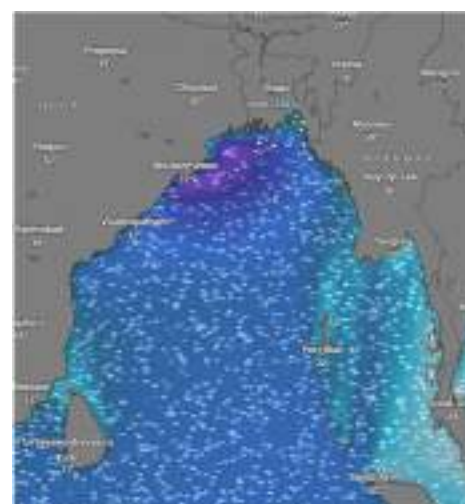
26 Apr 2026



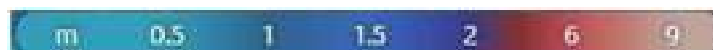
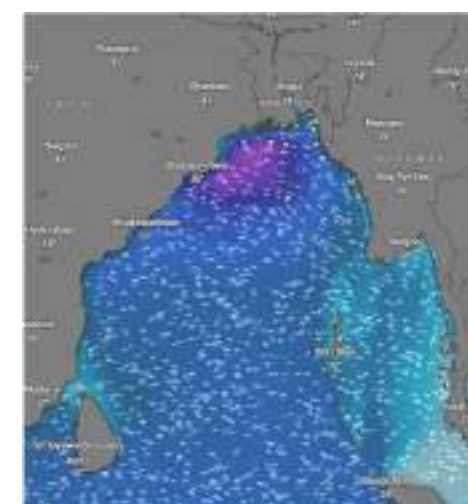
27 Apr 2026



28 Apr 2026



29 Apr 2026



Significant wave height (m)



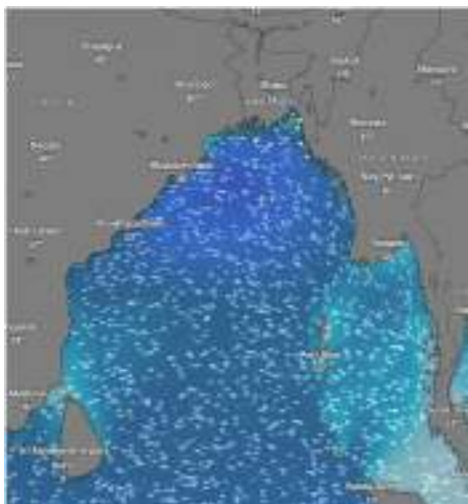
MARINE WEATHER FORECAST (22 to 29 April 2026)

ABEAM TO ELEPHANT POINT (21° 11' N, 091° 52' E)



Date	Time	Air Temp (°C)		Sea Surface Temp (°C)	Baro Pressure (mbar)	Wind Direction	Wind Spd (kts)		Wave Ht (m)	Sea State	Humidity (%)	Prob of Rain (%)	Amount of Rain (mm)
		Max	Min				Gusting	Avg					
22-04-26 (Wednesday)	0001	33	26	28	1007	SSW	16	12	1.2	4	89	12	0.0
	0600			27	1008	SSW	15	11	1.2	4	91	15	0.0
	1200			30	1006	S	14	10	1.2	3	74	12	0.0
	1800			29	1005	SSW	16	12	1.2	3	85	10	0.0
23-04-26 (Thursday)	0001	33	26	28	1007	SSW	11	07	1.2	3	88	10	0.0
	0600			27	1008	S	13	09	1.1	3	90	11	0.0
	1200			30	1007	SSW	10	06	1.0	3	75	12	0.0
	1800			29	1006	SW	13	09	1.0	3	83	10	0.0
24-04-26 (Friday)	0001	33	26	28	1008	SSW	12	08	1.0	3	89	06	0.0
	0600			27	1009	SW	09	05	0.9	3	90	07	0.0
	1200			30	1007	SSW	12	08	0.9	3	75	12	0.0
	1800			29	1006	SSW	13	08	1.0	3	86	10	0.0
25-04-26 (Saturday)	0001	32	26	28	1010	SW	14	09	1.0	3	88	09	0.0
	0600			27	1011	SSW	14	10	0.9	3	90	13	0.0
	1200			30	1009	SSW	16	12	1.0	3	73	06	0.0
	1800			28	1008	SW	16	12	1.0	3	86	15	0.0

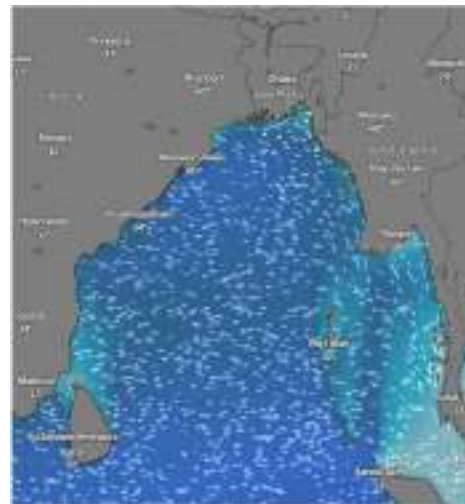
22 Apr 2026



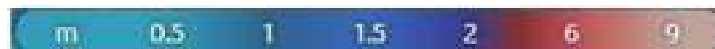
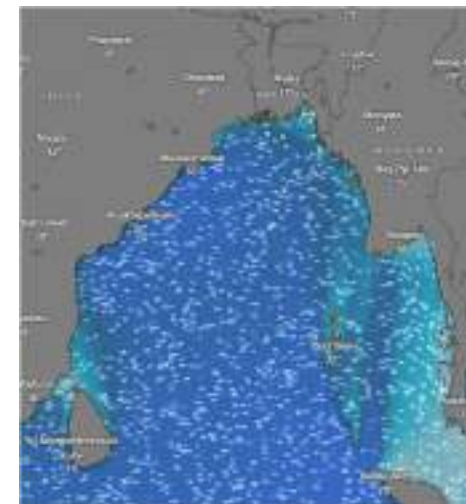
23 Apr 2026



24 Apr 2026



25 Apr 2026



Significant wave height (m)



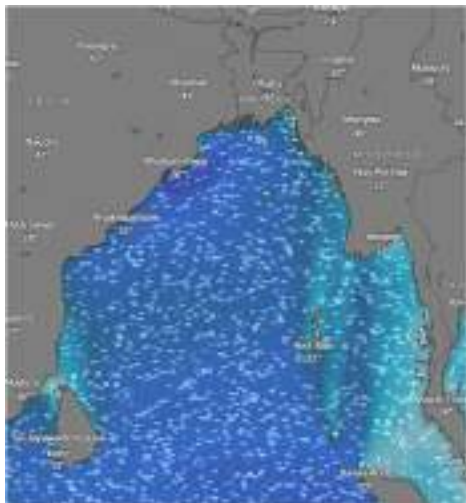
MARINE WEATHER FORECAST (22 to 29 April 2026)

ABEAM TO ELEPHANT POINT (21° 11' N, 091° 52' E)

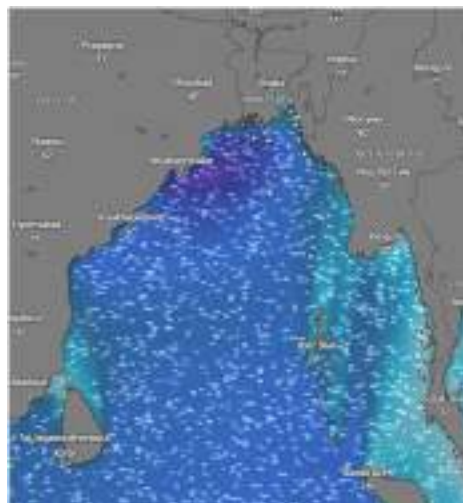


Date	Time	Air Temp (°C)		Sea Surface Temp (°C)	Baro Pressure (mbar)	Win Direction	Wind Spd (kts)		Wave Ht (m)	Sea State	Humidity (%)	Prob of Rain (%)	Amount of Rain (mm)
		Max	Min				Gusting	Avg					
26-04-26 (Sunday)	0001	32	26	29	1008	SSE	14	11	1.0	3	89	08	0.0
	0600			28	1009	SSE	14	10	1.0	3	90	09	0.0
	1200			30	1007	SE	12	11	1.1	3	72	07	0.0
	1800			29	1006	SE	15	12	1.2	3	83	06	0.0
27-04-26 (Monday)	0001	31	25	29	1007	SSW	11	07	1.2	3	89	08	0.0
	0600			28	1008	SSW	14	10	1.3	4	90	09	0.0
	1200			30	1007	SSW	15	11	1.4	4	72	07	0.0
	1800			29	1006	SSW	15	11	1.4	4	83	06	0.0
28-04-26 (Tuesday)	0001	31	25	29	1007	SSW	18	14	1.7	4	89	08	0.0
	0600			28	1008	S	17	13	1.7	4	90	09	0.0
	1200			30	1006	S	22	16	1.8	4	75	07	0.0
	1800			29	1005	SSW	21	15	1.8	4	87	06	0.0
29-04-26 (Wednesday)	0001	31	25	29	1007	SSW	18	14	1.8	4	89	09	0.0
	0600			28	1008	SSW	25	18	1.7	4	91	12	0.0
	1200			30	1006	SSW	22	16	1.7	4	76	05	0.0
	1800			29	1005	SSW	21	15	1.6	4	85	11	0.0

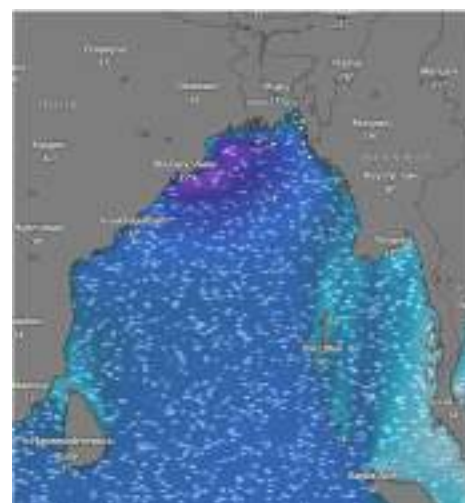
26 Apr 2026



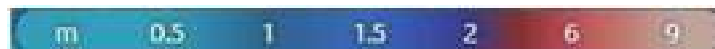
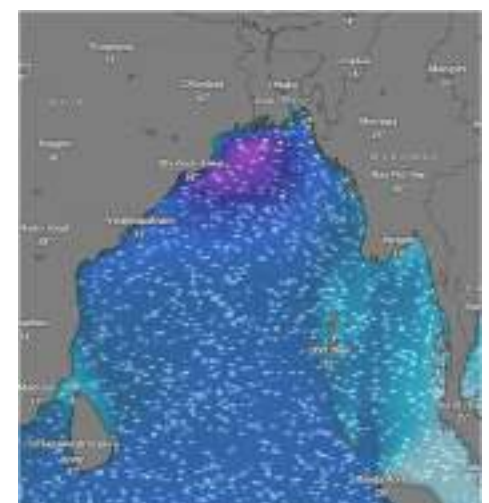
27 Apr 2026



28 Apr 2026



29 Apr 2026



Significant wave height (m)



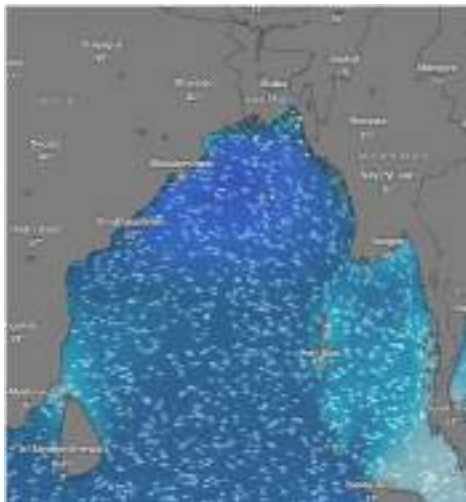
MARINE WEATHER FORECAST (22 to 29 April 2026)

ABEAM TO ST. MARTIN'S LIGHT HOUSE (20° 37' N, 092° 08' E)



Date	Time	AirTemp (°C)		Sea Surface Temp (°C)	Baro Pressure (mbar)	Wind Direction	Wind Spd (kts)		Wave Ht (m)	Sea State	Humidity (%)	Prob of Rain (%)	Amount of Rain (mm)
		Max	Min				Gusting	Avg					
22-04-26 (Wednesday)	0001	33	26	28	1007	SW	14	10	1.2	3	89	10	0.0
	0600			27	1008	SSW	13	09	1.2	3	90	12	0.0
	1200			30	1006	SSW	12	08	1.2	3	74	13	0.0
	1800			29	1005	SW	16	12	1.3	4	85	14	0.0
23-04-26 (Thursday)	0001	33	26	28	1007	W	10	06	1.2	3	85	10	0.0
	0600			27	1008	SW	09	05	1.1	3	91	12	0.0
	1200			30	1007	SW	11	07	1.1	3	72	13	0.0
	1800			29	1006	W	14	10	1.0	3	85	14	0.0
24-04-26 (Friday)	0001	33	26	28	1008	SW	11	07	1.0	3	88	06	0.0
	0600			27	1009	S	12	08	0.9	3	89	07	0.0
	1200			30	1007	SSW	15	11	0.9	3	73	08	0.0
	1800			29	1006	W	16	12	0.9	3	85	09	0.0
25-04-26 (Saturday)	0001	32	26	28	1010	S	11	08	1.0	3	87	10	0.0
	0600			27	1011	SSE	10	07	0.9	3	89	15	0.0
	1200			30	1009	SE	13	10	1.0	3	74	08	0.0
	1800			28	1008	SSE	14	10	1.0	3	85	12	0.0

22 Apr 2026



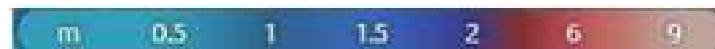
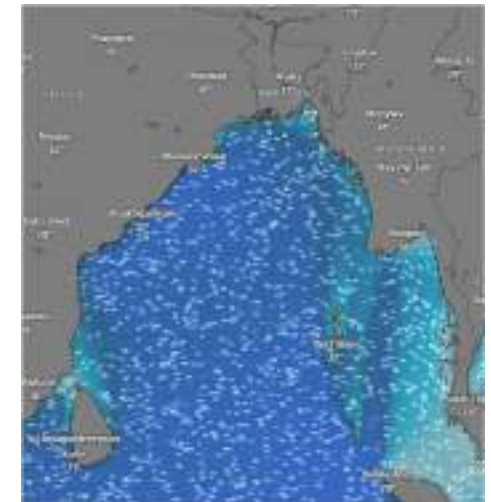
23 Apr 2026



24 Apr 2026



25 Apr 2026



Significant wave height (m)

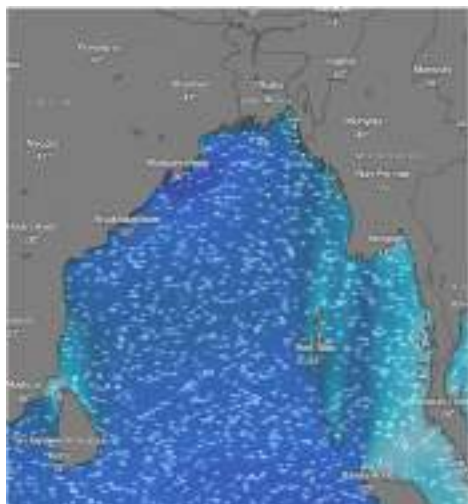


MARINE WEATHER FORECAST (22 to 29 April 2026) ABEAM TO ST. MARTIN'S LIGHT HOUSE (20° 37' N, 092° 08' E)

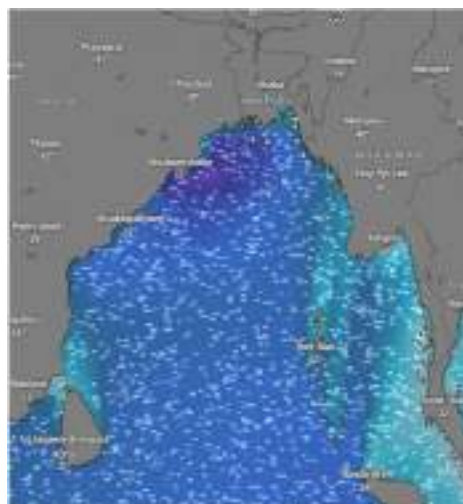


Date	Time	Air Temp (°C)		Sea Surface Temp (°C)	Baro Pressure (mbar)	Wind Direction	Wind Spd (kts)		Wave Ht (m)	Sea State	Humidity (%)	Prob of Rain (%)	Amount of Rain (mm)
		Max	Min				Gusting	Avg					
26-04-26 (Sunday)	0001	32	26	28	1008	S	12	08	1.0	3	88	12	0.0
	0600			27	1009	SSE	11	08	1.0	3	89	17	0.0
	1200			30	1007	SE	10	09	1.1	3	77	09	0.0
	1800			28	1006	SSE	11	08	1.1	3	83	15	0.0
27-04-26 (Monday)	0001	31	25	28	1007	SSW	09	05	1.2	3	88	12	0.0
	0600			27	1008	SW	14	10	1.2	3	89	17	0.0
	1200			30	1007	SSW	13	09	1.3	4	75	09	0.0
	1800			28	1006	SW	15	11	1.5	4	86	15	0.0
28-04-26 (Tuesday)	0001	31	25	28	1007	SW	16	12	1.6	4	89	09	0.0
	0600			27	1008	SSW	14	10	1.6	4	90	15	0.0
	1200			30	1006	SSW	18	14	1.7	4	74	10	0.0
	1800			28	1005	SSW	17	13	1.7	4	87	17	0.0
29-04-26 (Wednesday)	0001	31	25	28	1007	SSW	17	13	1.7	4	89	10	0.0
	0600			27	1008	SSW	16	12	1.7	4	91	16	0.0
	1200			30	1006	SSW	17	13	1.7	4	75	09	0.0
	1800			28	1005	SW	15	11	1.6	4	86	15	0.0

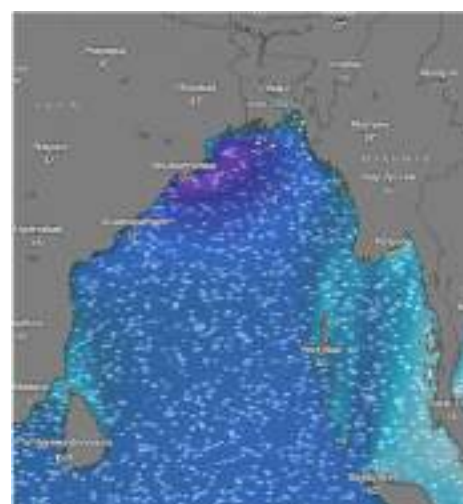
26 Apr 2026



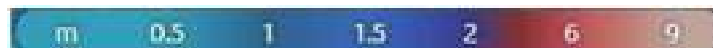
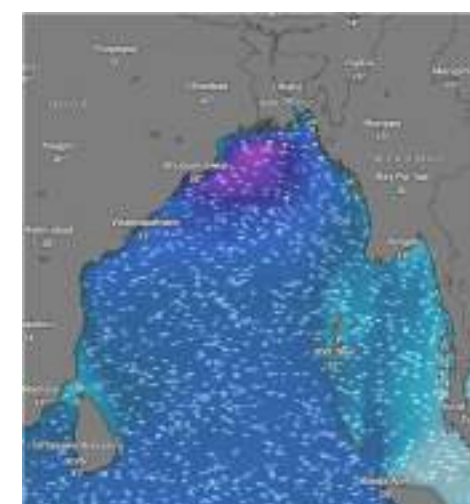
27 Apr 2026



28 Apr 2026



29 Apr 2026



Significant wave height (m)



MARINE WEATHER FORECAST (22 to 29 April 2026)



PAYRA FAIRWAY (21° 22' N, 090° 6' E)

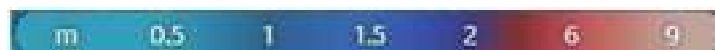
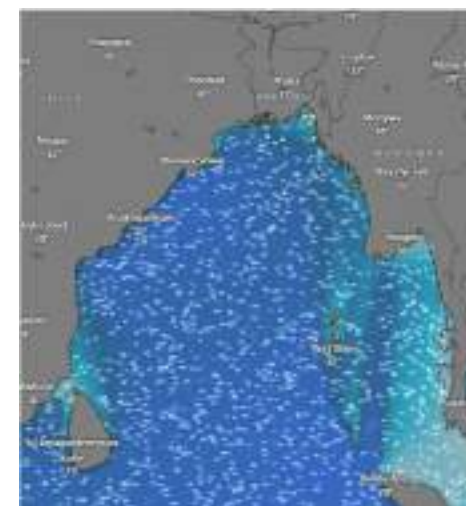
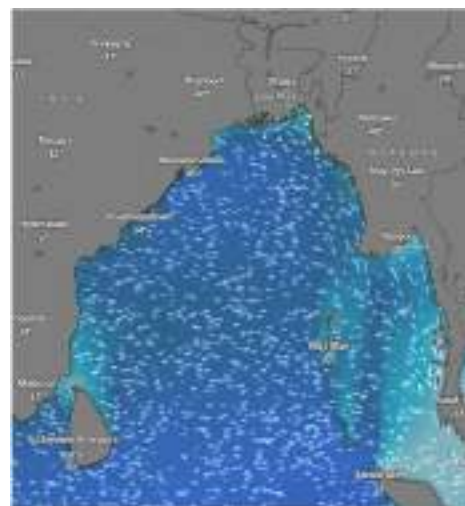
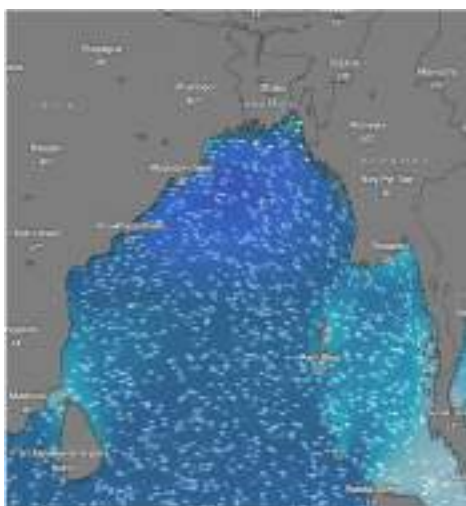
Date	Time	Air Temp (°C)		Sea Surface Temp (°C)	Baro Pressure (mbar)	Wind Direction	Wind Spd (kts)		Wave Ht (m)	Sea State	Humidity (%)	Prob of Rain (%)	Amount of Rain (mm)
		Max	Min				Gusting	Avg					
22-04-26 (Wednesday)	0001	33	26	28	1007	SSW	25	17	1.6	4	89	10	0.0
	0600			27	1008	SSW	21	15	1.6	4	91	15	0.0
	1200			30	1006	S	16	12	1.6	4	75	09	0.0
	1800			29	1005	SSW	22	16	1.5	4	87	12	0.0
23-04-26 (Thursday)	0001	33	26	28	1007	S	15	11	1.4	4	89	09	0.0
	0600			27	1008	SSW	10	06	1.3	4	90	08	0.0
	1200			30	1007	SSW	14	10	1.2	3	76	10	0.0
	1800			29	1006	SSW	14	10	1.1	3	87	11	0.0
24-04-26 (Friday)	0001	33	26	28	1008	SW	16	12	1.2	3	89	08	0.0
	0600			27	1009	SW	12	08	1.1	3	90	07	0.0
	1200			30	1007	SSW	14	10	1.1	3	76	10	0.0
	1800			29	1006	SW	15	10	1.1	3	84	12	0.0
25-04-26 (Saturday)	0001	32	26	28	1010	SW	16	12	1.1	3	87	12	0.0
	0600			27	1011	SW	12	08	1.1	3	90	15	0.0
	1200			30	1009	SSW	15	11	1.1	3	72	09	0.0
	1800			28	1008	SW	15	11	1.2	3	85	14	0.0

22 Apr 2026

23 Apr 2026

24 Apr 2026

25 Apr 2026



Significant wave height (m)



MARINE WEATHER FORECAST (22 to 29 April 2026)

PAYRA FAIRWAY (21° 22' N, 090° 6' E)



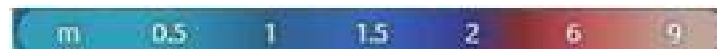
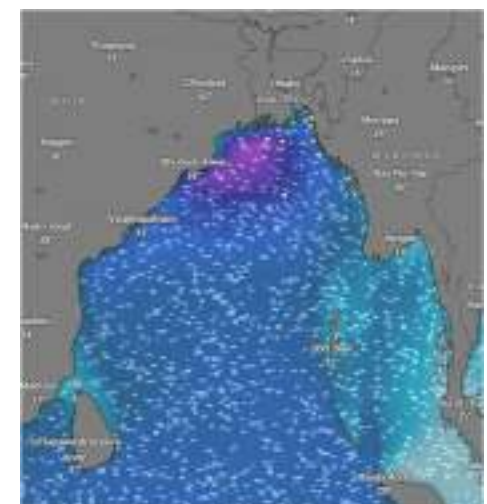
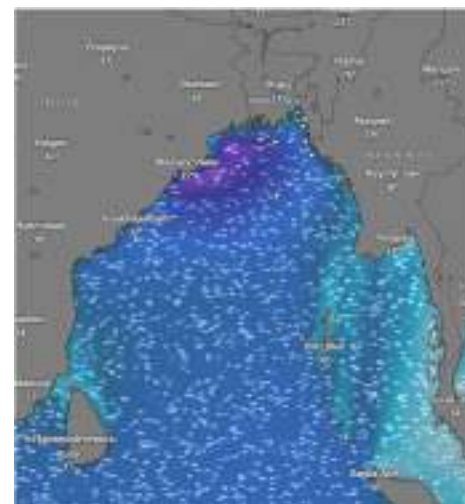
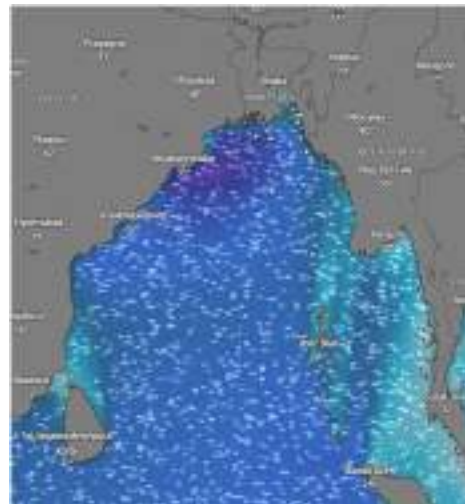
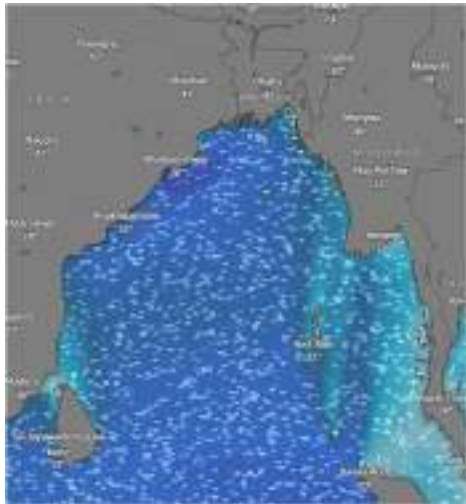
Date	Time	Air Temp (°C)		Sea Surface Temp (°C)	Baro Pressure (mbar)	Wind Direction	Wind Spd (kts)		Wae Ht (m)	Sea State	Humidity (%)	Prob of Rain (%)	Amount of Rain (mm)
		Max	Min				Gusting	Avg					
26-04-26 (Sunday)	0001	32	26	28	1008	SW	13	09	1.3	4	87	12	0.0
	0600			27	1009	SW	14	10	1.3	4	90	15	0.0
	1200			30	1007	SSW	15	10	1.4	4	76	09	0.0
	1800			28	1006	SW	16	12	1.6	4	85	14	0.0
27-04-26 (Monday)	0001	31	25	28	1007	SSW	22	16	1.7	4	87	12	0.0
	0600			27	1008	SSW	20	14	1.8	4	90	15	0.0
	1200			30	1007	SSW	27	19	1.8	4	76	09	0.0
	1800			28	1006	SSW	27	20	2.0	4	85	14	0.0
28-04-26 (Tuesday)	0001	31	25	28	1007	SSW	22	16	2.3	4	89	12	0.0
	0600			27	1008	SSW	26	18	2.3	4	91	15	0.0
	1200			30	1006	SSW	27	19	2.4	4	77	09	0.0
	1800			28	1005	SSW	27	20	2.3	4	85	14	0.0
29-04-26 (Wednesday)	0001	31	25	28	1007	SSW	26	18	2.3	4	90	22	0.1
	0600			27	1008	SSW	26	19	2.3	4	92	32	0.2
	1200			30	1006	SSW	26	18	2.3	4	76	15	0.0
	1800			28	1005	SSW	27	20	2.1	4	87	21	0.0

26 Apr 2026

27 Apr 2026

28 Apr 2026

29 Apr 2026



Significant wave height (m)



MARINE WEATHER FORECAST (22 to 29 April 2026)

MONGLA FAIRWAY (21° 26' N, 089° 34' E)



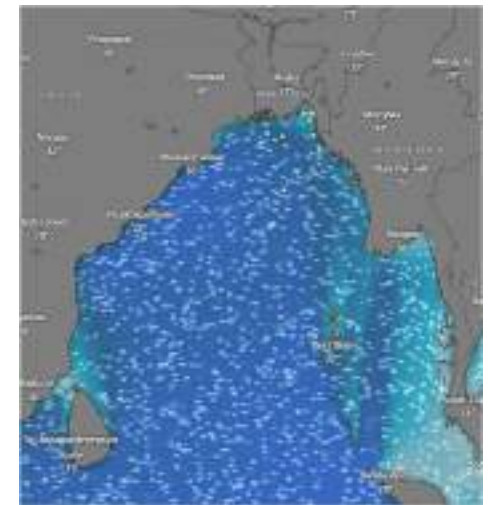
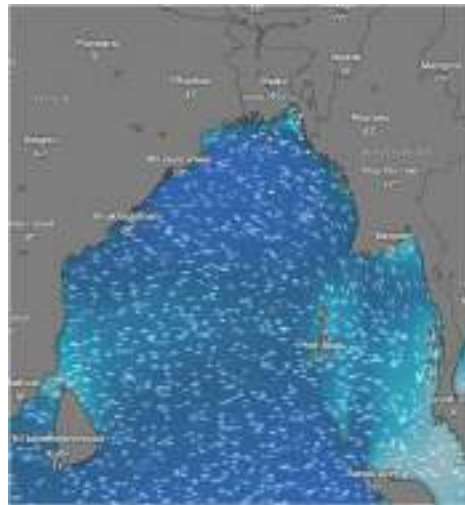
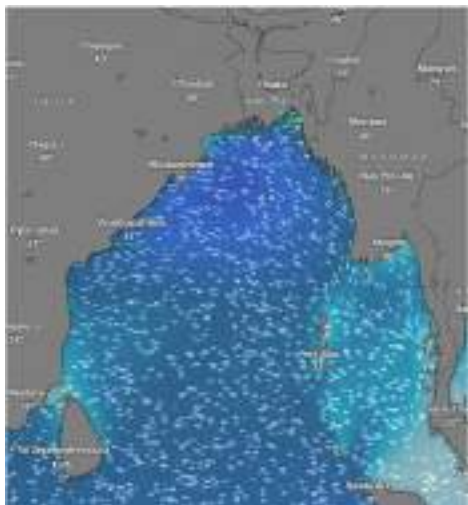
Date	Time	Air Temp (°C)		Sea Surface Temp (°C)	Baro Pressure (mbar)	Wind Direction	Wind Spd (kts)		Wave Ht (m)	Sea State	Humidity (%)	Prob of Rain (%)	Amount of Rain (mm)
		Max	Min				Gusting	Avg					
22-04-26 (Wednesday)	0001	33	26	28	1007	SSW	22	16	1.7	4	89	10	0.0
	0600			27	1008	SSW	20	15	1.7	4	91	11	0.0
	1200			30	1006	SSW	16	12	1.6	4	75	12	0.0
	1800			29	1005	SW	17	12	1.5	4	86	10	0.0
23-04-26 (Thursday)	0001	33	26	28	1007	S	18	14	1.4	4	88	08	0.0
	0600			27	1008	SSW	14	10	1.3	4	89	07	0.0
	1200			30	1007	SSW	15	10	1.2	3	75	10	0.0
	1800			29	1006	SW	16	12	1.2	3	86	10	0.0
24-04-26 (Friday)	0001	33	26	28	1008	SSW	17	13	1.2	3	89	12	0.0
	0600			27	1009	SW	13	09	1.2	3	90	17	0.0
	1200			30	1007	S	14	10	1.2	3	75	08	0.0
	1800			29	1006	SSW	15	10	1.1	3	87	12	0.0
25-04-26 (Saturday)	0001	32	26	28	1010	SSW	15	11	1.1	3	88	13	0.0
	0600			27	1011	SW	13	09	1.1	3	90	15	0.0
	1200			29	1009	SSW	14	09	1.1	3	73	11	0.0
	1800			29	1008	SW	17	13	1.2	3	84	17	0.0

22 Apr 2026

23 Apr 2026

24 Apr 2026

25 Apr 2026



Significant wave height (m)



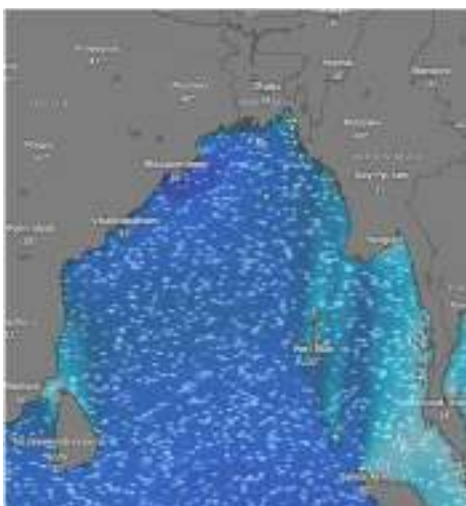
MARINE WEATHER FORECAST (22 to 29 April 2026)

MONGLA FAIRWAY (21° 26' N, 089° 34' E)

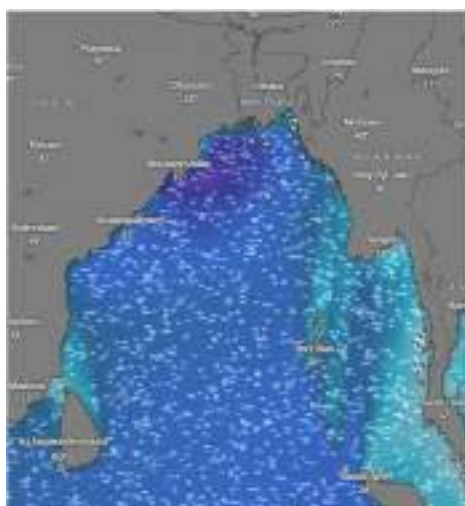


Date	Time	Air Temp (°C)		Sea Surface Temp (°C)	Baro Pressure (mbar)	Wind Direction	Wind Spd (kts)		Wave Ht (m)	Sea State	Humidity (%)	Prob of Rain (%)	Amount of Rain (mm)
		Max	Min				Gusting	Avg					
26-04-26 (Sunday)	0001	32	26	28	1008	SSW	21	16	1.6	4	88	13	0.0
	0600			27	1009	SW	22	14	1.6	4	90	15	0.0
	1200			30	1007	SSW	17	13	1.5	4	75	11	0.0
	1800			28	1006	SSW	18	14	1.4	4	86	17	0.0
27-04-26 (Monday)	0001	31	25	28	1007	SSW	24	18	2.0	4	88	13	0.0
	0600			27	1008	SSW	17	13	1.9	4	90	15	0.0
	1200			30	1007	SSW	22	17	2.1	4	75	11	0.0
	1800			28	1006	SSW	24	19	2.3	4	86	17	0.0
28-04-26 (Tuesday)	0001	31	25	28	1007	SSW	19	14	2.4	4	89	13	0.0
	0600			27	1008	SW	26	18	2.4	4	90	15	0.0
	1200			30	1006	SSW	27	19	2.5	5	76	11	0.0
	1800			28	1005	SSW	27	20	2.4	4	87	17	0.0
29-04-26 (Wednesday)	0001	31	25	28	1007	SSW	28	20	2.4	4	90	14	0.0
	0600			27	1008	SW	27	20	2.4	4	93	22	0.1
	1200			30	1006	SW	27	19	2.4	4	78	15	0.0
	1800			28	1005	SSW	28	21	2.2	4	86	30	0.1

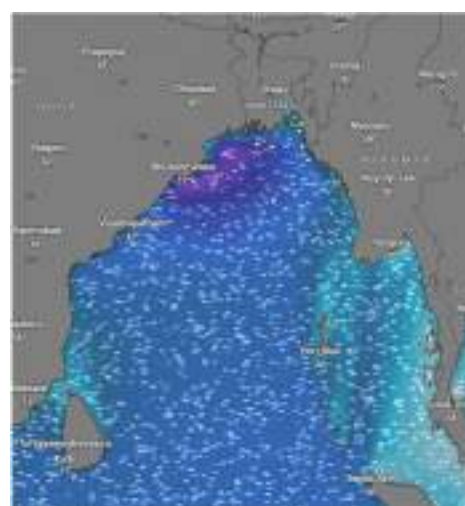
26 Apr 2026



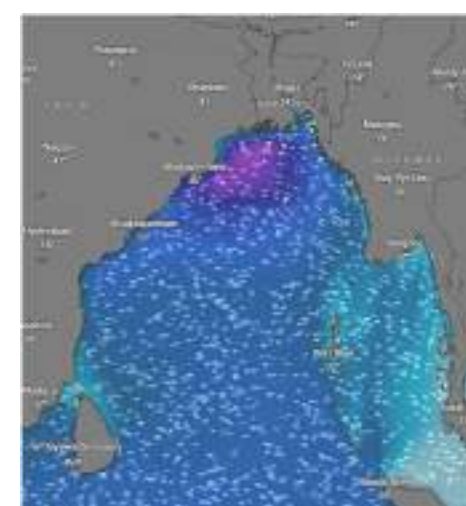
27 Apr 2026



28 Apr 2026



29 Apr 2026



Significant wave height (m)



MARINE WEATHER FORECAST (22 to 29 April 2026)

OUTER EEZ (18° 48' N, 090° 30' E)



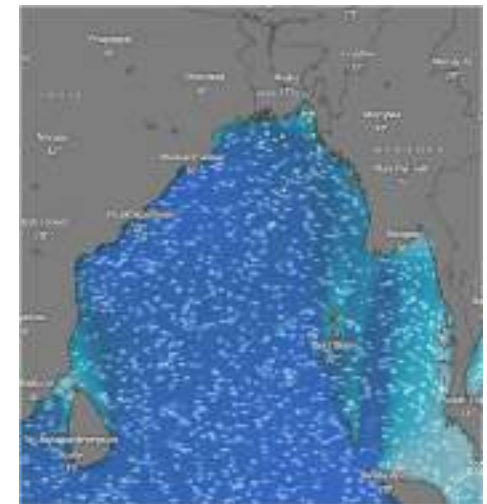
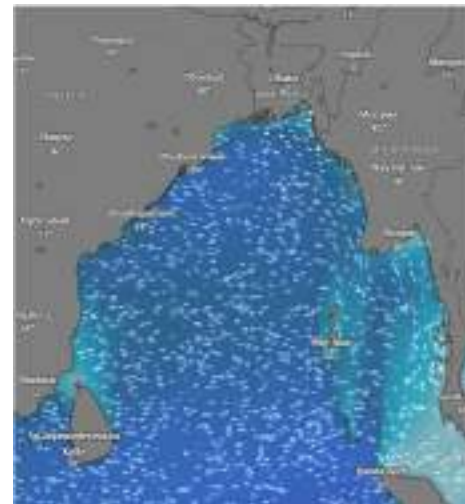
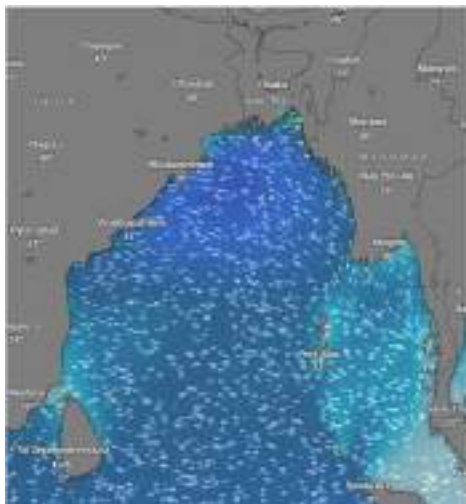
Date	Time	Air Temp (°C)		Sea Surface Temp (°C)	Baro Pressure (mbar)	Wind Direction	Wind Spd (kts)		Wave Ht (m)	Sea State	Humidity (%)	Prob of Rain (%)	Amount of Rain (mm)
		Max	Min				Gusting	Avg					
22-04-26 (Wednesday)	0001	33	26	28	1007	SSW	22	16	1.7	4	89	10	0.0
	0600			27	1008	SSW	18	14	1.7	4	90	14	0.0
	1200			30	1006	SW	16	12	1.6	4	75	09	0.0
	1800			29	1005	SW	20	14	1.5	4	86	15	0.0
23-04-26 (Thursday)	0001	33	26	28	1007	SW	18	14	1.5	4	88	10	0.0
	0600			27	1008	SW	12	08	1.4	4	89	12	0.0
	1200			30	1007	SW	13	09	1.3	4	72	13	0.0
	1800			29	1006	SW	17	13	1.3	4	85	14	0.0
24-04-26 (Friday)	0001	33	26	28	1008	W	20	15	1.3	3	88	10	0.0
	0600			27	1009	SW	10	06	1.2	3	90	12	0.0
	1200			30	1007	SW	16	12	1.2	3	75	13	0.0
	1800			29	1006	SW	15	11	1.2	3	87	14	0.0
25-04-26 (Saturday)	0001	32	26	28	1010	SW	12	07	1.2	3	89	12	0.0
	0600			27	1011	SW	13	08	1.2	3	90	16	0.0
	1200			30	1009	SW	15	11	1.2	3	74	10	0.0
	1800			28	1008	SW	14	10	1.3	4	85	17	0.0

22 Apr 2026

23 Apr 2026

24 Apr 2026

25 Apr 2026



Significant wave height (m)



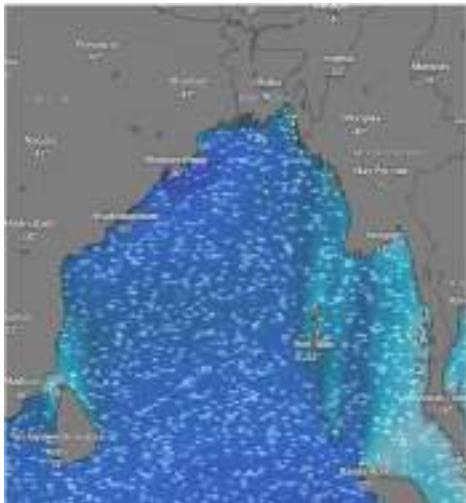
MARINE WEATHER FORECAST (22 to 29 April 2026)

OUTER EEZ (18° 48' N, 090° 30' E)

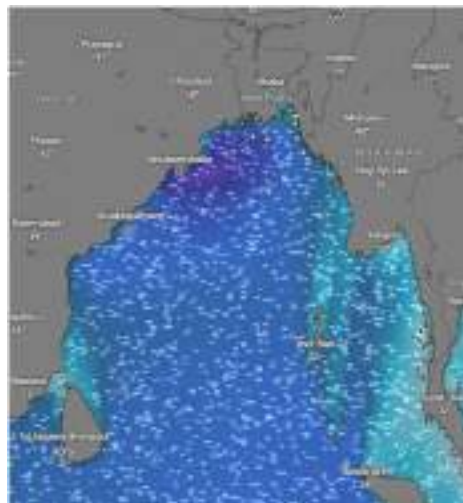


Date	Time	Air Temp (°C)		Sea Surface Temp (°C)	Baro Pressure (mbar)	Wind Direction	Wind Spd (kts)		Wave Ht (m)	Sea State	Humidity (%)	Prob of Rain (%)	Amount of Rain (mm)
		Max	Min				Gusting	Avg					
26-04-26 (Sunday)	0001	32	26	28	1008	SW	13	09	1.2	3	89	10	0.0
	0600			27	1009	SSW	12	08	1.3	4	90	16	0.0
	1200			30	1007	SW	12	08	1.3	4	75	11	0.0
	1800			28	1006	SW	13	09	1.4	4	86	15	0.0
27-04-26 (Monday)	0001	31	25	28	1007	SW	18	14	1.5	4	89	10	0.0
	0600			27	1008	SSW	21	15	1.6	4	90	16	0.0
	1200			30	1007	SSW	18	14	1.7	4	75	11	0.0
	1800			28	1006	SW	22	17	1.8	4	86	15	0.0
28-04-26 (Tuesday)	0001	31	25	28	1007	SW	21	15	2.0	4	88	08	0.0
	0600			27	1008	SSW	22	17	2.1	4	90	15	0.0
	1200			30	1006	SSW	18	14	2.0	4	74	12	0.0
	1800			28	1005	SW	26	18	2.0	4	87	17	0.0
29-04-26 (Wednesday)	0001	31	25	28	1007	SSW	25	17	2.1	4	89	12	0.0
	0600			27	1008	SSW	26	18	2.0	4	91	31	0.2
	1200			30	1006	SSW	22	16	1.9	4	75	15	0.0
	1800			28	1005	SW	21	15	1.8	4	88	24	0.1

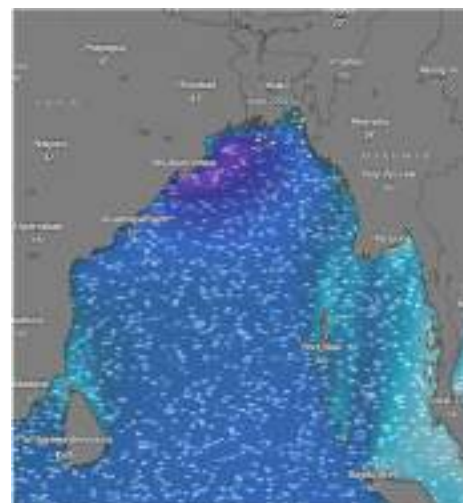
26 Apr 2026



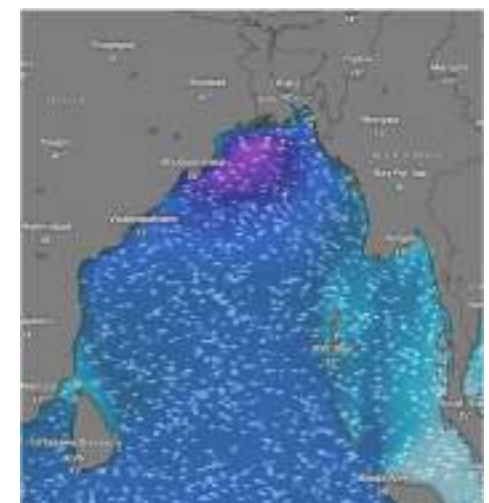
27 Apr 2026



28 Apr 2026



29 Apr 2026



Significant wave height (m)



PREDICTED SURFACE PRESSURE FORECAST (22 to 28 April 2026)



22 Apr 2026



23 Apr 2026



24 Apr 2026



25 Apr 2026



26 Apr 2026



27 Apr 2026



28 Apr 2026

