



SUMMARY OF MARINE WEATHER FORECAST
COASTAL AREA OF BANGLADESH
DATE: 21 to 28 Dec 2024



Fleet forecast	The depression over west central Bay of Bengal off Andhra Pradesh coast moved Northeastwards (near Lat: 13.9°N, Long: 83.7°E). It is likely to move Northeastwards during next 24 hours.
Wind direction, speed	North/North-easterly 10 kts, (Temporary gusting up to 28 kts).
Wave height & sea state	Wave height: 0.1 to 1.6 m (Sea state:1 to 4).
Sea surface temperature	18°C - 27°C (May remain nearly unchanged).
Baro pressure	1011-1019 mb.
Rainfall	Rain/Thunder Showers over North Bay of Bengal & adjoining area.
Fog	Light to moderate fog may occur at places over the coastal area during during late night till morning.
Outlook for 21 to 28 Dec 2024: Weather may remain mainly dry with temporary partly cloudy Sky & Night temperature may fall slightly and day temperature may remain nearly unchanged.	



MARINE WEATHER FORECAST (21 to 28 Dec 2024)

PATENGA POINT (22° 12' N, 091° 38' E)



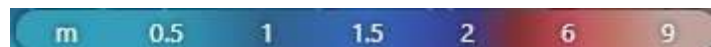
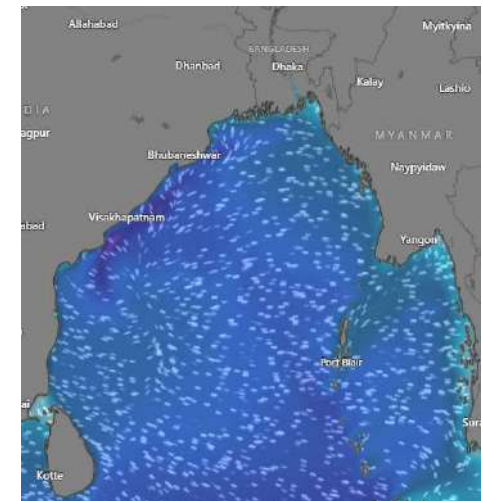
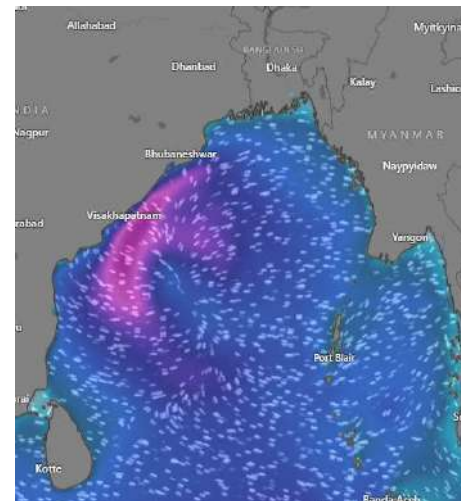
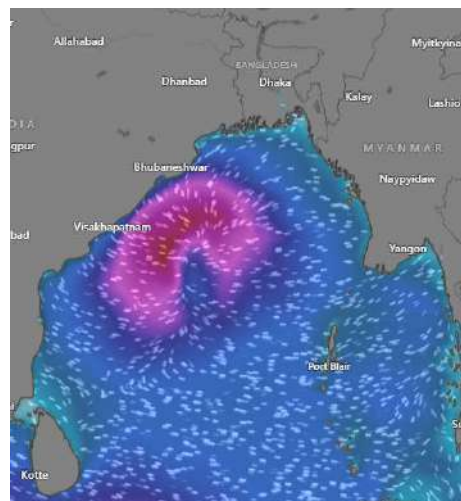
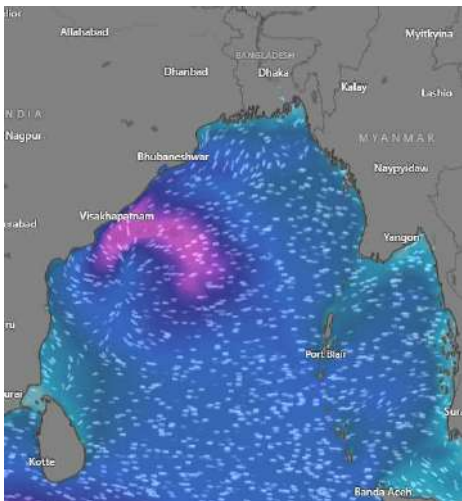
Date	Time	Air Temp (°C)		Sea Surface Temp (°C)	Baro Pressure (mbar)	Wind Direction	Wind Spd (kts)		Wave Ht (m)	Sea State	Humidity (%)	Prob of Rain (%)	Amount of Rain (mm)
		Max	Min				Gusting	Avg					
21-12-24 (Saturday)	0001	24	18	22	1012	NNE	10	7	0.2	2	81	14	0.0
	0600			21	1014	NNE	11	7	0.2	2	84	12	0.0
	1200			22	1012	WNW	12	5	0.2	2	65	13	0.0
	1800			22	1014	NNE	20	9	0.3	2	71	15	0.0
22-12-24 (Sunday)	0001	28	16	20	1014	NE	10	7	0.2	2	83	36	0.2
	0600			19	1015	NE	14	9	0.3	2	85	14	0.0
	1200			24	1011	NW	13	7	0.2	2	65	12	0.0
	1800			23	1013	NNW	10	8	0.2	2	74	13	0.0
23-12-24 (Monday)	0001	28	17	20	1013	NE	12	7	0.2	2	84	24	0.0
	0600			18	1016	NNE	16	6	0.2	2	85	14	0.0
	1200			23	1012	NE	9	7	0.2	2	65	12	0.0
	1800			22	1014	NW	9	7	0.1	1	71	13	0.0
24-12-24 (Tuesday)	0001	27	19	22	1013	N	10	7	0.2	2	84	15	0.0
	0600			21	1015	NNE	11	8	0.2	2	85	12	0.0
	1200			22	1012	NE	25	10	0.4	2	65	10	0.0
	1800			22	1014	NW	20	12	0.4	2	71	12	0.0

21 Dec 2024

22 Dec 2024

23 Dec 2024

24 Dec 2024



Significant wave height (m)



MARINE WEATHER FORECAST (21 to 28 Dec 2024)

PATENGA POINT (22° 12' N, 091° 38' E)



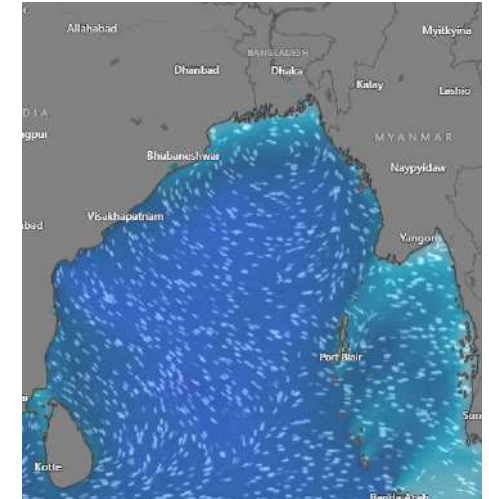
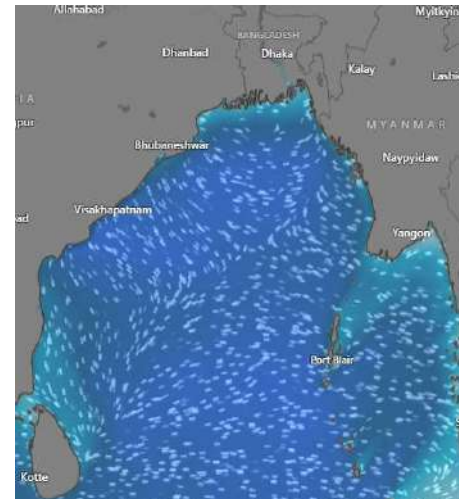
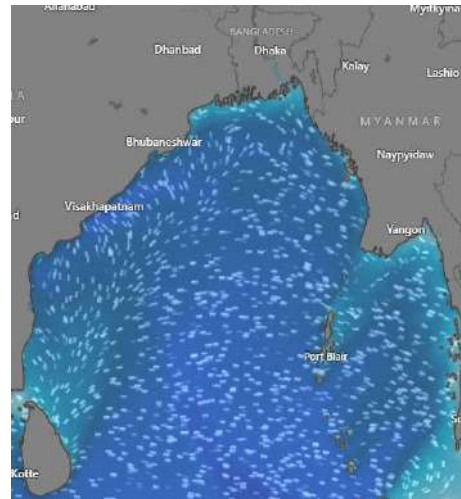
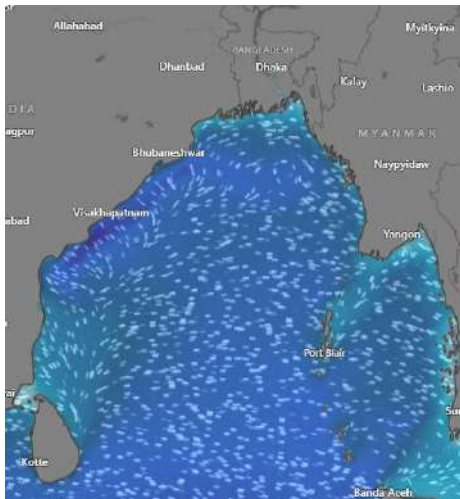
Date	Time	Air Temp (°C)		Sea Surface Temp (°C)	Baro Pressure (mbar)	Wind Direction	Wind Spd (kts)		Wave Ht (m)	Sea State	Humidity (%)	Prob of Rain (%)	Amount of Rain (mm)
		Max	Min				Gusting	Avg					
25-12-24 (Wednesday)	0001	26	18	21	1014	NE	8	6	0.1	1	94	10	0.0
	0600			19	1017	NE	9	5	0.2	2	95	11	0.0
	1200			24	1013	N	17	13	0.3	2	78	10	0.0
	1800			23	1014	N	21	15	0.5	2	83	17	0.0
26-12-24 (Thursday)	0001	29	17	21	1016	NNE	9	5	0.2	2	90	17	0.0
	0600			19	1019	NW	10	4	0.2	2	93	10	0.0
	1200			25	1015	NW	10	5	0.1	1	72	11	0.0
	1800			24	1017	NNW	10	4	0.1	1	81	10	0.0
27-12-24 (Friday)	0001	27	16	21	1017	NNE	9	5	0.2	2	90	17	0.0
	0600			19	1017	NW	10	4	0.2	2	93	10	0.0
	1200			23	1016	NW	10	5	0.1	1	72	11	0.0
	1800			22	1019	NNW	10	4	0.1	1	81	10	0.0
28-12-24 (Saturday)	0001	27	16	20	1015	NNE	9	5	0.2	2	90	17	0.0
	0600			18	1017	NW	10	4	0.2	2	93	10	0.0
	1200			23	1012	NW	10	5	0.1	1	72	11	0.0
	1800			21	1014	NNW	10	4	0.1	1	81	10	0.0

25 Dec 2024

26 Dec 2024

27 Dec 2024

28 Dec 2024



Significant wave height (m)



MARINE WEATHER FORECAST (21 to 28 Dec 2024)

ABEAM TO KUTUBDIA (21° 51' N, 091° 40' E)



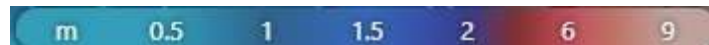
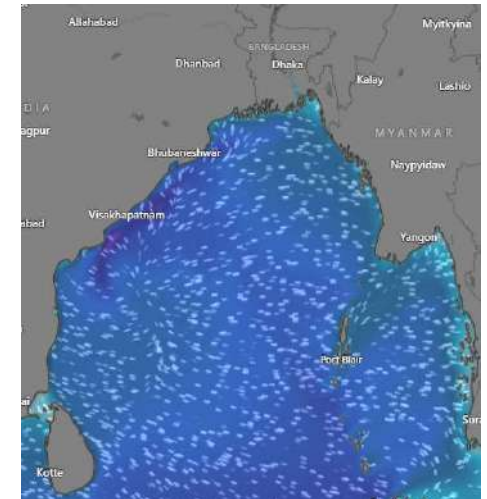
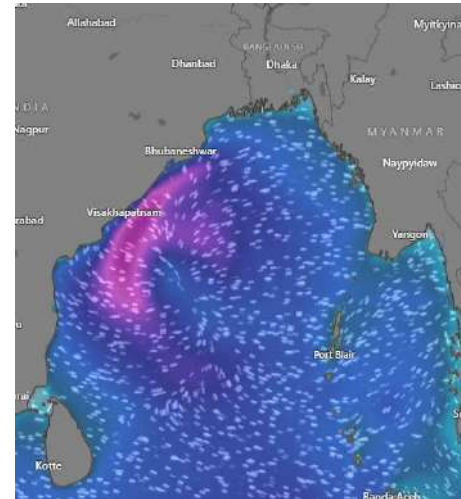
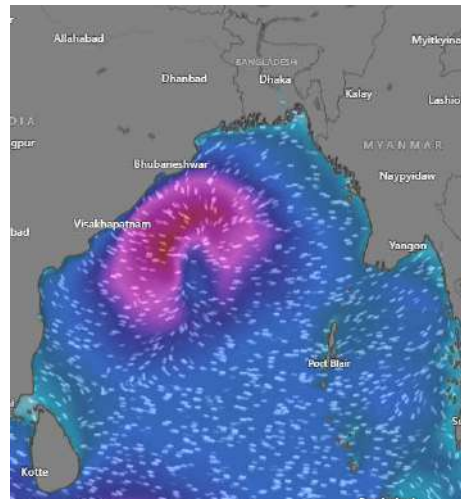
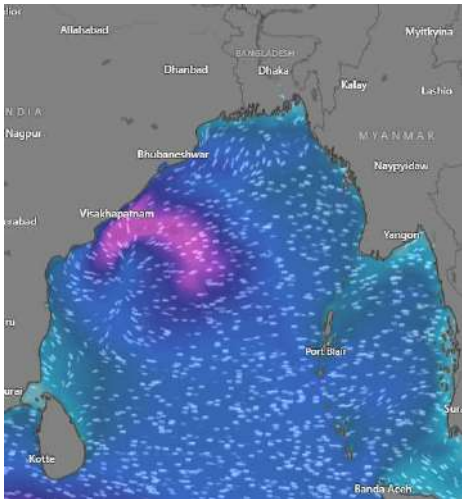
Date	Time	Air Temp (°C)		Sea Surface Temp (°C)	Baro Pressure (mbar)	Wind Direction	Wind Spd (kts)		Wave Ht (m)	Sea State	Humidity (%)	Prob of Rain (%)	Amount of Rain (mm)
		Max	Min				Gusting	Avg					
21-12-24 (Saturday)	0001	24	20	23	1012	NNE	14	10	0.4	2	88	11	0.0
	0600			23	1014	NNE	15	11	0.4	2	81	10	0.0
	1200			23	1012	WNW	20	14	0.6	3	71	10	0.0
	1800			22	1013	N	21	13	0.6	3	77	14	0.0
22-12-24 (Sunday)	0001	26	19	21	1013	E	12	7	0.4	2	83	12	0.0
	0600			20	1015	NNE	18	12	0.5	2	83	16	0.0
	1200			24	1011	NNW	15	10	0.4	2	72	13	0.0
	1800			22	1013	NNW	21	8	0.3	2	75	14	0.0
23-12-24 (Monday)	0001	26	19	22	1013	NNE	14	10	0.4	2	83	12	0.0
	0600			21	1016	NNE	15	9	0.4	2	81	10	0.0
	1200			23	1013	NNW	11	8	0.4	2	70	14	0.0
	1800			21	1014	NW	11	8	0.4	2	74	16	0.0
24-12-24 (Tuesday)	0001	26	20	22	1013	NE	11	9	0.4	2	83	13	0.0
	0600			21	1016	NE	11	9	0.4	2	81	14	0.0
	1200			23	1012	NNE	24	14	0.7	3	70	12	0.0
	1800			22	1014	NE	20	14	0.6	3	74	10	0.0

21 Dec 2024

22 Dec 2024

23 Dec 2024

24 Dec 2024



Significant wave height (m)

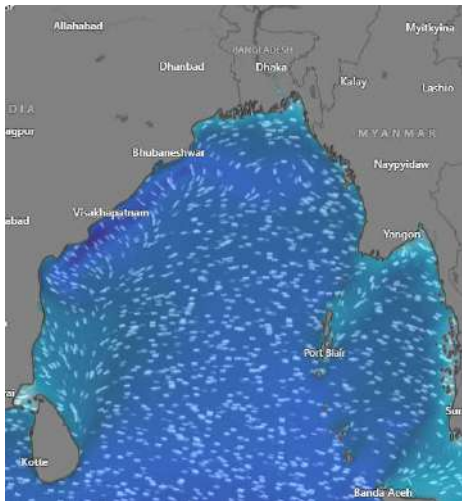


MARINE WEATHER FORECAST (21 to 28 Dec 2024) ABEAM TO KUTUBDIA (21° 51' N, 091° 40' E)

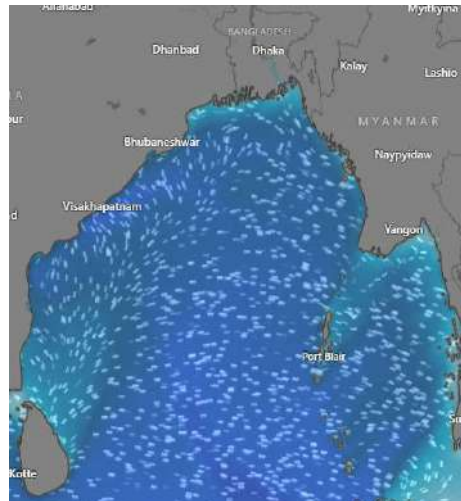


Date	Time	Air Temp (°C)		Sea Surface Temp (°C)	Baro Pressure (mbar)	Wind Direction	Wind Spd (kts)		Wave Ht (m)	Sea State	Humidity (%)	Prob of Rain (%)	Amount of Rain (mm)
		Max	Min				Gusting	Avg					
25-12-24 (Wednesday)	0001	25	20	22	1014	NE	10	7	0.4	2	83	16	0.0
	0600			23	1017	NNE	10	8	0.4	2	86	13	0.0
	1200			25	1014	NW	19	15	0.5	2	88	14	0.0
	1800			24	1015	WNW	24	17	0.8	3	89	12	0.0
26-12-24 (Thursday)	0001	26	19	23	1016	NE	10	5	0.5	2	90	10	0.0
	0600			22	1019	NNE	21	16	0.5	2	91	15	0.0
	1200			25	1015	NW	20	11	0.5	2	82	16	0.0
	1800			24	1016	NE	10	8	0.5	2	84	11	0.0
27-12-24 (Friday)	0001	26	18	23	1016	NE	23	11	0.5	2	89	15	0.0
	0600			21	1018	NNE	15	9	0.4	2	90	12	0.0
	1200			24	1014	NW	13	5	0.3	2	76	16	0.0
	1800			23	1016	NE	11	3	0.3	2	81	11	0.0
28-12-24 (Saturday)	0001	26	18	22	1015	NNE	23	4	0.5	2	88	15	0.0
	0600			20	1017	NNW	15	8	0.4	2	89	16	0.0
	1200			24	1014	NNW	13	7	0.3	2	76	17	0.0
	1800			21	1015	NW	11	3	0.3	2	81	15	0.0

25 Dec 2024



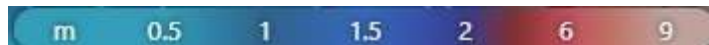
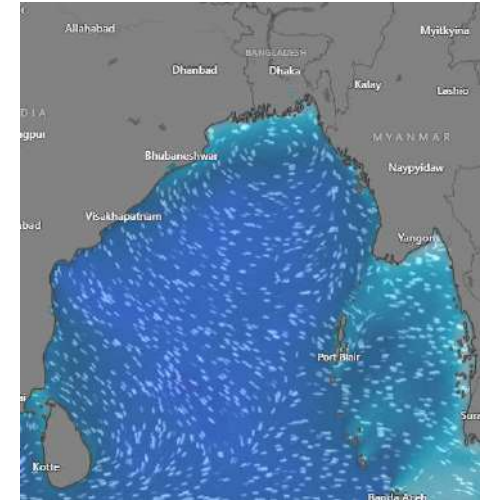
26 Dec 2024



27 Dec 2024



28 Dec 2024



Significant wave height (m)



MARINE WEATHER FORECAST (21 to 28 Dec 2024) ABEAM TO ELEPHANT POINT (21° 11' N, 091° 52' E)



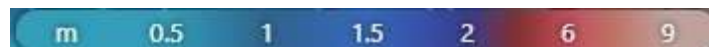
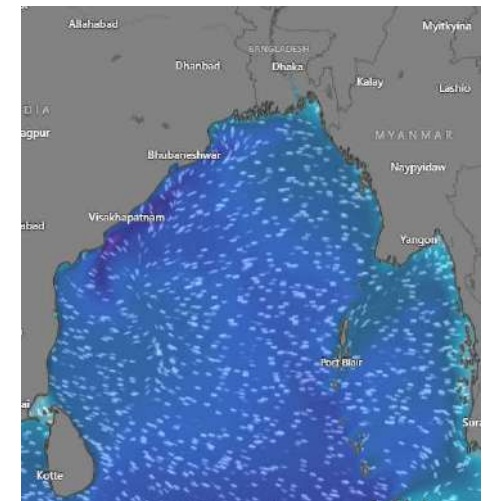
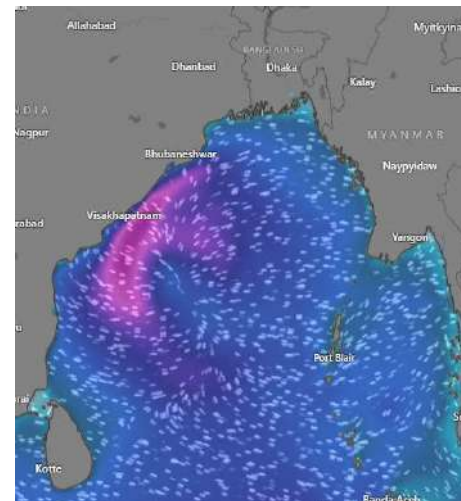
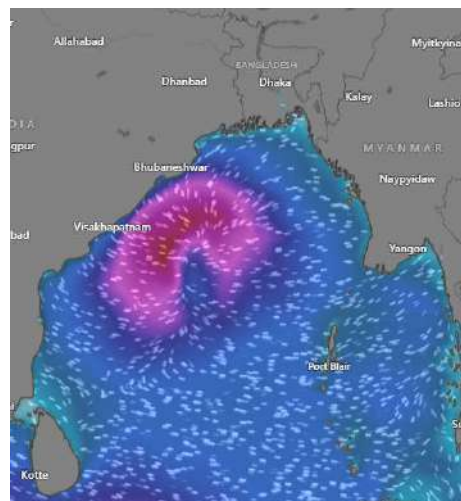
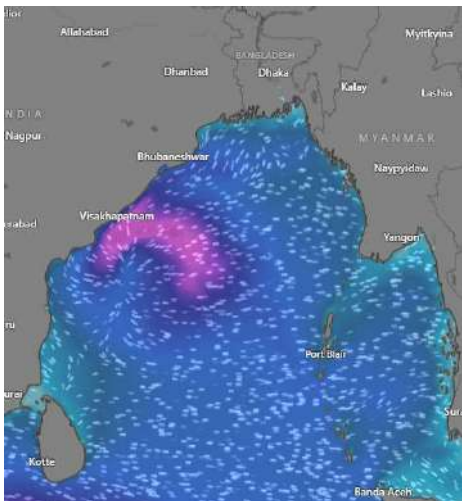
Date	Time	Air Temp (°C)		Sea Surface Temp (°C)	Baro Pressure (mbar)	Wind Direction	Wind Spd (kts)		Wave Ht (m)	Sea State	Humidity (%)	Prob of Rain (%)	Amount of Rain (mm)
		Max	Min				Gusting	Avg					
21-12-24 (Saturday)	0001	25	20	25	1012	N	15	10	0.9	3	88	10	0.0
	0600			24	1014	N	16	10	0.9	3	84	14	0.0
	1200			25	1011	NNW	27	20	1.1	3	65	11	0.0
	1800			24	1014	N	26	17	1.2	3	78	16	0.0
22-12-24 (Sunday)	0001	28	18	22	1013	NNW	16	9	0.8	3	86	12	0.0
	0600			22	1015	NNE	19	13	0.8	3	87	20	0.0
	1200			24	1011	N	16	11	0.8	3	65	24	0.0
	1800			23	1013	NNW	16	10	0.8	3	76	10	0.0
23-12-24 (Monday)	0001	28	19	23	1013	NNE	17	12	0.8	3	84	13	0.0
	0600			22	1015	NNE	15	10	0.9	3	85	15	0.0
	1200			24	1012	NNW	10	6	0.9	3	64	14	0.0
	1800			23	1014	NNW	12	9	0.9	3	73	10	0.0
24-12-24 (Tuesday)	0001	28	20	25	1013	NE	11	9	0.9	3	88	12	0.0
	0600			23	1015	NE	11	7	0.8	3	89	20	0.0
	1200			25	1012	NE	16	15	1.0	3	67	24	0.0
	1800			24	1014	N	17	15	1.0	3	75	10	0.0

21 Dec 2024

22 Dec 2024

23 Dec 2024

24 Dec 2024



Significant wave height (m)

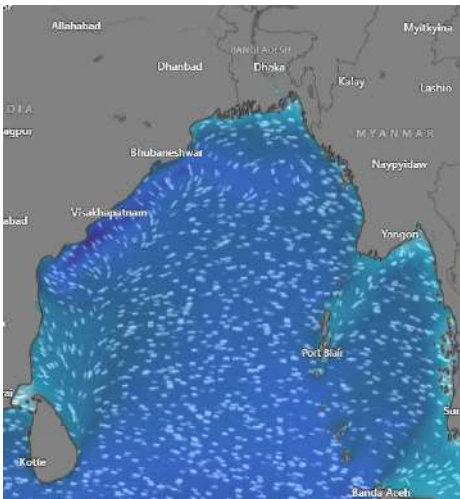


MARINE WEATHER FORECAST (21 to 28 Dec 2024) ABEAM TO ELEPHANT POINT (21° 11' N, 091° 52' E)

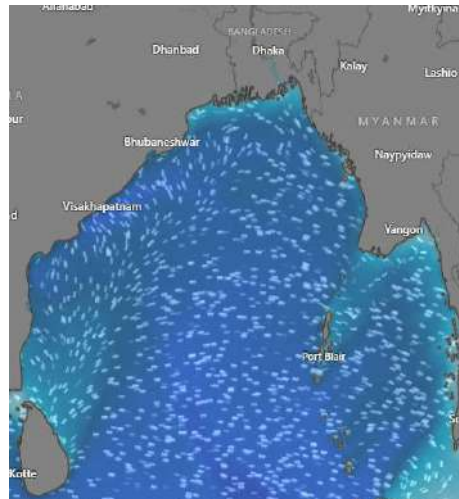


Date	Time	Air Temp (°C)		Sea Surface Temp (°C)	Baro Pressure (mbar)	Wind Direction	Wind Spd (kts)		Wave Ht (m)	Sea State	Humidity (%)	Prob of Rain (%)	Amount of Rain (mm)
		Max	Min				Gusting	Avg					
25-12-24 (Wednesday)	0001	26	19	24	1014	NNE	10	7	0.7	3	84	12	0.0
	0600			23	1016	NNE	11	7	0.6	3	87	20	0.0
	1200			26	1013	NE	10	8	0.6	3	83	24	0.0
	1800			25	1014	NNE	25	19	0.6	3	90	10	0.0
26-12-24 (Thursday)	0001	28	18	24	1015	NE	17	10	1.0	3	92	12	0.0
	0600			23	1018	NNE	20	12	1.0	3	93	20	0.0
	1200			26	1015	N	18	13	0.9	3	85	24	0.0
	1800			24	1016	NNE	15	9	1.4	4	87	19	0.0
27-12-24 (Friday)	0001	28	18	25	1016	NE	17	8	1.3	4	89	35	0.2
	0600			23	1016	NNE	14	7	1.2	3	90	33	0.2
	1200			25	1017	SSE	11	5	1.2	3	74	15	0.0
	1800			24	1014	SSE	13	4	1.1	3	83	16	0.0
28-12-24 (Saturday)	0001	27	18	25	1015	E	11	5	1.1	3	90	12	0.0
	0600			23	1016	NNE	12	9	1.0	3	91	13	0.0
	1200			25	1012	SSE	12	4	1.0	3	72	15	0.0
	1800			24	1014	S	7	3	0.9	3	83	14	0.0

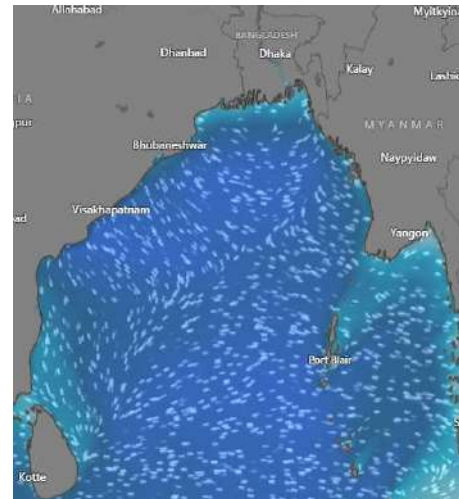
25 Dec 2024



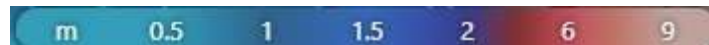
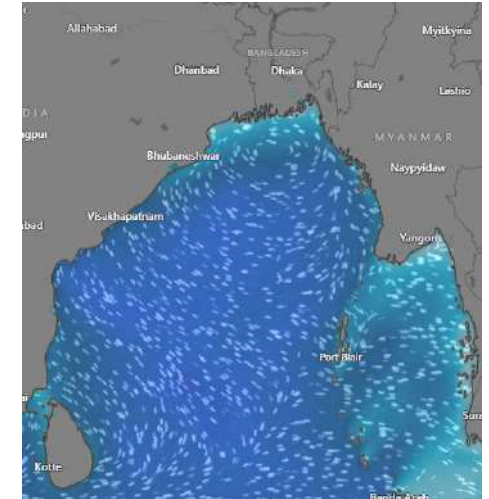
26 Dec 2024



27 Dec 2024



28 Dec 2024



Significant wave height (m)

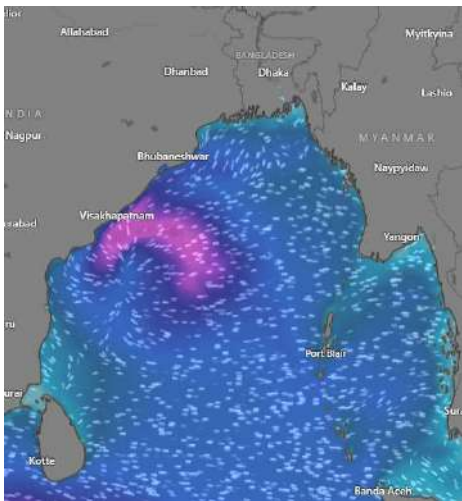


MARINE WEATHER FORECAST (21 to 28 Dec 2024) ABEAM TO ST. MARTIN'S LIGHT HOUSE (20° 37' N, 092° 08' E)

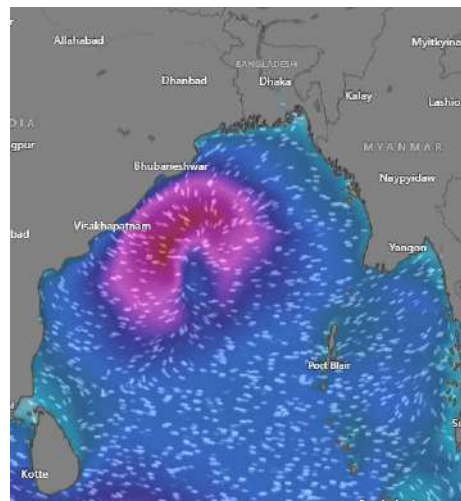


Date	Time	Air Temp (°C)		Sea Surface Temp (°C)	Baro Pressure (mbar)	Wind Direction	Wind Spd (kts)		Wave Ht (m)	Sea State	Humidity (%)	Prob of Rain (%)	Amount of Rain (mm)
		Max	Min				Gusting	Avg					
21-12-24 (Saturday)	0001	26	21	26	1013	NNW	13	9	1.0	3	84	12	0.0
	0600			26	1013	N	15	8	0.9	3	84	10	0.0
	1200			25	1011	N	18	14	1.0	3	68	10	0.0
	1800			24	1013	N	28	17	1.4	4	80	15	0.0
22-12-24 (Sunday)	0001	28	19	24	1014	N	14	3	0.9	3	85	14	0.0
	0600			23	1014	NE	17	11	0.9	3	86	12	0.0
	1200			25	1011	N	10	3	0.8	3	66	13	0.0
	1800			24	1013	NW	8	4	0.8	3	80	15	0.0
23-12-24 (Monday)	0001	29	20	25	1013	N	12	9	0.8	3	85	12	0.0
	0600			24	1014	N	10	5	0.9	3	86	10	0.0
	1200			26	1011	NNW	9	7	0.9	3	67	10	0.0
	1800			25	1013	NNW	9	4	0.9	3	77	12	0.0
24-12-24 (Tuesday)	0001	29	22	26	1013	E	13	10	0.9	3	83	12	0.0
	0600			24	1014	ENE	10	5	0.9	3	84	20	0.0
	1200			26	1011	E	10	7	0.9	3	62	24	0.0
	1800			25	1013	NE	13	9	1.0	3	75	10	0.0

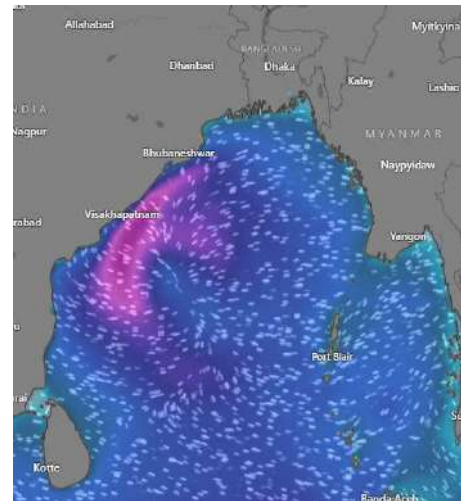
21 Dec 2024



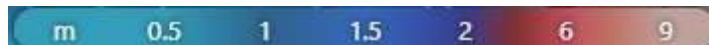
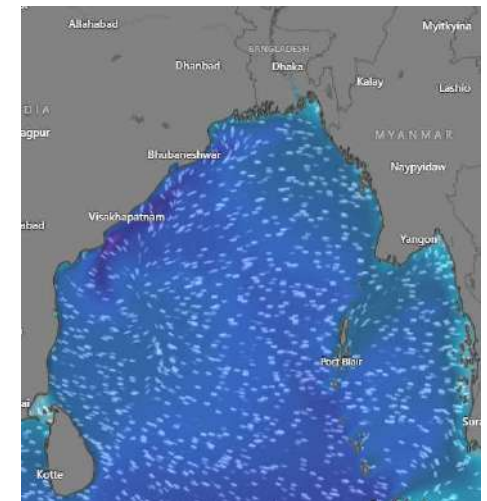
22 Dec 2024



23 Dec 2024



24 Dec 2024



Significant wave height (m)

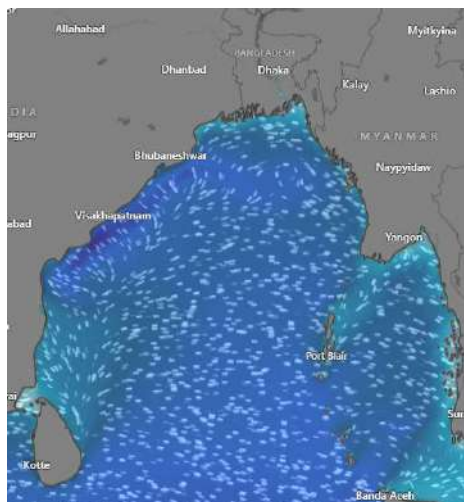


MARINE WEATHER FORECAST (21 to 28 Dec 2024) ABEAM TO ST. MARTIN'S LIGHT HOUSE (20° 37' N, 092° 08' E)

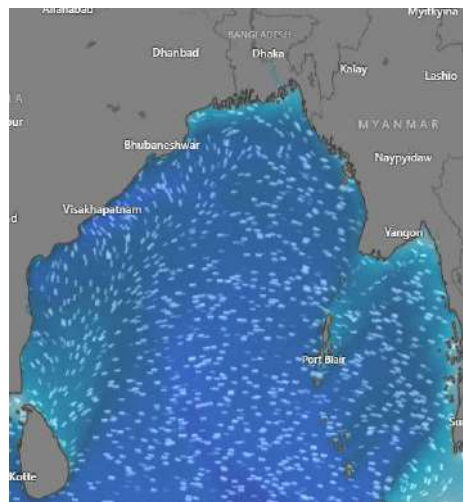


Date	Time	Air Temp (°C)		Sea Surface Temp (°C)	Baro Pressure (mbar)	Wind Direction	Wind Spd (kts)		Wave Ht (m)	Sea State	Humidity (%)	Prob of Rain (%)	Amount of Rain (mm)
		Max	Min				Gusting	Avg					
25-12-24 (Wednesday)	0001	28	21	26	1014	NE	12	8	1.0	3	83	12	0.0
	0600			25	1016	NNE	11	7	1.0	3	88	20	0.0
	1200			26	1012	NW	9	6	0.9	3	86	24	0.0
	1800			25	1014	WNW	20	12	0.9	3	90	10	0.0
26-12-24 (Thursday)	0001	30	20	27	1015	NE	11	7	1.0	3	90	12	0.0
	0600			25	1018	NNE	9	6	0.9	3	90	15	0.0
	1200			27	1016	NW	13	10	0.9	3	82	12	0.0
	1800			26	1013	NE	9	6	1.0	3	86	13	0.0
27-12-24 (Friday)	0001	29	19	27	1016	NE	16	14	1.1	3	90	12	0.0
	0600			26	1016	NNE	16	14	1.0	3	90	13	0.0
	1200			26	1013	NW	13	12	1.0	3	73	12	0.0
	1800			25	1015	NE	13	9	1.1	3	82	11	0.0
28-12-24 (Saturday)	0001	28	20	26	1015	NE	13	10	1.1	3	90	12	0.0
	0600			24	1016	NNE	13	10	1.0	3	90	13	0.0
	1200			26	1013	NW	14	7	1.0	3	73	12	0.0
	1800			25	1014	NE	12	9	1.1	3	82	11	0.0

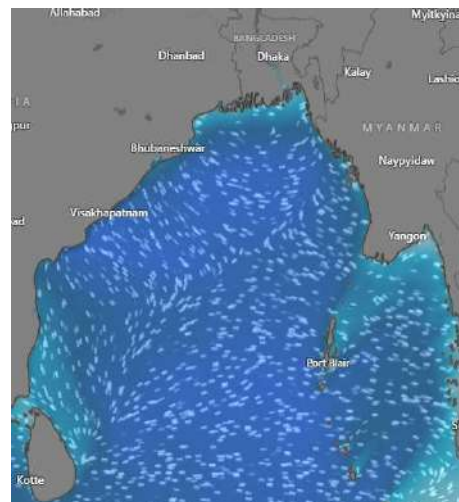
25 Dec 2024



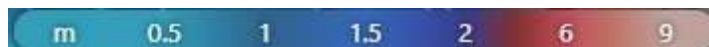
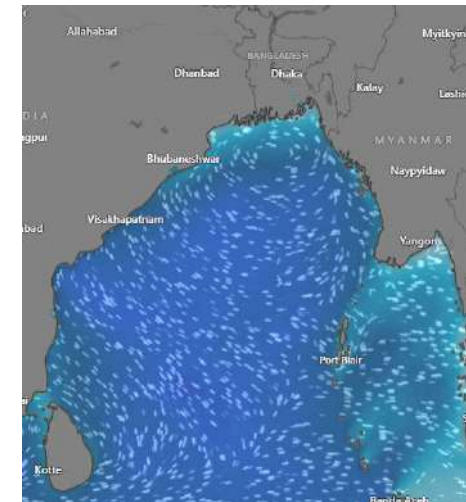
26 Dec 2024



27 Dec 2024



28 Dec 2024



Significant wave height (m)



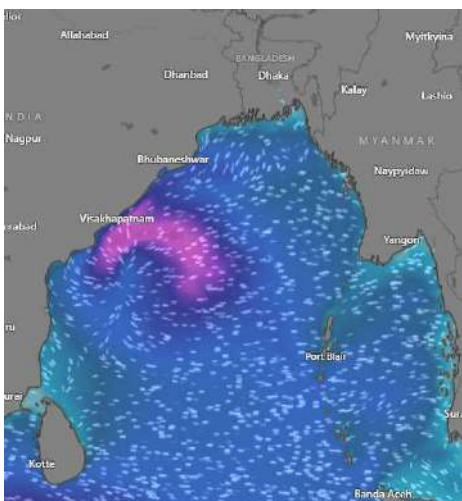
MARINE WEATHER FORECAST (21 to 28 Dec 2024)

PAYRA FAIRWAY (21° 22' N, 090° 6' E)

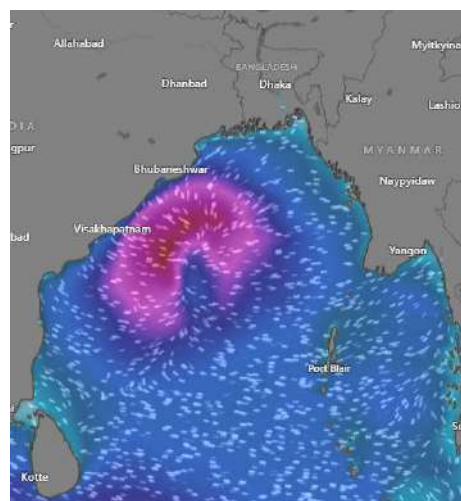


Date	Time	Air Temp (°C)		Sea Surface Temp (°C)	Baro Pressure (mbar)	Wind Direction	Wind Spd (kts)		Wave Ht (m)	Sea State	Humidity (%)	Prob of Rain (%)	Amount of Rain (mm)
		Max	Min				Gusting	Avg					
21-12-24 (Saturday)	0001	22	17	25	1012	NNW	13	8	0.8	3	82	12	0.0
	0600			24	1014	N	16	12	0.8	3	81	10	0.0
	1200			25	1013	N	19	12	0.9	3	58	09	0.0
	1800			23	1014	N	21	10	0.9	3	74	15	0.0
22-12-24 (Sunday)	0001	27	17	21	1013	ENE	13	8	0.8	3	78	10	0.0
	0600			22	1015	NE	17	12	0.8	3	79	34	0.2
	1200			24	1011	NNE	16	10	0.8	3	59	47	0.5
	1800			23	1012	N	11	5	0.7	3	69	20	0.0
23-12-24 (Monday)	0001	27	19	24	1013	NNE	17	13	0.8	3	77	36	0.2
	0600			23	1016	NNE	18	13	1.0	3	80	20	0.0
	1200			24	1011	NNE	16	11	1.0	3	56	24	0.0
	1800			23	1013	NNE	7	4	0.9	3	67	11	0.0
24-12-24 (Tuesday)	0001	25	19	24	1013	NE	13	10	0.8	3	77	48	0.3
	0600			23	1015	NNE	17	13	0.9	3	80	40	0.2
	1200			24	1013	NW	27	15	1.1	3	56	24	0.0
	1800			23	1013	NE	22	14	1.0	3	67	10	0.0

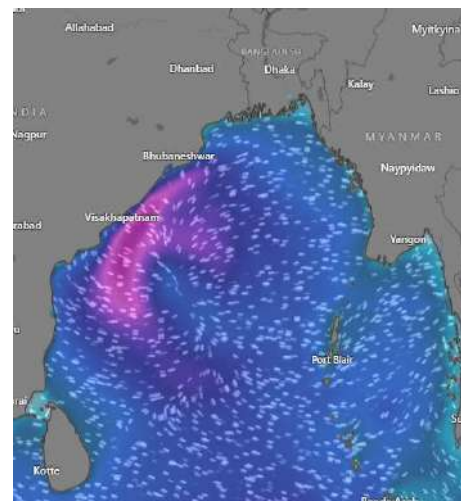
21 Dec 2024



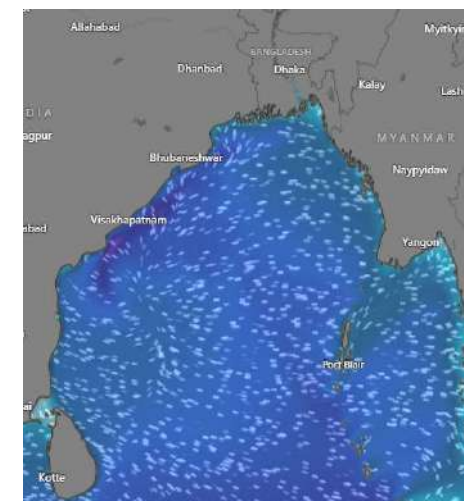
22 Dec 2024



23 Dec 2024



24 Dec 2024



Significant wave height (m)



MARINE WEATHER FORECAST (21 to 28 Dec 2024)

PAYRA FAIRWAY (21° 22' N, 090° 6' E)



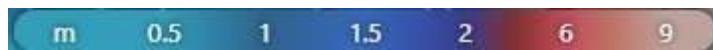
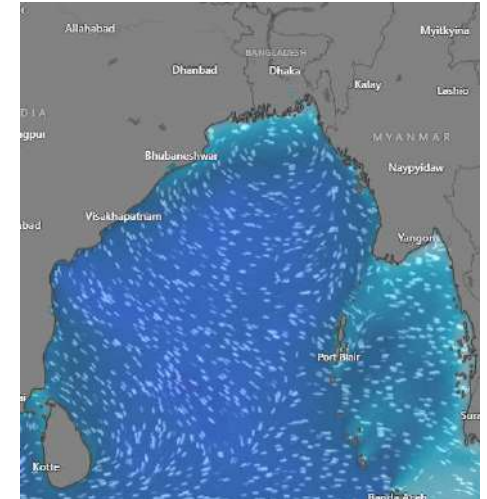
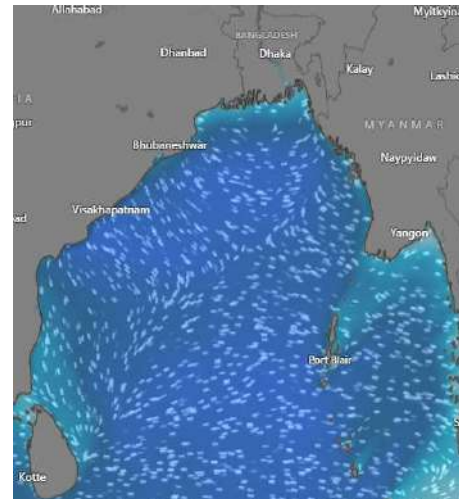
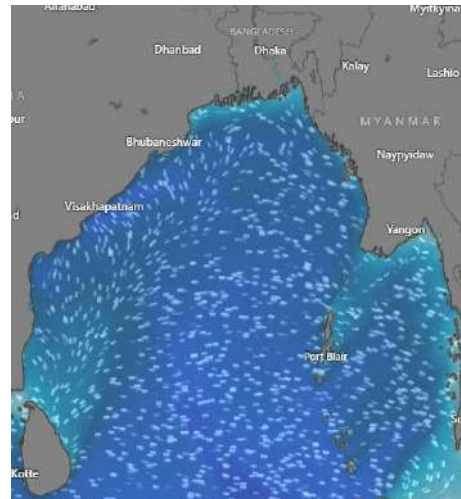
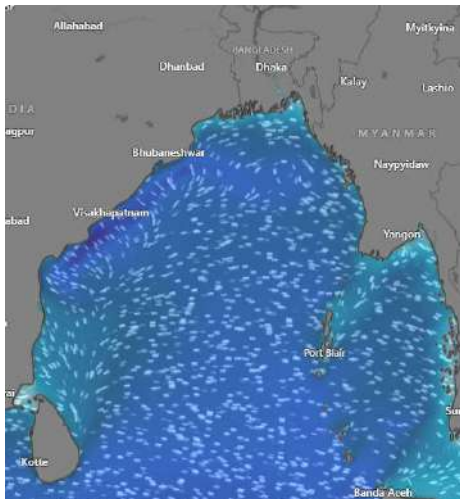
Date	Time	Air Temp (°C)		Sea Surface Temp (°C)	Baro Pressure (mbar)	Wind Direction	Wind Spd (kts)		Wave Ht (m)	Sea State	Humidity (%)	Prob of Rain (%)	Amount of Rain (mm)
		Max	Min				Gusting	Avg					
25-12-24 (Wednesday)	0001	26	18	24	1014	NE	6	3	1.0	3	88	12	0.0
	0600			23	1017	NNE	13	10	1.1	3	91	20	0.0
	1200			24	1014	NW	25	15	1.1	3	90	24	0.0
	1800			24	1015	WNW	21	14	1.1	3	88	10	0.0
26-12-24 (Thursday)	0001	28	18	25	1016	NE	15	11	1.0	3	92	12	0.0
	0600			24	1019	NNE	14	12	1.0	3	93	12	0.0
	1200			25	1016	NW	15	11	1.1	3	75	13	0.0
	1800			24	1018	NE	12	11	1.1	3	74	12	0.0
27-12-24 (Friday)	0001	27	17	25	1016	NE	22	14	1.2	3	82	12	0.0
	0600			24	1019	NNE	23	16	1.0	3	85	10	0.0
	1200			23	1014	NW	15	15	0.9	3	64	12	0.0
	1800			24	1016	NE	14	14	0.9	3	73	11	0.0
28-12-24 (Saturday)	0001	27	18	24	1015	NE	18	12	1.2	3	85	12	0.0
	0600			23	1017	NNE	20	14	1.0	3	84	10	0.0
	1200			24	1013	NW	19	16	0.9	3	66	12	0.0
	1800			23	1014	NE	16	12	0.9	3	74	11	0.0

25 Dec 2024

26 Dec 2024

27 Dec 2024

28 Dec 2024



Significant wave height (m)

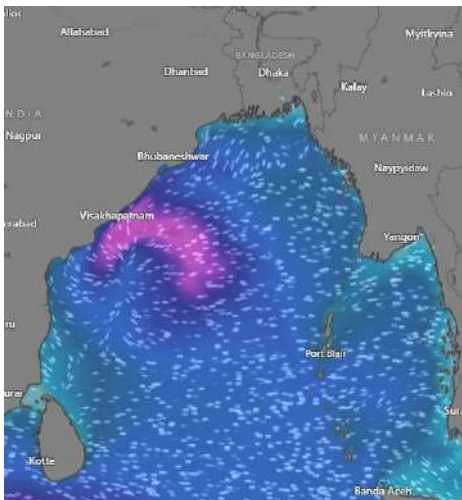


MARINE WEATHER FORECAST (21 to 28 Dec 2024) MONGLA FAIRWAY (21° 26' N, 089° 34' E)

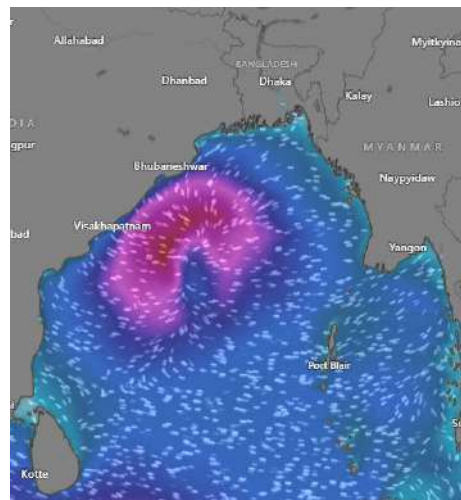


Date	Time	Air Temp (°C)		Sea Surface Temp (°C)	Baro Pressure (mbar)	Wind Direction	Wind Spd (kts)		Wave Ht (m)	Sea State	Humidity (%)	Prob of Rain (%)	Amount of Rain (mm)
		Max	Min				Gusting	Avg					
21-12-24 (Saturday)	0001	22	15	24	1013	WNW	15	7	0.9	3	87	14	0.0
	0600			21	1016	NW	21	15	0.9	3	89	11	0.0
	1200			21	1013	SE	16	11	0.9	3	52	20	0.0
	1800			20	1014	ENE	18	9	0.9	3	63	13	0.0
22-12-24 (Sunday)	0001	27	16	22	1013	E	13	7	0.8	3	84	10	0.0
	0600			23	1015	NE	17	13	0.9	3	85	15	0.0
	1200			24	1012	NE	16	11	0.9	3	56	33	0.2
	1800			23	1014	ENE	12	9	0.8	3	65	36	0.2
23-12-24 (Monday)	0001	28	17	24	1013	NNE	16	12	0.9	3	82	13	0.0
	0600			24	1016	NNE	17	12	1.0	3	87	14	0.0
	1200			24	1012	NNE	17	12	1.1	3	55	11	0.0
	1800			23	1014	NW	9	7	1.0	3	66	12	0.0
24-12-24 (Tuesday)	0001	26	18	24	1013	NE	13	10	0.9	3	81	24	0.0
	0600			23	1016	NNE	18	14	1.0	3	87	20	0.0
	1200			25	1014	NW	23	14	1.1	3	55	36	0.2
	1800			24	1015	NE	22	14	1.0	3	62	24	0.0

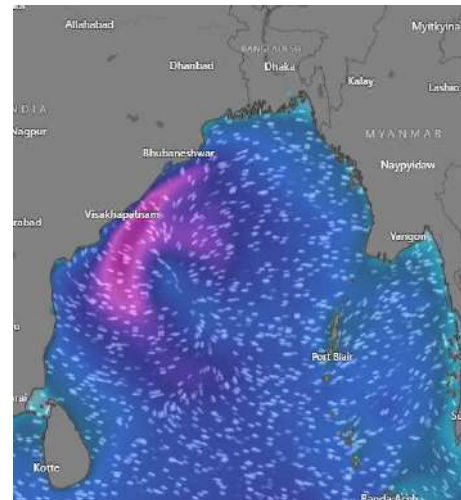
21 Dec 2024



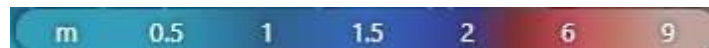
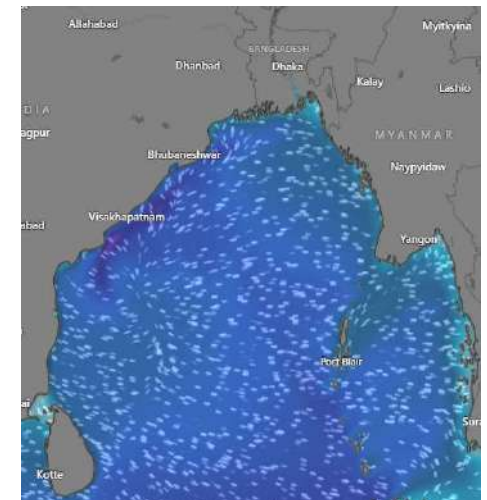
22 Dec 2024



23 Dec 2024



24 Dec 2024



Significant wave height (m)



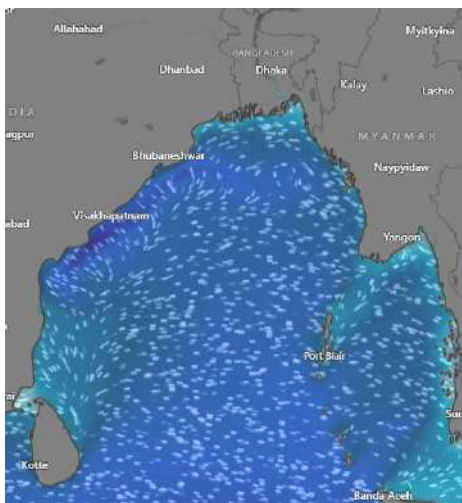
MARINE WEATHER FORECAST (21 to 28 Dec 2024)

MONGLA FAIRWAY (21° 26' N, 089° 34' E)

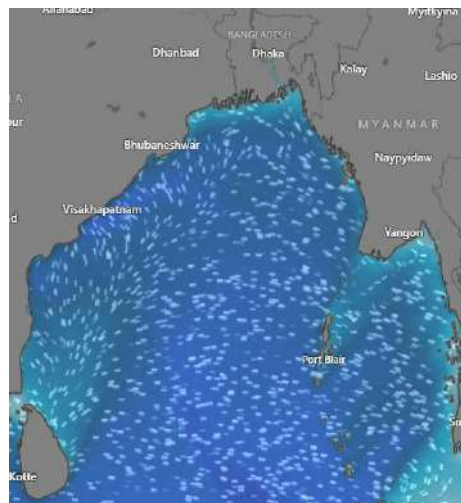


Date	Time	Air Temp (°C)		Sea Surface Temp (°C)	Baro Pressure (mbar)	Wind Direction	Wind Spd (kts)		Wave Ht (m)	Sea State	Humidity (%)	Prob of Rain (%)	Amount of Rain (mm)
		Max	Min				Gusting	Avg					
25-12-24 (Wednesday)	0001	27	16	25	1015	NE	8	6	1.1	3	88	13	0.0
	0600			24	1016	NNE	16	12	1.1	3	91	32	0.2
	1200			25	1014	NW	25	15	1.2	3	85	24	0.0
	1800			24	1015	WNW	22	14	1.1	3	85	24	0.0
26-12-24 (Thursday)	0001	28	16	24	1016	NE	16	12	1.1	3	95	24	0.0
	0600			23	1019	NNE	14	9	1.1	3	95	24	0.0
	1200			25	1016	NW	16	12	1.1	3	64	10	0.0
	1800			24	1018	NE	14	12	1.1	3	71	9	0.0
27-12-24 (Friday)	0001	28	15	25	1017	NE	20	16	1.0	3	85	12	0.0
	0600			24	1019	NNE	18	12	1.0	3	89	10	0.0
	1200			25	1015	NW	18	11	0.8	3	56	12	0.0
	1800			24	1017	NE	16	4	0.9	3	65	11	0.0
28-12-24 (Saturday)	0001	27	17	24	1015	NE	18	13	1.0	3	85	12	0.0
	0600			23	1017	NNE	18	12	1.0	3	89	10	0.0
	1200			25	1013	NW	18	11	0.8	3	56	12	0.0
	1800			24	1015	NE	16	4	0.9	3	65	11	0.0

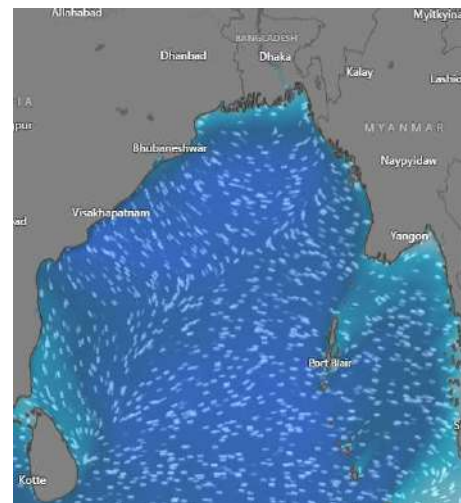
25 Dec 2024



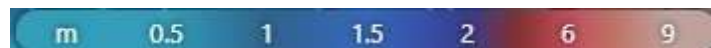
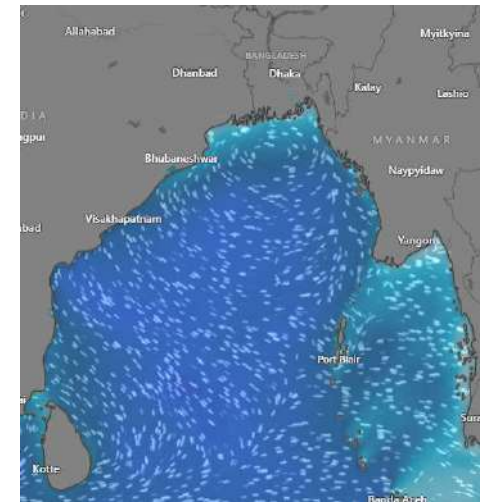
26 Dec 2024



27 Dec 2024



28 Dec 2024



Significant wave height (m)

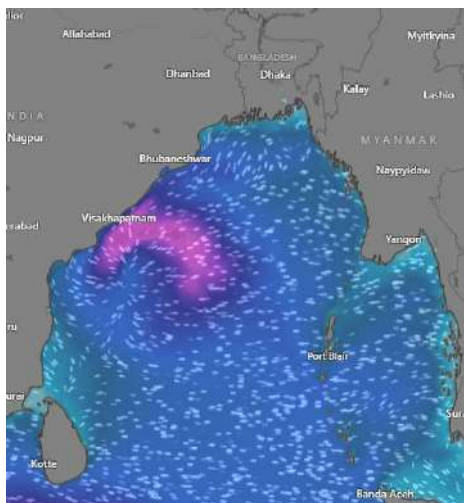


MARINE WEATHER FORECAST (21 to 28 Dec 2024) OUTER EEZ (18° 48' N, 090° 30' E)

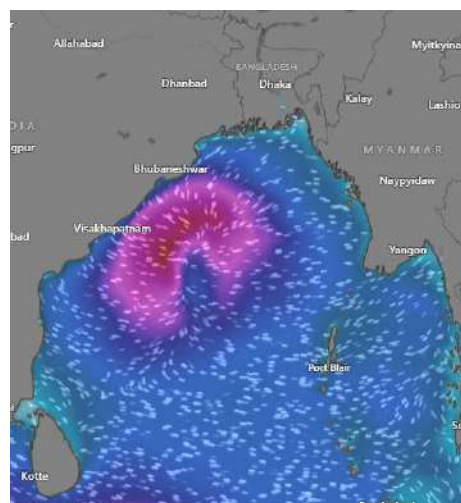


Date	Time	Air Temp (°C)		Sea Surface Temp (°C)	Baro Pressure (mbar)	Wind Direction	Wind Spd (kts)		Wave Ht (m)	Sea State	Humidity (%)	Prob of Rain (%)	Amount of Rain (mm)
		Max	Min				Gusting	Avg					
21-12-24 (Saturday)	0001	26	21	25	1012	NE	10	7	1.1	3	90	11	0.0
	0600			25	1014	ENE	11	9	1.1	3	91	14	0.0
	1200			26	1011	NE	16	11	1.1	3	72	09	0.0
	1800			24	1012	NE	24	18	1.4	4	81	13	0.0
22-12-24 (Sunday)	0001	28	19	24	1012	NE	24	15	1.6	4	89	16	0.0
	0600			23	1014	ENE	19	14	1.5	3	90	15	0.0
	1200			25	1011	ENE	15	8	1.3	4	71	14	0.0
	1800			24	1013	ENE	13	10	1.4	4	77	12	0.0
23-12-24 (Monday)	0001	29	20	25	1012	NE	13	9	1.5	4	81	14	0.0
	0600			24	1014	NE	14	10	1.3	4	84	11	0.0
	1200			25	1012	NNE	16	10	1.3	4	67	12	0.0
	1800			24	1013	NE	13	9	1.3	4	76	14	0.0
24-12-24 (Tuesday)	0001	29	22	25	1013	NE	11	6	0.8	3	82	13	0.0
	0600			26	1015	NNE	10	6	0.7	3	87	12	0.0
	1200			25	1011	NW	13	8	0.8	3	65	20	0.0
	1800			24	1014	NE	10	6	0.9	3	76	24	0.0

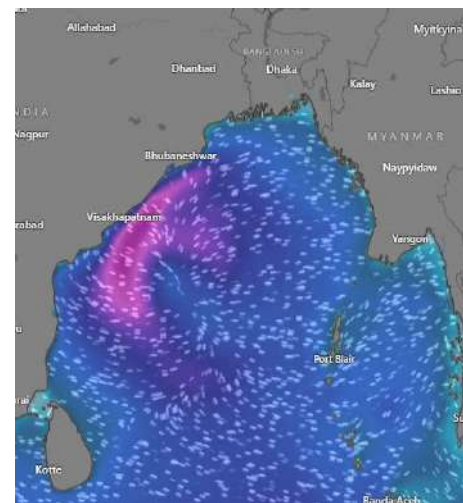
21 Dec 2024



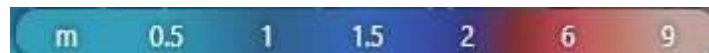
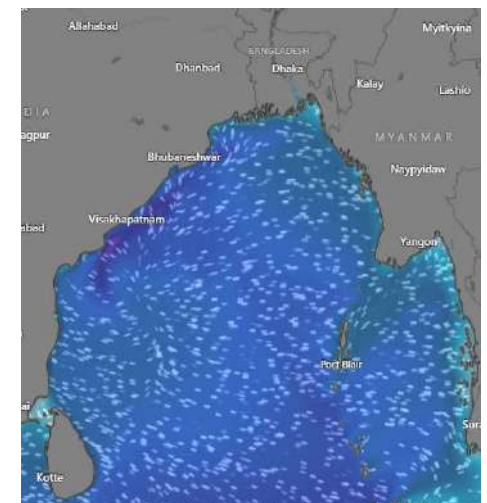
22 Dec 2024



23 Dec 2024



24 Dec 2024



Significant wave height (m)



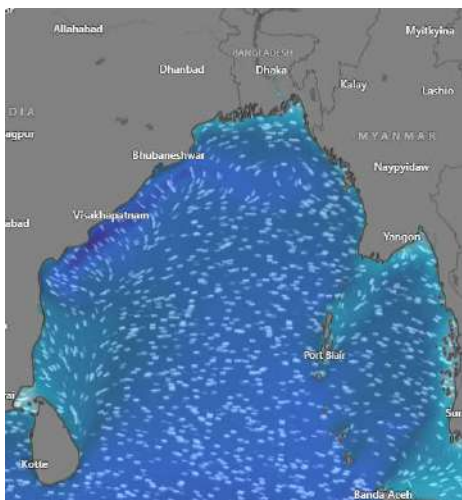
MARINE WEATHER FORECAST (21 to 28 Dec 2024)

OUTER EEZ (18° 48' N, 090° 30' E)

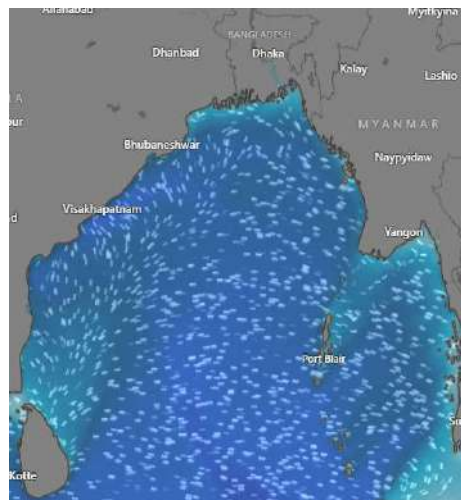


Date	Time	Air Temp (°C)		Sea Surface Temp (°C)	Baro Pressure (mbar)	Wind Direction	Wind Spd (kts)		Wave Ht (m)	Sea State	Humidity (%)	Prob of Rain (%)	Amount of Rain (mm)
		Max	Min				Gusting	Avg					
25-12-24 (Wednesday)	0001	28	21	26	1014	NE	11	7	1.3	4	89	12	0.0
	0600			25	1016	NNE	9	7	1.3	4	91	20	0.0
	1200			26	1013	NW	10	7	1.2	4	82	24	0.0
	1800			26	1016	WNW	9	6	1.1	4	83	10	0.0
26-12-24 (Thursday)	0001	30	20	26	1015	NE	11	7	1.3	4	92	24	0.0
	0600			26	1018	NNE	13	9	1.2	3	93	10	0.0
	1200			26	1014	NW	11	7	1.3	4	66	9	0.0
	1800			26	1017	NE	13	10	1.3	4	77	9	0.0
27-12-24 (Friday)	0001	29	19	26	1016	NE	19	6	1.2	4	84	12	0.0
	0600			25	1018	NNE	21	12	1.4	4	88	10	0.0
	1200			27	1015	NW	21	6	1.4	4	61	12	0.0
	1800			26	1017	NE	18	6	1.4	4	65	11	0.0
28-12-24 (Saturday)	0001	28	20	26	1015	NE	19	8	1.4	4	87	12	0.0
	0600			25	1017	NNE	21	5	1.3	4	89	10	0.0
	1200			26	1012	NW	21	9	1.3	4	55	12	0.0
	1800			26	1015	NE	18	9	1.2	3	64	11	0.0

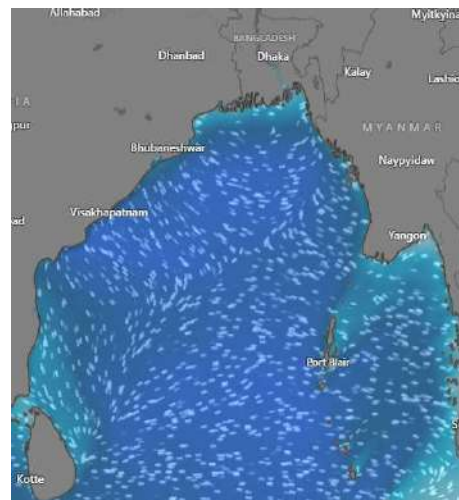
25 Dec 2024



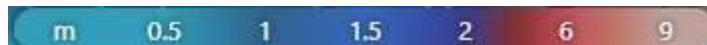
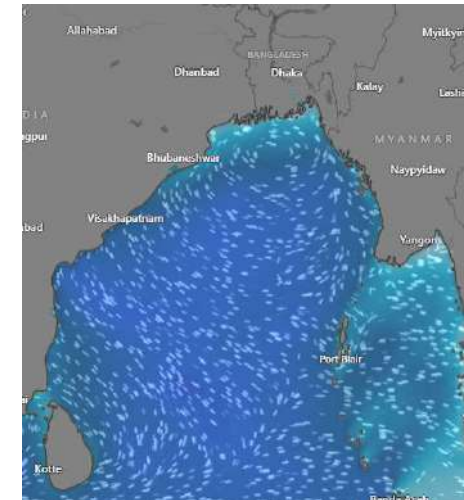
26 Dec 2024



27 Dec 2024



28 Dec 2024



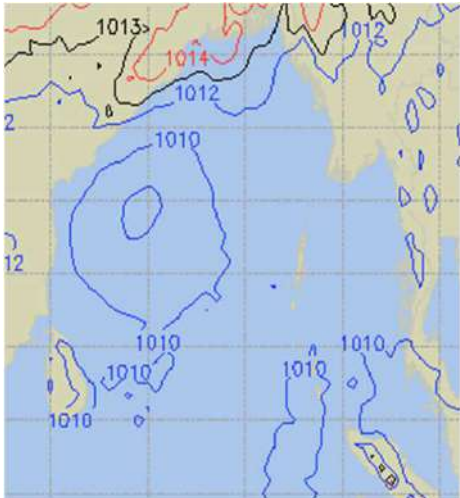
Significant wave height (m)



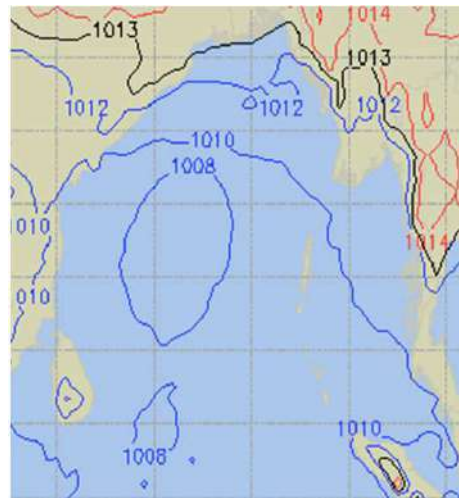
PREDICTED SURFACE PRESSURE FORECAST (21 to 27 Dec 2024)



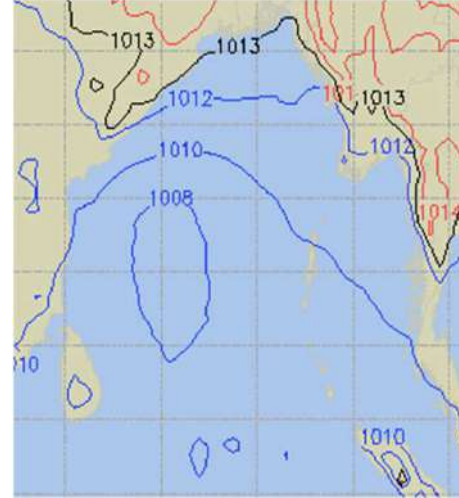
21 Dec 2024



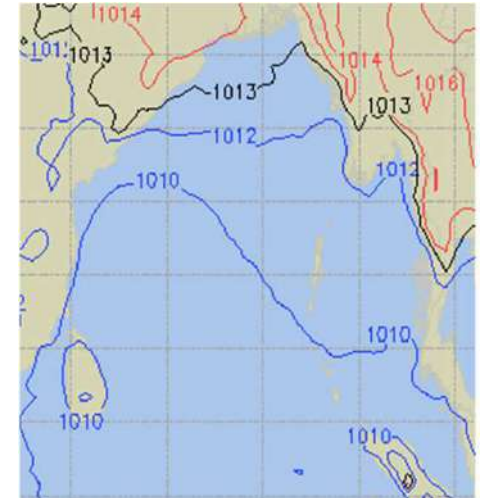
22 Dec 2024



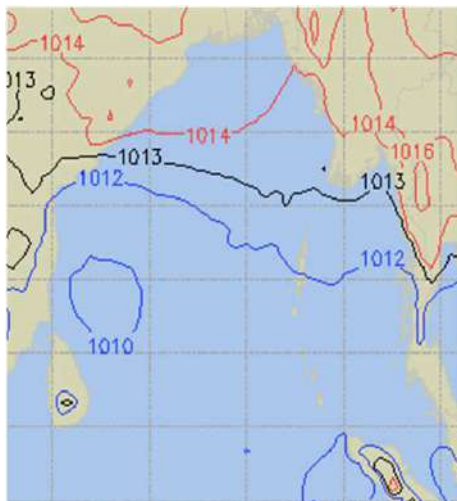
23 Dec 2024



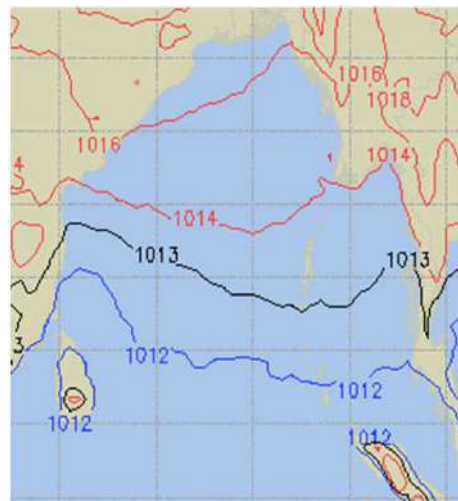
24 Dec 2024



25 Dec 2024



26 Dec 2024



27 Dec 2024

