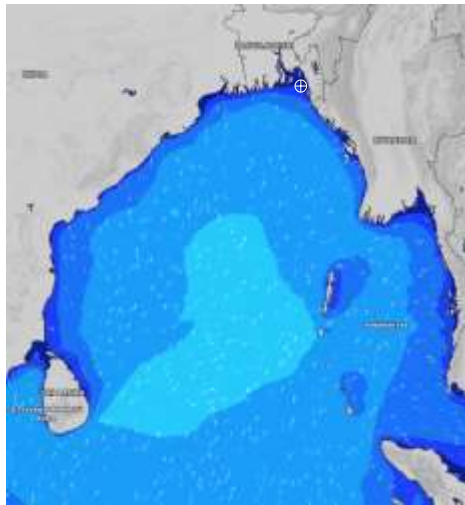


MARINE WEATHER FORECAST- NEAR AUTHORITY BUOY (Lat 22° 12' N, Long 091° 38' E)

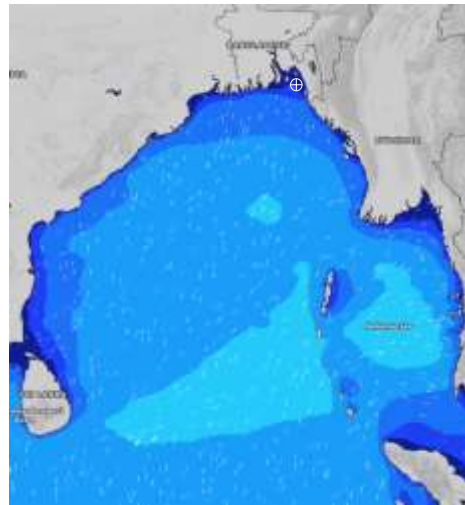
DATE : 21 to 28 June 2024

Date	Time	Max Wind Spd (kts)	Wind Direction	Wave Ht (m)	Sea State	Baro Pressure	Air Temp		Sea Surface Temp	Humidity (%)	Prb of Rain (%)	Sea State	Wave Ht (m)
							Max	Min					
21-06-24	0001	12	SE	0.3	2	1003	29	26	28	93%	50% (0.5 mm)	0	0
	0600	13	SSE	0.3	2	1003			28	94%	32% (0.2 mm)	1	0 - 0.1
	1200	14	SSW	0.3	2	1003			29	86%	90% (2.2 mm)	2	0.1 - 0.5
	1800	13	SSW	0.2	2	1001			29	88%	34% (0.2 mm)	3	0.5 - 1.25
22-06-24	0001	15	SSE	0.3	2	1002	31	27	28	91%	44% (0.4 mm)	4	1.25 - 2.5
	0600	15	SSE	0.3	2	1002			28	94%	43% (0.4 mm)	5	2.5 - 4.0
	1200	14	SSW	0.3	2	1002			28	81%	49% (0.5 mm)	6	4.0 - 6.0
	1800	13	SSW	0.3	2	1001			29	87%	24% (0.1 mm)	7	6.0 - 9.0
23-06-24	0001	15	SSE	0.3	2	1003	31	27	28	91%	34% (0.2 mm)	8	9.0 - 14.0
	0600	12	SSE	0.3	2	1004			27	93%	32% (0.2 mm)	9	Over 14.0
	1200	13	SSW	0.3	2	1003			28	78%	36% (0.2 mm)		
	1800	11	SSW	0.2	2	1001			29	86%	24% (0.1 mm)		
24-06-24	0001	13	S	0.3	2	1003	31	27	28	90%	34% (0.2 mm)		
	0600	10	SSE	0.2	2	1003			28	94%	44% (0.4 mm)		
	1200	9	SSW	0.2	2	1002			28	79%	43% (0.4 mm)		
	1800	7	SSW	0.1	1	1001			29	85%	24% (0.1 mm)		

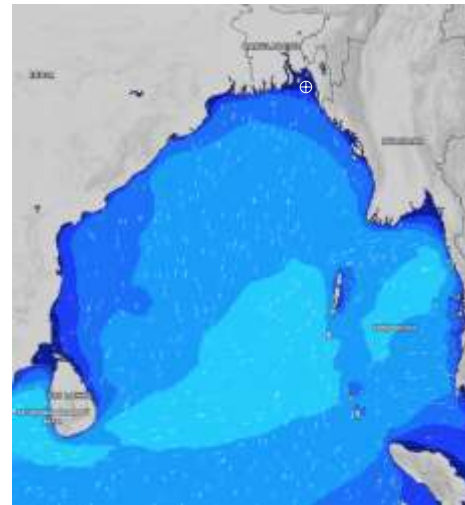
21 June 24 Fri (Probability 98%)



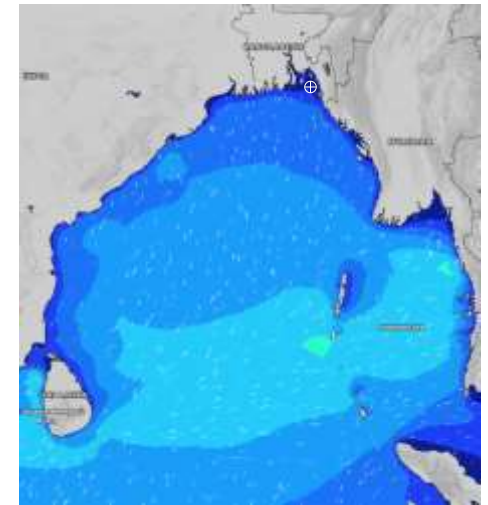
22 June 24 Sat (Probability 95%)



23 June 24 Sun (Probability 90%)



24 June 24 Mon (Probability 80%)



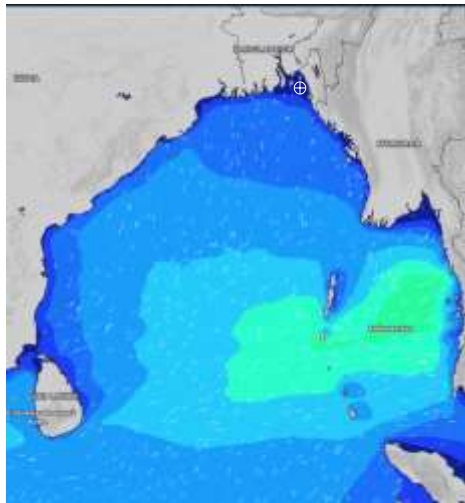
Significant wave height (m)

MARINE WEATHER FORECAST- NEAR AUTHORITY BUOY (Lat 22° 12' N, Long 091° 38' E)

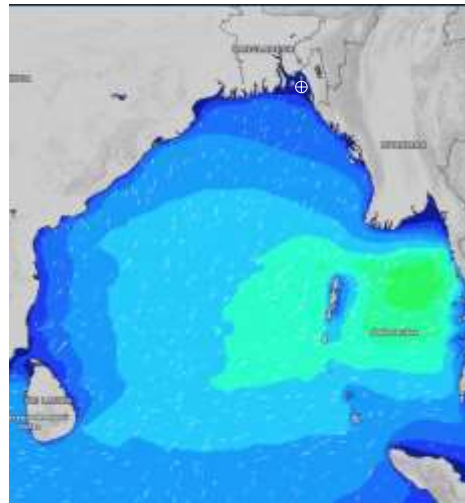
DATE : 21 to 28 June 2024

Date	Time	Max Wind Spd (kts)	Wind Direction	Wave Ht (m)	Sea State	Baro Pressure	Air Temp		Sea Surface Temp	Humidity (%)	Prob of Rain (%)	Sea State	Wave Ht (m)
							Max	Min					
25-06-24	0001	11	S	0.2	2	1002	30	27	29	91%	47% (0.4 mm)	0	0
	0600	9	SSE	0.2	2	1001			28	94%	48% (0.5 mm)	1	0 - 0.1
	1200	5	SSW	0.1	1	1001			28	81%	54% (0.4 mm)	2	0.1 - 0.5
	1800	7	S	0.1	1	999			29	87%	22% (0.0 mm)	3	0.5 - 1.25
26-06-24	0001	6	SSE	0.1	1	1000	30	27	28	91%	40% (1.2 mm)	4	1.25 - 2.5
	0600	8	SE	0.1	1	1000			27	93%	30% (2.1 mm)	5	2.5 - 4.0
	1200	4	S	0.1	1	1000			29	78%	42% (0.4 mm)	6	4.0 - 6.0
	1800	5	S	0.1	1	998			28	86%	24% (0.1 mm)	7	6.0 - 9.0
27-06-24	0001	3	SSE	0.1	1	1000	30	27	28	90%	44% (0.4 mm)	8	9.0 - 14.0
	0600	4	ENE	0.1	1	1000			27	94%	43% (0.4 mm)	9	Over 14.0
	1200	8	WSW	0.1	1	998			29	79%	49% (0.5 mm)		
	1800	12	WSW	0.3	2	997			29	89%	24% (0.1 mm)		
28-06-24	0001	13	SSE	0.1	1	1000	30	26	28	91%	34% (0.2 mm)		
	0600	4	ENE	0.2	2	999			27	94%	32% (0.2 mm)		
	1200	15	WSW	0.2	2	998			29	89%	36% (0.2 mm)		
	1800	17	WSW	0.3	2	997			29	89%	24% (0.1 mm)		

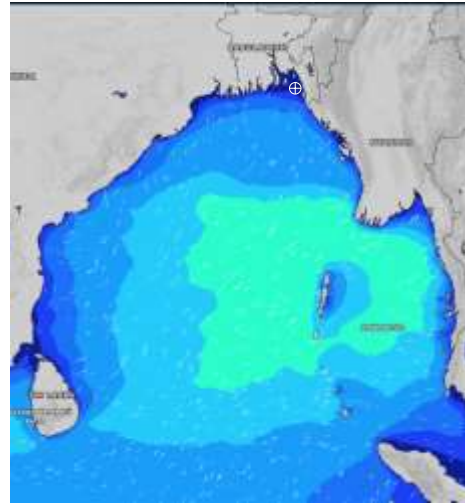
25 June 24 Tue (Probability 70%)



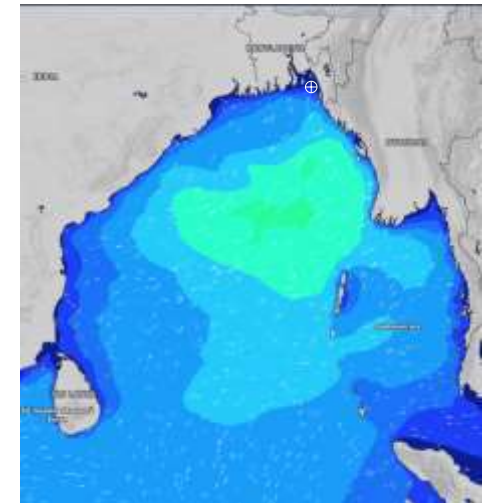
26 June 24 Wed (Probability 60%)



27 June 24 Thu (Probability 50%)



28 June 24 Fri (Probability 50%)



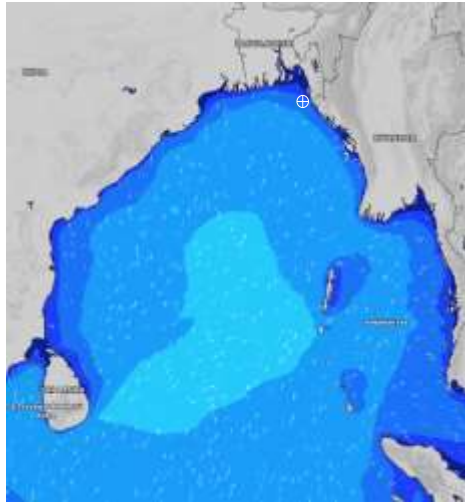
Significant wave height (m)

MARINE WEATHER FORECAST- 20 NM WEST OF ELEPHANT POINT (Lat 21° 10'N, Long 091° 42' E)

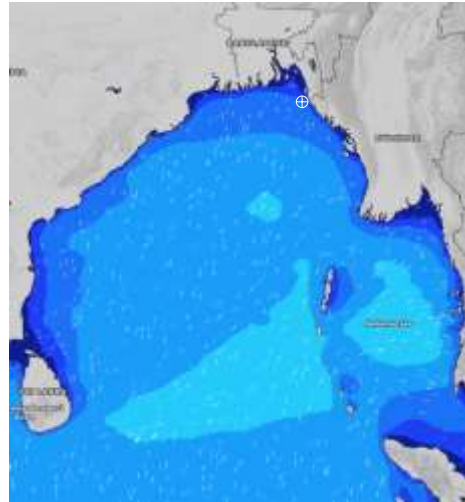
DATE : 21 to 28 June 2024

Date	Time	Max Wind Spd (kts)	Wind Direction	Wave Ht (m)	Sea State	Baro Pressure	Air Temp		Sea Surface Temp	Humidity (%)	Prob of Rain (%)	Sea State	Wave Ht (m)
							Max	Min					
21-06-24	0001	10	SSE	1.4	4	1003	29	26	29	91%	37% (0.2 mm)	0	0
	0600	14	SSE	1.4	4	1003			28	96%	50% (2.4 mm)	1	0 - 0.1
	1200	12	SSE	1.4	4	1003			29	89%	93% (1.5 mm)	2	0.1 - 0.5
	1800	13	S	1.4	4	1001			29	91%	54% (2.4 mm)	3	0.5 - 1.25
22-06-24	0001	13	SSE	1.3	4	1002	30	27	29	91%	54% (2.4 mm)	4	1.25 - 2.5
	0600	14	SE	1.3	4	1002			29	93%	45% (0.4 mm)	5	2.5 - 4.0
	1200	14	SSE	1.3	4	1002			29	84%	47% (0.5 mm)	6	4.0 - 6.0
	1800	12	S	1.3	4	1001			29	88%	54% (0.4 mm)	7	6.0 - 9.0
23-06-24	0001	11	S	1.3	4	1003	30	27	29	91%	40% (1.2 mm)	8	9.0 - 14.0
	0600	8	SSE	1.3	4	1004			28	93%	30% (2.1 mm)	9	Over 14.0
	1200	9	S	1.3	4	1003			29	80%	42% (0.4 mm)		
	1800	9	SSW	1.3	4	1001			29	87%	24% (0.1 mm)		
24-06-24	0001	9	S	1.2	3	1003	30	27	29	92%	40% (1.2 mm)		
	0600	5	SSW	1.2	3	1003			28	93%	30% (2.1 mm)		
	1200	7	SSW	1.2	3	1002			29	79%	42% (0.4 mm)		
	1800	6	SW	1.1	3	1001			29	87%	24% (0.1 mm)		

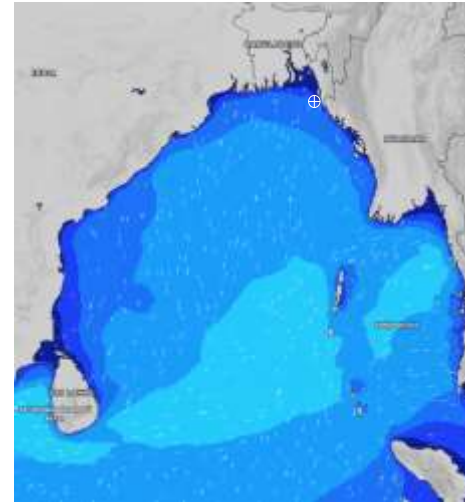
21 June 24 Fri (Probability 98%)



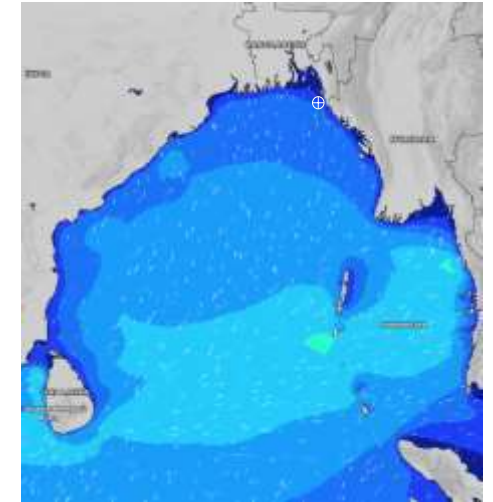
22 June 24 Sat (Probability 95%)



23 June 24 Sun (Probability 90%)



24 June 24 Mon (Probability 80%)



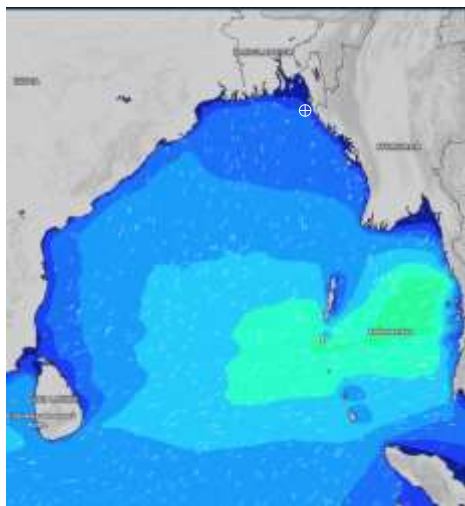
Significant wave height (m)

MARINE WEATHER FORECAST- 20 NM WEST OF ELEPHANT POINT (Lat 21° 10' N, Long 091° 42' E)

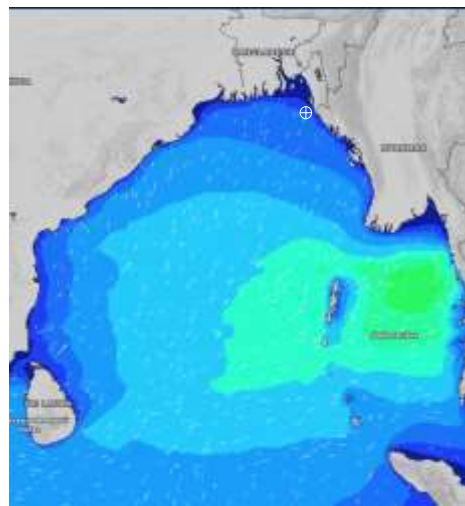
DATE : 21 to 28 June 2024

Date	Time	Max Wind Spd (kts)	Wind Direction	Wave Ht (m)	Sea State	Baro Pressure	Air Temp		Sea Surface Temp	Humidity (%)	Prob of Rain (%)	Sea State	Wave Ht (m)
							Max	Min					
25-06-24	0001	9	S	1.2	3	1002	30	27	29	90%	71% (1.5 mm)	0	0
	0600	8	SSE	1.1	3	1001			28	92%	75% (1.3 mm)	1	0 - 0.1
	1200	4	SSE	1.1	3	1001			29	87%	55% (0.4 mm)	2	0.1 - 0.5
	1800	4	SSE	1.1	3	999			29	86%	36% (0.3 mm)	3	0.5 - 1.25
26-06-24	0001	8	SSE	1.1	3	1000	30	26	29	91%	88% (1.5 mm)	4	1.25 - 2.5
	0600	7	SE	1.1	3	1000			28	92%	75% (1.3 mm)	5	2.5 - 4.0
	1200	8	SSE	1.2	3	1000			29	87%	69% (2.2 mm)	6	4.0 - 6.0
	1800	5	SSE	1.2	3	998			29	86%	36% (0.3 mm)	7	6.0 - 9.0
27-06-24	0001	4	SE	1.3	4	1000	30	26	29	91%	70% (1.5 mm)	8	9.0 - 14.0
	0600	3	ESE	1.3	4	1000			28	92%	75% (1.3 mm)	9	Over 14.0
	1200	4	SSE	1.4	4	998			29	87%	56% (0.4 mm)		
	1800	4	SE	1.4	4	998			29	86%	36% (0.3 mm)		
28-06-24	0001	12	SE	1.3	4	999	29	27	29	91%	70% (1.5 mm)		
	0600	25	ESE	1.6	4	998			28	92%	75% (1.3 mm)		
	1200	22	SSE	2.1	4	998			29	87%	56% (0.4 mm)		
	1800	24	SE	2.1	4	996			29	86%	36% (0.3 mm)		

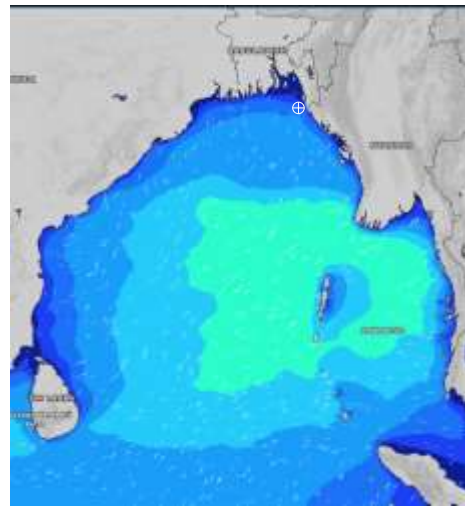
25 June 24 Tue (Probability 70%)



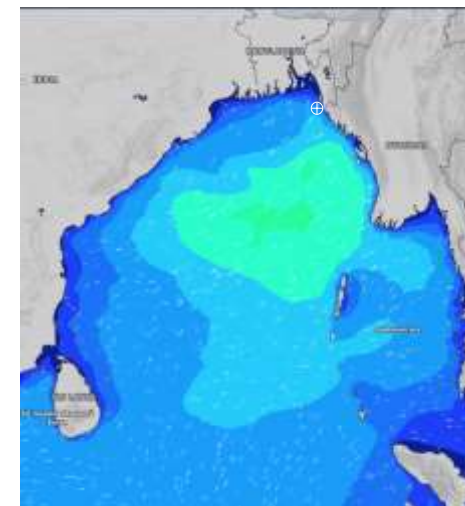
26 June 24 Wed (Probability 60%)



27 June 24 Thu (Probability 50%)



28 June 24 Fri (Probability 50%)



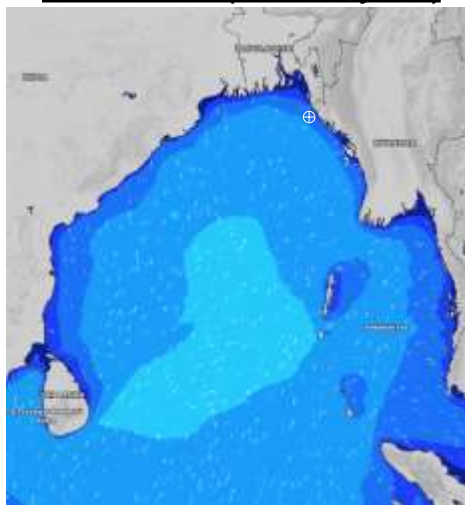
Significant wave height (m)

MARINE WEATHER FORECAST- 15 NM WEST OF ST. MARTIN'S LIGHT HOUSE (Lat 20° 37' N, Long 092° 03' E)

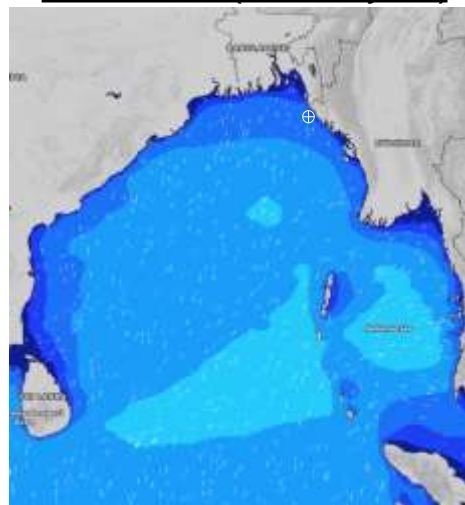
DATE : 21 to 28 June 2024

Date	Time	Max Wind Spd (kts)	Wind Direction	Wave Ht (m)	Sea State	Baro Pressure	Air Temp		Sea Surface Temp	Humidity (%)	Prob of Rain(%)	Sea State	Wave Ht (m)
							Max	Min					
21-06-24	0001	6	SSE	1.8	4	1004	28	26	29	92%	80% (2.6 mm)	0	0
	0600	8	S	1.8	4	1003			29	95%	69% (2.7 mm)	1	0 - 0.1
	1200	9	SSE	1.8	4	1004			29	91%	81% (0.9 mm)	2	0.1 - 0.5
	1800	11	SSW	1.7	4	1001			29	92%	59% (0.9 mm)	3	0.5 - 1.25
22-06-24	0001	11	S	1.7	4	1003	29	26	29	92%	57% (0.4 mm)	4	1.25 - 2.5
	0600	9	SSE	1.6	4	1002			28	93%	43% (0.4 mm)	5	2.5 - 4.0
	1200	10	SSE	1.6	4	1003			29	88%	60% (0.6 mm)	6	4.0 - 6.0
	1800	10	SSW	1.6	4	1001			29	90%	33% (0.2 mm)	7	6.0 - 9.0
23-06-24	0001	9	S	1.6	4	1004	30	26	29	91%	63% (0.6 mm)	8	9.0 - 14.0
	0600	7	SSW	1.6	4	1003			29	93%	58% (0.5 mm)	9	Over 14.0
	1200	7	SSW	1.6	4	1004			29	86%	49% (0.4 mm)		
	1800	8	SW	1.6	4	1001			29	87%	38% (0.2 mm)		
24-06-24	0001	8	SSW	1.6	4	1003	30	27	29	91%	63% (0.6 mm)		
	0600	6	WSW	1.5	4	1002			29	93%	58% (0.5 mm)		
	1200	4	SSW	1.4	4	1003			29	86%	49% (0.4 mm)		
	1800	6	WSW	1.4	4	1001			29	87%	38% (0.2 mm)		

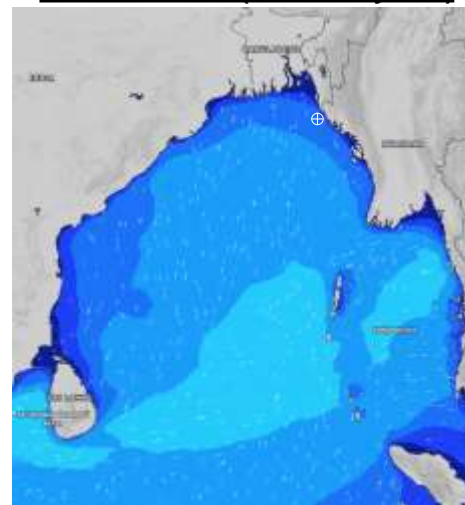
21 June 24 Fri (Probability 98%)



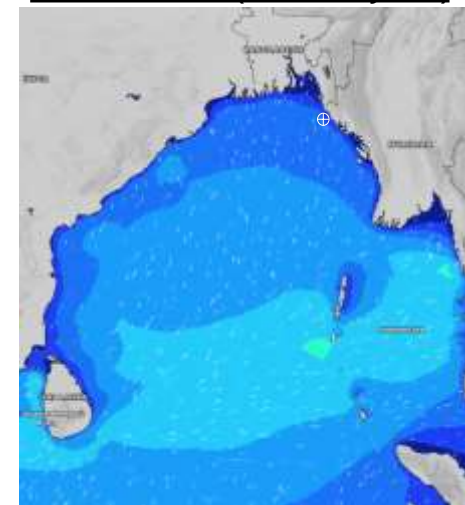
22 June 24 Sat (Probability 95%)



23 June 24 Sun (Probability 90%)



24 June 24 Mon (Probability 80%)



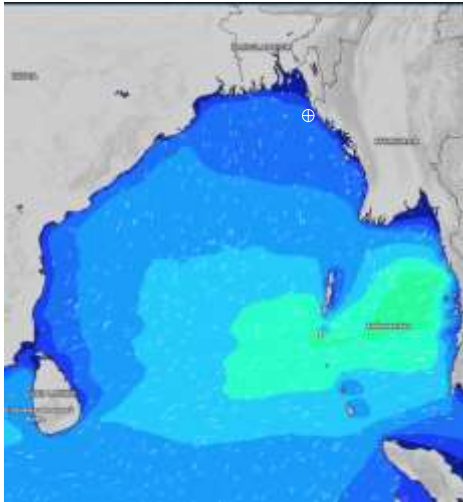
Significant wave height (m)

MARINE WEATHER FORECAST- 15 NM WEST OF ST. MARTIN'S LIGHT HOUSE (Lat 20° 37' N, Long 092° 03' E)

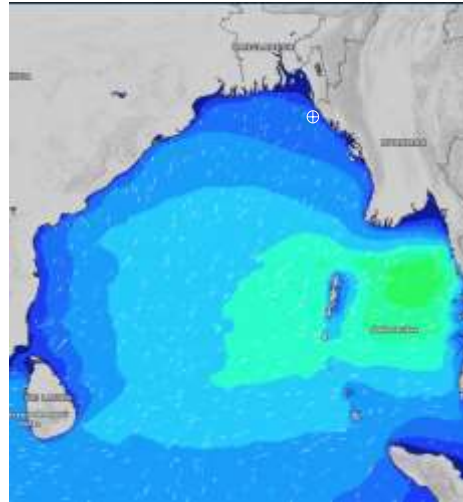
DATE : 21 to 28 June 2024

Date	Time	Max Wind Spd (kts)	Wind Direction	Wave Ht (m)	Sea State	Baro Pressure	Air Temp		Sea Surface Temp	Humidity (%)	Prob of Rain (%)	Sea State	Wave Ht (m)
							Max	Min					
25-06-24	0001	8	S	1.5	4	1003	30	27	29	91%	76% (1.2 mm)	0	0
	0600	6	S	1.5	4	1001			28	94%	83% (1.4 mm)	1	0 - 0.1
	1200	5	SSE	1.4	4	1002			28	92%	82% (2.7 mm)	2	0.1 - 0.5
	1800	4	S	1.4	4	999			29	90%	53% (0.5 mm)	3	0.5 - 1.25
26-06-24	0001	5	S	1.4	4	1001	29	26	29	92%	77% (0.8 mm)	4	1.25 - 2.5
	0600	6	SSE	1.4	4	999			28	94%	92% (1.2 mm)	5	2.5 - 4.0
	1200	8	SE	1.5	4	1001			28	93%	60% (0.7 mm)	6	4.0 - 6.0
	1800	7	SSE	1.6	4	998			29	92%	60% (0.9 mm)	7	6.0 - 9.0
27-06-24	0001	3	SSE	1.7	4	1000	30	26	28	92%	69% (0.8 mm)	8	9.0 - 14.0
	0600	3	ESE	1.8	4	999			28	93%	78% (1.2 mm)	9	Over 14.0
	1200	5	ESE	1.8	4	1000			28	94%	60% (0.7 mm)		
	1800	6	ESE	1.8	4	997			28	91%	60% (0.9 mm)		
28-06-24	0001	10	SSE	1.9	4	999	29	27	29	92%	69% (0.8 mm)		
	0600	20	ESE	2.4	4	997			28	93%	78% (1.2 mm)		
	1200	15	ESE	2.5	4	999			28	94%	60% (0.7 mm)		
	1800	24	ESE	2.8	5	996			28	91%	60% (0.9 mm)		

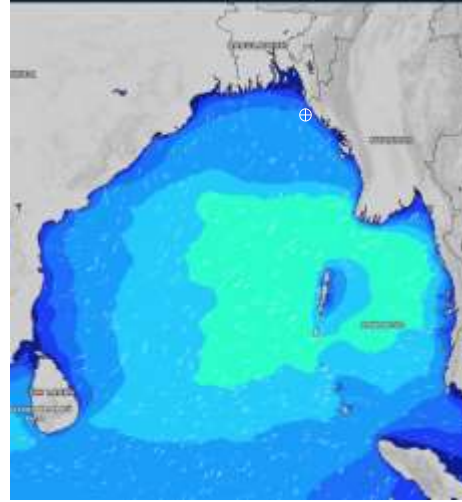
25 June 24 Tue (Probability 70%)



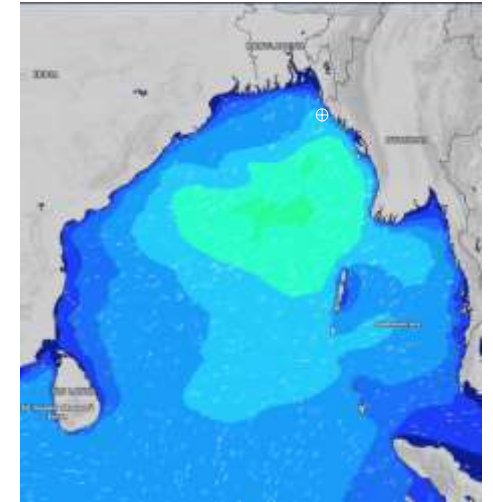
26 June 24 Wed (Probability 60%)



27 June 24 Thu (Probability 50%)



28 June 24 Fri (Probability 50%)



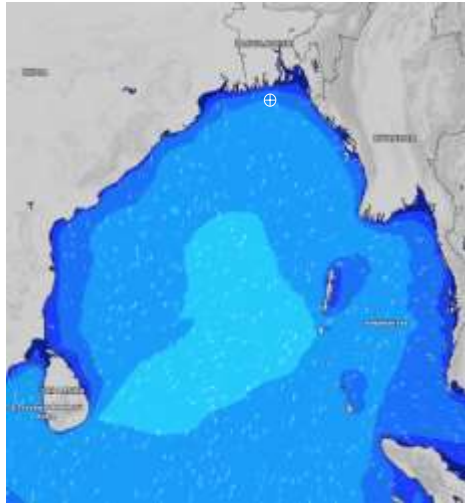
Significant wave height (m)

MARINE WEATHER FORECAST- 40 NM ESE OF PAYRA FAIRWAY (Lat 21° 07'N, Long 090° 45' E)

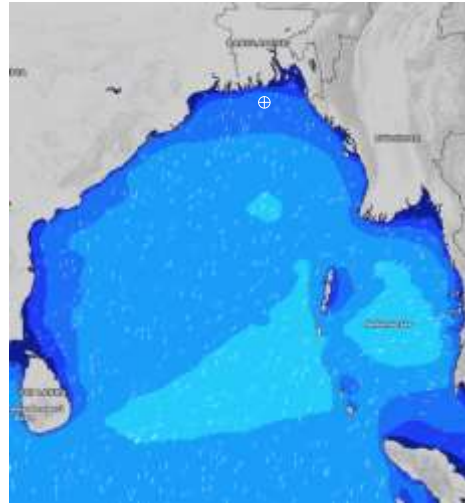
DATE : 21 to 28 June 2024

Date	Time	Max Wind Spd (kts)	Wind Direction	Wave Ht (m)	Sea State	Baro Pressure	Air Temp		Sea Surface Temp	Humidity (%)	Prob of Rain (%)	Sea State	Wave Ht (m)
							Max	Min					
21-06-24	0001	15	SSW	1.9	4	1002	29	27	29	90%	24% (0.1 mm)	0	0
	0600	12	S	1.9	4	1002			29	91%	24% (0.1 mm)	1	0 - 0.1
	1200	16	S	1.9	4	1002			29	90%	23% (0.0 mm)	2	0.1 - 0.5
	1800	14	S	1.8	4	1000			29	89%	32% (0.2 mm)	3	0.5 - 1.25
22-06-24	0001	11	S	1.7	4	1002	30	28	29	90%	38% (0.2 mm)	4	1.25 - 2.5
	0600	10	S	1.6	4	1001			29	91%	73% (0.9 mm)	5	2.5 - 4.0
	1200	9	S	1.7	4	1002			29	85%	39% (0.3 mm)	6	4.0 - 6.0
	1800	12	S	1.7	4	1001			30	86%	18% (0.0 mm)	7	6.0 - 9.0
23-06-24	0001	12	SSW	1.6	4	1003	30	28	29	88%	24% (0.1 mm)	8	9.0 - 14.0
	0600	9	SSW	1.7	4	1003			29	90%	50% (0.4 mm)	9	Over 14.0
	1200	9	SSW	1.7	4	1003			29	85%	24% (0.1 mm)		
	1800	11	SSW	1.7	4	1001			29	85%	23% (0.0 mm)		
24-06-24	0001	11	SSW	1.6	4	1002	31	28	29	88%	35% (0.2 mm)		
	0600	11	SW	1.6	4	1002			29	90%	47% (0.3 mm)		
	1200	10	SSW	1.5	4	1002			29	86%	55% (0.5 mm)		
	1800	9	SSW	1.5	4	1000			29	88%	23% (0.0 mm)		

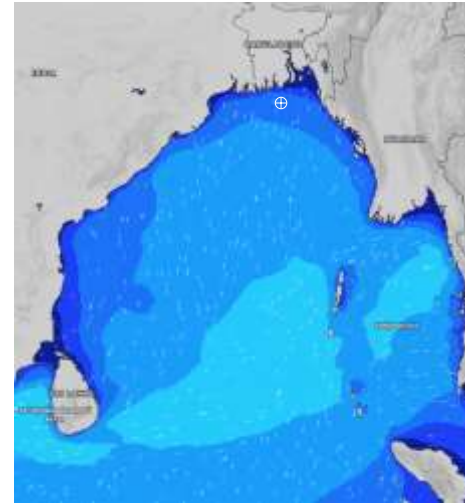
21 June 24 Fri (Probability 98%)



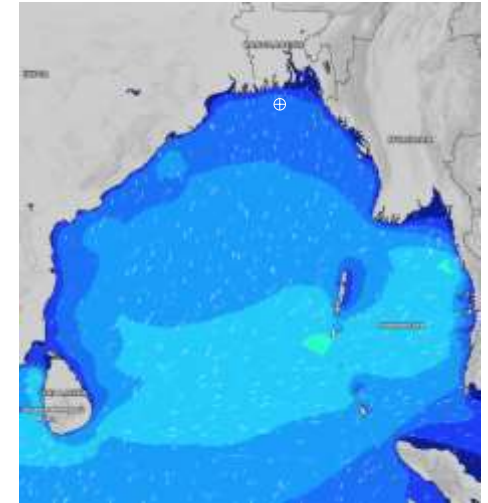
22 June 24 Sat (Probability 95%)



23 June 24 Sun (Probability 90%)



24 June 24 Mon (Probability 80%)



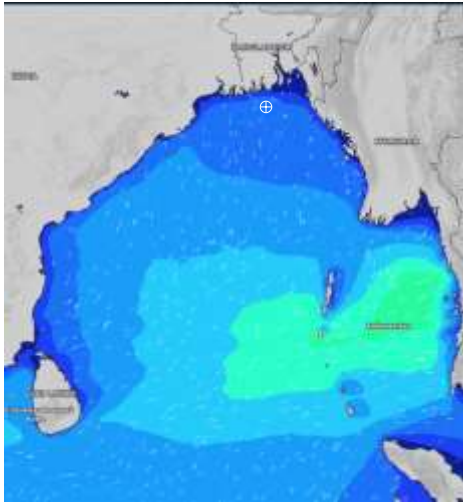
Significant wave height (m)

MARINE WEATHER FORECAST- 40 NM ESE OF PAYRA FAIRWAY (Lat 21° 07'N, Long 090° 45' E)

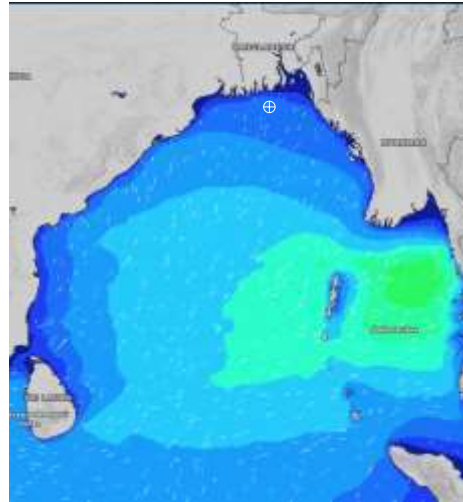
DATE : 21 to 28 June 2024

Date	Time	Max Wind Spd (kts)	Wind Direction	Wave Ht (m)	Sea Stae	Baro Pressure	Air Temp		Sea Surface Temp	Humidity (%)	Prob of Rain (%)	Sea State	Wave Ht (m)
							Max	Min					
25-06-24	0001	12	S	1.5	4	1001	31	28	29	89%	50% (0.5 mm)	0	0
	0600	9	SSE	1.5	4	1001			28	89%	32% (0.2 mm)	1	0 - 0.1
	1200	7	SSE	1.5	4	1001			29	88%	44% (0.4 mm)	2	0.1 - 0.5
	1800	8	S	1.4	4	999			29	87%	43% (0.4 mm)	3	0.5 - 1.25
26-06-24	0001	14	S	1.4	4	1000	31	28	29	89%	44% (0.4 mm)	4	1.25 - 2.5
	0600	6	SSE	1.5	4	999			28	89%	43% (0.4 mm)	5	2.5 - 4.0
	1200	10	SE	1.6	4	1000			29	88%	49% (0.5 mm)	6	4.0 - 6.0
	1800	7	SE	1.6	4	998			29	87%	24% (0.1 mm)	7	6.0 - 9.0
27-06-24	0001	8	SE	1.7	4	1000	30	28	29	89%	34% (0.2 mm)	8	9.0 - 14.0
	0600	9	E	1.8	4	1000			28	89%	32% (0.2 mm)	9	Over 14.0
	1200	9	ESE	1.8	4	999			29	88%	36% (0.2 mm)		
	1800	8	E	1.8	4	998			29	87%	24% (0.1 mm)		
28-06-24	0001	12	SE	1.8	4	998	30	28	29	89%	34% (0.2 mm)		
	0600	19	E	2.2	4	998			28	89%	44% (0.4 mm)		
	1200	18	ESE	2.3	4	997			29	88%	43% (0.4 mm)		
	1800	12	E	2.3	4	995			29	87%	24% (0.1 mm)		

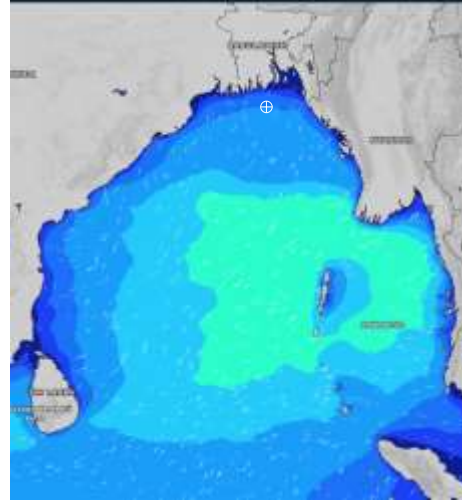
25 June 24 Tue (Probability 70%)



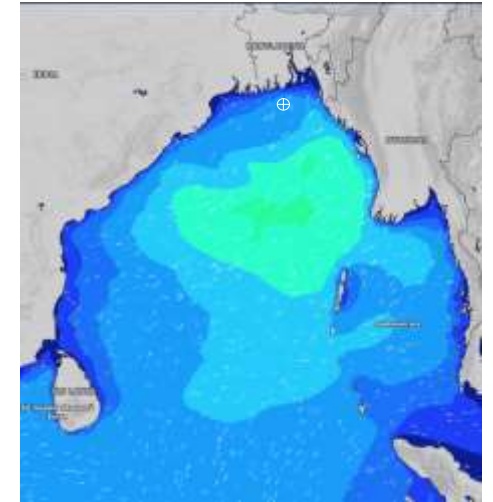
26 June 24 Wed (Probability 60%)



27 June 24 Thu (Probability 50%)



28 June 24 Fri (Probability 50%)



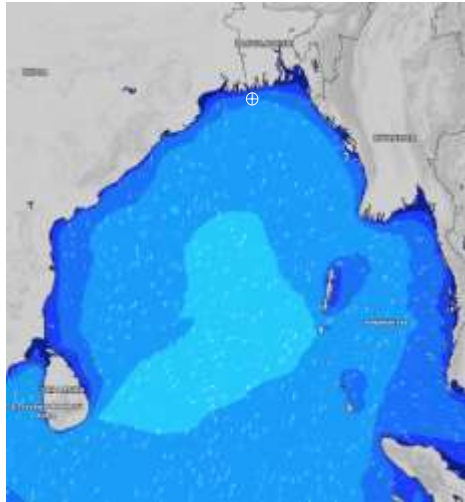
Significant wave height (m)

MARINE WEATHER FORECAST- 10 NM SOUTH OF MONGLA FAIRWAY (Lat 21° 16' N, Long 089° 34' E)

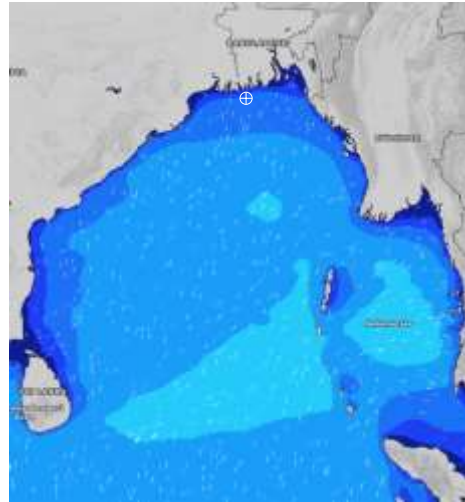
DATE : 21 to 28 June 2024

Date	Time	Max Wind Spd (kts)	Wind Direction	Wave Ht (m)	Sea State	Baro Pressure	Air Temp		Sea Surface Temp	Humidity (%)	Prob of Rain (%)	Sea State	Wave Ht (m)
							Max	Min					
21-06-24	0001	16	SSW	1.9	4	1001	31	27	29	92%	24% (0.0 mm)	0	0
	0600	11	S	1.9	4	1001			29	92%	15% (0.0 mm)	1	0 - 0.1
	1200	11	SSW	1.8	4	1002			29	84%	18% (0.0 mm)	2	0.1 - 0.5
	1800	12	SSW	1.7	4	999			30	89%	31% (0.2 mm)	3	0.5 - 1.25
22-06-24	0001	10	SSW	1.6	4	1001	31	27	29	94%	31% (0.2 mm)	4	1.25 - 2.5
	0600	11	S	1.6	4	1001			29	94%	49% (0.4 mm)	5	2.5 - 4.0
	1200	9	SSE	1.6	4	1001			30	82%	52% (0.5 mm)	6	4.0 - 6.0
	1800	11	S	1.6	4	999			30	86%	10% (0.0 mm)	7	6.0 - 9.0
23-06-24	0001	13	SSW	1.6	4	1002	32	28	29	91%	22% (0.0 mm)	8	9.0 - 14.0
	0600	13	SSW	1.6	4	1003			29	89%	35% (0.2 mm)	9	Over 14.0
	1200	10	SSW	1.7	4	1002			29	79%	51% (0.4 mm)		
	1800	12	SSW	1.7	4	1000			29	83%	24% (0.1 mm)		
24-06-24	0001	15	SSW	1.6	4	1002	33	28	29	91%	22% (0.0 mm)		
	0600	14	SSW	1.6	4	1002			29	93%	35% (0.2 mm)		
	1200	12	SSW	1.6	4	1001			29	80%	51% (0.4 mm)		
	1800	12	S	1.5	4	1000			29	82%	24% (0.1 mm)		

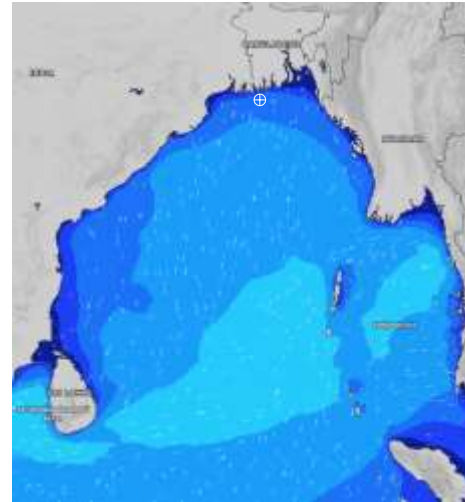
21 June 24 Fri (Probability 98%)



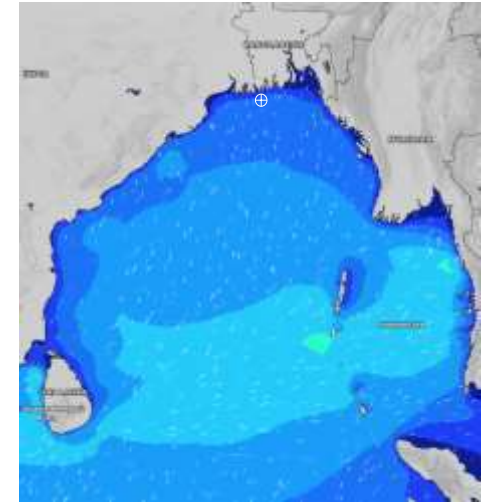
22 June 24 Sat (Probability 95%)



23 June 24 Sun (Probability 90%)



24 June 24 Mon (Probability 80%)



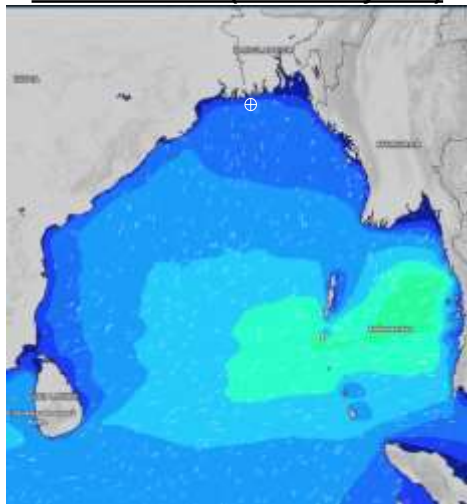
Significant wave height (m)

MARINE WEATHER FORECAST- 10 NM SOUTH OF MONGLA FAIRWAY (Lat 21° 16' N, Long 089° 34' E)

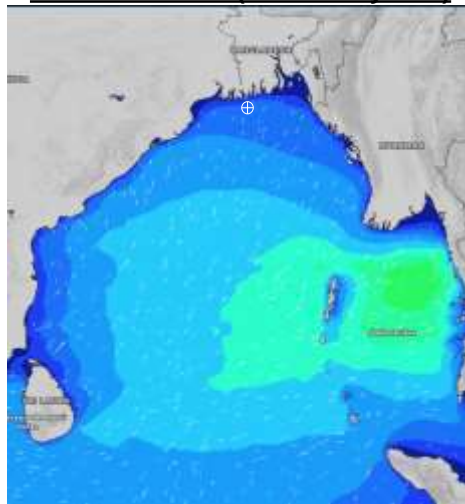
DATE : 21 to 28 June 2024

Date	Time	Max Wind Spd (kts)	Wind Direction	Wave Ht (m)	Sea State	Baro Pressure	Air Temp		Sea Surface Temp	Humidity (%)	Prob of Rain (%)	Sea State	Wave Ht (m)
							Max	Min					
25-06-24	0001	14	S	1.6	4	1001	33	28	29	89%	24% (0.1 mm)	0	0
	0600	12	S	1.5	4	1000			29	90%	24% (0.1 mm)	1	0 - 0.1
	1200	11	S	1.5	4	1000			29	82%	23% (0.0 mm)	2	0.1 - 0.5
	1800	11	SSE	1.5	4	998			29	85%	32% (0.2 mm)	3	0.5 - 1.25
26-06-24	0001	15	SSE	1.4	4	1000	32	28	29	89%	38% (0.2 mm)	4	1.25 - 2.5
	0600	8	SE	1.5	4	998			29	90%	24% (0.1 mm)	5	2.5 - 4.0
	1200	11	ESE	1.6	4	999			29	80%	24% (0.1 mm)	6	4.0 - 6.0
	1800	12	ESE	1.6	4	998			29	85%	23% (0.0 mm)	7	6.0 - 9.0
27-06-24	0001	11	SE	1.7	4	999	31	27	29	89%	56% (0.5 mm)	8	9.0 - 14.0
	0600	10	E	1.7	4	999			29	90%	62% (0.5 mm)	9	Over 14.0
	1200	9	ESE	1.8	4	999			29	80%	46% (0.4 mm)		
	1800	8	ENE	1.7	4	998			29	85%	37% (0.2 mm)		
28-06-24	0001	10	SE	1.7	4	998	31	27	29	89%	56% (0.5 mm)		
	0600	10	E	1.9	4	998			29	90%	62% (0.5 mm)		
	1200	18	ESE	1.9	4	998			29	80%	46% (0.4 mm)		
	1800	14	ENE	2.0	4	995			29	85%	37% (0.2 mm)		

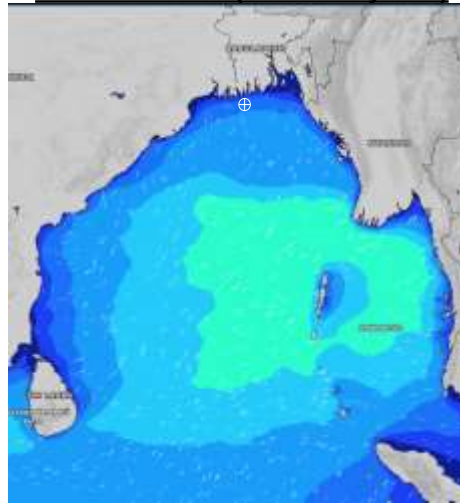
25 June 24 Tue (Probability 70%)



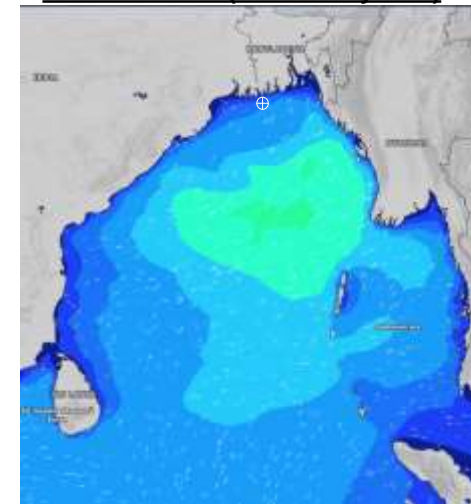
26 June 24 Wed (Probability 60%)



27 June 24 Thu (Probability 50%)



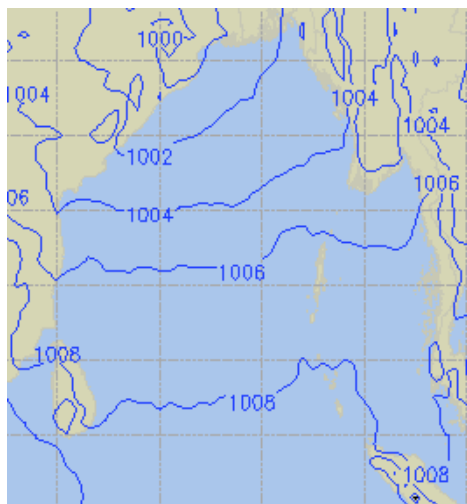
28 June 24 Fri (Probability 50%)



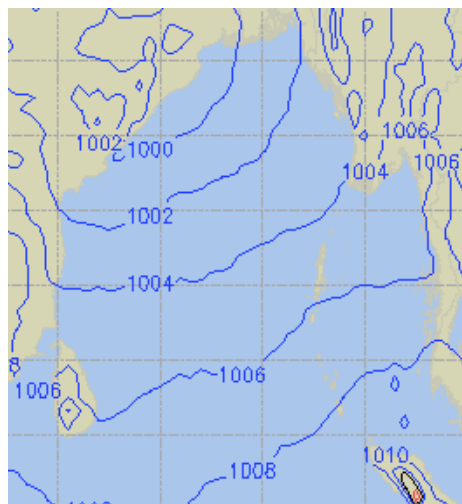
Significant wave height (m)

PREDICTED SURFACE PRESSURE FORECAST (21 to 27 June 2024)

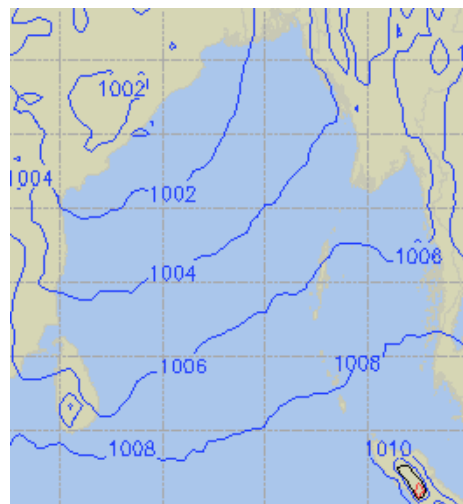
21 June 24 Fri (Probability 98%)



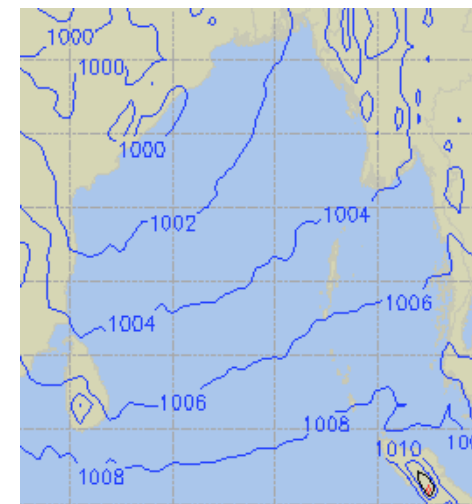
22 June 24 Sat (Probability 95%)



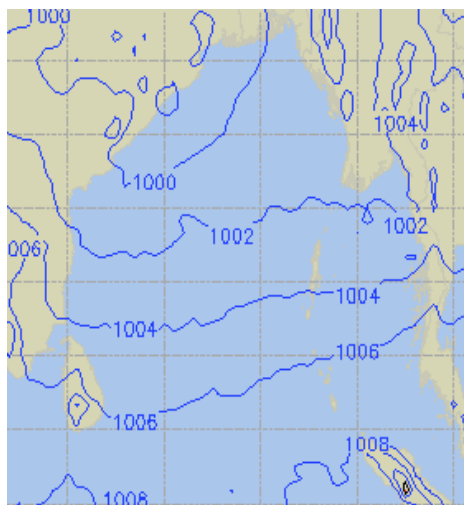
23 June 24 Sun (Probability 90%)



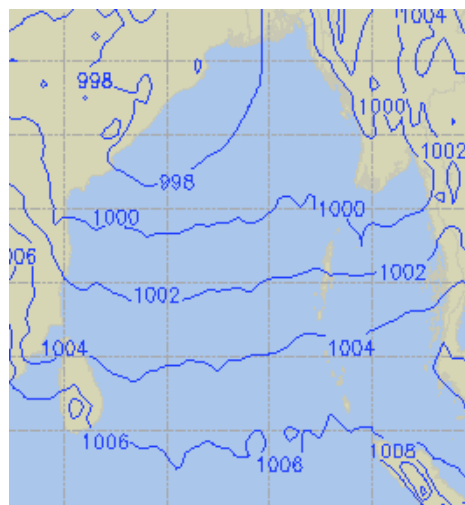
24 June 24 Mon (Probability 80%)



25 June 24 Tue (Probability 70%)



26 June 24 Wed (Probability 60%)



27 June 24 Thu (Probability 50%)

