



SUMMARY OF MARINE WEATHER FORECAST
COASTAL AREA OF BANGLADESH
DATE: 14 to 21 Dec 2025



Fleet Forecast	Seasonal low lies over South Bay of Bengal, extending its trough to Northeast Bay of Bengal.
Wind Direction, Speed	North/ North-easterly, 08-12 kts
Wave Height & Sea State	Ctg Outer Anchorage: 0.1 to 0.2 m (Sea state: 1 to 2) Abeam to Cox's Bazar: 0.4 to 0.6 m (Sea state: 2 to 3) St. Martin's Island: 0.5 to 0.7 m (Sea state: 3) Payra Fairway Buoy: 0.4 to 0.6 m (Sea state: 2 to 3) Mongla Fairway Buoy: 0.4 to 0.6 m (Sea state: 2 to 3) Outer EEZ: 0.5 to 0.9 m (Sea state: 3)
Sea Surface Temperature	20° C - 25° C
Baro Pressure	1011-1017 mb
Rainfall	Weather may remain dry with temporary partly cloudy sky over Bay of Bengal
Visibility	Visibility: 3.0– 5.0 km (Light fog may occur over coastal area during early morning)

Marine Weather Outlook (14 to 21 Dec 2025):

- Weather may remain dry with temporary partly cloudy sky over Bay of Bengal.
- Seasonal low lies over South Bay of Bengal, extending its trough to Northeast Bay of Bengal.



MARINE WEATHER FORECAST (14 to 21 Dec 2025) PATENGA POINT (22° 12' N, 091° 38' E)

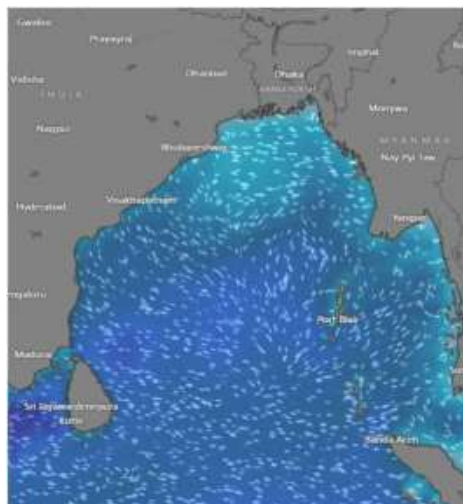


Date	Time	Air Temp (°C)		Sea Surface Temp (°C)	Baro Pressure (mbar)	Wind Direction	Wind Spd (kts)		Wave Ht (m)	Sea State	Humidity (%)	Prob of Rain (%)	Amount of Rain (mm)
		Max	Min				Gusting	Avg					
14-12-25 (Sunday)	0001	28	18	24	1015	NNW	09	05	0.1	1	84	05	0.0
	0600			23	1017	NNE	07	04	0.2	2	91	02	0.0
	1200			25	1014	NNW	07	04	0.1	1	53	02	0.0
	1800			24	1013	NNW	07	04	0.1	1	72	03	0.0
15-12-25 (Monday)	0001	27	18	24	1015	NNE	09	05	0.1	1	85	05	0.0
	0600			23	1017	NNE	08	05	0.2	2	91	03	0.0
	1200			25	1014	NW	10	06	0.2	2	54	02	0.0
	1800			24	1013	NNW	07	04	0.1	1	67	04	0.0
16-12-25 (Tuesday)	0001	27	18	24	1014	NNW	08	05	0.2	2	84	05	0.0
	0600			23	1016	NNE	09	05	0.2	2	91	03	0.0
	1200			25	1013	NW	10	06	0.2	2	53	02	0.0
	1800			24	1012	W	07	04	0.1	1	67	03	0.0
17-12-25 (Wednesday)	0001	27	18	24	1013	NNW	11	07	0.2	2	86	05	0.0
	0600			23	1015	NNE	09	05	0.2	2	88	03	0.0
	1200			25	1012	NNW	11	07	0.2	2	52	02	0.0
	1800			24	1011	NW	08	05	0.2	2	68	04	0.0

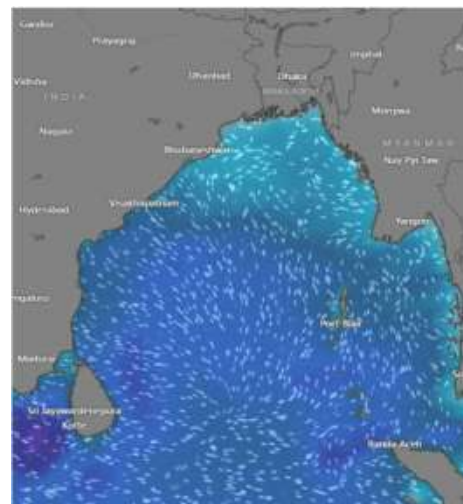
14 Dec 2025



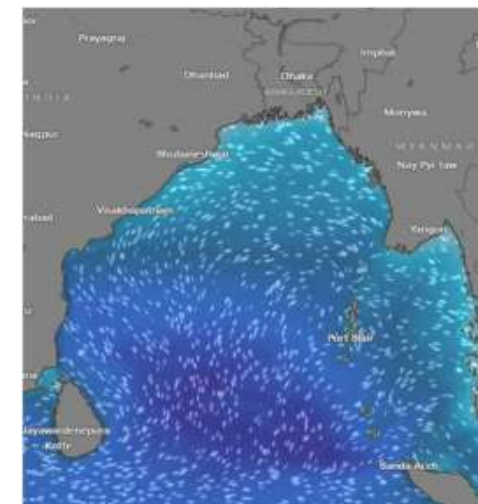
15 Dec 2025



16 Dec 2025



17 Dec 2025



Significant wave height (m)



MARINE WEATHER FORECAST (14 to 21 Dec 2025) PATENGA POINT (22° 12' N, 091° 38' E)



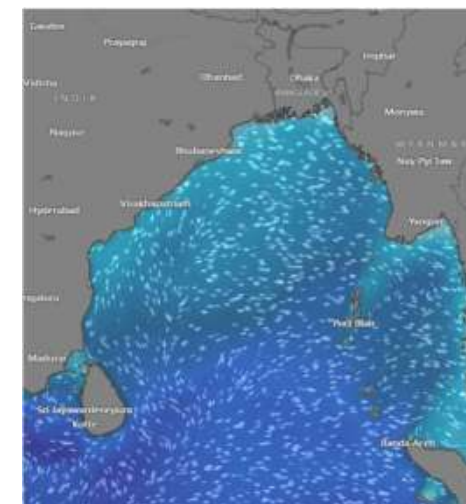
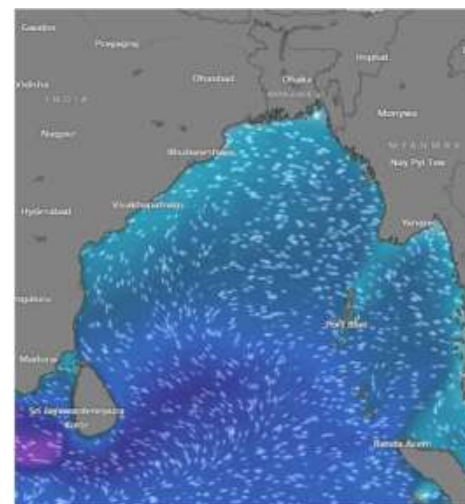
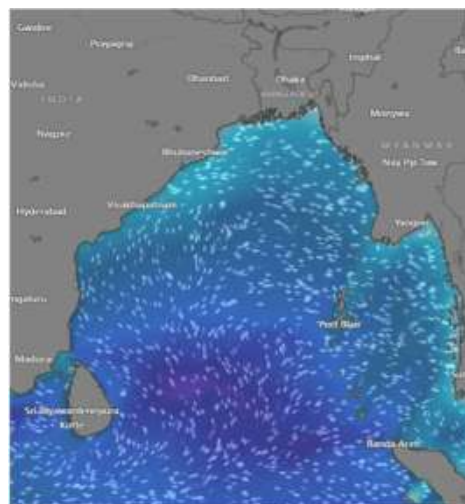
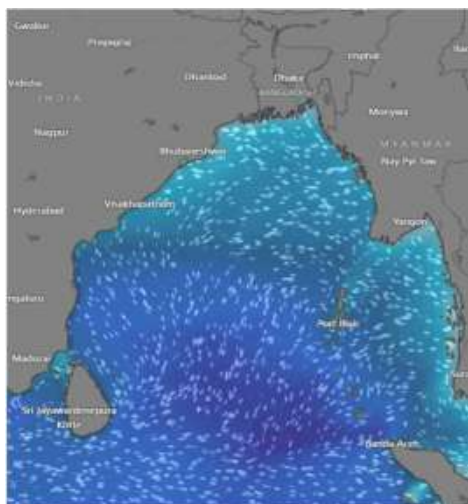
Date	Time	Air Temp (°C)		Sea Surface Temp (°C)	Baro Pressure (mbar)	Wind Direction	Wind Spd (kts)		Wave Ht (m)	Sea State	Humidity (%)	Prob of Rain (%)	Amount of Rain (mm)
		Max	Min				Gusting	Avg					
18-12-25 (Thursday)	0001	27	18	24	1012	NW	10	06	0.2	2	84	06	0.0
	0600			24	1014	NNE	10	05	0.1	1	90	05	0.0
	1200			25	1012	NNW	09	05	0.1	1	56	04	0.0
	1800			23	1012	NNW	11	05	0.1	1	66	03	0.0
19-12-25 (Friday)	0001	27	18	24	1012	NNE	08	04	0.2	2	85	05	0.0
	0600			24	1014	E	07	04	0.1	1	91	04	0.0
	1200			25	1012	W	09	05	0.1	1	54	02	0.0
	1800			23	1012	NW	07	04	0.1	1	67	03	0.0
20-12-25 (Saturday)	0001	27	18	24	1012	NNW	10	05	0.1	1	85	04	0.0
	0600			24	1014	NNE	09	04	0.1	1	90	03	0.0
	1200			25	1012	NW	09	05	0.1	1	56	02	0.0
	1800			23	1012	W	10	06	0.2	2	64	03	0.0
21-12-25 (Sunday)	0001	27	18	24	1012	NNW	07	04	0.1	1	85	04	0.0
	0600			24	1014	NNE	05	03	0.1	1	75	04	0.0
	1200			25	1012	NW	07	04	0.1	1	52	03	0.0
	1800			23	1012	W	08	05	0.2	2	66	03	0.0

18 Dec 2025

19 Dec 2025

20 Dec 2025

21 Dec 2025



Significant wave height (m)



MARINE WEATHER FORECAST (14 to 21 Dec 2025)

ABEAM TO KUTUBDIA (21° 51' N, 091° 40' E)



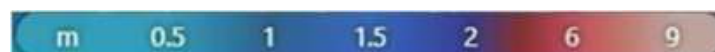
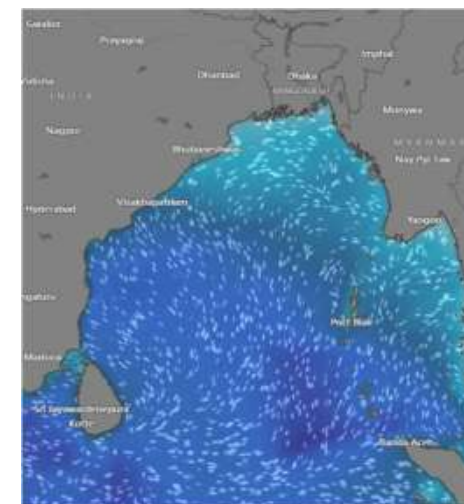
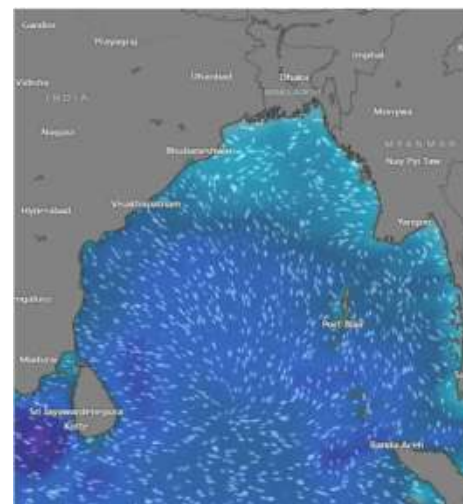
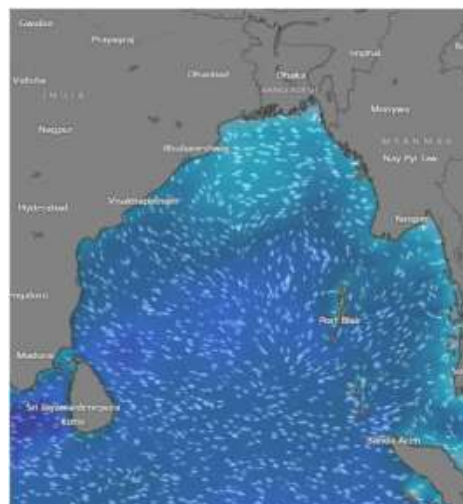
Date	Time	Air Temp (°C)		Sea Surface Temp (°C)	Baro Pressure (mbar)	Wind Direction	Wind Spd (kts)		Wave Ht (m)	Sea State	Humidity (%)	Prob of Rain (%)	Amount of Rain (mm)
		Max	Min				Gusting	Avg					
14-12-25 (Sunday)	0001	28	17	24	1015	NNW	11	07	0.2	2	84	04	0.0
	0600			22	1017	NNE	10	07	0.3	2	91	02	0.0
	1200			24	1014	NNW	11	08	0.2	2	52	03	0.0
	1800			23	1013	NNW	10	07	0.2	2	69	02	0.0
15-12-25 (Monday)	0001	28	17	24	1015	NNW	12	08	0.2	2	84	05	0.0
	0600			22	1017	NNE	13	09	0.3	2	90	04	0.0
	1200			24	1014	NNW	11	07	0.3	2	53	02	0.0
	1800			23	1013	NNW	09	05	0.2	2	67	04	0.0
16-12-25 (Tuesday)	0001	28	17	24	1014	NNW	12	08	0.2	2	85	05	0.0
	0600			22	1016	N	12	08	0.3	2	91	04	0.0
	1200			24	1013	NNW	11	07	0.2	2	52	02	0.0
	1800			23	1012	NW	09	05	0.2	2	67	03	0.0
17-12-25 (Wednesday)	0001	28	17	24	1013	NNW	12	08	0.2	2	85	05	0.0
	0600			22	1015	NNE	10	06	0.3	2	91	03	0.0
	1200			24	1012	NNW	12	09	0.3	2	54	02	0.0
	1800			23	1011	NW	11	08	0.3	2	71	03	0.0

14 Dec 2025

15 Dec 2025

16 Dec 2025

17 Dec 2025



Significant wave height (m)



MARINE WEATHER FORECAST (14 to 21 Dec 2025)

ABEAM TO KUTUBDIA (21° 51' N, 091° 40' E)



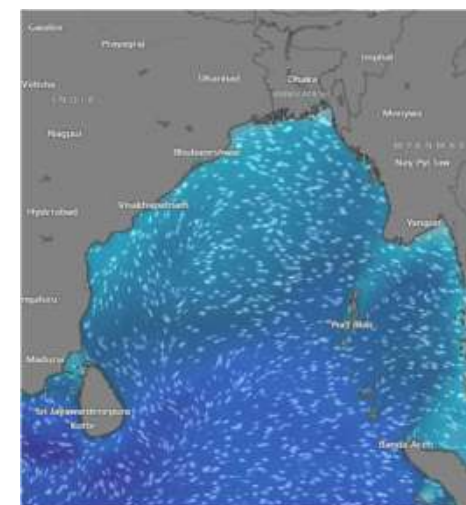
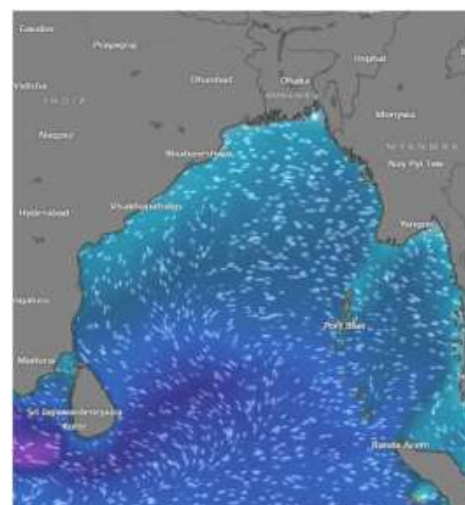
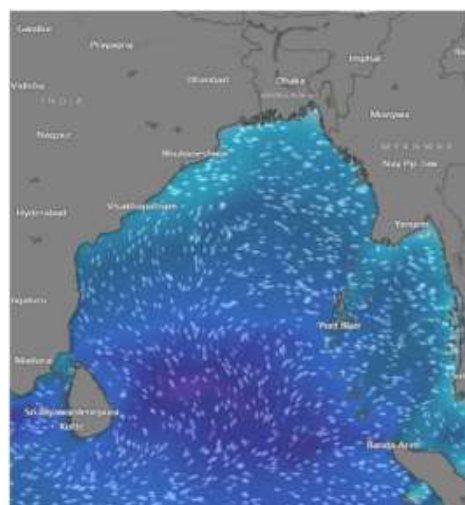
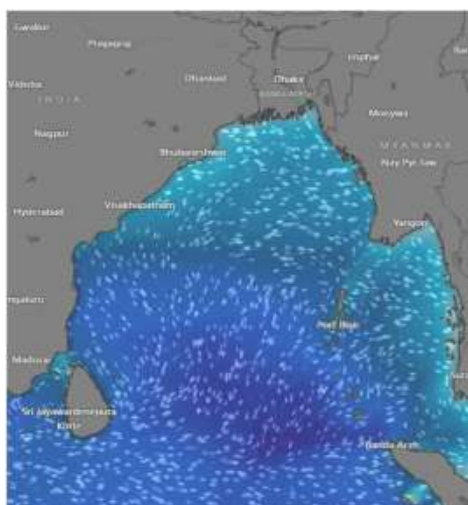
Date	Time	Air Temp (°C)		Sea Surface Temp (°C)	Baro Pressure (mbar)	Wind Direction	Wind Spd (kts)		Wave Ht (m)	Sea State	Humidity (%)	Prob of Rain (%)	Amount of Rain (mm)
		Max	Min				Gusting	Avg					
18-12-25 (Thursday)	0001	28	17	24	1013	NNW	12	09	0.3	2	86	06	0.0
	0600			22	1015	NNE	12	06	0.2	2	90	04	0.0
	1200			24	1012	NNW	10	07	0.2	2	65	05	0.0
	1800			23	1011	NW	10	05	0.2	2	70	04	0.0
19-12-25 (Friday)	0001	28	17	24	1013	NNW	06	03	0.3	2	85	06	0.0
	0600			22	1015	NNE	08	05	0.2	2	90	04	0.0
	1200			24	1012	NNW	09	05	0.2	2	54	02	0.0
	1800			23	1011	NW	10	06	0.2	2	72	03	0.0
20-12-25 (Saturday)	0001	28	17	24	1013	NNW	10	06	0.3	2	84	06	0.0
	0600			22	1015	NNW	11	07	0.3	2	90	04	0.0
	1200			24	1012	N	10	06	0.2	2	54	02	0.0
	1800			23	1011	NW	09	05	0.2	2	73	03	0.0
21-12-25 (Sunday)	0001	28	17	24	1013	NNW	08	04	0.3	2	84	06	0.0
	0600			22	1015	NNW	08	04	0.3	2	90	04	0.0
	1200			24	1012	N	10	06	0.2	2	54	02	0.0
	1800			23	1011	NW	13	06	0.2	2	71	04	0.0

18 Dec 2025

19 Dec 2025

20 Dec 2025

21 Dec 2025



Significant wave height (m)



MARINE WEATHER FORECAST (14 to 21 Dec 2025) ABEAM TO ELEPHANT POINT (21° 11' N, 091° 52' E)



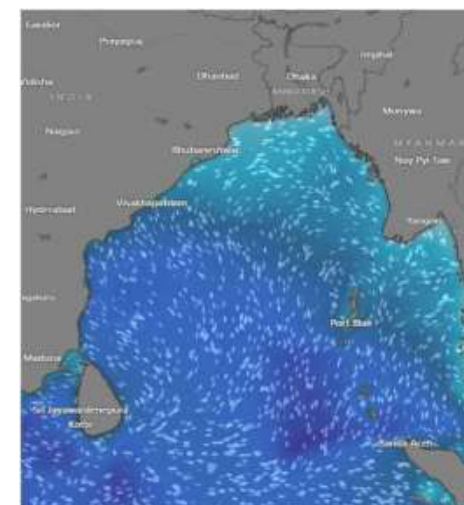
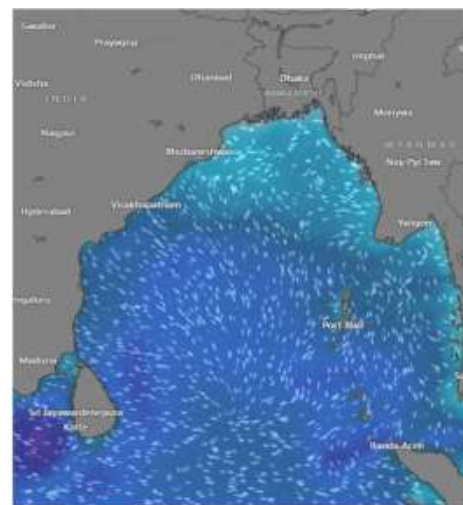
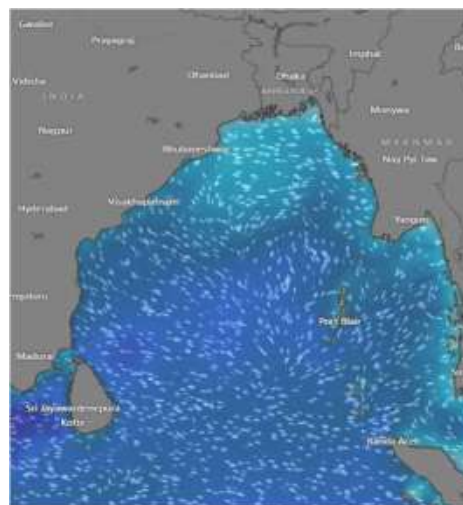
Date	Time	Air Temp (°C)		Sea Surface Temp (°C)	Baro Pressure (mbar)	Wind Direction	Wind Spd (kts)		Wave Ht (m)	Sea State	Humidity (%)	Prob of Rain (%)	Amount of Rain (mm)
		Max	Min				Gusting	Avg					
14-12-25 (Sunday)	0001	28	17	23	1015	NNE	12	08	0.4	2	84	05	0.0
	0600			22	1017	NNE	13	11	0.6	3	91	04	0.0
	1200			24	1014	NNW	11	09	0.5	3	53	02	0.0
	1800			23	1013	NNW	12	10	0.5	3	69	03	0.0
15-12-25 (Monday)	0001	28	17	23	1015	NNE	13	07	0.5	3	84	05	0.0
	0600			22	1017	NNE	14	10	0.5	3	90	04	0.0
	1200			24	1014	NNW	13	09	0.5	3	52	02	0.0
	1800			23	1013	NNW	14	10	0.5	3	68	03	0.0
16-12-25 (Tuesday)	0001	28	17	23	1014	NNW	13	09	0.4	2	84	04	0.0
	0600			22	1016	NNW	12	08	0.5	3	91	03	0.0
	1200			24	1013	NNW	13	09	0.5	3	52	02	0.0
	1800			23	1012	NNW	12	08	0.5	3	68	03	0.0
17-12-25 (Wednesday)	0001	28	17	23	1013	NNW	12	08	0.5	3	85	05	0.0
	0600			22	1015	N	13	09	0.5	3	91	03	0.0
	1200			24	1013	NNW	13	10	0.6	3	52	02	0.0
	1800			23	1012	NNW	12	09	0.6	3	66	03	0.0

14 Dec 2025

15 Dec 2025

16 Dec 2025

17 Dec 2025



Significant wave height (m)

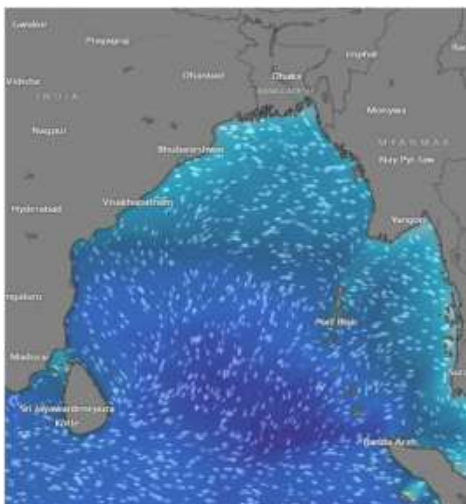


MARINE WEATHER FORECAST (14 to 21 Dec 2025) ABEAM TO ELEPHANT POINT (21° 11' N, 091° 52' E)



Date	Time	Air Temp (°C)		Sea Surface Temp (°C)	Baro Pressure (mbar)	Win Direction	Wind Spd (kts)		Wave Ht (m)	Sea State	Humidity (%)	Prob of Rain (%)	Amount of Rain (mm)
		Max	Min				Gusting	Avg					
18-12-25 (Thursday)	0001	28	17	23	1013	NNW	13	09	0.5	3	84	05	0.0
	0600			22	1015	N	11	07	0.6	3	90	04	0.0
	1200			24	1013	NNW	12	08	0.7	3	65	04	0.0
	1800			23	1012	NNW	11	08	0.7	3	69	03	0.0
19-12-25 (Friday)	0001	28	17	23	1013	NNW	09	05	0.6	3	85	05	0.0
	0600			22	1015	NNE	07	04	0.6	3	90	04	0.0
	1200			24	1013	NNW	09	05	0.6	3	56	03	0.0
	1800			23	1012	NW	10	06	0.6	3	67	04	0.0
20-12-25 (Saturday)	0001	28	17	23	1013	NNW	10	06	0.6	3	85	05	0.0
	0600			22	1015	N	11	07	0.6	3	91	04	0.0
	1200			24	1013	NNW	09	06	0.6	3	55	02	0.0
	1800			23	1012	NW	11	08	0.6	3	69	03	0.0
21-12-25 (Sunday)	0001	28	17	23	1013	NNW	09	04	0.6	3	85	05	0.0
	0600			22	1015	N	08	04	0.6	3	91	04	0.0
	1200			24	1013	NNW	09	05	0.6	3	58	03	0.0
	1800			23	1012	NW	12	09	0.6	3	72	03	0.0

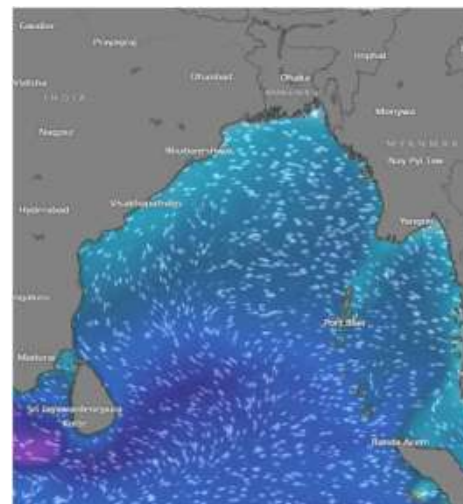
18 Dec 2025



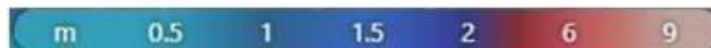
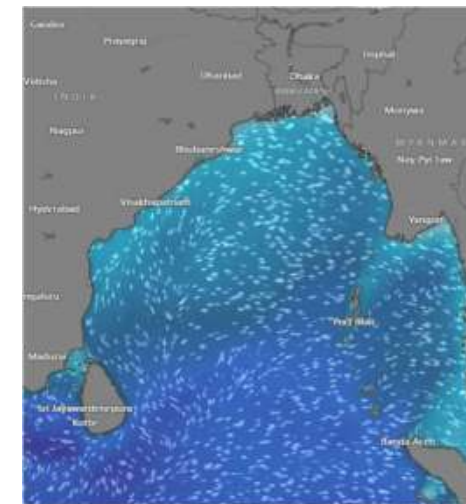
19 Dec 2025



20 Dec 2025



21 Dec 2025



Significant wave height (m)



MARINE WEATHER FORECAST (14 to 21 Dec 2025)

ABEAM TO ST. MARTIN'S LIGHT HOUSE (20° 37' N, 092° 08' E)



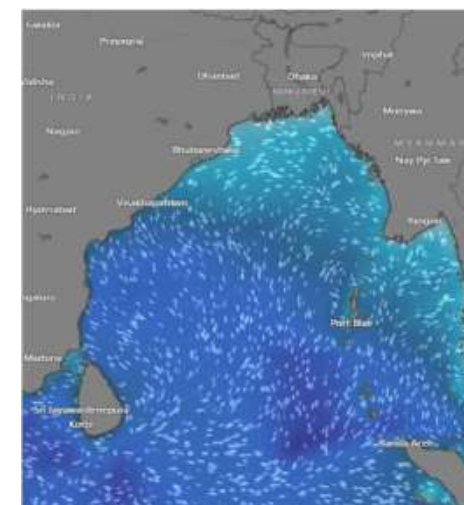
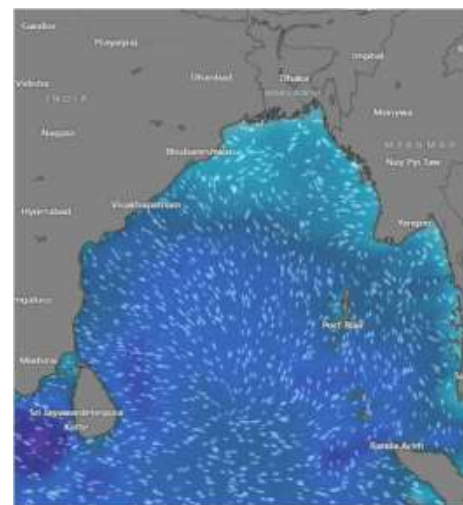
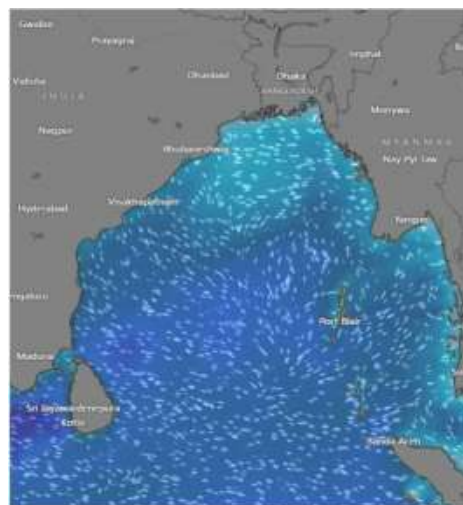
Date	Time	AirTemp (°C)		Sea Surface Temp (°C)	Baro Pressure (mbar)	Wind Direction	Wind Spd (kts)		Wave Ht (m)	Sea State	Humidity (%)	Prob of Rain (%)	Amount of Rain (mm)
		Max	Min				Gusting	Avg					
14-12-25 (Sunday)	0001	28	17	23	1015	NNW	11	08	0.5	3	84	04	0.0
	0600			22	1017	N	13	09	0.6	3	91	03	0.0
	1200			24	1014	N	08	05	0.5	3	54	02	0.0
	1800			23	1013	NNW	13	09	0.6	3	69	03	0.0
15-12-25 (Monday)	0001	28	17	23	1015	NNW	14	10	0.6	3	85	05	0.0
	0600			22	1017	NNE	13	09	0.6	3	91	04	0.0
	1200			24	1014	NNW	11	07	0.5	3	54	02	0.0
	1800			23	1013	NNW	14	10	0.5	3	67	03	0.0
16-12-25 (Tuesday)	0001	28	17	23	1014	NNW	13	10	0.6	3	84	04	0.0
	0600			22	1016	N	12	09	0.6	3	90	03	0.0
	1200			24	1013	NNW	12	08	0.5	3	52	02	0.0
	1800			23	1012	NNW	11	07	0.5	3	66	03	0.0
17-12-25 (Wednesday)	0001	28	17	23	1013	NNW	12	09	0.5	3	85	05	0.0
	0600			22	1014	N	13	10	0.6	3	91	03	0.0
	1200			24	1012	NNW	14	11	0.6	3	53	02	0.0
	1800			23	1011	NNW	13	10	0.6	3	68	03	0.0

14 Dec 2025

15 Dec 2025

16 Dec 2025

17 Dec 2025



Significant wave height (m)



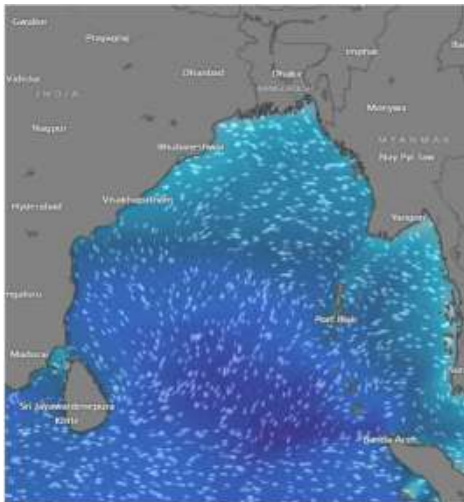
MARINE WEATHER FORECAST (14 to 21 Dec 2025)

ABEAM TO ST. MARTIN'S LIGHT HOUSE (20° 37' N, 092° 08' E)

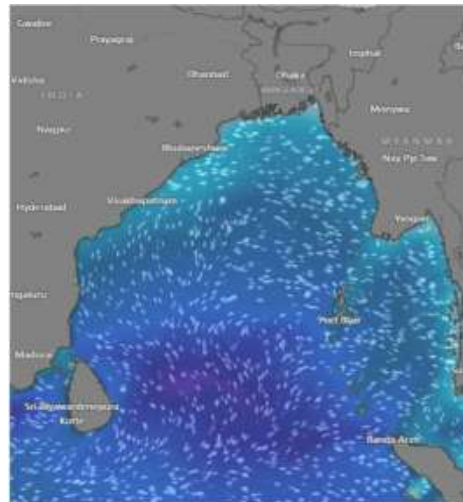


Date	Time	Air Temp (°C)		Sea Surface Temp (°C)	Baro Pressure (mbar)	Wind Direction	Wind Spd (kts)		Wave Ht (m)	Sea State	Humidity (%)	Prob of Rain (%)	Amount of Rain (mm)
		Max	Min				Gusting	Avg					
18-12-25 (Thursday)	0001	28	17	23	1013	NW	16	11	0.7	3	86	05	0.0
	0600			22	1014	NE	14	07	0.7	3	91	03	0.0
	1200			24	1012	NW	14	06	0.6	3	65	02	0.0
	1800			23	1011	NNW	12	08	0.6	3	72	03	0.0
19-12-25 (Friday)	0001	28	17	23	1013	NNW	11	07	0.7	3	85	05	0.0
	0600			22	1014	NNE	09	05	0.7	3	90	04	0.0
	1200			24	1012	NW	07	04	0.7	3	54	02	0.0
	1800			23	1011	NW	11	07	0.7	3	71	03	0.0
20-12-25 (Saturday)	0001	28	17	23	1013	NNW	09	05	0.7	3	84	06	0.0
	0600			22	1014	N	09	04	0.7	3	90	04	0.0
	1200			24	1012	NVW	07	03	0.7	3	52	02	0.0
	1800			23	1011	NW	10	06	0.7	3	73	03	0.0
21-12-25 (Sunday)	0001	28	17	23	1013	NNW	11	07	0.7	3	84	06	0.0
	0600			22	1014	N	11	05	0.7	3	90	04	0.0
	1200			24	1012	NVW	08	05	0.7	3	52	02	0.0
	1800			23	1011	NW	13	10	0.7	3	73	03	0.0

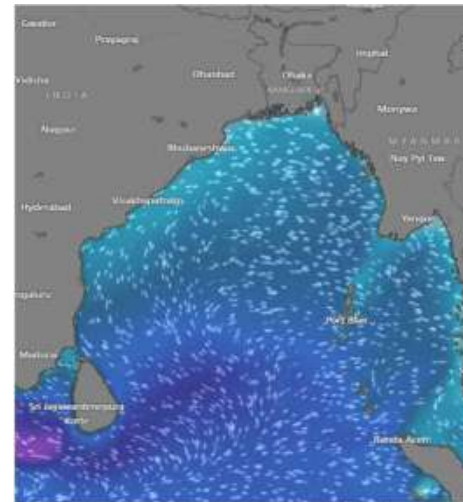
18 Dec 2025



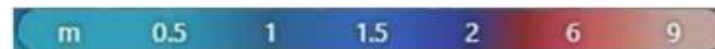
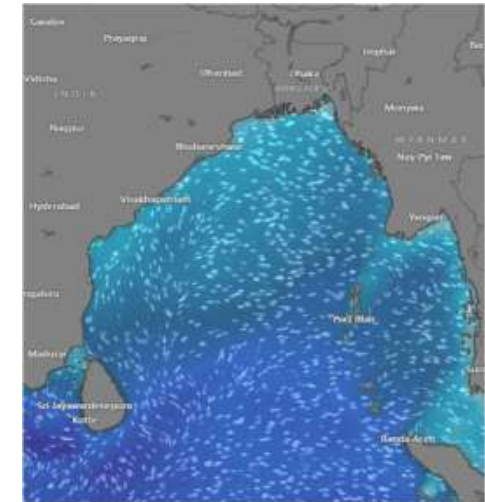
19 Dec 2025



20 Dec 2025



21 Dec 2025



Significant wave height (m)



MARINE WEATHER FORECAST (14 to 21 Dec 2025)

PAYRA FAIRWAY (21° 22' N, 090° 6' E)

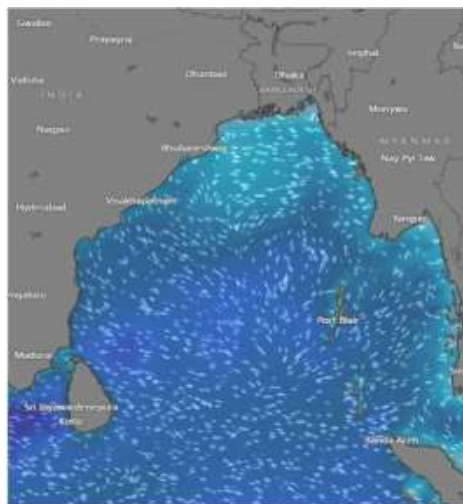


Date	Time	Air Temp (°C)		Sea Surface Temp (°C)	Baro Pressure (mbar)	Wind Direction	Wind Spd (kts)		Wave Ht (m)	Sea State	Humidity (%)	Prob of Rain (%)	Amount of Rain (mm)
		Max	Min				Gusting	Avg					
14-12-25 (Sunday)	0001	28	17	23	1015	N	09	05	0.4	2	84	04	0.0
	0600			22	1017	NNE	13	10	0.5	3	91	02	0.0
	1200			24	1014	NNW	12	08	0.5	3	52	01	0.0
	1800			23	1013	NNW	09	05	0.5	3	68	02	0.0
15-12-25 (Monday)	0001	28	17	23	1014	NNW	11	07	0.4	2	84	05	0.0
	0600			22	1016	NNE	13	09	0.5	3	90	04	0.0
	1200			24	1014	NNE	12	08	0.6	3	54	02	0.0
	1800			23	1013	NNW	09	05	0.4	2	68	03	0.0
16-12-25 (Tuesday)	0001	28	17	23	1014	NNW	07	04	0.4	2	86	06	0.0
	0600			22	1015	NNW	12	08	0.4	2	91	05	0.0
	1200			24	1014	N	11	07	0.4	2	54	03	0.0
	1800			23	1013	W	08	05	0.4	2	69	04	0.0
17-12-25 (Wednesday)	0001	28	17	23	1014	NNW	10	06	0.5	3	85	05	0.0
	0600			22	1015	NNE	11	08	0.5	3	90	04	0.0
	1200			24	1014	NNE	12	09	0.5	3	54	02	0.0
	1800			23	1013	NW	09	05	0.5	3	67	03	0.0

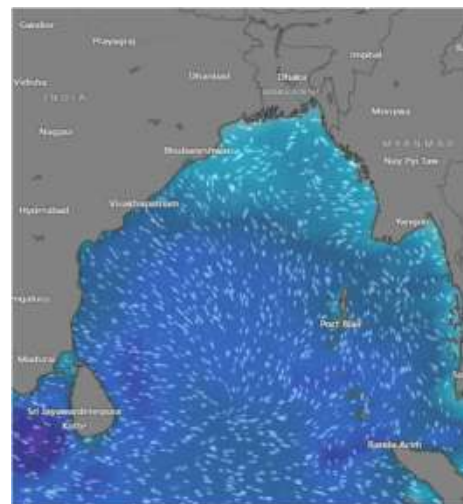
14 Dec 2025



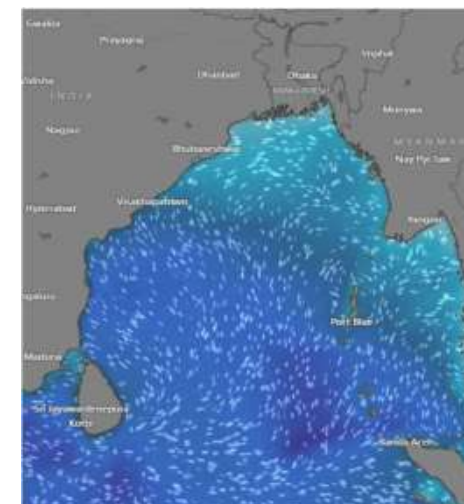
15 Dec 2025



16 Dec 2025



17 Dec 2025



Significant wave height (m)



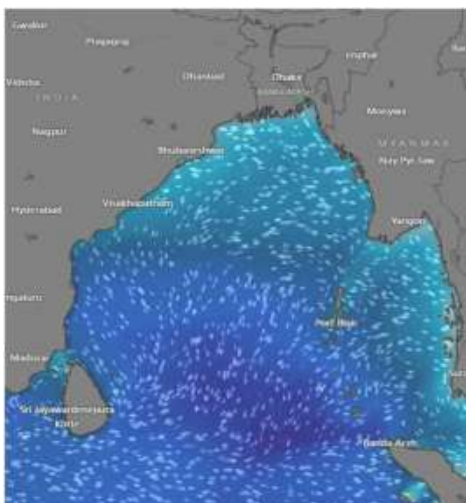
MARINE WEATHER FORECAST (14 to 21 Dec 2025)

PAYRA FAIRWAY (21° 22' N, 090° 6' E)

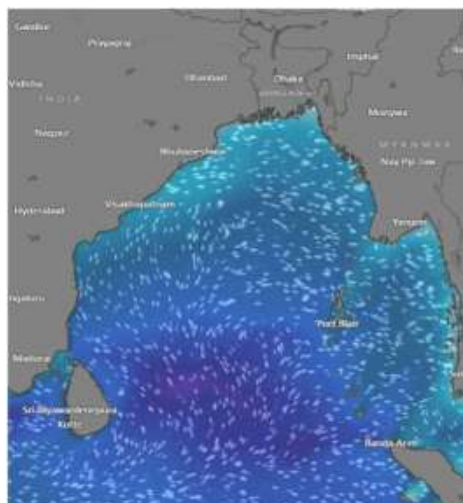


Date	Time	Air Temp (°C)		Sea Surface Temp (°C)	Baro Pressure (mbar)	Wind Direction	Wind Spd (kts)		Wave Ht (m)	Sea State	Humidity (%)	Prob of Rain (%)	Amount of Rain (mm)
		Max	Min				Gusting	Avg					
18-12-25 (Thursday)	0001	28	17	23	1014	NNW	09	06	0.5	3	84	05	0.0
	0600			22	1015	NNE	10	06	0.6	3	91	05	0.0
	1200			24	1014	NNE	10	05	0.6	3	55	04	0.0
	1800			23	1013	NW	10	04	0.6	3	68	03	0.0
19-12-25 (Friday)	0001	28	17	23	1014	NNW	09	06	0.6	3	85	05	0.0
	0600			22	1015	NNE	10	07	0.6	3	90	04	0.0
	1200			24	1014	NNE	08	05	0.6	3	54	02	0.0
	1800			23	1013	NE	07	04	0.6	3	68	03	0.0
20-12-25 (Saturday)	0001	28	17	23	1014	W	05	03	0.6	3	84	05	0.0
	0600			22	1015	NNW	08	05	0.6	3	91	03	0.0
	1200			24	1014	N	10	06	0.6	3	52	02	0.0
	1800			23	1013	N	09	05	0.5	3	66	04	0.0
21-12-25 (Sunday)	0001	28	17	23	1014	W	05	03	0.6	3	84	05	0.0
	0600			22	1015	NNW	08	05	0.6	3	91	03	0.0
	1200			24	1014	N	10	06	0.6	3	52	02	0.0
	1800			23	1013	N	09	05	0.5	3	66	04	0.0

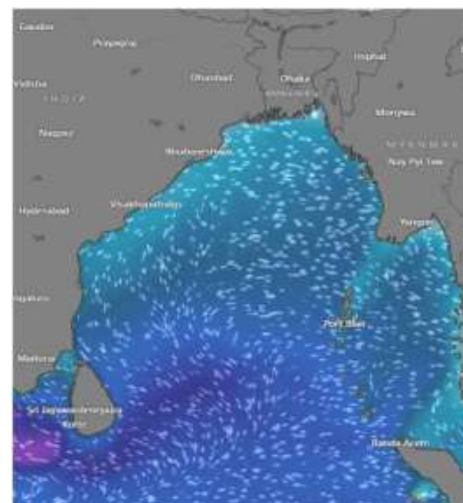
18 Dec 2025



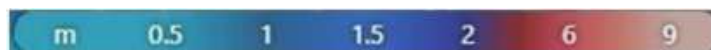
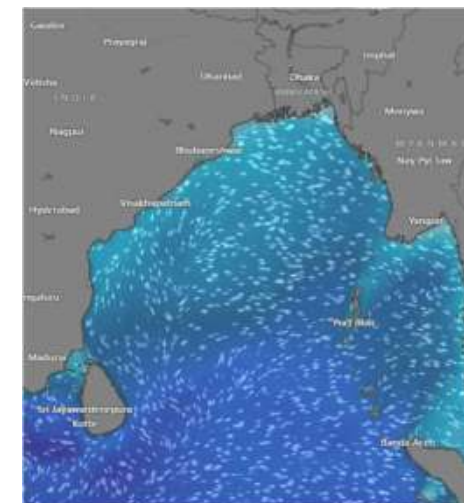
19 Dec 2025



20 Dec 2025



21 Dec 2025



Significant wave height (m)



MARINE WEATHER FORECAST (14 to 21 Dec 2025)

MONGLA FAIRWAY (21° 26' N, 089° 34' E)



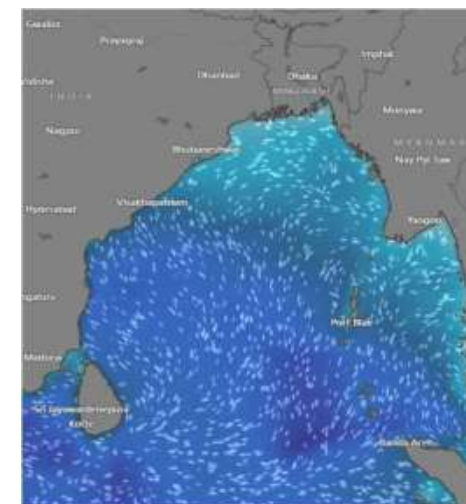
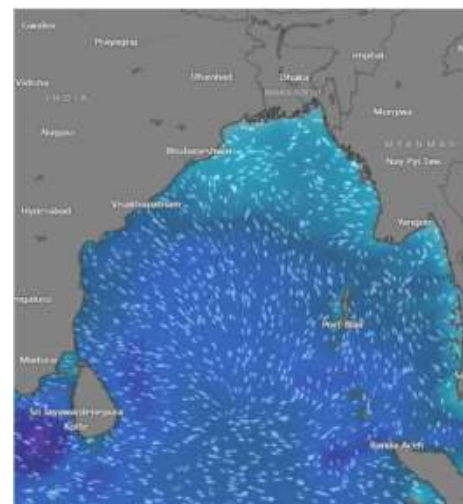
Date	Time	Air Temp (°C)		Sea Surface Temp (°C)	Baro Pressure (mbar)	Wind Direction	Wind Spd (kts)		Wave Ht (m)	Sea State	Humidity (%)	Prob of Rain (%)	Amount of Rain (mm)
		Max	Min				Gusting	Avg					
14-12-25 (Sunday)	0001	27	16	23	1015	NNW	08	05	0.4	2	84	05	0.0
	0600			22	1017	N	12	08	0.5	3	90	03	0.0
	1200			24	1014	NNE	12	08	0.6	3	53	02	0.0
	1800			23	1013	NNE	09	05	0.5	3	68	03	0.0
15-12-25 (Monday)	0001	27	16	23	1014	NNW	13	09	0.4	2	85	05	0.0
	0600			22	1016	NNE	14	10	0.5	3	90	04	0.0
	1200			24	1014	NNE	12	08	0.6	3	52	02	0.0
	1800			23	1013	NNW	09	05	0.4	2	67	03	0.0
16-12-25 (Tuesday)	0001	27	16	23	1014	NNW	10	06	0.4	2	85	05	0.0
	0600			22	1015	NNE	12	08	0.4	2	91	04	0.0
	1200			24	1014	N	11	07	0.4	2	54	02	0.0
	1800			23	1013	W	09	05	0.4	2	69	03	0.0
17-12-25 (Wednesday)	0001	27	16	23	1014	NW	09	07	0.4	2	85	05	0.0
	0600			22	1015	NNE	10	06	0.5	3	90	03	0.0
	1200			24	1014	NNE	11	07	0.5	3	54	02	0.0
	1800			23	1013	W	09	05	0.5	3	69	03	0.0

14 Dec 2025

15 Dec 2025

16 Dec 2025

17 Dec 2025



Significant wave height (m)

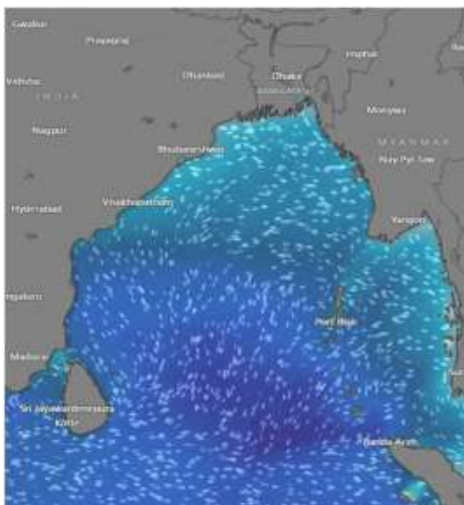


MARINE WEATHER FORECAST (14 to 21 Dec 2025) MONGLA FAIRWAY (21° 26' N, 089° 34' E)

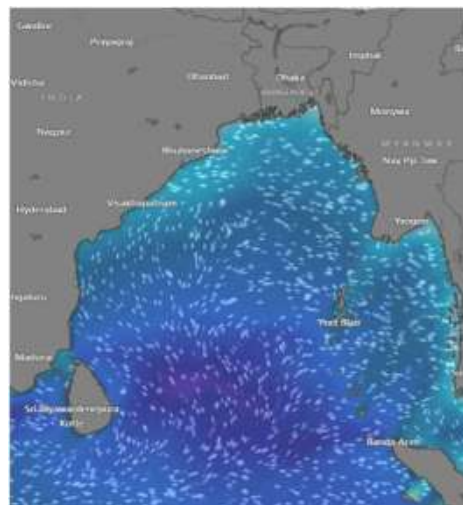


Date	Time	Air Temp (°C)		Sea Surface Temp (°C)	Baro Pressure (mbar)	Wind Direction	Wind Spd (kts)		Wave Ht (m)	Sea State	Humidity (%)	Prob of Rain (%)	Amount of Rain (mm)
		Max	Min				Gusting	Avg					
18-12-25 (Thursday)	0001	27	16	23	1014	NW	11	08	0.6	3	86	05	0.0
	0600			22	1015	NNE	13	07	0.7	3	91	03	0.0
	1200			24	1014	NNE	10	07	0.6	3	62	04	0.0
	1800			23	1013	W	10	04	0.6	3	68	05	0.0
19-12-25 (Friday)	0001	27	16	23	1014	NNW	09	05	0.6	3	85	05	0.0
	0600			22	1015	NNE	12	08	0.7	3	90	04	0.0
	1200			24	1014	NNE	09	06	0.6	3	56	02	0.0
	1800			23	1013	W	09	05	0.6	3	67	03	0.0
20-12-25 (Saturday)	0001	27	16	23	1014	W	05	03	0.6	3	84	06	0.0
	0600			22	1015	NNW	09	05	0.6	3	91	05	0.0
	1200			24	1014	NNW	07	04	0.5	3	53	02	0.0
	1800			23	1013	W	11	07	0.5	3	66	04	0.0
21-12-25 (Sunday)	0001	27	16	23	1014	W	09	05	0.6	3	84	06	0.0
	0600			22	1015	NNW	09	04	0.6	3	91	05	0.0
	1200			24	1014	NNW	07	03	0.5	3	53	02	0.0
	1800			23	1013	W	10	06	0.5	3	66	04	0.0

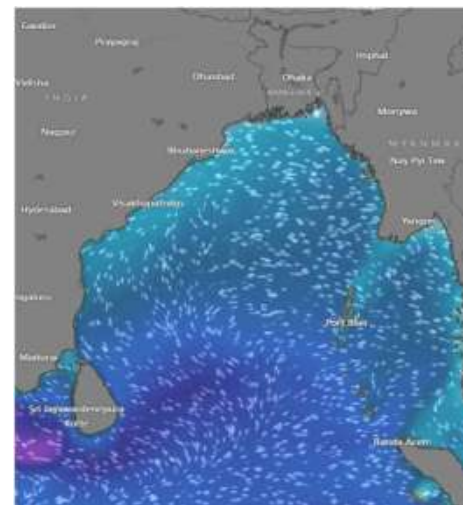
18 Dec 2025



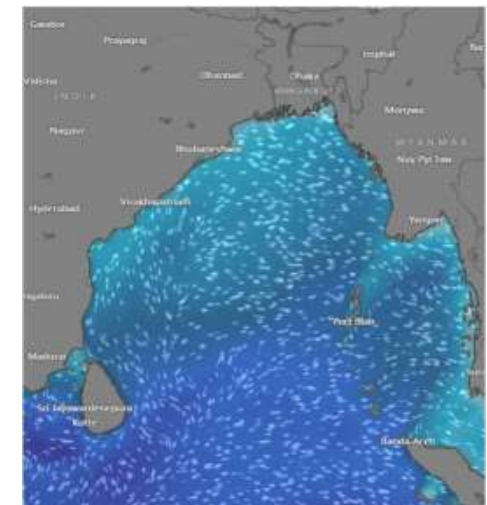
19 Dec 2025



20 Dec 2025



21 Dec 2025



Significant wave height (m)



MARINE WEATHER FORECAST (14 to 21 Dec 2025)

OUTER EEZ (18° 48' N, 090° 30' E)



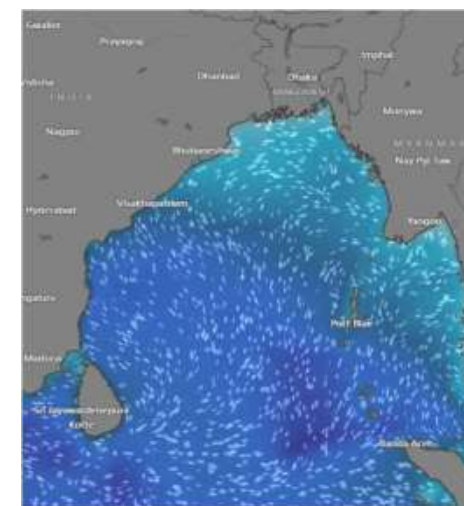
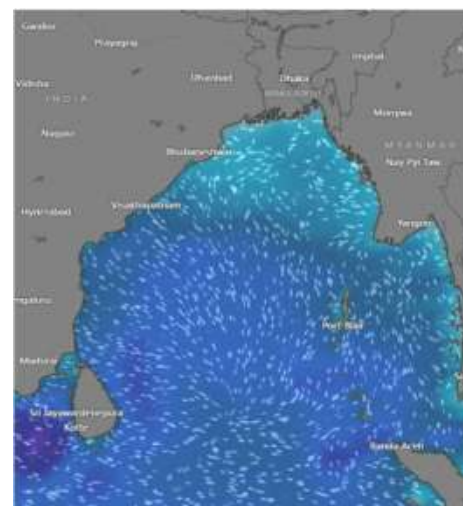
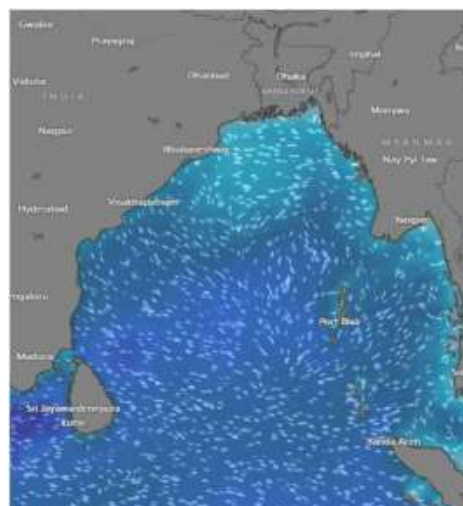
Date	Time	Air Temp (°C)		Sea Surface Temp (°C)	Baro Pressure (mbar)	Wind Direction	Wind Spd (kts)		Wave Ht (m)	Sea State	Humidity (%)	Prob of Rain (%)	Amount of Rain (mm)
		Max	Min				Gusting	Avg					
14-12-25 (Sunday)	0001	28	17	25	1015	NE	05	03	0.6	3	84	05	0.0
	0600			24	1017	NNW	10	06	0.6	3	90	03	0.0
	1200			25	1014	NNE	12	08	0.6	3	54	02	0.0
	1800			25	1013	NNE	12	08	0.7	3	67	04	0.0
15-12-25 (Monday)	0001	28	17	25	1014	NNE	11	07	0.6	3	85	05	0.0
	0600			24	1016	NNE	13	09	0.6	3	91	04	0.0
	1200			25	1013	NNE	12	09	0.7	3	52	02	0.0
	1800			25	1012	NNE	11	08	0.7	3	67	03	0.0
16-12-25 (Tuesday)	0001	27	17	25	1014	NNE	12	08	0.7	3	84	06	0.0
	0600			24	1016	NNE	13	09	0.7	3	91	04	0.0
	1200			25	1013	N	12	08	0.7	3	54	02	0.0
	1800			25	1012	N	11	07	0.7	3	69	04	0.0
17-12-25 (Wednesday)	0001	27	17	25	1014	NNW	10	06	0.6	3	85	05	0.0
	0600			24	1016	N	13	09	0.7	3	91	03	0.0
	1200			25	1013	NNE	12	08	0.8	3	53	02	0.0
	1800			25	1012	N	14	10	0.8	3	68	04	0.0

14 Dec 2025

15 Dec 2025

16 Dec 2025

17 Dec 2025



Significant wave height (m)



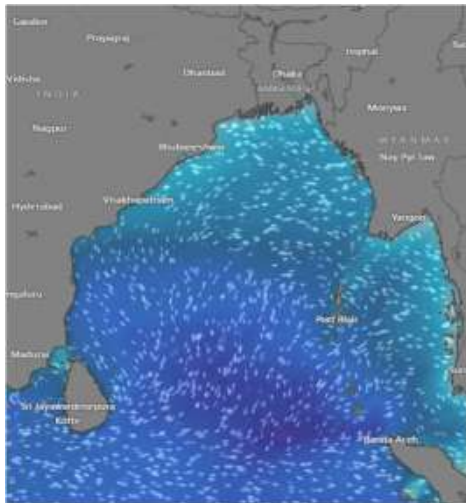
MARINE WEATHER FORECAST (14 to 21 Dec 2025)

OUTER EEZ (18° 48' N, 090° 30' E)

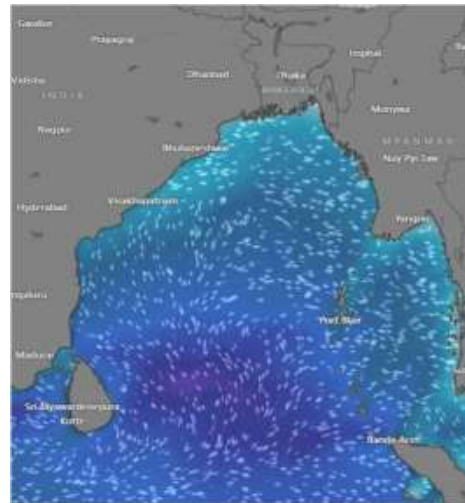


Date	Time	Air Temp (°C)		Sea Surface Temp (°C)	Baro Pressure (mbar)	Wind Direction	Wind Spd (kts)		Wave Ht (m)	Sea State	Humidity (%)	Prob of Rain (%)	Amount of Rain (mm)
		Max	Min				Gusting	Avg					
18-12-25 (Thursday)	0001	27	17	25	1013	NNW	12	07	0.8	3	84	05	0.0
	0600			24	1015	N	15	11	0.8	3	85	03	0.0
	1200			25	1012	NNE	16	10	0.8	3	65	02	0.0
	1800			25	1011	NW	15	07	0.8	3	72	04	0.0
19-12-25 (Friday)	0001	27	17	25	1013	N	09	06	0.8	3	85	05	0.0
	0600			24	1014	NNE	10	07	0.8	3	90	04	0.0
	1200			25	1013	NNE	08	05	0.8	3	54	02	0.0
	1800			25	1012	N	07	04	0.7	3	69	03	0.0
20-12-25 (Saturday)	0001	27	17	25	1013	N	07	04	0.8	3	84	06	0.0
	0600			24	1014	NNE	09	05	0.7	3	91	04	0.0
	1200			25	1013	E	07	04	0.7	3	53	02	0.0
	1800			25	1012	NNE	11	07	0.7	3	69	03	0.0
21-12-25 (Sunday)	0001	27	17	25	1013	N	09	05	0.8	3	84	06	0.0
	0600			24	1014	NNE	09	04	0.7	3	91	04	0.0
	1200			25	1013	E	07	03	0.7	3	53	02	0.0
	1800			25	1012	NNE	14	09	0.7	3	68	03	0.0

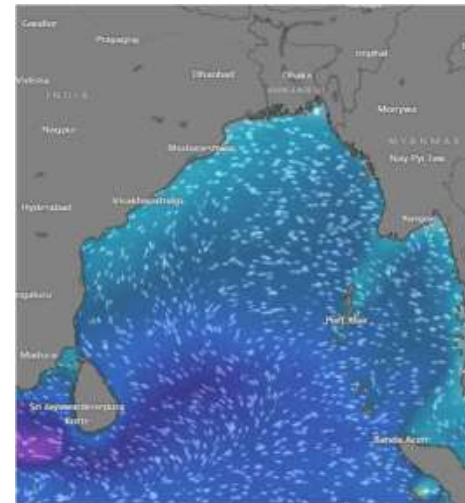
18 Dec 2025



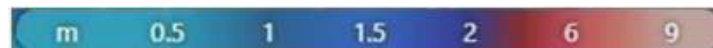
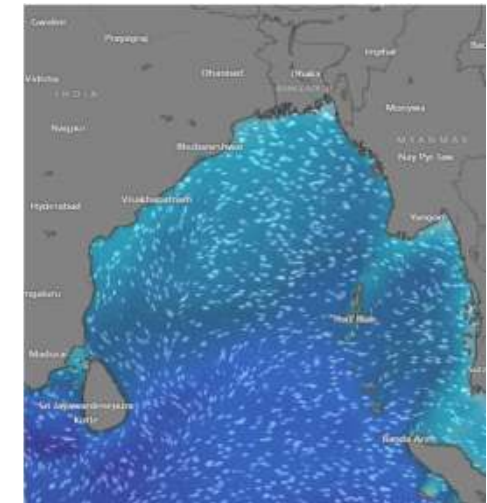
19 Dec 2025



20 Dec 2025



21 Dec 2025



Significant wave height (m)



PREDICTED SURFACE PRESSURE FORECAST (14 to 20 Dec 2025)



14 Dec 2025



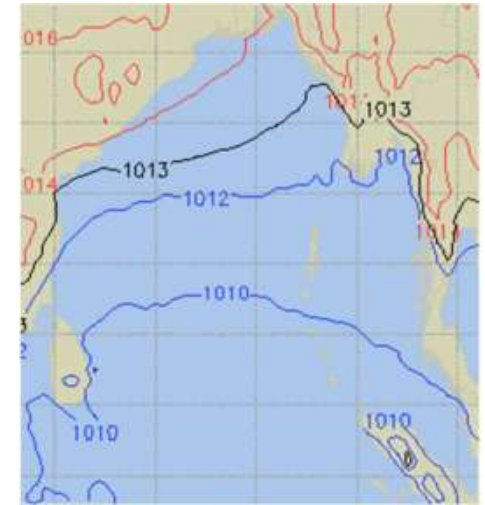
15 Dec 2025



16 Dec 2025



17 Dec 2025



18 Dec 2025



19 Dec 2025



20 Dec 2025

