



SUMMARY OF MARINE WEATHER FORECAST
COASTAL AREA OF BANGLADESH
DATE: 20 to 27 Oct 2025



Fleet Forecast	Seasonal low lies over South Bay, extending its to North Bay of Bengal.
Wind Direction, Speed	North/North easterly, 10-15 kts.
Wave Height & Sea State	Ctg Outer Anchorage: 0.2 to 0.5 m (Sea state: 2 to 3) Abeam to Cox's Bazar: 0.7 to 1.3 m (Sea state: 3 to 4) St. Martin's Island: 0.8 to 1.5 m (Sea state: 3 to 4) Payra Fairway Buoy: 0.6 to 1.2 m (Sea state 3 to 4) Mongla Fairway Buoy: 0.7 to 1.3 m (Sea state: 3 to 4) Outer EEZ: 0.9 to 1.7 m (Sea state: 3 to 4)
Sea Surface Temperature	26°C - 30°C
Baro Pressure	1006-1010 mb
Rainfall	Light to moderate rain/thunder showers is likely to occur over Bay of Bengal & adjoining area.
Visibility	Visibility: 3.0 - 5.0 km (Hazy condition likely to occur during rain/shower)

Marine Weather Outlook (20 to 27 Oct 2025):

- Rainfall activity may increase.



MARINE WEATHER FORECAST (20 to 27 Oct 2025)

PATENGA POINT (22° 12' N, 091° 38' E)



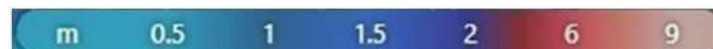
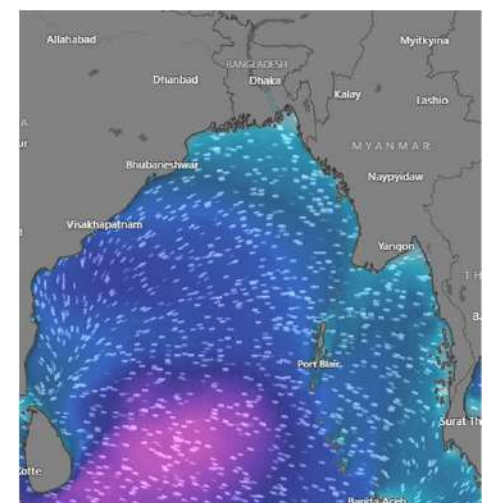
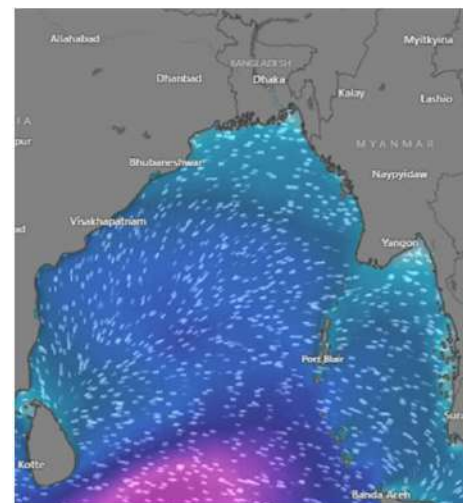
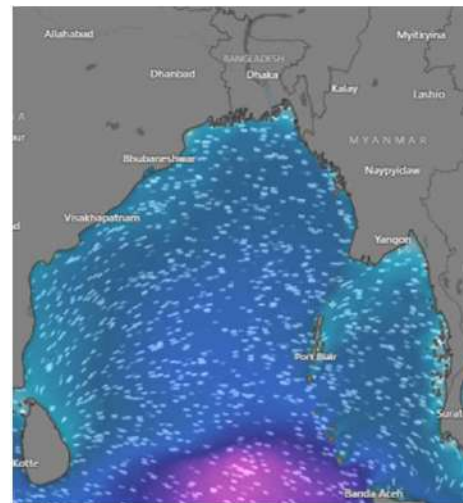
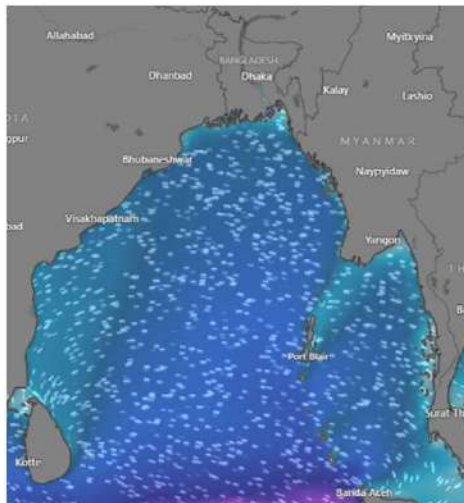
Date	Time	Air Temp (°C)		Sea Surface Temp (°C)	Baro Pressure (mbar)	Wind Direction	Wind Spd (kts)		Wave Ht (m)	Sea State	Humidity (%)	Prob of Rain (%)	Amount of Rain (mm)
		Max	Min				Gusting	Avg					
20-10-25 (Monday)	0001	30	27	26	1009	NW	07	03	0.2	2	88	58	0.2
	0600			27	1009	NNW	08	04	0.2	2	85	54	0.2
	1200			30	1009	WNW	08	05	0.2	2	82	51	0.2
	1800			28	1007	NW	10	03	0.2	2	87	43	0.1
21-10-25 (Tuesday)	0001	30	27	28	1009	NW	06	02	0.2	2	88	51	0.2
	0600			30	1008	NNW	06	03	0.2	2	85	34	0.2
	1200			30	1009	NE	08	05	0.3	2	80	37	0.2
	1800			27	1007	NW	11	05	0.2	2	85	35	0.1
22-10-25 (Wednesday)	0001	30	27	28	1009	NW	08	04	0.2	2	87	58	0.2
	0600			29	1010	NNW	07	04	0.2	2	85	33	0.2
	1200			30	1007	WNW	09	05	0.3	2	83	35	0.2
	1800			29	1008	NW	14	06	0.2	2	89	41	0.1
23-10-25 (Thursday)	0001	31	27	26	1009	N	13	08	0.2	2	90	35	0.2
	0600			29	1009	NE	11	06	0.2	2	86	32	0.2
	1200			30	1009	NW	10	05	0.2	2	81	36	0.2
	1800			29	1007	WSW	12	06	0.2	2	85	45	0.2

20 Oct 2025

21 Oct 2025

22 Oct 2025

23 Oct 2025



Significant wave height (m)



MARINE WEATHER FORECAST (20 to 27 Oct 2025) PATENGA POINT (22° 12' N, 091° 38' E)



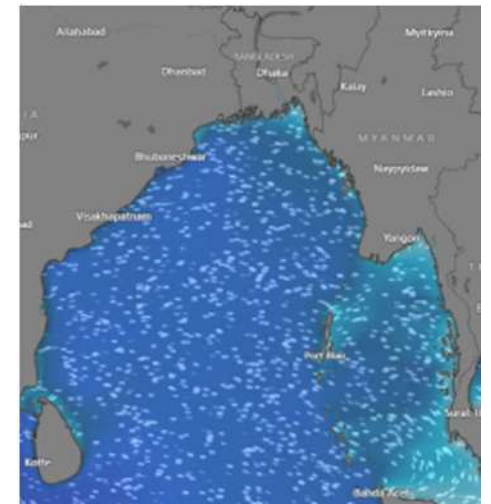
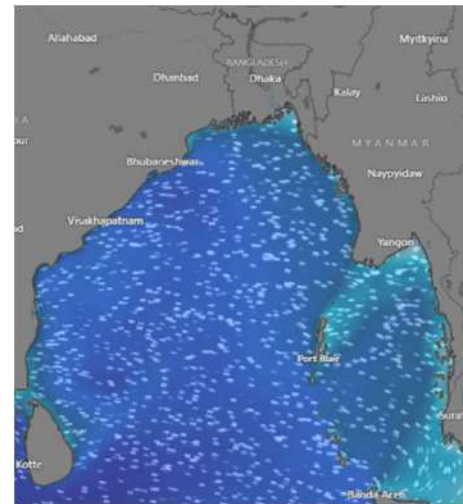
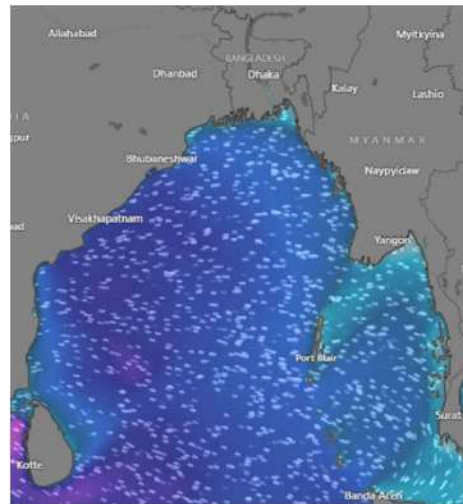
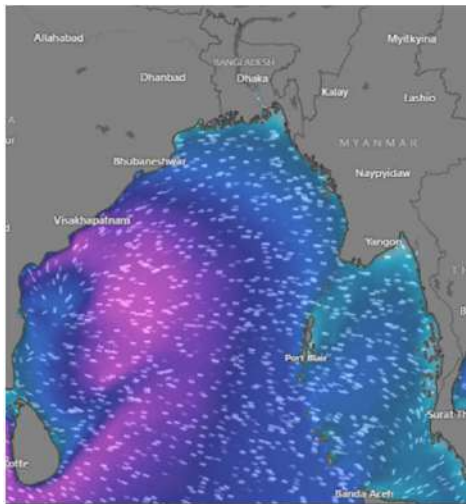
Date	Time	Air Temp (°C)		Sea Surface Temp (°C)	Baro Pressure (mbar)	Wind Direction	Wind Spd (kts)		Wave Ht (m)	Sea State	Humidity (%)	Prob of Rain (%)	Amount of Rain (mm)
		Max	Min				Gusting	Avg					
24-10-25 (Friday)	0001	31	27	26	1009	NW	10	04	0.3	2	88	71	0.3
	0600			29	1009	NNW	12	07	0.2	2	91	75	0.4
	1200			30	1009	WNW	10	05	0.3	2	90	80	0.3
	1800			29	1007	NNW	09	03	0.2	2	87	70	0.3
25-10-25 (Saturday)	0001	31	27	26	1009	NW	08	04	0.3	2	89	75	0.3
	0600			29	1010	NNW	11	04	0.2	2	85	75	0.4
	1200			30	1009	WNW	11	06	0.2	2	80	81	0.2
	1800			29	1007	NW	12	06	0.2	2	75	76	0.1
26-10-25 (Sunday)	0001	31	27	26	1009	NW	10	03	0.3	2	85	75	0.3
	0600			29	1010	NNW	09	05	0.2	2	84	75	0.4
	1200			30	1009	WNW	11	02	0.3	2	82	65	0.2
	1800			29	1007	W	13	03	0.2	2	81	73	0.3
27-10-25 (Monday)	0001	31	27	26	1009	NW	10	03	0.3	2	85	75	0.3
	0600			29	1010	NNW	09	05	0.2	2	84	75	0.4
	1200			30	1009	WNW	11	02	0.3	2	82	65	0.2
	1800			29	1007	W	13	03	0.2	2	81	73	0.3

24 Oct 2025

25 Oct 2025

26 Oct 2025

27 Oct 2025



Significant wave height (m)



MARINE WEATHER FORECAST (20 to 27 Oct 2025) ABEAM TO KUTUBDIA (21° 51' N, 091° 40' E)



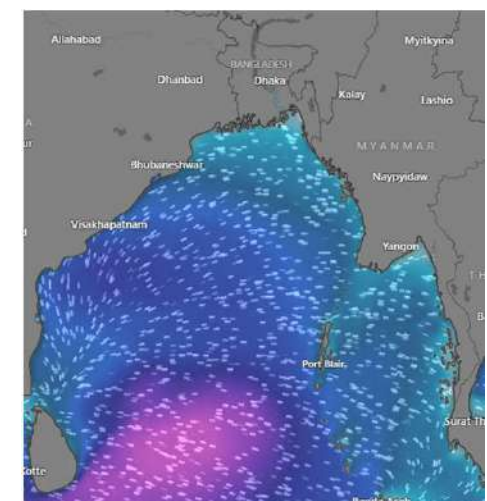
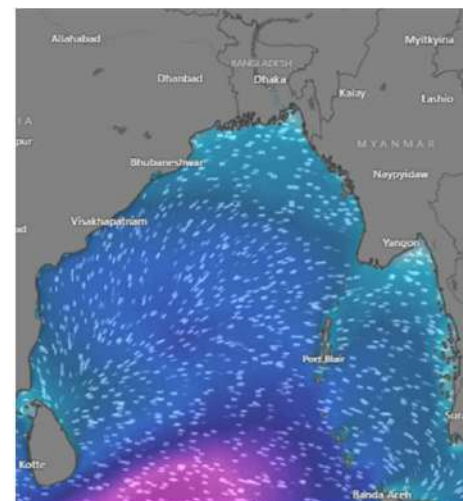
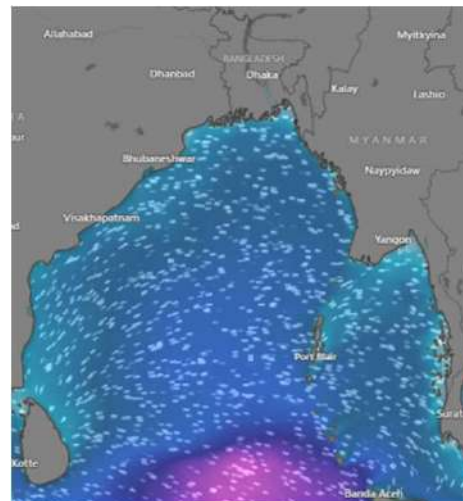
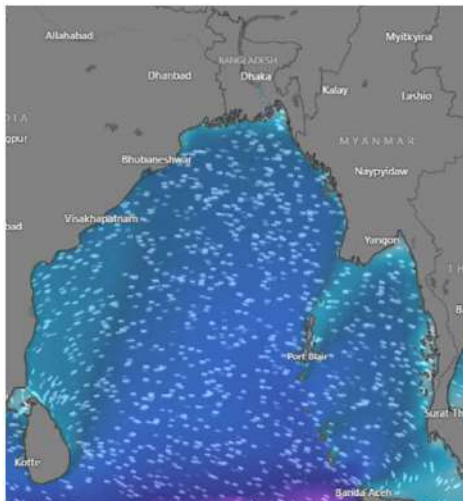
Date	Time	Air Temp (°C)		Sea Surface Temp (°C)	Baro Pressure (mbar)	Wind Direction	Wind Spd (kts)		Wave Ht (m)	Sea State	Humidity (%)	Prob of Rain (%)	Amount of Rain (mm)
		Max	Min				Gusting	Avg					
20-10-25 (Monday)	0001	30	26	28	1009	WNW	08	04	0.3	2	89	53	0.2
	0600			30	1008	NW	09	04	0.3	2	85	36	0.2
	1200			30	1009	NNE	10	06	0.3	2	83	38	0.2
	1800			27	1007	NE	09	03	0.3	2	85	43	0.1
21-10-25 (Tuesday)	0001	30	26	28	1008	WNW	05	02	0.2	2	87	58	0.2
	0600			30	1008	NW	06	03	0.2	2	85	32	0.2
	1200			30	1009	NNE	09	05	0.2	2	80	36	0.2
	1800			27	1007	NE	11	03	0.2	2	85	43	0.1
22-10-25 (Wednesday)	0001	30	26	28	1009	N	08	05	0.2	2	88	58	0.2
	0600			29	1008	NE	09	05	0.2	2	85	32	0.2
	1200			30	1008	NW	08	04	0.2	2	80	36	0.2
	1800			29	1007	NW	12	06	0.2	2	85	42	0.1
23-10-25 (Thursday)	0001	30	26	28	1008	N	10	06	0.2	2	88	58	0.2
	0600			29	1008	NE	09	05	0.2	2	85	32	0.2
	1200			30	1006	NNW	09	05	0.2	2	80	36	0.2
	1800			29	1007	NW	11	06	0.2	2	85	43	0.2

20 Oct 2025

21 Oct 2025

22 Oct 2025

23 Oct 2025



Significant wave height (m)



MARINE WEATHER FORECAST (20 to 27 Oct 2025)

ABEAM TO KUTUBDIA (21° 51' N, 091° 40' E)



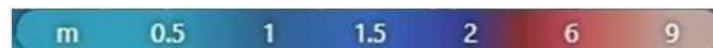
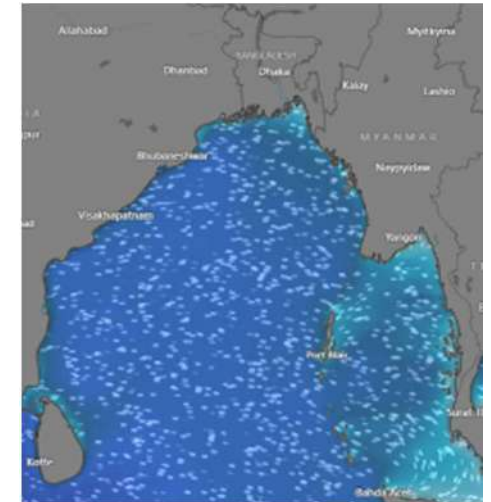
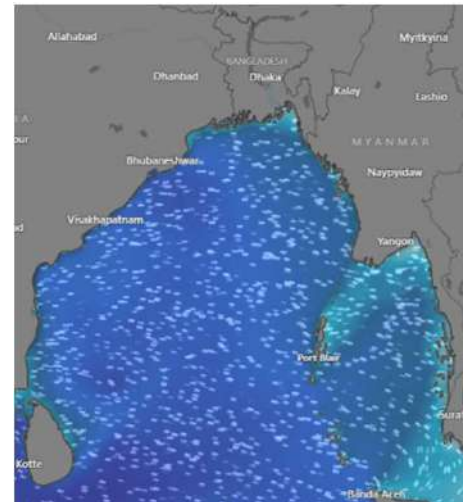
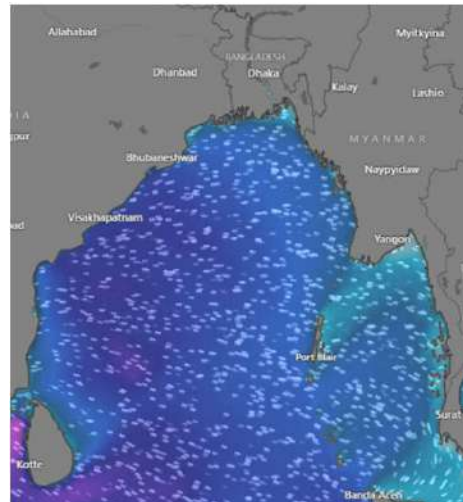
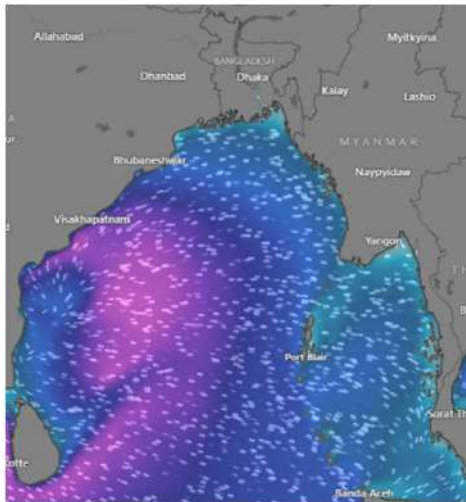
Date	Time	Air Temp (°C)		Sea Surface Temp (°C)	Baro Pressure (mbar)	Wind Direction	Wind Spd (kts)		Wave Ht (m)	Sea State	Humidity (%)	Prob of Rain (%)	Amount of Rain (mm)
		Max	Min				Gusting	Avg					
24-10-25 (Friday)	0001	30	26	26	1009	NE	12	06	0.3	2	88	26	0.1
	0600			29	1008	NE	11	05	0.3	2	86	34	0.2
	1200			30	1009	NW	06	03	0.3	2	80	34	0.2
	1800			29	1007	WSW	11	05	0.3	2	85	43	0.2
25-10-25 (Saturday)	0001	30	26	28	1009	WNW	13	04	0.3	2	88	71	0.3
	0600			30	1008	NW	09	04	0.3	2	91	75	0.4
	1200			30	1009	NNE	07	04	0.3	2	90	80	0.3
	1800			27	1007	NE	06	03	0.3	2	87	70	0.3
26-10-25 (Sunday)	0001	30	26	28	1009	WNW	09	04	0.3	2	88	71	0.3
	0600			30	1008	NW	09	04	0.3	2	91	75	0.4
	1200			30	1009	NNE	10	06	0.3	2	90	80	0.3
	1800			27	1007	NE	09	03	0.3	2	87	70	0.3
27-10-25 (Monday)	0001	30	26	28	1009	WNW	08	03	0.3	2	85	75	0.3
	0600			30	1008	NW	09	05	0.3	2	84	75	0.4
	1200			30	1009	NNE	10	04	0.3	2	82	65	0.2
	1800			27	1007	NE	11	04	0.3	2	84	70	0.3

24 Oct 2025

25 Oct 2025

26 Oct 2025

27 Oct 2025



Significant wave height (m)



MARINE WEATHER FORECAST (20 to 27 Oct 2025) ABEAM TO ELEPHANT POINT (21° 11' N, 091° 52' E)



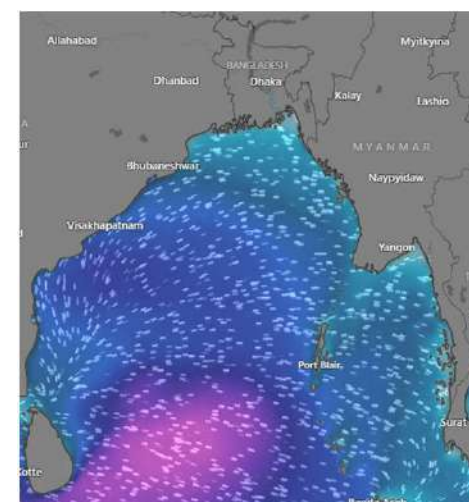
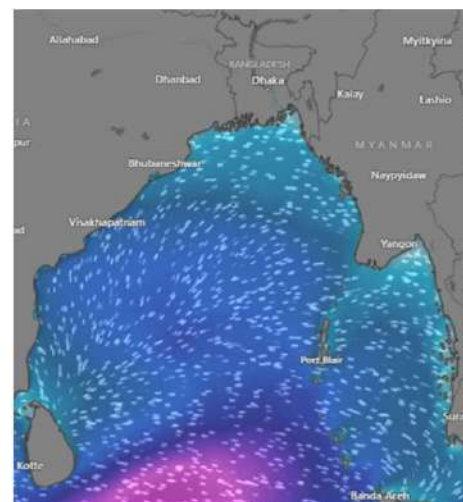
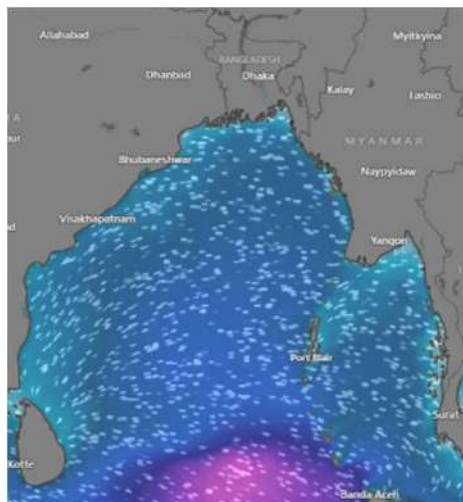
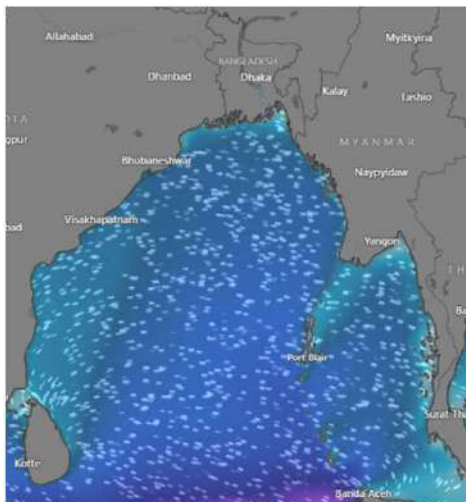
Date	Time	Air Temp (°C)		Sea Surface Temp (°C)	Baro Pressure (mbar)	Wind Direction	Wind Spd (kts)		Wave Ht (m)	Sea State	Humidity (%)	Prob of Rain (%)	Amount of Rain (mm)
		Max	Min				Gusting	Avg					
20-10-25 (Monday)	0001	30	27	30	1009	NE	09	04	0.7	3	83	32	0.2
	0600			27	1009	NNE	08	03	0.8	3	82	36	0.2
	1200			30	1008	WNW	07	03	0.8	3	85	43	0.1
	1800			28	1009	NE	08	04	0.8	3	80	58	0.2
21-10-25 (Tuesday)	0001	30	27	30	1009	NE	08	04	0.7	3	80	40	0.1
	0600			27	1009	NNE	07	03	0.8	3	80	55	0.2
	1200			30	1008	WNW	08	04	0.8	3	85	32	0.2
	1800			28	1009	NE	08	04	0.8	3	80	36	0.2
22-10-25 (Wednesday)	0001	30	26	28	1009	WNW	08	04	0.3	2	88	58	0.2
	0600			29	1008	NW	09	04	0.3	2	85	32	0.2
	1200			30	1009	NNE	10	06	0.3	2	80	36	0.2
	1800			29	1007	NE	09	03	0.3	2	85	44	0.1
23-10-25 (Thursday)	0001	30	27	26	1009	NE	07	03	0.9	3	88	58	0.2
	0600			29	1009	NNE	10	05	0.8	3	85	32	0.2
	1200			30	1008	WNW	08	04	0.8	3	80	36	0.2
	1800			29	1009	NE	10	05	0.8	3	86	45	0.2

20 Oct 2025

21 Oct 2025

22 Oct 2025

23 Oct 2025



Significant wave height (m)



MARINE WEATHER FORECAST (20 to 27 Oct 2025) ABEAM TO ELEPHANT POINT (21° 11' N, 091° 52' E)



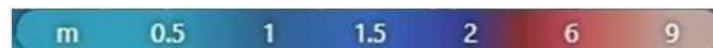
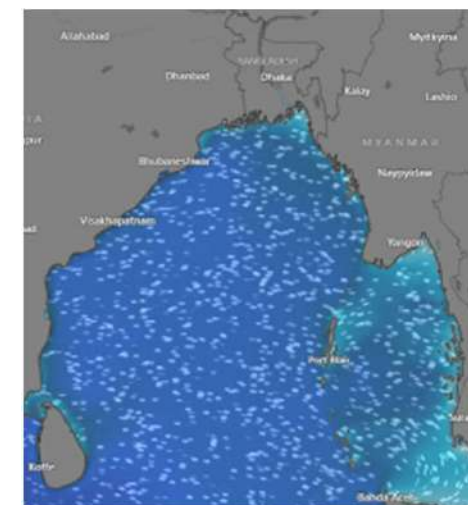
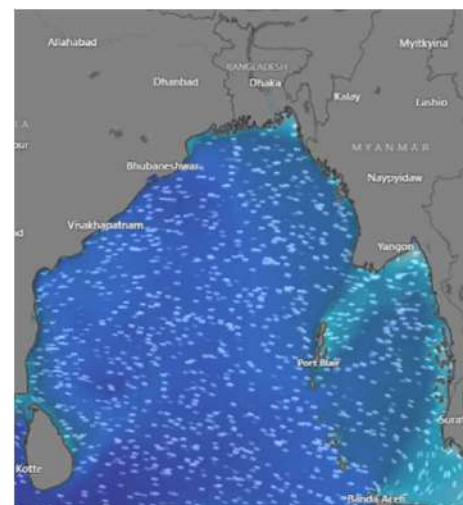
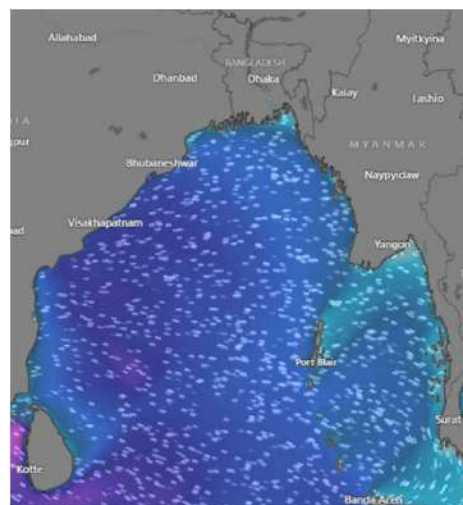
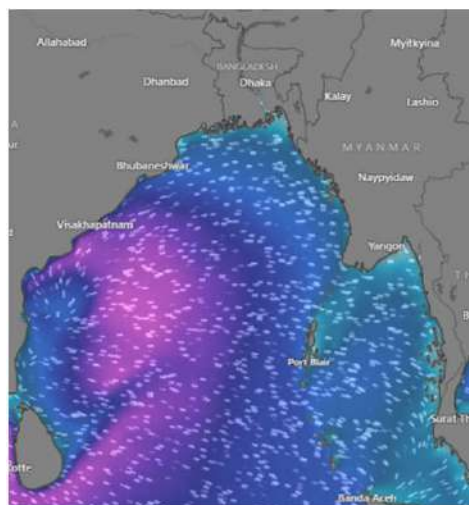
Date	Time	Air Temp (°C)		Sea Surface Temp (°C)	Baro Pressure (mbar)	Win Direction	Wind Spd (kts)		Wave Ht (m)	Sea State	Humidity (%)	Prob of Rain (%)	Amount of Rain (mm)
		Max	Min				Gusting	Avg					
24-10-25 (Friday)	0001	31	27	28	1009	NE	10	04	0.9	3	91	75	0.4
	0600			30	1009	NNE	10	05	0.8	3	90	80	0.3
	1200			30	1008	WNW	08	04	0.8	3	87	70	0.3
	1800			27	1009	NE	08	04	0.8	3	81	73	0.3
25-10-25 (Saturday)	0001	31	27	28	1009	NE	08	03	0.9	3	88	71	0.3
	0600			30	1009	NNE	10	05	0.8	3	91	75	0.4
	1200			30	1008	WNW	08	04	0.8	3	90	80	0.3
	1800			27	1009	NE	08	04	0.8	3	87	70	0.3
26-10-25 (Sunday)	0001	31	27	28	1009	NE	07	03	0.9	3	89	75	0.3
	0600			30	1009	NNE	10	05	0.8	3	85	75	0.4
	1200			30	1008	WNW	08	04	0.8	3	80	81	0.2
	1800			27	1009	NE	08	04	0.8	3	88	71	0.3
27-10-25 (Monday)	0001	31	27	28	1009	NE	07	03	0.9	3	85	70	0.4
	0600			30	1009	NNE	10	05	0.8	3	91	55	0.3
	1200			30	1008	WNW	08	04	0.8	3	87	52	0.3
	1800			27	1009	NE	09	04	0.7	3	81	61	0.3

24 Oct 2025

25 Oct 2025

26 Oct 2025

27 Oct 2025



Significant wave height (m)



MARINE WEATHER FORECAST (20 to 27 Oct 2025) ABEAM TO ST. MARTIN'S LIGHT HOUSE (20° 37' N, 092° 08' E)



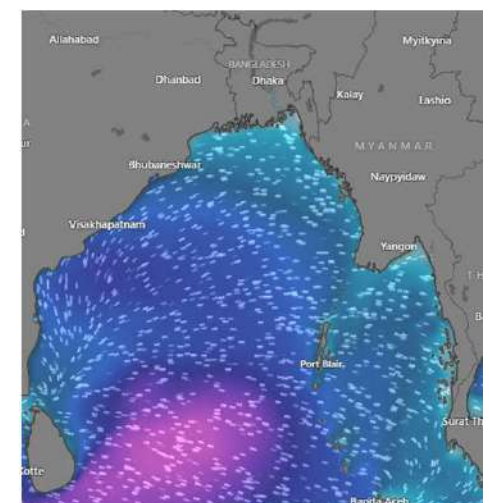
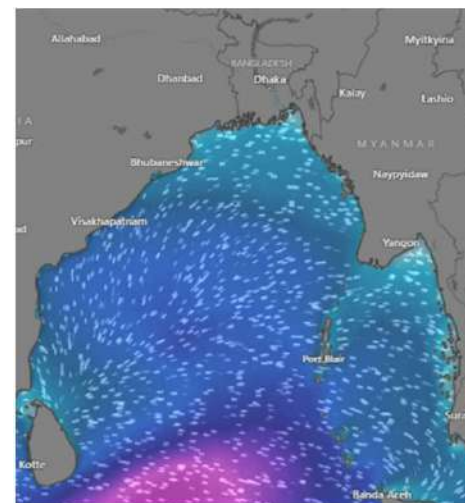
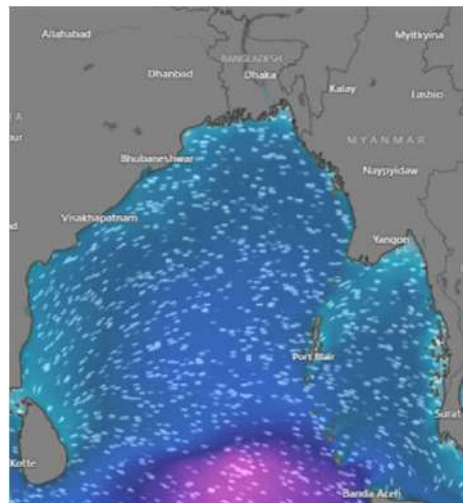
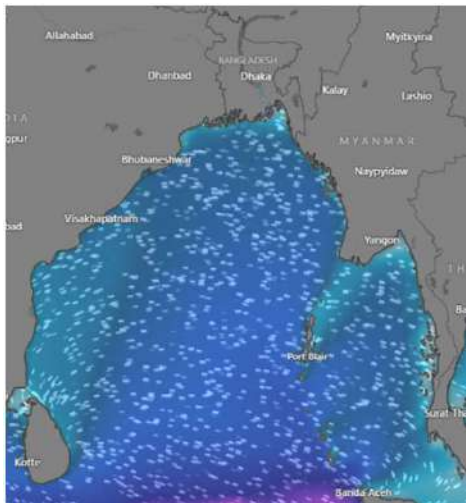
Date	Time	AirTemp (°C)		Sea Surface Temp (°C)	Baro Pressure (mbar)	Wind Direction	Wind Spd (kts)		Wave Ht (m)	Sea State	Humidity (%)	Prob of Rain (%)	Amount of Rain (mm)
		Max	Min				Gusting	Avg					
20-10-25 (Monday)	0001	30	27	30	1007	WNW	09	04	0.7	3	86	40	0.2
	0600			27	1008	NW	09	04	0.8	3	82	58	0.2
	1200			30	1008	NNE	10	06	0.8	3	85	32	0.2
	1800			28	1007	NE	09	03	0.7	3	80	36	0.2
21-10-25 (Tuesday)	0001	30	27	28	1009	WNW	10	05	0.6	3	88	58	0.2
	0600			30	1008	NW	09	05	0.6	3	85	32	0.2
	1200			30	1008	NNE	10	05	0.7	3	80	36	0.2
	1800			27	1009	NE	08	04	0.8	3	85	64	0.3
22-10-25 (Wednesday)	0001	30	27	28	1008	WNW	10	05	0.6	3	88	58	0.2
	0600			29	1008	NW	09	05	0.6	3	85	32	0.2
	1200			30	1010	NNE	10	05	0.6	3	80	36	0.2
	1800			29	1009	NE	08	04	0.6	3	85	40	0.1
23-10-25 (Thursday)	0001	30	27	26	1009	WNW	10	05	0.6	3	88	58	0.2
	0600			29	1008	NW	09	05	0.5	3	85	32	0.2
	1200			30	1007	SE	10	05	0.8	3	80	36	0.2
	1800			29	1009	NE	08	04	0.9	3	84	26	0.1

20 Oct 2025

21 Oct 2025

22 Oct 2025

23 Oct 2025



Significant wave height (m)



MARINE WEATHER FORECAST (20 to 27 Oct 2025) ABEAM TO ST. MARTIN'S LIGHT HOUSE (20° 37'N, 092° 08' E)



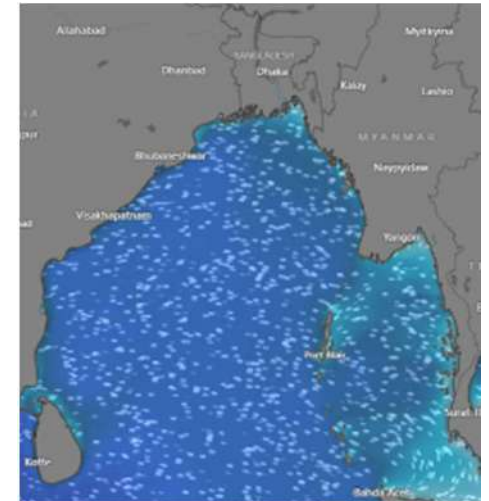
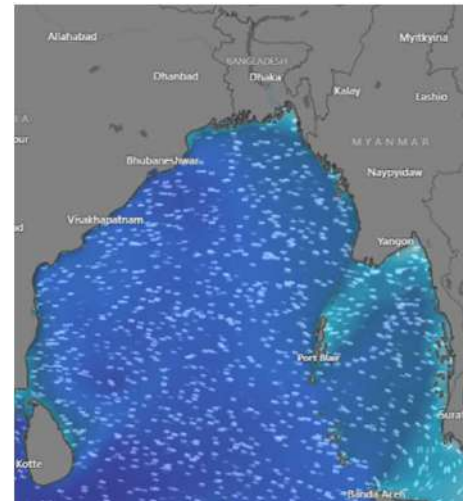
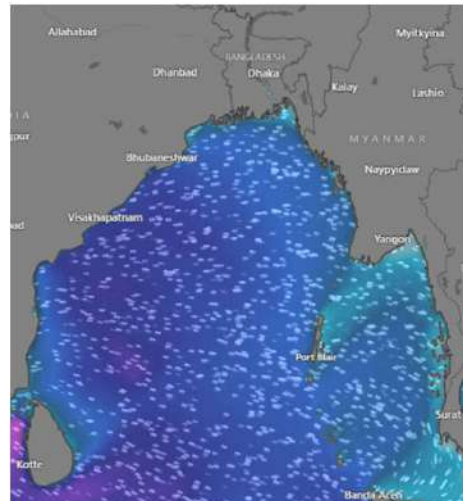
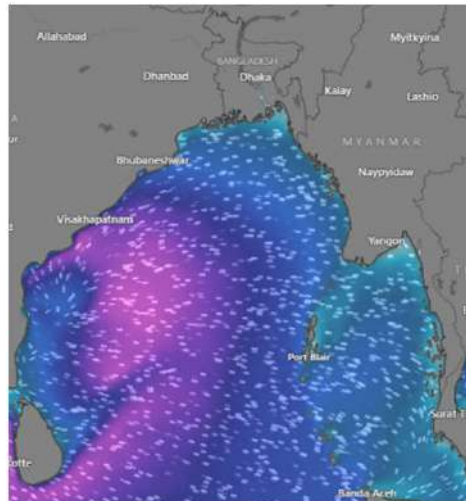
Date	Time	Air Temp (°C)		Sea Surface Temp (°C)	Baro Pressure (mbar)	Wind Direction	Wind Spd (kts)		Wave Ht (m)	Sea State	Humidity (%)	Prob of Rain (%)	Amount of Rain (mm)
		Max	Min				Gusting	Avg					
24-10-25 (Friday)	0001	31	27	28	1009	WNW	09	04	0.9	3	87	70	0.3
	0600			30	1008	NW	09	05	0.9	3	89	75	0.3
	1200			30	1008	NNE	10	05	0.9	3	80	36	0.2
	1800			27	1009	NE	08	04	0.9	3	85	43	0.1
25-10-25 (Saturday)	0001	31	27	28	1009	WNW	10	05	0.7	3	88	71	0.3
	0600			30	1008	NW	09	05	0.6	3	91	75	0.4
	1200			30	1008	NNE	10	05	0.7	3	90	80	0.3
	1800			27	1009	NE	08	04	0.8	3	87	70	0.3
26-10-25 (Sunday)	0001	31	27	28	1009	WNW	10	05	0.7	3	89	75	0.3
	0600			30	1008	NW	09	05	0.7	3	90	80	0.3
	1200			30	1008	NNE	10	05	0.8	3	87	70	0.3
	1800			27	1009	NE	08	04	0.6	3	89	75	0.3
27-10-25 (Monday)	0001	31	27	28	1009	WNW	10	05	0.6	3	85	75	0.4
	0600			30	1008	NW	09	05	0.9	3	87	65	0.4
	1200			30	1008	NNE	10	05	0.8	3	82	55	0.2
	1800			27	1009	NE	08	04	0.9	3	81	70	0.3

24 Oct 2025

25 Oct 2025

26 Oct 2025

27 Oct 2025



Significant wave height (m)



MARINE WEATHER FORECAST (20 to 27 Oct 2025)

PAYRA FAIRWAY (21° 22' N, 090° 6' E)



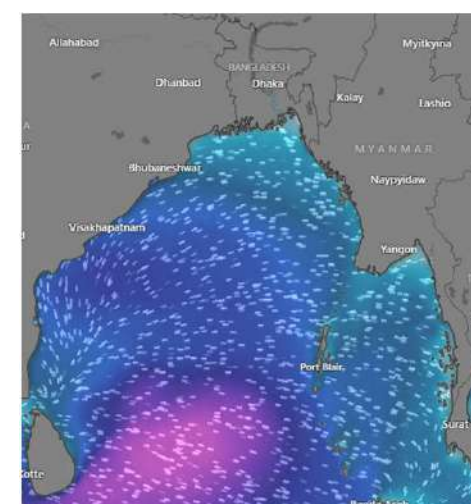
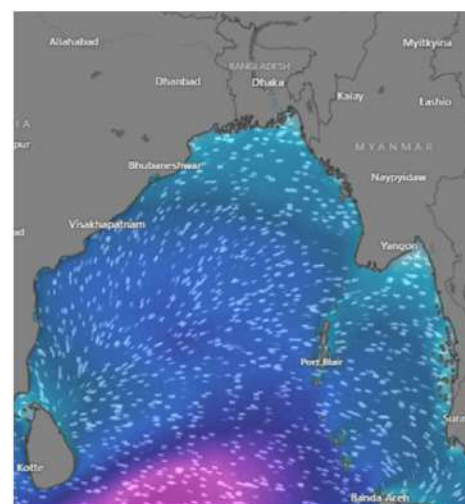
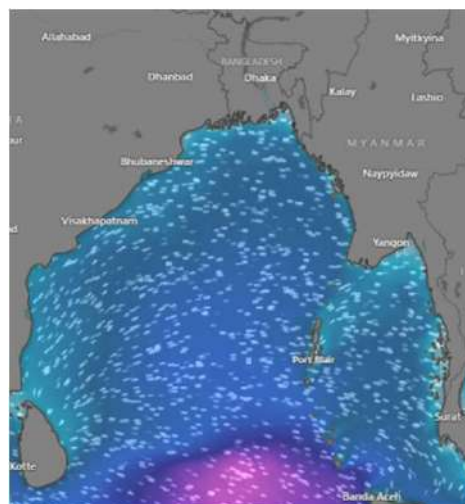
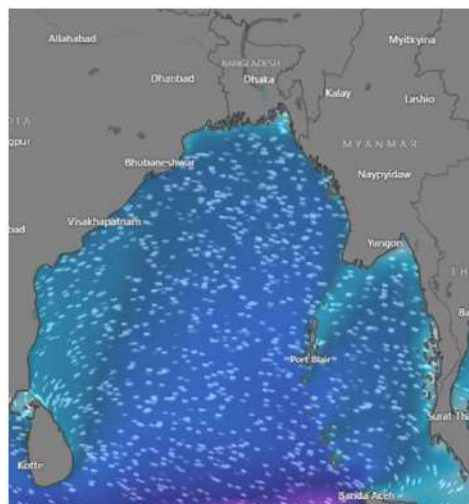
Date	Time	Air Temp (°C)		Sea Surface Temp (°C)	Baro Pressure (mbar)	Wind Direction	Wind Spd (kts)		Wave Ht (m)	Sea State	Humidity (%)	Prob of Rain (%)	Amount of Rain (mm)
		Max	Min				Gusting	Avg					
20-10-25 (Monday)	0001	30	27	30	1009	NE	09	05	0.7	3	83	40	0.1
	0600			27	1009	NE	10	04	0.7	3	80	58	0.2
	1200			30	1009	NW	09	08	0.6	3	85	32	0.2
	1800			28	1008	NE	10	05	0.7	3	80	36	0.2
21-10-25 (Tuesday)	0001	30	27	28	1010	NE	10	05	0.7	3	88	58	0.2
	0600			30	1009	NE	10	04	0.7	3	85	32	0.2
	1200			30	1009	NW	07	03	0.7	3	80	36	0.2
	1800			27	1008	NE	10	05	0.7	3	85	43	0.1
22-10-25 (Wednesday)	0001	30	27	28	1009	NE	10	05	0.7	3	88	58	0.2
	0600			29	1009	NE	10	04	0.7	3	85	32	0.2
	1200			30	1009	NW	07	03	0.7	3	80	36	0.2
	1800			29	1008	NE	10	05	0.7	3	85	43	0.1
23-10-25 (Thursday)	0001	30	27	26	1009	NE	10	05	0.8	3	88	58	0.2
	0600			29	1010	NE	10	04	0.7	3	85	32	0.2
	1200			30	1009	NW	07	03	0.7	3	80	36	0.2
	1800			29	1008	NE	10	05	0.8	3	85	31	0.1

20 Oct 2025

21 Oct 2025

22 Oct 2025

23 Oct 2025



Significant wave height (m)



MARINE WEATHER FORECAST (20 to 27 Oct 2025)

PAYRA FAIRWAY (21° 22' N, 090° 6' E)



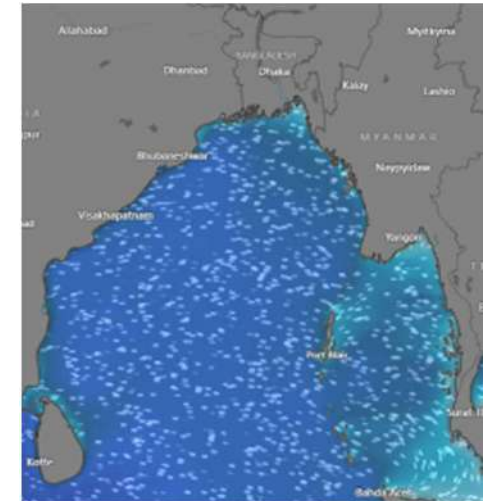
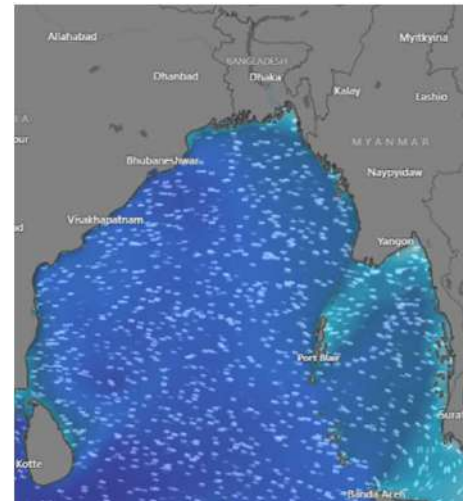
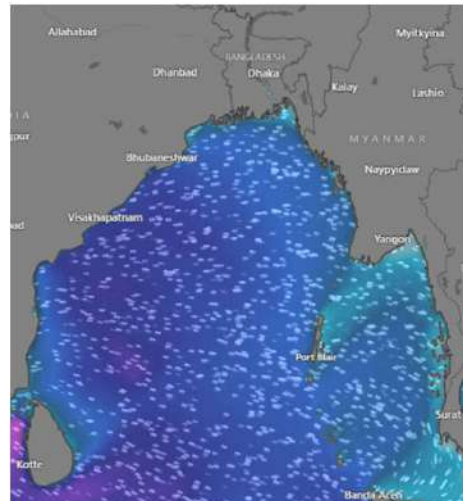
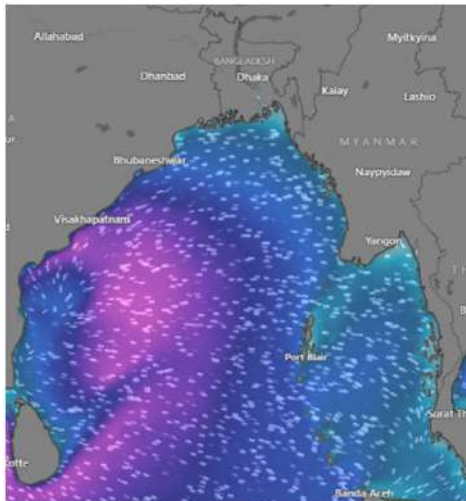
Date	Time	Air Temp (°C)		Sea Surface Temp (°C)	Baro Pressure (mbar)	Wind Direction	Wind Spd (kts)		Wave Ht (m)	Sea State	Humidity (%)	Prob of Rain (%)	Amount of Rain (mm)
		Max	Min				Gusting	Avg					
24-10-25 (Friday)	0001	30	27	28	1009	NE	10	05	0.7	3	88	58	0.2
	0600			30	1009	NE	10	04	0.7	3	85	32	0.2
	1200			30	1009	NW	07	03	0.7	3	80	36	0.2
	1800			27	1010	NE	10	05	0.7	3	85	43	0.1
25-10-25 (Saturday)	0001	30	27	28	1009	NE	10	05	0.7	3	89	75	0.3
	0600			30	1009	NE	10	04	0.7	3	85	75	0.4
	1200			30	1009	NW	07	03	0.7	3	80	81	0.2
	1800			27	1008	NE	10	05	0.7	3	75	76	0.1
26-10-25 (Sunday)	0001	30	27	28	1009	NE	10	05	0.7	3	85	75	0.3
	0600			30	1010	NE	10	04	0.6	3	85	75	0.4
	1200			30	1009	NW	07	03	0.6	3	80	81	0.2
	1800			27	1008	NE	10	05	0.7	3	75	76	0.1
27-10-25 (Monday)	0001	30	27	28	1010	NE	10	05	0.6	3	85	75	0.3
	0600			30	1009	NE	10	04	0.7	3	84	75	0.4
	1200			30	1010	NW	07	03	0.7	3	82	65	0.2
	1800			27	1008	NE	10	05	0.8	3	81	73	0.4

24 Oct 2025

25 Oct 2025

26 Oct 2025

27 Oct 2025



Significant wave height (m)



MARINE WEATHER FORECAST (20 to 27 Oct 2025) MONGLA FAIRWAY (21° 26' N, 089° 34' E)



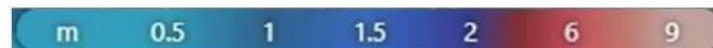
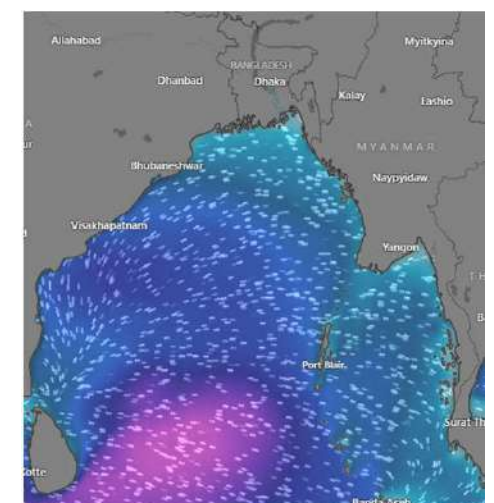
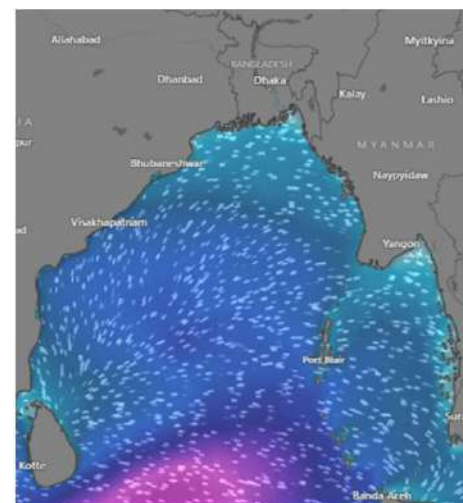
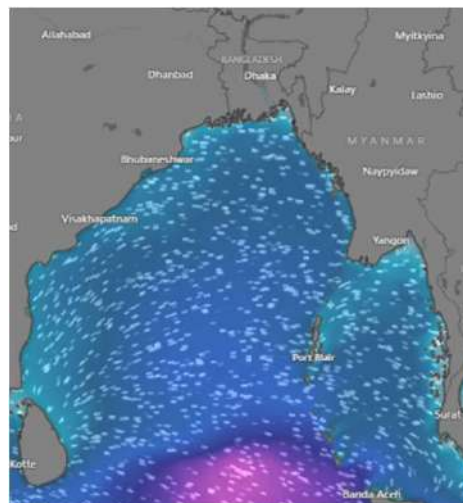
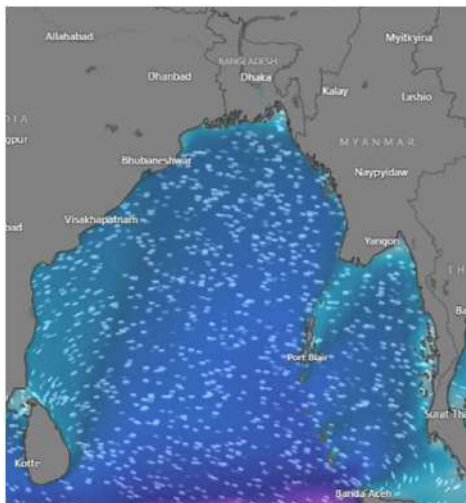
Date	Time	Air Temp (°C)		Sea Surface Temp (°C)	Baro Pressure (mbar)	Wind Direction	Wind Spd (kts)		Wave Ht (m)	Sea State	Humidity (%)	Prob of Rain (%)	Amount of Rain (mm)
		Max	Min				Gusting	Avg					
20-10-25 (Monday)	0001	30	27	30	1008	NNE	11	08	1.2	3	80	36	0.2
	0600			27	1008	WNW	10	05	1.4	4	88	58	0.2
	1200			30	1010	NW	09	04	1.5	4	85	32	0.2
	1800			28	1008	NNE	10	05	1.5	4	80	36	0.2
21-10-25 (Tuesday)	0001	30	27	28	1008	NNE	11	08	1.2	3	88	58	0.2
	0600			30	1008	WNW	10	05	1.4	4	85	32	0.2
	1200			30	1009	NW	09	04	1.5	4	80	36	0.2
	1800			27	1010	NNE	10	05	1.5	4	85	43	0.1
22-10-25 (Wednesday)	0001	30	27	28	1008	NNE	11	08	1.2	3	88	58	0.2
	0600			29	1010	WNW	10	05	1.4	4	85	32	0.2
	1200			30	1009	NW	09	04	1.5	4	80	36	0.2
	1800			29	1008	NNE	10	05	1.5	4	85	43	0.1
23-10-25 (Thursday)	0001	30	27	26	1010	NNE	11	08	1.2	3	88	58	0.2
	0600			29	1008	WNW	10	05	1.4	4	85	32	0.2
	1200			30	1010	NW	09	04	1.5	4	80	36	0.2
	1800			29	1008	NNE	10	05	1.5	4	85	43	0.1

20 Oct 2025

21 Oct 2025

22 Oct 2025

23 Oct 2025



Significant wave height (m)



MARINE WEATHER FORECAST (20 to 27 Oct 2025)

MONGLA FAIRWAY (21° 26' N, 089° 34' E)



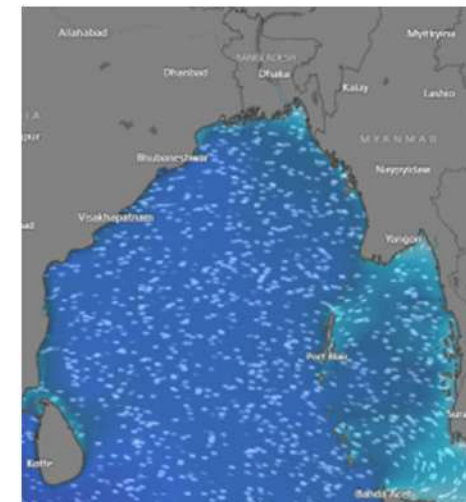
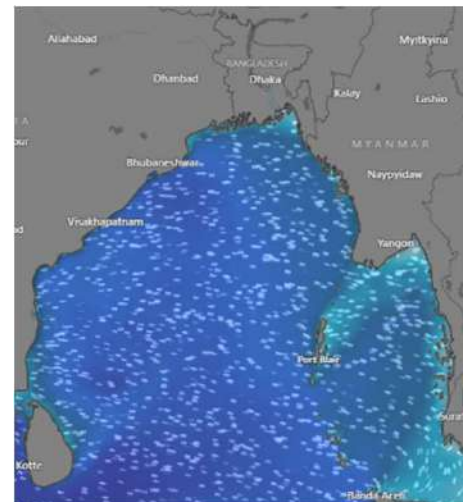
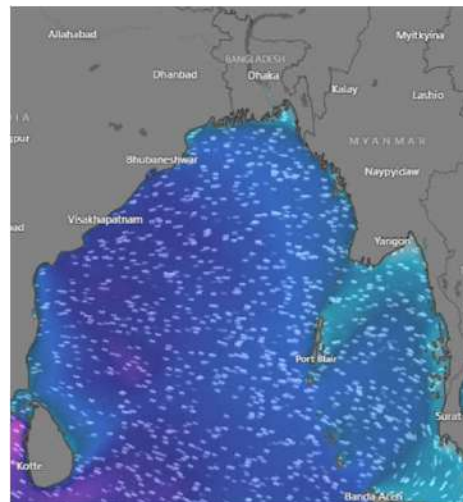
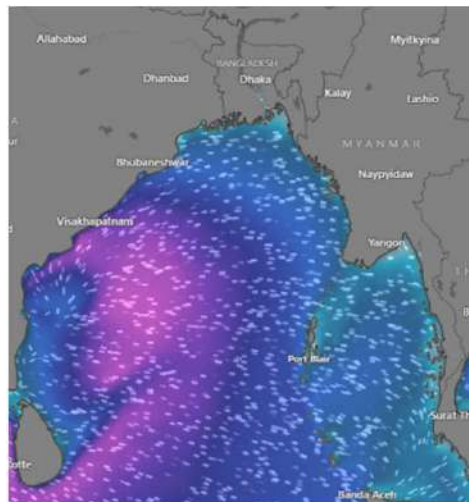
Date	Time	Air Temp (°C)		Sea Surface Temp (°C)	Baro Pressure (mbar)	Wind Direction	Wind Spd (kts)		Wave Ht (m)	Sea State	Humidity (%)	Prob of Rain (%)	Amount of Rain (mm)
		Max	Min				Gusting	Avg					
24-10-25 (Friday)	0001	30	27	28	1008	NNE	11	08	1.2	3	88	58	0.2
	0600			30	1008	WNW	10	05	1.4	4	85	32	0.2
	1200			30	1010	NW	09	04	1.5	4	80	36	0.2
	1800			27	1008	NNE	10	05	1.5	4	85	43	0.1
25-10-25 (Saturday)	0001	30	27	28	1008	NNE	11	08	1.2	3	88	71	0.3
	0600			30	1010	WNW	10	05	1.4	4	91	75	0.4
	1200			30	1009	NW	09	04	1.5	4	85	75	0.4
	1800			27	1008	NNE	10	05	1.5	4	80	81	0.2
26-10-25 (Sunday)	0001	30	27	28	1010	NNE	11	08	1.2	3	75	76	0.1
	0600			30	1010	WNW	10	05	1.4	4	85	75	0.3
	1200			30	1009	NW	09	04	1.5	4	84	75	0.4
	1800			27	1010	NNE	10	05	1.5	4	75	76	0.1
27-10-25 (Monday)	0001	30	27	28	1008	NNE	11	08	1.2	3	85	75	0.3
	0600			30	1010	WNW	10	05	1.4	4	84	75	0.4
	1200			30	1009	NW	09	04	1.5	4	82	65	0.2
	1800			27	1008	NNE	10	05	1.5	4	81	73	0.3

24 Oct 2025

25 Oct 2025

26 Oct 2025

27 Oct 2025



Significant wave height (m)



MARINE WEATHER FORECAST (20 to 27 Oct 2025) OUTER EEZ (18° 48' N, 090° 30' E)



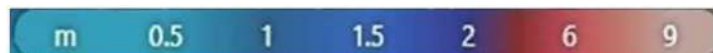
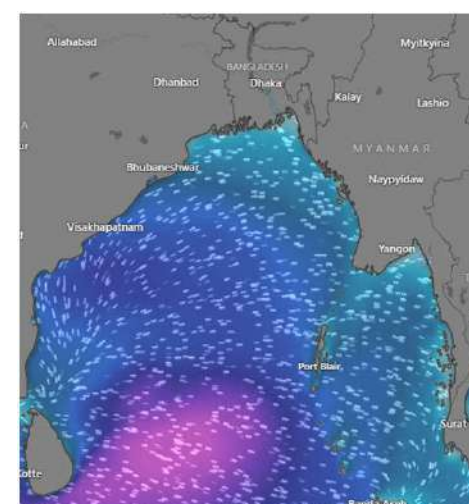
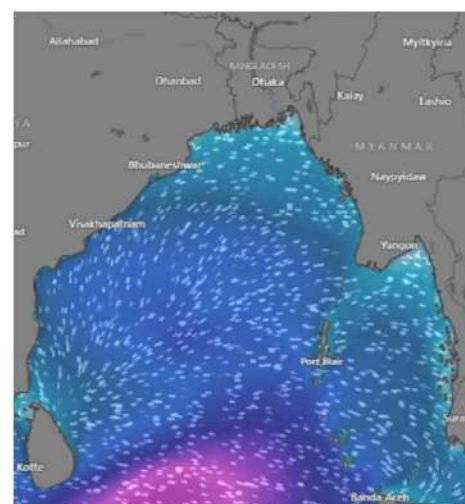
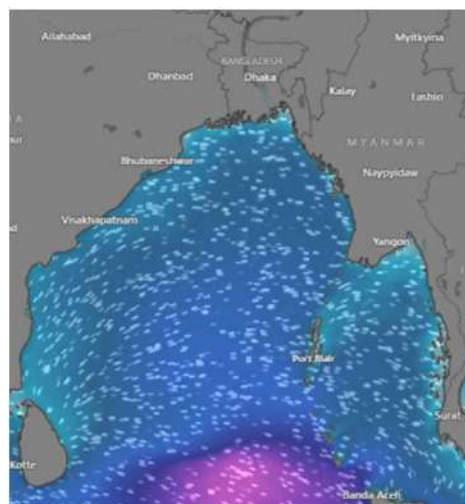
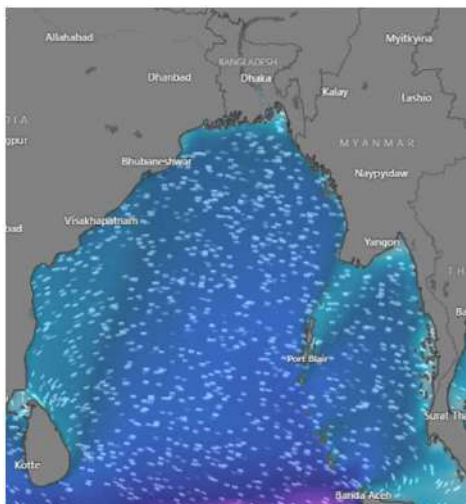
Date	Time	Air Temp (°C)		Sea Surface Temp (°C)	Baro Pressure (mbar)	Wind Direction	Wind Spd (kts)		Wave Ht (m)	Sea State	Humidity (%)	Prob of Rain (%)	Amount of Rain (mm)
		Max	Min				Gusting	Avg					
20-10-25 (Monday)	0001	30	27	30	1009	WNW	15	11	1.1	3	83	38	0.2
	0600			27	1010	NW	13	08	1.1	3	88	58	0.2
	1200			30	1008	NNE	10	05	1.0	3	85	32	0.2
	1800			28	1009	NE	13	08	1.0	3	80	36	0.2
21-10-25 (Tuesday)	0001	30	27	28	1010	WNW	15	11	0.8	3	88	58	0.2
	0600			30	1010	NW	13	08	0.9	3	85	32	0.2
	1200			30	1008	NNE	10	05	0.9	3	80	36	0.2
	1800			27	1009	NE	13	08	0.8	3	85	44	0.1
22-10-25 (Wednesday)	0001	30	27	28	1009	WNW	15	11	0.8	3	88	58	0.2
	0600			29	1008	NW	13	08	0.9	3	85	32	0.2
	1200			30	1008	NNE	10	05	0.8	3	80	36	0.2
	1800			29	1010	NE	13	08	0.8	3	85	43	0.1
23-10-25 (Thursday)	0001	30	27	26	1009	WNW	15	11	1.1	3	90	55	0.2
	0600			29	1010	NW	13	08	1.0	3	85	32	0.2
	1200			30	1010	NNE	10	05	1.0	3	80	36	0.2
	1800			29	1009	NE	13	08	1.0	3	87	46	0.2

20 Oct 2025

21 Oct 2025

22 Oct 2025

23 Oct 2025



Significant wave height (m)



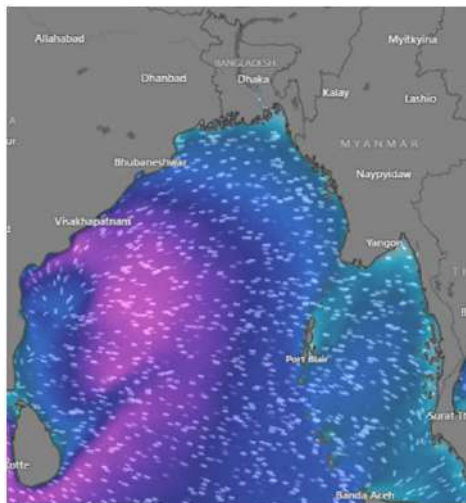
MARINE WEATHER FORECAST (20 to 27 Oct 2025)

OUTER EEZ (18° 48' N, 090° 30' E)

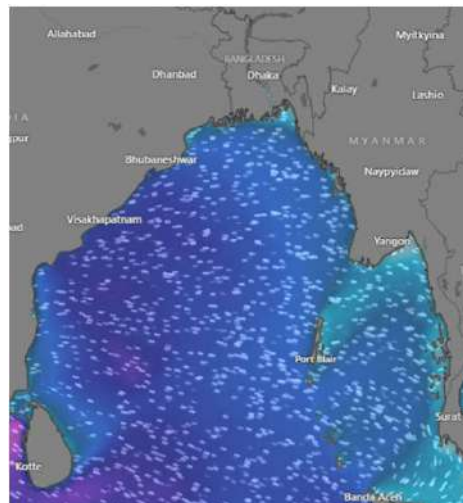


Date	Time	Air Temp (°C)		Sea Surface Temp (°C)	Baro Pressure (mbar)	Wind Direction	Wind Spd (kts)		Wave Ht (m)	Sea State	Humidity (%)	Prob of Rain (%)	Amount of Rain (mm)
		Max	Min				Gusting	Avg					
24-10-25 (Friday)	0001	30	27	28	1009	WNW	13	10	1.5	4	90	58	0.2
	0600			30	1010	NW	13	08	1.5	4	85	32	0.2
	1200			30	1010	NNE	10	05	1.4	4	80	36	0.2
	1800			27	1009	NE	13	08	1.5	4	85	43	0.1
25-10-25 (Saturday)	0001	30	27	28	1009	WNW	15	11	1.5	4	88	71	0.3
	0600			30	1010	NW	13	08	1.5	4	91	75	0.4
	1200			30	1008	NNE	10	05	1.4	4	80	81	0.2
	1800			27	1009	NE	13	08	1.5	4	75	76	0.1
26-10-25 (Sunday)	0001	30	27	28	1009	WNW	15	11	1.5	4	85	75	0.3
	0600			30	1010	NW	13	08	1.5	4	88	75	0.4
	1200			30	1008	NNE	10	05	1.4	4	82	65	0.2
	1800			27	1010	NE	13	08	1.5	4	81	73	0.3
27-10-25 (Monday)	0001	30	27	28	1009	WNW	15	11	1.5	4	85	75	0.3
	0600			30	1010	NW	13	08	1.5	4	84	75	0.4
	1200			30	1010	NNE	10	05	1.4	4	82	65	0.2
	1800			27	1009	NE	13	08	1.5	4	81	70	0.3

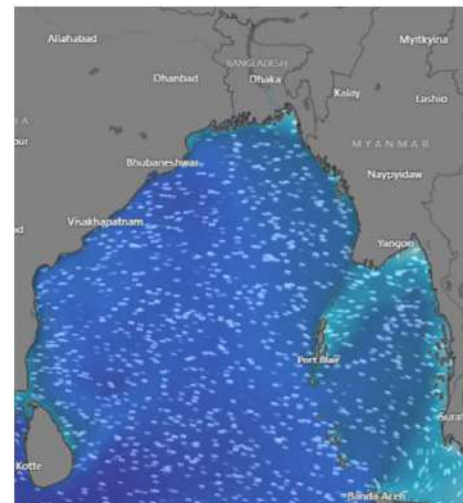
24 Oct 2025



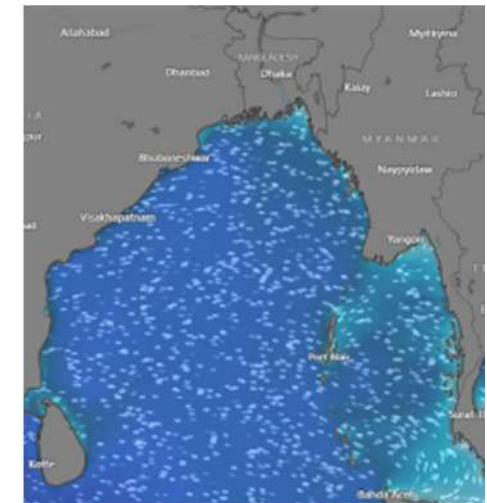
25 Oct 2025



26 Oct 2025



27 Oct 2025



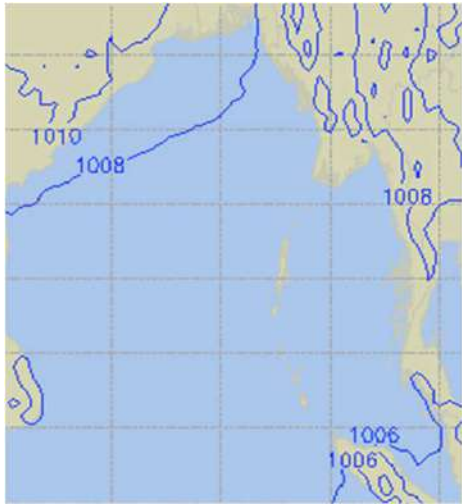
Significant wave height (m)



PREDICTED SURFACE PRESSURE FORECAST (20 to 26 Oct 2025)



20 Oct 2025



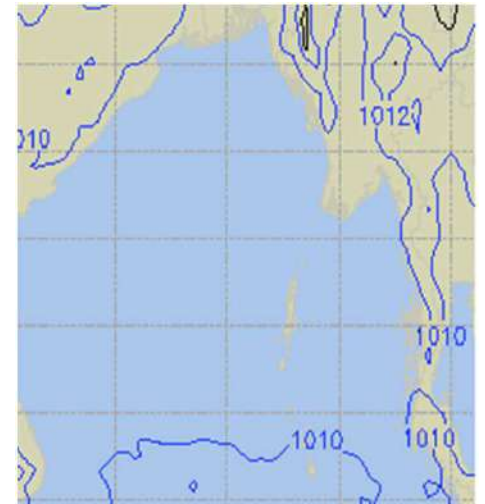
21 Oct 2025



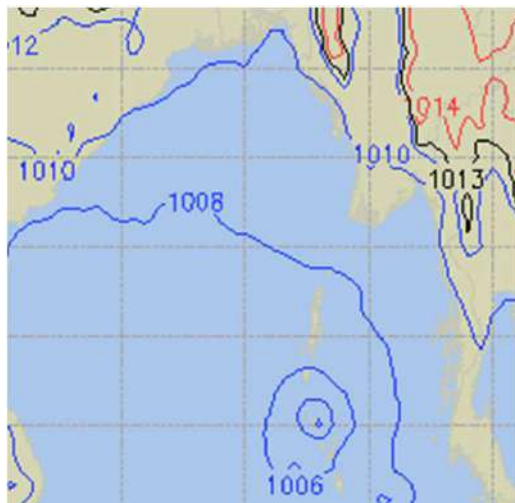
22 Oct 2025



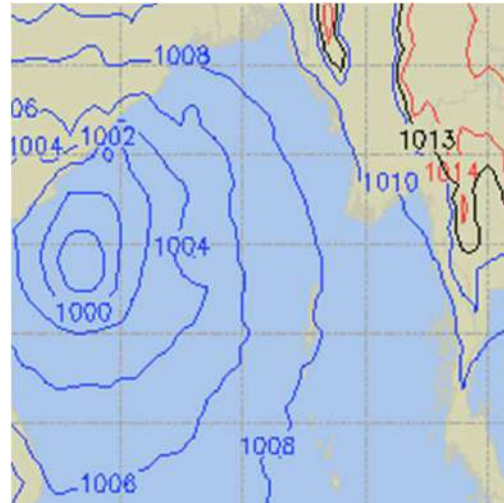
23 Oct 2025



24 Oct 2025



25 Oct 2025



26 Oct 2025

