

MARINE WEATHER FORECAST- NEAR AUTHORITY BUOY (Lat 22° 12' N, Long 091° 38' E)

DATE : 20 to 27 May 2024

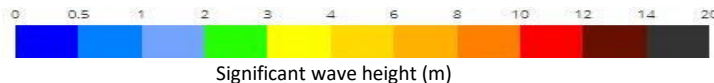
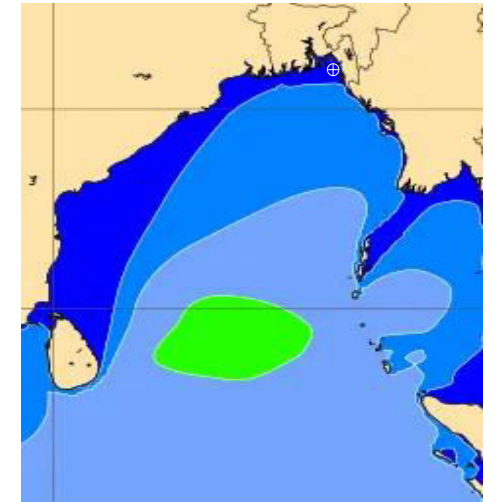
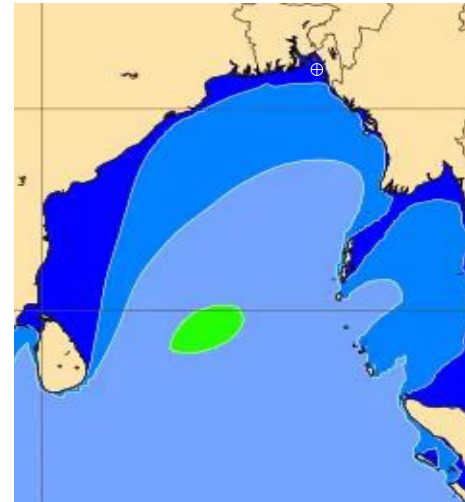
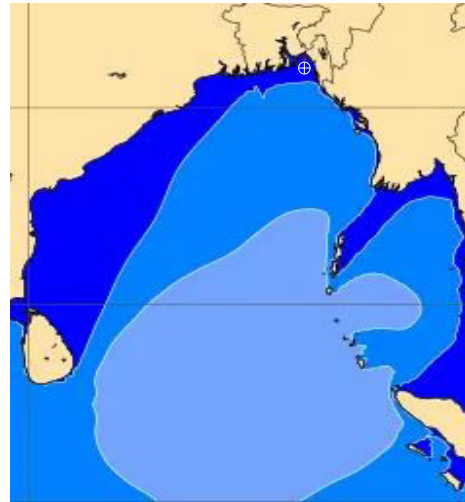
Date	Time	Max Wind Spd (kts)	Wind Direction	Wave Ht (m)	Sea State	Baro Pressure	Air Temp		Sea Surface Temp	Humidity (%)	Prob of Rain (%)	Sea State	Wave Ht (m)
							Max	Min					
20-05-24	0001	5	WSW	0.1	1	1005	32	24	29	83%	181% (0.0 mm)	0	0
	0600	7	SE	0.1	1	1006			29	98%	13% (0.0 mm)	1	0 - 0.1
	1200	6	WSW	0.1	1	1006			30	76%	18% (0.0 mm)	2	0.1 - 0.5
	1800	14	SW	0.3	2	1001			30	85%	19% (0.0 mm)	3	0.5 - 1.25
21-05-24	0001	13	NNW	0.3	2	1006	32	24	29	87%	15% (0.0 mm)	4	1.25 - 2.5
	0600	8	SSE	0.1	1	1005			29	94%	14% (0.0 mm)	5	2.5 - 4.0
	1200	7	W	0.1	1	1005			30	75%	16% (0.0 mm)	6	4.0 - 6.0
	1800	9	SW	0.2	2	1001			30	86%	15% (0.0 mm)	7	6.0 - 9.0
22-05-24	0001	11	SW	0.2	2	1005	32	24	29	88%	18% (0.0 mm)	8	9.0 - 14.0
	0600	9	ESE	0.1	1	1006			29	94%	16% (0.0 mm)	9	Over 14.0
	1200	7	WSW	0.1	1	1004			30	76%	15% (0.0 mm)		
	1800	9	W	0.2	2	1001			30	88%	13% (0.0 mm)		
23-05-24	0001	10	SSE	0.2	2	1003	32	24	29	86%	15% (0.0 mm)		
	0600	5	ESE	0.1	1	1003			29	95%	14% (0.0 mm)		
	1200	7	SW	0.1	1	1004			30	73%	15% (0.0 mm)		
	1800	10	WSW	0.2	2	1001			30	85%	18% (0.0 mm)		

20 May 24 Mon (Probability 98%)

21 May 24 Tue (Probability 95%)

22 May 24 Wed (Probability 90%)

23 May 24 Thu (Probability 80%)

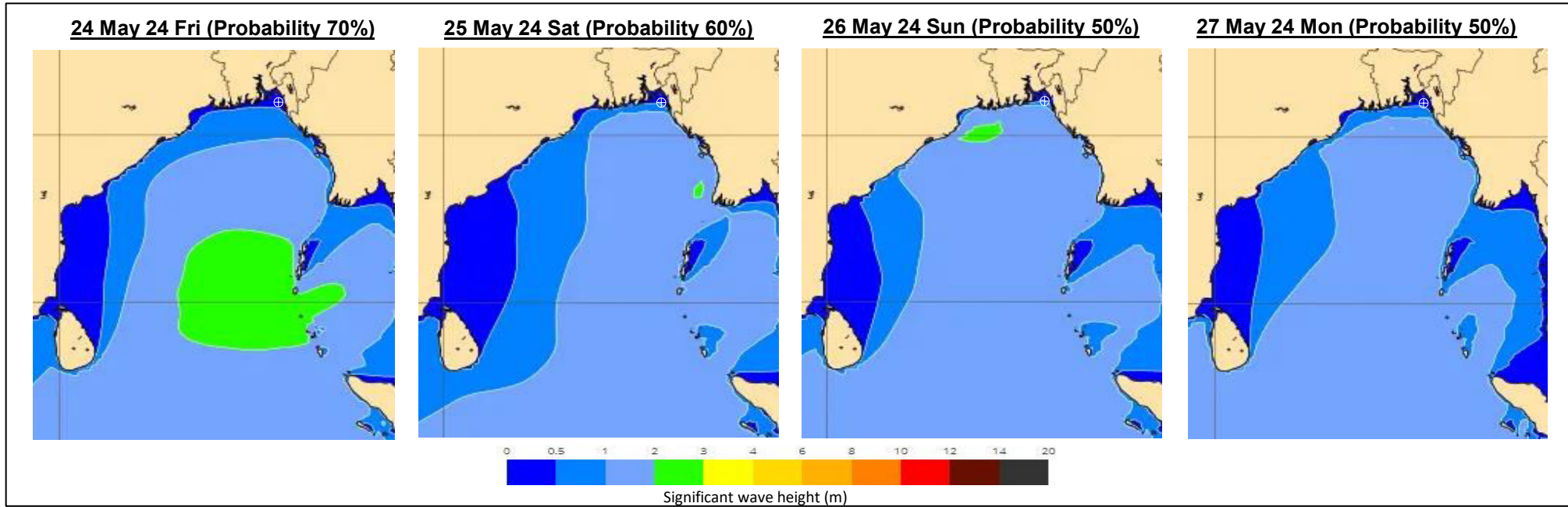


Significant wave height (m)

MARINE WEATHER FORECAST- NEAR AUTHORITY BUOY (Lat 22° 12'N, Long 091° 38'E)

DATE : 20 to 27 May 2024

Date	Time	Max Wind Spd (kts)	Wind Direction	Wave Ht (m)	Sea State	Baro Pressure	Air Temp		Sea Surface Temp	Humidity (%)	Prob of Rain (%)	Sea State	Wave Ht (m)
							Max	Min					
24-05-24	0001	6	ENE	0.1	1	1001	32	24	30	88%	19% (0.0 mm)	0	0
	0600	7	NNE	0.1	1	1000			29	97%	18% (0.0 mm)	1	0 - 0.1
	1200	7	ENE	0.1	1	1000			31	76%	19% (0.0 mm)	2	0.1 - 0.5
	1800	5	SSE	0.1	1	999			31	87%	18% (0.0 mm)	3	0.5 - 1.25
25-05-24	0001	7	E	0.1	1	999	31	23	30	88%	35% (0.0 mm)	4	1.25 - 2.5
	0600	15	E	0.3	2	998			30	98%	36% (0.0 mm)	5	2.5 - 4.0
	1200	22	ESE	0.4	2	999			31	79%	45% (0.0 mm)	6	4.0 - 6.0
	1800	24	SSE	0.5	2	998			31	88%	52% (0.0 mm)	7	6.0 - 9.0
26-05-24	0001	33	SE	0.6	3	1000	30	23	30	87%	56% (0.0 mm)	8	9.0 - 14.0
	0600	31	SE	0.6	3	1000			30	98%	54% (0.0 mm)	9	Over 14.0
	1200	29	SSE	0.5	2	1002			31	79%	48% (0.0 mm)		
	1800	25	SSE	0.5	2	1000			31	86%	30% (0.0 mm)		
27-05-24	0001	29	SSE	0.4	2	1003	32	24	30	88%	23% (0.0 mm)		
	0600	26	SE	0.4	2	1002			29	97%	19% (0.0 mm)		
	1200	23	SSE	0.4	2	1003			31	79%	18% (0.0 mm)		
	1800	24	SSE	0.4	2	1000			31	88%	19% (0.0 mm)		



MARINE WEATHER FORECAST- 20 NM WEST OF ELEPHANT POINT (Lat 21° 10' N, Long 091° 42' E)

DATE : 20 to 27 May 2024

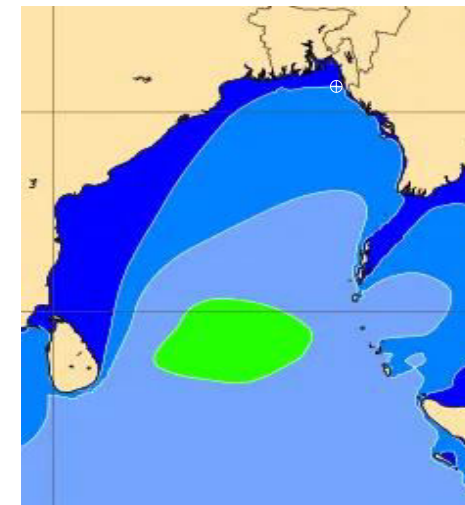
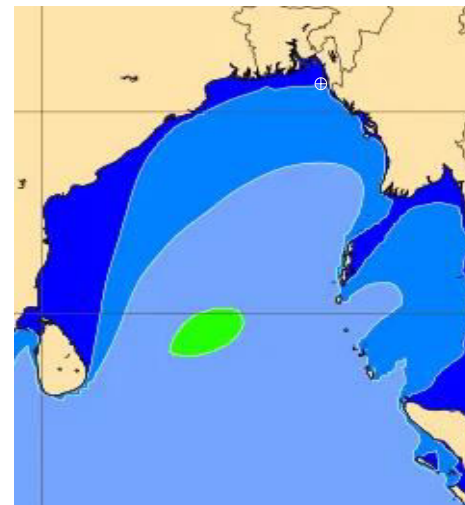
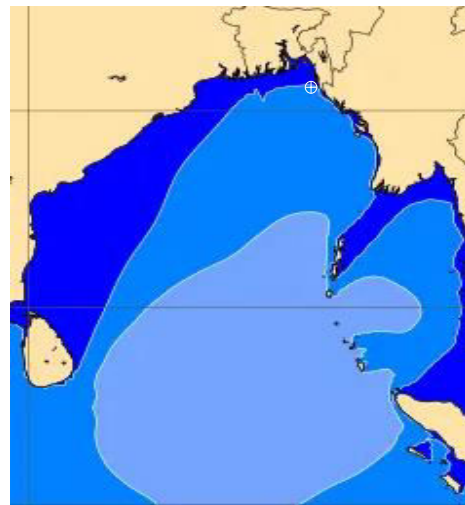
Date	Time	Max Wind Spd (kts)	Wind Direction	Wave Ht (m)	Sea State	Baro Pressure	Air Temp		Sea Surface Temp	Humidity (%)	Prob of Rain (%)	Sea State	Wave Ht (m)
							Max	Min					
20-05-24	0001	6	W	0.7	3	1005	32	24	30	87%	16% (0.0 mm)	0	0
	0600	5	S	0.6	3	1005			29	96%	17% (0.0 mm)	1	0 - 0.1
	1200	6	WNW	0.6	3	1006			30	78%	18% (0.0 mm)	2	0.1 - 0.5
	1800	14	WSW	0.6	3	1002			30	87%	16% (0.0 mm)	3	0.5 - 1.25
21-05-24	0001	9	W	0.7	3	1005	32	24	30	85%	15% (0.0 mm)	4	1.25 - 2.5
	0600	5	SSE	0.7	3	1005			29	96%	14% (0.0 mm)	5	2.5 - 4.0
	1200	5	WSW	0.6	3	1006			30	78%	18% (0.0 mm)	6	4.0 - 6.0
	1800	10	W	0.7	3	1002			30	87%	17% (0.0 mm)	7	6.0 - 9.0
22-05-24	0001	9	SW	0.6	3	1005	32	24	30	86%	16% (0.0 mm)	8	9.0 - 14.0
	0600	4	S	0.7	3	1004			29	98%	15% (0.0 mm)	9	Over 14.0
	1200	5	WSW	0.7	3	1005			30	77%	17% (0.0 mm)		
	1800	6	WNW	0.7	3	1001			30	86%	18% (0.0 mm)		
23-05-24	0001	6	SSE	0.7	3	1003	32	24	30	88%	16% (0.0 mm)		
	0600	5	SE	0.7	3	1003			29	97%	14% (0.0 mm)		
	1200	7	ENE	0.7	3	1004			30	76%	18% (0.0 mm)		
	1800	10	SSW	0.8	3	1001			30	88%	17% (0.0 mm)		

20 May 24 Mon (Probability 98%)

21 May 24 Tue (Probability 95%)

22 May 24 Wed (Probability 90%)

23 May 24 Thu (Probability 80%)



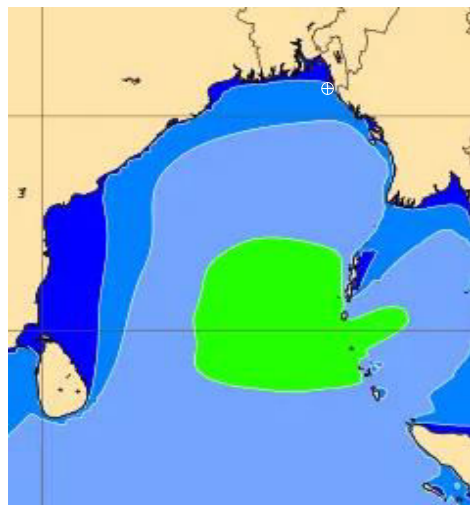
Significant wave height (m)

MARINE WEATHER FORECAST- 20 NM WEST OF ELEPHANT POINT (Lat 21° 10' N, Long 091° 42' E)

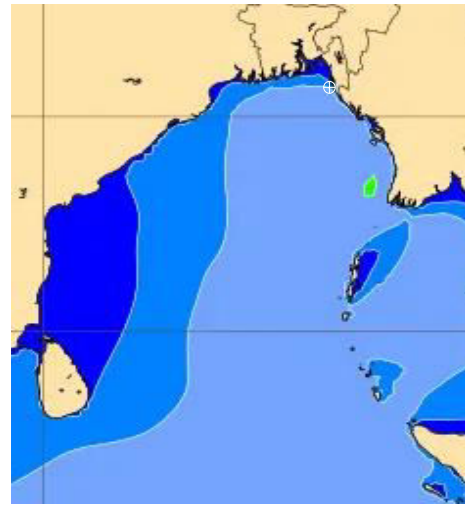
DATE : 20 to 27 May 2024

Date	Time	Max Wind Spd (kts)	Wind Direction	Wave Ht (m)	Sea State	Baro Pressure	Air Temp		Sea Surface Temp	Humidity (%)	Prob of Rain (%)	Sea State	Wave Ht (m)
							Max	Min					
24-05-24	0001	8	ENE	1.2	3	1000	32	24	30	89%	20% (0.0 mm)	0	0
	0600	12	NE	1.3	4	998			30	98%	21% (0.0 mm)	1	0 - 0.1
	1200	9	ESE	2.3	4	998			31	78%	23% (0.0 mm)	2	0.1 - 0.5
	1800	24	ESE	2.8	5	997			31	86%	19% (0.0 mm)	3	0.5 - 1.25
25-05-24	0001	36	ESE	3.2	5	997	31	23	30	88%	37% (0.0 mm)	4	1.25 - 2.5
	0600	40	ESE	4.0	5	995			30	97%	38% (0.0 mm)	5	2.5 - 4.0
	1200	41	ESE	4.3	6	998			31	79%	46% (0.0 mm)	6	4.0 - 6.0
	1800	42	SE	4.2	6	997			31	88%	59% (0.0 mm)	7	6.0 - 9.0
26-05-24	0001	40	SE	4.0	5	999	30	23	29	87%	58% (0.0 mm)	8	9.0 - 14.0
	0600	38	SE	3.5	5	1000			29	99%	57% (0.0 mm)	9	Over 14.0
	1200	40	SE	3.5	5	1002			30	78%	49% (0.0 mm)		
	1800	34	SE	3.3	5	1000			29	86%	36% (0.0 mm)		
27-05-24	0001	32	SE	3.1	5	1003	32	24	30	89%	28% (0.0 mm)		
	0600	30	SE	3.0	5	1002			30	98%	17% (0.0 mm)		
	1200	28	SSE	2.9	5	1003			31	77%	16% (0.0 mm)		
	1800	29	SE	2.9	5	1000			30	88%	18% (0.0 mm)		

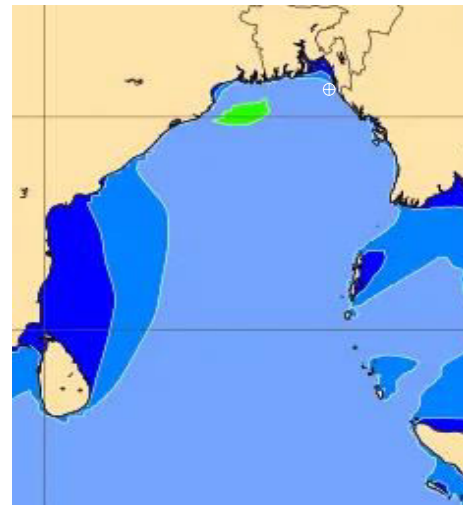
24 May 24 Fri (Probability 70%)



25 May 24 Sat (Probability 60%)



26 May 24 Sun (Probability 50%)



27 May 24 Mon (Probability 50%)



Significant wave height (m)

MARINE WEATHER FORECAST- 15 NM WEST OF ST. MARTIN'S LIGHT HOUSE (Lat 20° 37' N, Long 092° 03' E)

DATE : 20 to 27 May 2024

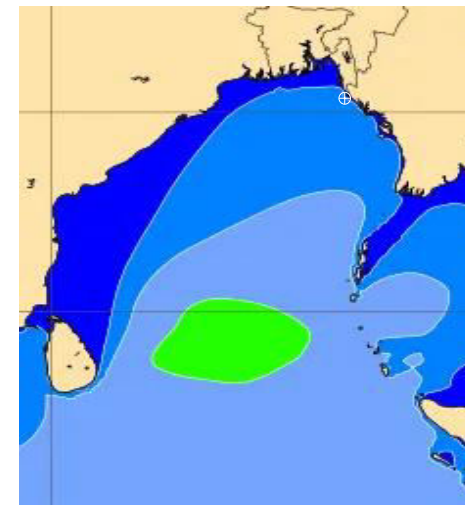
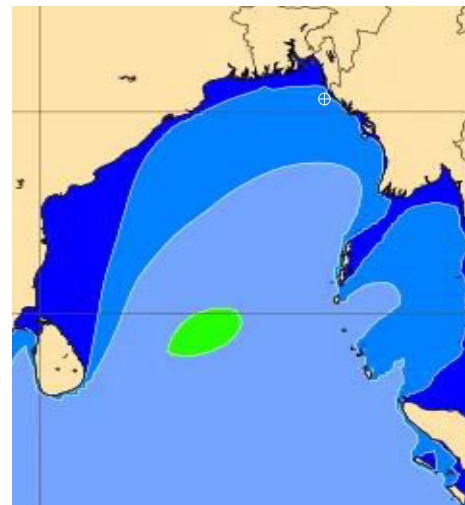
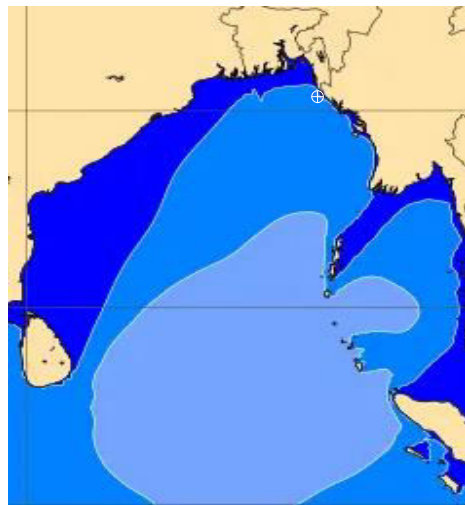
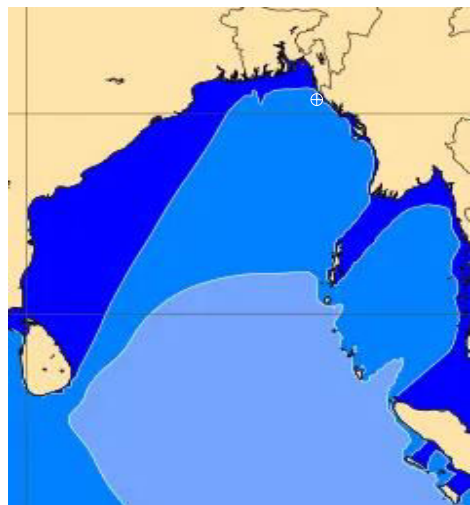
Date	Time	Max Wind Spd (kts)	Wind Direction	Wave Ht (m)	Sea State	Baro Pressure	Air Temp		Sea Surface Temp	Humidity (%)	Prob of Rain(%)	Sea State	Wave Ht (m)
							Max	Min					
20-05-24	0001	8	W	0.8	3	1005	32	24	30	85%	17% (0.0 mm)	0	0
	0600	6	NW	0.8	3	1005			30	94%	15% (0.0 mm)	1	0 - 0.1
	1200	6	W	0.7	3	1006			31	73%	18% (0.0 mm)	2	0.1 - 0.5
	1800	14	W	0.9	3	1002			31	86%	16% (0.0 mm)	3	0.5 - 1.25
21-05-24	0001	9	W	0.8	3	1006	32	24	30	84%	18% (0.0 mm)	4	1.25 - 2.5
	0600	4	WNW	0.8	3	1005			30	95%	15% (0.0 mm)	5	2.5 - 4.0
	1200	6	W	0.8	3	1006			31	74%	14% (0.0 mm)	6	4.0 - 6.0
	1800	13	W	0.9	3	1002			31	88%	16% (0.0 mm)	7	6.0 - 9.0
22-05-24	0001	6	SW	0.9	3	1006	32	24	30	86%	15% (0.0 mm)	8	9.0 - 14.0
	0600	4	W	0.8	3	1004			30	95%	15% (0.0 mm)	9	Over 14.0
	1200	9	N	0.7	3	1005			31	74%	16% (0.0 mm)		
	1800	11	W	0.9	3	1001			31	88%	15% (0.0 mm)		
23-05-24	0001	7	E	0.9	3	1003	32	24	30	87%	14% (0.0 mm)		
	0600	8	ESE	0.9	3	1002			30	94%	18% (0.0 mm)		
	1200	9	ESE	0.9	3	1003			31	78%	17% (0.0 mm)		
	1800	12	SSE	0.9	3	1001			31	88%	13% (0.0 mm)		

20 May 24 Mon (Probability 98%)

21 May 24 Tue (Probability 95%)

22 May 24 Wed (Probability 90%)

23 May 24 Thu (Probability 80%)



0 0.5 1 2 3 4 6 8 10 12 14 20



Significant wave height (m)

MARINE WEATHER FORECAST- 15 NM WEST OF ST. MARTIN'S LIGHT HOUSE (Lat 20° 37' N, Long 092° 03' E)

DATE : 20 to 27 May 2024

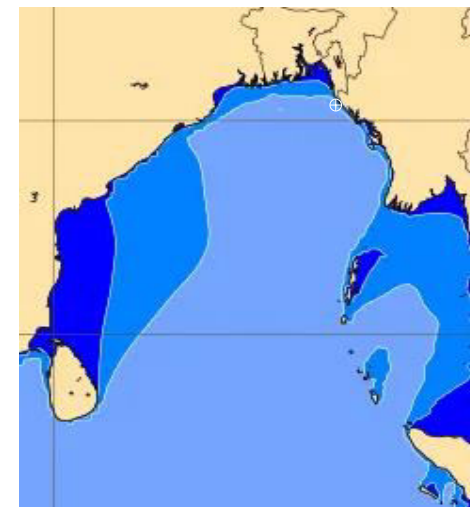
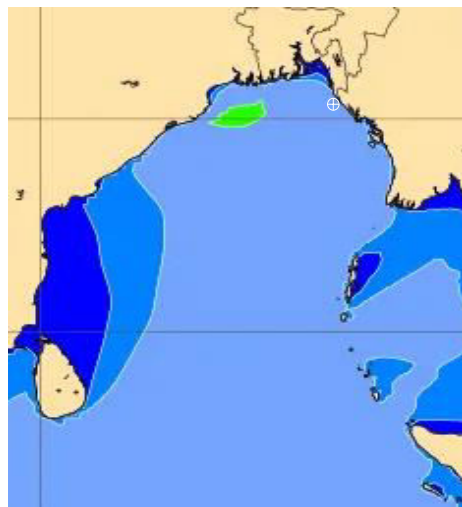
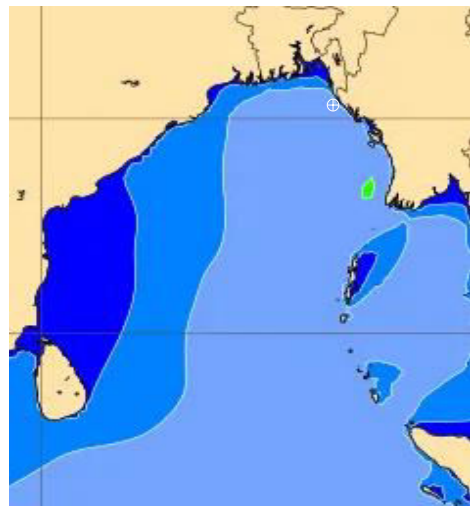
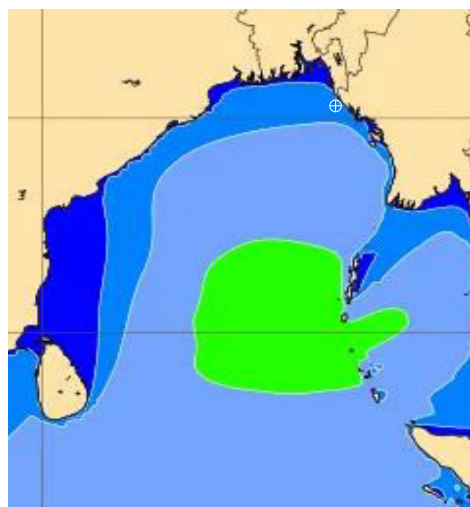
Date	Time	Max Wind Spd (kts)	Wind Direction	Wave Ht (m)	Sea State	Baro Pressure	Air Temp		Sea Surface Temp	Humidity (%)	Prob of Rain (%)	Sea State	Wave Ht (m)
							Max	Min					
24-05-24	0001	10	ESE	1.8	4	1001	32	24	30	88%	20% (0.0 mm)	0	0
	0600	19	E	2.0	4	998			30	99%	21% (0.0 mm)	1	0 - 0.1
	1200	32	ENE	2.2	4	999			31	77%	23% (0.0 mm)	2	0.1 - 0.5
	1800	37	ESE	3.3	5	997			31	88%	19% (0.0 mm)	3	0.5 - 1.25
25-05-24	0001	46	ESE	5.0	6	996	31	23	30	89%	39% (0.0 mm)	4	1.25 - 2.5
	0600	47	ESE	5.9	6	995			30	99%	38% (0.0 mm)	5	2.5 - 4.0
	1200	48	SE	6.0	6	998			31	78%	47% (0.0 mm)	6	4.0 - 6.0
	1800	43	SE	5.9	6	997			31	87%	59% (0.0 mm)	7	6.0 - 9.0
26-05-24	0001	44	SE	5.1	6	1000	30	23	30	89%	58% (0.0 mm)	8	9.0 - 14.0
	0600	40	SE	4.5	6	999			30	98%	57% (0.0 mm)	9	Over 14.0
	1200	37	SE	4.3	6	1001			31	79%	46% (0.0 mm)		
	1800	36	SE	4.0	5	1001			31	88%	38% (0.0 mm)		
27-05-24	0001	30	SSE	3.8	5	1003	32	24	30	87%	27% (0.0 mm)		
	0600	29	SSE	3.6	5	1002			30	98%	15% (0.0 mm)		
	1200	26	SE	3.4	5	1003			31	79%	18% (0.0 mm)		
	1800	25	SSE	3.4	5	1001			31	88%	16% (0.0 mm)		

24 May 24 Fri (Probability 70%)

25 May 24 Sat (Probability 60%)

26 May 24 Sun (Probability 50%)

27 May 24 Mon (Probability 50%)



Significant wave height (m)

MARINE WEATHER FORECAST- 40 NM ESE OF PAYRA FAIRWAY (Lat 21° 07'N, Long 090° 45'E)

DATE : 20 to 27 May 2024

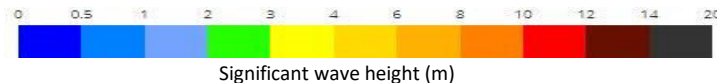
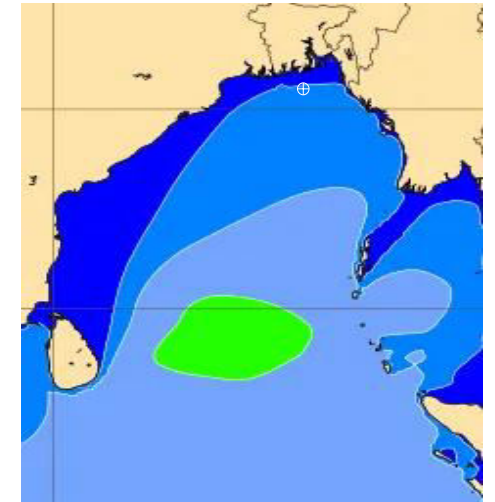
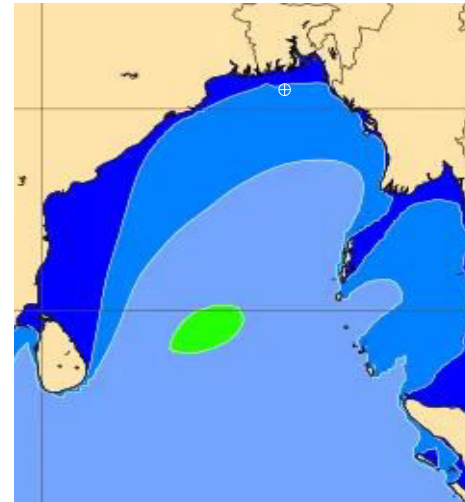
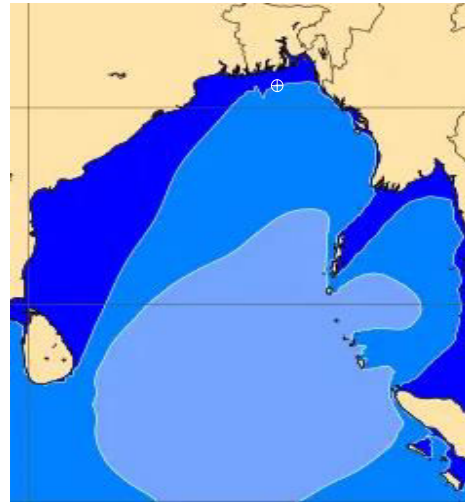
Date	Time	Max Wind Spd (kts)	Wind Direction	Wave Ht (m)	Sea State	Baro Pressure	Air Temp		Sea Surface Temp	Humidity (%)	Prob of Rain (%)	Sea State	Wave Ht (m)
							Max	Min					
20-05-24	0001	9	WSW	0.8	3	1005	34	25	30	87%	16% (0.0 mm)	0	0
	0600	8	SW	0.8	3	1005			30	96%	18% (0.0 mm)	1	0 - 0.1
	1200	7	W	0.8	3	1006			31	78%	17% (0.0 mm)	2	0.1 - 0.5
	1800	11	WSW	0.8	3	1002			31	87%	19% (0.0 mm)	3	0.5 - 1.25
21-05-24	0001	11	WSW	0.9	3	1005	34	25	30	89%	15% (0.0 mm)	4	1.25 - 2.5
	0600	4	SW	0.8	3	1005			30	95%	17% (0.0 mm)	5	2.5 - 4.0
	1200	5	SSW	0.8	3	1006			31	77%	16% (0.0 mm)	6	4.0 - 6.0
	1800	9	SW	0.8	3	1002			31	86%	18% (0.0 mm)	7	6.0 - 9.0
22-05-24	0001	14	SSW	0.8	3	1005	34	25	30	88%	17% (0.0 mm)	8	9.0 - 14.0
	0600	3	SW	0.9	3	1004			30	97%	15% (0.0 mm)	9	Over 14.0
	1200	5	SE	0.9	3	1005			31	78%	16% (0.0 mm)		
	1800	12	SSW	0.9	3	1001			31	89%	12% (0.0 mm)		
23-05-24	0001	10	SE	0.9	3	1003	34	25	30	87%	15% (0.0 mm)		
	0600	9	ESE	0.8	3	1002			30	95%	17% (0.0 mm)		
	1200	8	SE	0.8	3	1003			31	78%	18% (0.0 mm)		
	1800	11	SSW	0.9	3	1001			31	86%	16% (0.0 mm)		

20 May 24 Mon (Probability 98%)

21 May 24 Tue (Probability 95%)

22 May 24 Wed (Probability 90%)

23 May 24 Thu (Probability 80%)



Significant wave height (m)

MARINE WEATHER FORECAST- 40 NM ESE OF PAYRA FAIRWAY (Lat 21° 07' N, Long 090° 45' E)

DATE : 20 to 27 May 2024

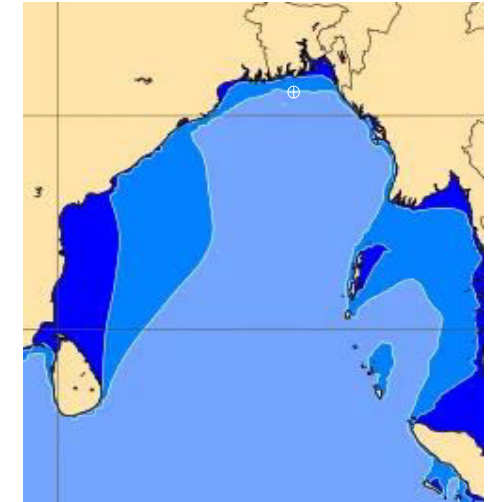
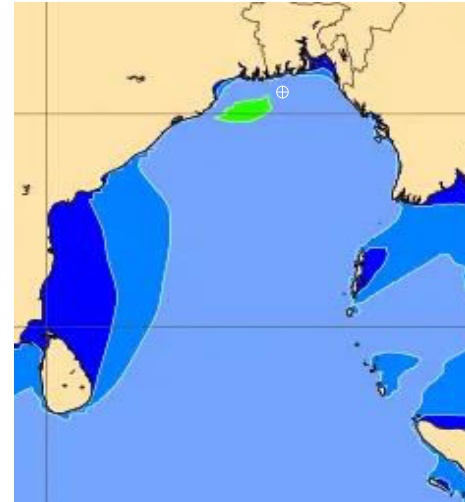
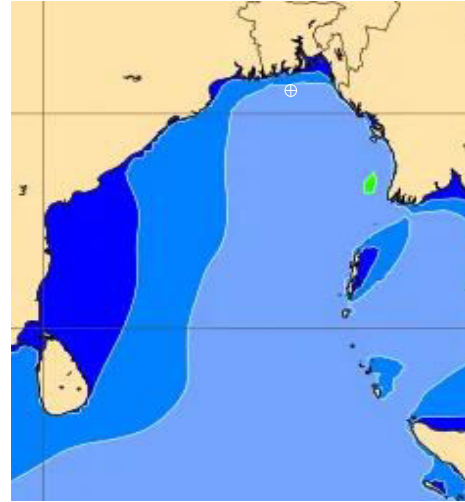
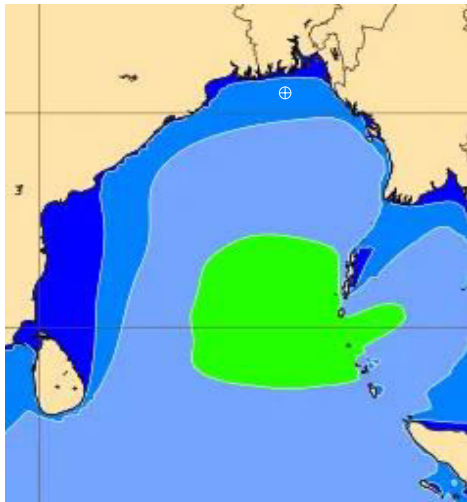
Date	Time	Max Wind Spd (kts)	Wind Direction	Wave Ht (m)	Sea State	Baro Pressure	Air Temp		Sea Surface Temp	Humidity (%)	Prob of Rain (%)	Sea State	Wave Ht (m)
							Max	Min					
24-05-24	0001	8	SE	1.7	4	1001	33	24	30	89%	24% (0.0 mm)	0	0
	0600	15	NE	2.0	4	998			30	98%	22% (0.0 mm)	1	0 - 0.1
	1200	18	E	2.1	4	999			31	79%	23% (0.0 mm)	2	0.1 - 0.5
	1800	36	ESE	3.2	5	996			31	88%	15% (0.0 mm)	3	0.5 - 1.25
25-05-24	0001	46	E	5.4	6	995	33	24	30	89%	34% (0.0 mm)	4	1.25 - 2.5
	0600	54	E	7.0	7	992			30	98%	38% (0.0 mm)	5	2.5 - 4.0
	1200	57	SSE	8.3	7	994			31	77%	47% (0.0 mm)	6	4.0 - 6.0
	1800	44	SSE	7.6	7	992			31	88%	58% (0.0 mm)	7	6.0 - 9.0
26-05-24	0001	43	SE	6.5	7	997	32	24	30	89%	56% (0.0 mm)	8	9.0 - 14.0
	0600	42	SE	5.7	6	998			30	98%	58% (0.0 mm)	9	Over 14.0
	1200	37	SE	5.2	6	1000			31	77%	47% (0.0 mm)		
	1800	34	SE	4.8	6	999			31	88%	36% (0.0 mm)		
27-05-24	0001	29	SSE	4.4	6	1001	33	24	30	89%	28% (0.0 mm)		
	0600	25	SSE	3.9	5	1001			30	98%	17% (0.0 mm)		
	1200	24	SE	3.7	5	1002			31	77%	19% (0.0 mm)		
	1800	26	SSE	3.4	5	1000			31	89%	19% (0.0 mm)		

24 May 24 Fri (Probability 70%)

25 May 24 Sat (Probability 60%)

26 May 24 Sun (Probability 50%)

27 May 24 Mon (Probability 50%)



Significant wave height (m)

MARINE WEATHER FORECAST- 10 NM SOUTH OF MONGLA FAIRWAY (Lat 21° 16'N, Long 089° 34'E)

DATE : 20 to 27 May 2024

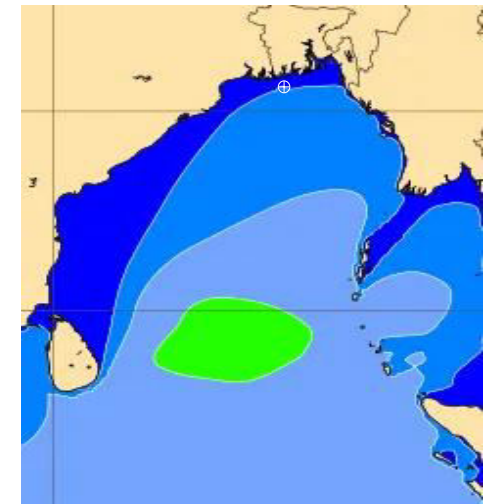
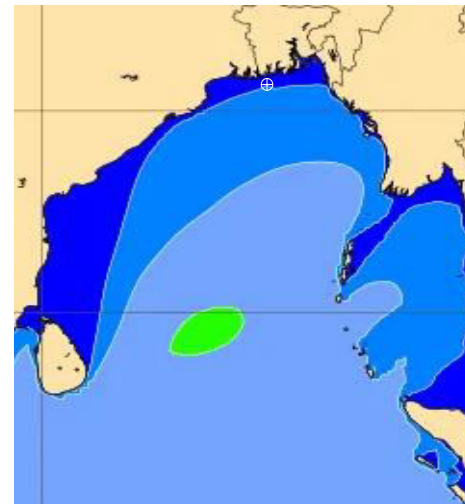
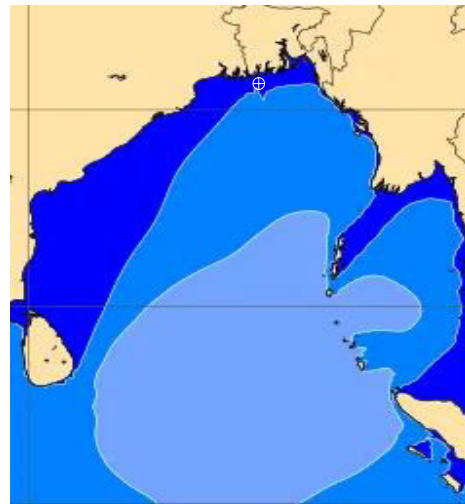
Date	Time	Max Wind Spd (kts)	Wind Direction	Wave Ht (m)	Sea State	Baro Pressure	Air Temp		Sea Surface Temp	Humidity (%)	Prob of Rain (%)	Sea State	Wave Ht (m)
							Max	Min					
20-05-24	0001	13	SW	1.1	3	1004	34	25	30	83%	17% (0.0 mm)	0	0
	0600	14	SW	1.1	3	1003			30	94%	15% (0.0 mm)	1	0 - 0.1
	1200	12	SSW	1.0	3	1004			31	75%	16% (0.0 mm)	2	0.1 - 0.5
	1800	16	SSW	1.1	3	1002			31	86%	18% (0.0 mm)	3	0.5 - 1.25
21-05-24	0001	10	WSW	1.0	3	1005	34	25	30	88%	17% (0.0 mm)	4	1.25 - 2.5
	0600	13	WSW	1.1	3	1004			30	97%	16% (0.0 mm)	5	2.5 - 4.0
	1200	10	SSW	1.0	3	1005			30	75%	18% (0.0 mm)	6	4.0 - 6.0
	1800	9	SSW	1.0	3	1002			30	84%	11% (0.0 mm)	7	6.0 - 9.0
22-05-24	0001	12	WSW	1.1	3	1005	34	25	30	85%	15% (0.0 mm)	8	9.0 - 14.0
	0600	10	SW	1.1	3	1003			30	96%	16% (0.0 mm)	9	Over 14.0
	1200	9	SW	1.0	3	1005			30	75%	18% (0.0 mm)		
	1800	13	SSW	1.1	3	1001			30	84%	14% (0.0 mm)		
23-05-24	0001	12	WSW	1.1	3	1005	34	25	30	88%	18% (0.0 mm)		
	0600	8	SW	1.0	3	1003			30	94%	19% (0.0 mm)		
	1200	9	SW	1.0	3	1005			30	75%	16% (0.0 mm)		
	1800	12	SSW	1.1	3	1001			30	87%	18% (0.0 mm)		

20 May 24 Mon (Probability 98%)

21 May 24 Tue (Probability 95%)

22 May 24 Wed (Probability 90%)

23 May 24 Thu (Probability 80%)



0 0.5 1 2 3 4 6 8 10 12 14 20



Significant wave height (m)

MARINE WEATHER FORECAST- 10 NM SOUTH OF MONGLA FAIRWAY (Lat 21° 16' N, Long 089° 34' E)

DATE : 20 to 27 May 2024

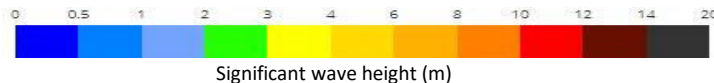
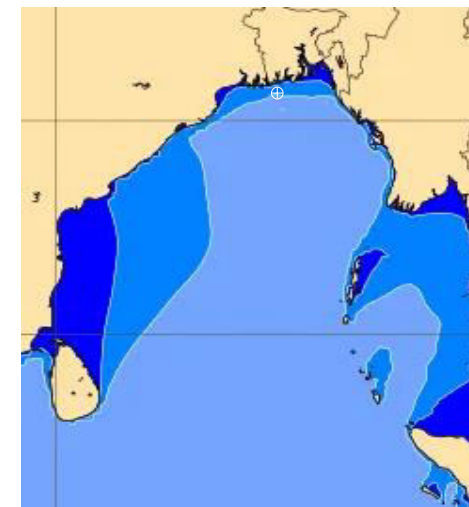
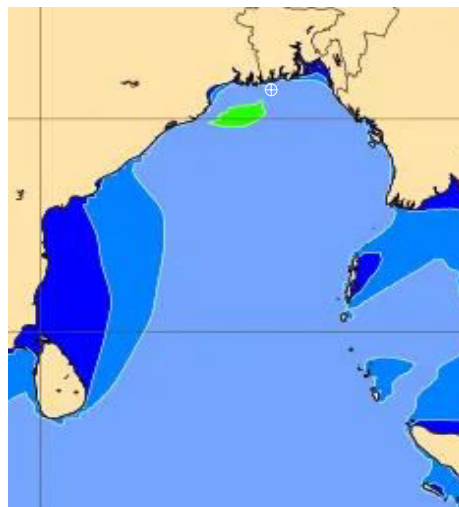
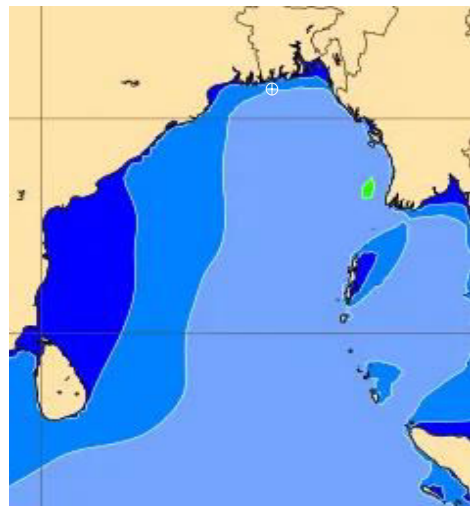
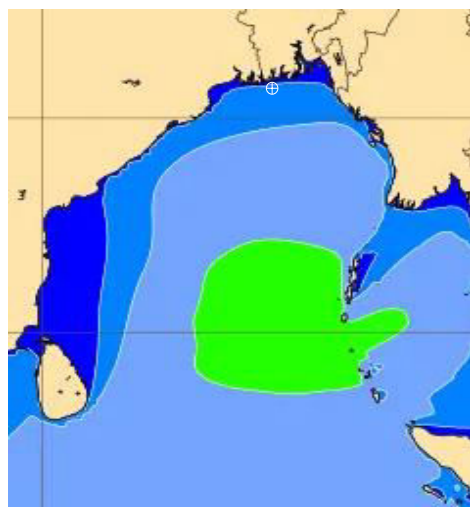
Date	Time	Max Wind Spd (kts)	W8nd Direction	Wave Ht (m)	Sea State	Baro Pressure	Air Temp		Sea Surface Temp	Humidity (%)	Prob of Rain (%)	Sea State	Wave Ht (m)
							Max	Min					
24-05-24	0001	12	SSE	1.5	4	1001	33	24	30	89%	23% (0.0 mm)	0	0
	0600	9	N	1.9	4	998			30	99%	25% (0.0 mm)	1	0 - 0.1
	1200	15	ENE	2.0	4	998			30	78%	24% (0.0 mm)	2	0.1 - 0.5
	1800	35	E	3.7	5	996			30	87%	18% (0.0 mm)	3	0.5 - 1.25
25-05-24	0001	38	E	4.3	6	995	33	24	29	89%	37% (0.0 mm)	4	1.25 - 2.5
	0600	54	ENE	6.7	7	992			28	98%	39% (0.0 mm)	5	2.5 - 4.0
	1200	62	ESE	8.9	7	991			29	79%	45% (0.0 mm)	6	4.0 - 6.0
	1800	57	SE	8.9	7	989			29	86%	58% (0.0 mm)	7	6.0 - 9.0
26-05-24	0001	51	SE	7.7	7	992	32	24	29	88%	57% (0.0 mm)	8	9.0 - 14.0
	0600	48	SSE	6.9	7	991			29	99%	56% (0.0 mm)	9	Over 14.0
	1200	42	SSE	5.6	6	997			30	78%	47% (0.0 mm)		
	1800	37	SSE	5.3	6	996			30	87%	38% (0.0 mm)		
27-05-24	0001	31	SSE	4.5	6	999	33	24	29	89%	26% (0.0 mm)		
	0600	30	SSE	4.0	5	998			29	98%	19% (0.0 mm)		
	1200	29	SSE	3.7	5	999			30	79%	18% (0.0 mm)		
	1800	27	SSE	3.5	5	996			30	89%	17% (0.0 mm)		

24 May 24 Fri (Probability 70%)

25 May 24 Sat (Probability 60%)

26 May 24 Sun (Probability 50%)

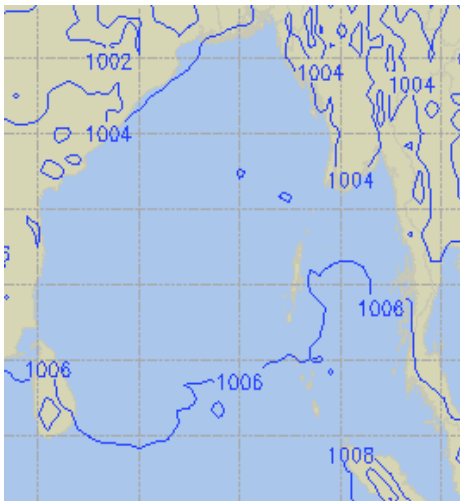
27 May 24 Mon (Probability 50%)



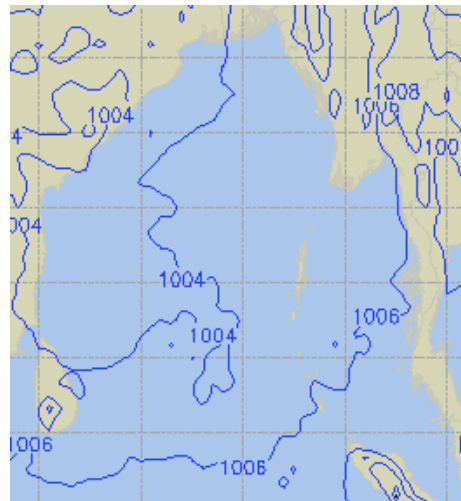
Significant wave height (m)

PREDICTED SURFACE PRESSURE FORECAST (20 to 26 May 2024)

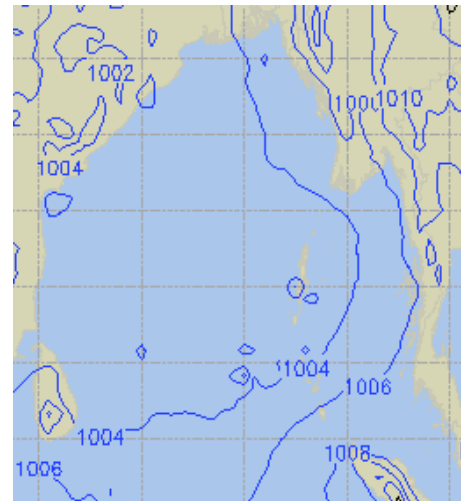
20 May 24 Mon (Probability 98%)



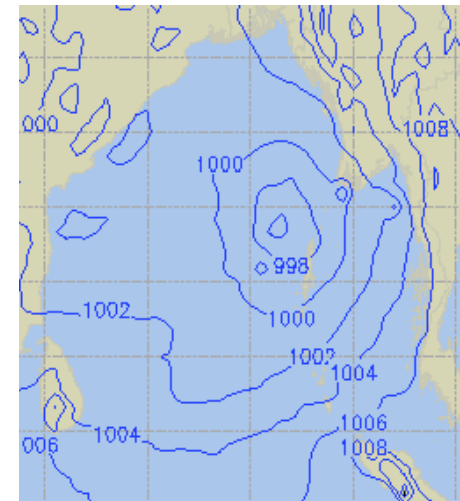
21 May 24 Tue (Probability 95%)



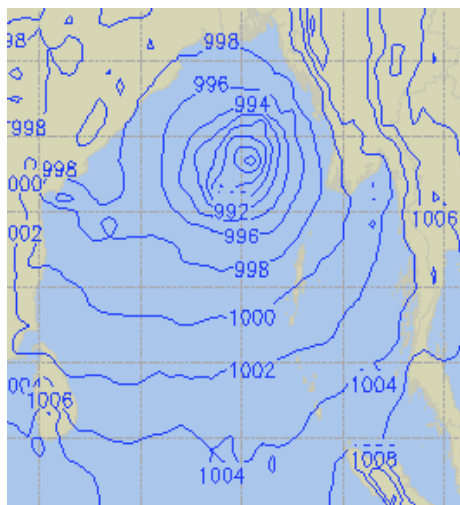
22 May 24 Wed (Probability 90%)



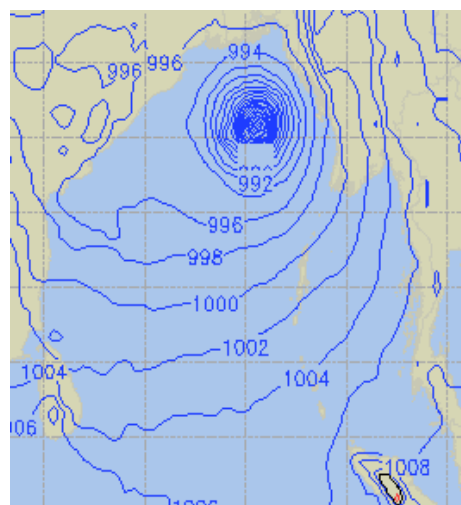
23 May 24 Thu (Probability 80%)



24 May 24 Fri (Probability 70%)



25 May 24 Sat (Probability 60%)



26 May 24 Sun (Probability 60%)

