

MARINE WEATHER FORECAST- NEAR AUTHORITY BUOY (Lat 22° 12' N, Long 091° 38' E)

DATE : 19 to 26 May 2024

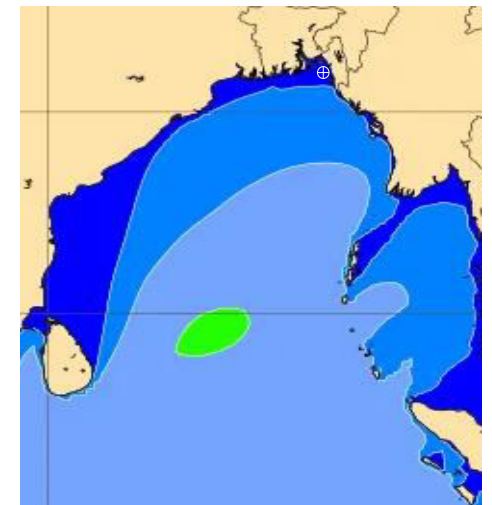
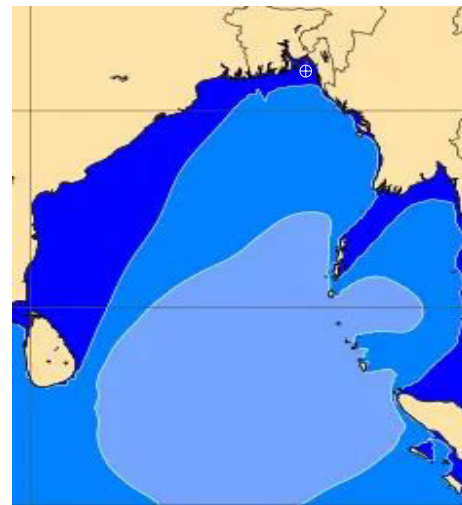
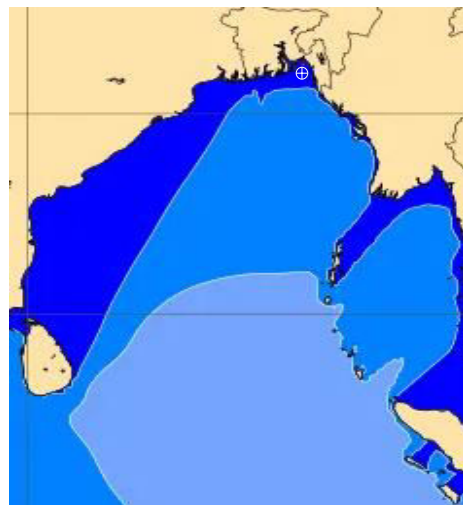
Date	Time	Max Wind Spd (kts)	Wind Direction	Wave Ht (m)	Sea State	Baro Pressure	Air Temp		Sea Surface Temp	Humidity (%)	Prob of Rain (%)	Sea State	Wave Ht (m)
							Max	Min					
19-05-24	0001	5	WSW	0.1	1	1005	35	26	30	83%	12% (0.0 mm)	0	0
	0600	4	SE	0.1	1	1005			29	95%	14% (0.0 mm)	1	0 - 0.1
	1200	6	WSW	0.1	1	1006			30	74%	13% (0.0 mm)	2	0.1 - 0.5
	1800	15	W	0.3	2	1002			30	86%	16% (0.0 mm)	3	0.5 - 1.25
20-05-24	0001	6	SSW	0.1	1	1004	35	26	29	82%	12% (0.0 mm)	4	1.25 - 2.5
	0600	8	SSE	0.1	1	1005			29	93%	14% (0.0 mm)	5	2.5 - 4.0
	1200	6	SW	0.1	1	1005			30	76%	15% (0.0 mm)	6	4.0 - 6.0
	1800	16	WSW	0.3	2	1001			30	82%	11% (0.0 mm)	7	6.0 - 9.0
21-05-24	0001	17	NNW	0.3	2	1006	35	26	29	84%	15% (0.0 mm)	8	9.0 - 14.0
	0600	8	SE	0.1	1	1006			29	91%	12% (0.0 mm)	9	Over 14.0
	1200	8	W	0.1	1	1005			30	75%	16% (0.0 mm)		
	1800	7	WSW	0.1	1	1002			30	86%	13% (0.0 mm)		
22-05-24	0001	7	SSW	0.1	1	1004	35	26	29	82%	15% (0.0 mm)		
	0600	8	E	0.1	1	1005			29	94%	11% (0.0 mm)		
	1200	6	SE	0.1	1	1004			30	71%	12% (0.0 mm)		
	1800	12	WSW	0.2	2	1002			30	82%	13% (0.0 mm)		

19 May 24 Sun (Probability 98%)

20 May 24 Mon (Probability 95%)

21 May 24 Tue (Probability 90%)

22 May 24 Wed (Probability 80%)



Significant wave height (m)

MARINE WEATHER FORECAST- NEAR AUTHORITY BUOY (Lat 22° 12'N, Long 091° 38'E)

DATE : 19 to 26 May 2024

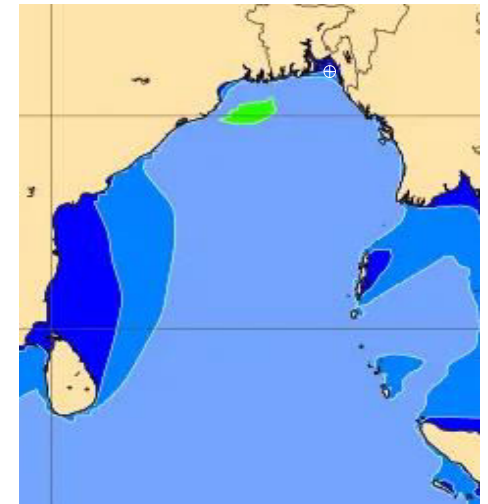
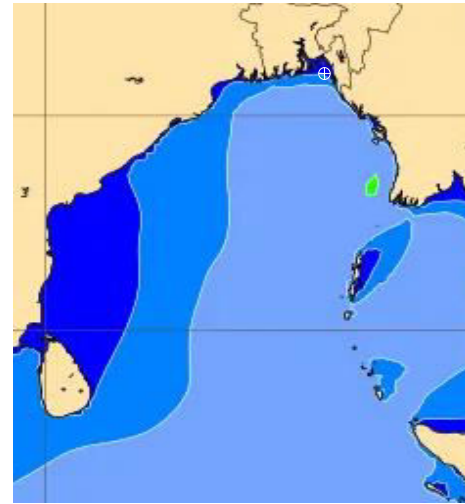
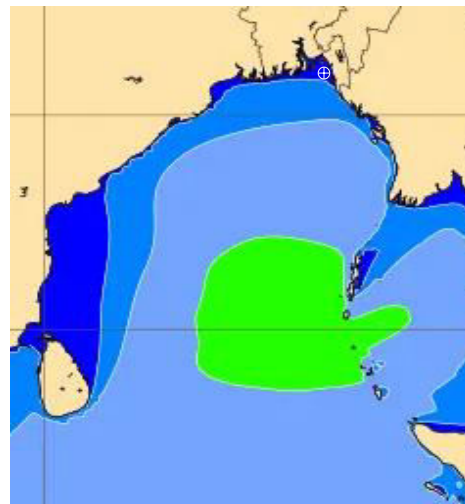
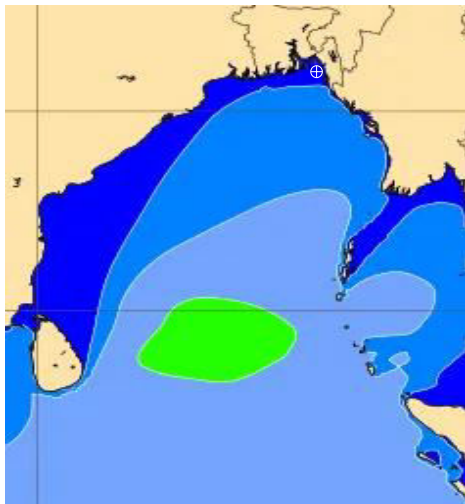
Date	Time	Max Wind Spd (kts)	Wind Direction	Wave Ht (m)	Sea State	Baro Pressure	Air Temp		Sea Surface Temp	Humidity (%)	Prob of Rain (%)	Sea State	Wave Ht (m)
							Max	Min					
23-05-24	0001	10	SSW	0.2	2	1003	35	26	30	81%	13% (0.0 mm)	0	0
	0600	6	ESE	0.1	1	1003			29	95%	15% (0.0 mm)	1	0 - 0.1
	1200	7	WSW	0.1	1	1002			30	73%	11% (0.0 mm)	2	0.1 - 0.5
	1800	15	SSW	0.2	2	1001			30	86%	14% (0.0 mm)	3	0.5 - 1.25
24-05-24	0001	7	SE	0.1	1	1002	35	26	29	82%	13% (0.0 mm)	4	1.25 - 2.5
	0600	6	ENE	0.1	1	1002			29	91%	12% (0.0 mm)	5	2.5 - 4.0
	1200	8	WSW	0.1	1	1001			30	74%	15% (0.0 mm)	6	4.0 - 6.0
	1800	8	S	0.2	2	1000			30	85%	14% (0.0 mm)	7	6.0 - 9.0
25-05-24	0001	17	SE	0.2	2	1002	35	26	29	84%	11% (0.0 mm)	8	9.0 - 14.0
	0600	19	ESE	0.3	2	1001			29	92%	12% (0.0 mm)	9	Over 14.0
	1200	22	S	0.3	2	1002			30	74%	13% (0.0 mm)		
	1800	26	SE	0.4	2	1000			30	81%	12% (0.0 mm)		
26-05-24	0001	23	SSE	0.4	2	1003	35	26	29	82%	15% (0.0 mm)		
	0600	19	SSE	0.4	2	1002			29	94%	14% (0.0 mm)		
	1200	14	SE	0.3	2	1003			30	73%	11% (0.0 mm)		
	1800	16	SSW	0.3	2	1000			30	86%	13% (0.0 mm)		

23 May 24 Thu (Probability 70%)

24 May 24 Fri (Probability 60%)

25 May 24 Sat (Probability 50%)

26 May 24 Sun (Probability 50%)



0 0.5 1 2 3 4 6 8 10 12 14 20

Significant wave height (m)

MARINE WEATHER FORECAST- 20 NM WEST OF ELEPHANT POINT (Lat 21° 10' N, Long 091° 42' E)

DATE : 19 to 26 May 2024

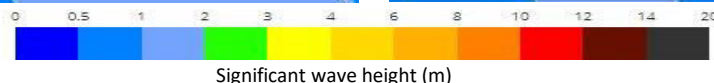
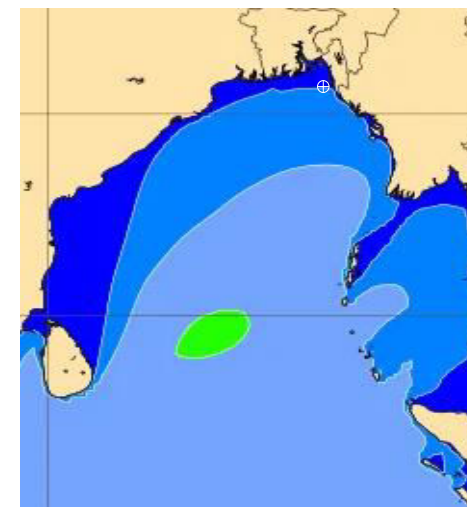
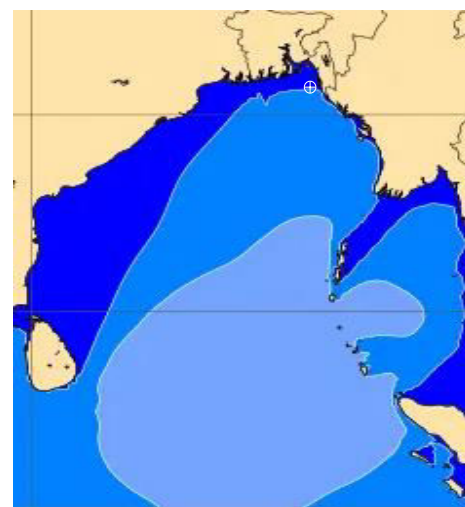
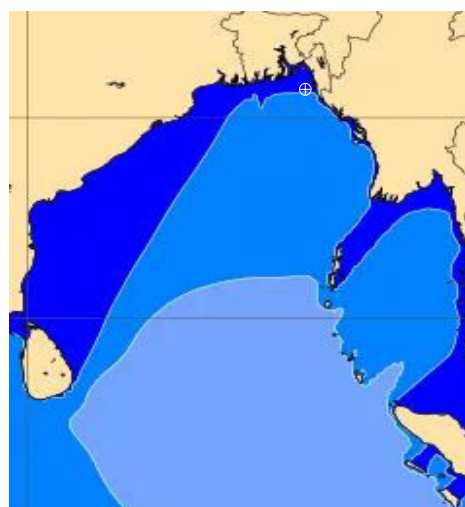
Date	Time	Max Wind Spd (kts)	Wind Direction	Wave Ht (m)	Sea State	Baro Pressure	Air Temp		Sea Surface Temp	Humidity (%)	Prob of Rain (%)	Sea State	Wave Ht (m)
							Max	Min					
19-05-24	0001	7	W	0.8	3	1005	35	26	30	83%	15% (0.0 mm)	0	0
	0600	6	W	0.7	3	1006			29	95%	14% (0.0 mm)	1	0 - 0.1
	1200	8	W	0.7	3	1005			30	74%	12% (0.0 mm)	2	0.1 - 0.5
	1800	12	SW	0.8	3	1003			30	86%	13% (0.0 mm)	3	0.5 - 1.25
20-05-24	0001	7	SW	0.7	3	1004	35	26	30	83%	16% (0.0 mm)	4	1.25 - 2.5
	0600	9	SSW	0.7	3	1005			29	92%	12% (0.0 mm)	5	2.5 - 4.0
	1200	5	S	0.6	3	1004			30	74%	14% (0.0 mm)	6	4.0 - 6.0
	1800	14	SW	0.7	3	1002			30	81%	11% (0.0 mm)	7	6.0 - 9.0
21-05-24	0001	9	W	0.8	3	1005	35	26	30	82%	15% (0.0 mm)	8	9.0 - 14.0
	0600	6	SSW	0.7	3	1004			29	95%	12% (0.0 mm)	9	Over 14.0
	1200	5	SSW	0.7	3	1005			30	73%	14% (0.0 mm)		
	1800	8	W	0.7	3	1002			30	85%	11% (0.0 mm)		
22-05-24	0001	7	SSW	0.7	3	1005	35	26	30	82%	12% (0.0 mm)		
	0600	8	SSW	0.7	3	1004			29	94%	13% (0.0 mm)		
	1200	6	SSW	0.7	3	1005			30	71%	16% (0.0 mm)		
	1800	12	SW	0.8	3	1002			30	83%	12% (0.0 mm)		

19 May 24 Sun (Probability 98%)

20 May 24 Mon (Probability 95%)

21 May 24 Tue (Probability 90%)

22 May 24 Wed (Probability 80%)



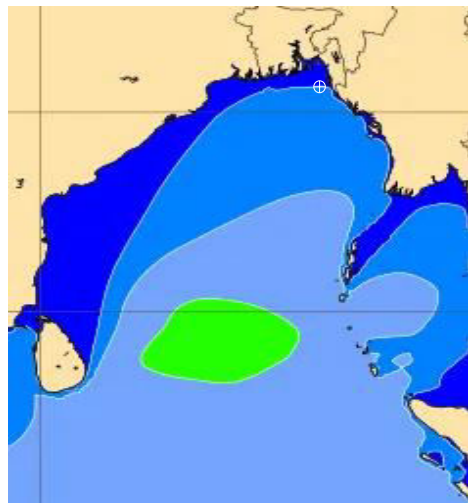
Significant wave height (m)

MARINE WEATHER FORECAST- 20 NM WEST OF ELEPHANT POINT (Lat 21° 10' N, Long 091° 42' E)

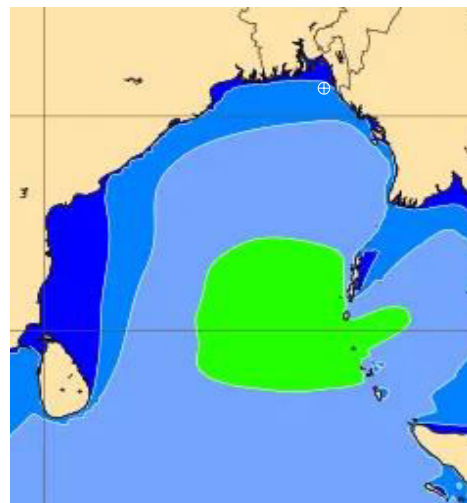
DATE : 19 to 26 May 2024

Date	Time	Max Wind Spd (kts)	Wind Direction	Wave Ht (m)	Sea State	Baro Pressure	Air Temp		Sea Surface Temp	Humidity (%)	Prob of Rain (%)	Sea State	Wave Ht (m)
							Max	Min					
23-05-24	0001	10	S	0.7	3	1003	35	26	30	88%	16% (0.0 mm)	0	0
	0600	9	SE	0.9	3	1003			30	99%	17% (0.0 mm)	1	0 - 0.1
	1200	14	SSW	1.1	3	1002			31	76%	18% (0.0 mm)	2	0.1 - 0.5
	1800	12	S	1.2	3	1001			30	87%	19% (0.0 mm)	3	0.5 - 1.25
24-05-24	0001	15	SE	1.6	4	1002	35	26	30	88%	16% (0.0 mm)	4	1.25 - 2.5
	0600	13	E	1.7	4	1001			30	99%	18% (0.0 mm)	5	2.5 - 4.0
	1200	24	ESE	2.1	4	1002			31	78%	17% (0.0 mm)	6	4.0 - 6.0
	1800	30	SSE	2.6	5	1000			30	87%	18% (0.0 mm)	7	6.0 - 9.0
25-05-24	0001	32	SE	2.6	5	1002	35	26	30	89%	19% (0.0 mm)	8	9.0 - 14.0
	0600	25	SE	2.8	5	1001			30	96%	15% (0.0 mm)	9	Over 14.0
	1200	23	SE	2.4	4	1002			31	78%	18% (0.0 mm)		
	1800	25	SE	2.3	4	1000			30	87%	17% (0.0 mm)		
26-05-24	0001	20	SE	2.3	4	1002	35	26	30	89%	16% (0.0 mm)		
	0600	19	SE	2.4	4	1001			30	95%	18% (0.0 mm)		
	1200	20	SSE	2.4	4	1002			31	76%	15% (0.0 mm)		
	1800	21	SE	2.4	4	1000			30	88%	17% (0.0 mm)		

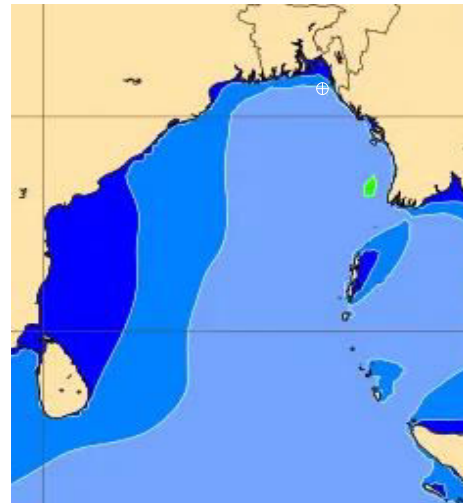
23 May 24 Thu (Probability 70%)



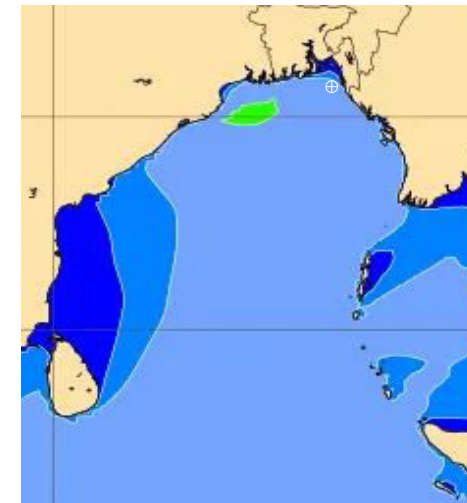
24 May 24 Fri (Probability 60%)



25 May 24 Sat (Probability 50%)



26 May 24 Sun (Probability 50%)



0 0.5 1 2 3 4 6 8 10 12 14 20



Significant wave height (m)

MARINE WEATHER FORECAST- 15 NM WEST OF ST. MARTIN'S LIGHT HOUSE (Lat 20° 37' N, Long 092° 03' E)

DATE : 19 to 26 May 2024

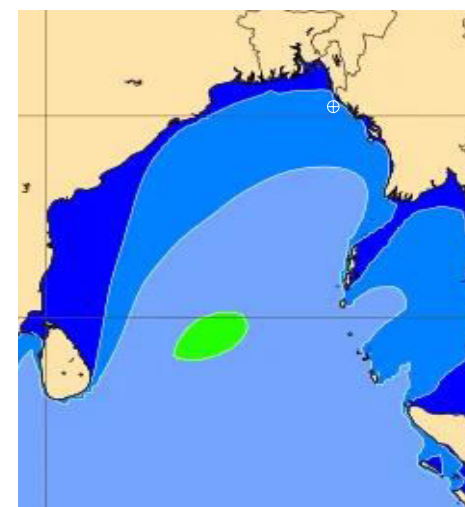
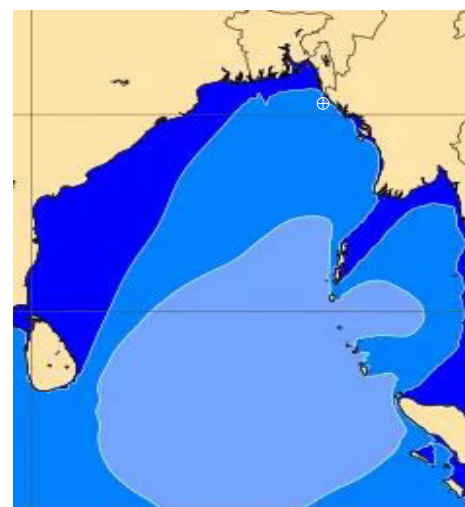
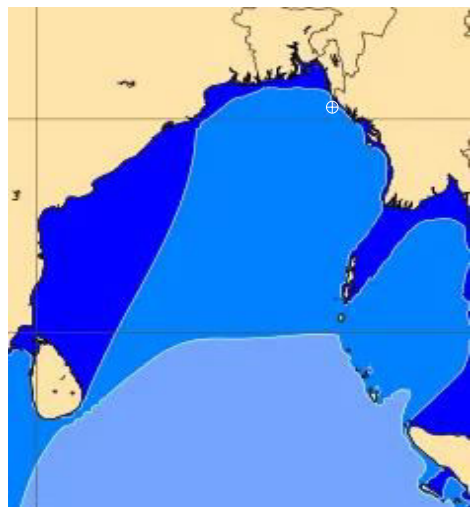
Date	Time	Max Wind Spd (kts)	Wind Direction	Wave Ht (m)	Sea State	Baro Pressure	Air Temp		Sea Surface Temp	Humidity (%)	Prob of Rain(%)	Sea State	Wave Ht (m)
							Max	Min					
19-05-24	0001	10	W	1.0	3	1006	35	26	30	81%	16% (0.0 mm)	0	0
	0600	6	NW	0.9	3	1005			30	93%	15% (0.0 mm)	1	0 - 0.1
	1200	8	W	0.8	3	1006			31	72%	14% (0.0 mm)	2	0.1 - 0.5
	1800	17	W	1.0	3	1002			31	84%	13% (0.0 mm)	3	0.5 - 1.25
20-05-24	0001	8	WSW	0.9	3	1004	35	26	30	86%	15% (0.0 mm)	4	1.25 - 2.5
	0600	6	WSW	0.8	3	1005			30	95%	14% (0.0 mm)	5	2.5 - 4.0
	1200	5	SE	0.7	3	1006			31	72%	12% (0.0 mm)	6	4.0 - 6.0
	1800	14	WSW	0.9	3	1001			31	84%	15% (0.0 mm)	7	6.0 - 9.0
21-05-24	0001	9	WNW	0.9	3	1005	35	26	30	81%	14% (0.0 mm)	8	9.0 - 14.0
	0600	5	NW	0.8	3	1004			30	95%	16% (0.0 mm)	9	Over 14.0
	1200	8	WSW	0.8	3	1005			31	72%	13% (0.0 mm)		
	1800	12	W	1.0	3	1002			31	84%	15% (0.0 mm)		
22-05-24	0001	6	SW	0.8	3	1005	35	26	30	86%	16% (0.0 mm)		
	0600	7	W	0.8	3	1004			30	93%	15% (0.0 mm)		
	1200	9	SW	0.9	3	1005			31	75%	12% (0.0 mm)		
	1800	16	WSW	1.0	3	1002			31	84%	15% (0.0 mm)		

19 May 24 Sun (Probability 98%)

20 May 24 Mon (Probability 95%)

21 May 24 Tue (Probability 90%)

22 May 24 Wed (Probability 80%)



0 0.5 1 2 3 4 6 8 10 12 14 20



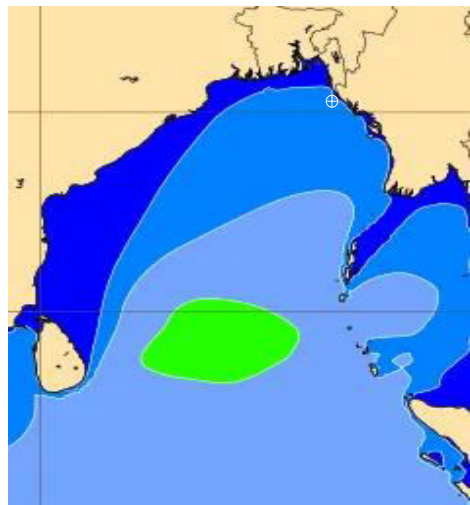
Significant wave height (m)

MARINE WEATHER FORECAST- 15 NM WEST OF ST. MARTIN'S LIGHT HOUSE (Lat 20° 37' N, Long 092° 03' E)

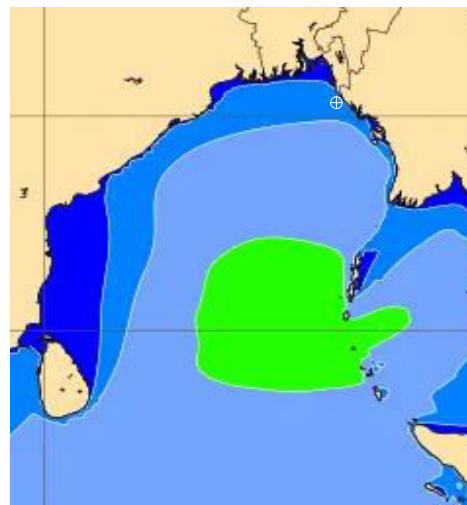
DATE : 19 to 26 May 2024

Date	Time	Max Wind Spd (kts)	Wind Direction	Wave Ht (m)	Sea State	Baro Pressure	Air Temp		Sea Surface Temp	Humidity (%)	Prob of Rain (%)	Sea State	Wave Ht (m)
							Max	Min					
23-05-24	0001	9	SE	1.0	3	1004	35	26	30	83%	14% (0.0 mm)	0	0
	0600	13	ESE	1.1	3	1002			30	95%	15% (0.0 mm)	1	0 - 0.1
	1200	16	SSE	1.2	3	1003			31	74%	12% (0.0 mm)	2	0.1 - 0.5
	1800	19	SSE	1.7	4	1001			31	86%	14% (0.0 mm)	3	0.5 - 1.25
24-05-24	0001	22	SSE	2.3	4	1003	35	26	30	88%	16% (0.0 mm)	4	1.25 - 2.5
	0600	27	SE	2.5	5	1002			30	94%	13% (0.0 mm)	5	2.5 - 4.0
	1200	27	ESE	2.6	5	1001			31	76%	15% (0.0 mm)	6	4.0 - 6.0
	1800	38	SE	2.9	5	1000			31	85%	18% (0.0 mm)	7	6.0 - 9.0
25-05-24	0001	31	SE	2.8	5	1003	35	26	30	84%	15% (0.0 mm)	8	9.0 - 14.0
	0600	19	SE	2.8	5	1001			30	96%	16% (0.0 mm)	9	Over 14.0
	1200	22	SE	2.8	5	1003			31	75%	12% (0.0 mm)		
	1800	22	S	2.7	5	1002			31	89%	14% (0.0 mm)		
26-05-24	0001	14	SE	2.7	5	1003	35	26	30	87%	12% (0.0 mm)		
	0600	20	SE	2.7	5	1001			30	98%	15% (0.0 mm)		
	1200	19	SE	2.7	5	1002			31	76%	16% (0.0 mm)		
	1800	22	SSE	2.8	5	1000			31	85%	13% (0.0 mm)		

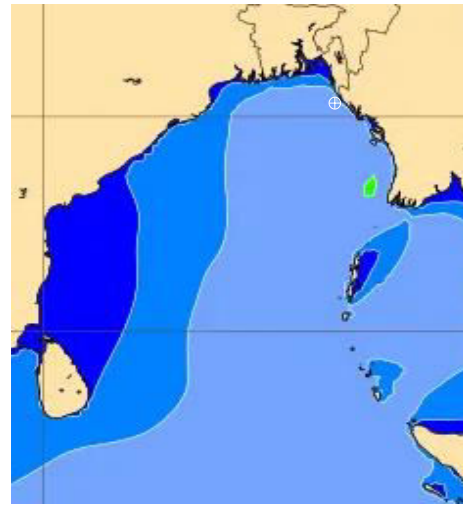
23 May 24 Thu (Probability 70%)



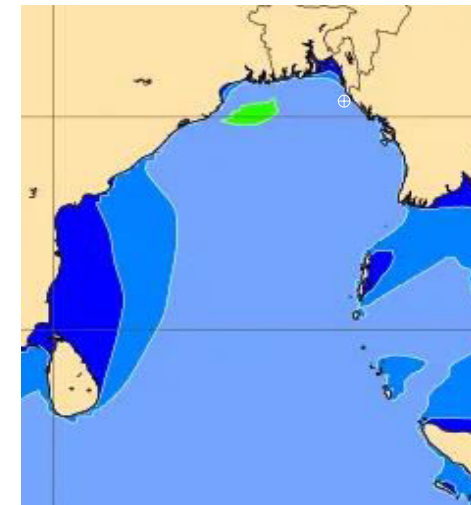
24 May 24 Fri (Probability 60%)



25 May 24 Sat (Probability 50%)



26 May 24 Sun (Probability 50%)



0 0.5 1 2 3 4 6 8 10 12 14 20

Significant wave height (m)

MARINE WEATHER FORECAST- 40 NM ESE OF PAYRA FAIRWAY (Lat 21° 07' N, Long 090° 45' E)

DATE : 19 to 26 May 2024

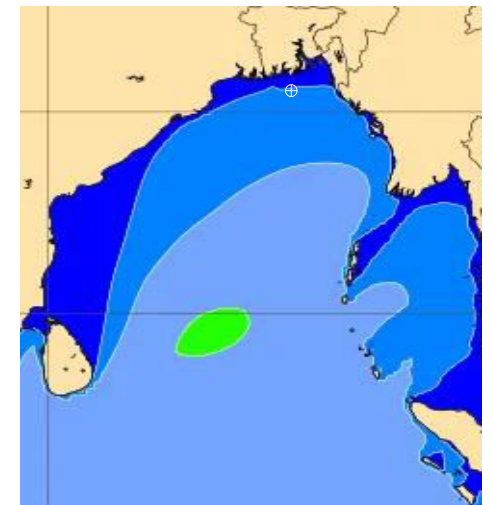
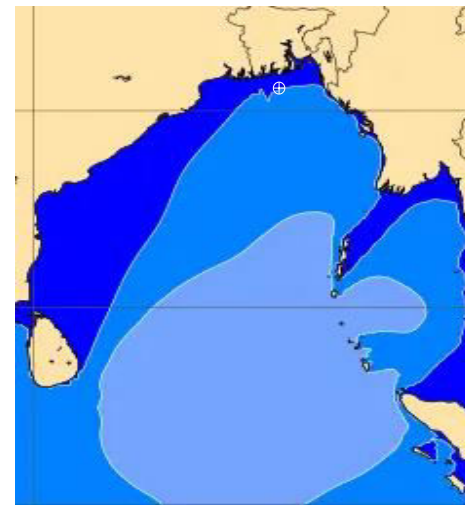
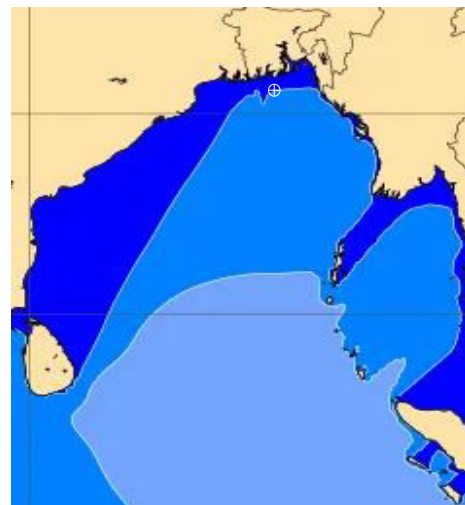
Date	Time	Max Wind Spd (kts)	Wind Direction	Wave Ht (m)	Sea State	Baro Pressure	Air Temp		Sea Surface Temp	Humidity (%)	Prob of Rain (%)	Sea State	Wave Ht (m)
							Max	Min					
19-05-24	0001	12	SW	1.0	3	1005	36	26	30	86%	16% (0.0 mm)	0	0
	0600	7	WSW	1.0	3	1005			30	94%	14% (0.0 mm)	1	0 - 0.1
	1200	11	WSW	1.0	3	1006			31	75%	15% (0.0 mm)	2	0.1 - 0.5
	1800	10	WSW	1.0	3	1002			31	86%	12% (0.0 mm)	3	0.5 - 1.25
20-05-24	0001	13	SW	1.1	3	1004	36	26	30	88%	14% (0.0 mm)	4	1.25 - 2.5
	0600	12	SW	1.1	3	1005			30	97%	18% (0.0 mm)	5	2.5 - 4.0
	1200	7	WSW	1.0	3	1005			31	78%	17% (0.0 mm)	6	4.0 - 6.0
	1800	10	SW	1.0	3	1002			31	89%	16% (0.0 mm)	7	6.0 - 9.0
21-05-24	0001	14	WSW	1.0	3	1005	36	26	30	86%	15% (0.0 mm)	8	9.0 - 14.0
	0600	7	SW	0.9	3	1004			30	95%	14% (0.0 mm)	9	Over 14.0
	1200	6	SSW	0.9	3	1006			31	74%	15% (0.0 mm)		
	1800	8	SW	0.9	3	1002			31	88%	12% (0.0 mm)		
22-05-24	0001	11	SSW	1.0	3	1004	36	26	30	86%	14% (0.0 mm)		
	0600	8	SW	1.0	3	1004			30	98%	12% (0.0 mm)		
	1200	10	SE	1.0	3	1005			31	75%	16% (0.0 mm)		
	1800	13	SSW	1.0	3	1002			31	87%	15% (0.0 mm)		

19 May 24 Sun (Probability 98%)

20 May 24 Mon (Probability 95%)

21 May 24 Tue (Probability 90%)

22 May 24 Wed (Probability 80%)



0 0.5 1 2 3 4 6 8 10 12 14 20



Significant wave height (m)

MARINE WEATHER FORECAST- 40 NM ESE OF PAYRA FAIRWAY (Lat 21° 07' N, Long 090° 45' E)

DATE : 19 to 26 May 2024

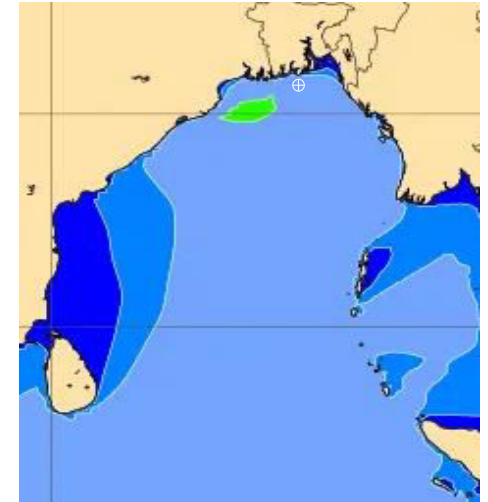
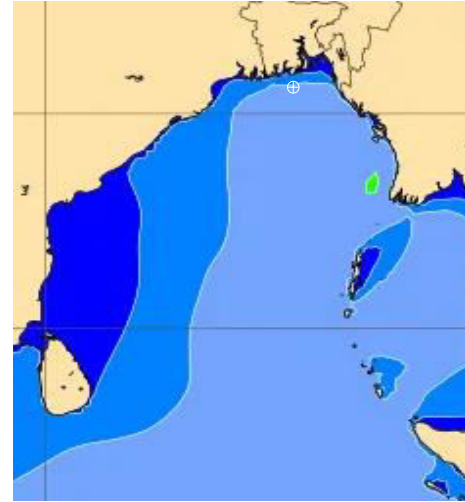
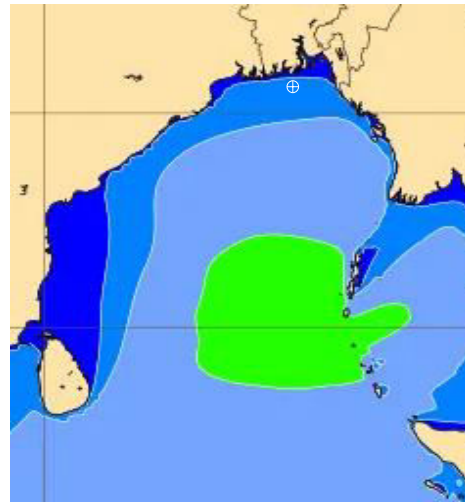
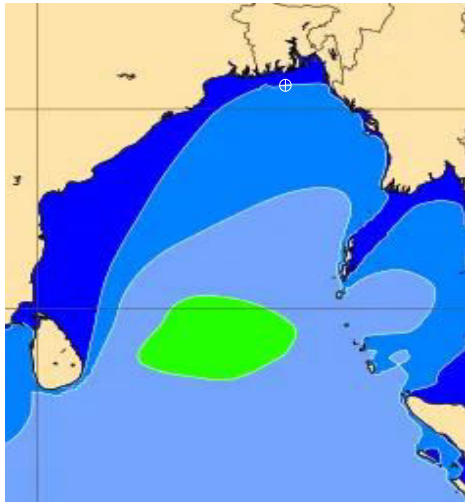
Date	Time	Max Wind Spd (kts)	Wind Direction	Wave Ht (m)	Sea State	Baro Pressure	Air Temp		Sea Surface Temp	Humidity (%)	Prob of Rain (%)	Sea State	Wave Ht (m)
							Max	Min					
23-05-24	0001	10	SE	0.9	3	1003	36	26	30	88%	19% (0.0 mm)	0	0
	0600	11	SE	1.0	3	1002			30	99%	18% (0.0 mm)	1	0 - 0.1
	1200	19	SE	1.3	4	1003			31	76%	17% (0.0 mm)	2	0.1 - 0.5
	1800	21	SSE	1.7	4	1001			31	87%	16% (0.0 mm)	3	0.5 - 1.25
24-05-24	0001	25	SE	2.3	4	1001	36	26	30	88%	20% (0.0 mm)	4	1.25 - 2.5
	0600	26	ESE	2.9	5	1001			30	99%	21% (0.0 mm)	5	2.5 - 4.0
	1200	30	ESE	3.2	5	1002			31	78%	23% (0.0 mm)	6	4.0 - 6.0
	1800	32	SE	3.4	5	1000			31	87%	25% (0.0 mm)	7	6.0 - 9.0
25-05-24	0001	29	SE	3.2	5	1001	36	26	30	88%	25% (0.0 mm)	8	9.0 - 14.0
	0600	24	SE	3.2	5	1000			30	99%	24% (0.0 mm)	9	Over 14.0
	1200	25	SE	3.1	5	1001			31	78%	25% (0.0 mm)		
	1800	24	SSE	3.1	5	1000			31	87%	24% (0.0 mm)		
26-05-24	0001	25	SE	3.1	5	1001	36	26	30	88%	19% (0.0 mm)		
	0600	23	SSE	3.3	5	1001			30	99%	20% (0.0 mm)		
	1200	21	SE	3.2	5	1000			31	79%	21% (0.0 mm)		
	1800	24	SSE	3.2	5	1001			31	88%	23% (0.0 mm)		

23 May 24 Thu (Probability 70%)

24 May 24 Fri (Probability 60%)

25 May 24 Sat (Probability 50%)

26 May 24 Sun (Probability 50%)



0 0.5 1 2 3 4 6 8 10 12 14 20



Significant wave height (m)

MARINE WEATHER FORECAST- 10 NM SOUTH OF MONGLA FAIRWAY (Lat 21° 16'N, Long 089° 34'E)

DATE : 19 to 26 May 2024

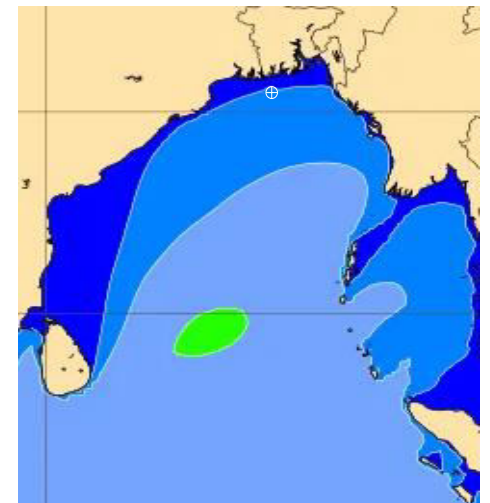
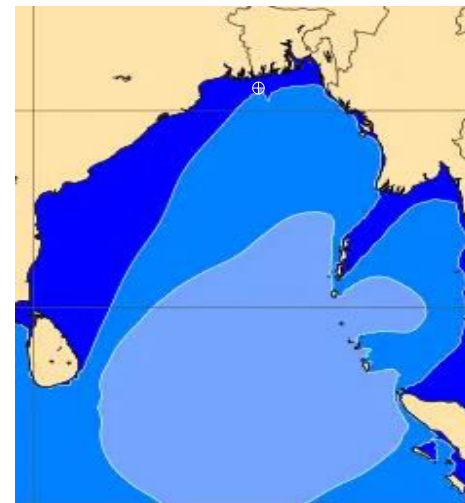
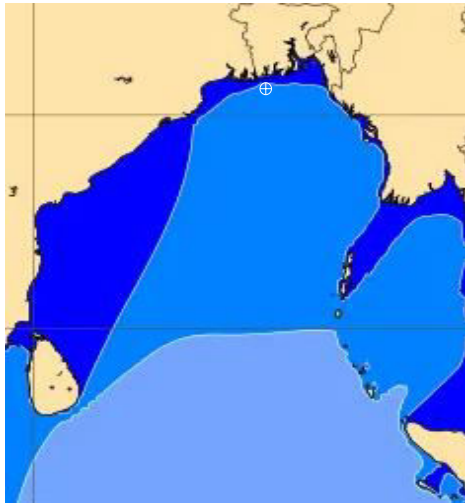
Date	Time	Max Wind Spd (kts)	Wind Direction	Wave Ht (m)	Sea State	Baro Pressure	Air Temp		Sea Surface Temp	Humidity (%)	Prob of Rain (%)	Sea State	Wave Ht (m)
							Max	Min					
19-05-24	0001	16	SW	1.1	3	1005	36	26	30	81%	17% (0.0 mm)	0	0
	0600	12	SW	1.1	3	1005			30	92%	14% (0.0 mm)	1	0 - 0.1
	1200	13	SW	1.2	3	1006			31	73%	15% (0.0 mm)	2	0.1 - 0.5
	1800	14	SSW	1.2	3	1002			31	85%	18% (0.0 mm)	3	0.5 - 1.25
20-05-24	0001	16	SW	1.2	3	1003	36	26	30	84%	17% (0.0 mm)	4	1.25 - 2.5
	0600	16	SW	1.2	3	1004			30	92%	14% (0.0 mm)	5	2.5 - 4.0
	1200	10	SW	1.2	3	1005			31	75%	15% (0.0 mm)	6	4.0 - 6.0
	1800	15	SSW	1.1	3	1002			31	84%	13% (0.0 mm)	7	6.0 - 9.0
21-05-24	0001	14	WSW	1.1	3	1005	36	26	30	83%	15% (0.0 mm)	8	9.0 - 14.0
	0600	11	SSW	1.2	3	1004			30	95%	14% (0.0 mm)	9	Over 14.0
	1200	9	SSW	1.1	3	1005			30	76%	15% (0.0 mm)		
	1800	8	SSW	1.0	3	1001			30	82%	16% (0.0 mm)		
22-05-24	0001	14	WSW	1.1	3	1005	36	26	30	84%	12% (0.0 mm)		
	0600	9	S	1.0	3	1003			30	95%	14% (0.0 mm)		
	1200	10	SSW	1.1	3	1005			30	72%	15% (0.0 mm)		
	1800	13	SSW	1.1	3	1001			30	86%	16% (0.0 mm)		

19 May 24 Sun (Probability 98%)

20 May 24 Mon (Probability 95%)

21 May 24 Tue (Probability 90%)

22 May 24 Wed (Probability 80%)



0 0.5 1 2 3 4 6 8 10 12 14 20

Significant wave height (m)

MARINE WEATHER FORECAST- 10 NM SOUTH OF MONGLA FAIRWAY (Lat 21° 16' N, Long 089° 34' E)

DATE : 19 to 26 May 2024

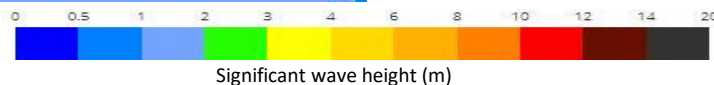
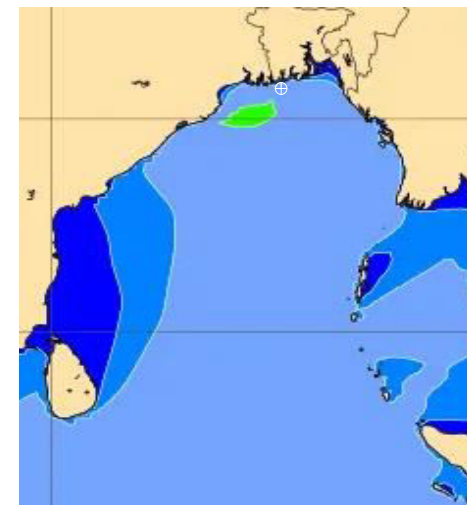
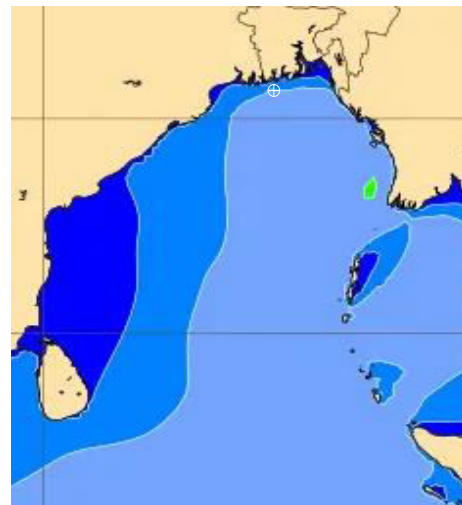
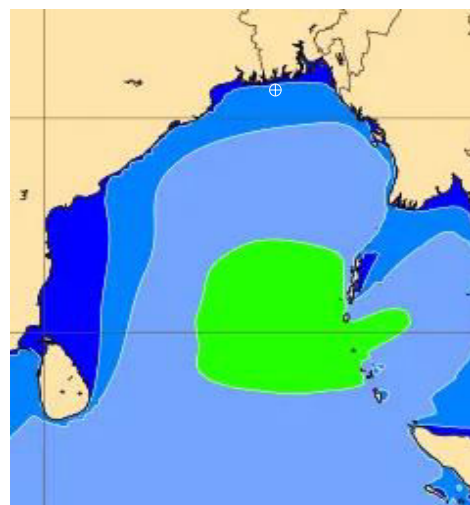
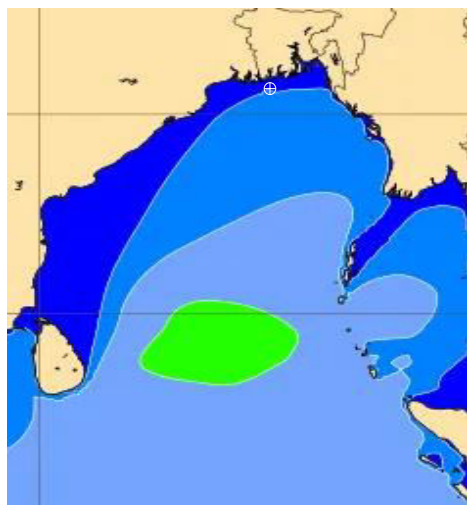
Date	Time	Max Wind Spd (kts)	W8nd Direction	Wave Ht (m)	Sea State	Baro Pressure	Air Temp		Sea Surface Temp	Humidity (%)	Prob of Rain (%)	Sea State	Wave Ht (m)
							Max	Min					
23-05-24	0001	9	S	0.9	3	1003	36	26	30	85%	19% (0.0 mm)	0	0
	0600	10	ESE	0.9	3	1002			30	99%	18% (0.0 mm)	1	0 - 0.1
	1200	15	ESE	1.3	3	1002			30	78%	17% (0.0 mm)	2	0.1 - 0.5
	1800	18	SE	1.6	4	1000			30	87%	16% (0.0 mm)	3	0.5 - 1.25
24-05-24	0001	23	ESE	1.9	4	1001	36	26	30	89%	25% (0.0 mm)	4	1.25 - 2.5
	0600	26	ESE	2.6	5	1000			30	98%	24% (0.0 mm)	5	2.5 - 4.0
	1200	27	E	3.8	5	1001			30	77%	21% (0.0 mm)	6	4.0 - 6.0
	1800	31	ESE	2.9	5	1000			30	89%	23% (0.0 mm)	7	6.0 - 9.0
25-05-24	0001	28	SE	3.3	5	1000	36	26	30	88%	20% (0.0 mm)	8	9.0 - 14.0
	0600	25	SE	3.7	5	1000			30	97%	24% (0.0 mm)	9	Over 14.0
	1200	27	SE	3.6	5	1000			30	76%	21% (0.0 mm)		
	1800	25	SE	3.6	5	1000			30	89%	20% (0.0 mm)		
26-05-24	0001	25	SE	3.3	5	1000	36	26	30	89%	25% (0.0 mm)		
	0600	27	SSE	3.6	5	1000			30	98%	22% (0.0 mm)		
	1200	26	SE	3.3	5	1000			30	77%	23% (0.0 mm)		
	1800	24	SSE	3.3	5	1000			30	88%	25% (0.0 mm)		

23 May 24 Thu (Probability 70%)

24 May 24 Fri (Probability 60%)

25 May 24 Sat (Probability 50%)

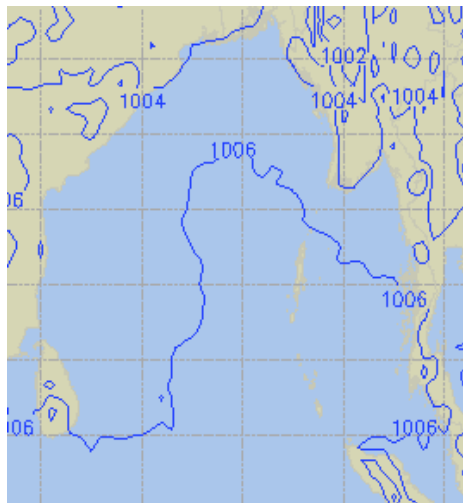
26 May 24 Sun (Probability 50%)



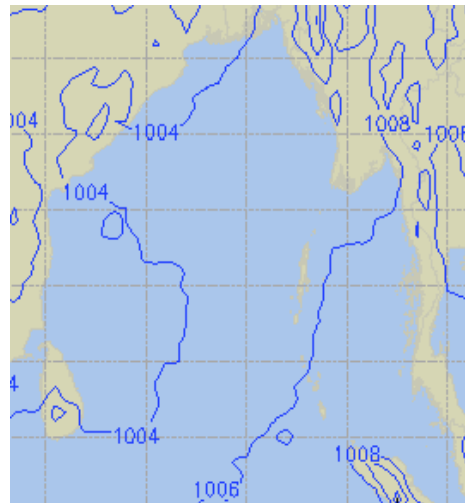
Significant wave height (m)

PREDICTED SURFACE PRESSURE FORECAST (19 to 25 May 2024)

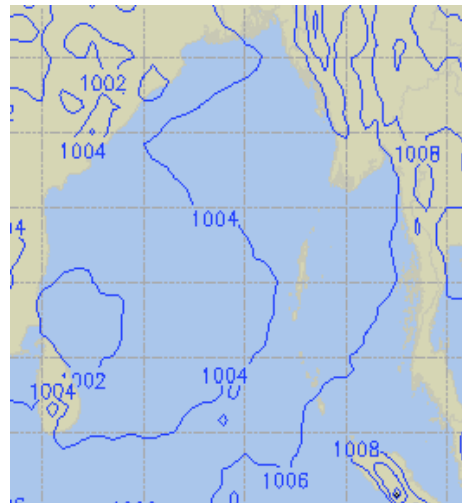
19 May 24 Sun (Probability 98%)



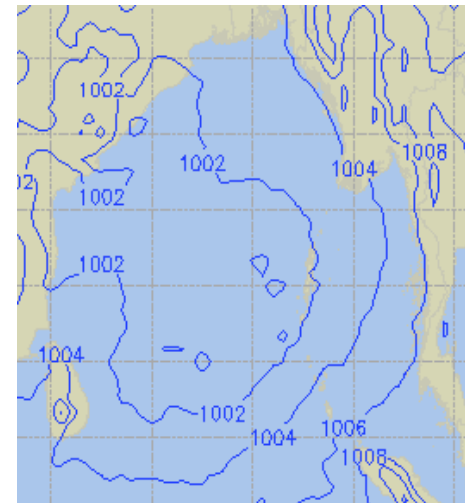
20 May 24 Mon (Probability 95%)



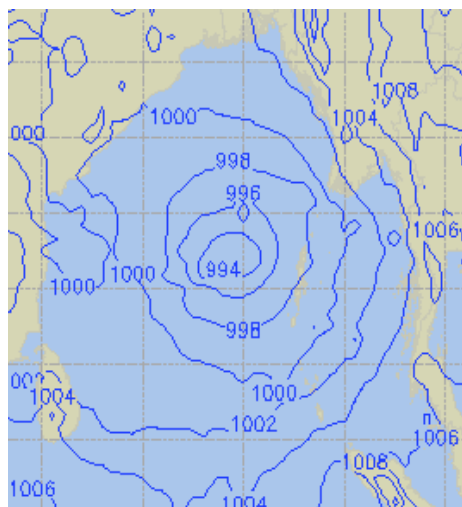
21 May 24 Tue (Probability 90%)



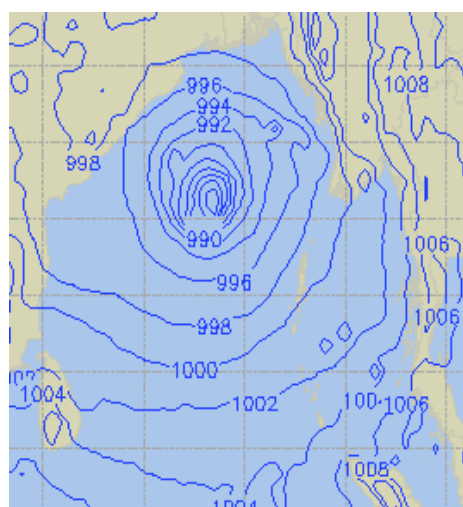
22 May 24 Wed (Probability 80%)



23 May 24 Thu (Probability 70%)



24 May 24 Fri (Probability 60%)



25 May 24 Sat (Probability 60%)

