



SUMMARY OF MARINE WEATHER FORECAST
COASTAL AREA OF BANGLADESH
DATE: 19 to 26 Feb 2025



Fleet forecast	Trough of low lies over West Bengal and adjoining area. Seasonal low lies over South Bay.
Wind direction, speed	West/South-westerly 8 kts, (Temporary gusting up to 17 kts).
Wave height & sea state	Wave height: 0.1 to 1.1 m (Sea state:1 to 3).
Sea surface temperature	22°C - 27°C (May remain nearly unchanged).
Baro pressure	1010-1015 mb.
Rainfall	Partly cloudy sky over Bay of Bengal & adjoining area.
Fog	Light to moderate fog may occur over the coastal area during early morning.

Outlook for 19 to 26 Feb 2025: Weather may remain dry with temporary partly cloudy sky. Night and day temperature may rise.



MARINE WEATHER FORECAST (19 to 26 Feb 2025)

PATENGA POINT (22° 12' N, 091° 38' E)



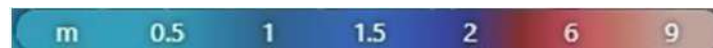
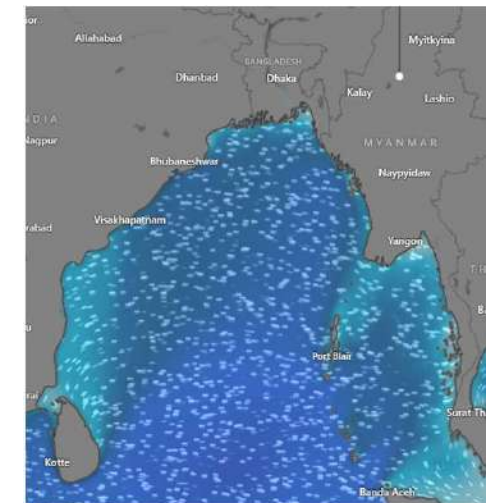
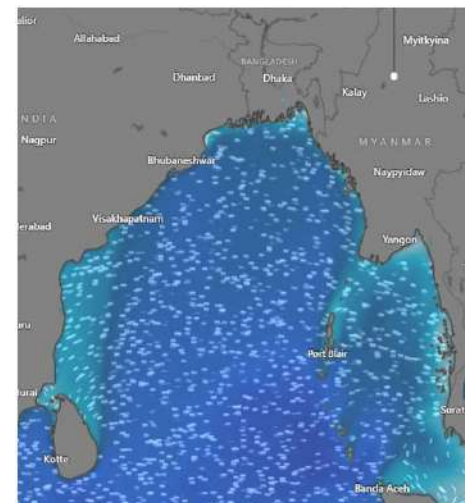
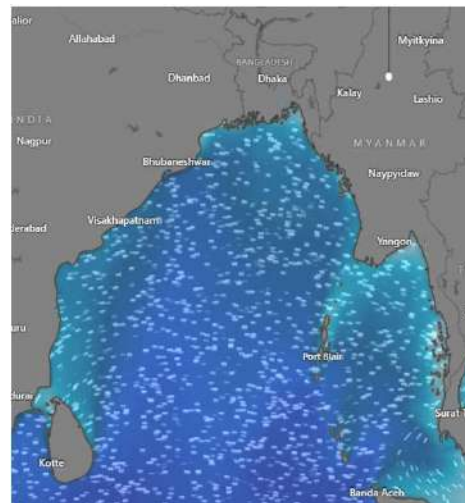
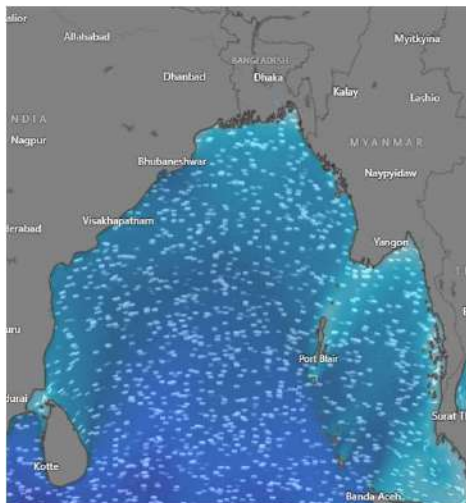
Date	Time	Air Temp (°C)		Sea Surface Temp (°C)	Baro Pressure (mbar)	Wind Direction	Wind Spd (kts)		Wave Ht (m)	Sea State	Humidity (%)	Prob of Rain (%)	Amount of Rain (mm)
		Max	Min				Gusting	Avg					
19-02-25 (Wednesday)	0001	30	18	23	1012	SW	4	2	0.1	1	88	6	0.0
	0600			22	1015	E	5	3	0.1	1	92	9	0.0
	1200			26	1012	W	11	7	0.1	1	54	4	0.0
	1800			24	1013	SW	10	5	0.1	1	72	5	0.0
20-02-25 (Thursday)	0001	30	18	23	1012	NW	6	4	0.1	1	89	6	0.0
	0600			22	1015	NNE	6	4	0.1	1	91	8	0.0
	1200			26	1012	NW	9	6	0.1	1	53	3	0.0
	1800			24	1013	NW	13	7	0.2	2	76	5	0.0
21-02-25 (Friday)	0001	30	18	23	1012	NNW	11	7	0.2	2	89	8	0.0
	0600			22	1015	NNE	9	4	0.2	2	94	9	0.0
	1200			26	1012	NW	10	6	0.2	2	55	3	0.0
	1800			24	1013	SW	11	4	0.1	1	74	7	0.0
22-02-25 (Saturday)	0001	30	18	23	1012	W	9	4	0.2	2	90	7	0.0
	0600			22	1015	E	7	3	0.2	2	94	9	0.0
	1200			26	1012	W	11	7	0.1	1	53	4	0.0
	1800			24	1013	NW	13	6	0.2	2	74	6	0.0

19 Feb 2025

20 Feb 2025

21 Feb 2025

22 Feb 2025



Significant wave height (m)



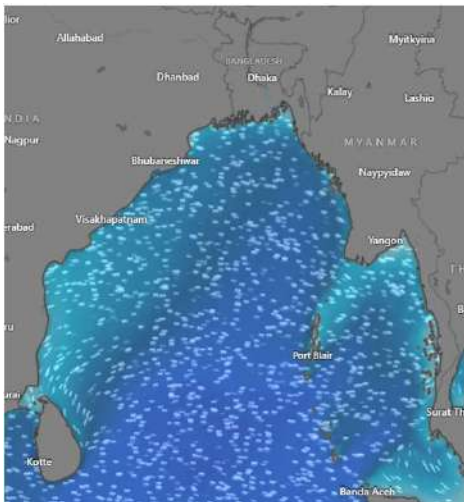
MARINE WEATHER FORECAST (19 to 26 Feb 2025)

PATENGA POINT (22° 12' N, 091° 38' E)

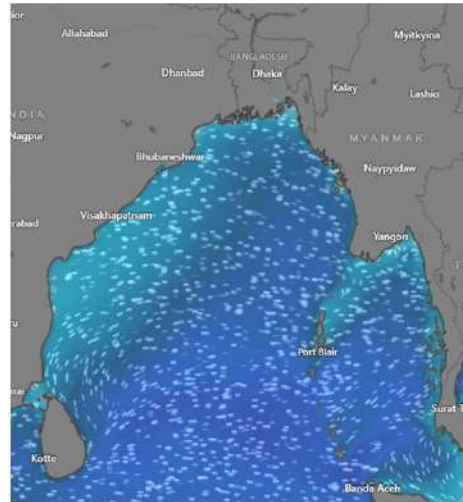


Date	Time	Air Temp (°C)		Sea Surface Temp (°C)	Baro Pressure (mbar)	Wind Direction	Wind Spd (kts)		Wave Ht (m)	Sea State	Humidity (%)	Prob of Rain (%)	Amount of Rain (mm)
		Max	Min				Gusting	Avg					
23-02-25 (Sunday)	0001	30	19	24	1012	N	14	7	0.1	1	90	6	0.0
	0600			23	1015	NNE	9	4	0.2	2	93	9	0.0
	1200			27	1012	W	13	9	0.2	2	56	2	0.0
	1800			25	1013	NW	15	7	0.2	2	74	5	0.0
24-02-25 (Monday)	0001	30	19	24	1012	NNW	9	5	0.1	1	89	7	0.0
	0600			23	1015	NNE	9	6	0.2	2	92	9	0.0
	1200			27	1012	NNW	13	9	0.2	2	55	2	0.0
	1800			25	1013	NNW	15	9	0.2	2	73	6	0.0
25-02-25 (Tuesday)	0001	30	19	24	1012	N	11	7	0.2	2	89	6	0.0
	0600			23	1015	NNE	11	7	0.2	2	94	9	0.0
	1200			27	1012	NW	12	6	0.2	2	54	2	0.0
	1800			25	1013	NNW	13	7	0.2	2	75	5	0.0
26-02-25 (Wednesday)	0001	30	19	24	1012	N	13	7	0.2	2	88	8	0.0
	0600			23	1015	NNE	11	6	0.2	2	94	9	0.0
	1200			27	1012	NNW	13	8	0.3	2	53	2	0.0
	1800			25	1013	NW	15	10	0.3	2	76	6	0.0

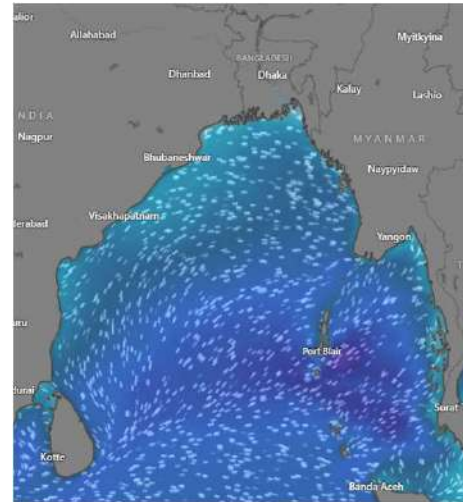
23 Feb 2025



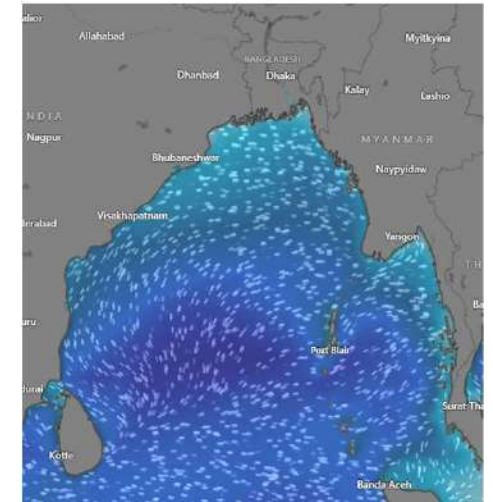
24 Feb 2025



25 Feb 2025



26 Feb 2025



Significant wave height (m)

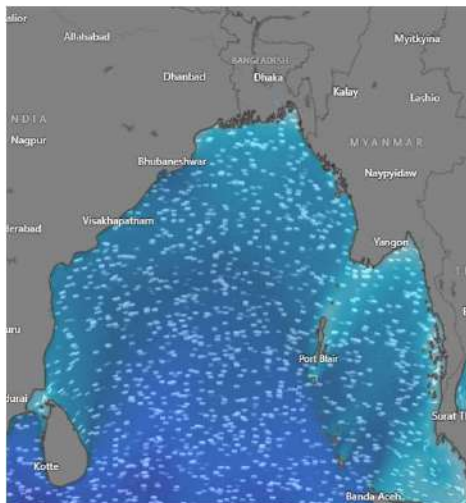


MARINE WEATHER FORECAST (19 to 26 Feb 2025) ABEAM TO KUTUBDIA (21° 51' N, 091° 40' E)

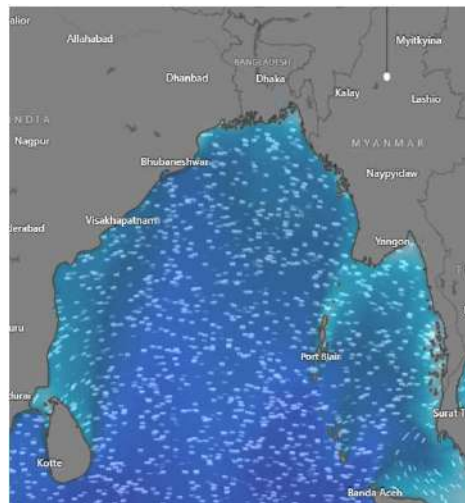


Date	Time	Air Temp (°C)		Sea Surface Temp (°C)	Baro Pressure (mbar)	Wind Direction	Wind Spd (kts)		Wave Ht (m)	Sea State	Humidity (%)	Prob of Rain (%)	Amount of Rain (mm)
		Max	Min				Gusting	Avg					
19-02-25 (Wednesday)	0001	30	18	23	1012	NNW	7	4	0.2	2	89	7	0.0
	0600			22	1015	NNE	6	3	0.2	2	93	8	0.0
	1200			25	1012	NNW	7	4	0.2	2	55	3	0.0
	1800			24	1013	SW	5	4	0.2	2	74	6	0.0
20-02-25 (Thursday)	0001	30	18	23	1012	NW	7	6	0.2	2	90	8	0.0
	0600			22	1015	NNE	10	7	0.3	2	94	9	0.0
	1200			25	1012	NNW	8	5	0.2	2	54	4	0.0
	1800			24	1013	NW	11	9	0.3	2	76	6	0.0
21-02-25 (Friday)	0001	30	18	23	1012	NW	15	12	0.3	2	89	8	0.0
	0600			22	1015	N	8	8	0.3	2	93	9	0.0
	1200			25	1012	NNW	10	6	0.4	2	54	2	0.0
	1800			24	1013	W	6	5	0.3	2	75	6	0.0
22-02-25 (Saturday)	0001	30	18	23	1012	W	10	6	0.4	2	90	7	0.0
	0600			22	1015	NNE	9	6	0.3	2	94	9	0.0
	1200			25	1012	NW	5	4	0.3	2	54	5	0.0
	1800			24	1013	W	10	7	0.4	2	74	8	0.0

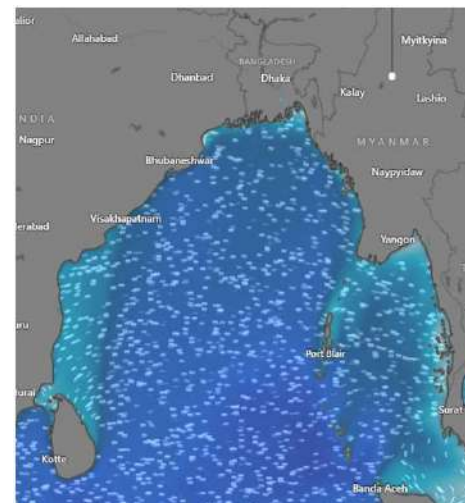
19 Feb 2025



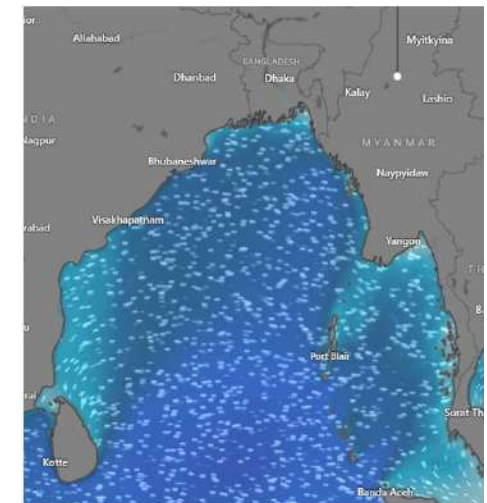
20 Feb 2025



21 Feb 2025



22 Feb 2025



Significant wave height (m)



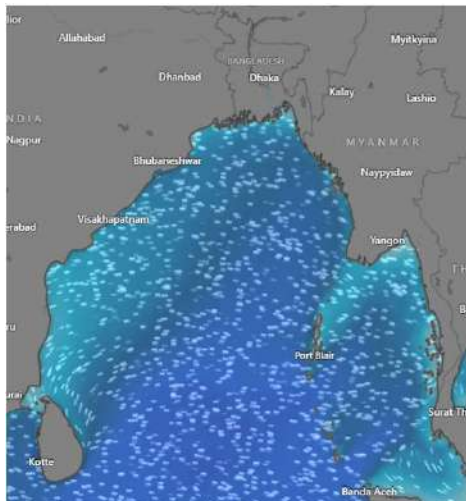
MARINE WEATHER FORECAST (19 to 26 Feb 2025)

ABEAM TO KUTUBDIA (21° 51' N, 091° 40' E)

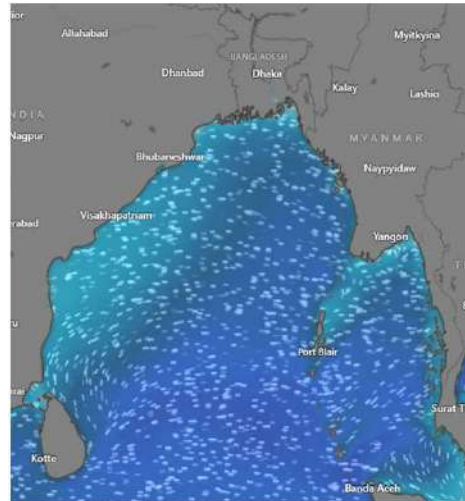


Date	Time	Air Temp (°C)		Sea Surface Temp (°C)	Baro Pressure (mbar)	Wind Direction	Wind Spd (kts)		Wave Ht (m)	Sea State	Humidity (%)	Prob of Rain (%)	Amount of Rain (mm)
		Max	Min				Gusting	Avg					
23-02-25 (Sunday)	0001	30	19	24	1012	NNW	10	6	0.4	2	88	7	0.0
	0600			23	1014	NNE	9	7	0.4	2	91	8	0.0
	1200			26	1011	NNW	5	4	0.3	2	55	3	0.0
	1800			24	1013	NW	10	7	0.3	2	72	5	0.0
24-02-25 (Monday)	0001	30	19	24	1012	NNW	16	12	0.3	2	87	8	0.0
	0600			23	1014	NNE	11	6	0.4	2	92	9	0.0
	1200			26	1011	NNW	11	9	0.4	2	53	4	0.0
	1800			24	1013	NW	15	8	0.3	2	74	7	0.0
25-02-25 (Tuesday)	0001	30	19	24	1012	N	13	10	0.3	2	88	8	0.0
	0600			23	1014	NNE	13	9	0.4	2	93	9	0.0
	1200			26	1011	NNW	12	6	0.3	2	55	3	0.0
	1800			24	1013	NNW	14	10	0.4	2	76	7	0.0
26-02-25 (Wednesday)	0001	30	19	24	1012	NNE	16	11	0.4	2	90	8	0.0
	0600			23	1014	NNE	14	9	0.4	2	94	9	0.0
	1200			27	1011	NNW	13	10	0.4	2	56	4	0.0
	1800			25	1013	NNW	12	9	0.4	2	75	7	0.0

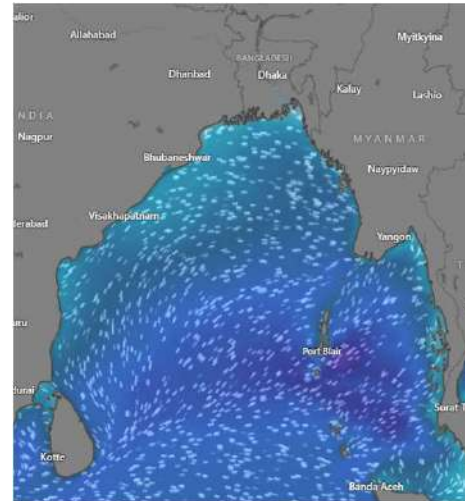
23 Feb 2025



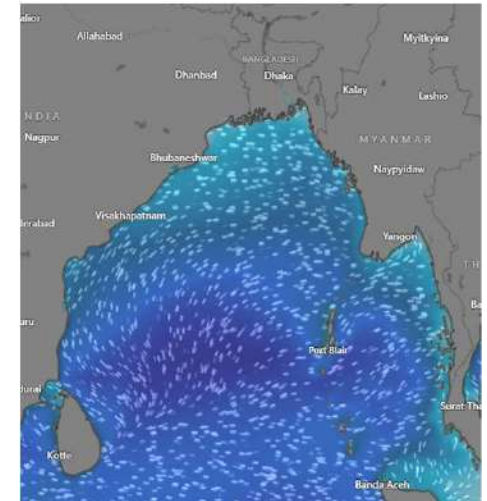
24 Feb 2025



25 Feb 2025



26 Feb 2025



Significant wave height (m)

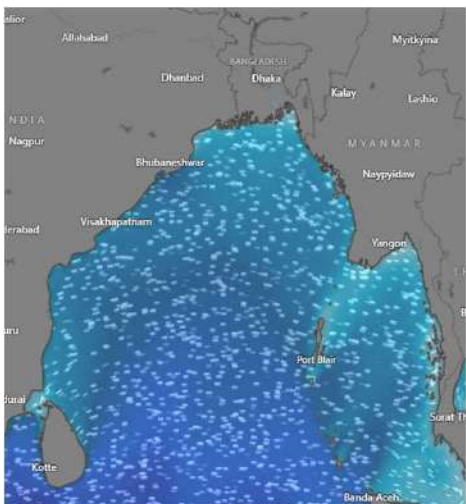


MARINE WEATHER FORECAST (19 to 26 Feb 2025) ABEAM TO ELEPHANT POINT (21° 11' N, 091° 52' E)

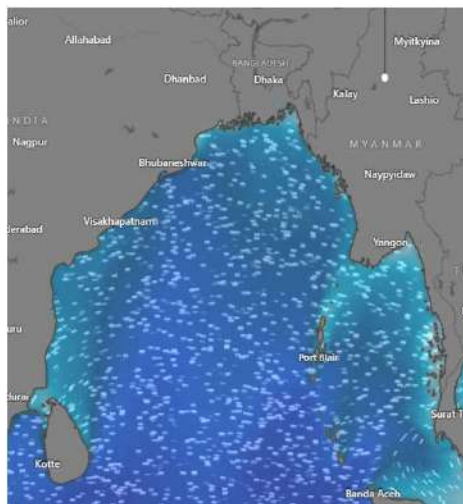


Date	Time	Air Temp (°C)		Sea Surface Temp (°C)	Baro Pressure (mbar)	Wind Direction	Wind Spd (kts)		Wave Ht (m)	Sea State	Humidity (%)	Prob of Rain (%)	Amount of Rain (mm)
		Max	Min				Gusting	Avg					
19-02-25 (Wednesday)	0001	30	18	23	1012	NNW	9	6	0.5	2	92	7	0.0
	0600			22	1014	N	10	7	0.6	3	95	8	0.0
	1200			26	1012	NNW	10	7	0.6	3	54	4	0.0
	1800			24	1013	NW	11	6	0.6	3	73	5	0.0
20-02-25 (Thursday)	0001	30	18	23	1012	NW	7	5	0.6	3	90	8	0.0
	0600			22	1014	N	13	9	0.7	3	93	9	0.0
	1200			26	1012	NNW	10	8	0.7	3	54	3	0.0
	1800			24	1013	NW	14	11	0.7	3	74	6	0.0
21-02-25 (Friday)	0001	30	18	23	1012	NW	14	10	0.8	3	89	7	0.0
	0600			22	1014	N	12	9	0.8	3	94	9	0.0
	1200			26	1012	NNW	11	8	0.9	3	53	5	0.0
	1800			24	1013	NW	10	7	0.9	3	76	7	0.0
22-02-25 (Saturday)	0001	30	18	23	1012	NNW	10	7	0.9	3	90	8	0.0
	0600			22	1014	NNE	11	7	0.9	3	94	9	0.0
	1200			26	1012	NNW	9	8	0.9	3	54	3	0.0
	1800			24	1013	NNW	12	9	0.9	3	75	6	0.0

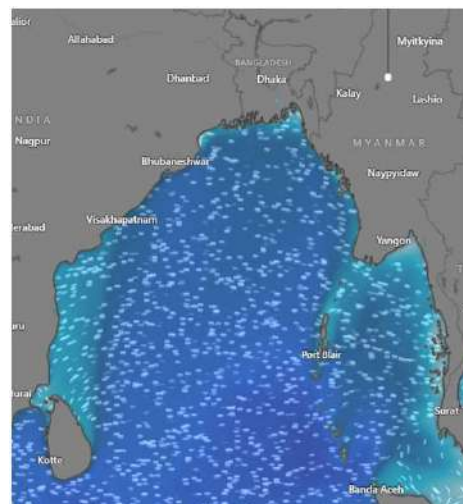
19 Feb 2025



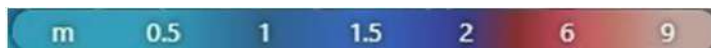
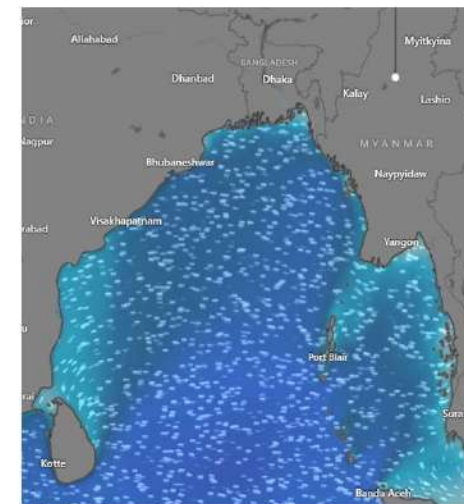
20 Feb 2025



21 Feb 2025



22 Feb 2025



Significant wave height (m)

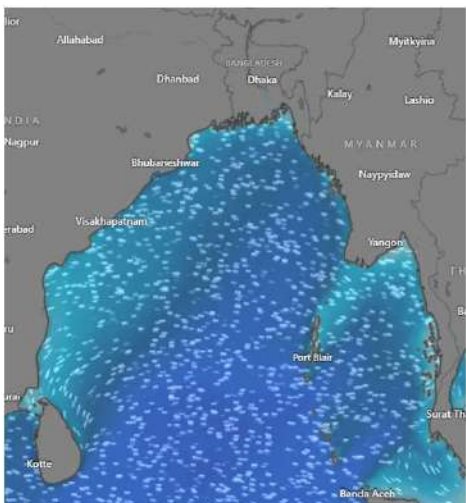


MARINE WEATHER FORECAST (19 to 26 Feb 2025) ABEAM TO ELEPHANT POINT (21° 11' N, 091° 52' E)

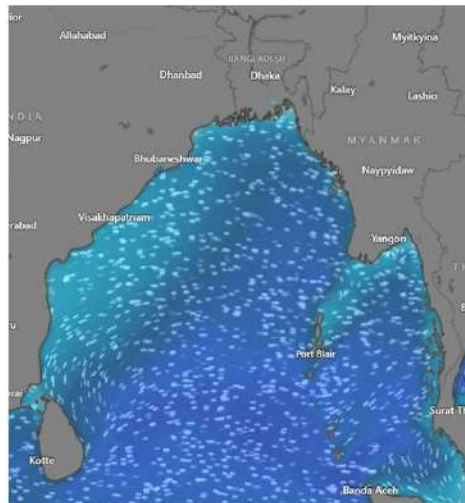


Date	Time	Air Temp (°C)		Sea Surface Temp (°C)	Baro Pressure (mbar)	Wind Direction	Wind Spd (kts)		Wave Ht (m)	Sea State	Humidity (%)	Prob of Rain (%)	Amount of Rain (mm)
		Max	Min				Gusting	Avg					
23-02-25 (Sunday)	0001	30	19	24	1012	N	11	7	0.8	3	90	7	0.0
	0600			23	1015	N	11	8	0.8	3	94	9	0.0
	1200			26	1012	NNW	12	9	0.8	3	54	4	0.0
	1800			24	1013	NW	15	9	0.8	3	73	5	0.0
24-02-25 (Monday)	0001	30	19	24	1012	NNW	10	8	0.8	3	89	7	0.0
	0600			23	1015	NNE	14	10	0.8	3	92	9	0.0
	1200			26	1012	NNW	15	11	0.8	3	53	3	0.0
	1800			24	1013	NNW	16	10	0.8	3	74	6	0.0
25-02-25 (Tuesday)	0001	30	19	24	1012	NNW	12	7	0.7	3	89	8	0.0
	0600			23	1015	NNE	15	11	0.7	3	94	9	0.0
	1200			26	1012	NNW	15	9	0.7	3	53	2	0.0
	1800			24	1013	NNW	16	11	0.7	3	75	7	0.0
26-02-25 (Wednesday)	0001	30	19	24	1012	N	17	14	0.7	3	90	8	0.0
	0600			23	1015	N	17	10	0.7	3	94	9	0.0
	1200			26	1012	NNW	14	11	0.7	3	53	4	0.0
	1800			24	1013	NNW	15	10	0.8	3	76	6	0.0

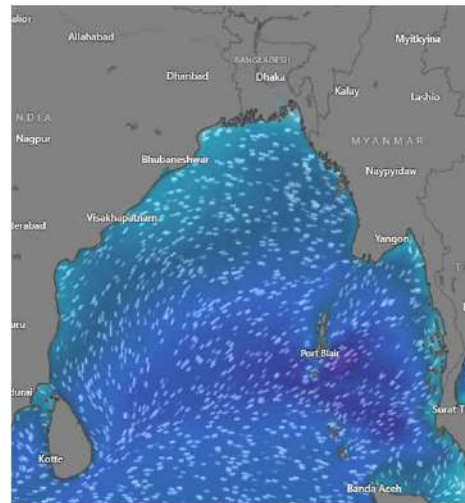
23 Feb 2025



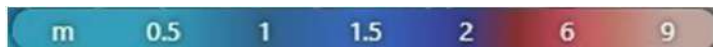
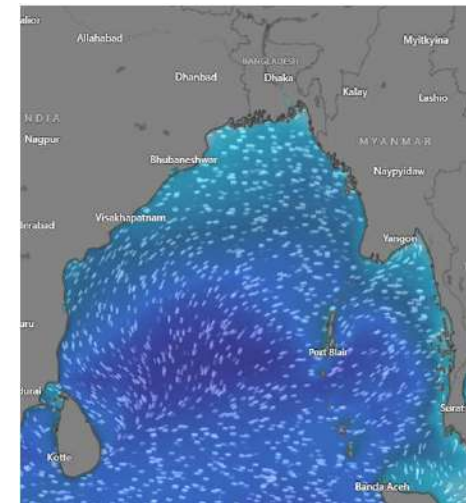
24 Feb 2025



25 Feb 2025



26 Feb 2025



Significant wave height (m)



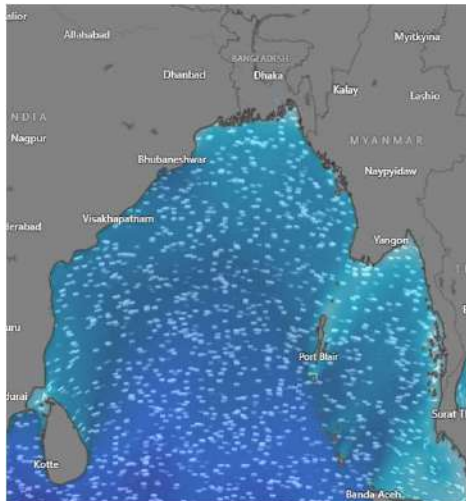
MARINE WEATHER FORECAST (19 to 26 Feb 2025)

ABEAM TO ST. MARTIN'S LIGHT HOUSE (20° 37' N, 092° 08' E)

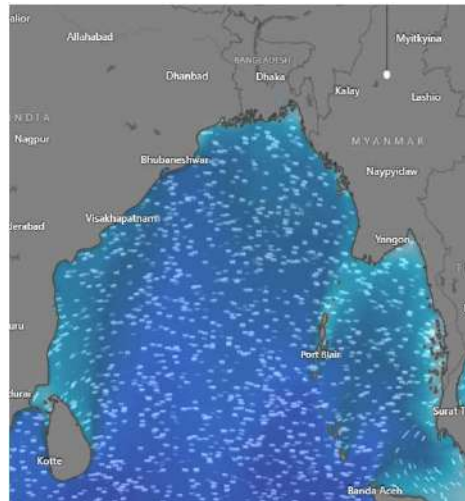


Date	Time	Air Temp (°C)		Sea Surface Temp (°C)	Baro Pressure (mbar)	Wind Direction	Wind Spd (kts)		Wave Ht (m)	Sea State	Humidity (%)	Prob of Rain (%)	Amount of Rain (mm)
		Max	Min				Gusting	Avg					
19-02-25 (Wednesday)	0001	30	19	23	1012	NNW	12	7	0.6	3	89	8	0.0
	0600			22	1015	N	13	8	0.7	3	92	9	0.0
	1200			26	1012	NNW	12	10	0.6	3	54	4	0.0
	1800			24	1013	NW	15	10	0.7	3	72	6	0.0
20-02-25 (Thursday)	0001	30	19	23	1012	NNW	13	10	0.7	3	89	8	0.0
	0600			22	1015	N	17	13	0.8	3	92	9	0.0
	1200			26	1012	NNW	14	6	0.8	3	54	3	0.0
	1800			24	1013	NW	16	13	0.8	3	72	6	0.0
21-02-25 (Friday)	0001	30	19	23	1012	NNW	17	11	0.9	3	89	7	0.0
	0600			22	1015	N	16	10	0.9	3	92	9	0.0
	1200			26	1012	NNW	11	9	0.9	3	53	4	0.0
	1800			24	1013	NW	14	10	0.9	3	75	5	0.0
22-02-25 (Saturday)	0001	30	19	23	1012	NNW	13	9	1.0	3	90	7	0.0
	0600			22	1015	N	13	10	1.0	3	94	9	0.0
	1200			26	1012	NNW	12	10	1.0	3	54	3	0.0
	1800			24	1013	NW	15	12	1.0	3	76	5	0.0

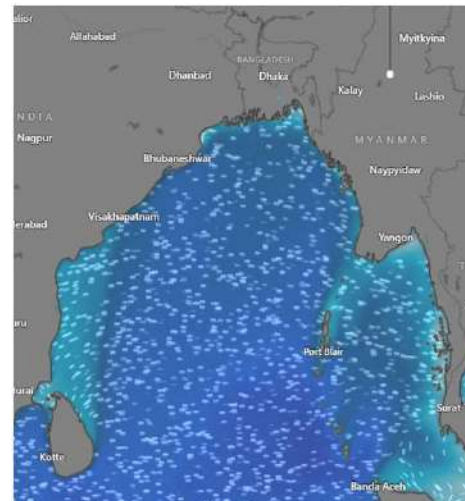
19 Feb 2025



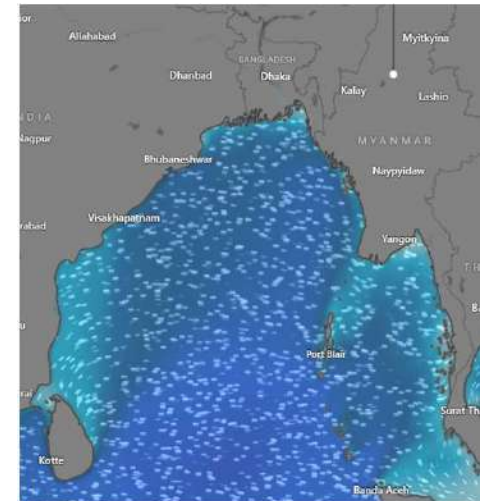
20 Feb 2025



21 Feb 2025



22 Feb 2025



Significant wave height (m)



MARINE WEATHER FORECAST (19 to 26 Feb 2025) ABEAM TO ST. MARTIN'S LIGHT HOUSE (20° 37' N, 092° 08' E)



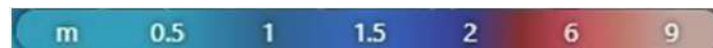
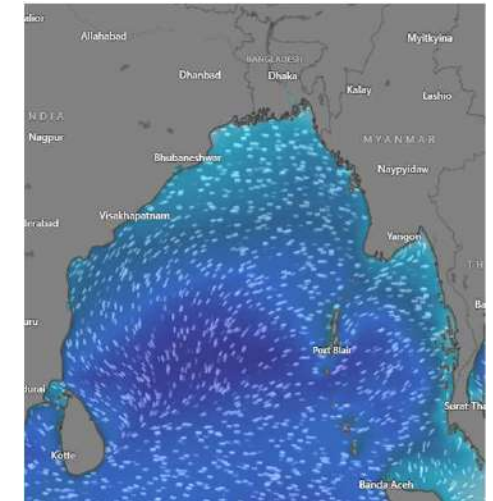
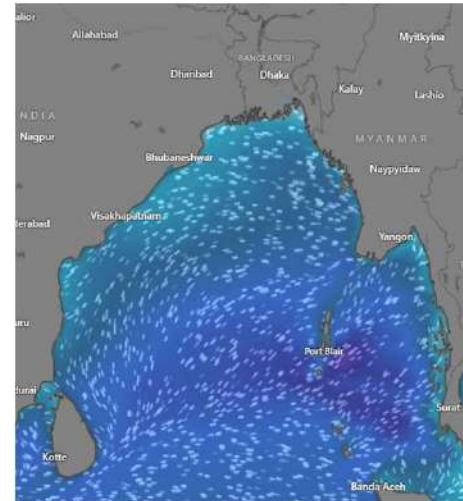
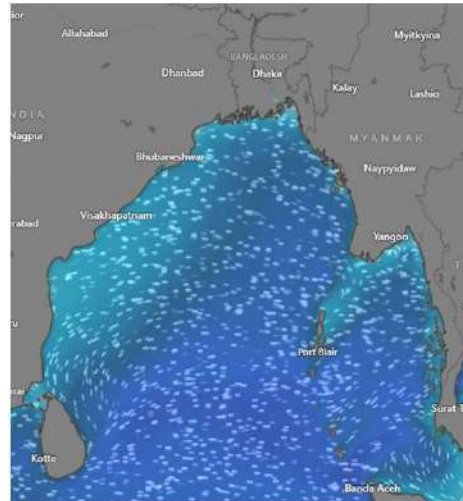
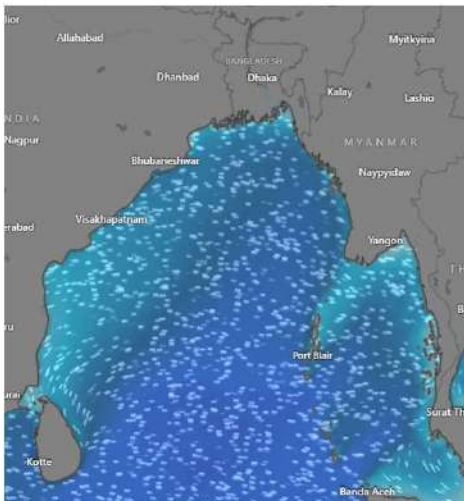
Date	Time	Air Temp (°C)		Sea Surface Temp (°C)	Baro Pressure (mbar)	Wind Direction	Wind Spd (kts)		Wave Ht (m)	Sea State	Humidity (%)	Prob of Rain (%)	Amount of Rain (mm)
		Max	Min				Gusting	Avg					
23-02-25 (Sunday)	0001	30	19	24	1012	NNW	14	10	1.0	3	90	7	0.0
	0600			23	1014	NNW	15	9	0.9	3	94	9	0.0
	1200			27	1010	NW	9	7	0.9	3	54	3	0.0
	1800			25	1013	NW	17	11	0.9	3	73	6	0.0
24-02-25 (Monday)	0001	30	19	24	1012	N	13	7	0.9	3	91	7	0.0
	0600			23	1014	N	15	10	0.8	3	95	9	0.0
	1200			27	1010	NNW	15	10	0.9	3	56	2	0.0
	1800			25	1013	NNE	17	13	0.8	3	75	6	0.0
25-02-25 (Tuesday)	0001	30	19	24	1012	N	15	11	0.8	3	89	8	0.0
	0600			23	1014	NNE	15	9	0.8	3	93	9	0.0
	1200			27	1010	NNW	13	7	0.8	3	54	3	0.0
	1800			25	1013	NW	14	10	0.8	3	75	7	0.0
26-02-25 (Wednesday)	0001	30	19	24	1012	N	13	10	0.8	3	89	8	0.0
	0600			23	1014	N	17	10	0.7	3	94	9	0.0
	1200			27	1010	NNW	14	9	0.8	3	54	3	0.0
	1800			25	1013	NNW	16	13	0.8	3	76	7	0.0

23 Feb 2025

24 Feb 2025

25 Feb 2025

26 Feb 2025



Significant wave height (m)



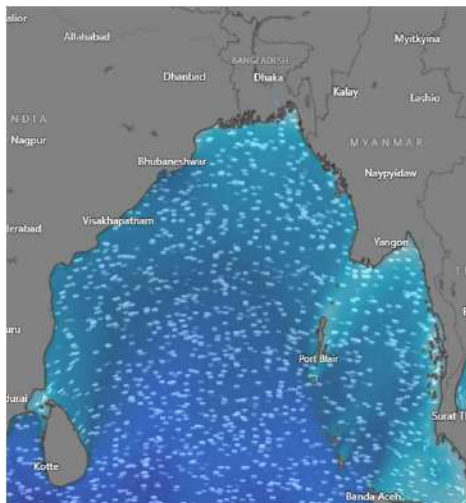
MARINE WEATHER FORECAST (19 to 26 Feb 2025)

PAYRA FAIRWAY (21° 22' N, 090° 6' E)

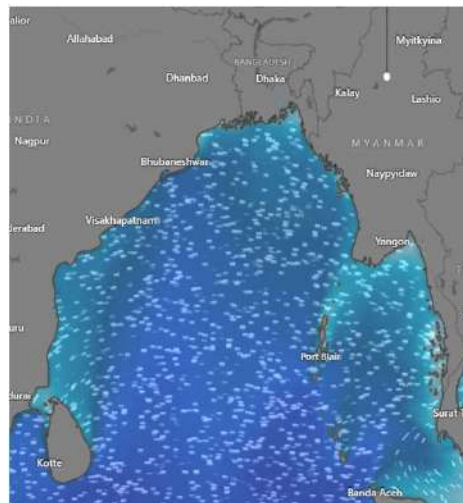


Date	Time	Air Temp (°C)		Sea Surface Temp (°C)	Baro Pressure (mbar)	Wind Direction	Wind Spd (kts)		Wave Ht (m)	Sea State	Humidity (%)	Prob of Rain (%)	Amount of Rain (mm)
		Max	Min				Gusting	Avg					
19-02-25 (Wednesday)	0001	30	18	23	1012	SW	9	7	0.6	3	90	8	0.0
	0600			22	1015	NW	9	5	0.6	3	94	9	0.0
	1200			26	1012	NW	7	5	0.6	3	55	3	0.0
	1800			24	1013	SW	5	3	0.6	3	76	6	0.0
20-02-25 (Thursday)	0001	30	18	23	1012	NNW	8	5	0.6	3	89	8	0.0
	0600			22	1015	NNE	8	6	0.7	3	91	9	0.0
	1200			26	1012	NNE	8	4	0.7	3	54	2	0.0
	1800			24	1013	W	9	5	0.8	3	72	6	0.0
21-02-25 (Friday)	0001	30	19	23	1012	NW	10	8	0.9	3	91	8	0.0
	0600			22	1015	N	13	7	0.9	3	93	9	0.0
	1200			26	1012	N	12	6	0.9	3	54	4	0.0
	1800			24	1013	SSW	7	5	0.9	3	75	6	0.0
22-02-25 (Saturday)	0001	30	19	23	1012	W	9	7	0.9	3	90	7	0.0
	0600			22	1015	NW	9	5	0.9	3	93	9	0.0
	1200			26	1012	NNW	7	6	0.9	3	54	3	0.0
	1800			24	1013	NNW	7	5	0.9	3	76	6	0.0

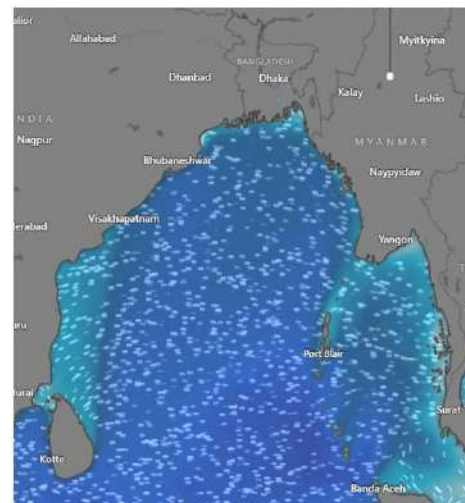
19 Feb 2025



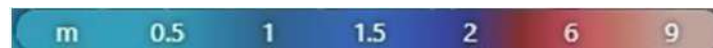
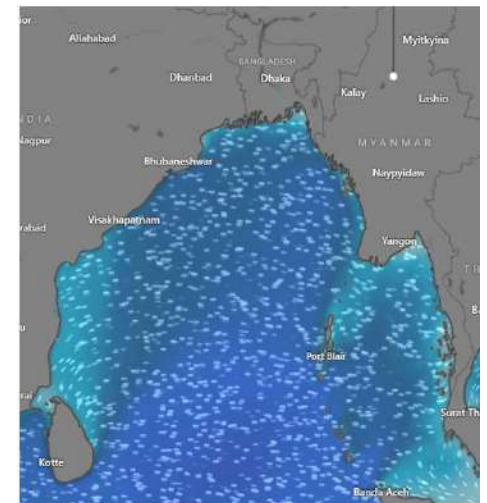
20 Feb 2025



21 Feb 2025



22 Feb 2025



Significant wave height (m)



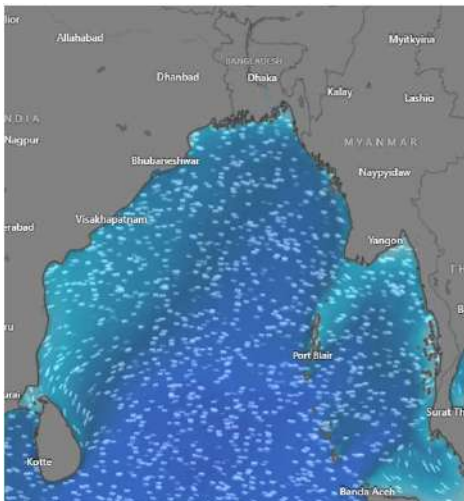
MARINE WEATHER FORECAST (19 to 26 Feb 2025)

PAYRA FAIRWAY (21° 22' N, 090° 6' E)

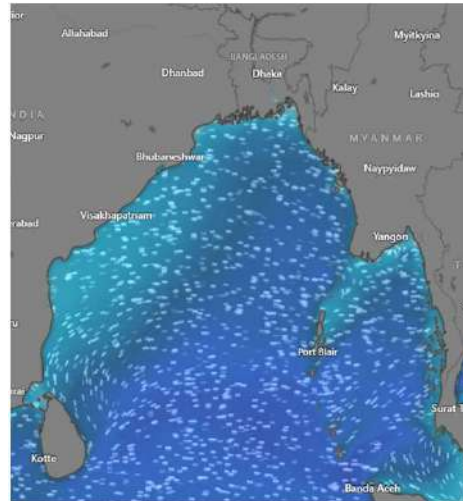


Date	Time	Air Temp (°C)		Sea Surface Temp (°C)	Baro Pressure (mbar)	Wind Direction	Wind Spd (kts)		Wave Ht (m)	Sea State	Humidity (%)	Prob of Rain (%)	Amount of Rain (mm)
		Max	Min				Gusting	Avg					
23-02-25 (Sunday)	0001	30	19	23	1012	W	12	9	0.9	3	90	6	0.0
	0600			22	1014	NNW	8	3	0.8	3	94	8	0.0
	1200			26	1011	NNW	8	6	0.9	3	54	3	0.0
	1800			24	1013	SW	10	3	0.9	3	76	5	0.0
24-02-25 (Monday)	0001	30	19	23	1012	NW	10	6	0.8	3	91	7	0.0
	0600			22	1014	N	13	10	0.9	3	94	9	0.0
	1200			26	1011	NNE	13	9	0.8	3	56	4	0.0
	1800			24	1013	SW	16	3	0.7	3	72	5	0.0
25-02-25 (Tuesday)	0001	30	19	23	1012	NW	6	4	0.7	3	91	7	0.0
	0600			22	1014	N	14	9	0.7	3	94	9	0.0
	1200			26	1011	NNE	13	8	0.7	3	56	4	0.0
	1800			24	1013	SSW	10	3	0.6	3	75	5	0.0
26-02-25 (Wednesday)	0001	30	19	23	1012	NW	10	7	0.7	3	92	6	0.0
	0600			22	1014	NNE	13	9	0.7	3	94	9	0.0
	1200			26	1011	NNE	12	9	0.6	3	56	3	0.0
	1800			24	1013	SSW	12	3	0.6	3	74	6	0.0

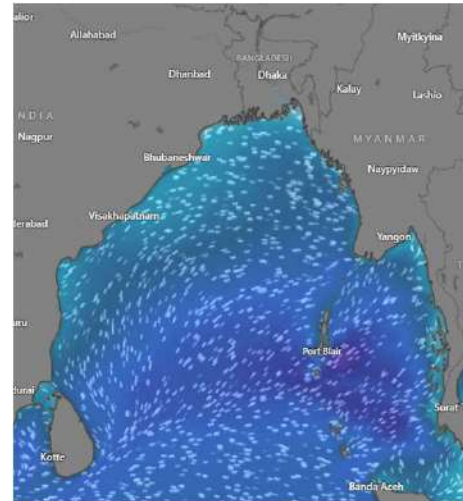
23 Feb 2025



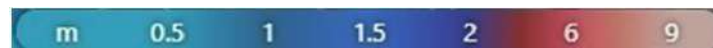
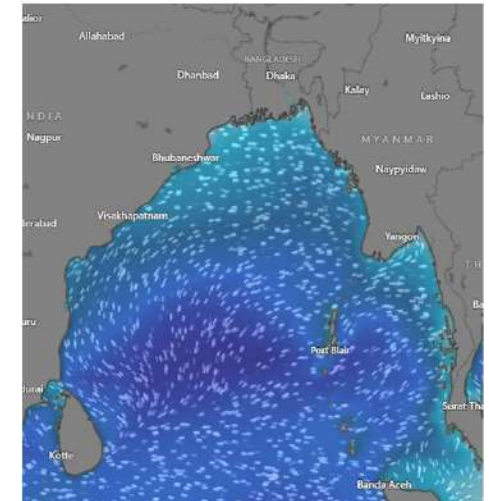
24 Feb 2025



25 Feb 2025



26 Feb 2025



Significant wave height (m)

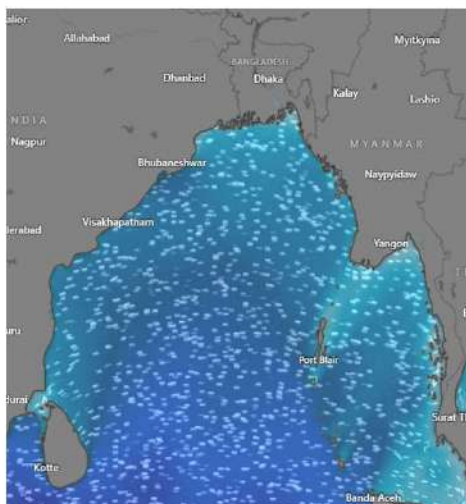


MARINE WEATHER FORECAST (19 to 26 Feb 2025) MONGLA FAIRWAY (21° 26' N, 089° 34' E)

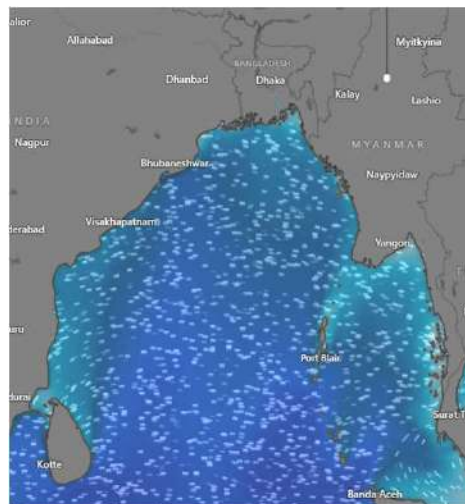


Date	Time	Air Temp (°C)		Sea Surface Temp (°C)	Baro Pressure (mbar)	Wind Direction	Wind Spd (kts)		Wave Ht (m)	Sea State	Humidity (%)	Prob of Rain (%)	Amount of Rain (mm)
		Max	Min				Gusting	Avg					
19-02-25 (Wednesday)	0001	29	18	23	1012	SSW	10	7	0.6	3	90	8	0.0
	0600			22	1014	SW	11	6	0.6	3	94	9	0.0
	1200			25	1011	NW	7	4	0.6	3	55	3	0.0
	1800			24	1013	S	7	5	0.7	3	76	6	0.0
20-02-25 (Thursday)	0001	30	18	23	1012	SW	9	4	0.7	3	91	7	0.0
	0600			22	1014	NE	5	3	0.8	3	95	9	0.0
	1200			25	1011	NE	7	2	0.8	3	54	4	0.0
	1800			24	1013	S	5	3	0.8	3	74	5	0.0
21-02-25 (Friday)	0001	30	19	23	1012	NNW	9	7	1.0	3	90	7	0.0
	0600			22	1014	N	12	6	1.0	3	94	9	0.0
	1200			25	1011	NNE	13	5	1.0	3	54	3	0.0
	1800			24	1013	SSW	9	7	1.0	3	74	5	0.0
22-02-25 (Saturday)	0001	30	19	23	1012	SW	12	6	1.0	3	91	6	0.0
	0600			22	1014	W	9	4	1.0	3	94	9	0.0
	1200			25	1011	NW	6	4	1.0	3	53	3	0.0
	1800			24	1013	SSW	6	3	1.0	3	74	7	0.0

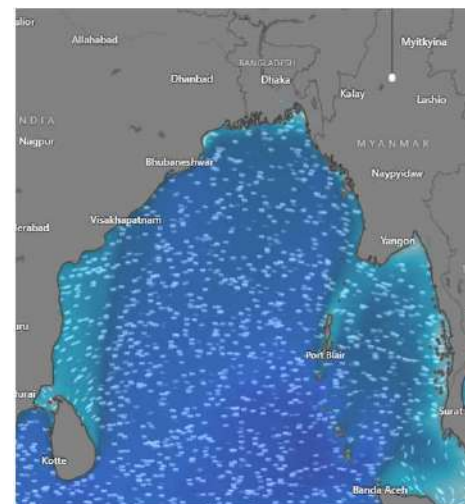
19 Feb 2025



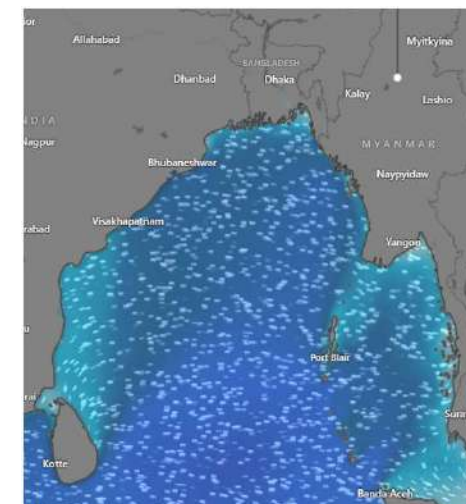
20 Feb 2025



21 Feb 2025



22 Feb 2025



Significant wave height (m)



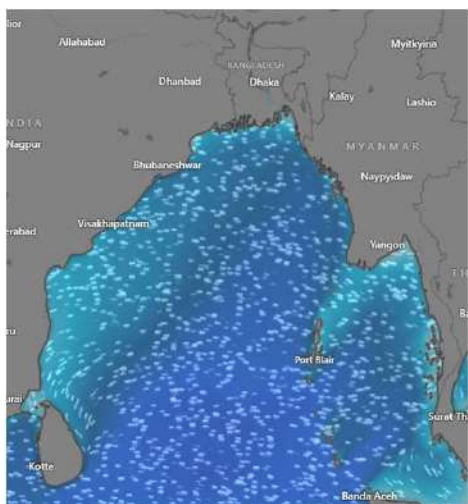
MARINE WEATHER FORECAST (19 to 26 Feb 2025)

MONGLA FAIRWAY (21° 26' N, 089° 34' E)

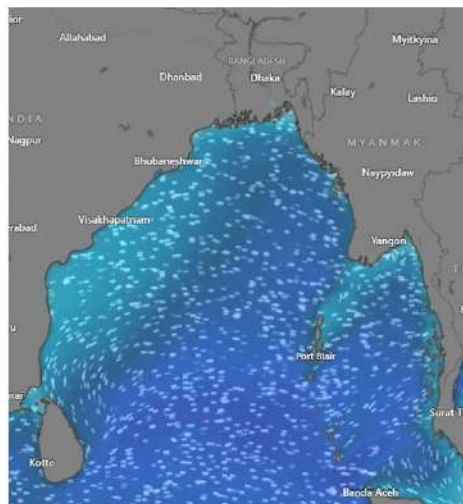


Date	Time	Air Temp (°C)		Sea Surface Temp (°C)	Baro Pressure (mbar)	Wind Direction	Wind Spd (kts)		Wave Ht (m)	Sea State	Humidity (%)	Prob of Rain (%)	Amount of Rain (mm)
		Max	Min				Gusting	Avg					
23-02-25 (Sunday)	0001	30	19	24	1012	W	11	5	0.9	3	89	7	0.0
	0600			23	1014	W	9	3	0.9	3	93	9	0.0
	1200			25	1011	SW	7	6	0.8	3	54	3	0.0
	1800			24	1012	SSW	8	2	0.8	3	74	7	0.0
24-02-25 (Monday)	0001	30	19	24	1012	N	10	4	0.9	3	91	7	0.0
	0600			23	1014	W	7	8	0.8	3	95	9	0.0
	1200			25	1011	NNE	7	6	0.7	3	54	4	0.0
	1800			24	1012	SSW	9	5	0.8	3	74	6	0.0
25-02-25 (Tuesday)	0001	30	19	24	1012	W	10	4	0.7	3	91	7	0.0
	0600			23	1014	N	7	8	0.7	3	95	9	0.0
	1200			25	1011	NNE	7	6	0.7	3	54	3	0.0
	1800			24	1012	SSW	9	5	0.7	3	72	6	0.0
26-02-25 (Wednesday)	0001	30	19	24	1012	NNW	12	8	0.7	3	90	6	0.0
	0600			23	1014	NNE	11	9	0.7	3	94	9	0.0
	1200			25	1011	NNE	12	7	0.6	3	53	2	0.0
	1800			24	1012	SSW	10	4	0.6	3	76	7	0.0

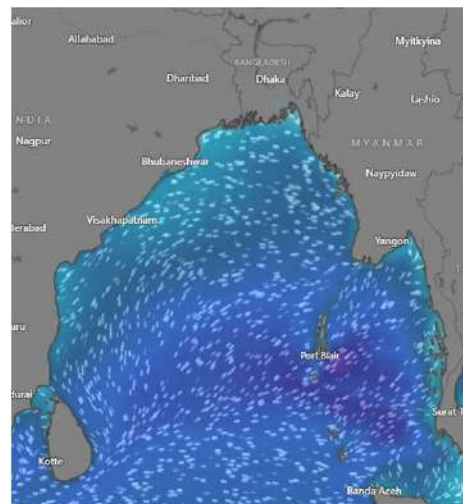
23 Feb 2025



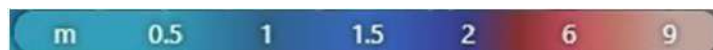
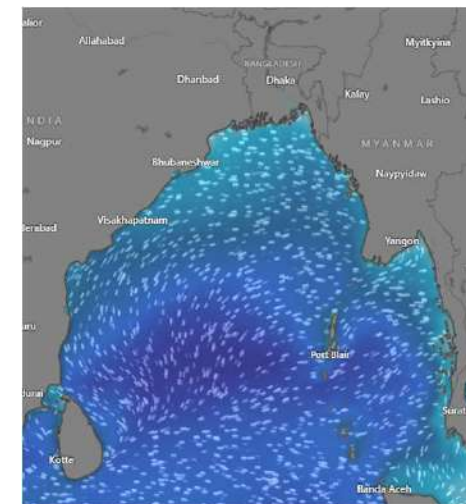
24 Feb 2025



25 Feb 2025



26 Feb 2025



Significant wave height (m)



MARINE WEATHER FORECAST (19 to 26 Feb 2025)

OUTER EEZ (18° 48' N, 090° 30' E)



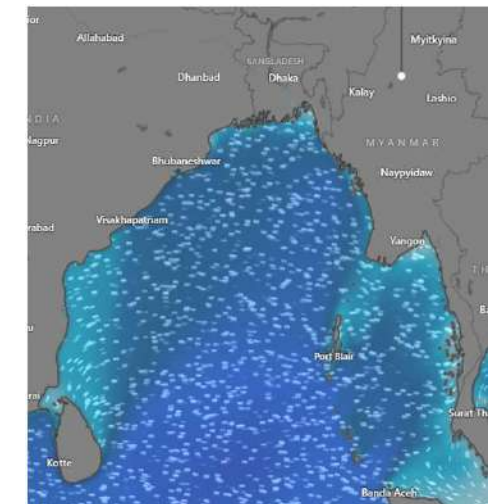
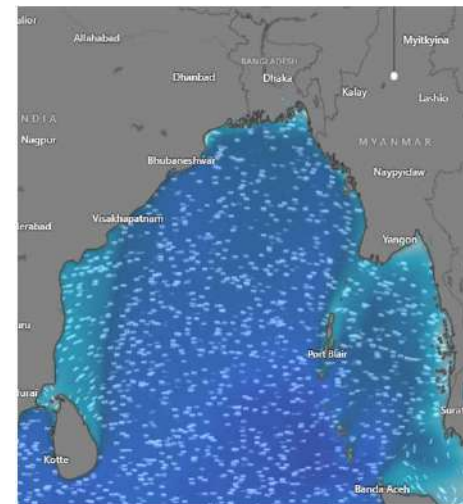
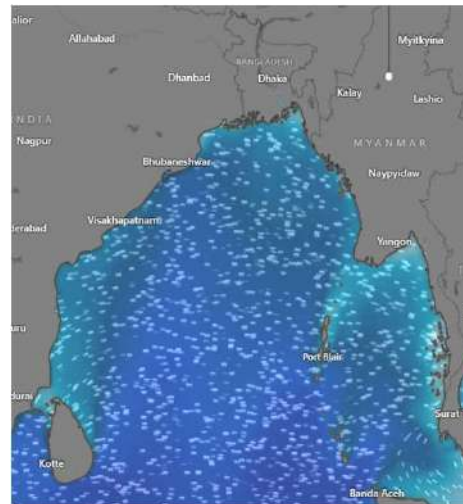
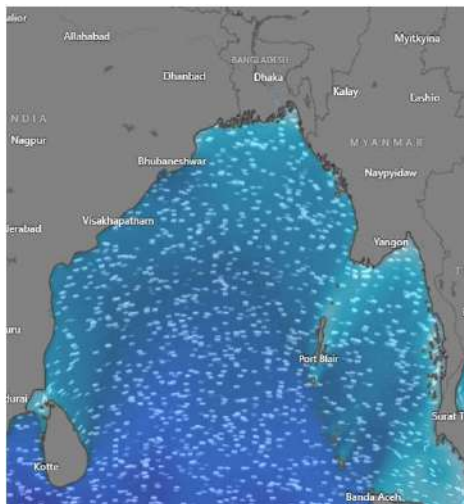
Date	Time	Air Temp (°C)		Sea Surface Temp (°C)	Baro Pressure (mbar)	Wind Direction	Wind Spd (kts)		Wave Ht (m)	Sea State	Humidity (%)	Prob of Rain (%)	Amount of Rain (mm)
		Max	Min				Gusting	Avg					
19-02-25 (Wednesday)	0001	30	19	24	1012	NNW	6	3	0.7	3	89	8	0.0
	0600			23	1015	NNW	7	4	0.8	3	94	9	0.0
	1200			26	1010	SSE	4	2	0.8	3	53	3	0.0
	1800			24	1013	NW	7	5	0.8	3	75	6	0.0
20-02-25 (Thursday)	0001	30	19	24	1012	N	6	3	0.9	3	89	8	0.0
	0600			23	1015	NNE	12	7	1.1	3	94	9	0.0
	1200			26	1010	E	10	5	1.1	3	54	3	0.0
	1800			24	1013	NNE	6	3	1.0	3	74	6	0.0
21-02-25 (Friday)	0001	30	19	24	1012	NNW	11	8	1.0	3	90	7	0.0
	0600			23	1015	N	13	9	1.1	3	94	9	0.0
	1200			26	1010	NNE	7	5	1.0	3	54	3	0.0
	1800			24	1013	NNE	9	6	1.1	3	76	6	0.0
22-02-25 (Saturday)	0001	30	19	24	1012	NNW	10	8	1.1	3	91	7	0.0
	0600			23	1015	N	10	6	1.1	3	94	9	0.0
	1200			26	1010	NNE	5	2	1.0	3	53	3	0.0
	1800			24	1013	NNE	8	5	1.0	3	75	5	0.0

19 Feb 2025

20 Feb 2025

21 Feb 2025

22 Feb 2025



Significant wave height (m)



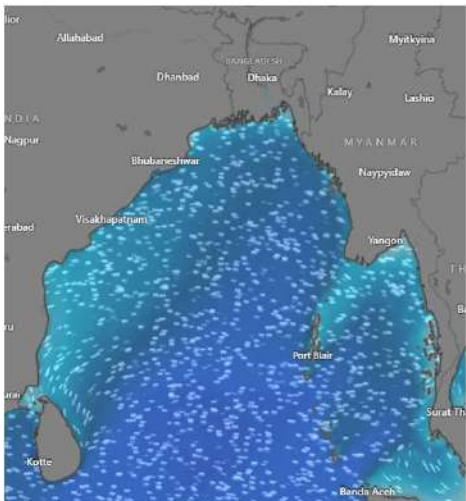
MARINE WEATHER FORECAST (19 to 26 Feb 2025)

OUTER EEZ (18° 48' N, 090° 30' E)

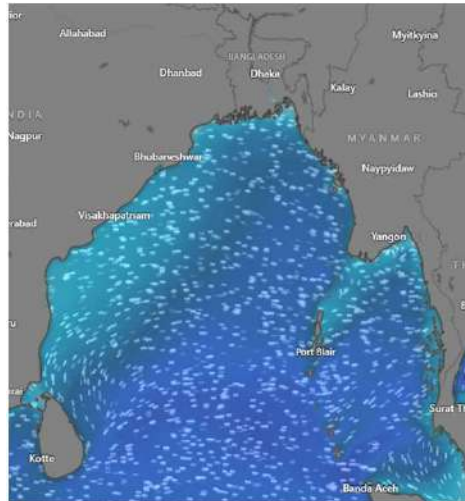


Date	Time	Air Temp (°C)		Sea Surface Temp (°C)	Baro Pressure (mbar)	Wind Direction	Wind Spd (kts)		Wave Ht (m)	Sea State	Humidity (%)	Prob of Rain (%)	Amount of Rain (mm)
		Max	Min				Gusting	Avg					
23-02-25 (Sunday)	0001	30	20	24	1012	NNW	8	3	1.0	3	90	8	0.0
	0600			23	1015	N	9	6	1.0	3	95	9	0.0
	1200			27	1012	NNW	7	5	0.9	3	54	4	0.0
	1800			25	1013	NNW	12	8	0.9	3	76	7	0.0
24-02-25 (Monday)	0001	30	20	24	1012	NNW	8	4	0.9	3	89	8	0.0
	0600			23	1015	NNE	13	7	1.0	3	94	9	0.0
	1200			27	1012	N	14	6	1.0	3	52	4	0.0
	1800			25	1013	N	11	8	1.0	3	74	6	0.0
25-02-25 (Tuesday)	0001	30	20	24	1012	NNW	10	3	0.9	3	90	7	0.0
	0600			23	1015	NNE	11	8	0.8	3	94	9	0.0
	1200			27	1012	N	15	9	0.8	3	53	3	0.0
	1800			25	1013	N	13	7	0.9	3	75	7	0.0
26-02-25 (Wednesday)	0001	30	20	24	1012	NNE	12	6	0.8	3	91	6	0.0
	0600			23	1015	N	11	8	0.9	3	94	9	0.0
	1200			27	1012	NNE	14	10	0.9	3	53	4	0.0
	1800			25	1013	NNE	14	9	1.0	3	76	6	0.0

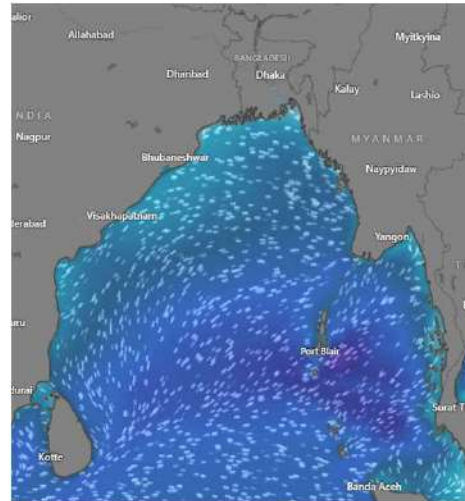
23 Feb 2025



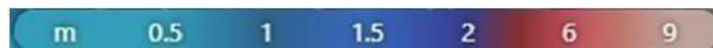
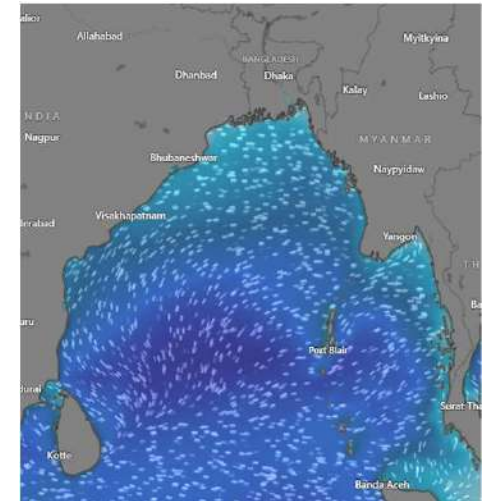
24 Feb 2025



25 Feb 2025



26 Feb 2025



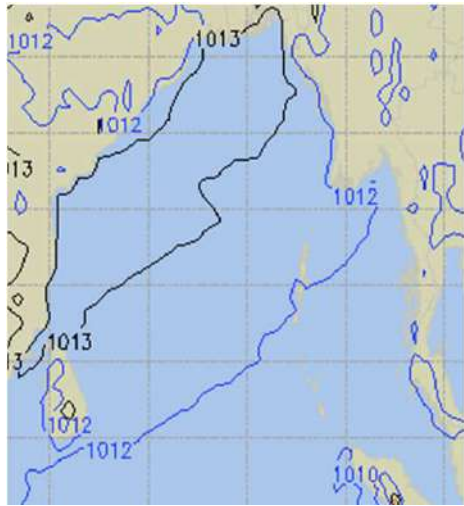
Significant wave height (m)



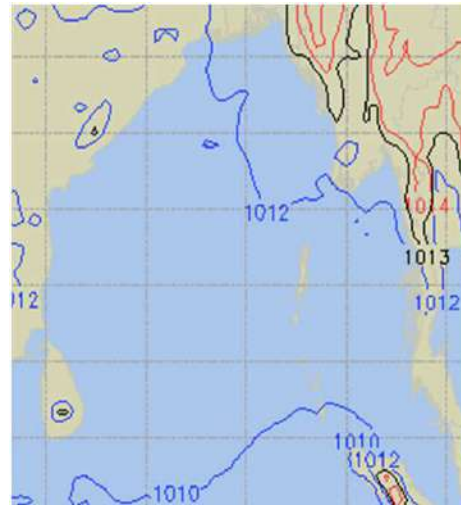
PREDICTED SURFACE PRESSURE FORECAST (19 to 25 Feb 2025)



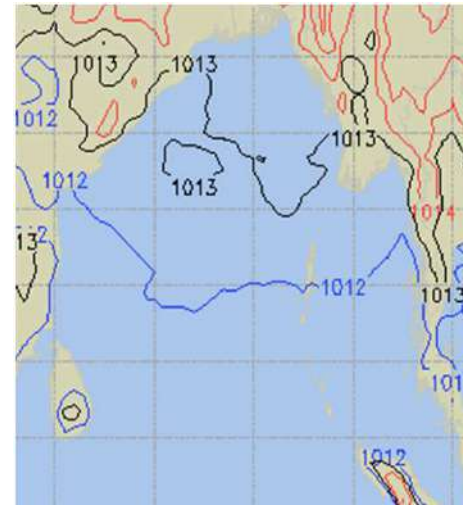
19 Feb 2025



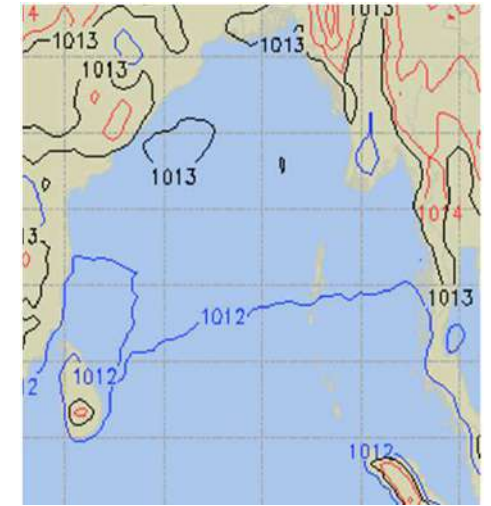
20 Feb 2025



21 Feb 2025



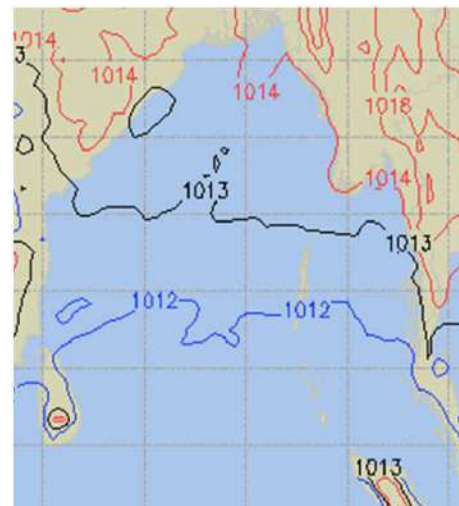
22 Feb 2025



23 Feb 2025



24 Feb 2025



25 Feb 2025

