



SUMMARY OF MARINE WEATHER FORECAST COASTAL AREA OF BANGLADESH DATE: 18-25 JULY 2024



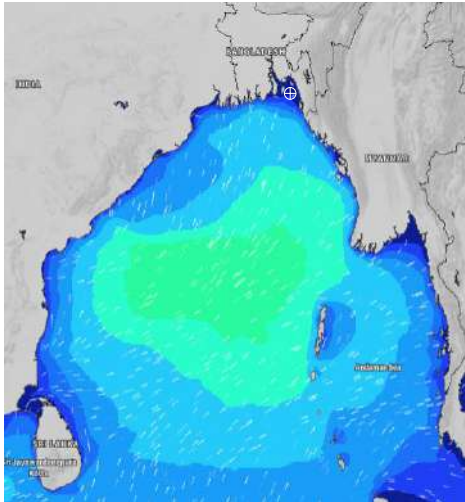
Fleet forecast	No storm warning. Monsoon is moderate over North Bay.
Wind direction, speed	South/south-easterly 16 kts, (Temporary gusting up to 24 kts).
Wave height & sea state	Wave height: 0.1 to 3.7 m (Sea state:1 to 5).
Sea surface temperature	27°C - 29°C (May remain nearly unchanged).
Baro pressure	994 - 1003 mb
Rainfall	Temporary rain/thunder showers over Bay of Bengal & adjoining area.
Outlook for 18 - 25 July 2024: Rainfall may increase at the end of said period.	

MARINE WEATHER FORECAST- NEAR AUTHORITY BUOY (Lat 22° 12' N, Long 091° 38' E)

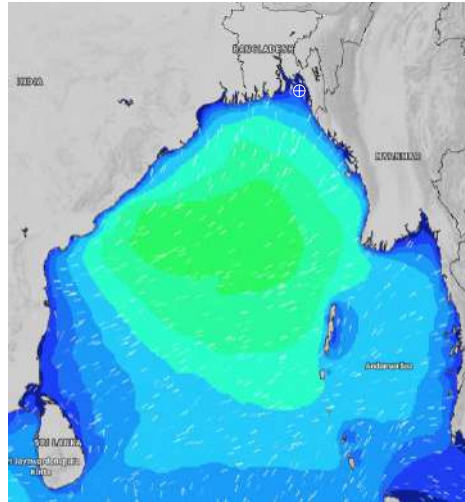
DATE : 18 to 25 July 2024

Date	Time	Max Wind Spd (kts)	Wind Direction	Wave Ht (m)	Sea State	Baro Pressure	Air Temp		Sea Surface Temp	Humidity (%)	Prb of Rain (%)	Sea State	Wave Ht (m)
							Max	Min					
18-07-24	0001	5	SSE	0.1	1	1002	33	27	28	89%	16% (0.0 mm)	0	0
	0600	6	E	0.1	1	1002			28	86%	11% (0.0 mm)	1	0 - 0.1
	1200	8	WSW	0.1	1	1001			29	73%	10% (0.0 mm)	2	0.1 - 0.5
	1800	15	SSW	0.4	2	998			29	85%	60% (0.8 mm)	3	0.5 - 1.25
19-07-24	0001	15	SSE	0.4	2	1001	33	27	28	89%	20% (0.0 mm)	4	1.25 - 2.5
	0600	11	SE	0.2	2	1000			27	90%	11% (0.0 mm)	5	2.5 - 4.0
	1200	13	SSW	0.3	2	998			29	70%	24% (0.0 mm)	6	4.0 - 6.0
	1800	18	S	0.5	2	997			29	83%	37% (0.2 mm)	7	6.0 - 9.0
20-07-24	0001	16	SSE	0.4	2	1000	32	27	28	87%	22% (0.0 mm)	8	9.0 - 14.0
	0600	13	SSE	0.3	2	1000			27	88%	24% (0.0 mm)	9	Over 14.0
	1200	14	SSW	0.3	2	1000			29	73%	66% (0.5 mm)		
	1800	16	S	0.4	2	999			28	84%	45% (0.3 mm)		
21-07-24	0001	17	SSE	0.4	2	1001	31	27	27	88%	43% (0.3 mm)		
	0600	17	SE	0.4	2	1001			27	90%	32% (0.2 mm)		
	1200	18	S	0.4	2	1001			29	78%	71% (0.5 mm)		
	1800	18	SSE	0.4	2	1000			28	87%	62% (0.4 mm)		

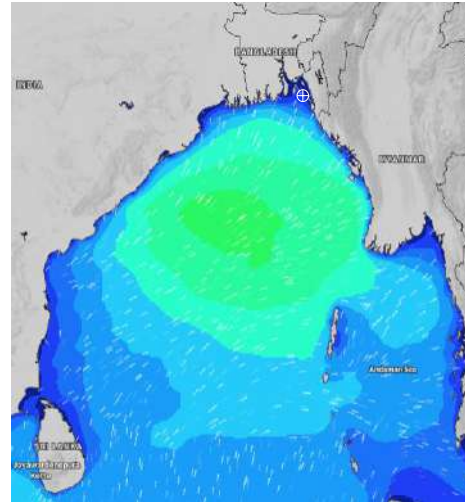
18 July 24 Thu (Probability 98%)



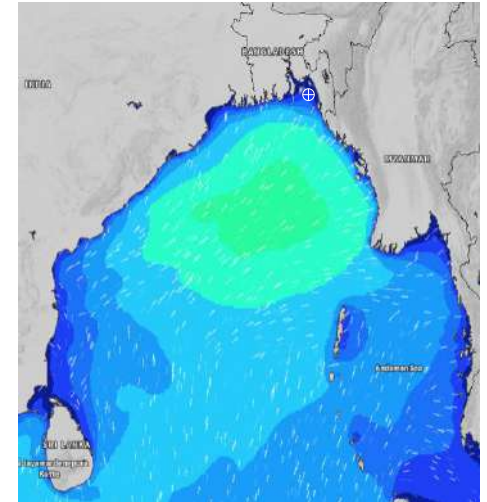
19 July 24 Fri (Probability 95%)



20 July 24 Sat Probability 90%



21 July 24 Sun (Probability 80%)



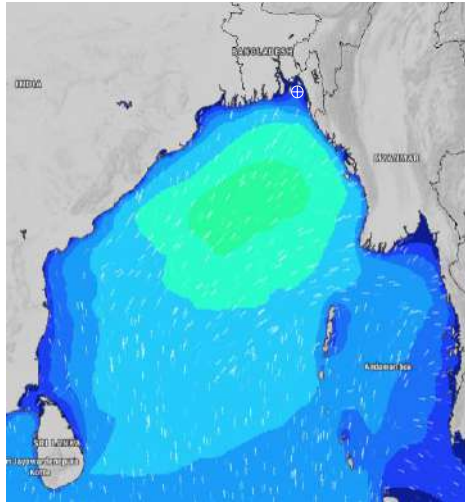
Significant wave height (m)

MARINE WEATHER FORECAST- NEAR AUTHORITY BUOY (Lat 22° 12' N, Long 091° 38' E)

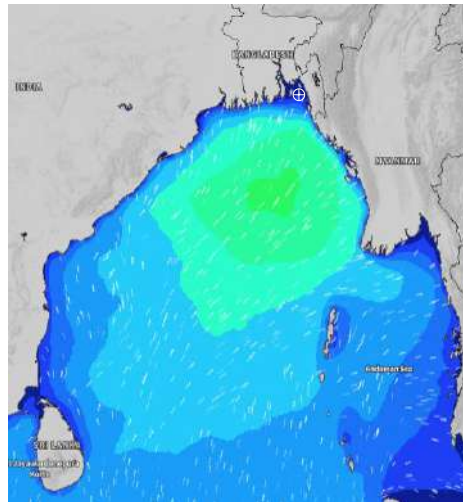
DATE : 18 to 25 July 2024

Date	Time	Max Wind Spd (kts)	Wind Direction	Wave Ht (m)	Sea State	Baro Pressure	Air Temp		Sea Surface Temp	Humidity (%)	Prob of Rain (%)	Sea State	Wave Ht (m)
							Max	Min					
22-07-24	0001	18	SE	0.4	2	1002	30	26	27	90%	56% (0.5 mm)	0	0
	0600	18	SE	0.4	2	1001			27	92%	70% (0.7 mm)	1	0 - 0.1
	1200	19	SSE	0.5	2	1002			28	84%	76% (0.9 mm)	2	0.1 - 0.5
	1800	17	SSE	0.4	2	1000			27	88%	58% (0.4 mm)	3	0.5 - 1.25
23-07-24	0001	16	SE	0.4	2	1001	29	26	27	93%	76% (0.5 mm)	4	1.25 - 2.5
	0600	14	S	0.4	2	999			27	95%	62% (0.4 mm)	5	2.5 - 4.0
	1200	13	S	0.3	2	998			27	87%	64% (0.5 mm)	6	4.0 - 6.0
	1800	8	S	0.2	2	998			27	90%	51% (0.4 mm)	7	6.0 - 9.0
24-07-24	0001	15	S	0.4	2	999	29	26	27	92%	78% (0.5 mm)	8	9.0 - 14.0
	0600	11	SW	0.3	2	998			27	94%	62% (0.4 mm)	9	Over 14.0
	1200	11	SSW	0.3	2	998			28	89%	64% (0.5 mm)		
	1800	14	S	0.3	2	997			27	90%	56% (0.4 mm)		
25-07-24	0001	9	S	0.2	2	998	30	26	27	93%	74% (0.5 mm)		
	0600	12	SE	0.3	2	996			26	94%	62% (0.4 mm)		
	1200	9	S	0.3	2	996			27	88%	60% (0.5 mm)		
	1800	10	S	0.2	2	994			28	90%	62% (0.4 mm)		

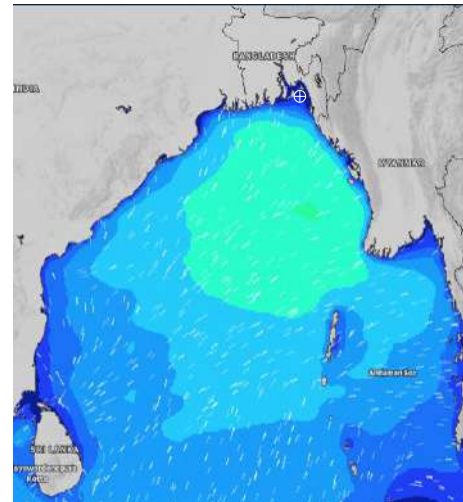
22 July 24 Mon (Probability 70%)



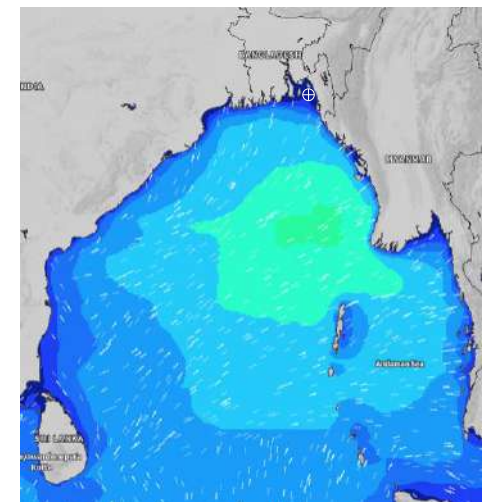
23 July 24 Tue (Probability 60%)



24 July 24 Wed Probability 50%



25 July 24 Thu (Probability 50%)



Significant wave height (m)

MARINE WEATHER FORECAST- 20 NM WEST OF ELEPHANT POINT (Lat 21° 10' N, Long 091° 42' E)

DATE : 18 to 25 July 2024

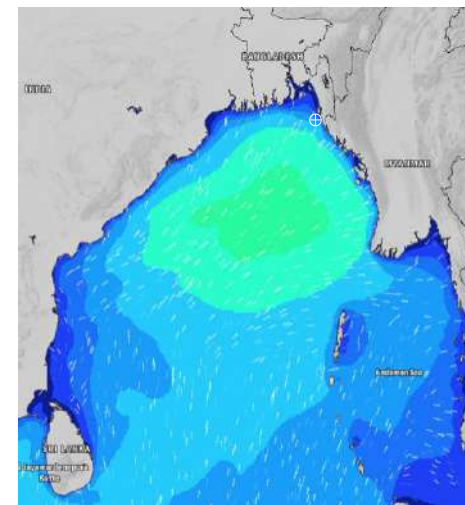
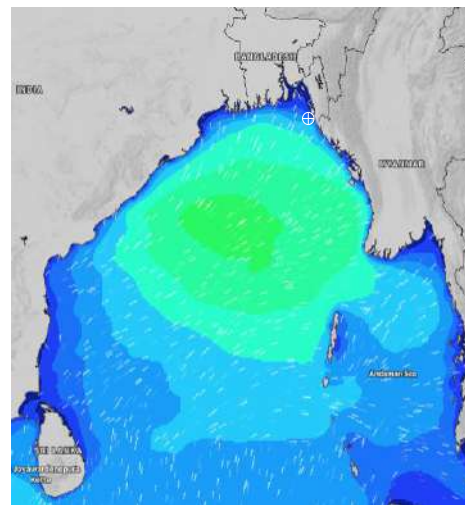
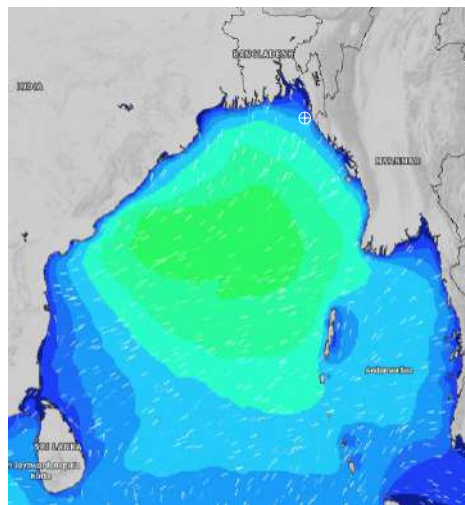
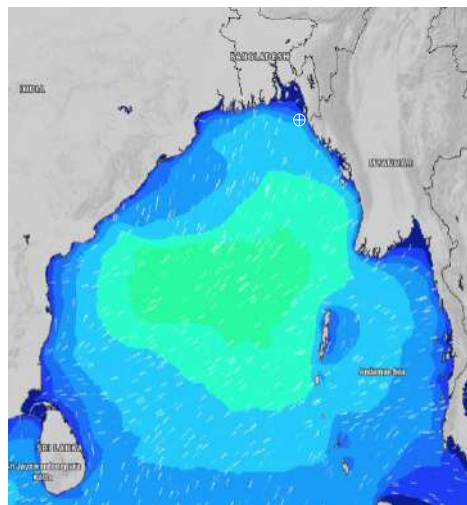
Date	Time	Max Wind Spd (kts)	Wind Direction	Wave Ht (m)	Sea State	Baro Pressure	Air Temp		Sea Surface Temp	Humidity (%)	Prob of Rain (%)	Sea State	Wave Ht (m)
							Max	Min					
18-07-24	0001	16	SE	1.6	4	1002	33	27	29	87%	13% (0.0 mm)	0	0
	0600	14	ESE	1.7	4	1001			28	83%	10% (0.0 mm)	1	0 - 0.1
	1200	18	SSE	1.9	4	1001			29	71%	20% (0.0 mm)	2	0.1 - 0.5
	1800	21	SSE	2.2	4	999			29	83%	17% (0.0 mm)	3	0.5 - 1.25
19-07-24	0001	21	SE	2.2	4	1000	32	27	28	86%	16% (0.2 mm)	4	1.25 - 2.5
	0600	20	SE	2.1	4	1000			28	88%	11% (0.0 mm)	5	2.5 - 4.0
	1200	19	SE	2.2	4	999			29	75%	48% (0.4 mm)	6	4.0 - 6.0
	1800	16	SSE	2.3	4	998			29	84%	33% (0.3 mm)	7	6.0 - 9.0
20-07-24	0001	16	SSE	2.3	4	1000	31	26	28	88%	55% (0.4 mm)	8	9.0 - 14.0
	0600	12	SSE	2.2	4	1000			28	90%	57% (0.5 mm)	9	Over 14.0
	1200	14	SSE	2.1	4	1001			28	80%	58% (0.4 mm)		
	1800	17	S	2.2	4	1000			28	87%	52% (0.3 mm)		
21-07-24	0001	18	S	2.4	4	1001	30	26	28	90%	71% (0.5 mm)		
	0600	16	S	2.3	4	1001			28	92%	62% (0.4 mm)		
	1200	17	S	2.2	4	1001			28	85%	58% (0.4 mm)		
	1800	18	S	2.3	4	1000			29	89%	52% (0.3 mm)		

18 July 24 Thu (Probability 98%)

19 July 24 Fri (Probability 95%)

20 July 24 Sat Probability 90%

21 July 24 Sun (Probability 80%)



Significant wave height (m)

MARINE WEATHER FORECAST- 20 NM WEST OF ELEPHANT POINT (Lat 21° 10' N, Long 091° 42' E)

DATE : 18 to 25 July 2024

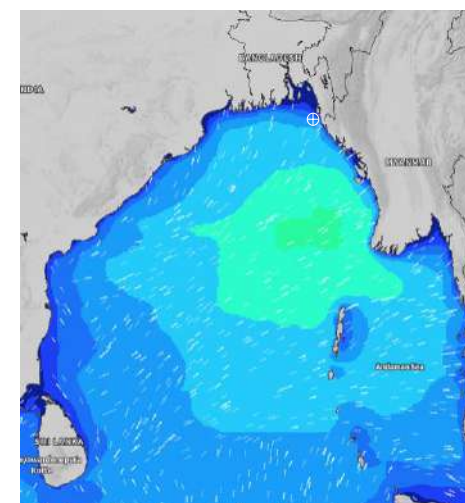
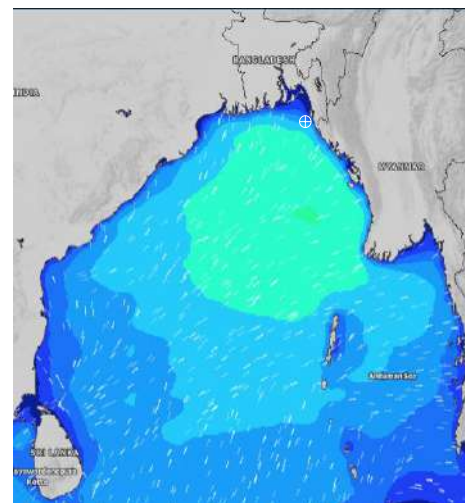
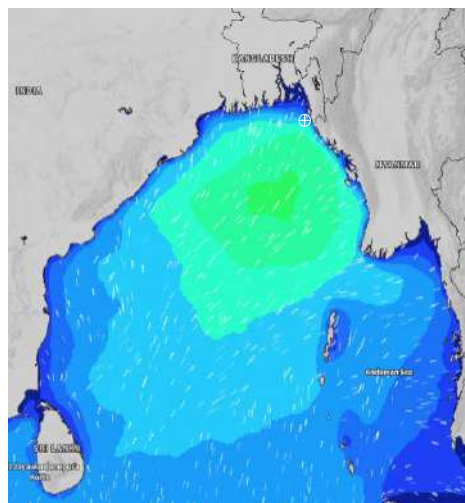
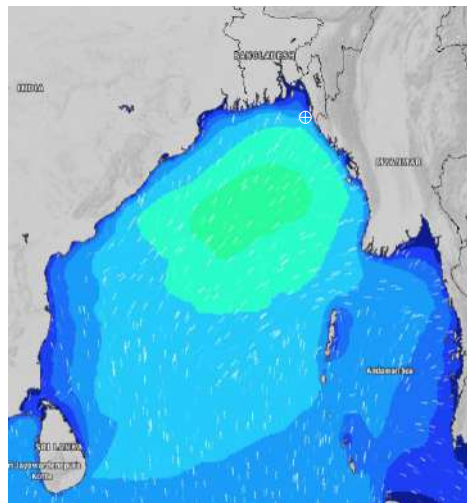
Date	Time	Max Wind Spd (kts)	Wind Direction	Wave Ht (m)	Sea State	Baro Pressure	Air Temp		Sea Surface Temp	Humidity (%)	Prob of Rain (%)	Sea State	Wave Ht (m)
							Max	Min					
22-07-24	0001	20	S	2.4	4	1002	29	26	28	92%	78% (0.5 mm)	0	0
	0600	19	S	2.4	4	1001			28	93%	62% (0.4 mm)	1	0 - 0.1
	1200	20	S	2.3	4	1002			28	88%	45% (0.4 mm)	2	0.1 - 0.5
	1800	20	SSW	2.5	4	1000			28	91%	60% (0.7 mm)	3	0.5 - 1.25
23-07-24	0001	21	SSW	2.6	5	1001	29	26	28	92%	76% (0.5 mm)	4	1.25 - 2.5
	0600	22	SSW	2.7	5	999			28	93%	62% (0.4 mm)	5	2.5 - 4.0
	1200	21	SW	2.7	5	999			28	88%	45% (0.4 mm)	6	4.0 - 6.0
	1800	17	SW	2.6	5	998			28	90%	60% (0.7 mm)	7	6.0 - 9.0
24-07-24	0001	17	WSW	2.5	4	1000	29	26	28	91%	74% (0.5 mm)	8	9.0 - 14.0
	0600	18	WSW	2.5	4	998			28	93%	62% (0.4 mm)	9	Over 14.0
	1200	15	SW	2.3	4	998			28	88%	60% (0.5 mm)		
	1800	14	SW	2.2	4	997			27	89%	62% (0.4 mm)		
25-07-24	0001	13	SW	2.1	4	998	29	26	27	92%	56% (0.4 mm)		
	0600	8	SW	1.9	4	996			26	94%	60% (0.6 mm)		
	1200	8	SSW	1.9	4	996			27	87%	45% (0.4 mm)		
	1800	8	SSW	1.8	4	995			28	90%	60% (0.7 mm)		

22 July 24 Mon (Probability 70%)

23 July 24 Tue (Probability 60%)

24 July 24 Wed Probability 50%

25 July 24 Thu (Probability 50%)



Significant wave height (m)

MARINE WEATHER FORECAST- 15 NM WEST OF ST. MARTIN'S LIGHT HOUSE (Lat 20° 37'N, Long 092° 03'E)

DATE : 18 to 25 July 2024

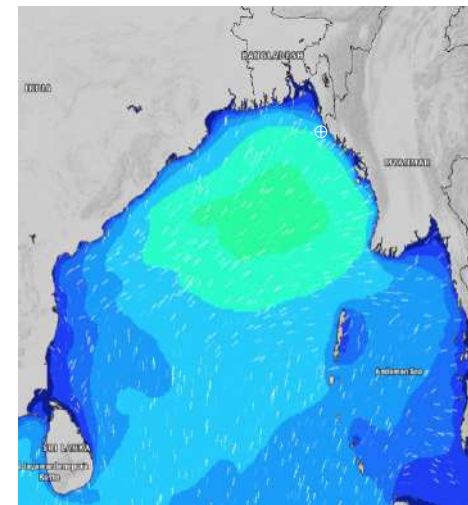
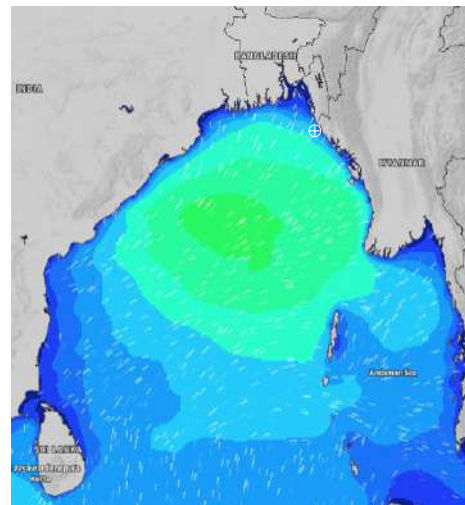
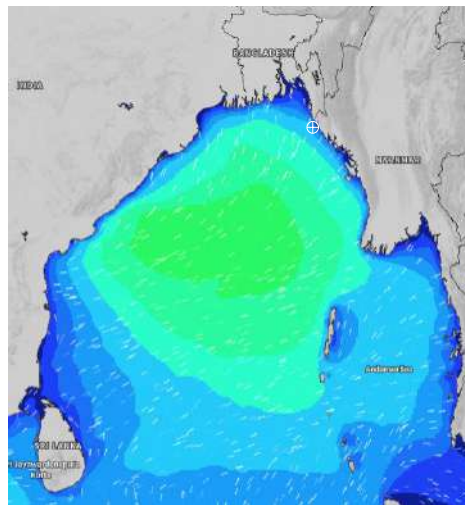
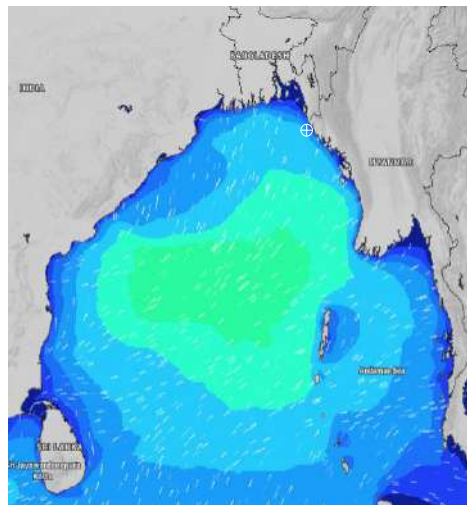
Date	Time	Max Wind Spd (kts)	Wind Direction	Wave Ht (m)	Sea State	Baro Pressure	Air Temp		Sea Surface Temp	Humidity (%)	Prob of Rain(%)	Sea State	Wave Ht (m)
							Max	Min					
18-07-24	0001	23	ESE	2.2	4	1002	31	27	29	90%	21% (0.0 mm)	0	0
	0600	24	ESE	2.4	4	1000			28	86%	10% (0.0 mm)	1	0 - 0.1
	1200	23	SE	2.6	5	1001			28	78%	38% (0.1 mm)	2	0.1 - 0.5
	1800	20	SSE	2.7	5	999			28	85%	24% (0.0 mm)	3	0.5 - 1.25
19-07-24	0001	18	SSE	2.6	5	1001	30	26	28	90%	42% (0.3 mm)	4	1.25 - 2.5
	0600	14	SSE	2.5	4	1000			28	92%	48% (0.4 mm)	5	2.5 - 4.0
	1200	14	SSE	2.7	5	1000			28	85%	64% (0.5 mm)	6	4.0 - 6.0
	1800	14	S	2.9	5	998			28	88%	51% (0.4 mm)	7	6.0 - 9.0
20-07-24	0001	17	SSW	3.1	5	1001	29	26	29	91%	82% (0.9 mm)	8	9.0 - 14.0
	0600	13	SSW	3.0	5	1000			28	93%	72% (0.7 mm)	9	Over 14.0
	1200	15	SSW	2.9	5	1002			28	88%	74% (0.8 mm)		
	1800	18	SSW	3.0	5	1000			28	91%	72% (0.7 mm)		
21-07-24	0001	20	SSW	3.2	5	1002	29	26	28	91%	82% (0.9 mm)		
	0600	17	SSW	3.2	5	1000			28	93%	72% (0.7 mm)		
	1200	17	SSW	3.0	5	1002			28	88%	74% (0.8 mm)		
	1800	20	SSW	3.1	5	1000			28	90%	72% (0.7 mm)		

18 July 24 Thu (Probability 98%)

19 July 24 Fri (Probability 95%)

20 July 24 Sat Probability 90%

21 July 24 Sun (Probability 80%)



Significant wave height (m)

MARINE WEATHER FORECAST- 15 NM WEST OF ST. MARTIN'S LIGHT HOUSE (Lat 20° 37'N, Long 092° 03'E)

DATE : 18 to 25 July 2024

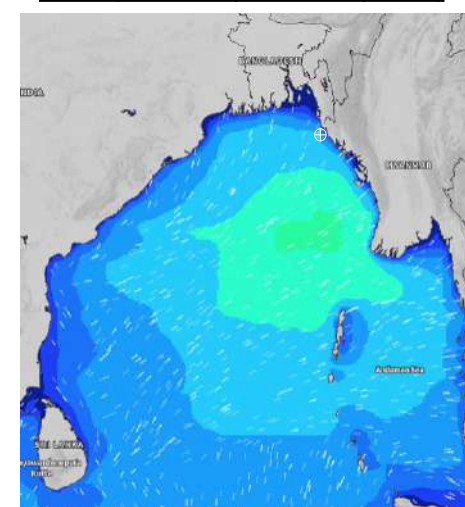
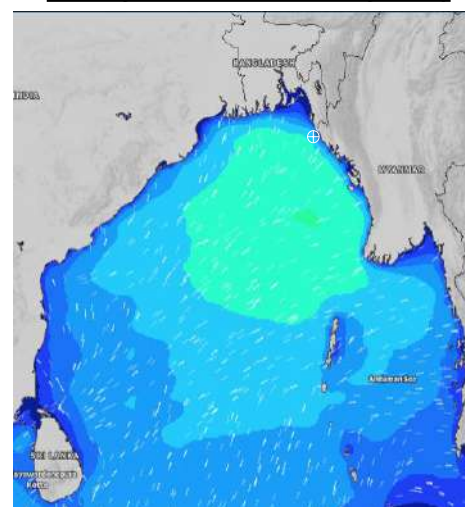
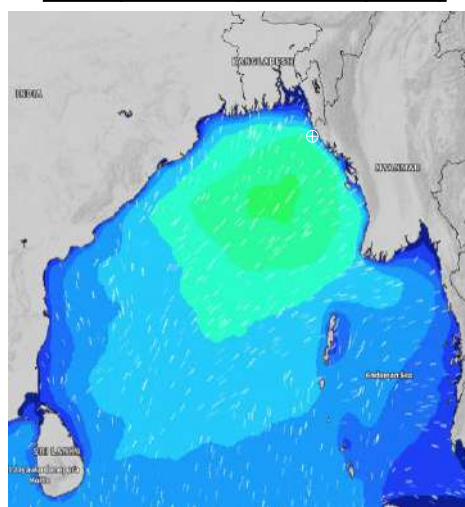
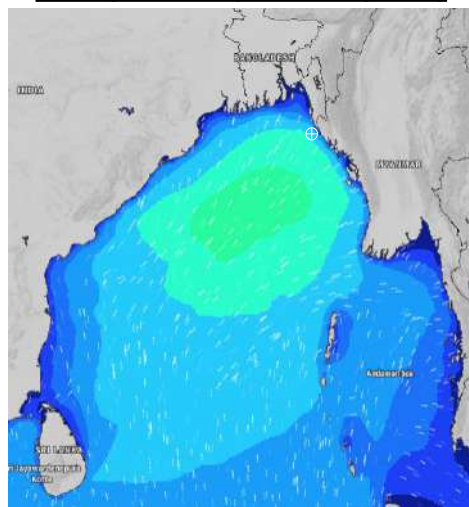
Date	Time	Max Wind Spd (kts)	Wind Direction	Wave Ht (m)	Sea State	Baro Pressure	Air Temp		Sea Surface Temp	Humidity (%)	Prob of Rain (%)	Sea State	Wave Ht (m)
							Max	Min					
22-07-24	0001	22	SSW	3.2	5	1003	28	26	28	92%	64% (0.6 mm)	0	0
	0600	20	SSW	3.2	5	1001			28	93%	75% (0.7 mm)	1	0 - 0.1
	1200	20	S	3.1	5	1003			27	91%	64% (0.6 mm)	2	0.1 - 0.5
	1800	23	SSW	3.3	5	1001			28	91%	75% (0.7 mm)	3	0.5 - 1.25
23-07-24	0001	23	SSW	3.5	5	1003	28	26	28	92%	76% (0.5 mm)	4	1.25 - 2.5
	0600	24	SSW	3.6	5	1000			28	93%	62% (0.4 mm)	5	2.5 - 4.0
	1200	24	SSW	3.7	5	1001			28	90%	64% (0.5 mm)	6	4.0 - 6.0
	1800	22	SW	3.6	5	999			28	91%	51% (0.4 mm)	7	6.0 - 9.0
24-07-24	0001	18	SW	3.4	5	1001	28	26	28	92%	78% (0.5 mm)	8	9.0 - 14.0
	0600	20	WSW	3.3	5	999			28	93%	62% (0.4 mm)	9	Over 14.0
	1200	17	WSW	3.1	5	1000			28	91%	64% (0.5 mm)		
	1800	18	WSW	2.9	5	998			28	91%	56% (0.4 mm)		
25-07-24	0001	14	WSW	2.8	5	999	28	26	27	92%	74% (0.5 mm)		
	0600	14	WSW	2.6	5	997			27	93%	62% (0.4 mm)		
	1200	10	W	2.6	5	997			26	90%	64% (0.6 mm)		
	1800	12	WSW	2.5	4	995			28	90%	75% (0.7 mm)		

22 July 24 Mon (Probability 70%)

23 July 24 Tue (Probability 60%)

24 July 24 Wed Probability 50%

25 July 24 Thu (Probability 50%)



Significant wave height (m)

MARINE WEATHER FORECAST- 40 NM ESE OF PAYRA FAIRWAY (Lat 21° 07' N, Long 090° 45' E)

DATE : 18 to 25 July 2024

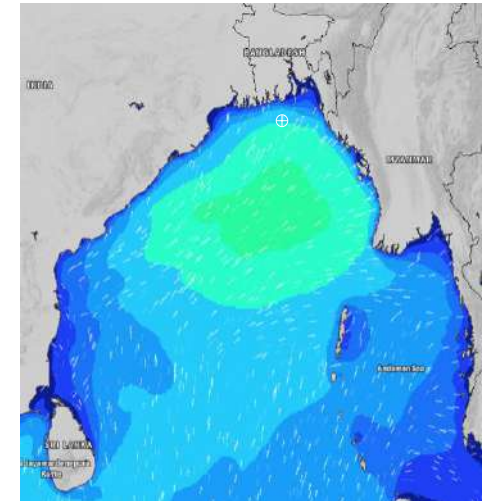
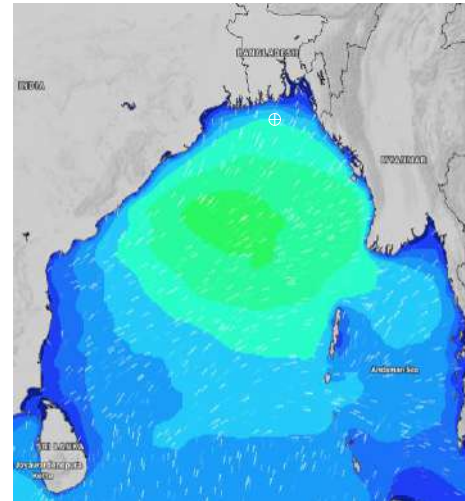
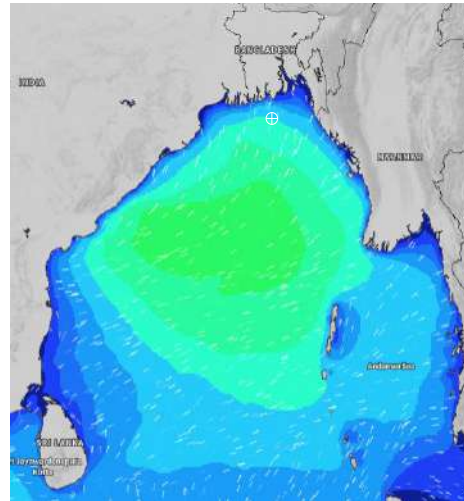
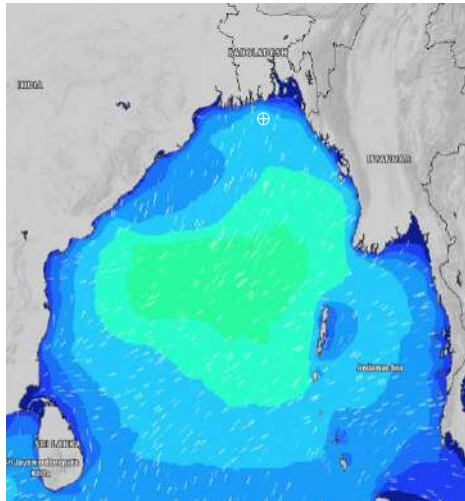
Date	Time	Max Wind Spd (kts)	Wind Direction	Wave Ht (m)	Sea State	Baro Pressure	Air Temp		Sea Surface Temp	Humidity (%)	Prob of Rain (%)	Sea State	Wave Ht (m)
							Max	Min					
18-07-24	0001	19	ESE	2.1	4	1001	32	28	29	89%	19% (0.0 mm)	0	0
	0600	20	ESE	2.4	4	1000			29	84%	12% (0.0 mm)	1	0 - 0.1
	1200	22	ESE	2.6	5	1000			29	78%	10% (0.0 mm)	2	0.1 - 0.5
	1800	18	SE	2.7	5	998			29	82%	12% (0.0 mm)	3	0.5 - 1.25
19-07-24	0001	18	SSE	2.7	5	999	31	28	29	87%	31% (0.2 mm)	4	1.25 - 2.5
	0600	16	SSE	2.7	5	999			29	89%	33% (0.2 mm)	5	2.5 - 4.0
	1200	17	SSE	2.9	5	998			29	81%	36% (0.2 mm)	6	4.0 - 6.0
	1800	16	S	3.1	5	997			29	84%	24% (0.0 mm)	7	6.0 - 9.0
20-07-24	0001	18	S	3.2	5	999	31	28	29	87%	57% (0.4 mm)	8	9.0 - 14.0
	0600	16	S	3.1	5	999			29	90%	63% (0.5 mm)	9	Over 14.0
	1200	15	S	3.0	5	1000			29	81%	50% (0.4 mm)		
	1800	19	S	3.1	5	998			29	85%	37% (0.2 mm)		
21-07-24	0001	19	SSW	3.2	5	1000	30	27	29	89%	68% (0.5 mm)		
	0600	17	SSW	3.2	5	999			29	90%	62% (0.4 mm)		
	1200	18	SSW	3.0	5	1000			29	84%	64% (0.5 mm)		
	1800	18	SSW	3.0	5	999			29	87%	51% (0.4 mm)		

18 July 24 Thu (Probability 98%)

19 July 24 Fri (Probability 95%)

20 July 24 Sat Probability 90%

21 July 24 Sun (Probability 80%)



Significant wave height (m)

MARINE WEATHER FORECAST- 40 NM ESE OF PAYRA FAIRWAY (Lat 21° 07' N, Long 090° 45' E)

DATE : 18 to 25 July 2024

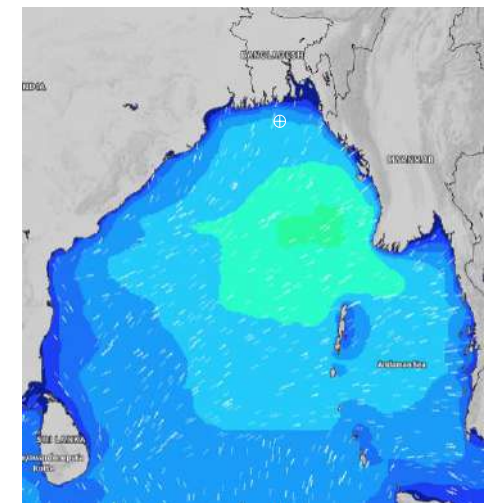
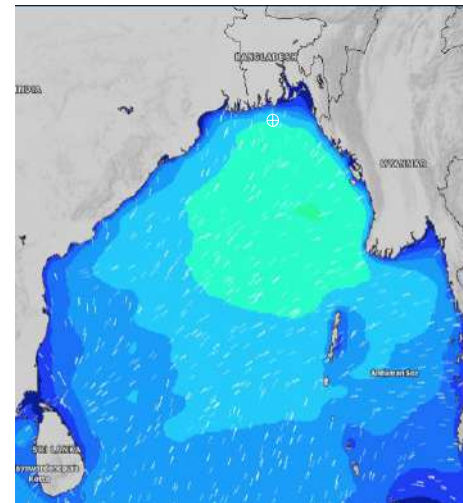
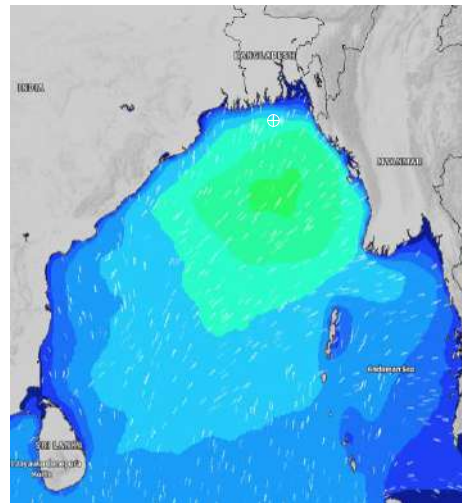
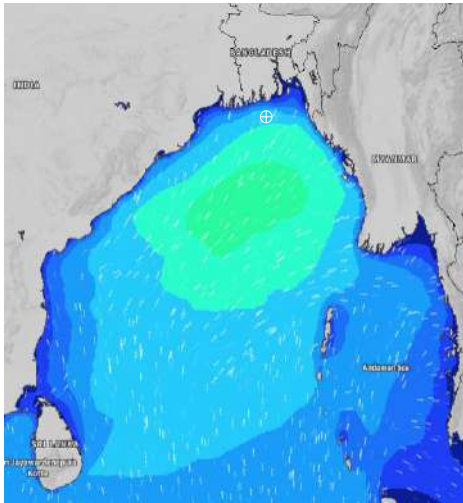
Date	Time	Max Wind Spd (kts)	Wind Direction	Wave Ht (m)	Sea State	Baro Pressure	Air Temp		Sea Surface Temp	Humidity (%)	Prob of Rain (%)	Sea State	Wave Ht (m)
							Max	Min					
22-07-24	0001	19	SSW	3.0	5	1000	30	27	29	90%	76% (0.5 mm)	0	0
	0600	18	SSW	3.0	5	1000			28	92%	62% (0.4 mm)	1	0 - 0.1
	1200	20	SSW	3.0	5	1001			29	86%	64% (0.5 mm)	2	0.1 - 0.5
	1800	22	SSW	3.1	5	999			29	87%	51% (0.4 mm)	3	0.5 - 1.25
23-07-24	0001	23	SSW	3.2	5	1000	29	27	29	90%	78% (0.5 mm)	4	1.25 - 2.5
	0600	21	SW	3.4	5	998			29	92%	62% (0.4 mm)	5	2.5 - 4.0
	1200	21	WSW	3.5	5	999			27	87%	64% (0.5 mm)	6	4.0 - 6.0
	1800	19	SW	3.4	5	998			29	87%	56% (0.4 mm)	7	6.0 - 9.0
24-07-24	0001	22	WSW	3.4	5	999	29	27	29	90%	74% (0.5 mm)	8	9.0 - 14.0
	0600	22	WSW	3.4	5	998			29	92%	62% (0.4 mm)	9	Over 14.0
	1200	20	WSW	3.2	5	998			29	87%	60% (0.5 mm)		
	1800	20	WSW	3.1	5	997			29	89%	69% (0.6 mm)		
25-07-24	0001	17	SW	2.8	5	997	30	27	27	90%	70% (0.6 mm)		
	0600	14	W	2.6	5	996			27	93%	75% (0.7 mm)		
	1200	9	W	2.5	4	996			26	87%	82% (0.8 mm)		
	1800	7	WSW	2.4	4	995			27	90%	69% (0.6 mm)		

22 July 24 Mon (Probability 70%)

23 July 24 Tue (Probability 60%)

24 July 24 Wed Probability 50%

25 July 24 Thu (Probability 50%)



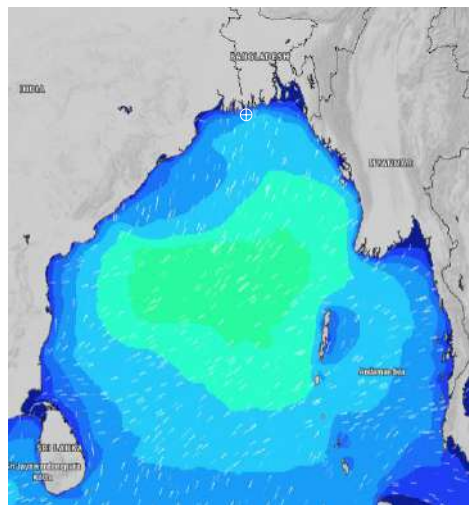
Significant wave height (m)

MARINE WEATHER FORECAST- 10 NM SOUTH OF MONGLA FAIRWAY (Lat 21° 16' N, Long 089° 34' E)

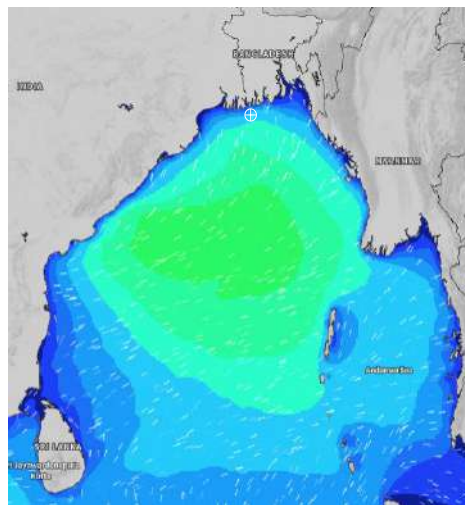
DATE : 18 to 25 July 2024

Date	Time	Max Wind Spd (kts)	Wind Direction	Wave Ht (m)	Sea State	Baro Pressure	Air Temp		Sea Surface Temp	Humidity (%)	Prob of Rain (%)	Sea State	Wave Ht (m)
							Max	Min					
18-07-24	0001	13	ESE	2.0	4	1001	34	28	29	90%	12% (0.0 mm)	0	0
	0600	20	E	2.2	4	1000			29	84%	10% (0.0 mm)	1	0 - 0.1
	1200	22	ESE	2.4	4	999			29	69%	11% (0.0 mm)	2	0.1 - 0.5
	1800	19	ESE	2.6	5	997			29	75%	10% (0.0 mm)	3	0.5 - 1.25
19-07-24	0001	18	SE	2.5	4	998	32	28	29	87%	18% (0.0 mm)	4	1.25 - 2.5
	0600	18	SE	2.6	5	997			29	91%	24% (0.0 mm)	5	2.5 - 4.0
	1200	19	SE	2.8	5	997			29	76%	43% (0.3 mm)	6	4.0 - 6.0
	1800	15	SSE	3.1	5	996			29	79%	15% (0.0 mm)	7	6.0 - 9.0
20-07-24	0001	18	S	3.0	5	998	32	28	29	87%	24% (0.0 mm)	8	9.0 - 14.0
	0600	17	S	3.0	5	998			29	91%	45% (0.3 mm)	9	Over 14.0
	1200	17	SSE	3.0	5	999			29	76%	41% (0.2 mm)		
	1800	17	SSE	3.0	5	997			29	81%	20% (0.0 mm)		
21-07-24	0001	15	SSW	2.9	5	999	32	27	29	88%	34% (0.2 mm)		
	0600	14	S	2.9	5	998			29	91%	37% (0.2 mm)		
	1200	14	SSW	2.8	5	998			29	79%	61% (0.4 mm)		
	1800	13	SSW	2.7	5	997			29	83%	20% (0.0 mm)		

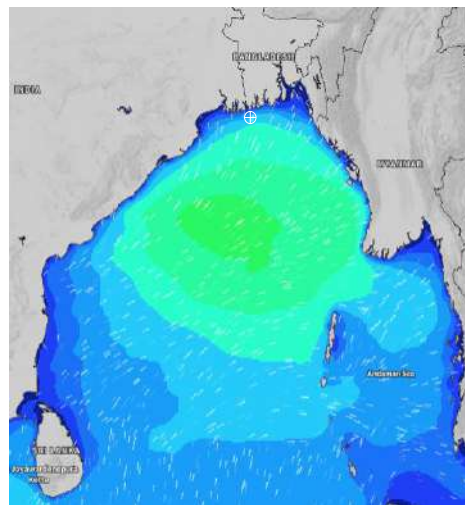
18 July 24 Thu (Probability 98%)



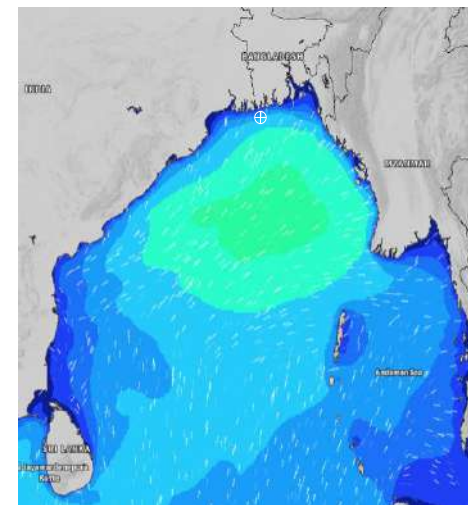
19 July 24 Fri (Probability 95%)



20 July 24 Sat Probability 90%



21 July 24 Sun (Probability 80%)



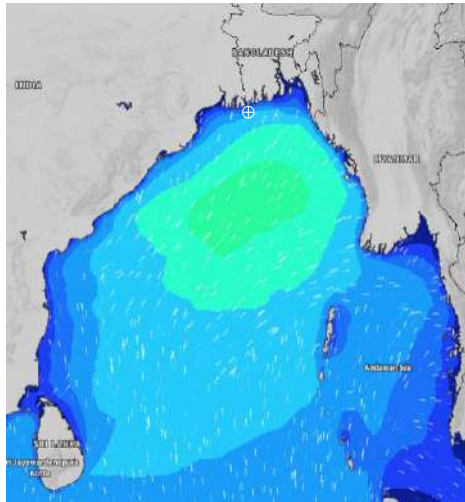
Significant wave height (m)

MARINE WEATHER FORECAST- 10 NM SOUTH OF MONGLA FAIRWAY (Lat 21° 16' N, Long 089° 34' E)

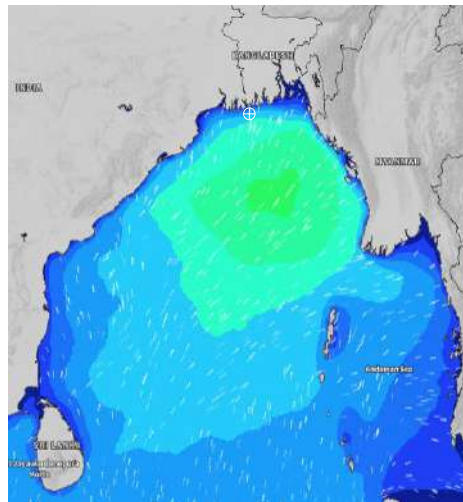
DATE : 18 to 25 July 2024

Date	Time	Max Wind Spd (kts)	Wind Direction	Wave Ht (m)	Sea State	Baro Pressure	Air Temp		Sea Surface Temp	Humidity (%)	Prob of Rain (%)	Sea State	Wave Ht (m)
							Max	Min					
22-07-24	0001	14	SSW	2.6	5	999	31	27	29	90%	54% (0.4 mm)	0	0
	0600	16	SW	2.7	5	998			28	94%	57% (0.6 mm)	1	0 - 0.1
	1200	16	SSW	2.7	5	998			28	82%	66% (0.6 mm)	2	0.1 - 0.5
	1800	15	SSW	2.8	5	997			29	85%	61% (0.4 mm)	3	0.5 - 1.25
23-07-24	0001	15	SW	2.9	5	998	31	27	29	91%	76% (0.5 mm)	4	1.25 - 2.5
	0600	15	WSW	3.0	5	997			29	95%	62% (0.4 mm)	5	2.5 - 4.0
	1200	14	SW	3.1	5	998			29	83%	64% (0.5 mm)	6	4.0 - 6.0
	1800	20	WSW	3.2	5	996			29	87%	51% (0.4 mm)	7	6.0 - 9.0
24-07-24	0001	21	WSW	3.3	5	997	31	27	29	91%	78% (0.5 mm)	8	9.0 - 14.0
	0600	21	WSW	3.2	5	997			28	94%	62% (0.4 mm)	9	Over 14.0
	1200	22	W	3.0	5	996			28	84%	64% (0.5 mm)		
	1800	18	WSW	2.8	5	995			28	86%	56% (0.4 mm)		
25-07-24	0001	17	WSW	2.5	4	997	30	27	29	91%	74% (0.5 mm)		
	0600	15	W	2.5	4	996			28	93%	62% (0.4 mm)		
	1200	10	WNW	2.4	4	996			28	85%	60% (0.5 mm)		
	1800	13	WNW	2.2	4	994			28	86%	62% (0.4 mm)		

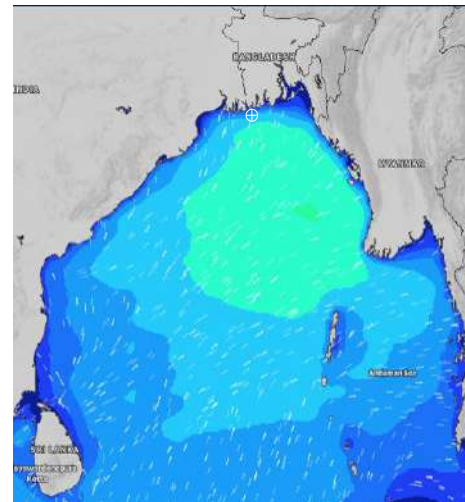
22 July 24 Mon (Probability 70%)



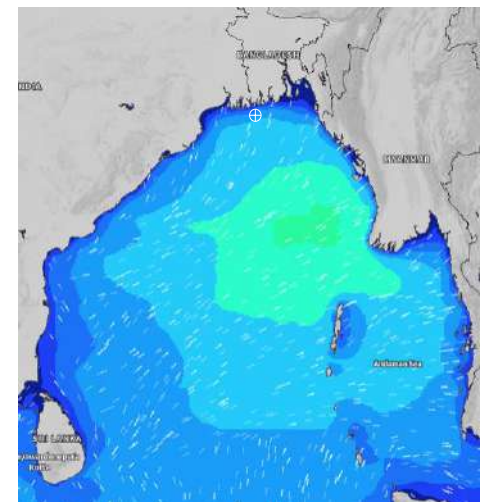
23 July 24 Tue (Probability 60%)



24 July 24 Wed Probability 50%



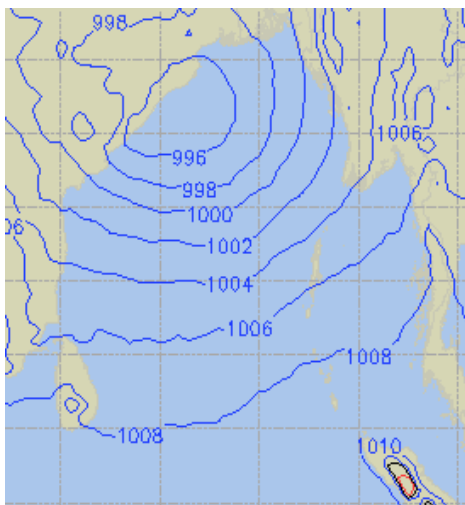
25 July 24 Thu (Probability 50%)



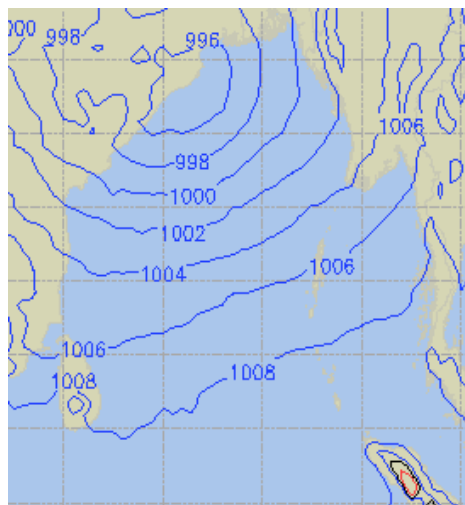
Significant wave height (m)

PREDICTED SURFACE PRESSURE FORECAST (18 to 24 July 2024)

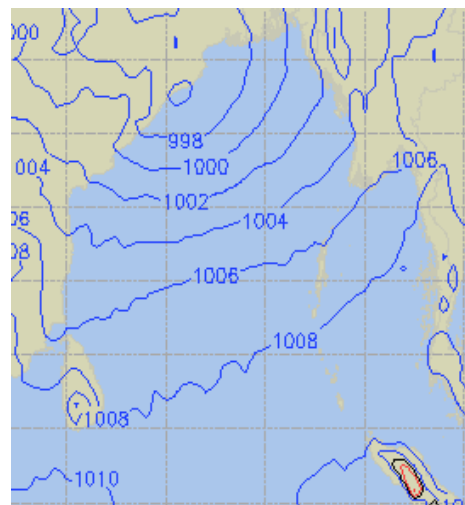
18 July 24 Thu (Probability 98%)



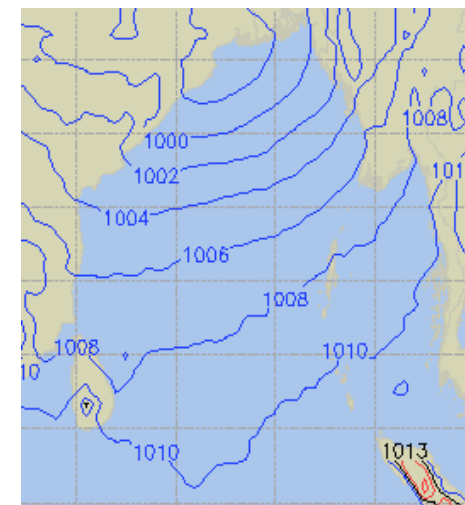
19 July 24 Fri (Probability 95%)



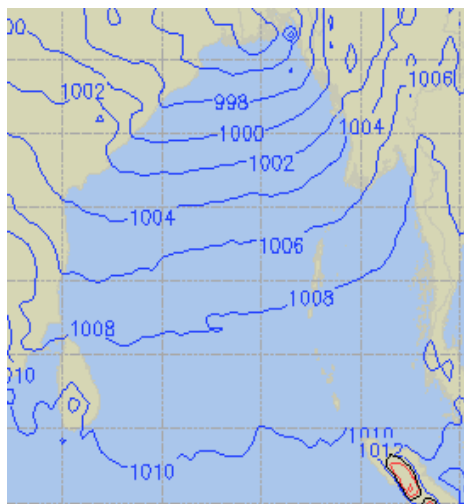
20 July 24 Sat (Probability 90%)



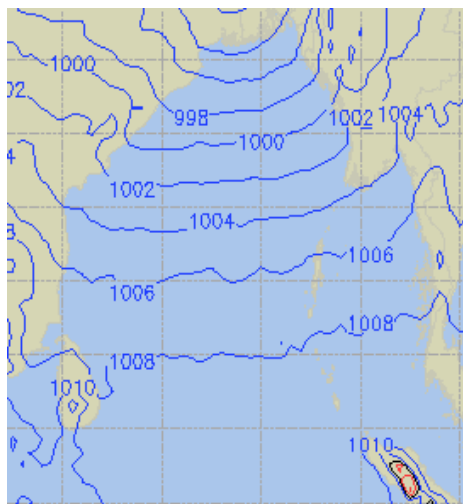
21 July 24 Sun (Probability 80%)



22 July 24 Mon (Probability 70%)



23 July 24 Tue (Probability 60%)



24 July 24 Wed (Probability 50%)

