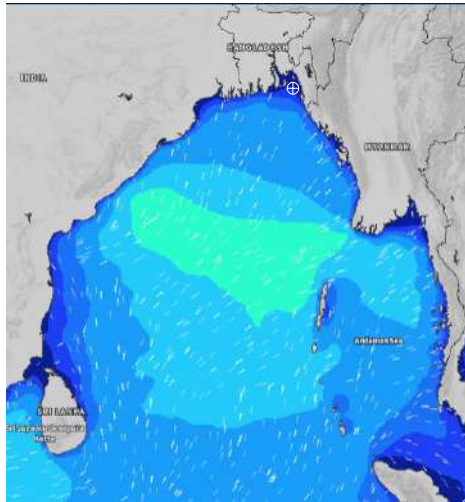


# MARINE WEATHER FORECAST- NEAR AUTHORITY BUOY (Lat 22° 12' N, Long 091° 38' E)

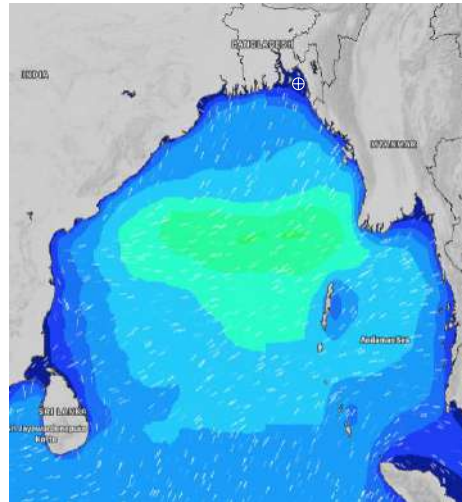
**DATE : 17 to 24 July 2024**

Date	Time	Max Wind Spd (kts)	Wind Direction	Wave Ht (m)	Sea State	Baro Pressure	Air Temp		Sea Surface Temp	Humidity (%)	Prb of Rain (%)	Sea State	Wave Ht (m)
							Max	Min					
17-07-24	0001	13	SSE	0.3	2	1003	32	27	28	90%	14% (0.0 mm)	0	0
	0600	9	SE	0.2	2	1002			27	89%	16% (0.0 mm)	1	0 - 0.1
	1200	8	SW	0.2	2	1002			29	74%	11% (0.0 mm)	2	0.1 - 0.5
	1800	7	SSW	0.2	2	999			29	82%	24% (0.0 mm)	3	0.5 - 1.25
18-07-24	0001	7	SSE	0.1	1	1001	33	27	29	90%	38% (0.2 mm)	4	1.25 - 2.5
	0600	6	SE	0.1	1	1001			27	91%	15% (0.0 mm)	5	2.5 - 4.0
	1200	5	WNW	0.1	1	1000			30	74%	32% (0.2 mm)	6	4.0 - 6.0
	1800	5	SW	0.1	1	998			29	84%	44% (0.3 mm)	7	6.0 - 9.0
19-07-24	0001	9	SE	0.1	1	999	33	27	28	90%	41% (0.2 mm)	8	9.0 - 14.0
	0600	11	SE	0.3	2	999			28	91%	19% (0.0 mm)	9	Over 14.0
	1200	9	SSW	0.2	2	998			31	73%	33% (0.2 mm)		
	1800	14	S	0.4	2	997			30	81%	34% (0.2 mm)		
20-07-24	0001	15	SE	0.4	2	1000	32	27	28	86%	43% (0.2 mm)		
	0600	17	SE	0.4	2	1001			28	89%	24% (0.0 mm)		
	1200	16	S	0.4	2	1001			30	73%	50% (0.4 mm)		
	1800	17	SSE	0.4	2	1000			29	83%	45% (0.3 mm)		

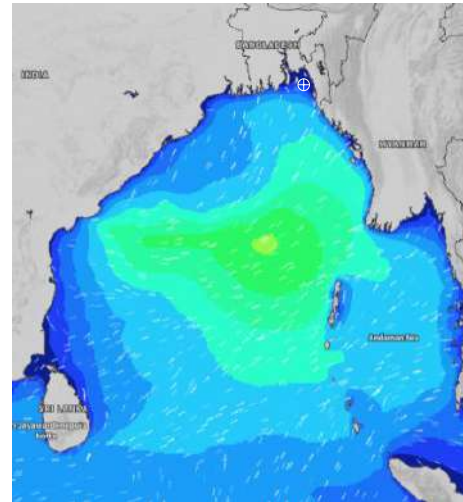
**17 July 24 Wed (Probability 98%)**



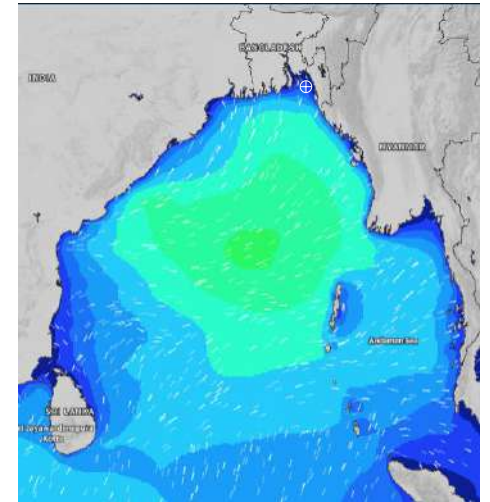
**18 July 24 Thu (Probability 95%)**



**19 July 24 Fri Probability 90%**



**20 July 24 Sat (Probability 80%)**



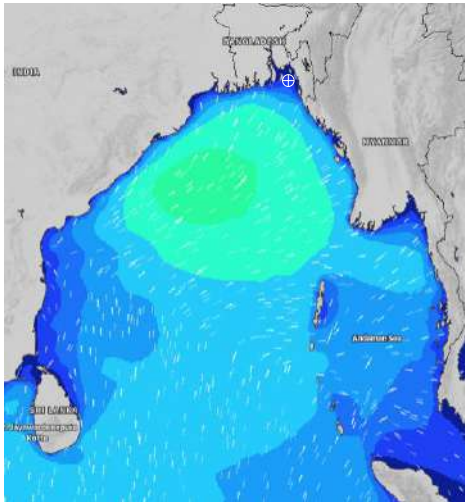
Significant wave height (m)

# MARINE WEATHER FORECAST- NEAR AUTHORITY BUOY (Lat 22° 12' N, Long 091° 38' E)

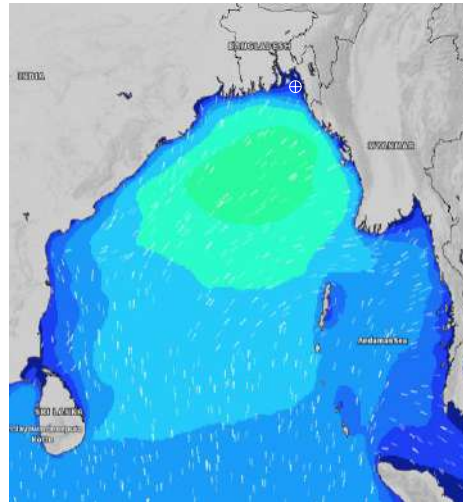
**DATE : 17 to 24 July 2024**

Date	Time	Max Wind Spd (kts)	Wind Direction	Wave Ht (m)	Sea State	Baro Pressure	Air Temp		Sea Surface Temp	Humidity (%)	Prob of Rain (%)	Sea State	Wave Ht (m)
							Max	Min					
21-07-24	0001	18	SSE	0.4	2	1002	31	26	28	87%	42% (0.3 mm)	0	0
	0600	16	SSE	0.4	2	1002			27	89%	34% (0.2 mm)	1	0 - 0.1
	1200	17	S	0.4	2	1002			28	79%	82% (1.0 mm)	2	0.1 - 0.5
	1800	17	SSE	0.4	2	1001			28	85%	52% (0.3 mm)	3	0.5 - 1.25
22-07-24	0001	18	SSE	0.4	2	1002	30	26	27	90%	71% (0.5 mm)	4	1.25 - 2.5
	0600	16	SSE	0.4	2	1000			27	93%	78% (0.7 mm)	5	2.5 - 4.0
	1200	15	SE	0.3	2	999			27	84%	82% (0.9 mm)	6	4.0 - 6.0
	1800	14	SE	0.3	2	997			27	89%	52% (0.4 mm)	7	6.0 - 9.0
23-07-24	0001	11	SE	0.3	2	997	29	26	26	92%	39% (0.2 mm)	8	9.0 - 14.0
	0600	14	SSE	0.3	2	995			26	94%	30% (0.2 mm)	9	Over 14.0
	1200	16	SW	0.4	2	996			27	89%	64% (0.5 mm)		
	1800	22	SSW	0.5	2	996			28	89%	51% (0.4 mm)		
24-07-24	0001	20	SSW	0.5	2	998	29	26	28	92%	39% (0.2 mm)		
	0600	19	SSW	0.5	2	997			28	93%	30% (0.2 mm)		
	1200	18	SSW	0.5	2	998			27	89%	64% (0.5 mm)		
	1800	15	S	0.4	2	998			28	90%	51% (0.4 mm)		

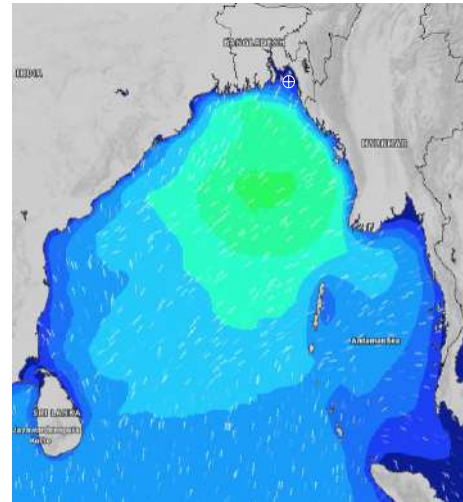
**21 July 24 Sun (Probability 70%)**



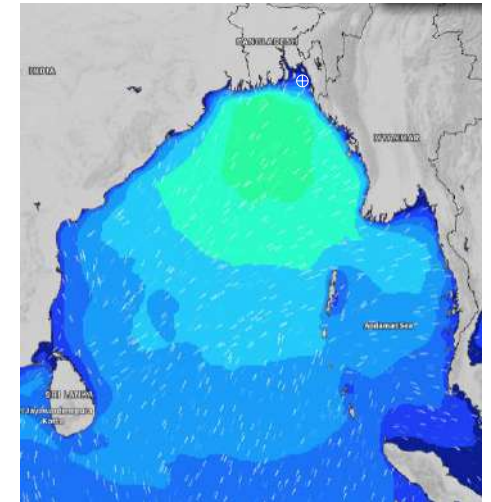
**22 July 24 Mon (Probability 60%)**



**23 July 24 Tue (Probability 50%)**



**24 July 24 Wed (Probability 50%)**



Significant wave height (m)

# MARINE WEATHER FORECAST- 20 NM WEST OF ELEPHANT POINT (Lat 21° 10' N, Long 091° 42' E)

**DATE : 17 to 24 July 2024**

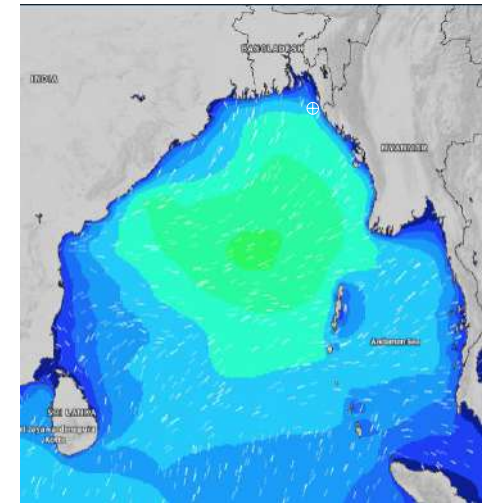
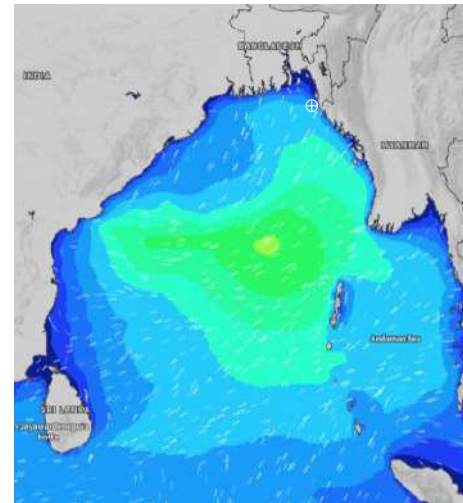
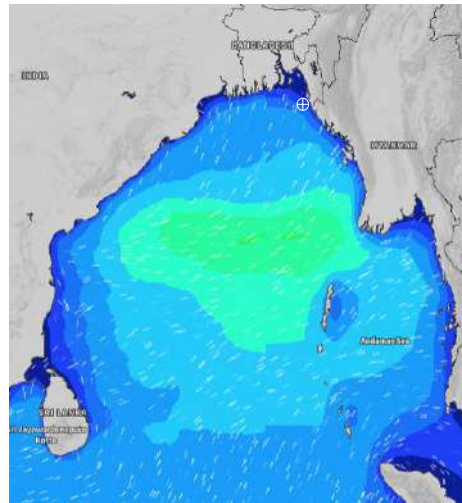
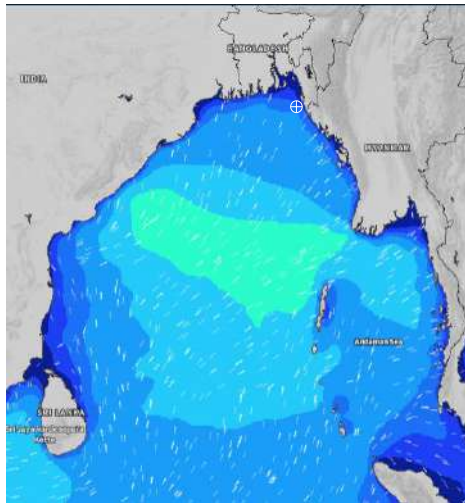
Date	Time	Max Wind Spd (kts)	Wind Direction	Wave Ht (m)	Sea State	Baro Pressure	Air Temp		Sea Surface Temp	Humidity (%)	Prob of Rain (%)	Sea State	Wave Ht (m)
							Max	Min					
17-07-24	0001	19	SE	1.8	4	1003	31	27	28	90%	21% (0.0 mm)	0	0
	0600	17	SE	1.7	4	1002			28	84%	11% (0.0 mm)	1	0 - 0.1
	1200	13	SSE	1.5	4	1002			29	77%	15% (0.0 mm)	2	0.1 - 0.5
	1800	11	S	1.5	4	999			29	85%	13% (0.0 mm)	3	0.5 - 1.25
18-07-24	0001	13	SSE	1.4	4	1001	32	27	29	90%	13% (0.0 mm)	4	1.25 - 2.5
	0600	10	SE	1.4	4	1000			28	90%	16% (0.0 mm)	5	2.5 - 4.0
	1200	5	SSW	1.5	4	1000			29	73%	37% (0.2 mm)	6	4.0 - 6.0
	1800	12	SSE	1.6	4	998			30	85%	43% (0.3 mm)	7	6.0 - 9.0
19-07-24	0001	21	SE	2.1	4	999	31	27	29	88%	34% (0.2 mm)	8	9.0 - 14.0
	0600	21	SE	2.1	4	999			28	89%	24% (0.0 mm)	9	Over 14.0
	1200	24	SE	2.3	4	999			29	77%	48% (0.4 mm)		
	1800	24	SE	2.3	4	998			29	86%	42% (0.3 mm)		
20-07-24	0001	25	SE	2.4	4	1000	31	26	28	89%	55% (0.4 mm)		
	0600	22	SSE	2.5	4	1001			28	91%	57% (0.5 mm)		
	1200	22	SSE	2.5	4	1001			28	80%	58% (0.4 mm)		
	1800	19	SSE	2.4	4	1001			28	86%	52% (0.3 mm)		

**17 July 24 Wed (Probability 98%)**

**18 July 24 Thu (Probability 95%)**

**19 July 24 Fri Probability 90%**

**20 July 24 Sat (Probability 80%)**



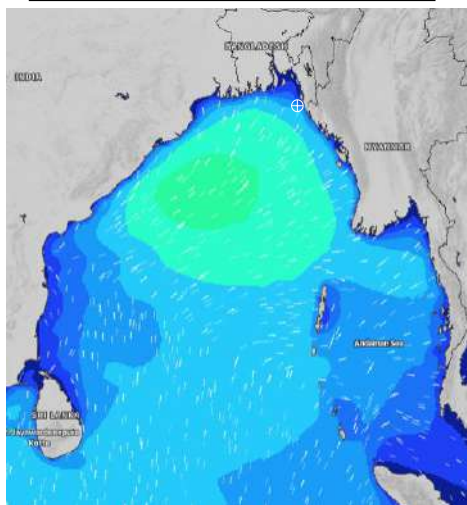
Significant wave height (m)

# MARINE WEATHER FORECAST- 20 NM WEST OF ELEPHANT POINT (Lat 21° 10' N, Long 091° 42' E)

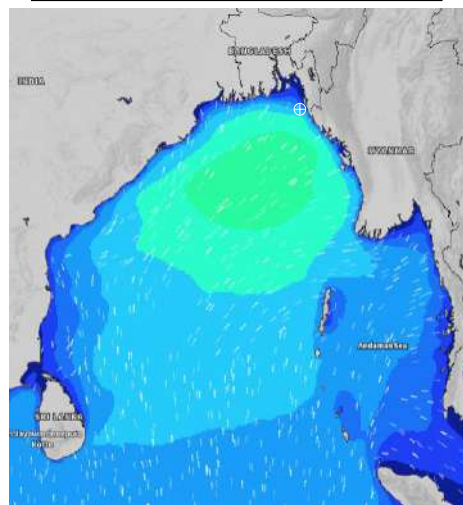
**DATE : 17 to 24 July 2024**

Date	Time	Max Wind Spd (kts)	Wind Direction	Wave Ht (m)	Sea State	Baro Pressure	Air Temp		Sea Surface Temp	Humidity (%)	Prob of Rain (%)	Sea State	Wave Ht (m)
							Max	Min					
21-07-24	0001	18	S	2.3	4	1002	29	26	28	89%	66% (0.6 mm)	0	0
	0600	16	S	2.1	4	1002			28	92%	81% (0.9 mm)	1	0 - 0.1
	1200	17	S	2.1	4	1002			29	85%	90% (1.0 mm)	2	0.1 - 0.5
	1800	17	S	2.1	4	1001			28	90%	78% (0.7 mm)	3	0.5 - 1.25
22-07-24	0001	19	SSW	2.2	4	1002	29	26	28	90%	66% (0.4 mm)	4	1.25 - 2.5
	0600	19	SSW	2.4	4	1000			28	92%	60% (0.6 mm)	5	2.5 - 4.0
	1200	19	SSW	2.4	4	999			28	87%	45% (0.4 mm)	6	4.0 - 6.0
	1800	16	SW	2.5	4	997			28	90%	60% (0.7 mm)	7	6.0 - 9.0
23-07-24	0001	16	SW	2.4	4	997	28	26	27	90%	56% (0.4 mm)	8	9.0 - 14.0
	0600	16	SW	2.4	4	995			27	92%	60% (0.6 mm)	9	Over 14.0
	1200	21	SW	2.8	5	997			28	87%	45% (0.4 mm)		
	1800	19	SW	2.7	5	997			28	90%	60% (0.7 mm)		
24-07-24	0001	22	SW	2.8	5	999	28	26	28	90%	56% (0.4 mm)		
	0600	21	SW	2.8	5	998			28	92%	60% (0.6 mm)		
	1200	23	SW	2.8	5	1000			28	87%	45% (0.4 mm)		
	1800	19	SW	2.6	5	998			28	90%	60% (0.7 mm)		

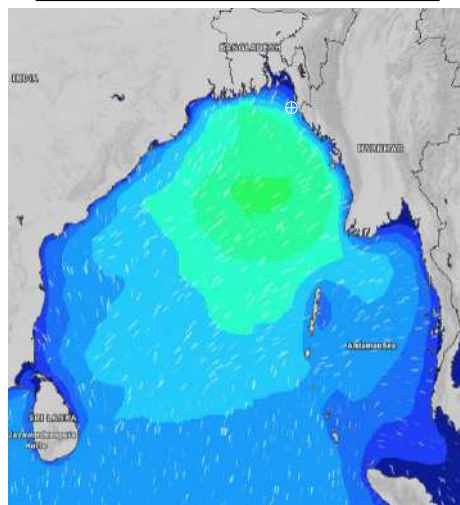
**21 July 24 Sun (Probability 70%)**



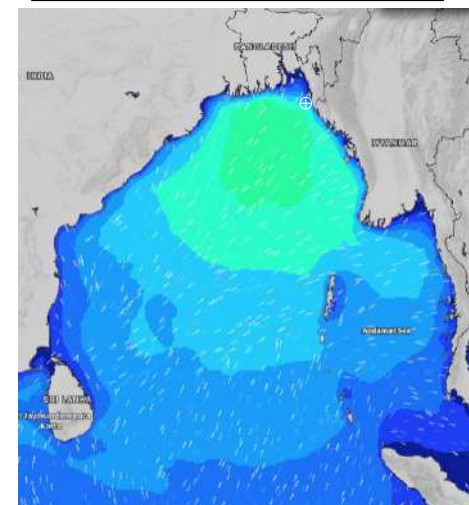
**22 July 24 Mon (Probability 60%)**



**23 July 24 Tue (Probability 50%)**



**24 July 24 Wed (Probability 50%)**



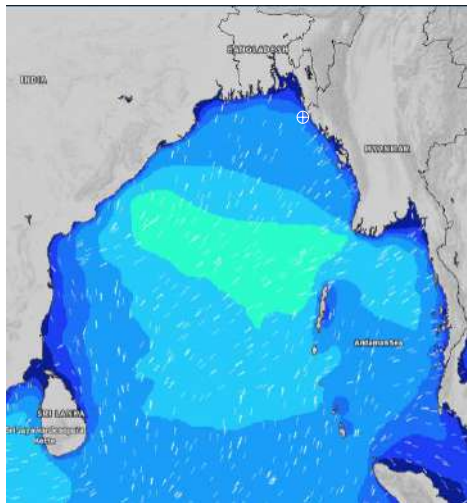
Significant wave height (m)

# MARINE WEATHER FORECAST- 15 NM WEST OF ST. MARTIN'S LIGHT HOUSE (Lat 20° 37'N, Long 092° 03'E)

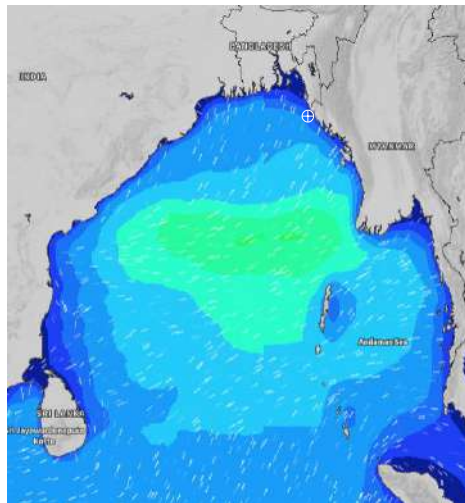
**DATE : 17 to 24 July 2024**

Date	Time	Max Wind Spd (kts)	Wind Direction	Wave Ht (m)	Sea State	Baro Pressure	Air Temp		Sea Surface Temp	Humidity (%)	Prob of Rain(%)	Sea State	Wave Ht (m)
							Max	Min					
17-07-24	0001	15	SE	2.2	4	1003	31	27	29	91%	33% (0.2 mm)	0	0
	0600	13	SSE	2.0	4	1002			28	90%	12% (0.0 mm)	1	0 - 0.1
	1200	12	SE	1.9	4	1003			29	82%	15% (0.0 mm)	2	0.1 - 0.5
	1800	9	SSE	1.8	4	999			29	87%	22% (0.0 mm)	3	0.5 - 1.25
18-07-24	0001	11	SE	1.8	4	1002	32	27	29	90%	21% (0.0 mm)	4	1.25 - 2.5
	0600	11	SE	1.9	4	1000			29	92%	24% (0.0 mm)	5	2.5 - 4.0
	1200	10	ESE	2.0	4	1000			28	76%	21% (0.0 mm)	6	4.0 - 6.0
	1800	23	SE	2.4	4	997			29	84%	23% (0.0 mm)	7	6.0 - 9.0
19-07-24	0001	22	SE	2.6	5	999	30	26	29	89%	53% (0.4 mm)	8	9.0 - 14.0
	0600	21	SE	2.6	5	999			28	91%	42% (0.3 mm)	9	Over 14.0
	1200	22	SE	2.8	5	1000			28	83%	60% (0.6 mm)		
	1800	21	SE	2.8	5	997			28	90%	64% (0.5 mm)		
20-07-24	0001	22	SSE	2.9	5	1000	29	26	28	91%	82% (0.9 mm)		
	0600	20	SSE	3.0	5	1000			28	93%	72% (0.7 mm)		
	1200	20	SSE	3.1	5	1002			28	87%	74% (0.8 mm)		
	1800	18	S	3.0	5	1000			28	90%	72% (0.7 mm)		

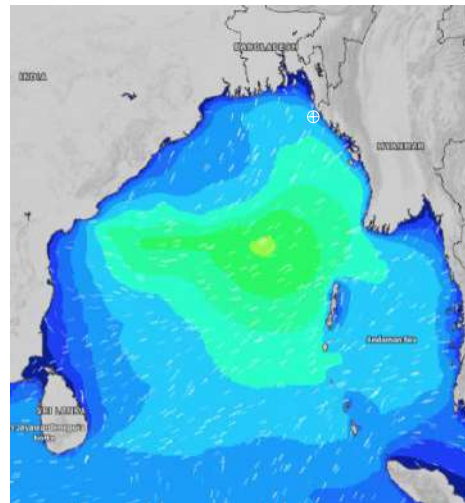
**17 July 24 Wed (Probability 98%)**



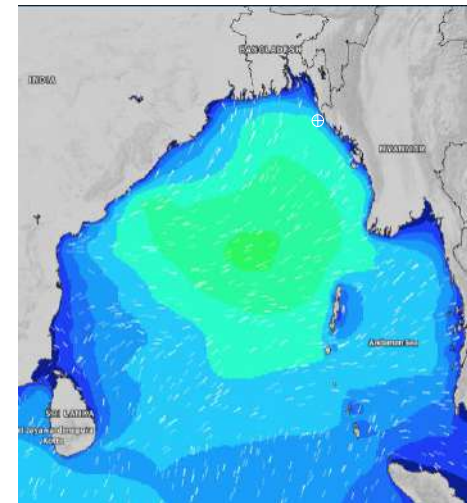
**18 July 24 Thu (Probability 95%)**



**19 July 24 Fri Probability 90%**



**20 July 24 Sat (Probability 80%)**



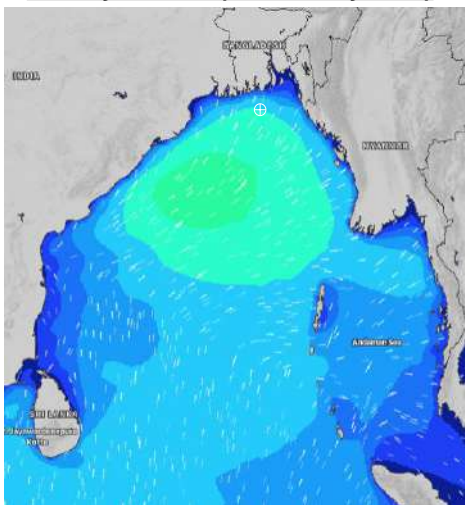
Significant wave height (m)

# MARINE WEATHER FORECAST- 15 NM WEST OF ST. MARTIN'S LIGHT HOUSE (Lat 20° 37'N, Long 092° 03'E)

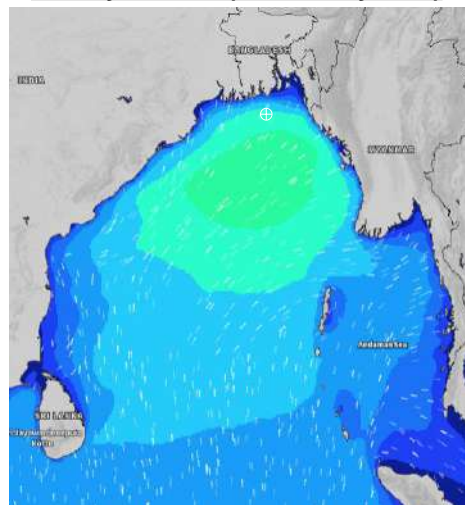
**DATE : 17 to 24 July 2024**

Date	Time	Max Wind Spd (kts)	Wind Direction	Wave Ht (m)	Sea State	Baro Pressure	Air Temp		Sea Surface Temp	Humidity (%)	Prob of Rain (%)	Sea State	Wave Ht (m)
							Max	Min					
21-07-24	0001	18	S	2.9	5	1003	29	26	28	91%	88% (1.2 mm)	0	0
	0600	16	SSW	2.8	5	1001			28	93%	93% (1.0 mm)	1	0 - 0.1
	1200	16	SSW	2.8	5	1003			28	90%	92% (1.1 mm)	2	0.1 - 0.5
	1800	17	SSW	2.8	5	1001			28	91%	87% (1.2 mm)	3	0.5 - 1.25
22-07-24	0001	19	SSW	2.8	5	1003	28	26	28	92%	64% (0.6 mm)	4	1.25 - 2.5
	0600	21	SSW	3.1	5	1001			28	93%	75% (0.7 mm)	5	2.5 - 4.0
	1200	22	SSW	3.2	5	1002			28	91%	64% (0.6 mm)	6	4.0 - 6.0
	1800	25	SW	3.4	5	998			28	90%	75% (0.7 mm)	7	6.0 - 9.0
23-07-24	0001	23	SW	3.5	5	998	28	26	27	92%	43% (0.1 mm)	8	9.0 - 14.0
	0600	21	WSW	3.4	5	996			27	93%	75% (0.7 mm)	9	Over 14.0
	1200	22	WSW	3.6	5	998			28	91%	43% (0.1 mm)		
	1800	21	WSW	3.6	5	997			28	90%	34% (0.2 mm)		
24-07-24	0001	22	SW	3.6	5	1000	28	26	28	92%	81% (1.6 mm)		
	0600	24	SW	3.6	5	999			28	93%	75% (0.7 mm)		
	1200	22	SW	3.5	5	1000			28	90%	64% (0.6 mm)		
	1800	22	SW	3.5	5	999			28	90%	75% (0.7 mm)		

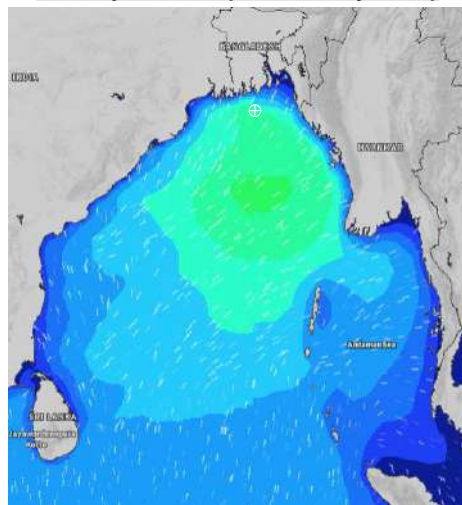
**21 July 24 Sun (Probability 70%)**



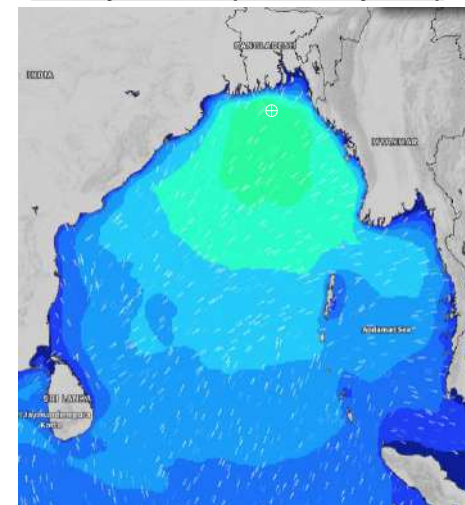
**22 July 24 Mon (Probability 60%)**



**23 July 24 Tue (Probability 50%)**



**24 July 24 Wed (Probability 50%)**



Significant wave height (m)

# MARINE WEATHER FORECAST- 40 NM ESE OF PAYRA FAIRWAY (Lat 21° 07' N, Long 090° 45' E)

**DATE : 17 to 24 July 2024**

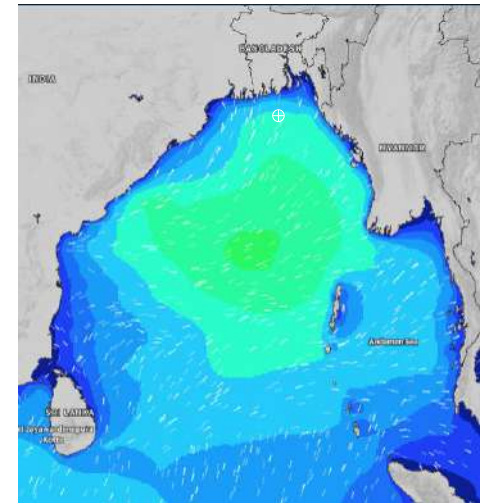
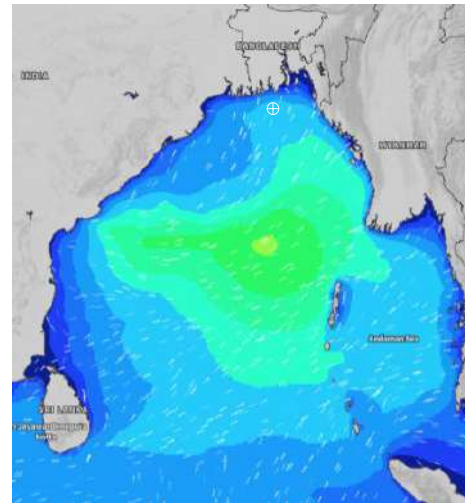
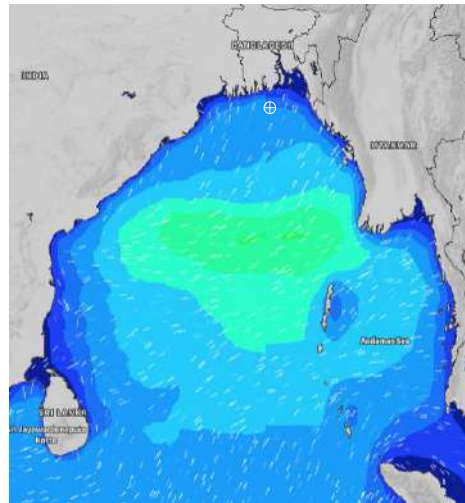
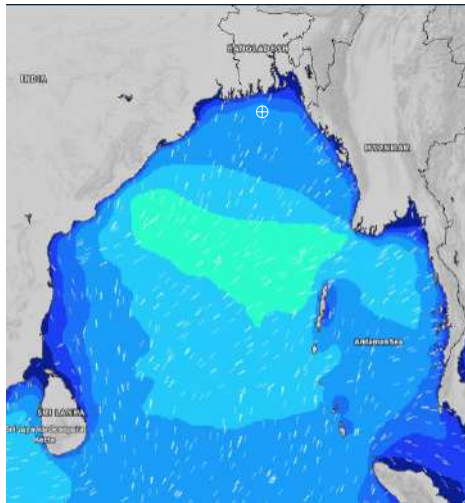
Date	Time	Max Wind Spd (kts)	Wind Direction	Wave Ht (m)	Sea State	Baro Pressure	Air Temp		Sea Surface Temp	Humidity (%)	Prob of Rain (%)	Sea State	Wave Ht (m)
							Max	Min					
17-07-24	0001	14	SSE	2.2	4	1002	31	28	29	87%	18% (0.0 mm)	0	0
	0600	13	SSE	2.1	4	1001			29	85%	12% (0.0 mm)	1	0 - 0.1
	1200	9	SE	2.0	4	1002			29	80%	14% (0.0 mm)	2	0.1 - 0.5
	1800	8	SSE	1.9	4	999			29	83%	16% (0.0 mm)	3	0.5 - 1.25
18-07-24	0001	11	SSE	1.9	4	1001	32	28	29	89%	19% (0.0 mm)	4	1.25 - 2.5
	0600	9	SE	1.9	4	1000			29	90%	21% (0.0 mm)	5	2.5 - 4.0
	1200	11	ESE	2.1	4	1000			29	77%	18% (0.0 mm)	6	4.0 - 6.0
	1800	15	E	2.1	4	998			30	81%	11% (0.0 mm)	7	6.0 - 9.0
19-07-24	0001	21	ESE	2.6	5	998	31	28	29	87%	31% (0.2 mm)	8	9.0 - 14.0
	0600	19	ESE	2.7	5	998			29	88%	33% (0.2 mm)	9	Over 14.0
	1200	22	ESE	2.7	5	998			29	79%	32% (0.2 mm)		
	1800	22	SE	2.8	5	996			29	84%	24% (0.0 mm)		
20-07-24	0001	22	SE	2.9	5	998	31	28	29	87%	57% (0.4 mm)		
	0600	20	SSE	3.0	5	999			29	90%	63% (0.5 mm)		
	1200	21	SSE	3.1	5	1000			29	82%	50% (0.4 mm)		
	1800	19	S	3.1	5	999			29	85%	37% (0.2 mm)		

**17 July 24 Wed (Probability 98%)**

**18 July 24 Thu (Probability 95%)**

**19 July 24 Fri Probability 90%**

**20 July 24 Sat (Probability 80%)**



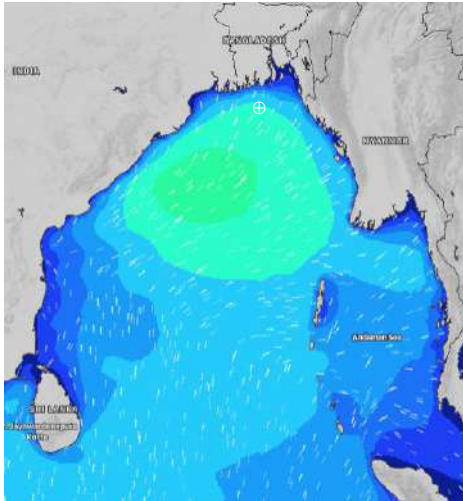
Significant wave height (m)

# MARINE WEATHER FORECAST- 40 NM ESE OF PAYRA FAIRWAY (Lat 21° 07' N, Long 090° 45' E)

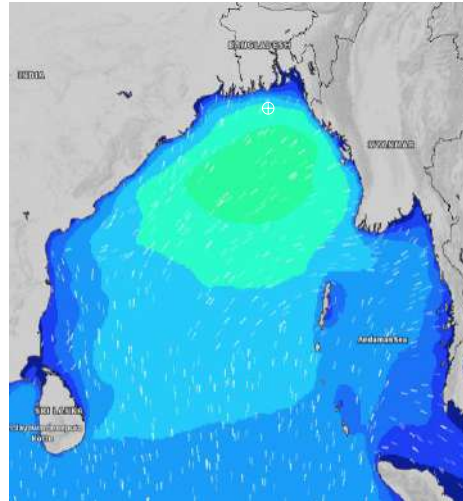
**DATE : 17 to 24 July 2024**

Date	Time	Max Wind Spd (kts)	Wind Direction	Wave Ht (m)	Sea State	Baro Pressure	Air Temp		Sea Surface Temp	Humidity (%)	Prob of Rain (%)	Sea State	Wave Ht (m)
							Max	Min					
21-07-24	0001	19	S	3.0	5	1001	30	27	29	89%	61% (0.6 mm)	0	0
	0600	18	S	2.9	5	1001			29	91%	75% (0.7 mm)	1	0 - 0.1
	1200	17	SSW	3.0	5	1001			29	84%	69% (0.8 mm)	2	0.1 - 0.5
	1800	20	SSW	3.0	5	1000			29	87%	41% (0.4 mm)	3	0.5 - 1.25
22-07-24	0001	22	SSW	3.1	5	1001	30	27	28	89%	61% (0.6 mm)	4	1.25 - 2.5
	0600	22	SW	3.3	5	999			28	91%	52% (0.4 mm)	5	2.5 - 4.0
	1200	21	SW	3.3	5	998			29	87%	57% (0.4 mm)	6	4.0 - 6.0
	1800	20	WSW	3.3	5	996			29	87%	24% (0.1 mm)	7	6.0 - 9.0
23-07-24	0001	19	SW	3.2	5	996	29	27	27	89%	61% (0.6 mm)	8	9.0 - 14.0
	0600	24	WSW	3.4	5	995			28	91%	75% (0.7 mm)	9	Over 14.0
	1200	26	WSW	3.5	5	996			28	87%	69% (0.8 mm)		
	1800	25	WSW	3.7	5	996			28	88%	61% (0.6 mm)		
24-07-24	0001	27	SW	3.8	5	998	29	27	28	89%	70% (0.6 mm)		
	0600	28	SW	3.9	5	997			28	91%	75% (0.7 mm)		
	1200	25	SW	3.9	5	999			28	87%	82% (0.8 mm)		
	1800	22	SW	3.8	5	997			28	89%	69% (0.6 mm)		

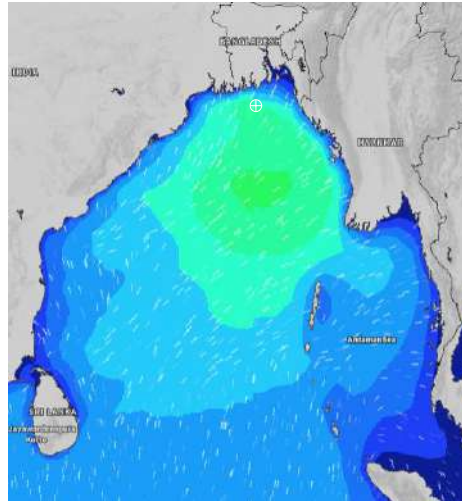
**21 July 24 Sun (Probability 70%)**



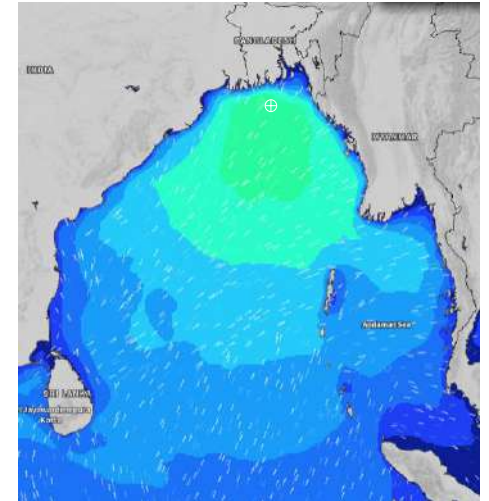
**22 July 24 Mon (Probability 60%)**



**23 July 24 Tue (Probability 50%)**



**24 July 24 Wed (Probability 50%)**



Significant wave height (m)

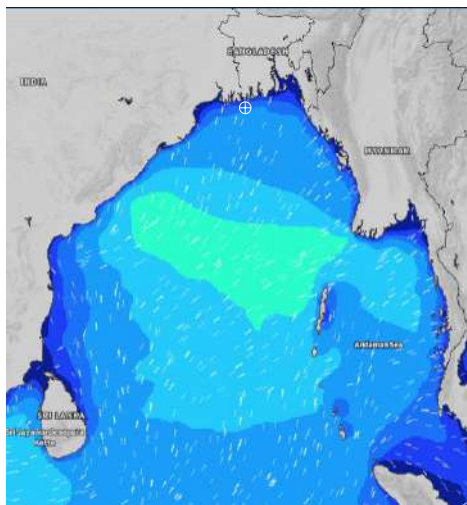


# MARINE WEATHER FORECAST- 10 NM SOUTH OF MONGLA FAIRWAY (Lat 21° 16' N, Long 089° 34' E)

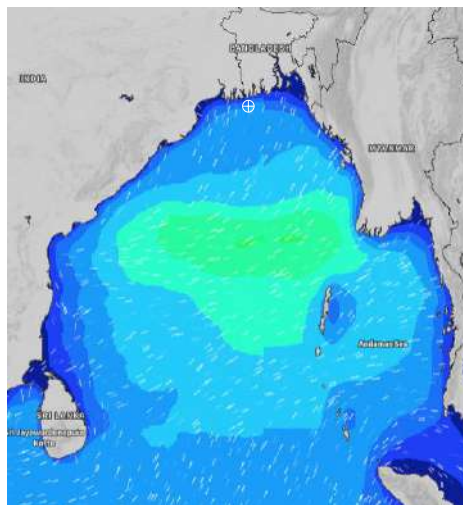
**DATE : 17 to 24 July 2024**

Date	Time	Max Wind Spd (kts)	Wind Direction	Wave Ht (m)	Sea State	Baro Pressure	Air Temp		Sea Surface Temp	Humidity (%)	Prob of Rain (%)	Sea State	Wave Ht (m)
							Max	Min					
17-07-24	0001	9	SSE	2.1	4	1001	33	27	29	90%	16% (0.0 mm)	0	0
	0600	10	S	2.0	4	1001			29	87%	12% (0.0 mm)	1	0 - 0.1
	1200	10	SSE	1.9	4	1001			29	75%	50% (0.3 mm)	2	0.1 - 0.5
	1800	10	SSE	1.9	4	999			29	79%	10% (0.0 mm)	3	0.5 - 1.25
18-07-24	0001	10	SSE	1.9	4	1001	34	28	29	90%	18% (0.0 mm)	4	1.25 - 2.5
	0600	8	ESE	1.9	4	999			29	94%	24% (0.0 mm)	5	2.5 - 4.0
	1200	10	ESE	2.1	4	1000			29	71%	24% (0.0 mm)	6	4.0 - 6.0
	1800	8	ESE	2.0	4	998			29	74%	10% (0.0 mm)	7	6.0 - 9.0
19-07-24	0001	18	E	2.0	4	998	33	27	29	87%	18% (0.0 mm)	8	9.0 - 14.0
	0600	20	ESE	2.4	4	997			29	91%	24% (0.0 mm)	9	Over 14.0
	1200	21	ESE	2.5	4	997			29	73%	43% (0.3 mm)		
	1800	18	ESE	2.5	4	996			29	79%	15% (0.0 mm)		
20-07-24	0001	16	SE	2.4	4	997	32	27	29	87%	34% (0.2 mm)		
	0600	17	SSE	2.5	4	997			29	90%	37% (0.2 mm)		
	1200	20	SSE	2.6	5	999			29	77%	61% (0.4 mm)		
	1800	18	S	2.7	5	998			29	81%	20% (0.0 mm)		

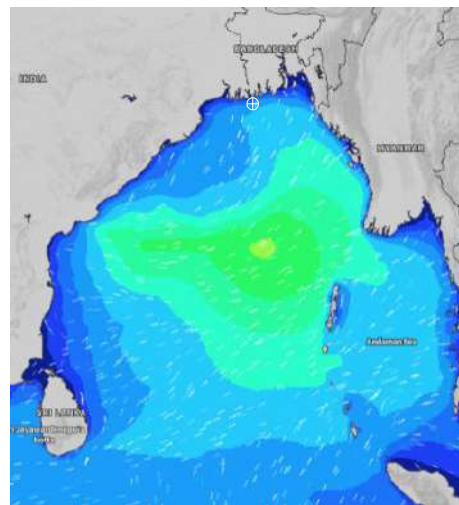
**17 July 24 Wed (Probability 98%)**



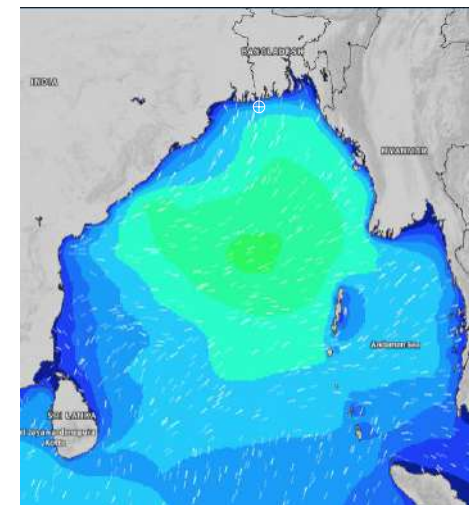
**18 July 24 Thu (Probability 95%)**



**19 July 24 Fri Probability 90%**



**20 July 24 Sat (Probability 80%)**



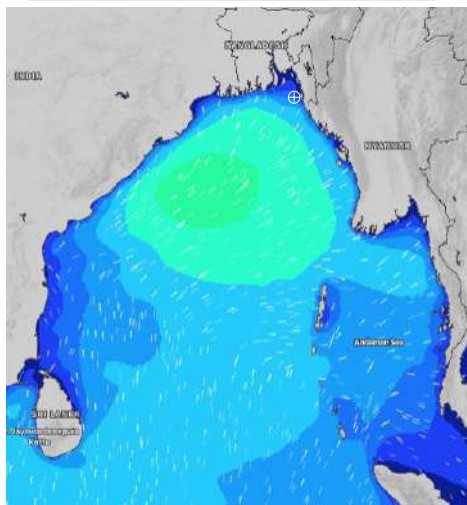
Significant wave height (m)

# MARINE WEATHER FORECAST- 10 NM SOUTH OF MONGLA FAIRWAY (Lat 21° 16' N, Long 089° 34' E)

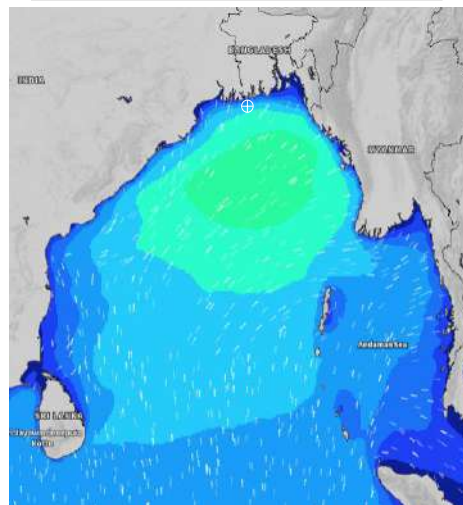
**DATE : 17 to 24 July 2024**

Date	Time	Max Wind Spd (kts)	Wind Direction	Wave Ht (m)	Sea State	Baro Pressure	Air Temp		Sea Surface Temp	Humidity (%)	Prob of Rain (%)	Sea State	Wave Ht (m)
							Max	Min					
21-07-24	0001	20	S	2.8	5	999	31	27	29	89%	70% (0.7 mm)	0	0
	0600	19	S	2.9	5	999			29	91%	72% (0.6 mm)	1	0 - 0.1
	1200	18	S	3.0	5	1000			29	79%	63% (0.6 mm)	2	0.1 - 0.5
	1800	17	SSW	2.9	5	998			29	83%	45% (0.4 mm)	3	0.5 - 1.25
22-07-24	0001	19	SSW	2.9	5	999	31	27	29	89%	43% (0.2 mm)	4	1.25 - 2.5
	0600	19	SW	3.0	5	998			29	92%	57% (0.4 mm)	5	2.5 - 4.0
	1200	15	WSW	3.1	5	997			29	80%	63% (0.5 mm)	6	4.0 - 6.0
	1800	19	SW	3.0	5	996			29	84%	24% (0.0 mm)	7	6.0 - 9.0
23-07-24	0001	22	WSW	3.1	5	996	30	27	28	90%	43% (0.2 mm)	8	9.0 - 14.0
	0600	26	WSW	3.2	5	994			28	92%	57% (0.4 mm)	9	Over 14.0
	1200	30	WSW	3.3	5	995			28	80%	63% (0.5 mm)		
	1800	32	WSW	3.5	5	995			27	84%	24% (0.0 mm)		
24-07-24	0001	30	WSW	3.7	5	997	30	27	27	90%	43% (0.2 mm)		
	0600	30	WSW	3.9	5	996			27	92%	57% (0.4 mm)		
	1200	29	WSW	3.9	5	997			28	80%	63% (0.5 mm)		
	1800	24	WSW	3.8	5	996			28	84%	24% (0.0 mm)		

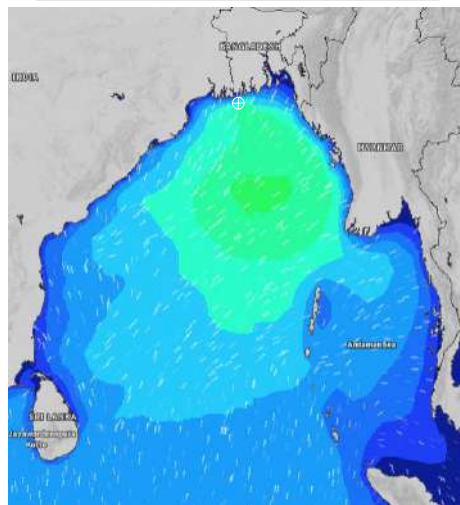
**21 July 24 Sun (Probability 70%)**



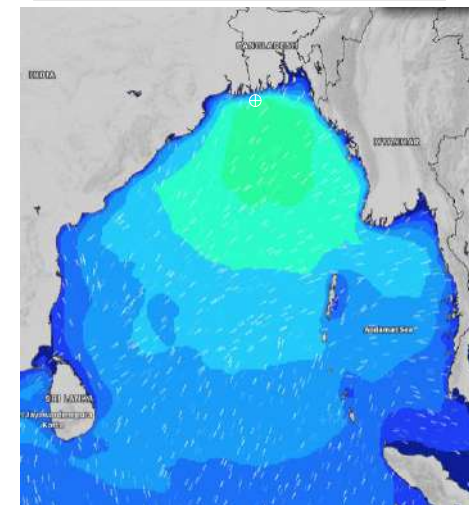
**22 July 24 Mon (Probability 60%)**



**23 July 24 Tue (Probability 50%)**



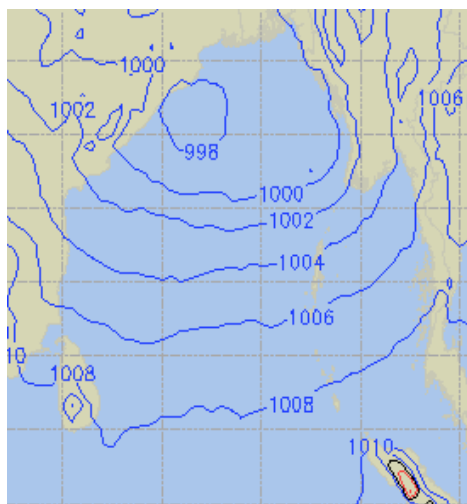
**24 July 24 Wed (Probability 50%)**



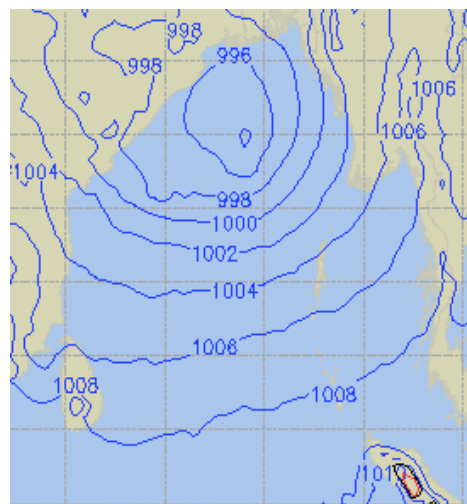
Significant wave height (m)

## PREDICTED SURFACE PRESSURE FORECAST (17 to 23 July 2024)

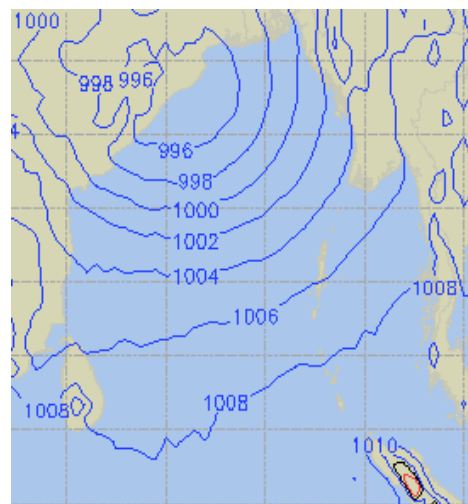
**17 July 24 Wed (Probability 98%)**



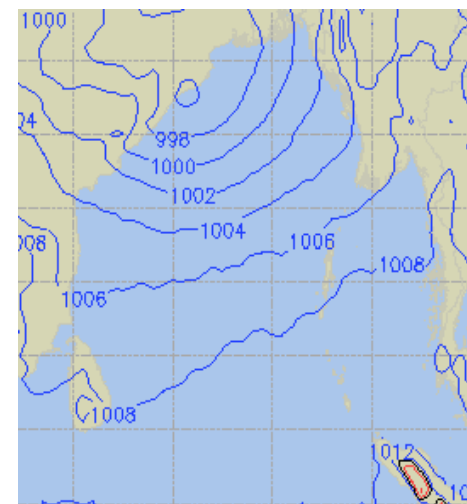
**18 July 24 Thu (Probability 95%)**



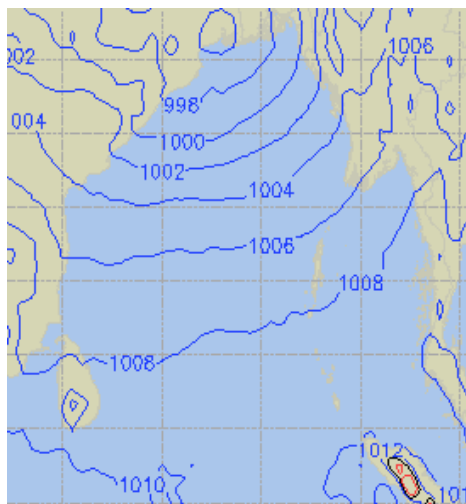
**19 July 24 Fri (Probability 90%)**



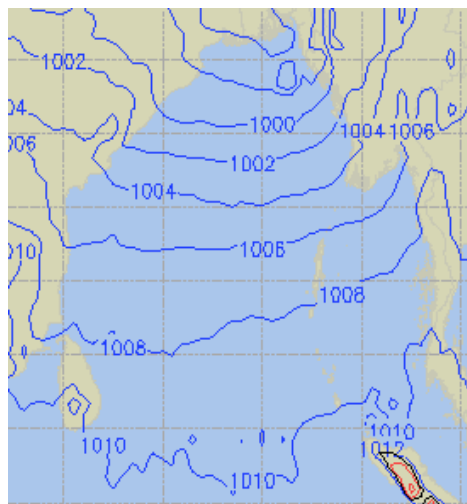
**20 July 24 Sat (Probability 80%)**



**21 July 24 Sun (Probability 70%)**



**22 July 24 Mon (Probability 60%)**



**23 July 24 Tue (Probability 50%)**

