

**MARINE WEATHER FORECAST- NEAR AUTHORITY BUOY (Lat 22° 12' N, Long 091° 38' E)**

**DATE : 17 to 24 May 2024**

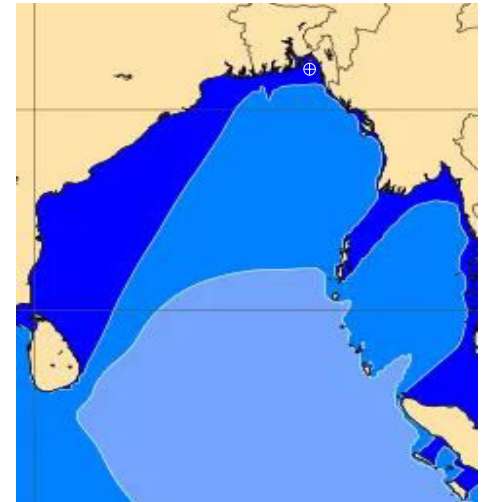
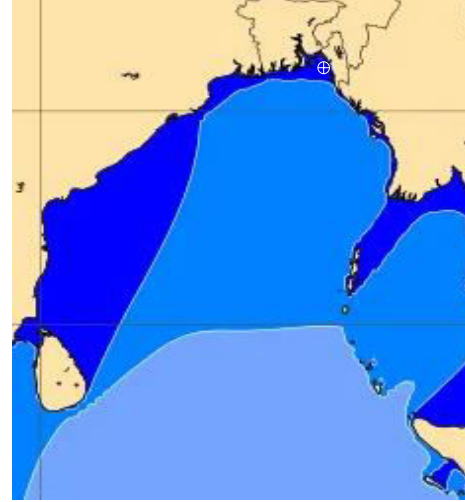
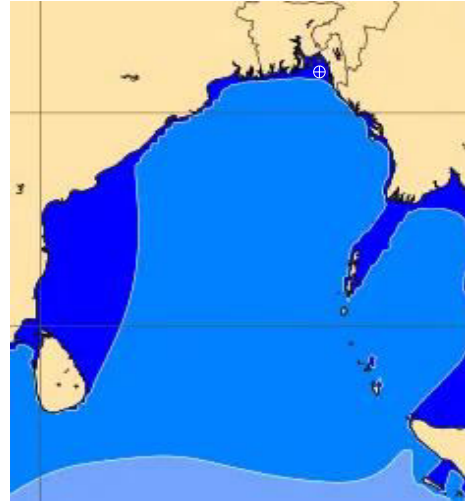
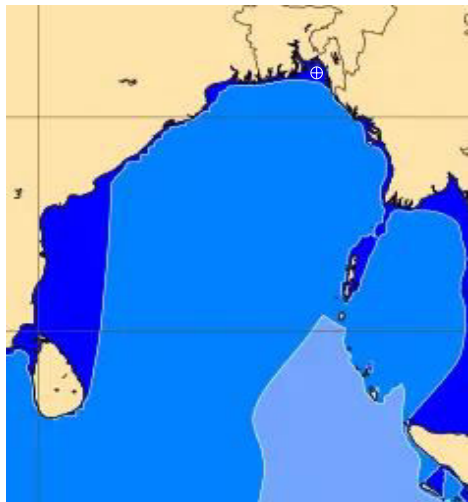
Date	Time	Max Wind Spd (kts)	Wind Direction	Wave Ht (m)	Sea State	Baro Pressure	Air Temp		Sea Surface Temp	Humidity (%)	Prob of Rain (%)	Sea State	Wave Ht (m)
							Max	Min					
17-05-24	0001	7	WSW	0.2	2	1007	35	26	30	82%	12% (0.0 mm)	0	0
	0600	6	SE	0.1	1	1008			29	93%	11% (0.0 mm)	1	0 - 0.1
	1200	6	WSW	0.1	1	1008			30	71%	13% (0.0 mm)	2	0.1 - 0.5
	1800	11	SW	0.3	2	1005			30	85%	15% (0.0 mm)	3	0.5 - 1.25
18-05-24	0001	10	SSW	0.2	2	1006	35	26	30	84%	13% (0.0 mm)	4	1.25 - 2.5
	0600	7	SSE	0.1	1	1006			29	92%	16% (0.0 mm)	5	2.5 - 4.0
	1200	8	SW	0.1	1	1007			30	75%	12% (0.0 mm)	6	4.0 - 6.0
	1800	17	W	0.3	2	1004			30	83%	14% (0.0 mm)	7	6.0 - 9.0
19-05-24	0001	12	SSW	0.2	2	1005	35	26	29	85%	11% (0.0 mm)	8	9.0 - 14.0
	0600	10	S	0.2	2	1005			29	94%	12% (0.0 mm)	9	Over 14.0
	1200	7	SW	0.2	2	1006			30	75%	15% (0.0 mm)		
	1800	8	SSW	0.2	2	1002			30	86%	13% (0.0 mm)		
20-05-24	0001	12	SW	0.3	2	1004	35	26	29	85%	12% (0.0 mm)		
	0600	10	S	0.2	2	1004			29	94%	14% (0.0 mm)		
	1200	9	SSW	0.2	2	1005			30	72%	11% (0.0 mm)		
	1800	11	SW	0.2	2	1002			30	85%	12% (0.0 mm)		

**17 May 24 Fri (Probability 98%)**

**18 May 24 Sat (Probability 95%)**

**19 May 24 Sun (Probability 90%)**

**20 May 24 Mon (Probability 80%)**



Significant wave height (m)

**MARINE WEATHER FORECAST- NEAR AUTHORITY BUOY (Lat 22° 12'N, Long 091° 38'E)**

**DATE : 17 to 24 May 2024**

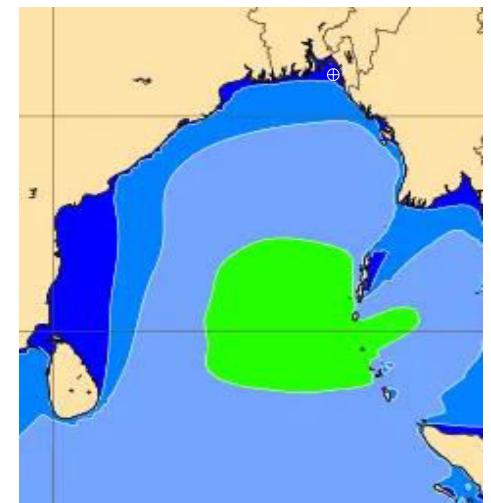
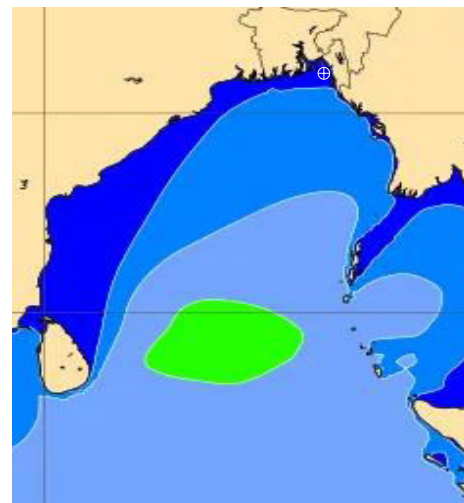
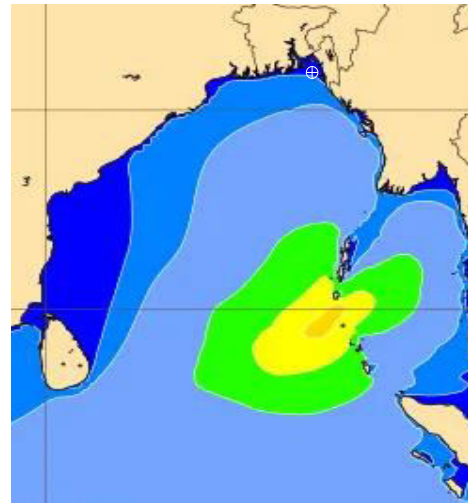
Date	Time	Max Wind Spd (kts)	Wind Direction	Wave Ht (m)	Sea State	Baro Pressure	Air Temp		Sea Surface Temp	Humidity (%)	Prob of Rain (%)	Sea State	Wave Ht (m)
							Max	Min					
21-05-24	0001	8	SW	0.2	2	1004	35	26	29	82%	12% (0.0 mm)	0	0
	0600	7	SE	0.1	1	1005			29	94%	11% (0.0 mm)	1	0 - 0.1
	1200	8	WSW	0.1	1	1006			30	73%	13% (0.0 mm)	2	0.1 - 0.5
	1800	11	W	0.2	2	1002			30	85%	15% (0.0 mm)	3	0.5 - 1.25
22-05-24	0001	9	SSW	0.1	1	1005	35	26	30	81%	11% (0.0 mm)	4	1.25 - 2.5
	0600	6	SE	0.1	1	1006			29	96%	16% (0.0 mm)	5	2.5 - 4.0
	1200	7	W	0.1	1	1006			30	73%	12% (0.0 mm)	6	4.0 - 6.0
	1800	10	W	0.2	2	1002			30	85%	14% (0.0 mm)	7	6.0 - 9.0
23-05-24	0001	6	SSW	0.1	1	1003	35	26	29	81%	13% (0.0 mm)	8	9.0 - 14.0
	0600	7	ENE	0.1	1	1003			29	92%	11% (0.0 mm)	9	Over 14.0
	1200	9	WNW	0.2	2	1002			30	73%	12% (0.0 mm)		
	1800	11	W	0.2	2	1001			30	85%	15% (0.0 mm)		
24-05-24	0001	8	S	0.1	1	1001	35	26	29	84%	14% (0.0 mm)		
	0600	6	ENE	0.1	1	1001			29	96%	11% (0.0 mm)		
	1200	7	NE	0.1	1	1000			30	72%	13% (0.0 mm)		
	1800	12	SW	0.2	2	1000			30	85%	15% (0.0 mm)		

**21 May 24 Tue (Probability 70%)**

**22 May 24 Wed (Probability 60%)**

**23 May 24 Thu (Probability 50%)**

**24 May 24 Fri (Probability 50%)**



0 0.5 1 2 3 4 6 8 10 12 14 20

Significant wave height (m)

# MARINE WEATHER FORECAST- 20 NM WEST OF ELEPHANT POINT (Lat 21° 10' N, Long 091° 42' E)

**DATE : 17 to 24 May 2024**

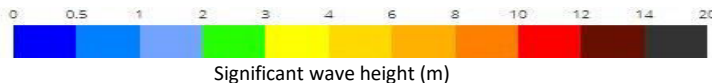
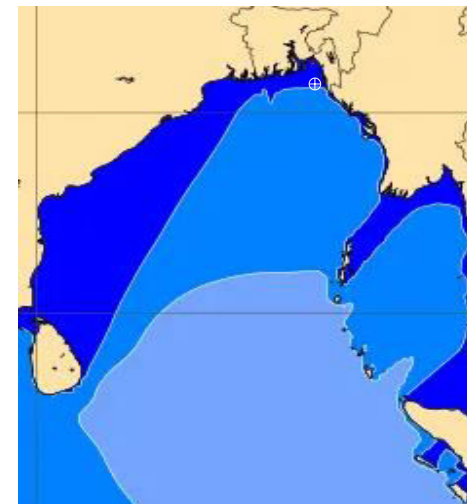
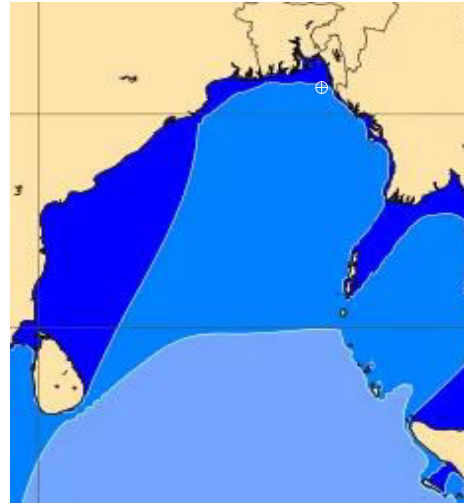
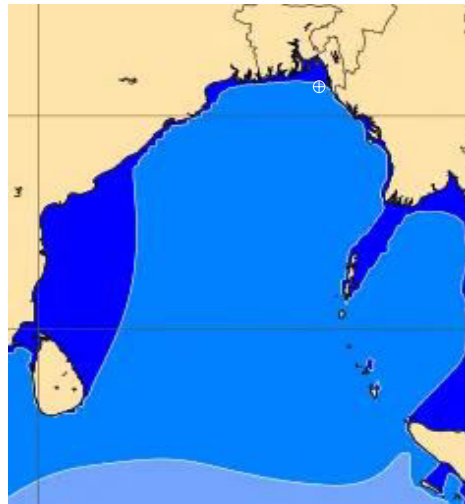
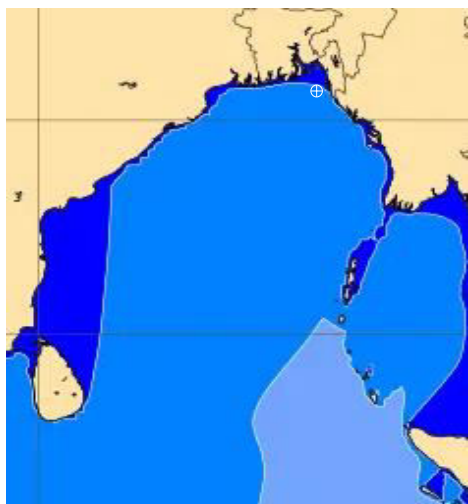
Date	Time	Max Wind Spd (kts)	Wind Direction	Wave Ht (m)	Sea State	Baro Pressure	Air Temp		Sea Surface Temp	Humidity (%)	Prob of Rain (%)	Sea State	Wave Ht (m)
							Max	Min					
17-05-24	0001	9	W	0.6	3	1008	35	26	30	82%	13% (0.0 mm)	0	0
	0600	5	WSW	0.6	3	1008			29	91%	15% (0.0 mm)	1	0 - 0.1
	1200	8	W	0.7	3	1007			30	73%	14% (0.0 mm)	2	0.1 - 0.5
	1800	13	W	0.8	3	1005			30	86%	12% (0.0 mm)	3	0.5 - 1.25
18-05-24	0001	9	SW	0.7	3	1006	35	26	30	82%	14% (0.0 mm)	4	1.25 - 2.5
	0600	6	WSW	0.6	3	1007			29	94%	11% (0.0 mm)	5	2.5 - 4.0
	1200	8	SW	0.7	3	1006			30	71%	12% (0.0 mm)	6	4.0 - 6.0
	1800	16	W	0.9	3	1003			30	85%	16% (0.0 mm)	7	6.0 - 9.0
19-05-24	0001	9	SW	0.8	3	1005	35	26	30	82%	12% (0.0 mm)	8	9.0 - 14.0
	0600	9	SSW	0.8	3	1005			29	94%	13% (0.0 mm)	9	Over 14.0
	1200	7	WSW	0.8	3	1006			30	73%	15% (0.0 mm)		
	1800	11	W	0.9	3	1002			30	82%	10% (0.0 mm)		
20-05-24	0001	9	WSW	0.9	3	1004	35	26	30	85%	12% (0.0 mm)		
	0600	6	SW	0.8	3	1005			29	94%	17% (0.0 mm)		
	1200	7	SSW	0.8	3	1004			30	71%	11% (0.0 mm)		
	1800	10	SW	0.9	3	1002			30	85%	15% (0.0 mm)		

**17 May 24 Fri (Probability 98%)**

**18 May 24 Sat (Probability 95%)**

**19 May 24 Sun (Probability 90%)**

**20 May 24 Mon (Probability 80%)**



Significant wave height (m)



# MARINE WEATHER FORECAST- 20 NM WEST OF ELEPHANT POINT (Lat 21° 10' N, Long 091° 42' E)

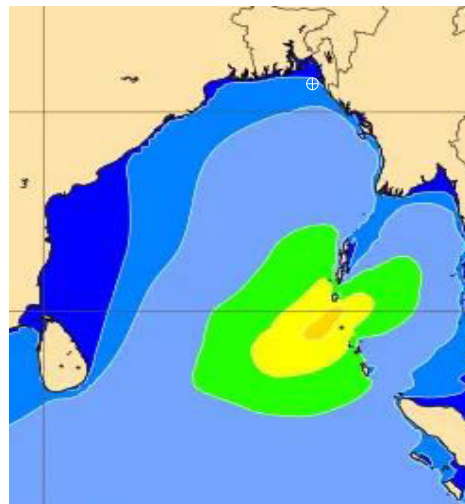
**DATE : 17 to 24 May 2024**

Date	Time	Max Wind Spd (kts)	Wind Direction	Wave Ht (m)	Sea State	Baro Pressure	Air Temp		Sea Surface Temp	Humidity (%)	Prob of Rain (%)	Sea State	Wave Ht (m)
							Max	Min					
21-05-24	0001	10	SW	0.8	3	1004	35	26	30	83%	15% (0.0 mm)	0	0
	0600	7	S	0.8	3	1004			30	95%	12% (0.0 mm)	1	0 - 0.1
	1200	6	WSW	0.9	3	1005			31	74%	13% (0.0 mm)	2	0.1 - 0.5
	1800	10	WSW	0.9	3	1002			30	82%	16% (0.0 mm)	3	0.5 - 1.25
22-05-24	0001	7	SW	0.8	3	1005	35	26	30	86%	14% (0.0 mm)	4	1.25 - 2.5
	0600	5	E	0.8	3	1004			30	93%	12% (0.0 mm)	5	2.5 - 4.0
	1200	6	SW	0.8	3	1005			31	72%	15% (0.0 mm)	6	4.0 - 6.0
	1800	8	W	0.7	3	1002			30	84%	14% (0.0 mm)	7	6.0 - 9.0
23-05-24	0001	5	SSW	0.7	3	1004	35	26	30	81%	13% (0.0 mm)	8	9.0 - 14.0
	0600	6	NE	0.8	3	1003			30	95%	15% (0.0 mm)	9	Over 14.0
	1200	12	WNW	0.9	3	1002			31	73%	12% (0.0 mm)		
	1800	10	WNW	0.9	3	1000			30	86%	16% (0.0 mm)		
24-05-24	0001	5	ESE	0.8	3	1001	35	26	30	82%	12% (0.0 mm)		
	0600	6	NE	0.8	3	1001			30	94%	14% (0.0 mm)		
	1200	8	WNW	0.9	3	1002			31	71%	11% (0.0 mm)		
	1800	11	NW	0.9	3	1000			30	85%	15% (0.0 mm)		

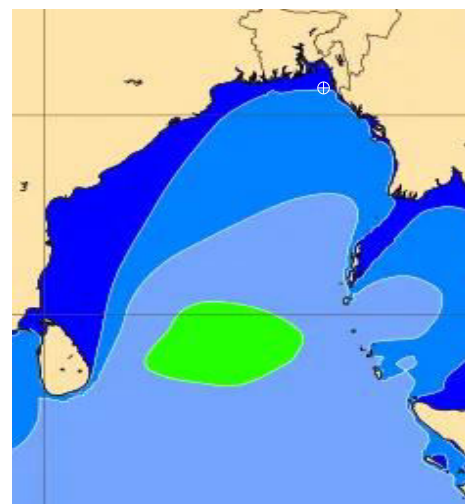
**21 May 24 Tue (Probability 70%)**



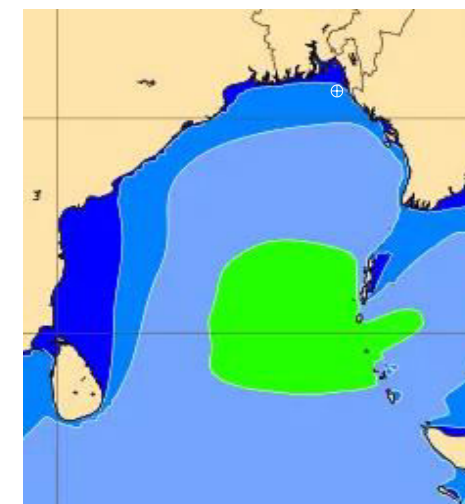
**22 May 24 Wed (Probability 60%)**



**23 May 24 Thu (Probability 50%)**



**24 May 24 Fri (Probability 50%)**



0 0.5 1 2 3 4 6 8 10 12 14 20



Significant wave height (m)

# MARINE WEATHER FORECAST- 15 NM WEST OF ST. MARTIN'S LIGHT HOUSE (Lat 20° 37' N, Long 092° 03' E)

**DATE : 17 to 24 May 2024**

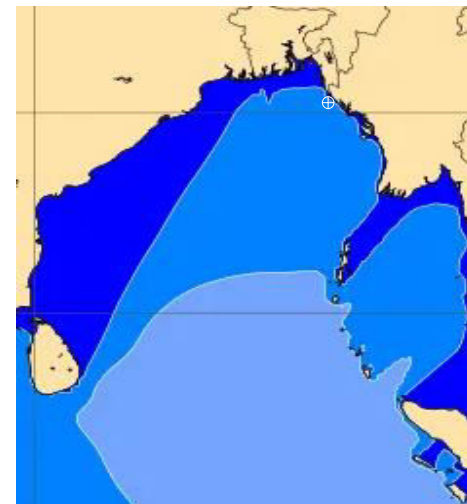
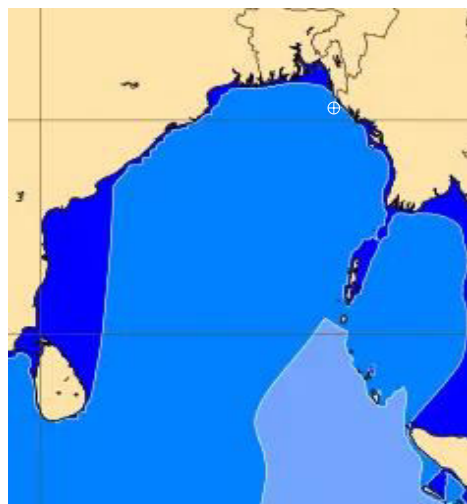
Date	Time	Max Wind Spd (kts)	Wind Direction	Wave Ht (m)	Sea State	Baro Pressure	Air Temp		Sea Surface Temp	Humidity (%)	Prob of Rain(%)	Sea State	Wave Ht (m)
							Max	Min					
17-05-24	0001	11	WNW	0.8	3	1008	35	26	30	85%	14% (0.0 mm)	0	0
	0600	7	WNW	0.7	3	1008			30	94%	15% (0.0 mm)	1	0 - 0.1
	1200	9	WNW	0.8	3	1009			31	72%	13% (0.0 mm)	2	0.1 - 0.5
	1800	12	W	0.9	3	1006			31	83%	15% (0.0 mm)	3	0.5 - 1.25
18-05-24	0001	13	W	0.9	3	1008	35	26	30	82%	16% (0.0 mm)	4	1.25 - 2.5
	0600	8	W	0.9	3	1006			30	95%	12% (0.0 mm)	5	2.5 - 4.0
	1200	9	WNW	1.0	3	1007			31	76%	15% (0.0 mm)	6	4.0 - 6.0
	1800	19	W	1.0	3	1003			31	83%	14% (0.0 mm)	7	6.0 - 9.0
19-05-24	0001	8	W	1.0	3	1006	35	26	30	84%	11% (0.0 mm)	8	9.0 - 14.0
	0600	8	W	1.0	3	1005			30	92%	12% (0.0 mm)	9	Over 14.0
	1200	9	W	1.0	3	1006			31	76%	13% (0.0 mm)		
	1800	15	W	1.1	3	1002			31	83%	15% (0.0 mm)		
20-05-24	0001	9	W	1.0	3	1005	35	26	30	85%	12% (0.0 mm)		
	0600	10	W	1.1	3	1004			30	94%	14% (0.0 mm)		
	1200	8	SW	1.0	3	1005			31	76%	16% (0.0 mm)		
	1800	13	SW	1.1	3	1002			31	83%	12% (0.0 mm)		

**17 May 24 Fri (Probability 98%)**

**18 May 24 Sat (Probability 95%)**

**19 May 24 Sun (Probability 90%)**

**20 May 24 Mon (Probability 80%)**



Significant wave height (m)

# MARINE WEATHER FORECAST- 15 NM WEST OF ST. MARTIN'S LIGHT HOUSE (Lat 20° 37' N, Long 092° 03' E)

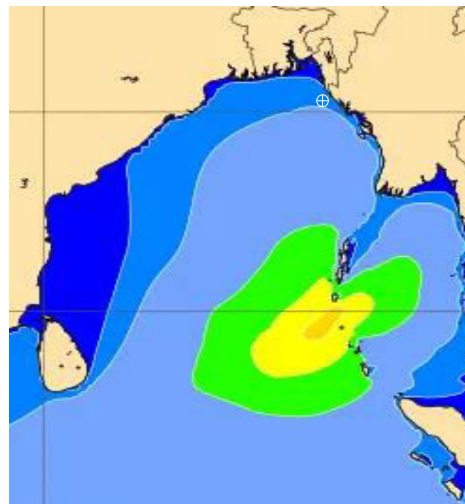
**DATE : 17 to 24 May 2024**

Date	Time	Max Wind Spd (kts)	Wind Direction	Wave Ht (m)	Sea State	Baro Pressure	Air Temp		Sea Surface Temp	Humidity (%)	Prob of Rain (%)	Sea State	Wave Ht (m)
							Max	Min					
21-05-24	0001	10	WSW	0.9	3	1005	35	26	30	83%	12% (0.0 mm)	0	0
	0600	8	WSW	0.9	3	1004			30	96%	14% (0.0 mm)	1	0 - 0.1
	1200	7	SW	0.9	3	1006			31	72%	13% (0.0 mm)	2	0.1 - 0.5
	1800	10	WSW	1.0	3	1000			31	84%	16% (0.0 mm)	3	0.5 - 1.25
22-05-24	0001	7	W	1.0	3	1002	35	26	30	81%	12% (0.0 mm)	4	1.25 - 2.5
	0600	6	W	0.9	3	1004			30	92%	14% (0.0 mm)	5	2.5 - 4.0
	1200	5	ESE	0.9	3	1004			31	73%	11% (0.0 mm)	6	4.0 - 6.0
	1800	9	WSW	1.2	3	1002			31	86%	12% (0.0 mm)	7	6.0 - 9.0
23-05-24	0001	6	WNW	1.2	3	1002	35	26	30	83%	13% (0.0 mm)	8	9.0 - 14.0
	0600	5	SSE	1.3	4	1003			30	96%	10% (0.0 mm)	9	Over 14.0
	1200	6	NE	1.3	4	1002			31	75%	12% (0.0 mm)		
	1800	11	W	1.3	4	1000			31	83%	14% (0.0 mm)		
24-05-24	0001	6	N	1.3	4	1002	35	26	30	83%	12% (0.0 mm)		
	0600	7	NNE	1.4	4	1001			30	95%	14% (0.0 mm)		
	1200	6	NW	1.4	4	1002			31	74%	16% (0.0 mm)		
	1800	11	WNW	1.4	4	1000			31	86%	13% (0.0 mm)		

**21 May 24 Tue (Probability 70%)**



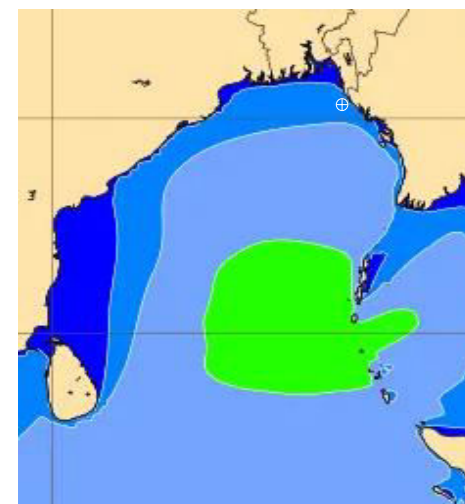
**22 May 24 Wed (Probability 60%)**



**23 May 24 Thu (Probability 50%)**



**24 May 24 Fri (Probability 50%)**



0 0.5 1 2 3 4 6 8 10 12 14 20



Significant wave height (m)



# MARINE WEATHER FORECAST- 40 NM ESE OF PAYRA FAIRWAY (Lat 21° 07' N, Long 090° 45' E)

**DATE : 17 to 24 May 2024**

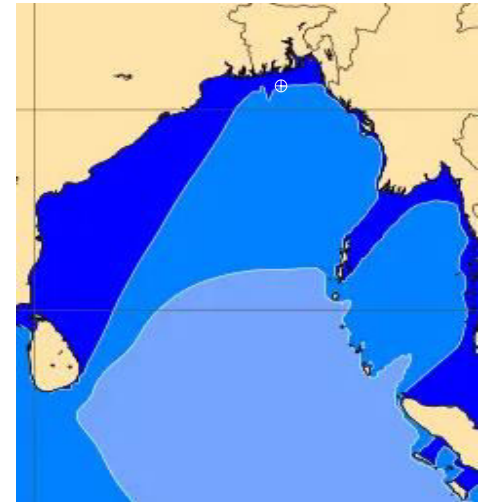
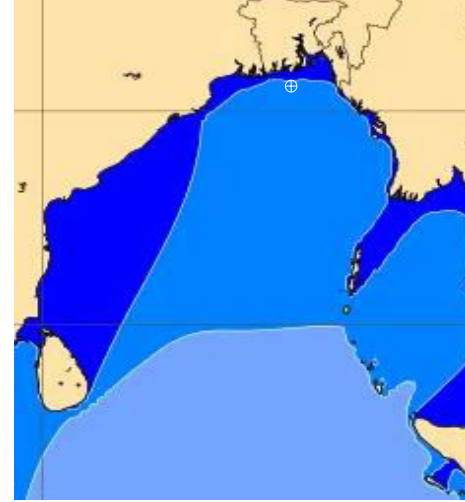
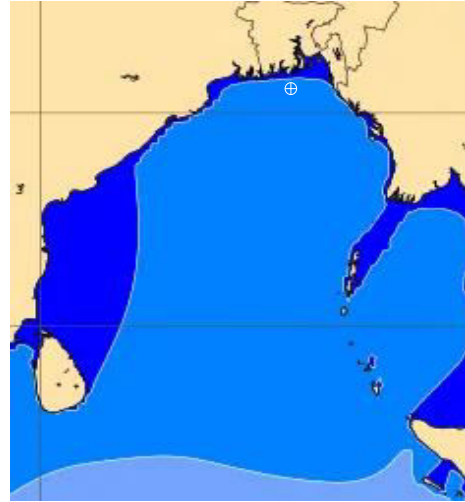
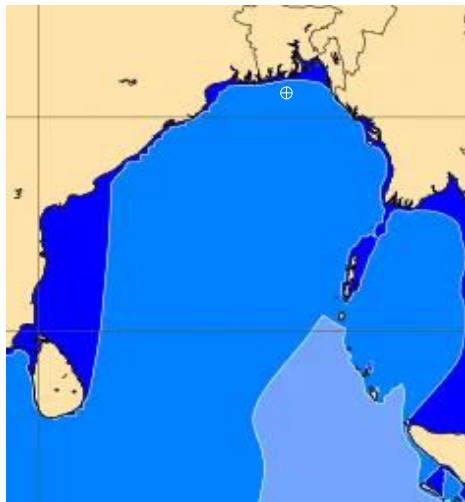
Date	Time	Max Wind Spd (kts)	Wind Direction	Wave Ht (m)	Sea State	Baro Pressure	Air Temp		Sea Surface Temp	Humidity (%)	Prob of Rain (%)	Sea State	Wave Ht (m)
							Max	Min					
17-05-24	0001	11	WSW	0.8	3	1008	36	26	30	83%	16% (0.0 mm)	0	0
	0600	12	WSW	0.9	3	1008			30	95%	13% (0.0 mm)	1	0 - 0.1
	1200	9	W	0.9	3	1009			31	74%	14% (0.0 mm)	2	0.1 - 0.5
	1800	12	WSW	1.0	3	1006			31	86%	12% (0.0 mm)	3	0.5 - 1.25
18-05-24	0001	16	WSW	1.3	4	1006	36	26	30	82%	15% (0.0 mm)	4	1.25 - 2.5
	0600	11	WSW	1.3	4	1006			30	94%	11% (0.0 mm)	5	2.5 - 4.0
	1200	11	WSW	1.3	4	1007			31	73%	12% (0.0 mm)	6	4.0 - 6.0
	1800	15	WSW	1.3	4	1004			31	85%	13% (0.0 mm)	7	6.0 - 9.0
19-05-24	0001	14	SW	1.3	4	1005	36	26	30	81%	15% (0.0 mm)	8	9.0 - 14.0
	0600	12	SW	1.3	4	1005			30	92%	12% (0.0 mm)	9	Over 14.0
	1200	10	WSW	1.2	3	1006			31	73%	14% (0.0 mm)		
	1800	11	SW	1.2	3	1002			31	82%	11% (0.0 mm)		
20-05-24	0001	12	SW	1.2	3	1004	36	26	30	84%	12% (0.0 mm)		
	0600	10	SW	1.2	3	1004			30	93%	13% (0.0 mm)		
	1200	11	SSW	1.2	3	1005			31	76%	15% (0.0 mm)		
	1800	13	SW	1.2	3	1003			31	82%	15% (0.0 mm)		

**17 May 24 Fri (Probability 98%)**

**18 May 24 Sat (Probability 95%)**

**19 May 24 Sun (Probability 90%)**

**20 May 24 Mon (Probability 80%)**



Significant wave height (m)

# MARINE WEATHER FORECAST- 40 NM ESE OF PAYRA FAIRWAY (Lat 21° 07' N, Long 090° 45' E)

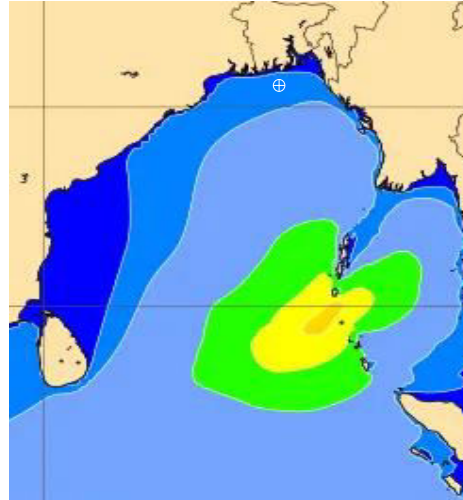
**DATE : 17 to 24 May 2024**

Date	Time	Max Wind Spd (kts)	Wind Direction	Wave Ht (m)	Sea State	Baro Pressure	Air Temp		Sea Surface Temp	Humidity (%)	Prob of Rain (%)	Sea State	Wave Ht (m)
							Max	Min					
21-05-24	0001	16	SSW	1.3	4	1003	36	26	30	83%	16% (0.0 mm)	0	0
	0600	15	SSW	1.3	4	1004			30	94%	14% (0.0 mm)	1	0 - 0.1
	1200	10	SSW	1.3	4	1003			31	72%	12% (0.0 mm)	2	0.1 - 0.5
	1800	12	SW	1.3	4	1002			31	85%	13% (0.0 mm)	3	0.5 - 1.25
22-05-24	0001	13	WSW	1.3	4	1002	36	26	30	86%	12% (0.0 mm)	4	1.25 - 2.5
	0600	10	SW	1.3	4	1003			30	92%	14% (0.0 mm)	5	2.5 - 4.0
	1200	9	SSW	1.2	3	1002			31	74%	11% (0.0 mm)	6	4.0 - 6.0
	1800	8	WSW	1.1	3	1001			31	82%	10% (0.0 mm)	7	6.0 - 9.0
23-05-24	0001	11	SW	1.2	3	1002	36	26	30	83%	12% (0.0 mm)	8	9.0 - 14.0
	0600	8	SW	1.1	3	1001			30	96%	11% (0.0 mm)	9	Over 14.0
	1200	7	SSE	1.0	3	1002			31	74%	13% (0.0 mm)		
	1800	6	SSW	1.0	3	1000			31	85%	12% (0.0 mm)		
24-05-24	0001	8	WSW	1.0	3	1002	36	26	30	83%	12% (0.0 mm)		
	0600	9	SSW	1.0	3	1001			30	95%	15% (0.0 mm)		
	1200	10	SW	1.1	3	1002			31	74%	14% (0.0 mm)		
	1800	13	SSW	1.1	3	1000			31	83%	16% (0.0 mm)		

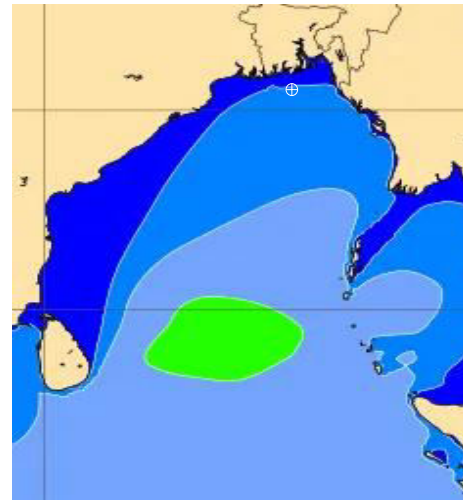
**21 May 24 Tue (Probability 70%)**



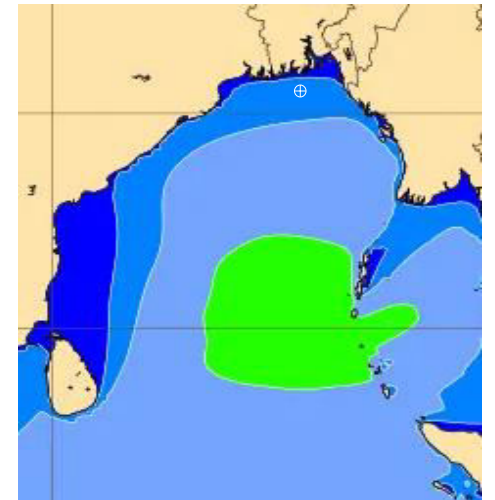
**22 May 24 Wed (Probability 60%)**



**23 May 24 Thu (Probability 50%)**



**24 May 24 Fri (Probability 50%)**



0 0.5 1 2 3 4 6 8 10 12 14 20



Significant wave height (m)



# MARINE WEATHER FORECAST- 10 NM SOUTH OF MONGLA FAIRWAY (Lat 21° 16'N, Long 089° 34'E)

**DATE : 17 to 24 May 2024**

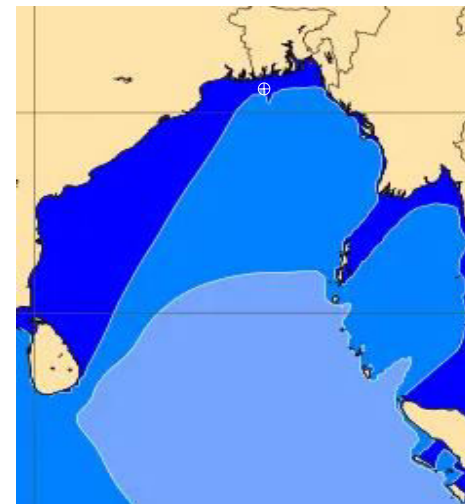
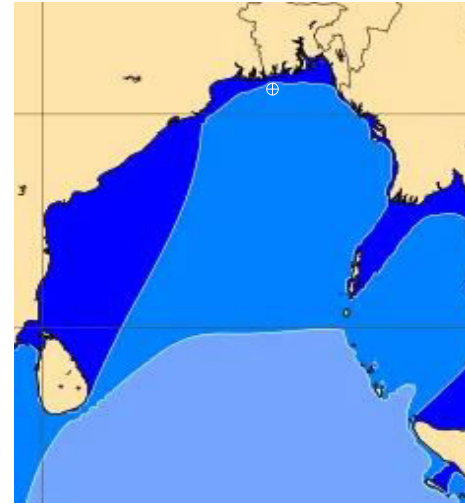
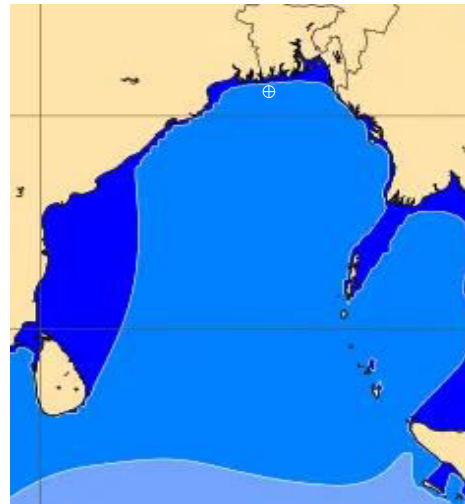
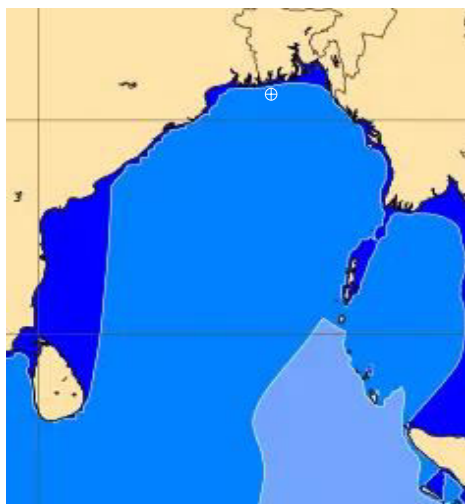
Date	Time	Max Wind Spd (kts)	Wind Direction	Wave Ht (m)	Sea State	Baro Pressure	Air Temp		Sea Surface Temp	Humidity (%)	Prob of Rain (%)	Sea State	Wave Ht (m)
							Max	Min					
17-05-24	0001	13	SW	0.8	3	1007	36	26	30	84%	13% (0.0 mm)	0	0
	0600	14	WSW	1.0	3	1008			30	92%	15% (0.0 mm)	1	0 - 0.1
	1200	10	WSW	1.0	3	1008			30	73%	14% (0.0 mm)	2	0.1 - 0.5
	1800	15	SW	1.4	4	1006			30	86%	16% (0.0 mm)	3	0.5 - 1.25
18-05-24	0001	21	SW	1.5	4	1006	36	26	30	82%	12% (0.0 mm)	4	1.25 - 2.5
	0600	18	SW	1.4	4	1005			30	94%	13% (0.0 mm)	5	2.5 - 4.0
	1200	15	SW	1.4	4	1006			30	72%	16% (0.0 mm)	6	4.0 - 6.0
	1800	17	SW	1.4	4	1003			30	83%	15% (0.0 mm)	7	6.0 - 9.0
19-05-24	0001	19	SW	1.4	4	1004	36	26	30	85%	14% (0.0 mm)	8	9.0 - 14.0
	0600	17	SW	1.4	4	1004			30	91%	12% (0.0 mm)	9	Over 14.0
	1200	16	SW	1.3	4	1005			30	72%	14% (0.0 mm)		
	1800	15	SW	1.4	4	1002			30	83%	16% (0.0 mm)		
20-05-24	0001	20	SW	1.4	4	1004	36	26	30	83%	12% (0.0 mm)		
	0600	17	SSW	1.4	4	1004			30	96%	14% (0.0 mm)		
	1200	15	SW	1.4	4	1003			30	75%	13% (0.0 mm)		
	1800	17	SSW	1.4	4	1002			30	84%	16% (0.0 mm)		

**17 May 24 Fri (Probability 98%)**

**18 May 24 Sat (Probability 95%)**

**19 May 24 Sun (Probability 90%)**

**20 May 24 Mon (Probability 80%)**



Significant wave height (m)

**MARINE WEATHER FORECAST- 10 NM SOUTH OF MONGLA FAIRWAY (Lat 21° 16' N, Long 089° 34' E)**

**DATE : 17 to 24 May 2024**

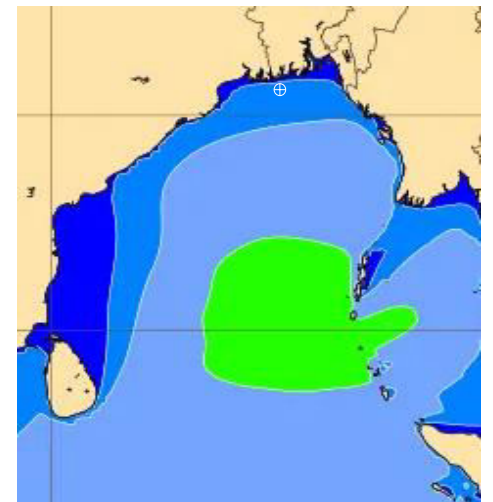
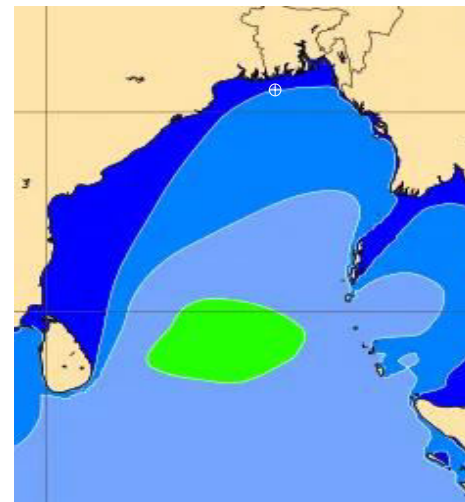
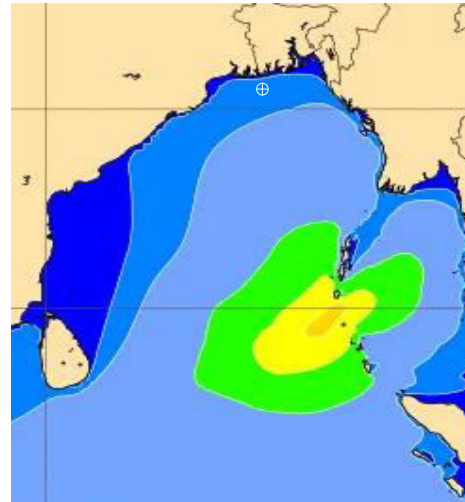
Date	Time	Max Wind Spd (kts)	W8nd Direction	Wave Ht (m)	Sea State	Baro Pressure	Air Temp		Sea Surface Temp	Humidity (%)	Prob of Rain (%)	Sea State	Wave Ht (m)
							Max	Min					
21-05-24	0001	22	WSW	1.4	4	1005	36	26	30	83%	13% (0.0 mm)	0	0
	0600	17	SW	1.5	4	1003			30	94%	15% (0.0 mm)	1	0 - 0.1
	1200	9	SW	1.4	4	1004			30	76%	14% (0.0 mm)	2	0.1 - 0.5
	1800	11	S	1.2	3	1002			30	82%	16% (0.0 mm)	3	0.5 - 1.25
22-05-24	0001	16	SW	1.1	3	1005	36	26	30	84%	12% (0.0 mm)	4	1.25 - 2.5
	0600	11	SW	1.1	3	1004			30	95%	14% (0.0 mm)	5	2.5 - 4.0
	1200	8	SW	1.1	3	1005			30	72%	11% (0.0 mm)	6	4.0 - 6.0
	1800	10	S	1.1	3	1002			30	84%	12% (0.0 mm)	7	6.0 - 9.0
23-05-24	0001	9	SW	1.0	3	1003	36	26	30	83%	15% (0.0 mm)	8	9.0 - 14.0
	0600	6	S	1.0	3	1003			30	96%	14% (0.0 mm)	9	Over 14.0
	1200	5	SSE	1.0	3	1003			30	72%	16% (0.0 mm)		
	1800	7	S	1.0	3	1000			30	84%	12% (0.0 mm)		
24-05-24	0001	9	SW	1.0	3	1001	36	26	30	81%	13% (0.0 mm)		
	0600	6	NE	1.0	3	1000			30	92%	15% (0.0 mm)		
	1200	7	NW	1.0	3	1001			30	75%	14% (0.0 mm)		
	1800	10	WNW	1.1	3	1000			30	83%	12% (0.0 mm)		

**21 May 24 Tue (Probability 70%)**

**22 May 24 Wed (Probability 60%)**

**23 May 24 Thu (Probability 50%)**

**24 May 24 Fri (Probability 50%)**



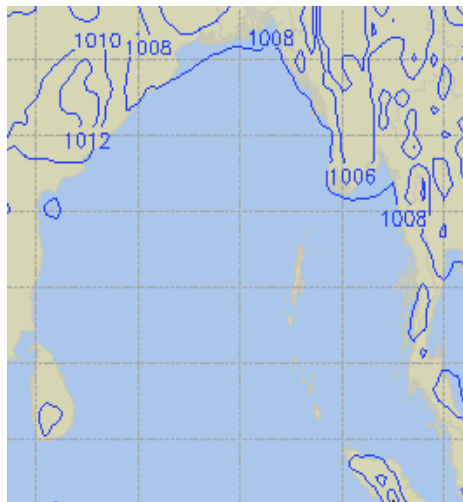
0 0.5 1 2 3 4 6 8 10 12 14 20



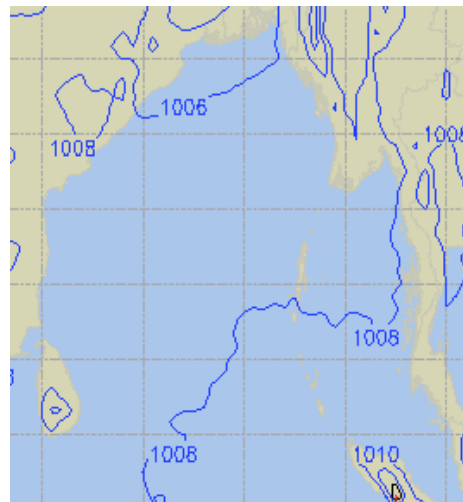
Significant wave height (m)

# PREDICTED SURFACE PRESSURE FORECAST (17 to 23 May 2024)

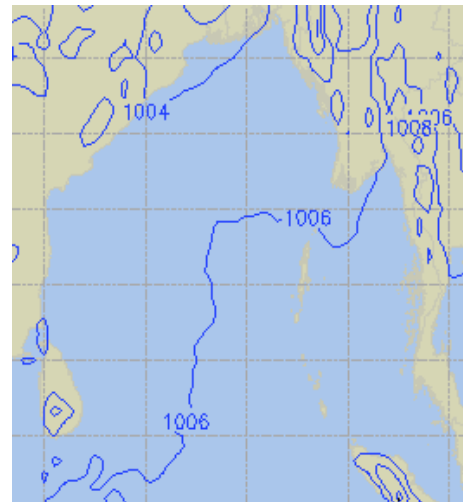
**17 May 24 Fri (Probability 98%)**



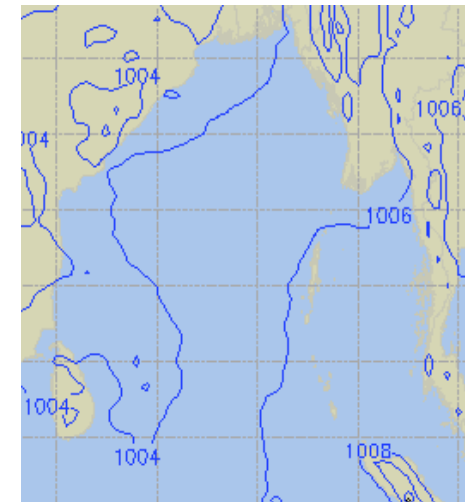
**18 May 24 Sat (Probability 95%)**



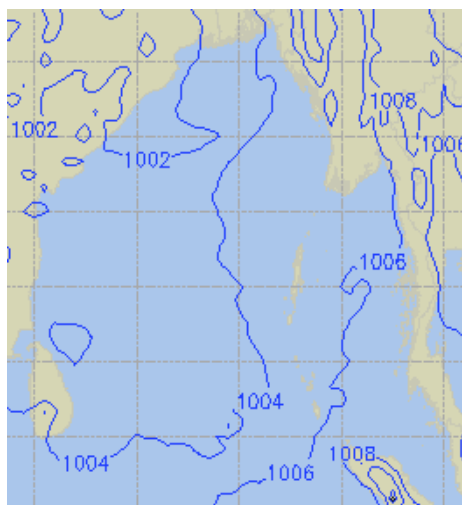
**19 May 24 Sun (Probability 90%)**



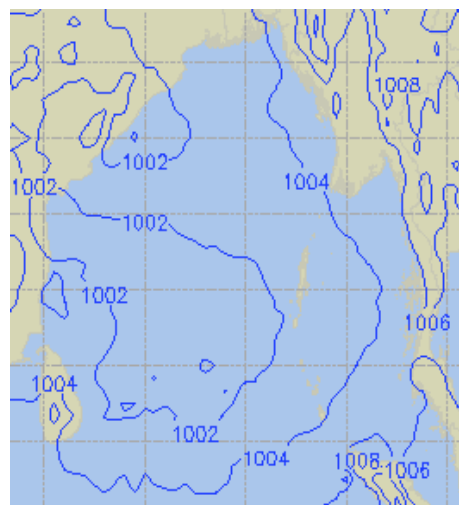
**20 May 24 Mon (Probability 80%)**



**21 May 24 Tue (Probability 70%)**



**22 May 24 Wed (Probability 60%)**



**23 May 24 Thu (Probability 60%)**

