



**SUMMARY OF MARINE WEATHER FORECAST**  
**COASTAL AREA OF BANGLADESH**  
**DATE: 17 to 24 April 2026**



Fleet Forecast	Trough of low lies over West Bengal and adjoining area. Seasonal low lies over South Bay of Bengal
Wind Direction, Speed	South-West/ Southerly 10-15 kts
Wave Height & Sea State	Ctg Outer Anchorage: 0.2 to 0.6 m (Sea state: 2 to 3) Abeam to Cox's Bazar: 0.9 to 1.2 m (Sea state: 3) St. Martin's Island: 0.9 to 1.3 m (Sea state 3 to 4) Payra Fairway Buoy: 1.0 to 1.6 m (Sea state: 3 to 4) Mongla Fairway Buoy: 1.1 to 1.6 m (Sea state: 3 to 4) Outer EEZ: 1.1 to 1.5 m (Sea state: 3 to 4)
Sea Surface Temperature	26° C - 30° C
Baro Pressure	1008-1011 mb
Rainfall	Partly cloudy to cloudy sky & temporary Rain/thunder Showers with gusty wind is likely to occur over Bay of Bengal and adjoining area.
Fog & Visibility	Hazy condition over the Bay of Bengal & coastal area, Visibility 1.5 – 5.0 km

**Marine Weather Outlook (17 to 24 April 2026):**

- Partly cloudy to cloudy sky & temporary Rain/thunder Showers with gusty wind is likely to occur over Bay of Bengal and adjoining area.
- Hazy condition over the Bay of Bengal & coastal area.
- Day and night temperature may rise.



## MARINE WEATHER FORECAST (17 to 24 April 2026) PATENGA POINT (22° 12' N, 091° 38' E)



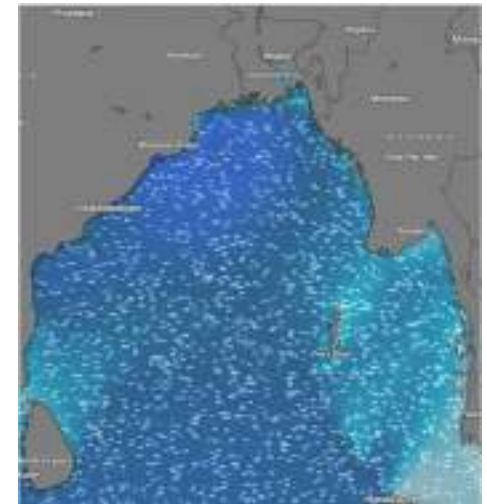
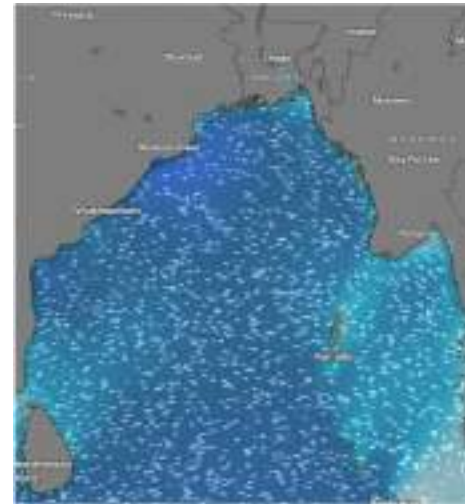
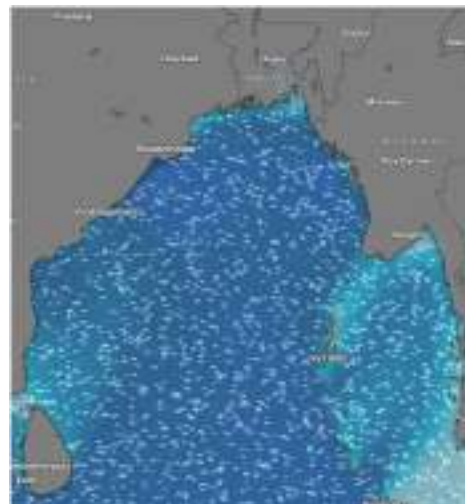
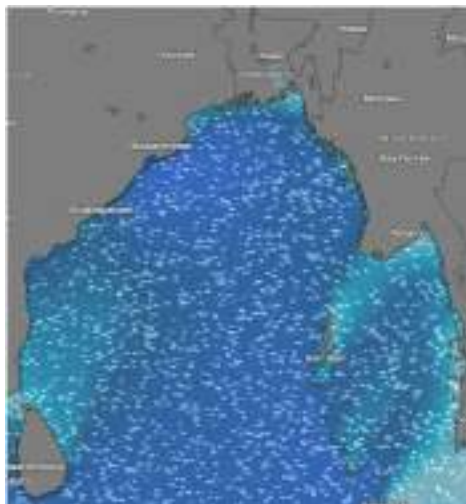
Date	Time	Air Temp (°C)		Sea Surface Temp (°C)	Baro Pressure (mbar)	Wind Direction	Wind Spd (kts)		Wave Ht (m)	Sea State	Humidity (%)	Prob of Rain (%)	Amount of Rain (mm)
		Max	Min				Gusting	Avg					
17-04-26 (Friday)	0001	32	26	28	1010	SSW	07	04	0.2	2	88	09	0.0
	0600			27	1011	SSE	05	03	0.2	2	90	08	0.0
	1200			30	1009	SSW	13	09	0.2	2	74	10	0.0
	1800			29	1008	SW	12	08	0.4	2	86	13	0.0
18-04-26 (Saturday)	0001	32	26	28	1009	SSW	09	05	0.3	2	87	11	0.0
	0600			27	1010	SE	07	04	0.2	2	90	10	0.0
	1200			30	1008	SSW	11	07	0.2	2	75	12	0.0
	1800			29	1007	SSW	12	08	0.3	2	86	15	0.0
19-04-26 (Sunday)	0001	32	26	28	1009	SW	10	06	0.3	2	88	24	0.1
	0600			27	1010	SSE	11	06	0.3	2	90	18	0.0
	1200			30	1008	SSW	13	09	0.3	2	74	12	0.0
	1800			29	1007	SSW	15	11	0.5	3	87	15	0.0
20-04-26 (Monday)	0001	31	26	28	1008	SSW	13	09	0.4	2	87	10	0.0
	0600			27	1009	S	13	09	0.4	2	89	13	0.0
	1200			30	1008	SSW	18	14	0.5	3	73	08	0.0
	1800			29	1007	SSW	16	12	0.6	3	85	10	0.0

17 Apr 2026

18 Apr 2026

19 Apr 2026

20 Apr 2026



Significant wave height (m)



## MARINE WEATHER FORECAST (17 to 24 April 2026) PATENGA POINT (22° 12' N, 091° 38' E)



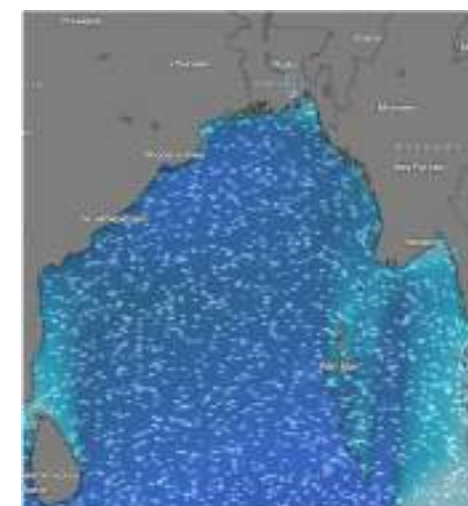
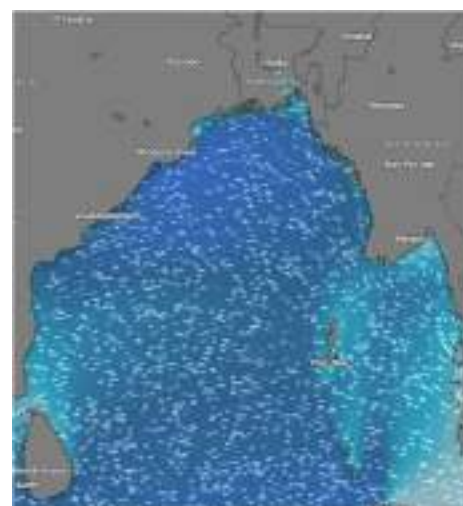
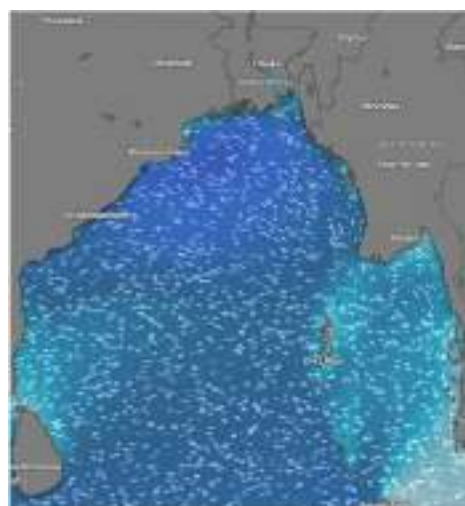
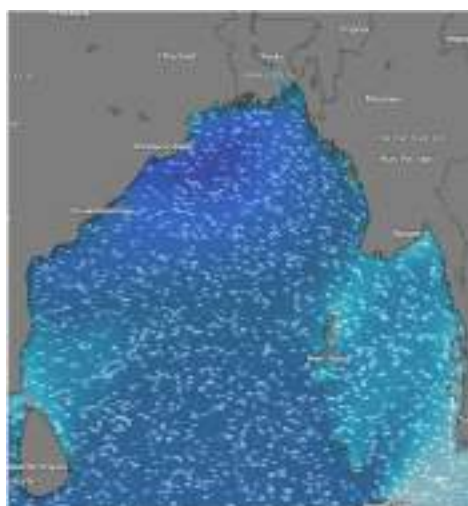
Date	Time	Air Temp (°C)		Sea Surface Temp (°C)	Baro Pressure (mbar)	Wind Direction	Wind Spd (kts)		Wave Ht (m)	Sea State	Humidity (%)	Prob of Rain (%)	Amount of Rain (mm)
		Max	Min				Gusting	Avg					
21-04-26 (Tuesday)	0001	31	26	28	1008	SSW	14	10	0.4	2	92	10	0.0
	0600			27	1009	SSE	16	12	0.5	3	93	13	0.0
	1200			30	1007	SSW	20	15	0.6	3	76	08	0.0
	1800			29	1006	SSW	17	13	0.5	3	83	10	0.0
22-04-26 (Wednesday)	0001	32	26	28	1007	SSW	15	11	0.5	3	92	10	0.0
	0600			27	1008	S	14	10	0.5	3	93	13	0.0
	1200			30	1007	SW	17	13	0.5	3	76	08	0.0
	1800			29	1006	SW	14	10	0.4	2	83	10	0.0
23-04-26 (Thursday)	0001	32	26	28	1007	S	15	11	0.5	3	87	08	0.0
	0600			27	1008	SSE	13	09	0.4	2	89	11	0.0
	1200			30	1007	SSW	14	10	0.4	2	72	06	0.0
	1800			29	1006	SW	13	09	0.4	2	81	09	0.0
24-04-26 (Friday)	0001	32	26	28	1007	SSW	11	07	0.3	2	87	08	0.0
	0600			27	1008	S	10	06	0.3	2	89	10	0.0
	1200			30	1007	SSW	11	07	0.3	2	72	07	0.0
	1800			28	1006	SW	09	05	0.3	2	83	08	0.0

21 Apr 2026

22 Apr 2026

23 Apr 2026

24 Apr 2026



Significant wave height (m)



# MARINE WEATHER FORECAST (17 to 24 April 2026)

## ABEAM TO KUTUBDIA (21° 51' N, 091° 40' E)



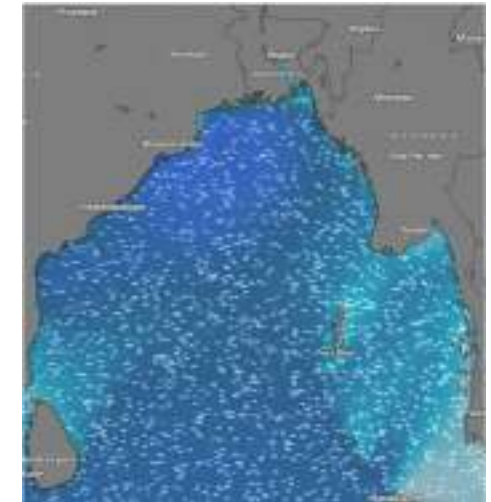
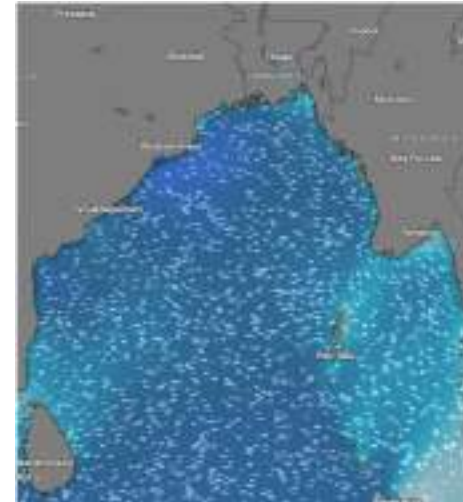
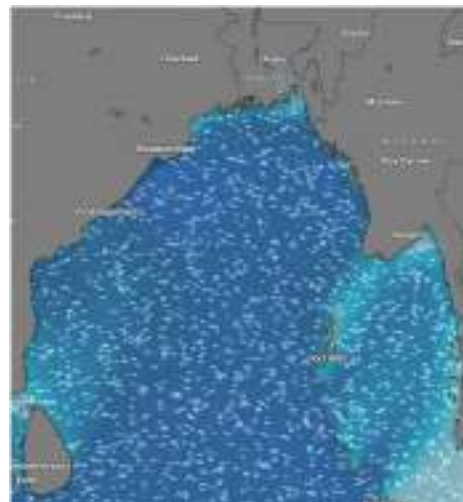
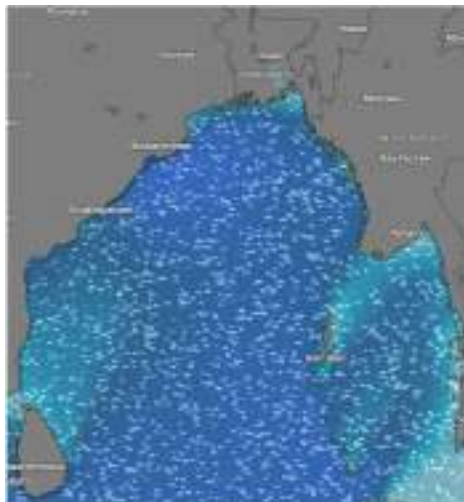
Date	Time	Air Temp (°C)		Sea Surface Temp (°C)	Baro Pressure (mbar)	Wind Direction	Wind Spd (kts)		Wave Ht (m)	Sea State	Humidity (%)	Prob of Rain (%)	Amount of Rain (mm)
		Max	Min				Gusting	Avg					
17-04-26 (Friday)	0001	32	26	28	1010	SW	11	07	0.4	2	85	11	0.0
	0600			27	1011	SW	07	04	0.4	2	90	14	0.0
	1200			30	1009	SSW	11	07	0.4	2	78	08	0.0
	1800			29	1008	SW	14	10	0.5	3	84	15	0.0
18-04-26 (Saturday)	0001	32	26	28	1009	SW	10	06	0.5	3	87	11	0.0
	0600			27	1010	SSW	05	03	0.4	2	91	15	0.0
	1200			30	1008	SW	10	06	0.4	2	75	10	0.0
	1800			29	1007	SSW	13	09	0.4	2	86	12	0.0
19-04-26 (Sunday)	0001	32	26	28	1009	W	12	08	0.5	3	88	09	0.0
	0600			27	1010	SSW	11	08	0.4	2	90	12	0.0
	1200			30	1008	SW	12	08	0.4	2	74	07	0.0
	1800			29	1007	SW	16	12	0.6	3	87	15	0.0
20-04-26 (Monday)	0001	32	26	28	1008	W	13	09	0.6	3	88	09	0.0
	0600			27	1009	SSW	14	10	0.5	3	90	12	0.0
	1200			30	1008	S	18	14	0.6	3	74	07	0.0
	1800			29	1007	SW	17	13	0.7	3	86	14	0.0

17 Apr 2026

18 Apr 2026

19 Apr 2026

20 Apr 2026



Significant wave height (m)



## MARINE WEATHER FORECAST (17 to 24 April 2026)

### ABEAM TO KUTUBDIA (21° 51' N, 091° 40' E)



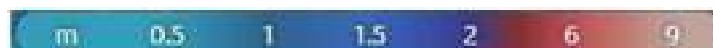
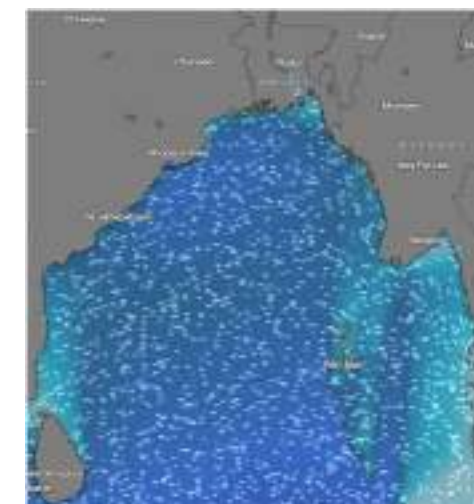
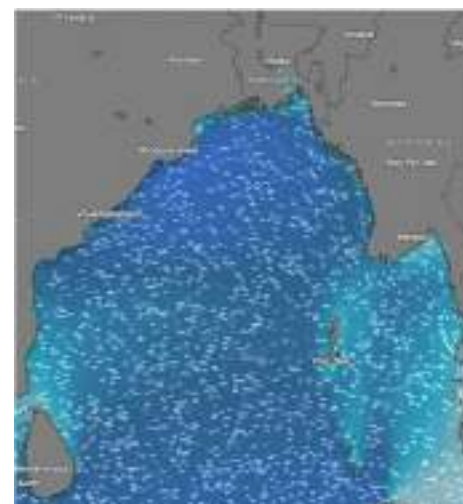
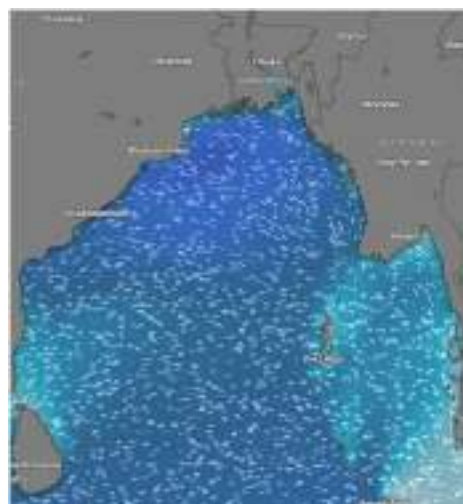
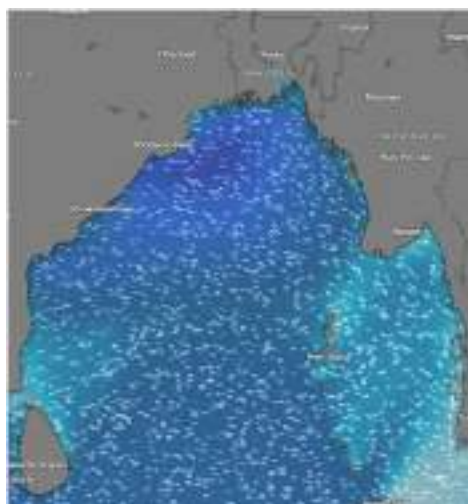
Date	Time	Air Temp (°C)		Sea Surface Temp (°C)	Baro Pressure (mbar)	Wind Direction	Wind Spd (kts)		Wave Ht (m)	Sea State	Humidity (%)	Prob of Rain (%)	Amount of Rain (mm)
		Max	Min				Gusting	Avg					
21-04-26 (Tuesday)	0001	32	26	28	1008	W	16	12	0.6	3	88	10	0.0
	0600			27	1009	SW	16	11	0.6	3	90	11	0.0
	1200			30	1007	S	19	15	0.8	3	76	13	0.0
	1800			29	1006	W	18	14	0.7	3	82	11	0.0
22-04-26 (Wednesday)	0001	32	26	28	1007	W	15	09	0.6	3	86	10	0.0
	0600			27	1008	SW	16	11	0.7	3	89	11	0.0
	1200			30	1007	S	19	15	0.6	3	75	13	0.0
	1800			29	1006	SW	18	14	0.6	3	86	11	0.0
23-04-26 (Thursday)	0001	32	26	28	1007	SW	14	08	0.6	3	88	08	0.0
	0600			27	1008	SW	11	06	0.5	3	90	11	0.0
	1200			30	1007	S	10	07	0.5	3	72	12	0.0
	1800			29	1006	W	15	12	0.5	3	81	10	0.0
24-04-26 (Friday)	0001	32	26	28	1007	SW	13	09	0.5	3	87	10	0.0
	0600			27	1008	SSW	12	08	0.4	2	89	15	0.0
	1200			30	1007	SSW	11	07	0.5	3	73	09	0.0
	1800			28	1006	SW	12	08	0.4	2	85	13	0.0

21 Apr 2026

22 Apr 2026

23 Apr 2026

24 Apr 2026



Significant wave height (m)



## MARINE WEATHER FORECAST (17 to 24 April 2026) ABEAM TO ELEPHANT POINT (21° 11' N, 091° 52' E)



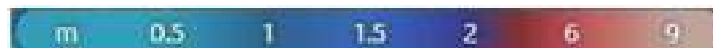
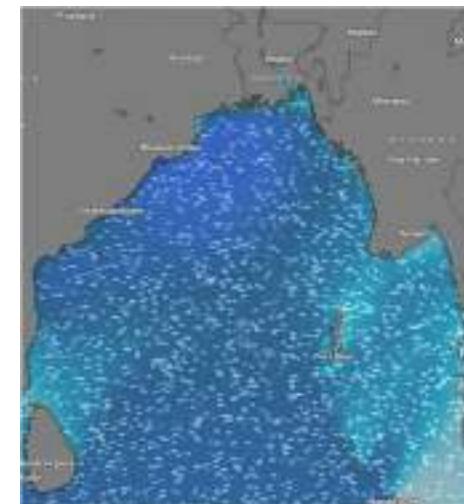
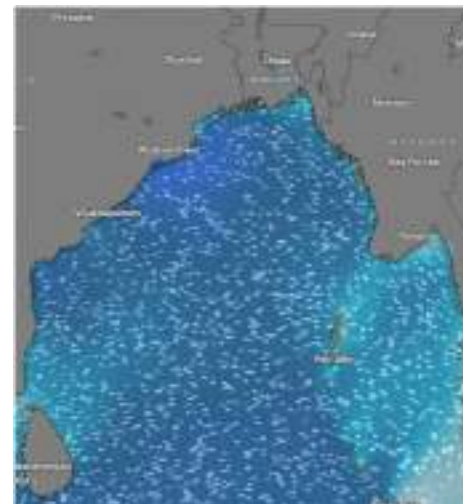
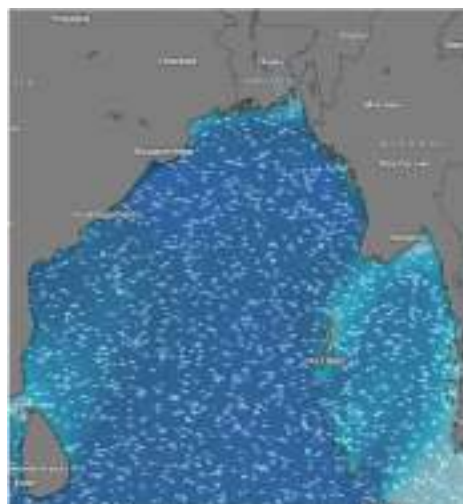
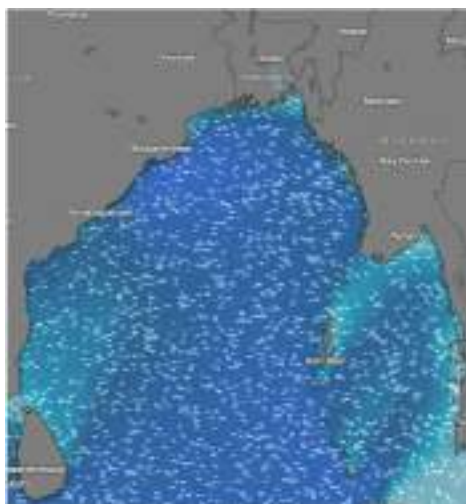
Date	Time	Air Temp (°C)		Sea Surface Temp (°C)	Baro Pressure (mbar)	Wind Direction	Wind Spd (kts)		Wave Ht (m)	Sea State	Humidity (%)	Prob of Rain (%)	Amount of Rain (mm)
		Max	Min				Gusting	Avg					
17-04-26 (Friday)	0001	32	26	28	1010	SW	14	10	1.0	3	87	15	0.0
	0600			27	1011	SSW	09	05	1.0	3	89	14	0.0
	1200			30	1009	SW	11	07	1.0	3	74	09	0.0
	1800			29	1008	SW	12	08	1.0	3	85	10	0.0
18-04-26 (Saturday)	0001	32	26	28	1009	NW	10	06	1.0	3	88	15	0.0
	0600			27	1010	SSW	07	04	1.0	3	90	14	0.0
	1200			30	1008	SW	11	07	1.0	3	75	09	0.0
	1800			29	1007	SW	14	10	1.0	3	87	10	0.0
19-04-26 (Sunday)	0001	32	26	28	1009	W	13	09	1.0	3	89	09	0.0
	0600			27	1010	SW	11	07	0.9	3	91	15	0.0
	1200			30	1008	SW	14	10	0.9	3	74	10	0.0
	1800			29	1007	SW	15	11	0.9	3	86	16	0.0
20-04-26 (Monday)	0001	32	26	28	1008	SW	11	07	1.0	3	87	09	0.0
	0600			27	1009	SSW	11	07	1.0	3	90	12	0.0
	1200			30	1008	SSW	16	12	1.1	3	75	07	0.0
	1800			29	1007	SW	16	12	1.1	3	84	13	0.0

17 Apr 2026

18 Apr 2026

19 Apr 2026

20 Apr 2026



Significant wave height (m)



## MARINE WEATHER FORECAST (17 to 24 April 2026) ABEAM TO ELEPHANT POINT (21° 11' N, 091° 52' E)



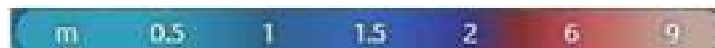
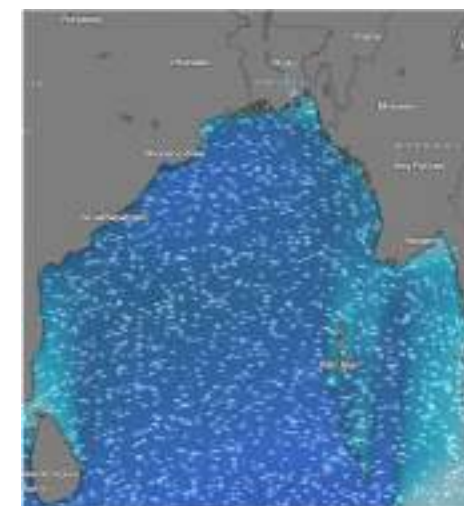
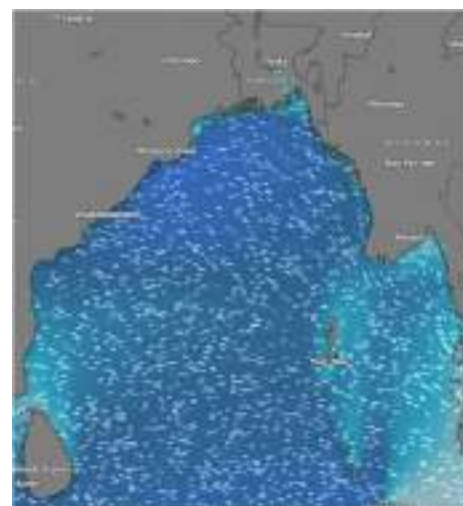
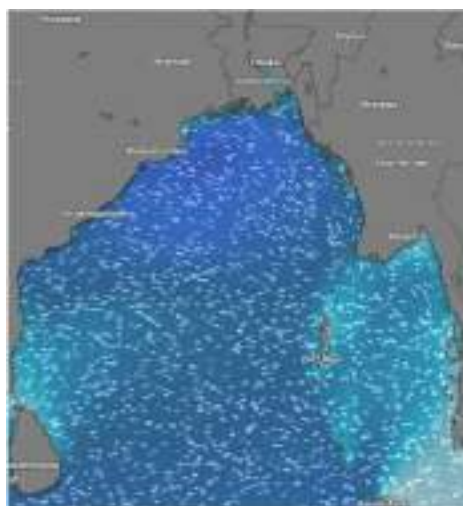
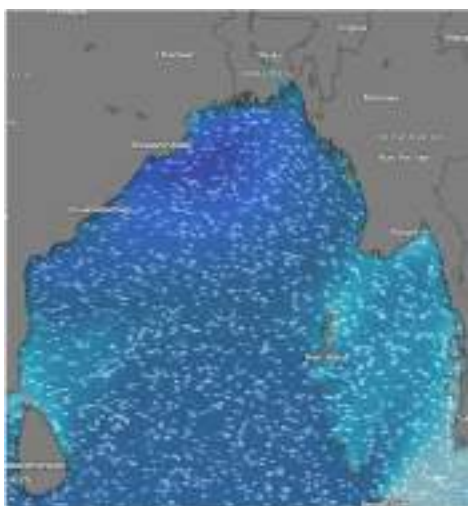
Date	Time	Air Temp (°C)		Sea Surface Temp (°C)	Baro Pressure (mbar)	Win Direction	Wind Spd (kts)		Wave Ht (m)	Sea State	Humidity (%)	Prob of Rain (%)	Amount of Rain (mm)
		Max	Min				Gusting	Avg					
21-04-26 (Tuesday)	0001	32	26	28	1008	SE	13	05	1.1	3	91	10	0.0
	0600			27	1009	SE	13	10	1.1	3	92	11	0.0
	1200			30	1007	SW	15	12	1.2	3	76	12	0.0
	1800			29	1006	SW	17	12	1.2	3	83	10	0.0
22-04-26 (Wednesday)	0001	32	26	28	1007	ESE	13	05	1.2	3	91	10	0.0
	0600			27	1008	SE	13	10	1.1	3	92	11	0.0
	1200			30	1007	SW	15	12	1.1	3	76	12	0.0
	1800			29	1006	SW	17	12	1.1	3	83	10	0.0
23-04-26 (Thursday)	0001	32	26	28	1007	ESE	16	10	1.0	3	90	06	0.0
	0600			27	1008	SE	13	09	1.0	3	91	07	0.0
	1200			30	1007	SW	13	10	1.0	3	73	12	0.0
	1800			29	1006	SW	15	12	1.0	3	81	10	0.0
24-04-26 (Friday)	0001	32	26	28	1007	SW	10	06	0.9	3	87	09	0.0
	0600			27	1008	SSW	09	05	0.9	3	89	13	0.0
	1200			30	1007	SSW	10	06	1.0	3	72	06	0.0
	1800			28	1006	SW	12	08	0.9	3	85	15	0.0

21 Apr 2026

22 Apr 2026

23 Apr 2026

24 Apr 2026



Significant wave height (m)



## MARINE WEATHER FORECAST (17 to 24 April 2026) ABEAM TO ST. MARTIN'S LIGHT HOUSE (20° 37'N, 092° 08' E)



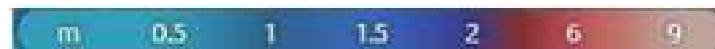
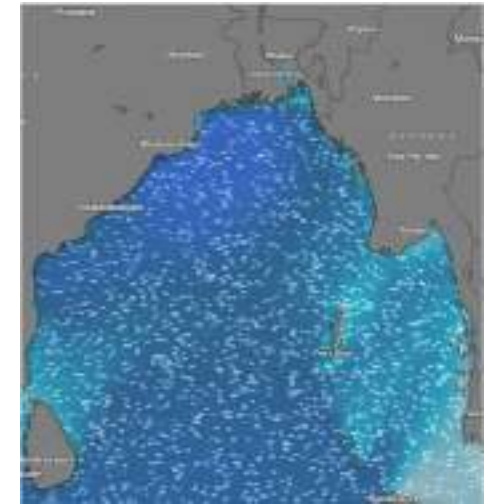
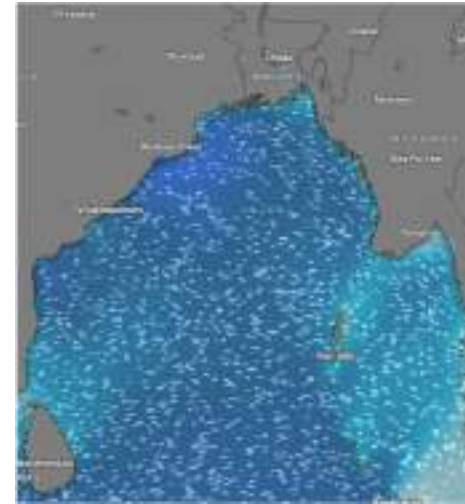
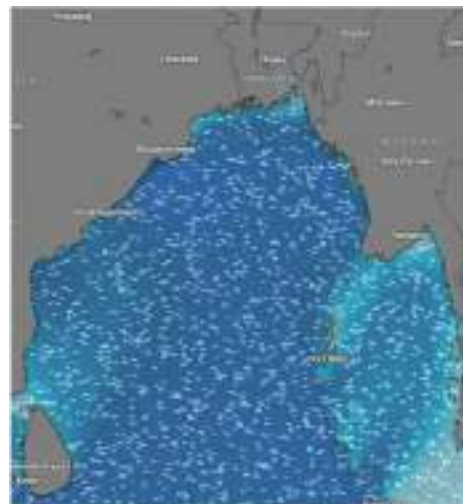
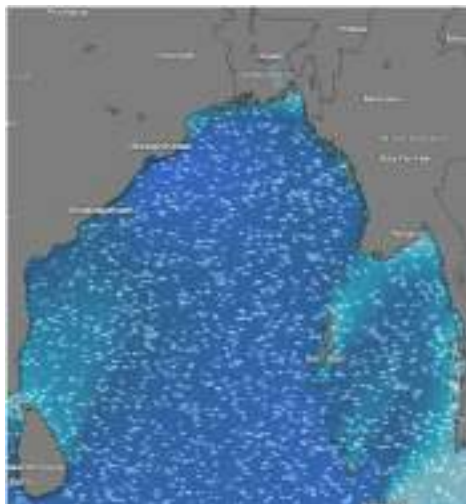
Date	Time	AirTemp (°C)		Sea Surface Temp (°C)	Baro Pressure (mbar)	Wind Direction	Wind Spd (kts)		Wave Ht (m)	Sea State	Humidity (%)	Prob of Rain (%)	Amount of Rain (mm)
		Max	Min				Gusting	Avg					
17-04-26 (Friday)	0001	33	26	28	1010	W	13	09	1.1	3	87	13	0.0
	0600			27	1011	W	05	04	1.0	3	89	18	0.0
	1200			30	1009	SW	12	08	1.0	3	72	10	0.0
	1800			29	1008	W	13	09	1.0	3	84	19	0.0
18-04-26 (Saturday)	0001	33	26	28	1009	W	12	08	1.0	3	88	10	0.0
	0600			27	1010	NW	09	05	1.0	3	90	15	0.0
	1200			30	1008	W	12	08	1.0	3	75	09	0.0
	1800			29	1007	W	15	11	1.0	3	83	17	0.0
19-04-26 (Sunday)	0001	33	26	28	1009	SW	13	09	1.0	3	89	10	0.0
	0600			27	1010	SW	07	04	1.0	3	90	15	0.0
	1200			30	1008	W	12	08	0.9	3	73	09	0.0
	1800			29	1007	W	15	11	1.0	3	85	17	0.0
20-04-26 (Monday)	0001	33	27	28	1008	W	11	07	1.0	3	89	10	0.0
	0600			27	1009	SW	09	05	1.0	3	90	15	0.0
	1200			30	1008	SSW	14	10	1.0	3	74	09	0.0
	1800			29	1007	SW	15	11	1.1	3	85	14	0.0

17 Apr 2026

18 Apr 2026

19 Apr 2026

20 Apr 2026



Significant wave height (m)



## MARINE WEATHER FORECAST (17 to 24 April 2026)

### ABEAM TO ST. MARTIN'S LIGHT HOUSE (20° 37' N, 092° 08' E)



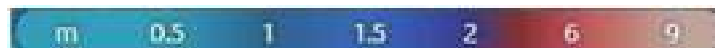
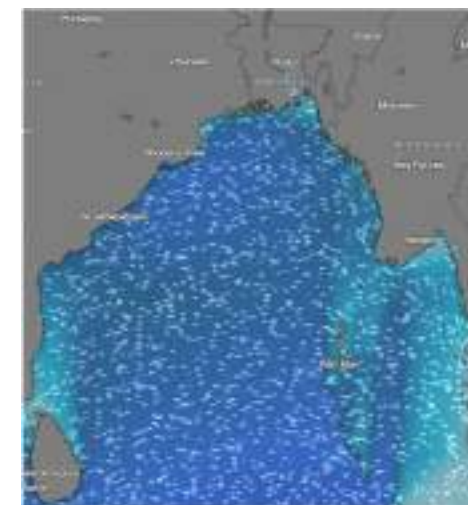
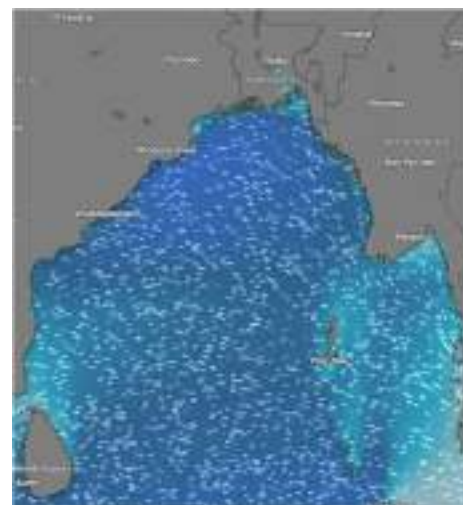
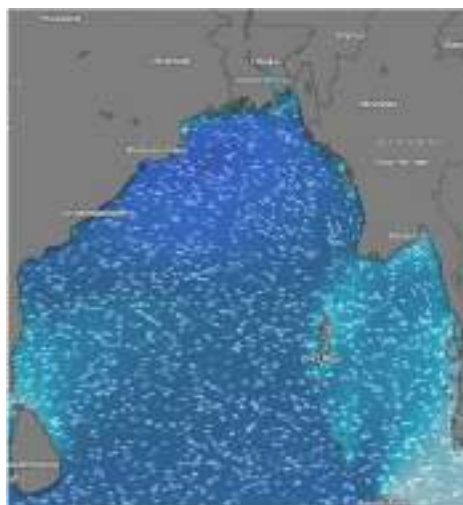
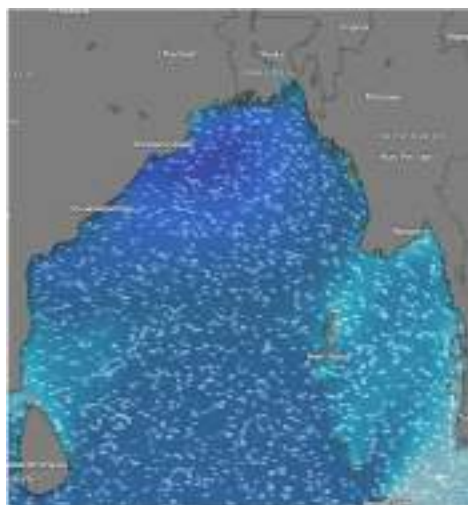
Date	Time	Air Temp (°C)		Sea Surface Temp (°C)	Baro Pressure (mbar)	Wind Direction	Wind Spd (kts)		Wave Ht (m)	Sea State	Humidity (%)	Prob of Rain (%)	Amount of Rain (mm)
		Max	Min				Gusting	Avg					
21-04-26 (Tuesday)	0001	32	27	28	1008	NNE	09	05	1.1	3	87	10	0.0
	0600			27	1009	ENE	10	07	1.1	3	89	12	0.0
	1200			30	1007	WSW	13	09	1.1	3	74	13	0.0
	1800			29	1006	W	15	11	1.2	3	83	14	0.0
22-04-26 (Wednesday)	0001	33	27	28	1007	NNE	09	05	1.2	3	85	10	0.0
	0600			27	1008	ENE	10	07	1.1	3	90	12	0.0
	1200			30	1007	WSW	13	09	1.1	3	72	13	0.0
	1800			29	1006	W	15	11	1.1	3	85	14	0.0
23-04-26 (Thursday)	0001	33	26	28	1007	NNE	13	10	1.0	3	88	06	0.0
	0600			27	1008	ENE	15	12	1.0	3	89	07	0.0
	1200			30	1007	WSW	12	08	1.0	3	73	08	0.0
	1800			29	1006	W	13	09	1.0	3	85	09	0.0
24-04-26 (Friday)	0001	33	27	28	1007	W	10	06	0.9	3	87	10	0.0
	0600			27	1008	SSW	05	03	0.9	3	89	15	0.0
	1200			30	1007	SW	11	07	1.0	3	74	08	0.0
	1800			28	1006	W	13	09	1.0	3	85	12	0.0

21 Apr 2026

22 Apr 2026

23 Apr 2026

24 Apr 2026



Significant wave height (m)



# MARINE WEATHER FORECAST (17 to 24 April 2026)



## PAYRA FAIRWAY (21° 22' N, 090° 6' E)

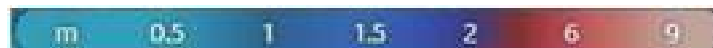
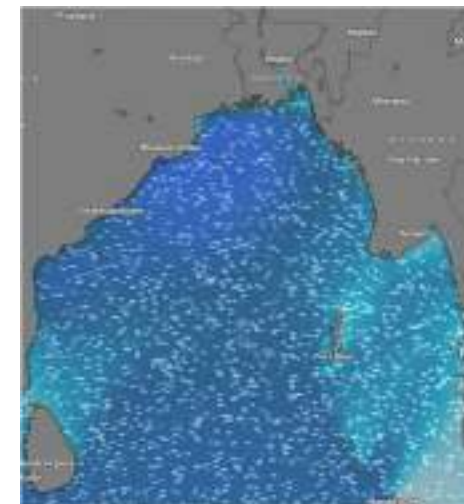
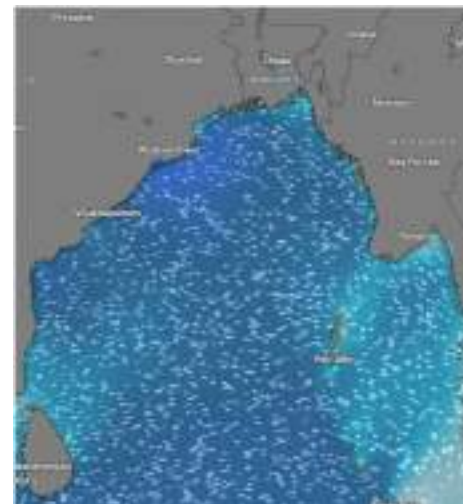
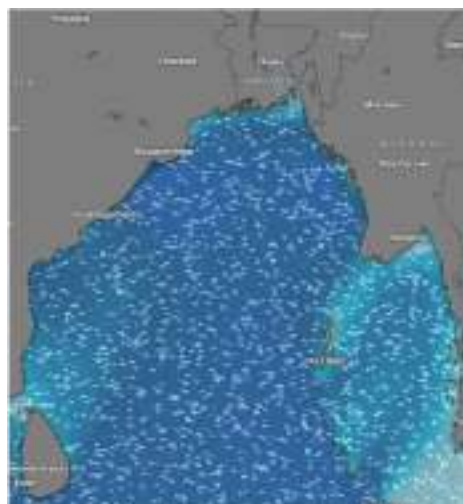
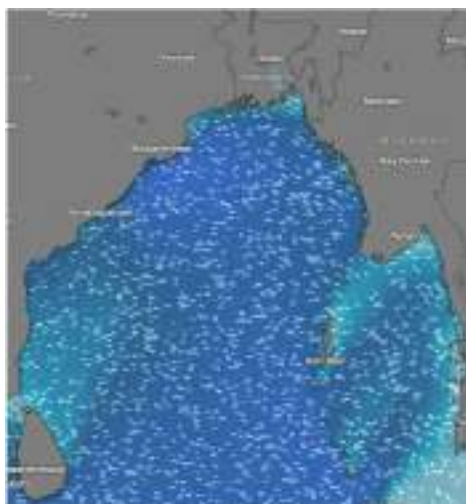
Date	Time	Air Temp (°C)		Sea Surface Temp (°C)	Baro Pressure (mbar)	Wind Direction	Wind Spd (kts)		Wave Ht (m)	Sea State	Humidity (%)	Prob of Rain (%)	Amount of Rain (mm)
		Max	Min				Gusting	Avg					
17-04-26 (Friday)	0001	33	27	28	1010	SSW	11	07	1.2	3	89	13	0.0
	0600			27	1011	SSW	13	09	1.2	3	90	10	0.0
	1200			30	1009	SSW	12	08	1.1	3	72	11	0.0
	1800			29	1008	SW	14	10	1.1	3	85	12	0.0
18-04-26 (Saturday)	0001	32	27	28	1009	SW	12	08	1.0	3	87	10	0.0
	0600			27	1010	SW	10	06	1.1	3	89	09	0.0
	1200			30	1008	SSW	12	08	1.0	3	73	08	0.0
	1800			29	1007	SW	16	12	1.1	3	86	06	0.0
19-04-26 (Sunday)	0001	32	26	28	1009	SSW	14	10	1.1	3	87	07	0.0
	0600			27	1010	SW	14	10	1.0	3	89	08	0.0
	1200			30	1008	SSW	16	12	1.1	3	72	10	0.0
	1800			29	1007	SSW	20	15	1.2	3	85	10	0.0
20-04-26 (Monday)	0001	33	27	28	1008	SSW	17	13	1.3	4	87	10	0.0
	0600			27	1009	SSW	15	11	1.3	4	89	15	0.0
	1200			30	1008	SSW	20	15	1.4	4	72	09	0.0
	1800			29	1007	SW	21	17	1.5	4	84	13	0.0

17 Apr 2026

18 Apr 2026

19 Apr 2026

20 Apr 2026



Significant wave height (m)



# MARINE WEATHER FORECAST (17 to 24 April 2026)



## PAYRA FAIRWAY (21° 22' N, 090° 6' E)

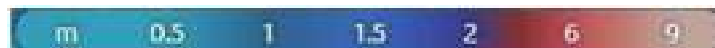
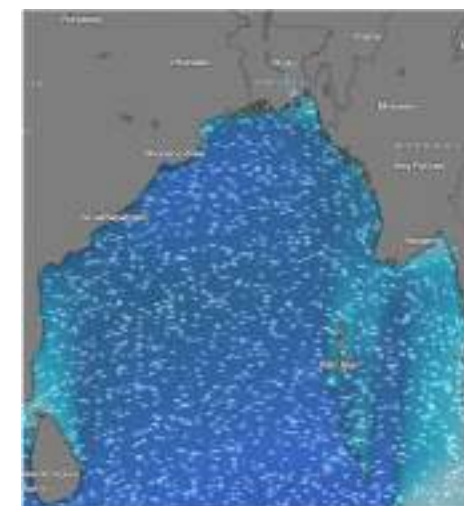
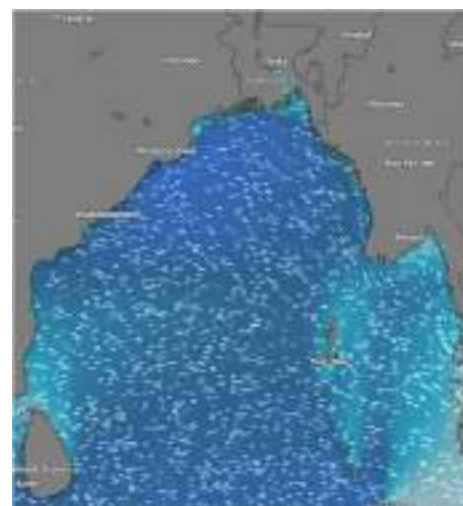
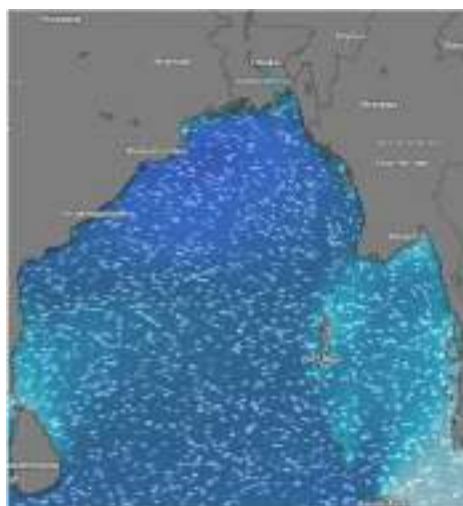
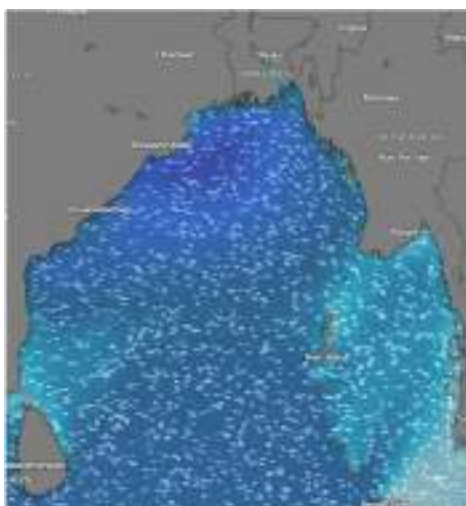
Date	Time	Air Temp (°C)		Sea Surface Temp (°C)	Baro Pressure (mbar)	Wind Direction	Wind Spd (kts)		Wae Ht (m)	Sea State	Humidity (%)	Prob of Rain (%)	Amount of Rain (mm)
		Max	Min				Gusting	Avg					
21-04-26 (Tuesday)	0001	32	27	28	1008	SW	17	09	1.5	4	90	09	0.0
	0600			27	1009	SW	18	12	1.5	4	91	08	0.0
	1200			30	1007	WSW	19	15	1.5	4	76	10	0.0
	1800			29	1006	SSW	21	16	1.6	4	82	11	0.0
22-04-26 (Wednesday)	0001	33	27	28	1007	SW	17	09	1.5	4	90	09	0.0
	0600			27	1008	SW	18	12	1.4	4	91	08	0.0
	1200			30	1007	WSW	19	15	1.4	4	76	10	0.0
	1800			29	1006	SSW	21	16	1.3	4	82	11	0.0
23-04-26 (Thursday)	0001	33	27	28	1007	SSW	18	12	1.3	4	91	08	0.0
	0600			27	1008	SSW	18	14	1.3	4	90	07	0.0
	1200			30	1007	SW	16	13	1.2	3	76	10	0.0
	1800			29	1006	WSW	18	14	1.2	3	81	12	0.0
24-04-26 (Friday)	0001	33	27	28	1007	SSW	16	12	1.2	3	87	12	0.0
	0600			27	1008	SSW	12	08	1.2	3	90	15	0.0
	1200			30	1007	SSW	15	11	1.2	3	72	09	0.0
	1800			28	1006	SW	15	11	1.2	3	85	14	0.0

21 Apr 2026

22 Apr 2026

23 Apr 2026

24 Apr 2026



Significant wave height (m)



# MARINE WEATHER FORECAST (17 to 24 April 2026)

## MONGLA FAIRWAY (21° 26' N, 089° 34' E)



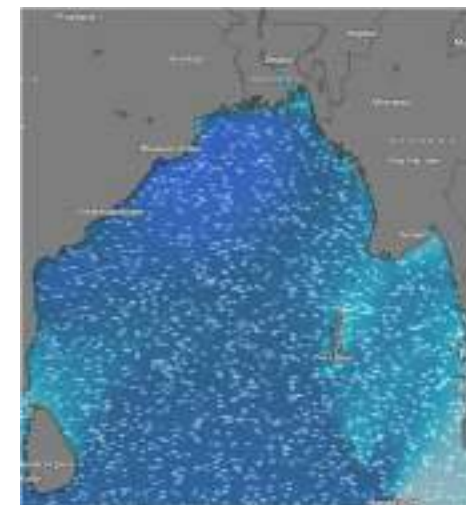
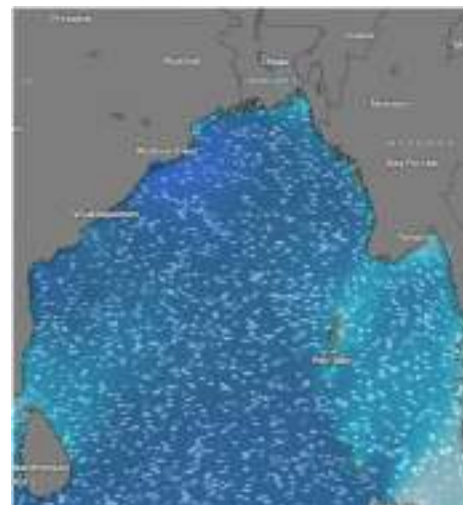
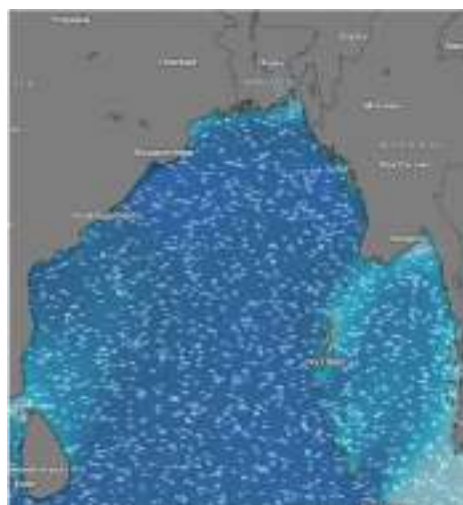
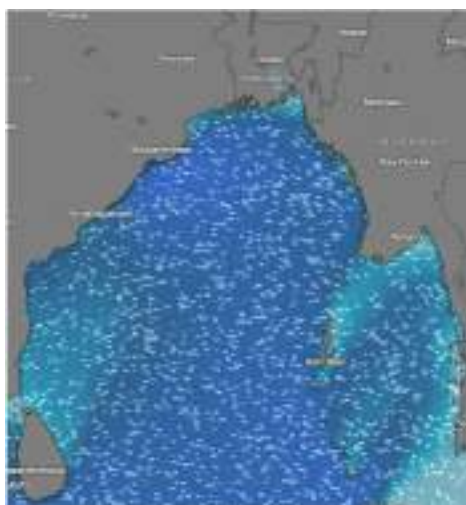
Date	Time	Air Temp (°C)		Sea Surface Temp (°C)	Baro Pressure (mbar)	Wind Direction	Wind Spd (kts)		Wave Ht (m)	Sea State	Humidity (%)	Prob of Rain (%)	Amount of Rain (mm)
		Max	Min				Gusting	Avg					
17-04-26 (Friday)	0001	32	26	28	1010	SSW	13	09	1.3	4	88	11	0.0
	0600			27	1011	S	12	08	1.2	3	89	13	0.0
	1200			30	1009	SSW	12	08	1.2	3	72	10	0.0
	1800			29	1008	SW	14	10	1.2	3	83	10	0.0
18-04-26 (Saturday)	0001	32	26	28	1009	SW	13	09	1.1	3	89	07	0.0
	0600			27	1010	SW	12	08	1.1	3	90	09	0.0
	1200			30	1008	SW	13	09	1.1	3	56	08	0.0
	1800			29	1007	SW	16	12	1.1	3	65	05	0.0
19-04-26 (Sunday)	0001	32	27	28	1009	SSW	16	12	1.1	3	90	06	0.0
	0600			27	1010	SSW	14	10	1.2	3	91	04	0.0
	1200			30	1008	SSW	19	14	1.2	3	64	05	0.0
	1800			29	1007	SW	20	15	1.3	4	72	06	0.0
20-04-26 (Monday)	0001	32	26	28	1008	SSW	22	16	1.4	4	89	10	0.0
	0600			27	1009	SSW	19	14	1.5	4	90	12	0.0
	1200			30	1008	SSW	23	16	1.4	4	75	09	0.0
	1800			29	1007	SW	24	17	1.5	4	86	15	0.0

17 Apr 2026

18 Apr 2026

19 Apr 2026

20 Apr 2026



Significant wave height (m)



# MARINE WEATHER FORECAST (17 to 24 April 2026)

## MONGLA FAIRWAY (21° 26' N, 089° 34' E)



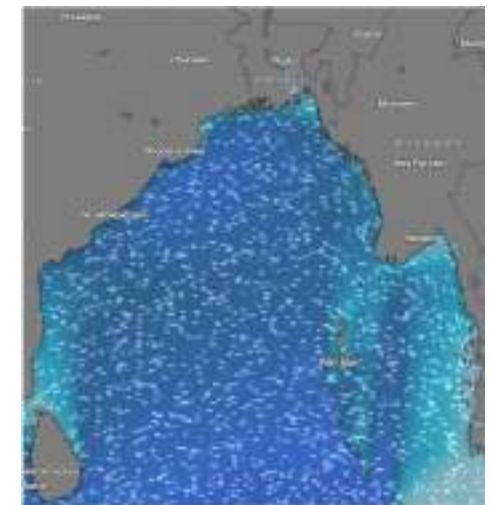
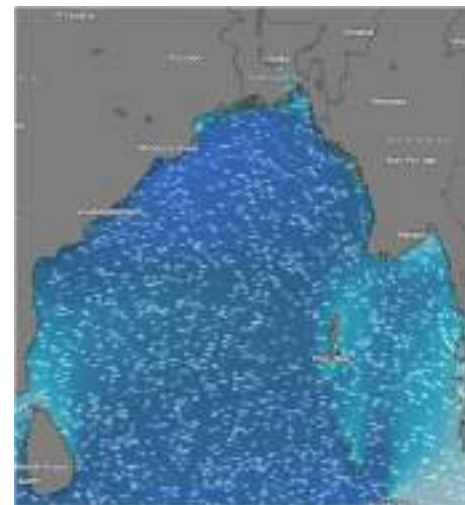
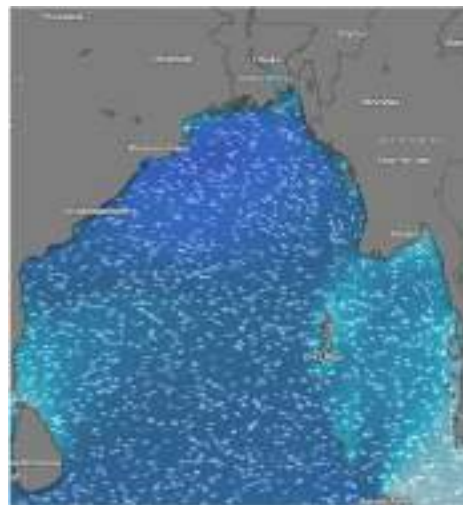
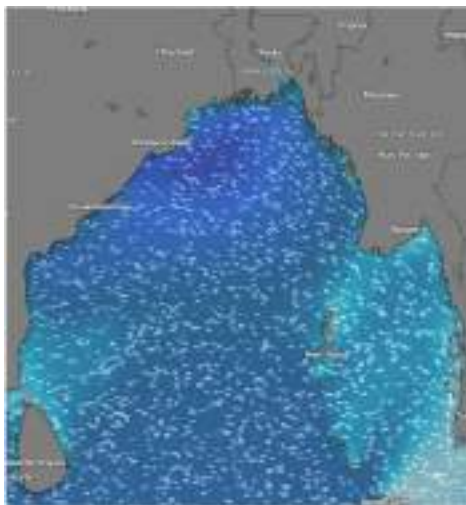
Date	Time	Air Temp (°C)		Sea Surface Temp (°C)	Baro Pressure (mbar)	Wind Direction	Wind Spd (kts)		Wave Ht (m)	Sea State	Humidity (%)	Prob of Rain (%)	Amount of Rain (mm)
		Max	Min				Gusting	Avg					
21-04-26 (Tuesday)	0001	33	26	28	1008	SSW	17	13	1.6	4	87	08	0.0
	0600			27	1009	SW	21	14	1.6	4	90	07	0.0
	1200			30	1007	SSW	22	16	1.5	4	72	10	0.0
	1800			29	1006	SSW	23	17	1.6	4	83	10	0.0
22-04-26 (Wednesday)	0001	33	26	28	1007	SSW	20	15	1.5	4	88	08	0.0
	0600			27	1008	SW	17	13	1.5	4	89	07	0.0
	1200			30	1007	SSW	18	13	1.4	4	75	10	0.0
	1800			29	1006	SSW	21	15	1.4	4	86	10	0.0
23-04-26 (Thursday)	0001	33	26	28	1007	SSW	22	16	1.4	4	89	10	0.0
	0600			27	1008	SW	16	12	1.3	4	90	11	0.0
	1200			30	1007	SSW	16	12	1.3	4	74	12	0.0
	1800			29	1006	SSW	17	13	1.3	4	85	10	0.0
24-04-26 (Friday)	0001	33	26	28	1007	SSW	19	14	1.3	4	88	13	0.0
	0600			27	1008	SSW	13	09	1.2	3	90	15	0.0
	1200			30	1007	SSW	15	11	1.2	3	73	11	0.0
	1800			28	1006	SSW	16	12	1.3	4	84	17	0.0

21 Apr 2026

22 Apr 2026

23 Apr 2026

24 Apr 2026



Significant wave height (m)



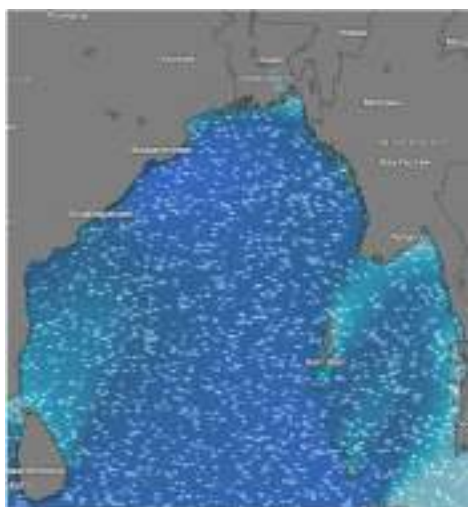
## MARINE WEATHER FORECAST (17 to 24 April 2026)

### OUTER EEZ (18° 48' N, 090° 30' E)



Date	Time	Air Temp (°C)		Sea Surface Temp (°C)	Baro Pressure (mbar)	Wind Direction	Wind Spd (kts)		Wave Ht (m)	Sea State	Humidity (%)	Prob of Rain (%)	Amount of Rain (mm)
		Max	Min				Gusting	Avg					
17-04-26 (Friday)	0001	32	26	28	1011	SSW	13	09	1.2	3	87	08	0.0
	0600			27	1012	SSW	10	06	1.2	3	89	09	0.0
	1200			30	1010	SW	11	07	1.2	3	66	07	0.0
	1800			29	1009	SSW	13	09	1.2	3	73	06	0.0
18-04-26 (Saturday)	0001	32	26	28	1010	SW	13	09	1.2	3	89	09	0.0
	0600			27	1011	SW	09	05	1.2	3	90	15	0.0
	1200			30	1009	SW	11	07	1.1	3	73	08	0.0
	1800			29	1008	SW	16	12	1.2	3	85	14	0.0
19-04-26 (Sunday)	0001	32	26	28	1010	SW	15	11	1.2	3	88	09	0.0
	0600			27	1011	SW	13	09	1.1	3	90	15	0.0
	1200			30	1009	W	15	11	1.1	3	75	08	0.0
	1800			29	1008	W	17	13	1.2	3	86	14	0.0
20-04-26 (Monday)	0001	32	25	28	1009	W	18	14	1.3	4	87	10	0.0
	0600			27	1010	SSW	16	12	1.2	3	90	17	0.0
	1200			30	1009	SW	19	14	1.3	4	74	15	0.0
	1800			29	1008	SW	20	15	1.4	4	85	19	0.0

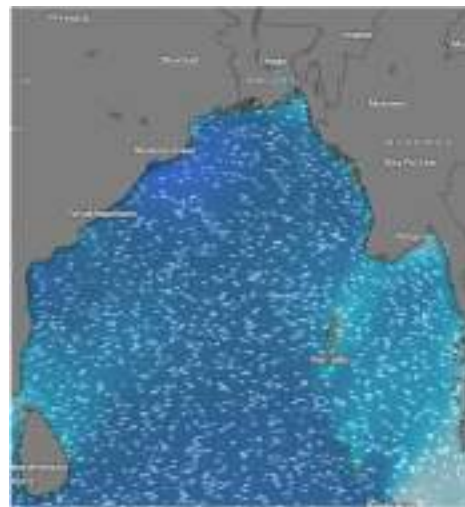
17 Apr 2026



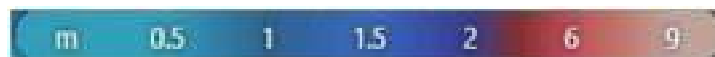
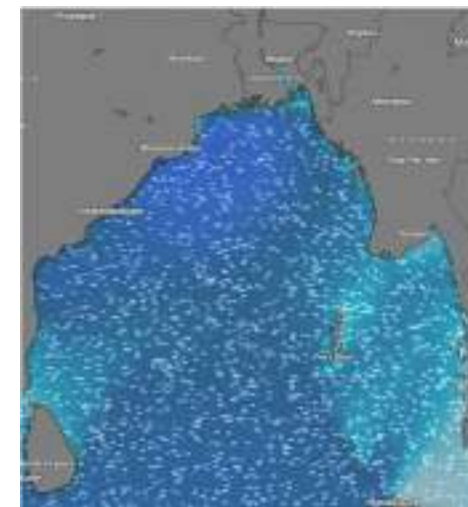
18 Apr 2026



19 Apr 2026



20 Apr 2026



Significant wave height (m)



# MARINE WEATHER FORECAST (17 to 24 April 2026)

## OUTER EEZ (18° 48' N, 090° 30' E)



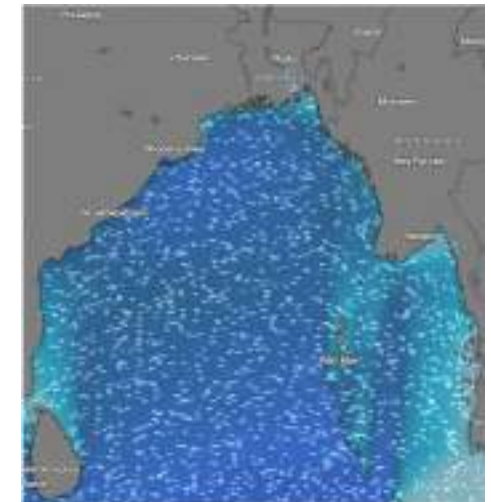
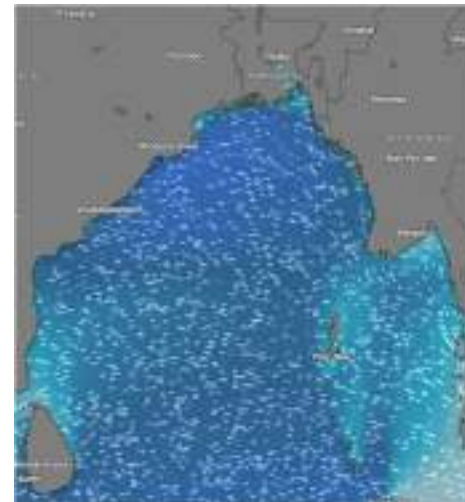
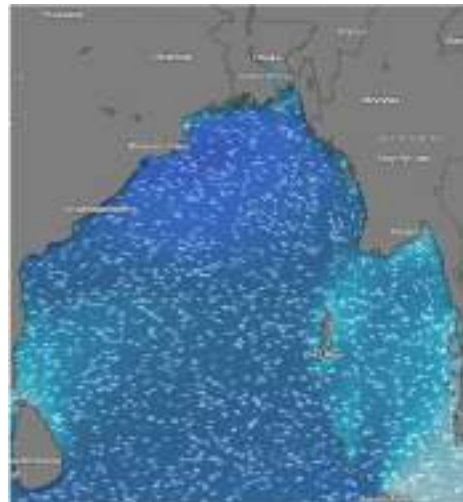
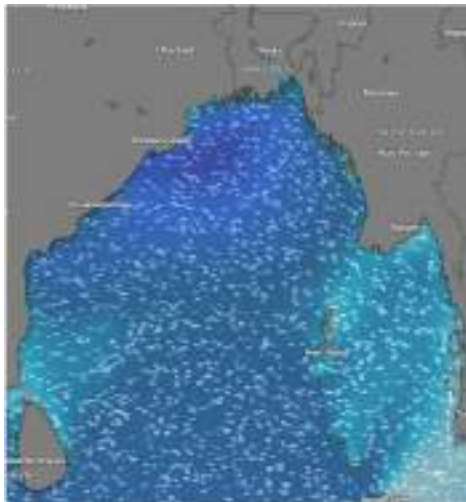
Date	Time	Air Temp (°C)		Sea Surface Temp (°C)	Baro Pressure (mbar)	Wind Direction	Wind Spd (kts)		Wave Ht (m)	Sea State	Humidity (%)	Prob of Rain (%)	Amount of Rain (mm)
		Max	Min				Gusting	Avg					
21-04-26 (Tuesday)	0001	31	26	28	1009	NNE	15	12	1.5	4	87	11	0.0
	0600			27	1010	SW	15	12	1.5	4	90	15	0.0
	1200			30	1009	WSW	18	14	1.5	4	73	09	0.0
	1800			29	1008	W	20	13	1.5	4	85	16	0.0
22-04-26 (Wednesday)	0001	31	26	28	1009	NNE	15	12	1.4	4	88	10	0.0
	0600			27	1010	SW	15	12	1.5	4	89	12	0.0
	1200			30	1009	WSW	18	14	1.4	4	72	13	0.0
	1800			29	1008	W	20	13	1.4	4	85	14	0.0
23-04-26 (Thursday)	0001	31	26	28	1008	SW	15	12	1.3	4	86	10	0.0
	0600			27	1009	SW	15	12	1.2	3	89	12	0.0
	1200			30	1008	WSW	18	14	1.3	4	73	13	0.0
	1800			29	1007	W	20	13	1.3	4	85	14	0.0
24-04-26 (Friday)	0001	31	26	28	1008	W	16	12	1.2	3	89	12	0.0
	0600			27	1009	SW	12	08	1.2	3	90	16	0.0
	1200			30	1008	SW	13	09	1.2	3	74	10	0.0
	1800			28	1007	SW	14	10	1.3	4	85	17	0.0

21 Apr 2026

22 Apr 2026

23 Apr 2026

24 Apr 2026



Significant wave height (m)



## PREDICTED SURFACE PRESSURE FORECAST (17 to 23 Apr 2026)



17 Apr 2026



18 Apr 2026



19 Apr 2026



20 Apr 2026



21 Apr 2026



22 Apr 2026



23 Apr 2026

