



SUMMARY OF MARINE WEATHER FORECAST
COASTAL AREA OF BANGLADESH
DATE: 16-23 SEP 2024



Fleet forecast	The land Deep Depression lies over gangetic west Bengal and adjoining area. under its influence deep convection is taking place over North Bay. Monsoon is strong over North Bay.
Wind direction, speed	South/south-westerly 9 kts, (Temporary gusting up to 26 kts).
Wave height & sea state	Wave height: 0.1 to 2.4 m (Sea state:1 to 4).
Sea surface temperature	27°C - 29°C (May remain nearly unchanged).
Baro pressure	998- 1007 mb
Rainfall	Light to moderate rain/thunder showers over Bay of Bengal & adjoining area with moderately heavy falls at places over Rajshahi, Dhaka, Khulna & Barishal division.

Outlook for 16 to 23 Sep 2024: Rainfall activity is likely to decrease at the end of said period.

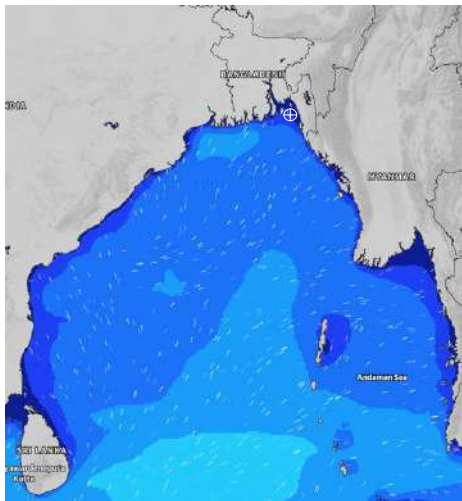


MARINE WEATHER FORECAST (16-23 Sep 2024) NEAR AUTHORITY BUOY (22° 12' N, 091° 38' E)

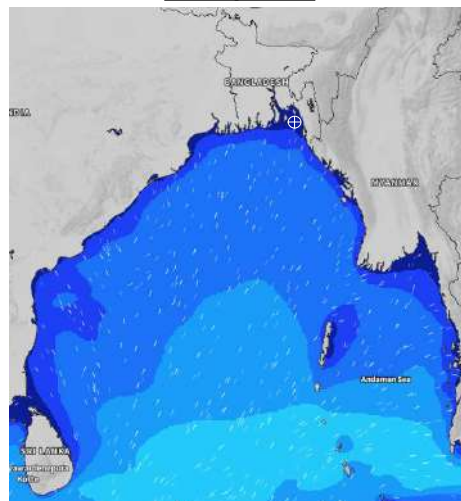


Date	Time	Air Temp (°C)		Sea Surface Temp (°C)	Baro Pressure (mbar)	Wind Direction	Wind Spd (kts)		Wave Ht (m)	Sea State	Humidity (%)	Prob of Rain
		Max	Min				Max	Avg				
16-09-24 (Monday)	0001	32	26	27	1003	SSE	24	17	0.4	2	92	32% (0.1 mm)
	0600			27	1004	SSE	24	15	0.4	2	94	24% (0.0 mm)
	1200			29	1005	S	16	14	0.3	2	74	24% (0.0 mm)
	1800			29	1004	S	14	12	0.3	2	84	14% (0.0 mm)
17-09-24 (Tuesday)	0001	32	27	27	1006	SSE	13	11	0.3	2	91	24% (0.0 mm)
	0600			27	1007	SE	9	7	0.2	2	94	12% (0.0 mm)
	1200			28	1006	SW	7	6	0.1	1	74	10% (0.0 mm)
	1800			29	1004	SW	6	5	0.1	1	83	15% (0.0 mm)
18-09-24 (Wednesday)	0001	32	27	28	1006	SE	5	4	0.1	1	91	13% (0.0 mm)
	0600			27	1006	ESE	5	4	0.1	1	94	24% (0.0 mm)
	1200			28	1005	W	6	5	0.1	1	74	44% (0.2 mm)
	1800			29	1003	WSW	7	6	0.1	1	82	21% (0.0 mm)
19-09-24 (Thursday)	0001	32	27	29	1005	SSW	7	6	0.1	1	91	82% (1.1 mm)
	0600			28	1005	SSE	4	3	0.1	1	93	53% (0.4 mm)
	1200			28	1005	WSW	7	6	0.1	1	78	49% (0.4 mm)
	1800			29	1003	SW	7	6	0.1	1	83	17% (0.0 mm)

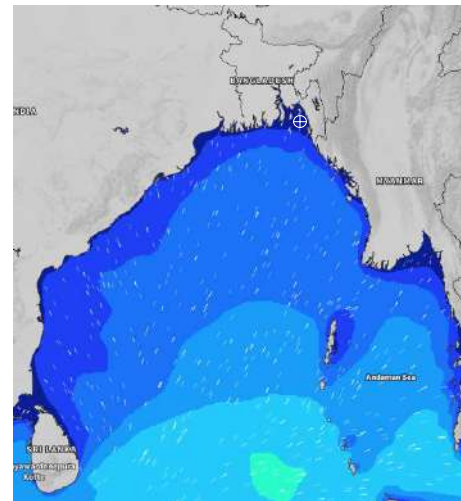
16 Sep 2024



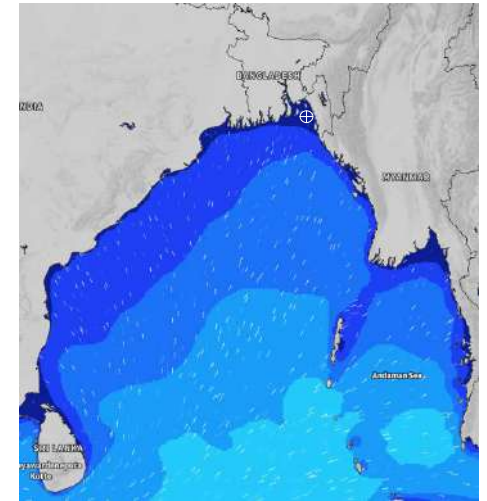
17 Sep 2024



18 Sep 2024



19 Sep 2024



Significant wave height (m)

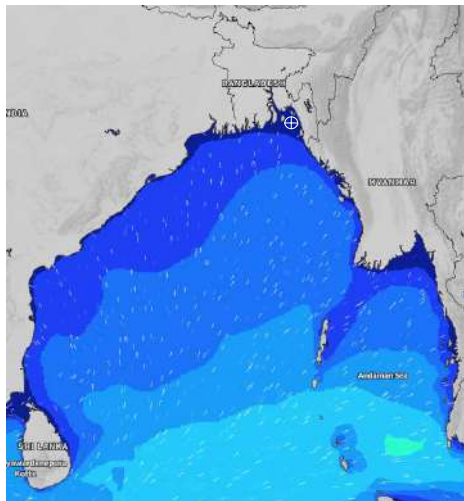


MARINE WEATHER FORECAST (16-23 Sep 2024) NEAR AUTHORITY BUOY (22° 12' N, 091° 38' E)

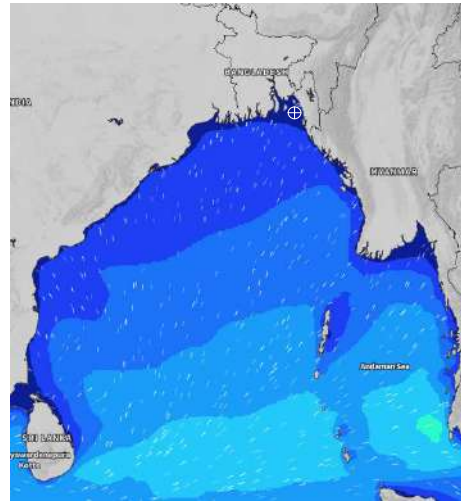


Date	Time	Air Temp (°C)		Sea Surface Temp (°C)	Baro Pressure (mbar)	Wind Direction	Wind Spd (kts)		Wave Ht (m)	Sea State	Humidity (%)	Prob of Rain
		Max	Min				Max	Avg				
20-09-24 (Friday)	0001	33	27	28	1004	SSE	5	4	0.1	1	91	56% (0.5 mm)
	0600			27	1004	SE	8	7	0.1	1	94	24% (0.0 mm)
	1200			28	1004	SW	8	7	0.1	1	76	24% (0.0 mm)
	1800			29	1002	WSW	4	3	0.1	1	81	15% (0.0 mm)
21-09-24 (Saturday)	0001	33	27	29	1005	SSE	8	6	0.1	1	91	50% (0.6 mm)
	0600			27	1004	SSE	8	7	0.1	1	93	36% (0.2 mm)
	1200			28	1004	SSW	7	6	0.1	1	78	54% (0.5 mm)
	1800			29	1001	SSW	7	6	0.1	1	82	43% (0.4 mm)
22-09-24 (Sunday)	0001	32	27	28	1005	SSE	5	4	0.1	1	91	65% (0.6 mm)
	0600			27	1004	SE	4	3	0.1	1	94	34% (0.2 mm)
	1200			28	1004	WSW	5	4	0.1	1	79	56% (0.5 mm)
	1800			29	1002	S	5	4	0.1	1	82	42% (0.4 mm)
23-09-24 (Monday)	0001	31	26	28	1001	SSE	18	17	0.2	2	91	68% (0.7 mm)
	0600			27	1001	SE	20	15	0.4	2	92	37% (0.2 mm)
	1200			28	1003	WSW	20	15	0.4	2	80	53% (0.5 mm)
	1800			29	1001	S	18	15	0.4	2	83	42% (0.4 mm)

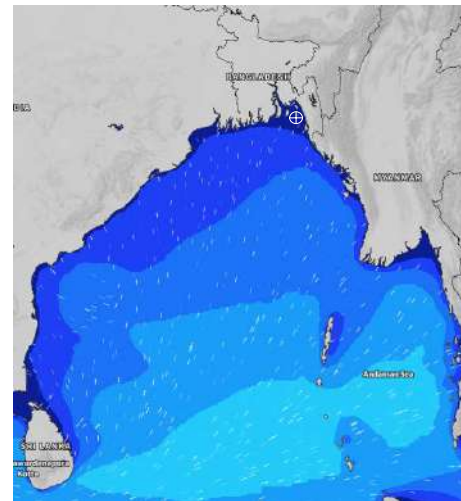
20 Sep 2024



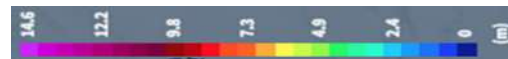
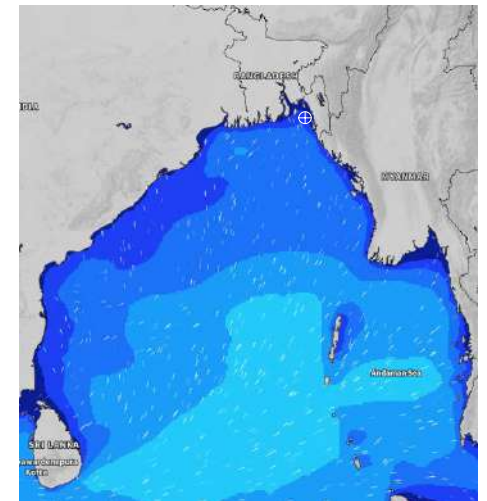
21 Sep 2024



22 Sep 2024



23 Sep 2024



Significant wave height (m)

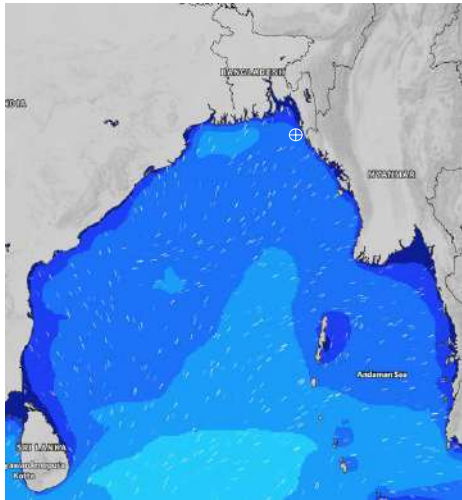


MARINE WEATHER FORECAST (16-23 Sep 2024) 20 NM WEST OF ELEPHANT POINT (21° 10' N, 091° 42' E)

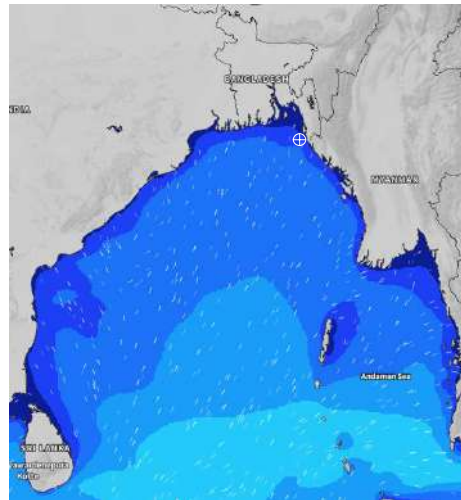


Date	Time	Air Temp (°C)		Sea Surface Temp (°C)	Baro Pressure (mbar)	Wind Direction	Wind Spd (kts)		Wave Ht (m)	Sea State	Humidity (%)	Prob of Rain
		Max	Min				Max	Avg				
16-09-24 (Monday)	0001	30	26	28	1003	SSE	21	20	1.7	4	92	60% (0.4 mm)
	0600			28	1004	SE	21	20	1.6	4	94	56% (0.4 mm)
	1200			29	1005	SSE	18	17	1.5	4	79	54% (0.0 mm)
	1800			29	1004	SSE	13	12	1.3	4	87	18% (0.0 mm)
17-09-24 (Tuesday)	0001	31	26	29	1006	SSE	12	11	1.2	3	91	12% (0.0 mm)
	0600			28	1006	SE	12	10	1.1	3	93	24% (0.0 mm)
	1200			28	1006	S	9	8	1.0	3	78	24% (0.0 mm)
	1800			29	1004	S	5	4	1.0	3	84	12% (0.0 mm)
18-09-24 (Wednesday)	0001	30	26	29	1006	SSE	6	5	1.0	3	90	21% (0.0 mm)
	0600			28	1006	SE	6	5	1.0	3	93	39% (0.3 mm)
	1200			29	1005	SSW	5	4	0.9	3	82	50% (0.4 mm)
	1800			29	1003	W	6	5	0.9	3	86	24% (0.0 mm)
19-09-24 (Thursday)	0001	31	27	29	1005	SW	5	4	0.9	3	90	24% (0.0 mm)
	0600			28	1005	SW	4	3	0.9	3	92	56% (0.7 mm)
	1200			29	1005	WSW	6	5	0.9	3	81	63% (0.6 mm)
	1800			29	1003	WNW	8	7	0.9	3	84	24% (0.0 mm)

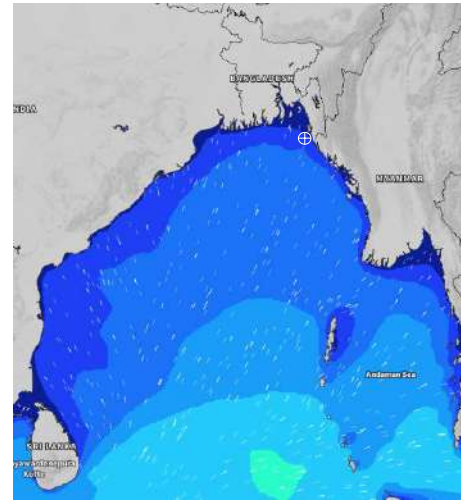
16 Sep 2024



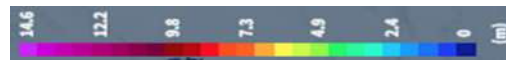
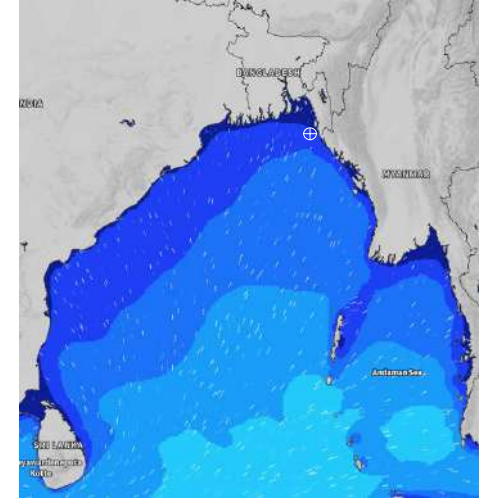
17 Sep 2024



18 Sep 2024



19 Sep 2024



Significant wave height (m)

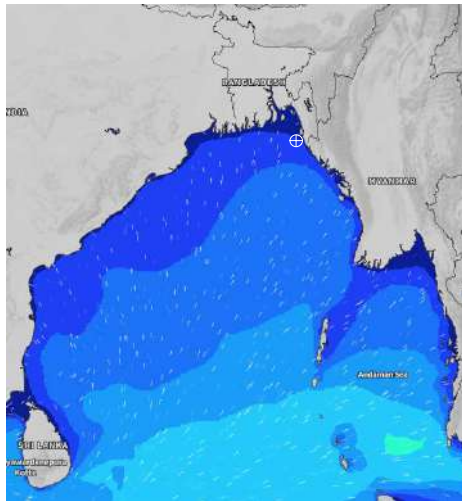


MARINE WEATHER FORECAST (16-23 Sep 2024) 20 NM WEST OF ELEPHANT POINT (21° 10' N, 091° 42' E)

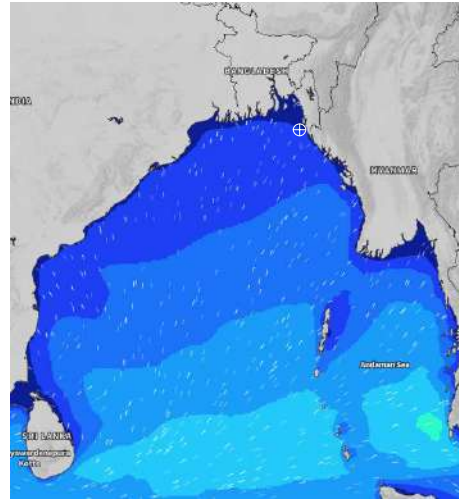


Date	Time	Air Temp (°C)		Sea Surface Temp (°C)	Baro Pressure (mbar)	Wind Direction	Wind Spd (kts)		Wave Ht (m)	Sea State	Humidity (%)	Prob of Rain
		Max	Min				Max	Avg				
20-09-24 (Friday)	0001	31	27	29	1004	SSE	4	3	0.9	3	90	46% (0.4 mm)
	0600			29	1004	SSE	5	4	0.8	3	93	45% (0.5 mm)
	1200			29	1004	SE	9	8	0.8	3	78	63% (0.6 mm)
	1800			29	1003	S	7	6	0.9	3	86	28% (0.1 mm)
21-09-24 (Saturday)	0001	31	27	29	1005	S	7	6	0.9	3	91	47% (0.5 mm)
	0600			27	1006	SSE	5	4	0.9	3	93	41% (0.5 mm)
	1200			26	1002	SE	7	6	0.8	3	79	65% (0.6 mm)
	1800			27	1004	SSW	9	8	0.8	3	85	23% (0.1 mm)
22-09-24 (Sunday)	0001	31	27	28	1005	W	9	8	0.8	3	90	45% (0.4 mm)
	0600			28	1004	SW	7	6	0.8	3	91	46% (0.5 mm)
	1200			29	1005	SW	7	6	0.8	3	80	68% (0.6 mm)
	1800			29	1002	WSW	10	9	0.8	3	85	26% (0.1 mm)
23-09-24 (Monday)	0001	30	26	28	1001	WNW	14	12	1.1	3	90	45% (0.4 mm)
	0600			28	1001	SSE	19	18	1.3	4	93	47% (0.5 mm)
	1200			29	1003	SSE	20	18	1.4	4	80	62% (0.6 mm)
	1800			29	1001	SE	16	14	1.3	4	85	30% (0.2 mm)

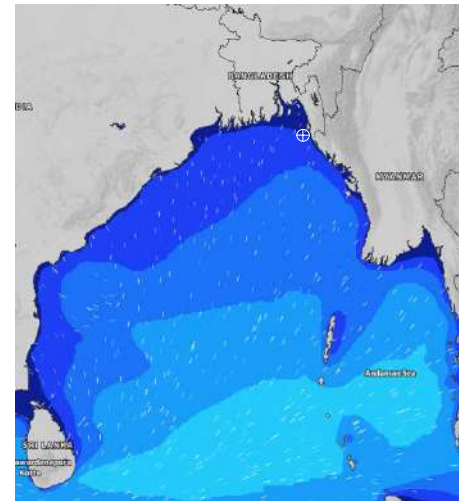
20 Sep 2024



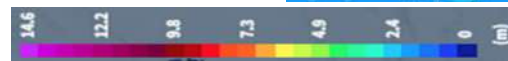
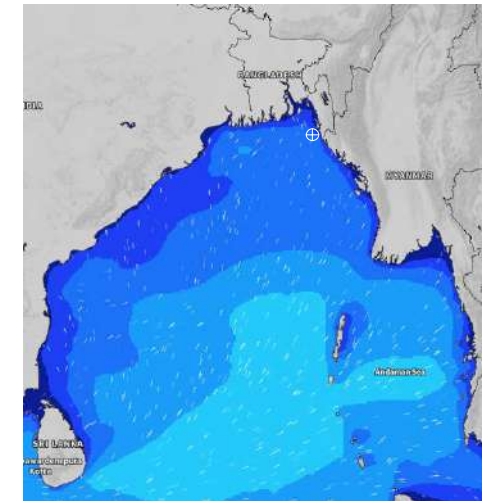
21 Sep 2024



22 Sep 2024



23 Sep 2024



Significant wave height (m)



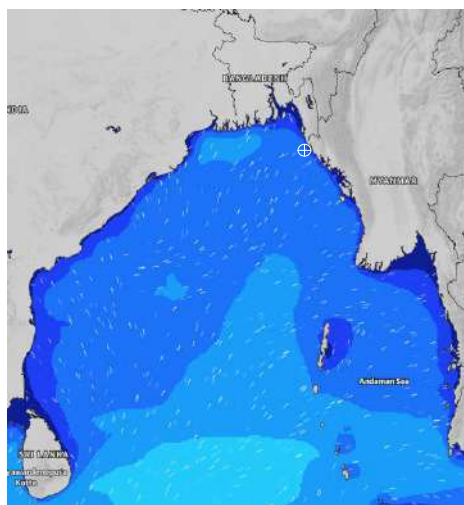
MARINE WEATHER FORECAST (16-23 Sep 2024)

15 NM WEST OF ST. MARTIN'S LIGHT HOUSE (20° 37' N, 092° 03' E)

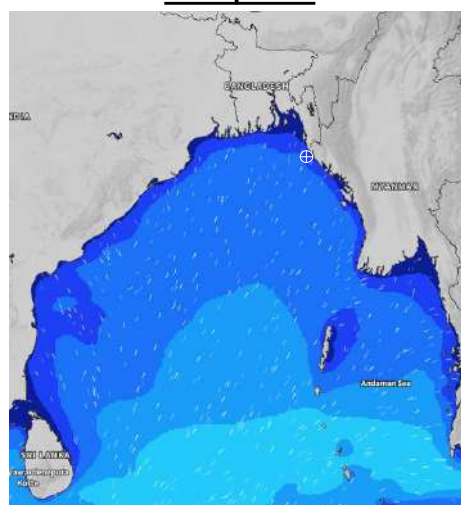


Date	Time	Air Temp (°C)		Sea Surface Temp (°C)	Baro Pressure (mbar)	Wind Direction	Wind Spd (kts)		Wave Ht (m)	Sea State	Humidity (%)	Prob of Rain
		Max	Min				Max	Avg				
16-09-24 (Monday)	0001	30	26	28	1004	SSE	15	13	1.8	4	93	45% (0.4 mm)
	0600			28	1003	SE	15	14	1.7	4	94	40% (0.3 mm)
	1200			28	1006	SSE	14	13	1.6	4	93	37% (0.2 mm)
	1800			29	1004	SSE	11	10	1.4	4	90	10% (0.0 mm)
17-09-24 (Tuesday)	0001	30	26	29	1006	SSE	11	10	1.4	4	92	48% (0.5 mm)
	0600			28	1006	SE	10	9	1.3	4	94	53% (0.5 mm)
	1200			28	1007	SE	9	8	1.2	3	84	66% (0.6 mm)
	1800			29	1004	S	8	7	1.2	3	87	27% (0.1 mm)
18-09-24 (Wednesday)	0001	30	26	29	1006	S	6	5	1.2	3	91	18% (0.0 mm)
	0600			28	1005	SSE	4	3	1.2	3	94	16% (0.0 mm)
	1200			28	1006	ESE	4	3	1.2	3	79	66% (0.6 mm)
	1800			29	1003	SSE	8	7	1.2	3	86	24% (0.0 mm)
19-09-24 (Thursday)	0001	30	27	29	1006	WSW	5	4	1.2	3	92	49% (0.5 mm)
	0600			28	1004	WSW	6	5	1.2	3	91	40% (0.4 mm)
	1200			29	1006	W	5	4	1.2	3	82	45% (0.3 mm)
	1800			29	1003	WNW	8	7	1.2	3	86	36% (0.2 mm)

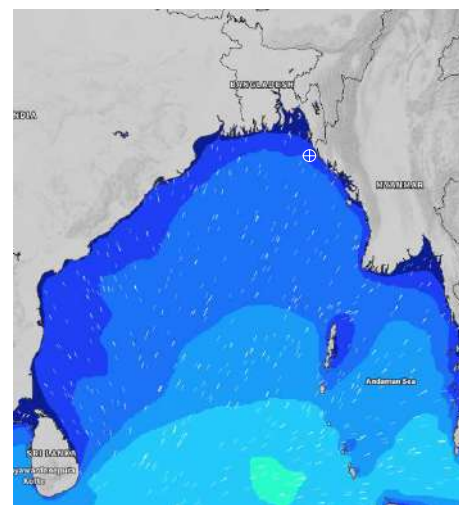
16 Sep 2024



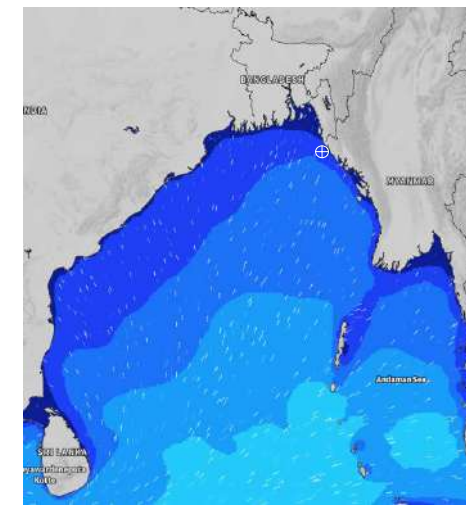
17 Sep 2024



18 Sep 2024



19 Sep 2024



Significant wave height (m)



MARINE WEATHER FORECAST (16-23 Sep 2024)

15 NM WEST OF ST. MARTIN'S LIGHT HOUSE (20° 37' N, 092° 03' E)



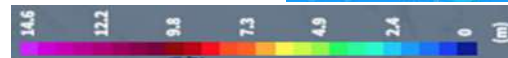
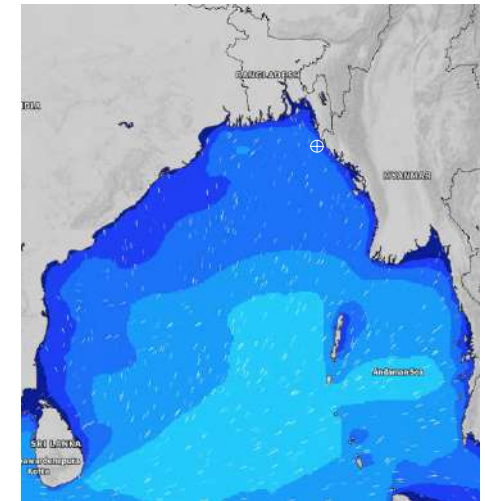
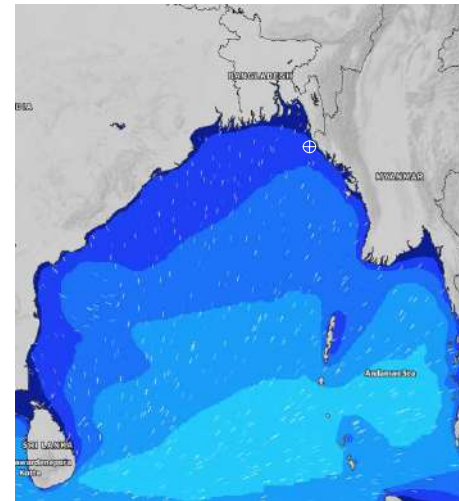
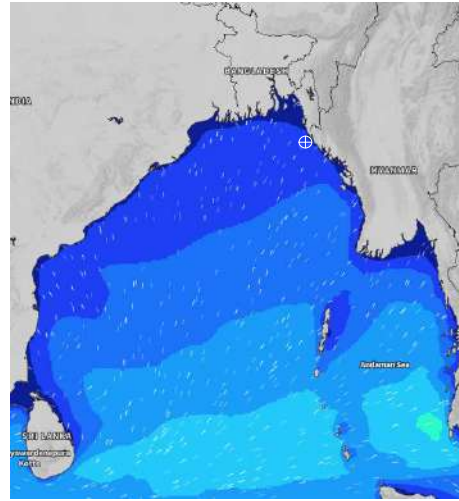
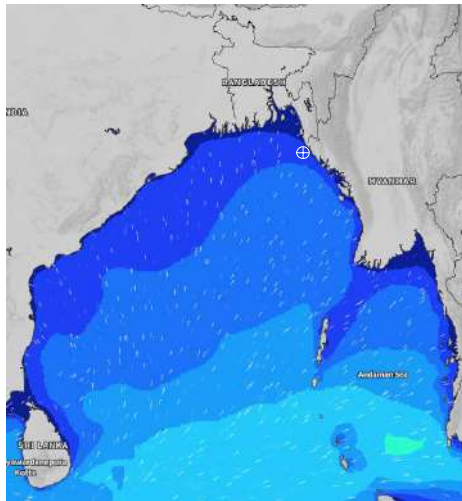
Date	Time	Air Temp (°C)		Sea Surface Temp (°C)	Baro Pressure (mbar)	Wind Direction	Wind Spd (kts)		Wave Ht (m)	Sea State	Humidity (%)	Prob of Rain
		Max	Min				Max	Avg				
20-09-24 (Friday)	0001	31	27	29	1005	SSE	4	3	1.1	3	90	49% (0.4 mm)
	0600			28	1004	SSE	5	4	1.1	3	91	46% (0.3 mm)
	1200			29	1005	SE	8	7	1.1	3	84	38% (0.2 mm)
	1800			29	1003	SE	9	8	1.2	3	88	18% (0.0 mm)
21-09-24 (Saturday)	0001	31	27	29	1005	S	7	6	1.2	3	92	36% (0.2 mm)
	0600			28	1003	S	7	6	1.1	3	94	53% (0.5 mm)
	1200			28	1007	SSE	4	3	1.1	3	78	66% (0.6 mm)
	1800			28	1002	ESE	8	7	1.0	3	87	27% (0.1 mm)
22-09-24 (Sunday)	0001	30	27	28	1005	SSE	9	8	1.1	3	92	18% (0.0 mm)
	0600			28	1004	WSW	11	9	1.0	3	94	16% (0.0 mm)
	1200			28	1006	WSW	11	9	1.1	3	80	66% (0.6 mm)
	1800			29	1002	SSE	9	8	1.1	3	87	24% (0.0 mm)
23-09-24 (Monday)	0001	30	27	28	1003	SSE	15	14	1.4	4	92	49% (0.5 mm)
	0600			28	1000	SSW	14	13	1.4	4	94	40% (0.4 mm)
	1200			29	1004	SE	14	12	1.4	4	79	45% (0.3 mm)
	1800			28	1001	SW	16	14	1.4	4	84	36% (0.2 mm)

20 Sep 2024

21 Sep 2024

22 Sep 2024

23 Sep 2024



Significant wave height (m)



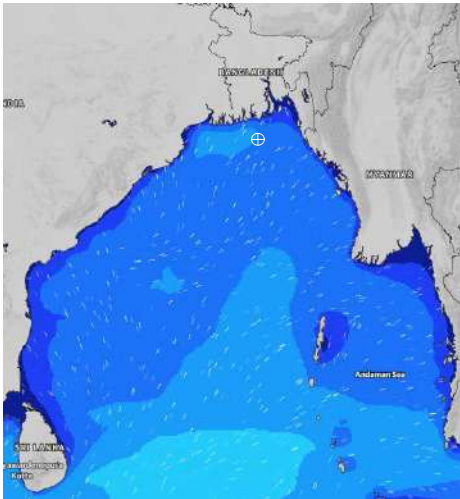
MARINE WEATHER FORECAST (16- 23 Sep 2024)

40 NM ESE OF PAYRA FAIRWAY (21° 07' N, 090° 45' E)

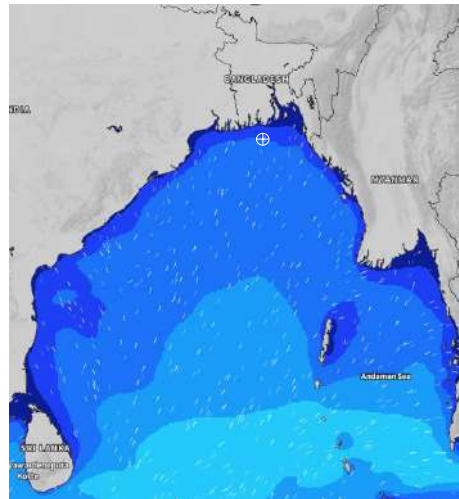


Date	Time	Air Temp (°C)		Sea Surface Temp (°C)	Baro Pressure (mbar)	Wind Direction	Wind Spd (kts)		Wave Ht (m)	Sea State	Humidity (%)	Prob of Rain
		Max	Min				Max	Avg				
16-09-24 (Monday)	0001	31	28	29	1002	S	18	17	2.1	4	92	24% (0.0 mm)
	0600			29	1003	SSE	16	5	1.9	4	94	24% (0.1 mm)
	1200			29	1005	SSE	14	13	1.8	4	79	14% (0.0 mm)
	1800			29	1004	SSE	11	10	1.6	4	86	10% (0.0 mm)
17-09-24 (Tuesday)	0001	32	27	29	1005	SSE	12	7	1.5	4	87	20% (0.0 mm)
	0600			29	1006	SSE	9	8	1.4	4	90	22% (0.0 mm)
	1200			29	1006	SSE	8	7	1.3	4	75	14% (0.0 mm)
	1800			29	1004	S	7	6	1.2	3	82	10% (0.0 mm)
18-09-24 (Wednesday)	0001	32	27	29	1005	SSE	7	6	1.2	3	88	12% (0.0 mm)
	0600			29	1005	SE	5	4	1.2	3	90	14% (0.0 mm)
	1200			29	1005	SSE	5	4	1.2	3	74	16% (0.0 mm)
	1800			29	1003	WSW	5	4	1.2	3	82	20% (0.0 mm)
19-09-24 (Thursday)	0001	31	27	29	1005	SW	7	6	1.2	3	89	14% (0.0 mm)
	0600			29	1005	WSW	6	5	1.1	3	91	16% (0.0 mm)
	1200			29	1005	WSW	6	5	1.1	3	76	20% (0.0 mm)
	1800			29	1003	W	7	6	1.1	3	81	14% (0.0 mm)

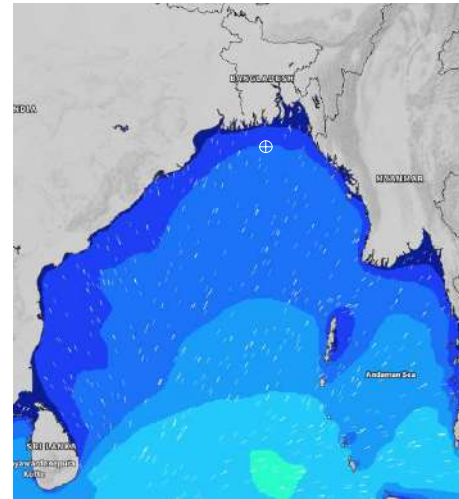
16 Sep 2024



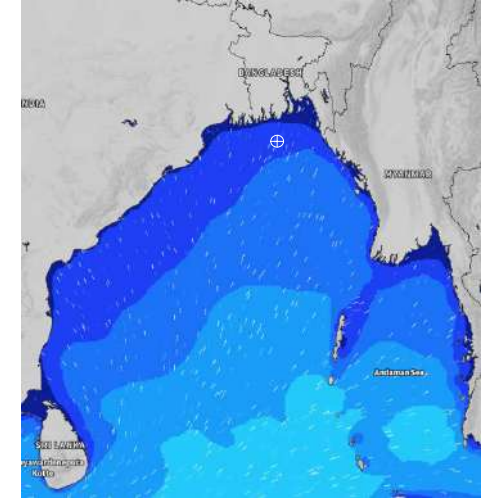
17 Sep 2024



18 Sep 2024



19 Sep 2024



Significant wave height (m)

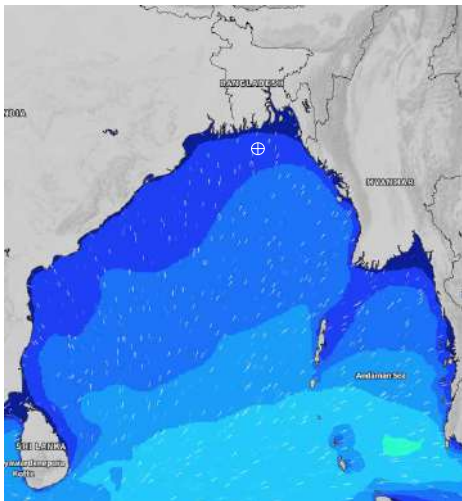


MARINE WEATHER FORECAST (16- 23 Sep 2024) 40 NM ESE OF PAYRA FAIRWAY (21° 07' N, 090° 45' E)

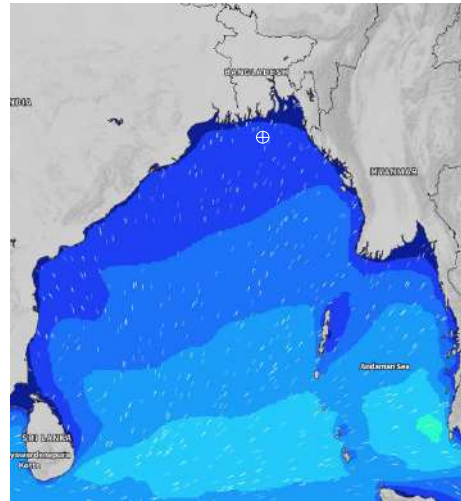


Date	Time	Air Temp (°C)		Sea Surface Temp (°C)	Baro Pressure (mbar)	Wind Direction	Wind Spd (kts)		Wave Ht (m)	Sea State	Humidity (%)	Prob of Rain
		Max	Min				Max	Avg				
20-09-24 (Friday)	0001	32	28	29	1004	SSE	5	4	1.1	3	90	51% (0.4 mm)
	0600			29	1004	S	8	7	1.0	3	92	61% (0.7 mm)
	1200			29	1005	SSE	9	8	1.1	3	76	44% (0.4 mm)
	1800			29	1003	SE	8	6	1.1	3	82	22% (0.0 mm)
21-09-24 (Saturday)	0001	33	28	29	1005	SSE	8	7	1.1	3	89	24% (0.0 mm)
	0600			28	1004	WSW	8	6	1.1	3	92	24% (0.1 mm)
	1200			27	1004	SW	6	5	1.0	3	73	18% (0.0 mm)
	1800			28	1002	WSW	8	7	1.0	3	81	20% (0.0 mm)
22-09-24 (Sunday)	0001	31	28	28	1005	WSW	10	9	1.1	3	89	53% (0.5 mm)
	0600			28	1004	W	10	8	1.1	3	91	55% (0.5 mm)
	1200			29	1005	SSE	11	10	1.1	3	74	57% (0.5 mm)
	1800			29	1003	S	13	12	1.1	3	80	30% (0.1 mm)
23-09-24 (Monday)	0001	31	28	28	1001	SSW	13	11	1.4	4	90	55% (0.5 mm)
	0600			28	1001	S	11	9	1.6	4	91	56% (0.5 mm)
	1200			29	1002	S	17	16	1.5	4	77	58% (0.5 mm)
	1800			29	1000	S	13	12	1.4	4	80	32% (0.2 mm)

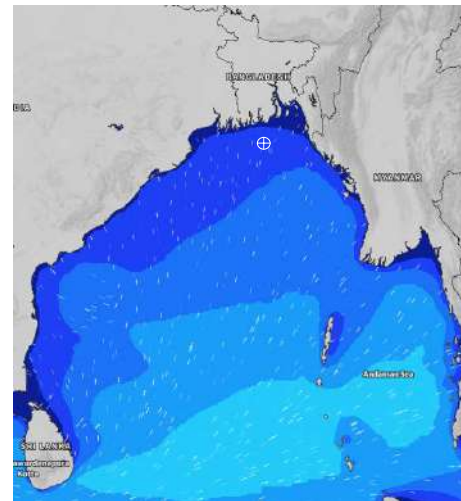
20 Sep 2024



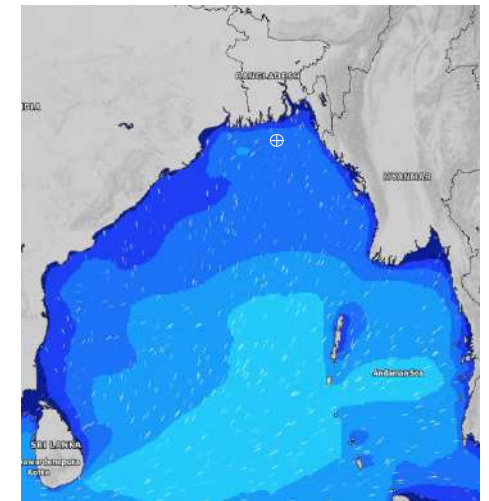
21 Sep 2024



22 Sep 2024



23 Sep 2024



Significant wave height (m)



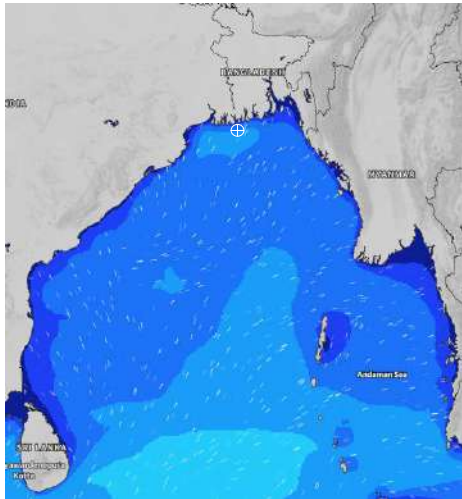
MARINE WEATHER FORECAST (16- 23 Sep 2024)

10 NM SOUTH OF MONGLA FAIRWAY (21° 16' N, 089° 34' E)

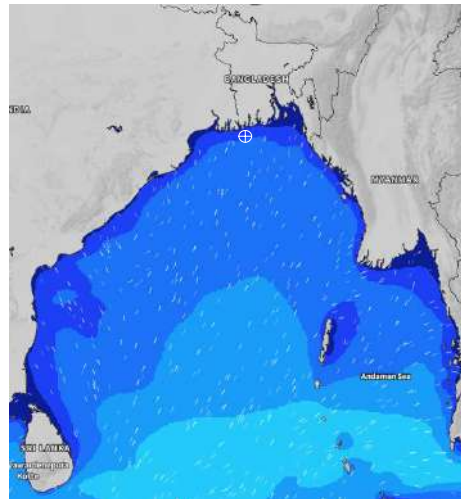


Date	Time	Air Temp (°C)		Sea Surface Temp (°C)	Baro Pressure (mbar)	Wind Direction	Wind Spd (kts)		Wave Ht (m)	Sea State	Humidity (%)	Prob of Rain
		Max	Min				Max	Avg				
16-09-24 (Monday)	0001	31	27	29	1000	SSW	26	23	2.4	4	92	60% (0.6 mm)
	0600			29	1001	S	24	20	2.3	4	94	45% (0.5 mm)
	1200			29	1004	SSE	21	17	2.0	4	81	51% (0.4 mm)
	1800			29	1003	SSE	15	13	1.7	4	84	20% (0.0 mm)
17-09-24 (Tuesday)	0001	33	26	29	1005	SSE	15	14	1.5	4	93	24% (0.0 mm)
	0600			29	1005	SSE	13	12	1.4	4	96	24% (0.0 mm)
	1200			29	1006	SSE	10	9	1.3	4	68	14% (0.0 mm)
	1800			29	1004	SSE	9	8	1.2	3	81	16% (0.0 mm)
18-09-24 (Wednesday)	0001	34	27	29	1005	SSE	7	6	1.2	3	93	14% (0.0 mm)
	0600			29	1005	ESE	5	4	1.2	3	96	16% (0.0 mm)
	1200			29	1006	SE	5	4	1.1	3	68	20% (0.0 mm)
	1800			29	1003	SSW	4	3	1.1	3	80	14% (0.0 mm)
19-09-24 (Thursday)	0001	33	27	29	1005	SSW	7	6	1.1	3	90	21% (0.0 mm)
	0600			29	1005	WSW	5	4	1.1	3	92	47% (0.4 mm)
	1200			29	1005	W	4	3	1.0	3	74	45% (0.4 mm)
	1800			29	1003	WSW	7	6	1.0	3	84	21% (0.0 mm)

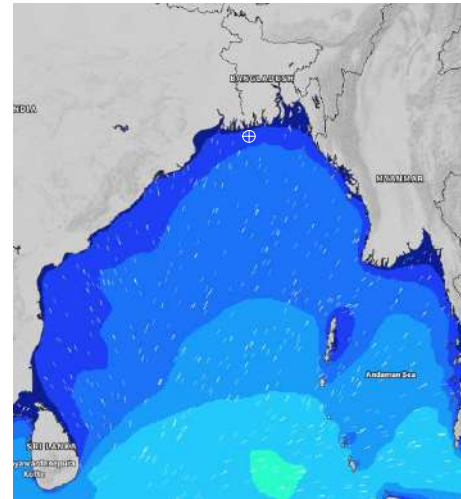
16 Sep 2024



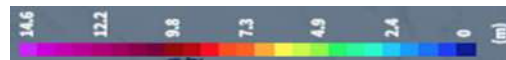
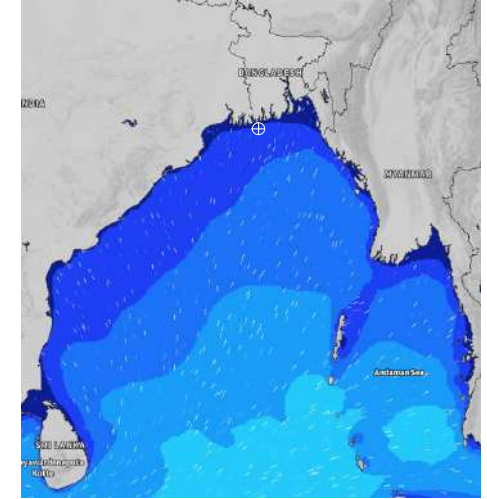
17 Sep 2024



18 Sep 2024



19 Sep 2024



Significant wave height (m)



MARINE WEATHER FORECAST (16- 23 Sep 2024)

10 NM SOUTH OF MONGLA FAIRWAY (21° 16' N, 089° 34' E)



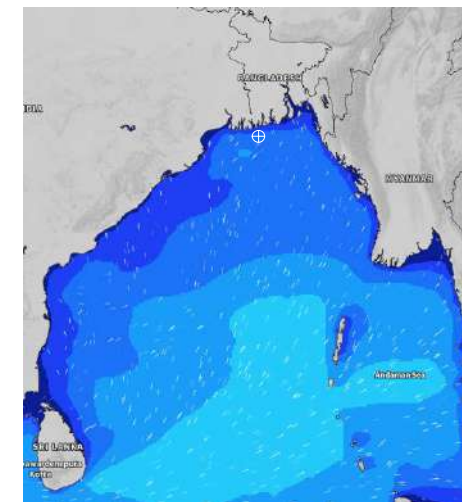
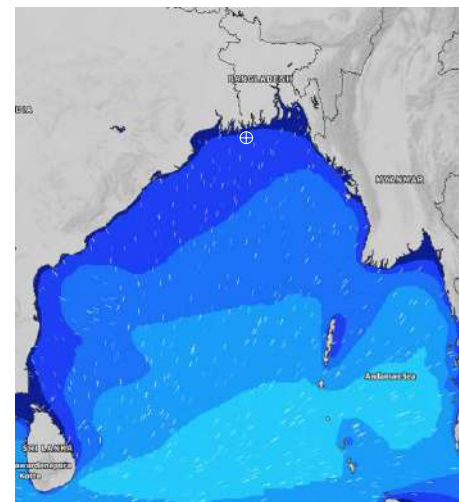
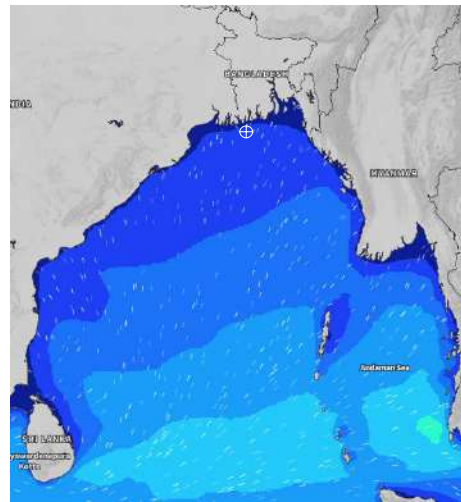
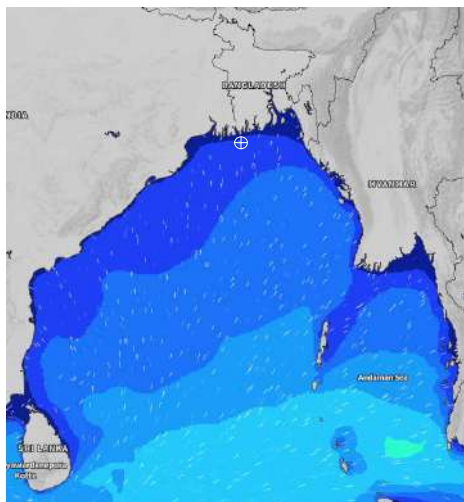
Date	Time	Air Temp (°C)		Sea Surface Temp (°C)	Baro Pressure (mbar)	Wind Direction	Wind Spd (kts)		Wave Ht (m)	Sea State	Humidity (%)	Prob of Rain
		Max	Min				Max	Avg				
20-09-24 (Friday)	0001	33	27	29	1004	SW	6	5	1.0	3	90	50% (0.7 mm)
	0600			29	1004	WSW	8	7	0.9	3	94	56% (0.6 mm)
	1200			29	1005	SW	6	5	0.9	3	73	55% (0.5 mm)
	1800			29	1003	W	5	4	1.0	3	82	21% (0.0 mm)
21-09-24 (Saturday)	0001	35	27	29	1005	S	7	6	1.0	3	90	27% (0.1 mm)
	0600			29	1004	WSW	6	5	1.0	3	94	46% (0.5 mm)
	1200			28	1005	SW	5	4	0.9	3	68	68% (0.6 mm)
	1800			29	1002	SSW	7	6	0.9	3	81	18% (0.0 mm)
22-09-24 (Sunday)	0001	33	28	29	1004	S	10	9	0.9	3	91	26% (0.1 mm)
	0600			29	1002	S	10	9	0.9	3	93	48% (0.5 mm)
	1200			28	1002	S	9	8	1.0	3	70	69% (0.7 mm)
	1800			29	1000	SE	9	8	1.0	3	79	30% (0.1 mm)
23-09-24 (Monday)	0001	32	27	29	1000	S	18	17	1.2	3	92	26% (0.1 mm)
	0600			29	998	S	21	20	2.3	4	93	42% (0.4 mm)
	1200			28	1001	S	15	14	1.5	4	72	60% (0.5 mm)
	1800			29	999	SE	16	15	1.8	4	80	23% (0.0 mm)

20 Sep 2024

21 Sep 2024

22 Sep 2024

23 Sep 2024



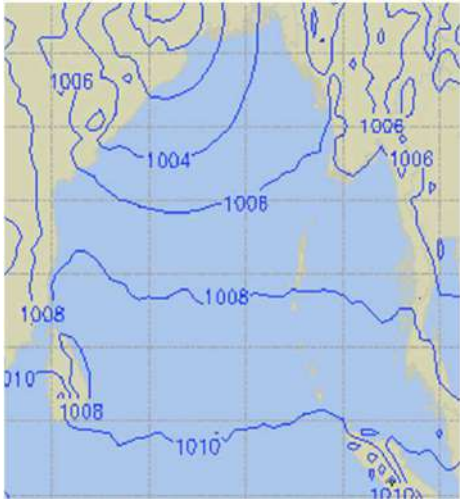
Significant wave height (m)



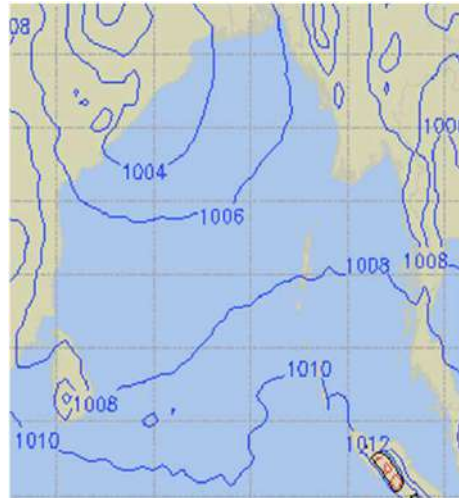
PREDICTED SURFACE PRESSURE FORECAST (16- 22 Sep 2024)



16 Sep 2024



17 Sep 2024



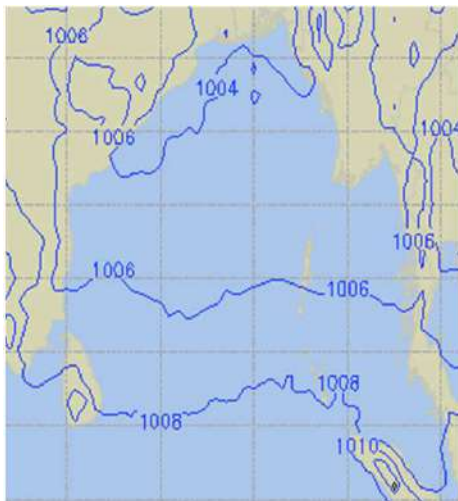
18 Sep 2024



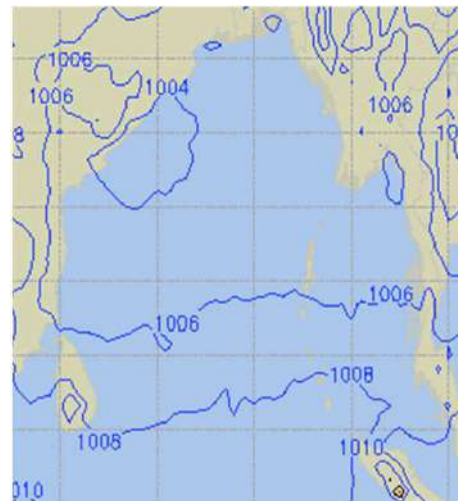
19 Sep 2024



20 Sep 2024



21 Sep 2024



22 Sep 2024

