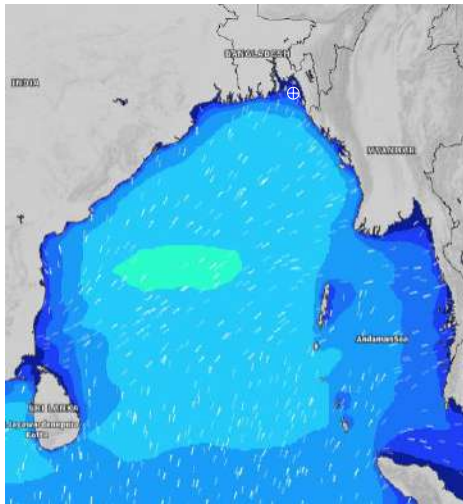


# MARINE WEATHER FORECAST- NEAR AUTHORITY BUOY (Lat 22° 12' N, Long 091° 38' E)

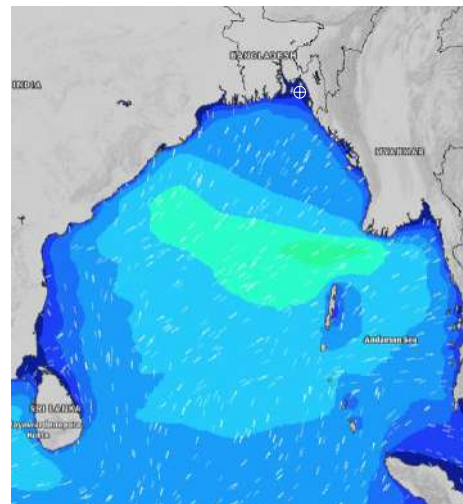
**DATE : 16 to 23 July 2024**

Date	Time	Max Wind Spd (kts)	Wind Direction	Wave Ht (m)	Sea State	Baro Pressure	Air Temp		Sea Surface Temp	Humidity (%)	Prb of Rain (%)	Sea State	Wave Ht (m)
							Max	Min					
16-07-24	0001	13	SE	0.3	2	1003	32	27	28	90%	18% (0.0 mm)	0	0
	0600	11	SE	0.3	2	1003			28	79%	10% (0.0 mm)	1	0 - 0.1
	1200	14	SSW	0.3	2	1003			29	74%	16% (0.0 mm)	2	0.1 - 0.5
	1800	14	SSW	0.4	2	1001			28	84%	46% (0.3 mm)	3	0.5 - 1.25
17-07-24	0001	12	SSE	0.3	2	1003	32	27	28	90%	21% (0.2 mm)	4	1.25 - 2.5
	0600	9	SE	0.2	2	1002			27	90%	11% (0.0 mm)	5	2.5 - 4.0
	1200	8	SW	0.1	1	1002			28	73%	23% (0.0 mm)	6	4.0 - 6.0
	1800	6	SW	0.1	1	1000			29	84%	24% (0.0 mm)	7	6.0 - 9.0
18-07-24	0001	5	S	0.1	1	1001	32	27	28	90%	51% (0.4 mm)	8	9.0 - 14.0
	0600	3	ENE	0.1	1	1000			28	93%	24% (0.0 mm)	9	Over 14.0
	1200	8	WNW	0.1	1	999			30	74%	24% (0.0 mm)		
	1800	10	SSW	0.1	1	998			30	84%	44% (0.4 mm)		
19-07-24	0001	10	SE	0.2	2	1000	32	27	29	88%	31% (0.2 mm)		
	0600	11	ESE	0.3	2	1000			27	90%	24% (0.0 mm)		
	1200	14	SSE	0.3	2	999			31	74%	38% (0.2 mm)		
	1800	14	SSE	0.3	2	998			30	83%	35% (0.2 mm)		

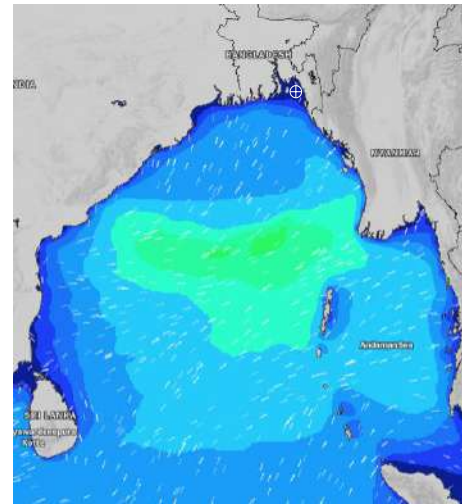
**16 July 24 Tue (Probability 98%)**



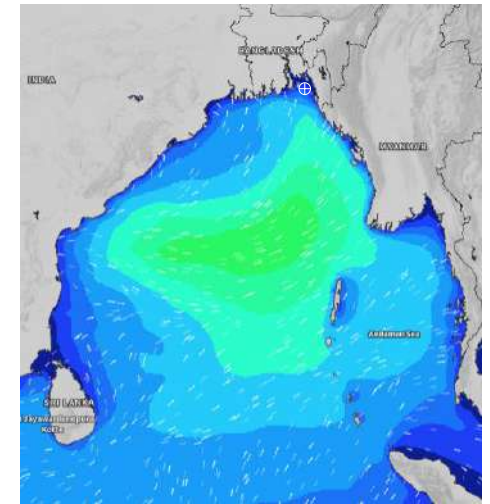
**17 July 24 Wed (Probability 95%)**



**18 July 24 Thu Probability 90%**



**19 July 24 Fri (Probability 80%)**



Significant wave height (m)

**MARINE WEATHER FORECAST- NEAR AUTHORITY BUOY (Lat 22° 12' N, Long 091° 38' E)**

**DATE : 16 to 23 July 2024**

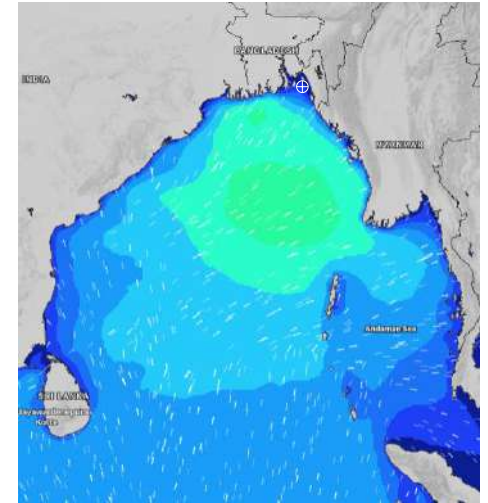
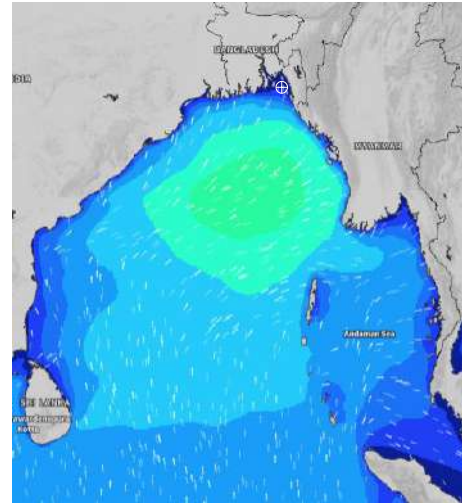
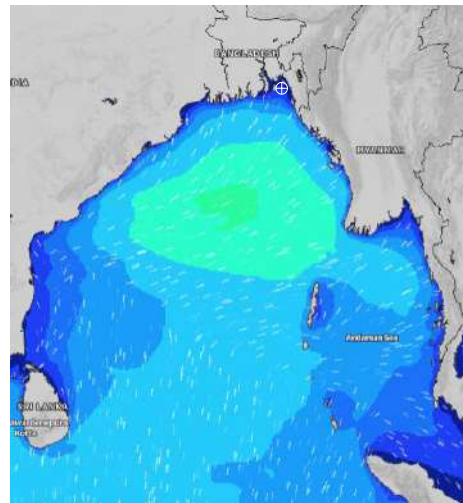
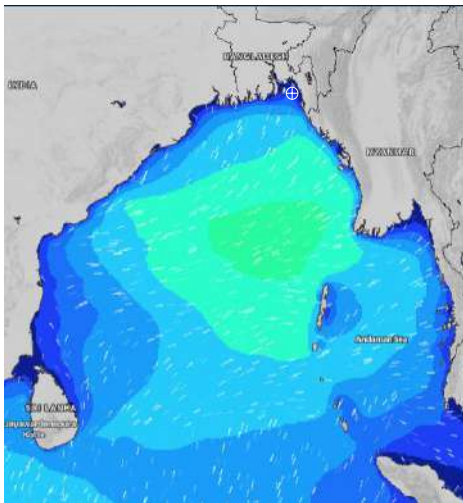
Date	Time	Max Wind Spd (kts)	Wind Direction	Wave Ht (m)	Sea State	Baro Pressure	Air Temp		Sea Surface Temp	Humidity (%)	Prob of Rain (%)	Sea State	Wave Ht (m)
							Max	Min					
20-07-24	0001	17	SE	0.4	2	999	32	27	28	88%	51% (0.6 mm)	0	0
	0600	17	SE	0.4	2	1000			28	88%	45% (0.4 mm)	1	0 - 0.1
	1200	16	S	0.4	2	1000			30	75%	34% (0.2 mm)	2	0.1 - 0.5
	1800	17	SSE	0.4	2	999			29	84%	33% (0.2 mm)	3	0.5 - 1.25
21-07-24	0001	16	SSE	0.4	2	1000	31	26	27	88%	39% (0.2 mm)	4	1.25 - 2.5
	0600	17	SSE	0.4	2	1000			27	89%	30% (0.2 mm)	5	2.5 - 4.0
	1200	17	S	0.4	2	1000			28	75%	64% (0.5 mm)	6	4.0 - 6.0
	1800	18	SSE	0.4	2	999			28	83%	51% (0.4 mm)	7	6.0 - 9.0
22-07-24	0001	17	SE	0.4	2	1001	29	26	27	90%	39% (0.2 mm)	8	9.0 - 14.0
	0600	15	SE	0.4	2	999			27	90%	30% (0.2 mm)	9	Over 14.0
	1200	16	SSE	0.4	2	999			28	76%	64% (0.5 mm)		
	1800	16	SSE	0.4	2	997			27	84%	51% (0.4 mm)		
23-07-24	0001	17	SSE	0.4	2	999	29	26	27	90%	39% (0.2 mm)		
	0600	15	SE	0.3	2	998			27	90%	30% (0.2 mm)		
	1200	18	SSE	0.4	2	999			27	76%	64% (0.5 mm)		
	1800	20	SSE	0.5	2	997			27	84%	51% (0.4 mm)		

**20 July 24 Sat (Probability 70%)**

**21 July 24 Sun (Probability 60%)**

**22 July 24 Mon (Probability 50%)**

**23 July 24 Tue (Probability 50%)**



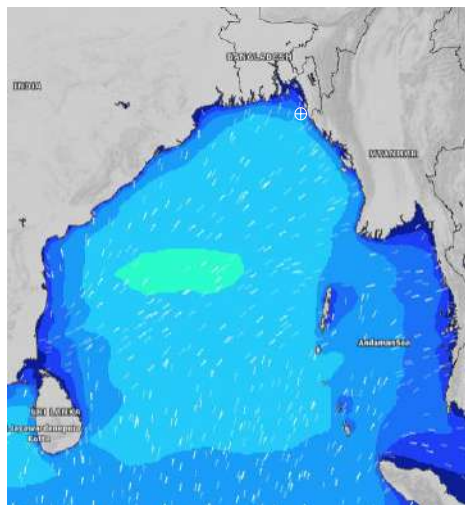
Significant wave height (m)

# MARINE WEATHER FORECAST- 20 NM WEST OF ELEPHANT POINT (Lat 21° 10' N, Long 091° 42' E)

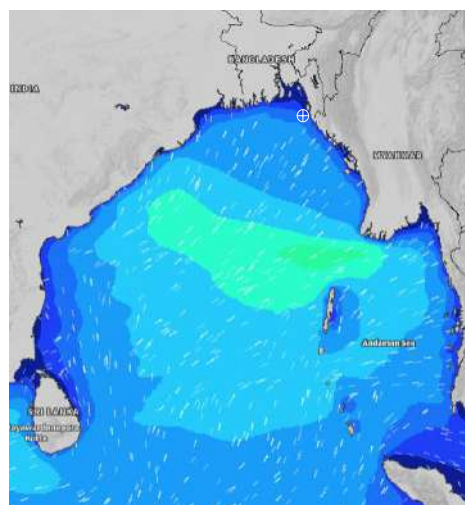
**DATE : 16 to 23 July 2024**

Date	Time	Max Wind Spd (kts)	Wind Direction	Wave Ht (m)	Sea State	Baro Pressure	Air Temp		Sea Surface Temp	Humidity (%)	Prob of Rain (%)	Sea State	Wave Ht (m)
							Max	Min					
16-07-24	0001	25	SE	2.4	4	1003	31	27	28	88%	20% (0.0 mm)	0	0
	0600	20	SE	2.2	4	1003			28	86%	15% (0.0 mm)	1	0 - 0.1
	1200	18	SSE	2.0	4	1004			28	79%	58% (0.5 mm)	2	0.1 - 0.5
	1800	13	SSE	1.8	4	1001			29	87%	18% (0.0 mm)	3	0.5 - 1.25
17-07-24	0001	14	SSE	1.7	4	1003	32	27	29	91%	21% (0.2 mm)	4	1.25 - 2.5
	0600	13	SE	1.6	4	1002			28	91%	11% (0.0 mm)	5	2.5 - 4.0
	1200	12	SSE	1.5	4	1002			28	75%	38% (0.2 mm)	6	4.0 - 6.0
	1800	10	S	1.4	4	999			29	85%	24% (0.1 mm)	7	6.0 - 9.0
18-07-24	0001	6	SE	1.4	4	1001	32	27	29	90%	22% (0.0 mm)	8	9.0 - 14.0
	0600	5	NE	1.4	4	1000			28	91%	13% (0.0 mm)	9	Over 14.0
	1200	10	N	1.5	4	1000			29	74%	47% (0.4 mm)		
	1800	18	SE	1.5	4	998			29	85%	48% (0.3 mm)		
19-07-24	0001	24	SE	2.2	4	999	31	27	29	88%	34% (0.2 mm)		
	0600	25	ESE	2.4	4	999			28	91%	24% (0.0 mm)		
	1200	24	SE	2.5	4	999			28	77%	57% (0.4 mm)		
	1800	26	SE	2.5	4	998			28	86%	42% (0.3 mm)		

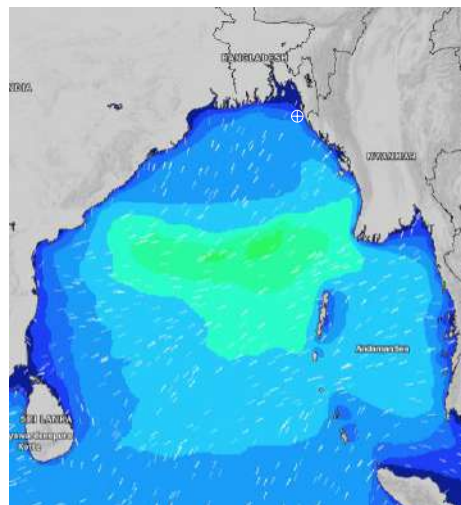
**16 July 24 Tue (Probability 98%)**



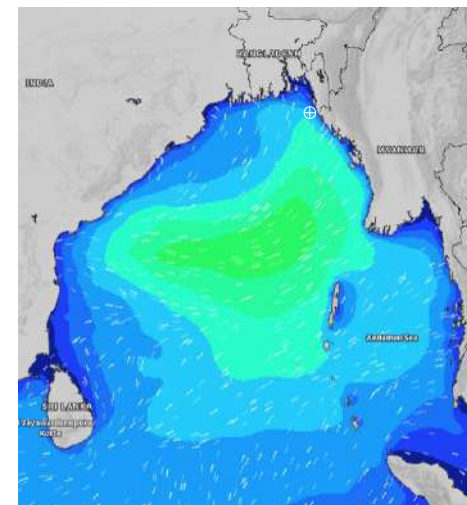
**17 July 24 Wed (Probability 95%)**



**18 July 24 Thu Probability 90%**



**19 July 24 Fri (Probability 80%)**



Significant wave height (m)

# MARINE WEATHER FORECAST- 20 NM WEST OF ELEPHANT POINT (Lat 21° 10' N, Long 091° 42' E)

**DATE : 16 to 23 July 2024**

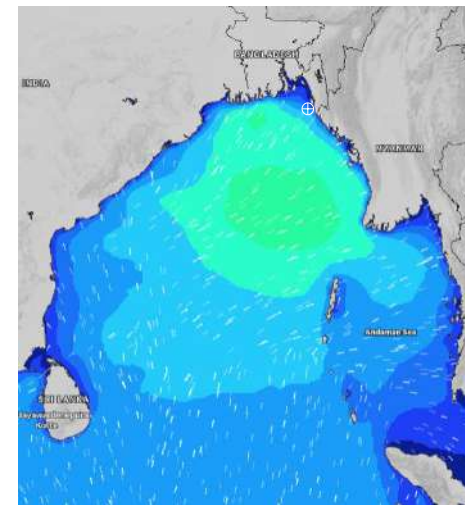
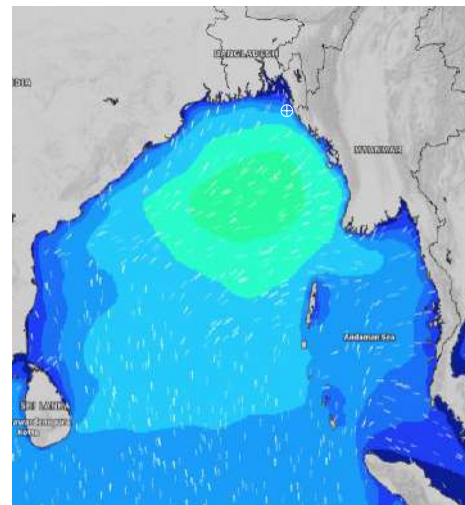
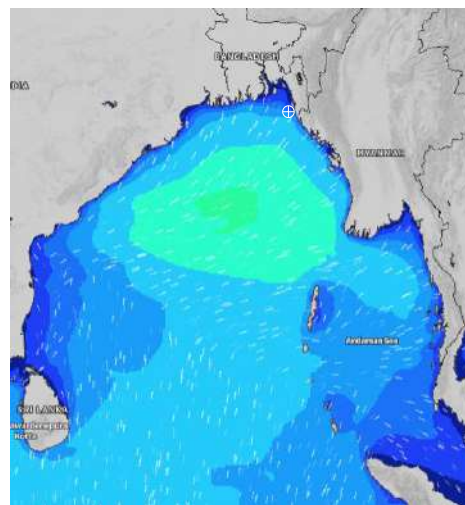
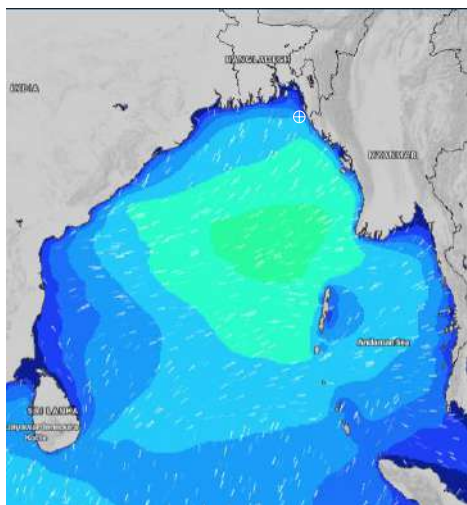
Date	Time	Max Wind Spd (kts)	Wind Direction	Wave Ht (m)	Sea State	Baro Pressure	Air Temp		Sea Surface Temp	Humidity (%)	Prob of Rain (%)	Sea State	Wave Ht (m)
							Max	Min					
20-07-24	0001	25	SE	2.6	5	999	31	27	28	88%	60% (0.6 mm)	0	0
	0600	24	SE	2.5	4	1000			28	91%	45% (0.4 mm)	1	0 - 0.1
	1200	19	SSE	2.3	4	1000			28	81%	72% (0.7 mm)	2	0.1 - 0.5
	1800	16	S	2.1	4	999			28	87%	67% (0.5 mm)	3	0.5 - 1.25
21-07-24	0001	18	S	2.1	4	1000	29	26	28	88%	56% (0.4 mm)	4	1.25 - 2.5
	0600	17	S	2.1	4	1000			28	91%	60% (0.6 mm)	5	2.5 - 4.0
	1200	18	S	2.1	4	1000			28	82%	45% (0.4 mm)	6	4.0 - 6.0
	1800	17	S	2.1	4	999			28	90%	60% (0.7 mm)	7	6.0 - 9.0
22-07-24	0001	14	S	2.0	4	1001	29	26	28	90%	56% (0.4 mm)	8	9.0 - 14.0
	0600	15	SSW	2.1	4	999			28	92%	60% (0.6 mm)	9	Over 14.0
	1200	14	S	2.1	4	999			28	87%	45% (0.4 mm)		
	1800	12	SSW	2.1	4	998			28	90%	60% (0.7 mm)		
23-07-24	0001	15	SW	2.1	4	999	28	26	28	90%	56% (0.4 mm)		
	0600	18	SSW	2.2	4	998			28	92%	60% (0.6 mm)		
	1200	17	SSW	2.2	4	999			27	87%	45% (0.4 mm)		
	1800	22	SSW	2.4	4	998			28	90%	60% (0.7 mm)		

**20 July 24 Sat (Probability 70%)**

**21 July 24 Sun (Probability 60%)**

**22 July 24 Mon (Probability 50%)**

**23 July 24 Tue (Probability 50%)**



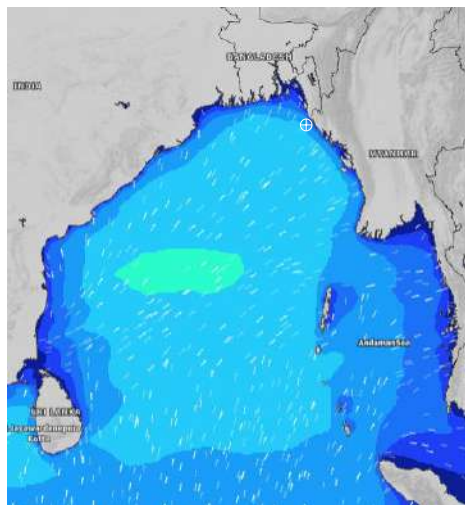
Significant wave height (m)

# MARINE WEATHER FORECAST- 15 NM WEST OF ST. MARTIN'S LIGHT HOUSE (Lat 20° 37'N, Long 092° 03'E)

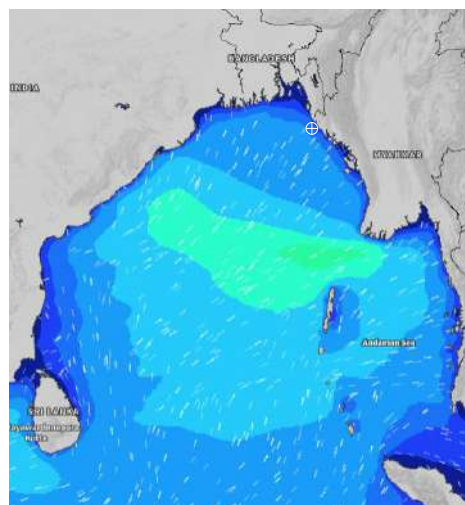
**DATE : 16 to 23 July 2024**

Date	Time	Max Wind Spd (kts)	Wind Direction	Wave Ht (m)	Sea State	Baro Pressure	Air Temp		Sea Surface Temp	Humidity (%)	Prob of Rain(%)	Sea State	Wave Ht (m)
							Max	Min					
16-07-24	0001	21	SSE	2.7	5	1003	30	27	28	91%	75% (0.6 mm)	0	0
	0600	15	SSE	2.6	5	1002			28	91%	49% (0.4 mm)	1	0 - 0.1
	1200	12	SSE	2.5	4	1004			28	84%	90% (1.1 mm)	2	0.1 - 0.5
	1800	11	S	2.3	4	1001			29	89%	34% (0.1 mm)	3	0.5 - 1.25
17-07-24	0001	12	SSE	2.1	4	1003	31	27	29	91%	33% (0.2 mm)	4	1.25 - 2.5
	0600	11	SE	1.9	4	1001			28	93%	23% (0.0 mm)	5	2.5 - 4.0
	1200	12	SE	1.8	4	1003			29	81%	30% (0.2 mm)	6	4.0 - 6.0
	1800	8	SSE	1.8	4	999			29	87%	18% (0.0 mm)	7	6.0 - 9.0
18-07-24	0001	6	SSE	1.8	4	1001	31	27	29	91%	21% (0.0 mm)	8	9.0 - 14.0
	0600	5	NNE	1.8	4	999			29	91%	24% (0.0 mm)	9	Over 14.0
	1200	9	E	2.0	4	1000			29	78%	42% (0.2 mm)		
	1800	25	SE	2.3	4	997			28	87%	39% (0.2 mm)		
19-07-24	0001	30	SE	2.8	5	1000	30	26	28	90%	53% (0.4 mm)		
	0600	29	SE	3.3	5	998			28	92%	24% (0.1 mm)		
	1200	22	SE	3.0	5	1000			28	84%	34% (0.2 mm)		
	1800	24	SE	3.1	5	997			28	89%	34% (0.2 mm)		

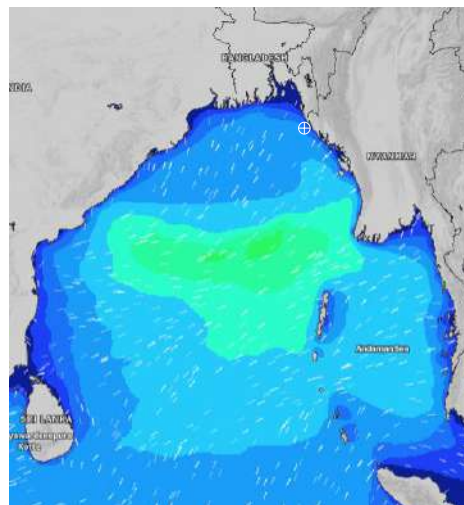
**16 July 24 Tue (Probability 98%)**



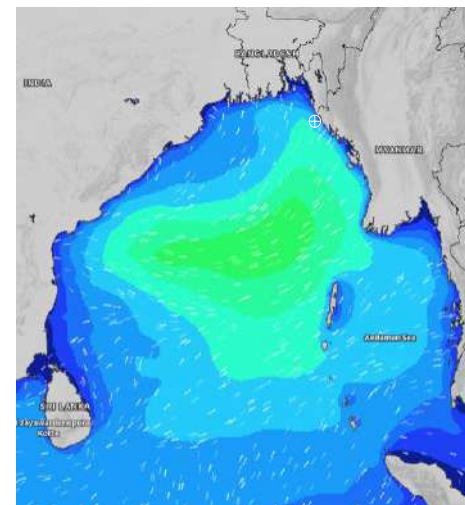
**17 July 24 Wed (Probability 95%)**



**18 July 24 Thu Probability 90%**



**19 July 24 Fri (Probability 80%)**



Significant wave height (m)

# MARINE WEATHER FORECAST- 15 NM WEST OF ST. MARTIN'S LIGHT HOUSE (Lat 20° 37'N, Long 092° 03'E)

**DATE : 16 to 23 July 2024**

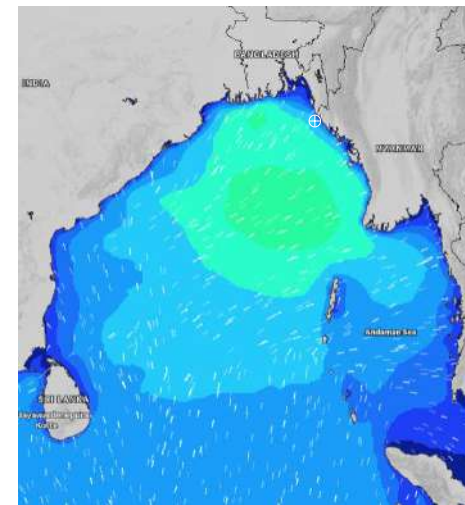
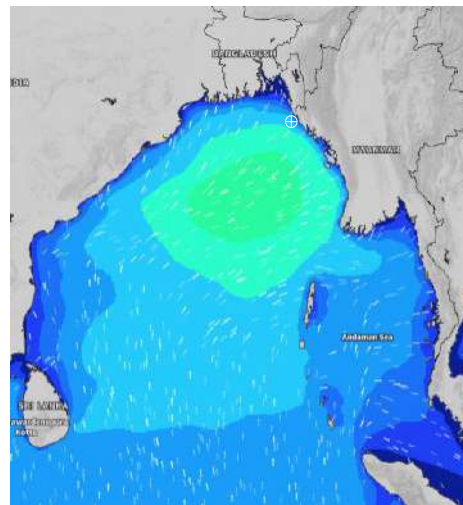
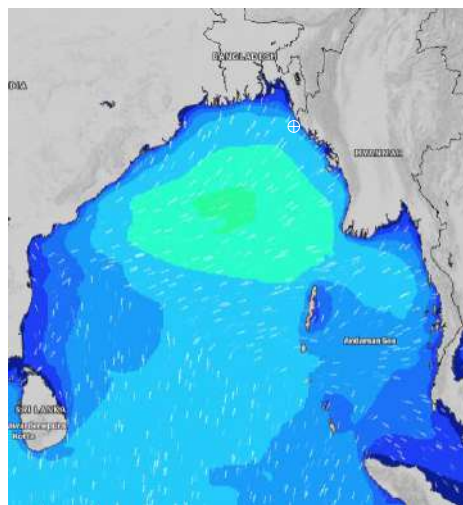
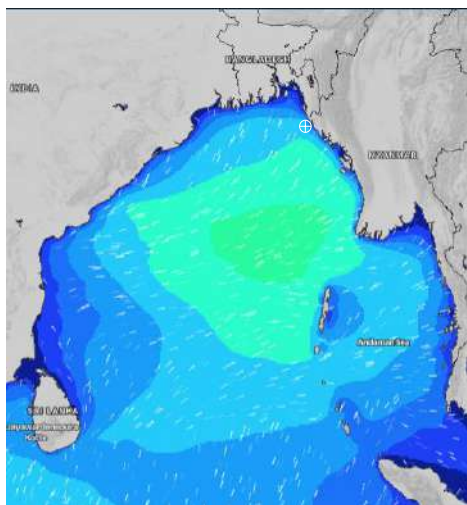
Date	Time	Max Wind Spd (kts)	Wind Direction	Wave Ht (m)	Sea State	Baro Pressure	Air Temp		Sea Surface Temp	Humidity (%)	Prob of Rain (%)	Sea State	Wave Ht (m)
							Max	Min					
20-07-24	0001	23	SSE	3.2	5	1000	29	26	28	91%	64% (0.6 mm)	0	0
	0600	19	SSE	3.1	5	999			28	93%	75% (0.7 mm)	1	0 - 0.1
	1200	18	S	2.9	5	1001			29	87%	43% (0.1 mm)	2	0.1 - 0.5
	1800	18	SSW	2.8	5	999			29	90%	34% (0.2 mm)	3	0.5 - 1.25
21-07-24	0001	17	SSW	2.7	5	1002	29	26	29	91%	64% (0.6 mm)	4	1.25 - 2.5
	0600	17	SSW	2.8	5	1000			28	93%	75% (0.7 mm)	5	2.5 - 4.0
	1200	18	SSW	2.7	5	1002			29	88%	43% (0.1 mm)	6	4.0 - 6.0
	1800	19	SSW	2.7	5	999			28	90%	34% (0.2 mm)	7	6.0 - 9.0
22-07-24	0001	18	SSW	2.8	5	1002	28	26	28	91%	64% (0.6 mm)	8	9.0 - 14.0
	0600	17	SW	2.9	5	1000			28	93%	75% (0.7 mm)	9	Over 14.0
	1200	17	SW	2.9	5	1001			28	87%	43% (0.1 mm)		
	1800	18	SW	3.1	5	998			28	90%	34% (0.2 mm)		
23-07-24	0001	14	SW	3.0	5	1000	28	26	28	91%	64% (0.6 mm)		
	0600	16	SW	2.9	5	998			28	93%	75% (0.7 mm)		
	1200	13	SW	2.9	5	1000			27	90%	43% (0.1 mm)		
	1800	18	SW	3.0	5	998			28	90%	34% (0.2 mm)		

**20 July 24 Sat (Probability 70%)**

**21 July 24 Sun (Probability 60%)**

**22 July 24 Mon (Probability 50%)**

**23 July 24 Tue (Probability 50%)**



Significant wave height (m)

# MARINE WEATHER FORECAST- 40 NM ESE OF PAYRA FAIRWAY (Lat 21° 07' N, Long 090° 45' E)

**DATE : 16 to 23 July 2024**

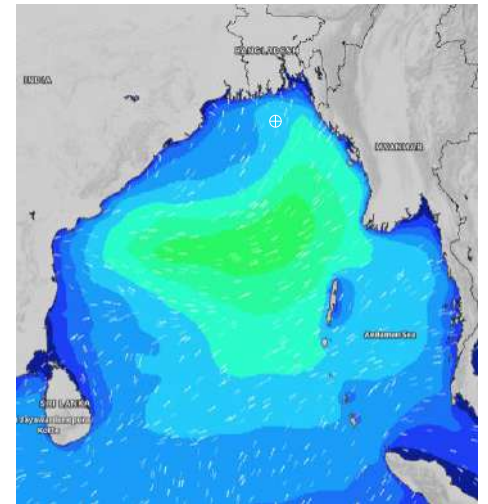
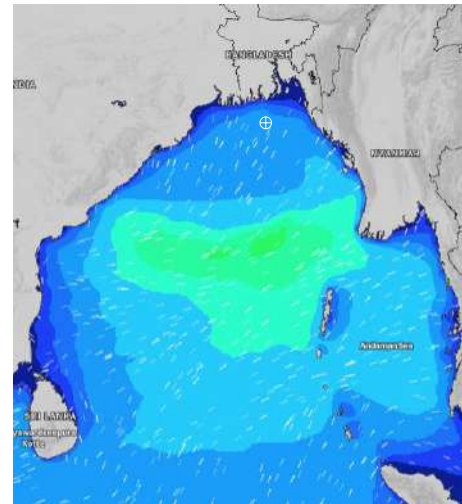
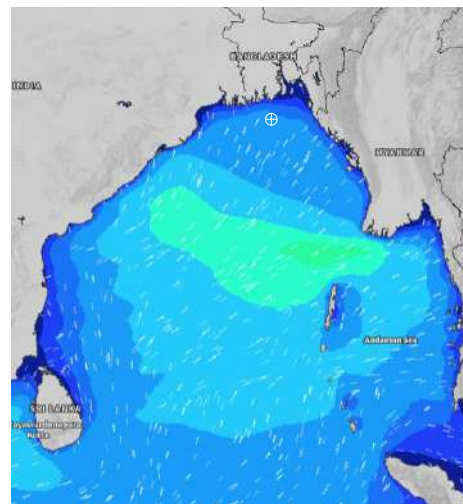
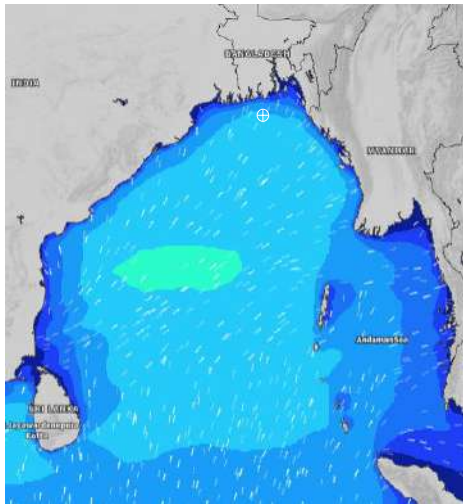
Date	Time	Max Wind Spd (kts)	Wind Direction	Wave Ht (m)	Sea State	Baro Pressure	Air Temp		Sea Surface Temp	Humidity (%)	Prob of Rain (%)	Sea State	Wave Ht (m)
							Max	Min					
16-07-24	0001	16	SSE	2.6	5	1002	31	28	29	87%	43% (0.2 mm)	0	0
	0600	16	SSE	2.7	5	1002			28	88%	18% (0.4 mm)	1	0 - 0.1
	1200	14	S	2.6	5	1003			29	83%	74% (0.2 mm)	2	0.1 - 0.5
	1800	11	S	2.4	4	1001			29	85%	10% (0.0 mm)	3	0.5 - 1.25
17-07-24	0001	12	S	2.2	4	1002	31	28	29	87%	31% (0.2 mm)	4	1.25 - 2.5
	0600	10	SSE	2.0	4	1001			29	90%	30% (0.2 mm)	5	2.5 - 4.0
	1200	10	SE	1.9	4	1002			29	80%	23% (0.0 mm)	6	4.0 - 6.0
	1800	9	SSE	1.9	4	999			29	83%	10% (0.0 mm)	7	6.0 - 9.0
18-07-24	0001	7	SSE	1.9	4	1001	32	28	29	88%	11% (0.2 mm)	8	9.0 - 14.0
	0600	5	ENE	1.9	4	1000			29	89%	34% (0.2 mm)	9	Over 14.0
	1200	8	ESE	2.0	4	1000			29	77%	23% (0.0 mm)		
	1800	11	ESE	1.9	4	998			30	82%	10% (0.0 mm)		
19-07-24	0001	23	ESE	2.4	4	998	31	28	29	87%	37% (0.2 mm)		
	0600	24	ESE	3.0	5	997			29	90%	44% (0.3 mm)		
	1200	21	SE	2.9	5	998			29	80%	32% (0.2 mm)		
	1800	23	SE	3.0	5	996			29	84%	24% (0.0 mm)		

**16 July 24 Tue (Probability 98%)**

**17 July 24 Wed (Probability 95%)**

**18 July 24 Thu Probability 90%**

**19 July 24 Fri (Probability 80%)**



Significant wave height (m)

# MARINE WEATHER FORECAST- 40 NM ESE OF PAYRA FAIRWAY (Lat 21° 07' N, Long 090° 45' E)

**DATE : 16 to 23 July 2024**

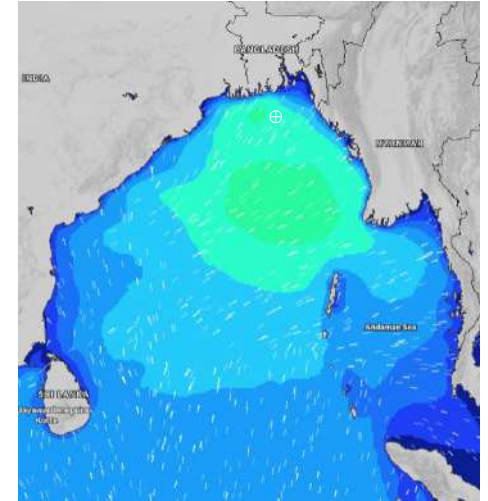
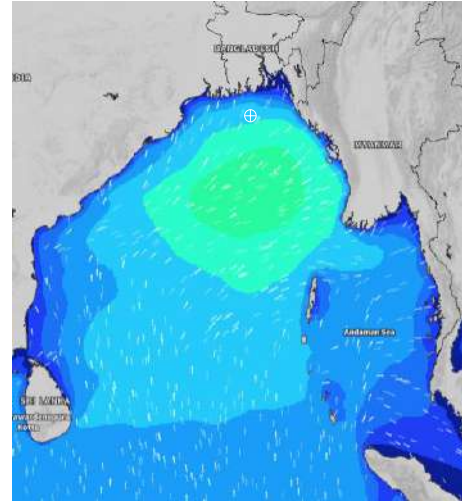
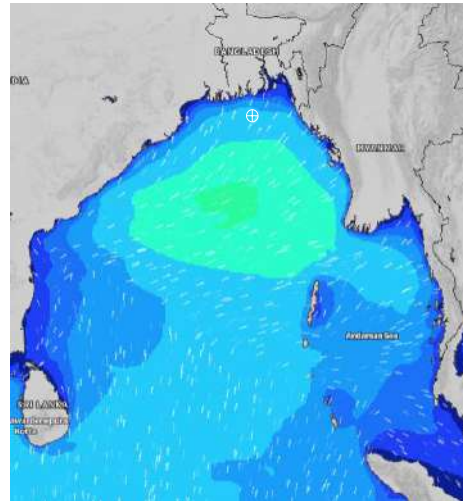
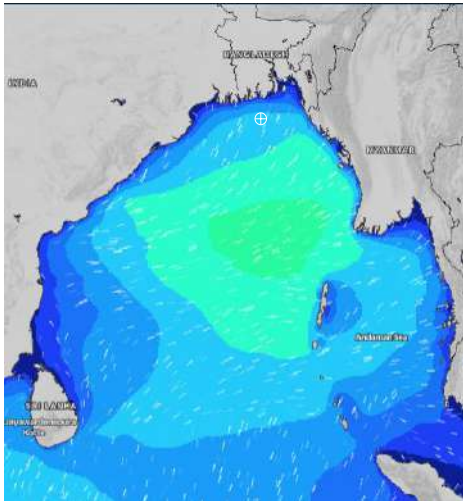
Date	Time	Max Wind Spd (kts)	Wind Direction	Wave Ht (m)	Sea State	Baro Pressure	Air Temp		Sea Surface Temp	Humidity (%)	Prob of Rain (%)	Sea State	Wave Ht (m)
							Max	Min					
20-07-24	0001	18	SSE	2.9	5	998	31	28	29	87%	55% (0.4 mm)	0	0
	0600	16	SSE	2.8	5	998			29	90%	44% (0.4 mm)	1	0 - 0.1
	1200	17	S	2.7	5	999			29	83%	43% (0.4 mm)	2	0.1 - 0.5
	1800	16	S	2.7	5	998			29	85%	24% (0.1 mm)	3	0.5 - 1.25
21-07-24	0001	18	S	2.7	5	999	30	27	29	87%	61% (0.6 mm)	4	1.25 - 2.5
	0600	16	SSW	2.7	5	999			29	90%	44% (0.4 mm)	5	2.5 - 4.0
	1200	14	SSW	2.7	5	999			29	84%	43% (0.4 mm)	6	4.0 - 6.0
	1800	16	SSW	2.7	5	998			29	85%	24% (0.1 mm)	7	6.0 - 9.0
22-07-24	0001	15	SSW	2.7	5	1000	30	27	29	88%	61% (0.6 mm)	8	9.0 - 14.0
	0600	16	SW	2.7	5	999			29	90%	44% (0.4 mm)	9	Over 14.0
	1200	15	SW	2.8	5	998			29	84%	43% (0.4 mm)		
	1800	12	SW	2.8	5	997			28	86%	24% (0.1 mm)		
23-07-24	0001	20	SW	2.9	5	998	29	27	28	88%	61% (0.6 mm)		
	0600	21	SW	3.1	5	997			28	90%	44% (0.4 mm)		
	1200	20	SW	3.3	5	998			28	86%	43% (0.4 mm)		
	1800	23	SW	3.5	5	997			28	87%	24% (0.1 mm)		

**20 July 24 Sat (Probability 70%)**

**21 July 24 Sun (Probability 60%)**

**22 July 24 Mon (Probability 50%)**

**23 July 24 Tue (Probability 50%)**



Significant wave height (m)

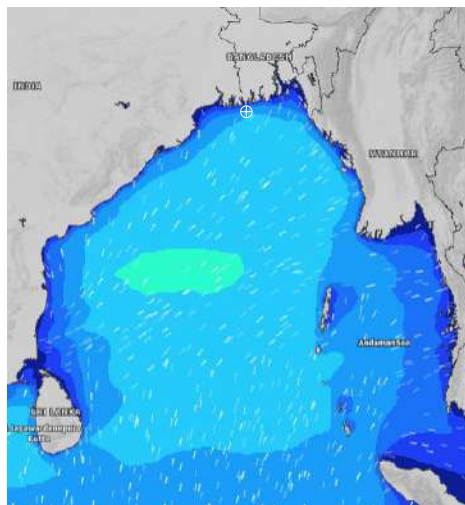


# MARINE WEATHER FORECAST- 10 NM SOUTH OF MONGLA FAIRWAY (Lat 21° 16' N, Long 089° 34' E)

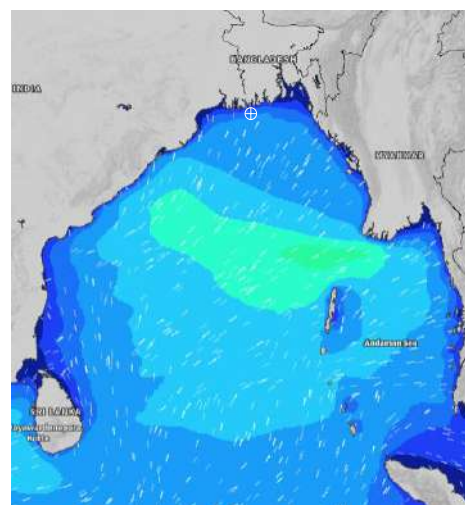
**DATE : 16 to 23 July 2024**

Date	Time	Max Wind Spd (kts)	Wind Direction	Wave Ht (m)	Sea State	Baro Pressure	Air Temp		Sea Surface Temp	Humidity (%)	Prob of Rain (%)	Sea State	Wave Ht (m)
							Max	Min					
16-07-24	0001	13	SSE	2.3	4	1000	32	27	29	89%	20% (0.0 mm)	0	0
	0600	14	SSE	2.6	5	1001			29	89%	17% (0.0 mm)	1	0 - 0.1
	1200	14	S	2.5	4	1002			29	79%	66% (0.4 mm)	2	0.1 - 0.5
	1800	12	S	2.3	4	1000			29	81%	14% (0.0 mm)	3	0.5 - 1.25
17-07-24	0001	13	S	2.2	4	1002	33	27	29	90%	30% (0.2 mm)	4	1.25 - 2.5
	0600	9	S	2.0	4	1001			29	93%	33% (0.2 mm)	5	2.5 - 4.0
	1200	10	SE	1.9	4	1001			29	74%	42% (0.3 mm)	6	4.0 - 6.0
	1800	8	SE	1.9	4	999			29	76%	10% (0.0 mm)	7	6.0 - 9.0
18-07-24	0001	8	SSE	1.9	4	1000	33	28	29	90%	18% (0.0 mm)	8	9.0 - 14.0
	0600	6	ESE	2.0	4	999			29	92%	24% (0.0 mm)	9	Over 14.0
	1200	8	E	1.9	4	1000			30	71%	32% (0.2 mm)		
	1800	8	E	1.8	4	997			30	76%	10% (0.0 mm)		
19-07-24	0001	18	E	1.8	4	998	33	27	29	87%	18% (0.0 mm)		
	0600	17	ESE	2.3	4	997			29	90%	36% (0.2 mm)		
	1200	17	ESE	2.5	4	997			29	73%	48% (0.3 mm)		
	1800	16	ESE	2.4	4	995			29	79%	10% (0.0 mm)		

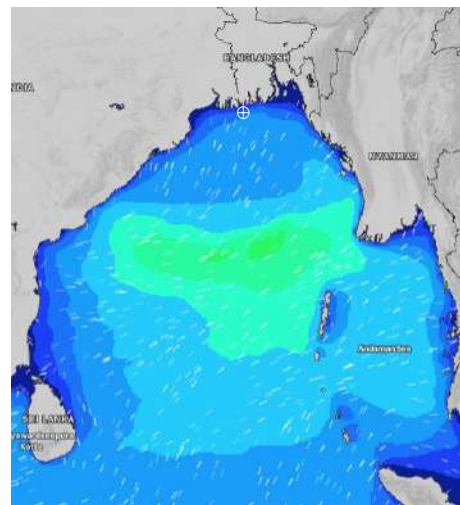
**16 July 24 Tue (Probability 98%)**



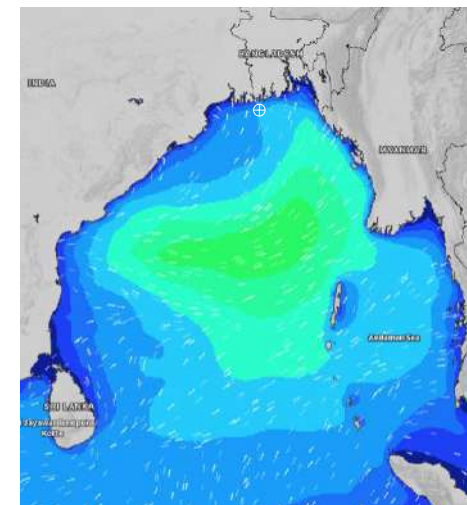
**17 July 24 Wed (Probability 95%)**



**18 July 24 Thu Probability 90%**



**19 July 24 Fri (Probability 80%)**



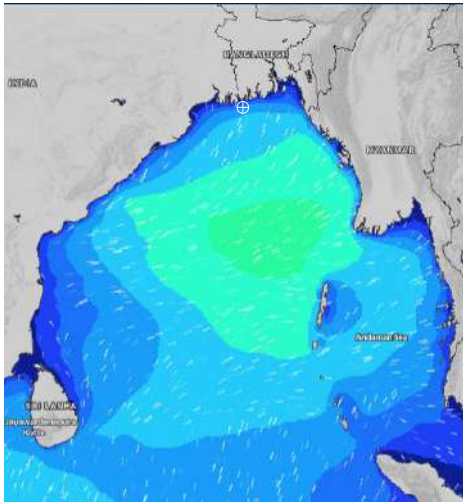
Significant wave height (m)

# MARINE WEATHER FORECAST- 10 NM SOUTH OF MONGLA FAIRWAY (Lat 21° 16' N, Long 089° 34' E)

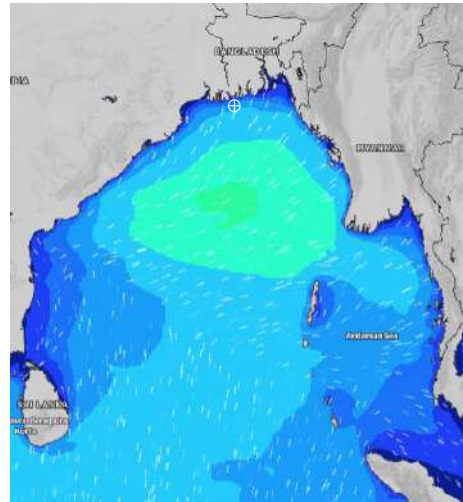
**DATE : 16 to 23 July 2024**

Date	Time	Max Wind Spd (kts)	Wind Direction	Wave Ht (m)	Sea State	Baro Pressure	Air Temp		Sea Surface Temp	Humidity (%)	Prob of Rain (%)	Sea State	Wave Ht (m)
							Max	Min					
20-07-24	0001	15	S	2.5	4	997	32	27	29	87%	21% (0.0 mm)	0	0
	0600	13	SSE	2.4	4	997			29	91%	42% (0.2 mm)	1	0 - 0.1
	1200	13	S	2.4	4	998			29	77%	52% (0.3 mm)	2	0.1 - 0.5
	1800	15	SSW	2.5	4	997			29	82%	24% (0.0 mm)	3	0.5 - 1.25
21-07-24	0001	16	S	2.5	4	998	32	27	29	89%	43% (0.2 mm)	4	1.25 - 2.5
	0600	15	SSW	2.5	4	998			29	91%	57% (0.4 mm)	5	2.5 - 4.0
	1200	16	SSW	2.5	4	998			29	77%	63% (0.5 mm)	6	4.0 - 6.0
	1800	15	SW	2.5	4	997			29	84%	24% (0.0 mm)	7	6.0 - 9.0
22-07-24	0001	15	SW	2.5	4	999	31	27	28	90%	43% (0.2 mm)	8	9.0 - 14.0
	0600	14	SW	2.5	4	997			28	92%	57% (0.4 mm)	9	Over 14.0
	1200	12	WSW	2.6	5	998			28	80%	63% (0.5 mm)		
	1800	17	WSW	2.6	5	996			29	84%	24% (0.0 mm)		
23-07-24	0001	22	WSW	2.9	5	997	30	27	28	90%	43% (0.2 mm)		
	0600	30	WSW	3.5	5	994			27	92%	57% (0.4 mm)		
	1200	30	WSW	3.7	5	996			28	80%	63% (0.5 mm)		
	1800	24	WSW	3.5	5	996			28	84%	24% (0.0 mm)		

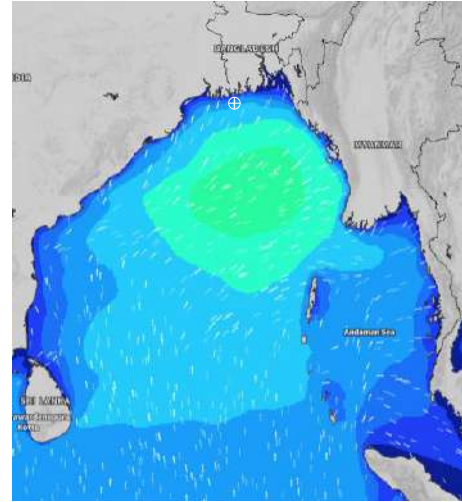
**20 July 24 Sat (Probability 70%)**



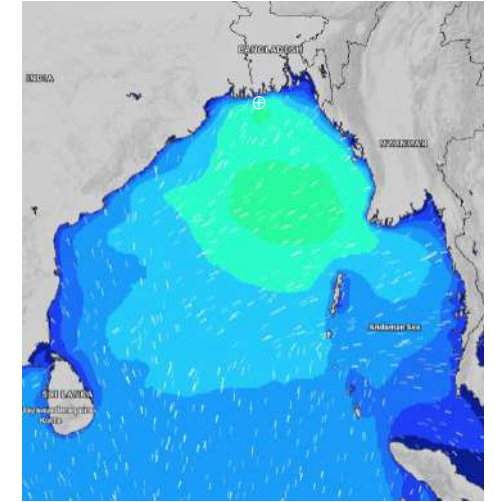
**21 July 24 Sun (Probability 60%)**



**22 July 24 Mon (Probability 50%)**



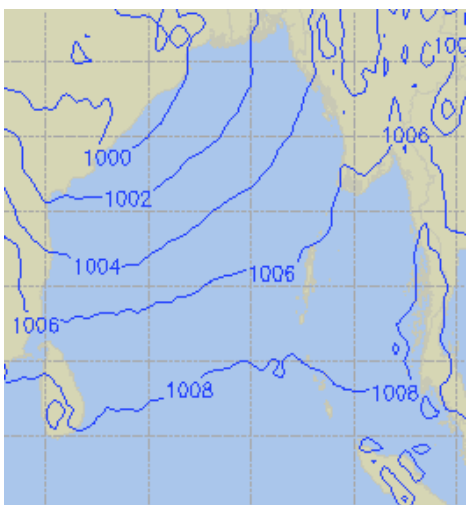
**23 July 24 Tue (Probability 50%)**



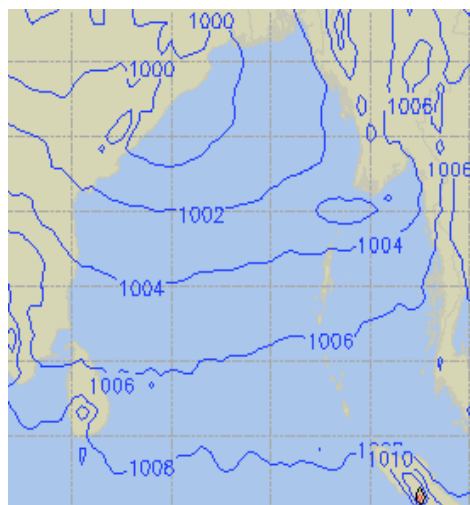
Significant wave height (m)

## PREDICTED SURFACE PRESSURE FORECAST (16 to 22 July 2024)

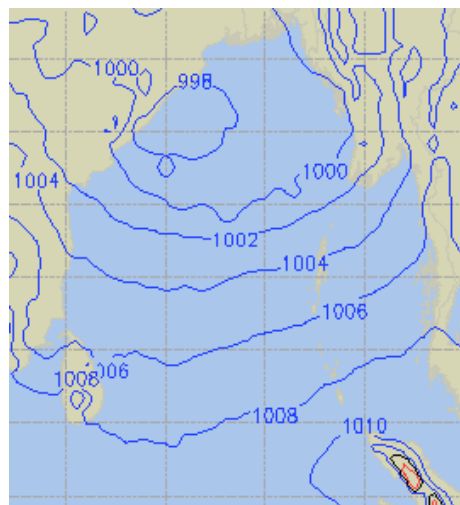
**16 July 24 Tue (Probability 98%)**



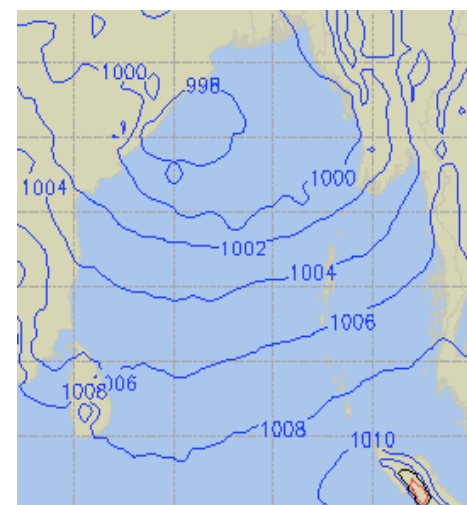
**17 July 24 Wed (Probability 95%)**



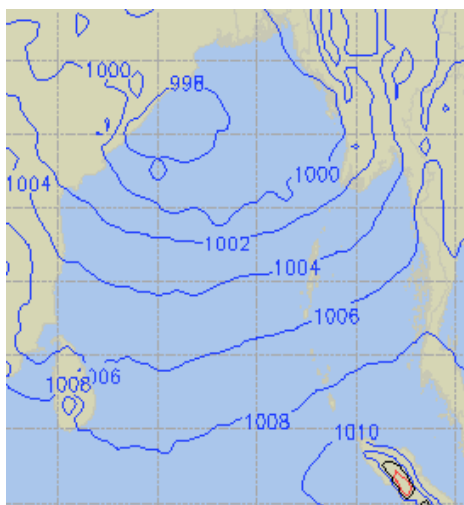
**18 July 24 Thu (Probability 90%)**



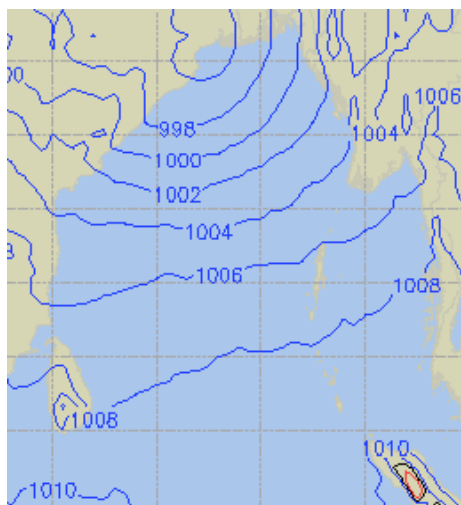
**19 July 24 Fri (Probability 80%)**



**20 July 24 Sat (Probability 70%)**



**21 July 24 Sun (Probability 60%)**



**22 July 24 Mon (Probability 50%)**

