

MARINE WEATHER FORECAST- NEAR AUTHORITY BUOY (Lat 22° 12' N, Long 091° 38' E)

DATE : 16 to 23 May 2024

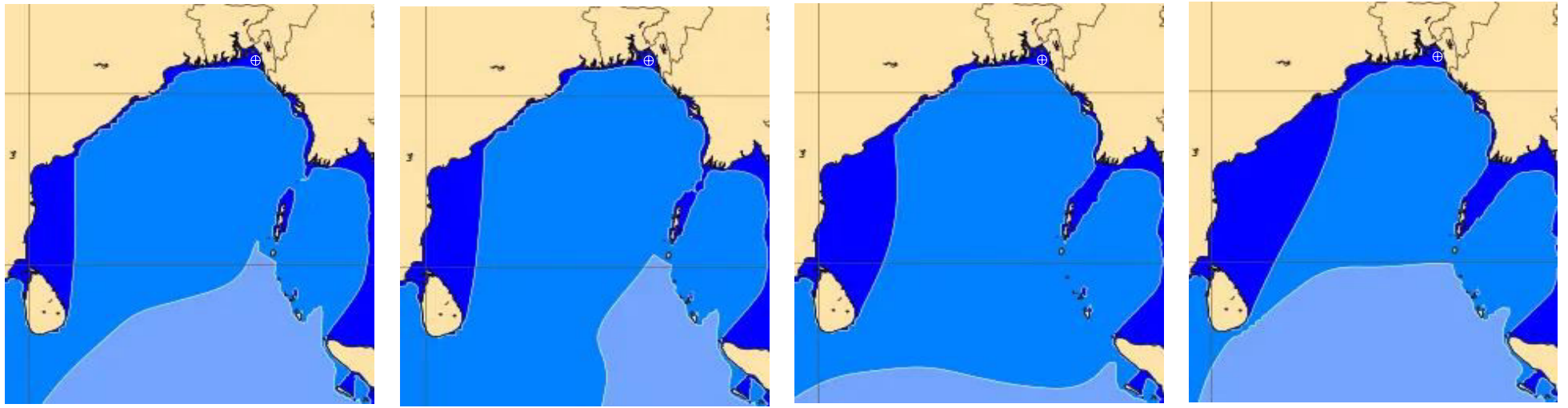
Date	Time	Max Wind Spd (kts)	Wind Direction	Wave Ht (m)	Sea State	Baro Pressure	Air Temp		Sea Surface Temp	Humidity (%)	Prob of Rain (%)	Sea State	Wave Ht (m)
							Max	Min					
16-05-24	0001	4	W	0.1	1	1010	35	26	30	81%	14% (0.0 mm)	0	0
	0600	3	N	0.1	1	1010			29	93%	12% (0.0 mm)	1	0 - 0.1
	1200	9	W	0.1	1	1009			30	72%	13% (0.0 mm)	2	0.1 - 0.5
	1800	12	WSW	0.2	2	1006			30	85%	12% (0.0 mm)	3	0.5 - 1.25
17-05-24	0001	10	SSW	0.2	2	1007	35	26	30	83%	15% (0.0 mm)	4	1.25 - 2.5
	0600	7	SSE	0.1	1	1008			29	96%	14% (0.0 mm)	5	2.5 - 4.0
	1200	9	SW	0.2	2	1009			30	70%	12% (0.0 mm)	6	4.0 - 6.0
	1800	13	SW	0.3	2	1005			30	82%	13% (0.0 mm)	7	6.0 - 9.0
18-05-24	0001	13	SSE	0.3	2	1006	35	26	29	84%	16% (0.0 mm)	8	9.0 - 14.0
	0600	11	S	0.2	2	1007			29	91%	12% (0.0 mm)	9	Over 14.0
	1200	11	SW	0.2	2	1007			30	73%	15% (0.0 mm)		
	1800	16	SW	0.3	2	1003			30	82%	14% (0.0 mm)		
19-05-24	0001	15	S	0.3	2	1005	35	26	29	85%	11% (0.0 mm)		
	0600	11	S	0.2	2	1005			29	94%	13% (0.0 mm)		
	1200	13	SW	0.3	2	1006			30	72%	10% (0.0 mm)		
	1800	15	SW	0.3	2	1004			30	86%	15% (0.0 mm)		

16 May 24 Thu (Probability 98%)

17 May 24 Fri (Probability 95%)

18 May 24 Sat (Probability 90%)

19 May 24 Sun (Probability 80%)



Significant wave height (m)

MARINE WEATHER FORECAST- NEAR AUTHORITY BUOY (Lat 22° 12'N, Long 091° 38'E)

DATE : 16 to 23 May 2024

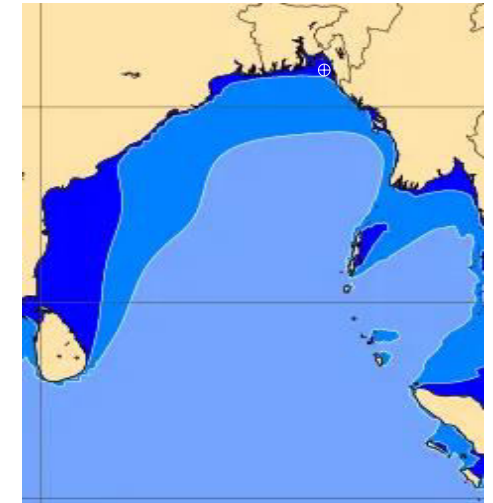
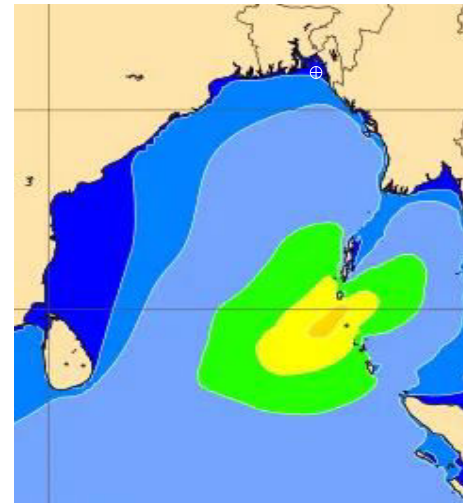
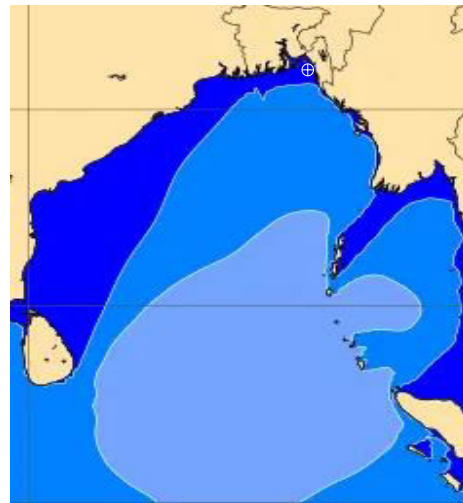
Date	Time	Max Wind Spd (kts)	Wind Direction	Wave Ht (m)	Sea State	Baro Pressure	Air Temp		Sea Surface Temp	Humidity (%)	Prob of Rain (%)	Sea State	Wave Ht (m)
							Max	Min					
20-05-24	0001	10	SSE	0.2	2	1004	35	26	29	83%	12% (0.0 mm)	0	0
	0600	8	SSE	0.1	1	1005			29	94%	14% (0.0 mm)	1	0 - 0.1
	1200	6	SW	0.1	1	1006			30	71%	13% (0.0 mm)	2	0.1 - 0.5
	1800	11	SW	0.2	2	1002			30	82%	16% (0.0 mm)	3	0.5 - 1.25
21-05-24	0001	14	SW	0.3	2	1005	35	26	30	83%	12% (0.0 mm)	4	1.25 - 2.5
	0600	5	S	0.1	1	1006			29	96%	15% (0.0 mm)	5	2.5 - 4.0
	1200	6	WSW	0.1	1	1006			30	70%	14% (0.0 mm)	6	4.0 - 6.0
	1800	3	W	0.1	1	1002			30	82%	10% (0.0 mm)	7	6.0 - 9.0
22-05-24	0001	6	SW	0.1	1	1005	35	26	29	85%	12% (0.0 mm)	8	9.0 - 14.0
	0600	7	ENE	0.1	1	1005			29	98%	15% (0.0 mm)	9	Over 14.0
	1200	5	WNW	0.1	1	1006			30	79%	14% (0.0 mm)		
	1800	9	WNW	0.1	1	1002			30	85%	11% (0.0 mm)		
23-05-24	0001	5	SSE	0.1	1	1004	35	26	29	84%	15% (0.0 mm)		
	0600	8	ESE	0.1	1	1005			29	98%	13% (0.0 mm)		
	1200	6	ESE	0.1	1	1006			30	76%	16% (0.0 mm)		
	1800	7	SSW	0.2	2	1002			30	84%	12% (0.0 mm)		

20 May 24 Mon (Probability 70%)

21 May 24 Tue (Probability 60%)

22 May 24 Wed (Probability 50%)

23 May 24 Thu (Probability 50%)



0 0.5 1 2 3 4 6 8 10 12 14 20



Significant wave height (m)

MARINE WEATHER FORECAST- 20 NM WEST OF ELEPHANT POINT (Lat 21° 10' N, Long 091° 42' E)

DATE : 16 to 23 May 2024

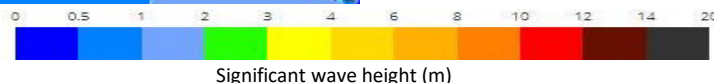
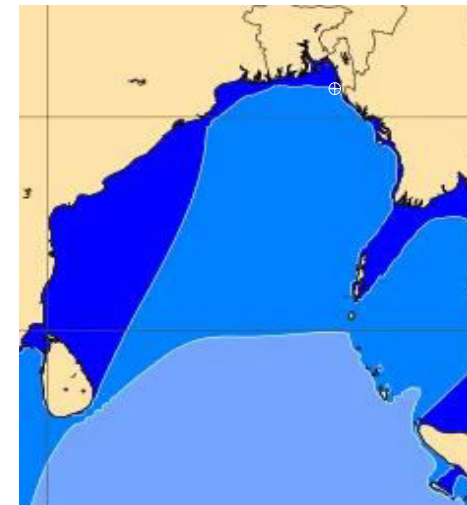
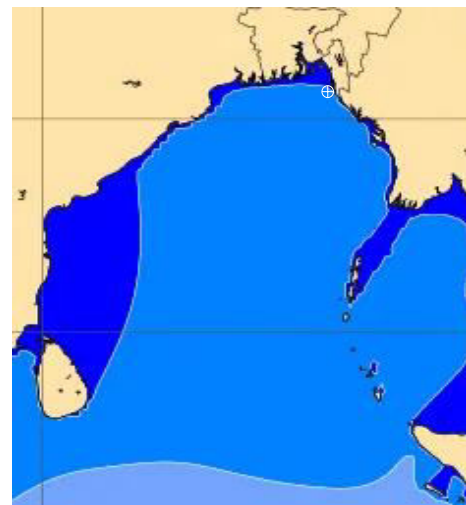
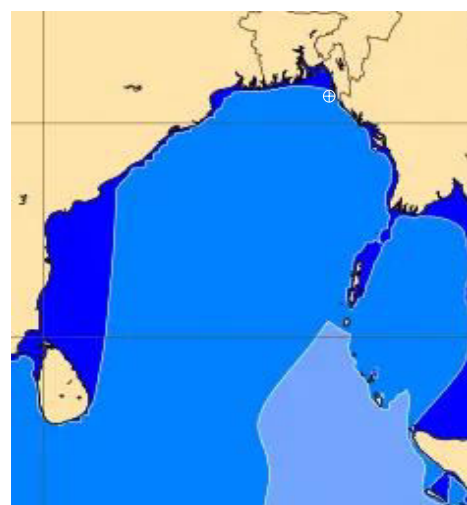
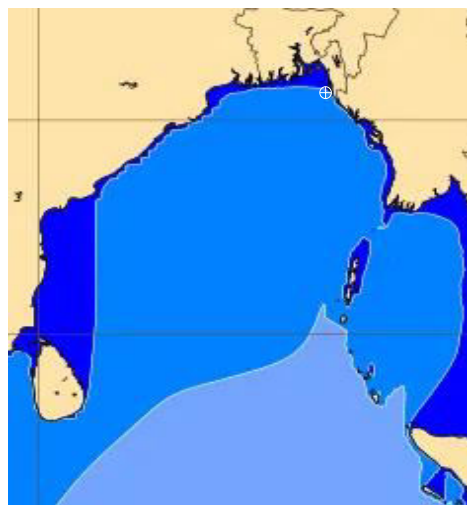
Date	Time	Max Wind Spd (kts)	Wind Direction	Wave Ht (m)	Sea State	Baro Pressure	Air Temp		Sea Surface Temp	Humidity (%)	Prob of Rain (%)	Sea State	Wave Ht (m)
							Max	Min					
16-05-24	0001	6	WNW	0.5	2	1010	35	26	30	84%	14% (0.0 mm)	0	0
	0600	6	NNW	0.5	2	1010			29	92%	13% (0.0 mm)	1	0 - 0.1
	1200	9	WNW	0.5	2	1011			30	73%	15% (0.0 mm)	2	0.1 - 0.5
	1800	14	W	0.6	3	1006			30	85%	14% (0.0 mm)	3	0.5 - 1.25
17-05-24	0001	7	WSW	0.7	3	1018	35	26	30	82%	12% (0.0 mm)	4	1.25 - 2.5
	0600	6	SW	0.7	3	1018			29	94%	13% (0.0 mm)	5	2.5 - 4.0
	1200	10	WSW	0.7	3	1019			30	73%	16% (0.0 mm)	6	4.0 - 6.0
	1800	13	WSW	0.8	3	1005			30	82%	12% (0.0 mm)	7	6.0 - 9.0
18-05-24	0001	8	SSW	0.8	3	1006	35	26	30	85%	14% (0.0 mm)	8	9.0 - 14.0
	0600	10	SSW	0.8	3	1007			29	94%	11% (0.0 mm)	9	Over 14.0
	1200	7	SW	0.9	3	1007			30	70%	15% (0.0 mm)		
	1800	17	WSW	0.9	3	1003			30	82%	11% (0.0 mm)		
19-05-24	0001	10	SSW	0.9	3	1005	35	26	30	85%	12% (0.0 mm)		
	0600	9	SSW	0.9	3	1005			29	94%	15% (0.0 mm)		
	1200	7	SW	0.9	3	1006			30	76%	14% (0.0 mm)		
	1800	15	WSW	0.9	3	1003			30	82%	12% (0.0 mm)		

16 May 24 Thu (Probability 98%)

17 May 24 Fri (Probability 95%)

18 May 24 Sat (Probability 90%)

19 May 24 Sun (Probability 80%)



Significant wave height (m)

MARINE WEATHER FORECAST- 20 NM WEST OF ELEPHANT POINT (Lat 21° 10' N, Long 091° 42' E)

DATE : 16 to 23 May 2024

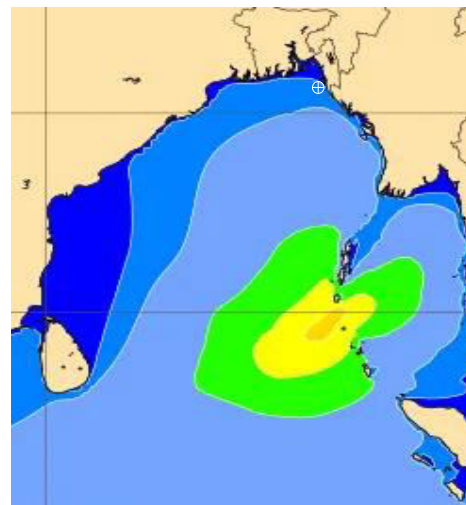
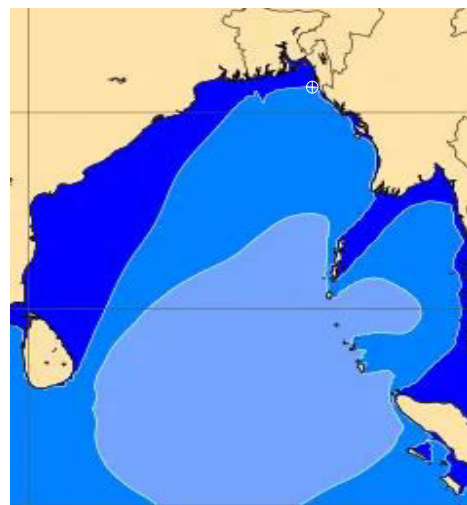
Date	Time	Max Wind Spd (kts)	Wind Direction	Wave Ht (m)	Sea State	Baro Pressure	Air Temp		Sea Surface Temp	Humidity (%)	Prob of Rain (%)	Sea State	Wave Ht (m)
							Max	Min					
20-05-24	0001	10	SSW	0.9	3	1004	35	26	30	81%	12% (0.0 mm)	0	0
	0600	8	SSW	0.9	3	1005			30	93%	15% (0.0 mm)	1	0 - 0.1
	1200	6	SW	0.9	3	1006			31	75%	14% (0.0 mm)	2	0.1 - 0.5
	1800	11	WSW	0.9	3	1002			30	82%	13% (0.0 mm)	3	0.5 - 1.25
21-05-24	0001	13	WSW	0.9	3	1006	35	26	30	84%	16% (0.0 mm)	4	1.25 - 2.5
	0600	5	SW	0.8	3	1006			30	91%	12% (0.0 mm)	5	2.5 - 4.0
	1200	6	W	0.8	3	1007			31	72%	14% (0.0 mm)	6	4.0 - 6.0
	1800	9	W	0.9	3	1002			30	80%	10% (0.0 mm)	7	6.0 - 9.0
22-05-24	0001	6	SW	0.8	3	1004	35	26	30	86%	12% (0.0 mm)	8	9.0 - 14.0
	0600	5	ENE	0.8	3	1005			30	92%	14% (0.0 mm)	9	Over 14.0
	1200	6	W	0.8	3	1005			31	74%	11% (0.0 mm)		
	1800	11	W	0.9	3	1002			30	81%	12% (0.0 mm)		
23-05-24	0001	5	WSW	0.8	3	1005	35	26	30	82%	15% (0.0 mm)		
	0600	12	WNW	0.9	3	1005			30	95%	13% (0.0 mm)		
	1200	10	SW	0.9	3	1006			31	74%	16% (0.0 mm)		
	1800	14	SSW	0.9	3	1003			30	82%	12% (0.0 mm)		

20 May 24 Mon (Probability 70%)

21 May 24 Tue (Probability 60%)

22 May 24 Wed (Probability 50%)

23 May 24 Thu (Probability 50%)



0 0.5 1 2 3 4 6 8 10 12 14 20



Significant wave height (m)

MARINE WEATHER FORECAST- 15 NM WEST OF ST. MARTIN'S LIGHT HOUSE (Lat 20° 37' N, Long 092° 03' E)

DATE : 16 to 23 May 2024

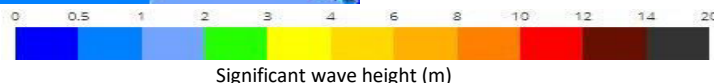
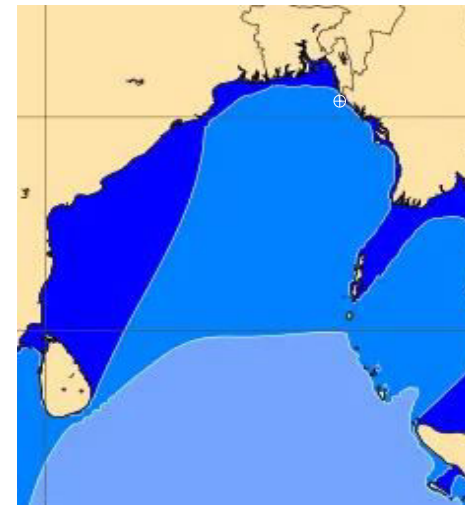
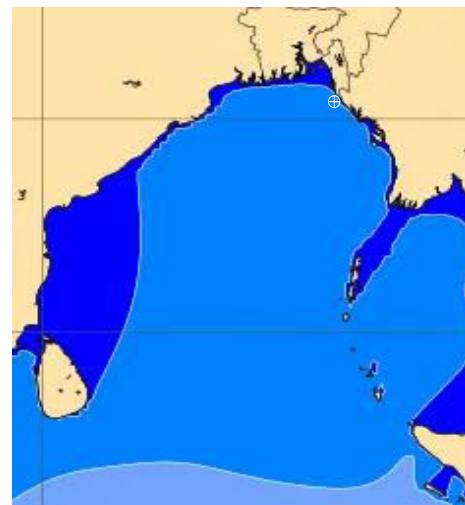
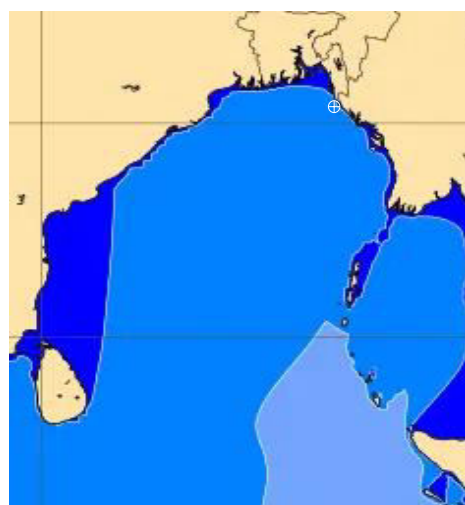
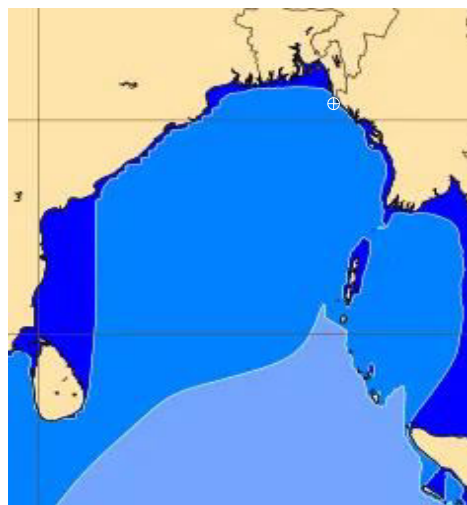
Date	Time	Max Wind Spd (kts)	Wind Direction	Wave Ht (m)	Sea State	Baro Pressure	Air Temp		Sea Surface Temp	Humidity (%)	Prob of Rain(%)	Sea State	Wave Ht (m)
							Max	Min					
16-05-24	0001	7	NW	0.7	3	1011	35	26	30	83%	13% (0.0 mm)	0	0
	0600	8	NW	0.7	3	1009			30	95%	15% (0.0 mm)	1	0 - 0.1
	1200	8	WNW	0.8	3	1010			31	76%	16% (0.0 mm)	2	0.1 - 0.5
	1800	14	WNW	0.9	3	1006			31	84%	14% (0.0 mm)	3	0.5 - 1.25
17-05-24	0001	9	W	0.9	3	1009	35	26	30	80%	12% (0.0 mm)	4	1.25 - 2.5
	0600	7	W	0.8	3	1008			30	92%	14% (0.0 mm)	5	2.5 - 4.0
	1200	10	W	0.9	3	1009			31	74%	12% (0.0 mm)	6	4.0 - 6.0
	1800	11	NW	0.9	3	1006			31	81%	14% (0.0 mm)	7	6.0 - 9.0
18-05-24	0001	7	W	0.8	3	1008	35	26	30	82%	13% (0.0 mm)	8	9.0 - 14.0
	0600	9	SW	0.9	3	1006			30	93%	12% (0.0 mm)	9	Over 14.0
	1200	7	W	0.8	3	1008			31	75%	14% (0.0 mm)		
	1800	15	W	0.9	3	1003			31	82%	11% (0.0 mm)		
19-05-24	0001	9	WSW	0.9	3	1006	35	26	30	84%	12% (0.0 mm)		
	0600	7	SW	0.8	3	1005			30	93%	14% (0.0 mm)		
	1200	8	SW	0.8	3	1006			31	75%	15% (0.0 mm)		
	1800	12	WSW	0.9	3	1004			31	82%	16% (0.0 mm)		

16 May 24 Thu (Probability 98%)

17 May 24 Fri (Probability 95%)

18 May 24 Sat (Probability 90%)

19 May 24 Sun (Probability 80%)



Significant wave height (m)

MARINE WEATHER FORECAST- 15 NM WEST OF ST. MARTIN'S LIGHT HOUSE (Lat 20° 37' N, Long 092° 03' E)

DATE : 16 to 23 May 2024

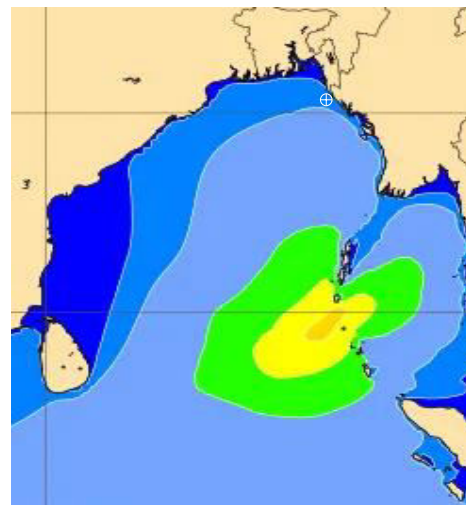
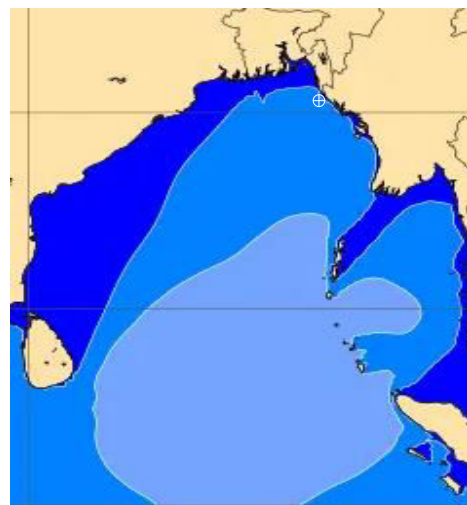
Date	Time	Max Wind Spd (kts)	Wind Direction	Wave Ht (m)	Sea State	Baro Pressure	Air Temp		Sea Surface Temp	Humidity (%)	Prob of Rain (%)	Sea State	Wave Ht (m)
							Max	Min					
20-05-24	0001	8	SW	1.1	3	1005	35	26	30	86%	13% (0.0 mm)	0	0
	0600	9	WSW	1.0	3	1004			30	94%	14% (0.0 mm)	1	0 - 0.1
	1200	6	WSW	1.0	3	1006			31	72%	12% (0.0 mm)	2	0.1 - 0.5
	1800	15	WSW	1.1	3	1002			31	83%	15% (0.0 mm)	3	0.5 - 1.25
21-05-24	0001	11	SW	1.1	3	1004	35	26	30	85%	14% (0.0 mm)	4	1.25 - 2.5
	0600	10	W	1.1	3	1005			30	91%	13% (0.0 mm)	5	2.5 - 4.0
	1200	5	ESE	1.0	3	1006			31	76%	15% (0.0 mm)	6	4.0 - 6.0
	1800	10	WSW	1.1	3	1003			31	82%	14% (0.0 mm)	7	6.0 - 9.0
22-05-24	0001	10	W	1.1	3	1005	35	26	30	83%	16% (0.0 mm)	8	9.0 - 14.0
	0600	6	W	1.0	3	1004			30	96%	10% (0.0 mm)	9	Over 14.0
	1200	5	NNW	1.0	3	1005			31	75%	12% (0.0 mm)		
	1800	10	WSW	1.1	3	1003			31	83%	14% (0.0 mm)		
23-05-24	0001	6	NW	1.0	3	1004	35	26	30	85%	15% (0.0 mm)		
	0600	5	WSW	1.0	3	1004			30	94%	14% (0.0 mm)		
	1200	8	SW	1.0	3	1006			31	76%	12% (0.0 mm)		
	1800	13	WSW	1.1	3	1003			31	82%	15% (0.0 mm)		

20 May 24 Mon (Probability 70%)

21 May 24 Tue (Probability 60%)

22 May 24 Wed (Probability 50%)

23 May 24 Thu (Probability 50%)



0 0.5 1 2 3 4 6 8 10 12 14 20



Significant wave height (m)

MARINE WEATHER FORECAST- 40 NM ESE OF PAYRA FAIRWAY (Lat 21° 07' N, Long 090° 45' E)

DATE : 16 to 23 May 2024

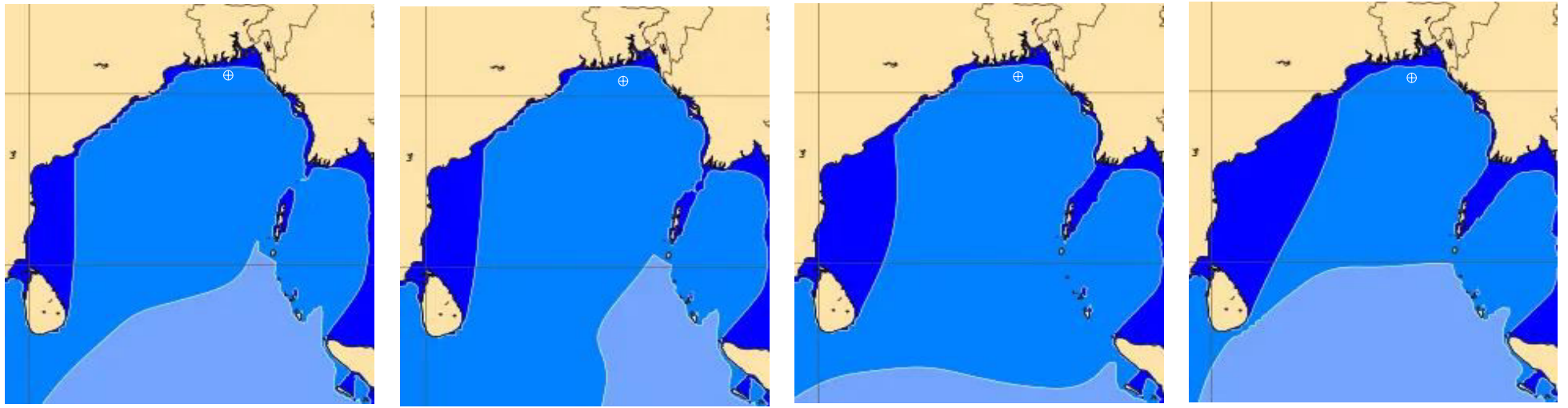
Date	Time	Max Wind Spd (kts)	Wind Direction	Wave Ht (m)	Sea State	Baro Pressure	Air Temp		Sea Surface Temp	Humidity (%)	Prob of Rain (%)	Sea State	Wave Ht (m)
							Max	Min					
16-05-24	0001	9	W	0.7	3	1010	36	26	30	81%	14% (0.0 mm)	0	0
	0600	6	WNW	0.7	3	1010			30	95%	12% (0.0 mm)	1	0 - 0.1
	1200	7	WNW	0.7	3	1010			30	72%	15% (0.0 mm)	2	0.1 - 0.5
	1800	12	WSW	0.9	3	1007			30	83%	13% (0.0 mm)	3	0.5 - 1.25
17-05-24	0001	15	WSW	1.0	3	1007	36	26	30	86%	15% (0.0 mm)	4	1.25 - 2.5
	0600	11	WSW	1.0	3	1008			30	93%	11% (0.0 mm)	5	2.5 - 4.0
	1200	11	WSW	1.0	3	1009			30	74%	10% (0.0 mm)	6	4.0 - 6.0
	1800	12	WSW	1.1	3	1006			30	85%	12% (0.0 mm)	7	6.0 - 9.0
18-05-24	0001	14	SW	1.2	3	1006	36	26	30	83%	15% (0.0 mm)	8	9.0 - 14.0
	0600	14	SW	1.3	4	1006			30	92%	14% (0.0 mm)	9	Over 14.0
	1200	13	WSW	1.4	4	1007			30	74%	11% (0.0 mm)		
	1800	15	SW	1.4	4	1004			30	81%	12% (0.0 mm)		
19-05-24	0001	16	SW	1.4	4	1005	36	26	30	82%	15% (0.0 mm)		
	0600	13	SW	1.4	4	1005			30	91%	11% (0.0 mm)		
	1200	12	SSW	1.3	4	1006			30	75%	16% (0.0 mm)		
	1800	15	WSW	1.4	4	1004			30	83%	13% (0.0 mm)		

16 May 24 Thu (Probability 98%)

17 May 24 Fri (Probability 95%)

18 May 24 Sat (Probability 90%)

19 May 24 Sun (Probability 80%)



MARINE WEATHER FORECAST- 40 NM ESE OF PAYRA FAIRWAY (Lat 21° 07' N, Long 090° 45' E)

DATE : 16 to 23 May 2024

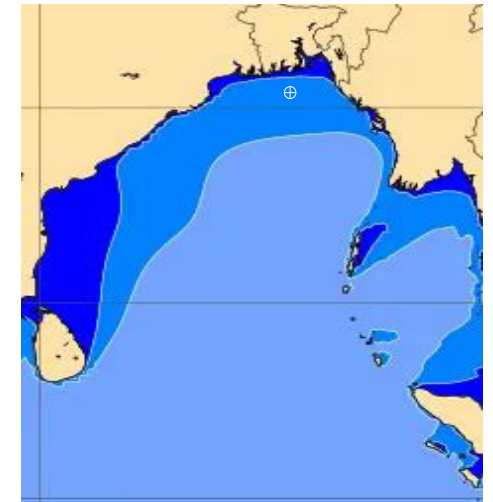
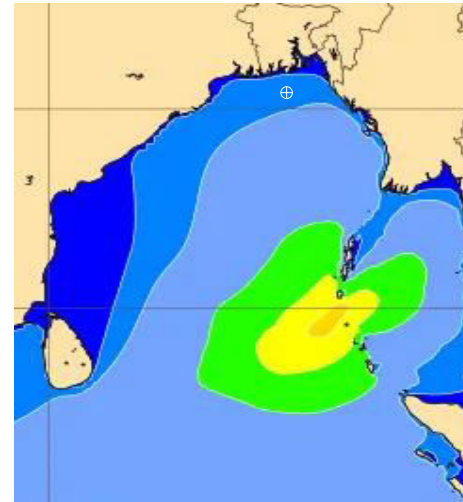
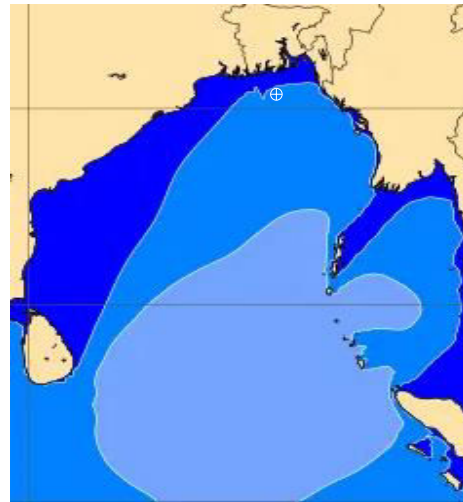
Date	Time	Max Wind Spd (kts)	Wind Direction	Wave Ht (m)	Sea State	Baro Pressure	Air Temp		Sea Surface Temp	Humidity (%)	Prob of Rain (%)	Sea State	Wave Ht (m)
							Max	Min					
20-05-24	0001	17	SSW	1.2	3	1003	36	26	30	85%	12% (0.0 mm)	0	0
	0600	12	SSW	1.3	4	1004			30	92%	14% (0.0 mm)	1	0 - 0.1
	1200	9	SSW	1.3	4	1006			31	73%	13% (0.0 mm)	2	0.1 - 0.5
	1800	12	SSW	1.2	3	1002			30	85%	16% (0.0 mm)	3	0.5 - 1.25
21-05-24	0001	16	WSW	1.3	4	1005	36	26	30	84%	10% (0.0 mm)	4	1.25 - 2.5
	0600	8	SW	1.3	4	1005			30	96%	12% (0.0 mm)	5	2.5 - 4.0
	1200	5	SW	1.2	3	1006			31	72%	14% (0.0 mm)	6	4.0 - 6.0
	1800	8	WSW	1.1	3	1003			30	84%	12% (0.0 mm)	7	6.0 - 9.0
22-05-24	0001	12	SW	1.1	3	1004	36	26	30	83%	13% (0.0 mm)	8	9.0 - 14.0
	0600	6	SW	1.1	3	1004			31	96%	12% (0.0 mm)	9	Over 14.0
	1200	5	SSE	1.0	3	1005			30	74%	11% (0.0 mm)		
	1800	7	SW	1.0	3	1002			30	85%	12% (0.0 mm)		
23-05-24	0001	9	WSW	1.0	3	1004	36	26	30	82%	15% (0.0 mm)		
	0600	8	SSW	1.0	3	1004			30	94%	14% (0.0 mm)		
	1200	6	SW	1.1	3	1005			31	76%	10% (0.0 mm)		
	1800	12	SSW	1.1	3	1002			30	82%	13% (0.0 mm)		

20 May 24 Mon (Probability 70%)

21 May 24 Tue (Probability 60%)

22 May 24 Wed (Probability 50%)

23 May 24 Thu (Probability 50%)



0 0.5 1 2 3 4 6 8 10 12 14 20



Significant wave height (m)

MARINE WEATHER FORECAST- 10 NM SOUTH OF MONGLA FAIRWAY (Lat 21° 16' N, Long 089° 34' E)

DATE : 16 to 23 May 2024

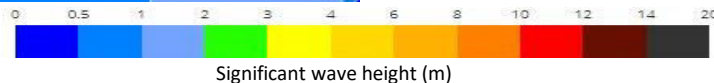
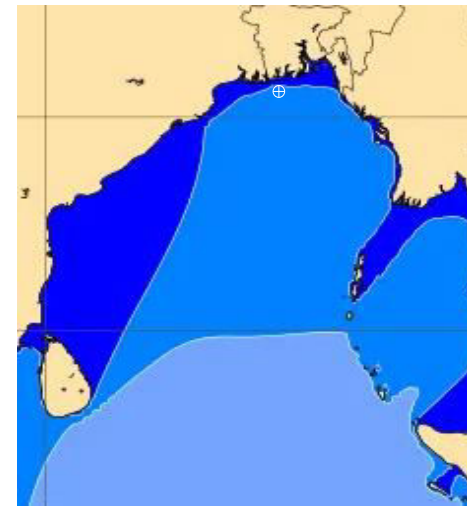
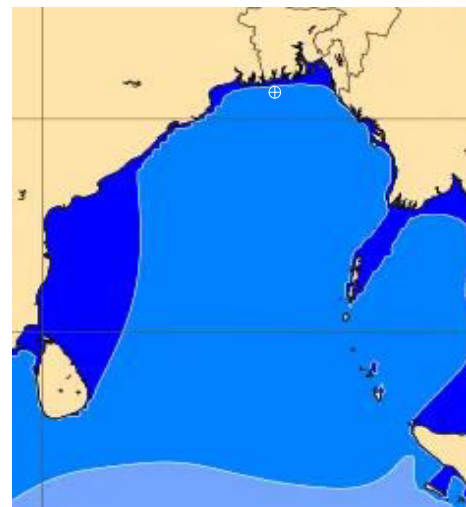
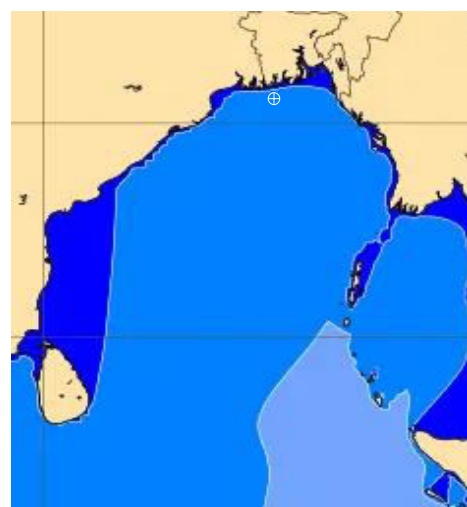
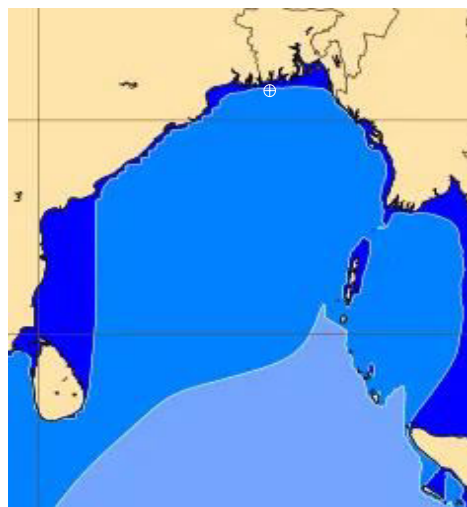
Date	Time	Max Wind Spd (kts)	Wind Direction	Wave Ht (m)	Sea State	Baro Pressure	Air Temp		Sea Surface Temp	Humidity (%)	Prob of Rain (%)	Sea State	Wave Ht (m)
							Max	Min					
16-05-24	0001	9	SW	0.6	3	1010	36	26	30	81%	14% (0.0 mm)	0	0
	0600	9	WSW	0.6	3	1010			30	93%	12% (0.0 mm)	1	0 - 0.1
	1200	8	WSW	0.7	3	1011			30	72%	13% (0.0 mm)	2	0.1 - 0.5
	1800	13	W	0.7	3	1007			30	85%	15% (0.0 mm)	3	0.5 - 1.25
17-05-24	0001	18	SW	1.0	3	1007	36	26	30	84%	11% (0.0 mm)	4	1.25 - 2.5
	0600	17	SW	1.1	3	1008			30	93%	12% (0.0 mm)	5	2.5 - 4.0
	1200	15	SW	1.2	3	1006			30	75%	15% (0.0 mm)	6	4.0 - 6.0
	1800	15	SSW	1.1	3	1005			30	84%	13% (0.0 mm)	7	6.0 - 9.0
18-05-24	0001	20	SW	1.3	4	1005	36	26	30	81%	15% (0.0 mm)	8	9.0 - 14.0
	0600	21	SW	1.6	4	1006			30	92%	14% (0.0 mm)	9	Over 14.0
	1200	17	SW	1.5	4	1005			30	73%	11% (0.0 mm)		
	1800	18	SSW	1.5	4	1004			30	85%	12% (0.0 mm)		
19-05-24	0001	23	SW	1.6	4	1004	36	26	30	82%	13% (0.0 mm)		
	0600	19	SW	1.5	4	1004			30	94%	14% (0.0 mm)		
	1200	15	SW	1.6	4	1005			30	73%	12% (0.0 mm)		
	1800	20	SSW	1.6	4	1003			30	85%	16% (0.0 mm)		

16 May 24 Thu (Probability 98%)

17 May 24 Fri (Probability 95%)

18 May 24 Sat (Probability 90%)

19 May 24 Sun (Probability 80%)



Significant wave height (m)

MARINE WEATHER FORECAST- 10 NM SOUTH OF MONGLA FAIRWAY (Lat 21° 16' N, Long 089° 34' E)

DATE : 16 to 23 May 2024

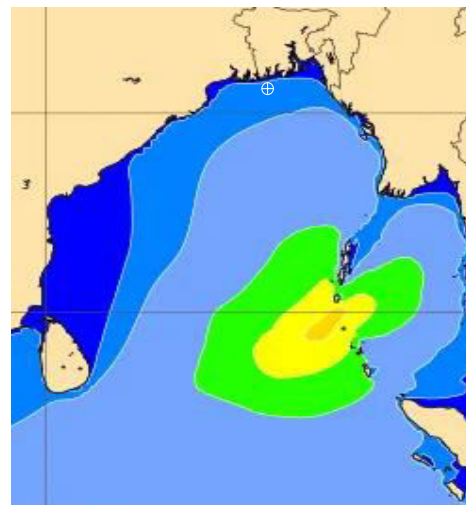
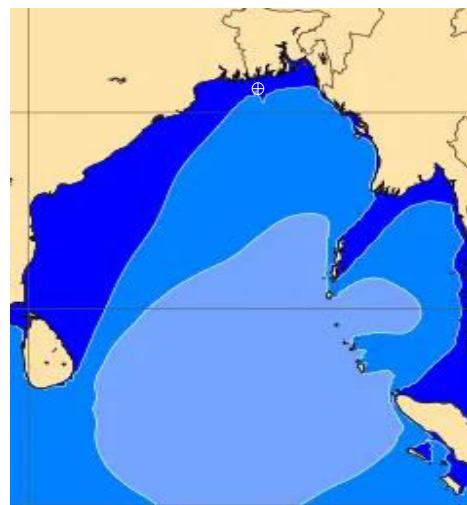
Date	Time	Max Wind Spd (kts)	W8nd Direction	Wave Ht (m)	Sea State	Baro Pressure	Air Temp		Sea Surface Temp	Humidity (%)	Prob of Rain (%)	Sea State	Wave Ht (m)
							Max	Min					
20-05-24	0001	24	SW	1.6	4	1003	36	26	30	82%	13% (0.0 mm)	0	0
	0600	18	SSW	1.6	4	1003			30	93%	15% (0.0 mm)	1	0 - 0.1
	1200	12	SSW	1.5	4	1005			30	74%	12% (0.0 mm)	2	0.1 - 0.5
	1800	17	SW	1.3	4	1002			30	82%	14% (0.0 mm)	3	0.5 - 1.25
21-05-24	0001	19	SSW	1.5	4	1004	36	26	30	85%	12% (0.0 mm)	4	1.25 - 2.5
	0600	14	SSW	1.4	4	1004			30	91%	15% (0.0 mm)	5	2.5 - 4.0
	1200	9	SW	1.3	4	1005			30	73%	16% (0.0 mm)	6	4.0 - 6.0
	1800	7	SSW	1.2	3	1003			30	85%	13% (0.0 mm)	7	6.0 - 9.0
22-05-24	0001	15	SSW	1.2	3	1004	36	26	30	80%	15% (0.0 mm)	8	9.0 - 14.0
	0600	12	SSW	1.1	3	1004			30	92%	14% (0.0 mm)	9	Over 14.0
	1200	7	S	1.1	3	1005			30	74%	12% (0.0 mm)		
	1800	6	SSW	1.1	3	1002			30	81%	15% (0.0 mm)		
23-05-24	0001	14	SSW	1.0	3	1004	36	26	30	82%	16% (0.0 mm)		
	0600	10	SSW	1.0	3	1005			30	93%	12% (0.0 mm)		
	1200	13	SW	1.1	3	1004			30	75%	15% (0.0 mm)		
	1800	15	SSW	1.1	3	1002			30	82%	14% (0.0 mm)		

20 May 24 Mon (Probability 70%)

21 May 24 Tue (Probability 60%)

22 May 24 Wed (Probability 50%)

23 May 24 Thu (Probability 50%)



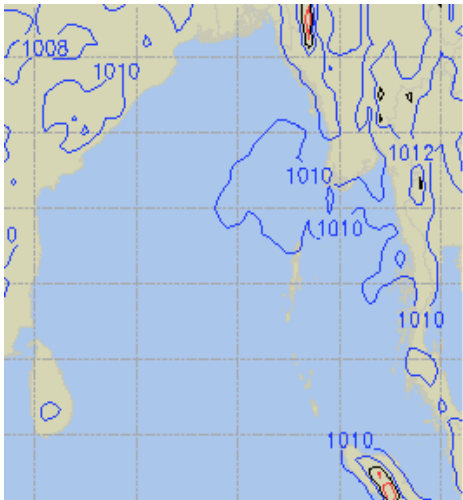
0 0.5 1 2 3 4 6 8 10 12 14 20



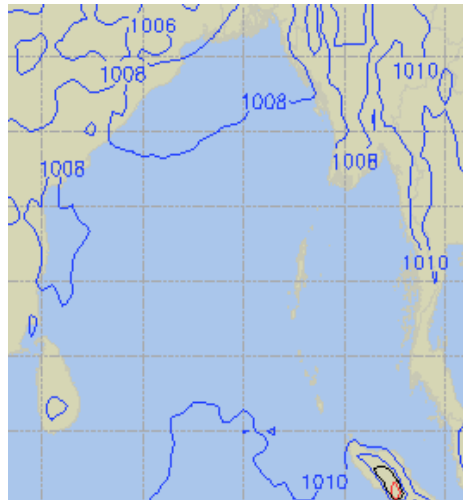
Significant wave height (m)

PREDICTED SURFACE PRESSURE FORECAST (16 to 22 May 2024)

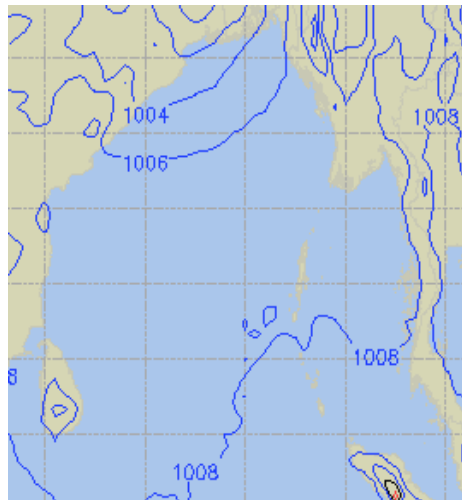
16 May 24 Thu (Probability 98%)



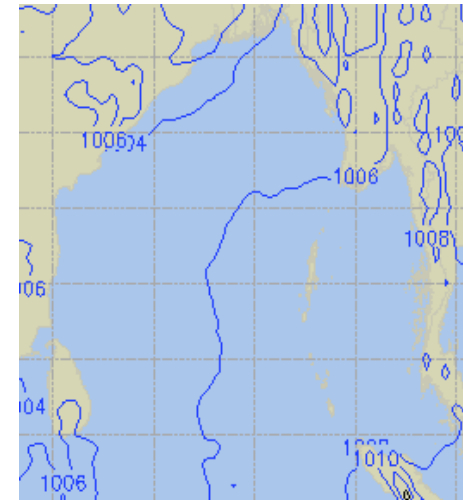
17 May 24 Fri (Probability 95%)



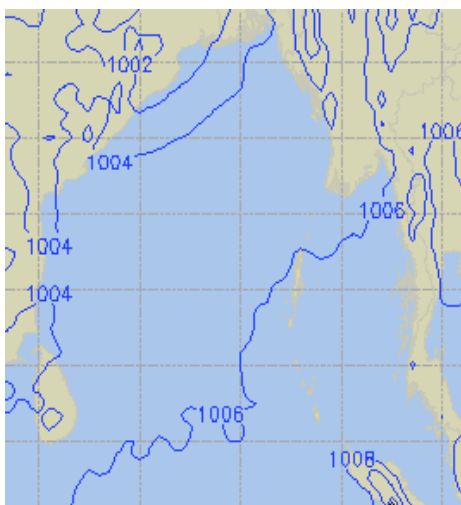
18 May 24 Sat (Probability 90%)



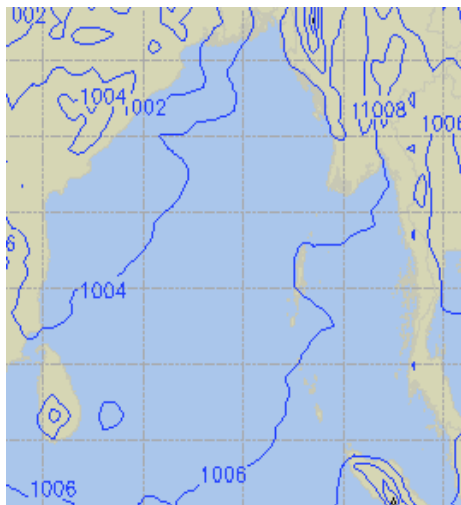
19 May 24 Sun (Probability 80%)



20 May 24 Mon (Probability 70%)



21 May 24 Tue (Probability 60%)



22 May 24 Wed (Probability 60%)

