



**SUMMARY OF MARINE WEATHER FORECAST**  
**COASTAL AREA OF BANGLADESH**  
**DATE: 16 to 23 Feb 2025**



Fleet forecast	Seasonal low lies over south Bay, extending its trough to North Bay.
Wind direction, speed	West/South-westerly 7 kts, (Temporary gusting up to 17 kts).
Wave height & sea state	Wave height: 0.1 to 0.9 m (Sea state:1 to 3).
Sea surface temperature	21°C - 27°C (May remain nearly unchanged).
Baro pressure	1010-1015 mb.
Rainfall	Temporary partly cloudy sky over Bay of Bengal & adjoining area.
Fog	Light to moderate fog may occur over the coastal area during early morning.

**Outlook for 16 to 23 Feb 2025:** Weather may remain dry with temporary partly cloudy sky. Night and day temperature may rise.



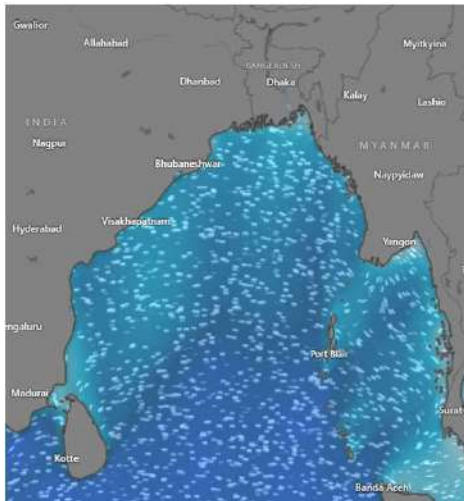
# MARINE WEATHER FORECAST (16 to 23 Feb 2025)

## PATENGA POINT (22° 12' N, 091° 38' E)

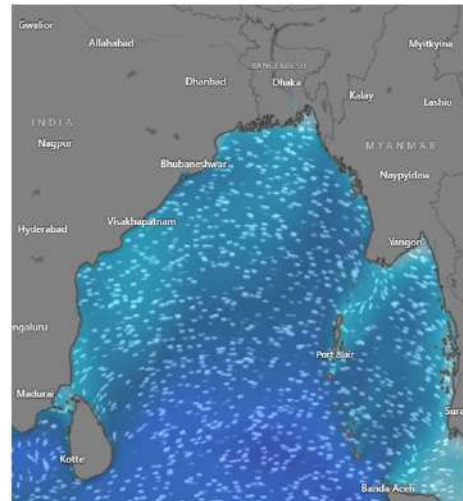


Date	Time	Air Temp (°C)		Sea Surface Temp (°C)	Baro Pressure (mbar)	Wind Direction	Wind Spd (kts)		Wave Ht (m)	Sea State	Humidity (%)	Prob of Rain (%)	Amount of Rain (mm)
		Max	Min				Gusting	Avg					
16-02-25 (Sunday)	0001	29	18	22	1012	NNW	7	4	0.1	1	92	6	0.0
	0600			21	1015	E	8	5	0.1	1	95	8	0.0
	1200			25	1012	W	8	5	0.1	1	54	2	0.0
	1800			23	1013	W	9	2	0.1	1	73	4	0.0
17-02-25 (Monday)	0001	29	18	22	1012	SSW	7	3	0.1	1	91	7	0.0
	0600			21	1015	NNE	7	3	0.1	1	96	6	0.0
	1200			25	1012	NW	17	4	0.1	1	53	2	0.0
	1800			23	1013	NW	11	7	0.2	2	74	6	0.0
18-02-25 (Tuesday)	0001	29	18	23	1012	W	9	4	0.2	2	92	7	0.0
	0600			22	1015	NNE	7	4	0.1	1	94	6	0.0
	1200			26	1012	SW	9	5	0.1	1	54	2	0.0
	1800			24	1013	SSW	10	5	0.2	2	72	4	0.0
19-02-25 (Wednesday)	0001	29	18	23	1012	W	6	4	0.1	1	93	8	0.0
	0600			22	1015	E	7	4	0.1	1	95	9	0.0
	1200			26	1012	W	10	6	0.1	1	51	2	0.0
	1800			24	1013	W	11	5	0.1	1	76	5	0.0

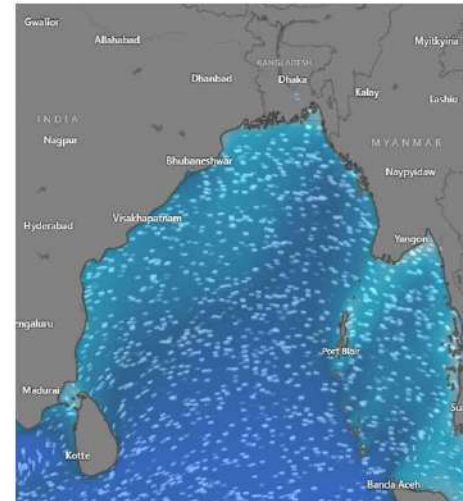
**16 Feb 2025**



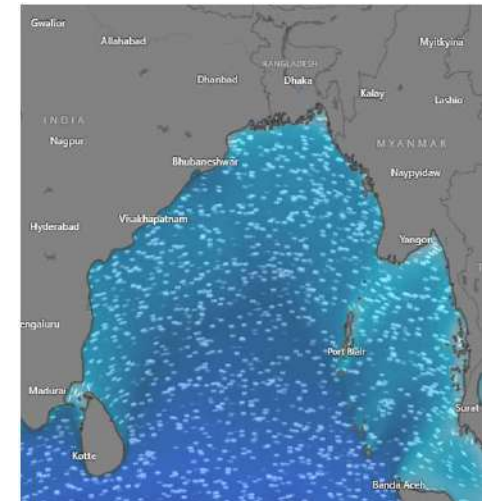
**17 Feb 2025**



**18 Feb 2025**



**19 Feb 2025**



Significant wave height (m)



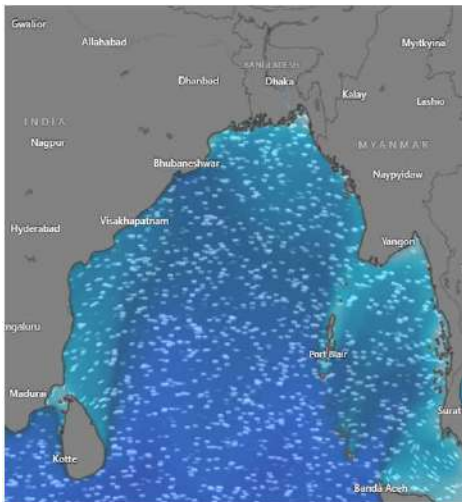
# MARINE WEATHER FORECAST (16 to 23 Feb 2025)

## PATENGA POINT (22° 12' N, 091° 38' E)

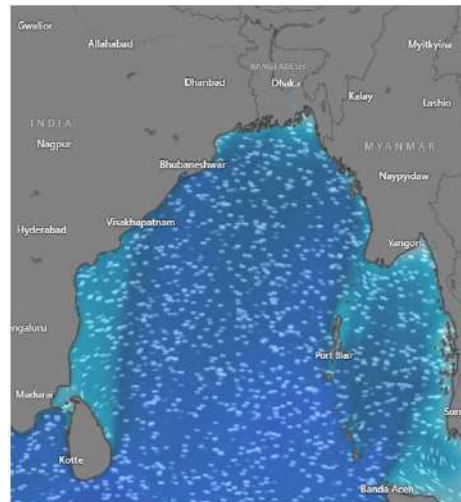


Date	Time	Air Temp (°C)		Sea Surface Temp (°C)	Baro Pressure (mbar)	Wind Direction	Wind Spd (kts)		Wave Ht (m)	Sea State	Humidity (%)	Prob of Rain (%)	Amount of Rain (mm)
		Max	Min				Gusting	Avg					
20-02-25 (Thursday)	0001	29	18	23	1012	SW	5	2	0.1	1	92	6	0.0
	0600			22	1015	NNE	6	3	0.1	1	95	9	0.0
	1200			26	1012	W	11	7	0.1	1	61	2	0.0
	1800			24	1013	W	10	5	0.2	2	74	7	0.0
21-02-25 (Friday)	0001	29	18	23	1012	W	8	5	0.2	2	91	6	0.0
	0600			22	1015	NNE	5	2	0.1	1	96	9	0.0
	1200			26	1012	W	10	7	0.1	1	62	2	0.0
	1800			24	1013	SW	11	6	0.2	2	76	5	0.0
22-02-25 (Saturday)	0001	29	18	24	1012	NNW	9	4	0.1	1	92	7	0.0
	0600			22	1015	NNE	11	3	0.1	1	94	9	0.0
	1200			27	1012	W	14	8	0.2	2	60	2	0.0
	1800			25	1013	NNW	9	6	0.2	2	75	5	0.0
23-02-25 (Sunday)	0001	29	18	24	1012	NNW	12	6	0.2	2	91	8	0.0
	0600			23	1015	NNE	8	3	0.1	1	96	9	0.0
	1200			27	1012	NNW	9	5	0.2	2	63	2	0.0
	1800			25	1013	NNW	12	6	0.1	1	75	5	0.0

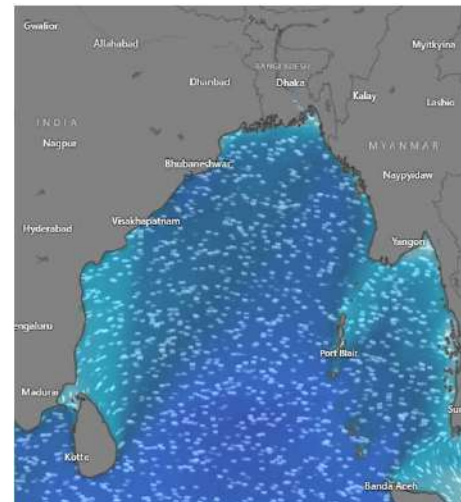
**20 Feb 2025**



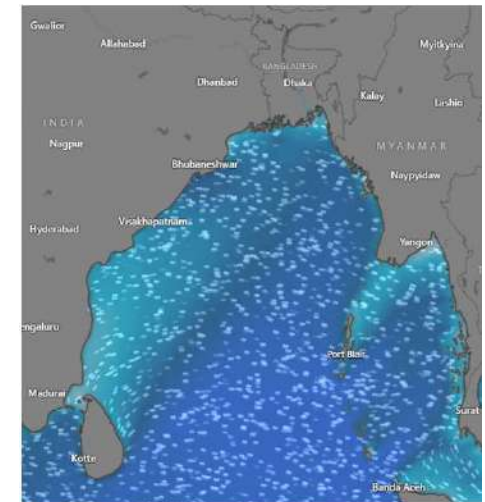
**21 Feb 2025**



**22 Feb 2025**



**23 Feb 2025**



Significant wave height (m)





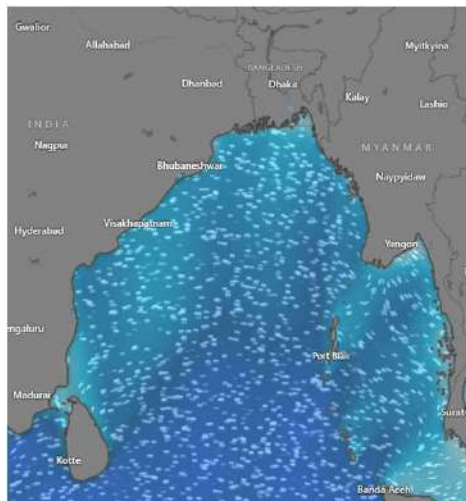
# MARINE WEATHER FORECAST (16 to 23 Feb 2025)

## ABEAM TO KUTUBDIA (21° 51' N, 091° 40' E)

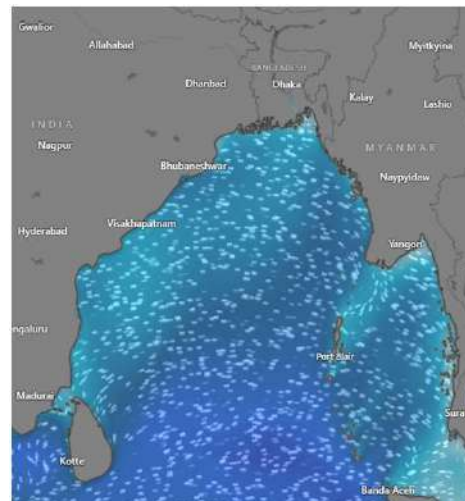


Date	Time	Air Temp (°C)		Sea Surface Temp (°C)	Baro Pressure (mbar)	Wind Direction	Wind Spd (kts)		Wave Ht (m)	Sea State	Humidity (%)	Prob of Rain (%)	Amount of Rain (mm)
		Max	Min				Gusting	Avg					
16-02-25 (Sunday)	0001	29	18	23	1012	W	9	4	0.2	2	94	6	0.0
	0600			22	1015	E	10	5	0.2	2	96	8	0.0
	1200			25	1012	NNW	8	3	0.2	2	67	2	0.0
	1800			24	1013	NW	4	2	0.2	2	75	4	0.0
17-02-25 (Monday)	0001	29	18	23	1012	SSW	4	2	0.2	2	93	7	0.0
	0600			22	1015	N	5	2	0.2	2	95	8	0.0
	1200			25	1012	N	9	5	0.3	2	66	2	0.0
	1800			24	1013	NW	10	8	0.2	2	74	5	0.0
18-02-25 (Tuesday)	0001	29	18	23	1012	NW	10	6	0.3	2	95	7	0.0
	0600			22	1015	NNE	9	6	0.2	2	97	8	0.0
	1200			25	1012	W	6	2	0.2	2	64	2	0.0
	1800			24	1013	SW	7	5	0.2	2	75	5	0.0
19-02-25 (Wednesday)	0001	29	18	23	1012	W	8	3	0.3	2	92	8	0.0
	0600			22	1015	E	5	3	0.3	2	96	9	0.0
	1200			25	1012	NW	6	4	0.2	2	65	2	0.0
	1800			24	1013	SW	9	6	0.2	2	73	6	0.0

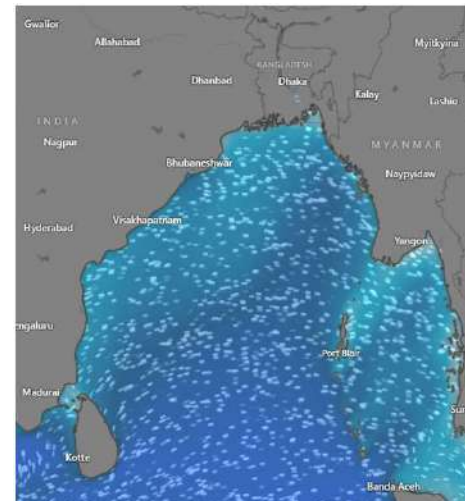
**16 Feb 2025**



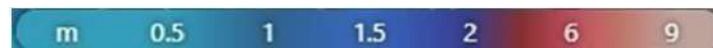
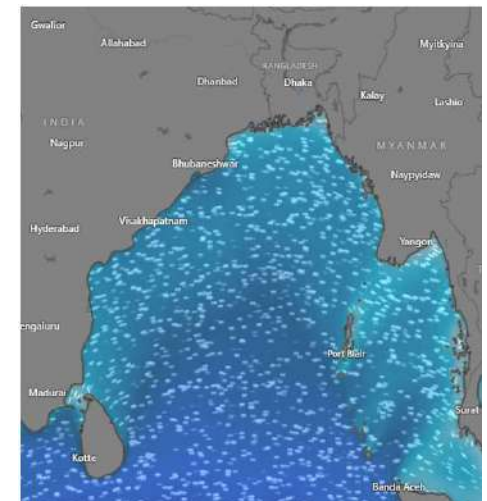
**17 Feb 2025**



**18 Feb 2025**



**19 Feb 2025**



Significant wave height (m)



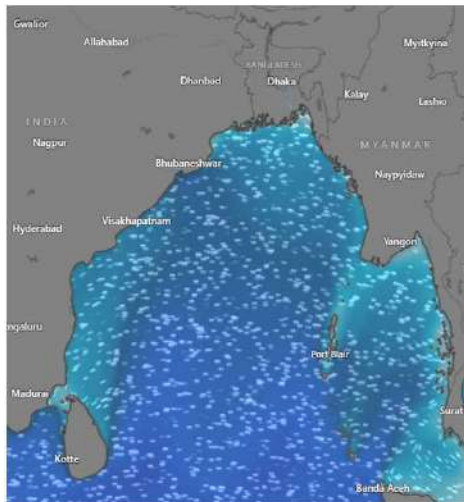
# MARINE WEATHER FORECAST (16 to 23 Feb 2025)

## ABEAM TO KUTUBDIA (21° 51' N, 091° 40' E)

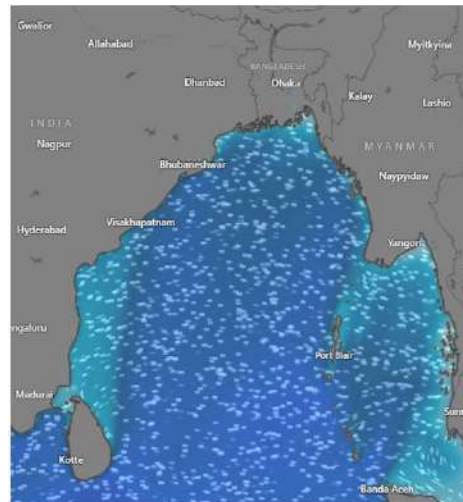


Date	Time	Air Temp (°C)		Sea Surface Temp (°C)	Baro Pressure (mbar)	Wind Direction	Wind Spd (kts)		Wave Ht (m)	Sea State	Humidity (%)	Prob of Rain (%)	Amount of Rain (mm)
		Max	Min				Gusting	Avg					
20-02-25 (Thursday)	0001	29	18	23	1012	W	7	5	0.2	2	93	8	0.0
	0600			22	1014	NNE	10	7	0.2	2	96	9	0.0
	1200			25	1011	NNW	7	5	0.3	2	67	2	0.0
	1800			24	1013	W	9	6	0.3	2	71	7	0.0
21-02-25 (Friday)	0001	29	18	23	1012	W	10	7	0.3	2	94	6	0.0
	0600			22	1014	NNE	9	6	0.3	2	96	8	0.0
	1200			25	1011	NNW	7	5	0.3	2	67	2	0.0
	1800			24	1013	W	9	7	0.3	2	73	5	0.0
22-02-25 (Saturday)	0001	29	18	23	1012	W	10	7	0.3	2	94	6	0.0
	0600			22	1014	NNE	9	5	0.3	2	96	8	0.0
	1200			25	1011	NNW	8	6	0.3	2	67	2	0.0
	1800			24	1013	NNW	11	6	0.4	2	75	5	0.0
23-02-25 (Sunday)	0001	29	18	23	1012	NNW	12	10	0.4	2	93	7	0.0
	0600			22	1014	NNE	14	4	0.3	2	95	9	0.0
	1200			25	1011	NNW	9	6	0.3	2	62	2	0.0
	1800			24	1013	NNW	10	8	0.3	2	76	5	0.0

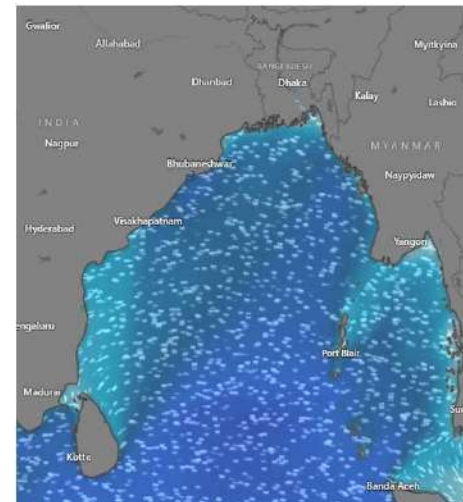
**20 Feb 2025**



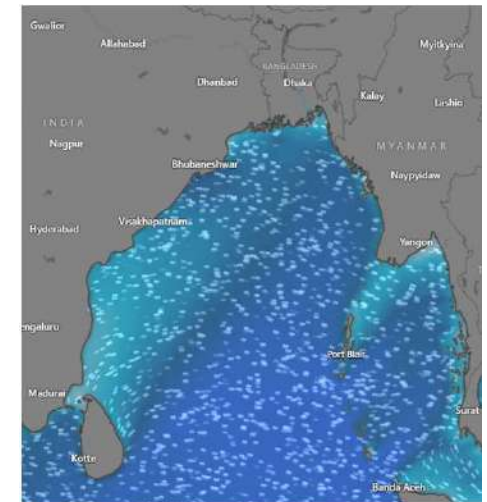
**21 Feb 2025**



**22 Feb 2025**



**23 Feb 2025**



Significant wave height (m)



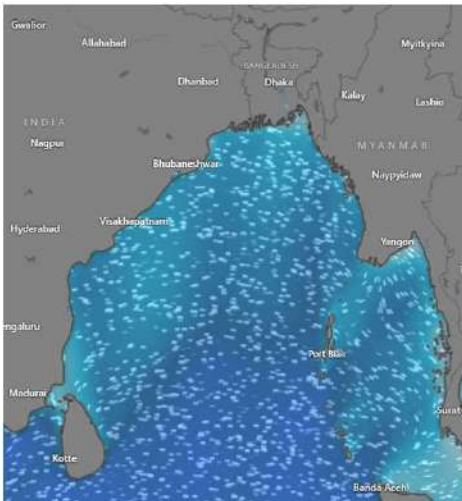


# MARINE WEATHER FORECAST (16 to 23 Feb 2025) ABEAM TO ELEPHANT POINT (21° 11' N, 091° 52' E)

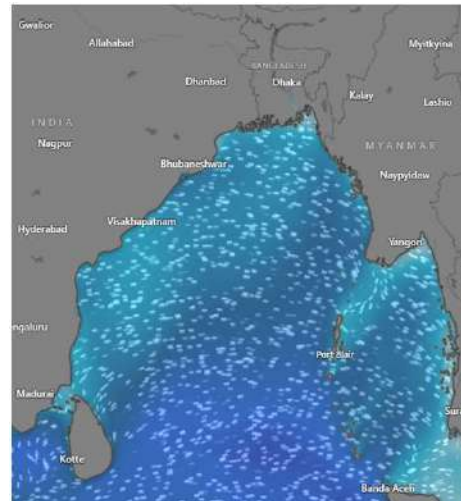


Date	Time	Air Temp (°C)		Sea Surface Temp (°C)	Baro Pressure (mbar)	Wind Direction	Wind Spd (kts)		Wave Ht (m)	Sea State	Humidity (%)	Prob of Rain (%)	Amount of Rain (mm)
		Max	Min				Gusting	Avg					
16-02-25 (Sunday)	0001	29	18	23	1012	NNW	10	6	0.5	2	94	7	0.0
	0600			22	1014	NNE	11	7	0.5	2	96	9	0.0
	1200			25	1012	NNW	9	3	0.6	3	67	2	0.0
	1800			24	1013	NNW	12	6	0.6	3	74	6	0.0
17-02-25 (Monday)	0001	29	18	23	1012	N	7	5	0.6	3	93	6	0.0
	0600			22	1014	N	7	3	0.6	3	96	7	0.0
	1200			25	1012	NNW	11	8	0.6	3	65	2	0.0
	1800			24	1013	NW	15	12	0.7	3	76	5	0.0
18-02-25 (Tuesday)	0001	29	18	23	1012	NNW	14	8	0.7	3	92	6	0.0
	0600			22	1014	NNE	11	8	0.6	3	96	7	0.0
	1200			25	1012	NNW	10	7	0.7	3	67	2	0.0
	1800			24	1013	NW	10	7	0.7	3	75	5	0.0
19-02-25 (Wednesday)	0001	29	18	23	1012	NNW	9	6	0.6	3	93	7	0.0
	0600			22	1014	NNE	8	5	0.6	3	95	9	0.0
	1200			25	1012	NW	7	5	0.6	3	64	2	0.0
	1800			24	1013	NW	13	8	0.6	3	73	5	0.0

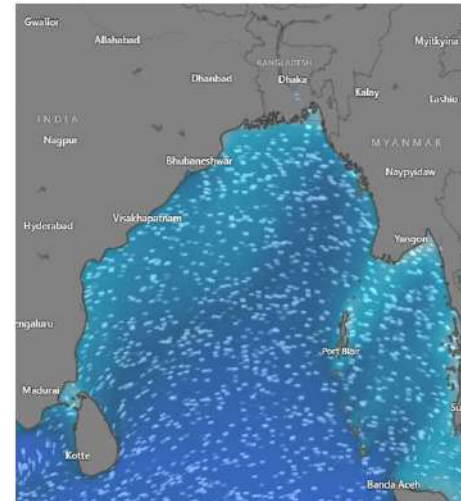
**16 Feb 2025**



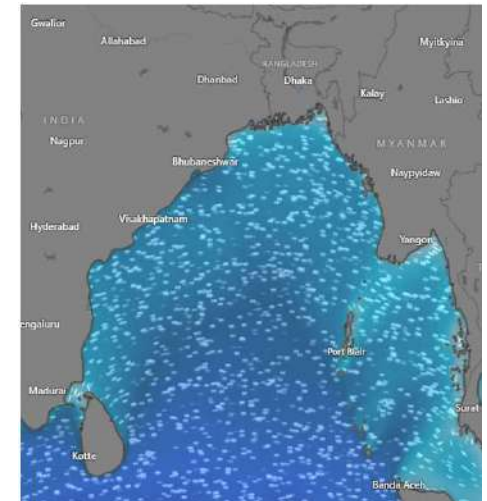
**17 Feb 2025**



**18 Feb 2025**



**19 Feb 2025**



Significant wave height (m)

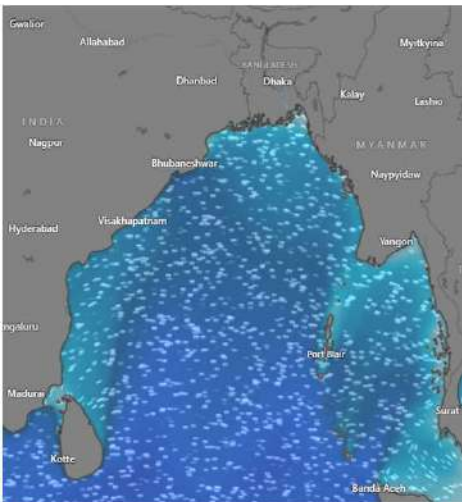


# MARINE WEATHER FORECAST (16 to 23 Feb 2025) ABEAM TO ELEPHANT POINT (21° 11' N, 091° 52' E)

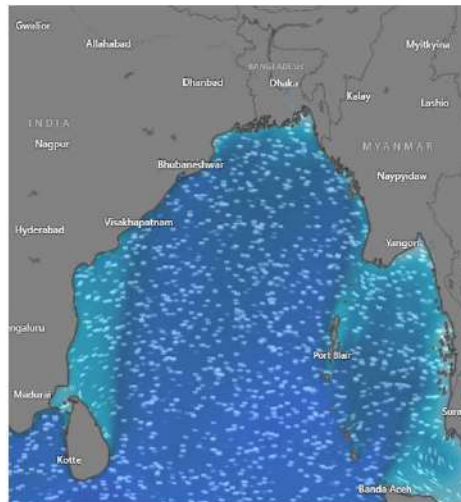


Date	Time	Air Temp (°C)		Sea Surface Temp (°C)	Baro Pressure (mbar)	Wind Direction	Wind Spd (kts)		Wave Ht (m)	Sea State	Humidity (%)	Prob of Rain (%)	Amount of Rain (mm)
		Max	Min				Gusting	Avg					
20-02-25 (Thursday)	0001	29	18	23	1012	NW	8	6	0.6	3	92	6	0.0
	0600			22	1015	NNE	13	10	0.6	3	96	9	0.0
	1200			25	1012	NNW	8	7	0.6	3	73	2	0.0
	1800			24	1013	NNW	12	10	0.7	3	85	7	0.0
21-02-25 (Friday)	0001	29	18	23	1012	NNW	11	9	0.7	3	95	6	0.0
	0600			22	1015	N	10	7	0.8	3	96	7	0.0
	1200			25	1012	NNW	8	6	0.8	3	71	2	0.0
	1800			24	1013	NW	11	9	0.8	3	83	5	0.0
22-02-25 (Saturday)	0001	29	18	24	1012	NNW	12	6	0.8	3	92	6	0.0
	0600			23	1015	N	11	8	0.9	3	96	7	0.0
	1200			26	1012	NNW	10	6	0.8	3	67	2	0.0
	1800			24	1013	W	13	10	0.9	3	82	5	0.0
23-02-25 (Sunday)	0001	29	18	24	1012	NNW	14	9	0.8	3	93	7	0.0
	0600			23	1015	NNE	13	8	0.8	3	95	9	0.0
	1200			26	1012	NNW	11	8	0.8	3	66	2	0.0
	1800			24	1013	NW	12	9	0.8	3	82	5	0.0

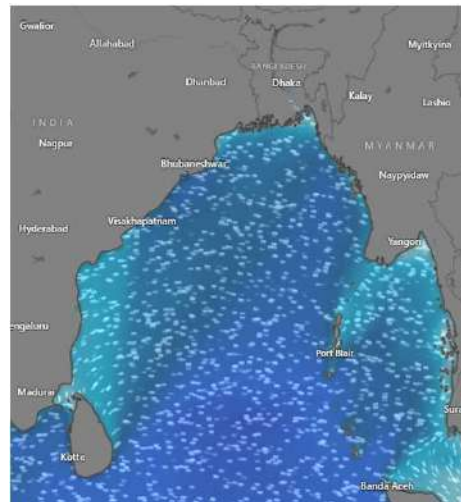
**20 Feb 2025**



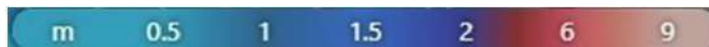
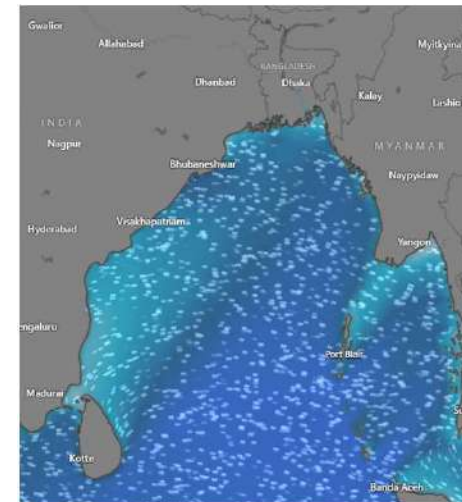
**21 Feb 2025**



**22 Feb 2025**



**23 Feb 2025**



Significant wave height (m)





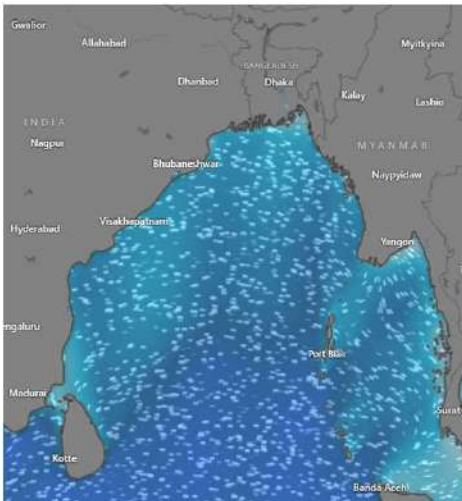
# MARINE WEATHER FORECAST (16 to 23 Feb 2025)

## ABEAM TO ST. MARTIN'S LIGHT HOUSE (20° 37' N, 092° 08' E)

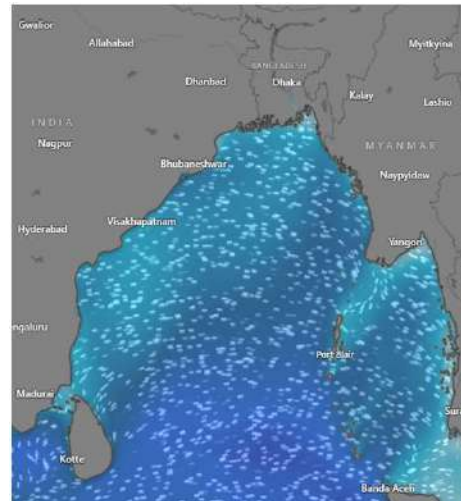


Date	Time	Air Temp (°C)		Sea Surface Temp (°C)	Baro Pressure (mbar)	Wind Direction	Wind Spd (kts)		Wave Ht (m)	Sea State	Humidity (%)	Prob of Rain (%)	Amount of Rain (mm)
		Max	Min				Gusting	Avg					
16-02-25 (Sunday)	0001	29	18	23	1012	NNW	12	8	0.6	3	93	6	0.0
	0600			22	1015	NNE	13	9	0.7	3	95	9	0.0
	1200			26	1012	NNW	10	6	0.7	3	52	2	0.0
	1800			24	1013	NNW	17	10	0.8	3	76	7	0.0
17-02-25 (Monday)	0001	29	18	23	1012	NNW	15	9	0.7	3	94	7	0.0
	0600			22	1015	N	13	6	0.7	3	96	8	0.0
	1200			26	1012	NNW	11	9	0.7	3	54	2	0.0
	1800			24	1013	NW	17	14	0.8	3	75	6	0.0
18-02-25 (Tuesday)	0001	29	18	23	1012	N	15	11	0.8	3	93	7	0.0
	0600			22	1015	NNE	15	10	0.7	3	96	8	0.0
	1200			26	1012	NNW	11	9	0.7	3	54	2	0.0
	1800			24	1013	NW	14	10	0.7	3	75	7	0.0
19-02-25 (Wednesday)	0001	29	18	23	1012	NNW	12	8	0.7	3	92	7	0.0
	0600			22	1015	N	13	9	0.7	3	94	9	0.0
	1200			26	1012	NW	10	8	0.6	3	53	2	0.0
	1800			24	1013	NW	15	11	0.7	3	76	5	0.0

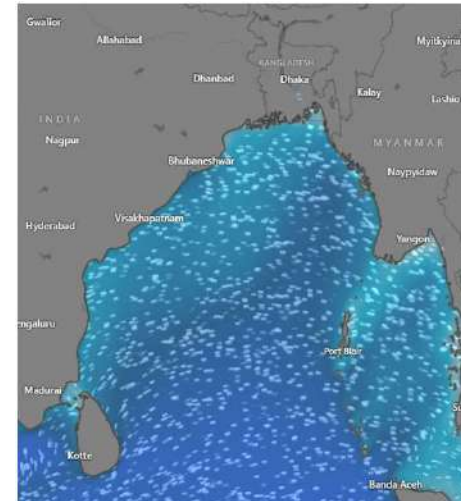
**16 Feb 2025**



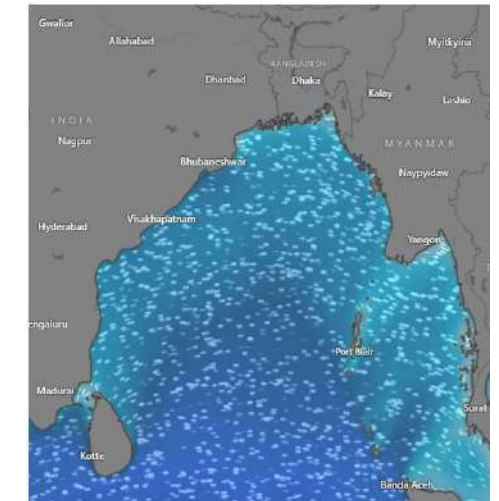
**17 Feb 2025**



**18 Feb 2025**



**19 Feb 2025**



Significant wave height (m)





# MARINE WEATHER FORECAST (16 to 23 Feb 2025)

## ABEAM TO ST. MARTIN'S LIGHT HOUSE (20° 37' N, 092° 08' E)



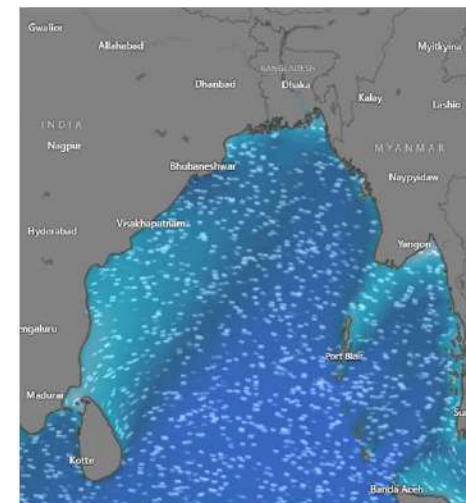
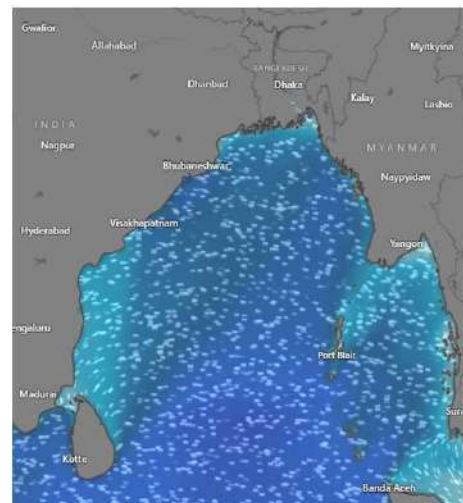
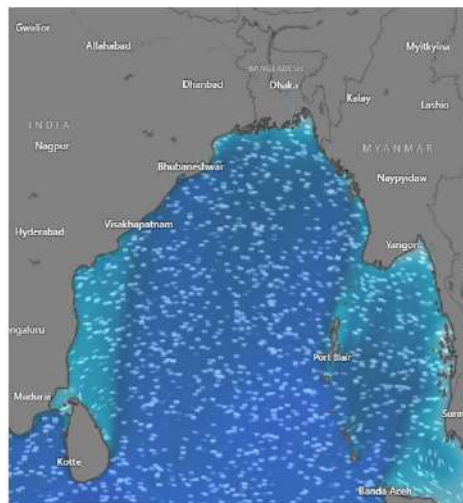
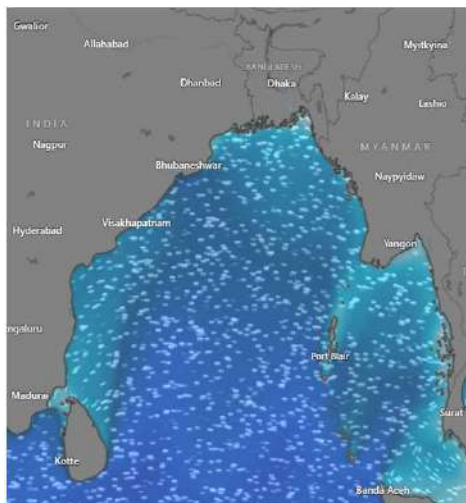
Date	Time	Air Temp (°C)		Sea Surface Temp (°C)	Baro Pressure (mbar)	Wind Direction	Wind Spd (kts)		Wave Ht (m)	Sea State	Humidity (%)	Prob of Rain (%)	Amount of Rain (mm)
		Max	Min				Gusting	Avg					
20-02-25 (Thursday)	0001	29	18	23	1012	NNW	13	10	0.7	3	92	6	0.0
	0600			22	1014	N	14	10	0.7	3	95	9	0.0
	1200			26	1010	NW	11	9	0.7	3	73	2	0.0
	1800			24	1013	NW	14	11	0.8	3	83	7	0.0
21-02-25 (Friday)	0001	29	18	23	1012	NNW	14	11	0.9	3	94	7	0.0
	0600			22	1014	N	16	11	0.9	3	95	9	0.0
	1200			26	1010	NNW	13	10	0.9	3	76	2	0.0
	1800			24	1013	NW	16	12	0.9	3	82	6	0.0
22-02-25 (Saturday)	0001	29	18	23	1012	NNW	15	9	0.8	3	94	7	0.0
	0600			22	1014	N	16	10	0.9	3	95	9	0.0
	1200			26	1010	NW	14	9	0.9	3	75	2	0.0
	1800			24	1013	NW	17	13	0.9	3	83	6	0.0
23-02-25 (Sunday)	0001	29	18	23	1012	N	17	10	0.9	3	94	8	0.0
	0600			22	1014	N	13	7	0.8	3	96	9	0.0
	1200			26	1010	NW	10	8	0.8	3	74	2	0.0
	1800			24	1013	NW	17	12	0.9	3	85	7	0.0

**20 Feb 2025**

**21 Feb 2025**

**22 Feb 2025**

**23 Feb 2025**



Significant wave height (m)



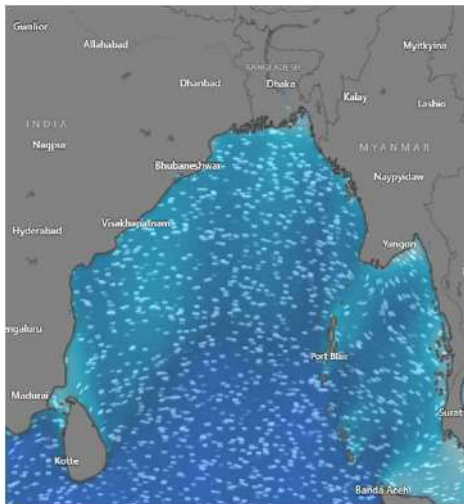
# MARINE WEATHER FORECAST (16 to 23 Feb 2025)

## PAYRA FAIRWAY (21° 22' N, 090° 6' E)

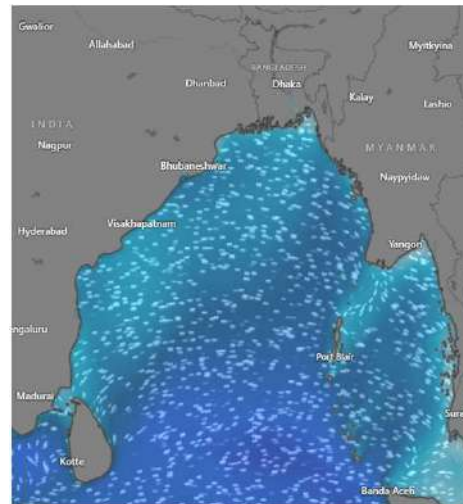


Date	Time	Air Temp (°C)		Sea Surface Temp (°C)	Baro Pressure (mbar)	Wind Direction	Wind Spd (kts)		Wave Ht (m)	Sea State	Humidity (%)	Prob of Rain (%)	Amount of Rain (mm)
		Max	Min				Gusting	Avg					
16-02-25 (Sunday)	0001	29	18	23	1012	SSW	6	4	0.5	2	92	8	0.0
	0600			22	1015	SSW	6	3	0.6	3	96	9	0.0
	1200			25	1012	SW	7	4	0.6	3	54	2	0.0
	1800			24	1013	SW	6	3	0.6	3	83	6	0.0
17-02-25 (Monday)	0001	29	18	23	1012	S	10	7	0.7	3	93	6	0.0
	0600			22	1015	S	10	4	0.7	3	95	9	0.0
	1200			25	1012	W	6	4	0.6	3	54	2	0.0
	1800			24	1013	W	10	6	0.7	3	81	4	0.0
18-02-25 (Tuesday)	0001	29	18	23	1012	W	8	5	0.6	3	93	6	0.0
	0600			22	1015	NNW	6	4	0.6	3	95	9	0.0
	1200			25	1012	E	7	3	0.6	3	54	2	0.0
	1800			24	1013	SSW	9	7	0.6	3	81	4	0.0
19-02-25 (Wednesday)	0001	29	18	23	1012	W	12	10	0.7	3	93	7	0.0
	0600			22	1015	NNW	12	5	0.7	3	96	9	0.0
	1200			25	1012	NW	6	3	0.6	3	55	2	0.0
	1800			24	1013	W	8	6	0.6	3	82	5	0.0

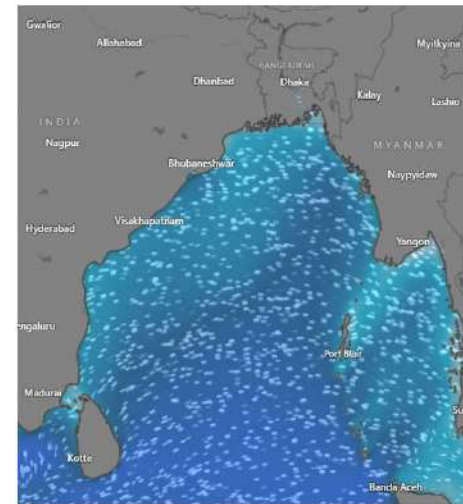
**16 Feb 2025**



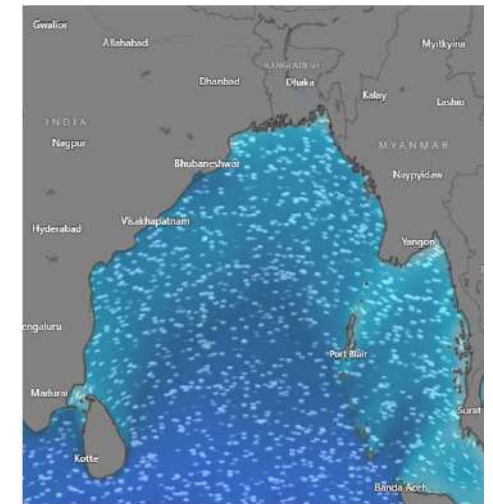
**17 Feb 2025**



**18 Feb 2025**



**19 Feb 2025**



Significant wave height (m)





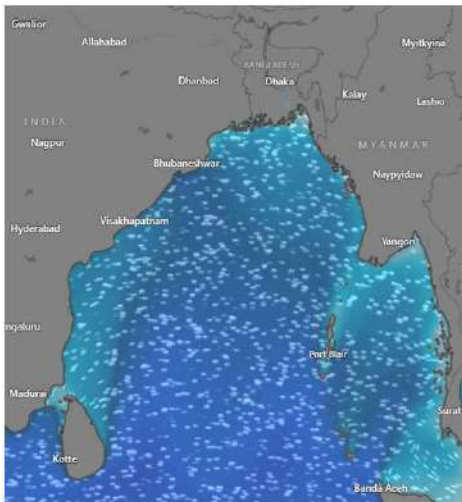
# MARINE WEATHER FORECAST (16 to 23 Feb 2025)

## PAYRA FAIRWAY (21° 22' N, 090° 6' E)

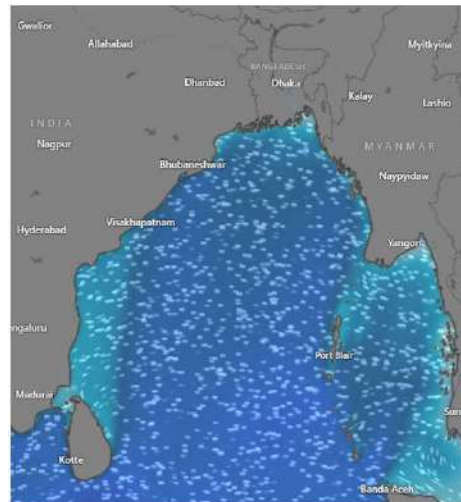


Date	Time	Air Temp (°C)		Sea Surface Temp (°C)	Baro Pressure (mbar)	Wind Direction	Wind Spd (kts)		Wave Ht (m)	Sea State	Humidity (%)	Prob of Rain (%)	Amount of Rain (mm)
		Max	Min				Gusting	Avg					
20-02-25 (Thursday)	0001	29	18	23	1012	W	10	7	0.6	3	92	6	0.0
	0600			22	1014	NNW	9	4	0.6	3	96	8	0.0
	1200			26	1011	NNW	7	2	0.7	3	63	2	0.0
	1800			24	1013	SW	6	3	0.8	3	75	6	0.0
21-02-25 (Friday)	0001	29	18	23	1012	W	11	8	0.8	3	93	6	0.0
	0600			22	1014	NNW	12	9	0.9	3	96	8	0.0
	1200			26	1011	NNW	11	6	0.9	3	66	2	0.0
	1800			24	1013	SW	9	6	0.9	3	76	5	0.0
22-02-25 (Saturday)	0001	29	18	23	1012	W	10	7	0.9	3	93	6	0.0
	0600			22	1014	NNW	10	7	0.8	3	96	8	0.0
	1200			26	1011	NNW	10	2	0.8	3	64	2	0.0
	1800			24	1013	SW	7	4	0.8	3	74	5	0.0
23-02-25 (Sunday)	0001	29	18	23	1012	NNW	15	12	0.9	3	93	7	0.0
	0600			22	1014	NNW	7	4	0.8	3	96	9	0.0
	1200			26	1011	NNE	7	3	0.8	3	65	2	0.0
	1800			24	1013	SW	7	4	0.8	3	75	5	0.0

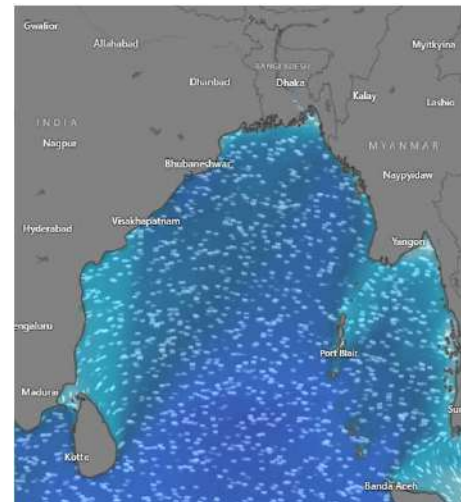
**20 Feb 2025**



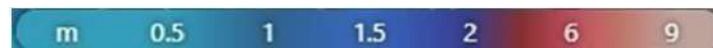
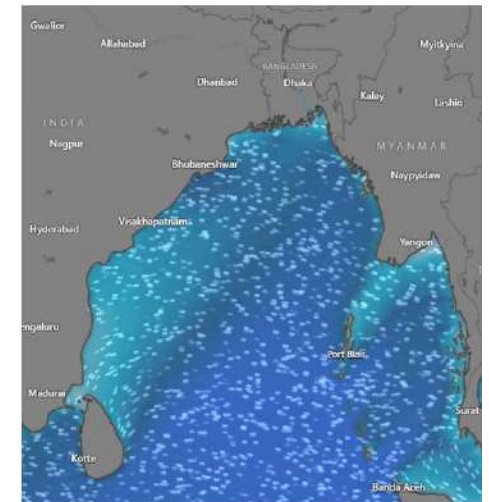
**21 Feb 2025**



**22 Feb 2025**



**23 Feb 2025**



Significant wave height (m)



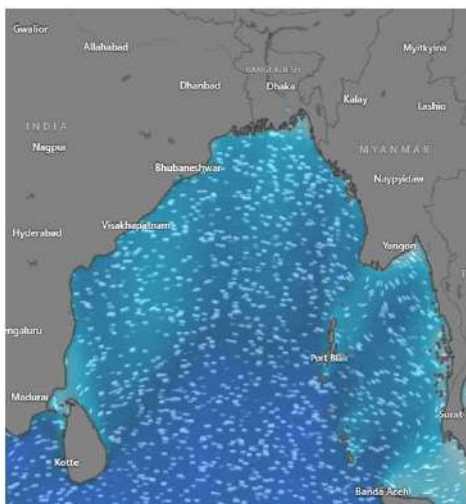
# MARINE WEATHER FORECAST (16 to 23 Feb 2025)

## MONGLA FAIRWAY (21° 26' N, 089° 34' E)

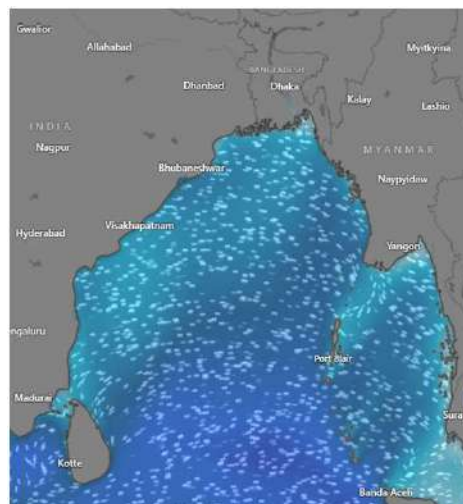


Date	Time	Air Temp (°C)		Sea Surface Temp (°C)	Baro Pressure (mbar)	Wind Direction	Wind Spd (kts)		Wave Ht (m)	Sea State	Humidity (%)	Prob of Rain (%)	Amount of Rain (mm)
		Max	Min				Gusting	Avg					
16-02-25 (Sunday)	0001	29	17	23	1012	SSW	9	5	0.6	3	94	6	0.0
	0600			22	1014	SSW	10	6	0.6	3	96	9	0.0
	1200			25	1011	SW	9	6	0.6	3	52	2	0.0
	1800			24	1013	SSW	8	4	0.6	3	76	5	0.0
17-02-25 (Monday)	0001	29	17	23	1012	S	15	11	0.7	3	93	6	0.0
	0600			22	1014	S	11	7	0.7	3	95	9	0.0
	1200			25	1011	SSW	8	6	0.7	3	52	2	0.0
	1800			24	1013	SSW	10	6	0.7	3	75	5	0.0
18-02-25 (Tuesday)	0001	29	17	23	1012	SSW	8	6	0.6	3	93	6	0.0
	0600			22	1014	W	9	5	0.6	3	95	9	0.0
	1200			25	1011	SSW	5	3	0.6	3	52	2	0.0
	1800			24	1013	SSW	10	8	0.6	3	75	5	0.0
19-02-25 (Wednesday)	0001	29	17	23	1012	SSW	11	8	0.6	3	93	7	0.0
	0600			22	1014	NW	9	5	0.6	3	96	9	0.0
	1200			25	1011	NW	5	3	0.6	3	54	2	0.0
	1800			24	1013	SW	9	6	0.7	3	72	6	0.0

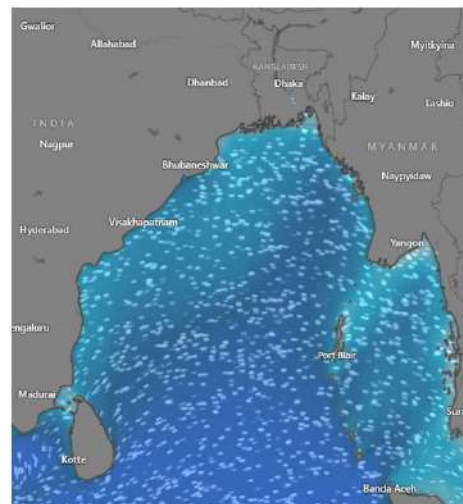
**16 Feb 2025**



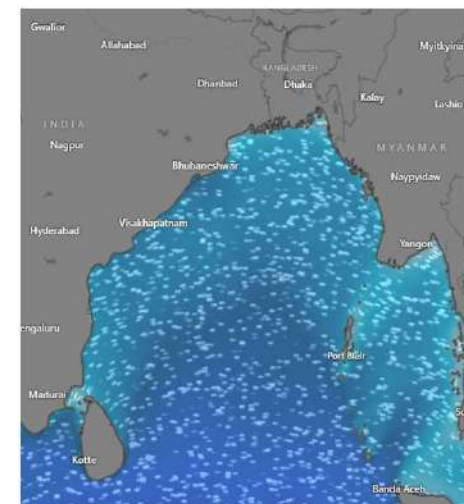
**17 Feb 2025**



**18 Feb 2025**



**19 Feb 2025**



Significant wave height (m)





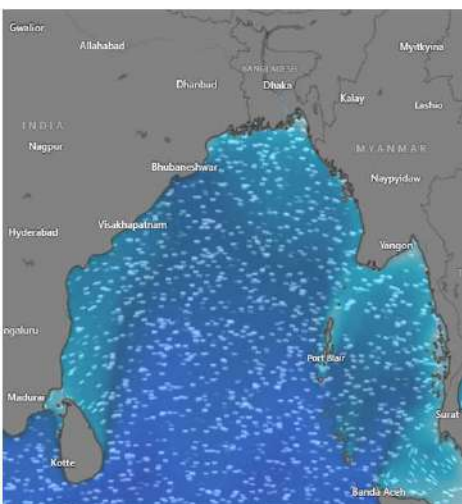
# MARINE WEATHER FORECAST (16 to 23 Feb 2025)

## MONGLA FAIRWAY (21° 26' N, 089° 34' E)

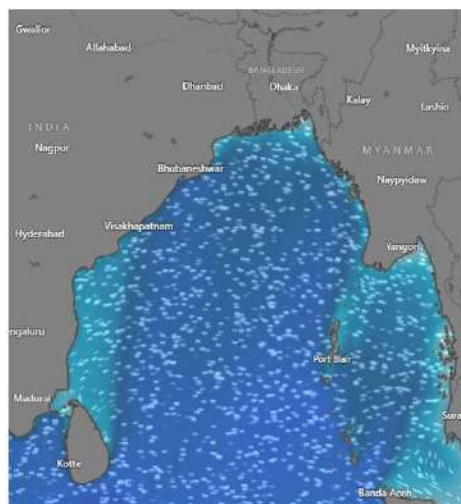


Date	Time	Air Temp (°C)		Sea Surface Temp (°C)	Baro Pressure (mbar)	Wind Direction	Wind Spd (kts)		Wave Ht (m)	Sea State	Humidity (%)	Prob of Rain (%)	Amount of Rain (mm)
		Max	Min				Gusting	Avg					
20-02-25 (Thursday)	0001	29	17	24	1012	W	10	6	0.7	3	92	7	0.0
	0600			23	1014	NNW	5	2	0.7	3	95	9	0.0
	1200			25	1011	W	4	2	0.8	3	72	2	0.0
	1800			24	1012	SSW	5	3	0.8	3	81	7	0.0
21-02-25 (Friday)	0001	29	17	24	1012	W	14	11	0.9	3	93	7	0.0
	0600			23	1014	NNW	11	8	0.9	3	96	9	0.0
	1200			25	1011	NNW	10	5	0.9	3	72	2	0.0
	1800			24	1012	SW	9	6	0.9	3	84	7	0.0
22-02-25 (Saturday)	0001	29	17	24	1012	W	11	6	0.9	3	93	7	0.0
	0600			23	1014	W	9	4	0.9	3	96	9	0.0
	1200			25	1011	SW	7	5	0.8	3	72	2	0.0
	1800			24	1012	SSW	8	6	0.8	3	84	7	0.0
23-02-25 (Sunday)	0001	29	17	24	1012	N	10	5	0.9	3	92	8	0.0
	0600			23	1014	W	7	3	0.8	3	95	9	0.0
	1200			25	1011	NNE	7	4	0.8	3	72	2	0.0
	1800			24	1012	SSW	9	6	0.8	3	85	6	0.0

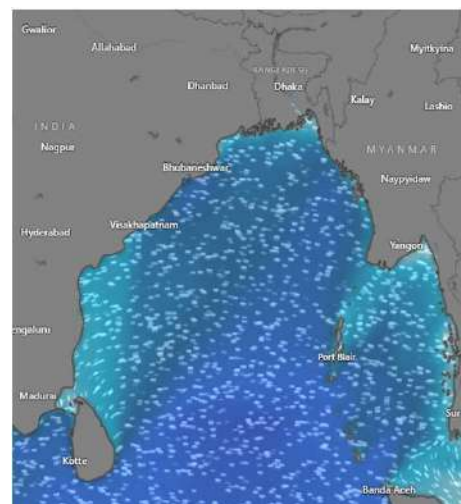
**20 Feb 2025**



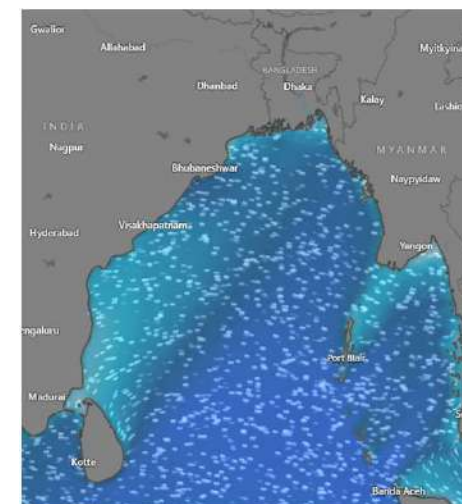
**21 Feb 2025**



**22 Feb 2025**



**23 Feb 2025**



Significant wave height (m)



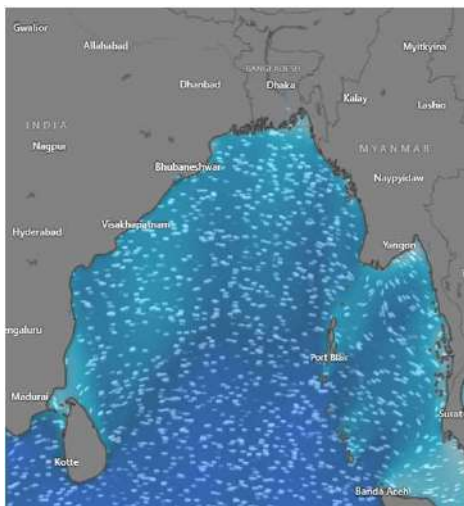
# MARINE WEATHER FORECAST (16 to 23 Feb 2025)

## OUTER EEZ (18° 48' N, 090° 30' E)

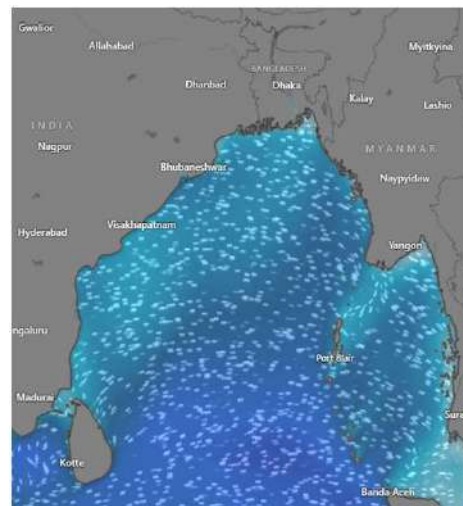


Date	Time	Air Temp (°C)		Sea Surface Temp (°C)	Baro Pressure (mbar)	Wind Direction	Wind Spd (kts)		Wave Ht (m)	Sea State	Humidity (%)	Prob of Rain (%)	Amount of Rain (mm)
		Max	Min				Gusting	Avg					
16-02-25 (Sunday)	0001	29	18	24	1012	NNW	8	5	0.7	3	92	8	0.0
	0600			23	1015	W	7	3	0.7	3	96	9	0.0
	1200			26	1010	NNW	7	4	0.7	3	54	3	0.0
	1800			24	1013	N	7	3	0.7	3	73	6	0.0
17-02-25 (Monday)	0001	29	18	24	1012	NNW	5	4	0.7	3	93	8	0.0
	0600			23	1015	NNW	7	2	0.6	3	96	9	0.0
	1200			26	1010	N	5	10	0.7	3	53	3	0.0
	1800			24	1013	NNW	13	6	0.7	3	72	6	0.0
18-02-25 (Tuesday)	0001	29	18	24	1012	NNW	12	6	0.7	3	93	8	0.0
	0600			23	1015	NNE	8	4	0.8	3	96	9	0.0
	1200			26	1010	NNE	9	6	0.8	3	55	3	0.0
	1800			24	1013	N	7	5	0.8	3	74	6	0.0
19-02-25 (Wednesday)	0001	29	18	24	1012	NNW	10	4	0.8	3	93	7	0.0
	0600			23	1015	N	4	2	0.7	3	95	9	0.0
	1200			26	1010	NW	6	3	0.7	3	52	3	0.0
	1800			24	1013	NNW	8	4	0.7	3	73	5	0.0

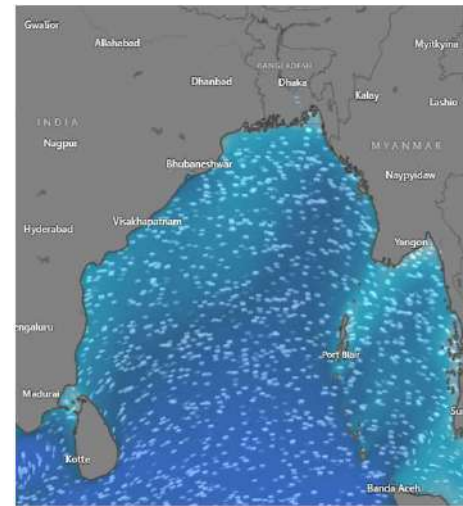
**16 Feb 2025**



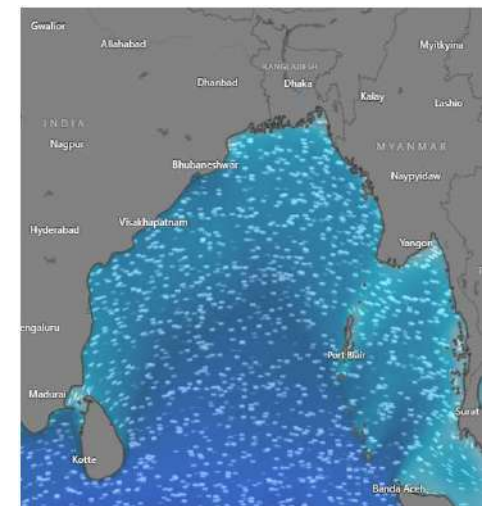
**17 Feb 2025**



**18 Feb 2025**



**19 Feb 2025**



Significant wave height (m)





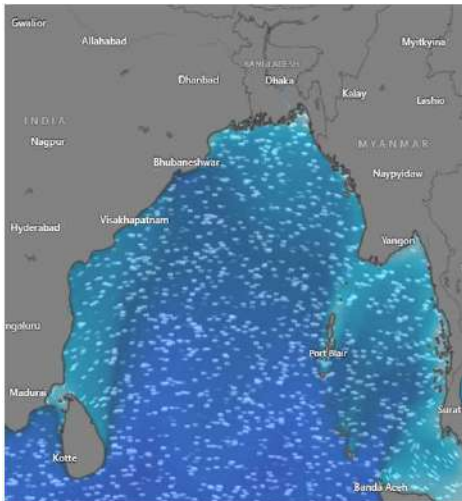
# MARINE WEATHER FORECAST (16 to 23 Feb 2025)

## OUTER EEZ (18° 48' N, 090° 30' E)

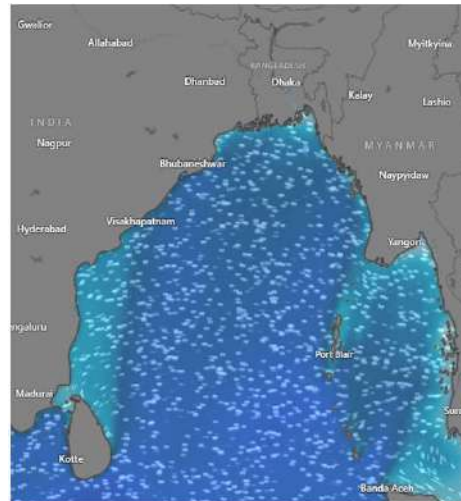


Date	Time	Air Temp (°C)		Sea Surface Temp (°C)	Baro Pressure (mbar)	Wind Direction	Wind Spd (kts)		Wave Ht (m)	Sea State	Humidity (%)	Prob of Rain (%)	Amount of Rain (mm)
		Max	Min				Gusting	Avg					
20-02-25 (Thursday)	0001	29	18	24	1012	NNW	9	7	0.7	3	93	8	0.0
	0600			23	1015	N	8	4	0.7	3	95	9	0.0
	1200			26	1012	NNW	7	3	0.7	3	72	2	0.0
	1800			24	1013	NNW	9	5	0.8	3	86	6	0.0
21-02-25 (Friday)	0001	29	18	24	1012	NNW	9	7	0.8	3	94	8	0.0
	0600			23	1015	N	8	4	0.7	3	97	9	0.0
	1200			26	1012	NNW	7	3	0.7	3	72	2	0.0
	1800			24	1013	NNW	9	5	0.8	3	86	7	0.0
22-02-25 (Saturday)	0001	29	18	24	1012	NNW	9	7	0.8	3	94	8	0.0
	0600			23	1015	N	8	4	0.9	3	96	9	0.0
	1200			26	1012	NNW	7	3	0.9	3	72	2	0.0
	1800			24	1013	NNW	9	5	0.9	3	85	7	0.0
23-02-25 (Sunday)	0001	29	18	24	1012	NNW	8	7	0.9	3	92	7	0.0
	0600			23	1015	N	7	4	0.8	3	97	9	0.0
	1200			26	1012	N	6	3	0.8	3	72	2	0.0
	1800			24	1013	NNW	8	5	0.9	3	83	5	0.0

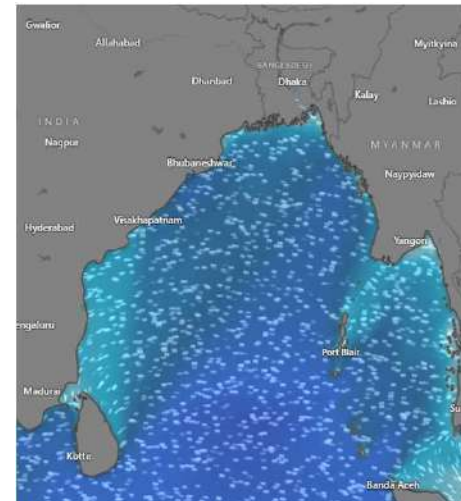
**20 Feb 2025**



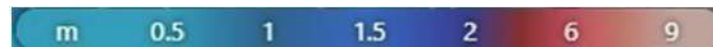
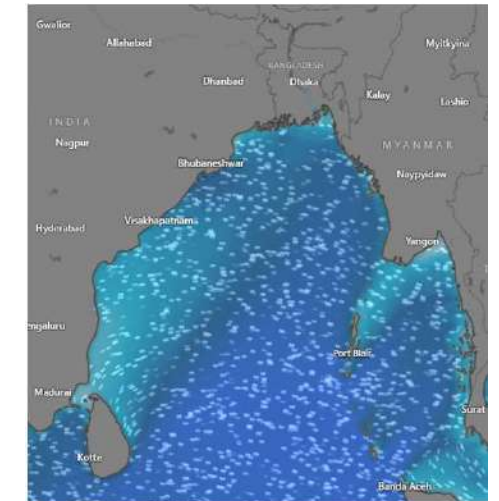
**21 Feb 2025**



**22 Feb 2025**



**23 Feb 2025**



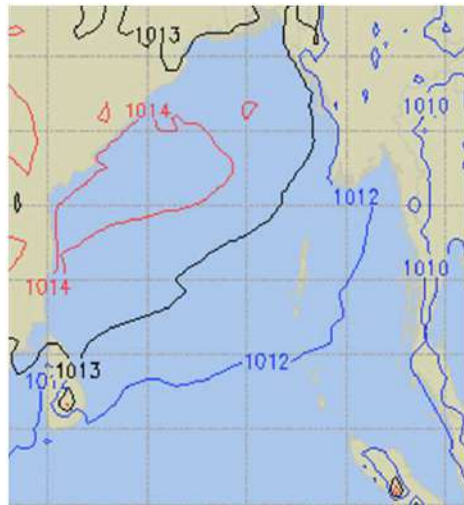
Significant wave height (m)



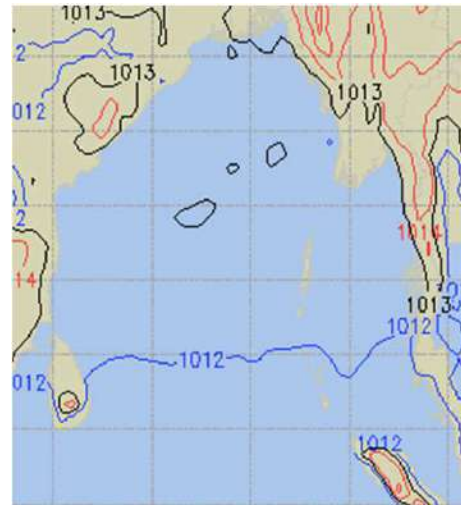
# PREDICTED SURFACE PRESSURE FORECAST (16 to 22 Feb 2025)



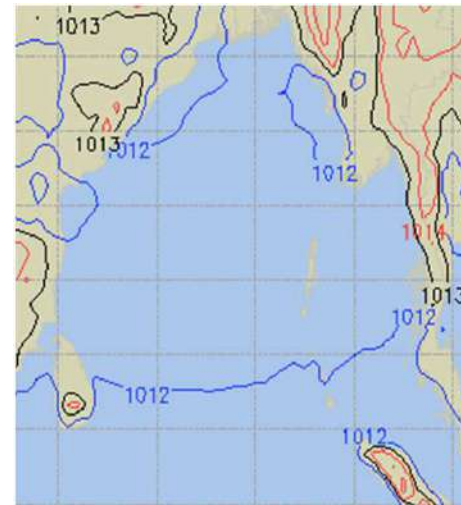
**16 Feb 2025**



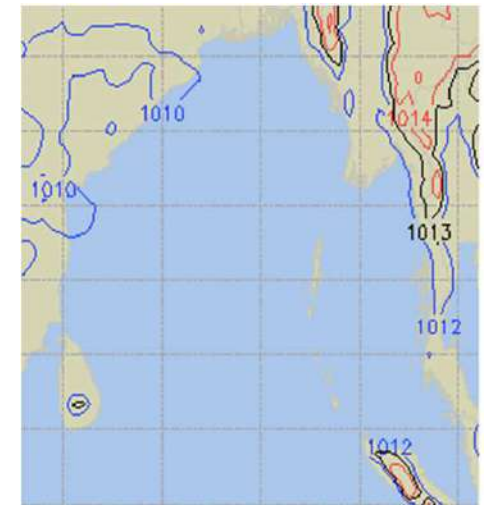
**17 Feb 2025**



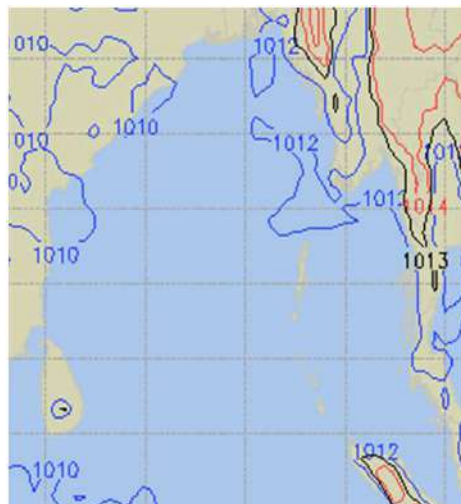
**18 Feb 2025**



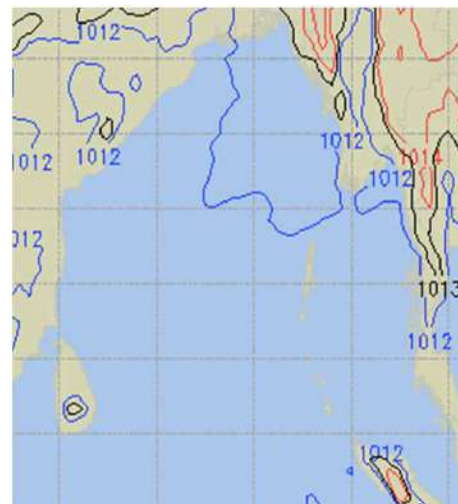
**19 Feb 2025**



**20 Feb 2025**



**21 Feb 2025**



**22 Feb 2025**

