



**SUMMARY OF MARINE WEATHER FORECAST**  
**COASTAL AREA OF BANGLADESH**  
**DATE: 15-22 SEP 2024**



Fleet forecast	Due to pressure gradient over North Bay, deep convection is taking place over North Bay and adjoining areas. Monsoon is strong over North Bay.
Wind direction, speed	South/south-westerly 10 kts, (Temporary gusting up to 31 kts).
Wave height & sea state	Wave height: 0.1 to 3.1 m (Sea state:1 to 5).
Sea surface temperature	26°C - 29°C (May remain nearly unchanged).
Baro pressure	998- 1007 mb
Rainfall	Light to moderate rain/thunder showers over Bay of Bengal & adjoining area with moderately heavy falls at places over Rangpur, Rajshahi, Dhaka, Khulna Barishal & Chattogram division.

**Outlook for 15 to 22 Sep 2024: Rainfall activity is likely to decrease at the end of said period.**

**Last 24 hours rainfall amount 20.4 mm Patenga area.**

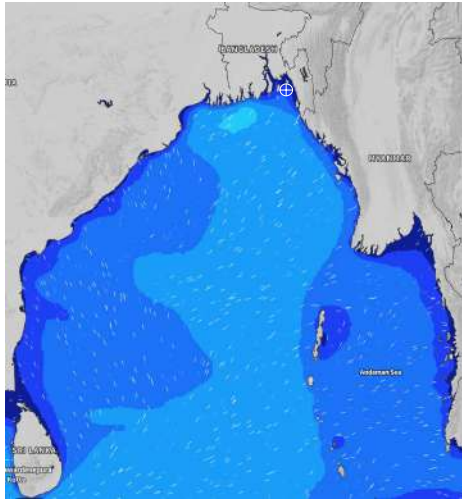


# MARINE WEATHER FORECAST (15-22 Sep 2024) NEAR AUTHORITY BUOY (22° 12' N, 091° 38' E)

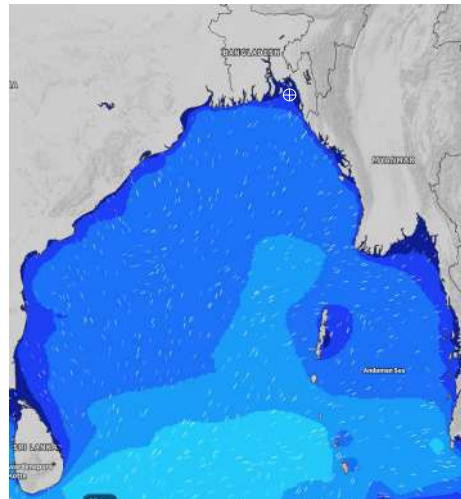


Date	Time	Air Temp (°C)		Sea Surface Temp (°C)	Baro Pressure (mbar)	Wind Direction	Wind Spd (kts)		Wave Ht (m)	Sea State	Humidity (%)	Prob of Rain
		Max	Min				Max	Avg				
15-09-24 (Sunday)	0001	30	26	26	1002	SE	30	20	0.5	2	92	70% (1.2 mm)
	0600			26	1002	SE	24	18	0.5	2	94	78% (2.5 mm)
	1200			29	1002	SSE	21	16	0.4	2	81	28% (0.1 mm)
	1800			28	1002	S	20	16	0.4	2	84	32% (0.2 mm)
16-09-24 (Monday)	0001	32	26	27	1004	SSW	22	6	0.4	2	87	24% (0.0 mm)
	0600			27	1004	SE	19	12	0.3	2	89	23% (0.0 mm)
	1200			29	1005	SSW	11	10	0.2	2	75	22% (0.0 mm)
	1800			29	1004	SSW	12	11	0.3	2	84	23% (0.0 mm)
17-09-24 (Tuesday)	0001	31	27	28	1005	SSW	10	9	0.2	2	90	16% (0.0 mm)
	0600			27	1006	SE	8	7	0.2	2	93	12% (0.0 mm)
	1200			28	1006	SW	6	5	0.1	1	74	23% (0.0 mm)
	1800			29	1004	SW	5	4	0.1	1	82	14% (0.0 mm)
18-09-24 (Wednesday)	0001	31	27	28	1005	SE	4	3	0.1	1	89	24% (0.0 mm)
	0600			27	1005	ESE	6	5	0.1	1	93	65% (0.6 mm)
	1200			28	1004	WSW	6	5	0.1	1	78	58% (0.5 mm)
	1800			29	1003	SW	7	6	0.1	1	82	24% (0.0 mm)

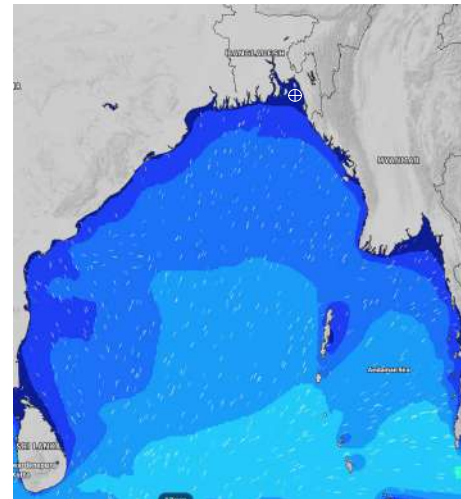
**15 Sep 2024**



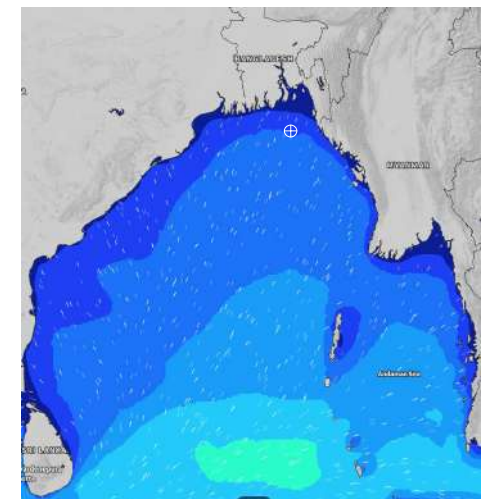
**16 Sep 2024**



**17 Sep 2024**



**18 Sep 2024**



Significant wave height (m)

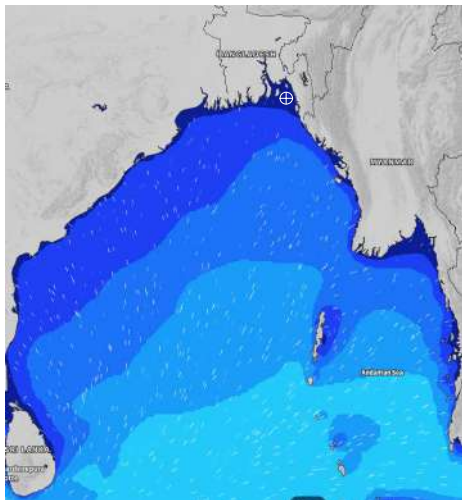


# MARINE WEATHER FORECAST (15-22 Sep 2024) NEAR AUTHORITY BUOY (22° 12' N, 091° 38' E)

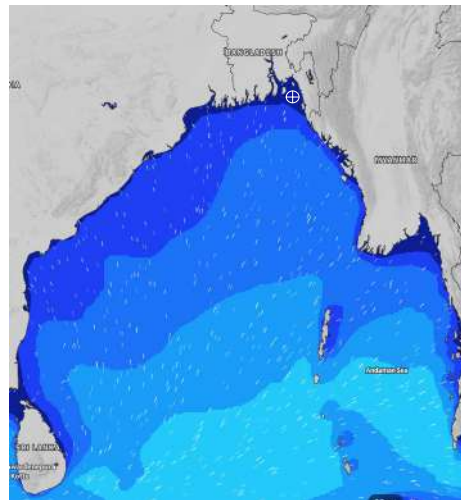


Date	Time	Air Temp (°C)		Sea Surface Temp (°C)	Baro Pressure (mbar)	Wind Direction	Wind Spd (kts)		Wave Ht (m)	Sea State	Humidity (%)	Prob of Rain
		Max	Min				Max	Avg				
19-09-24 (Thursday)	0001	32	27	28	1005	SSE	6	5	0.1	1	90	74% (0.5 mm)
	0600			27	1005	SE	5	4	0.1	1	94	66% (0.6 mm)
	1200			28	1005	SW	7	6	0.1	1	77	43% (0.4 mm)
	1800			29	1003	WSW	6	5	0.1	1	81	20% (0.0 mm)
20-09-24 (Friday)	0001	33	27	29	1005	SSE	6	5	0.1	1	90	66% (0.6 mm)
	0600			27	1004	SSE	7	6	0.1	1	93	58% (0.6 mm)
	1200			28	1005	SSW	10	8	0.2	2	78	54% (0.5 mm)
	1800			29	1003	SSW	5	4	0.1	1	81	43% (0.4 mm)
21-09-24 (Saturday)	0001	33	27	28	1005	SSE	5	4	0.1	1	92	65% (0.6 mm)
	0600			27	1004	SE	4	3	0.1	1	94	34% (0.2 mm)
	1200			28	1004	WSW	6	5	0.1	1	79	56% (0.5 mm)
	1800			29	1002	S	11	9	0.2	2	82	42% (0.4 mm)
22-09-24 (Sunday)	0001	32	27	28	1004	SSE	5	4	0.1	1	91	68% (0.7 mm)
	0600			27	1004	SE	7	6	0.1	1	92	37% (0.2 mm)
	1200			28	1004	WSW	5	4	0.1	1	80	53% (0.5 mm)
	1800			29	1001	S	8	7	0.1	1	83	42% (0.4 mm)

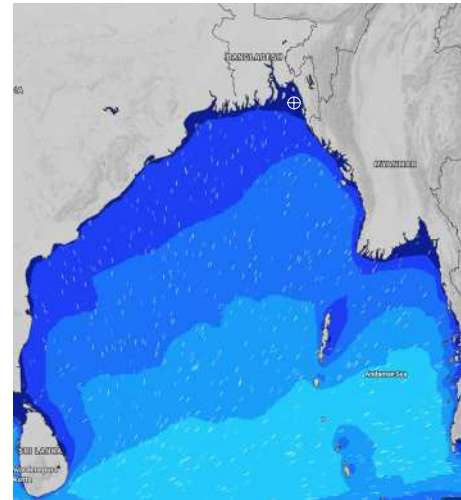
**19 Sep 2024**



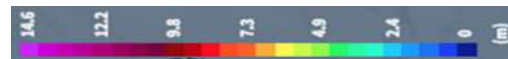
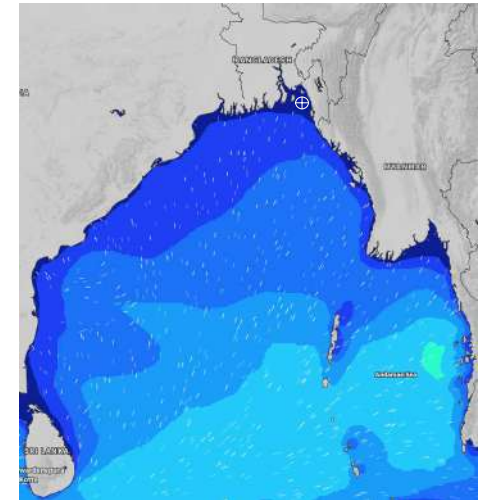
**20 Sep 2024**



**21 Sep 2024**



**22 Sep 2024**



Significant wave height (m)



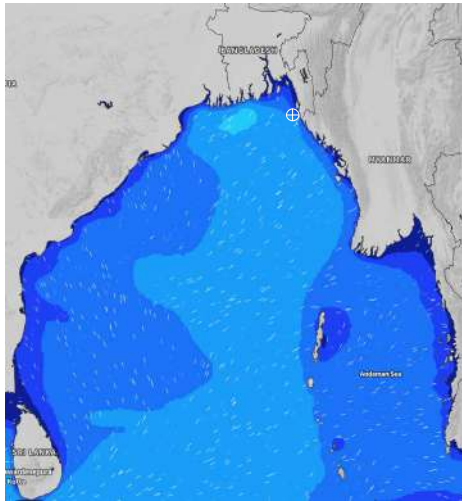
## MARINE WEATHER FORECAST (15-22 Sep 2024)

### 20 NM WEST OF ELEPHANT POINT (21° 10' N, 091° 42' E)

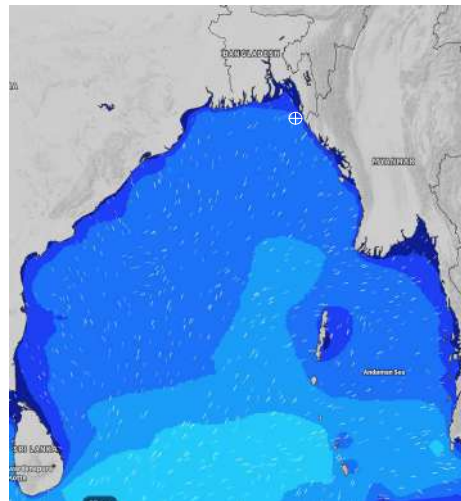


Date	Time	Air Temp (°C)		Sea Surface Temp (°C)	Baro Pressure (mbar)	Wind Direction	Wind Spd (kts)		Wave Ht (m)	Sea State	Humidity (%)	Prob of Rain
		Max	Min				Max	Avg				
15-09-24 (Sunday)	0001	29	26	28	1002	SSE	24	22	2.0	4	92	69% (0.6 mm)
	0600			27	1002	SE	19	18	1.8	4	94	70% (0.5 mm)
	1200			28	1003	SSW	21	20	1.8	4	85	58% (0.6 mm)
	1800			29	1002	SSW	17	15	1.5	4	89	41% (1.0 mm)
16-09-24 (Monday)	0001	31	26	28	1004	SSE	19	18	1.5	4	90	17% (0.0 mm)
	0600			28	1004	SE	18	17	1.5	4	91	24% (0.0 mm)
	1200			28	1005	SSE	15	14	1.3	4	79	32% (0.2 mm)
	1800			29	1004	S	11	10	1.2	3	87	12% (0.0 mm)
17-09-24 (Tuesday)	0001	31	27	29	1005	SSE	10	9	1.1	3	91	14% (0.0 mm)
	0600			28	1006	SE	9	8	1.0	3	93	16% (0.0 mm)
	1200			28	1006	S	8	7	1.0	3	77	20% (0.0 mm)
	1800			29	1004	SSW	4	3	0.9	3	85	23% (0.0 mm)
18-09-24 (Wednesday)	0001	30	26	29	1005	SSE	5	4	0.9	3	90	24% (0.0 mm)
	0600			28	1005	SE	5	4	0.9	3	92	56% (0.7 mm)
	1200			29	1005	SSW	4	3	0.9	3	80	63% (0.6 mm)
	1800			29	1003	W	7	5	0.9	3	85	24% (0.0 mm)

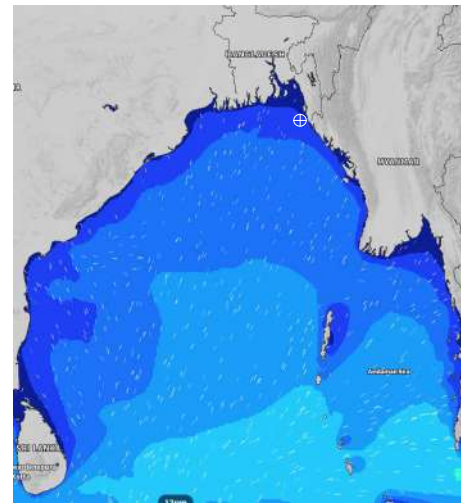
**15 Sep 2024**



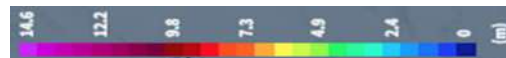
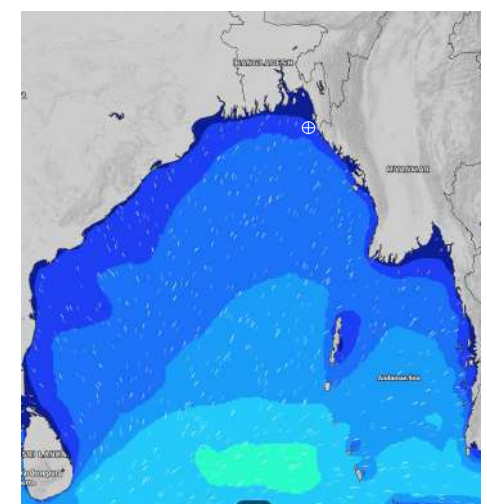
**16 Sep 2024**



**17 Sep 2024**



**18 Sep 2024**



Significant wave height (m)

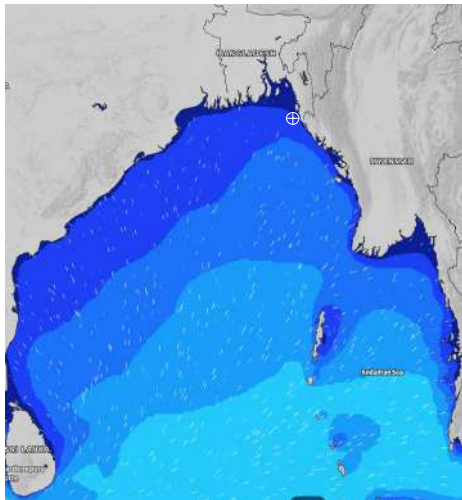


## MARINE WEATHER FORECAST (15-22 Sep 2024) 20 NM WEST OF ELEPHANT POINT (21° 10' N, 091° 42' E)

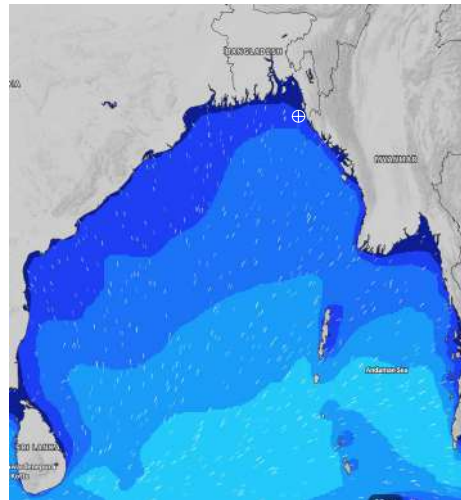


Date	Time	Air Temp (°C)		Sea Surface Temp (°C)	Baro Pressure (mbar)	Wind Direction	Wind Spd (kts)		Wave Ht (m)	Sea State	Humidity (%)	Prob of Rain
		Max	Min				Max	Avg				
19-09-24 (Thursday)	0001	31	27	29	1005	S	4	3	0.9	3	90	46% (0.4 mm)
	0600			28	1005	ESE	5	4	0.9	3	93	45% (0.5 mm)
	1200			29	1005	SW	5	4	0.9	3	80	63% (0.6 mm)
	1800			29	1003	WNW	6	5	0.9	3	86	28% (0.1 mm)
20-09-24 (Friday)	0001	32	27	29	1005	SSE	4	3	0.8	3	91	47% (0.5 mm)
	0600			27	1005	WSW	11	10	0.8	3	93	41% (0.5 mm)
	1200			26	1005	NW	5	4	0.9	3	80	65% (0.6 mm)
	1800			27	1003	WNW	7	6	1.0	3	85	23% (0.1 mm)
21-09-24 (Saturday)	0001	32	27	28	1005	W	6	5	0.9	3	91	45% (0.4 mm)
	0600			28	1004	ESE	6	5	0.9	3	92	46% (0.5 mm)
	1200			29	1005	SW	6	4	0.8	3	79	68% (0.6 mm)
	1800			29	1002	W	11	10	0.9	3	86	26% (0.1 mm)
22-09-24 (Sunday)	0001	31	27	28	1004	W	9	8	0.9	3	90	45% (0.4 mm)
	0600			28	1004	ESE	12	11	0.9	3	93	47% (0.5 mm)
	1200			29	1004	SW	7	6	0.9	3	80	62% (0.6 mm)
	1800			29	1001	W	10	9	0.9	3	85	30% (0.2 mm)

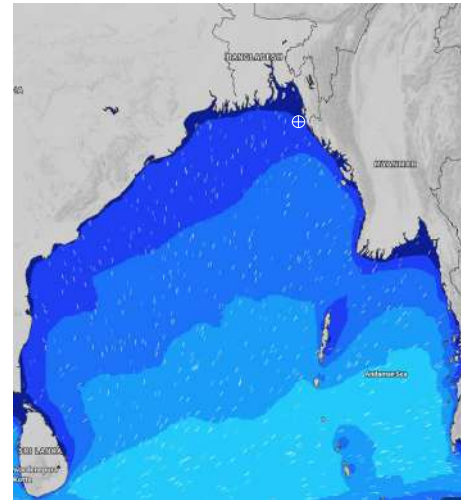
**19 Sep 2024**



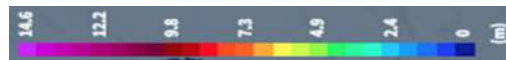
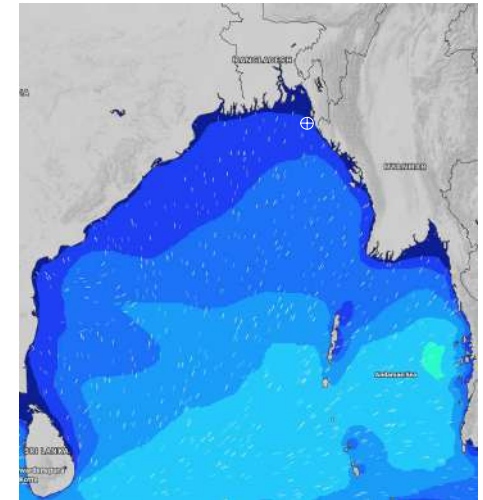
**20 Sep 2024**



**21 Sep 2024**



**22 Sep 2024**



Significant wave height (m)



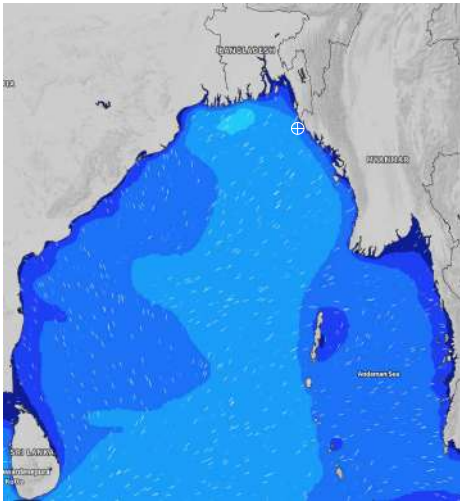
# MARINE WEATHER FORECAST (15-22 Sep 2024)

## 15 NM WEST OF ST. MARTIN'S LIGHT HOUSE (20° 37' N, 092° 03' E)

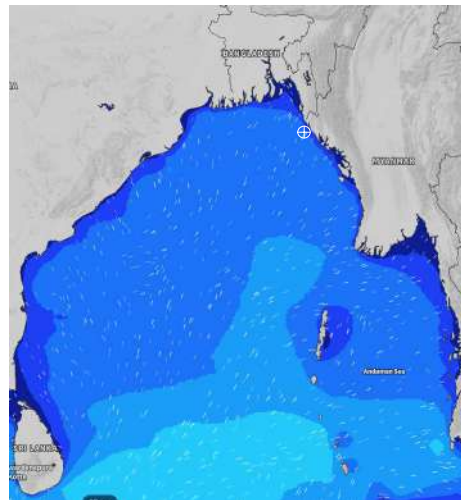


Date	Time	Air Temp (°C)		Sea Surface Temp (°C)	Baro Pressure (mbar)	Wind Direction	Wind Spd (kts)		Wave Ht (m)	Sea State	Humidity (%)	Prob of Rain
		Max	Min				Max	Avg				
15-09-24 (Sunday)	0001	28	26	28	1003	S	18	15	2.1	4	93	97% (2.6 mm)
	0600			28	1002	SSW	11	10	1.9	4	94	95% (2.9 mm)
	1200			29	1004	SE	14	13	2.0	4	93	89% (1.2 mm)
	1800			29	1002	S	12	11	1.9	4	90	41% (0.4 mm)
16-09-24 (Monday)	0001	30	26	28	1005	SSE	13	11	1.7	4	92	24% (0.0 mm)
	0600			28	1004	SE	12	11	1.6	4	94	35% (0.2 mm)
	1200			29	1006	SE	13	12	1.5	4	84	40% (0.4 mm)
	1800			29	1004	SSE	8	7	1.4	4	87	14% (0.0 mm)
17-09-24 (Tuesday)	0001	30	27	29	1005	SSE	8	7	1.3	4	91	11% (0.0 mm)
	0600			28	1005	SSE	6	5	1.3	4	94	12% (0.0 mm)
	1200			28	1007	SE	8	7	1.2	3	79	37% (0.0 mm)
	1800			29	1004	SSW	6	5	1.1	3	86	15% (0.0 mm)
18-09-24 (Wednesday)	0001	30	27	29	1005	SSE	4	3	1.1	3	92	36% (0.2 mm)
	0600			28	1004	SE	4	3	1.1	3	91	65% (0.6 mm)
	1200			28	1006	SE	5	4	1.2	3	82	62% (0.6 mm)
	1800			29	1003	SSW	7	6	1.2	3	86	30% (0.2 mm)

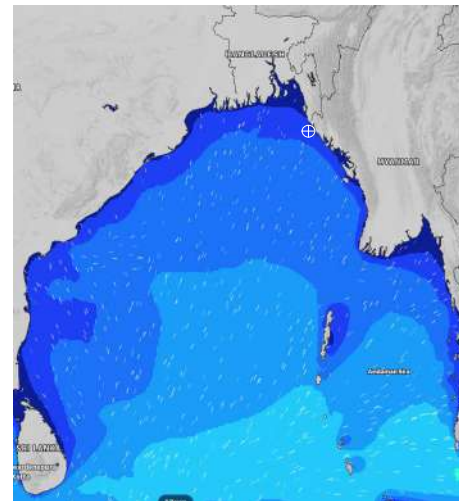
**15 Sep 2024**



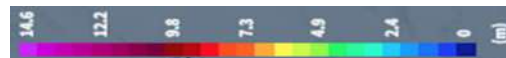
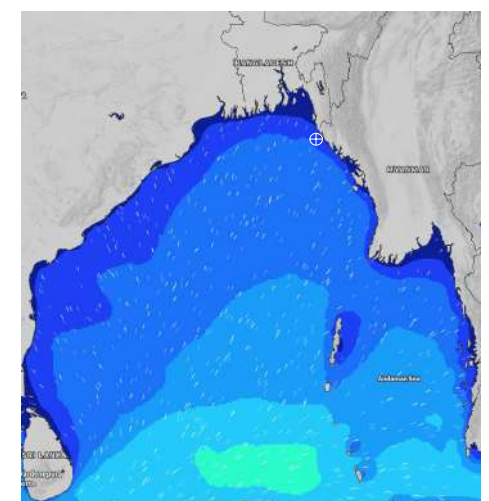
**16 Sep 2024**



**17 Sep 2024**



**18 Sep 2024**



Significant wave height (m)



# MARINE WEATHER FORECAST (15-22 Sep 2024)

## 15 NM WEST OF ST. MARTIN'S LIGHT HOUSE (20° 37' N, 092° 03' E)



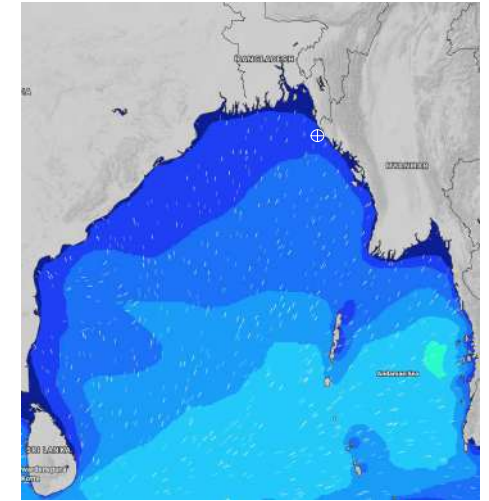
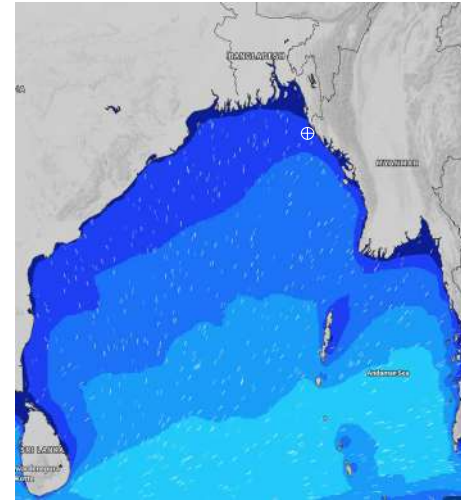
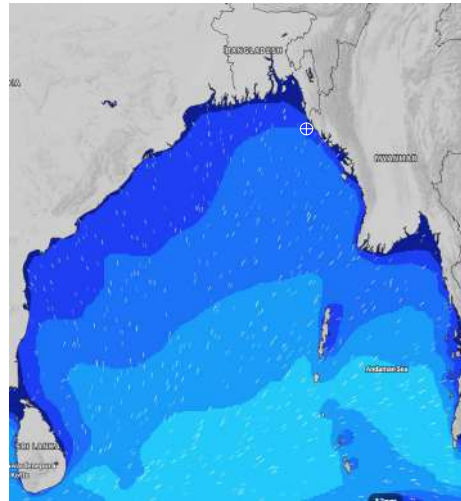
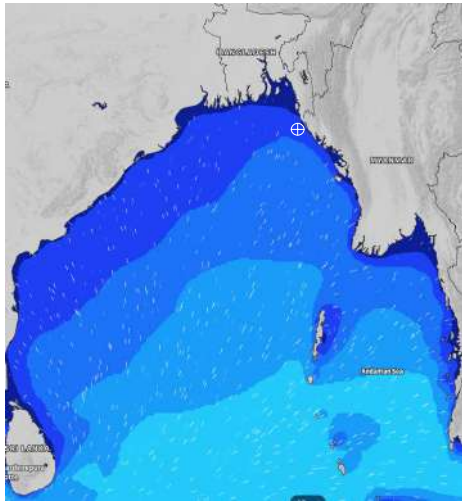
Date	Time	Air Temp (°C)		Sea Surface Temp (°C)	Baro Pressure (mbar)	Wind Direction	Wind Spd (kts)		Wave Ht (m)	Sea State	Humidity (%)	Prob of Rain
		Max	Min				Max	Avg				
19-09-24 (Thursday)	0001	30	27	29	1005	SW	4	3	1.2	3	90	60% (0.7 mm)
	0600			28	1004	WSW	3	2	1.2	3	91	56% (0.6 mm)
	1200			28	1006	SSW	5	4	1.2	3	82	67% (0.6 mm)
	1800			29	1003	W	6	5	1.1	3	86	25% (0.0 mm)
20-09-24 (Friday)	0001	31	27	29	1005	S	5	4	1.1	3	91	48% (0.5 mm)
	0600			27	1003	SSW	4	3	1.1	3	93	53% (0.5 mm)
	1200			27	1007	SE	6	5	1.2	3	81	66% (0.6 mm)
	1800			28	1002	SW	7	6	1.3	4	85	27% (0.1 mm)
21-09-24 (Saturday)	0001	31	27	28	1005	S	6	5	1.2	3	90	45% (0.5 mm)
	0600			28	1004	SSW	7	6	1.1	3	92	58% (0.5 mm)
	1200			27	1006	SE	7	6	1.1	3	82	66% (0.6 mm)
	1800			27	1002	SW	10	9	1.2	3	86	28% (0.1 mm)
22-09-24 (Sunday)	0001	31	27	28	1005	S	7	6	1.1	3	91	49% (0.5 mm)
	0600			28	1004	SSW	8	7	1.1	3	93	56% (0.5 mm)
	1200			27	1006	SE	10	9	1.1	3	81	66% (0.6 mm)
	1800			27	1002	SW	10	9	1.1	3	85	30% (0.2 mm)

**19 Sep 2024**

**20 Sep 2024**

**21 Sep 2024**

**22 Sep 2024**



Significant wave height (m)



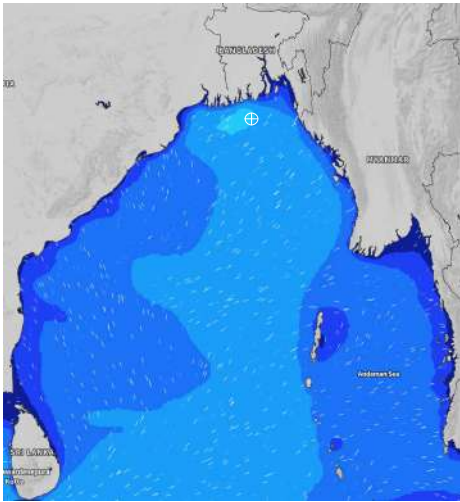
# MARINE WEATHER FORECAST (15- 22 Sep 2024)

## 40 NM ESE OF PAYRA FAIRWAY (21° 07' N, 090° 45' E)

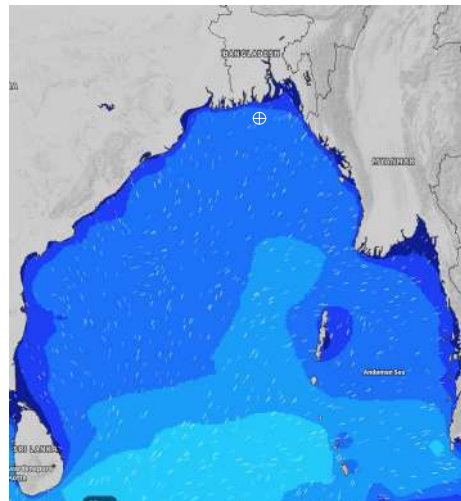


Date	Time	Air Temp (°C)		Sea Surface Temp (°C)	Baro Pressure (mbar)	Wind Direction	Wind Spd (kts)		Wave Ht (m)	Sea State	Humidity (%)	Prob of Rain
		Max	Min				Max	Avg				
15-09-24 (Sunday)	0001	28	27	29	1001	SSW	27	23	2.4	4	92	96% (6.5 mm)
	0600			29	1000	S	24	18	2.5	4	94	78% (2.5 mm)
	1200			29	1002	S	20	18	2.3	4	88	98% (1.9 mm)
	1800			29	1001	S	19	16	2.0	4	88	57% (0.4 mm)
16-09-24 (Monday)	0001	31	27	29	1003	S	17	16	1.9	4	87	58% (0.6 mm)
	0600			29	1003	S	12	11	1.7	4	90	61% (0.6 mm)
	1200			29	1005	SSE	11	10	1.5	4	80	17% (0.0 mm)
	1800			29	1004	SSE	10	9	1.4	4	84	10% (0.0 mm)
17-09-24 (Tuesday)	0001	32	27	29	1005	SSE	10	9	1.4	4	88	12% (0.0 mm)
	0600			29	1005	S	6	5	1.3	4	90	14% (0.0 mm)
	1200			29	1006	SSE	6	5	1.2	3	74	16% (0.0 mm)
	1800			29	1004	SSE	5	4	1.2	3	82	20% (0.0 mm)
18-09-24 (Wednesday)	0001	32	27	29	1005	S	5	4	1.2	3	90	14% (0.0 mm)
	0600			29	1004	SE	5	4	1.2	3	92	16% (0.0 mm)
	1200			29	1005	S	5	4	1.2	3	72	20% (0.0 mm)
	1800			29	1003	WSW	4	3	1.2	3	80	14% (0.0 mm)

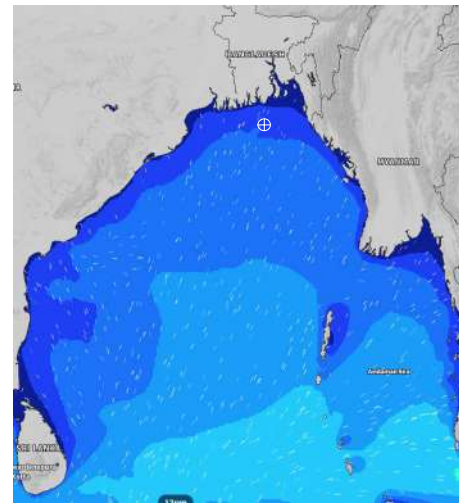
**15 Sep 2024**



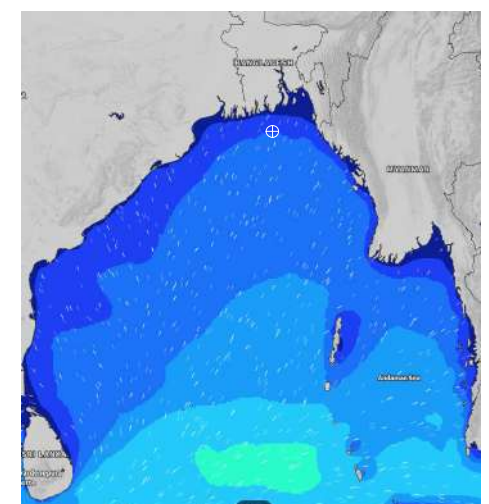
**16 Sep 2024**



**17 Sep 2024**



**18 Sep 2024**



Significant wave height (m)





## MARINE WEATHER FORECAST (15- 22 Sep 2024) 40 NM ESE OF PAYRA FAIRWAY (21° 07' N, 090° 45' E)



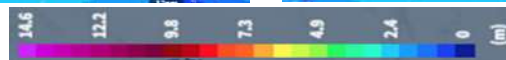
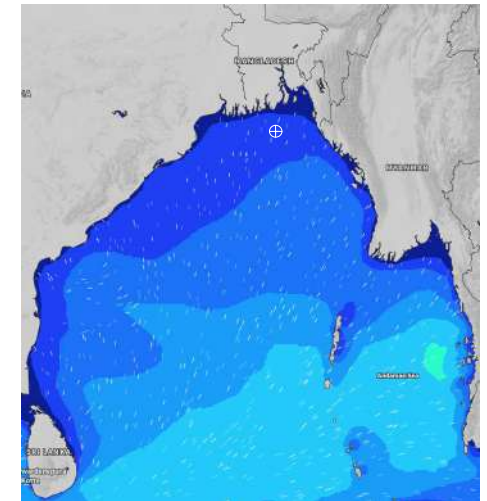
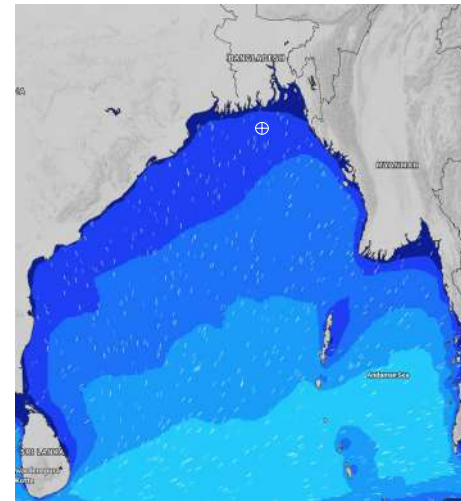
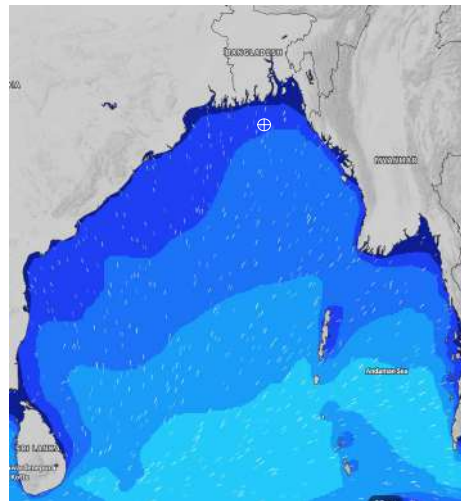
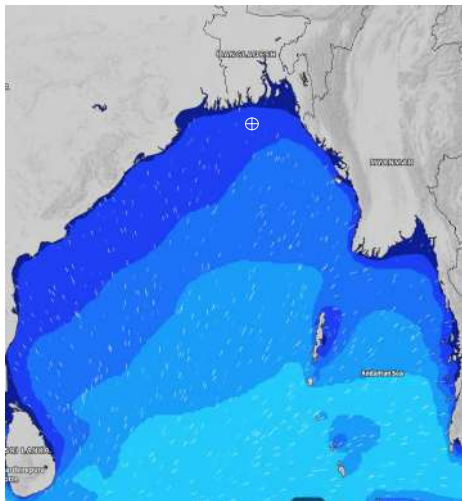
Date	Time	Air Temp (°C)		Sea Surface Temp (°C)	Baro Pressure (mbar)	Wind Direction	Wind Spd (kts)		Wave Ht (m)	Sea State	Humidity (%)	Prob of Rain
		Max	Min				Max	Avg				
19-09-24 (Thursday)	0001	32	28	29	1005	SW	5	4	1.2	3	87	49% (0.4 mm)
	0600			29	1004	SW	5	4	1.1	3	91	75% (0.7 mm)
	1200			29	1005	SW	4	3	1.1	3	76	44% (0.4 mm)
	1800			29	1003	W	6	5	1.1	3	81	20% (0.0 mm)
20-09-24 (Friday)	0001	33	28	29	1005	SSW	6	5	1.1	3	89	53% (0.5 mm)
	0600			28	1005	SSW	10	9	1.0	3	92	58% (0.6 mm)
	1200			27	1005	SSW	8	7	1.2	3	73	57% (0.6 mm)
	1800			28	1003	SSW	6	5	1.2	3	81	26% (0.1 mm)
21-09-24 (Saturday)	0001	33	28	28	1005	SSW	8	7	1.1	3	89	53% (0.5 mm)
	0600			28	1004	S	6	5	1.1	3	91	55% (0.5 mm)
	1200			29	1005	S	5	4	1.1	3	74	57% (0.5 mm)
	1800			29	1003	S	8	7	1.1	3	80	30% (0.1 mm)
22-09-24 (Sunday)	0001	32	28	28	1004	SSW	10	9	1.1	3	90	55% (0.5 mm)
	0600			28	1004	S	11	10	1.2	3	91	56% (0.5 mm)
	1200			29	1004	S	8	7	1.1	3	77	58% (0.5 mm)
	1800			29	1002	S	8	7	1.1	3	80	32% (0.2 mm)

**19 Sep 2024**

**20 Sep 2024**

**21 Sep 2024**

**22 Sep 2024**



Significant wave height (m)

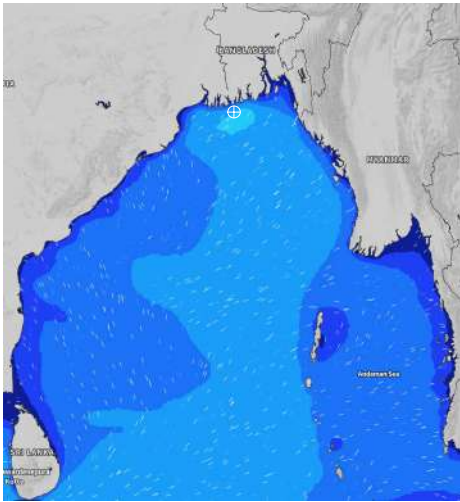


## MARINE WEATHER FORECAST (15- 22 Sep 2024) 10 NM SOUTH OF MONGLA FAIRWAY (21° 16' N, 089° 34' E)

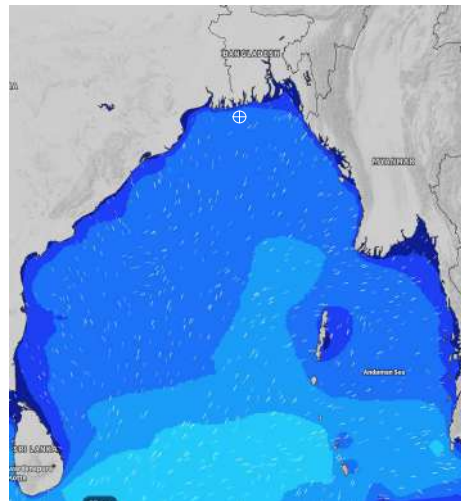


Date	Time	Air Temp (°C)		Sea Surface Temp (°C)	Baro Pressure (mbar)	Wind Direction	Wind Spd (kts)		Wave Ht (m)	Sea State	Humidity (%)	Prob of Rain
		Max	Min				Max	Avg				
15-09-24 (Sunday)	0001	28	26	28	998	SW	31	30	3.1	5	92	80% (1.5 mm)
	0600			28	998	SW	29	26	3.1	5	94	77% (1.8 mm)
	1200			28	999	SSW	29	26	2.7	5	93	98% (1.5 mm)
	1800			29	999	SSW	23	22	2.4	4	91	66% (0.7 mm)
16-09-24 (Monday)	0001	31	27	29	1002	S	25	21	2.2	4	91	78% (1.5 mm)
	0600			29	1002	SSW	19	15	2.0	4	93	83% (2.2 mm)
	1200			29	1004	S	17	15	1.8	4	80	24% (0.0 mm)
	1800			29	1003	SSE	13	12	1.5	4	84	24% (0.0 mm)
17-09-24 (Tuesday)	0001	33	27	29	1004	SSE	14	13	1.4	4	91	14% (0.0 mm)
	0600			29	1005	SSE	9	8	1.3	4	94	16% (0.0 mm)
	1200			29	1006	SSE	8	7	1.2	3	68	20% (0.0 mm)
	1800			29	1003	SSE	6	5	1.1	3	80	14% (0.0 mm)
18-09-24 (Wednesday)	0001	34	27	29	1005	S	7	6	1.1	3	91	16% (0.0 mm)
	0600			28	1004	SSE	6	5	1.1	3	93	20% (0.0 mm)
	1200			29	1005	S	4	3	1.1	3	69	14% (0.0 mm)
	1800			29	1003	SSW	6	5	1.1	3	80	16% (0.0 mm)

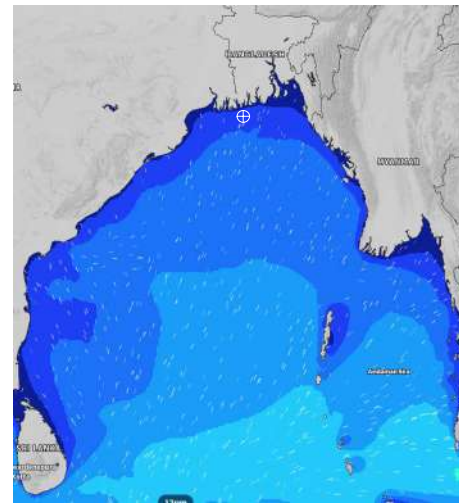
**15 Sep 2024**



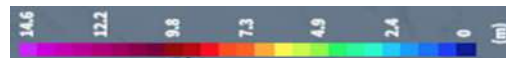
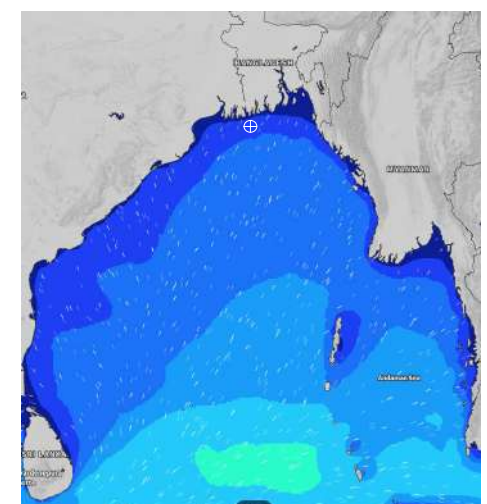
**16 Sep 2024**



**17 Sep 2024**



**18 Sep 2024**



Significant wave height (m)



## MARINE WEATHER FORECAST (15- 22 Sep 2024)

### 10 NM SOUTH OF MONGLA FAIRWAY (21° 16' N, 089° 34' E)



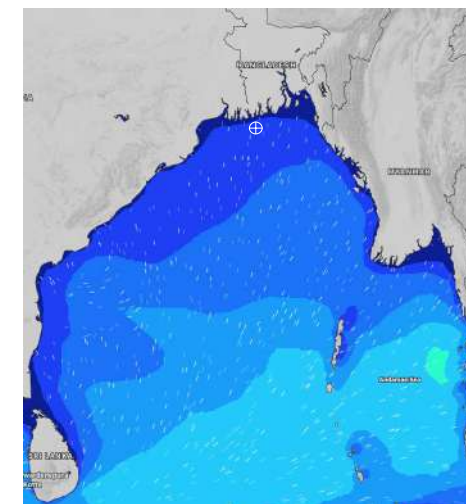
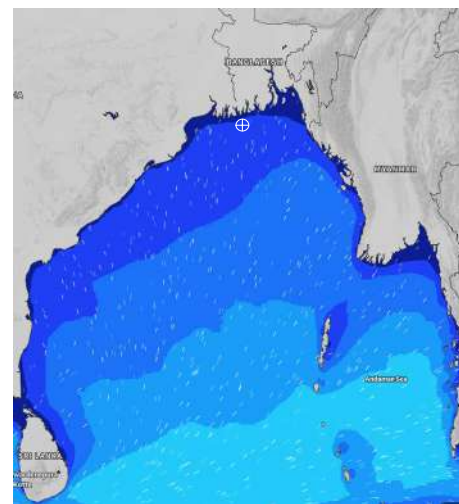
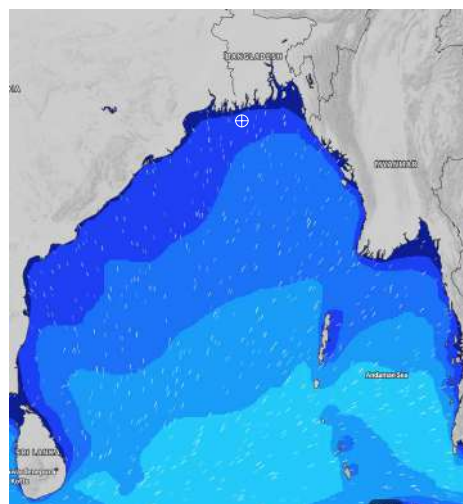
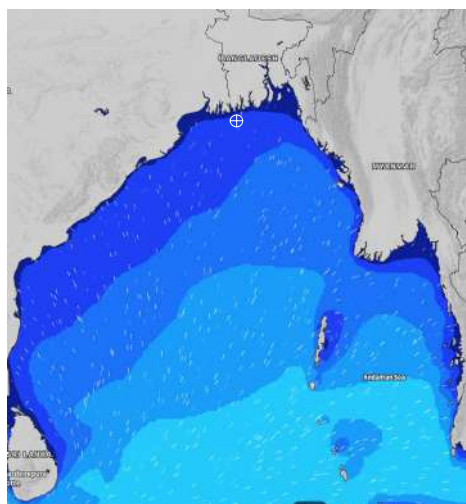
Date	Time	Air Temp (°C)		Sea Surface Temp (°C)	Baro Pressure (mbar)	Wind Direction	Wind Spd (kts)		Wave Ht (m)	Sea State	Humidity (%)	Prob of Rain
		Max	Min				Max	Avg				
19-09-24 (Thursday)	0001	33	27	29	1005	SSW	6	5	1.1	3	91	50% (0.7 mm)
	0600			29	1004	SW	6	5	1.1	3	94	56% (0.6 mm)
	1200			29	1005	SW	5	4	1.0	3	68	55% (0.5 mm)
	1800			29	1003	W	6	5	1.0	3	79	21% (0.0 mm)
20-09-24 (Friday)	0001	34	27	29	1005	S	6	5	0.9	3	92	27% (0.1 mm)
	0600			29	1004	WSW	7	6	0.9	3	94	46% (0.5 mm)
	1200			28	1005	SW	9	8	1.0	3	70	68% (0.6 mm)
	1800			29	1003	SSW	6	5	1.1	3	80	18% (0.0 mm)
21-09-24 (Saturday)	0001	34	28	29	1005	S	9	8	1.0	3	91	26% (0.1 mm)
	0600			29	1004	S	5	4	1.0	3	93	48% (0.5 mm)
	1200			28	1005	S	4	3	1.0	3	70	69% (0.7 mm)
	1800			29	1002	SE	5	4	1.0	3	79	30% (0.1 mm)
22-09-24 (Sunday)	0001	33	27	29	1005	S	11	10	1.0	3	92	26% (0.1 mm)
	0600			29	1004	S	10	9	1.0	3	93	42% (0.4 mm)
	1200			28	1004	S	8	7	1.0	3	72	60% (0.5 mm)
	1800			29	1002	SE	4	3	1.0	3	80	23% (0.0 mm)

**19 Sep 2024**

**20 Sep 2024**

**21 Sep 2024**

**22 Sep 2024**



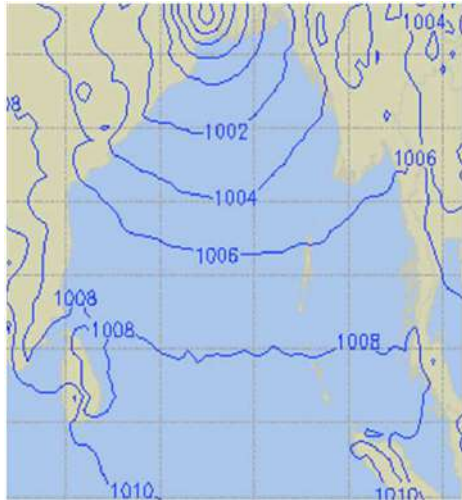
Significant wave height (m)



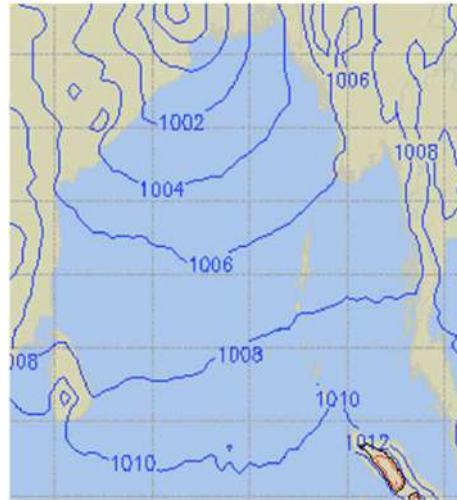
# PREDICTED SURFACE PRESSURE FORECAST (15- 21 Sep 2024)



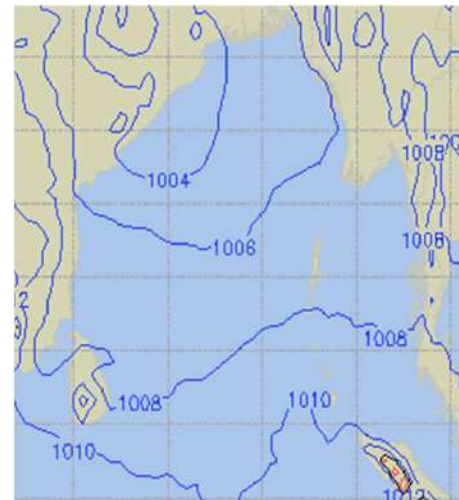
**15 Sep 2024**



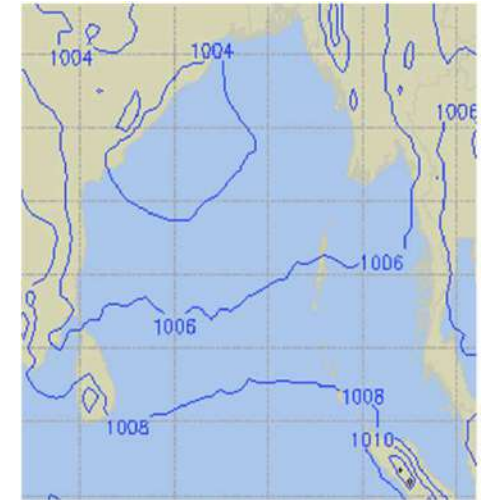
**16 Sep 2024**



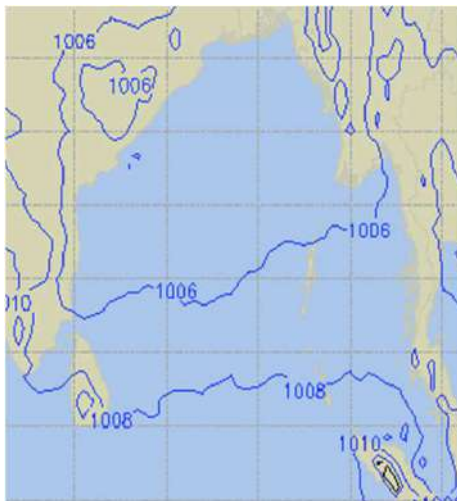
**17 Sep 2024**



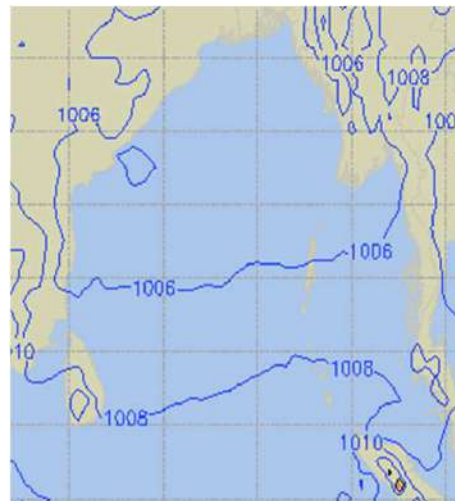
**18 Sep 2024**



**19 Sep 2024**



**20 Sep 2024**



**21 Sep 2024**

