

**MARINE WEATHER FORECAST- NEAR AUTHORITY BUOY (Lat 22° 12' N, Long 091° 38' E)**

**DATE : 15 to 22 July 2024**

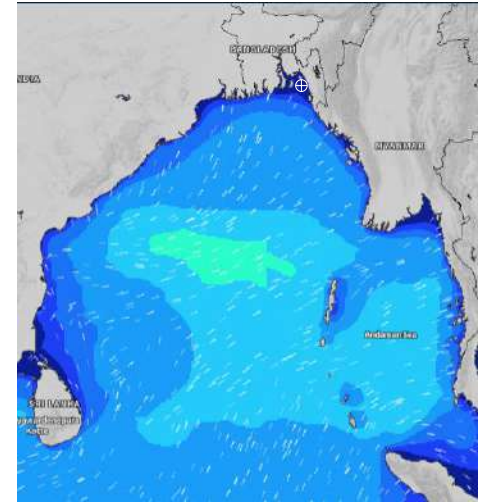
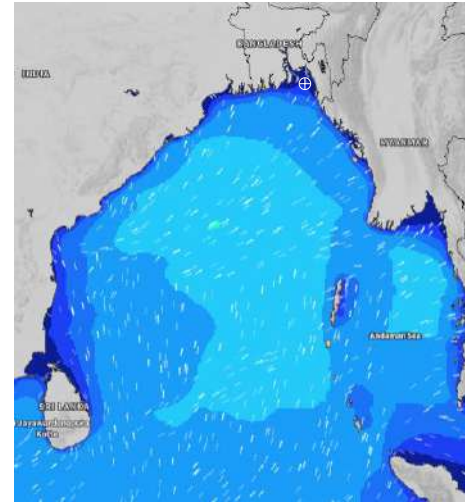
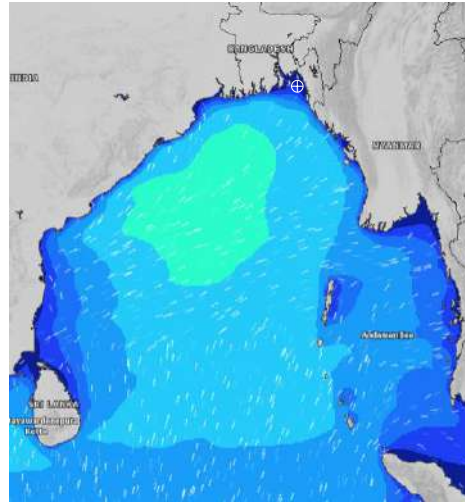
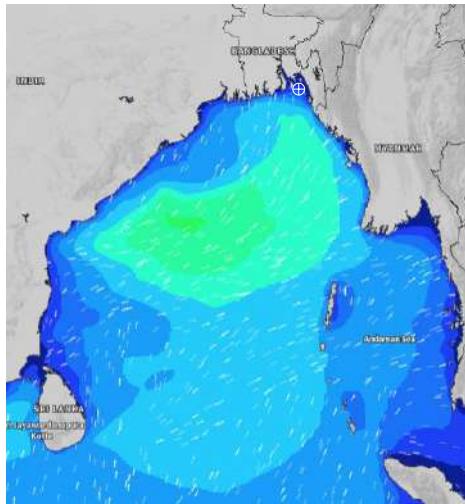
Date	Time	Max Wind Spd (kts)	Wind Direction	Wave Ht (m)	Sea State	Baro Pressure	Air Temp		Sea Surface Temp	Humidity (%)	Prb of Rain (%)	Sea State	Wave Ht (m)
							Max	Min					
15-07-24	0001	26	SE	0.3	2	1001	33	27	28	87%	15% (0.0 mm)	0	0
	0600	24	ESE	0.3	2	1002			27	89%	11% (0.0 mm)	1	0 - 0.1
	1200	18	S	0.3	2	1002			30	71%	20% (0.0 mm)	2	0.1 - 0.5
	1800	22	SSE	0.4	2	1002			29	81%	10% (0.0 mm)	3	0.5 - 1.25
16-07-24	0001	23	SSE	0.4	2	1004	32	27	28	84%	12% (0.0 mm)	4	1.25 - 2.5
	0600	19	SSE	0.3	2	1004			27	88%	14% (0.0 mm)	5	2.5 - 4.0
	1200	15	SSW	0.3	2	1003			29	73%	38% (0.2 mm)	6	4.0 - 6.0
	1800	15	SSW	0.3	2	1002			28	84%	39% (0.2 mm)	7	6.0 - 9.0
17-07-24	0001	16	SSE	0.3	2	1003	32	27	28	91%	23% (0.0 mm)	8	9.0 - 14.0
	0600	15	SSE	0.2	2	1002			27	93%	15% (0.0 mm)	9	Over 14.0
	1200	10	SW	0.2	2	1002			28	76%	30% (0.2 mm)		
	1800	8	SSW	0.2	2	1000			28	84%	24% (0.0 mm)		
18-07-24	0001	10	SSE	0.1	1	1002	32	27	28	91%	36% (0.2 mm)		
	0600	6	SE	0.1	1	1001			27	93%	23% (0.0 mm)		
	1200	6	SW	0.1	1	1001			28	77%	43% (0.2 mm)		
	1800	5	WSW	0.1	1	998			29	84%	35% (0.2 mm)		

**15 July 24 Mon (Probability 98%)**

**16 July 24 Tue (Probability 95%)**

**17 July 24 Wed Probability 90%**

**18 July 24 Thu (Probability 80%)**



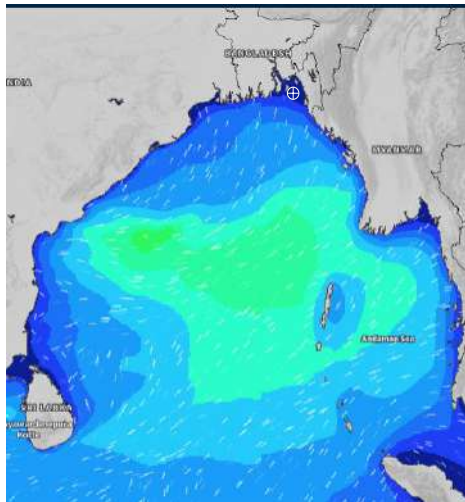
Significant wave height (m)

# MARINE WEATHER FORECAST- NEAR AUTHORITY BUOY (Lat 22° 12' N, Long 091° 38' E)

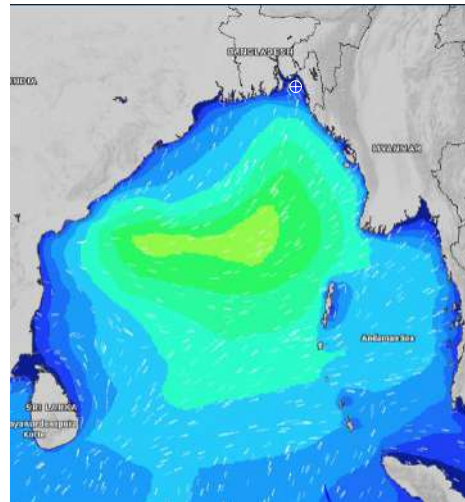
**DATE : 15 to 22 July 2024**

Date	Time	Max Wind Spd (kts)	Wind Direction	Wave Ht (m)	Sea State	Baro Pressure	Air Temp		Sea Surface Temp	Humidity (%)	Prob of Rain (%)	Sea State	Wave Ht (m)
							Max	Min					
19-07-24	0001	6	SSE	0.1	1	999	32	27	28	91%	45% (0.3 mm)	0	0
	0600	6	E	0.1	1	999			27	93%	24% (0.1 mm)	1	0 - 0.1
	1200	7	W	0.1	1	998			29	75%	47% (0.3 mm)	2	0.1 - 0.5
	1800	11	SSW	0.2	2	996			29	85%	50% (0.4 mm)	3	0.5 - 1.25
20-07-24	0001	27	SE	0.4	2	998	32	27	28	91%	51% (0.6 mm)	4	1.25 - 2.5
	0600	27	SE	0.4	2	998			28	93%	45% (0.4 mm)	5	2.5 - 4.0
	1200	26	SSE	0.5	2	999			30	77%	34% (0.2 mm)	6	4.0 - 6.0
	1800	28	SSE	0.5	2	998			29	86%	33% (0.2 mm)	7	6.0 - 9.0
21-07-24	0001	29	SE	0.5	2	1000	31	26	28	90%	39% (0.2 mm)	8	9.0 - 14.0
	0600	27	SE	0.4	2	999			28	91%	30% (0.2 mm)	9	Over 14.0
	1200	23	SSE	0.4	2	1000			28	74%	64% (0.5 mm)		
	1800	26	SSE	0.4	2	999			28	84%	51% (0.4 mm)		
22-07-24	0001	26	SSE	0.4	2	1002	29	26	28	90%	39% (0.2 mm)		
	0600	23	SE	0.4	2	1001			27	91%	30% (0.2 mm)		
	1200	17	S	0.3	2	1000			29	74%	64% (0.5 mm)		
	1800	19	S	0.3	2	999			29	84%	51% (0.4 mm)		

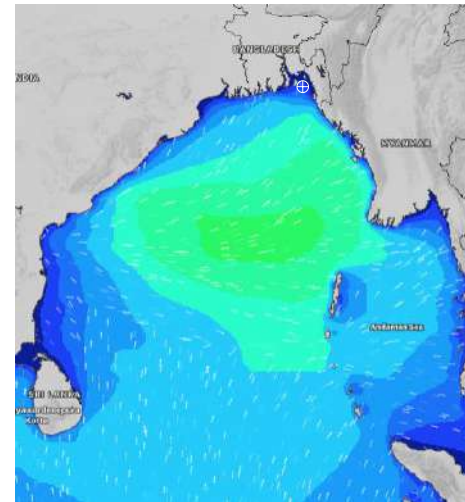
**19 July 24 Fri (Probability 70%)**



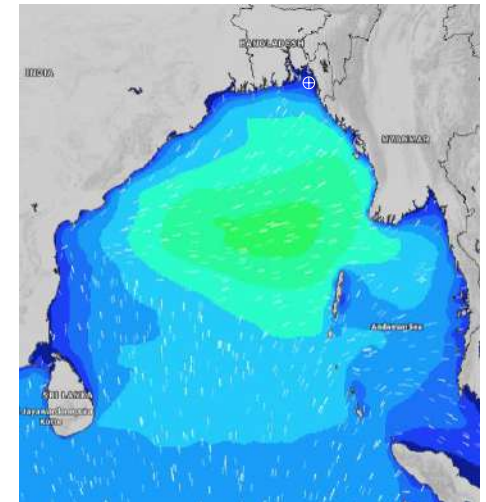
**20 July 24 Sat (Probability 60%)**



**21 July 24 Sun (Probability 50%)**



**22 July 24 Mon (Probability 50%)**



Significant wave height (m)

# MARINE WEATHER FORECAST- 20 NM WEST OF ELEPHANT POINT (Lat 21° 10' N, Long 091° 42' E)

**DATE : 15 to 22 July 2024**

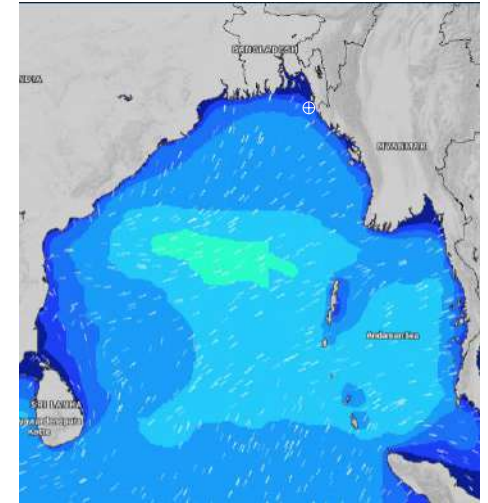
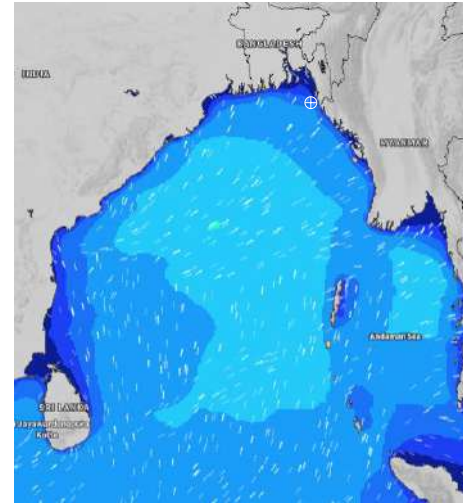
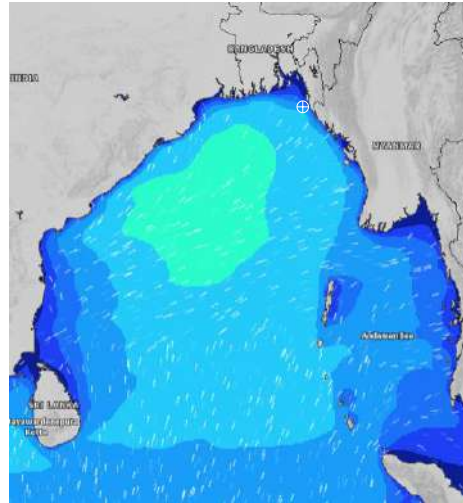
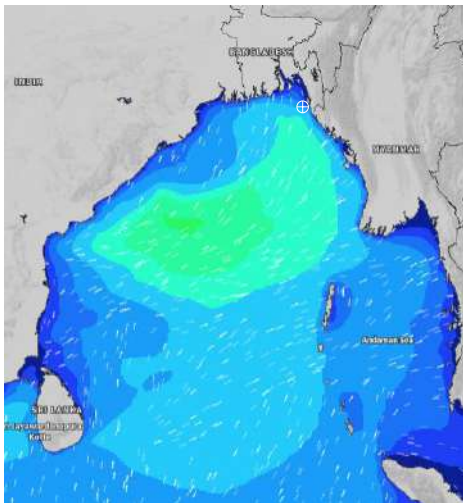
Date	Time	Max Wind Spd (kts)	Wind Direction	Wave Ht (m)	Sea State	Baro Pressure	Air Temp		Sea Surface Temp	Humidity (%)	Prob of Rain (%)	Sea State	Wave Ht (m)
							Max	Min					
15-07-24	0001	30	SE	2.2	4	1001	31	27	29	87%	17% (0.0 mm)	0	0
	0600	29	SE	2.6	5	1002			28	80%	12% (0.0 mm)	1	0 - 0.1
	1200	29	SE	2.6	5	1003			28	80%	56% (0.3 mm)	2	0.1 - 0.5
	1800	23	SSE	2.4	4	1002			28	85%	21% (0.0 mm)	3	0.5 - 1.25
16-07-24	0001	20	SSE	2.2	4	1004	31	26	28	88%	41% (0.3 mm)	4	1.25 - 2.5
	0600	17	SSE	2.2	4	1004			28	91%	40% (0.3 mm)	5	2.5 - 4.0
	1200	16	SSE	2.1	4	1004			28	78%	41% (0.3 mm)	6	4.0 - 6.0
	1800	12	S	1.9	4	1002			29	84%	24% (0.0 mm)	7	6.0 - 9.0
17-07-24	0001	14	SSE	1.8	4	1003	32	27	28	90%	21% (0.2 mm)	8	9.0 - 14.0
	0600	14	SE	1.6	4	1002			28	93%	11% (0.0 mm)	9	Over 14.0
	1200	14	SSE	1.6	4	1002			28	78%	48% (0.4 mm)		
	1800	9	S	1.5	4	1000			29	87%	36% (0.2 mm)		
18-07-24	0001	10	SSE	1.4	4	1002	32	27	29	90%	34% (0.2 mm)		
	0600	9	SE	1.4	4	1001			28	92%	17% (0.0 mm)		
	1200	8	S	1.3	4	1001			29	78%	30% (0.2 mm)		
	1800	6	SSW	1.3	4	998			29	85%	24% (0.0 mm)		

**15 July 24 Mon (Probability 98%)**

**16 July 24 Tue (Probability 95%)**

**17 July 24 Wed Probability 90%**

**18 July 24 Thu (Probability 80%)**



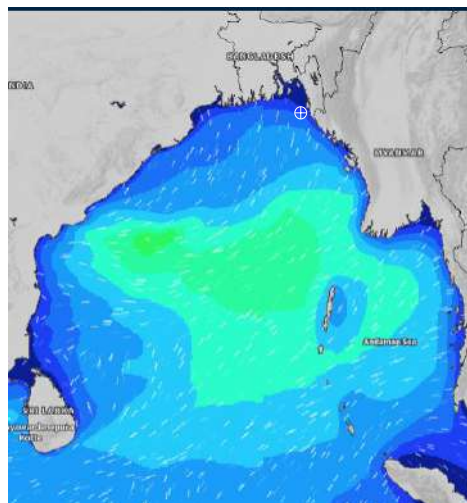
Significant wave height (m)

# MARINE WEATHER FORECAST- 20 NM WEST OF ELEPHANT POINT (Lat 21° 10' N, Long 091° 42' E)

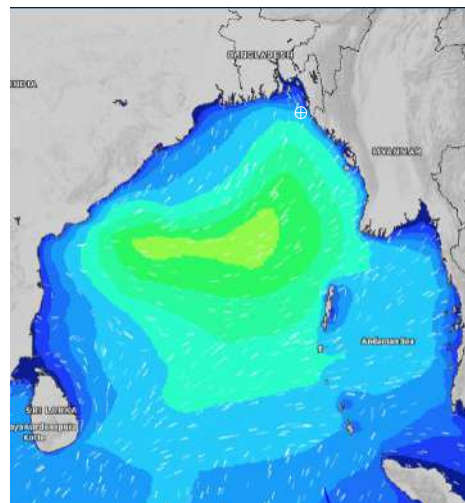
**DATE : 15 to 22 July 2024**

Date	Time	Max Wind Spd (kts)	Wind Direction	Wave Ht (m)	Sea State	Baro Pressure	Air Temp		Sea Surface Temp	Humidity (%)	Prob of Rain (%)	Sea State	Wave Ht (m)
							Max	Min					
19-07-24	0001	7	SSE	1.3	4	1000	31	27	29	90%	37% (0.2 mm)	0	0
	0600	8	ESE	1.2	3	999			28	91%	24% (0.1 mm)	1	0 - 0.1
	1200	10	SSE	1.3	4	998			28	77%	47% (0.3 mm)	2	0.1 - 0.5
	1800	25	ESE	1.4	4	996			29	87%	56% (0.4 mm)	3	0.5 - 1.25
20-07-24	0001	25	SSE	2.2	4	998	31	26	28	90%	60% (0.6 mm)	4	1.25 - 2.5
	0600	28	SSE	2.6	5	998			28	91%	45% (0.4 mm)	5	2.5 - 4.0
	1200	31	SSE	2.9	5	999			28	80%	72% (0.7 mm)	6	4.0 - 6.0
	1800	28	SSE	2.8	5	998			28	87%	67% (0.5 mm)	7	6.0 - 9.0
21-07-24	0001	29	SSE	2.9	5	1000	30	26	28	90%	56% (0.4 mm)	8	9.0 - 14.0
	0600	20	S	2.6	5	999			28	92%	60% (0.6 mm)	9	Over 14.0
	1200	22	SSE	2.4	4	1001			28	87%	45% (0.4 mm)		
	1800	22	SSE	2.3	4	999			28	90%	60% (0.7 mm)		
22-07-24	0001	19	SSE	2.2	4	1002	29	26	28	90%	56% (0.4 mm)		
	0600	17	SSE	2.0	4	1001			28	92%	60% (0.6 mm)		
	1200	18	SSE	2.0	4	1001			28	87%	45% (0.4 mm)		
	1800	15	SE	1.9	4	999			28	90%	60% (0.7 mm)		

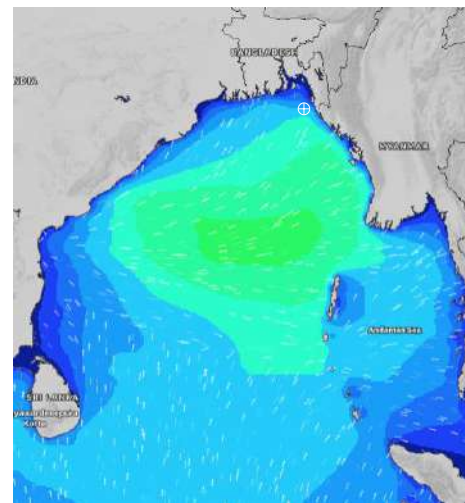
**19 July 24 Fri (Probability 70%)**



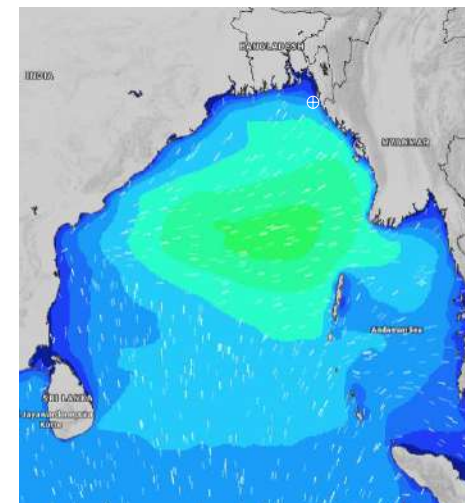
**20 July 24 Sat (Probability 60%)**



**21 July 24 Sun (Probability 50%)**



**22 July 24 Mon (Probability 50%)**



Significant wave height (m)

# MARINE WEATHER FORECAST- 15 NM WEST OF ST. MARTIN'S LIGHT HOUSE (Lat 20° 37'N, Long 092° 03'E)

**DATE : 15 to 22 July 2024**

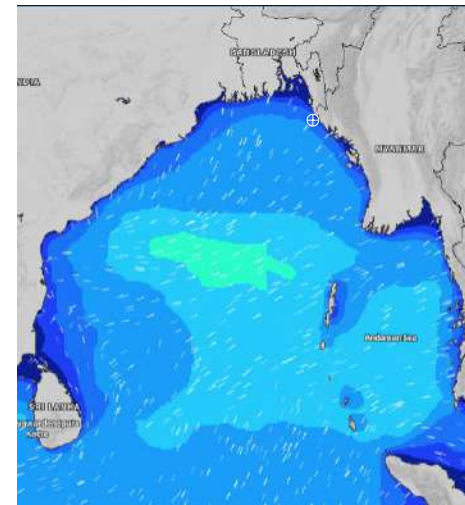
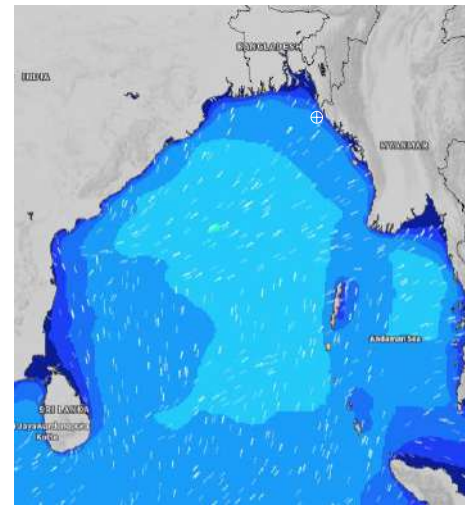
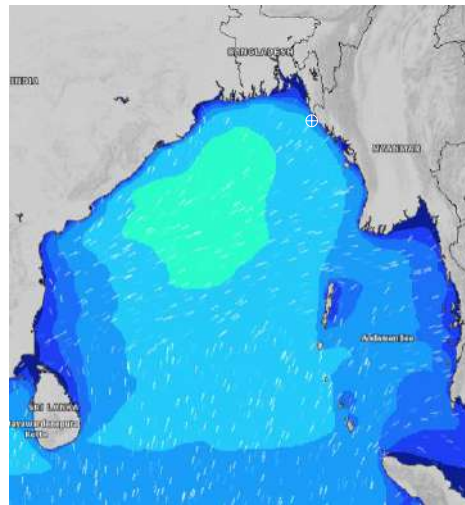
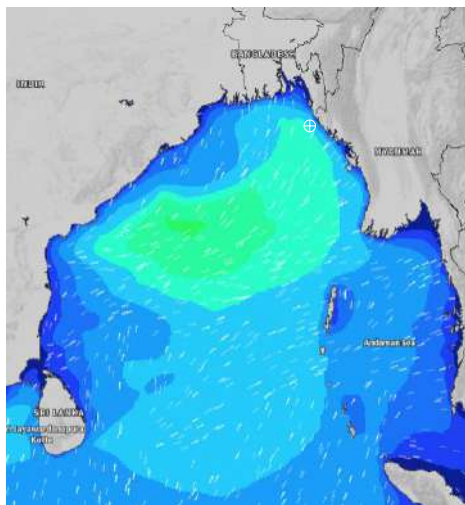
Date	Time	Max Wind Spd (kts)	Wind Direction	Wave Ht (m)	Sea State	Baro Pressure	Air Temp		Sea Surface Temp	Humidity (%)	Prob of Rain(%)	Sea State	Wave Ht (m)
							Max	Min					
15-07-24	0001	29	SSE	2.7	5	1001	30	26	29	90%	64% (0.3 mm)	0	0
	0600	25	SE	3.2	5	1001			28	91%	46% (0.4 mm)	1	0 - 0.1
	1200	27	SSE	3.2	5	1003			28	87%	90% (3.4 mm)	2	0.1 - 0.5
	1800	21	SSE	2.9	5	1002			28	89%	45% (0.2 mm)	3	0.5 - 1.25
16-07-24	0001	21	S	2.8	5	1004	30	26	28	91%	75% (0.6 mm)	4	1.25 - 2.5
	0600	16	S	2.8	5	1003			28	94%	55% (0.4 mm)	5	2.5 - 4.0
	1200	14	S	2.7	5	1004			28	85%	61% (0.5 mm)	6	4.0 - 6.0
	1800	12	S	2.5	4	1002			28	87%	24% (0.1 mm)	7	6.0 - 9.0
17-07-24	0001	12	SSE	2.3	4	1004	31	27	29	91%	35% (0.2 mm)	8	9.0 - 14.0
	0600	8	SE	2.1	4	1002			28	94%	30% (0.2 mm)	9	Over 14.0
	1200	11	SE	2.0	4	1003			29	81%	34% (0.2 mm)		
	1800	8	S	1.9	4	1000			29	87%	34% (0.2 mm)		
18-07-24	0001	7	SSE	1.8	4	1002	31	26	29	90%	53% (0.4 mm)		
	0600	6	ESE	1.8	4	1000			28	93%	24% (0.1 mm)		
	1200	10	ESE	1.7	4	1001			29	81%	34% (0.2 mm)		
	1800	8	SSE	1.7	4	998			29	87%	34% (0.2 mm)		

**15 July 24 Mon (Probability 98%)**

**16 July 24 Tue (Probability 95%)**

**17 July 24 Wed Probability 90%**

**18 July 24 Thu (Probability 80%)**



Significant wave height (m)

# MARINE WEATHER FORECAST- 15 NM WEST OF ST. MARTIN'S LIGHT HOUSE (Lat 20° 37'N, Long 092° 03'E)

**DATE : 15 to 22 July 2024**

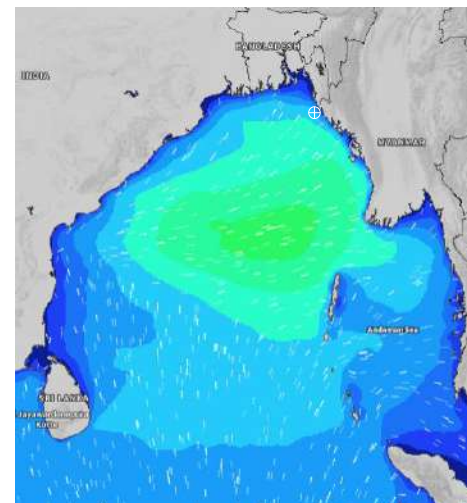
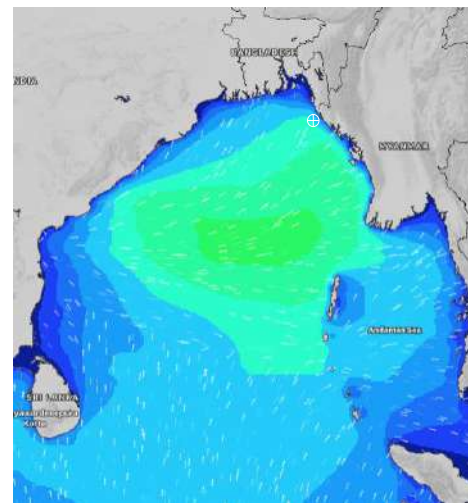
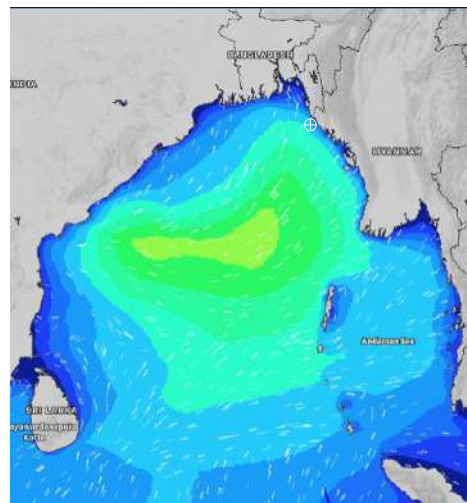
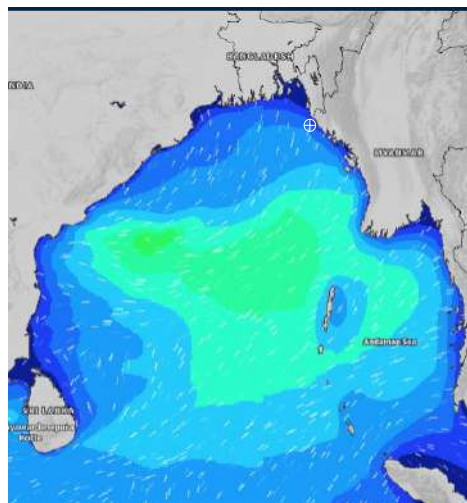
Date	Time	Max Wind Spd (kts)	Wind Direction	Wave Ht (m)	Sea State	Baro Pressure	Air Temp		Sea Surface Temp	Humidity (%)	Prob of Rain (%)	Sea State	Wave Ht (m)
							Max	Min					
19-07-24	0001	11	SE	1.7	4	1000	30	26	29	90%	43% (0.2 mm)	0	0
	0600	11	ESE	1.7	4	999			29	91%	39% (0.2 mm)	1	0 - 0.1
	1200	20	SE	1.8	4	998			28	83%	52% (0.4 mm)	2	0.1 - 0.5
	1800	24	SE	2.3	4	996			28	87%	68% (0.5 mm)	3	0.5 - 1.25
20-07-24	0001	22	SSW	3.1	5	998	29	26	28	90%	64% (0.6 mm)	4	1.25 - 2.5
	0600	24	S	3.3	5	998			28	91%	75% (0.7 mm)	5	2.5 - 4.0
	1200	30	SSE	3.5	5	1000			28	86%	43% (0.1 mm)	6	4.0 - 6.0
	1800	29	SSE	3.7	5	998			28	90%	34% (0.2 mm)	7	6.0 - 9.0
21-07-24	0001	29	S	3.7	5	1001	29	26	29	91%	64% (0.6 mm)	8	9.0 - 14.0
	0600	26	S	3.6	5	999			28	93%	75% (0.7 mm)	9	Over 14.0
	1200	23	S	3.2	5	1002			28	90%	43% (0.1 mm)		
	1800	22	S	3.1	5	1000			28	90%	34% (0.2 mm)		
22-07-24	0001	19	S	2.9	5	1002	28	26	28	91%	64% (0.6 mm)		
	0600	14	S	2.7	5	1000			28	93%	75% (0.7 mm)		
	1200	14	S	2.7	5	1002			28	90%	43% (0.1 mm)		
	1800	12	S	2.6	5	999			28	90%	34% (0.2 mm)		

**19 July 24 Fri (Probability 70%)**

**20 July 24 Sat (Probability 60%)**

**21 July 24 Sun (Probability 50%)**

**22 July 24 Mon (Probability 50%)**



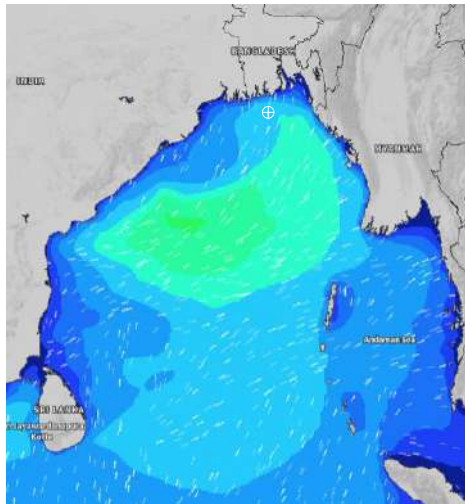
Significant wave height (m)

# MARINE WEATHER FORECAST- 40 NM ESE OF PAYRA FAIRWAY (Lat 21° 07' N, Long 090° 45' E)

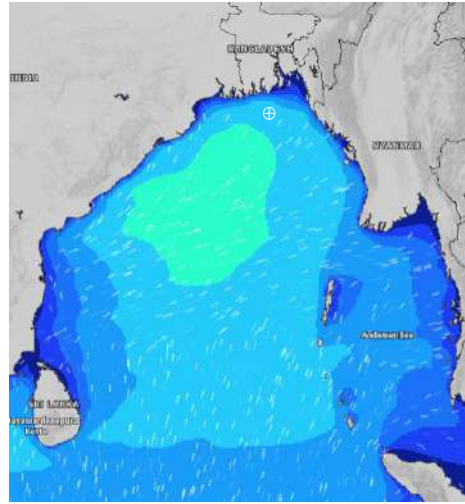
**DATE : 15 to 22 July 2024**

Date	Time	Max Wind Spd (kts)	Wind Direction	Wave Ht (m)	Sea State	Baro Pressure	Air Temp		Sea Surface Temp	Humidity (%)	Prob of Rain (%)	Sea State	Wave Ht (m)
							Max	Min					
15-07-24	0001	31	SE	2.8	5	999	31	28	29	87%	24% (0.0 mm)	0	0
	0600	28	SE	3.3	5	1000			29	88%	15% (0.2 mm)	1	0 - 0.1
	1200	29	SE	3.3	5	1001			28	85%	62% (0.3 mm)	2	0.1 - 0.5
	1800	23	SSE	3.0	5	1000			29	85%	18% (0.0 mm)	3	0.5 - 1.25
16-07-24	0001	22	S	2.9	5	1002	31	28	28	87%	43% (0.2 mm)	4	1.25 - 2.5
	0600	17	S	3.0	5	1002			28	90%	49% (0.4 mm)	5	2.5 - 4.0
	1200	14	S	2.8	5	1003			28	82%	41% (0.2 mm)	6	4.0 - 6.0
	1800	11	S	2.6	5	1001			29	84%	10% (0.0 mm)	7	6.0 - 9.0
17-07-24	0001	14	S	2.4	4	1003	31	28	29	88%	31% (0.2 mm)	8	9.0 - 14.0
	0600	7	SSE	2.2	4	1002			28	90%	30% (0.2 mm)	9	Over 14.0
	1200	10	SSE	2.1	4	1002			29	79%	23% (0.0 mm)		
	1800	8	S	2.0	4	1000			29	82%	10% (0.0 mm)		
18-07-24	0001	11	SSE	1.9	4	1001	31	28	29	88%	41% (0.2 mm)		
	0600	8	SE	1.9	4	1001			29	90%	34% (0.2mm)		
	1200	9	SE	1.8	4	1001			29	79%	23% (0.0 mm)		
	1800	7	SSE	1.7	4	998			29	82%	10% (0.0 mm)		

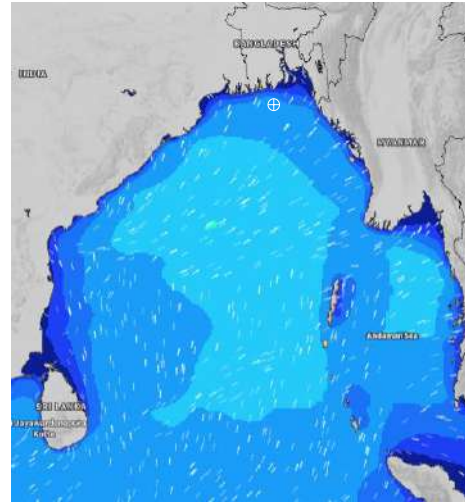
**15 July 24 Mon (Probability 98%)**



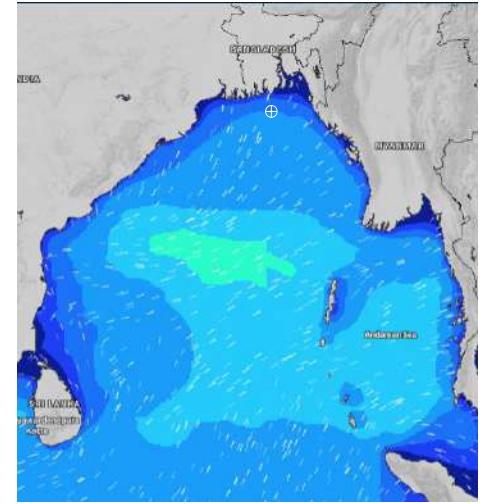
**16 July 24 Tue (Probability 95%)**



**17 July 24 Wed Probability 90%**



**18 July 24 Thu (Probability 80%)**



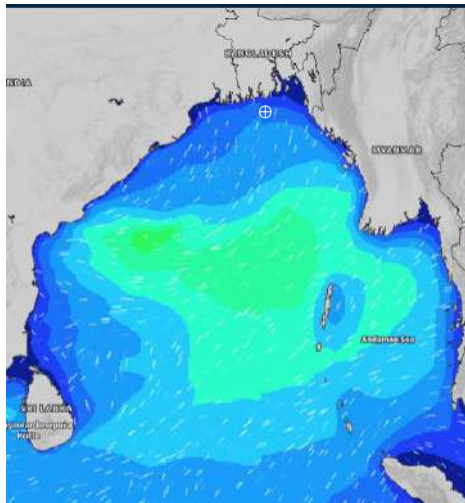
Significant wave height (m)

# MARINE WEATHER FORECAST- 40 NM ESE OF PAYRA FAIRWAY (Lat 21° 07' N, Long 090° 45' E)

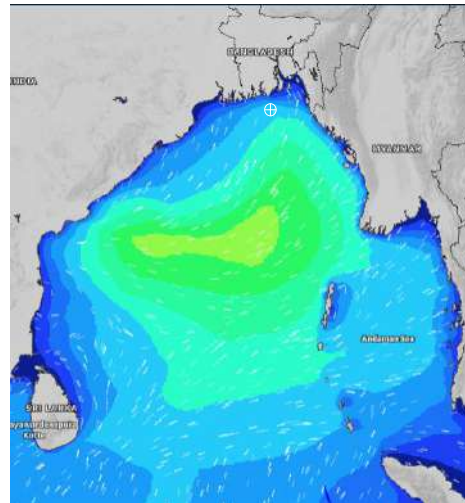
**DATE : 15 to 22 July 2024**

Date	Time	Max Wind Spd (kts)	Wind Direction	Wave Ht (m)	Sea State	Baro Pressure	Air Temp		Sea Surface Temp	Humidity (%)	Prob of Rain (%)	Sea State	Wave Ht (m)
							Max	Min					
19-07-24	0001	7	SSE	1.7	4	1000	31	28	29	87%	36% (0.2 mm)	0	0
	0600	9	ESE	1.6	4	999			29	90%	32% (0.2 mm)	1	0 - 0.1
	1200	17	ESE	1.7	4	998			29	80%	24% (0.0 mm)	2	0.1 - 0.5
	1800	23	ESE	1.9	4	996			29	83%	23% (0.0 mm)	3	0.5 - 1.25
20-07-24	0001	20	S	2.5	4	996	31	28	29	88%	55% (0.4 mm)	4	1.25 - 2.5
	0600	27	SSE	3.3	5	996			28	90%	44% (0.4 mm)	5	2.5 - 4.0
	1200	27	S	3.6	5	997			28	83%	43% (0.4 mm)	6	4.0 - 6.0
	1800	25	S	3.5	5	996			29	86%	24% (0.1 mm)	7	6.0 - 9.0
21-07-24	0001	25	SSW	3.5	5	998	30	27	28	88%	61% (0.6 mm)	8	9.0 - 14.0
	0600	19	S	3.2	5	998			28	90%	44% (0.4 mm)	9	Over 14.0
	1200	18	SSW	3.1	5	999			29	86%	43% (0.4 mm)		
	1800	16	S	2.9	5	998			29	87%	24% (0.1 mm)		
22-07-24	0001	17	SSW	2.8	5	1001	30	27	28	88%	61% (0.6 mm)		
	0600	14	S	2.7	5	1000			28	90%	44% (0.4 mm)		
	1200	16	S	2.6	5	1000			29	86%	43% (0.4 mm)		
	1800	12	SSW	2.5	4	998			29	87%	24% (0.1 mm)		

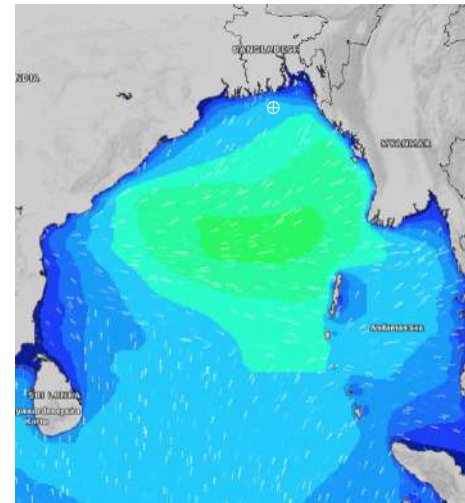
**19 July 24 Fri (Probability 70%)**



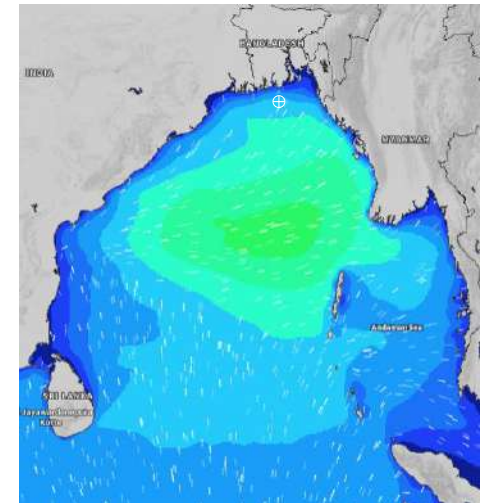
**20 July 24 Sat (Probability 60%)**



**21 July 24 Sun (Probability 50%)**



**22 July 24 Mon (Probability 50%)**



Significant wave height (m)

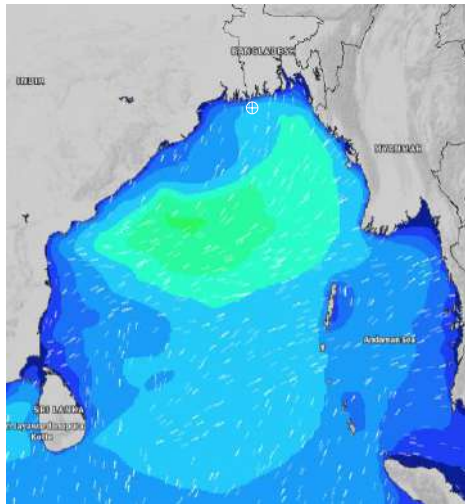


# MARINE WEATHER FORECAST- 10 NM SOUTH OF MONGLA FAIRWAY (Lat 21° 16' N, Long 089° 34' E)

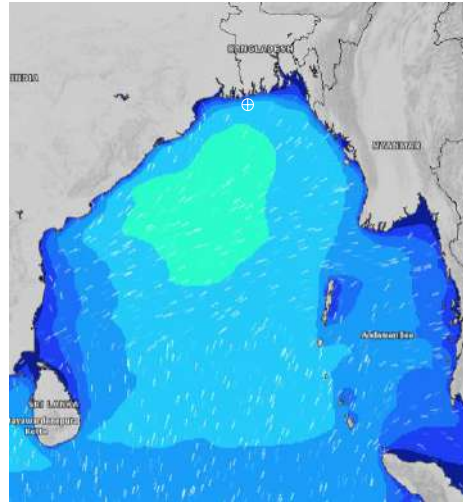
**DATE : 15 to 22 July 2024**

Date	Time	Max Wind Spd (kts)	Wind Direction	Wave Ht (m)	Sea State	Baro Pressure	Air Temp		Sea Surface Temp	Humidity (%)	Prob of Rain (%)	Sea State	Wave Ht (m)
							Max	Min					
15-07-24	0001	19	E	2.2	4	998	32	28	29	90%	12% (0.0 mm)	0	0
	0600	27	ESE	2.8	5	998			29	90%	16% (0.2 mm)	1	0 - 0.1
	1200	26	SE	3.1	5	1000			29	82%	69% (0.6 mm)	2	0.1 - 0.5
	1800	19	SSE	2.7	5	999			29	81%	11% (0.0 mm)	3	0.5 - 1.25
16-07-24	0001	20	S	2.6	5	1001	32	27	29	89%	33% (0.2 mm)	4	1.25 - 2.5
	0600	17	S	3.0	5	1001			29	91%	38% (0.2 mm)	5	2.5 - 4.0
	1200	15	S	2.8	5	1002			29	77%	66% (0.5 mm)	6	4.0 - 6.0
	1800	12	S	2.6	5	1000			29	79%	14% (0.0 mm)	7	6.0 - 9.0
17-07-24	0001	13	S	2.4	4	1002	33	28	29	90%	15% (0.0 mm)	8	9.0 - 14.0
	0600	9	S	2.2	4	1001			29	91%	31% (0.0 mm)	9	Over 14.0
	1200	9	SE	2.0	4	1002			29	73%	36% (0.2 mm)		
	1800	10	SSE	1.9	4	999			29	78%	10% (0.0 mm)		
18-07-24	0001	11	SSE	1.9	4	1001	33	27	29	90%	18% (0.0 mm)		
	0600	8	SE	1.8	4	1000			29	93%	36% (0.2 mm)		
	1200	9	SE	1.7	4	1000			29	73%	48% (0.3 mm)		
	1800	7	SE	1.7	4	998			29	78%	10% (0.0 mm)		

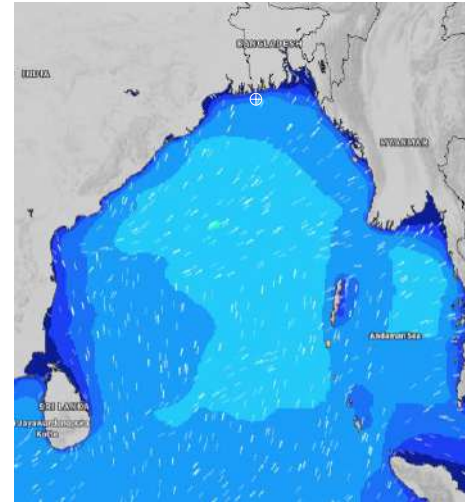
**15 July 24 Mon (Probability 98%)**



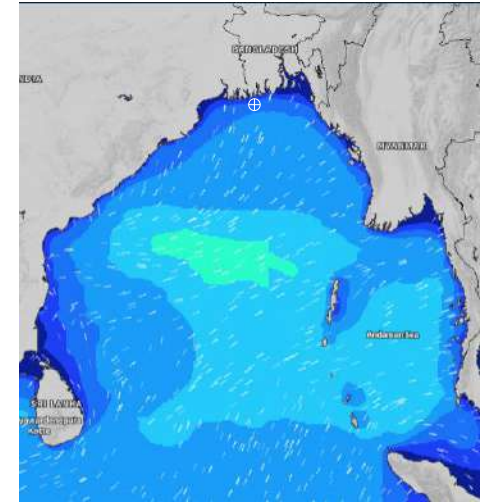
**16 July 24 Tue (Probability 95%)**



**17 July 24 Wed Probability 90%**



**18 July 24 Thu (Probability 80%)**



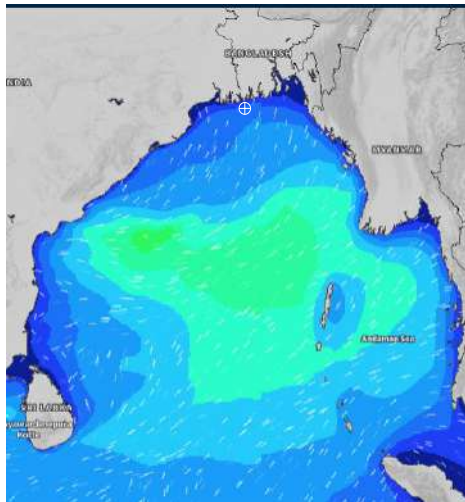
Significant wave height (m)

# MARINE WEATHER FORECAST- 10 NM SOUTH OF MONGLA FAIRWAY (Lat 21° 16' N, Long 089° 34' E)

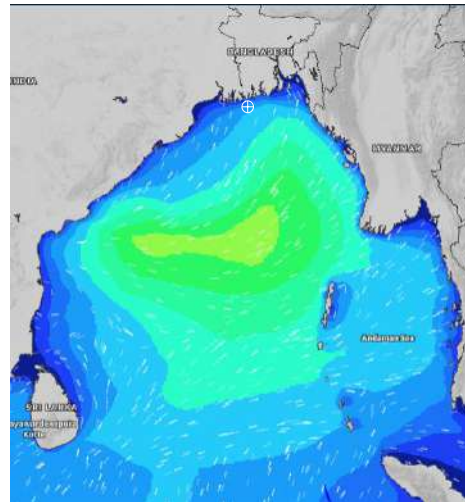
**DATE : 15 to 22 July 2024**

Date	Time	Max Wind Spd (kts)	Wind Direction	Wave Ht (m)	Sea State	Baro Pressure	Air Temp		Sea Surface Temp	Humidity (%)	Prob of Rain (%)	Sea State	Wave Ht (m)
							Max	Min					
19-07-24	0001	10	SE	1.6	4	999	32	27	29	89%	24% (0.0 mm)	0	0
	0600	7	ESE	1.5	4	998			29	90%	35% (0.2 mm)	1	0 - 0.1
	1200	13	ESE	1.6	4	998			29	73%	36% (0.2 mm)	2	0.1 - 0.5
	1800	16	E	1.7	4	996			29	75%	12% (0.0 mm)	3	0.5 - 1.25
20-07-24	0001	15	E	1.9	4	995	32	27	28	88%	45% (0.7 mm)	4	1.25 - 2.5
	0600	17	SE	2.5	4	995			28	91%	32% (0.4 mm)	5	2.5 - 4.0
	1200	19	SE	3.0	5	995			29	77%	52% (0.4 mm)	6	4.0 - 6.0
	1800	16	SSE	2.8	5	994			29	81%	24% (0.0 mm)	7	6.0 - 9.0
21-07-24	0001	18	SSW	2.7	5	997	32	27	29	90%	43% (0.2 mm)	8	9.0 - 14.0
	0600	18	SSW	2.8	5	997			29	92%	57% (0.4 mm)	9	Over 14.0
	1200	16	S	2.8	5	998			29	80%	63% (0.5 mm)		
	1800	16	SSW	2.6	5	997			28	84%	24% (0.0 mm)		
22-07-24	0001	19	SSW	2.6	5	999	31	27	29	90%	43% (0.2 mm)		
	0600	14	SSW	2.5	4	998			29	92%	57% (0.4 mm)		
	1200	10	SSW	2.4	4	999			28	80%	63% (0.5 mm)		
	1800	12	SW	2.3	4	998			29	84%	24% (0.0 mm)		

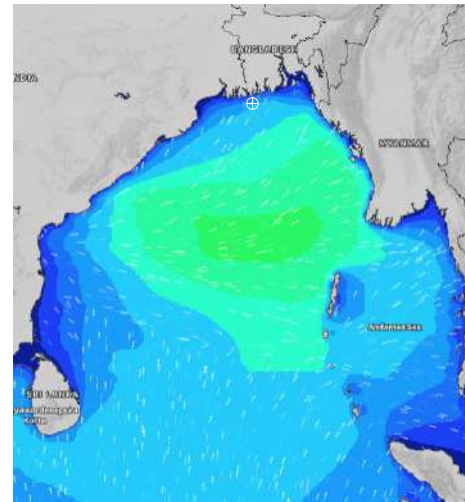
**19 July 24 Fri (Probability 70%)**



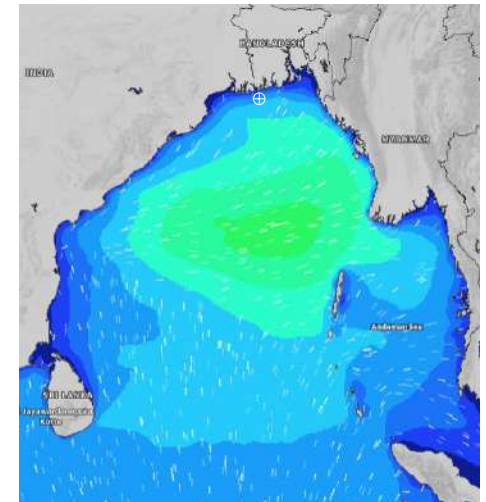
**20 July 24 Sat (Probability 60%)**



**21 July 24 Sun (Probability 50%)**



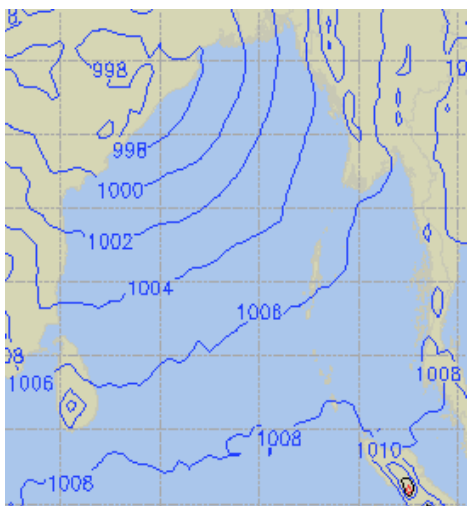
**22 July 24 Mon (Probability 50%)**



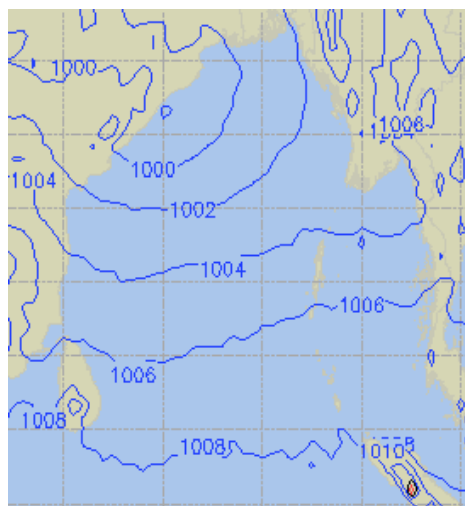
Significant wave height (m)

## PREDICTED SURFACE PRESSURE FORECAST (15 to 21 July 2024)

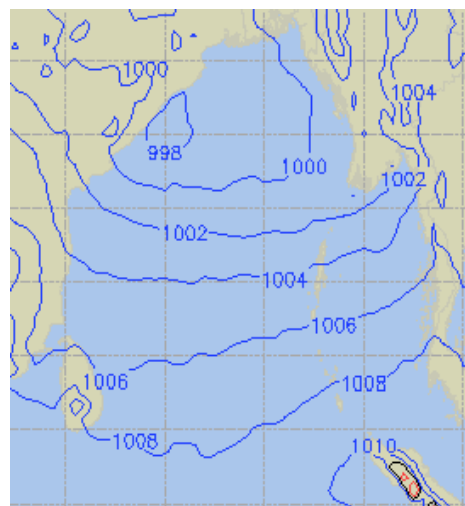
**15 July 24 Mon (Probability 98%)**



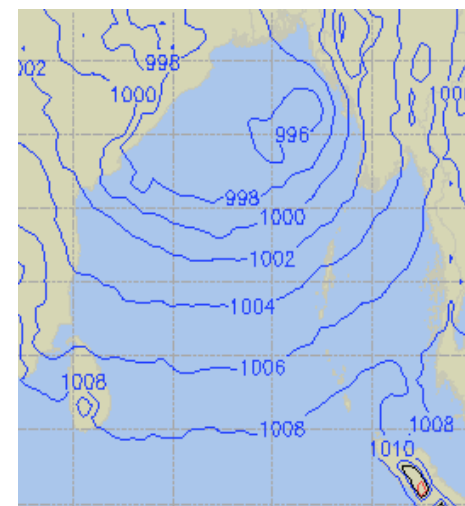
**16 July 24 Tue (Probability 95%)**



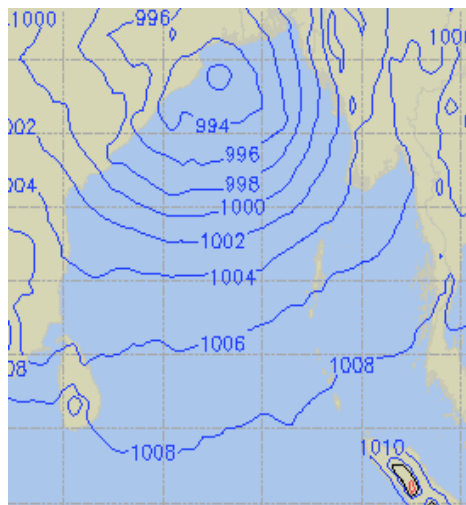
**17 July 24 Wed (Probability 90%)**



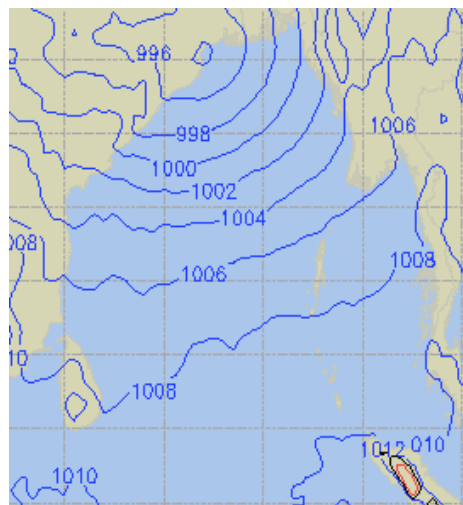
**18 July 24 Thu (Probability 80%)**



**19 July 24 Fri (Probability 70%)**



**20 July 24 Sat (Probability 60%)**



**21 July 24 Sun (Probability 50%)**

