

MARINE WEATHER FORECAST- NEAR AUTHORITY BUOY (Lat 22° 12' N, Long 091° 38' E)

DATE : 15 to 22 May 2024

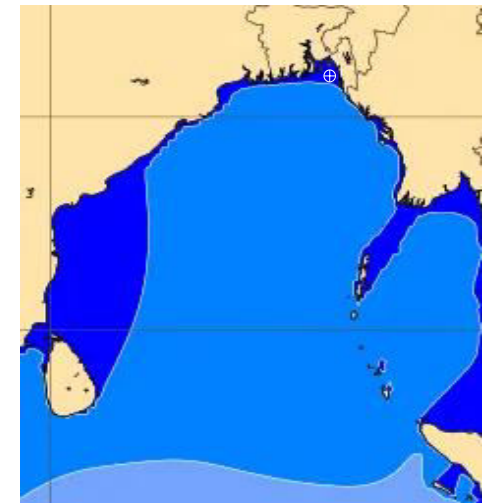
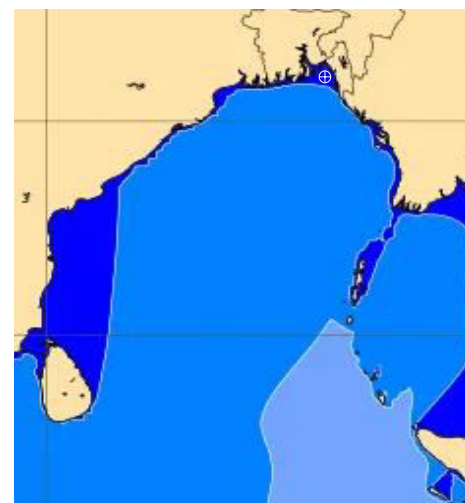
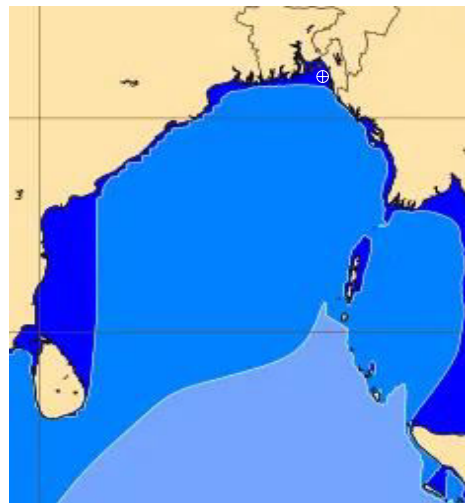
Date	Time	Max Wind Spd (kts)	Wind Direction	Wave Ht (m)	Sea State	Baro Pressure	Air Temp		Sea Surface Temp	Humidity (%)	Prob of Rain (%)	Sea State	Wave Ht (m)
							Max	Min					
15-05-24	0001	3	S	0.1	1	1009	34	24	29	81%	15% (0.0 mm)	0	0
	0600	4	ESE	0.1	1	1010			29	93%	13% (0.0 mm)	1	0 - 0.1
	1200	9	W	0.1	1	1012			30	75%	16% (0.0 mm)	2	0.1 - 0.5
	1800	12	WSW	0.3	2	1007			30	84%	14% (0.0 mm)	3	0.5 - 1.25
16-05-24	0001	7	S	0.1	1	1009	34	24	29	86%	12% (0.0 mm)	4	1.25 - 2.5
	0600	5	S	0.1	1	1010			29	92%	14% (0.0 mm)	5	2.5 - 4.0
	1200	7	WSW	0.1	1	1010			30	74%	11% (0.0 mm)	6	4.0 - 6.0
	1800	10	SW	0.2	2	1007			30	81%	15% (0.0 mm)	7	6.0 - 9.0
17-05-24	0001	9	SSE	0.1	1	1007	34	24	29	82%	13% (0.0 mm)	8	9.0 - 14.0
	0600	10	SSW	0.2	2	1008			29	93%	16% (0.0 mm)	9	Over 14.0
	1200	9	SW	0.1	1	1009			30	75%	15% (0.0 mm)		
	1800	15	SW	0.3	2	1005			30	86%	14% (0.0 mm)		
18-05-24	0001	13	S	0.2	2	1007	34	24	29	86%	12% (0.0 mm)		
	0600	11	S	0.2	2	1007			29	97%	15% (0.0 mm)		
	1200	10	SW	0.2	2	1008			30	78%	14% (0.0 mm)		
	1800	14	SSW	0.3	2	1005			30	85%	16% (0.0 mm)		

15 May 24 Wed (Probability 98%)

16 May 24 Thu (Probability 95%)

17 May 24 Fri (Probability 90%)

18 May 24 Sat (Probability 80%)



Significant wave height (m)

MARINE WEATHER FORECAST- NEAR AUTHORITY BUOY (Lat 22° 12'N, Long 091° 38'E)

DATE : 15 to 22 May 2024

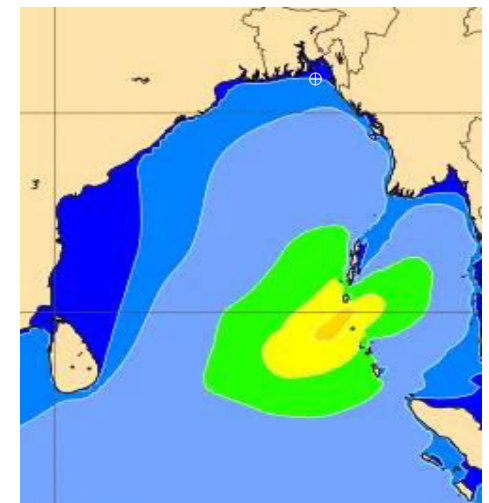
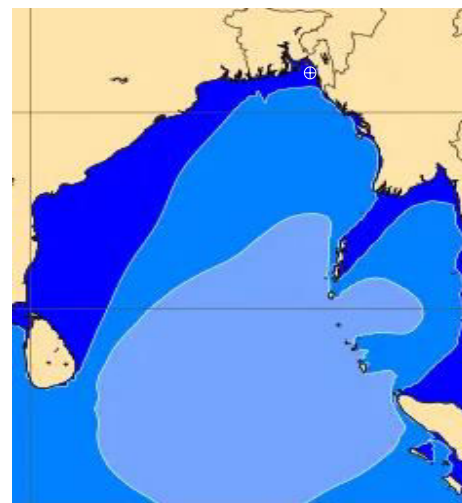
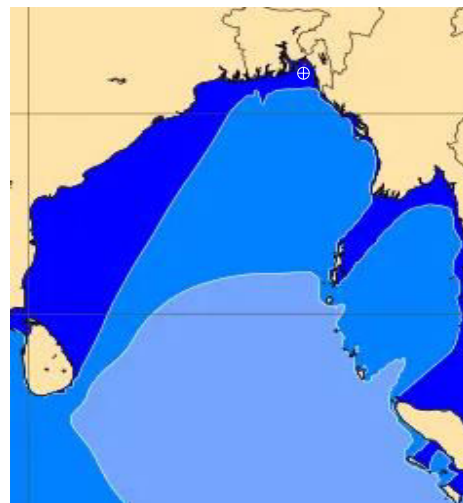
Date	Time	Max Wind Spd (kts)	Wind Direction	Wave Ht (m)	Sea State	Baro Pressure	Air Temp		Sea Surface Temp	Humidity (%)	Prob of Rain (%)	Sea State	Wave Ht (m)
							Max	Min					
19-05-24	0001	15	SSE	0.3	2	1005	34	24	29	84%	14% (0.0 mm)	0	0
	0600	17	S	0.3	2	1005			29	93%	16% (0.0 mm)	1	0 - 0.1
	1200	14	SSW	0.3	2	1006			30	75%	13% (0.0 mm)	2	0.1 - 0.5
	1800	17	SSW	0.3	2	1002			30	86%	12% (0.0 mm)	3	0.5 - 1.25
20-05-24	0001	16	SSE	0.3	2	1004	34	24	29	82%	15% (0.0 mm)	4	1.25 - 2.5
	0600	17	SE	0.4	2	1004			29	93%	14% (0.0 mm)	5	2.5 - 4.0
	1200	17	SSW	0.4	2	1005			30	75%	12% (0.0 mm)	6	4.0 - 6.0
	1800	18	SSW	0.4	2	1002			30	84%	16% (0.0 mm)	7	6.0 - 9.0
21-05-24	0001	20	SSE	0.4	2	1004	34	24	29	86%	10% (0.0 mm)	8	9.0 - 14.0
	0600	13	SE	0.3	2	1006			29	92%	12% (0.0 mm)	9	Over 14.0
	1200	9	NW	0.2	2	1006			30	74%	14% (0.0 mm)		
	1800	13	ENE	0.3	2	1002			30	81%	15% (0.0 mm)		
22-05-24	0001	7	SSW	0.2	2	1006	34	24	29	85%	16% (0.0 mm)		
	0600	8	SE	0.2	2	1005			29	96%	12% (0.0 mm)		
	1200	10	S	0.2	2	1006			30	73%	14% (0.0 mm)		
	1800	15	SSW	0.3	2	1002			30	82%	13% (0.0 mm)		

19 May 24 Sun (Probability 70%)

20 May 24 Mon (Probability 60%)

21 May 24 Tue (Probability 50%)

22 May 24 Wed (Probability 50%)



Significant wave height (m)

MARINE WEATHER FORECAST- 20 NM WEST OF ELEPHANT POINT (Lat 21° 10' N, Long 091° 42' E)

DATE : 15 to 22 May 2024

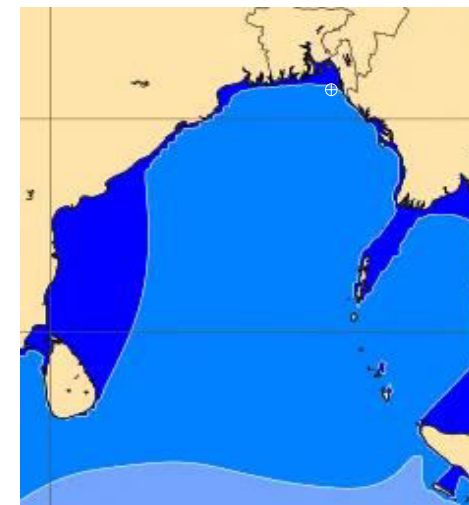
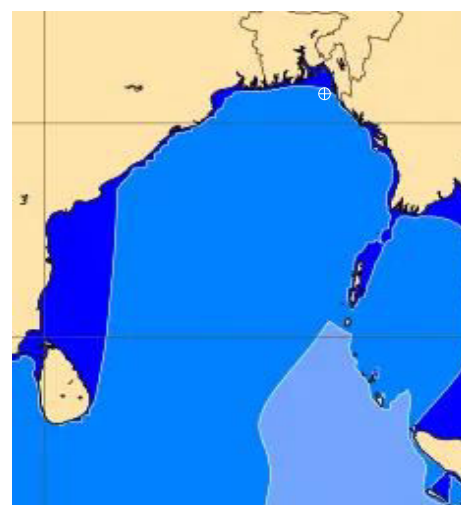
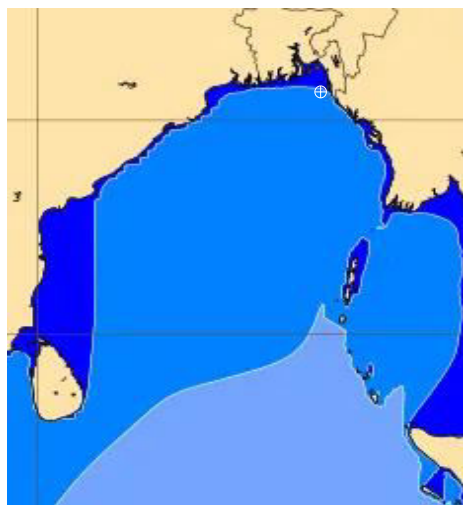
Date	Time	Max Wind Spd (kts)	Wind Direction	Wave Ht (m)	Sea State	Baro Pressure	Air Temp		Sea Surface Temp	Humidity (%)	Prob of Rain (%)	Sea State	Wave Ht (m)
							Max	Min					
15-05-24	0001	4	W	0.6	3	1009	34	24	29	83%	12% (0.0 mm)	0	0
	0600	4	NNW	0.6	3	1010			29	92%	14% (0.0 mm)	1	0 - 0.1
	1200	9	WNW	0.7	3	1011			30	71%	10% (0.0 mm)	2	0.1 - 0.5
	1800	14	W	0.7	3	1008			30	84%	15% (0.0 mm)	3	0.5 - 1.25
16-05-24	0001	5	WSW	0.6	3	1010	34	24	29	83%	14% (0.0 mm)	4	1.25 - 2.5
	0600	6	WNW	0.6	3	1010			29	92%	12% (0.0 mm)	5	2.5 - 4.0
	1200	11	WNW	0.7	3	1011			30	71%	15% (0.0 mm)	6	4.0 - 6.0
	1800	12	W	0.7	3	1007			30	83%	14% (0.0 mm)	7	6.0 - 9.0
17-05-24	0001	5	SW	0.7	3	1007	34	24	29	82%	12% (0.0 mm)	8	9.0 - 14.0
	0600	11	SW	0.7	3	1008			29	91%	13% (0.0 mm)	9	Over 14.0
	1200	8	W	0.8	3	1009			30	73%	12% (0.0 mm)		
	1800	16	W	0.8	3	1006			30	82%	14% (0.0 mm)		
18-05-24	0001	9	SW	0.8	3	1008	34	24	29	81%	15% (0.0 mm)		
	0600	10	SW	0.8	3	1007			29	93%	11% (0.0 mm)		
	1200	8	SSW	0.8	3	1009			30	75%	12% (0.0 mm)		
	1800	13	WSW	0.8	3	1006			30	83%	12% (0.0 mm)		

15 May 24 Wed (Probability 98%)

16 May 24 Thu (Probability 95%)

17 May 24 Fri (Probability 90%)

18 May 24 Sat (Probability 80%)



0 0.5 1 2 3 4 6 8 10 12 14 20



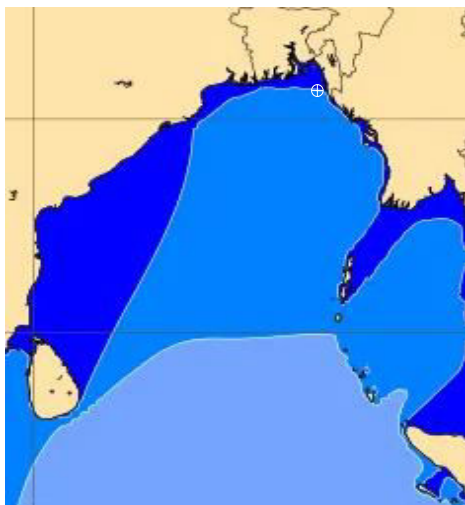
Significant wave height (m)

MARINE WEATHER FORECAST- 20 NM WEST OF ELEPHANT POINT (Lat 21° 10' N, Long 091° 42' E)

DATE : 15 to 22 May 2024

Date	Time	Max Wind Spd (kts)	Wind Direction	Wave Ht (m)	Sea State	Baro Pressure	Air Temp		Sea Surface Temp	Humidity (%)	Prob of Rain (%)	Sea State	Wave Ht (m)
							Max	Min					
19-05-24	0001	9	SW	0.9	3	1008	34	24	29	81%	13% (0.0 mm)	0	0
	0600	10	SW	0.9	3	1007			29	93%	14% (0.0 mm)	1	0 - 0.1
	1200	9	WSW	0.9	3	1007			30	75%	12% (0.0 mm)	2	0.1 - 0.5
	1800	16	WSW	1.0	3	1004			30	84%	15% (0.0 mm)	3	0.5 - 1.25
20-05-24	0001	9	SSW	1.0	3	1005	34	24	29	82%	11% (0.0 mm)	4	1.25 - 2.5
	0600	15	SSW	1.0	3	1005			29	93%	12% (0.0 mm)	5	2.5 - 4.0
	1200	10	SSW	1.0	3	1006			30	75%	13% (0.0 mm)	6	4.0 - 6.0
	1800	13	SW	1.1	3	1002			30	84%	12% (0.0 mm)	7	6.0 - 9.0
21-05-24	0001	13	SSW	1.1	3	1004	34	24	29	81%	11% (0.0 mm)	8	9.0 - 14.0
	0600	14	S	1.1	3	1004			29	92%	15% (0.0 mm)	9	Over 14.0
	1200	13	S	1.1	3	1006			30	73%	14% (0.0 mm)		
	1800	14	SSW	1.1	3	1002			30	82%	11% (0.0 mm)		
22-05-24	0001	16	S	1.2	3	1004	34	24	29	84%	12% (0.0 mm)		
	0600	13	SSW	1.1	3	1006			29	91%	13% (0.0 mm)		
	1200	11	S	1.1	3	1007			30	72%	12% (0.0 mm)		
	1800	15	SSW	1.2	3	1002			30	83%	14% (0.0 mm)		

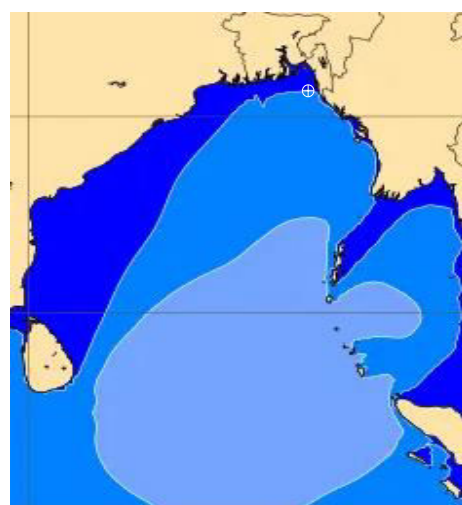
19 May 24 Sun (Probability 70%)



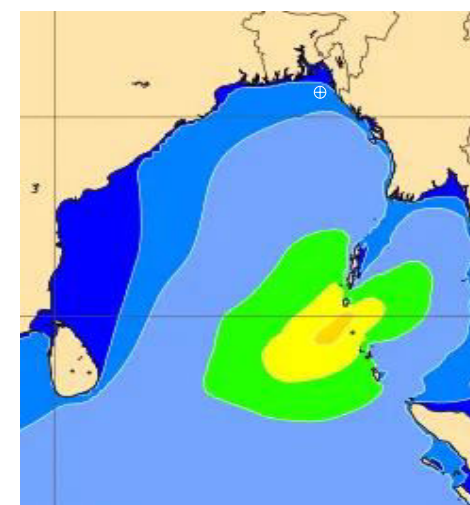
20 May 24 Mon (Probability 60%)



21 May 24 Tue (Probability 50%)



22 May 24 Wed (Probability 50%)



0 0.5 1 2 3 4 6 8 10 12 14 20



Significant wave height (m)

MARINE WEATHER FORECAST- 15 NM WEST OF ST. MARTIN'S LIGHT HOUSE (Lat 20° 37' N, Long 092° 03' E)

DATE : 15 to 22 May 2024

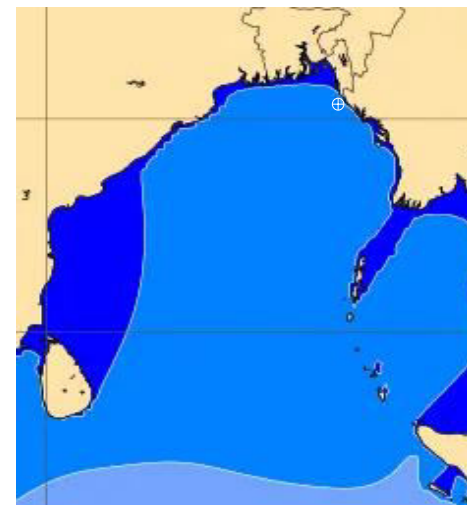
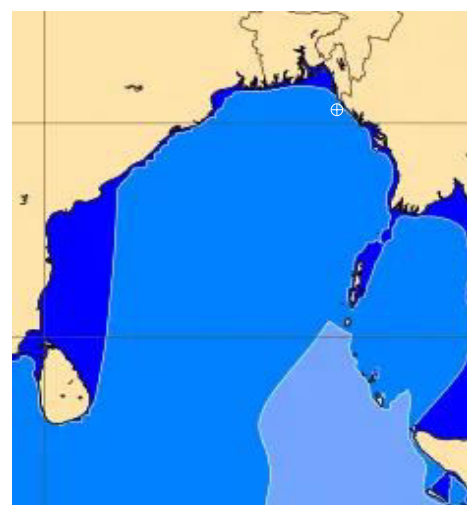
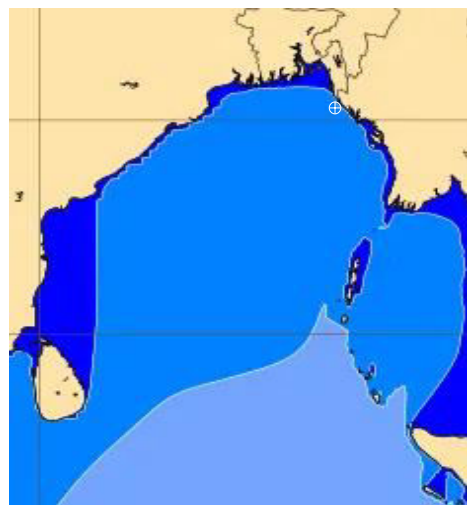
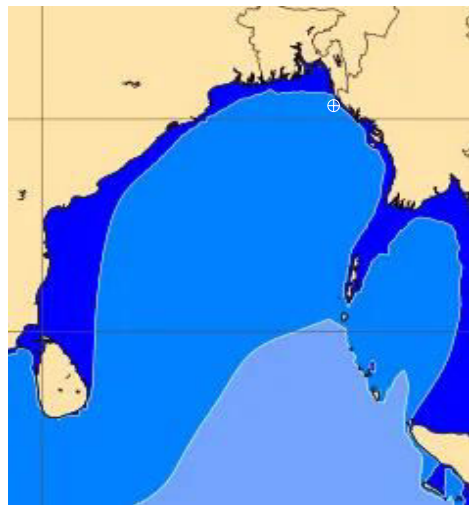
Date	Time	Max Wind Spd (kts)	Wind Direction	Wave Ht (m)	Sea State	Baro Pressure	Air Temp		Sea Surface Temp	Humidity (%)	Prob of Rain(%)	Sea State	Wave Ht (m)
							Max	Min					
15-05-24	0001	6	NW	0.8	3	1010	34	24	30	81%	13% (0.0 mm)	0	0
	0600	7	NW	0.7	3	1009			29	93%	14% (0.0 mm)	1	0 - 0.1
	1200	7	NW	0.7	3	1011			30	72%	11% (0.0 mm)	2	0.1 - 0.5
	1800	15	W	0.8	3	1008			30	85%	12% (0.0 mm)	3	0.5 - 1.25
16-05-24	0001	7	WNW	0.7	3	1010	34	24	30	84%	15% (0.0 mm)	4	1.25 - 2.5
	0600	8	WNW	0.7	3	1009			29	91%	13% (0.0 mm)	5	2.5 - 4.0
	1200	8	WNW	0.7	3	1011			30	72%	15% (0.0 mm)	6	4.0 - 6.0
	1800	16	WNW	0.9	3	1007			30	83%	14% (0.0 mm)	7	6.0 - 9.0
17-05-24	0001	8	W	0.7	3	1008	34	24	30	85%	16% (0.0 mm)	8	9.0 - 14.0
	0600	9	WSW	0.8	3	1008			29	92%	12% (0.0 mm)	9	Over 14.0
	1200	11	W	0.9	3	1010			30	74%	14% (0.0 mm)		
	1800	16	W	0.9	3	1006			30	83%	11% (0.0 mm)		
18-05-24	0001	11	W	0.9	3	1009	34	24	30	86%	13% (0.0 mm)		
	0600	9	SW	0.9	3	1008			29	92%	12% (0.0 mm)		
	1200	8	SW	0.9	3	1009			30	74%	15% (0.0 mm)		
	1800	13	WNW	0.9	3	1006			30	81%	11% (0.0 mm)		

15 May 24 Wed (Probability 98%)

16 May 24 Thu (Probability 95%)

17 May 24 Fri (Probability 90%)

18 May 24 Sat (Probability 80%)



Significant wave height (m)

MARINE WEATHER FORECAST- 15 NM WEST OF ST. MARTIN'S LIGHT HOUSE (Lat 20° 37' N, Long 092° 03' E)

DATE : 15 to 22 May 2024

Date	Time	Max Wind Spd (kts)	Wind Direction	Wave Ht (m)	Sea State	Baro Pressure	Air Temp		Sea Surface Temp	Humidity (%)	Prob of Rain (%)	Sea State	Wave Ht (m)
							Max	Min					
19-05-24	0001	9	WSW	1.0	3	1006	34	24	30	83%	11% (0.0 mm)	0	0
	0600	11	SW	1.1	3	1004			29	94%	14% (0.0 mm)	1	0 - 0.1
	1200	9	WSW	1.0	3	1007			30	72%	12% (0.0 mm)	2	0.1 - 0.5
	1800	11	WSW	1.2	3	1003			31	85%	13% (0.0 mm)	3	0.5 - 1.25
20-05-24	0001	14	WSW	1.3	4	1004	34	24	30	81%	16% (0.0 mm)	4	1.25 - 2.5
	0600	10	SW	1.3	4	1003			29	96%	12% (0.0 mm)	5	2.5 - 4.0
	1200	11	SSW	1.3	4	1006			30	72%	14% (0.0 mm)	6	4.0 - 6.0
	1800	13	WSW	1.4	4	1003			31	83%	10% (0.0 mm)	7	6.0 - 9.0
21-05-24	0001	13	S	1.4	4	1004	34	24	30	85%	12% (0.0 mm)	8	9.0 - 14.0
	0600	14	SSW	1.4	4	1004			29	94%	15% (0.0 mm)	9	Over 14.0
	1200	10	WSW	1.3	4	1007			30	71%	13% (0.0 mm)		
	1800	9	SW	1.3	4	1004			30	82%	15% (0.0 mm)		
22-05-24	0001	11	SW	1.3	4	1005	34	24	30	83%	14% (0.0 mm)		
	0600	8	SSW	1.3	4	1004			29	96%	11% (0.0 mm)		
	1200	7	SW	1.3	4	1005			30	72%	12% (0.0 mm)		
	1800	12	SSW	1.3	4	1003			31	85%	13% (0.0 mm)		

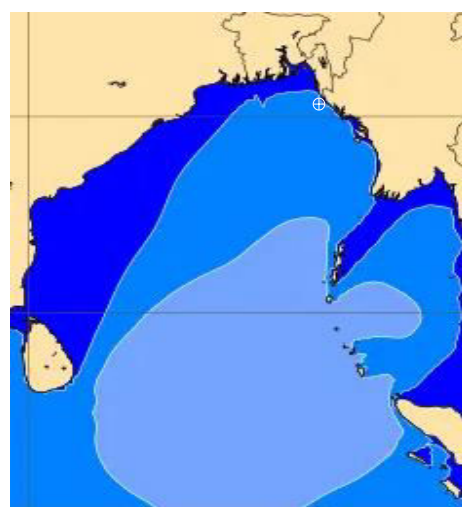
19 May 24 Sun (Probability 70%)



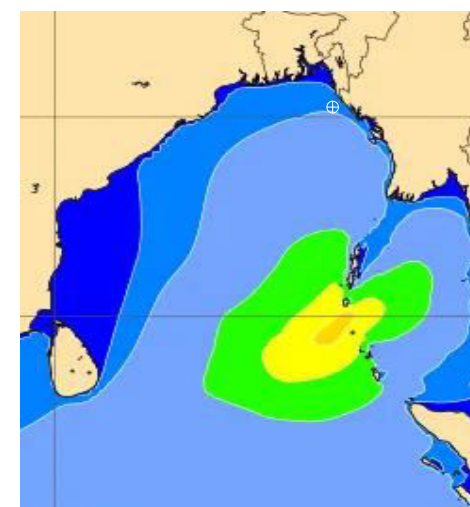
20 May 24 Mon (Probability 60%)



21 May 24 Tue (Probability 50%)



22 May 24 Wed (Probability 50%)



0 0.5 1 2 3 4 6 8 10 12 14 20



Significant wave height (m)

MARINE WEATHER FORECAST- 40 NM ESE OF PAYRA FAIRWAY (Lat 21° 07' N, Long 090° 45' E)

DATE : 15 to 22 May 2024

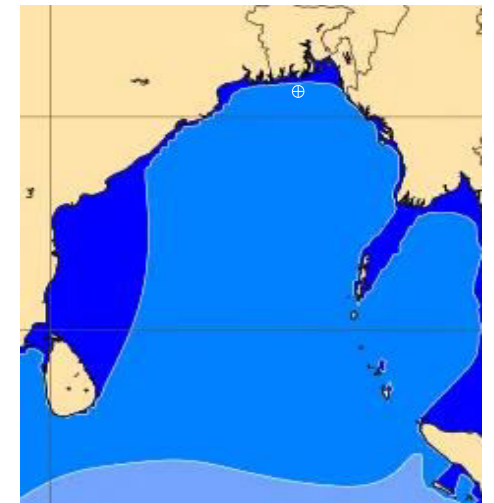
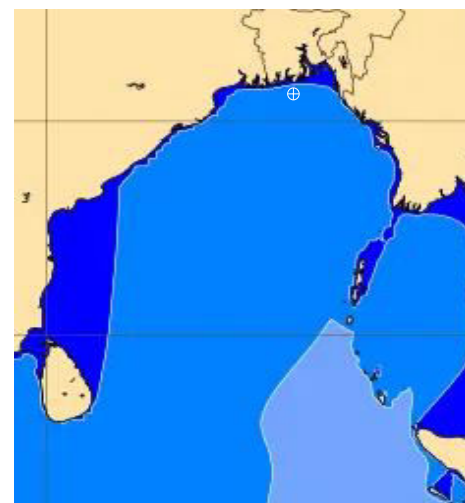
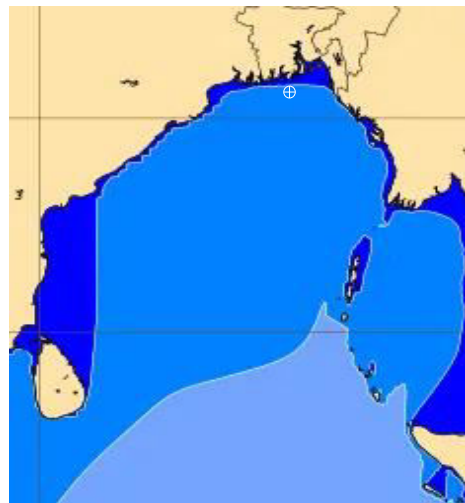
Date	Time	Max Wind Spd (kts)	Wind Direction	Wave Ht (m)	Sea State	Baro Pressure	Air Temp		Sea Surface Temp	Humidity (%)	Prob of Rain (%)	Sea State	Wave Ht (m)
							Max	Min					
15-05-24	0001	8	W	0.7	3	1009	34	24	30	84%	15% (0.0 mm)	0	0
	0600	6	W	0.7	3	1010			29	91%	11% (0.0 mm)	1	0 - 0.1
	1200	5	WNW	0.6	3	1011			30	72%	12% (0.0 mm)	2	0.1 - 0.5
	1800	10	WSW	0.7	3	1009			30	83%	13% (0.0 mm)	3	0.5 - 1.25
16-05-24	0001	13	WSW	0.7	3	1009	34	24	30	85%	15% (0.0 mm)	4	1.25 - 2.5
	0600	11	WSW	0.8	3	1010			29	91%	14% (0.0 mm)	5	2.5 - 4.0
	1200	10	W	0.8	3	1011			30	72%	11% (0.0 mm)	6	4.0 - 6.0
	1800	12	WSW	0.9	3	1007			30	85%	12% (0.0 mm)	7	6.0 - 9.0
17-05-24	0001	13	SW	0.9	3	1007	34	24	30	83%	13% (0.0 mm)	8	9.0 - 14.0
	0600	14	SW	1.0	3	1008			29	92%	15% (0.0 mm)	9	Over 14.0
	1200	12	WSW	1.1	3	1019			30	74%	12% (0.0 mm)		
	1800	14	WSW	1.2	3	1006			30	81%	14% (0.0 mm)		
18-05-24	0001	17	SW	1.3	4	1007	34	24	30	82%	11% (0.0 mm)		
	0600	15	SW	1.3	4	1006			29	95%	12% (0.0 mm)		
	1200	12	SW	1.3	4	1006			30	73%	13% (0.0 mm)		
	1800	16	WSW	1.3	4	1005			30	82%	15% (0.0 mm)		

15 May 24 Wed (Probability 98%)

16 May 24 Thu (Probability 95%)

17 May 24 Fri (Probability 90%)

18 May 24 Sat (Probability 80%)



0 0.5 1 2 3 4 6 8 10 12 14 20

Significant wave height (m)

MARINE WEATHER FORECAST- 40 NM ESE OF PAYRA FAIRWAY (Lat 21° 07' N, Long 090° 45' E)

DATE : 15 to 22 May 2024

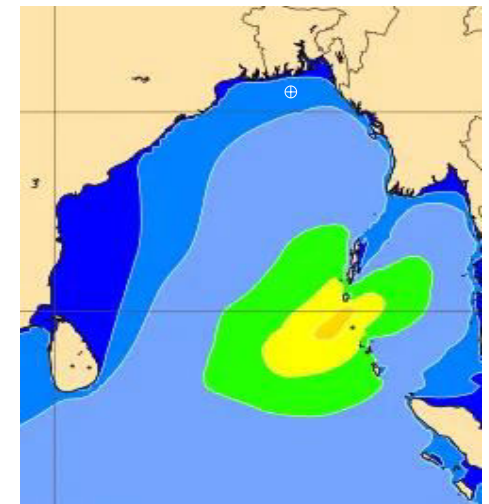
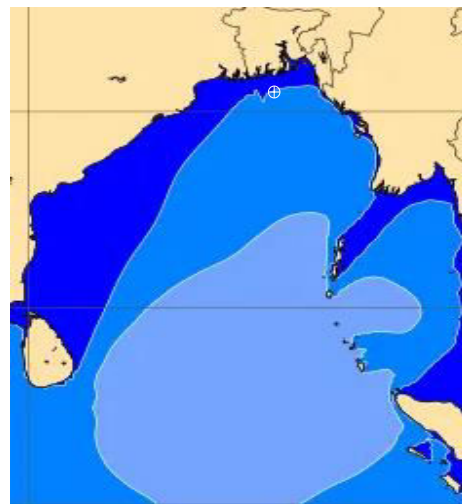
Date	Time	Max Wind Spd (kts)	Wind Direction	Wave Ht (m)	Sea State	Baro Pressure	Air Temp		Sea Surface Temp	Humidity (%)	Prob of Rain (%)	Sea State	Wave Ht (m)
							Max	Min					
19-05-24	0001	17	SW	1.4	4	1005	34	24	30	81%	12% (0.0 mm)	0	0
	0600	19	SSW	1.5	4	1004			29	92%	14% (0.0 mm)	1	0 - 0.1
	1200	15	SW	1.6	4	1005			30	74%	15% (0.0 mm)	2	0.1 - 0.5
	1800	18	SSW	1.6	4	1002			30	81%	13% (0.0 mm)	3	0.5 - 1.25
20-05-24	0001	21	SSW	1.6	4	1003	34	24	30	83%	15% (0.0 mm)	4	1.25 - 2.5
	0600	17	SSW	1.7	4	1004			29	90%	11% (0.0 mm)	5	2.5 - 4.0
	1200	17	SSW	1.7	4	1005			30	72%	12% (0.0 mm)	6	4.0 - 6.0
	1800	18	SSW	1.7	4	1002			30	81%	16% (0.0 mm)	7	6.0 - 9.0
21-05-24	0001	22	S	1.8	4	1003	34	24	30	82%	12% (0.0 mm)	8	9.0 - 14.0
	0600	17	SSW	1.7	4	1005			29	93%	14% (0.0 mm)	9	Over 14.0
	1200	13	SW	1.7	4	1005			30	75%	11% (0.0 mm)		
	1800	10	SSW	1.6	4	1002			30	84%	12% (0.0 mm)		
22-05-24	0001	10	SW	1.6	4	1005	34	24	30	82%	13% (0.0 mm)		
	0600	12	SSW	1.6	4	1005			29	95%	12% (0.0 mm)		
	1200	15	SSW	1.6	4	1006			30	71%	11% (0.0 mm)		
	1800	13	SSW	1.6	4	1002			30	83%	15% (0.0 mm)		

19 May 24 Sun (Probability 70%)

20 May 24 Mon (Probability 60%)

21 May 24 Tue (Probability 50%)

22 May 24 Wed (Probability 50%)



0 0.5 1 2 3 4 6 8 10 12 14 20



Significant wave height (m)

MARINE WEATHER FORECAST- 10 NM SOUTH OF MONGLA FAIRWAY (Lat 21° 16' N, Long 089° 34' E)

DATE : 15 to 22 May 2024

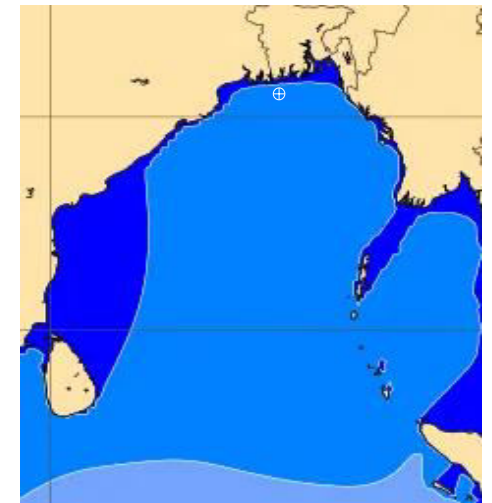
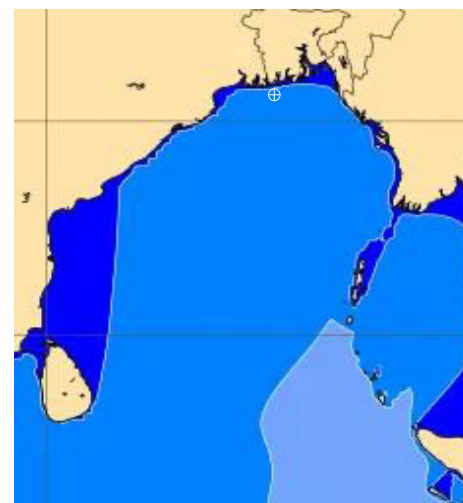
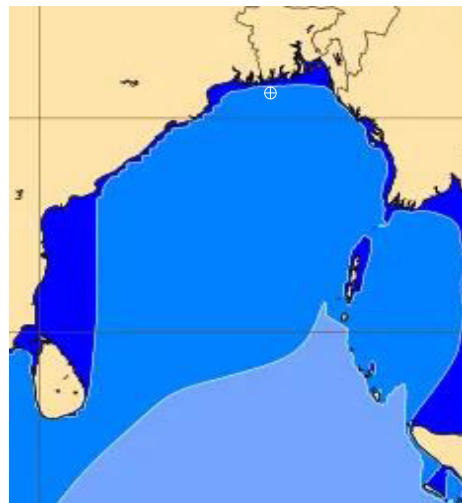
Date	Time	Max Wind Spd (kts)	Wind Direction	Wave Ht (m)	Sea State	Baro Pressure	Air Temp		Sea Surface Temp	Humidity (%)	Prob of Rain (%)	Sea State	Wave Ht (m)
							Max	Min					
15-05-24	0001	9	WSW	0.7	3	1009	34	24	29	81%	13% (0.0 mm)	0	0
	0600	6	WSW	0.7	3	1010			29	93%	14% (0.0 mm)	1	0 - 0.1
	1200	5	W	0.6	3	1011			30	72%	11% (0.0 mm)	2	0.1 - 0.5
	1800	10	SW	0.6	3	1008			30	85%	12% (0.0 mm)	3	0.5 - 1.25
16-05-24	0001	15	SW	0.8	3	1009	34	24	29	84%	13% (0.0 mm)	4	1.25 - 2.5
	0600	17	WSW	0.8	3	1009			29	91%	12% (0.0 mm)	5	2.5 - 4.0
	1200	15	WSW	0.9	3	1011			30	72%	15% (0.0 mm)	6	4.0 - 6.0
	1800	10	SSW	1.0	3	1007			30	83%	14% (0.0 mm)	7	6.0 - 9.0
17-05-24	0001	18	SSW	1.3	4	1006	34	24	29	82%	11% (0.0 mm)	8	9.0 - 14.0
	0600	18	SW	1.3	4	1007			29	91%	12% (0.0 mm)	9	Over 14.0
	1200	17	SW	1.3	4	1018			30	72%	13% (0.0 mm)		
	1800	19	SSW	1.4	4	1006			30	85%	12% (0.0 mm)		
18-05-24	0001	25	SW	1.5	4	1006	34	24	29	81%	15% (0.0 mm)		
	0600	21	SW	1.5	4	1006			29	93%	14% (0.0 mm)		
	1200	20	SSW	1.5	4	1007			30	75%	11% (0.0 mm)		
	1800	23	SSW	1.6	4	1005			30	82%	12% (0.0 mm)		

15 May 24 Wed (Probability 98%)

16 May 24 Thu (Probability 95%)

17 May 24 Fri (Probability 90%)

18 May 24 Sat (Probability 80%)



0 0.5 1 2 3 4 6 8 10 12 14 20

Significant wave height (m)

MARINE WEATHER FORECAST- 10 NM SOUTH OF MONGLA FAIRWAY (Lat 21° 16' N, Long 089° 34' E)

DATE : 15 to 22 May 2024

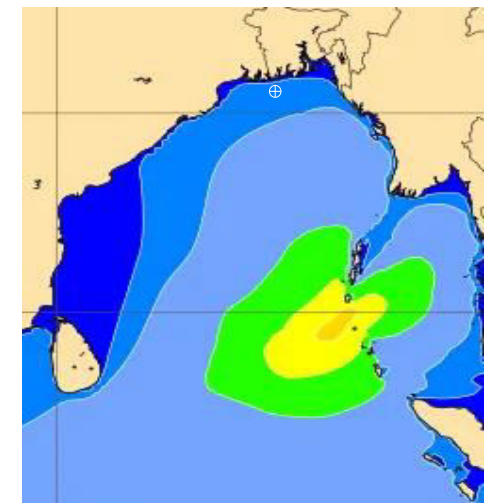
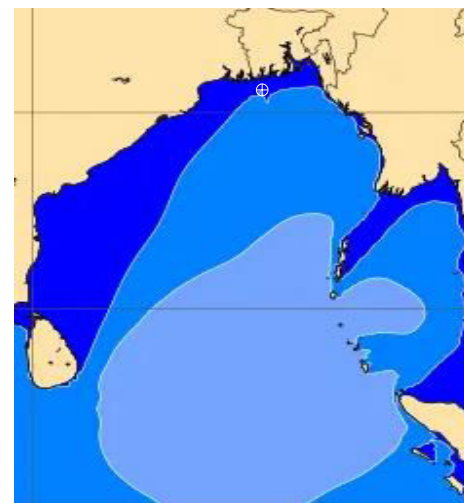
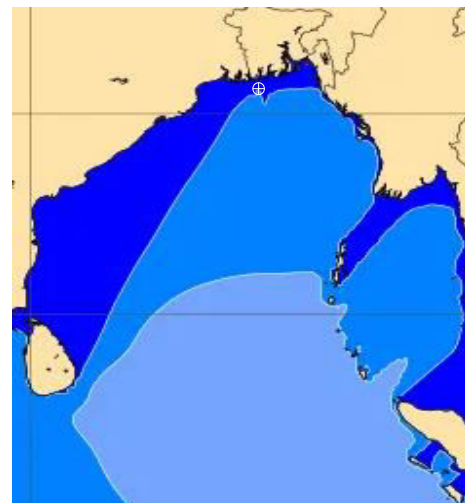
Date	Time	Max Wind Spd (kts)	W8nd Direction	Wave Ht (m)	Sea State	Baro Pressure	Air Temp		Sea Surface Temp	Humidity (%)	Prob of Rain (%)	Sea State	Wave Ht (m)
							Max	Min					
19-05-24	0001	19	SW	1.7	4	1003	34	24	29	81%	13% (0.0 mm)	0	0
	0600	20	SSW	1.8	4	1004			29	92%	12% (0.0 mm)	1	0 - 0.1
	1200	22	SSW	1.8	4	1005			30	73%	14% (0.0 mm)	2	0.1 - 0.5
	1800	21	SSW	1.8	4	1002			30	82%	11% (0.0 mm)	3	0.5 - 1.25
20-05-24	0001	24	SW	1.8	4	1004	34	24	29	85%	15% (0.0 mm)	4	1.25 - 2.5
	0600	17	SSW	1.8	4	1003			29	94%	12% (0.0 mm)	5	2.5 - 4.0
	1200	16	SW	1.7	4	1004			30	71%	11% (0.0 mm)	6	4.0 - 6.0
	1800	20	SSW	1.8	4	1002			30	82%	13% (0.0 mm)	7	6.0 - 9.0
21-05-24	0001	22	SW	1.8	4	1004	34	24	29	83%	12% (0.0 mm)	8	9.0 - 14.0
	0600	16	SSW	1.7	4	1003			29	91%	10% (0.0 mm)	9	Over 14.0
	1200	14	SW	1.7	4	1004			30	72%	11% (0.0 mm)		
	1800	17	SSW	1.7	4	1002			30	86%	12% (0.0 mm)		
22-05-24	0001	18	SSW	1.8	4	1004	34	24	29	82%	15% (0.0 mm)		
	0600	16	SSW	1.8	4	1003			29	91%	14% (0.0 mm)		
	1200	18	SW	1.8	4	1004			30	73%	11% (0.0 mm)		
	1800	15	SSW	1.7	4	1002			30	85%	13% (0.0 mm)		

19 May 24 Sun (Probability 70%)

20 May 24 Mon (Probability 60%)

21 May 24 Tue (Probability 50%)

22 May 24 Wed (Probability 50%)



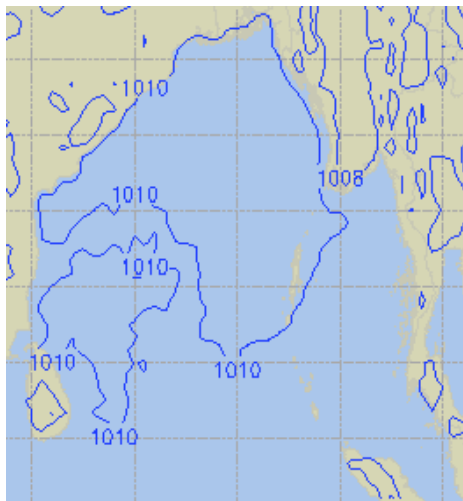
0 0.5 1 2 3 4 6 8 10 12 14 20



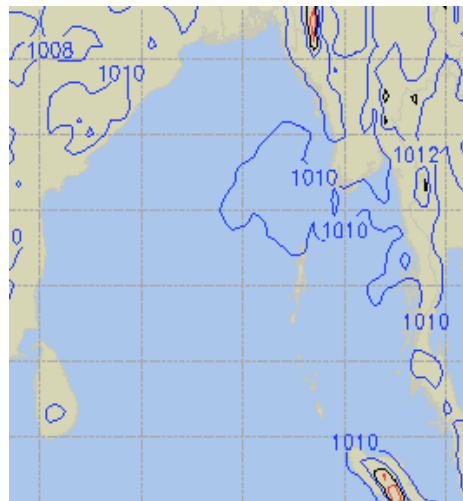
Significant wave height (m)

PREDICTED SURFACE PRESSURE FORECAST (15 to 21 May 2024)

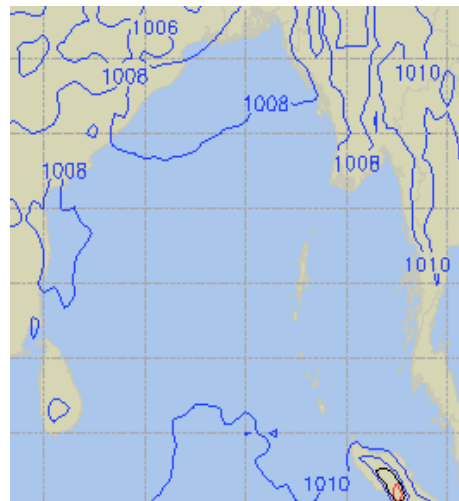
15 May 24 Wed (Probability 98%)



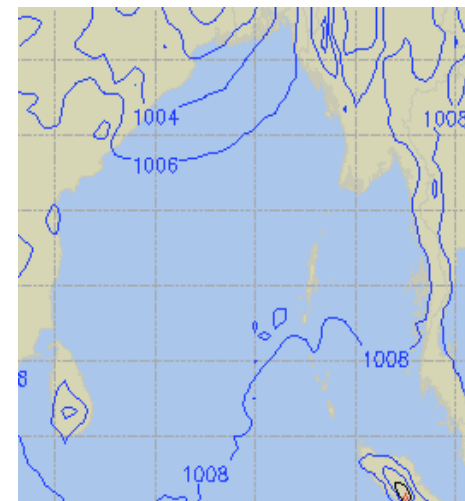
16 May 24 Thu (Probability 95%)



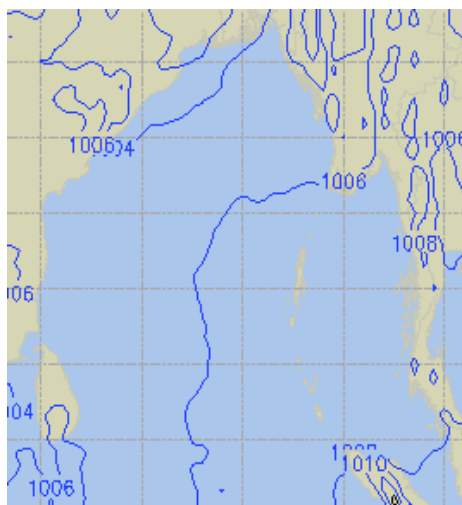
17 May 24 Fri (Probability 90%)



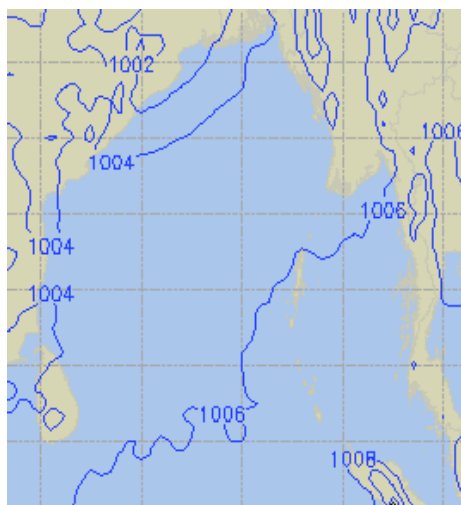
18 May 24 Sat (Probability 80%)



19 May 24 Sun (Probability 70%)



20 May 24 Mon (Probability 60%)



21 May 24 Tue (Probability 60%)

