



SUMMARY OF MARINE WEATHER FORECAST
COASTAL AREA OF BANGLADESH
DATE: 15 to 22 April 2026



Fleet Forecast	Trough of low lies over West Bengal and adjoining area. Seasonal low lies over South Bay.
Wind Direction, Speed	South-West/ Southerly 10-15 kts
Wave Height & Sea State	Ctg Outer Anchorage: 0.2 to 0.6 m (Sea state: 2 to 3) Abeam to Cox's Bazar: 0.4 to 1.2 m (Sea state: 2 to 4) St. Martin's Island: 0.8 to 1.2 m (Sea state 3) Payra Fairway Buoy: 0.9 to 1.4 m (Sea state: 3 to 4) Mongla Fairway Buoy: 1.0 to 1.4 m (Sea state: 3 to 4) Outer EEZ: 0.9 to 1.4 m (Sea state: 3 to 4)
Sea Surface Temperature	26° C - 30° C
Baro Pressure	1005-1011 mb
Rainfall	Partly cloudy to cloudy sky & temporary Rain/thunder Showers with gusty wind is likely to occur over Bay of Bengal and adjoining area.
Fog & Visibility	Hazy condition over the Bay of Bengal & coastal area, Visibility 1.5 – 5.0 km

Marine Weather Outlook (15 to 22 April 2026):

- Partly cloudy to cloudy sky & light rain/ thunder shower with gusty wind and lightning flashes is likely to occur over Bay of Bengal and adjoining area.
- Hazy condition over the Bay of Bengal & coastal area.
- Day and night temperature may rise.

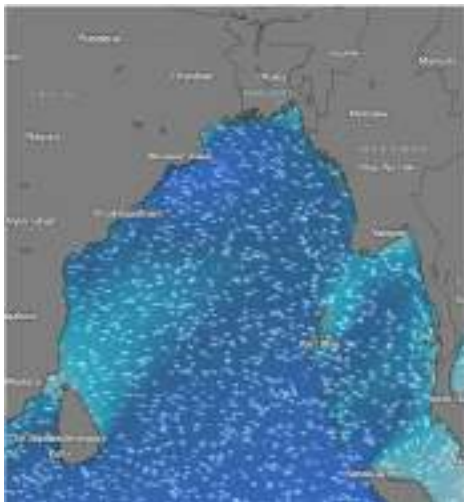


MARINE WEATHER FORECAST (15 to 22 April 2026) PATENGA POINT (22° 12' N, 091° 38' E)

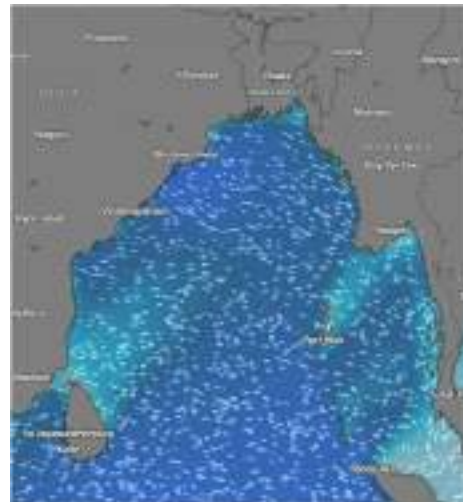


Date	Time	Air Temp (°C)		Sea Surface Temp (°C)	Baro Pressure (mbar)	Wind Direction	Wind Spd (kts)		Wave Ht (m)	Sea State	Humidity (%)	Prob of Rain (%)	Amount of Rain (mm)
		Max	Min				Gusting	Avg					
15-04-26 (Wednesday)	0001	31	26	26	1008	SW	11	07	0.4	2	87	09	0.0
	0600			27	1009	SE	13	09	0.4	2	88	12	0.0
	1200			30	1008	S	16	11	0.4	2	78	10	0.0
	1800			27	1007	SW	18	12	0.4	2	82	14	0.0
16-04-26 (Thursday)	0001	32	26	26	1008	SW	07	03	0.3	2	88	11	0.0
	0600			27	1009	SE	09	05	0.2	2	91	10	0.0
	1200			29	1008	SSW	14	08	0.3	2	78	12	0.0
	1800			28	1007	SW	13	08	0.2	2	85	15	0.0
17-04-26 (Friday)	0001	32	25	26	1008	SSW	07	04	0.2	2	87	11	0.0
	0600			27	1009	S	05	03	0.2	2	90	10	0.0
	1200			28	1008	SSW	12	08	0.3	2	75	12	0.0
	1800			28	1007	SW	13	09	0.3	2	86	15	0.0
18-04-26 (Saturday)	0001	32	25	26	1008	SW	09	05	0.2	2	88	10	0.0
	0600			27	1009	S	07	04	0.2	2	90	14	0.0
	1200			29	1008	SSW	12	08	0.3	2	74	09	0.0
	1800			28	1007	SW	11	07	0.3	2	87	13	0.0

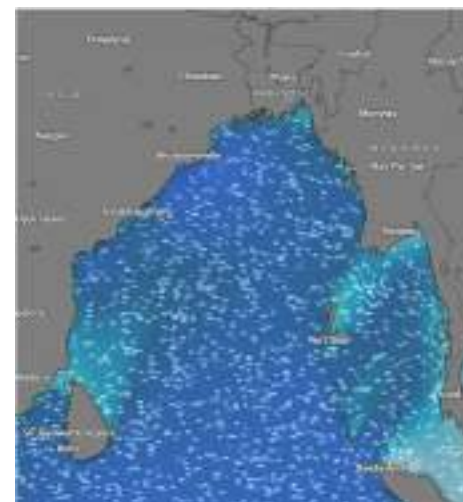
15 Apr 2026



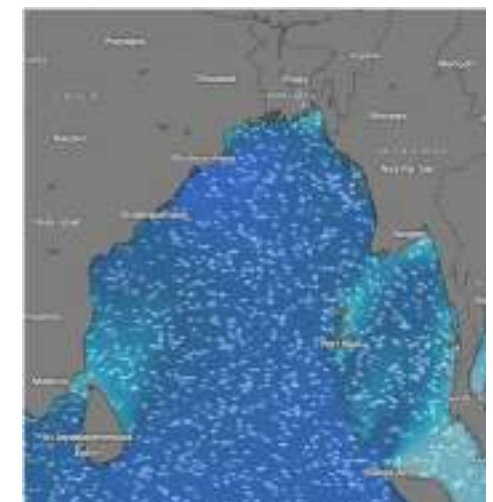
16 Apr 2026



17 Apr 2026



18 Apr 2026



Significant wave height (m)



MARINE WEATHER FORECAST (15 to 22 April 2026)

PATENGA POINT (22° 12' N, 091° 38' E)

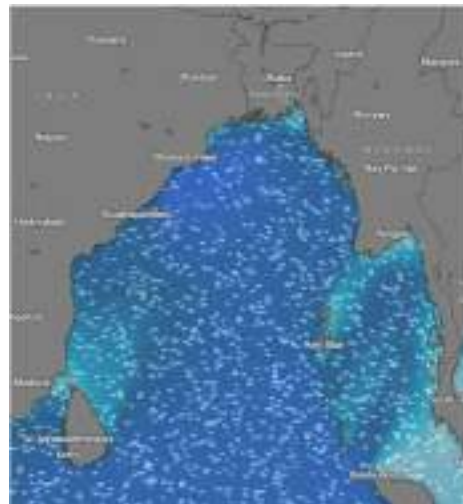


Date	Time	Air Temp (°C)		Sea Surface Temp (°C)	Baro Pressure (mbar)	Wind Direction	Wind Spd (kts)		Wave Ht (m)	Sea State	Humidity (%)	Prob of Rain (%)	Amount of Rain (mm)
		Max	Min				Gusting	Avg					
19-04-26 (Sunday)	0001	32	26	26	1008	SW	10	06	0.2	2	92	10	0.0
	0600			27	1009	S	08	04	0.2	2	93	13	0.0
	1200			29	1008	SW	11	08	0.3	2	76	08	0.0
	1800			27	1007	SW	11	07	0.3	2	83	10	0.0
20-04-26 (Monday)	0001	31	26	26	1008	SW	12	07	0.4	2	92	10	0.0
	0600			27	1009	S	13	08	0.6	3	93	13	0.0
	1200			29	1008	SW	20	14	0.6	3	76	08	0.0
	1800			27	1007	SW	21	12	0.6	3	83	10	0.0
21-04-26 (Tuesday)	0001	31	26	26	1008	SW	12	07	0.4	2	92	10	0.0
	0600			27	1009	S	13	08	0.6	3	93	13	0.0
	1200			29	1008	SW	20	14	0.6	3	76	08	0.0
	1800			27	1007	SW	21	12	0.6	3	83	10	0.0
22-04-26 (Wednesday)	0001	31	26	26	1008	S	18	11	0.4	2	87	08	0.0
	0600			27	1009	SSE	16	10	0.5	3	89	11	0.0
	1200			29	1008	SSW	18	12	0.5	3	72	06	0.0
	1800			27	1007	SW	20	12	0.4	3	81	09	0.0

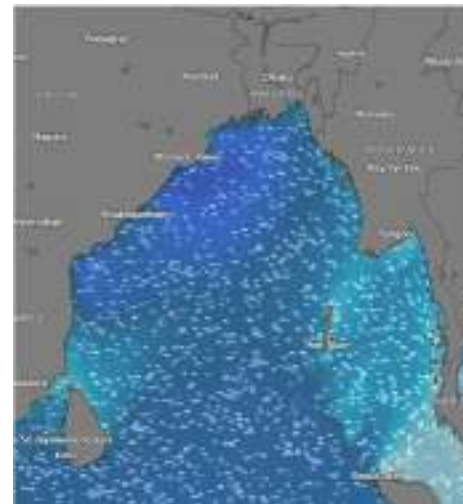
19 Apr 2026



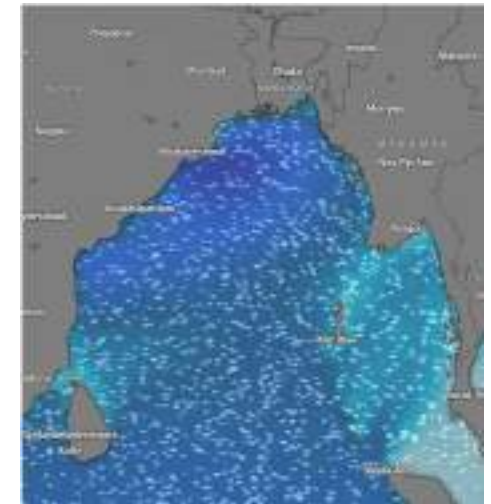
20 Apr 2026



21 Apr 2026



22 Apr 2026



Significant wave height (m)



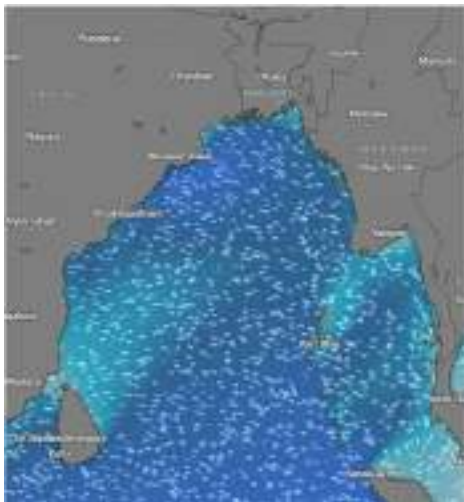
MARINE WEATHER FORECAST (15 to 22 April 2026)

ABEAM TO KUTUBDIA (21° 51' N, 091° 40' E)

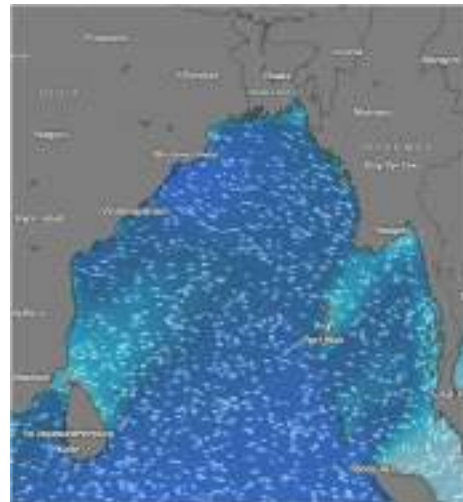


Date	Time	Air Temp (°C)		Sea Surface Temp (°C)	Baro Pressure (mbar)	Wind Direction	Wind Spd (kts)		Wave Ht (m)	Sea State	Humidity (%)	Prob of Rain (%)	Amount of Rain (mm)
		Max	Min				Gusting	Avg					
15-04-26 (Wednesday)	0001	30	26	26	1008	SW	12	08	0.4	2	89	12	0.0
	0600			27	1009	S	09	05	0.4	2	91	18	0.0
	1200			29	1008	SW	12	08	0.4	2	76	12	0.0
	1800			28	1007	SW	14	10	0.5	3	87	17	0.0
16-04-26 (Thursday)	0001	30	26	26	1008	SW	13	07	0.4	2	85	11	0.0
	0600			27	1009	S	09	04	0.4	2	90	17	0.0
	1200			29	1008	SW	11	07	0.3	2	78	10	0.0
	1800			28	1007	SW	17	11	0.5	3	84	12	0.0
17-04-26 (Friday)	0001	31	26	27	1008	SW	07	04	0.4	2	87	11	0.0
	0600			26	1009	SSW	05	03	0.4	2	91	17	0.0
	1200			29	1008	SW	11	07	0.4	2	75	10	0.0
	1800			28	1007	SSW	14	10	0.4	2	86	12	0.0
18-04-26 (Saturday)	0001	31	25	27	1008	W	11	07	0.4	2	88	09	0.0
	0600			26	1009	SSW	12	08	0.4	2	90	12	0.0
	1200			29	1008	SW	11	07	0.4	2	74	07	0.0
	1800			28	1007	SW	13	09	0.4	2	87	15	0.0

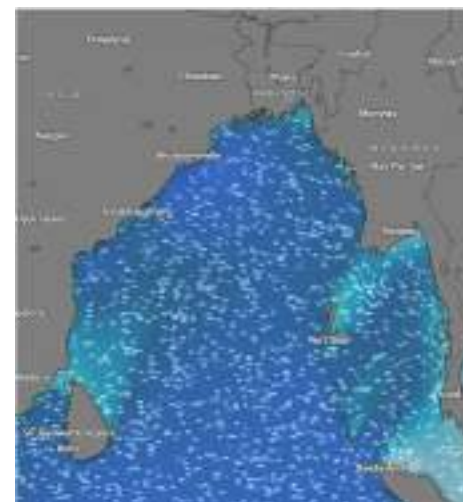
15 Apr 2026



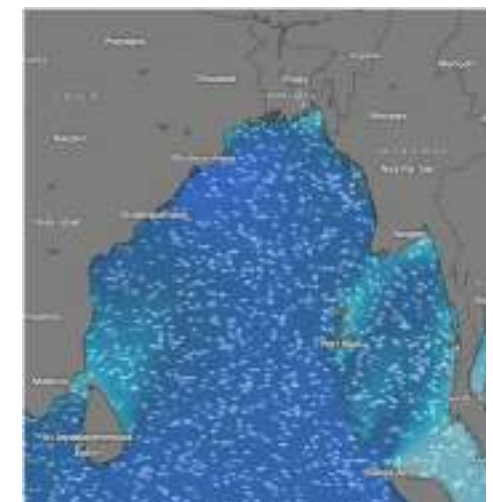
16 Apr 2026



17 Apr 2026



18 Apr 2026



Significant wave height (m)



MARINE WEATHER FORECAST (15 to 22 April 2026)

ABEAM TO KUTUBDIA (21° 51' N, 091° 40' E)

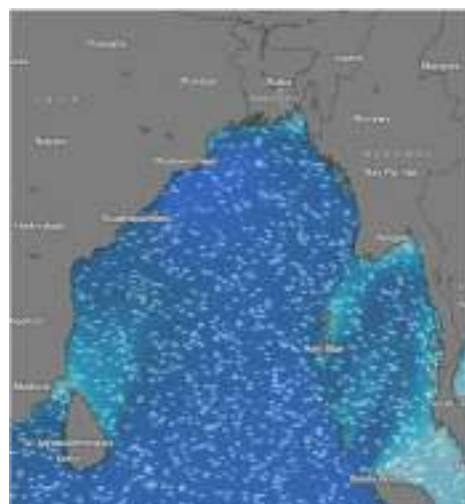


Date	Time	Air Temp (°C)		Sea Surface Temp (°C)	Baro Pressure (mbar)	Wind Direction	Wind Spd (kts)		Wave Ht (m)	Sea State	Humidity (%)	Prob of Rain (%)	Amount of Rain (mm)
		Max	Min				Gusting	Avg					
19-04-26 (Sunday)	0001	31	26	27	1009	W	12	05	0.4	2	88	09	0.0
	0600			26	1010	SSW	11	07	0.4	2	90	12	0.0
	1200			29	1008	S	14	10	0.5	3	74	07	0.0
	1800			28	1007	SW	14	10	0.5	3	86	14	0.0
20-04-26 (Monday)	0001	32	26	27	1009	W	15	09	0.5	3	90	10	0.0
	0600			26	1010	SW	16	11	0.6	3	91	11	0.0
	1200			29	1008	S	19	15	0.7	3	76	13	0.0
	1800			28	1007	W	18	14	0.7	3	82	11	0.0
21-04-26 (Tuesday)	0001	32	26	27	1009	W	15	09	0.5	3	90	10	0.0
	0600			26	1010	SW	16	11	0.6	3	91	11	0.0
	1200			29	1008	S	19	15	0.7	3	76	13	0.0
	1800			28	1007	W	18	14	0.7	3	82	11	0.0
22-04-26 (Wednesday)	0001	32	26	27	1009	W	14	08	1.2	3	91	08	0.0
	0600			26	1010	SW	11	06	1.2	3	89	11	0.0
	1200			29	1008	S	10	07	1.2	3	72	12	0.0
	1800			28	1007	W	15	12	1.1	3	81	10	0.0

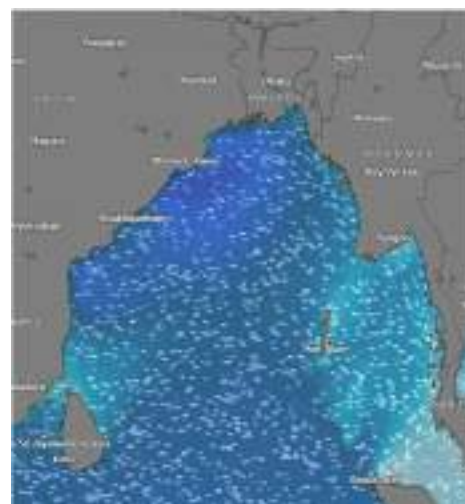
19 Apr 2026



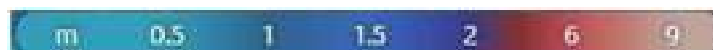
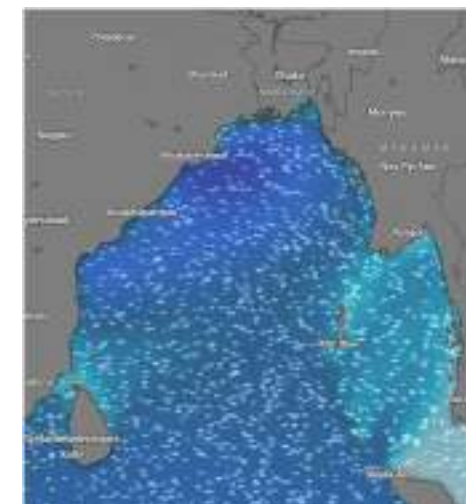
20 Apr 2026



21 Apr 2026



22 Apr 2026



Significant wave height (m)

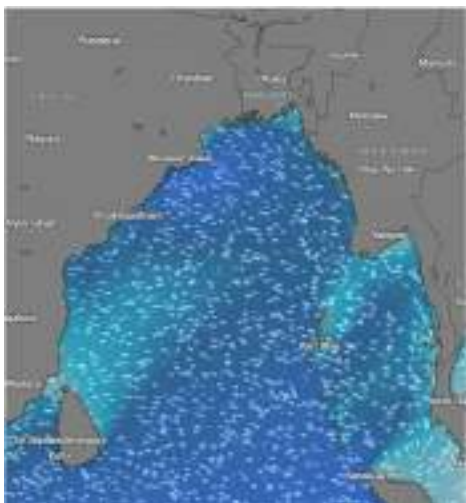


MARINE WEATHER FORECAST (15 to 22 April 2026) ABEAM TO ELEPHANT POINT (21° 11' N, 091° 52' E)

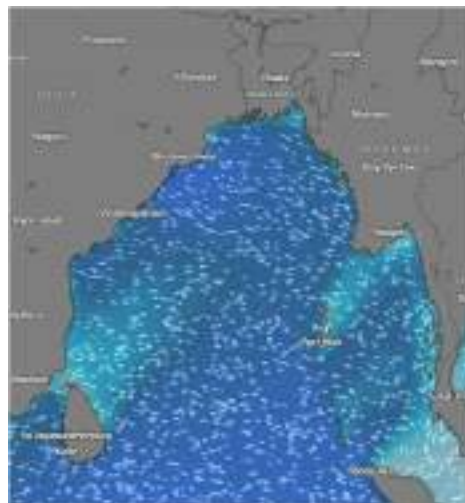


Date	Time	Air Temp (°C)		Sea Surface Temp (°C)	Baro Pressure (mbar)	Wind Direction	Wind Spd (kts)		Wave Ht (m)	Sea State	Humidity (%)	Prob of Rain (%)	Amount of Rain (mm)
		Max	Min				Gusting	Avg					
15-04-26 (Wednesday)	0001	31	26	26	1008	W	13	08	0.9	3	91	13	0.0
	0600			27	1009	SSW	09	05	0.8	3	92	18	0.0
	1200			29	1008	W	13	09	0.8	3	76	10	0.0
	1800			29	1007	W	13	09	0.9	3	87	16	0.0
16-04-26 (Thursday)	0001	32	25	27	1008	W	13	06	0.8	3	89	15	0.0
	0600			28	1009	SSW	09	04	0.8	3	90	14	0.0
	1200			29	1008	W	12	08	0.9	3	75	09	0.0
	1800			29	1009	SW	16	11	0.9	3	87	10	0.0
17-04-26 (Friday)	0001	32	25	27	1008	NW	07	04	0.9	3	88	15	0.0
	0600			28	1009	SSW	09	05	0.9	3	90	14	0.0
	1200			29	1008	SW	10	06	0.9	3	75	09	0.0
	1800			29	1009	SW	13	09	0.9	3	87	10	0.0
18-04-26 (Saturday)	0001	32	26	27	1008	W	11	07	1.0	3	89	09	0.0
	0600			28	1009	SW	10	06	0.9	3	91	15	0.0
	1200			29	1008	SW	11	07	0.9	3	74	10	0.0
	1800			29	1009	SW	13	09	0.9	3	86	16	0.0

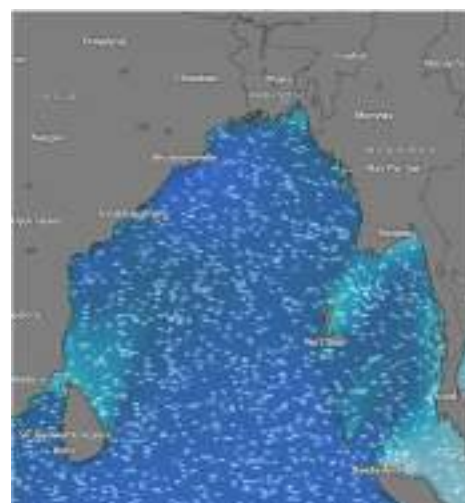
15 Apr 2026



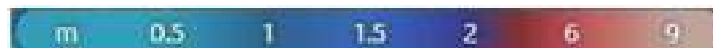
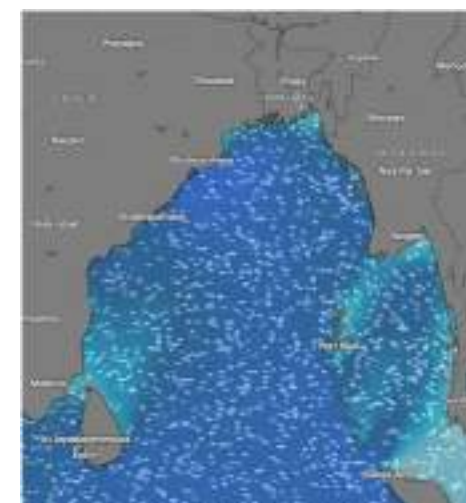
16 Apr 2026



17 Apr 2026



18 Apr 2026



Significant wave height (m)



MARINE WEATHER FORECAST (15 to 22 April 2026)

ABEAM TO ELEPHANT POINT (21° 11' N, 091° 52' E)



Date	Time	Air Temp (°C)		Sea Surface Temp (°C)	Baro Pressure (mbar)	Win Direction	Wind Spd (kts)		Wave Ht (m)	Sea State	Humidity (%)	Prob of Rain (%)	Amount of Rain (mm)
		Max	Min				Gusting	Avg					
19-04-26 (Sunday)	0001	32	26	27	1008	ESE	13	04	0.9	3	92	05	0.0
	0600			28	1009	SE	9	06	0.8	3	91	06	0.0
	1200			29	1008	WSW	12	09	0.8	3	73	07	0.0
	1800			29	100729	WSW	12	09	0.9	3	82	08	0.0
20-04-26 (Monday)	0001	32	26	27	1008	ESE	13	05	0.9	3	91	10	0.0
	0600			28	1009	SE	13	10	1.0	3	92	11	0.0
	1200			29	1008	WSW	15	12	1.1	3	76	12	0.0
	1800			29	100729	WSW	17	12	1.2	3	83	10	0.0
21-04-26 (Tuesday)	0001	32	26	27	1008	ESE	13	05	0.9	3	91	10	0.0
	0600			28	1009	SE	13	10	1.0	3	92	11	0.0
	1200			29	1008	WSW	15	12	1.1	3	76	12	0.0
	1800			29	100729	WSW	17	12	1.2	3	83	10	0.0
22-04-26 (Wednesday)	0001	32	26	27	1008	ESE	16	10	1.2	3	90	06	0.0
	0600			28	1009	SE	13	09	1.1	3	91	07	0.0
	1200			29	1008	WSW	13	10	1.1	3	73	12	0.0
	1800			29	100729	WSW	15	12	1.1	3	81	10	0.0

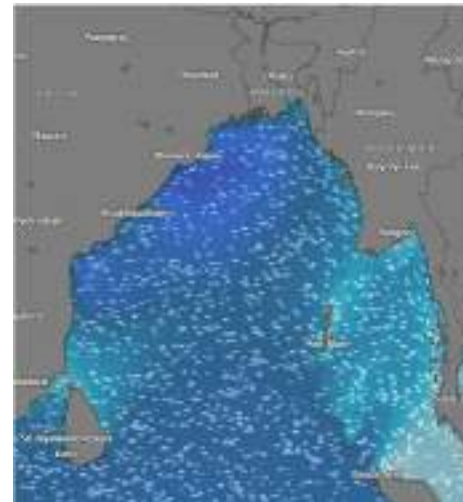
19 Apr 2026



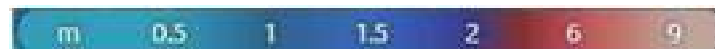
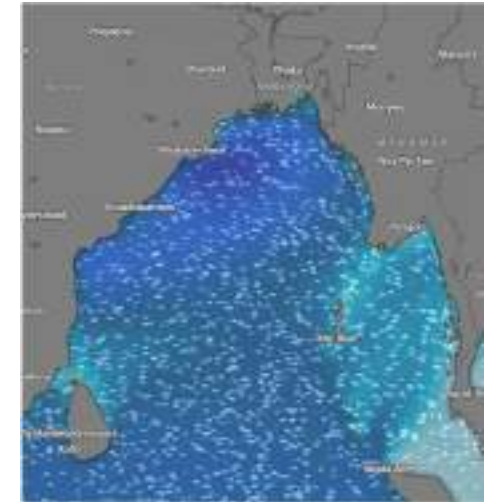
20 Apr 2026



21 Apr 2026



22 Apr 2026



Significant wave height (m)



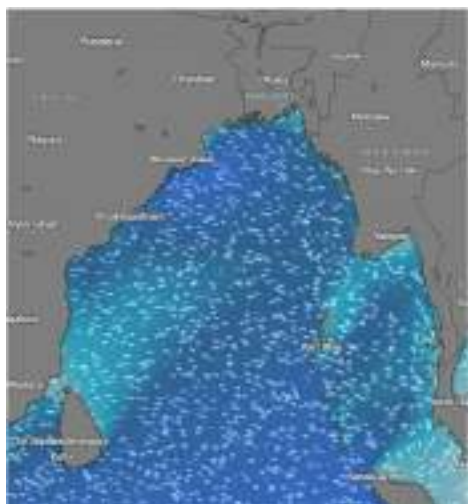
MARINE WEATHER FORECAST (15 to 22 April 2026)

ABEAM TO ST. MARTIN'S LIGHT HOUSE (20° 37' N, 092° 08' E)

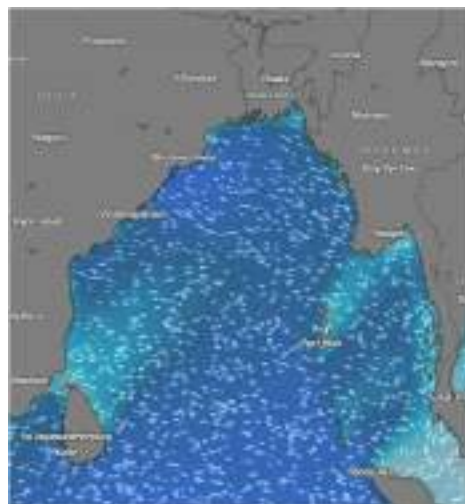


Date	Time	AirTemp (°C)		Sea Surface Temp (°C)	Baro Pressure (mbar)	Wind Direction	Wind Spd (kts)		Wave Ht (m)	Sea State	Humidity (%)	Prob of Rain (%)	Amount of Rain (mm)
		Max	Min				Gusting	Avg					
15-04-26 (Wednesday)	0001	31	26	26	1008	SW	10	06	1.1	3	89	13	0.0
	0600			27	1009	SSE	12	04	1.0	3	90	18	0.0
	1200			30	1008	W	15	10	1.1	3	76	10	0.0
	1800			29	1007	W	13	11	1.1	3	81	19	0.0
16-04-26 (Thursday)	0001	31	26	24	1008	SW	10	06	1.0	3	89	13	0.0
	0600			25	1009	SSE	09	05	1.1	3	90	18	0.0
	1200			30	1008	W	13	10	1.0	3	76	10	0.0
	1800			27	1007	W	11	07	1.0	3	85	19	0.0
17-04-26 (Friday)	0001	32	26	27	1008	NNW	11	07	0.9	3	88	10	0.0
	0600			26	1009	SW	10	06	1.0	3	91	15	0.0
	1200			29	1008	W	12	08	1.0	3	74	09	0.0
	1800			28	1007	W	15	11	1.0	3	83	17	0.0
18-04-26 (Saturday)	0001	31	26	27	1008	W	10	06	1.0	3	89	10	0.0
	0600			26	1009	SW	09	05	0.9	3	91	15	0.0
	1200			28	1008	W	11	07	0.9	3	75	09	0.0
	1800			28	1007	W	13	09	0.9	3	86	17	0.0

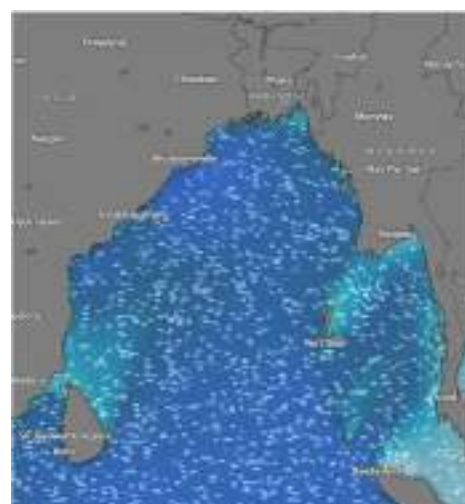
15 Apr 2026



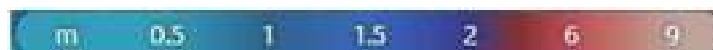
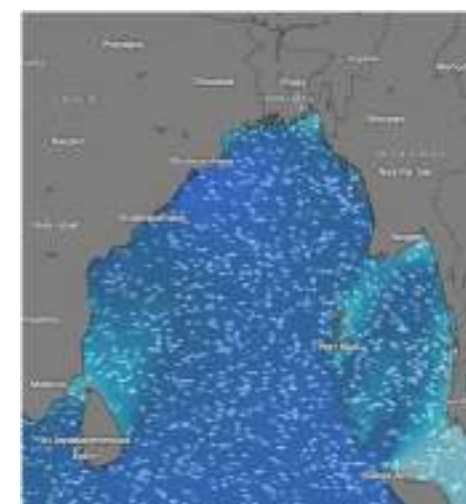
16 Apr 2026



17 Apr 2026



18 Apr 2026



Significant wave height (m)



MARINE WEATHER FORECAST (15 to 22 April 2026)

ABEAM TO ST. MARTIN'S LIGHT HOUSE (20° 37' N, 092° 08' E)

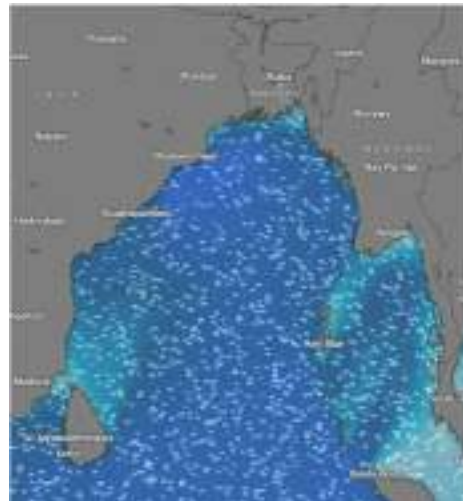


Date	Time	Air Temp (°C)		Sea Surface Temp (°C)	Baro Pressure (mbar)	Wind Direction	Wind Spd (kts)		Wave Ht (m)	Sea State	Humidity (%)	Prob of Rain (%)	Amount of Rain (mm)
		Max	Min				Gusting	Avg					
19-04-26 (Sunday)	0001	31	26	26	1009	WSW	10	06	0.9	3	91	10	0.0
	0600			27	1010	SW	8	05	0.9	3	89	12	0.0
	1200			30	1009	WSW	11	09	0.9	3	76	13	0.0
	1800			29	1008	W	14	10	0.9	3	82	14	0.0
20-04-26 (Monday)	0001	31	26	24	1009	NNE	09	05	0.9	3	91	10	0.0
	0600			25	1010	ENE	10	07	0.9	3	89	12	0.0
	1200			30	1009	WSW	13	09	1.0	3	76	13	0.0
	1800			27	1008	W	15	11	1.1	3	82	14	0.0
21-04-26 (Tuesday)	0001	31	26	24	1009	NNE	09	05	0.9	3	91	10	0.0
	0600			25	1010	ENE	10	07	0.9	3	89	12	0.0
	1200			30	1009	WSW	13	09	1.0	3	76	13	0.0
	1800			27	1008	W	15	11	1.1	3	82	14	0.0
22-04-26 (Wednesday)	0001	31	26	24	1009	NNE	13	10	1.2	3	91	06	0.0
	0600			25	1010	ENE	15	12	1.2	3	89	07	0.0
	1200			30	1009	WSW	12	08	1.2	3	76	08	0.0
	1800			27	1008	W	13	09	1.1	3	81	09	0.0

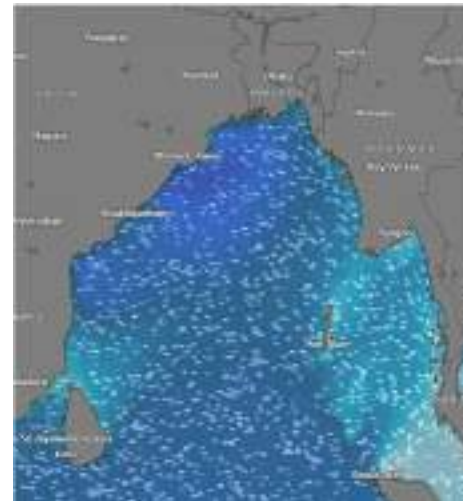
19 Apr 2026



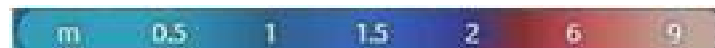
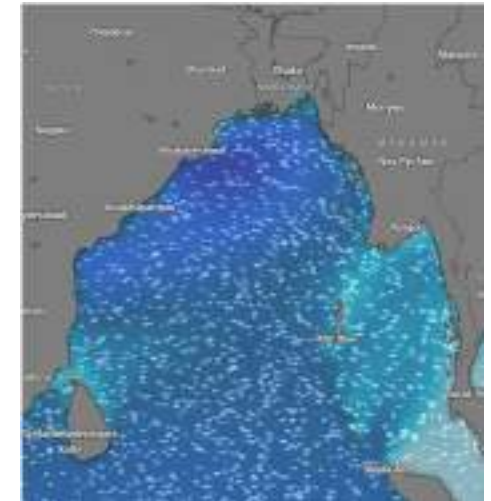
20 Apr 2026



21 Apr 2026



22 Apr 2026



Significant wave height (m)



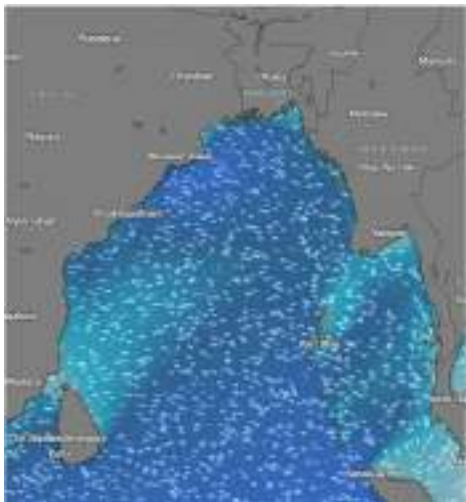
MARINE WEATHER FORECAST (15 to 22 April 2026)



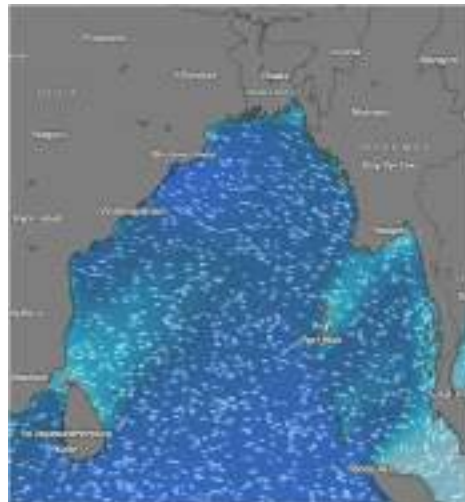
PAYRA FAIRWAY (21° 22' N, 090° 6' E)

Date	Time	Air Temp (°C)		Sea Surface Temp (°C)	Baro Pressure (mbar)	Wind Direction	Wind Spd (kts)		Wave Ht (m)	Sea State	Humidity (%)	Prob of Rain (%)	Amount of Rain (mm)
		Max	Min				Gusting	Avg					
15-04-26 (Wednesday)	0001	31	23	27	1009	SSW	18	12	1.3	4	91	08	0.0
	0600			26	1010	SSW	18	14	1.3	4	90	07	0.0
	1200			28	1008	SW	16	13	1.2	3	76	10	0.0
	1800			28	1006	WSW	18	14	1.3	4	81	12	0.0
16-04-26 (Thursday)	0001	31	23	27	1009	SW	18	11	1.2	3	90	13	0.0
	0600			26	1010	SW	19	11	1.2	3	79	10	0.0
	1200			29	1008	SSW	17	13	1.2	3	72	11	0.0
	1800			28	1007	SSW	18	13	1.1	3	81	12	0.0
17-04-26 (Friday)	0001	31	27	27	1007	SW	14	10	0.9	3	90	10	0.0
	0600			26	1009	SW	15	11	1.1	3	87	09	0.0
	1200			29	1008	SSW	16	14	1.1	3	74	08	0.0
	1800			28	1006	SW	19	15	1.1	3	84	06	0.0
18-04-26 (Saturday)	0001	31	27	27	1010	SSW	18	12	1.2	3	90	07	0.0
	0600			26	1011	SW	16	11	1.2	3	88	08	0.0
	1200			28	1009	SSW	15	10	1.2	3	79	10	0.0
	1800			28	1007	SSW	15	13	1.2	3	84	10	0.0

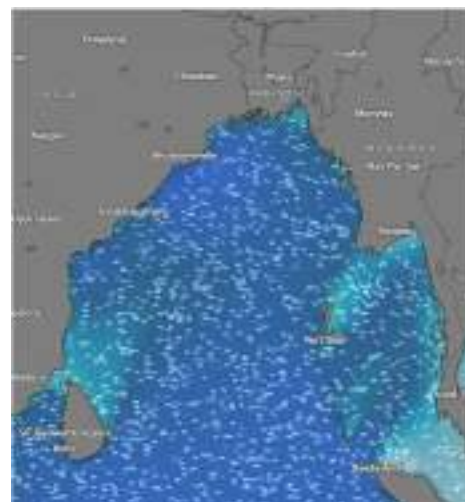
15 Apr 2026



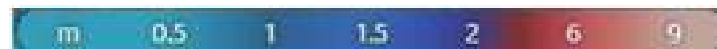
16 Apr 2026



17 Apr 2026



18 Apr 2026



Significant wave height (m)



MARINE WEATHER FORECAST (15 to 22 April 2026)



PAYRA FAIRWAY (21° 22' N, 090° 6' E)

Date	Time	Air Temp (°C)		Sea Surface Temp (°C)	Baro Pressure (mbar)	Wind Direction	Wind Spd (kts)		Wae Ht (m)	Sea State	Humidity (%)	Prob of Rain (%)	Amount of Rain (mm)
		Max	Min				Gusting	Avg					
19-04-26 (Sunday)	0001	31	27	26	1007	SW	12	08	1.0	3	90	09	0.0
	0600			27	1008	SW	13	10	1.0	3	91	08	0.0
	1200			29	1008	WSW	14	11	1.1	3	76	10	0.0
	1800			29	1006	SSW	15	13	1.1	3	82	11	0.0
20-04-26 (Monday)	0001	31	27	26	1007	SW	17	09	1.2	3	90	09	0.0
	0600			27	1008	SW	18	12	1.3	4	91	08	0.0
	1200			29	1008	WSW	19	15	1.5	4	76	10	0.0
	1800			29	1006	SSW	21	16	1.6	4	82	11	0.0
21-04-26 (Tuesday)	0001	31	27	26	1007	SW	17	09	1.2	3	90	09	0.0
	0600			27	1008	SW	18	12	1.3	4	91	08	0.0
	1200			29	1008	WSW	19	15	1.5	4	76	10	0.0
	1800			29	1006	SSW	21	16	1.6	4	82	11	0.0
22-04-26 (Wednesday)	0001	31	27	27	1009	SSW	18	12	1.3	4	91	08	0.0
	0600			26	1010	SSW	18	14	1.3	4	90	07	0.0
	1200			28	1008	SW	16	13	1.2	3	76	10	0.0
	1800			28	1006	WSW	18	14	1.3	4	81	12	0.0

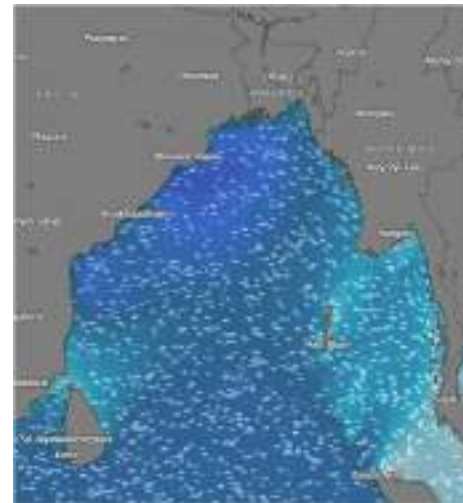
19 Apr 2026



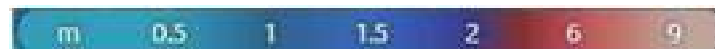
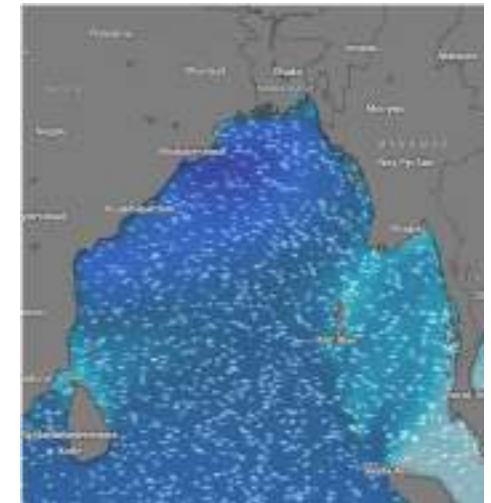
20 Apr 2026



21 Apr 2026



22 Apr 2026



Significant wave height (m)



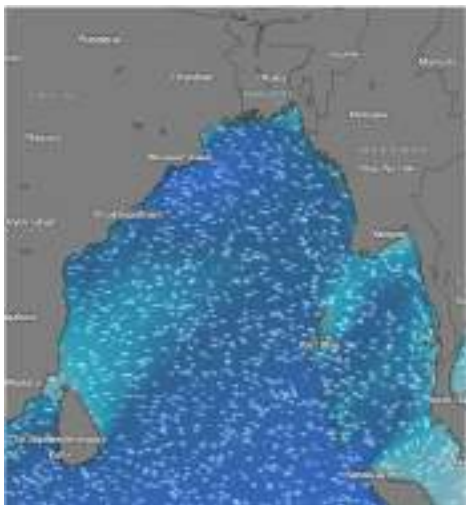
MARINE WEATHER FORECAST (15 to 22 April 2026)

MONGLA FAIRWAY (21° 26' N, 089° 34' E)



Date	Time	Air Temp (°C)		Sea Surface Temp (°C)	Baro Pressure (mbar)	Wind Direction	Wind Spd (kts)		Wave Ht (m)	Sea State	Humidity (%)	Prob of Rain (%)	Amount of Rain (mm)
		Max	Min				Gusting	Avg					
15-04-26 (Wednesday)	0001	31	27	28	1008	SSW	17	12	1.3	4	90	10	0.0
	0600			26	1009	SW	16	13	1.3	4	89	11	0.0
	1200			28	1007	SW	19	14	1.2	3	77	12	0.0
	1800			29	1006	SSW	19	14	1.3	4	62	10	0.0
16-04-26 (Thursday)	0001	31	27	27	1008	S	20	16	1.3	4	89	11	0.0
	0600			26	1009	S	19	13	1.2	3	88	13	0.0
	1200			29	1006	SSW	17	13	1.3	4	66	10	0.0
	1800			28	1005	S	19	15	1.3	4	77	10	0.0
17-04-26 (Friday)	0001	34	27	27	1009	SW	18	12	1.1	3	89	07	0.0
	0600			26	1010	SW	20	15	1.2	3	90	09	0.0
	1200			28	1008	SW	21	15	1.2	3	56	08	0.0
	1800			29	1006	SW	17	13	1.2	3	65	05	0.0
18-04-26 (Saturday)	0001	35	27	28	1007	SSW	20	15	1.3	4	90	06	0.0
	0600			27	1008	SSW	21	14	1.4	4	91	04	0.0
	1200			29	1007	SSW	15	10	1.4	4	64	05	0.0
	1800			28	1006	SW	16	12	1.3	4	72	06	0.0

15 Apr 2026



16 Apr 2026



17 Apr 2026



18 Apr 2026



Significant wave height (m)



MARINE WEATHER FORECAST (15 to 22 April 2026)

MONGLA FAIRWAY (21° 26' N, 089° 34' E)



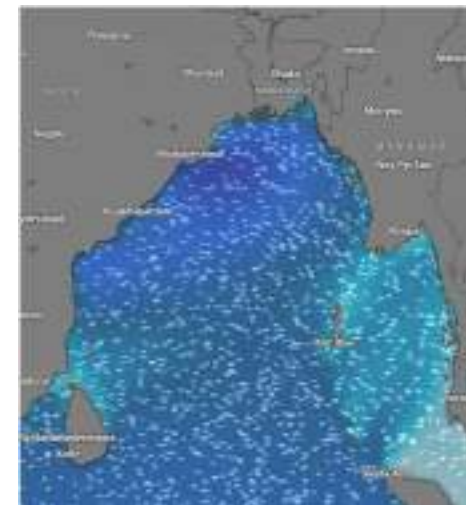
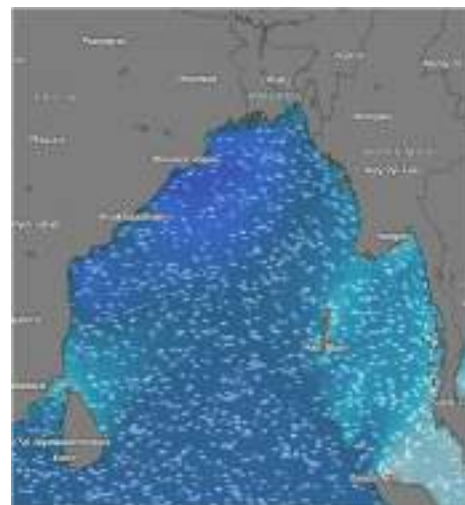
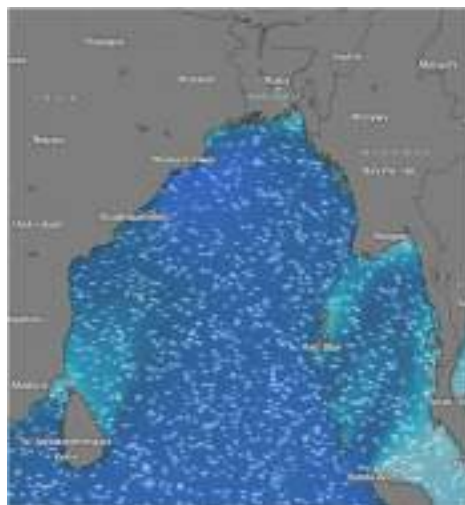
Date	Time	Air Temp (°C)		Sea Surface Temp (°C)	Baro Pressure (mbar)	Wind Direction	Wind Spd (kts)		Wave Ht (m)	Sea State	Humidity (%)	Prob of Rain (%)	Amount of Rain (mm)
		Max	Min				Gusting	Avg					
19-04-26 (Sunday)	0001	35	26	27	1008	SSW	14	10	1.1	3	91	08	0.0
	0600			28	1009	SW	16	11	1.2	3	91	07	0.0
	1200			29	1008	SSW	18	12	1.1	3	64	10	0.0
	1800			29	1007	SSW	18	13	1.2	3	70	10	0.0
20-04-26 (Monday)	0001	34	26	27	1008	SSW	17	13	1.2	3	91	08	0.0
	0600			28	1009	SW	21	14	1.3	4	91	07	0.0
	1200			29	1008	SSW	22	16	1.5	4	64	10	0.0
	1800			29	1007	SSW	23	17	1.7	4	70	10	0.0
21-04-26 (Tuesday)	0001	34	26	27	1008	SSW	17	13	1.2	3	91	08	0.0
	0600			28	1009	SW	21	14	1.3	4	91	07	0.0
	1200			29	1008	SSW	22	16	1.5	4	64	10	0.0
	1800			29	1007	SSW	23	17	1.7	4	70	10	0.0
22-04-26 (Wednesday)	0001	34	26	28	1008	SSW	17	12	1.3	4	90	10	0.0
	0600			26	1009	SW	16	13	1.3	4	89	11	0.0
	1200			28	1007	SW	19	14	1.2	3	77	12	0.0
	1800			29	1006	SSW	19	14	1.3	4	62	10	0.0

19 Apr 2026

20 Apr 2026

21 Apr 2026

22 Apr 2026



Significant wave height (m)

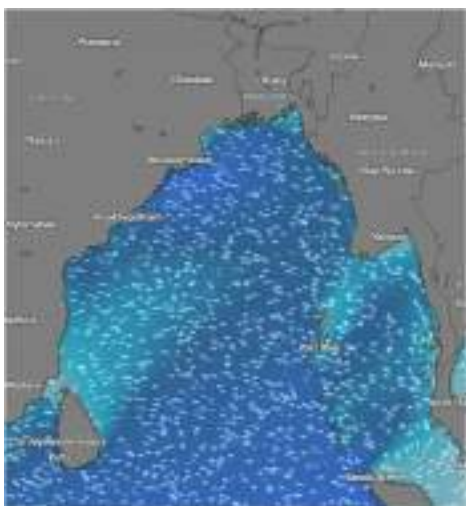


MARINE WEATHER FORECAST (15 to 22 April 2026) OUTER EEZ (18° 48' N, 090° 30' E)



Date	Time	Air Temp (°C)		Sea Surface Temp (°C)	Baro Pressure (mbar)	Wind Direction	Wind Spd (kts)		Wave Ht (m)	Sea State	Humidity (%)	Prob of Rain (%)	Amount of Rain (mm)
		Max	Min				Gusting	Avg					
15-04-26 (Wednesday)	0001	31	26	28	1008	W	16	12	1.3	4	90	10	0.0
	0600			27	1009	SW	18	14	1.3	4	91	17	0.0
	1200			29	1008	W	15	10	1.3	4	75	15	0.0
	1800			28	1007	W	14	11	1.3	4	85	19	0.0
16-04-26 (Thursday)	0001	31	26	28	1006	W	15	12	1.3	4	90	08	0.0
	0600			27	1007	S	13	09	1.3	4	89	09	0.0
	1200			29	1005	S	15	10	1.3	4	66	07	0.0
	1800			28	1004	S	15	13	1.3	4	73	06	0.0
17-04-26 (Friday)	0001	32	24	28	1008	SW	15	11	1.3	4	89	09	0.0
	0600			27	1009	SSW	11	07	1.3	4	90	15	0.0
	1200			29	1008	SSW	12	08	1.3	4	73	08	0.0
	1800			28	1007	SW	11	07	1.3	4	85	14	0.0
18-04-26 (Saturday)	0001	31	26	28	1008	SSW	15	11	1.3	4	88	09	0.0
	0600			27	1009	SSW	14	10	1.3	4	91	15	0.0
	1200			29	1008	SW	12	08	1.3	4	74	08	0.0
	1800			28	1007	SW	11	07	1.3	4	87	14	0.0

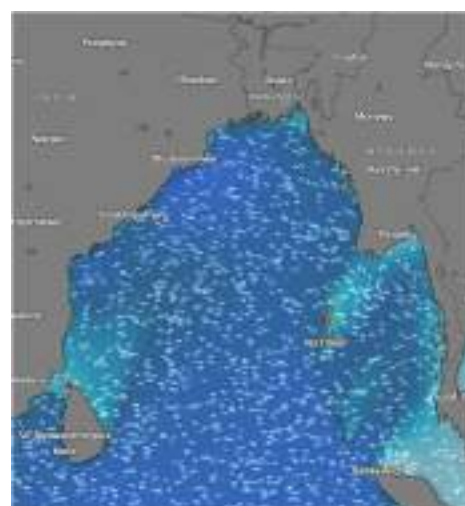
15 Apr 2026



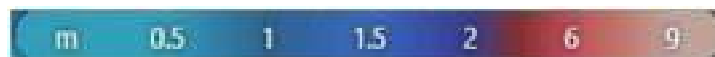
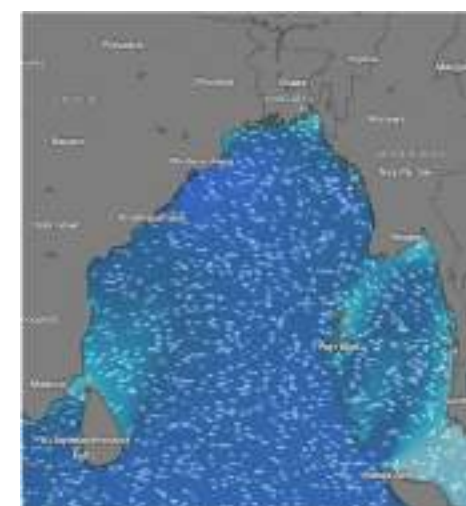
16 Apr 2026



17 Apr 2026



18 Apr 2026



Significant wave height (m)



MARINE WEATHER FORECAST (15 to 22 April 2026)

OUTER EEZ (18° 48' N, 090° 30' E)

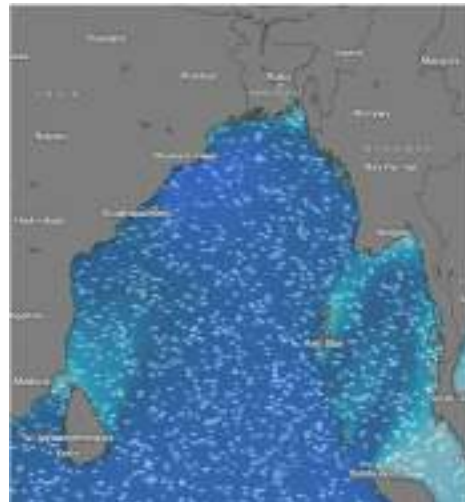


Date	Time	Air Temp (°C)		Sea Surface Temp (°C)	Baro Pressure (mbar)	Wind Direction	Wind Spd (kts)		Wave Ht (m)	Sea State	Humidity (%)	Prob of Rain (%)	Amount of Rain (mm)
		Max	Min				Gusting	Avg					
19-04-26 (Sunday)	0001	32	26	28	1008	W	16	12	1.3	4	90	10	0.0
	0600			27	1009	SW	18	14	1.3	4	91	17	0.0
	1200			29	1008	W	15	10	1.3	4	75	15	0.0
	1800			28	1007	W	14	11	1.3	4	85	19	0.0
20-04-26 (Monday)	0001	31	26	27	1009	NNE	15	12	1.1	3	91	10	0.0
	0600			26	1010	ENE	15	12	1.3	3	89	12	0.0
	1200			29	1009	WSW	18	14	1.4	4	76	13	0.0
	1800			28	1008	W	20	13	1.4	4	82	14	0.0
21-04-26 (Tuesday)	0001	31	26	27	1009	NNE	15	12	1.1	3	91	10	0.0
	0600			26	1010	ENE	15	12	1.3	3	89	12	0.0
	1200			29	1009	WSW	18	14	1.4	4	76	13	0.0
	1800			28	1008	W	20	13	1.4	4	82	14	0.0
22-04-26 (Wednesday)	0001	31	26	27	1009	NNE	15	12	1.1	3	91	10	0.0
	0600			26	1010	ENE	15	12	1.3	3	89	12	0.0
	1200			29	1009	WSW	18	14	1.4	4	76	13	0.0
	1800			28	1008	W	20	13	1.4	4	82	14	0.0

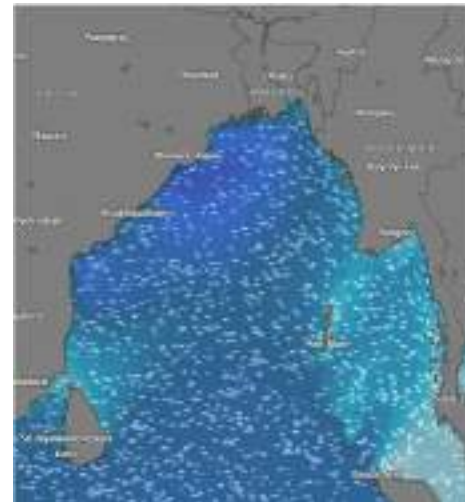
19 Apr 2026



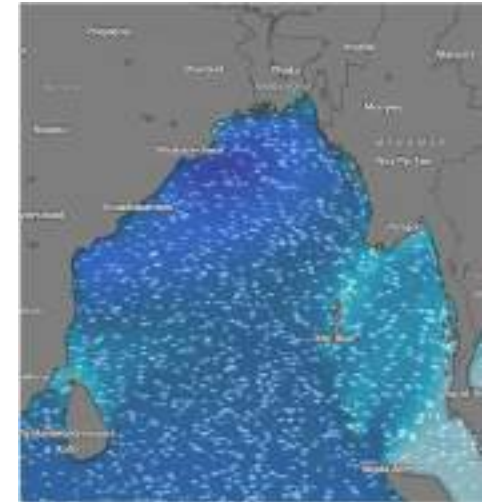
20 Apr 2026



21 Apr 2026



22 Apr 2026



Significant wave height (m)



PREDICTED SURFACE PRESSURE FORECAST (15 to 21 Apr 2026)



15 Apr 2026



16 Apr 2026



17 Apr 2026



18 Apr 2026



19 Apr 2026



20 Apr 2026



21 Apr 2026

