



SUMMARY OF MARINE WEATHER FORECAST
COASTAL AREA OF BANGLADESH
DATE: 14-21 SEP 2024



Fleet forecast	The land depression over Barishal and adjoining area moved Northwestwards and centered at 06 am Today over Jashore and adjoining area. It is likely to move Northwestwards further. Under its influence deep convection is taking place over North Bay and adjoining Coastal areas of Bangladesh.
Wind direction, speed	South/south-easterly 11 kts, (Temporary gusting up to 34 kts).
Wave height & sea state	Wave height: 0.1 to 2.7 m (Sea state:1 to 5).
Sea surface temperature	26°C - 29°C (May remain nearly unchanged).
Baro pressure	996- 1008 mb
Rainfall	Light to moderate rain/thunder showers over Bay of Bengal & adjoining area with moderately heavy to heavy falls at places over Rangpur, Rajshahi, Dhaka, Khulna, Barishal & Chattogram division.

Outlook for 14 to 21 Sep 2024: Rainfall activity is likely to decrease at the end of said period.

Last 24 hours rainfall amount 150 mm Patenga area.

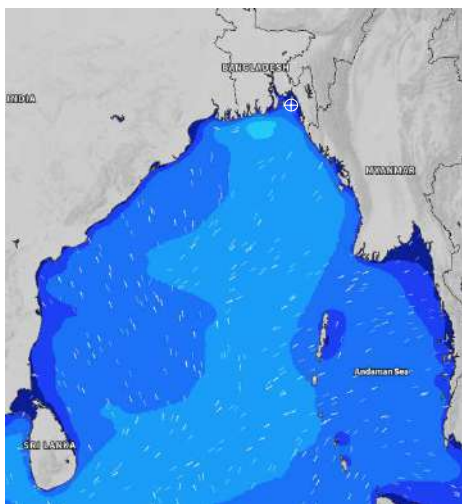


MARINE WEATHER FORECAST (14-21 Sep 2024) NEAR AUTHORITY BUOY (22° 12' N, 091° 38' E)

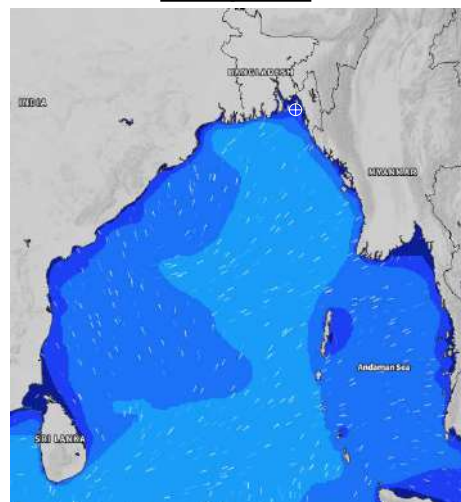


Date	Time	Air Temp (°C)		Sea Surface Temp (°C)	Baro Pressure (mbar)	Wind Direction	Wind Spd (kts)		Wave Ht (m)	Sea State	Humidity (%)	Prob of Rain
		Max	Min				Max	Avg				
14-09-24 (Saturday)	0001	27	26	27	999	S	31	26	0.7	3	92	96% (5.6 mm)
	0600			26	998	SSE	33	25	0.6	3	94	91% (4.5 mm)
	1200			26	1001	SE	27	20	0.5	2	92	87% (3.2 mm)
	1800			26	1000	SE	28	21	0.4	2	90	79% (3.1 mm)
15-09-24 (Sunday)	0001	29	26	27	1001	SSE	30	22	0.6	3	91	56% (0.6 mm)
	0600			26	1002	SE	27	22	0.6	3	93	68% (0.7 mm)
	1200			29	1002	S	22	18	0.5	2	88	52% (0.6 mm)
	1800			29	1002	SSE	21	16	0.4	2	89	36% (0.2 mm)
16-09-24 (Monday)	0001	30	27	27	1004	SSE	20	15	0.4	2	91	49% (0.5 mm)
	0600			27	1004	SE	17	12	0.3	2	92	61% (0.6 mm)
	1200			29	1005	SSW	11	10	0.2	2	85	55% (0.5 mm)
	1800			29	1003	SSW	10	8	0.2	2	88	30% (0.2 mm)
17-09-24 (Tuesday)	0001	31	27	28	1005	SSE	7	6	0.1	1	90	46% (0.5 mm)
	0600			27	1005	SE	6	5	0.1	1	93	55% (0.5 mm)
	1200			28	1006	WSW	6	5	0.1	1	84	52% (0.5 mm)
	1800			29	1003	WSW	4	3	0.1	1	87	24% (0.1 mm)

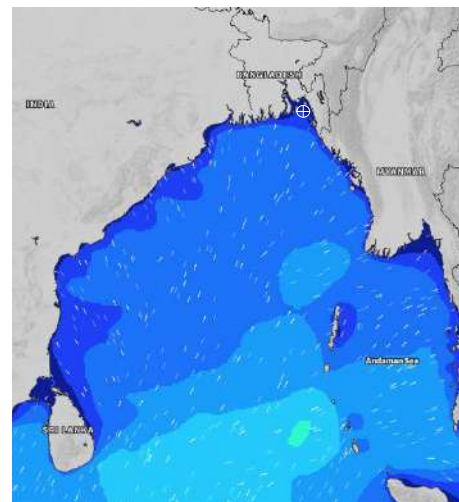
14 Sep 2024



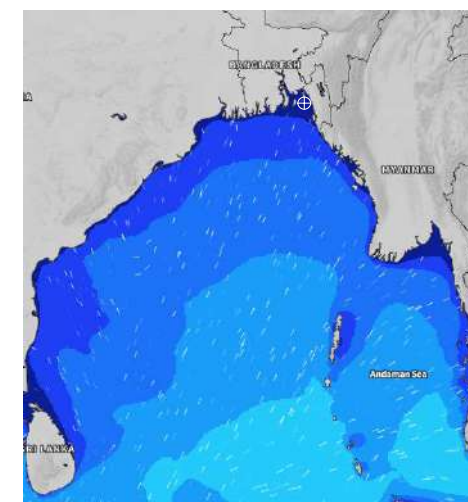
15 Sep 2024



16 Sep 2024



17 Sep 2024



Significant wave height (m)

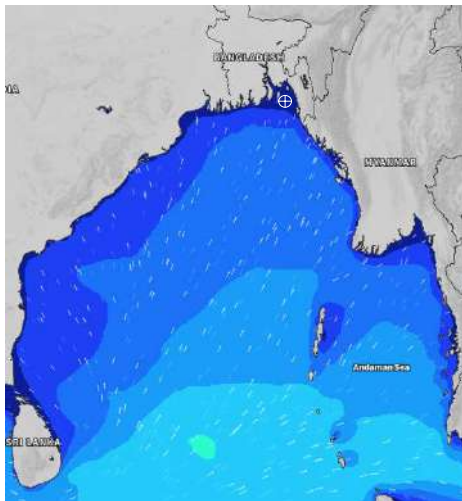


MARINE WEATHER FORECAST (14-21 Sep 2024) NEAR AUTHORITY BUOY (22° 12' N, 091° 38' E)

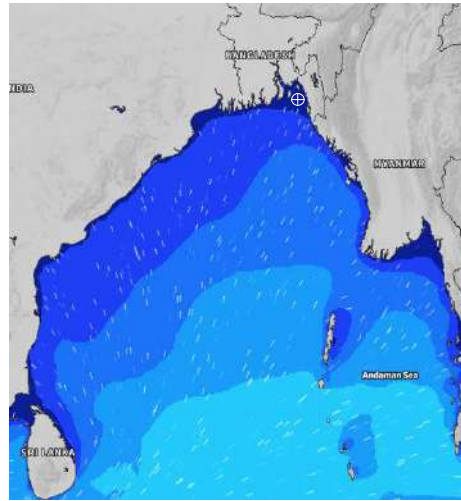


Date	Time	Air Temp (°C)		Sea Surface Temp (°C)	Baro Pressure (mbar)	Wind Direction	Wind Spd (kts)		Wave Ht (m)	Sea State	Humidity (%)	Prob of Rain
		Max	Min				Max	Avg				
18-09-24 (Wednesday)	0001	27	26	28	1005	S	4	3	0.1	1	92	46% (0.5 mm)
	0600			27	1005	SE	4	3	0.1	1	94	62% (0.6 mm)
	1200			28	1005	WSW	6	5	0.1	1	89	37% (0.2 mm)
	1800			29	1003	WSW	6	5	0.1	1	91	55% (0.5 mm)
19-09-24 (Thursday)	0001	29	26	28	1005	SSE	5	4	0.1	1	93	66% (0.6 mm)
	0600			27	1005	SSE	8	7	0.1	1	94	58% (0.6 mm)
	1200			28	1005	SSW	4	3	0.1	1	88	54% (0.5 mm)
	1800			29	1004	SSW	7	6	0.1	1	90	43% (0.4 mm)
20-09-24 (Friday)	0001	30	27	28	1005	SSE	5	4	0.1	1	92	65% (0.6 mm)
	0600			27	1005	SE	6	4	0.1	1	94	34% (0.2 mm)
	1200			28	1005	WSW	5	3	0.1	1	84	56% (0.5 mm)
	1800			29	1004	S	6	5	0.1	1	89	42% (0.4 mm)
21-09-24 (Saturday)	0001	31	27	28	1006	SSE	6	5	0.1	1	91	68% (0.7 mm)
	0600			27	1006	SE	6	5	0.1	1	93	37% (0.2 mm)
	1200			28	1007	WSW	7	6	0.1	1	83	53% (0.5 mm)
	1800			29	1006	S	4	3	0.1	1	89	42% (0.4 mm)

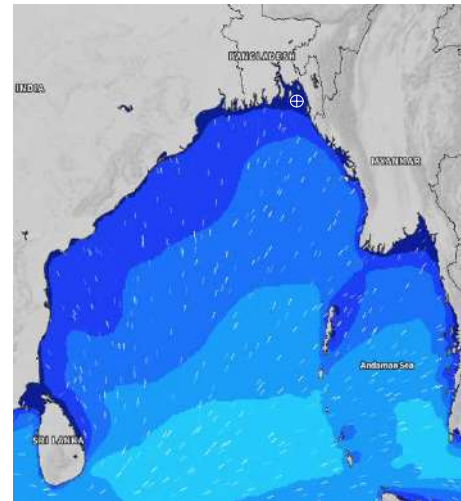
18 Sep 2024



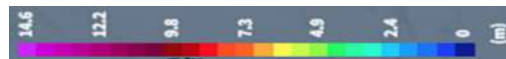
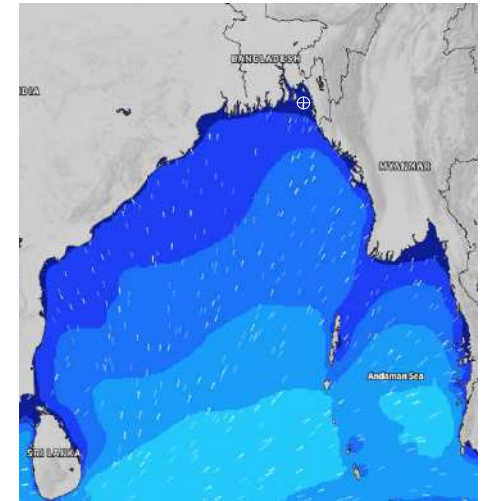
19 Sep 2024



20 Sep 2024



21 Sep 2024



Significant wave height (m)

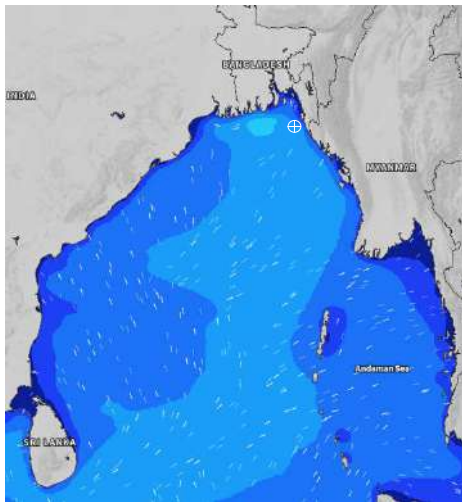


MARINE WEATHER FORECAST (14-21 Sep 2024) 20 NM WEST OF ELEPHANT POINT (21° 10' N, 091° 42' E)

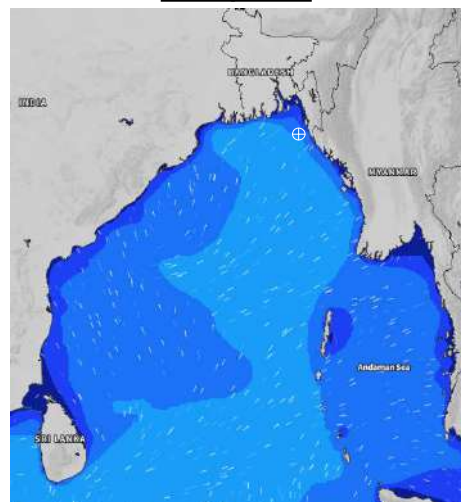


Date	Time	Air Temp (°C)		Sea Surface Temp (°C)	Baro Pressure (mbar)	Wind Direction	Wind Spd (kts)		Wave Ht (m)	Sea State	Humidity (%)	Prob of Rain
		Max	Min				Max	Avg				
14-09-24 (Saturday)	0001	27	26	28	1000	S	26	21	2.2	4	92	93% (5.6 mm)
	0600			27	1000	S	24	21	2.0	4	94	90% (4.5 mm)
	1200			27	1001	SSW	22	20	1.9	4	90	89% (4.1 mm)
	1800			28	1000	SSE	20	18	1.8	4	92	66% (1.2 mm)
15-09-24 (Sunday)	0001	29	26	28	1002	SSE	22	20	1.9	4	90	67% (0.7 mm)
	0600			28	1002	SSE	18	16	1.7	4	93	54% (0.6 mm)
	1200			28	1003	SSE	18	18	1.7	4	87	53% (0.5 mm)
	1800			29	1002	SSE	17	15	1.5	4	89	45% (0.5 mm)
16-09-24 (Monday)	0001	30	26	29	1004	SSE	16	15	1.5	4	91	56% (0.6 mm)
	0600			28	1004	SE	15	14	1.4	4	94	77% (0.7 mm)
	1200			28	1005	SSE	13	11	1.3	4	86	62% (0.6 mm)
	1800			29	1003	S	10	9	1.1	3	89	45% (0.4 mm)
17-09-24 (Tuesday)	0001	31	27	29	1005	SSE	6	5	1.0	3	92	56% (0.6 mm)
	0600			28	1005	SE	6	5	1.0	3	94	75% (0.7 mm)
	1200			29	1006	SSW	4	3	0.9	3	85	63% (0.6 mm)
	1800			29	1004	NW	4	3	0.9	3	88	46% (0.4 mm)

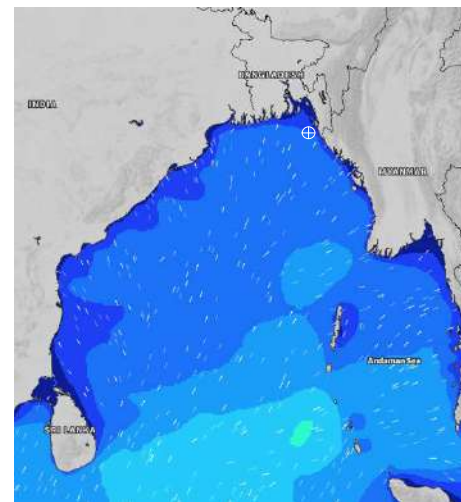
14 Sep 2024



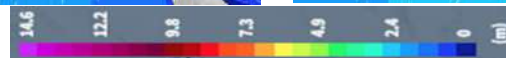
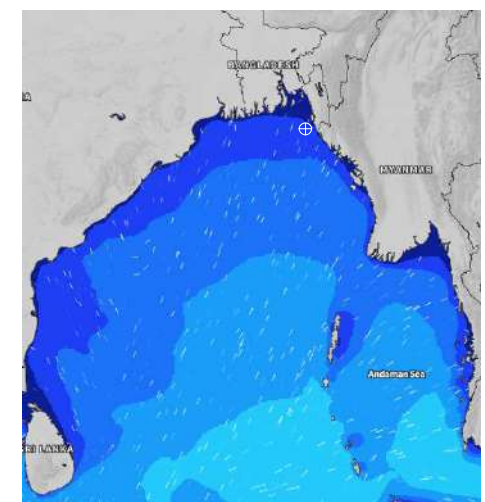
15 Sep 2024



16 Sep 2024



17 Sep 2024



Significant wave height (m)

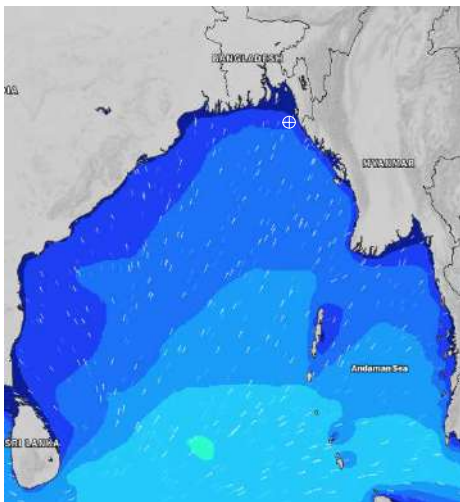


MARINE WEATHER FORECAST (14-21 Sep 2024) 20 NM WEST OF ELEPHANT POINT (21° 10' N, 091° 42' E)

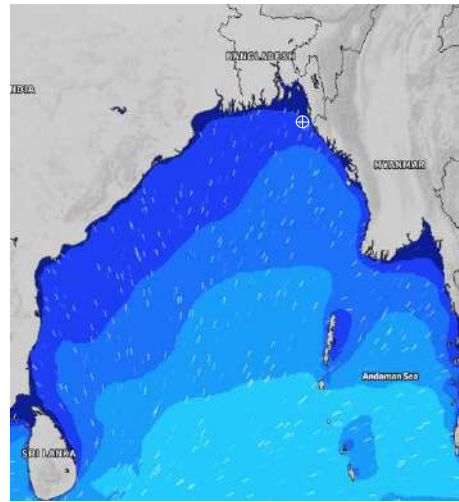


Date	Time	Air Temp (°C)		Sea Surface Temp (°C)	Baro Pressure (mbar)	Wind Direction	Wind Spd (kts)		Wave Ht (m)	Sea State	Humidity (%)	Prob of Rain
		Max	Min				Max	Avg				
18-09-24 (Wednesday)	0001	31	27	29	1005	SSE	4	2	0.9	3	91	46% (0.4 mm)
	0600			27	1005	SE	3	2	0.9	3	92	45% (0.5 mm)
	1200			29	1005	S	5	3	1.0	3	80	63% (0.6 mm)
	1800			29	1003	E	5	3	1.0	3	86	28% (0.1 mm)
19-09-24 (Thursday)	0001	31	27	28	1005	SSE	4	3	0.9	3	91	47% (0.5 mm)
	0600			27	1006	WSW	3	2	0.9	3	92	41% (0.5 mm)
	1200			26	1006	NW	3	2	0.9	3	79	65% (0.6 mm)
	1800			27	1004	WNW	6	5	0.9	3	85	23% (0.1 mm)
20-09-24 (Friday)	0001	32	27	28	1006	W	4	3	0.8	3	91	45% (0.4 mm)
	0600			28	1005	ESE	5	3	0.8	3	92	46% (0.5 mm)
	1200			29	1006	SW	5	4	0.9	3	79	68% (0.6 mm)
	1800			29	1004	W	6	5	0.9	3	85	26% (0.1 mm)
21-09-24 (Saturday)	0001	32	27	28	1006	W	8	7	0.9	3	91	45% (0.4 mm)
	0600			28	1006	ESE	7	6	0.9	3	92	47% (0.5 mm)
	1200			29	1007	SW	5	4	0.9	3	79	62% (0.6 mm)
	1800			29	1004	W	3	2	0.9	3	85	30% (0.2 mm)

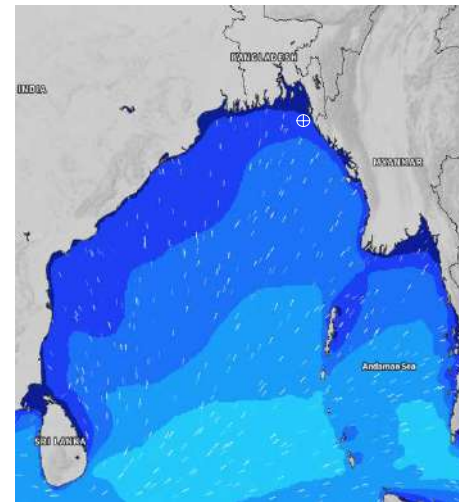
18 Sep 2024



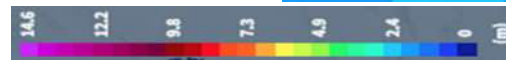
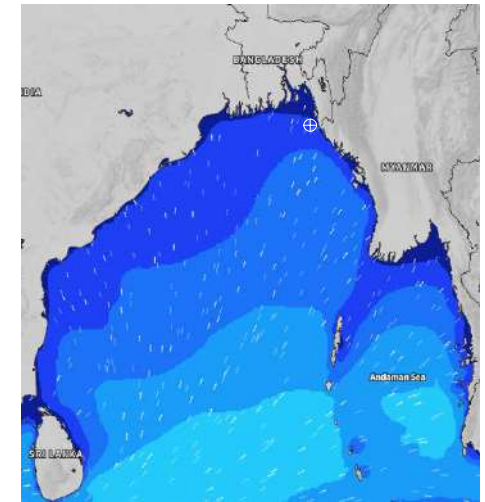
19 Sep 2024



20 Sep 2024



21 Sep 2024



Significant wave height (m)



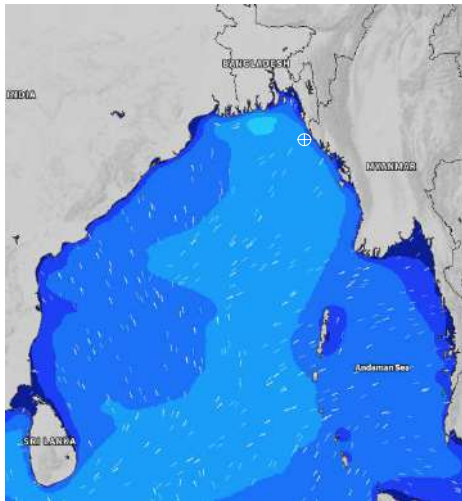
MARINE WEATHER FORECAST (14-21 Sep 2024)

15 NM WEST OF ST. MARTIN'S LIGHT HOUSE (20° 37' N, 092° 03' E)

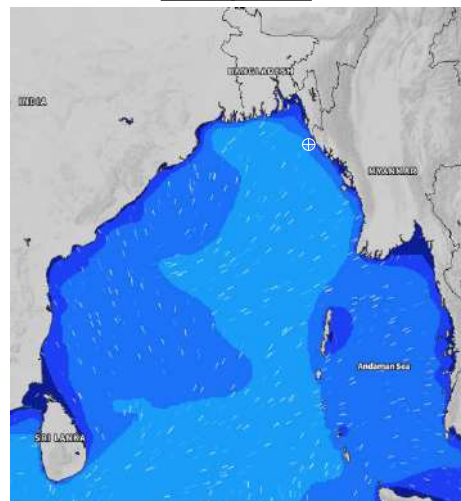


Date	Time	Air Temp (°C)		Sea Surface Temp (°C)	Baro Pressure (mbar)	Wind Direction	Wind Spd (kts)		Wave Ht (m)	Sea State	Humidity (%)	Prob of Rain
		Max	Min				Max	Avg				
14-09-24 (Saturday)	0001	27	26	28	1002	SSW	18	15	2.2	4	92	97% (4.6 mm)
	0600			28	1000	SSW	20	17	2.0	4	94	95% (5.9 mm)
	1200			27	1002	SSW	27	21	2.1	4	93	91% (5.6 mm)
	1800			28	1000	SSW	18	16	2.0	4	90	63% (1.4 mm)
15-09-24 (Sunday)	0001	29	26	28	1003	S	21	18	2.1	4	93	77% (0.8 mm)
	0600			28	1002	SSW	13	12	2.0	4	94	92% (3.9 mm)
	1200			28	1004	SSE	11	10	1.8	4	91	68% (0.8 mm)
	1800			29	1002	SSE	11	10	1.8	4	90	46% (0.5 mm)
16-09-24 (Monday)	0001	30	27	29	1004	SSE	12	11	1.7	4	92	77% (0.8 mm)
	0600			28	1003	SE	9	9	1.5	4	94	92% (2.8 mm)
	1200			29	1005	SE	11	10	1.4	4	88	66% (0.7 mm)
	1800			29	1003	SSW	8	7	1.3	4	90	43% (0.5 mm)
17-09-24 (Tuesday)	0001	31	27	29	1005	S	4	3	1.3	4	92	78% (0.9 mm)
	0600			28	1005	SSE	4	3	1.2	3	94	82% (2.5 mm)
	1200			28	1006	SE	5	4	1.1	3	88	66% (0.7 mm)
	1800			29	1003	W	5	4	1.1	3	89	44% (0.5 mm)

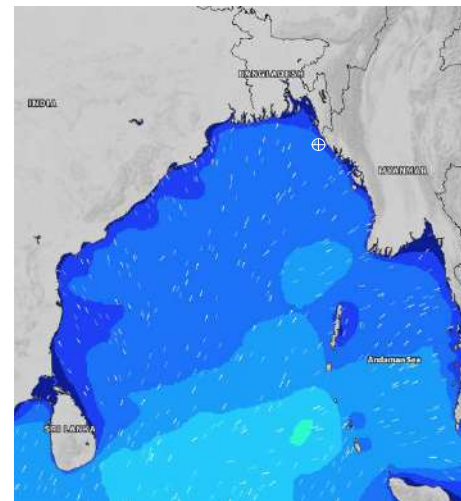
14 Sep 2024



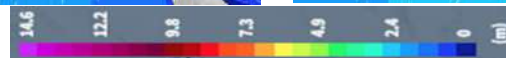
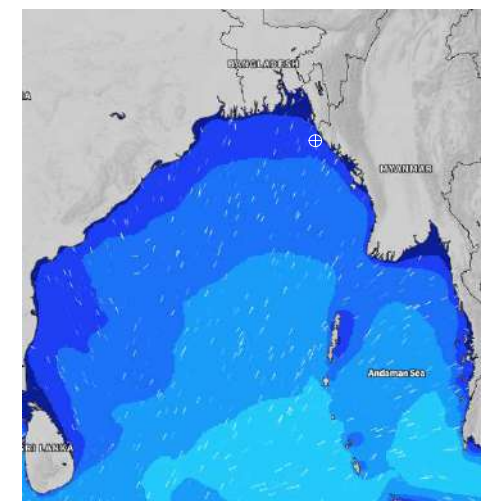
15 Sep 2024



16 Sep 2024



17 Sep 2024



Significant wave height (m)



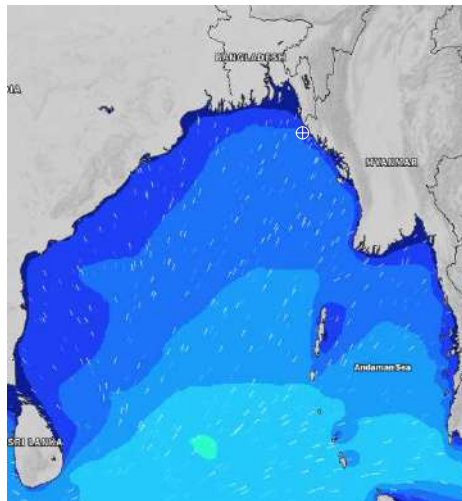
MARINE WEATHER FORECAST (14-21 Sep 2024)

15 NM WEST OF ST. MARTIN'S LIGHT HOUSE (20° 37' N, 092° 03' E)

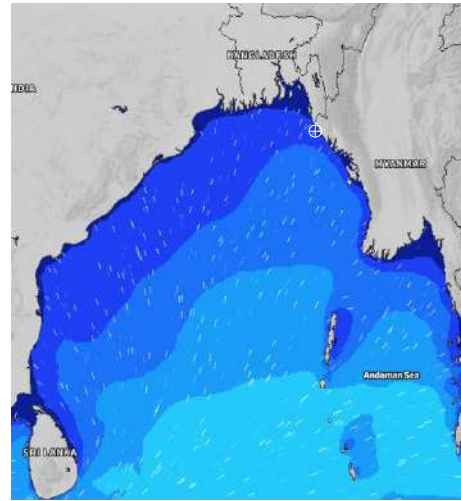


Date	Time	Air Temp (°C)		Sea Surface Temp (°C)	Baro Pressure (mbar)	Wind Direction	Wind Spd (kts)		Wave Ht (m)	Sea State	Humidity (%)	Prob of Rain
		Max	Min				Max	Avg				
18-09-24 (Wednesday)	0001	30	27	29	1005	SSE	3	2	1.1	3	91	68% (0.7 mm)
	0600			28	1004	SE	4	3	1.2	3	94	66% (0.6 mm)
	1200			28	1006	SE	7	6	1.2	3	81	67% (0.6 mm)
	1800			29	1003	SSW	6	5	1.3	4	85	25% (0.0 mm)
19-09-24 (Thursday)	0001	30	27	28	1006	S	4	3	1.2	3	90	48% (0.5 mm)
	0600			28	1004	SSW	5	4	1.2	3	90	53% (0.5 mm)
	1200			27	1007	SE	5	4	1.1	3	79	66% (0.6 mm)
	1800			27	1003	SW	6	4	1.1	3	85	27% (0.1 mm)
20-09-24 (Friday)	0001	31	27	28	1006	S	6	5	1.1	3	90	45% (0.5 mm)
	0600			28	1004	SSW	8	7	1.1	3	90	58% (0.5 mm)
	1200			27	1007	SE	4	3	1.2	3	79	66% (0.6 mm)
	1800			27	1004	SW	6	5	1.2	3	85	28% (0.1 mm)
21-09-24 (Saturday)	0001	32	27	28	1006	S	5	4	1.1	3	91	49% (0.5 mm)
	0600			28	1005	SSW	6	5	1.2	3	93	56% (0.5 mm)
	1200			27	1008	SE	4	3	1.1	3	76	66% (0.6 mm)
	1800			27	1004	SW	4	3	1.1	3	88	30% (0.2 mm)

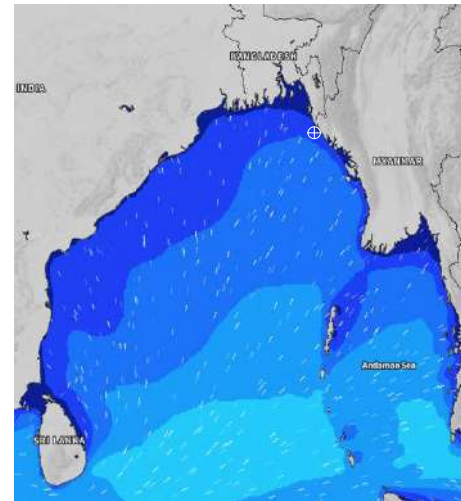
18 Sep 2024



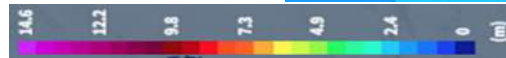
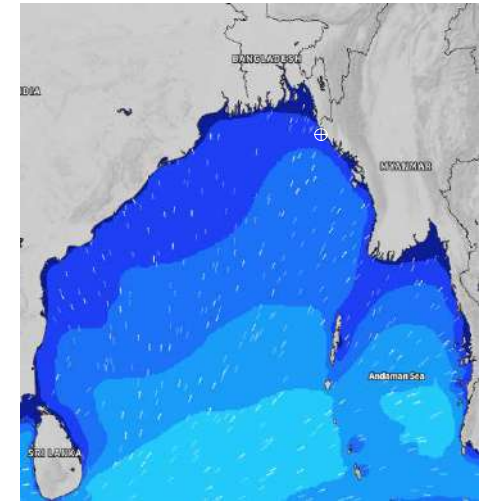
19 Sep 2024



20 Sep 2024



21 Sep 2024



Significant wave height (m)



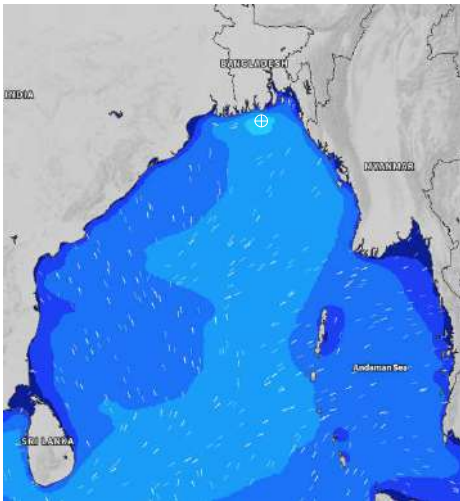
MARINE WEATHER FORECAST (14- 21 Sep 2024)

40 NM ESE OF PAYRA FAIRWAY (21° 07' N, 090° 45' E)

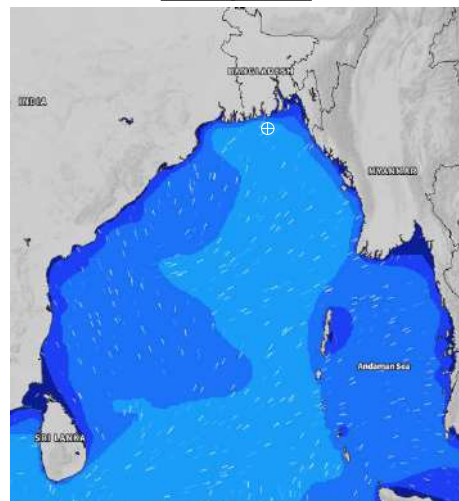


Date	Time	Air Temp (°C)		Sea Surface Temp (°C)	Baro Pressure (mbar)	Wind Direction	Wind Spd (kts)		Wave Ht (m)	Sea State	Humidity (%)	Prob of Rain
		Max	Min				Max	Avg				
14-09-24 (Saturday)	0001	28	26	27	998	SW	30	27	2.5	4	92	96% (6.5 mm)
	0600			27	998	SSW	31	26	2.7	5	94	78% (2.5 mm)
	1200			28	1000	SW	25	21	2.4	4	91	75% (1.9 mm)
	1800			29	999	SSW	20	18	2.3	4	90	56% (0.6 mm)
15-09-24 (Sunday)	0001	29	26	29	1001	SSW	25	22	2.3	4	91	78% (0.8 mm)
	0600			29	1001	SW	25	20	2.4	4	93	84% (1.5 mm)
	1200			29	1002	S	22	17	2.1	4	84	53% (0.5 mm)
	1800			29	1001	S	19	16	1.9	4	90	25% (0.1 mm)
16-09-24 (Monday)	0001	31	27	29	1003	S	16	14	1.8	4	92	76% (0.8 mm)
	0600			29	1003	S	12	11	1.6	4	92	88% (0.9 mm)
	1200			29	1004	S	9	8	1.4	4	87	57% (0.6 mm)
	1800			29	1003	S	10	9	1.3	4	86	26% (0.1 mm)
17-09-24 (Tuesday)	0001	31	27	29	1005	S	10	9	1.3	4	91	78% (0.8 mm)
	0600			29	1005	S	7	6	1.2	3	93	87% (0.9 mm)
	1200			29	1006	S	5	4	1.1	3	87	55% (0.5 mm)
	1800			29	1003	S	4	2	1.1	3	89	26% (0.1 mm)

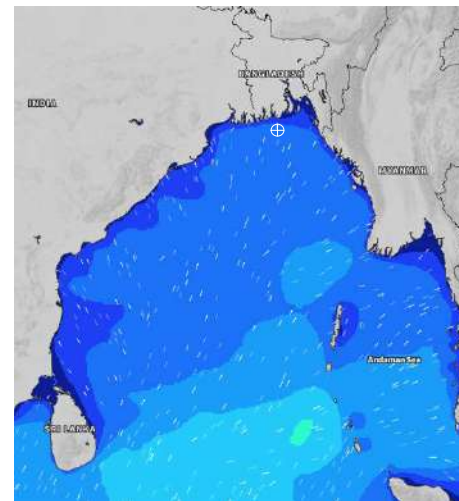
14 Sep 2024



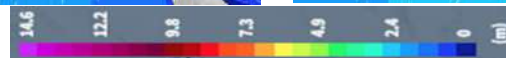
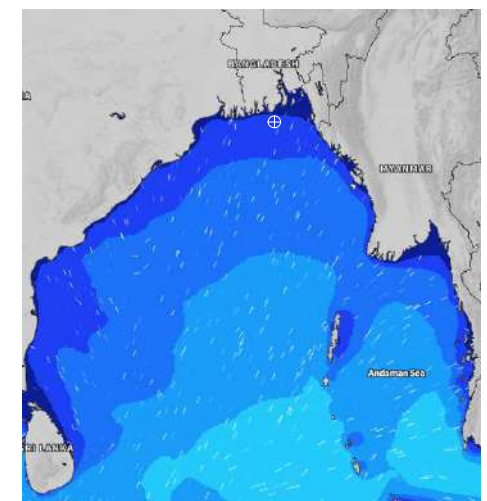
15 Sep 2024



16 Sep 2024



17 Sep 2024



Significant wave height (m)



MARINE WEATHER FORECAST (14- 21 Sep 2024) 40 NM ESE OF PAYRA FAIRWAY (21° 07' N, 090° 45' E)



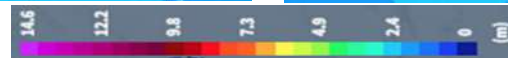
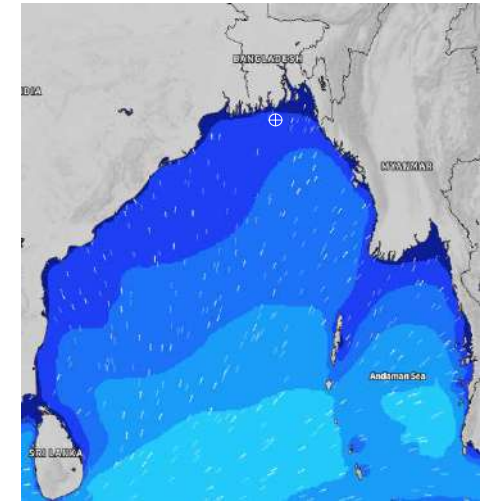
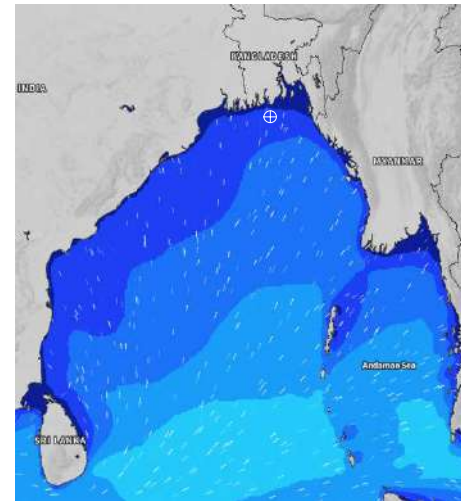
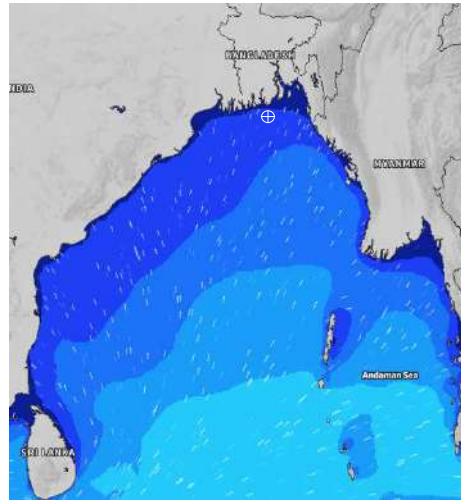
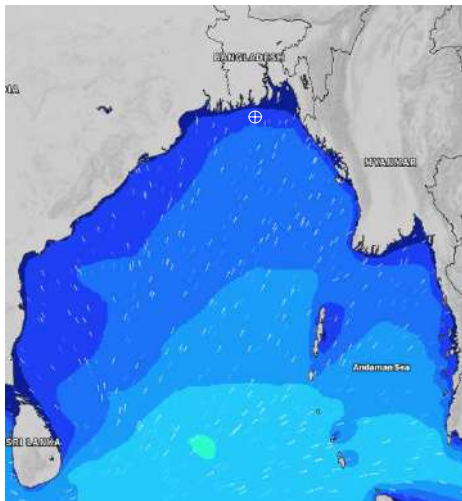
Date	Time	Air Temp (°C)		Sea Surface Temp (°C)	Baro Pressure (mbar)	Wind Direction	Wind Spd (kts)		Wave Ht (m)	Sea State	Humidity (%)	Prob of Rain
		Max	Min				Max	Avg				
18-09-24 (Wednesday)	0001	31	27	29	1005	S	4	3	1.1	3	91	68% (0.7 mm)
	0600			28	1004	SSE	4	3	1.2	3	90	42% (0.3 mm)
	1200			27	1005	S	5	4	1.2	3	81	55% (0.5 mm)
	1800			28	1003	SSE	5	4	1.2	3	88	48% (0.5 mm)
19-09-24 (Thursday)	0001	32	27	29	1005	SSW	6	4	1.2	3	89	53% (0.5 mm)
	0600			28	1005	SSW	5	4	1.1	3	91	58% (0.6 mm)
	1200			27	1006	SSW	4	3	1.1	3	79	57% (0.6 mm)
	1800			28	1004	SSW	6	5	1.1	3	85	26% (0.1 mm)
20-09-24 (Friday)	0001	32	27	28	1006	SSW	7	6	1.1	3	89	53% (0.5 mm)
	0600			28	1005	S	5	4	1.1	3	91	55% (0.5 mm)
	1200			29	1006	S	3	2	1.1	3	79	57% (0.5 mm)
	1800			29	1004	S	5	4	1.2	3	85	30% (0.1 mm)
21-09-24 (Saturday)	0001	32	27	28	1006	SSW	8	7	1.1	3	90	55% (0.5 mm)
	0600			28	1006	S	5	4	1.1	3	91	56% (0.5 mm)
	1200			29	1007	S	4	3	1.1	3	78	58% (0.5 mm)
	1800			29	1004	S	4	3	1.1	3	88	32% (0.2 mm)

18 Sep 2024

19 Sep 2024

20 Sep 2024

21 Sep 2024



Significant wave height (m)



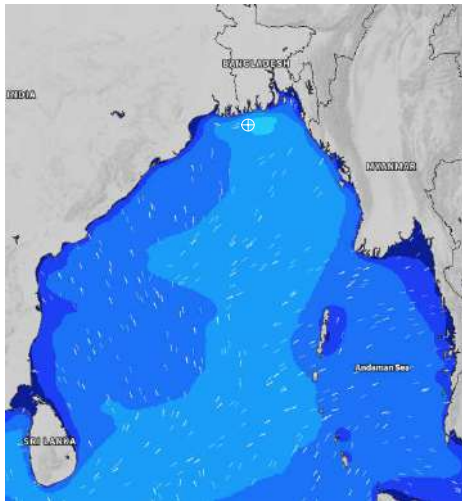
MARINE WEATHER FORECAST (14- 21 Sep 2024)

10 NM SOUTH OF MONGLA FAIRWAY (21° 16' N, 089° 34' E)

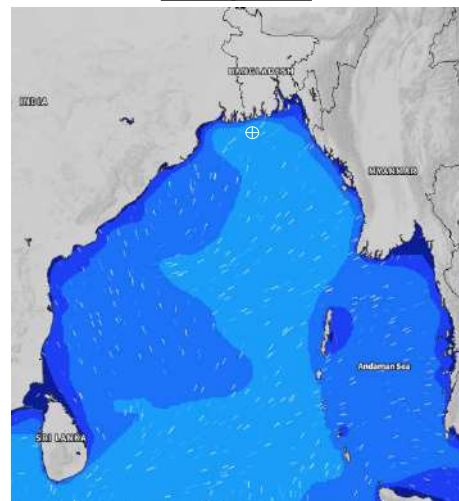


Date	Time	Air Temp (°C)		Sea Surface Temp (°C)	Baro Pressure (mbar)	Wind Direction	Wind Spd (kts)		Wave Ht (m)	Sea State	Humidity (%)	Prob of Rain
		Max	Min				Max	Avg				
14-09-24 (Saturday)	0001	28	26	27	997	W	23	21	2.0	4	92	93% (3.5 mm)
	0600			27	996	WSW	30	27	2.4	4	94	85% (1.8 mm)
	1200			27	997	SW	34	26	2.5	4	90	89% (2.5 mm)
	1800			27	997	WSW	28	26	2.6	5	91	66% (0.7 mm)
15-09-24 (Sunday)	0001	30	26	27	998	WSW	29	25	2.5	4	91	78% (1.5 mm)
	0600			28	999	WSW	31	27	2.7	5	95	83% (2.2 mm)
	1200			29	1000	SW	27	22	2.3	4	86	78% (1.5 mm)
	1800			29	1000	SW	23	20	2.3	4	89	26% (0.1 mm)
16-09-24 (Monday)	0001	32	27	29	1002	SSW	18	17	2.0	4	91	78% (1.3 mm)
	0600			29	1002	SSW	18	17	1.7	4	94	87% (1.5 mm)
	1200			29	1003	S	15	13	1.5	4	84	78% (1.1 mm)
	1800			29	1002	S	14	13	1.4	4	88	26% (0.1 mm)
17-09-24 (Tuesday)	0001	32	27	29	1004	S	14	12	1.3	4	90	78% (1.6 mm)
	0600			29	1004	S	9	8	1.2	4	94	87% (1.7 mm)
	1200			29	1006	S	7	6	1.1	4	85	75% (0.9 mm)
	1800			29	1003	SSE	7	6	1.1	4	89	26% (0.1 mm)

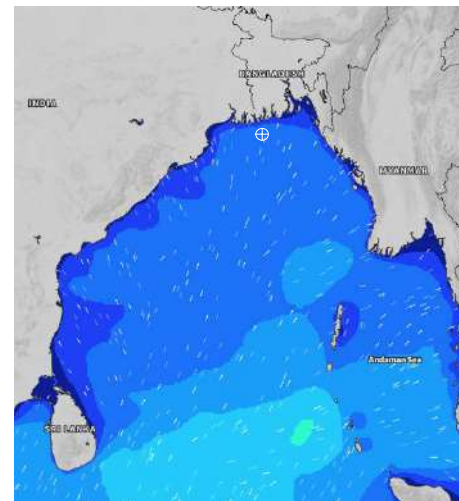
14 Sep 2024



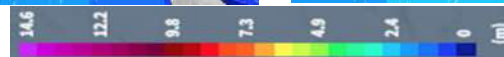
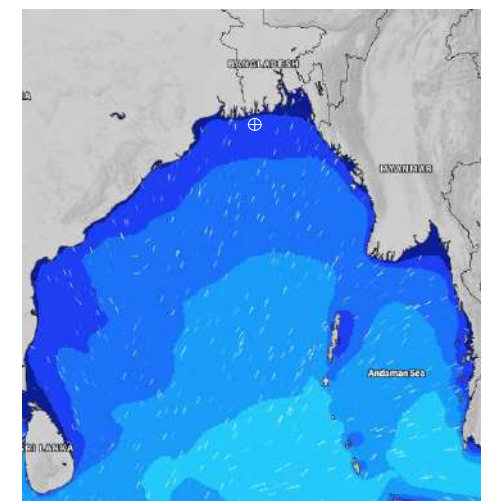
15 Sep 2024



16 Sep 2024



17 Sep 2024



Significant wave height (m)



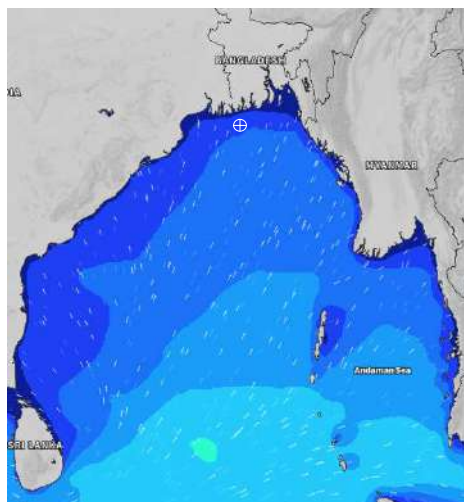
MARINE WEATHER FORECAST (14- 21 Sep 2024)

10 NM SOUTH OF MONGLA FAIRWAY (21° 16' N, 089° 34' E)

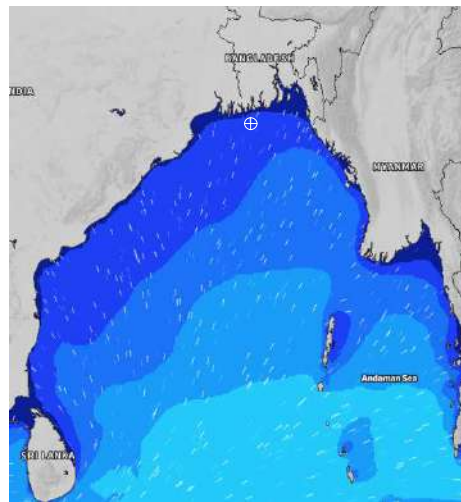


Date	Time	Air Temp (°C)		Sea Surface Temp (°C)	Baro Pressure (mbar)	Wind Direction	Wind Spd (kts)		Wave Ht (m)	Sea State	Humidity (%)	Prob of Rain
		Max	Min				Max	Avg				
18-09-24 (Wednesday)	0001	32	27	29	1004	SSW	7	6	1.0	3	91	69% (0.7 mm)
	0600			29	1004	SW	4	3	1.1	3	92	56% (0.6 mm)
	1200			29	1005	SSW	5	4	1.1	3	83	55% (0.5 mm)
	1800			29	1003	SSW	6	5	1.1	3	89	21% (0.0 mm)
19-09-24 (Thursday)	0001	32	27	29	1005	S	6	5	1.1	3	92	27% (0.1 mm)
	0600			29	1005	WSW	6	5	1.0	3	94	46% (0.5 mm)
	1200			28	1006	SW	4	3	1.0	3	82	68% (0.6 mm)
	1800			29	1004	SSW	5	4	1.0	3	90	18% (0.0 mm)
20-09-24 (Friday)	0001	32	27	29	1005	S	7	6	0.9	3	91	26% (0.1 mm)
	0600			29	1005	S	7	6	0.9	3	93	48% (0.5 mm)
	1200			28	1006	S	4	3	1.0	3	80	69% (0.7 mm)
	1800			29	1004	SE	6	5	1.0	3	90	30% (0.1 mm)
21-09-24 (Saturday)	0001	32	27	29	1006	S	10	9	1.0	3	92	26% (0.1 mm)
	0600			29	1006	S	9	8	1.0	3	93	42% (0.4 mm)
	1200			28	1007	S	5	4	1.0	3	81	60% (0.5 mm)
	1800			29	1004	SE	4	3	1.0	3	89	23% (0.0 mm)

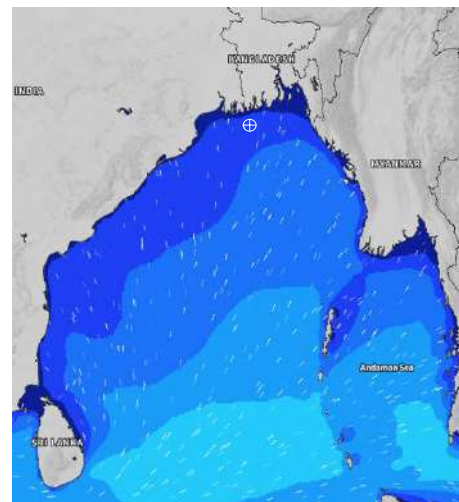
18 Sep 2024



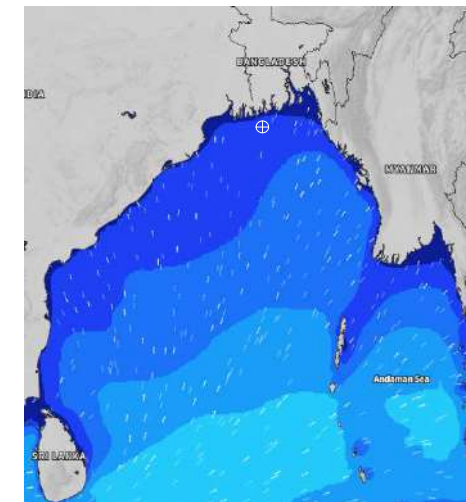
19 Sep 2024



20 Sep 2024



21 Sep 2024



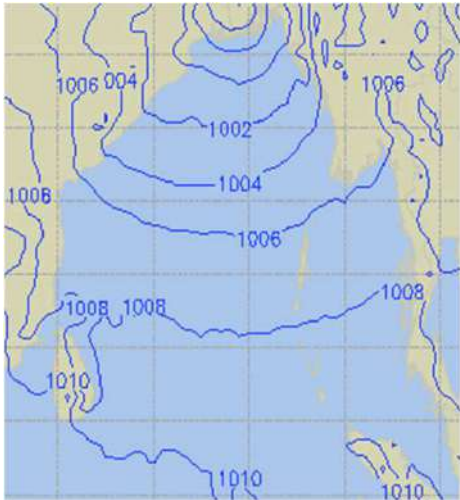
Significant wave height (m)



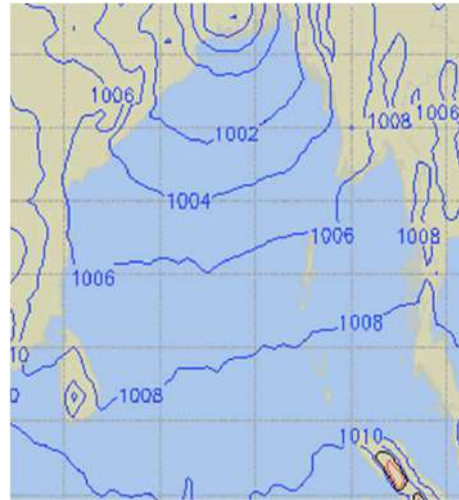
PREDICTED SURFACE PRESSURE FORECAST (14- 20 Sep 2024)



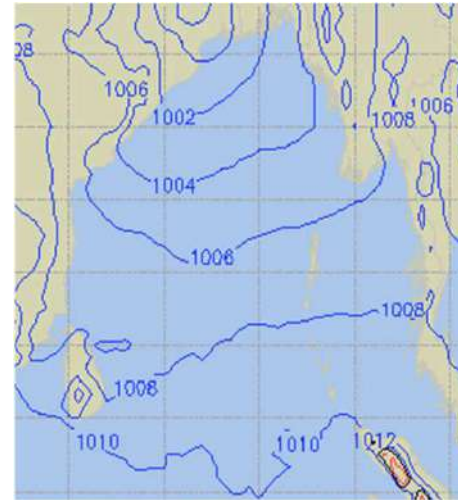
14 Sep 2024



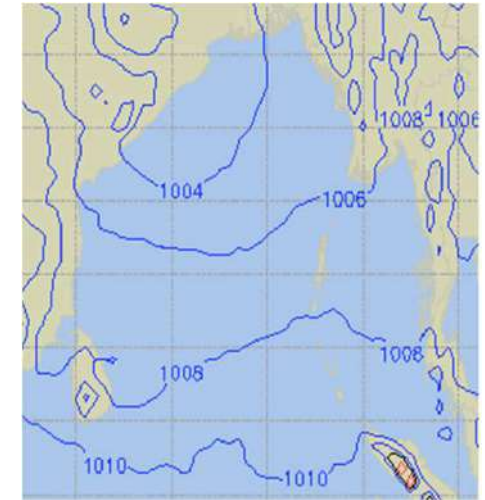
15 Sep 2024



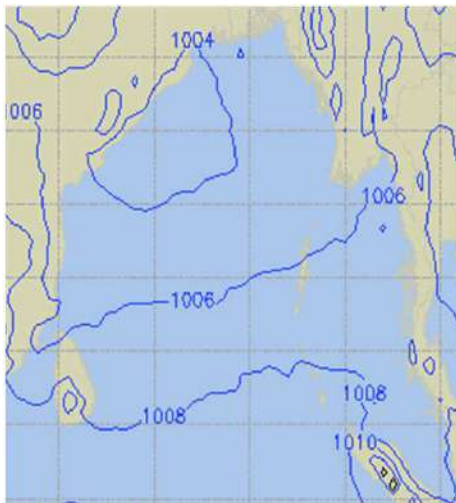
16 Sep 2024



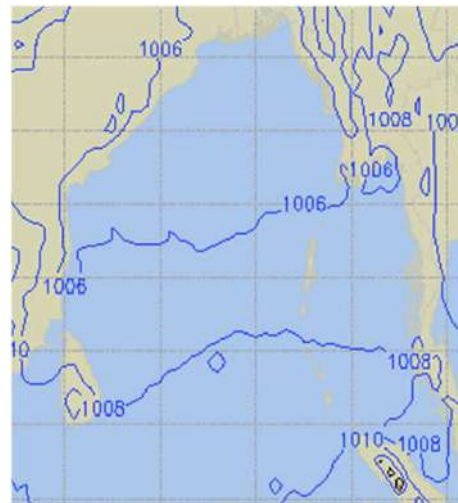
17 Sep 2024



18 Sep 2024



19 Sep 2024



20 Sep 2024

