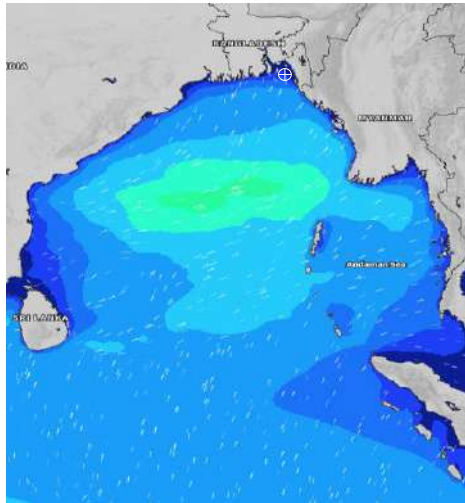


MARINE WEATHER FORECAST- NEAR AUTHORITY BUOY (Lat 22° 12' N, Long 091° 38' E)

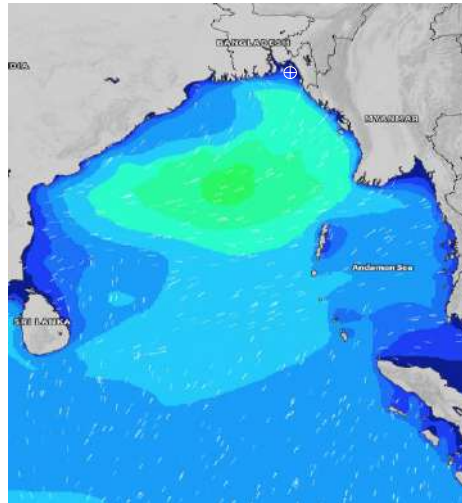
DATE : 14 to 21 July 2024

| Date | Time | Max Wind Spd (kts) | Wind Direction | Wave Ht (m) | Sea State | Baro Pressure | Air Temp | | Sea Surface Temp | Humidity (%) | Prb of Rain (%) | Sea State | Wave Ht (m) |
|----------|------|--------------------|----------------|-------------|-----------|---------------|----------|-----|------------------|--------------|-----------------|-----------|-------------|
| | | | | | | | Max | Min | | | | | |
| 14-07-24 | 0001 | 19 | SSE | 0.3 | 2 | 1000 | 32 | 27 | 27 | 88% | 12% (0.0 mm) | 0 | 0 |
| | 0600 | 18 | SE | 0.3 | 2 | 1000 | | | 27 | 85% | 14% (0.0 mm) | 1 | 0 - 0.1 |
| | 1200 | 11 | SW | 0.2 | 2 | 999 | | | 29 | 75% | 15% (0.0 mm) | 2 | 0.1 - 0.5 |
| | 1800 | 21 | S | 0.4 | 2 | 998 | | | 29 | 84% | 43% (0.2 mm) | 3 | 0.5 - 1.25 |
| 15-07-24 | 0001 | 24 | SSE | 0.2 | 2 | 1000 | 33 | 27 | 28 | 87% | 15% (0.0 mm) | 4 | 1.25 - 2.5 |
| | 0600 | 12 | ESE | 0.2 | 2 | 1001 | | | 27 | 88% | 11% (0.0 mm) | 5 | 2.5 - 4.0 |
| | 1200 | 17 | SSE | 0.2 | 2 | 1001 | | | 31 | 70% | 32% (0.0 mm) | 6 | 4.0 - 6.0 |
| | 1800 | 22 | S | 0.4 | 2 | 1001 | | | 28 | 81% | 20% (0.0 mm) | 7 | 6.0 - 9.0 |
| 16-07-24 | 0001 | 25 | SSE | 0.4 | 2 | 1003 | 32 | 27 | 28 | 86% | 12% (0.0 mm) | 8 | 9.0 - 14.0 |
| | 0600 | 21 | SE | 0.3 | 2 | 1003 | | | 27 | 88% | 14% (0.0 mm) | 9 | Over 14.0 |
| | 1200 | 15 | SSW | 0.3 | 2 | 1003 | | | 29 | 74% | 47% (0.3 mm) | | |
| | 1800 | 18 | SSW | 0.4 | 2 | 1001 | | | 28 | 83% | 24% (0.0 mm) | | |
| 17-07-24 | 0001 | 15 | SSE | 0.2 | 2 | 1003 | 32 | 27 | 28 | 90% | 23% (0.0 mm) | | |
| | 0600 | 15 | SSE | 0.3 | 2 | 1001 | | | 27 | 92% | 15% (0.0 mm) | | |
| | 1200 | 11 | SSW | 0.3 | 2 | 1001 | | | 28 | 76% | 30% (0.2 mm) | | |
| | 1800 | 10 | SSW | 0.2 | 2 | 1001 | | | 28 | 83% | 24% (0.0 mm) | | |

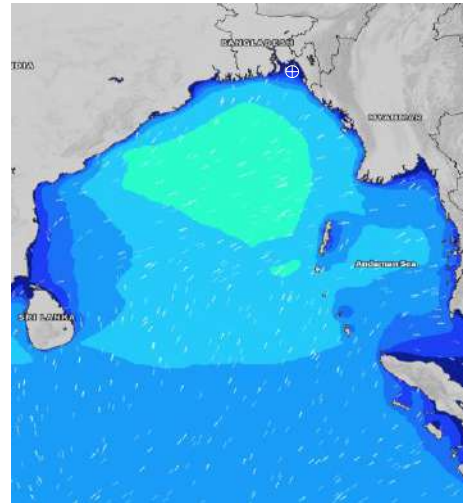
14 July 24 Sun (Probability 98%)



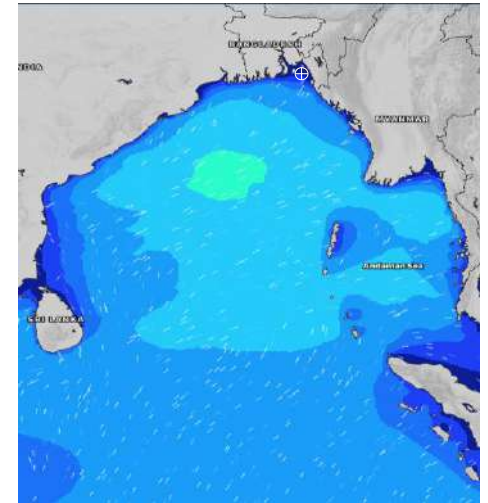
15 July 24 Mon (Probability 95%)



16 July 24 Tue Probability 90%



17 July 24 Wed (Probability 80%)



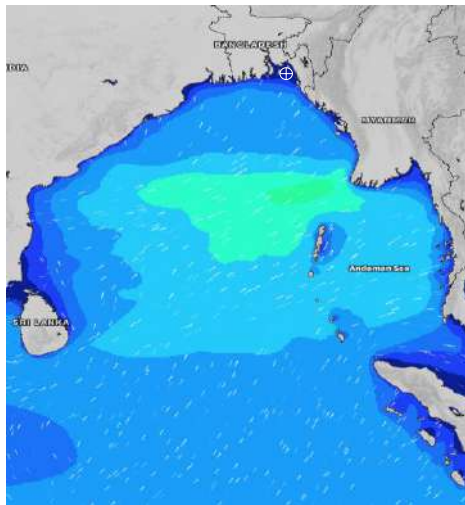
Significant wave height (m)

MARINE WEATHER FORECAST- NEAR AUTHORITY BUOY (Lat 22° 12' N, Long 091° 38' E)

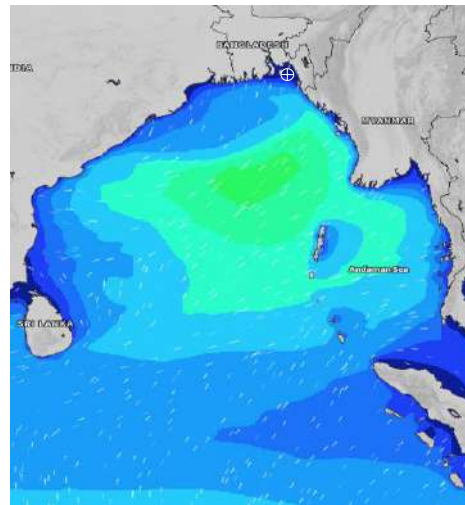
DATE : 14 to 21 July 2024

| Date | Time | Max Wind Spd (kts) | Wind Direction | Wave Ht (m) | Sea State | Baro Pressure | Air Temp | | Sea Surface Temp | Humidity (%) | Prob of Rain (%) | Sea State | Wave Ht (m) |
|----------|------|--------------------|----------------|-------------|-----------|---------------|----------|-----|------------------|--------------|------------------|-----------|-------------|
| | | | | | | | Max | Min | | | | | |
| 18-07-24 | 0001 | 10 | SSE | 0.2 | 2 | 1001 | 32 | 27 | 28 | 91% | 55% (0.4 mm) | 0 | 0 |
| | 0600 | 6 | SE | 0.1 | 1 | 1001 | | | 27 | 94% | 24% (0.0 mm) | 1 | 0 - 0.1 |
| | 1200 | 6 | WSW | 0.1 | 1 | 1000 | | | 28 | 77% | 52% (0.3 mm) | 2 | 0.1 - 0.5 |
| | 1800 | 11 | SW | 0.1 | 1 | 998 | | | 29 | 85% | 24% (0.0 mm) | 3 | 0.5 - 1.25 |
| 19-07-24 | 0001 | 10 | S | 0.2 | 2 | 1000 | 32 | 27 | 28 | 91% | 45% (0.3 mm) | 4 | 1.25 - 2.5 |
| | 0600 | 7 | ENE | 0.1 | 1 | 999 | | | 27 | 93% | 24% (0.1 mm) | 5 | 2.5 - 4.0 |
| | 1200 | 6 | S | 0.1 | 1 | 998 | | | 30 | 75% | 47% (0.3 mm) | 6 | 4.0 - 6.0 |
| | 1800 | 21 | SSE | 0.3 | 2 | 996 | | | 30 | 85% | 50% (0.4 mm) | 7 | 6.0 - 9.0 |
| 20-07-24 | 0001 | 28 | SE | 0.4 | 2 | 997 | 32 | 27 | 28 | 91% | 51% (0.6 mm) | 8 | 9.0 - 14.0 |
| | 0600 | 26 | SE | 0.4 | 2 | 997 | | | 28 | 93% | 45% (0.4 mm) | 9 | Over 14.0 |
| | 1200 | 24 | SSE | 0.4 | 2 | 998 | | | 29 | 77% | 34% (0.2 mm) | | |
| | 1800 | 25 | SSE | 0.4 | 2 | 998 | | | 29 | 86% | 33% (0.2 mm) | | |
| 21-07-24 | 0001 | 26 | SE | 0.5 | 2 | 999 | 31 | 27 | 28 | 90% | 39% (0.2 mm) | | |
| | 0600 | 24 | SSE | 0.5 | 2 | 999 | | | 28 | 91% | 30% (0.2 mm) | | |
| | 1200 | 26 | SSE | 0.5 | 2 | 999 | | | 29 | 74% | 64% (0.5 mm) | | |
| | 1800 | 25 | SSE | 0.5 | 2 | 998 | | | 28 | 84% | 51% (0.4 mm) | | |

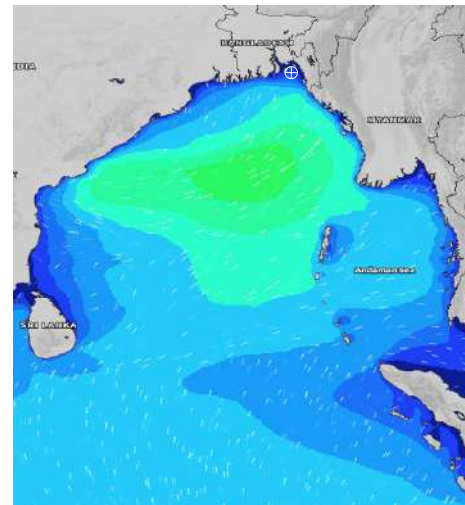
18 July 24 Thu (Probability 70%)



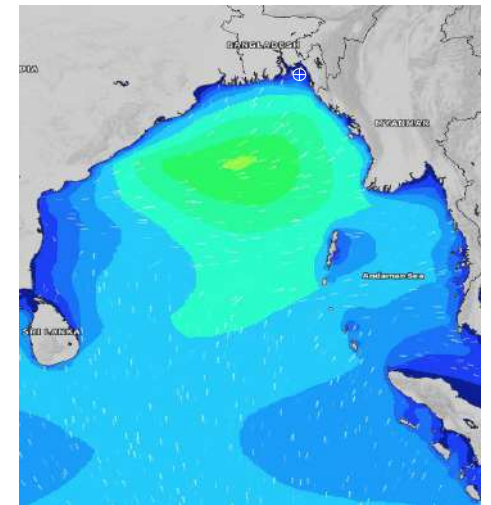
19 July 24 Fri (Probability 60%)



20 July 24 Sat (Probability 50%)



21 July 24 Sun (Probability 50%)



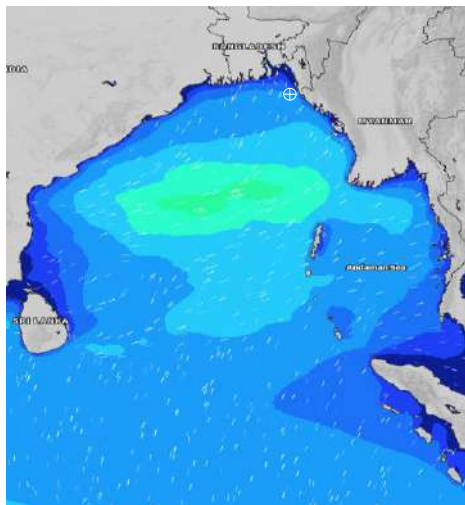
Significant wave height (m)

MARINE WEATHER FORECAST- 20 NM WEST OF ELEPHANT POINT (Lat 21° 10' N, Long 091° 42' E)

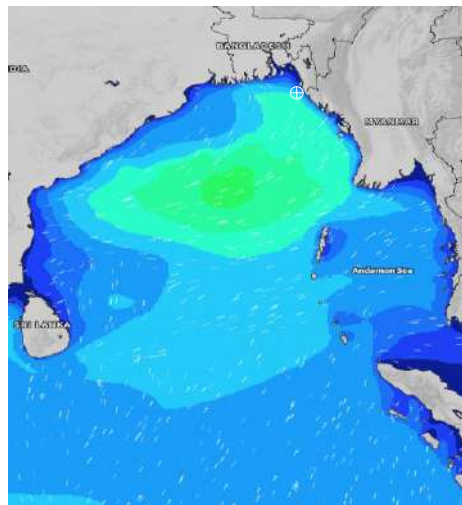
DATE : 14 to 21 July 2024

| Date | Time | Max Wind Spd (kts) | Wind Direction | Wave Ht (m) | Sea State | Baro Pressure | Air Temp | | Sea Surface Temp | Humidity (%) | Prob of Rain (%) | Sea State | Wave Ht (m) |
|----------|------|--------------------|----------------|-------------|-----------|---------------|----------|-----|------------------|--------------|------------------|-----------|-------------|
| | | | | | | | Max | Min | | | | | |
| 14-07-24 | 0001 | 16 | SSE | 1.5 | 4 | 1000 | 31 | 27 | 28 | 90% | 24% (0.0 mm) | 0 | 0 |
| | 0600 | 20 | SE | 1.6 | 4 | 999 | | | 28 | 89% | 14% (0.0 mm) | 1 | 0 - 0.1 |
| | 1200 | 23 | SSE | 1.8 | 4 | 999 | | | 28 | 79% | 80% (0.5 mm) | 2 | 0.1 - 0.5 |
| | 1800 | 26 | SE | 2.0 | 4 | 998 | | | 28 | 84% | 12% (0.0 mm) | 3 | 0.5 - 1.25 |
| 15-07-24 | 0001 | 29 | SE | 2.1 | 4 | 1000 | 31 | 26 | 28 | 87% | 17% (0.0 mm) | 4 | 1.25 - 2.5 |
| | 0600 | 28 | SE | 2.3 | 4 | 1001 | | | 28 | 88% | 20% (0.0 mm) | 5 | 2.5 - 4.0 |
| | 1200 | 29 | SE | 2.6 | 5 | 1001 | | | 28 | 76% | 40% (0.3 mm) | 6 | 4.0 - 6.0 |
| | 1800 | 26 | SE | 2.5 | 4 | 1001 | | | 28 | 84% | 24% (0.0 mm) | 7 | 6.0 - 9.0 |
| 16-07-24 | 0001 | 23 | SSE | 2.3 | 4 | 1003 | 30 | 27 | 28 | 89% | 41% (0.3 mm) | 8 | 9.0 - 14.0 |
| | 0600 | 19 | SE | 2.2 | 4 | 1003 | | | 28 | 90% | 40% (0.4 mm) | 9 | Over 14.0 |
| | 1200 | 16 | SSE | 2.1 | 4 | 1003 | | | 28 | 81% | 50% (0.4 mm) | | |
| | 1800 | 13 | SSE | 1.9 | 4 | 1001 | | | 29 | 86% | 24% (0.1 mm) | | |
| 17-07-24 | 0001 | 13 | SSE | 1.8 | 4 | 1003 | 31 | 26 | 28 | 90% | 34% (0.2 mm) | | |
| | 0600 | 12 | SE | 1.7 | 4 | 1001 | | | 28 | 92% | 17% (0.0 mm) | | |
| | 1200 | 12 | SSE | 1.6 | 4 | 1002 | | | 28 | 78% | 30% (0.2 mm) | | |
| | 1800 | 10 | S | 1.6 | 4 | 1000 | | | 28 | 85% | 24% (0.0 mm) | | |

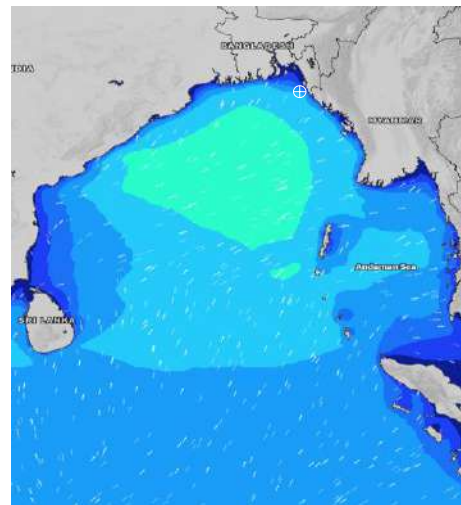
14 July 24 Sun (Probability 98%)



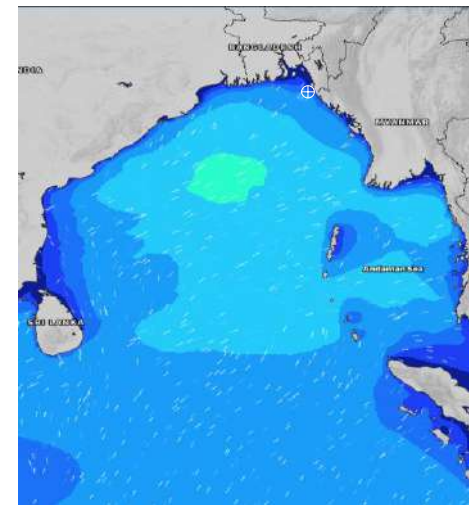
15 July 24 Mon (Probability 95%)



16 July 24 Tue Probability 90%



17 July 24 Wed (Probability 80%)



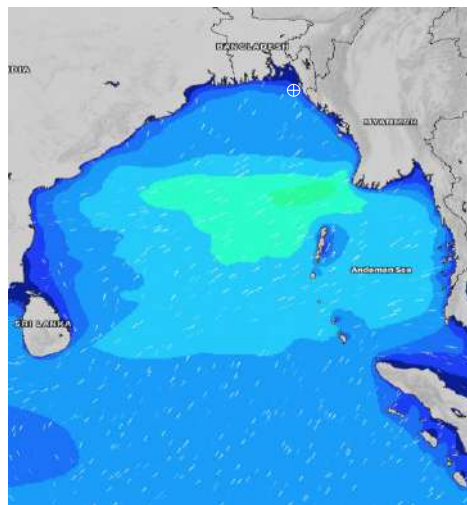
Significant wave height (m)

MARINE WEATHER FORECAST- 20 NM WEST OF ELEPHANT POINT (Lat 21° 10' N, Long 091° 42' E)

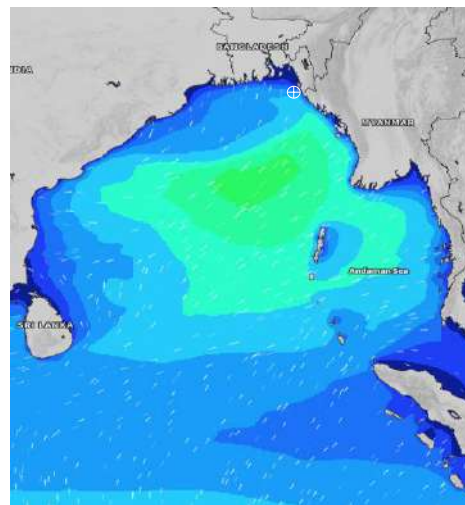
DATE : 14 to 21 July 2024

| Date | Time | Max Wind Spd (kts) | Wind Direction | Wave Ht (m) | Sea State | Baro Pressure | Air Temp | | Sea Surface Temp | Humidity (%) | Prob of Rain (%) | Sea State | Wave Ht (m) |
|----------|------|--------------------|----------------|-------------|-----------|---------------|----------|-----|------------------|--------------|------------------|-----------|-------------|
| | | | | | | | Max | Min | | | | | |
| 18-07-24 | 0001 | 9 | S | 1.5 | 4 | 1001 | 31 | 27 | 28 | 91% | 41% (0.3 mm) | 0 | 0 |
| | 0600 | 11 | SE | 1.5 | 4 | 1000 | | | 28 | 93% | 33% (0.2 mm) | 1 | 0 - 0.1 |
| | 1200 | 12 | SSE | 1.5 | 4 | 1000 | | | 28 | 76% | 49% (0.4 mm) | 2 | 0.1 - 0.5 |
| | 1800 | 17 | SSE | 1.5 | 4 | 998 | | | 28 | 85% | 35% (0.2 mm) | 3 | 0.5 - 1.25 |
| 19-07-24 | 0001 | 17 | SE | 1.4 | 4 | 999 | 31 | 26 | 28 | 90% | 37% (0.2 mm) | 4 | 1.25 - 2.5 |
| | 0600 | 14 | E | 1.4 | 4 | 999 | | | 28 | 91% | 24% (0.1 mm) | 5 | 2.5 - 4.0 |
| | 1200 | 29 | ESE | 1.9 | 4 | 998 | | | 29 | 77% | 47% (0.3 mm) | 6 | 4.0 - 6.0 |
| | 1800 | 30 | SE | 2.5 | 4 | 996 | | | 29 | 87% | 56% (0.4 mm) | 7 | 6.0 - 9.0 |
| 20-07-24 | 0001 | 28 | SE | 2.6 | 5 | 997 | 31 | 26 | 28 | 90% | 60% (0.6 mm) | 8 | 9.0 - 14.0 |
| | 0600 | 22 | SSE | 2.5 | 4 | 997 | | | 28 | 91% | 45% (0.4 mm) | 9 | Over 14.0 |
| | 1200 | 25 | SSE | 2.5 | 4 | 998 | | | 28 | 80% | 72% (0.7 mm) | | |
| | 1800 | 25 | SSE | 2.5 | 4 | 997 | | | 28 | 87% | 67% (0.5 mm) | | |
| 21-07-24 | 0001 | 24 | S | 2.5 | 4 | 999 | 29 | 26 | 28 | 90% | 56% (0.4 mm) | | |
| | 0600 | 25 | S | 2.6 | 5 | 999 | | | 28 | 92% | 60% (0.6 mm) | | |
| | 1200 | 27 | SSE | 2.6 | 5 | 999 | | | 28 | 87% | 45% (0.4 mm) | | |
| | 1800 | 21 | SSE | 2.5 | 4 | 998 | | | 28 | 90% | 60% (0.7 mm) | | |

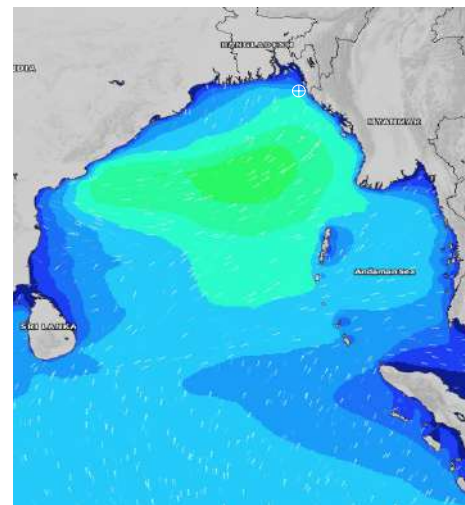
18 July 24 Thu (Probability 70%)



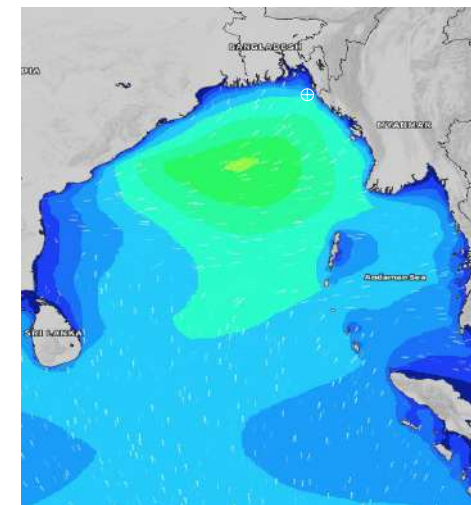
19 July 24 Fri (Probability 60%)



20 July 24 Sat (Probability 50%)



21 July 24 Sun (Probability 50%)



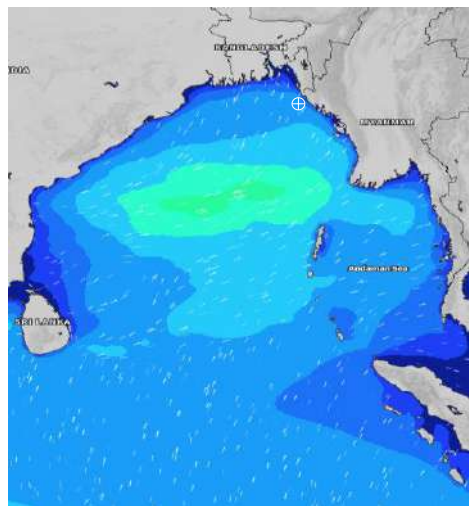
Significant wave height (m)

MARINE WEATHER FORECAST- 15 NM WEST OF ST. MARTIN'S LIGHT HOUSE (Lat 20° 37'N, Long 092° 03'E)

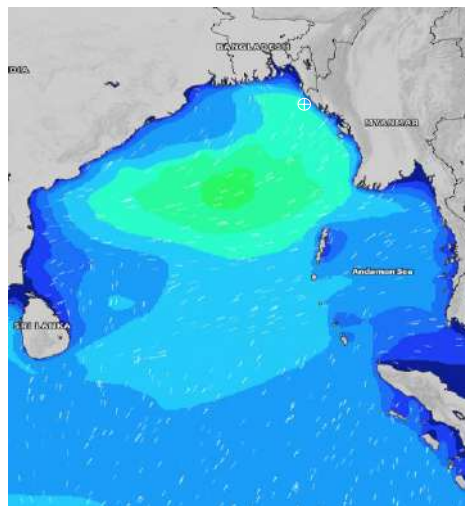
DATE : 14 to 21 July 2024

| Date | Time | Max Wind Spd (kts) | Wind Direction | Wave Ht (m) | Sea State | Baro Pressure | Air Temp | | Sea Surface Temp | Humidity (%) | Prob of Rain(%) | Sea State | Wave Ht (m) |
|----------|------|--------------------|----------------|-------------|-----------|---------------|----------|-----|------------------|--------------|-----------------|-----------|-------------|
| | | | | | | | Max | Min | | | | | |
| 14-07-24 | 0001 | 14 | S | 1.9 | 4 | 1001 | 30 | 26 | 28 | 90% | 45% (0.2 mm) | 0 | 0 |
| | 0600 | 13 | SE | 1.9 | 4 | 999 | | | 28 | 91% | 47% (0.2 mm) | 1 | 0 - 0.1 |
| | 1200 | 18 | SE | 2.2 | 4 | 1000 | | | 28 | 85% | 80% (2.1 mm) | 2 | 0.1 - 0.5 |
| | 1800 | 24 | SE | 2.3 | 4 | 998 | | | 28 | 88% | 34% (0.1 mm) | 3 | 0.5 - 1.25 |
| 15-07-24 | 0001 | 27 | SE | 2.6 | 5 | 1000 | 30 | 26 | 28 | 90% | 64% (0.6 mm) | 4 | 1.25 - 2.5 |
| | 0600 | 27 | SSE | 2.8 | 5 | 1000 | | | 28 | 92% | 54% (0.4 mm) | 5 | 2.5 - 4.0 |
| | 1200 | 28 | SE | 3.2 | 5 | 1002 | | | 28 | 85% | 57% (0.4 mm) | 6 | 4.0 - 6.0 |
| | 1800 | 23 | SSE | 3.0 | 5 | 1001 | | | 28 | 89% | 75% (0.6 mm) | 7 | 6.0 - 9.0 |
| 16-07-24 | 0001 | 20 | SSE | 2.8 | 5 | 1004 | 29 | 27 | 28 | 92% | 54% (0.4 mm) | 8 | 9.0 - 14.0 |
| | 0600 | 14 | SSE | 2.9 | 5 | 1002 | | | 28 | 93% | 57% (0.4 mm) | 9 | Over 14.0 |
| | 1200 | 13 | SSE | 2.7 | 5 | 1004 | | | 28 | 86% | 61% (0.5 mm) | | |
| | 1800 | 9 | S | 2.5 | 4 | 1001 | | | 28 | 88% | 64% (0.6 mm) | | |
| 17-07-24 | 0001 | 10 | S | 2.3 | 4 | 1003 | 30 | 27 | 28 | 90% | 53% (0.4 mm) | | |
| | 0600 | 7 | SSE | 2.2 | 4 | 1001 | | | 28 | 93% | 24% (0.1 mm) | | |
| | 1200 | 8 | S | 2.1 | 4 | 1002 | | | 28 | 81% | 34% (0.2 mm) | | |
| | 1800 | 8 | SSW | 2.0 | 4 | 999 | | | 28 | 87% | 34% (0.2 mm) | | |

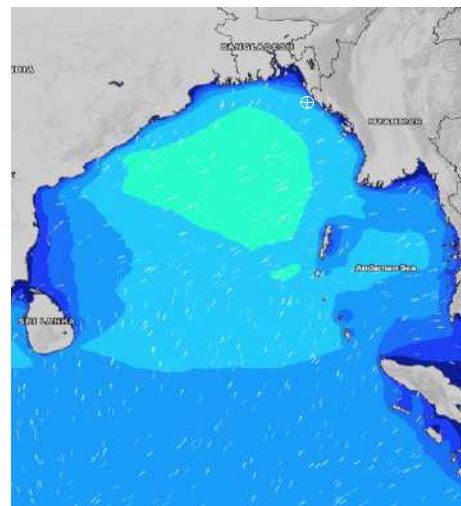
14 July 24 Sun (Probability 98%)



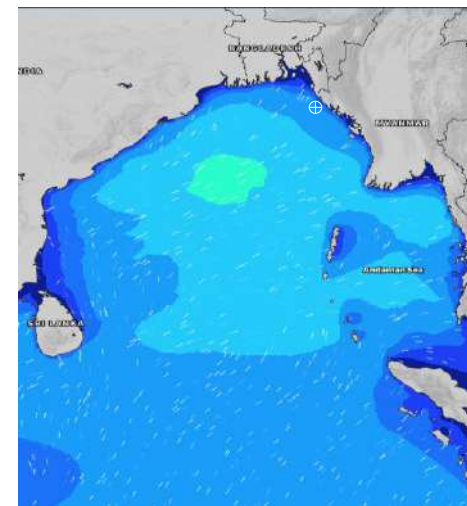
15 July 24 Mon (Probability 95%)



16 July 24 Tue Probability 90%



17 July 24 Wed (Probability 80%)



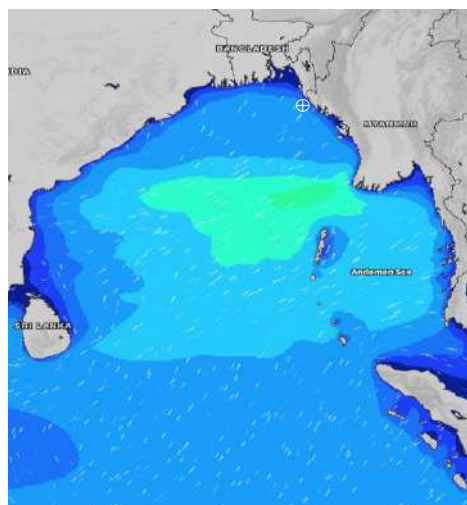
Significant wave height (m)

MARINE WEATHER FORECAST- 15 NM WEST OF ST. MARTIN'S LIGHT HOUSE (Lat 20° 37'N, Long 092° 03'E)

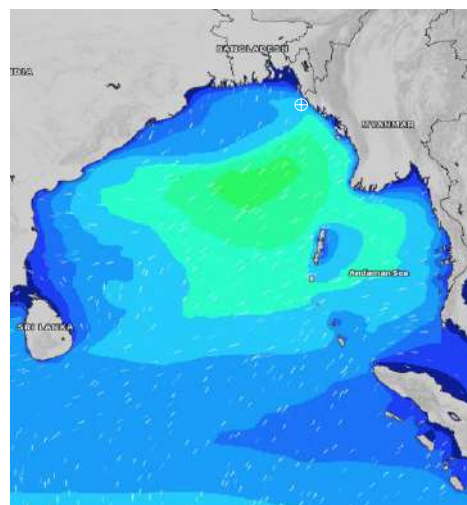
DATE : 14 to 21 July 2024

| Date | Time | Max Wind Spd (kts) | Wind Direction | Wave Ht (m) | Sea State | Baro Pressure | Air Temp | | Sea Surface Temp | Humidity (%) | Prob of Rain (%) | Sea State | Wave Ht (m) |
|----------|------|--------------------|----------------|-------------|-----------|---------------|----------|-----|------------------|--------------|------------------|-----------|-------------|
| | | | | | | | Max | Min | | | | | |
| 18-07-24 | 0001 | 9 | SSE | 2.0 | 4 | 1002 | 31 | 26 | 28 | 90% | 43% (0.2 mm) | 0 | 0 |
| | 0600 | 11 | SE | 2.0 | 4 | 1000 | | | 28 | 92% | 39% (0.2 mm) | 1 | 0 - 0.1 |
| | 1200 | 15 | SE | 1.9 | 4 | 1001 | | | 28 | 81% | 41% (0.3 mm) | 2 | 0.1 - 0.5 |
| | 1800 | 15 | SE | 1.8 | 4 | 998 | | | 28 | 86% | 37% (0.2 mm) | 3 | 0.5 - 1.25 |
| 19-07-24 | 0001 | 19 | SE | 1.8 | 4 | 1000 | 30 | 26 | 29 | 90% | 43% (0.2 mm) | 4 | 1.25 - 2.5 |
| | 0600 | 28 | E | 2.2 | 4 | 997 | | | 28 | 91% | 39% (0.2 mm) | 5 | 2.5 - 4.0 |
| | 1200 | 26 | ESE | 2.6 | 5 | 999 | | | 28 | 83% | 52% (0.4 mm) | 6 | 4.0 - 6.0 |
| | 1800 | 25 | SE | 3.1 | 5 | 996 | | | 28 | 87% | 68% (0.5 mm) | 7 | 6.0 - 9.0 |
| 20-07-24 | 0001 | 26 | SSE | 3.2 | 5 | 998 | 29 | 26 | 28 | 90% | 64% (0.6 mm) | 8 | 9.0 - 14.0 |
| | 0600 | 23 | S | 3.4 | 5 | 997 | | | 28 | 91% | 75% (0.7 mm) | 9 | Over 14.0 |
| | 1200 | 24 | S | 3.2 | 5 | 999 | | | 28 | 86% | 43% (0.1 mm) | | |
| | 1800 | 26 | S | 3.2 | 5 | 997 | | | 28 | 90% | 34% (0.2 mm) | | |
| 21-07-24 | 0001 | 25 | S | 3.4 | 5 | 1000 | 29 | 26 | 28 | 91% | 64% (0.6 mm) | | |
| | 0600 | 26 | SSW | 3.4 | 5 | 999 | | | 28 | 93% | 75% (0.7 mm) | | |
| | 1200 | 27 | S | 3.3 | 5 | 1001 | | | 28 | 90% | 43% (0.1 mm) | | |
| | 1800 | 25 | S | 3.3 | 5 | 998 | | | 28 | 90% | 34% (0.2 mm) | | |

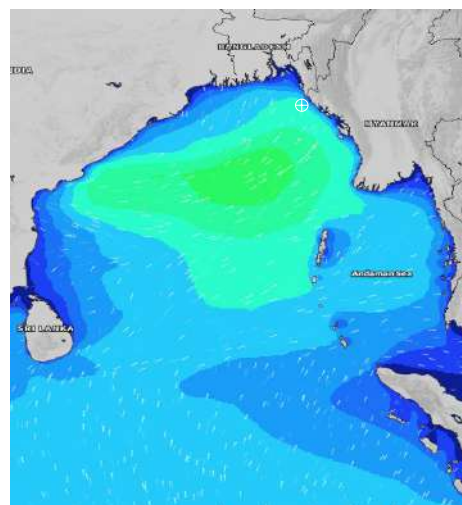
18 July 24 Thu (Probability 70%)



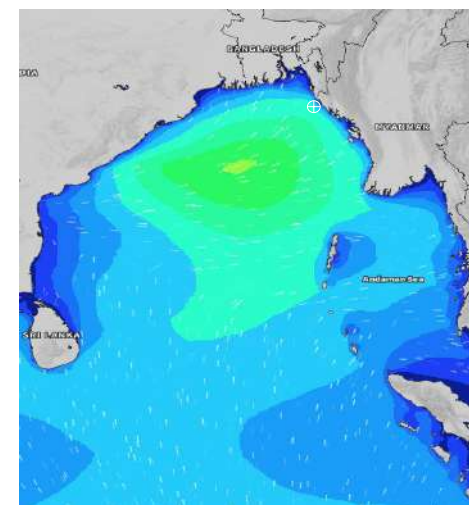
19 July 24 Fri (Probability 60%)



20 July 24 Sat (Probability 50%)



21 July 24 Sun (Probability 50%)



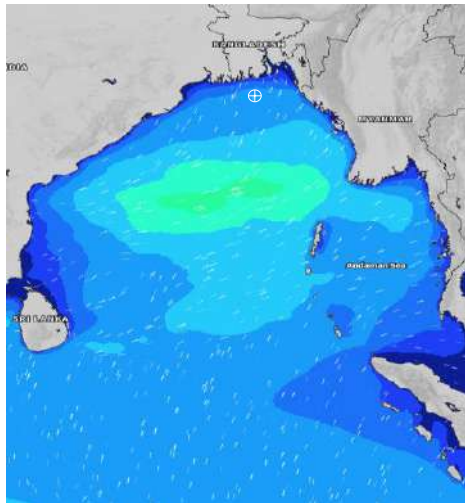
Significant wave height (m)

MARINE WEATHER FORECAST- 40 NM ESE OF PAYRA FAIRWAY (Lat 21° 07' N, Long 090° 45' E)

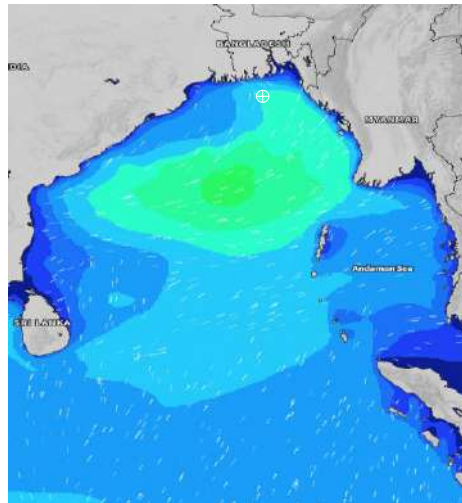
DATE : 14 to 21 July 2024

| Date | Time | Max Wind Spd (kts) | Wind Direction | Wave Ht (m) | Sea State | Baro Pressure | Air Temp | | Sea Surface Temp | Humidity (%) | Prob of Rain (%) | Sea State | Wave Ht (m) |
|----------|------|--------------------|----------------|-------------|-----------|---------------|----------|-----|------------------|--------------|------------------|-----------|-------------|
| | | | | | | | Max | Min | | | | | |
| 14-07-24 | 0001 | 11 | S | 1.8 | 4 | 999 | 31 | 28 | 28 | 90% | 24% (0.0 mm) | 0 | 0 |
| | 0600 | 11 | SSE | 1.9 | 4 | 999 | | | 28 | 87% | 17% (0.0 mm) | 1 | 0 - 0.1 |
| | 1200 | 16 | SE | 2.0 | 4 | 999 | | | 29 | 84% | 52% (0.3 mm) | 2 | 0.1 - 0.5 |
| | 1800 | 22 | SE | 2.2 | 4 | 997 | | | 29 | 84% | 14% (0.0 mm) | 3 | 0.5 - 1.25 |
| 15-07-24 | 0001 | 24 | SE | 2.5 | 4 | 999 | 31 | 28 | 29 | 87% | 24% (0.0 mm) | 4 | 1.25 - 2.5 |
| | 0600 | 23 | SE | 2.7 | 5 | 999 | | | 28 | 90% | 32% (0.2 mm) | 5 | 2.5 - 4.0 |
| | 1200 | 29 | SE | 3.3 | 5 | 1000 | | | 28 | 82% | 41% (0.3 mm) | 6 | 4.0 - 6.0 |
| | 1800 | 26 | SE | 3.1 | 5 | 999 | | | 29 | 83% | 18% (0.0 mm) | 7 | 6.0 - 9.0 |
| 16-07-24 | 0001 | 24 | SSE | 3.1 | 5 | 1002 | 31 | 28 | 29 | 88% | 43% (0.2 mm) | 8 | 9.0 - 14.0 |
| | 0600 | 17 | SSE | 3.1 | 5 | 1002 | | | 29 | 89% | 49% (0.4 mm) | 9 | Over 14.0 |
| | 1200 | 14 | S | 2.9 | 5 | 1002 | | | 28 | 83% | 41% (0.2 mm) | | |
| | 1800 | 14 | S | 2.7 | 5 | 1000 | | | 29 | 85% | 10% (0.0 mm) | | |
| 17-07-24 | 0001 | 12 | S | 2.5 | 4 | 1002 | 31 | 28 | 28 | 87% | 38% (0.2 mm) | | |
| | 0600 | 9 | S | 2.3 | 4 | 1001 | | | 28 | 91% | 24% (0.0 mm) | | |
| | 1200 | 10 | S | 2.2 | 4 | 1001 | | | 29 | 79% | 23% (0.0 mm) | | |
| | 1800 | 11 | S | 2.1 | 4 | 999 | | | 29 | 82% | 10% (0.0 mm) | | |

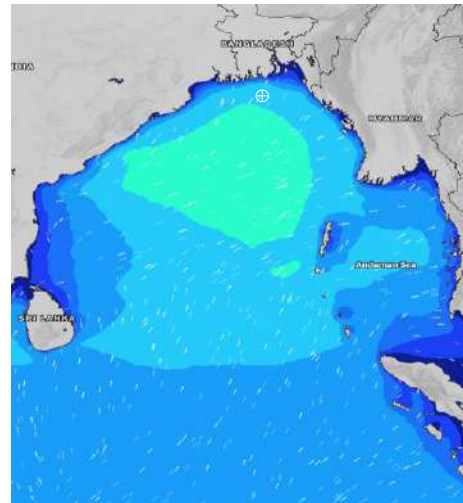
14 July 24 Sun (Probability 98%)



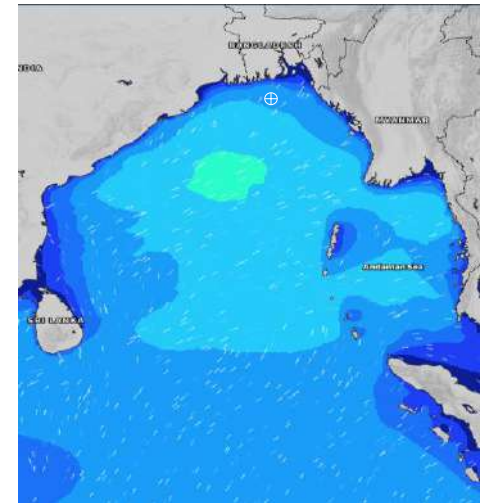
15 July 24 Mon (Probability 95%)



16 July 24 Tue Probability 90%



17 July 24 Wed (Probability 80%)



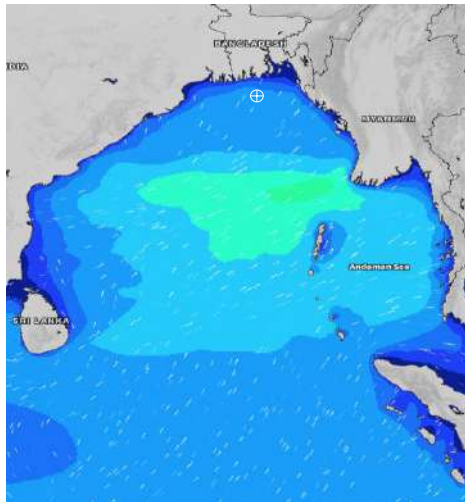
Significant wave height (m)

MARINE WEATHER FORECAST- 40 NM ESE OF PAYRA FAIRWAY (Lat 21° 07' N, Long 090° 45' E)

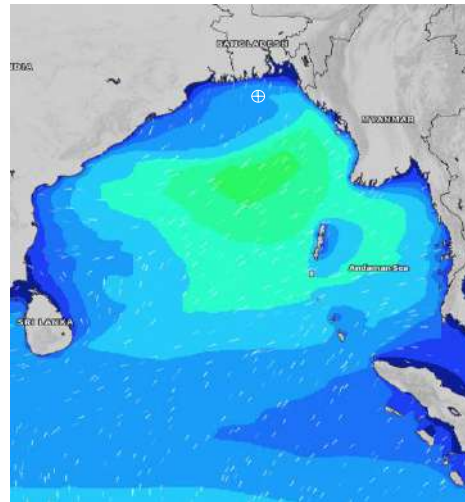
DATE : 14 to 21 July 2024

| Date | Time | Max Wind Spd (kts) | Wind Direction | Wave Ht (m) | Sea State | Baro Pressure | Air Temp | | Sea Surface Temp | Humidity (%) | Prob of Rain (%) | Sea State | Wave Ht (m) |
|----------|------|--------------------|----------------|-------------|-----------|---------------|----------|-----|------------------|--------------|------------------|-----------|-------------|
| | | | | | | | Max | Min | | | | | |
| 18-07-24 | 0001 | 10 | SSE | 2.1 | 4 | 1001 | 31 | 28 | 28 | 89% | 20% (0.0 mm) | 0 | 0 |
| | 0600 | 12 | ESE | 2.0 | 4 | 1000 | | | 28 | 90% | 35% (0.2 mm) | 1 | 0 - 0.1 |
| | 1200 | 15 | SE | 2.0 | 4 | 1000 | | | 29 | 79% | 32% (0.2 mm) | 2 | 0.1 - 0.5 |
| | 1800 | 14 | SE | 1.9 | 4 | 998 | | | 29 | 83% | 14% (0.0 mm) | 3 | 0.5 - 1.25 |
| 19-07-24 | 0001 | 14 | ESE | 1.8 | 4 | 999 | 31 | 28 | 28 | 87% | 36% (0.2 mm) | 4 | 1.25 - 2.5 |
| | 0600 | 24 | E | 1.9 | 4 | 998 | | | 29 | 90% | 32% (0.2 mm) | 5 | 2.5 - 4.0 |
| | 1200 | 25 | E | 2.4 | 4 | 997 | | | 28 | 80% | 24% (0.0 mm) | 6 | 4.0 - 6.0 |
| | 1800 | 14 | SE | 2.5 | 4 | 994 | | | 29 | 83% | 23% (0.0 mm) | 7 | 6.0 - 9.0 |
| 20-07-24 | 0001 | 13 | SSE | 2.6 | 5 | 996 | 31 | 28 | 29 | 88% | 55% (0.4 mm) | 8 | 9.0 - 14.0 |
| | 0600 | 13 | S | 2.9 | 5 | 996 | | | 29 | 90% | 44% (0.4 mm) | 9 | Over 14.0 |
| | 1200 | 21 | SSE | 3.0 | 5 | 997 | | | 29 | 83% | 43% (0.4 mm) | | |
| | 1800 | 20 | S | 3.0 | 5 | 995 | | | 29 | 86% | 24% (0.1 mm) | | |
| 21-07-24 | 0001 | 24 | S | 3.2 | 5 | 997 | 30 | 27 | 28 | 88% | 61% (0.6 mm) | | |
| | 0600 | 24 | S | 3.3 | 5 | 997 | | | 28 | 90% | 44% (0.4 mm) | | |
| | 1200 | 21 | SSW | 3.2 | 5 | 998 | | | 28 | 86% | 43% (0.4 mm) | | |
| | 1800 | 19 | SSW | 3.3 | 5 | 997 | | | 28 | 87% | 24% (0.1 mm) | | |

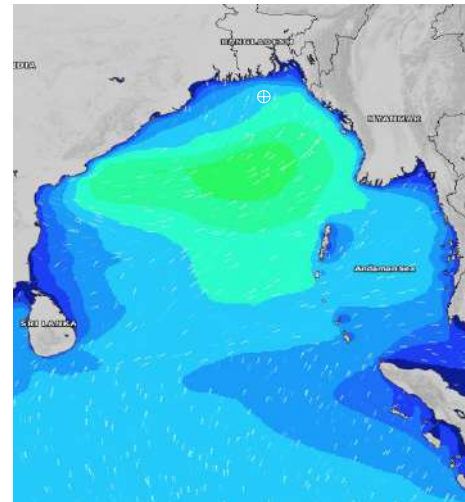
18 July 24 Thu (Probability 70%)



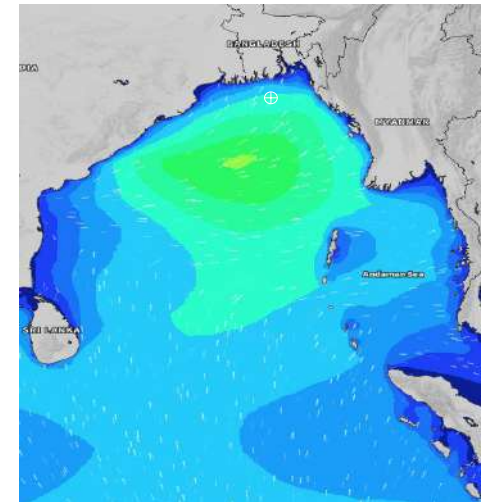
19 July 24 Fri (Probability 60%)



20 July 24 Sat (Probability 50%)



21 July 24 Sun (Probability 50%)



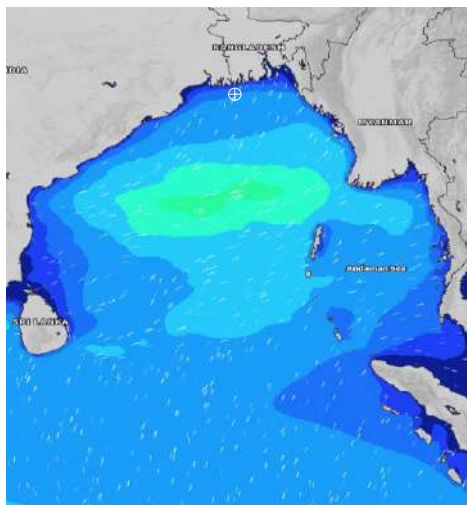
Significant wave height (m)

MARINE WEATHER FORECAST- 10 NM SOUTH OF MONGLA FAIRWAY (Lat 21° 16' N, Long 089° 34' E)

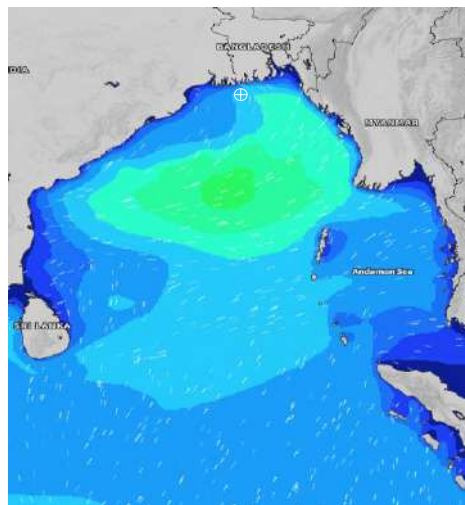
DATE : 14 to 21 July 2024

| Date | Time | Max Wind Spd (kts) | Wind Direction | Wave Ht (m) | Sea State | Baro Pressure | Air Temp | | Sea Surface Temp | Humidity (%) | Prob of Rain (%) | Sea State | Wave Ht (m) |
|----------|------|--------------------|----------------|-------------|-----------|---------------|----------|-----|------------------|--------------|------------------|-----------|-------------|
| | | | | | | | Max | Min | | | | | |
| 14-07-24 | 0001 | 9 | SSE | 1.7 | 4 | 999 | 32 | 27 | 28 | 92% | 24% (0.0 mm) | 0 | 0 |
| | 0600 | 9 | SE | 1.8 | 4 | 998 | | | 28 | 87% | 14% (0.0 mm) | 1 | 0 - 0.1 |
| | 1200 | 13 | ESE | 1.8 | 4 | 998 | | | 29 | 77% | 88% (0.6 mm) | 2 | 0.1 - 0.5 |
| | 1800 | 16 | ESE | 1.9 | 4 | 996 | | | 29 | 80% | 10% (0.0 mm) | 3 | 0.5 - 1.25 |
| 15-07-24 | 0001 | 20 | ESE | 2.2 | 4 | 998 | 32 | 27 | 29 | 90% | 12% (0.0 mm) | 4 | 1.25 - 2.5 |
| | 0600 | 22 | E | 2.4 | 4 | 998 | | | 28 | 91% | 34% (0.2 mm) | 5 | 2.5 - 4.0 |
| | 1200 | 30 | ESE | 2.9 | 5 | 998 | | | 29 | 77% | 46% (0.3 mm) | 6 | 4.0 - 6.0 |
| | 1800 | 27 | SE | 2.9 | 5 | 998 | | | 29 | 81% | 11% (0.0 mm) | 7 | 6.0 - 9.0 |
| 16-07-24 | 0001 | 25 | SSE | 3.0 | 5 | 1000 | 32 | 27 | 29 | 87% | 23% (0.0 mm) | 8 | 9.0 - 14.0 |
| | 0600 | 20 | SSE | 3.1 | 5 | 1000 | | | 29 | 92% | 38% (0.2 mm) | 9 | Over 14.0 |
| | 1200 | 17 | SSE | 2.9 | 5 | 1001 | | | 29 | 77% | 44% (0.3 mm) | | |
| | 1800 | 14 | S | 2.6 | 5 | 999 | | | 29 | 81% | 14% (0.0 mm) | | |
| 17-07-24 | 0001 | 14 | S | 2.4 | 4 | 1001 | 33 | 27 | 29 | 89% | 12% (0.0 mm) | | |
| | 0600 | 10 | S | 2.3 | 4 | 1000 | | | 28 | 92% | 24% (0.0 mm) | | |
| | 1200 | 10 | SSE | 2.2 | 4 | 1001 | | | 29 | 75% | 36% (0.2 mm) | | |
| | 1800 | 11 | SSE | 2.1 | 4 | 999 | | | 29 | 76% | 10% (0.0 mm) | | |

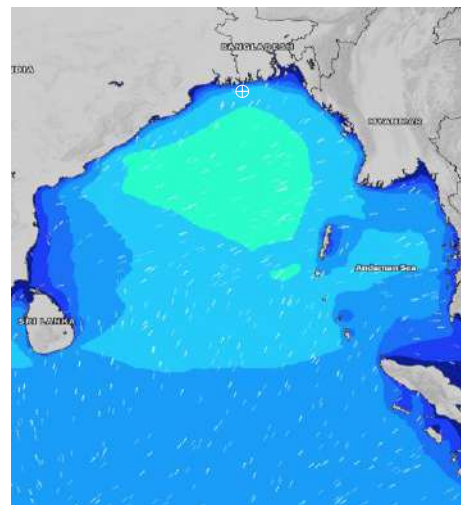
14 July 24 Sun (Probability 98%)



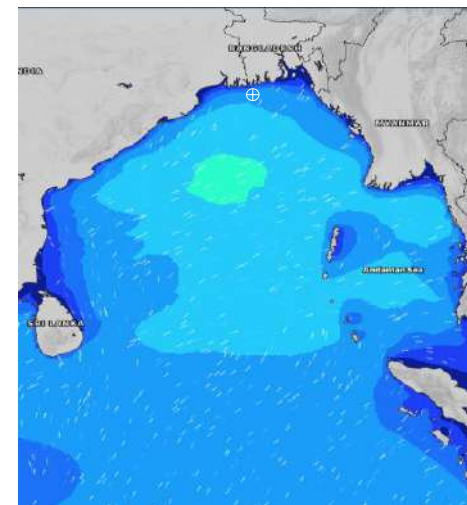
15 July 24 Mon (Probability 95%)



16 July 24 Tue Probability 90%



17 July 24 Wed (Probability 80%)



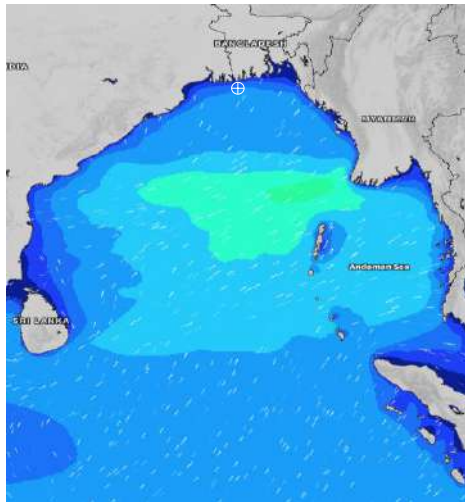
Significant wave height (m)

MARINE WEATHER FORECAST- 10 NM SOUTH OF MONGLA FAIRWAY (Lat 21° 16' N, Long 089° 34' E)

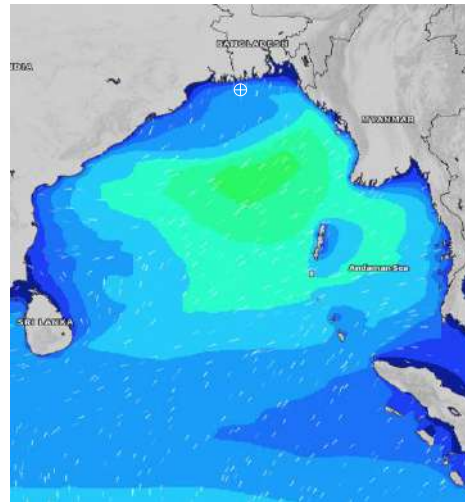
DATE : 14 to 21 July 2024

| Date | Time | Max Wind Spd (kts) | Wind Direction | Wave Ht (m) | Sea State | Baro Pressure | Air Temp | | Sea Surface Temp | Humidity (%) | Prob of Rain (%) | Sea State | Wave Ht (m) |
|----------|------|--------------------|----------------|-------------|-----------|---------------|----------|-----|------------------|--------------|------------------|-----------|-------------|
| | | | | | | | Max | Min | | | | | |
| 18-07-24 | 0001 | 11 | SSE | 2.0 | 4 | 1000 | 33 | 27 | 29 | 90% | 11% (0.0 mm) | 0 | 0 |
| | 0600 | 11 | ESE | 1.9 | 4 | 999 | | | 29 | 92% | 24% (0.0 mm) | 1 | 0 - 0.1 |
| | 1200 | 12 | ESE | 1.9 | 4 | 1000 | | | 29 | 71% | 32% (0.2 mm) | 2 | 0.1 - 0.5 |
| | 1800 | 12 | ESE | 1.8 | 4 | 998 | | | 29 | 76% | 10% (0.0 mm) | 3 | 0.5 - 1.25 |
| 19-07-24 | 0001 | 10 | SE | 1.7 | 4 | 999 | 33 | 27 | 29 | 89% | 24% (0.0 mm) | 4 | 1.25 - 2.5 |
| | 0600 | 14 | E | 1.7 | 4 | 998 | | | 29 | 90% | 35% (0.2 mm) | 5 | 2.5 - 4.0 |
| | 1200 | 28 | E | 2.1 | 4 | 997 | | | 29 | 73% | 36% (0.2 mm) | 6 | 4.0 - 6.0 |
| | 1800 | 11 | ENE | 2.1 | 4 | 993 | | | 29 | 75% | 12% (0.0 mm) | 7 | 6.0 - 9.0 |
| 20-07-24 | 0001 | 13 | SSE | 2.2 | 4 | 996 | 32 | 27 | 29 | 88% | 45% (0.7 mm) | 8 | 9.0 - 14.0 |
| | 0600 | 10 | SSE | 2.5 | 4 | 995 | | | 29 | 91% | 32% (0.4 mm) | 9 | Over 14.0 |
| | 1200 | 10 | SSE | 2.5 | 4 | 996 | | | 29 | 77% | 52% (0.4 mm) | | |
| | 1800 | 10 | S | 2.5 | 4 | 995 | | | 29 | 81% | 24% (0.0 mm) | | |
| 21-07-24 | 0001 | 19 | S | 2.6 | 5 | 996 | 32 | 27 | 29 | 90% | 43% (0.2 mm) | | |
| | 0600 | 19 | S | 2.8 | 5 | 996 | | | 29 | 92% | 57% (0.4 mm) | | |
| | 1200 | 14 | S | 2.8 | 5 | 997 | | | 29 | 80% | 63% (0.5 mm) | | |
| | 1800 | 15 | SSW | 2.9 | 5 | 995 | | | 29 | 84% | 24% (0.0 mm) | | |

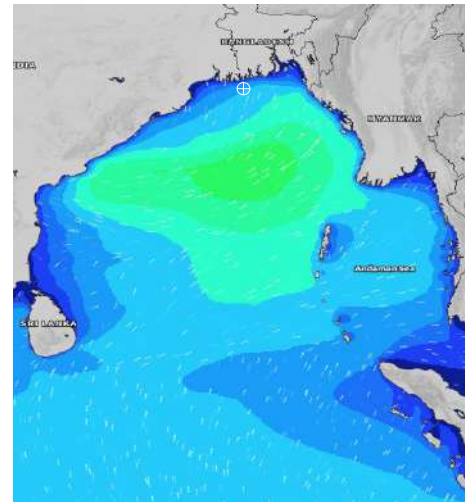
18 July 24 Thu (Probability 70%)



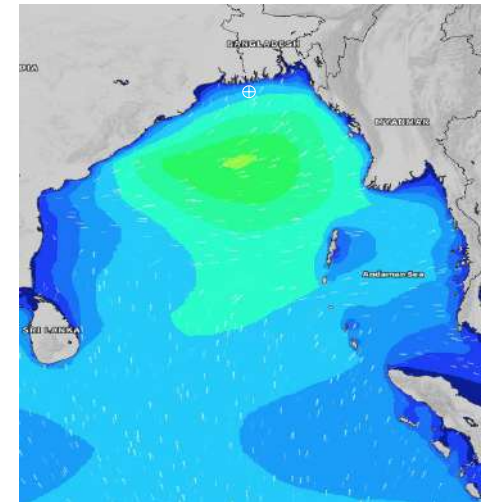
19 July 24 Fri (Probability 60%)



20 July 24 Sat (Probability 50%)



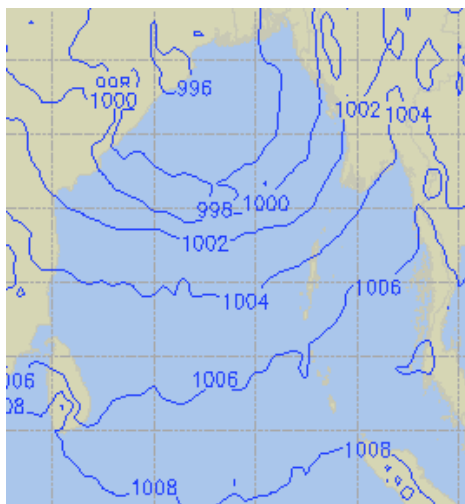
21 July 24 Sun (Probability 50%)



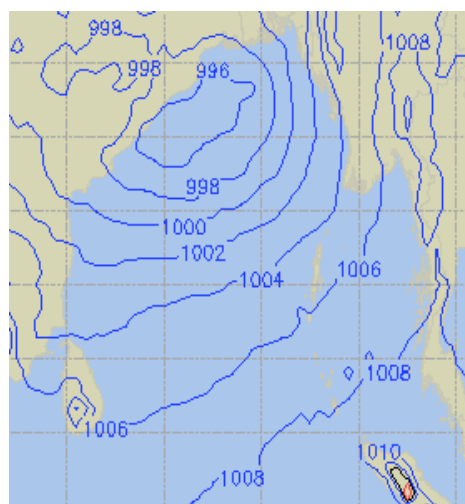
Significant wave height (m)

PREDICTED SURFACE PRESSURE FORECAST (14 to 20 July 2024)

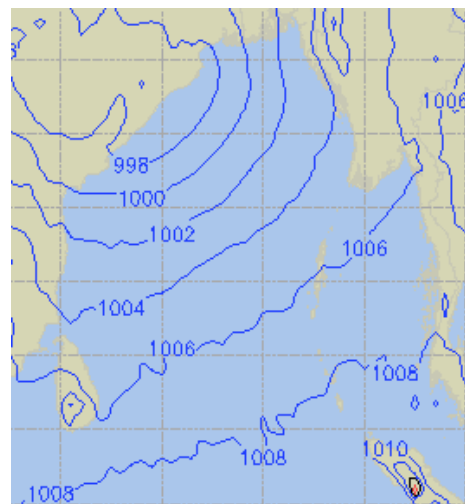
14 July 24 Sun (Probability 98%)



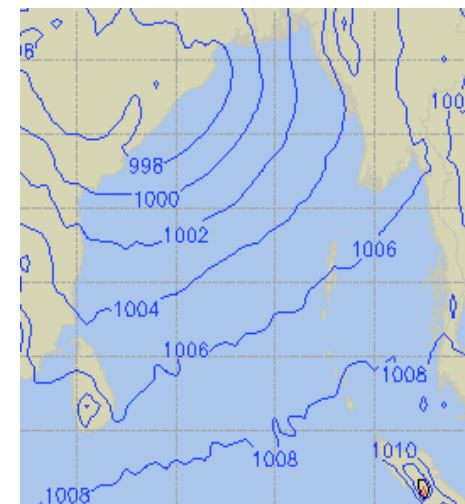
15 July 24 Mon (Probability 95%)



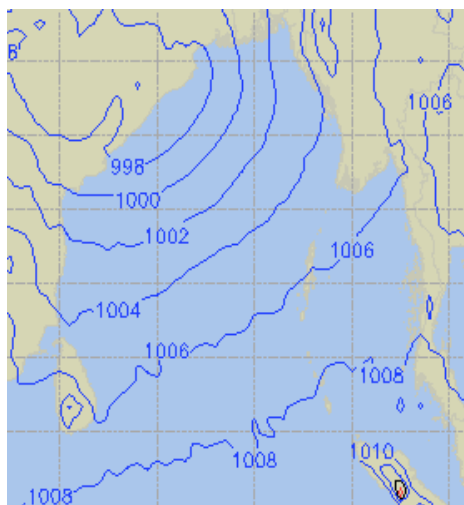
16 July 24 Tue (Probability 90%)



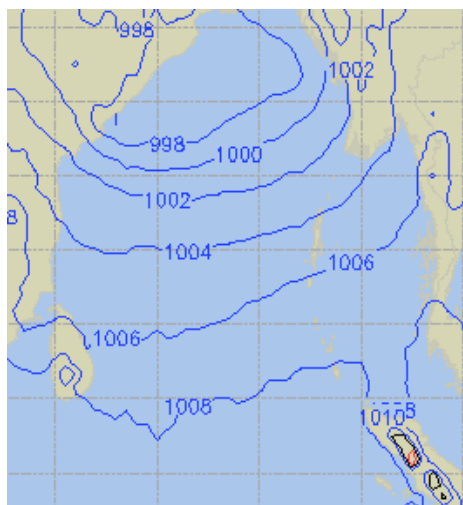
17 July 24 Wed (Probability 80%)



18 July 24 Thu (Probability 70%)



19 July 24 Fri (Probability 60%)



20 July 24 Sat (Probability 50%)

