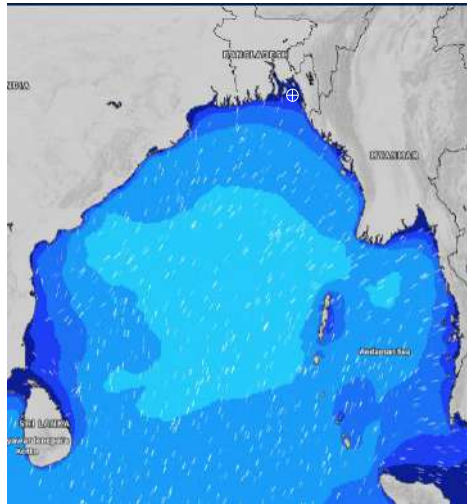


MARINE WEATHER FORECAST- NEAR AUTHORITY BUOY (Lat 22° 12' N, Long 091° 38' E)

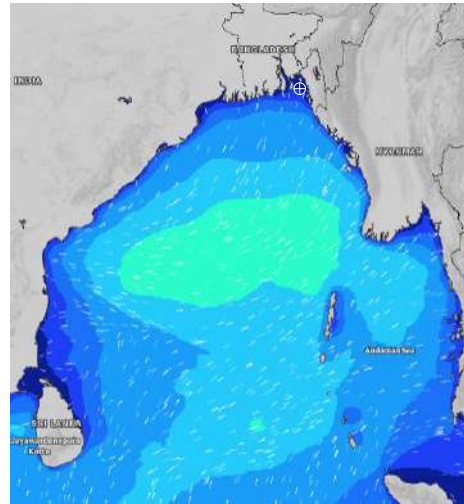
DATE : 13 to 20 July 2024

Date	Time	Max Wind Spd (kts)	Wind Direction	Wave Ht (m)	Sea State	Baro Pressure	Air Temp		Sea Surface Temp	Humidity (%)	Prb of Rain (%)	Sea State	Wave Ht (m)
							Max	Min					
13-07-24	0001	20	SSE	0.4	2	1002	30	26	27	91%	24% (0.1mm)	0	0
	0600	17	SSE	0.3	2	1001			27	86%	94% (0.8 mm)	1	0 - 0.1
	1200	16	S	0.4	2	1001			28	86%	96% (2.1 mm)	2	0.1 - 0.5
	1800	15	S	0.3	2	999			28	88%	38% (0.2 mm)	3	0.5 - 1.25
14-07-24	0001	17	SSE	0.3	2	1000	32	27	27	92%	24% (0.0 mm)	4	1.25 - 2.5
	0600	15	SSE	0.2	2	1000			27	91%	11% (0.0 mm)	5	2.5 - 4.0
	1200	9	SW	0.2	2	999			29	75%	38% (0.2 mm)	6	4.0 - 6.0
	1800	13	SSW	0.3	2	998			28	82%	30% (0.2 mm)	7	6.0 - 9.0
15-07-24	0001	13	SSE	0.2	2	1000	33	27	28	88%	23% (0.0 mm)	8	9.0 - 14.0
	0600	15	ESE	0.2	2	1001			28	91%	24% (0.0 mm)	9	Over 14.0
	1200	9	SW	0.1	1	1001			30	73%	24% (0.0 mm)		
	1800	20	SSW	0.4	2	999			29	81%	30% (0.2 mm)		
16-07-24	0001	23	SSE	0.3	2	1002	32	27	28	88%	32% (0.2 mm)		
	0600	22	SE	0.3	2	1002			27	90%	14% (0.0 mm)		
	1200	13	SW	0.2	2	1001			29	74%	44% (0.2 mm)		
	1800	18	S	0.3	2	1000			28	84%	51% (0.4 mm)		

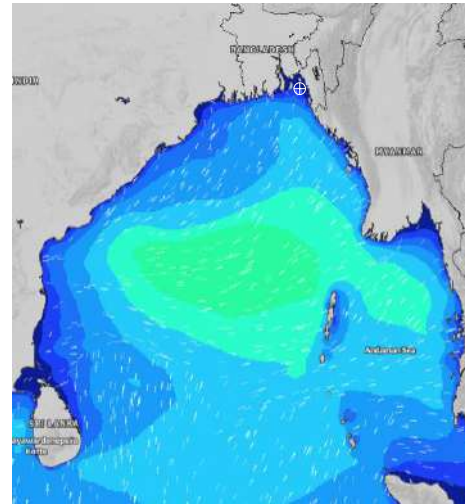
13 July 24 Sat (Probability 98%)



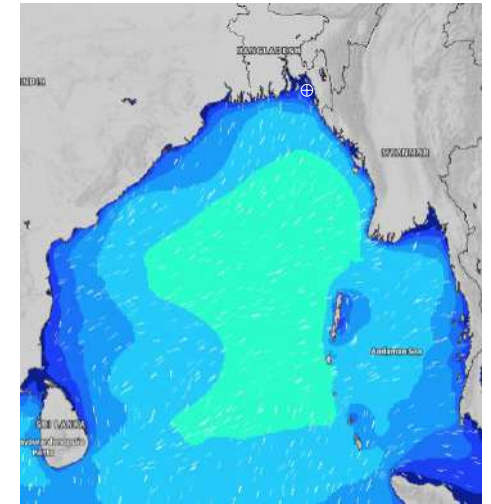
14 July 24 Sun (Probability 95%)



15 July 24 Mon Probability 90%



16 July 24 Tue (Probability 80%)



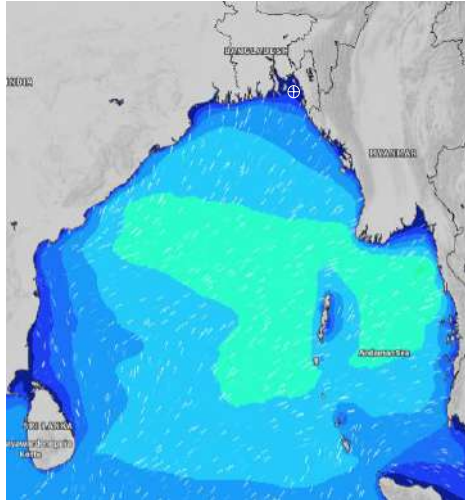
Significant wave height (m)

MARINE WEATHER FORECAST- NEAR AUTHORITY BUOY (Lat 22° 12' N, Long 091° 38' E)

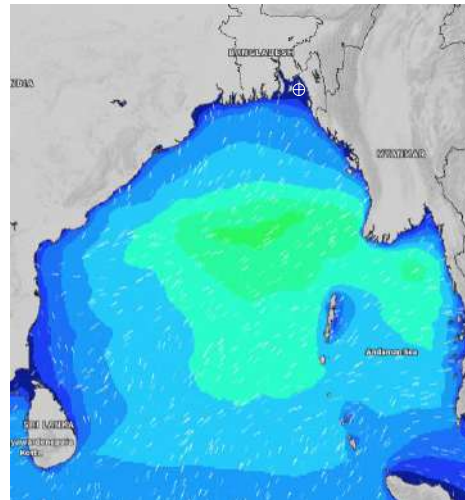
DATE : 13 to 20 July 2024

Date	Time	Max Wind Spd (kts)	Wind Direction	Wave Ht (m)	Sea State	Baro Pressure	Air Temp		Sea Surface Temp	Humidity (%)	Prob of Rain (%)	Sea State	Wave Ht (m)
							Max	Min					
17-07-24	0001	15	SSE	0.3	2	1002	32	27	28	88%	24% (0.0 mm)	0	0
	0600	13	SSE	0.3	2	1001			27	91%	18% (0.0 mm)	1	0 - 0.1
	1200	10	SW	0.2	2	1000			28	74%	44% (0.3 mm)	2	0.1 - 0.5
	1800	9	SSW	0.2	2	998			29	84%	40% (0.3 mm)	3	0.5 - 1.25
18-07-24	0001	8	S	0.1	1	1000	32	27	28	90%	24% (0.1 mm)	4	1.25 - 2.5
	0600	5	ESE	0.1	1	999			27	93%	24% (0.1 mm)	5	2.5 - 4.0
	1200	7	W	0.1	1	998			29	77%	47% (0.3 mm)	6	4.0 - 6.0
	1800	9	SW	0.1	1	996			29	85%	50% (0.4 mm)	7	6.0 - 9.0
19-07-24	0001	12	SSE	0.2	2	998	32	27	28	91%	51% (0.6 mm)	8	9.0 - 14.0
	0600	5	ESE	0.1	1	998			28	93%	45% (0.4 mm)	9	Over 14.0
	1200	5	SSE	0.1	1	997			30	77%	34% (0.2 mm)		
	1800	11	SSW	0.2	2	996			29	86%	33% (0.2 mm)		
20-07-24	0001	25	SSE	0.3	2	998	32	27	28	91%	51% (0.6 mm)		
	0600	23	SE	0.3	2	997			27	93%	45% (0.4 mm)		
	1200	18	S	0.3	2	997			30	77%	34% (0.2 mm)		
	1800	19	SSE	0.3	2	996			29	86%	33% (0.2 mm)		

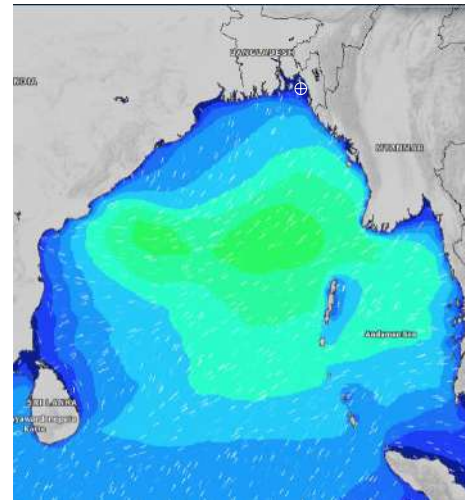
17 July 24 Wed (Probability 70%)



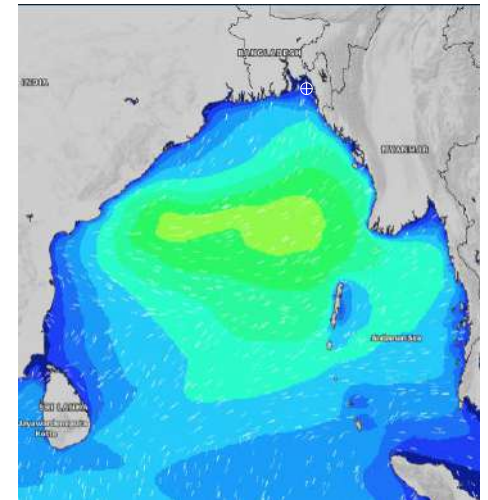
18 July 24 Thu (Probability 60%)



19 July 24 Fri (Probability 50%)



20 July 24 Sat (Probability 50%)



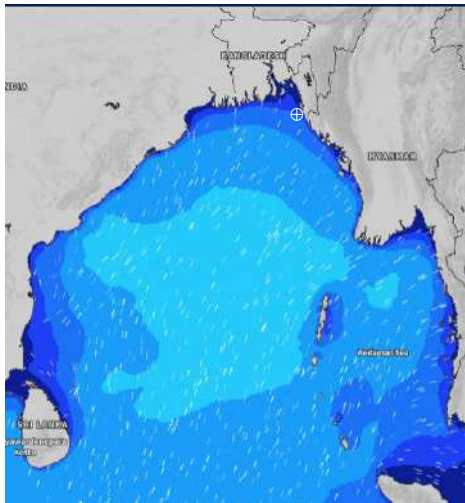
Significant wave height (m)

MARINE WEATHER FORECAST- 20 NM WEST OF ELEPHANT POINT (Lat 21° 10' N, Long 091° 42' E)

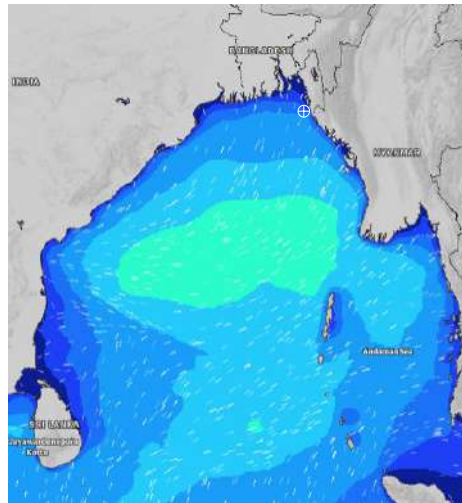
DATE : 13 to 20 July 2024

Date	Time	Max Wind Spd (kts)	Wind Direction	Wave Ht (m)	Sea State	Baro Pressure	Air Temp		Sea Surface Temp	Humidity (%)	Prob of Rain (%)	Sea State	Wave Ht (m)
							Max	Min					
13-07-24	0001	13	S	1.3	4	1002	29	26	28	94%	40% (0.2 mm)	0	0
	0600	11	SE	1.4	4	1001			28	96%	30% (0.2 mm)	1	0 - 0.1
	1200	15	SSE	1.4	4	1001			28	93%	90% (4.1 mm)	2	0.1 - 0.5
	1800	12	S	1.4	4	999			29	90%	52% (0.4 mm)	3	0.5 - 1.25
14-07-24	0001	14	SSE	1.5	4	1000	31	27	28	93%	60% (0.6 mm)	4	1.25 - 2.5
	0600	19	SE	1.6	4	1000			28	94%	72% (0.7 mm)	5	2.5 - 4.0
	1200	18	SSE	1.6	4	999			29	86%	71% (0.7 mm)	6	4.0 - 6.0
	1800	20	SSE	1.7	4	998			29	87%	33% (0.2 mm)	7	6.0 - 9.0
15-07-24	0001	23	SE	1.8	4	1000	31	27	28	91%	41% (0.3 mm)	8	9.0 - 14.0
	0600	26	SE	2.1	4	1000			28	92%	40% (0.4 mm)	9	Over 14.0
	1200	25	SSE	2.0	4	1001			29	80%	50% (0.4 mm)		
	1800	27	SSE	2.1	4	999			29	85%	24% (0.1 mm)		
16-07-24	0001	26	SE	2.1	4	1001	31	27	28	90%	41% (0.3 mm)		
	0600	24	SE	2.1	4	1002			28	92%	41% (0.3 mm)		
	1200	20	SSE	2.1	4	1002			28	79%	50% (0.4 mm)		
	1800	15	SSE	1.9	4	1000			29	84%	24% (0.1 mm)		

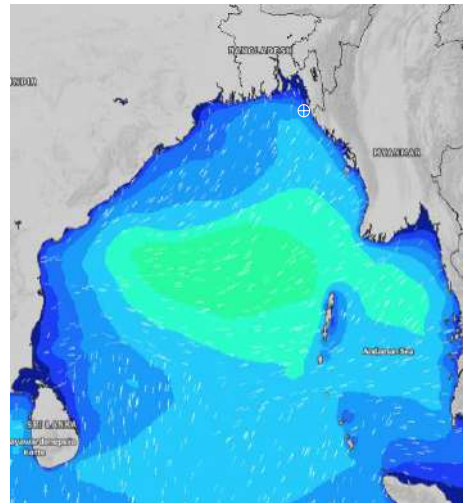
13 July 24 Sat (Probability 98%)



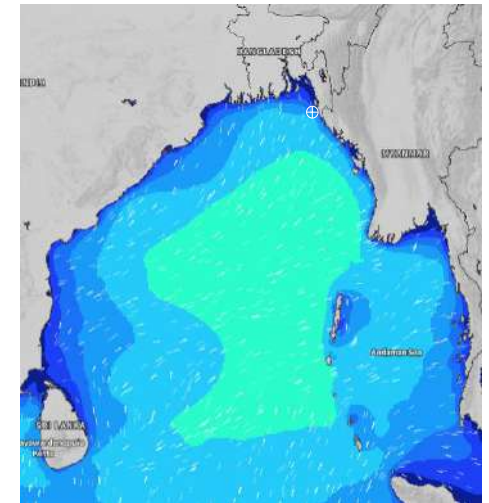
14 July 24 Sun (Probability 95%)



15 July 24 Mon Probability 90%



16 July 24 Tue (Probability 80%)



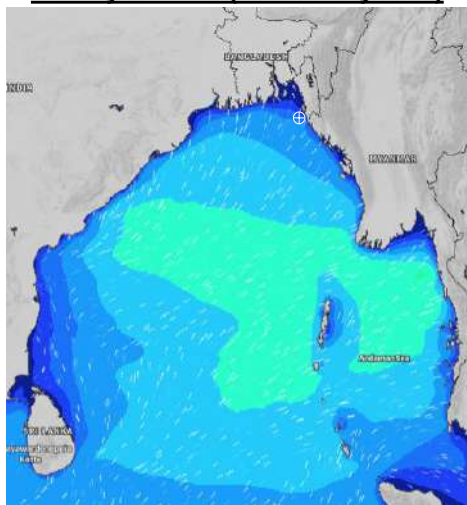
Significant wave height (m)

MARINE WEATHER FORECAST- 20 NM WEST OF ELEPHANT POINT (Lat 21° 10' N, Long 091° 42' E)

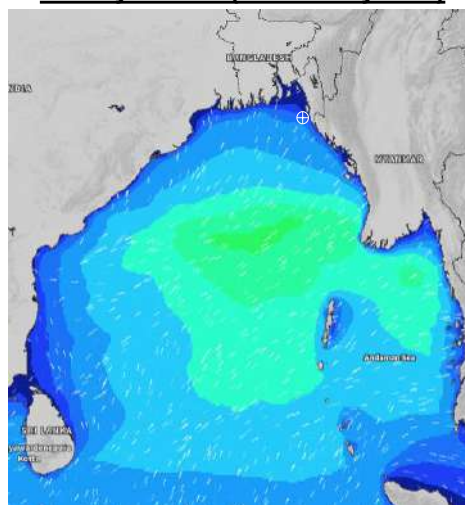
DATE : 13 to 20 July 2024

Date	Time	Max Wind Spd (kts)	Wind Direction	Wave Ht (m)	Sea State	Baro Pressure	Air Temp		Sea Surface Temp	Humidity (%)	Prob of Rain (%)	Sea State	Wave Ht (m)
							Max	Min					
17-07-24	0001	13	SSE	1.8	4	1002	31	27	29	97%	28% (0.1 mm)	0	0
	0600	13	SE	1.7	4	1001			28	88%	93% (2.0 mm)	1	0 - 0.1
	1200	11	S	1.6	4	1000			29	88%	87% (0.8 mm)	2	0.1 - 0.5
	1800	7	SW	1.6	4	998			29	90%	40% (0.3 mm)	3	0.5 - 1.25
18-07-24	0001	6	SSW	1.5	4	1000	32	27	28	92%	37% (0.2 mm)	4	1.25 - 2.5
	0600	5	E	1.5	4	999			28	92%	24% (0.1 mm)	5	2.5 - 4.0
	1200	7	S	1.5	4	998			29	79%	47% (0.3 mm)	6	4.0 - 6.0
	1800	10	SSE	1.5	4	996			29	86%	24% (0.1 mm)	7	6.0 - 9.0
19-07-24	0001	17	SE	1.7	4	998	31	27	28	88%	14% (0.6 mm)	8	9.0 - 14.0
	0600	18	ESE	1.9	4	997			28	89%	18% (0.4 mm)	9	Over 14.0
	1200	22	SSE	2.0	4	997			28	77%	34% (0.2 mm)		
	1800	23	SE	2.0	4	996			29	84%	22% (0.2 mm)		
20-07-24	0001	26	SE	2.3	4	997	31	27	28	90%	37% (0.2 mm)		
	0600	25	SE	2.3	4	997			28	89%	24% (0.1 mm)		
	1200	24	SE	2.4	4	998			28	77%	47% (0.3 mm)		
	1800	24	SE	2.4	4	996			28	82%	33% (0.2 mm)		

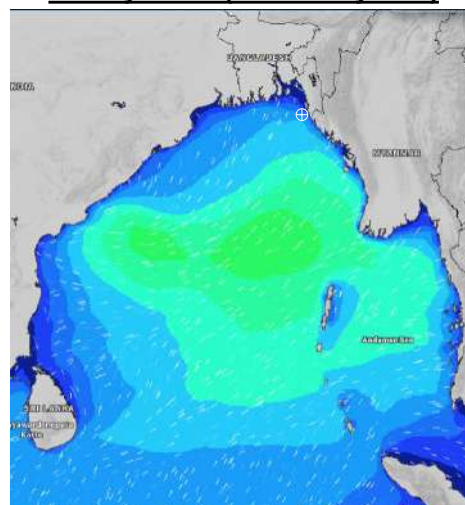
17 July 24 Wed (Probability 70%)



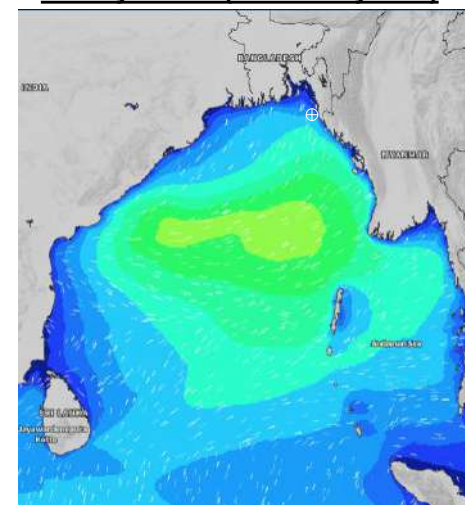
18 July 24 Thu (Probability 60%)



19 July 24 Fri (Probability 50%)



20 July 24 Sat (Probability 50%)



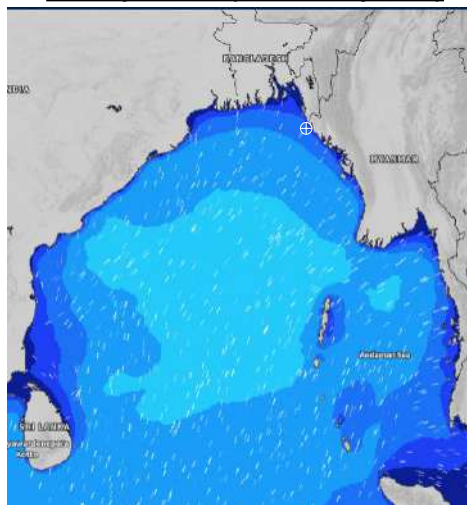
Significant wave height (m)

MARINE WEATHER FORECAST- 15 NM WEST OF ST. MARTIN'S LIGHT HOUSE (Lat 20° 37'N, Long 092° 03'E)

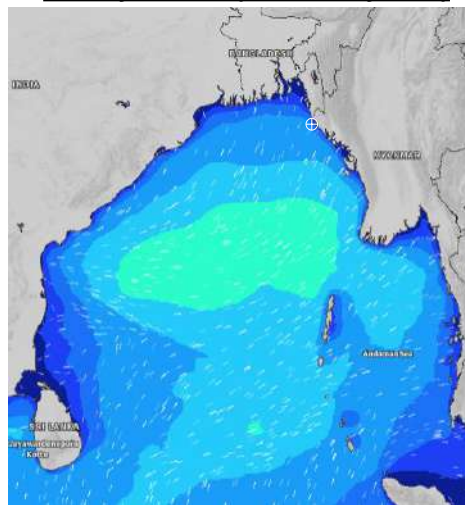
DATE : 13 to 20 July 2024

Date	Time	Max Wind Spd (kts)	Wind Direction	Wave Ht (m)	Sea State	Baro Pressure	Air Temp		Sea Surface Temp	Humidity (%)	Prob of Rain(%)	Sea State	Wave Ht (m)
							Max	Min					
13-07-24	0001	12	SSW	1.7	4	1003	29	26	28	93%	45% (0.4 mm)	0	0
	0600	9	SSW	1.7	4	1001			28	95%	94% (3.2 mm)	1	0 - 0.1
	1200	10	S	1.7	4	1002			28	90%	96% (3.1 mm)	2	0.1 - 0.5
	1800	9	SSW	1.7	4	999			29	90%	50% (0.4 mm)	3	0.5 - 1.25
14-07-24	0001	10	SSE	1.9	4	1001	30	26	28	93%	72% (0.7 mm)	4	1.25 - 2.5
	0600	11	SE	1.9	4	999			28	94%	81% (0.8 mm)	5	2.5 - 4.0
	1200	17	SE	2.0	4	1000			29	83%	73% (0.6 mm)	6	4.0 - 6.0
	1800	16	SE	2.1	4	998			29	87%	47% (0.4 mm)	7	6.0 - 9.0
15-07-24	0001	21	SE	2.3	4	1000	30	26	28	93%	37% (0.2 mm)	8	9.0 - 14.0
	0600	23	SE	2.5	4	1000			28	94%	24% (0.1 mm)	9	Over 14.0
	1200	24	SE	2.4	4	1002			28	84%	47% (0.3 mm)		
	1800	24	SE	2.4	4	1000			28	88%	24% (0.1 mm)		
16-07-24	0001	24	SE	2.5	4	1002	30	26	28	93%	14% (0.6 mm)		
	0600	19	SE	2.6	5	1001			28	92%	18% (0.4 mm)		
	1200	18	SE	2.7	5	1002			28	83%	34% (0.2 mm)		
	1800	12	S	2.5	4	1000			29	84%	22% (0.2 mm)		

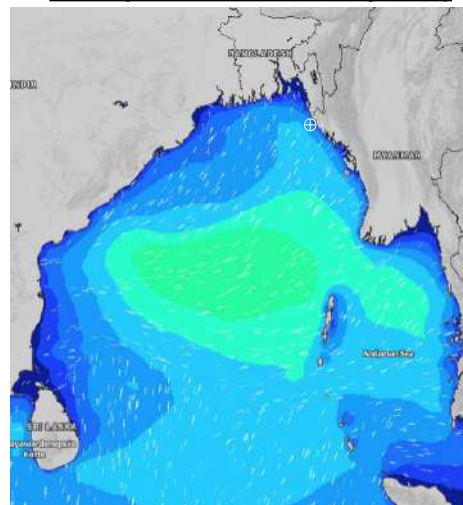
13 July 24 Sat (Probability 98%)



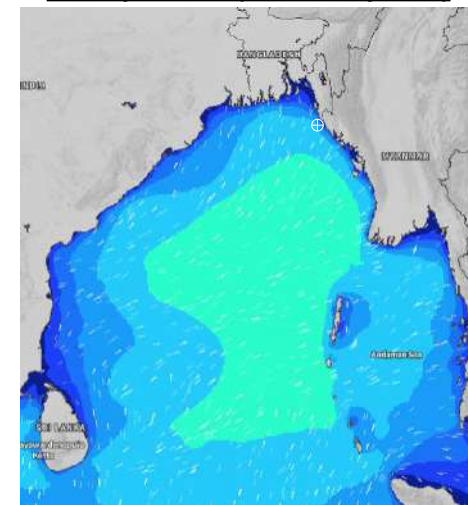
14 July 24 Sun (Probability 95%)



15 July 24 Mon Probability 90%



16 July 24 Tue (Probability 80%)



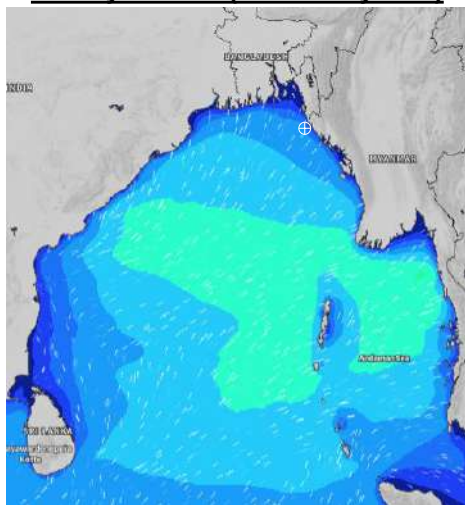
Significant wave height (m)

MARINE WEATHER FORECAST- 15 NM WEST OF ST. MARTIN'S LIGHT HOUSE (Lat 20° 37'N, Long 092° 03'E)

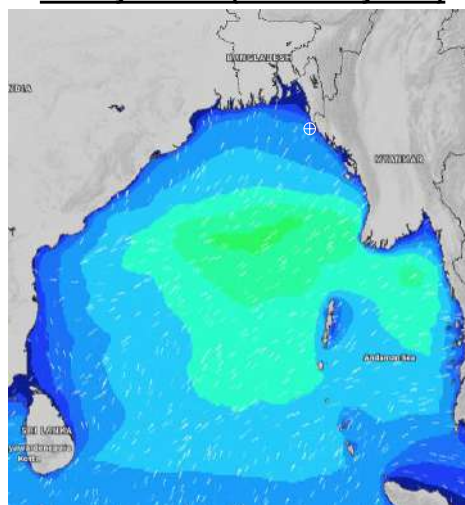
DATE : 13 to 20 July 2024

Date	Time	Max Wind Spd (kts)	Wind Direction	Wave Ht (m)	Sea State	Baro Pressure	Air Temp		Sea Surface Temp	Humidity (%)	Prob of Rain (%)	Sea State	Wave Ht (m)
							Max	Min					
17-07-24	0001	9	SSE	2.4	4	1002	27	27	28	90%	37% (0.2 mm)	0	0
	0600	8	SE	2.2	4	1000			28	92%	24% (0.1 mm)	1	0 - 0.1
	1200	8	SSE	2.1	4	1001			29	85%	47% (0.3 mm)	2	0.1 - 0.5
	1800	7	WSW	2.0	4	998			29	88%	24% (0.1 mm)	3	0.5 - 1.25
18-07-24	0001	6	W	2.0	4	1000	27	27	29	90%	14% (0.6 mm)	4	1.25 - 2.5
	0600	5	SW	2.0	4	998			28	91%	18% (0.4 mm)	5	2.5 - 4.0
	1200	6	SE	2.0	4	999			28	84%	34% (0.2 mm)	6	4.0 - 6.0
	1800	12	SSE	2.1	4	996			29	87%	34% (0.2 mm)	7	6.0 - 9.0
19-07-24	0001	15	SE	2.4	4	998	26	26	29	90%	64% (0.6 mm)	8	9.0 - 14.0
	0600	17	SE	2.6	5	996			28	92%	75% (0.7 mm)	9	Over 14.0
	1200	15	SE	2.5	4	998			28	85%	43% (0.1 mm)		
	1800	21	SE	2.7	5	997			29	88%	34% (0.2 mm)		
20-07-24	0001	21	SSE	2.9	5	998	26	26	28	90%	64% (0.6 mm)		
	0600	20	SSE	2.9	5	996			28	92%	75% (0.7 mm)		
	1200	20	SSE	3.0	5	998			28	85%	43% (0.1 mm)		
	1800	21	SSE	3.2	5	996			28	88%	34% (0.2 mm)		

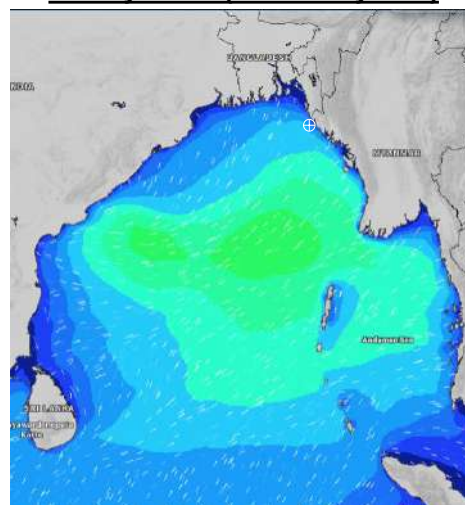
17 July 24 Wed (Probability 70%)



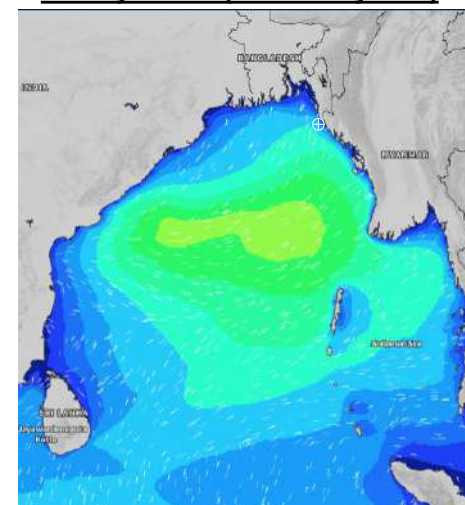
18 July 24 Thu (Probability 60%)



19 July 24 Fri (Probability 50%)



20 July 24 Sat (Probability 50%)



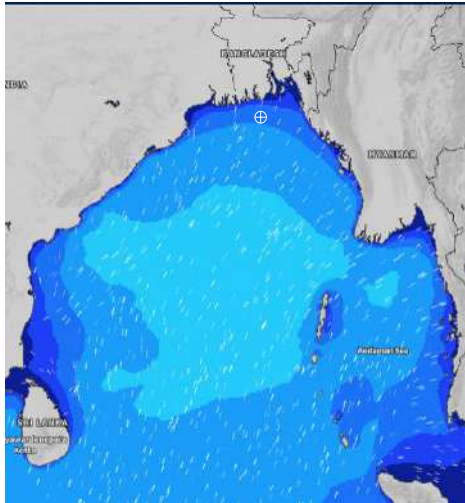
Significant wave height (m)

MARINE WEATHER FORECAST- 40 NM ESE OF PAYRA FAIRWAY (Lat 21° 07' N, Long 090° 45' E)

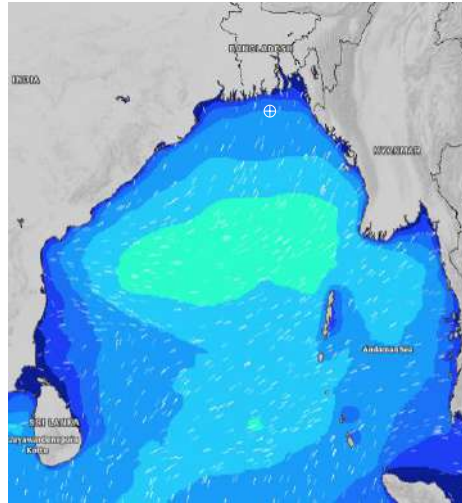
DATE : 13 to 20 July 2024

Date	Time	Max Wind Spd (kts)	Wind Direction	Wave Ht (m)	Sea State	Baro Pressure	Air Temp		Sea Surface Temp	Humidity (%)	Prob of Rain (%)	Sea State	Wave Ht (m)
							Max	Min					
13-07-24	0001	16	SW	1.7	4	1002	30	27	28	90%	50% (0.4 mm)	0	0
	0600	12	SW	1.8	4	1000			29	92%	91% (4.0 mm)	1	0 - 0.1
	1200	11	SSW	1.7	4	1001			29	84%	76% (3.1 mm)	2	0.1 - 0.5
	1800	10	SSW	1.8	4	998			29	87%	24% (0.2 mm)	3	0.5 - 1.25
14-07-24	0001	10	S	1.8	4	999	31	28	29	90%	39% (0.2 mm)	4	1.25 - 2.5
	0600	11	SE	1.9	4	999			28	91%	37% (0.2 mm)	5	2.5 - 4.0
	1200	16	SE	2.0	4	999			29	82%	34% (0.2 mm)	6	4.0 - 6.0
	1800	16	SE	2.1	4	997			29	84%	14% (0.0 mm)	7	6.0 - 9.0
15-07-24	0001	17	SE	2.3	4	1000	31	28	29	87%	30% (0.2 mm)	8	9.0 - 14.0
	0600	22	SE	2.4	4	999			29	90%	42% (0.4 mm)	9	Over 14.0
	1200	24	SE	2.4	4	1000			29	80%	35% (0.2 mm)		
	1800	25	SE	2.4	4	999			29	84%	10% (0.0 mm)		
16-07-24	0001	26	SE	2.5	4	1000	31	28	28	87%	30% (0.2 mm)		
	0600	20	SE	2.7	5	1000			28	82%	42% (0.4 mm)		
	1200	18	SSE	2.7	5	1001			29	82%	35% (0.2 mm)		
	1800	14	S	2.5	4	1000			29	84%	10% (0.0 mm)		

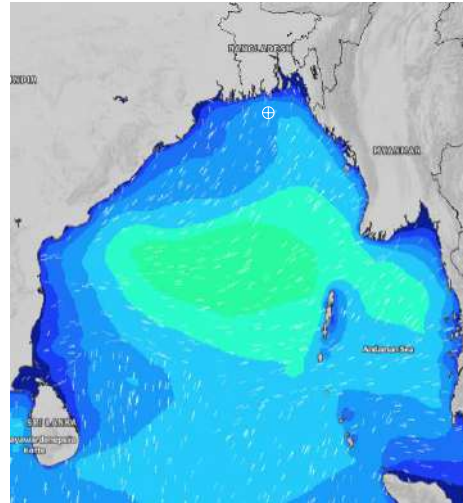
13 July 24 Sat (Probability 98%)



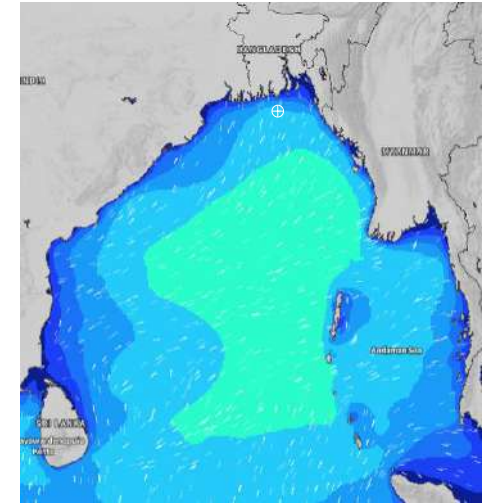
14 July 24 Sun (Probability 95%)



15 July 24 Mon Probability 90%



16 July 24 Tue (Probability 80%)



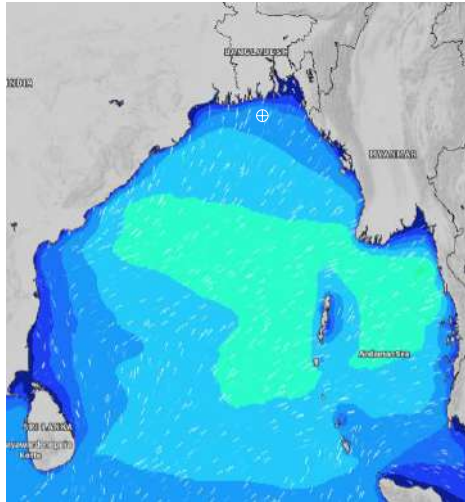
Significant wave height (m)

MARINE WEATHER FORECAST- 40 NM ESE OF PAYRA FAIRWAY (Lat 21° 07' N, Long 090° 45' E)

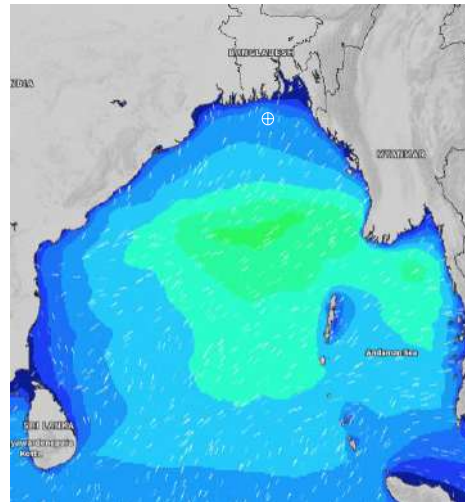
DATE : 13 to 20 July 2024

Date	Time	Max Wind Spd (kts)	Wind Direction	Wave Ht (m)	Sea State	Baro Pressure	Air Temp		Sea Surface Temp	Humidity (%)	Prob of Rain (%)	Sea State	Wave Ht (m)
							Max	Min					
17-07-24	0001	14	S	2.4	4	1001	31	28	29	89%	61% (0.6 mm)	0	0
	0600	11	S	2.3	4	1000			28	90%	44% (0.4 mm)	1	0 - 0.1
	1200	9	S	2.2	4	1000			29	82%	43% (0.4 mm)	2	0.1 - 0.5
	1800	8	SW	2.1	4	998			29	84%	24% (0.1 mm)	3	0.5 - 1.25
18-07-24	0001	8	SSW	2.1	4	999	31	28	28	90%	61% (0.6 mm)	4	1.25 - 2.5
	0600	5	ESE	2.1	4	998			28	91%	44% (0.4 mm)	5	2.5 - 4.0
	1200	9	ESE	2.0	4	998			29	85%	43% (0.4 mm)	6	4.0 - 6.0
	1800	9	SE	2.1	4	996			29	86%	24% (0.1 mm)	7	6.0 - 9.0
19-07-24	0001	15	ESE	2.3	4	997	31	28	29	88%	61% (0.6 mm)	8	9.0 - 14.0
	0600	15	ESE	2.4	4	997			29	90%	44% (0.4 mm)	9	Over 14.0
	1200	18	SE	2.5	4	996			29	82%	43% (0.4 mm)		
	1800	19	SE	2.4	4	995			29	86%	24% (0.1 mm)		
20-07-24	0001	20	SSE	2.6	5	996	30	28	29	88%	61% (0.6 mm)		
	0600	18	SE	2.7	5	996			29	90%	44% (0.4 mm)		
	1200	15	SE	2.9	5	997			29	82%	43% (0.4 mm)		
	1800	15	SSE	2.9	5	997			29	86%	24% (0.1 mm)		

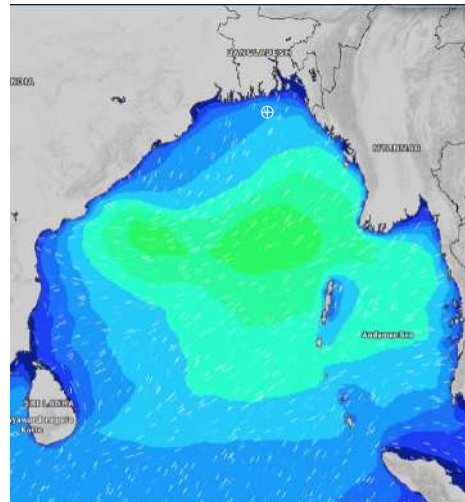
17 July 24 Wed (Probability 70%)



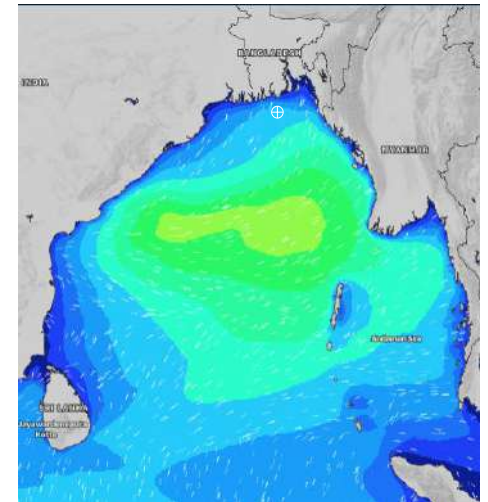
18 July 24 Thu (Probability 60%)



19 July 24 Fri (Probability 50%)



20 July 24 Sat (Probability 50%)



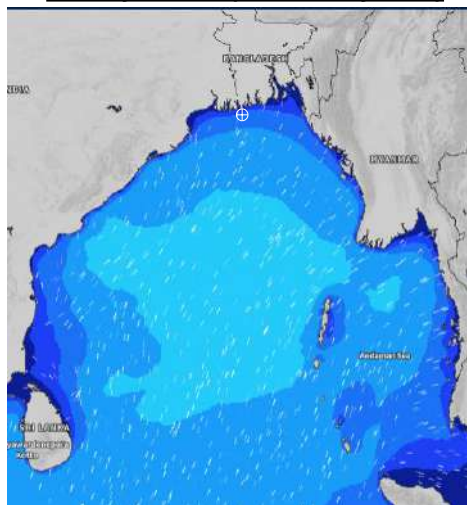
Significant wave height (m)

MARINE WEATHER FORECAST- 10 NM SOUTH OF MONGLA FAIRWAY (Lat 21° 16' N, Long 089° 34' E)

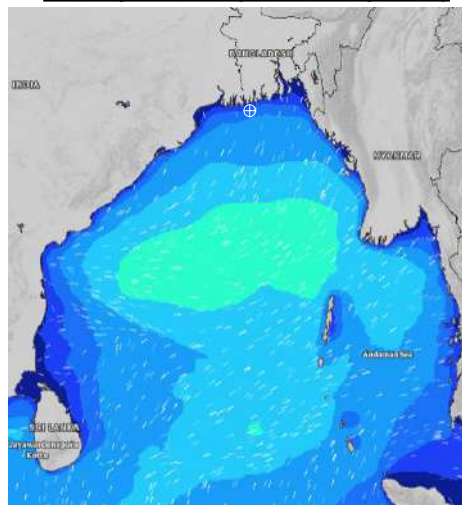
DATE : 13 to 20 July 2024

Date	Time	Max Wind Spd (kts)	Wind Direction	Wave Ht (m)	Sea State	Baro Pressure	Air Temp		Sea Surface Temp	Humidity (%)	Prob of Rain (%)	Sea State	Wave Ht (m)
							Max	Min					
13-07-24	0001	18	SSW	1.7	4	1001	31	27	29	92%	32% (0.2 mm)	0	0
	0600	14	SSW	1.7	4	999			29	96%	85% (1.5 mm)	1	0 - 0.1
	1200	11	SW	1.7	4	1000			29	80%	59% (0.4 mm)	2	0.1 - 0.5
	1800	10	SSW	1.7	4	998			29	87%	24% (0.1 mm)	3	0.5 - 1.25
14-07-24	0001	11	S	1.8	4	999	32	28	29	93%	24% (0.1 mm)	4	1.25 - 2.5
	0600	8	SE	1.8	4	998			29	94%	24% (0.1 mm)	5	2.5 - 4.0
	1200	10	SE	1.8	4	998			29	77%	61% (0.4 mm)	6	4.0 - 6.0
	1800	12	ESE	1.9	4	997			29	79%	20% (0.0 mm)	7	6.0 - 9.0
15-07-24	0001	14	ESE	2.2	4	999	32	28	29	90%	31% (0.2 mm)	8	9.0 - 14.0
	0600	16	ESE	2.1	4	999			29	91%	39% (0.3 mm)	9	Over 14.0
	1200	23	ESE	2.1	4	999			29	74%	69% (0.6 mm)		
	1800	22	ESE	2.2	4	998			29	79%	14% (0.0 mm)		
16-07-24	0001	24	SE	2.3	4	999	32	28	29	90%	24% (0.1 mm)		
	0600	23	SE	2.5	4	999			29	91%	38% (0.1 mm)		
	1200	18	SSE	2.5	4	1000			29	75%	44% (0.3 mm)		
	1800	15	SSE	2.4	4	999			29	80%	10% (0.0 mm)		

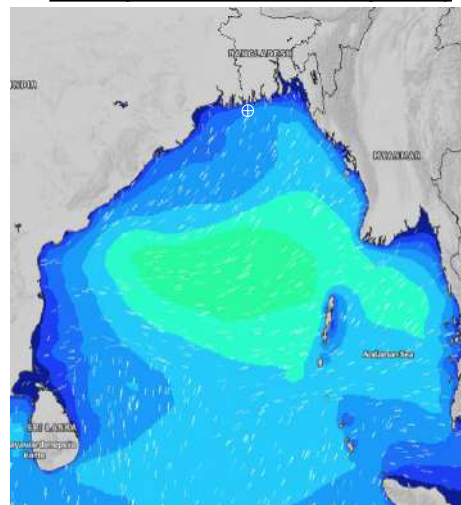
13 July 24 Sat (Probability 98%)



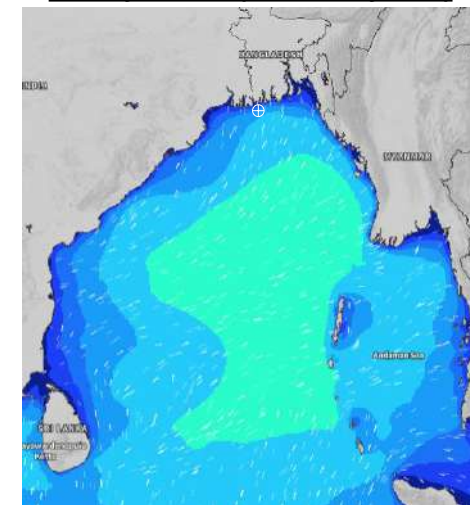
14 July 24 Sun (Probability 95%)



15 July 24 Mon Probability 90%



16 July 24 Tue (Probability 80%)



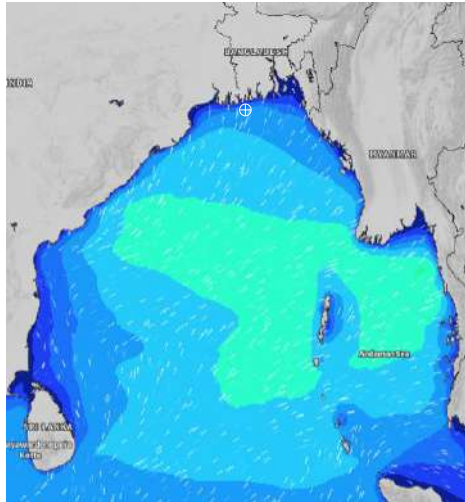
Significant wave height (m)

MARINE WEATHER FORECAST- 10 NM SOUTH OF MONGLA FAIRWAY (Lat 21° 16' N, Long 089° 34' E)

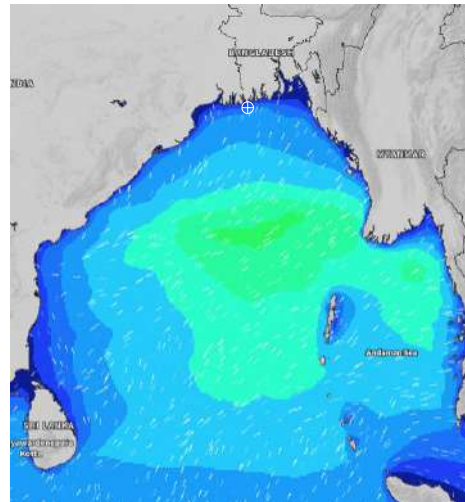
DATE : 13 to 20 July 2024

Date	Time	Max Wind Spd (kts)	Wind Direction	Wave Ht (m)	Sea State	Baro Pressure	Air Temp		Sea Surface Temp	Humidity (%)	Prob of Rain (%)	Sea State	Wave Ht (m)
							Max	Min					
17-07-24	0001	13	S	2.3	4	1000	33	27	29	90%	37% (0.2 mm)	0	0
	0600	9	SSW	2.2	4	999			28	91%	24% (0.1 mm)	1	0 - 0.1
	1200	7	S	2.2	4	1000			29	74%	47% (0.3 mm)	2	0.1 - 0.5
	1800	10	SSW	2.1	4	998			29	79%	24% (0.1 mm)	3	0.5 - 1.25
18-07-24	0001	10	S	2.1	4	999	33	27	29	89%	14% (0.6 mm)	4	1.25 - 2.5
	0600	7	ESE	2.0	4	998			28	91%	18% (0.4 mm)	5	2.5 - 4.0
	1200	10	E	2.0	4	998			29	75%	24% (0.0 mm)	6	4.0 - 6.0
	1800	10	ESE	2.1	4	996			29	79%	24% (0.0 mm)	7	6.0 - 9.0
19-07-24	0001	12	ESE	2.1	4	997	33	27	29	89%	45% (0.7 mm)	8	9.0 - 14.0
	0600	15	E	2.2	4	996			29	91%	32% (0.4 mm)	9	Over 14.0
	1200	17	E	2.2	4	996			29	76%	24% (0.0 mm)		
	1800	14	ESE	2.2	4	995			29	79%	24% (0.0 mm)		
20-07-24	0001	16	SE	2.2	4	996	32	27	29	89%	45% (0.7 mm)		
	0600	14	SE	2.3	4	995			29	91%	32% (0.4 mm)		
	1200	12	SE	2.5	4	996			29	76%	24% (0.0 mm)		
	1800	9	ESE	2.5	4	995			29	79%	24% (0.0 mm)		

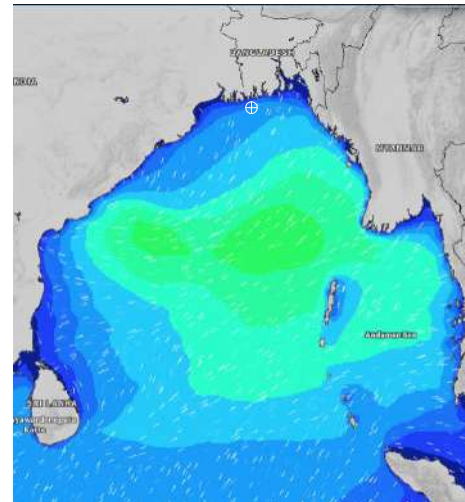
17 July 24 Wed (Probability 70%)



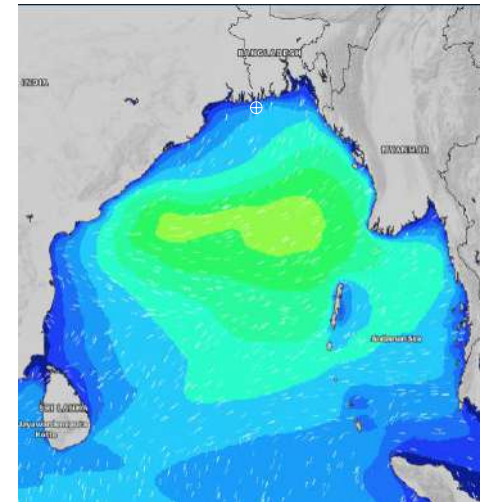
18 July 24 Thu (Probability 60%)



19 July 24 Fri (Probability 50%)



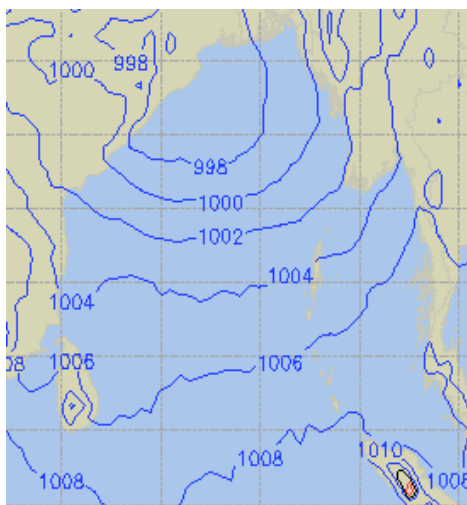
20 July 24 Sat (Probability 50%)



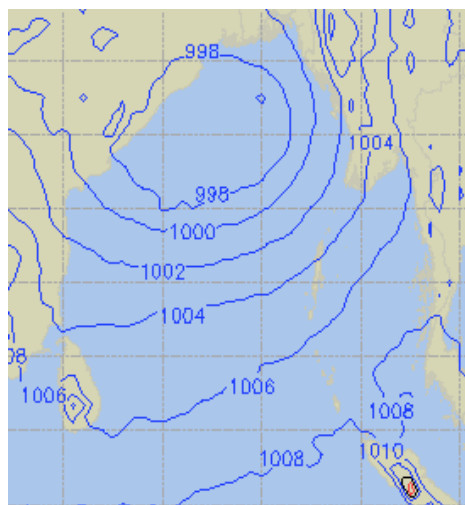
Significant wave height (m)

PREDICTED SURFACE PRESSURE FORECAST (13 to 19 July 2024)

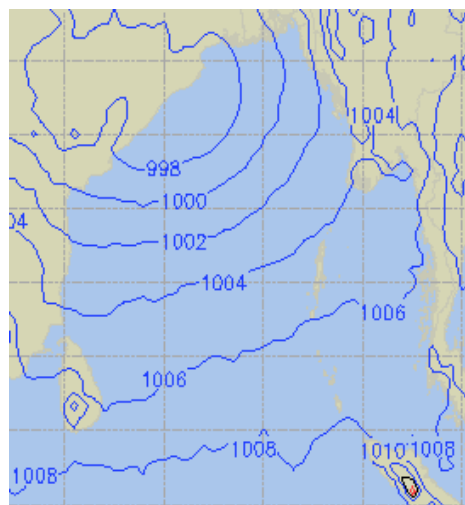
13 July 24 Sat (Probability 98%)



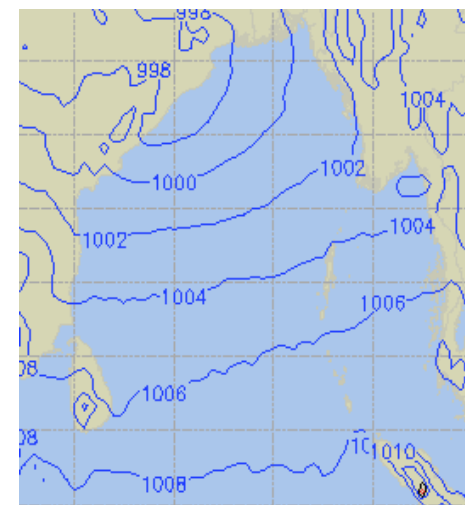
14 July 24 Sun (Probability 95%)



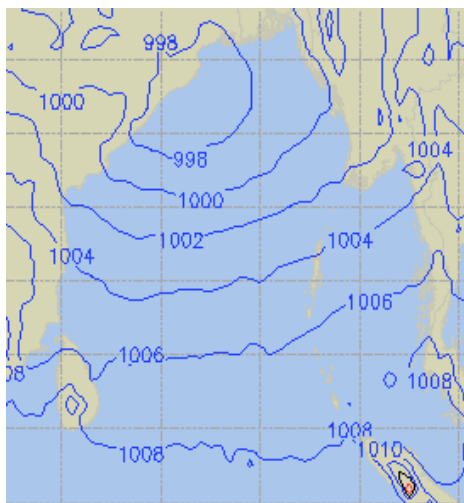
15 July 24 Mon (Probability 90%)



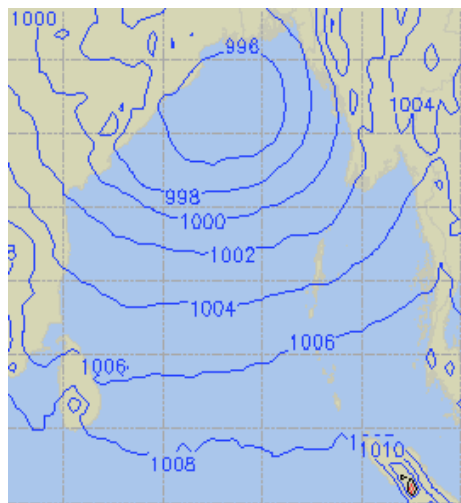
16 July 24 Tue (Probability 80%)



17 July 24 Wed (Probability 70%)



18 July 24 Thu (Probability 60%)



19 July 24 Fri (Probability 50%)

