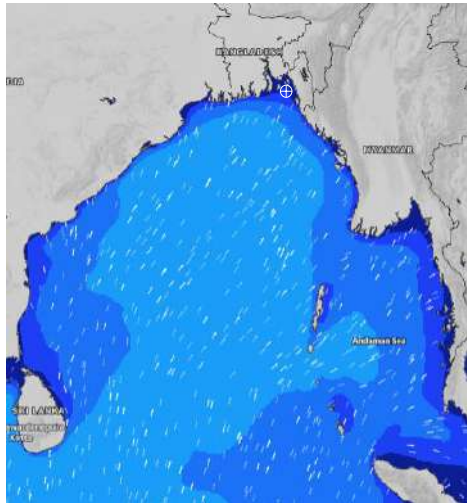


# MARINE WEATHER FORECAST- NEAR AUTHORITY BUOY (Lat 22° 12' N, Long 091° 38' E)

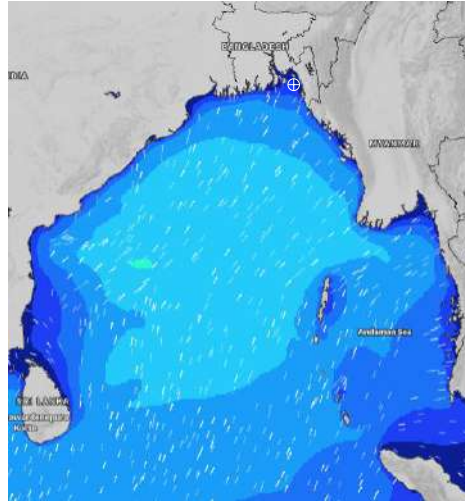
**DATE : 12 to 19 July 2024**

Date	Time	Max Wind Spd (kts)	Wind Direction	Wave Ht (m)	Sea State	Baro Pressure	Air Temp		Sea Surface Temp	Humidity (%)	Prb of Rain (%)	Sea State	Wave Ht (m)
							Max	Min					
12-07-24	0001	18	SSE	0.4	2	1003	29	26	27	94%	24% (0.1mm)	0	0
	0600	18	SSE	0.3	2	1002			27	95%	24% (0.1 mm)	1	0 - 0.1
	1200	19	SSE	0.4	2	1004			27	89%	89% (2.3 mm)	2	0.1 - 0.5
	1800	18	SSE	0.4	2	1002			28	90%	53% (0.4 mm)	3	0.5 - 1.25
13-07-24	0001	19	SSE	0.4	2	1002	30	26	26	94%	50% (0.4 mm)	4	1.25 - 2.5
	0600	18	SSE	0.3	2	1001			27	94%	44% (0.3 mm)	5	2.5 - 4.0
	1200	16	S	0.3	2	1001			29	81%	66% (0.6 mm)	6	4.0 - 6.0
	1800	16	S	0.3	2	999			28	87%	32% (0.2 mm)	7	6.0 - 9.0
14-07-24	0001	18	SSE	0.3	2	1000	32	27	27	91%	32% (0.2 mm)	8	9.0 - 14.0
	0600	18	SE	0.3	2	1000			27	91%	24% (0.1 mm)	9	Over 14.0
	1200	12	SSW	0.2	2	999			29	75%	46% (0.2 mm)		
	1800	20	SSW	0.4	2	998			28	86%	51% (0.4 mm)		
15-07-24	0001	16	SSE	0.2	2	1001	33	27	28	88%	32% (0.2 mm)		
	0600	11	SE	0.2	2	1001			27	90%	14% (0.0 mm)		
	1200	7	WSW	0.1	1	1000			30	74%	44% (0.2 mm)		
	1800	12	SSW	0.2	2	999			29	84%	51% (0.4 mm)		

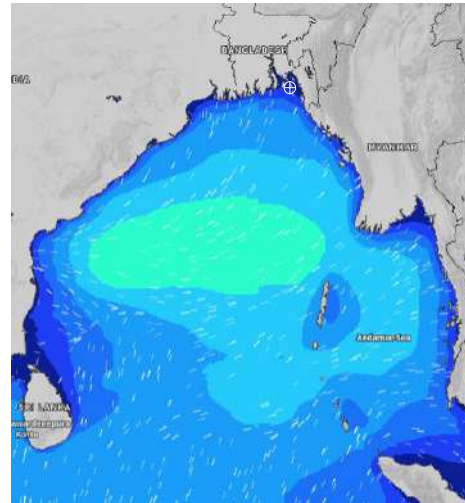
**12 July 24 Fri (Probability 98%)**



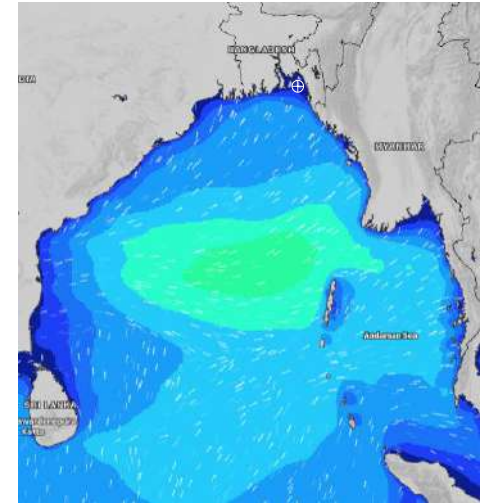
**13 July 24 Sat (Probability 95%)**



**14 July 24 Sun Probability 90%**



**15 July 24 Mon (Probability 80%)**



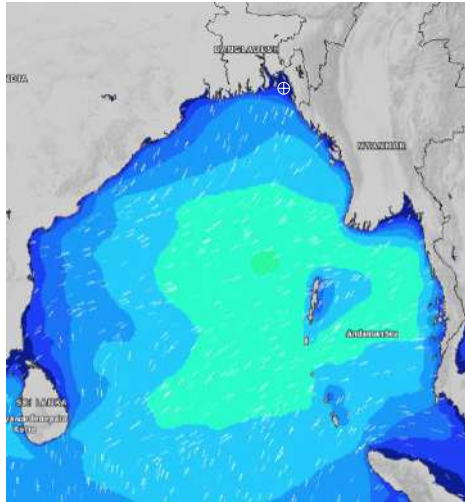
Significant wave height (m)

**MARINE WEATHER FORECAST- NEAR AUTHORITY BUOY (Lat 22° 12' N, Long 091° 38' E)**

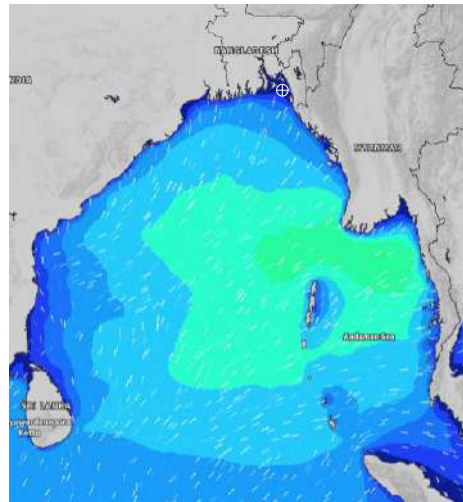
**DATE : 12 to 19 July 2024**

Date	Time	Max Wind Spd (kts)	Wind Direction	Wave Ht (m)	Sea State	Baro Pressure	Air Temp		Sea Surface Temp	Humidity (%)	Prob of Rain (%)	Sea State	Wave Ht (m)
							Max	Min					
16-07-24	0001	18	SE	0.2	2	1001	32	27	28	88%	24% (0.0 mm)	0	0
	0600	11	ESE	0.1	1	1001			27	91%	18% (0.0 mm)	1	0 - 0.1
	1200	9	WSW	0.1	1	1001			30	74%	44% (0.3 mm)	2	0.1 - 0.5
	1800	17	SSW	0.3	2	999			29	84%	40% (0.3 mm)	3	0.5 - 1.25
17-07-24	0001	18	S	0.2	2	1001	32	27	28	90%	24% (0.1 mm)	4	1.25 - 2.5
	0600	12	SE	0.2	2	1001			28	93%	24% (0.1 mm)	5	2.5 - 4.0
	1200	8	WSW	0.1	1	1000			29	77%	47% (0.3 mm)	6	4.0 - 6.0
	1800	7	WSW	0.2	2	998			29	85%	50% (0.4 mm)	7	6.0 - 9.0
18-07-24	0001	5	SE	0.1	1	999	32	27	27	91%	51% (0.6 mm)	8	9.0 - 14.0
	0600	5	ENE	0.1	1	999			27	93%	45% (0.4 mm)	9	Over 14.0
	1200	4	W	0.2	2	997			30	77%	34% (0.2 mm)		
	1800	15	SSW	0.3	2	996			29	86%	33% (0.2 mm)		
19-07-24	0001	22	SE	0.3	2	997	32	27	28	91%	51% (0.6 mm)		
	0600	22	SE	0.3	2	998			27	93%	45% (0.4 mm)		
	1200	17	SSW	0.3	2	997			31	77%	34% (0.2 mm)		
	1800	23	S	0.4	2	995			30	86%	33% (0.2 mm)		

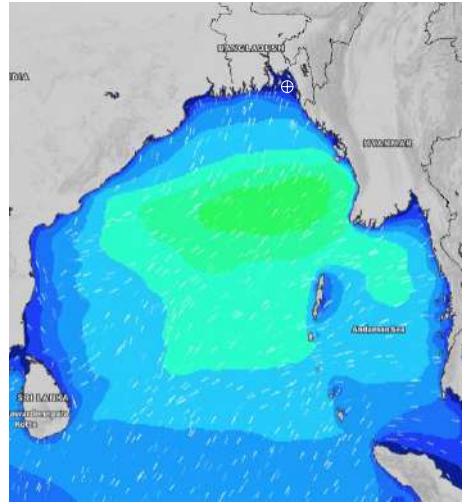
**16 July 24 Tue (Probability 70%)**



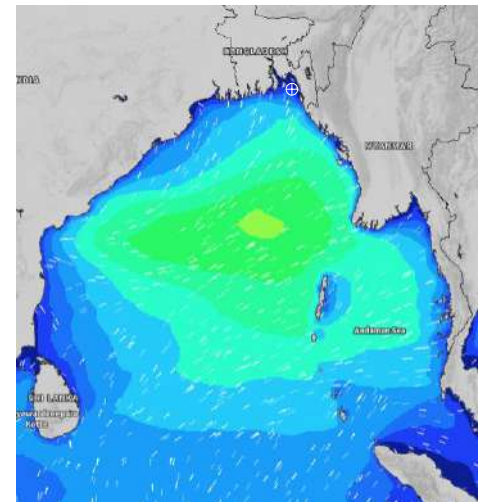
**17 July 24 Wed (Probability 60%)**



**18 July 24 Thu (Probability 50%)**



**19 July 24 Fri (Probability 50%)**



Significant wave height (m)

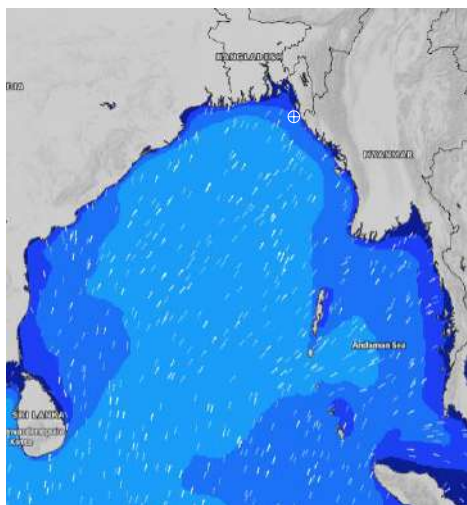


# MARINE WEATHER FORECAST- 20 NM WEST OF ELEPHANT POINT (Lat 21° 10' N, Long 091° 42' E)

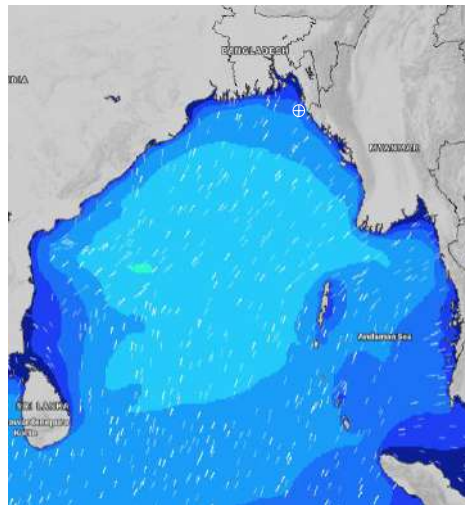
**DATE : 12 to 19 July 2024**

Date	Time	Max Wind Spd (kts)	Wind Direction	Wave Ht (m)	Sea State	Baro Pressure	Air Temp		Sea Surface Temp	Humidity (%)	Prob of Rain (%)	Sea State	Wave Ht (m)
							Max	Min					
12-07-24	0001	14	S	1.3	4	1003	28	26	28	94%	40% (0.2 mm)	0	0
	0600	15	S	1.4	4	1002			28	96%	30% (0.2 mm)	1	0 - 0.1
	1200	15	S	1.3	4	1004			28	93%	90% (4.1 mm)	2	0.1 - 0.5
	1800	15	S	1.5	4	1002			28	90%	52% (0.4 mm)	3	0.5 - 1.25
13-07-24	0001	16	SSE	1.6	4	1002	30	26	28	93%	60% (0.6 mm)	4	1.25 - 2.5
	0600	17	SE	1.6	4	1002			27	94%	72% (0.7 mm)	5	2.5 - 4.0
	1200	17	SSE	1.6	4	1001			28	86%	71% (0.7 mm)	6	4.0 - 6.0
	1800	11	S	1.5	4	999			29	87%	33% (0.2 mm)	7	6.0 - 9.0
14-07-24	0001	15	SSE	1.6	4	1000	31	27	28	91%	41% (0.3 mm)	8	9.0 - 14.0
	0600	17	SE	1.7	4	1000			28	92%	40% (0.4 mm)	9	Over 14.0
	1200	20	SSE	1.8	4	999			28	80%	50% (0.4 mm)		
	1800	17	SSE	1.7	4	998			29	85%	24% (0.1 mm)		
15-07-24	0001	20	SE	1.8	4	1000	32	27	28	90%	41% (0.3 mm)		
	0600	20	SE	1.8	4	1001			28	92%	41% (0.3 mm)		
	1200	20	SSE	1.7	4	1001			29	79%	50% (0.4 mm)		
	1800	24	SSE	1.8	4	999			29	84%	24% (0.1 mm)		

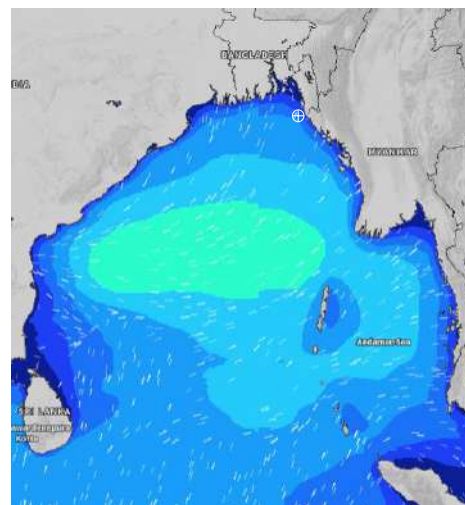
**12 July 24 Fri (Probability 98%)**



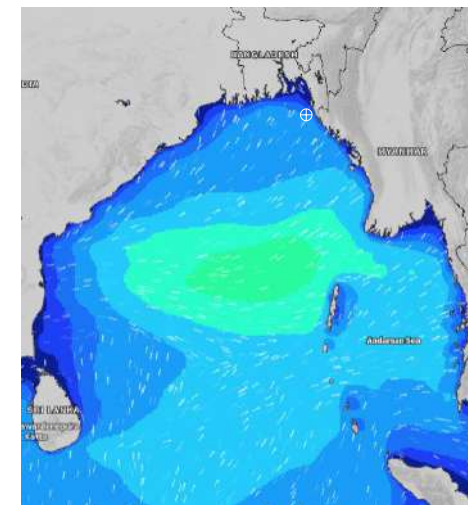
**13 July 24 Sat (Probability 95%)**



**14 July 24 Sun Probability 90%**



**15 July 24 Mon (Probability 80%)**



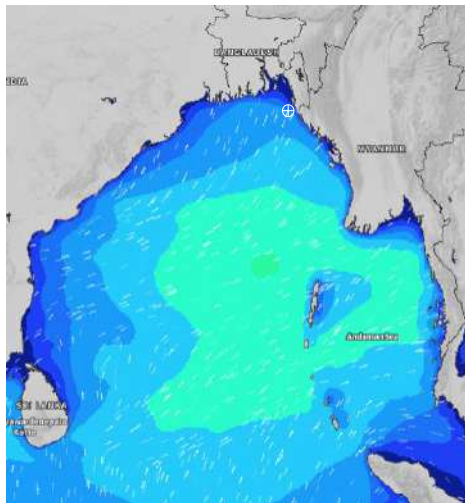
Significant wave height (m)

# MARINE WEATHER FORECAST- 20 NM WEST OF ELEPHANT POINT (Lat 21° 10' N, Long 091° 42' E)

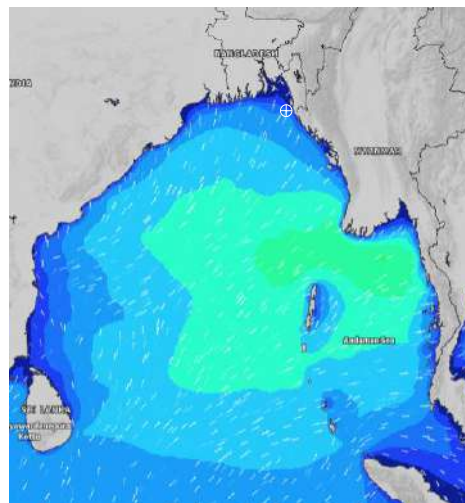
**DATE : 12 to 19 July 2024**

Date	Time	Max Wind Spd (kts)	Wind Direction	Wave Ht (m)	Sea State	Baro Pressure	Air Temp		Sea Surface Temp	Humidity (%)	Prob of Rain (%)	Sea State	Wave Ht (m)
							Max	Min					
16-07-24	0001	25	SE	1.8	4	1001	31	27	28	89%	28% (0.1 mm)	0	0
	0600	21	SE	1.9	4	1001			28	90%	18% (0.0 mm)	1	0 - 0.1
	1200	20	SSE	1.8	4	1001			29	79%	44% (0.3 mm)	2	0.1 - 0.5
	1800	18	SSE	1.7	4	999			29	86%	40% (0.3 mm)	3	0.5 - 1.25
17-07-24	0001	17	SSE	1.6	4	1001	31	27	28	89%	24% (0.1 mm)	4	1.25 - 2.5
	0600	13	SSE	1.6	4	1001			28	90%	24% (0.1 mm)	5	2.5 - 4.0
	1200	10	SSE	1.6	4	1000			28	78%	47% (0.3 mm)	6	4.0 - 6.0
	1800	8	SSE	1.6	4	998			28	85%	50% (0.4 mm)	7	6.0 - 9.0
18-07-24	0001	4	SSE	1.6	4	999	32	27	28	90%	51% (0.6 mm)	8	9.0 - 14.0
	0600	3	SE	1.6	4	998			28	91%	45% (0.4 mm)	9	Over 14.0
	1200	8	SE	1.6	4	998			28	83%	34% (0.2 mm)		
	1800	17	SSE	1.8	4	996			28	86%	33% (0.2 mm)		
19-07-24	0001	21	SSE	2.2	4	997	31	27	28	90%	51% (0.6 mm)		
	0600	25	SE	2.4	4	998			28	91%	45% (0.4 mm)		
	1200	25	SE	2.4	4	998			28	82%	34% (0.2 mm)		
	1800	23	SSE	2.3	4	996			28	86%	33% (0.2 mm)		

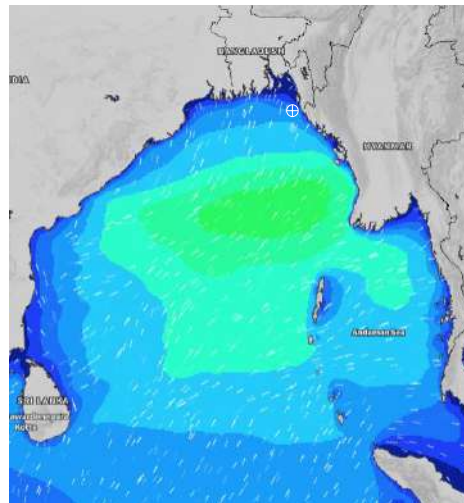
**16 July 24 Tue (Probability 70%)**



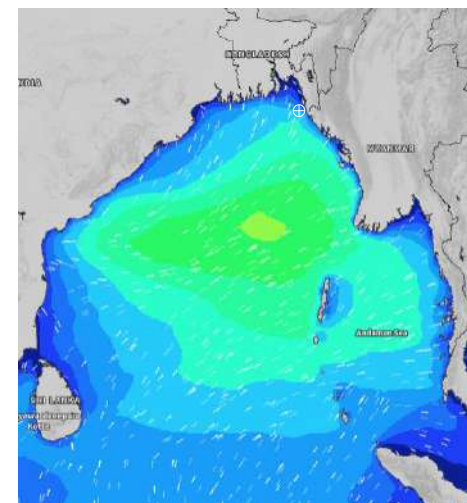
**17 July 24 Wed (Probability 60%)**



**18 July 24 Thu (Probability 50%)**



**19 July 24 Fri (Probability 50%)**



Significant wave height (m)

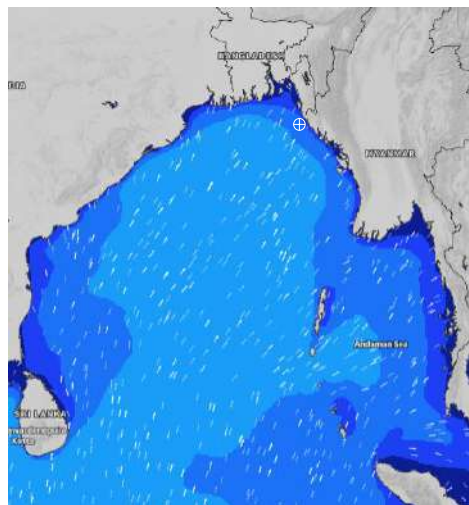


# MARINE WEATHER FORECAST- 15 NM WEST OF ST. MARTIN'S LIGHT HOUSE (Lat 20° 37'N, Long 092° 03'E)

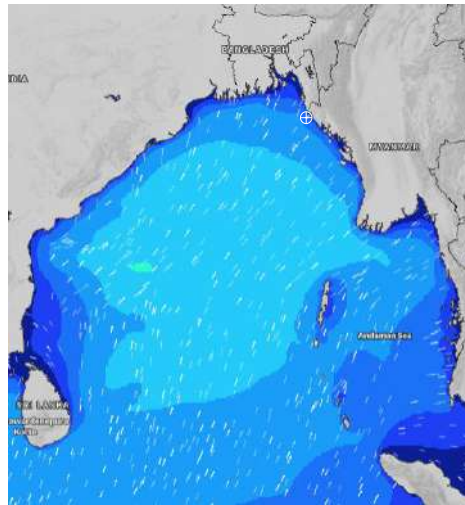
**DATE : 12 to 19 July 2024**

Date	Time	Max Wind Spd (kts)	Wind Direction	Wave Ht (m)	Sea State	Baro Pressure	Air Temp		Sea Surface Temp	Humidity (%)	Prob of Rain(%)	Sea State	Wave Ht (m)
							Max	Min					
12-07-24	0001	13	SW	1.6	4	1005	28	26	27	93%	45% (0.3 mm)	0	0
	0600	13	S	1.7	4	1002			28	95%	30% (0.2 mm)	1	0 - 0.1
	1200	15	SSW	1.6	4	1005			28	94%	95% (4.1 mm)	2	0.1 - 0.5
	1800	14	SSW	1.7	4	1002			27	91%	70% (0.7 mm)	3	0.5 - 1.25
13-07-24	0001	10	SE	1.8	4	1003	29	26	28	93%	72% (0.7 mm)	4	1.25 - 2.5
	0600	8	SE	1.8	4	1001			28	94%	81% (0.8 mm)	5	2.5 - 4.0
	1200	10	SSW	1.8	4	1002			28	89%	73% (0.6 mm)	6	4.0 - 6.0
	1800	10	SSW	2.0	4	999			28	90%	47% (0.4 mm)	7	6.0 - 9.0
14-07-24	0001	11	S	2.1	4	1001	30	27	28	93%	76% (0.6 mm)	8	9.0 - 14.0
	0600	11	SE	2.1	4	999			28	94%	57% (0.4 mm)	9	Over 14.0
	1200	16	SE	2.2	4	1000			29	86%	45% (0.3 mm)		
	1800	15	SSE	2.2	4	998			29	89%	24% (0.1 mm)		
15-07-24	0001	17	SSE	2.2	4	1001	30	26	29	90%	51% (0.4 mm)		
	0600	19	SE	2.3	4	1000			28	91%	33% (0.4 mm)		
	1200	20	SE	2.2	4	1001			29	83%	46% (0.5 mm)		
	1800	24	SSE	2.2	4	999			29	84%	35% (0.2 mm)		

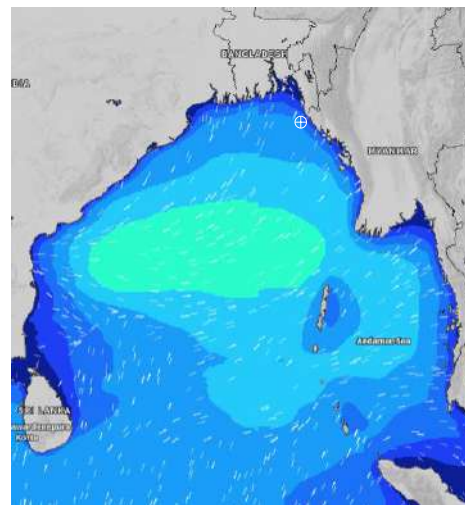
**12 July 24 Fri (Probability 98%)**



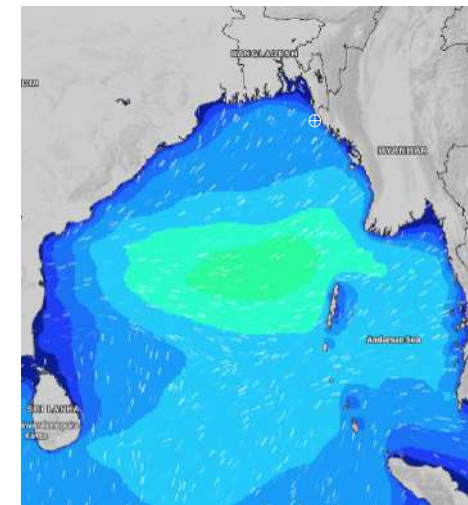
**13 July 24 Sat (Probability 95%)**



**14 July 24 Sun Probability 90%**



**15 July 24 Mon (Probability 80%)**



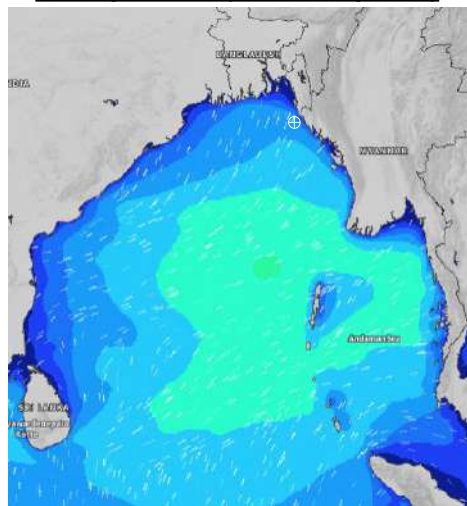
Significant wave height (m)

# MARINE WEATHER FORECAST- 15 NM WEST OF ST. MARTIN'S LIGHT HOUSE (Lat 20° 37' N, Long 092° 03' E)

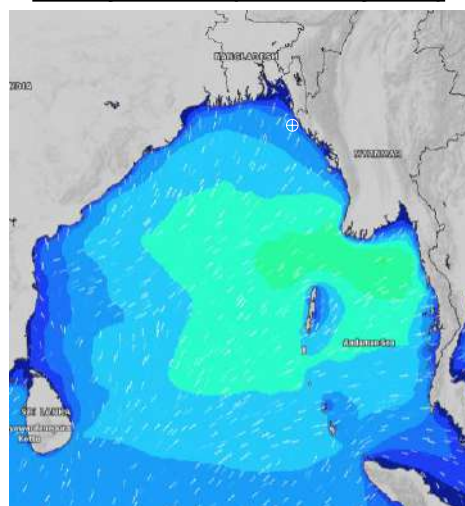
**DATE : 12 to 19 July 2024**

Date	Time	Max Wind Spd (kts)	Wind Direction	Wave Ht (m)	Sea State	Baro Pressure	Air Temp		Sea Surface Temp	Humidity (%)	Prob of Rain (%)	Sea State	Wave Ht (m)
							Max	Min					
16-07-24	0001	26	SE	2.3	4	1001	30	27	28	90%	64% (0.6 mm)	0	0
	0600	22	SE	2.4	4	1000			28	92%	75% (0.7 mm)	1	0 - 0.1
	1200	18	SE	2.3	4	1002			29	85%	43% (0.1 mm)	2	0.1 - 0.5
	1800	15	SSE	2.2	4	999			29	88%	34% (0.2 mm)	3	0.5 - 1.25
17-07-24	0001	15	SSE	2.2	4	1001	31	27	29	90%	64% (0.6 mm)	4	1.25 - 2.5
	0600	7	SE	2.1	4	1000			28	91%	75% (0.7 mm)	5	2.5 - 4.0
	1200	7	SE	2.1	4	1002			29	84%	43% (0.1 mm)	6	4.0 - 6.0
	1800	7	WSW	2.1	4	998			29	87%	34% (0.2 mm)	7	6.0 - 9.0
18-07-24	0001	7	WSW	2.1	4	1000	31	27	29	90%	64% (0.6 mm)	8	9.0 - 14.0
	0600	4	WSW	2.2	4	998			28	92%	75% (0.7 mm)	9	Over 14.0
	1200	4	SSW	2.3	4	999			28	85%	43% (0.1 mm)		
	1800	7	SSE	2.2	4	996			28	88%	34% (0.2 mm)		
19-07-24	0001	15	S	3.0	5	998	30	26	28	90%	64% (0.6 mm)		
	0600	17	S	3.1	5	997			28	92%	75% (0.7 mm)		
	1200	19	S	3.0	5	999			28	85%	43% (0.1 mm)		
	1800	16	SSE	3.0	5	996			28	88%	34% (0.2 mm)		

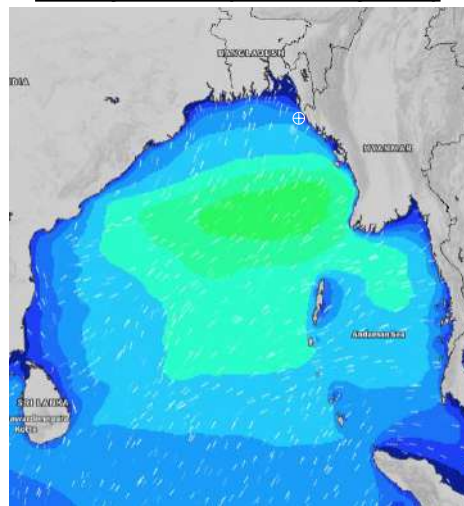
**16 July 24 Tue (Probability 70%)**



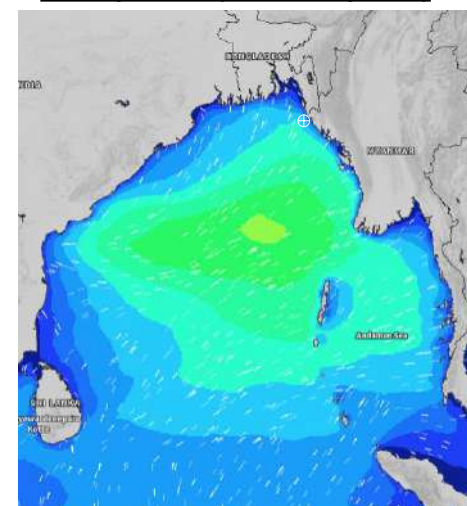
**17 July 24 Wed (Probability 60%)**



**18 July 24 Thu (Probability 50%)**



**19 July 24 Fri (Probability 50%)**



Significant wave height (m)



# MARINE WEATHER FORECAST- 40 NM ESE OF PAYRA FAIRWAY (Lat 21° 07' N, Long 090° 45' E)

**DATE : 12 to 19 July 2024**

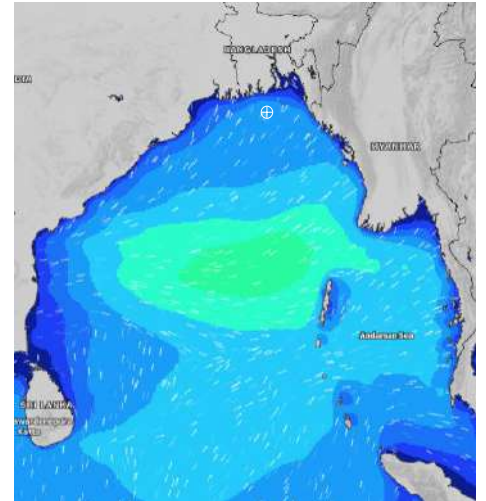
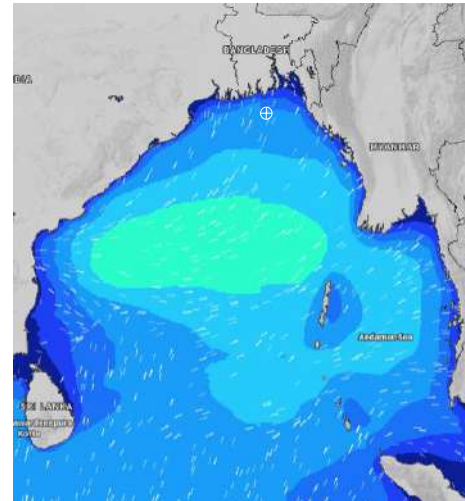
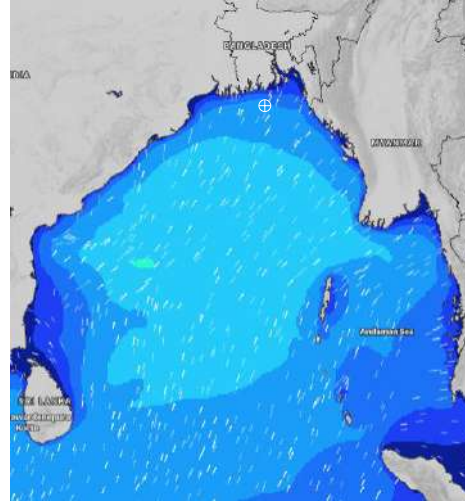
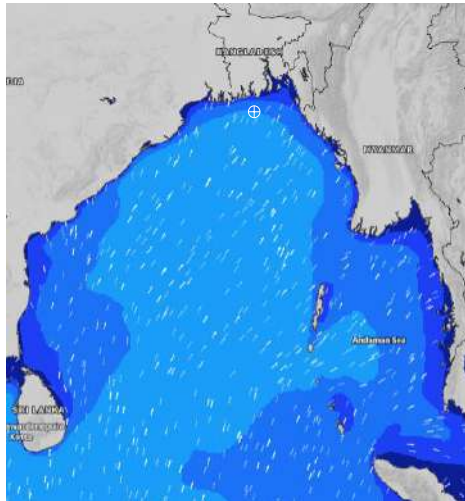
Date	Time	Max Wind Spd (kts)	Wind Direction	Wave Ht (m)	Sea State	Baro Pressure	Air Temp		Sea Surface Temp	Humidity (%)	Prob of Rain (%)	Sea State	Wave Ht (m)
							Max	Min					
12-07-24	0001	17	SSW	1.8	4	1003	29	27	28	90%	24% (0.1 mm)	0	0
	0600	20	SSW	1.8	4	1002			28	93%	20% (0.0 mm)	1	0 - 0.1
	1200	20	SSW	1.8	4	1003			29	89%	88% (0.6 mm)	2	0.1 - 0.5
	1800	19	SSW	2.0	4	1001			28	87%	37% (0.2 mm)	3	0.5 - 1.25
13-07-24	0001	17	SSW	2.0	4	1001	30	27	28	91%	60% (0.6 mm)	4	1.25 - 2.5
	0600	12	SSW	1.9	4	1000			28	92%	65% (0.5 mm)	5	2.5 - 4.0
	1200	14	SW	2.0	4	1001			29	87%	52% (0.4 mm)	6	4.0 - 6.0
	1800	11	SSW	2.1	4	998			29	88%	14% (0.0 mm)	7	6.0 - 9.0
14-07-24	0001	12	SSW	2.1	4	999	31	28	28	90%	30% (0.2 mm)	8	9.0 - 14.0
	0600	11	SSE	2.1	4	999			28	91%	42% (0.4 mm)	9	Over 14.0
	1200	16	SE	2.1	4	999			29	82%	35% (0.2 mm)		
	1800	15	SSE	2.2	4	998			29	84%	10% (0.0 mm)		
15-07-24	0001	16	SE	2.2	4	1000	31	28	29	87%	30% (0.2 mm)		
	0600	19	SE	2.2	4	1000			29	90%	42% (0.4 mm)		
	1200	17	SE	2.2	4	1000			29	82%	35% (0.2 mm)		
	1800	18	SE	2.1	4	999			29	84%	10% (0.0 mm)		

**12 July 24 Fri (Probability 98%)**

**13 July 24 Sat (Probability 95%)**

**14 July 24 Sun Probability 90%**

**15 July 24 Mon (Probability 80%)**



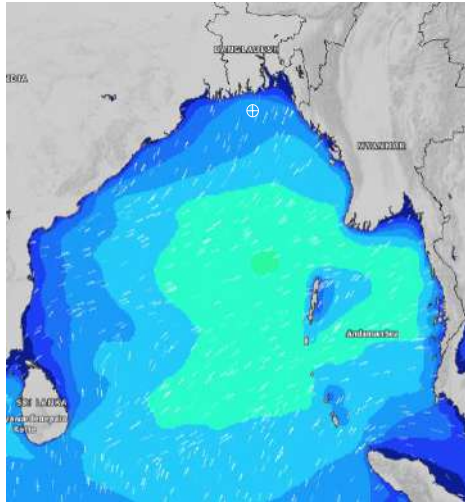
Significant wave height (m)

# MARINE WEATHER FORECAST- 40 NM ESE OF PAYRA FAIRWAY (Lat 21° 07' N, Long 090° 45' E)

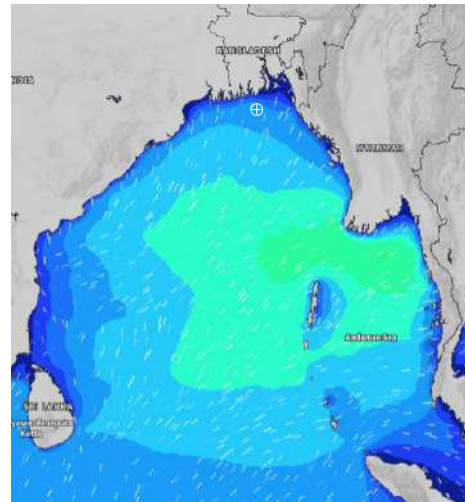
**DATE : 12 to 19 July 2024**

Date	Time	Max Wind Spd (kts)	Wind Direction	Wave Ht (m)	Sea State	Baro Pressure	Air Temp		Sea Surface Temp	Humidity (%)	Prob of Rain (%)	Sea State	Wave Ht (m)
							Max	Min					
16-07-24	0001	22	SE	2.1	4	1000	31	28	29	89%	61% (0.6 mm)	0	0
	0600	25	SE	2.4	4	1000			28	90%	44% (0.4 mm)	1	0 - 0.1
	1200	20	SE	2.3	4	1000			29	82%	43% (0.4 mm)	2	0.1 - 0.5
	1800	16	SSE	2.2	4	999			29	84%	24% (0.1 mm)	3	0.5 - 1.25
17-07-24	0001	10	S	2.2	4	1001	31	28	29	90%	61% (0.6 mm)	4	1.25 - 2.5
	0600	7	SSE	2.2	4	1000			28	91%	44% (0.4 mm)	5	2.5 - 4.0
	1200	7	S	2.1	4	1000			29	85%	43% (0.4 mm)	6	4.0 - 6.0
	1800	7	SSW	2.2	4	998			29	86%	24% (0.1 mm)	7	6.0 - 9.0
18-07-24	0001	7	SSW	2.2	4	999	31	28	28	88%	61% (0.6 mm)	8	9.0 - 14.0
	0600	8	SE	2.2	4	998			28	90%	44% (0.4 mm)	9	Over 14.0
	1200	9	SE	2.2	4	998			29	82%	43% (0.4 mm)		
	1800	13	SE	2.4	4	996			29	86%	24% (0.1 mm)		
19-07-24	0001	15	SE	2.8	5	996	31	28	29	88%	61% (0.6 mm)		
	0600	17	ESE	2.9	5	996			28	90%	44% (0.4 mm)		
	1200	20	SE	2.9	5	996			29	82%	43% (0.4 mm)		
	1800	16	SSE	2.9	5	995			29	86%	24% (0.1 mm)		

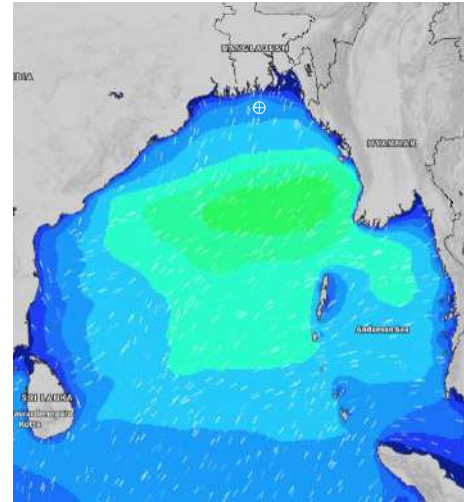
**16 July 24 Tue (Probability 70%)**



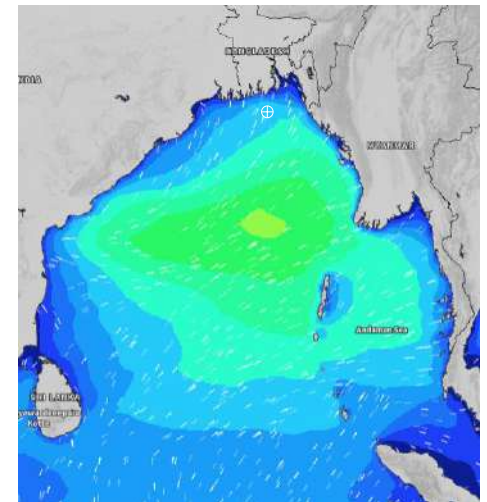
**17 July 24 Wed (Probability 60%)**



**18 July 24 Thu (Probability 50%)**



**19 July 24 Fri (Probability 50%)**



Significant wave height (m)

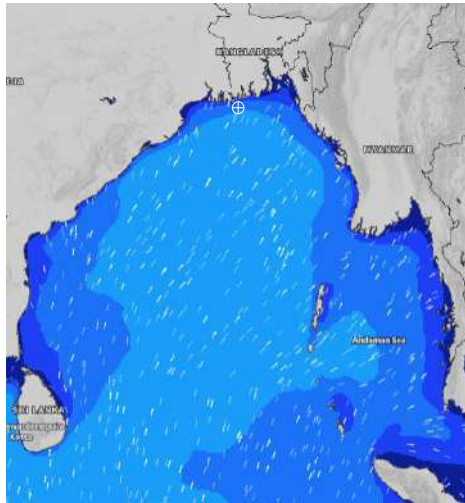


# MARINE WEATHER FORECAST- 10 NM SOUTH OF MONGLA FAIRWAY (Lat 21° 16' N, Long 089° 34' E)

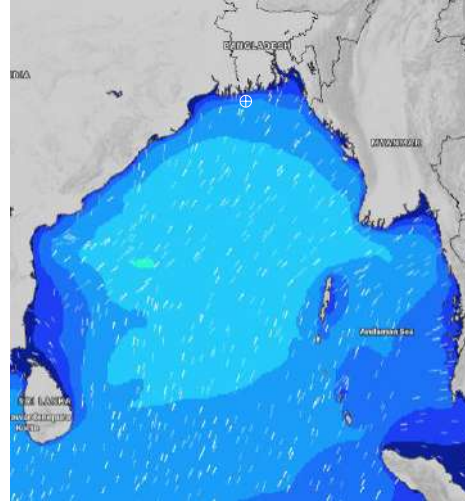
**DATE : 12 to 19 July 2024**

Date	Time	Max Wind Spd (kts)	Wind Direction	Wave Ht (m)	Sea State	Baro Pressure	Air Temp		Sea Surface Temp	Humidity (%)	Prob of Rain (%)	Sea State	Wave Ht (m)
							Max	Min					
12-07-24	0001	19	SSW	1.8	4	1002	30	27	29	92%	32% (0.2 mm)	0	0
	0600	22	SSW	1.9	4	1000			29	94%	24% (0.1 mm)	1	0 - 0.1
	1200	19	SSW	1.9	4	1002			29	88%	98% (2.1 mm)	2	0.1 - 0.5
	1800	18	SSW	1.9	4	1000			29	90%	49% (0.4 mm)	3	0.5 - 1.25
13-07-24	0001	20	SSW	1.9	4	1000	31	27	29	94%	55% (0.4 mm)	4	1.25 - 2.5
	0600	14	SW	1.9	4	999			29	97%	53% (0.4 mm)	5	2.5 - 4.0
	1200	14	SSW	2.0	4	1000			29	85%	72% (0.7 mm)	6	4.0 - 6.0
	1800	12	SSW	2.0	4	997			29	84%	20% (0.0 mm)	7	6.0 - 9.0
14-07-24	0001	12	SSW	2.0	4	999	32	28	29	93%	31% (0.2 mm)	8	9.0 - 14.0
	0600	8	SE	2.0	4	998			29	94%	39% (0.3 mm)	9	Over 14.0
	1200	10	SE	2.0	4	998			29	79%	69% (0.6 mm)		
	1800	12	SE	2.0	4	997			29	81%	14% (0.0 mm)		
15-07-24	0001	16	SE	2.1	4	999	32	28	29	89%	24% (0.1 mm)		
	0600	13	SE	2.1	4	999			29	92%	38% (0.1 mm)		
	1200	14	ESE	2.0	4	1000			29	76%	44% (0.3 mm)		
	1800	16	ESE	1.9	4	998			29	80%	10% (0.0 mm)		

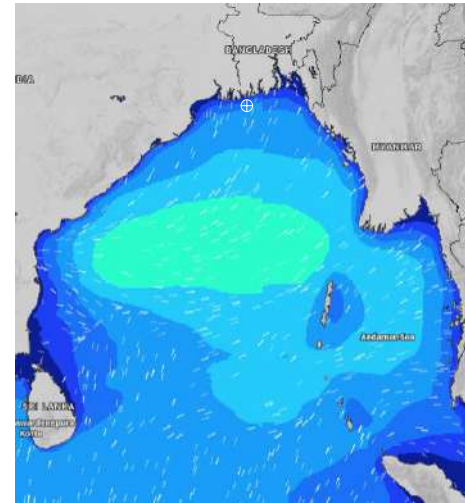
**12 July 24 Fri (Probability 98%)**



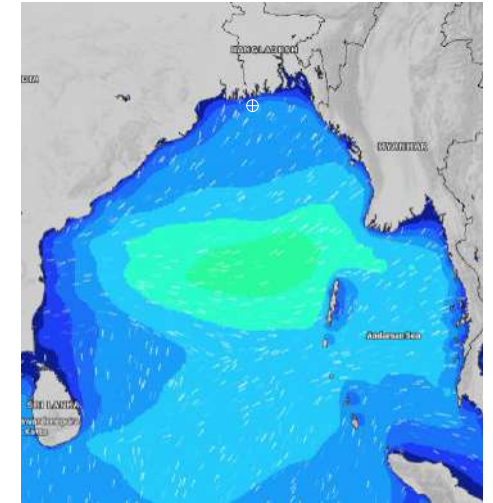
**13 July 24 Sat (Probability 95%)**



**14 July 24 Sun Probability 90%**



**15 July 24 Mon (Probability 80%)**



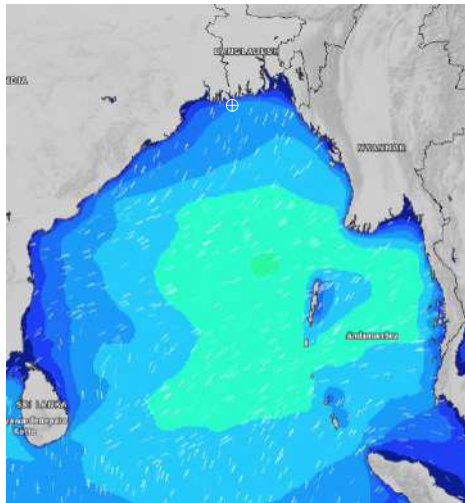
Significant wave height (m)

# MARINE WEATHER FORECAST- 10 NM SOUTH OF MONGLA FAIRWAY (Lat 21° 16' N, Long 089° 34' E)

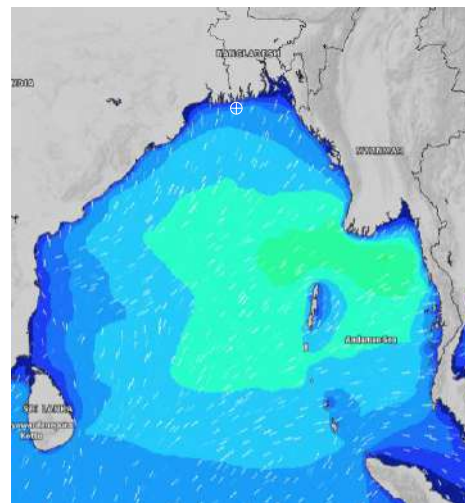
**DATE : 12 to 19 July 2024**

Date	Time	Max Wind Spd (kts)	Wind Direction	Wave Ht (m)	Sea State	Baro Pressure	Air Temp		Sea Surface Temp	Humidity (%)	Prob of Rain (%)	Sea State	Wave Ht (m)
							Max	Min					
16-07-24	0001	17	ESE	1.8	4	1000	32	28	29	89%	45% (0.7 mm)	0	0
	0600	20	ESE	2.0	4	999			29	91%	32% (0.4 mm)	1	0 - 0.1
	1200	19	ESE	2.2	4	1000			29	76%	24% (0.0 mm)	2	0.1 - 0.5
	1800	16	SSE	2.1	4	998			29	79%	24% (0.0 mm)	3	0.5 - 1.25
17-07-24	0001	14	S	2.0	4	1000	32	27	29	89%	45% (0.7 mm)	4	1.25 - 2.5
	0600	9	SSE	2.1	4	999			29	91%	32% (0.4 mm)	5	2.5 - 4.0
	1200	10	SSE	2.1	4	999			29	76%	24% (0.0 mm)	6	4.0 - 6.0
	1800	7	S	2.2	4	998			29	79%	24% (0.0 mm)	7	6.0 - 9.0
18-07-24	0001	7	SSW	2.2	4	999	33	28	29	89%	45% (0.7 mm)	8	9.0 - 14.0
	0600	8	ESE	2.1	4	997			29	91%	32% (0.4 mm)	9	Over 14.0
	1200	12	ESE	2.1	4	997			29	76%	24% (0.0 mm)		
	1800	14	ESE	2.2	4	995			29	79%	24% (0.0 mm)		
19-07-24	0001	15	ESE	2.5	4	996	33	27	29	89%	45% (0.7 mm)		
	0600	16	E	2.5	4	996			29	91%	32% (0.4 mm)		
	1200	19	E	2.6	5	995			29	76%	24% (0.0 mm)		
	1800	18	SE	2.6	5	994			29	79%	24% (0.0 mm)		

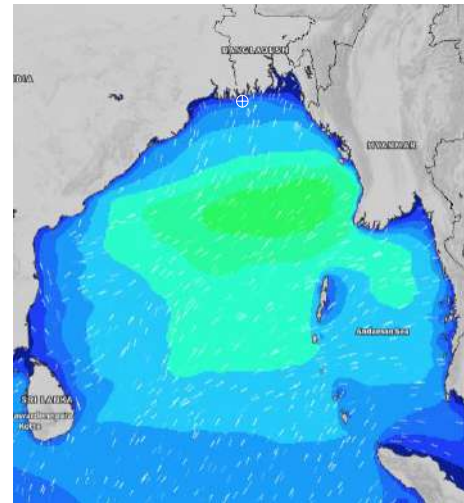
**16 July 24 Tue (Probability 70%)**



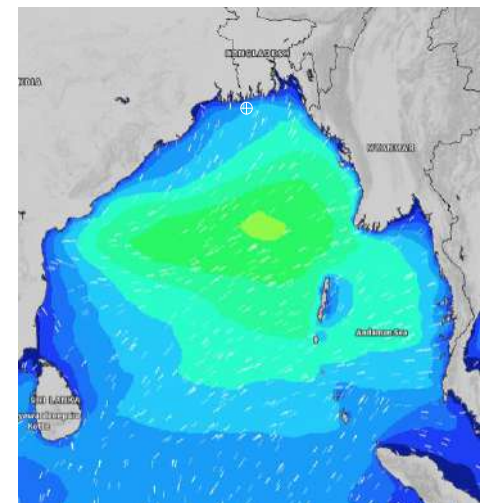
**17 July 24 Wed (Probability 60%)**



**18 July 24 Thu (Probability 50%)**



**19 July 24 Fri (Probability 50%)**

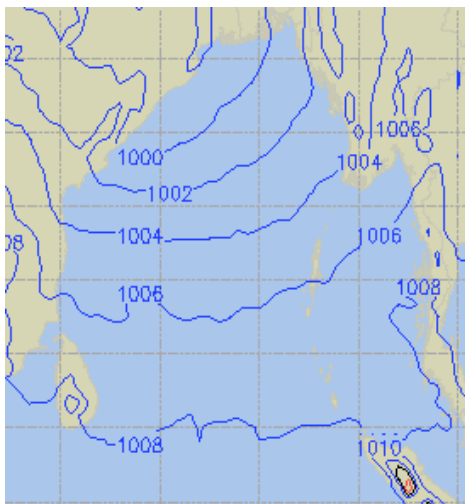


Significant wave height (m)

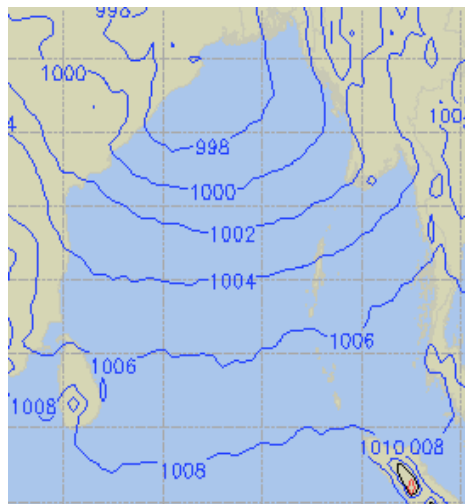


# PREDICTED SURFACE PRESSURE FORECAST (12 to 18 July 2024)

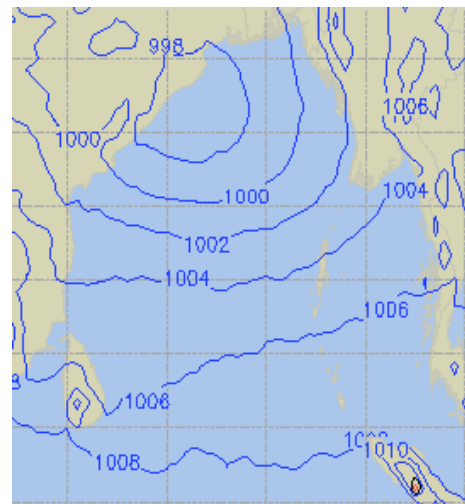
**12 July 24 Fri (Probability 98%)**



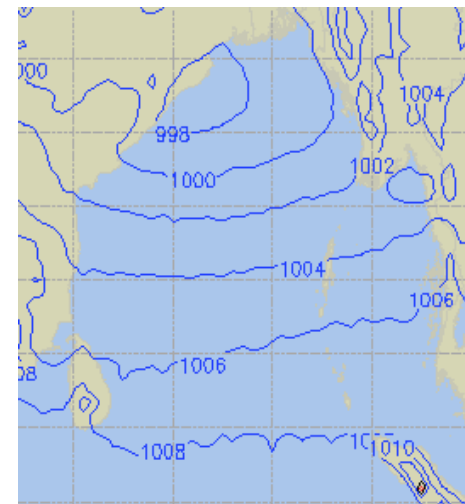
**13 July 24 Sat (Probability 95%)**



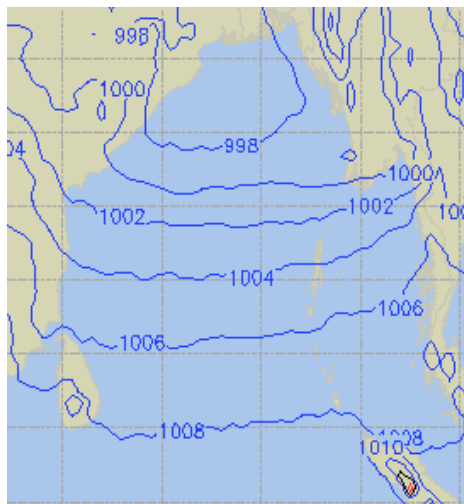
**14 July 24 Sun (Probability 90%)**



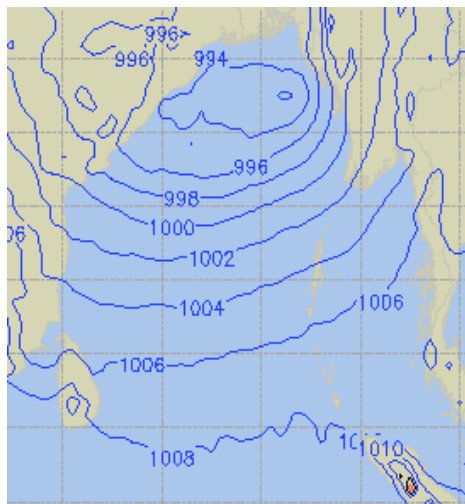
**15 July 24 Mon (Probability 80%)**



**16 July 24 Tue (Probability 70%)**



**17 July 24 Wed (Probability 60%)**



**18 July 24 Thu (Probability 50%)**

