

MARINE WEATHER FORECAST- NEAR AUTHORITY BUOY (Lat 22° 12' N, Long 091° 38' E)

DATE : 12 to 19 May 2024

Date	Time	Max Wind Spd (kts)	Wind Direction	Wave Ht (m)	Sea State	Baro Pressure	Air Temp		Sea Surface Temp	Humidity (%)	Prob of Rain (%)	Sea State	Wave Ht (m)
							Max	Min					
12-05-24	0001	3	E	0.1	1	1011	34	24	29	81%	15% (0.0 mm)	0	0
	0600	4	ENE	0.1	1	1010			28	94%	13% (0.0 mm)	1	0 - 0.1
	1200	7	W	0.1	1	1011			29	72%	19% (0.0 mm)	2	0.1 - 0.5
	1800	9	WSW	0.1	1	1007			29	83%	19% (0.0 mm)	3	0.5 - 1.25
13-05-24	0001	5	SSW	0.1	1	1009	34	24	29	86%	14% (0.0 mm)	4	1.25 - 2.5
	0600	5	SE	0.1	1	1010			28	92%	16% (0.0 mm)	5	2.5 - 4.0
	1200	8	WSW	0.1	1	1011			29	74%	13% (0.0 mm)	6	4.0 - 6.0
	1800	10	WSW	0.2	2	1007			29	83%	19% (0.0 mm)	7	6.0 - 9.0
14-05-24	0001	6	SSW	0.1	1	1009	34	24	29	86%	12% (0.0 mm)	8	9.0 - 14.0
	0600	5	S	0.1	1	1009			28	92%	13% (0.0 mm)	9	Over 14.0
	1200	6	W	0.1	1	1010			29	75%	15% (0.0 mm)		
	1800	13	WSW	0.2	2	1007			29	83%	18% (0.0 mm)		
15-05-24	0001	6	SW	0.1	1	1009	34	24	29	86%	15% (0.0 mm)		
	0600	5	S	0.1	1	1010			28	93%	14% (0.0 mm)		
	1200	8	SW	0.1	1	1011			29	74%	18% (0.0 mm)		
	1800	11	WSW	0.2	2	1007			29	81%	16% (0.0 mm)		

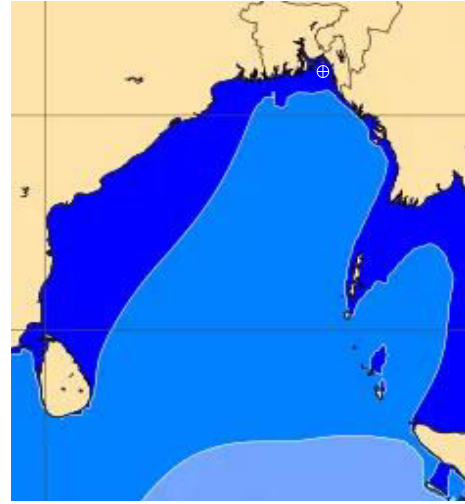
12 May 24 Sun (Probability 98%)



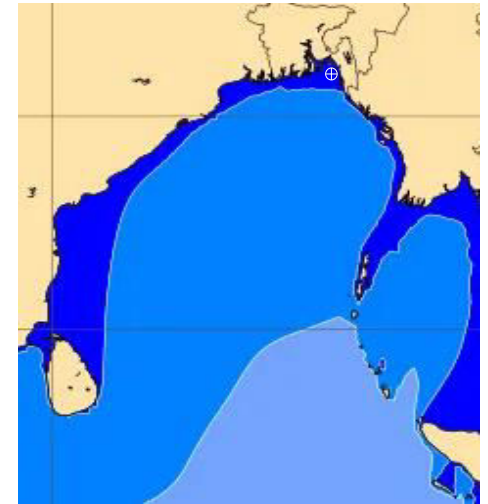
13 May 24 Mon (Probability 95%)



14 May 24 Tue (Probability 90%)



15 May 24 Wed (Probability 80%)



Significant wave height (m)

MARINE WEATHER FORECAST- NEAR AUTHORITY BUOY (Lat 22° 12' N, Long 091° 38' E)

DATE : 12 to 19 May 2024

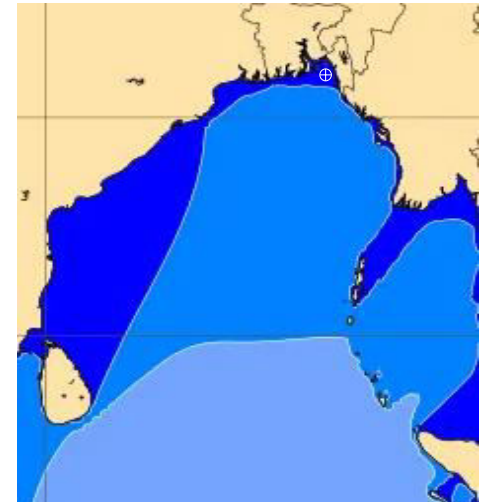
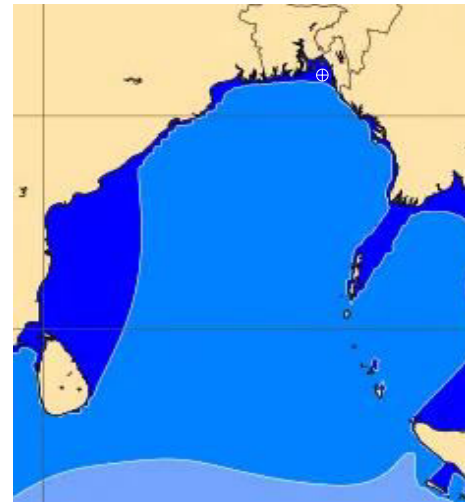
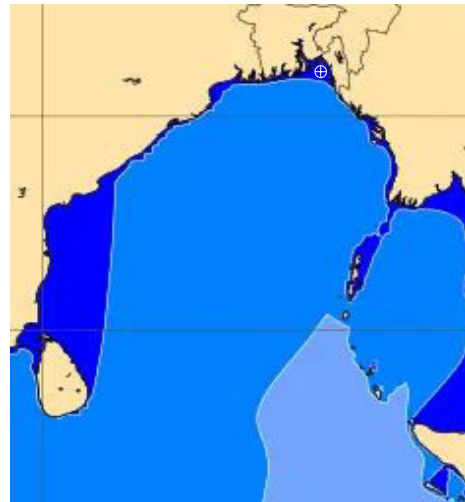
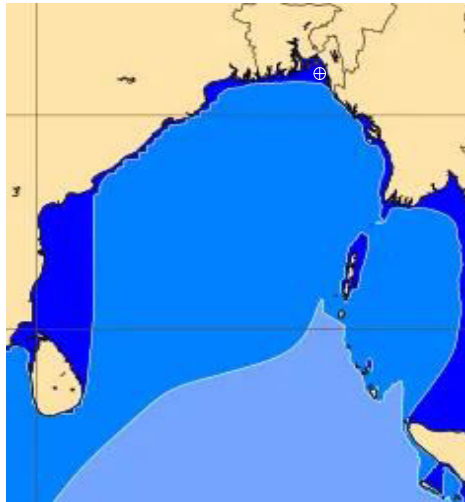
Date	Time	Max Wind Spd (kts)	Wind Direction	Wave Ht (m)	Sea State	Baro Pressure	Air Temp		Sea Surface Temp	Humidity (%)	Prob of Rain (%)	Sea State	Wave Ht (m)
							Max	Min					
16-05-24	0001	9	S	0.1	1	1010	34	24	29	83%	14% (0.0 mm)	0	0
	0600	6	SSW	0.1	1	1011			28	92%	12% (0.0 mm)	1	0 - 0.1
	1200	7	SW	0.1	1	1010			29	76%	16% (0.0 mm)	2	0.1 - 0.5
	1800	15	WSW	0.3	2	1007			28	82%	18% (0.0 mm)	3	0.5 - 1.25
17-05-24	0001	12	SSE	0.2	2	1008	34	24	29	83%	11% (0.0 mm)	4	1.25 - 2.5
	0600	12	S	0.3	2	1008			28	94%	15% (0.0 mm)	5	2.5 - 4.0
	1200	14	SSW	0.3	2	1009			29	72%	16% (0.0 mm)	6	4.0 - 6.0
	1800	17	SSW	0.3	2	1005			28	85%	19% (0.0 mm)	7	6.0 - 9.0
18-05-24	0001	19	SSE	0.3	2	1006	34	24	29	81%	15% (0.0 mm)	8	9.0 - 14.0
	0600	18	SSE	0.4	2	1007			28	92%	14% (0.0 mm)	9	Over 14.0
	1200	21	SSW	0.4	2	1003			29	73%	13% (0.0 mm)		
	1800	20	S	0.4	2	1002			28	85%	19% (0.0 mm)		
19-05-24	0001	22	SSE	0.4	2	1004	34	24	29	80%	15% (0.0 mm)		
	0600	21	SE	0.4	2	1004			28	92%	16% (0.0 mm)		
	1200	20	SE	0.4	2	1005			29	76%	14% (0.0 mm)		
	1800	23	SSW	0.4	2	1003			28	83%	16% (0.0 mm)		

16 May 24 Thu (Probability 70%)

17 May 24 Fri (Probability 60%)

18 May 24 Sat (Probability 50%)

19 May 24 Sun (Probability 50%)



Significant wave height (m)

MARINE WEATHER FORECAST- 20 NM WEST OF ELEPHANT POINT (Lat 21° 10' N, Long 091° 42' E)

DATE : 12 to 19 May 2024

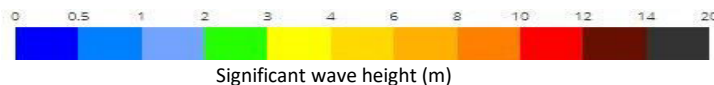
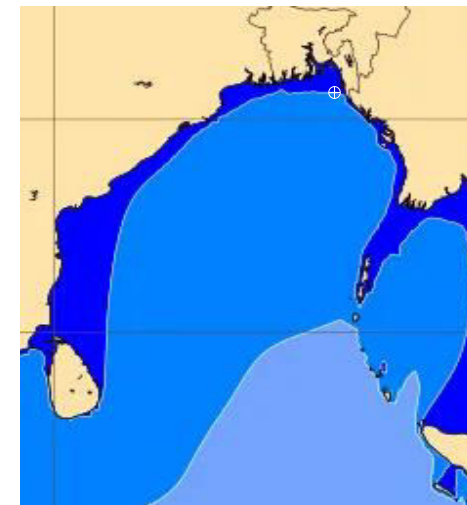
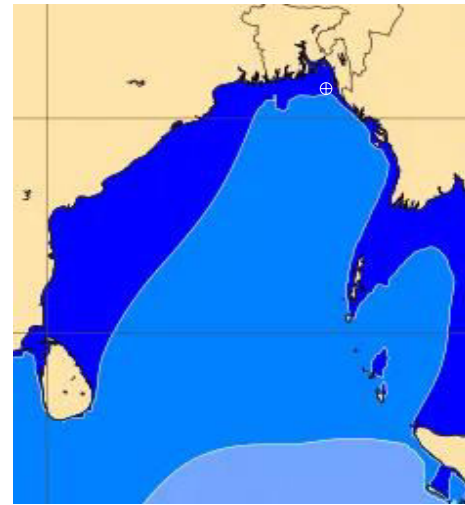
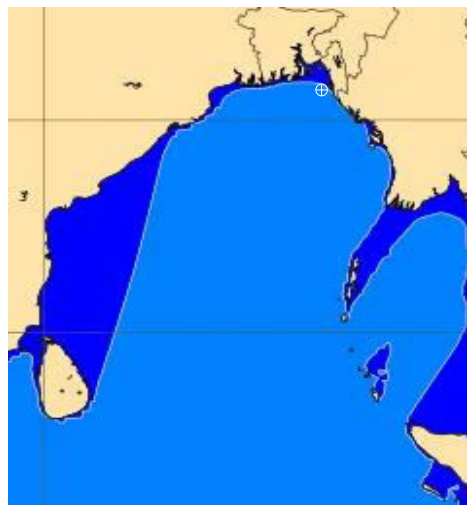
Date	Time	Max Wind Spd (kts)	Wind Direction	Wave Ht (m)	Sea State	Baro Pressure	Air Temp		Sea Surface Temp	Humidity (%)	Prob of Rain (%)	Sea State	Wave Ht (m)
							Max	Min					
12-05-24	0001	4	WNW	0.9	3	1012	33	24	29	84%	15% (0.5 mm)	0	0
	0600	3	NNE	0.9	3	1011			28	92%	13% (0.0 mm)	1	0 - 0.1
	1200	7	WNW	0.8	3	1011			29	76%	12% (0.0 mm)	2	0.1 - 0.5
	1800	11	W	0.9	3	1007			29	83%	17% (0.0 mm)	3	0.5 - 1.25
13-05-24	0001	5	WNW	0.7	3	1009	34	24	29	84%	15% (0.0 mm)	4	1.25 - 2.5
	0600	4	W	0.6	3	1010			28	92%	16% (0.0 mm)	5	2.5 - 4.0
	1200	8	WNW	0.7	3	1011			29	75%	13% (0.0 mm)	6	4.0 - 6.0
	1800	13	W	0.9	3	1007			29	86%	19% (0.0 mm)	7	6.0 - 9.0
14-05-24	0001	5	WNW	0.8	3	1009	34	24	29	83%	15% (0.0 mm)	8	9.0 - 14.0
	0600	6	W	0.6	3	1006			28	94%	16% (0.0 mm)	9	Over 14.0
	1200	6	W	0.7	3	1010			29	71%	12% (0.0 mm)		
	1800	14	W	0.8	3	1007			29	82%	18% (0.0 mm)		
15-05-24	0001	6	WSW	0.7	3	1009	34	24	29	86%	15% (0.0 mm)		
	0600	5	WSW	0.6	3	1010			28	93%	16% (0.0 mm)		
	1200	7	SW	0.6	3	1011			29	75%	15% (0.0 mm)		
	1800	12	WSW	0.8	3	1007			29	84%	19% (0.0 mm)		

12 May 24 Sun (Probability 98%)

13 May 24 Mon (Probability 95%)

14 May 24 Tue (Probability 90%)

15 May 24 Wed (Probability 80%)



Significant wave height (m)

MARINE WEATHER FORECAST- 20 NM WEST OF ELEPHANT POINT (Lat 21° 10' N, Long 091° 42' E)

DATE : 12 to 19 May 2024

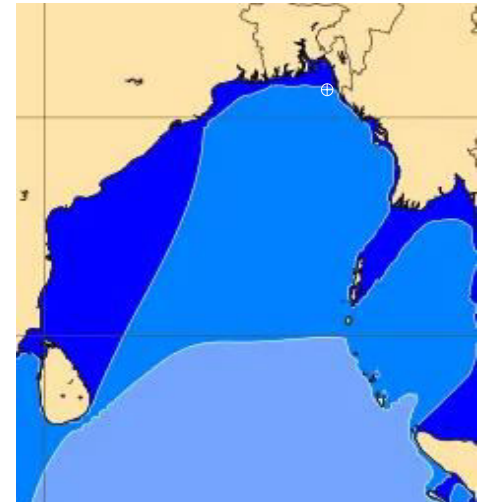
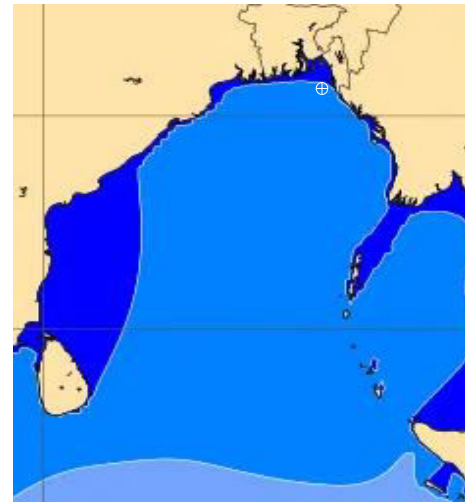
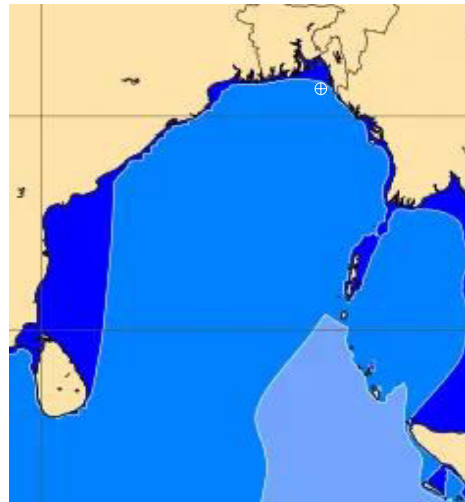
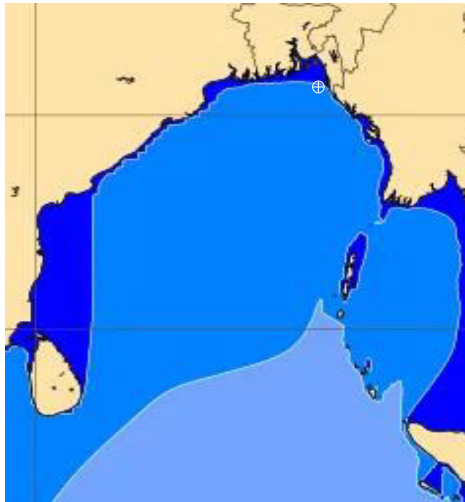
Date	Time	Max Wind Spd (kts)	Wind Direction	Wave Ht (m)	Sea State	Baro Pressure	Air Temp		Sea Surface Temp	Humidity (%)	Prob of Rain (%)	Sea State	Wave Ht (m)
							Max	Min					
16-05-24	0001	5	WSW	0.7	3	1010	34	24	29	81%	15% (0.0 mm)	0	0
	0600	6	SW	0.6	3	1009			28	92%	13% (0.0 mm)	1	0 - 0.1
	1200	7	W	0.6	3	1010			29	73%	16% (0.0 mm)	2	0.1 - 0.5
	1800	15	WSW	0.8	3	1007			28	85%	19% (0.0 mm)	3	0.5 - 1.25
17-05-24	0001	7	SSW	0.8	3	1008	34	24	29	82%	15% (0.0 mm)	4	1.25 - 2.5
	0600	9	SW	0.8	3	1008			28	94%	14% (0.0 mm)	5	2.5 - 4.0
	1200	11	SSW	0.8	3	1009			29	73%	16% (0.0 mm)	6	4.0 - 6.0
	1800	15	SW	1.0	3	1005			28	86%	18% (0.0 mm)	7	6.0 - 9.0
18-05-24	0001	17	SSE	1.1	3	1006	34	24	29	82%	14% (0.0 mm)	8	9.0 - 14.0
	0600	13	SSW	1.1	3	1007			28	94%	15% (0.0 mm)	9	Over 14.0
	1200	16	S	1.2	3	1006			29	71%	18% (0.0 mm)		
	1800	17	SSW	1.3	4	1003			28	83%	14% (0.0 mm)		
19-05-24	0001	18	S	1.3	4	1004	34	24	29	82%	15% (0.0 mm)		
	0600	15	S	1.3	4	1005			28	96%	16% (0.0 mm)		
	1200	16	SW	1.3	4	1004			29	75%	18% (0.0 mm)		
	1800	18	SSW	1.3	4	1003			28	84%	17% (0.0 mm)		

16 May 24 Thu (Probability 70%)

17 May 24 Fri (Probability 60%)

18 May 24 Sat (Probability 50%)

19 May 24 Sun (Probability 50%)



0 0.5 1 2 3 4 6 8 10 12 14 20



Significant wave height (m)

MARINE WEATHER FORECAST- 15 NM WEST OF ST. MARTIN'S LIGHT HOUSE (Lat 20° 37'N, Long 092° 03'E)

DATE : 12 to 19 May 2024

Date	Time	Max Wind Spd (kts)	Wind Direction	Wave Ht (m)	Sea State	Baro Pressure	Air Temp		Sea Surface Temp	Humidity (%)	Prob of Rain(%)	Sea State	Wave Ht (m)
							Max	Min					
12-05-24	0001	8	WNW	1.1	3	1012	34	24	29	81%	13% (0.0 mm)	0	0
	0600	4	NE	1.0	3	1010			28	95%	15% (0.0 mm)	1	0 - 0.1
	1200	5	NW	1.0	3	1012			29	73%	17% (0.0 mm)	2	0.1 - 0.5
	1800	12	WNW	1.1	3	1007			29	86%	18% (0.0 mm)	3	0.5 - 1.25
13-05-24	0001	6	WNW	0.9	3	1010	34	24	29	82%	16% (0.0 mm)	4	1.25 - 2.5
	0600	5	WNW	0.8	3	1009			28	94%	15% (0.0 mm)	5	2.5 - 4.0
	1200	8	WNW	0.8	3	1011			29	73%	19% (0.0 mm)	6	4.0 - 6.0
	1800	13	NW	0.9	3	1007			29	82%	16% (0.0 mm)	7	6.0 - 9.0
14-05-24	0001	6	WNW	0.8	3	1009	34	24	29	83%	15% (0.0 mm)	8	9.0 - 14.0
	0600	5	WNW	0.7	3	1010			28	96%	13% (0.0 mm)	9	Over 14.0
	1200	4	WNW	0.7	3	1008			29	70%	15% (0.0 mm)		
	1800	15	WNW	0.9	3	1007			29	82%	18% (0.0 mm)		
15-05-24	0001	7	WNW	0.7	3	1009	34	24	29	85%	14% (0.0 mm)		
	0600	7	WNW	0.8	3	1009			28	94%	15% (0.0 mm)		
	1200	6	NW	0.8	3	1010			29	73%	16% (0.0 mm)		
	1800	12	WNW	0.9	3	1007			29	85%	17% (0.0 mm)		

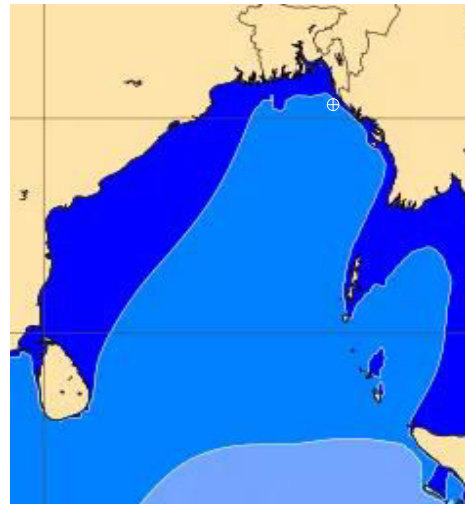
12 May 24 Sun (Probability 98%)



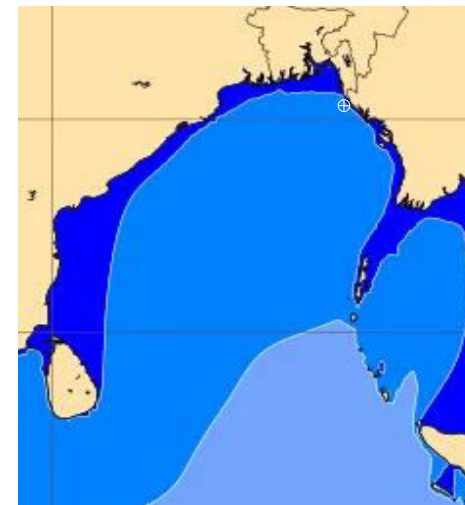
13 May 24 Mon (Probability 95%)



14 May 24 Tue (Probability 90%)



15 May 24 Wed (Probability 80%)



Significant wave height (m)

MARINE WEATHER FORECAST- 15 NM WEST OF ST. MARTIN'S LIGHT HOUSE (Lat 20° 37' N, Long 092° 03' E)

DATE : 12 to 19 May 2024

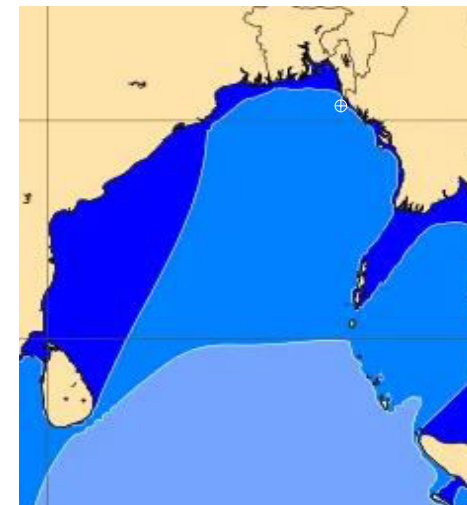
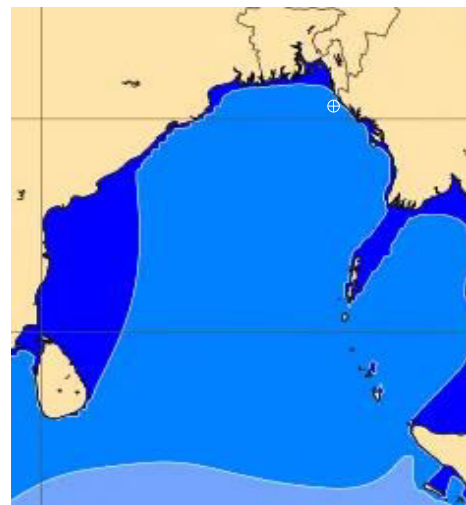
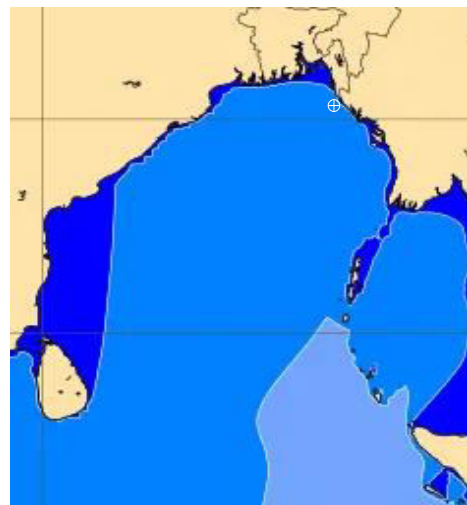
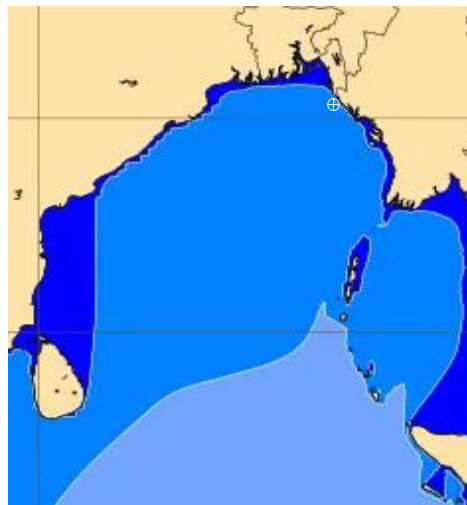
Date	Time	Max Wind Spd (kts)	Wind Direction	Wave Ht (m)	Sea State	Baro Pressure	Air Temp		Sea Surface Temp	Humidity (%)	Prob of Rain (%)	Sea State	Wave Ht (m)
							Max	Min					
16-05-24	0001	7	W	0.8	3	1010	34	24	29	82%	15% (0.0 mm)	0	0
	0600	6	W	0.8	3	1009			28	96%	12% (0.0 mm)	1	0 - 0.1
	1200	8	W	0.8	3	1011			29	73%	14% (0.0 mm)	2	0.1 - 0.5
	1800	15	W	0.9	3	1007			28	84%	17% (0.0 mm)	3	0.5 - 1.25
17-05-24	0001	8	W	0.9	3	1009	34	24	29	81%	15% (0.0 mm)	4	1.25 - 2.5
	0600	8	SW	0.9	3	1007			28	92%	16% (0.0 mm)	5	2.5 - 4.0
	1200	9	WSW	0.9	3	1009			29	75%	13% (0.0 mm)	6	4.0 - 6.0
	1800	12	WSW	1.1	3	1006			28	83%	15% (0.0 mm)	7	6.0 - 9.0
18-05-24	0001	11	SW	1.1	3	1007	34	24	29	86%	16% (0.0 mm)	8	9.0 - 14.0
	0600	12	SSW	1.3	4	1005			28	90%	15% (0.0 mm)	9	Over 14.0
	1200	11	SSW	1.3	4	1008			29	71%	14% (0.0 mm)		
	1800	13	SSW	1.4	4	1004			28	82%	18% (0.0 mm)		
19-05-24	0001	15	S	1.5	4	1005	34	24	29	85%	15% (0.0 mm)		
	0600	14	SSW	1.4	4	1004			28	94%	14% (0.0 mm)		
	1200	12	SSW	1.4	4	1005			29	73%	16% (0.0 mm)		
	1800	15	SSW	1.5	4	1003			28	86%	19% (0.0 mm)		

16 May 24 Thu (Probability 70%)

17 May 24 Fri (Probability 60%)

18 May 24 Sat (Probability 50%)

19 May 24 Sun (Probability 50%)



0 0.5 1 2 3 4 6 8 10 12 14 20



Significant wave height (m)

MARINE WEATHER FORECAST- 40 NM ESE OF PAYRA FAIRWAY (Lat 21° 07' N, Long 090° 45' E)

DATE : 12 to 19 May 2024

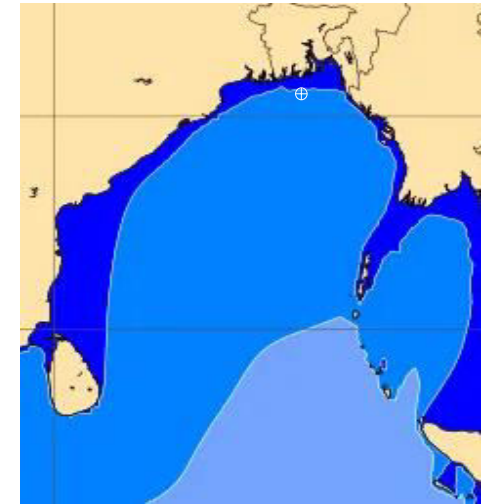
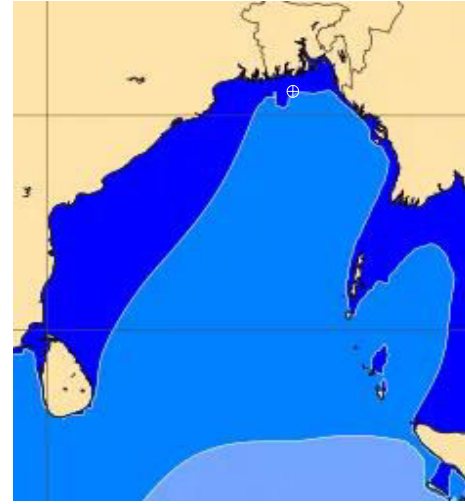
Date	Time	Max Wind Spd (kts)	Wind Direction	Wave Ht (m)	Sea State	Baro Pressure	Air Temp		Sea Surface Temp	Humidity (%)	Prob of Rain (%)	Sea State	Wave Ht (m)
							Max	Min					
12-05-24	0001	7	SSW	1.2	3	1011	34	24	29	84%	15% (0.0 mm)	0	0
	0600	5	S	1.2	3	1011			28	92%	14% (0.0 mm)	1	0 - 0.1
	1200	4	WSW	1.1	3	1012			29	76%	16% (0.0 mm)	2	0.1 - 0.5
	1800	5	WSW	1.0	3	1008			29	83%	18% (0.0 mm)	3	0.5 - 1.25
13-05-24	0001	10	WSW	1.0	3	1009	34	24	29	85%	14% (0.0 mm)	4	1.25 - 2.5
	0600	5	SW	1.0	3	1010			28	94%	16% (0.0 mm)	5	2.5 - 4.0
	1200	6	W	0.9	3	1011			29	75%	19% (0.0 mm)	6	4.0 - 6.0
	1800	7	WSW	0.9	3	1008			29	86%	15% (0.0 mm)	7	6.0 - 9.0
14-05-24	0001	11	WSW	1.0	3	1009	34	24	29	82%	16% (0.0 mm)	8	9.0 - 14.0
	0600	5	WSW	0.8	3	1009			28	94%	15% (0.0 mm)	9	Over 14.0
	1200	6	WSW	0.8	3	1010			29	75%	14% (0.0 mm)		
	1800	7	WSW	0.8	3	1007			29	86%	18% (0.0 mm)		
15-05-24	0001	14	WSW	0.9	3	1009	34	24	29	83%	16% (0.0 mm)		
	0600	9	WSW	0.8	3	1010			28	95%	15% (0.0 mm)		
	1200	6	SSW	0.8	3	1011			29	74%	19% (0.0 mm)		
	1800	8	WSW	0.8	3	1007			29	86%	17% (0.0 mm)		

12 May 24 Sun (Probability 98%)

13 May 24 Mon (Probability 95%)

14 May 24 Tue (Probability 90%)

15 May 24 Wed (Probability 80%)



0 0.5 1 2 3 4 6 8 10 12 14 20



Significant wave height (m)

MARINE WEATHER FORECAST- 40 NM ESE OF PAYRA FAIRWAY (Lat 21° 07' N, Long 090° 45' E)

DATE : 12 to 19 May 2024

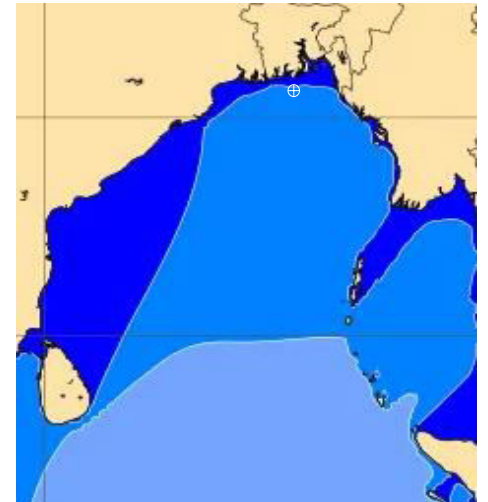
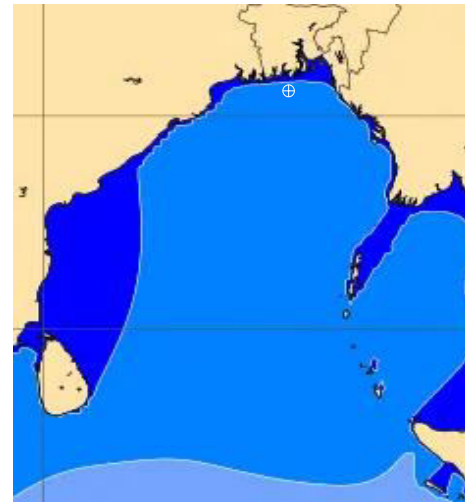
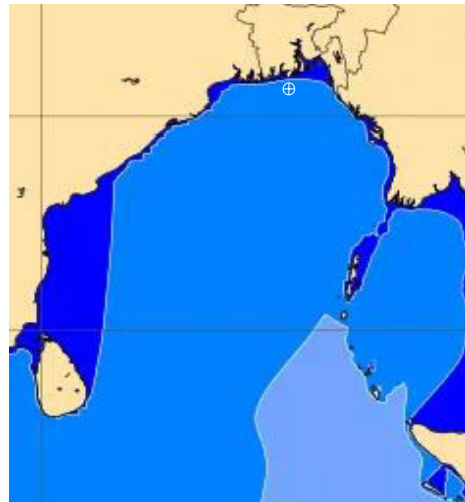
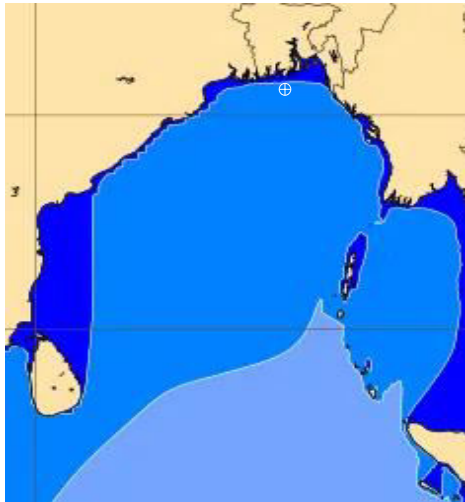
Date	Time	Max Wind Spd (kts)	Wind Direction	Wave Ht (m)	Sea State	Baro Pressure	Air Temp		Sea Surface Temp	Humidity (%)	Prob of Rain (%)	Sea State	Wave Ht (m)
							Max	Min					
16-05-24	0001	11	SW	0.9	3	1009	34	24	29	84%	17% (0.0 mm)	0	0
	0600	10	SW	0.9	3	1010			28	92%	15% (0.0 mm)	1	0 - 0.1
	1200	9	SW	1.0	3	1010			29	76%	14% (0.0 mm)	2	0.1 - 0.5
	1800	13	WSW	1.1	3	1007			29	83%	16% (0.0 mm)	3	0.5 - 1.25
17-05-24	0001	13	SW	1.2	3	1007	34	24	29	85%	10% (0.0 mm)	4	1.25 - 2.5
	0600	14	SW	1.3	4	1008			28	91%	15% (0.0 mm)	5	2.5 - 4.0
	1200	15	SW	1.3	4	1009			29	73%	12% (0.0 mm)	6	4.0 - 6.0
	1800	17	SW	1.4	4	1005			29	82%	13% (0.0 mm)	7	6.0 - 9.0
18-05-24	0001	25	S	1.5	4	1005	34	24	29	85%	16% (0.0 mm)	8	9.0 - 14.0
	0600	18	SSW	1.4	4	1006			28	94%	19% (0.0 mm)	9	Over 14.0
	1200	20	SSW	1.5	4	1005			29	76%	18% (0.0 mm)		
	1800	22	SSW	1.5	4	1002			29	82%	15% (0.0 mm)		
19-05-24	0001	20	SSW	1.5	4	1004	34	24	29	85%	14% (0.0 mm)		
	0600	19	SSW	1.4	4	1004			28	94%	16% (0.0 mm)		
	1200	21	SW	1.5	4	1005			29	76%	18% (0.0 mm)		
	1800	23	SSW	1.5	4	1002			29	81%	19% (0.0 mm)		

16 May 24 Thu (Probability 70%)

17 May 24 Fri (Probability 60%)

18 May 24 Sat (Probability 50%)

19 May 24 Sun (Probability 50%)



0 0.5 1 2 3 4 6 8 10 12 14 20

Significant wave height (m)

MARINE WEATHER FORECAST- 10 NM SOUTH OF MONGLA FAIRWAY (Lat 21° 16'N, Long 089° 34'E)

DATE : 12 to 19 May 2024

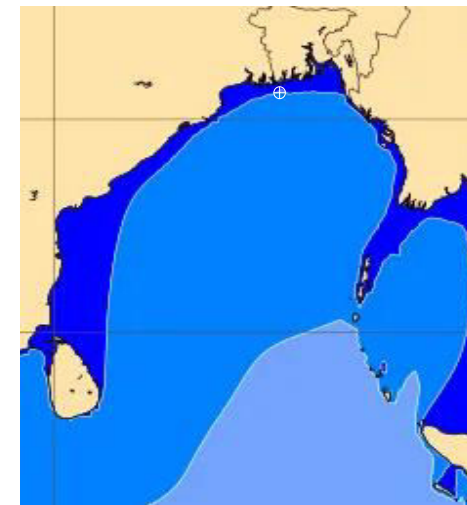
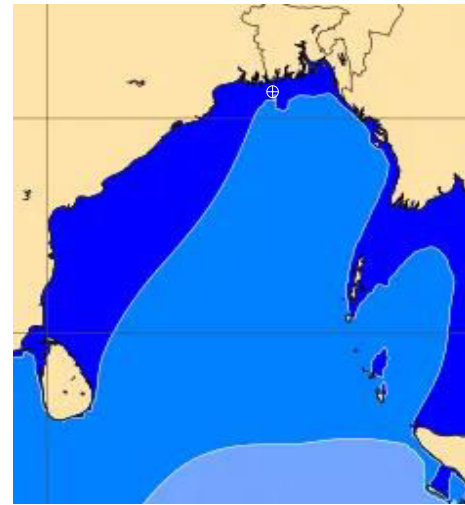
Date	Time	Max Wind Spd (kts)	Wind Direction	Wave Ht (m)	Sea State	Baro Pressure	Air Temp		Sea Surface Temp	Humidity (%)	Prob of Rain (%)	Sea State	Wave Ht (m)
							Max	Min					
12-05-24	0001	11	SSE	1.0	3	1010	34	24	29	82%	12% (0.0 mm)	0	0
	0600	9	SSW	0.9	3	1010			28	96%	14% (0.0 mm)	1	0 - 0.1
	1200	5	SSW	0.9	3	1011			29	73%	12% (0.0 mm)	2	0.1 - 0.5
	1800	10	SSW	1.1	3	1007			29	85%	16% (0.0 mm)	3	0.5 - 1.25
13-05-24	0001	11	SW	1.1	3	1009	34	24	29	84%	15% (0.0 mm)	4	1.25 - 2.5
	0600	12	SW	1.1	3	1009			28	92%	14% (0.0 mm)	5	2.5 - 4.0
	1200	8	SSW	0.9	3	1011			29	76%	15% (0.0 mm)	6	4.0 - 6.0
	1800	8	S	0.9	3	1007			29	83%	14% (0.0 mm)	7	6.0 - 9.0
14-05-24	0001	11	SW	0.9	3	1009	34	24	29	85%	12% (0.0 mm)	8	9.0 - 14.0
	0600	9	SSW	0.9	3	1009			28	96%	15% (0.0 mm)	9	Over 14.0
	1200	9	SW	0.9	3	1010			29	72%	14% (0.0 mm)		
	1800	8	SSW	0.9	3	1007			29	84%	18% (0.0 mm)		
15-05-24	0001	14	SW	1.0	3	1009	34	24	29	83%	14% (0.0 mm)		
	0600	12	SW	1.0	3	1009			28	95%	16% (0.0 mm)		
	1200	13	SSW	1.0	3	1011			29	76%	18% (0.0 mm)		
	1800	15	SSW	1.0	3	1007			29	84%	19% (0.0 mm)		

12 May 24 Sun (Probability 98%)

13 May 24 Mon (Probability 95%)

14 May 24 Tue (Probability 90%)

15 May 24 Wed (Probability 80%)



0 0.5 1 2 3 4 6 8 10 12 14 20



Significant wave height (m)

MARINE WEATHER FORECAST- 10 NM SOUTH OF MONGLA FAIRWAY (Lat 21° 16' N, Long 089° 34' E)

DATE : 12 to 19 May 2024

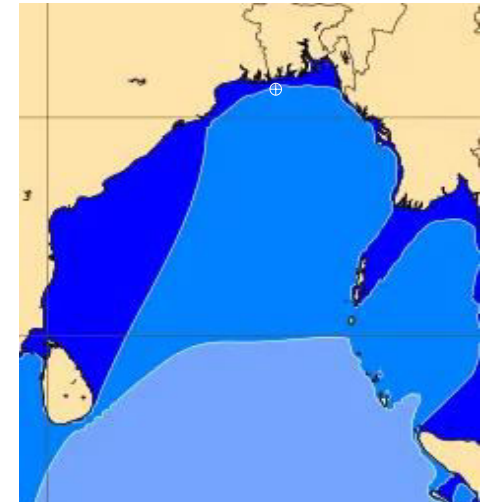
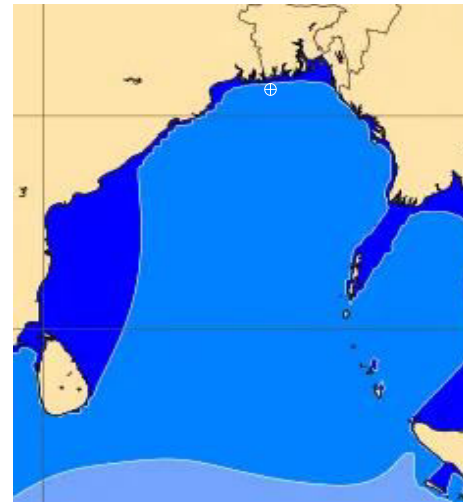
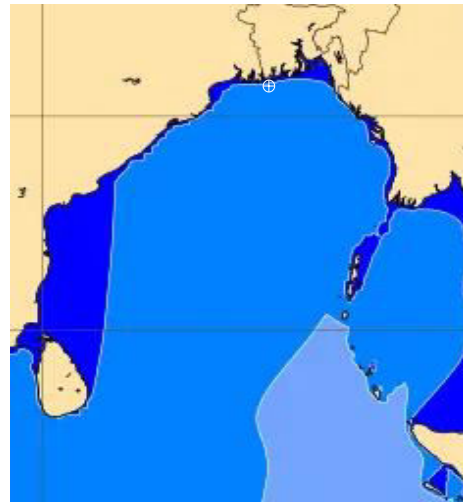
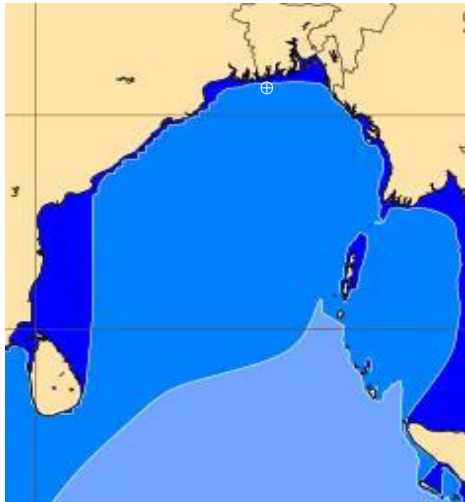
Date	Time	Max Wind Spd (kts)	W8nd Direction	Wave Ht (m)	Sea State	Baro Pressure	Air Temp		Sea Surface Temp	Humidity (%)	Prob of Rain (%)	Sea State	Wave Ht (m)
							Max	Min					
16-05-24	0001	15	SSW	1.1	3	1009	34	24	29	83%	12% (0.0 mm)	0	0
	0600	12	SW	1.0	3	1009			28	94%	14% (0.0 mm)	1	0 - 0.1
	1200	14	SW	1.0	3	1010			29	75%	13% (0.0 mm)	2	0.1 - 0.5
	1800	15	SW	1.1	3	1007			29	86%	18% (0.0 mm)	3	0.5 - 1.25
17-05-24	0001	21	SSW	1.3	4	1006	34	24	29	82%	14% (0.0 mm)	4	1.25 - 2.5
	0600	19	SSW	1.3	4	1007			28	93%	15% (0.0 mm)	5	2.5 - 4.0
	1200	22	SW	1.5	4	1007			29	74%	16% (0.0 mm)	6	4.0 - 6.0
	1800	23	SSW	1.5	4	1004			29	85%	19% (0.0 mm)	7	6.0 - 9.0
18-05-24	0001	28	SSW	1.8	4	1004	34	24	29	86%	15% (0.0 mm)	8	9.0 - 14.0
	0600	27	SSW	1.8	4	1004			28	92%	14% (0.0 mm)	9	Over 14.0
	1200	26	SW	1.5	4	1003			29	74%	16% (0.0 mm)		
	1800	25	SSW	1.6	4	1002			29	85%	18% (0.0 mm)		
19-05-24	0001	28	SSW	1.8	4	1002	34	24	29	86%	14% (0.0 mm)		
	0600	22	SSW	1.7	4	1003			28	93%	16% (0.0 mm)		
	1200	26	SW	1.8	4	1004			29	78%	18% (0.0 mm)		
	1800	23	SSW	1.7	4	1002			29	84%	19% (0.0 mm)		

16 May 24 Thu (Probability 70%)

17 May 24 Fri (Probability 60%)

18 May 24 Sat (Probability 50%)

19 May 24 Sun (Probability 50%)

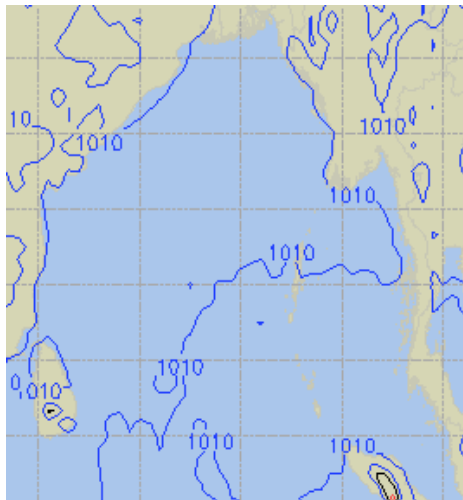


0 0.5 1 2 3 4 6 8 10 12 14 20

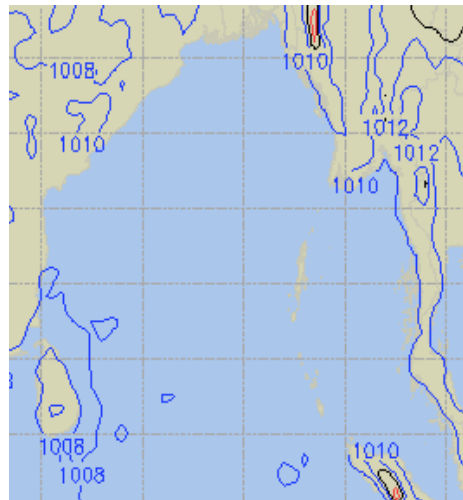
Significant wave height (m)

PREDICTED SURFACE PRESSURE FORECAST (12 to 18 May 2024)

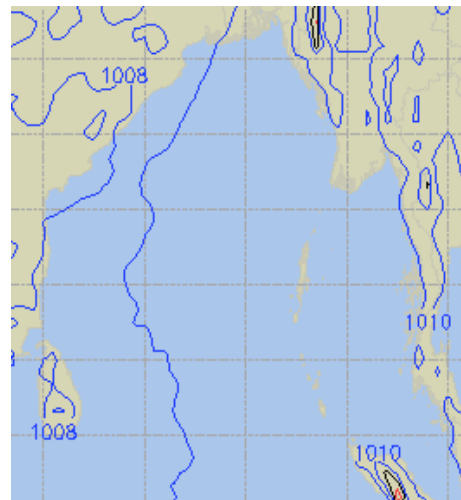
12 May 24 Sun (Probability 98%)



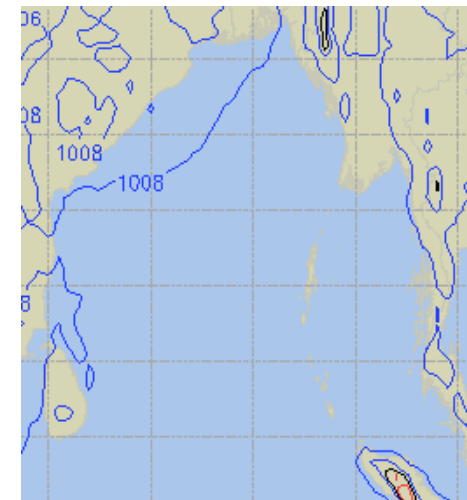
13 May 24 Mon (Probability 95%)



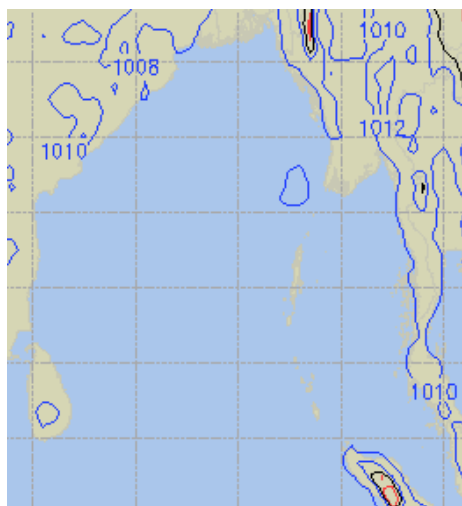
14 May 24 Tue (Probability 90%)



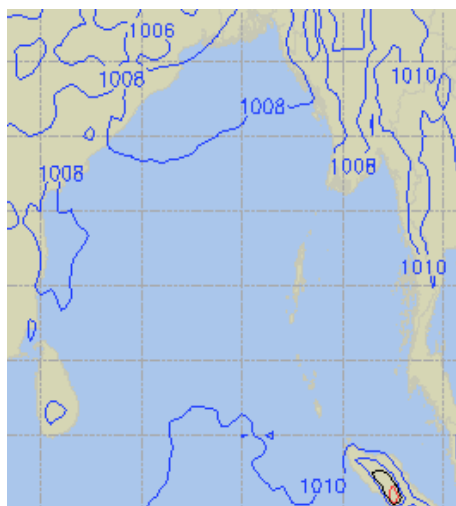
15 May 24 Wed (Probability 80%)



16 May 24 Thu (Probability 70%)



17 May 24 Fri (Probability 60%)



18 May 24 Sat (Probability 60%)

