



**SUMMARY OF MARINE WEATHER FORECAST**  
**COASTAL AREA OF BANGLADESH**  
**DATE: 12 to 19 Mar 2025**



Fleet forecast	Seasonal low lies over the South Bay.
Wind direction, speed	West/North-westerly 8 kts, (Temporary gusting up to 18 kts).
Wave height & sea state	Wave height: 0.1 to 1.2 m (Sea state:1 to 3).
Sea surface temperature	23°C - 28°C (May remain nearly unchanged).
Baro pressure	1008-1015 mb.
Rainfall	Light Rain/thunder showers accompanied by temporary gusty wind is likely to occur over the Bay of Bengal & adjoining area.
Fog	Light fog may occur over the coastal area during late night to early morning.

**Outlook for 12 to 19 Mar 2025:** Weather may remain dry with partly cloudy sky. Night and day temperature may rise.



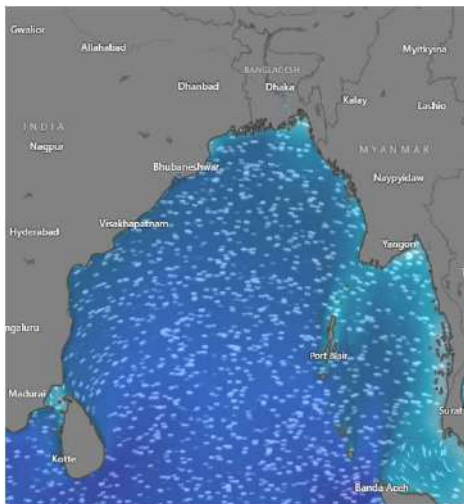
# MARINE WEATHER FORECAST (12 to 19 Mar 2025)

## PATENGA POINT (22° 12' N, 091° 38' E)

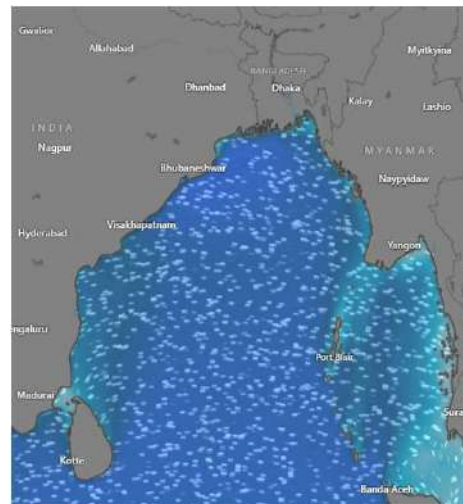


Date	Time	Air Temp (°C)		Sea Surface Temp (°C)	Baro Pressure (mbar)	Wind Direction	Wind Spd (kts)		Wave Ht (m)	Sea State	Humidity (%)	Prob of Rain (%)	Amount of Rain (mm)
		Max	Min				Gusting	Avg					
12-03-25 (Wednesday)	0001	31	21	24	1009	E	9	4	0.2	2	85	6	0.0
	0600			23	1012	SE	7	3	0.2	2	88	8	0.0
	1200			27	1010	SSW	12	8	0.2	2	64	2	0.0
	1800			25	1011	SSW	14	7	0.3	2	85	5	0.0
13-03-25 (Thursday)	0001	31	22	24	1009	SSE	10	6	0.3	2	93	7	0.0
	0600			23	1012	SSE	12	9	0.4	2	98	8	0.0
	1200			27	1010	S	19	13	0.5	2	74	2	0.0
	1800			25	1011	S	18	12	0.5	2	92	7	0.0
14-03-25 (Friday)	0001	31	22	24	1009	SSE	15	10	0.5	2	94	5	0.0
	0600			23	1012	SSE	14	8	0.5	2	98	8	0.0
	1200			27	1010	SSW	18	12	0.5	2	72	2	0.0
	1800			25	1011	SSW	16	9	0.4	2	94	6	0.0
15-03-25 (Saturday)	0001	31	22	24	1009	SSE	13	9	0.4	2	98	6	0.0
	0600			23	1012	S	15	9	0.4	2	95	8	0.0
	1200			27	1010	SSW	14	8	0.3	2	73	2	0.0
	1800			25	1011	SSW	15	9	0.3	2	91	5	0.0

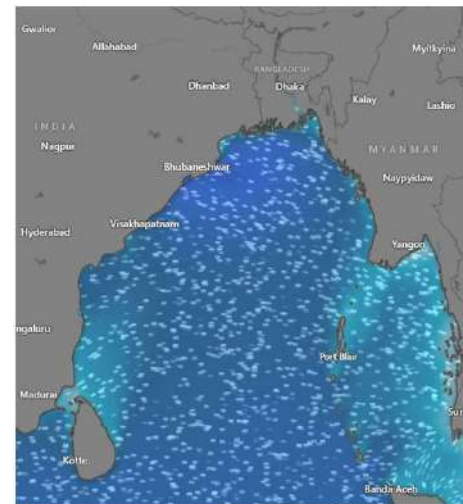
**12 Mar 2025**



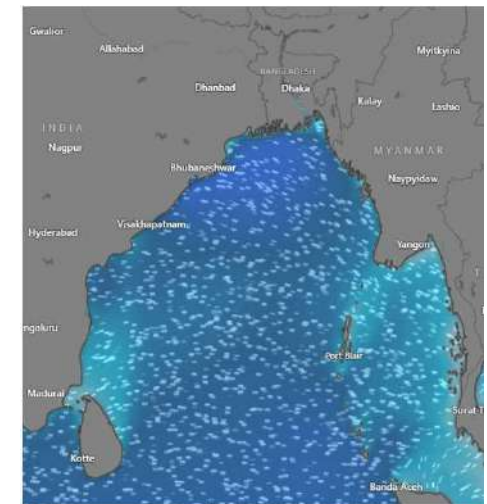
**13 Mar 2025**



**14 Mar 2025**



**15 Mar 2025**



Significant wave height (m)



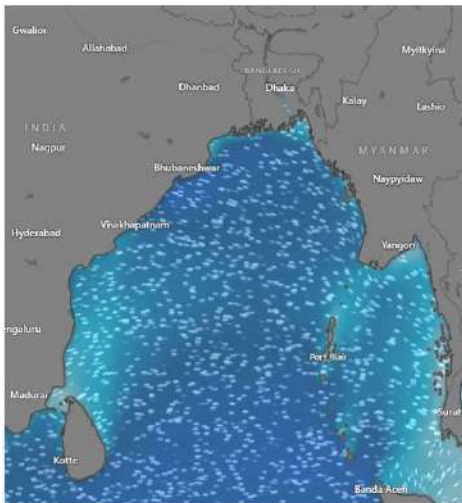
# MARINE WEATHER FORECAST (12 to 19 Mar 2025)

## PATENGA POINT (22° 12' N, 091° 38' E)

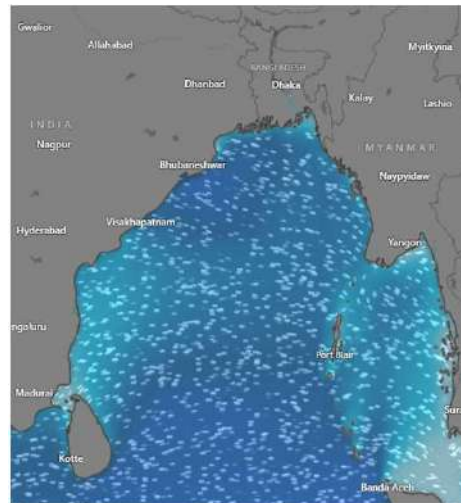


Date	Time	Air Temp (°C)		Sea Surface Temp (°C)	Baro Pressure (mbar)	Wind Direction	Wind Spd (kts)		Wave Ht (m)	Sea State	Humidity (%)	Prob of Rain (%)	Amount of Rain (mm)
		Max	Min				Gusting	Avg					
16-03-25 (Sunday)	0001	31	21	25	1008	S	11	8	0.4	2	98	6	0.0
	0600			24	1012	SSE	11	6	0.3	2	96	7	0.0
	1200			27	1009	S	14	9	0.3	2	75	2	0.0
	1800			25	1011	SSW	16	8	0.3	2	91	5	0.0
17-03-25 (Monday)	0001	31	21	25	1008	SSW	12	8	0.4	2	99	7	0.0
	0600			24	1012	SSE	12	8	0.3	2	95	9	0.0
	1200			27	1009	SSW	14	10	0.3	2	74	3	0.0
	1800			25	1011	SSW	17	9	0.3	2	92	6	0.0
18-03-25 (Tuesday)	0001	31	22	25	1008	SSE	11	7	0.3	2	98	5	0.0
	0600			24	1012	SSE	12	9	0.3	2	94	8	0.0
	1200			27	1009	SSW	15	10	0.4	2	73	2	0.0
	1800			25	1011	SSW	12	9	0.4	2	91	7	0.0
19-03-25 (Wednesday)	0001	31	22	25	1008	SSE	14	10	0.5	2	98	7	0.0
	0600			24	1012	SSE	16	11	0.5	2	95	8	0.0
	1200			27	1009	SSW	18	13	0.5	2	72	3	0.0
	1800			25	1011	SSW	18	12	0.5	2	94	6	0.0

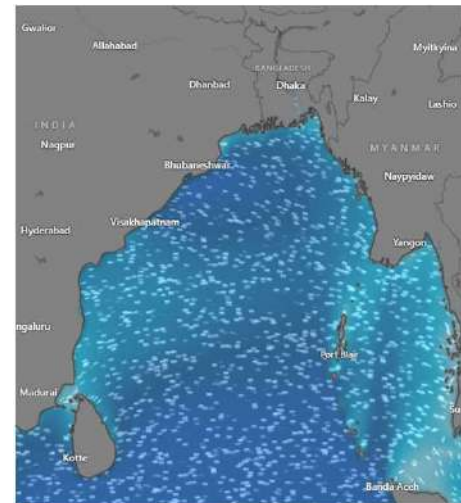
**16 Mar 2025**



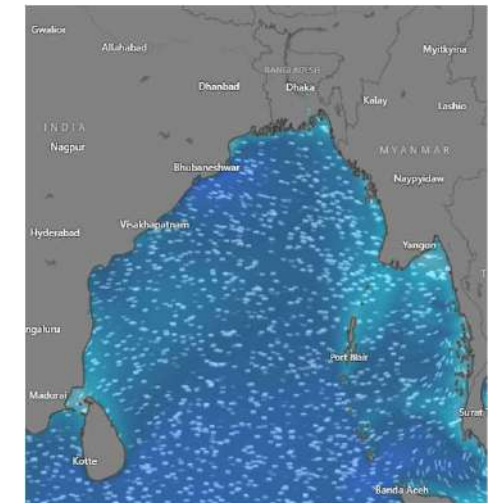
**17 Mar 2025**



**18 Mar 2025**



**19 Mar 2025**



Significant wave height (m)



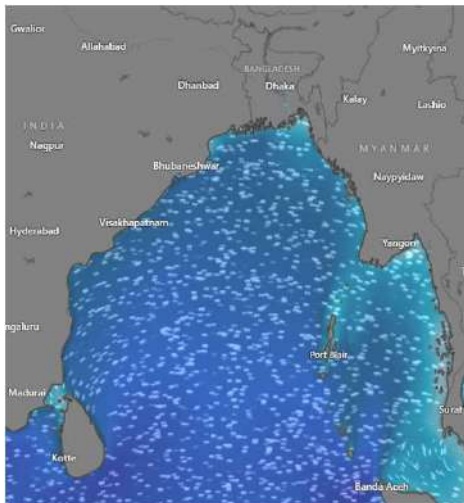
# MARINE WEATHER FORECAST (12 to 19 Mar 2025)

## ABEAM TO KUTUBDIA (21° 51' N, 091° 40' E)

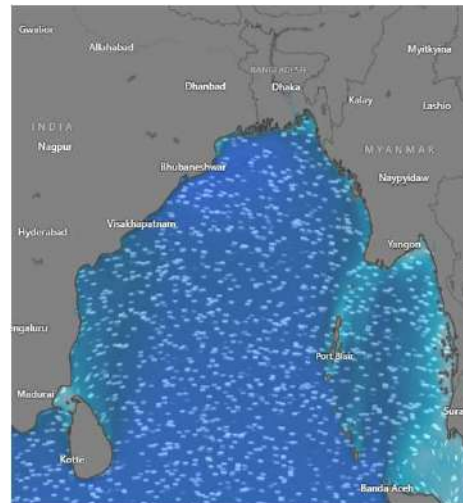


Date	Time	Air Temp (°C)		Sea Surface Temp (°C)	Baro Pressure (mbar)	Wind Direction	Wind Spd (kts)		Wave Ht (m)	Sea State	Humidity (%)	Prob of Rain (%)	Amount of Rain (mm)
		Max	Min				Gusting	Avg					
12-03-25 (Wednesday)	0001	31	21	24	1010	NW	10	4	0.3	2	85	5	0.0
	0600			23	1014	E	7	3	0.3	2	89	7	0.0
	1200			27	1010	SSW	9	7	0.3	2	62	2	0.0
	1800			25	1013	SSW	11	8	0.3	2	86	6	0.0
13-03-25 (Thursday)	0001	31	21	24	1010	S	12	8	0.4	2	94	7	0.0
	0600			23	1014	SSE	13	10	0.4	2	97	8	0.0
	1200			27	1010	S	15	13	0.5	2	72	3	0.0
	1800			25	1012	SSW	16	14	0.5	2	93	7	0.0
14-03-25 (Friday)	0001	31	21	24	1010	SSE	18	13	0.6	3	95	6	0.0
	0600			23	1014	SSE	17	12	0.6	3	98	8	0.0
	1200			27	1010	SSW	15	12	0.6	3	74	2	0.0
	1800			25	1012	SSW	14	11	0.6	3	92	5	0.0
15-03-25 (Saturday)	0001	31	21	24	1010	S	14	11	0.5	2	94	7	0.0
	0600			23	1014	SSW	15	10	0.5	2	97	8	0.0
	1200			27	1010	SSW	12	9	0.4	2	75	3	0.0
	1800			25	1012	SSW	13	10	0.4	2	91	5	0.0

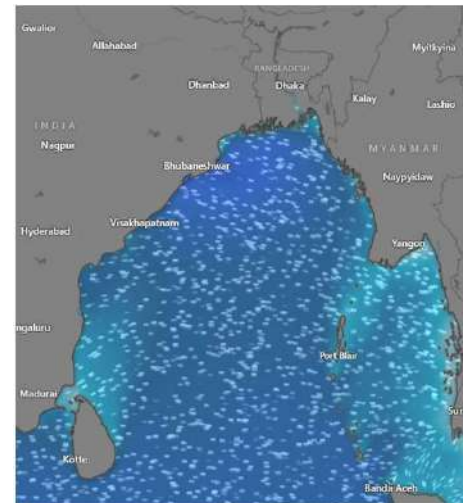
**12 Mar 2025**



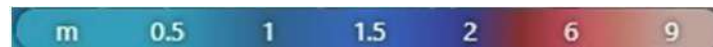
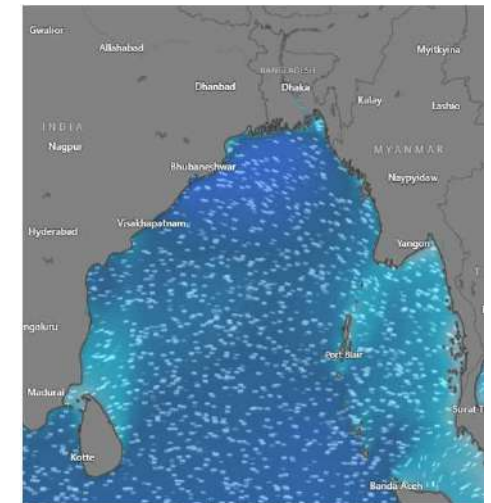
**13 Mar 2025**



**14 Mar 2025**



**15 Mar 2025**



Significant wave height (m)



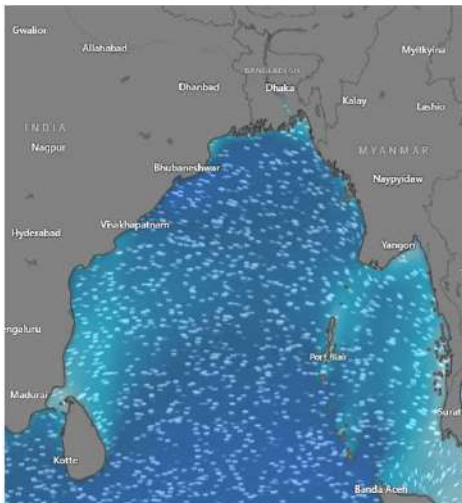
# MARINE WEATHER FORECAST (12 to 19 Mar 2025)

## ABEAM TO KUTUBDIA (21° 51' N, 091° 40' E)

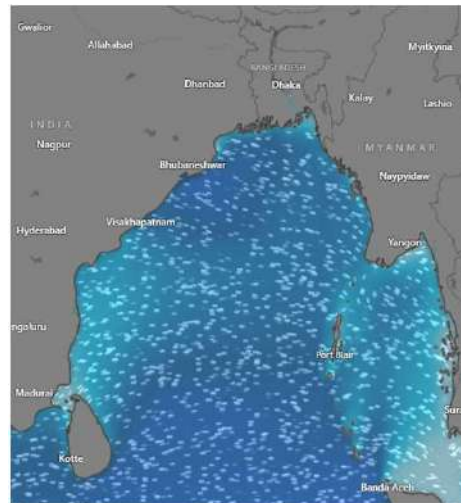


Date	Time	Air Temp (°C)		Sea Surface Temp (°C)	Baro Pressure (mbar)	Wind Direction	Wind Spd (kts)		Wave Ht (m)	Sea State	Humidity (%)	Prob of Rain (%)	Amount of Rain (mm)
		Max	Min				Gusting	Avg					
16-03-25 (Sunday)	0001	31	21	24	1009	SSW	12	9	0.5	2	99	6	0.0
	0600			23	1012	S	11	7	0.5	2	97	8	0.0
	1200			27	1010	S	13	9	0.4	2	75	2	0.0
	1800			25	1011	SSW	15	11	0.5	2	92	7	0.0
17-03-25 (Monday)	0001	31	22	24	1009	S	13	9	0.5	2	99	8	0.0
	0600			23	1012	SSE	15	10	0.5	2	96	9	0.0
	1200			27	1010	S	14	10	0.5	2	76	4	0.0
	1800			25	1011	SSW	14	9	0.4	2	93	6	0.0
18-03-25 (Tuesday)	0001	31	22	24	1009	S	12	7	0.4	2	99	8	0.0
	0600			23	1012	SSE	13	10	0.4	2	97	9	0.0
	1200			27	1010	S	14	11	0.5	2	75	3	0.0
	1800			25	1011	SSW	14	10	0.5	2	94	7	0.0
19-03-25 (Wednesday)	0001	31	22	24	1009	SSE	15	11	0.5	2	98	5	0.0
	0600			23	1012	SSE	18	14	0.6	3	95	7	0.0
	1200			27	1010	S	17	13	0.6	3	73	2	0.0
	1800			25	1011	SSW	17	12	0.6	3	92	6	0.0

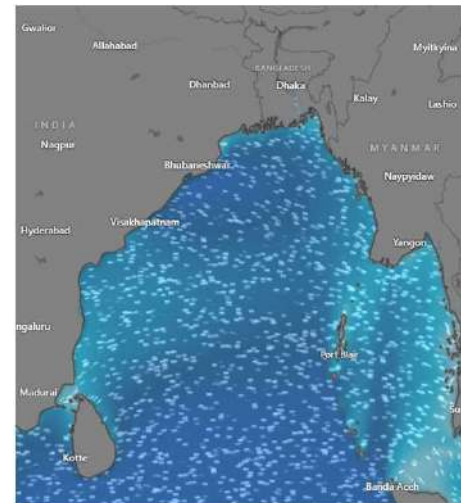
**16 Mar 2025**



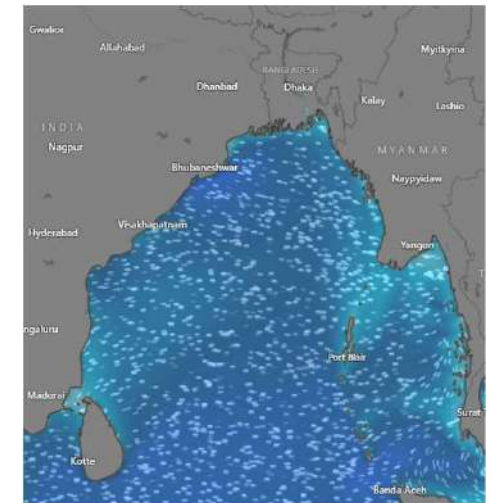
**17 Mar 2025**



**18 Mar 2025**



**19 Mar 2025**



Significant wave height (m)

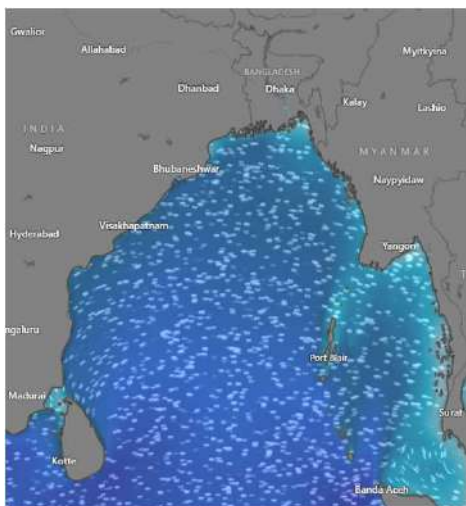


# MARINE WEATHER FORECAST (12 to 19 Mar 2025) ABEAM TO ELEPHANT POINT (21° 11' N, 091° 52' E)

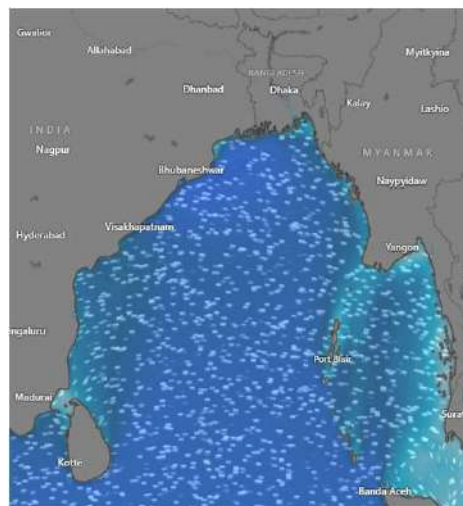


Date	Time	Air Temp (°C)		Sea Surface Temp (°C)	Baro Pressure (mbar)	Wind Direction	Wind Spd (kts)		Wave Ht (m)	Sea State	Humidity (%)	Prob of Rain (%)	Amount of Rain (mm)
		Max	Min				Gusting	Avg					
12-03-25 (Wednesday)	0001	31	21	24	1010	N	12	6	0.6	3	94	7	0.0
	0600			23	1013	E	8	4	0.6	3	92	9	0.0
	1200			27	1010	SSW	7	6	0.7	3	63	3	0.0
	1800			25	1012	SW	13	10	0.7	3	87	5	0.0
13-03-25 (Thursday)	0001	31	21	24	1009	SSW	10	6	0.8	3	99	7	0.0
	0600			23	1013	SSE	10	7	0.8	3	97	9	0.0
	1200			27	1010	SSW	11	9	0.8	3	73	2	0.0
	1800			25	1012	SSW	12	9	0.9	3	94	7	0.0
14-03-25 (Friday)	0001	31	21	24	1009	S	13	10	1.0	3	98	6	0.0
	0600			23	1013	SSE	14	11	1.0	3	97	8	0.0
	1200			27	1010	SSW	14	10	1.0	3	75	2	0.0
	1800			25	1012	SSW	11	8	1.0	3	93	5	0.0
15-03-25 (Saturday)	0001	31	22	24	1009	SSW	11	8	1.0	3	98	5	0.0
	0600			23	1013	S	10	9	1.0	3	96	7	0.0
	1200			27	1010	S	10	7	1.0	3	74	2	0.0
	1800			25	1012	S	12	8	1.0	3	92	6	0.0

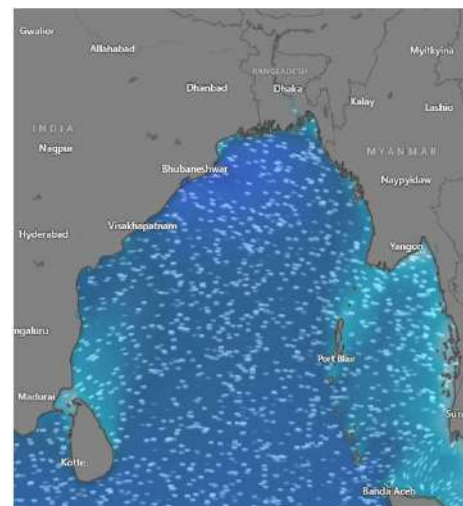
**12 Mar 2025**



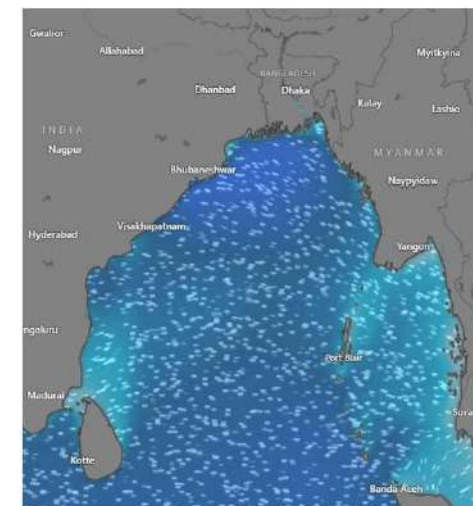
**13 Mar 2025**



**14 Mar 2025**



**15 Mar 2025**



Significant wave height (m)

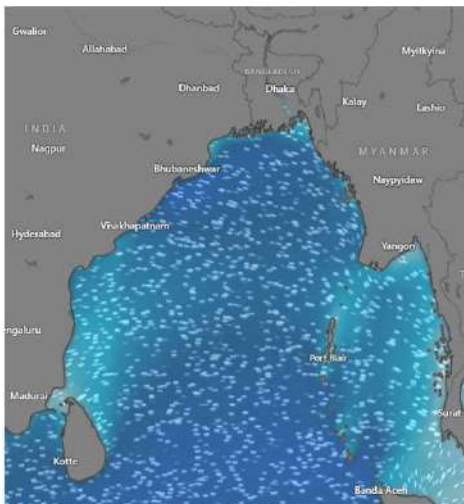


# MARINE WEATHER FORECAST (12 to 19 Mar 2025) ABEAM TO ELEPHANT POINT (21° 11' N, 091° 52' E)

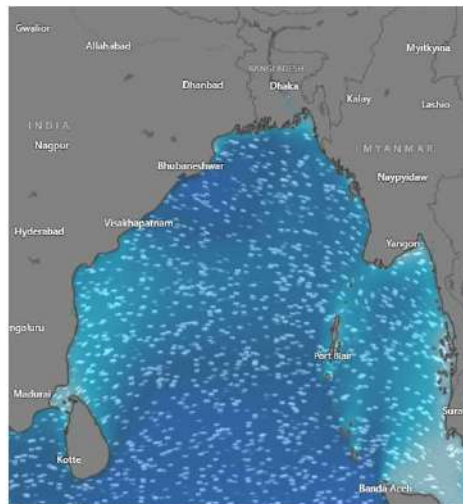


Date	Time	Air Temp (°C)		Sea Surface Temp (°C)	Baro Pressure (mbar)	Wind Direction	Wind Spd (kts)		Wave Ht (m)	Sea State	Humidity (%)	Prob of Rain (%)	Amount of Rain (mm)
		Max	Min				Gusting	Avg					
16-03-25 (Sunday)	0001	31	22	24	1008	SW	11	5	1.0	3	99	6	0.0
	0600			23	1012	SSE	7	4	0.9	3	98	8	0.0
	1200			27	1009	S	5	7	0.9	3	76	3	0.0
	1800			25	1011	SW	11	10	0.9	3	94	5	0.0
17-03-25 (Monday)	0001	31	22	24	1008	SW	13	5	0.8	3	99	8	0.0
	0600			23	1012	E	8	8	0.7	3	97	9	0.0
	1200			27	1009	S	8	8	0.8	3	76	3	0.0
	1800			25	1011	SW	9	7	0.7	3	96	7	0.0
18-03-25 (Tuesday)	0001	31	22	24	1008	SSW	9	5	0.7	3	98	7	0.0
	0600			23	1012	SSE	9	6	0.8	3	96	9	0.0
	1200			27	1009	SSW	12	9	0.8	3	74	3	0.0
	1800			25	1011	SSW	11	8	0.8	3	93	6	0.0
19-03-25 (Wednesday)	0001	31	22	24	1008	S	12	10	0.8	3	98	6	0.0
	0600			23	1012	SSE	14	9	0.8	3	96	8	0.0
	1200			27	1009	SSW	15	10	0.9	3	73	2	0.0
	1800			25	1011	SSW	13	11	0.9	3	92	4	0.0

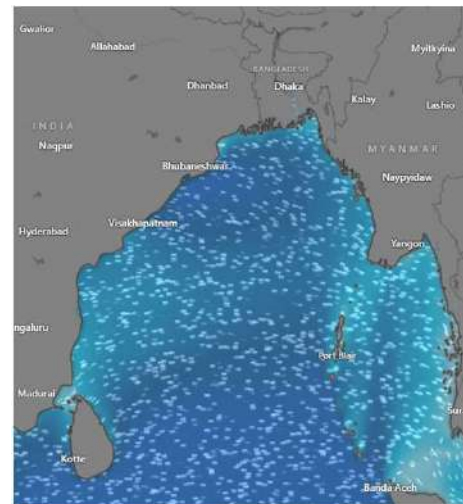
**16 Mar 2025**



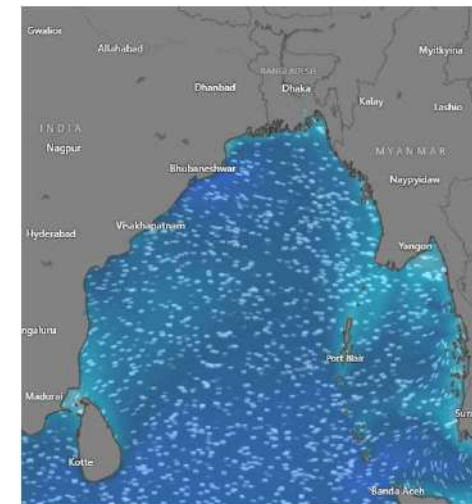
**17 Mar 2025**



**18 Mar 2025**



**19 Mar 2025**



Significant wave height (m)



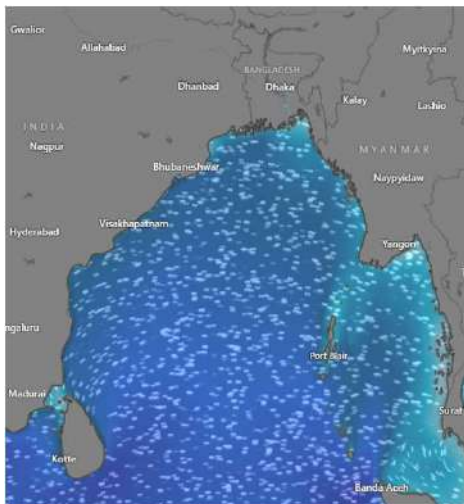
# MARINE WEATHER FORECAST (12 to 19 Mar 2025)

## ABEAM TO ST. MARTIN'S LIGHT HOUSE (20° 37' N, 092° 08' E)



Date	Time	AirTemp (°C)		Sea Surface Temp (°C)	Baro Pressure (mbar)	Wind Direction	Wind Spd (kts)		Wave Ht (m)	Sea State	Humidity (%)	Prob of Rain (%)	Amount of Rain (mm)
		Max	Min				Gusting	Avg					
12-03-25 (Wednesday)	0001	31	22	25	1009	NNW	10	6	0.6	3	88	5	0.0
	0600			24	1014	N	8	3	0.7	3	91	8	0.0
	1200			28	1011	W	10	8	0.7	3	62	2	0.0
	1800			26	1012	W	14	11	0.8	3	87	6	0.0
13-03-25 (Thursday)	0001	31	22	25	1009	W	10	6	0.7	3	97	5	0.0
	0600			24	1014	SSE	6	4	0.8	3	99	8	0.0
	1200			28	1011	SSW	9	7	0.9	3	76	2	0.0
	1800			26	1012	SSW	10	7	1.0	3	95	6	0.0
14-03-25 (Friday)	0001	30	22	25	1009	SSW	8	6	0.9	3	98	7	0.0
	0600			24	1014	SSE	10	8	0.9	3	99	8	0.0
	1200			28	1011	SSW	10	7	0.9	3	75	2	0.0
	1800			26	1012	SW	11	7	0.9	3	94	5	0.0
15-03-25 (Saturday)	0001	30	22	25	1009	SSW	10	8	0.8	3	97	6	0.0
	0600			24	1014	S	7	5	0.7	3	98	7	0.0
	1200			28	1011	SSW	8	5	0.8	3	74	2	0.0
	1800			26	1012	W	8	6	0.8	3	92	4	0.0

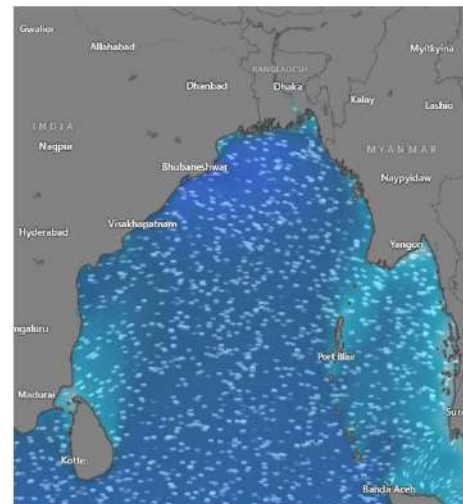
**12 Mar 2025**



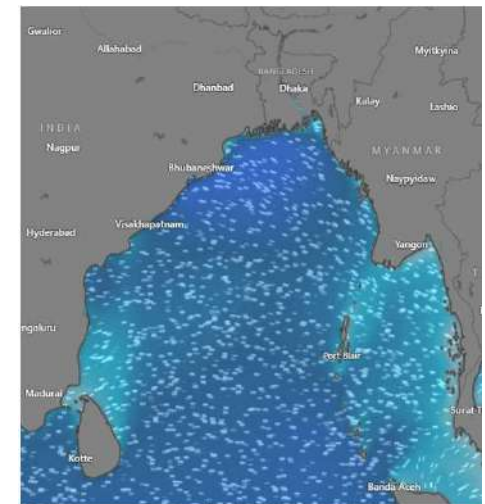
**13 Mar 2025**



**14 Mar 2025**



**15 Mar 2025**



Significant wave height (m)





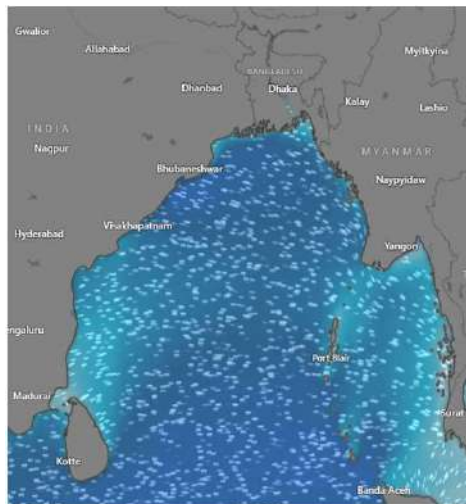
# MARINE WEATHER FORECAST (12 to 19 Mar 2025)

## ABEAM TO ST. MARTIN'S LIGHT HOUSE (20° 37' N, 092° 08' E)

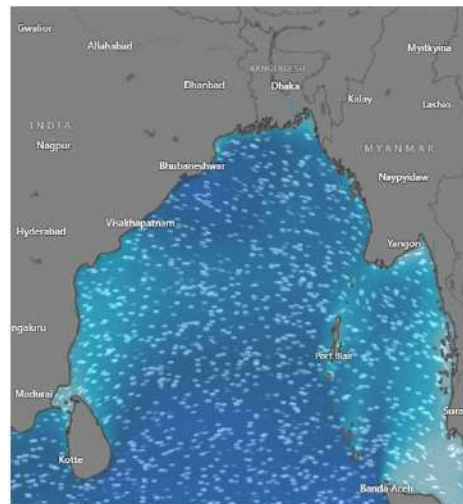


Date	Time	Air Temp (°C)		Sea Surface Temp (°C)	Baro Pressure (mbar)	Wind Direction	Wind Spd (kts)		Wave Ht (m)	Sea State	Humidity (%)	Prob of Rain (%)	Amount of Rain (mm)
		Max	Min				Gusting	Avg					
16-03-25 (Sunday)	0001	31	22	25	1009	W	10	6	0.9	3	97	6	0.0
	0600			24	1014	SE	5	3	0.9	3	99	7	0.0
	1200			28	1010	SW	6	3	0.9	3	75	3	0.0
	1800			26	1012	SW	13	8	1.1	3	92	5	0.0
17-03-25 (Monday)	0001	31	22	25	1009	NW	10	6	1.0	3	98	6	0.0
	0600			24	1014	NNE	8	6	0.9	3	99	8	0.0
	1200			28	1010	NW	6	4	0.9	3	79	3	0.0
	1800			26	1012	W	11	7	0.9	3	95	6	0.0
18-03-25 (Tuesday)	0001	32	22	25	1009	W	10	4	0.8	3	96	6	0.0
	0600			24	1014	SE	5	3	0.8	3	98	8	0.0
	1200			28	1010	SSW	10	9	0.9	3	74	3	0.0
	1800			26	1012	SW	11	8	0.9	3	92	5	0.0
19-03-25 (Wednesday)	0001	32	22	25	1009	SSW	10	6	0.8	3	96	5	0.0
	0600			24	1014	SSE	11	8	0.8	3	98	7	0.0
	1200			28	1010	S	12	7	0.8	3	72	2	0.0
	1800			26	1012	SSW	13	9	0.8	3	93	6	0.0

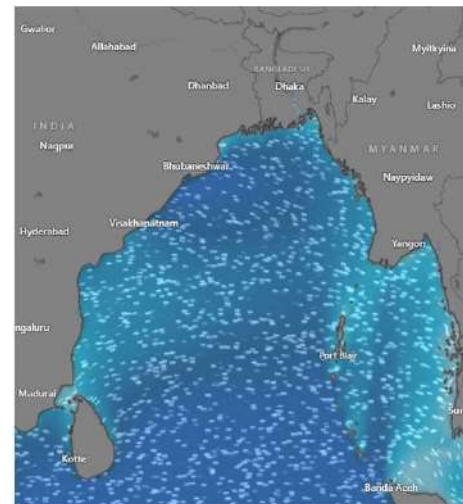
**16 Mar 2025**



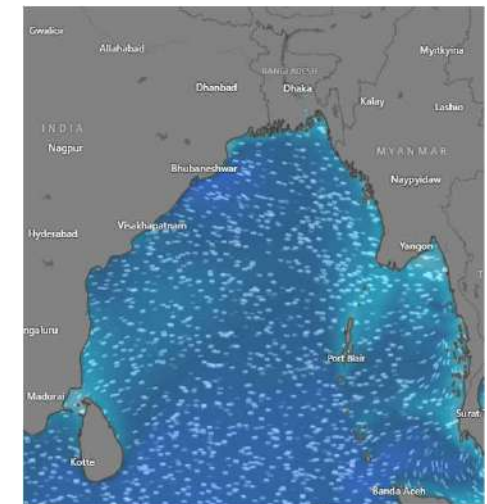
**17 Mar 2025**



**18 Mar 2025**



**19 Mar 2025**



Significant wave height (m)



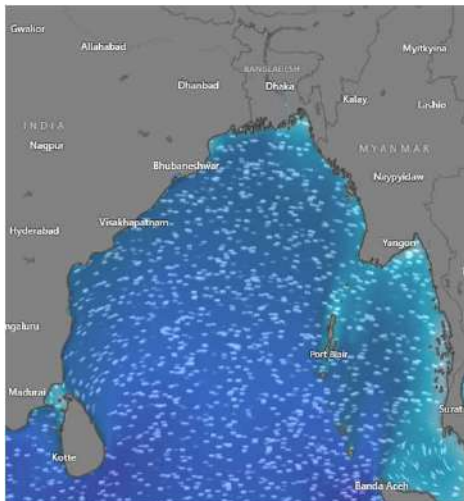
# MARINE WEATHER FORECAST (12 to 19 Mar 2025)

## PAYRA FAIRWAY (21° 22' N, 090° 6' E)



Date	Time	Air Temp (°C)		Sea Surface Temp (°C)	Baro Pressure (mbar)	Wind Direction	Wind Spd (kts)		Wave Ht (m)	Sea State	Humidity (%)	Prob of Rain (%)	Amount of Rain (mm)
		Max	Min				Gusting	Avg					
12-03-25 (Wednesday)	0001	31	22	25	1010	SW	9	7	0.6	3	88	6	0.0
	0600			24	1014	SW	10	8	0.7	3	92	7	0.0
	1200			27	1011	SW	13	10	0.8	3	64	2	0.0
	1800			26	1012	SSW	15	12	1.0	3	85	6	0.0
13-03-25 (Thursday)	0001	31	22	25	1009	SSW	16	13	1.2	3	93	7	0.0
	0600			24	1013	SW	16	12	1.2	3	96	8	0.0
	1200			27	1010	SW	17	14	1.2	3	75	3	0.0
	1800			26	1012	SSW	16	12	1.2	3	92	5	0.0
14-03-25 (Friday)	0001	31	22	25	1009	SSW	17	12	1.2	3	93	6	0.0
	0600			24	1013	SW	14	10	1.2	3	95	8	0.0
	1200			27	1010	SSW	15	10	1.2	3	72	2	0.0
	1800			26	1012	SSW	13	10	1.2	3	93	6	0.0
15-03-25 (Saturday)	0001	31	22	25	1009	SSW	17	13	1.2	3	94	6	0.0
	0600			24	1013	SW	18	14	1.2	3	97	7	0.0
	1200			27	1010	SSW	14	9	1.2	3	73	3	0.0
	1800			26	1012	SSW	14	11	1.2	3	91	5	0.0

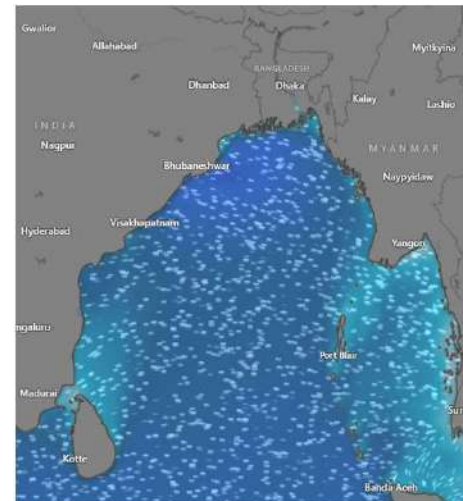
**12 Mar 2025**



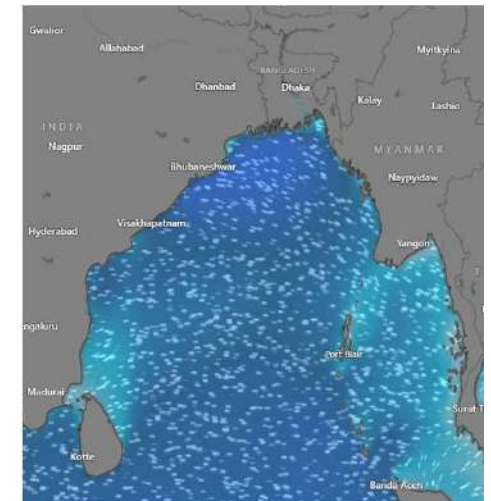
**13 Mar 2025**



**14 Mar 2025**



**15 Mar 2025**



Significant wave height (m)



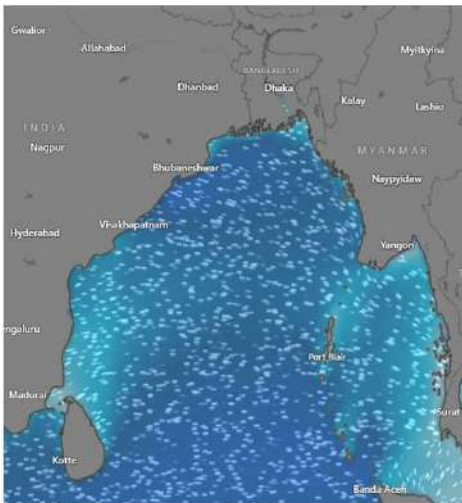
# MARINE WEATHER FORECAST (12 to 19 Mar 2025)

## PAYRA FAIRWAY (21° 22' N, 090° 6' E)

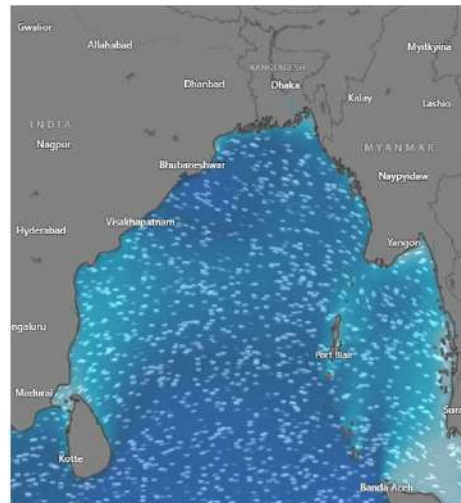


Date	Time	Air Temp (°C)		Sea Surface Temp (°C)	Baro Pressure (mbar)	Wind Direction	Wind Spd (kts)		Wave Ht (m)	Sea State	Humidity (%)	Prob of Rain (%)	Amount of Rain (mm)
		Max	Min				Gusting	Avg					
16-03-25 (Sunday)	0001	31	23	25	1008	SW	17	13	1.2	3	98	6	0.0
	0600			24	1011	W	15	9	1.1	3	99	8	0.0
	1200			27	1009	SSW	12	10	1.0	3	75	2	0.0
	1800			26	1010	SSW	16	12	1.1	3	92	5	0.0
17-03-25 (Monday)	0001	31	23	25	1008	SW	18	15	1.0	3	96	7	0.0
	0600			24	1011	SW	15	11	1.0	3	98	9	0.0
	1200			27	1009	SSW	11	9	0.9	3	73	2	0.0
	1800			26	1010	SSW	14	10	1.0	3	87	5	0.0
18-03-25 (Tuesday)	0001	31	23	26	1008	SW	16	10	1.0	3	97	8	0.0
	0600			25	1011	SW	15	9	1.0	3	99	9	0.0
	1200			28	1009	SSW	13	12	0.9	3	74	2	0.0
	1800			27	1010	SSW	16	10	1.1	3	86	5	0.0
19-03-25 (Wednesday)	0001	31	23	26	1008	SSW	13	10	1.0	3	96	5	0.0
	0600			25	1011	SW	15	10	1.1	3	99	7	0.0
	1200			28	1009	SSW	14	9	1.0	3	73	2	0.0
	1800			27	1010	SSW	16	11	1.1	3	89	4	0.0

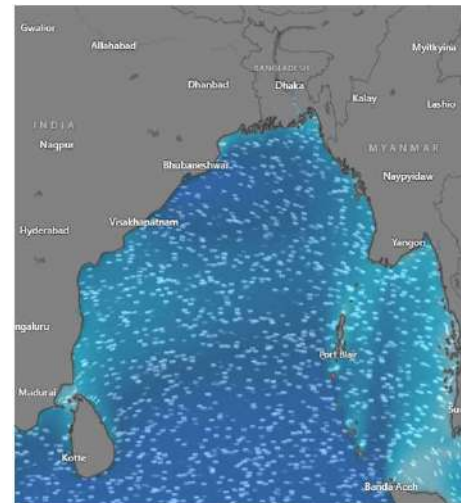
**16 Mar 2025**



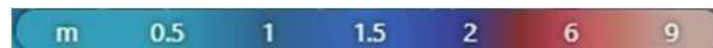
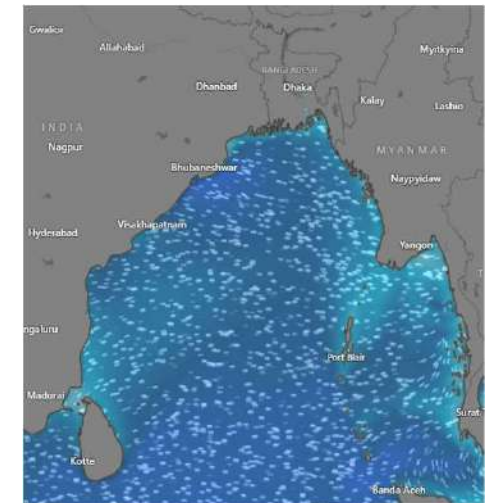
**17 Mar 2025**



**18 Mar 2025**



**19 Mar 2025**



Significant wave height (m)



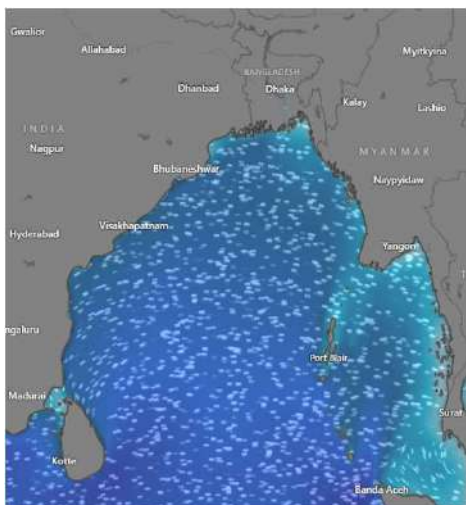
# MARINE WEATHER FORECAST (12 to 19 Mar 2025)

## MONGLA FAIRWAY (21° 26' N, 089° 34' E)

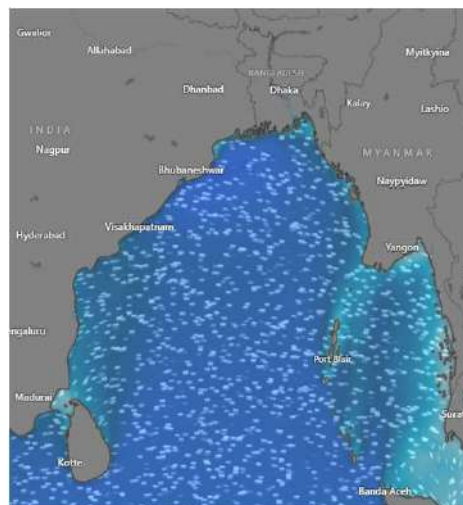


Date	Time	Air Temp (°C)		Sea Surface Temp (°C)	Baro Pressure (mbar)	Wind Direction	Wind Spd (kts)		Wave Ht (m)	Sea State	Humidity (%)	Prob of Rain (%)	Amount of Rain (mm)
		Max	Min				Gusting	Avg					
12-03-25 (Wednesday)	0001	31	21	25	1010	SW	11	9	0.6	3	92	7	0.0
	0600			24	1014	SW	13	10	0.7	3	97	8	0.0
	1200			27	1011	SW	16	12	0.9	3	54	2	0.0
	1800			26	1012	SSW	17	14	1.0	3	67	6	0.0
13-03-25 (Thursday)	0001	31	21	25	1010	SW	18	15	1.2	3	92	8	0.0
	0600			24	1014	SW	18	16	1.2	3	96	9	0.0
	1200			27	1011	SW	18	15	1.2	3	54	4	0.0
	1800			26	1012	SSW	18	14	1.2	3	65	6	0.0
14-03-25 (Friday)	0001	31	21	25	1010	SSW	17	14	1.2	3	92	7	0.0
	0600			24	1014	SW	16	13	1.2	3	97	8	0.0
	1200			27	1011	SW	17	12	1.2	3	55	3	0.0
	1800			26	1012	SSW	14	10	1.2	3	66	6	0.0
15-03-25 (Saturday)	0001	31	21	25	1010	SSW	16	12	1.2	3	93	7	0.0
	0600			24	1014	SW	18	14	1.2	3	98	8	0.0
	1200			27	1011	SSW	18	10	1.2	3	56	2	0.0
	1800			26	1012	SSW	14	11	1.2	3	67	5	0.0

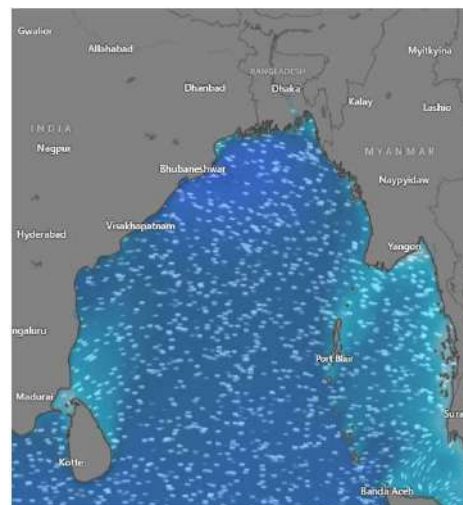
**12 Mar 2025**



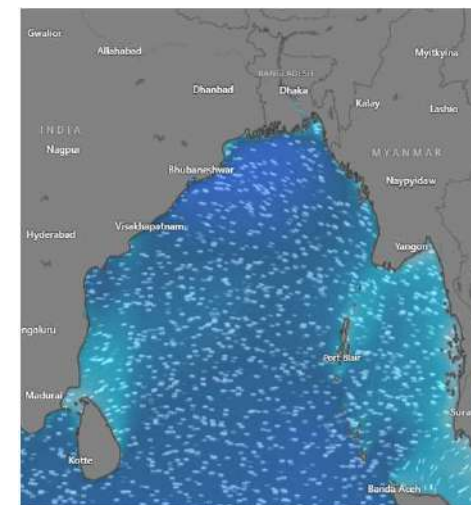
**13 Mar 2025**



**14 Mar 2025**



**15 Mar 2025**



Significant wave height (m)



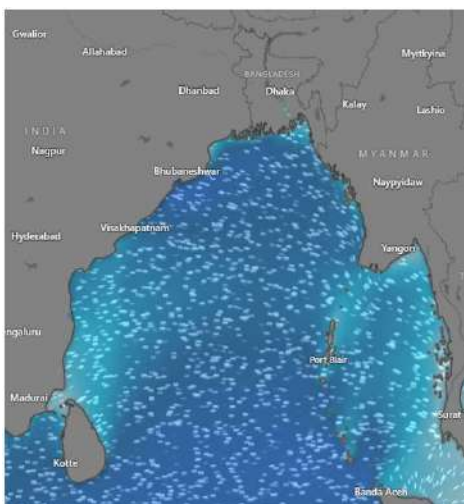
# MARINE WEATHER FORECAST (12 to 19 Mar 2025)

## MONGLA FAIRWAY (21° 26' N, 089° 34' E)

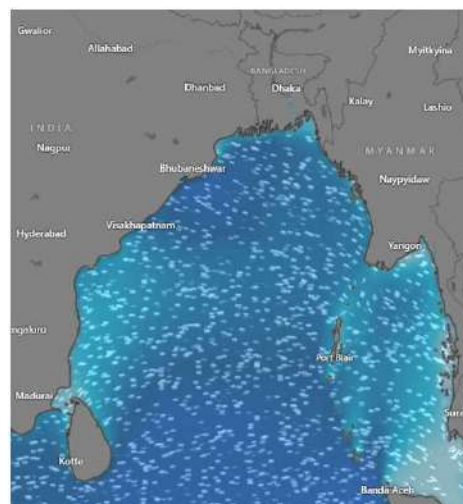


Date	Time	Air Temp (°C)		Sea Surface Temp (°C)	Baro Pressure (mbar)	Wind Direction	Wind Spd (kts)		Wave Ht (m)	Sea State	Humidity (%)	Prob of Rain (%)	Amount of Rain (mm)
		Max	Min				Gusting	Avg					
16-03-25 (Sunday)	0001	31	21	25	1008	SSW	16	13	1.2	3	94	6	0.0
	0600			24	1012	SW	14	10	1.1	3	98	8	0.0
	1200			27	1009	SSW	17	13	1.1	3	56	2	0.0
	1800			26	1011	SSW	17	11	1.1	3	84	5	0.0
17-03-25 (Monday)	0001	31	21	25	1008	SSW	18	14	1.2	3	89	6	0.0
	0600			24	1012	W	18	14	1.1	3	91	8	0.0
	1200			27	1009	SW	14	11	1.1	3	48	2	0.0
	1800			26	1011	SW	13	8	1.0	3	73	5	0.0
18-03-25 (Tuesday)	0001	31	21	25	1008	SSW	14	14	1.0	3	88	7	0.0
	0600			24	1012	SW	14	11	1.0	3	92	9	0.0
	1200			27	1009	SSW	14	11	1.0	3	45	3	0.0
	1800			26	1011	SSW	15	11	1.0	3	72	6	0.0
19-03-25 (Wednesday)	0001	31	21	25	1008	SSW	14	8	1.1	3	89	5	0.0
	0600			24	1012	SW	16	12	1.1	3	95	7	0.0
	1200			27	1009	SW	15	10	1.1	3	56	2	0.0
	1800			26	1011	SSW	17	13	1.1	3	74	4	0.0

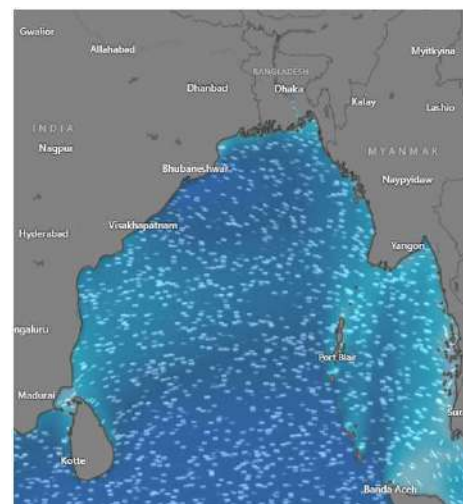
**16 Mar 2025**



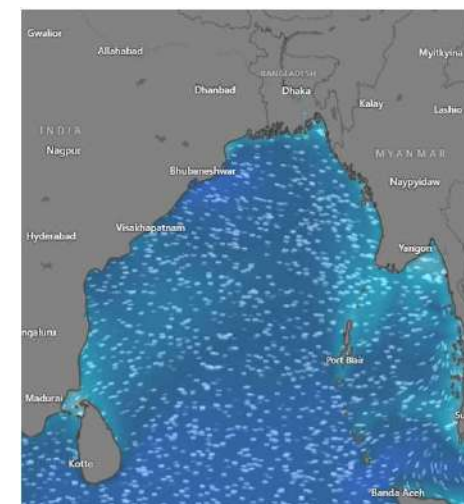
**17 Mar 2025**



**18 Mar 2025**



**19 Mar 2025**



Significant wave height (m)

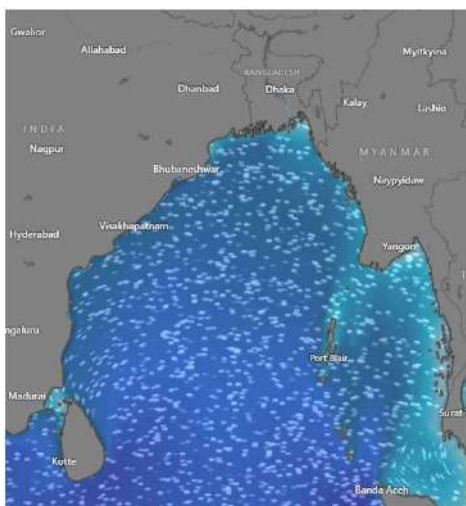


## MARINE WEATHER FORECAST (12 to 19 Mar 2025) OUTER EEZ (18° 48' N, 090° 30' E)

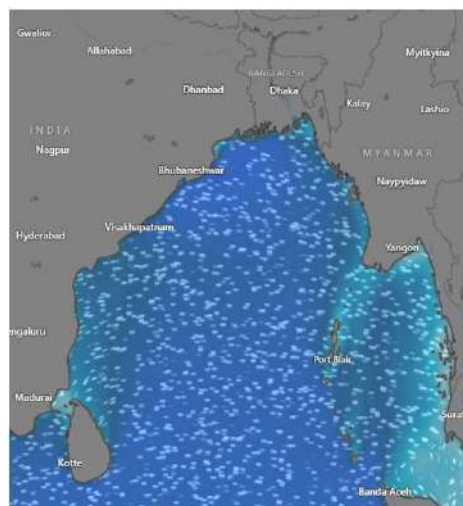


Date	Time	Air Temp (°C)		Sea Surface Temp (°C)	Baro Pressure (mbar)	Wind Direction	Wind Spd (kts)		Wave Ht (m)	Sea State	Humidity (%)	Prob of Rain (%)	Amount of Rain (mm)
		Max	Min				Gusting	Avg					
12-03-25 (Wednesday)	0001	32	21	26	1010	W	7	4	0.8	3	89	6	0.0
	0600			25	1015	W	8	5	0.8	3	92	7	0.0
	1200			28	1012	W	10	7	0.9	3	64	2	0.0
	1800			27	1013	W	12	9	1.0	3	87	5	0.0
13-03-25 (Thursday)	0001	31	21	26	1010	SW	14	10	1.1	3	96	6	0.0
	0600			25	1015	SW	14	10	1.1	3	99	8	0.0
	1200			28	1012	SW	15	11	1.2	3	76	2	0.0
	1800			27	1013	SSW	12	9	1.1	3	92	6	0.0
14-03-25 (Friday)	0001	32	21	26	1010	SW	14	10	1.1	3	95	5	0.0
	0600			25	1015	SW	15	11	1.2	3	97	7	0.0
	1200			28	1012	SW	13	8	1.2	3	76	2	0.0
	1800			27	1013	SSW	12	9	1.1	3	93	6	0.0
15-03-25 (Saturday)	0001	32	21	26	1010	SSW	16	12	1.2	3	94	6	0.0
	0600			25	1015	SSW	15	11	1.2	3	98	8	0.0
	1200			28	1012	W	12	6	1.0	3	75	2	0.0
	1800			27	1013	SW	9	6	1.0	3	93	7	0.0

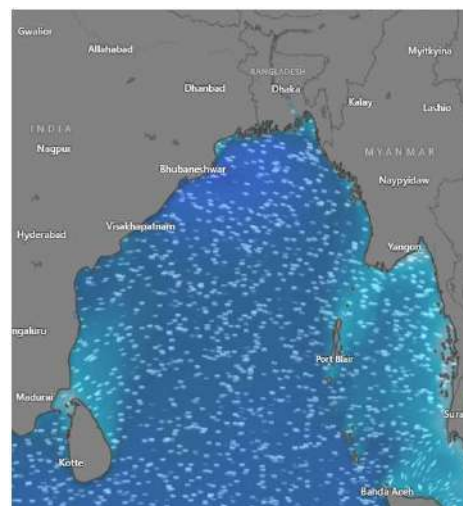
**12 Mar 2025**



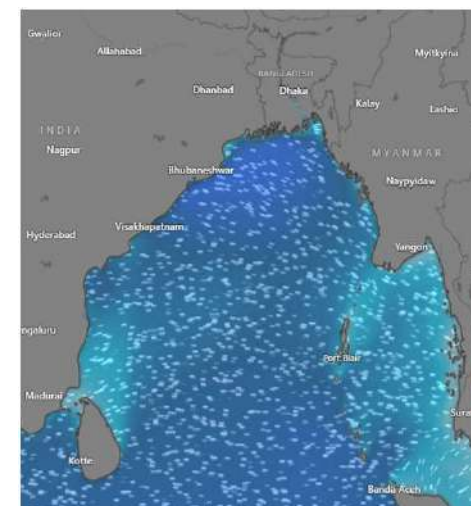
**13 Mar 2025**



**14 Mar 2025**



**15 Mar 2025**



Significant wave height (m)

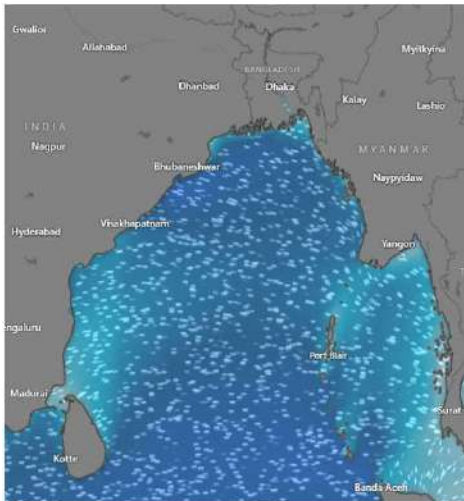


# MARINE WEATHER FORECAST (12 to 19 Mar 2025) OUTER EEZ (18° 48' N, 090° 30' E)

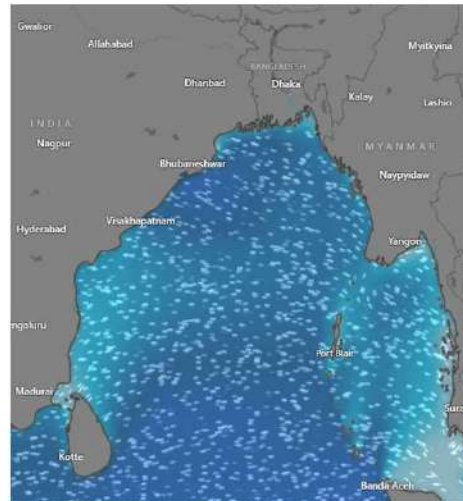


Date	Time	Air Temp (°C)		Sea Surface Temp (°C)	Baro Pressure (mbar)	Wind Direction	Wind Spd (kts)		ave Ht (m)	Sea State	Humidity (%)	Prob of Rain (%)	Amount of Rain (mm)
		Max	Min				Gusting	Avg					
16-03-25 (Sunday)	0001	32	22	26	1008	SW	12	9	1.1	3	97	7	0.0
	0600			25	1012	SW	11	8	1.1	3	99	8	0.0
	1200			28	1009	SW	14	7	1.0	3	76	2	0.0
	1800			27	1011	SSW	14	10	1.0	3	92	5	0.0
17-03-25 (Monday)	0001	32	22	26	1008	SSW	13	10	1.0	3	98	8	0.0
	0600			25	1012	SW	14	11	1.0	3	99	9	0.0
	1200			28	1009	SW	13	9	1.0	3	79	5	0.0
	1800			27	1011	SW	14	8	1.0	3	95	7	0.0
18-03-25 (Tuesday)	0001	32	22	26	1008	SW	12	10	1.1	3	97	7	0.0
	0600			25	1012	SW	15	11	1.0	3	99	8	0.0
	1200			28	1009	SW	15	9	1.0	3	76	3	0.0
	1800			27	1011	SSW	11	7	1.0	3	92	5	0.0
19-03-25 (Wednesday)	0001	32	22	26	1008	SW	14	10	1.1	3	96	6	0.0
	0600			25	1012	SSW	15	11	1.1	3	98	7	0.0
	1200			28	1009	SSW	16	11	1.1	3	74	2	0.0
	1800			27	1011	SSW	14	9	1.1	3	91	4	0.0

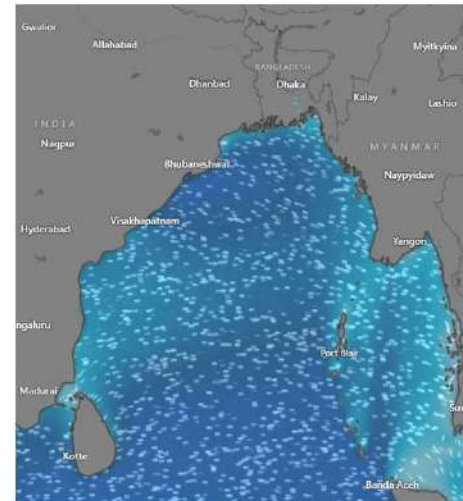
**16 Mar 2025**



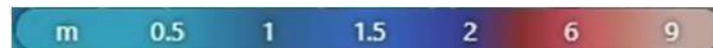
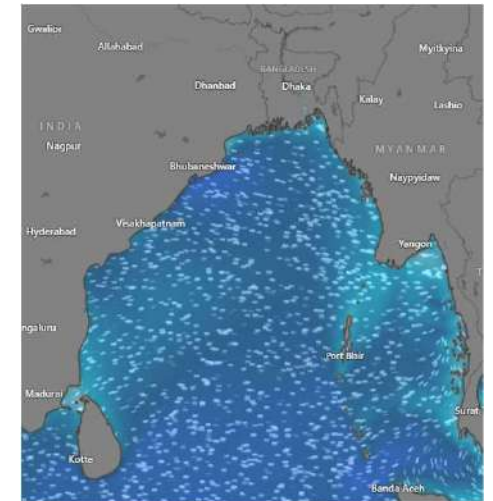
**17 Mar 2025**



**18 Mar 2025**



**19 Mar 2025**



Significant wave height (m)



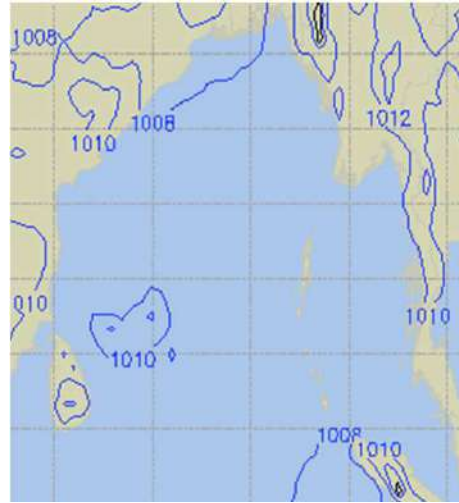
## PREDICTED SURFACE PRESSURE FORECAST (12 to 18 Mar 2025)



**12 Mar 2025**



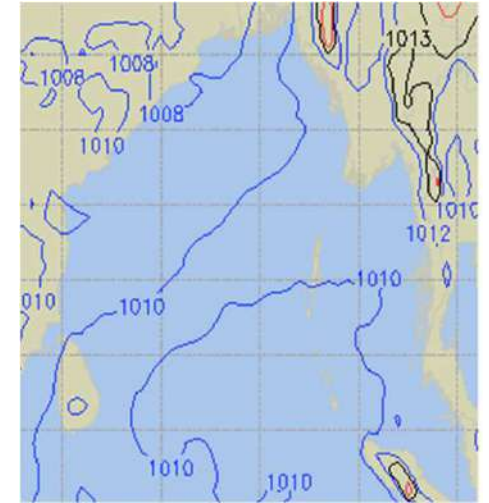
**13 Mar 2025**



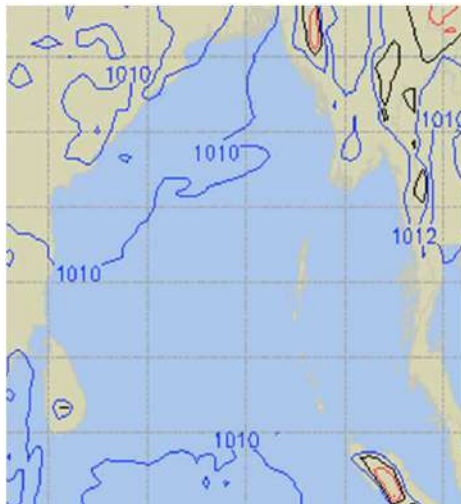
**14 Mar 2025**



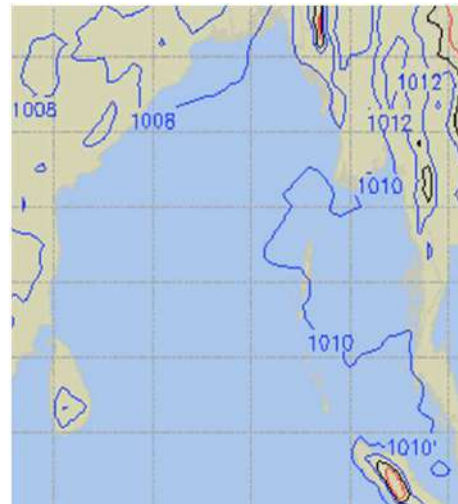
**15 Mar 2025**



**16 Mar 2025**



**17 Mar 2025**



**18 Mar 2025**

