



SUMMARY OF MARINE WEATHER FORECAST
COASTAL AREA OF BANGLADESH
DATE: 12 to 19 Feb 2025



Fleet forecast	Seasonal low lies over south Bay, extending its trough to North Bay.
Wind direction, speed	West/North-westerly 7 kts, (Temporary gusting up to 17 kts).
Wave height & sea state	Wave height: 0.1 to 0.9 m (Sea state:1 to 3).
Sea surface temperature	21°C - 26°C (May remain nearly unchanged).
Baro pressure	1010-1015 mb.
Rainfall	Temporary partly cloudy sky over Bay of Bengal & adjoining area.
Fog	Light to moderate fog may occur over the coastal area during late night to early morning.

Outlook for 12 to 19 Feb 2025: Weather may remain dry with temporary partly cloudy sky. Night and day temperature may rise.



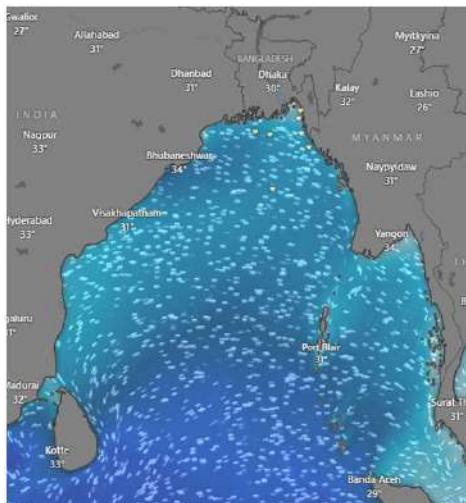
MARINE WEATHER FORECAST (12 to 19 Feb 2025)

PATENGA POINT (22° 12' N, 091° 38' E)

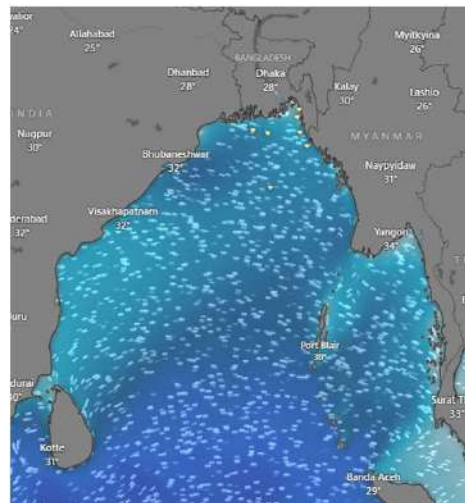


Date	Time	Air Temp (°C)		Sea Surface Temp (°C)	Baro Pressure (mbar)	Wind Direction	Wind Spd (kts)		Wave Ht (m)	Sea State	Humidity (%)	Prob of Rain (%)	Amount of Rain (mm)
		Max	Min				Gusting	Avg					
12-02-25 (Wednesday)	0001	28	16	22	1012	SSE	8	5	0.2	2	95	5	0.0
	0600			21	1015	SSE	9	5	0.2	2	96	8	0.0
	1200			25	1012	SSW	9	6	0.1	1	67	2	0.0
	1800			22	1013	S	10	4	0.1	1	84	7	0.0
13-02-25 (Thursday)	0001	28	16	22	1012	S	8	5	0.1	1	97	6	0.0
	0600			21	1015	SE	8	6	0.2	2	98	7	0.0
	1200			25	1012	SW	9	6	0.1	1	72	2	0.0
	1800			22	1013	SSW	9	8	0.3	2	91	6	0.0
14-02-25 (Friday)	0001	28	17	22	1012	SSW	13	9	0.3	2	96	6	0.0
	0600			21	1015	SW	13	4	0.2	2	97	8	0.0
	1200			25	1012	NW	8	6	0.2	2	66	2	0.0
	1800			22	1013	SSW	10	3	0.1	1	73	7	0.0
15-02-25 (Saturday)	0001	28	17	22	1012	NNW	5	2	0.1	1	96	7	0.0
	0600			21	1015	NE	8	4	0.1	1	98	8	0.0
	1200			25	1012	W	9	5	0.1	1	67	2	0.0
	1800			22	1013	W	10	4	0.1	1	72	6	0.0

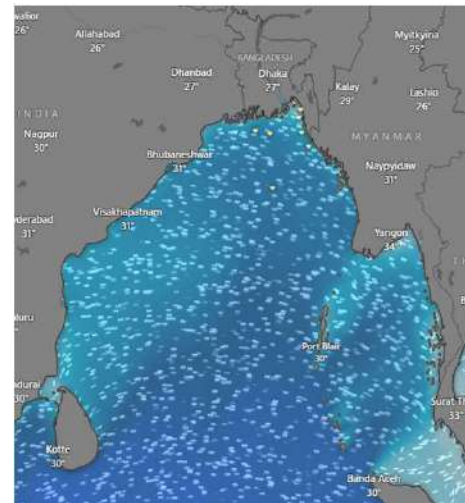
12 Feb 2025



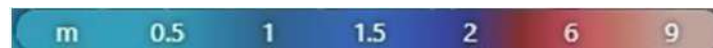
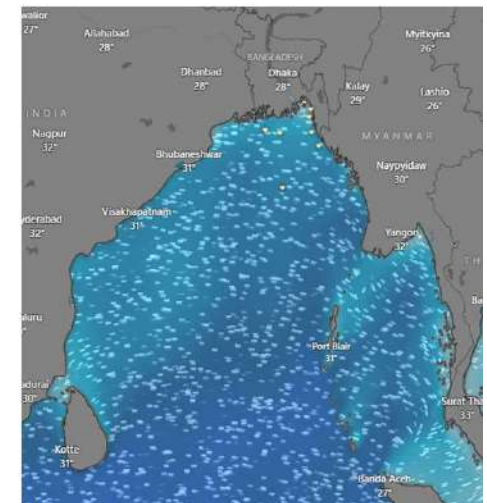
13 Feb 2025



14 Feb 2025



15 Feb 2025



Significant wave height (m)



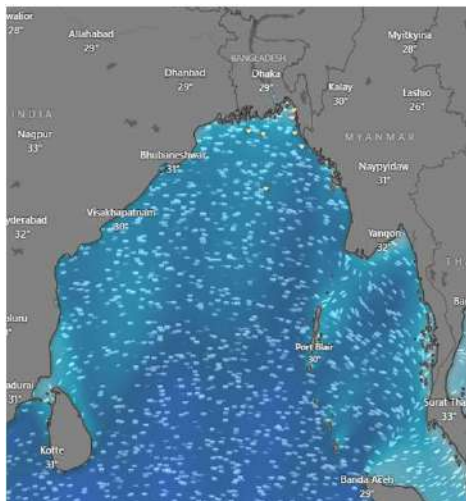
MARINE WEATHER FORECAST (12 to 19 Feb 2025)

PATENGA POINT (22° 12' N, 091° 38' E)

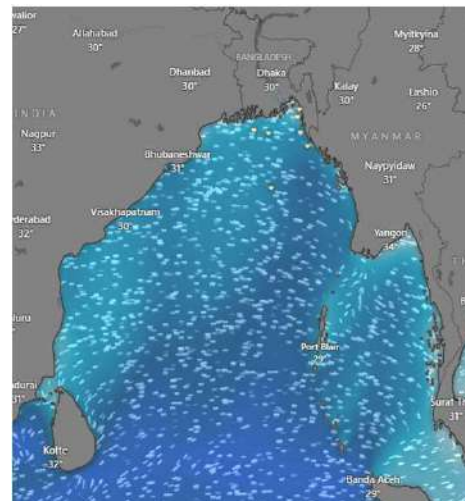


Date	Time	Air Temp (°C)		Sea Surface Temp (°C)	Baro Pressure (mbar)	Wind Direction	Wind Spd (kts)		Wave Ht (m)	Sea State	Humidity (%)	Prob of Rain (%)	Amount of Rain (mm)
		Max	Min				Gusting	Avg					
16-02-25 (Sunday)	0001	28	17	23	1012	W	8	4	0.1	1	91	6	0.0
	0600			22	1015	NNE	8	4	0.2	2	94	9	0.0
	1200			25	1012	NW	11	7	0.1	1	52	2	0.0
	1800			24	1013	NW	7	4	0.1	1	67	6	0.0
17-02-25 (Monday)	0001	28	17	23	1012	NNW	6	2	0.1	1	90	7	0.0
	0600			22	1015	NNE	11	5	0.2	2	92	9	0.0
	1200			25	1012	W	11	7	0.1	1	52	2	0.0
	1800			24	1013	W	7	6	0.2	2	66	8	0.0
18-02-25 (Tuesday)	0001	28	17	23	1012	NW	7	3	0.1	1	90	8	0.0
	0600			22	1015	NE	6	3	0.1	1	92	9	0.0
	1200			25	1012	W	8	5	0.1	1	60	2	0.0
	1800			24	1013	W	12	4	0.1	1	79	6	0.0
19-02-25 (Wednesday)	0001	28	17	23	1012	NW	7	3	0.1	1	89	6	0.0
	0600			22	1015	NNE	6	3	0.1	1	93	8	0.0
	1200			25	1012	NNW	12	8	0.2	2	62	2	0.0
	1800			24	1013	W	13	6	0.2	2	76	5	0.0

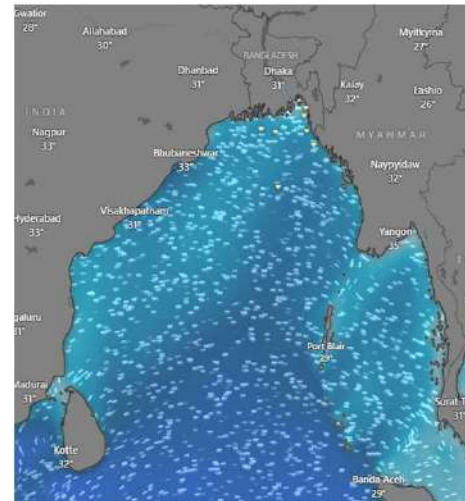
16 Feb 2025



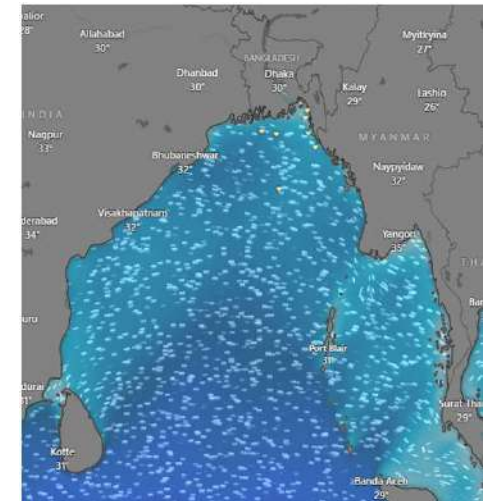
17 Feb 2025



18 Feb 2025



19 Feb 2025



Significant wave height (m)



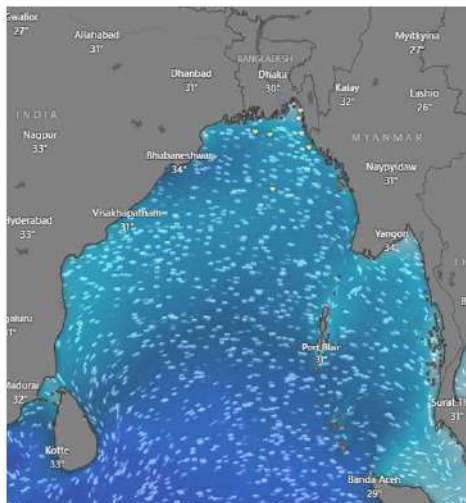
MARINE WEATHER FORECAST (12 to 19 Feb 2025)

ABEAM TO KUTUBDIA (21° 51' N, 091° 40' E)

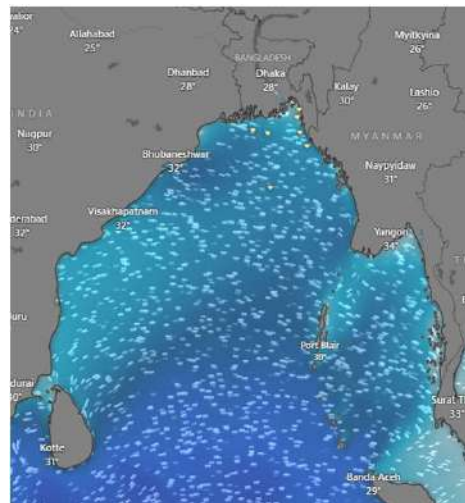


Date	Time	Air Temp (°C)		Sea Surface Temp (°C)	Baro Pressure (mbar)	Wind Direction	Wind Spd (kts)		Wave Ht (m)	Sea State	Humidity (%)	Prob of Rain (%)	Amount of Rain (mm)
		Max	Min				Gusting	Avg					
12-02-25 (Wednesday)	0001	28	16	23	1012	SSW	7	5	0.2	2	95	7	0.0
	0600			22	1015	SSE	8	6	0.2	2	98	8	0.0
	1200			24	1012	SSE	8	5	0.2	2	67	2	0.0
	1800			23	1013	S	8	6	0.2	2	86	5	0.0
13-02-25 (Thursday)	0001	28	16	23	1012	SSW	9	6	0.3	2	97	6	0.0
	0600			22	1015	SSE	10	8	0.3	2	99	8	0.0
	1200			24	1012	S	8	6	0.3	2	73	2	0.0
	1800			23	1013	SSW	13	10	0.3	2	92	7	0.0
14-02-25 (Friday)	0001	28	16	23	1012	SSW	13	10	0.4	2	96	7	0.0
	0600			22	1015	W	10	7	0.4	2	98	8	0.0
	1200			24	1012	N	9	6	0.3	2	71	2	0.0
	1800			23	1013	SSW	5	3	0.3	2	74	6	0.0
15-02-25 (Saturday)	0001	28	16	23	1012	SW	8	4	0.3	2	97	6	0.0
	0600			22	1015	SE	9	6	0.2	2	98	8	0.0
	1200			24	1012	W	6	3	0.3	2	72	2	0.0
	1800			23	1013	W	7	5	0.3	2	75	5	0.0

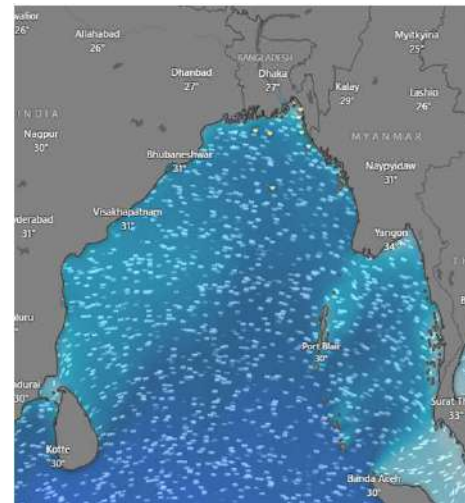
12 Feb 2025



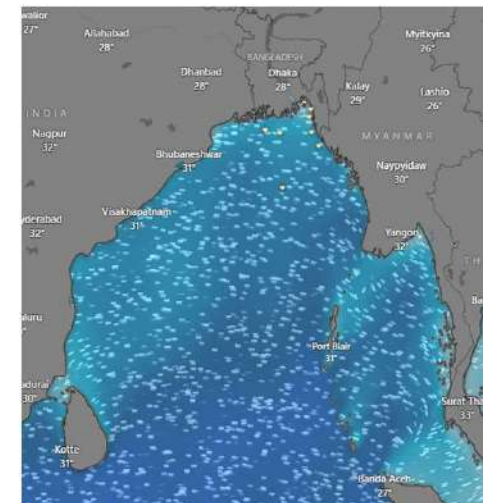
13 Feb 2025



14 Feb 2025



15 Feb 2025



Significant wave height (m)



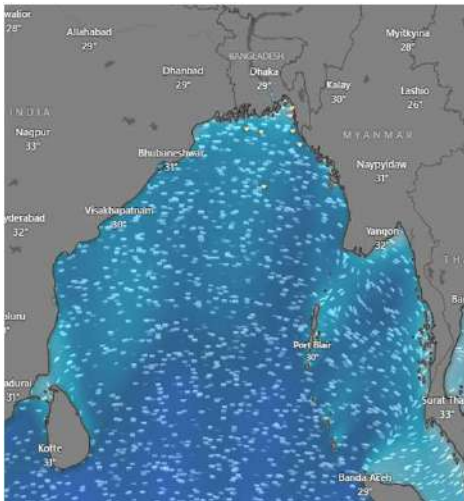
MARINE WEATHER FORECAST (12 to 19 Feb 2025)

ABEAM TO KUTUBDIA (21° 51' N, 091° 40' E)

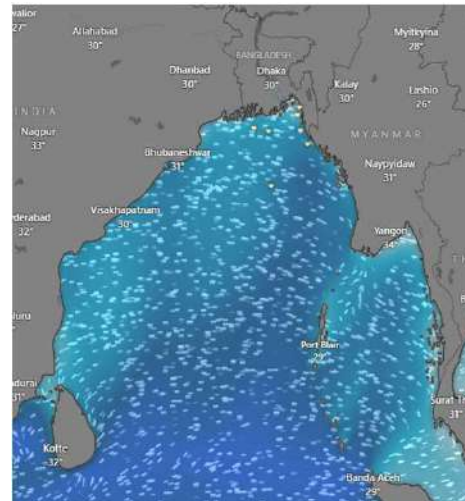


Date	Time	Air Temp (°C)		Sea Surface Temp (°C)	Baro Pressure (mbar)	Wind Direction	Wind Spd (kts)		Wave Ht (m)	Sea State	Humidity (%)	Prob of Rain (%)	Amount of Rain (mm)
		Max	Min				Gusting	Avg					
16-02-25 (Sunday)	0001	28	16	23	1012	W	8	6	0.3	2	91	8	0.0
	0600			22	1014	NNE	10	7	0.3	2	94	9	0.0
	1200			24	1011	NNW	8	6	0.2	2	54	2	0.0
	1800			23	1013	NNW	8	5	0.2	2	67	7	0.0
17-02-25 (Monday)	0001	28	17	23	1012	NNW	9	6	0.2	2	90	6	0.0
	0600			22	1014	NNE	9	6	0.3	2	92	9	0.0
	1200			24	1011	NNW	9	7	0.3	2	52	2	0.0
	1800			23	1013	NNW	10	8	0.3	2	67	7	0.0
18-02-25 (Tuesday)	0001	28	17	23	1012	NNW	10	7	0.2	2	91	5	0.0
	0600			22	1014	NNE	9	5	0.2	2	94	8	0.0
	1200			24	1011	NNW	7	4	0.2	2	62	2	0.0
	1800			23	1013	W	7	6	0.2	2	76	7	0.0
19-02-25 (Wednesday)	0001	28	17	23	1012	NNW	9	6	0.3	2	92	6	0.0
	0600			22	1014	NNE	8	3	0.2	2	95	8	0.0
	1200			24	1011	NNW	9	7	0.2	2	61	2	0.0
	1800			23	1013	W	10	8	0.2	2	74	5	0.0

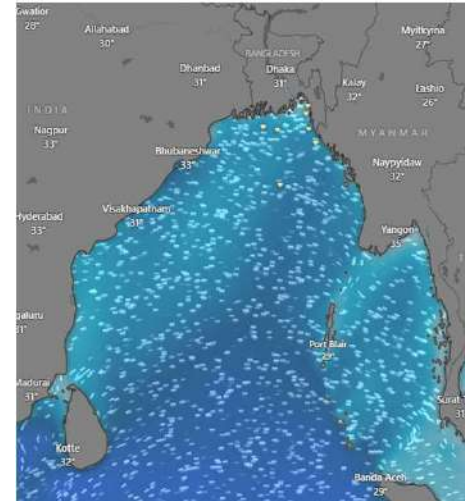
16 Feb 2025



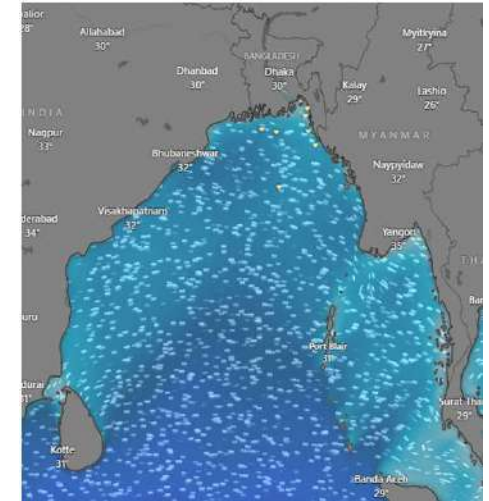
17 Feb 2025



18 Feb 2025



19 Feb 2025



Significant wave height (m)

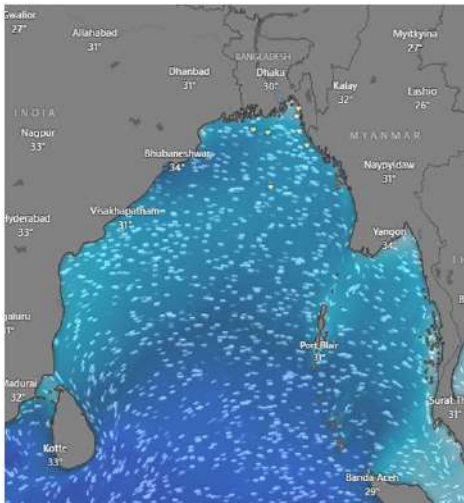


MARINE WEATHER FORECAST (12 to 19 Feb 2025) ABEAM TO ELEPHANT POINT (21° 11' N, 091° 52' E)



Date	Time	Air Temp (°C)		Sea Surface Temp (°C)	Baro Pressure (mbar)	Wind Direction	Wind Spd (kts)		Wave Ht (m)	Sea State	Humidity (%)	Prob of Rain (%)	Amount of Rain (mm)
		Max	Min				Gusting	Avg					
12-02-25 (Wednesday)	0001	28	16	23	1012	SSW	6	4	0.5	2	94	7	0.0
	0600			22	1014	E	5	3	0.5	2	96	8	0.0
	1200			25	1012	SSE	7	2	0.5	2	69	2	0.0
	1800			23	1013	SSW	7	5	0.5	2	85	6	0.0
13-02-25 (Thursday)	0001	28	16	23	1012	SSW	11	5	0.6	3	97	8	0.0
	0600			22	1014	NNE	8	6	0.5	2	98	9	0.0
	1200			25	1012	SSE	5	2	0.5	2	73	2	0.0
	1800			23	1013	SSW	12	8	0.6	3	90	7	0.0
14-02-25 (Friday)	0001	28	17	23	1012	SSW	11	8	0.7	3	97	8	0.0
	0600			22	1014	W	10	6	0.7	3	99	9	0.0
	1200			25	1012	NNW	6	3	0.7	3	72	2	0.0
	1800			23	1013	SW	8	3	0.6	3	76	7	0.0
15-02-25 (Saturday)	0001	28	17	23	1012	SSW	8	6	0.6	3	94	5	0.0
	0600			22	1014	NNE	9	7	0.6	3	96	7	0.0
	1200			25	1012	SSW	9	3	0.6	3	72	2	0.0
	1800			23	1013	NNW	10	6	0.6	3	75	4	0.0

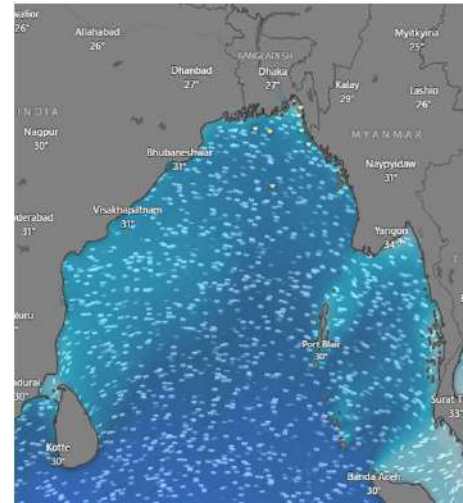
12 Feb 2025



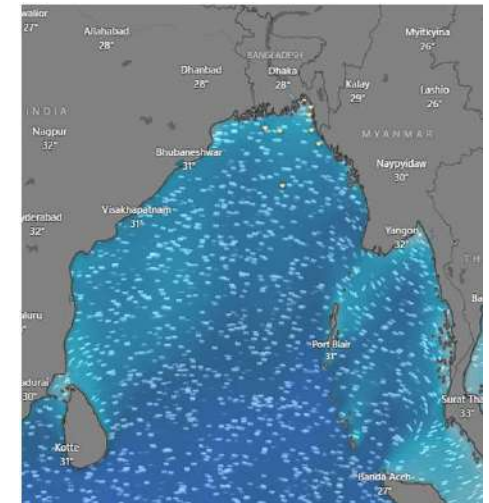
13 Feb 2025



14 Feb 2025



15 Feb 2025



Significant wave height (m)

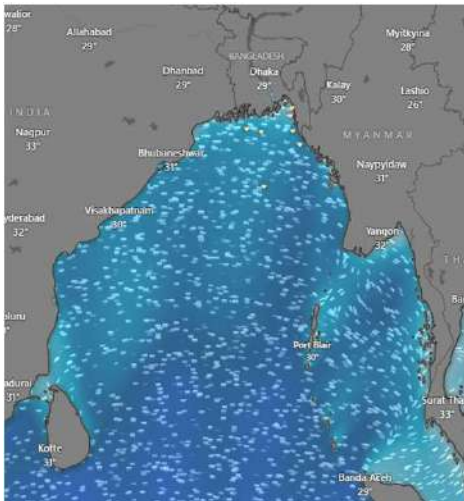


MARINE WEATHER FORECAST (12 to 19 Feb 2025) ABEAM TO ELEPHANT POINT (21° 11' N, 091° 52' E)

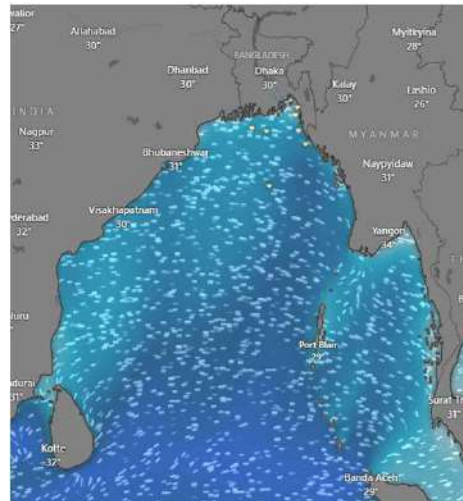


Date	Time	Air Temp (°C)		Sea Surface Temp (°C)	Baro Pressure (mbar)	Wind Direction	Wind Spd (kts)		Wave Ht (m)	Sea State	Humidity (%)	Prob of Rain (%)	Amount of Rain (mm)
		Max	Min				Gusting	Avg					
16-02-25 (Sunday)	0001	28	17	23	1012	NNW	10	5	0.7	3	93	6	0.0
	0600			22	1015	N	10	7	0.7	3	96	8	0.0
	1200			24	1012	NNW	10	8	0.7	3	72	2	0.0
	1800			22	1013	NNW	12	8	0.8	3	86	5	0.0
17-02-25 (Monday)	0001	28	17	23	1012	NNW	10	6	0.8	3	92	8	0.0
	0600			22	1015	N	11	8	0.8	3	94	9	0.0
	1200			24	1012	NNW	11	9	0.7	3	71	2	0.0
	1800			22	1013	NNW	14	10	0.8	3	87	5	0.0
18-02-25 (Tuesday)	0001	28	17	23	1012	N	13	7	0.7	3	92	6	0.0
	0600			22	1015	N	9	7	0.7	3	96	8	0.0
	1200			24	1012	NNW	9	7	0.7	3	71	2	0.0
	1800			22	1013	NNW	11	8	0.7	3	87	6	0.0
19-02-25 (Wednesday)	0001	28	17	23	1012	NNW	10	5	0.6	3	95	6	0.0
	0600			22	1015	NNW	8	6	0.5	2	97	7	0.0
	1200			24	1012	NW	10	9	0.6	3	72	2	0.0
	1800			22	1013	NW	12	8	0.6	3	86	5	0.0

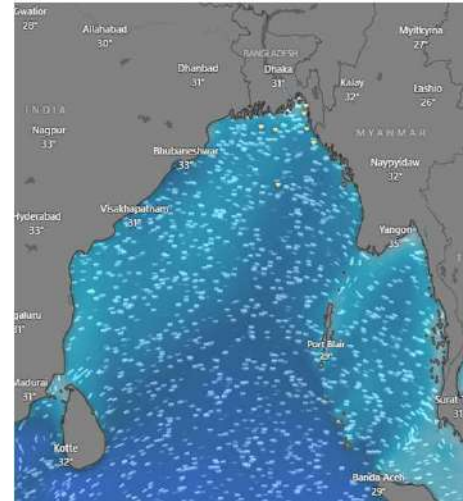
16 Feb 2025



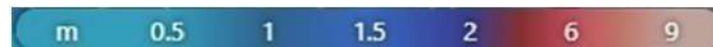
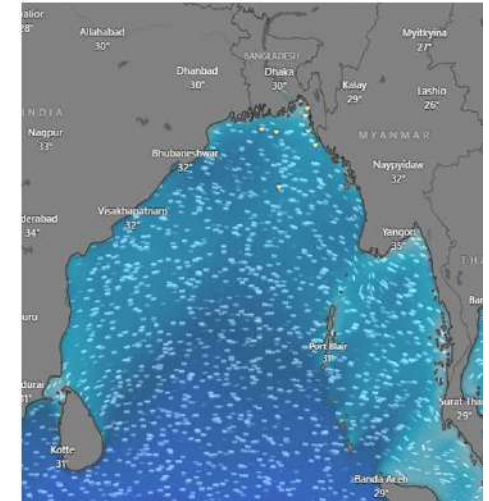
17 Feb 2025



18 Feb 2025



19 Feb 2025



Significant wave height (m)



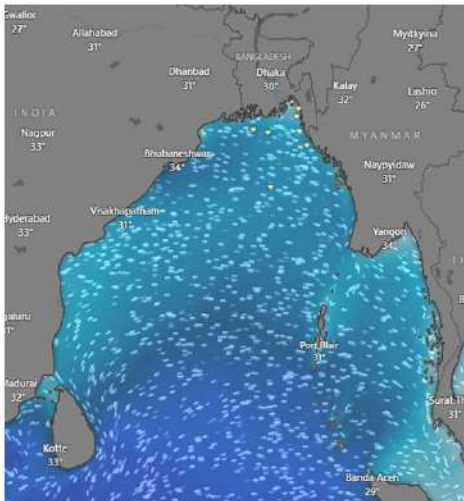
MARINE WEATHER FORECAST (12 to 19 Feb 2025)

ABEAM TO ST. MARTIN'S LIGHT HOUSE (20° 37' N, 092° 08' E)



Date	Time	Air Temp (°C)		Sea Surface Temp (°C)	Baro Pressure (mbar)	Wind Direction	Wind Spd (kts)		Wave Ht (m)	Sea State	Humidity (%)	Prob of Rain (%)	Amount of Rain (mm)
		Max	Min				Gusting	Avg					
12-02-25 (Wednesday)	0001	29	16	23	1012	NNW	8	5	0.5	2	91	7	0.0
	0600			22	1015	N	9	6	0.5	2	96	9	0.0
	1200			25	1012	NW	7	3	0.5	2	53	2	0.0
	1800			23	1013	W	10	6	0.6	3	76	6	0.0
13-02-25 (Thursday)	0001	29	17	23	1012	NW	11	8	0.6	3	89	6	0.0
	0600			22	1015	NNE	10	7	0.6	3	94	8	0.0
	1200			25	1012	SSW	5	3	0.6	3	55	2	0.0
	1800			23	1013	SSW	11	8	0.6	3	74	7	0.0
14-02-25 (Friday)	0001	29	17	23	1012	W	11	6	0.7	3	91	5	0.0
	0600			22	1015	NNW	11	4	0.7	3	96	8	0.0
	1200			25	1012	S	7	3	0.7	3	54	2	0.0
	1800			23	1013	W	9	5	0.7	3	74	6	0.0
15-02-25 (Saturday)	0001	29	17	23	1012	W	10	8	0.7	3	92	7	0.0
	0600			22	1015	NNW	10	7	0.7	3	96	8	0.0
	1200			25	1012	SSW	11	2	0.7	3	53	2	0.0
	1800			23	1013	NW	11	8	0.6	3	76	6	0.0

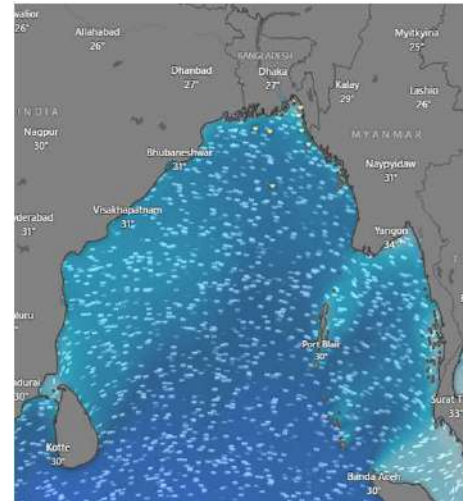
12 Feb 2025



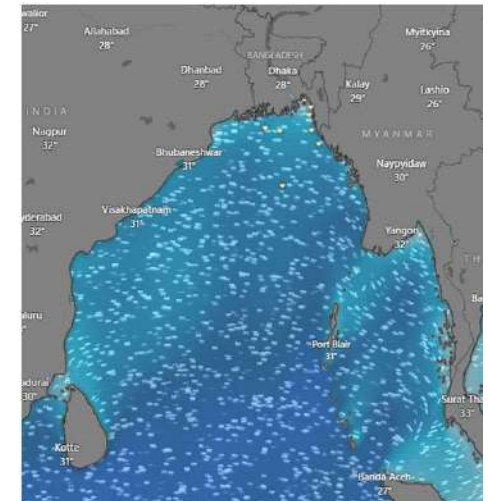
13 Feb 2025



14 Feb 2025



15 Feb 2025



Significant wave height (m)



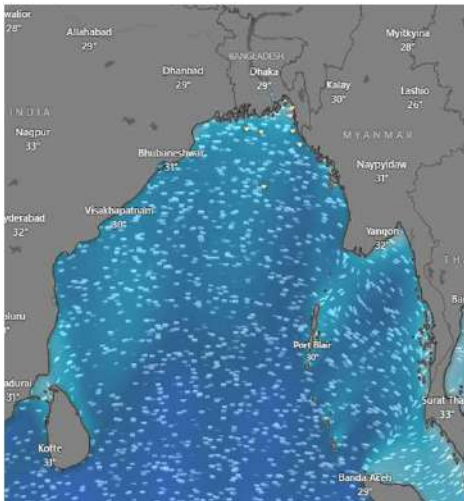
MARINE WEATHER FORECAST (12 to 19 Feb 2025)

ABEAM TO ST. MARTIN'S LIGHT HOUSE (20° 37' N, 092° 08' E)

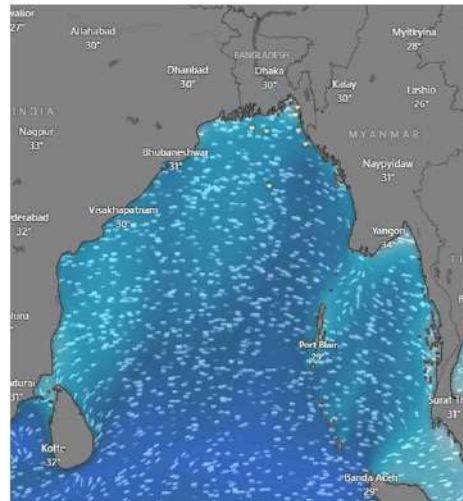


Date	Time	Air Temp (°C)		Sea Surface Temp (°C)	Baro Pressure (mbar)	Wind Direction	Wind Spd (kts)		Wave Ht (m)	Sea State	Humidity (%)	Prob of Rain (%)	Amount of Rain (mm)
		Max	Min				Gusting	Avg					
16-02-25 (Sunday)	0001	28	17	23	1012	NNW	13	8	0.7	3	93	8	0.0
	0600			22	1014	N	13	9	0.7	3	96	9	0.0
	1200			25	1010	NNW	11	9	0.7	3	73	2	0.0
	1800			24	1013	NNW	15	12	0.8	3	86	7	0.0
17-02-25 (Monday)	0001	28	17	23	1012	NNW	15	11	0.8	3	93	7	0.0
	0600			22	1014	N	15	11	0.8	3	96	8	0.0
	1200			25	1010	NNW	14	10	0.7	3	74	2	0.0
	1800			24	1013	NNW	16	12	0.8	3	86	6	0.0
18-02-25 (Tuesday)	0001	28	17	23	1012	N	15	10	0.7	3	94	8	0.0
	0600			22	1014	N	14	10	0.7	3	96	9	0.0
	1200			25	1010	NNW	13	9	0.7	3	72	2	0.0
	1800			24	1013	NNW	15	12	0.7	3	85	4	0.0
19-02-25 (Wednesday)	0001	28	17	23	1012	NNW	15	10	0.6	3	93	7	0.0
	0600			22	1014	NNW	14	7	0.6	3	96	9	0.0
	1200			25	1010	NNW	13	10	0.6	3	74	2	0.0
	1800			24	1013	NNW	16	11	0.6	3	86	5	0.0

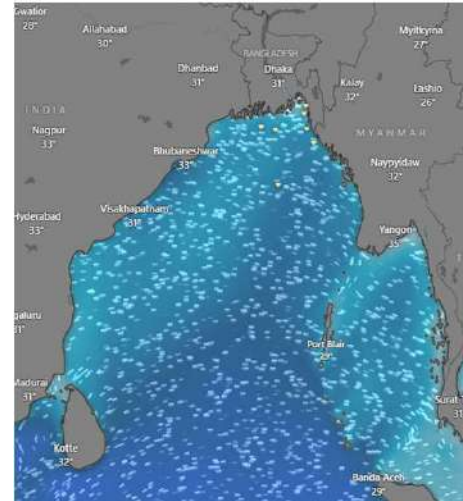
16 Feb 2025



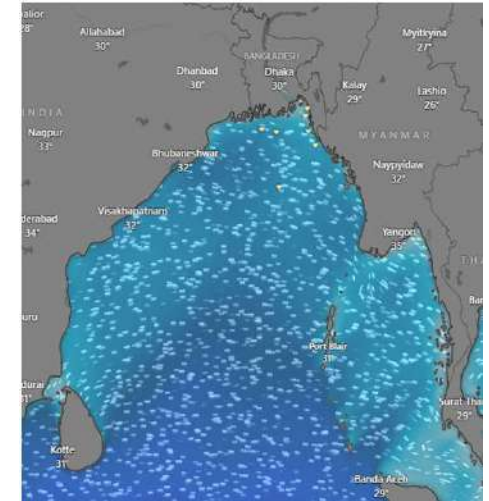
17 Feb 2025



18 Feb 2025



19 Feb 2025



Significant wave height (m)



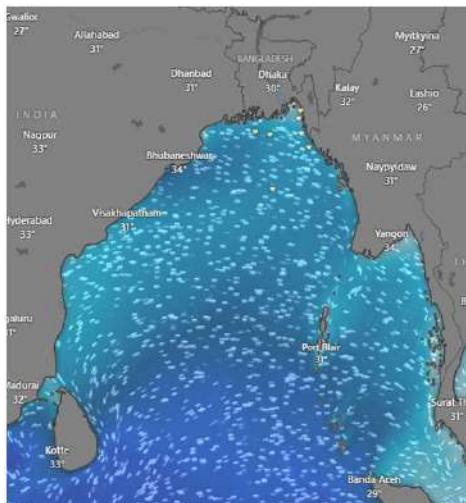
MARINE WEATHER FORECAST (12 to 19 Feb 2025)

PAYRA FAIRWAY (21° 22' N, 090° 6' E)

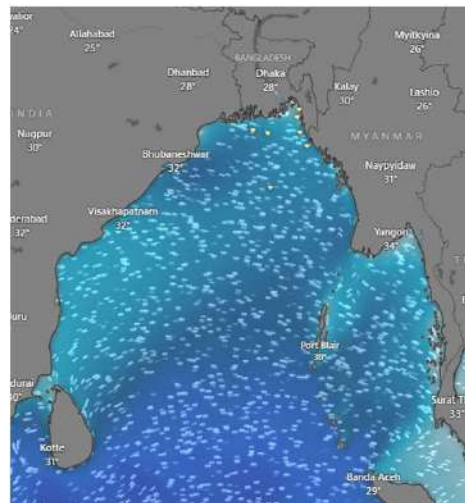


Date	Time	Air Temp (°C)		Sea Surface Temp (°C)	Baro Pressure (mbar)	Wind Direction	Wind Spd (kts)		Wave Ht (m)	Sea State	Humidity (%)	Prob of Rain (%)	Amount of Rain (mm)
		Max	Min				Gusting	Avg					
12-02-25 (Wednesday)	0001	28	17	23	1012	SSW	11	8	0.6	3	91	7	0.0
	0600			22	1015	SW	10	7	0.6	3	96	8	0.0
	1200			24	1012	S	10	5	0.6	3	57	2	0.0
	1800			23	1013	SSW	11	9	0.7	3	83	6	0.0
13-02-25 (Thursday)	0001	28	17	23	1012	SSW	12	9	0.7	3	92	6	0.0
	0600			22	1015	SSW	9	7	0.7	3	93	7	0.0
	1200			24	1012	S	11	9	0.7	3	53	2	0.0
	1800			23	1013	SSW	12	10	0.8	3	82	5	0.0
14-02-25 (Friday)	0001	28	17	23	1012	SSW	14	10	0.8	3	91	8	0.0
	0600			22	1015	SSW	12	7	0.8	3	93	7	0.0
	1200			24	1012	S	11	8	0.8	3	54	2	0.0
	1800			23	1013	SSW	9	6	0.7	3	81	5	0.0
15-02-25 (Saturday)	0001	28	17	23	1012	SSW	11	7	0.7	3	92	6	0.0
	0600			22	1015	SSW	6	3	0.7	3	94	9	0.0
	1200			24	1012	S	5	2	0.6	3	53	2	0.0
	1800			23	1013	SSW	6	3	0.6	3	82	4	0.0

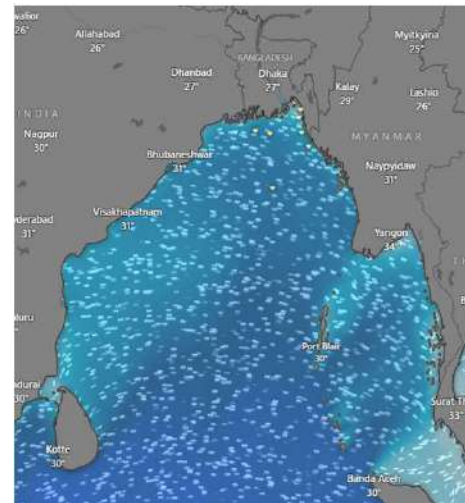
12 Feb 2025



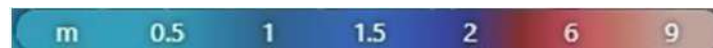
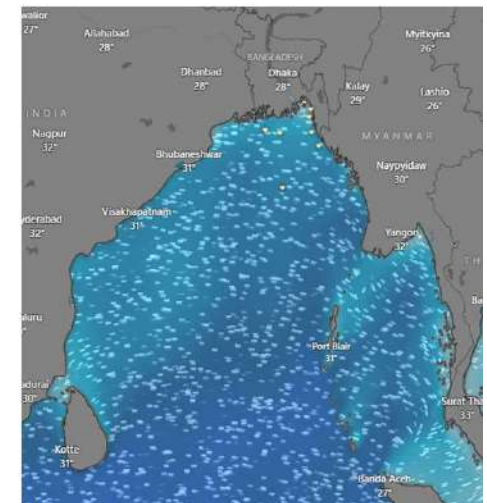
13 Feb 2025



14 Feb 2025



15 Feb 2025



Significant wave height (m)



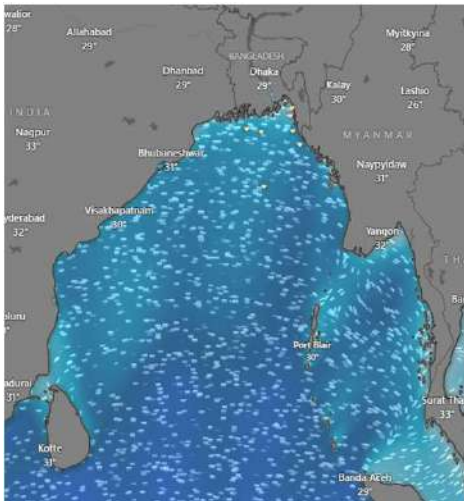
MARINE WEATHER FORECAST (12 to 19 Feb 2025)

PAYRA FAIRWAY (21° 22' N, 090° 6' E)

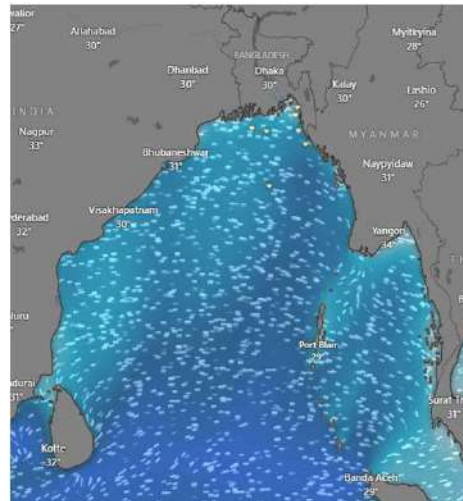


Date	Time	Air Temp (°C)		Sea Surface Temp (°C)	Baro Pressure (mbar)	Wind Direction	Wind Spd (kts)		Wave Ht (m)	Sea State	Humidity (%)	Prob of Rain (%)	Amount of Rain (mm)
		Max	Min				Gusting	Avg					
16-02-25 (Sunday)	0001	28	17	23	1012	NNW	9	6	0.6	3	92	7	0.0
	0600			22	1014	NNE	6	3	0.6	3	94	9	0.0
	1200			24	1011	NNE	6	4	0.6	3	72	2	0.0
	1800			24	1013	W	7	3	0.6	3	84	6	0.0
17-02-25 (Monday)	0001	28	17	23	1012	W	6	4	0.6	3	93	6	0.0
	0600			22	1014	NNW	6	4	0.6	3	94	9	0.0
	1200			24	1011	N	8	5	0.6	3	73	2	0.0
	1800			24	1013	SSW	6	4	0.6	3	82	7	0.0
18-02-25 (Tuesday)	0001	28	17	23	1012	W	7	5	0.6	3	93	6	0.0
	0600			22	1014	NNW	8	3	0.6	3	94	9	0.0
	1200			24	1011	N	7	5	0.6	3	73	2	0.0
	1800			24	1013	SSW	8	3	0.6	3	82	7	0.0
19-02-25 (Wednesday)	0001	28	17	23	1012	W	9	6	0.7	3	94	5	0.0
	0600			22	1014	NNW	8	2	0.7	3	94	8	0.0
	1200			24	1011	N	7	3	0.6	3	73	2	0.0
	1800			24	1013	SSW	8	6	0.6	3	81	4	0.0

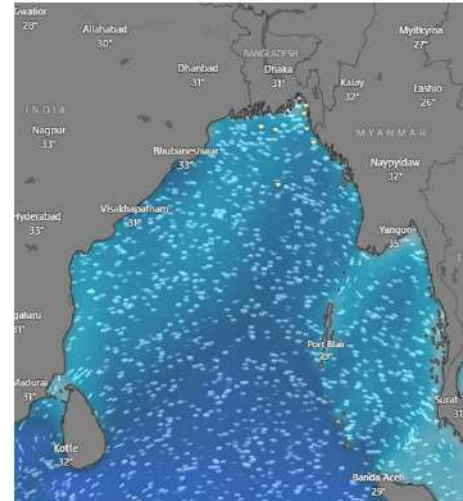
16 Feb 2025



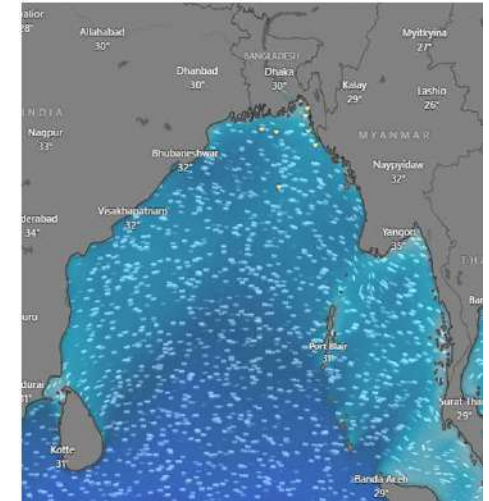
17 Feb 2025



18 Feb 2025



19 Feb 2025



Significant wave height (m)



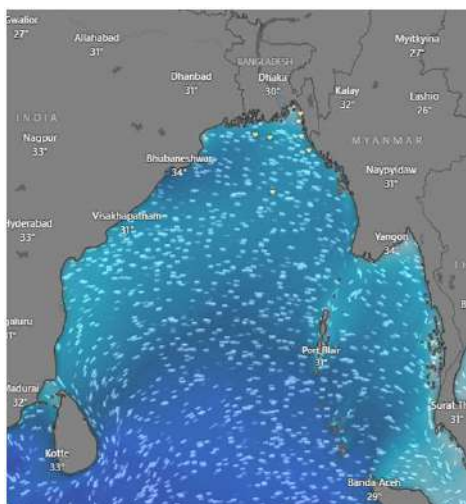
MARINE WEATHER FORECAST (12 to 19 Feb 2025)

MONGLA FAIRWAY (21° 26' N, 089° 34' E)

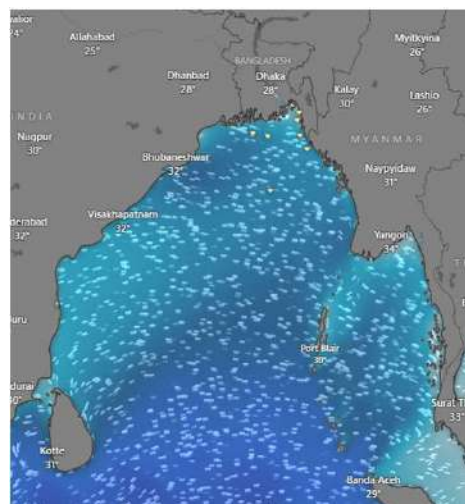


Date	Time	Air Temp (°C)		Sea Surface Temp (°C)	Baro Pressure (mbar)	Wind Direction	Wind Spd (kts)		Wave Ht (m)	Sea State	Humidity (%)	Prob of Rain (%)	Amount of Rain (mm)
		Max	Min				Gusting	Avg					
12-02-25 (Wednesday)	0001	28	16	23	1012	SSW	13	10	0.7	3	91	6	0.0
	0600			22	1014	SSW	11	9	0.7	3	93	9	0.0
	1200			24	1011	SSW	11	6	0.7	3	54	2	0.0
	1800			23	1013	S	11	9	0.7	3	76	8	0.0
13-02-25 (Thursday)	0001	28	16	23	1012	S	12	9	0.7	3	87	6	0.0
	0600			22	1014	S	11	7	0.7	3	92	9	0.0
	1200			24	1011	SSW	12	9	0.8	3	55	2	0.0
	1800			23	1013	SSW	13	11	0.8	3	76	8	0.0
14-02-25 (Friday)	0001	28	16	23	1012	SSW	14	11	0.8	3	89	7	0.0
	0600			22	1014	NNW	13	6	0.8	3	92	9	0.0
	1200			24	1011	NNE	15	11	0.8	3	54	2	0.0
	1800			23	1013	SSE	10	7	0.8	3	74	6	0.0
15-02-25 (Saturday)	0001	28	16	23	1012	SSW	9	6	0.7	3	92	6	0.0
	0600			22	1014	SSW	8	5	0.7	3	94	9	0.0
	1200			24	1011	SSW	6	3	0.7	3	53	2	0.0
	1800			23	1013	SSW	8	5	0.7	3	76	5	0.0

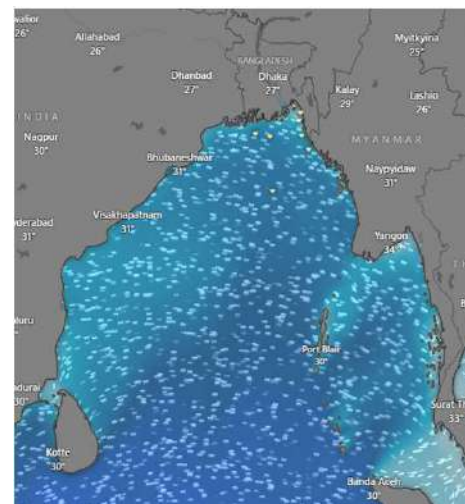
12 Feb 2025



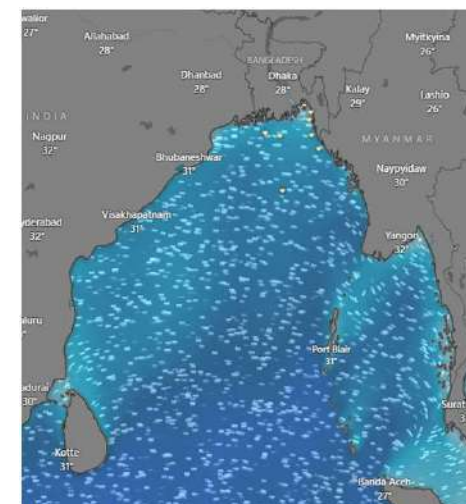
13 Feb 2025



14 Feb 2025



15 Feb 2025



Significant wave height (m)



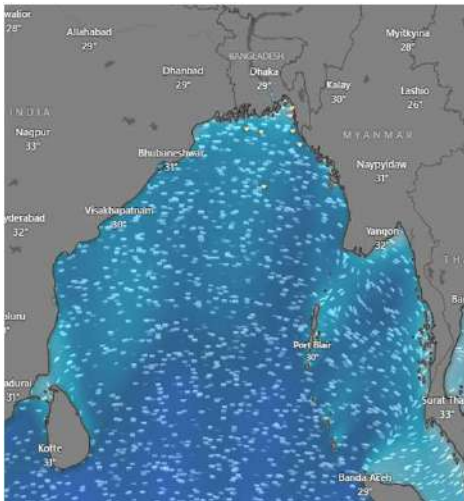
MARINE WEATHER FORECAST (12 to 19 Feb 2025)

MONGLA FAIRWAY (21° 26' N, 089° 34' E)

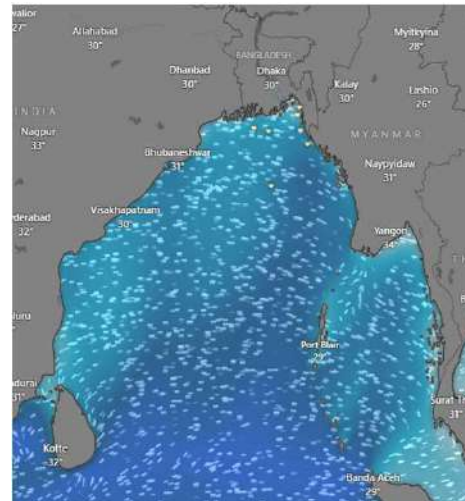


Date	Time	Air Temp (°C)		Sea Surface Temp (°C)	Baro Pressure (mbar)	Wind Direction	Wind Spd (kts)		Wave Ht (m)	Sea State	Humidity (%)	Prob of Rain (%)	Amount of Rain (mm)
		Max	Min				Gusting	Avg					
16-02-25 (Sunday)	0001	28	16	24	1012	SSW	10	6	0.6	3	93	6	0.0
	0600			23	1014	NNW	9	6	0.6	3	96	7	0.0
	1200			25	1011	NNE	7	4	0.7	3	73	2	0.0
	1800			23	1012	SSW	7	5	0.6	3	88	4	0.0
17-02-25 (Monday)	0001	28	16	24	1012	NW	8	4	0.6	3	94	6	0.0
	0600			23	1014	NNW	5	3	0.6	3	96	8	0.0
	1200			25	1011	NNE	6	3	0.6	3	72	2	0.0
	1800			23	1012	SSW	6	4	0.6	3	82	7	0.0
18-02-25 (Tuesday)	0001	28	16	24	1012	NW	7	5	0.5	2	94	8	0.0
	0600			23	1014	NNW	8	6	0.5	2	98	8	0.0
	1200			25	1011	NNE	9	4	0.5	2	73	2	0.0
	1800			23	1012	SSW	7	4	0.6	3	76	6	0.0
19-02-25 (Wednesday)	0001	28	16	24	1012	NW	10	7	0.6	3	94	6	0.0
	0600			23	1014	NNW	11	7	0.6	3	96	8	0.0
	1200			25	1011	NNE	9	3	0.6	3	72	2	0.0
	1800			23	1012	SSW	9	6	0.6	3	81	5	0.0

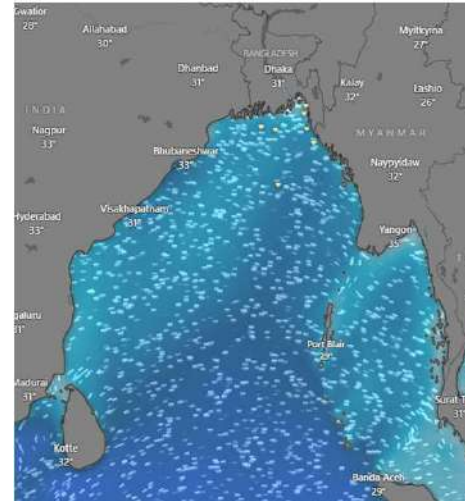
16 Feb 2025



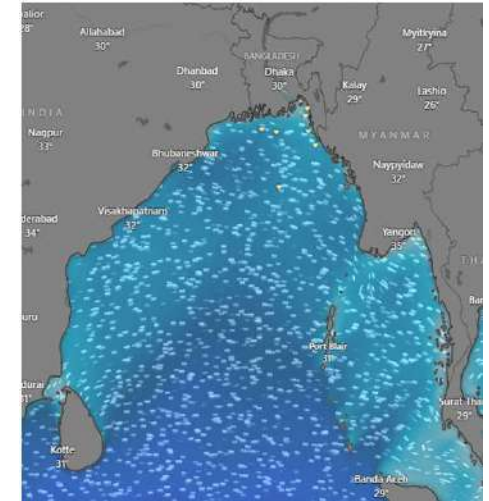
17 Feb 2025



18 Feb 2025



19 Feb 2025



Significant wave height (m)



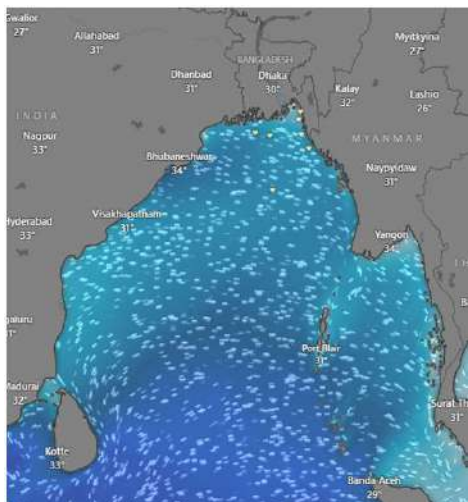
MARINE WEATHER FORECAST (12 to 19 Feb 2025)

OUTER EEZ (18° 48' N, 090° 30' E)

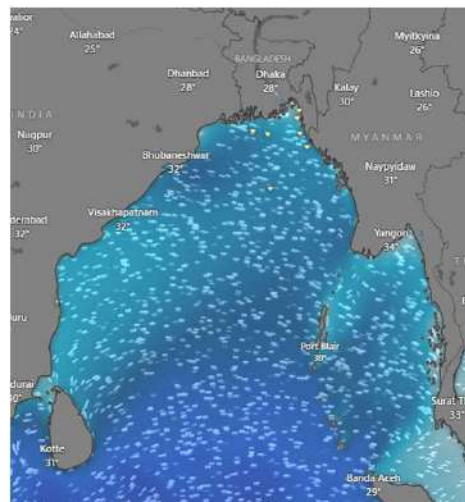


Date	Time	Air Temp (°C)		Sea Surface Temp (°C)	Baro Pressure (mbar)	Wind Direction	Wind Spd (kts)		Wave Ht (m)	Sea State	Humidity (%)	Prob of Rain (%)	Amount of Rain (mm)
		Max	Min				Gusting	Avg					
12-02-25 (Wednesday)	0001	28	17	24	1012	N	8	5	0.6	3	91	6	0.0
	0600			23	1015	SW	9	6	0.6	3	94	9	0.0
	1200			25	1010	SSW	8	3	0.7	3	56	2	0.0
	1800			24	1013	SSE	5	2	0.7	3	82	7	0.0
13-02-25 (Thursday)	0001	28	17	24	1012	SW	7	5	0.7	3	89	6	0.0
	0600			23	1015	SSW	10	7	0.8	3	92	8	0.0
	1200			25	1010	SSW	9	7	0.8	3	54	2	0.0
	1800			24	1013	SSW	9	7	0.8	3	82	6	0.0
14-02-25 (Friday)	0001	28	17	24	1012	W	11	8	0.8	3	90	6	0.0
	0600			23	1015	W	12	9	0.9	3	94	8	0.0
	1200			25	1010	W	11	9	0.9	3	54	2	0.0
	1800			24	1013	W	12	8	0.9	3	75	6	0.0
15-02-25 (Saturday)	0001	28	17	24	1012	W	10	8	0.9	3	92	6	0.0
	0600			23	1015	W	12	9	0.9	3	94	8	0.0
	1200			25	1010	NNW	12	7	0.8	3	54	2	0.0
	1800			24	1013	NNW	9	3	0.8	3	75	5	0.0

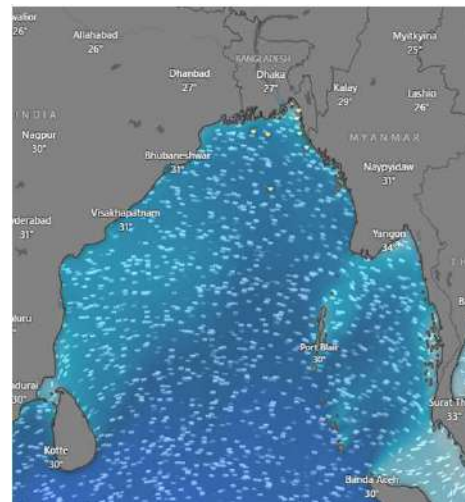
12 Feb 2025



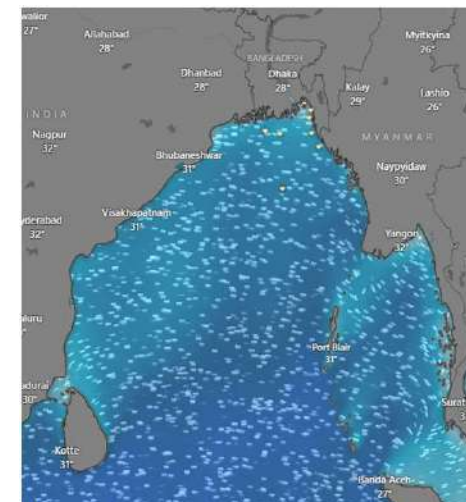
13 Feb 2025



14 Feb 2025



15 Feb 2025



Significant wave height (m)



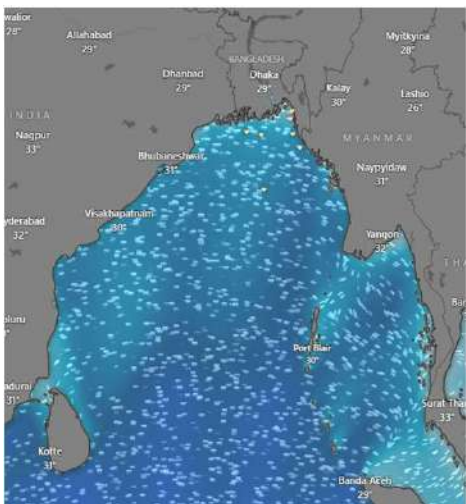
MARINE WEATHER FORECAST (12 to 19 Feb 2025)

OUTER EEZ (18° 48' N, 090° 30' E)

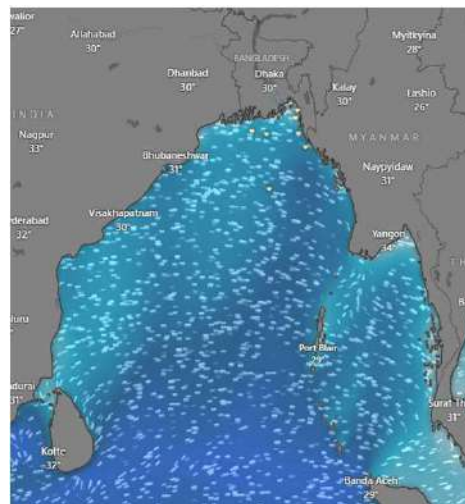


Date	Time	Air Temp (°C)		Sea Surface Temp (°C)	Baro Pressure (mbar)	Wind Direction	Wind Spd (kts)		Wave Ht (m)	Sea State	Humidity (%)	Prob of Rain (%)	Amount of Rain (mm)
		Max	Min				Gusting	Avg					
16-02-25 (Sunday)	0001	28	18	24	1012	W	5	3	0.7	3	92	7	0.0
	0600			23	1015	NNW	9	6	0.7	3	94	9	0.0
	1200			26	1012	NNW	8	6	0.7	3	72	2	0.0
	1800			24	1013	N	7	4	0.7	3	87	5	0.0
17-02-25 (Monday)	0001	28	18	24	1012	NNW	8	6	0.7	3	93	6	0.0
	0600			23	1015	NNW	9	5	0.7	3	96	9	0.0
	1200			26	1012	N	11	5	0.7	3	72	2	0.0
	1800			24	1013	N	8	4	0.7	3	88	6	0.0
18-02-25 (Tuesday)	0001	28	18	24	1012	NNW	9	5	0.8	3	94	7	0.0
	0600			23	1015	N	11	6	0.8	3	97	9	0.0
	1200			26	1012	NNW	9	4	0.7	3	73	2	0.0
	1800			24	1013	NNW	9	7	0.7	3	89	8	0.0
19-02-25 (Wednesday)	0001	28	18	24	1012	NNW	9	6	0.7	3	95	7	0.0
	0600			23	1015	N	11	3	0.7	3	96	8	0.0
	1200			26	1012	NNW	6	2	0.7	3	72	2	0.0
	1800			24	1013	NNW	7	3	0.7	3	81	5	0.0

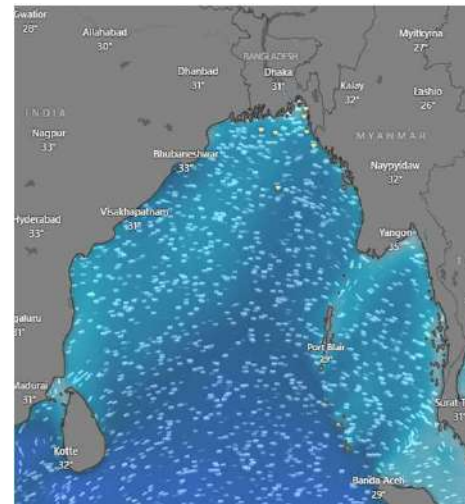
16 Feb 2025



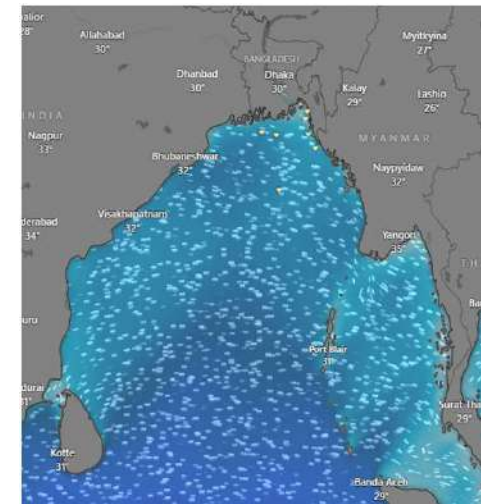
17 Feb 2025



18 Feb 2025



19 Feb 2025



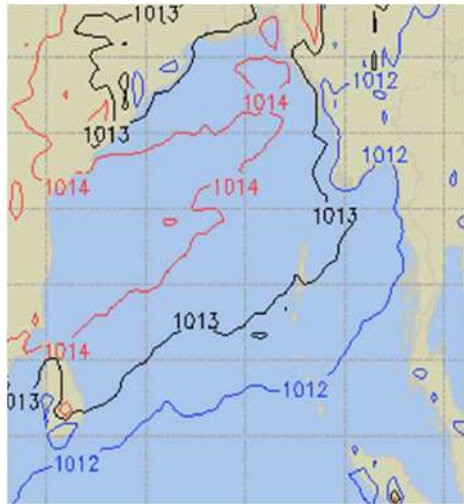
Significant wave height (m)



PREDICTED SURFACE PRESSURE FORECAST (12 to 18 Feb 2025)



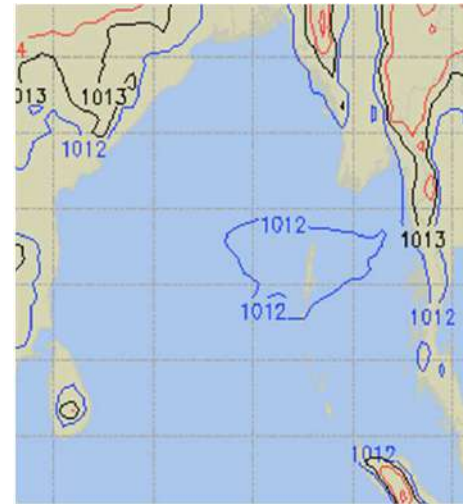
12 Feb 2025



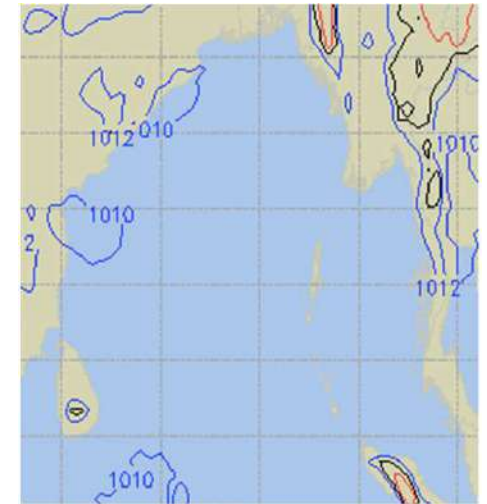
13 Feb 2025



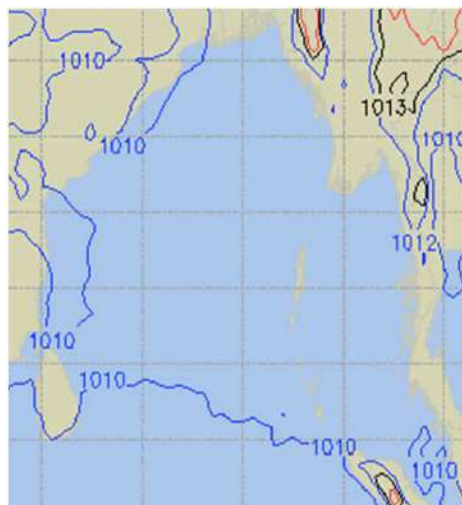
14 Feb 2025



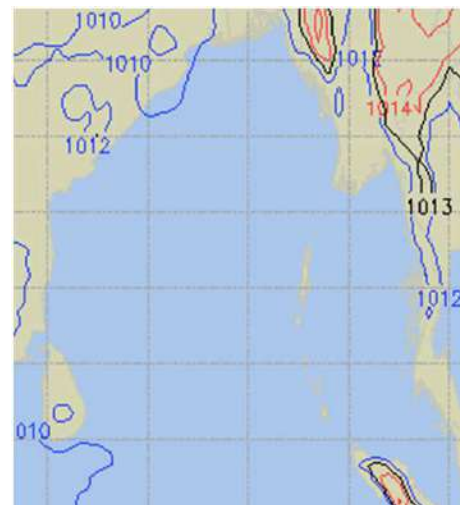
15 Feb 2025



16 Feb 2025



17 Feb 2025



18 Feb 2025

