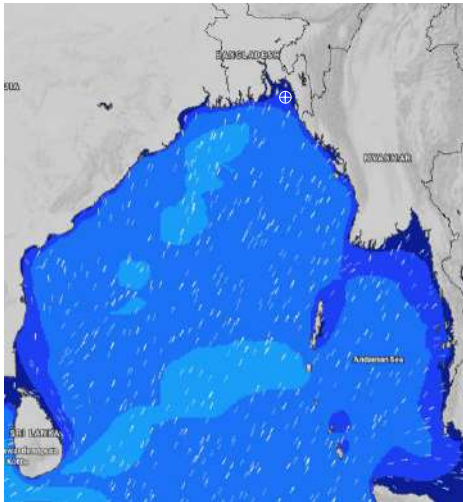


# MARINE WEATHER FORECAST- NEAR AUTHORITY BUOY (Lat 22° 12' N, Long 091° 38' E)

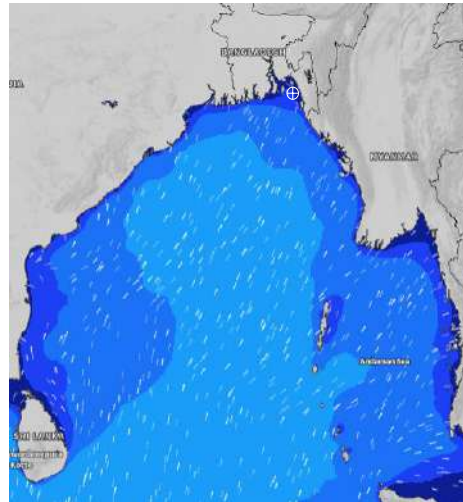
**DATE : 11 to 18 July 2024**

Date	Time	Max Wind Spd (kts)	Wind Direction	Wave Ht (m)	Sea State	Baro Pressure	Air Temp		Sea Surface Temp	Humidity (%)	Prb of Rain (%)	Sea State	Wave Ht (m)
							Max	Min					
11-07-24	0001	16	SSE	0.3	2	1006	28	25	28	93%	60% (0.6 mm)	0	0
	0600	17	SSE	0.3	2	1006			27	97%	30% (0.3 mm)	1	0 - 0.1
	1200	20	SSE	0.4	2	1006			27	93%	90% (3.2 mm)	2	0.1 - 0.5
	1800	18	SSE	0.4	2	1004			26	90%	56% (0.4 mm)	3	0.5 - 1.25
12-07-24	0001	17	SSE	0.3	2	1004	29	26	27	94%	59% (0.6 mm)	4	1.25 - 2.5
	0600	18	SSE	0.3	2	1003			27	95%	74% (1.5 mm)	5	2.5 - 4.0
	1200	18	S	0.4	2	1003			28	87%	72% (0.6 mm)	6	4.0 - 6.0
	1800	16	SSE	0.3	2	1001			28	89%	31% (0.2 mm)	7	6.0 - 9.0
13-07-24	0001	19	SSE	0.3	2	1002	31	27	27	93%	35% (0.2 mm)	8	9.0 - 14.0
	0600	19	SSE	0.3	2	1001			27	93%	37% (0.2 mm)	9	Over 14.0
	1200	13	SSW	0.3	2	1001			28	79%	55% (0.4 mm)		
	1800	15	SSW	0.3	2	998			28	86%	22% (0.0 mm)		
14-07-24	0001	16	SSE	0.3	2	1000	32	27	27	90%	32% (0.2 mm)		
	0600	15	SE	0.2	2	1000			27	91%	14% (0.0 mm)		
	1200	10	SW	0.1	1	999			28	74%	39% (0.2 mm)		
	1800	14	SSW	0.2	2	998			29	84%	51% (0.4 mm)		

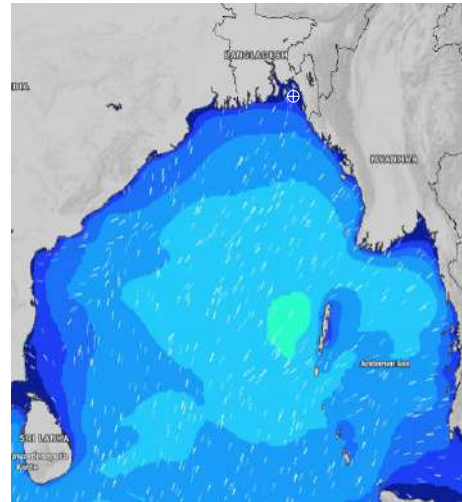
**11 July 24 Thu (Probability 98%)**



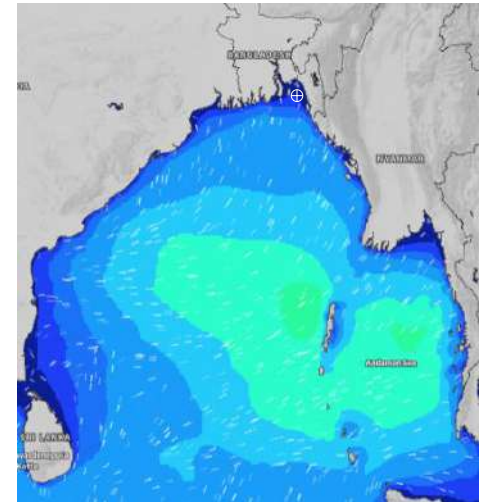
**12 July 24 Fri (Probability 95%)**



**13 July 24 Sat Probability 90%**



**14 July 24 Sun (Probability 80%)**



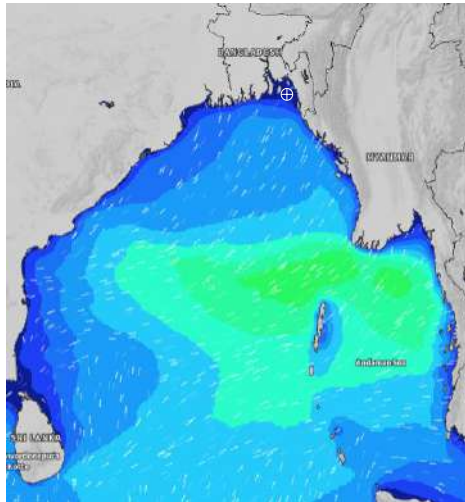
Significant wave height (m)

# MARINE WEATHER FORECAST- NEAR AUTHORITY BUOY (Lat 22° 12' N, Long 091° 38' E)

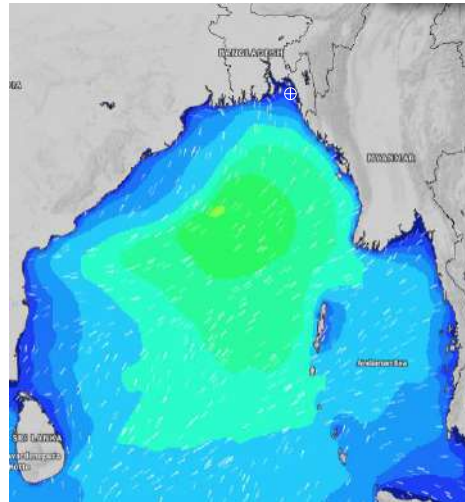
**DATE : 11 to 18 July 2024**

Date	Time	Max Wind Spd (kts)	Wind Direction	Wave Ht (m)	Sea State	Baro Pressure	Air Temp		Sea Surface Temp	Humidity (%)	Prob of Rain (%)	Sea State	Wave Ht (m)
							Max	Min					
15-07-24	0001	14	SSE	0.2	2	1000	32	27	28	89%	36% (0.2 mm)	0	0
	0600	6	E	0.1	1	1000			27	90%	20% (0.0 mm)	1	0 - 0.1
	1200	9	WSW	0.1	1	999			29	74%	34% (0.2 mm)	2	0.1 - 0.5
	1800	8	SW	0.1	1	998			29	84%	46% (0.3 mm)	3	0.5 - 1.25
16-07-24	0001	4	NNE	0.1	1	999	32	27	28	88%	24% (0.0 mm)	4	1.25 - 2.5
	0600	6	E	0.1	1	1000			27	91%	18% (0.0 mm)	5	2.5 - 4.0
	1200	22	E	0.4	2	1000			30	74%	44% (0.3 mm)	6	4.0 - 6.0
	1800	25	SSE	0.4	2	1000			29	84%	40% (0.3 mm)	7	6.0 - 9.0
17-07-24	0001	28	SSE	0.5	2	1002	32	27	28	90%	24% (0.1 mm)	8	9.0 - 14.0
	0600	27	SE	0.5	2	1001			28	93%	24% (0.1 mm)	9	Over 14.0
	1200	23	SSE	0.5	2	1002			29	77%	47% (0.3 mm)		
	1800	21	S	0.4	2	1000			29	85%	50% (0.4 mm)		
18-07-24	0001	25	SE	0.4	2	1000	32	27	27	91%	51% (0.6 mm)		
	0600	22	SE	0.3	2	999			27	93%	45% (0.4 mm)		
	1200	13	SSW	0.2	2	998			30	77%	34% (0.2 mm)		
	1800	20	S	0.4	2	995			29	86%	33% (0.2 mm)		

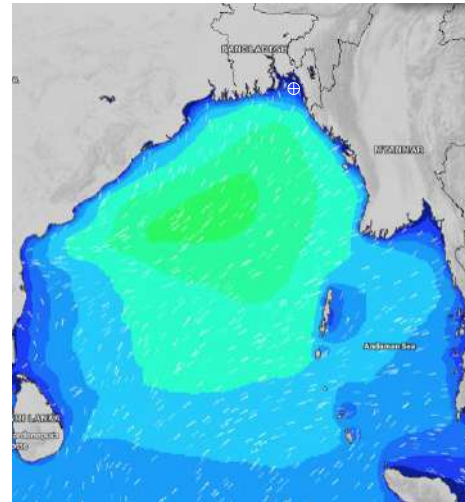
**15 July 24 Mon (Probability 70%)**



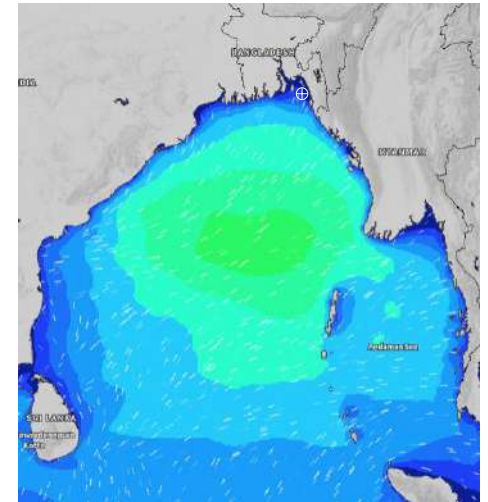
**16 July 24 Tue (Probability 60%)**



**17 July 24 Wed (Probability 50%)**



**18 July 24 Thu (Probability 50%)**



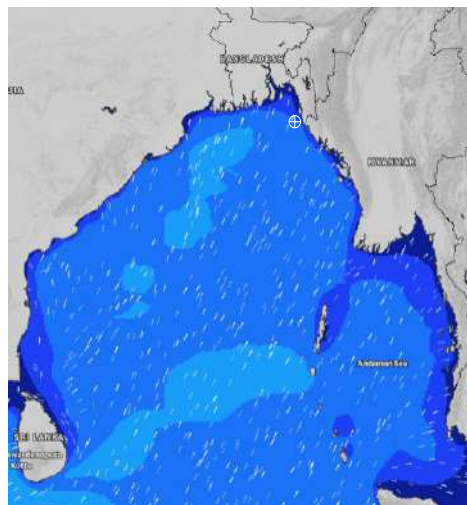
Significant wave height (m)

# MARINE WEATHER FORECAST- 20 NM WEST OF ELEPHANT POINT (Lat 21° 10' N, Long 091° 42' E)

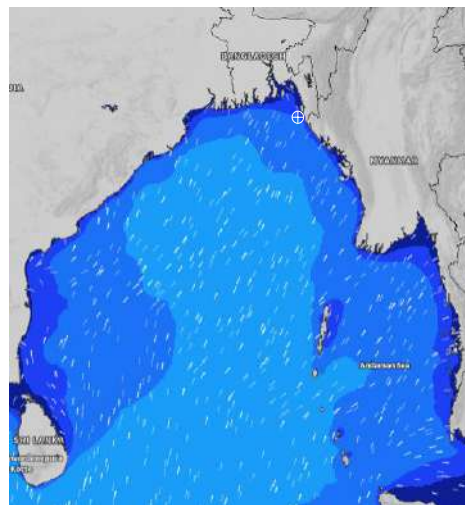
**DATE : 11 to 18 July 2024**

Date	Time	Max Wind Spd (kts)	Wind Direction	Wave Ht (m)	Sea State	Baro Pressure	Air Temp		Sea Surface Temp	Humidity (%)	Prob of Rain (%)	Sea State	Wave Ht (m)
							Max	Min					
11-07-24	0001	12	S	1.2	3	1007	28	26	28	92%	45% (0.5 mm)	0	0
	0600	14	S	1.2	3	1006			28	95%	38% (0.4 mm)	1	0 - 0.1
	1200	15	S	1.3	4	1006			27	93%	90% (5.3 mm)	2	0.1 - 0.5
	1800	9	S	1.3	4	1004			27	94%	73% (0.6 mm)	3	0.5 - 1.25
12-07-24	0001	11	S	1.3	4	1004	28	26	27	94%	82% (0.9 mm)	4	1.25 - 2.5
	0600	13	SSE	1.3	4	1003			28	95%	78% (0.7 mm)	5	2.5 - 4.0
	1200	16	SSE	1.3	4	1003			28	91%	77% (1.0 mm)	6	4.0 - 6.0
	1800	14	SE	1.3	4	1001			28	90%	52% (0.4 mm)	7	6.0 - 9.0
13-07-24	0001	17	SSE	1.3	4	1002	30	26	28	94%	56% (0.6 mm)	8	9.0 - 14.0
	0600	16	SE	1.4	4	1001			28	94%	49% (0.4 mm)	9	Over 14.0
	1200	16	SSE	1.5	4	1001			28	82%	53% (0.4 mm)		
	1800	13	S	1.4	4	999			29	87%	32% (0.2 mm)		
14-07-24	0001	14	SSE	1.5	4	1000	31	27	29	90%	41% (0.3 mm)		
	0600	17	SE	1.6	4	1000			28	92%	22% (0.0 mm)		
	1200	17	SSE	1.7	4	999			29	78%	50% (0.4 mm)		
	1800	16	SSE	1.6	4	998			29	84%	24% (0.1 mm)		

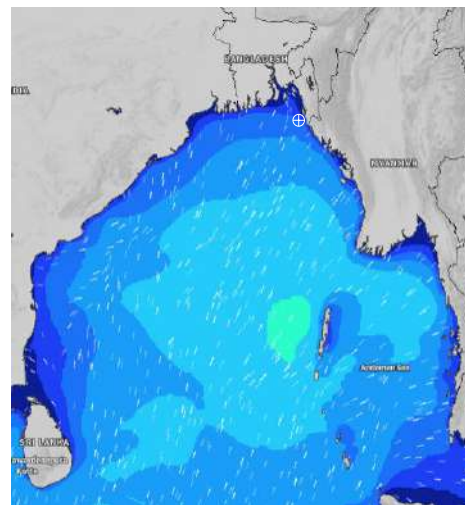
**11 July 24 Thu (Probability 98%)**



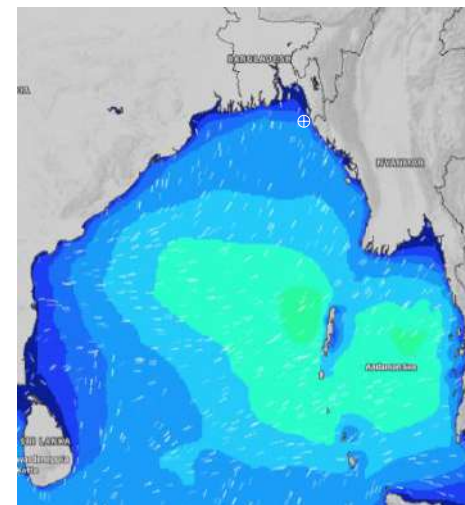
**12 July 24 Fri (Probability 95%)**



**13 July 24 Sat Probability 90%**



**14 July 24 Sun (Probability 80%)**



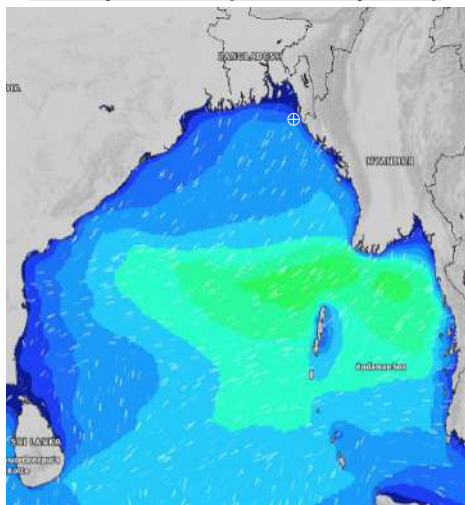
Significant wave height (m)

# MARINE WEATHER FORECAST- 20 NM WEST OF ELEPHANT POINT (Lat 21° 10' N, Long 091° 42' E)

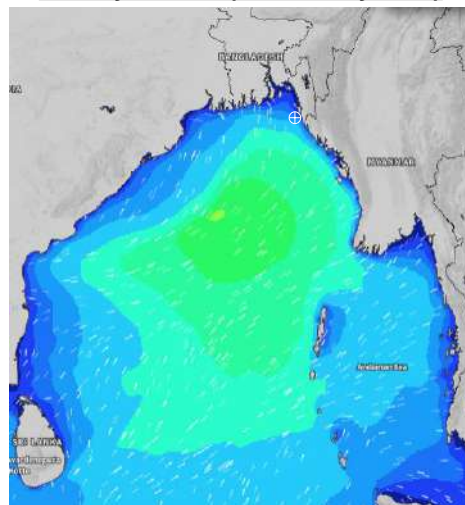
**DATE : 11 to 18 July 2024**

Date	Time	Max Wind Spd (kts)	Wind Direction	Wave Ht (m)	Sea State	Baro Pressure	Air Temp		Sea Surface Temp	Humidity (%)	Prob of Rain (%)	Sea State	Wave Ht (m)
							Max	Min					
15-07-24	0001	15	SE	1.5	4	1000	31	27	29	88%	39% (0.2 mm)	0	0
	0600	12	SE	1.6	4	1000			28	90%	23% (0.0 mm)	1	0 - 0.1
	1200	11	SSE	1.5	4	999			29	77%	36% (0.2 mm)	2	0.1 - 0.5
	1800	7	S	1.5	4	998			29	85%	47% (0.3 mm)	3	0.5 - 1.25
16-07-24	0001	6	ENE	1.4	4	999	31	27	29	88%	28% (0.1 mm)	4	1.25 - 2.5
	0600	27	SE	1.8	4	1000			28	90%	18% (0.0 mm)	5	2.5 - 4.0
	1200	26	SE	2.2	4	1001			28	78%	44% (0.3 mm)	6	4.0 - 6.0
	1800	25	SSE	2.6	5	1000			28	86%	40% (0.3 mm)	7	6.0 - 9.0
17-07-24	0001	30	SSE	2.8	5	1002	31	27	28	89%	24% (0.1 mm)	8	9.0 - 14.0
	0600	27	SSE	2.9	5	1001			28	90%	24% (0.1 mm)	9	Over 14.0
	1200	24	SSE	2.7	5	1001			28	79%	47% (0.3 mm)		
	1800	22	SSE	2.5	4	1000			28	85%	50% (0.4 mm)		
18-07-24	0001	22	SSE	2.4	4	1000	31	27	28	90%	51% (0.6 mm)		
	0600	18	SE	2.3	4	999			28	91%	45% (0.4 mm)		
	1200	20	SE	2.2	4	998			28	81%	34% (0.2 mm)		
	1800	19	SSE	2.1	4	996			28	86%	33% (0.2 mm)		

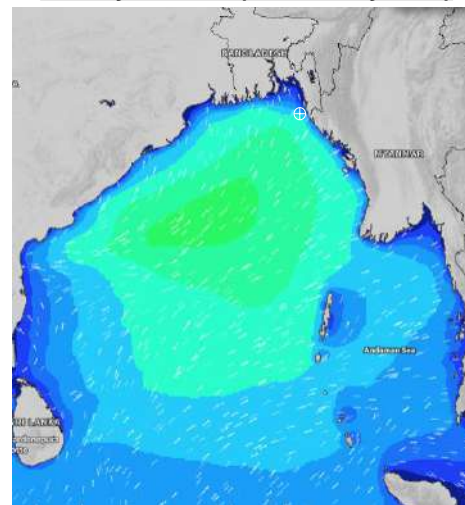
**15 July 24 Mon (Probability 70%)**



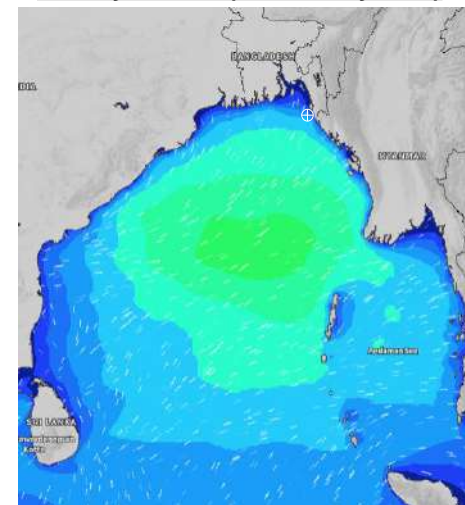
**16 July 24 Tue (Probability 60%)**



**17 July 24 Wed (Probability 50%)**



**18 July 24 Thu (Probability 50%)**



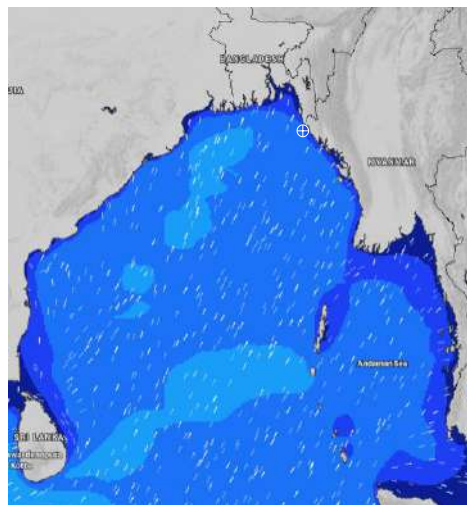
Significant wave height (m)

# MARINE WEATHER FORECAST- 15 NM WEST OF ST. MARTIN'S LIGHT HOUSE (Lat 20° 37'N, Long 092° 03'E)

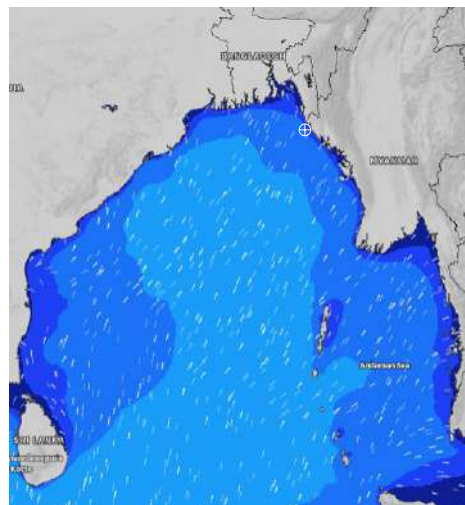
**DATE : 11 to 18 July 2024**

Date	Time	Max Wind Spd (kts)	Wind Direction	Wave Ht (m)	Sea State	Baro Pressure	Air Temp		Sea Surface Temp	Humidity (%)	Prob of Rain(%)	Sea State	Wave Ht (m)
							Max	Min					
11-07-24	0001	11	SSW	1.4	4	1008	28	26	28	92%	80% (3.7 mm)	0	0
	0600	13	SSW	1.5	4	1006			28	94%	90% (6.8 mm)	1	0 - 0.1
	1200	11	SSE	1.5	4	1007			27	94%	92% (4.2 mm)	2	0.1 - 0.5
	1800	6	SSW	1.5	4	1004			27	94%	87% (1.4 mm)	3	0.5 - 1.25
12-07-24	0001	10	SSW	1.6	4	1005	28	26	27	93%	84% (1.0 mm)	4	1.25 - 2.5
	0600	11	SSE	1.6	4	1003			28	92%	94% (1.2 mm)	5	2.5 - 4.0
	1200	11	S	1.5	4	1004			28	91%	86% (1.1 mm)	6	4.0 - 6.0
	1800	6	SSE	1.5	4	1001			28	90%	67% (0.6 mm)	7	6.0 - 9.0
13-07-24	0001	10	SSE	1.5	4	1003	29	26	29	93%	78% (1.0 mm)	8	9.0 - 14.0
	0600	9	SSE	1.7	4	1001			28	93%	89% (1.2 mm)	9	Over 14.0
	1200	8	SSE	1.8	4	1002			28	88%	80% (1.1 mm)		
	1800	9	S	1.8	4	999			29	89%	69% (0.4 mm)		
14-07-24	0001	12	SSE	2.0	4	1000	30	27	29	92%	63% (0.6 mm)		
	0600	14	SE	2.0	4	999			28	94%	45% (0.4 mm)		
	1200	16	SE	2.1	4	1000			29	84%	65% (0.5 mm)		
	1800	13	SSE	2.0	4	998			29	86%	35% (0.2 mm)		

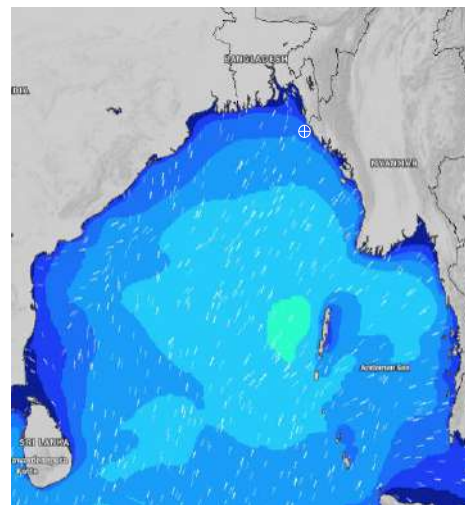
**11 July 24 Thu (Probability 98%)**



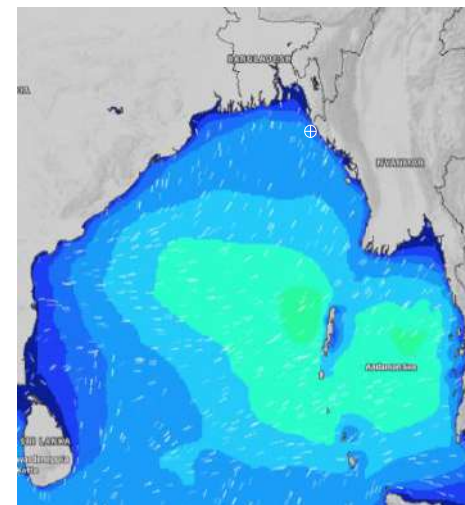
**12 July 24 Fri (Probability 95%)**



**13 July 24 Sat Probability 90%**



**14 July 24 Sun (Probability 80%)**



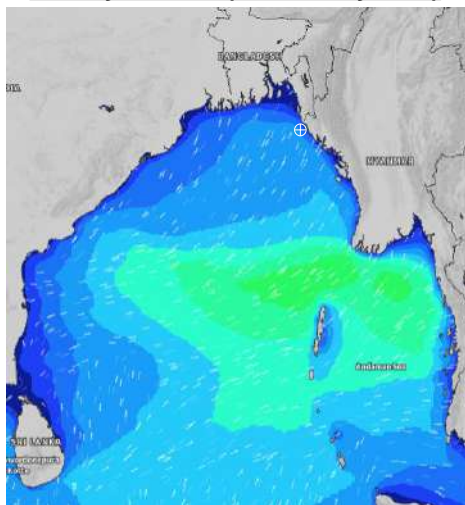
Significant wave height (m)

# MARINE WEATHER FORECAST- 15 NM WEST OF ST. MARTIN'S LIGHT HOUSE (Lat 20° 37'N, Long 092° 03'E)

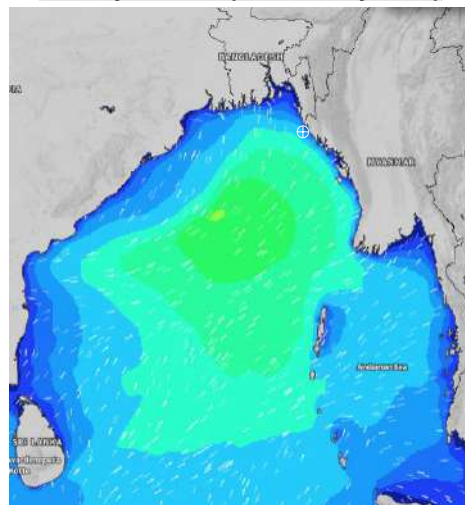
**DATE : 11 to 18 July 2024**

Date	Time	Max Wind Spd (kts)	Wind Direction	Wave Ht (m)	Sea State	Baro Pressure	Air Temp		Sea Surface Temp	Humidity (%)	Prob of Rain (%)	Sea State	Wave Ht (m)
							Max	Min					
15-07-24	0001	14	SSE	2.0	4	1000	30	27	29	90%	64% (0.6 mm)	0	0
	0600	13	ESE	2.1	4	999			29	91%	75% (0.7 mm)	1	0 - 0.1
	1200	16	SE	2.1	4	1000			29	84%	43% (0.1 mm)	2	0.1 - 0.5
	1800	10	S	2.0	4	997			29	87%	34% (0.2 mm)	3	0.5 - 1.25
16-07-24	0001	16	NW	1.8	4	999	30	27	29	90%	64% (0.6 mm)	4	1.25 - 2.5
	0600	26	SE	2.3	4	998			28	92%	75% (0.7 mm)	5	2.5 - 4.0
	1200	21	SSE	2.7	5	1002			28	85%	43% (0.1 mm)	6	4.0 - 6.0
	1800	23	S	3.2	5	1000			28	88%	34% (0.2 mm)	7	6.0 - 9.0
17-07-24	0001	26	SSE	3.3	5	1002	30	27	28	90%	64% (0.6 mm)	8	9.0 - 14.0
	0600	28	S	3.6	5	1001			28	91%	75% (0.7 mm)	9	Over 14.0
	1200	23	S	3.4	5	1003			28	84%	43% (0.1 mm)		
	1800	20	S	3.1	5	1002			28	87%	34% (0.2 mm)		
18-07-24	0001	19	S	3.1	5	1001	30	27	28	90%	64% (0.6 mm)		
	0600	17	S	3.0	5	999			28	92%	75% (0.7 mm)		
	1200	11	S	2.9	5	1000			28	85%	43% (0.1 mm)		
	1800	13	SSE	2.8	5	996			28	88%	34% (0.2 mm)		

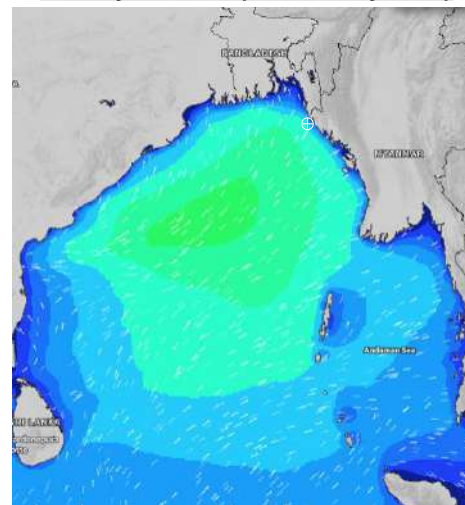
**15 July 24 Mon (Probability 70%)**



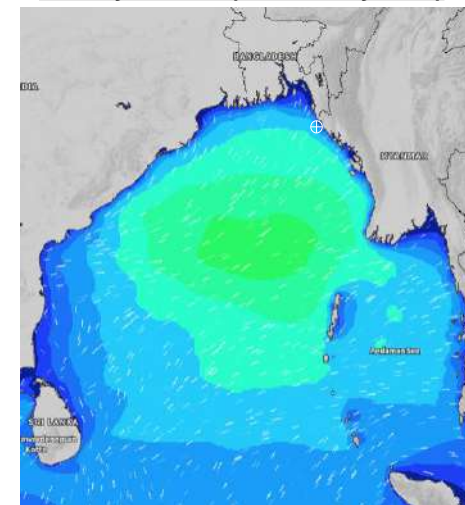
**16 July 24 Tue (Probability 60%)**



**17 July 24 Wed (Probability 50%)**



**18 July 24 Thu (Probability 50%)**



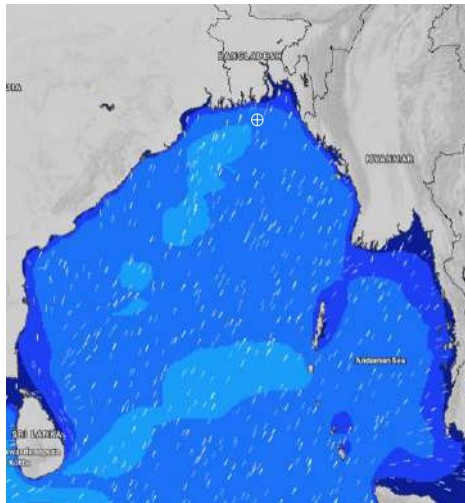
Significant wave height (m)

# MARINE WEATHER FORECAST- 40 NM ESE OF PAYRA FAIRWAY (Lat 21° 07' N, Long 090° 45' E)

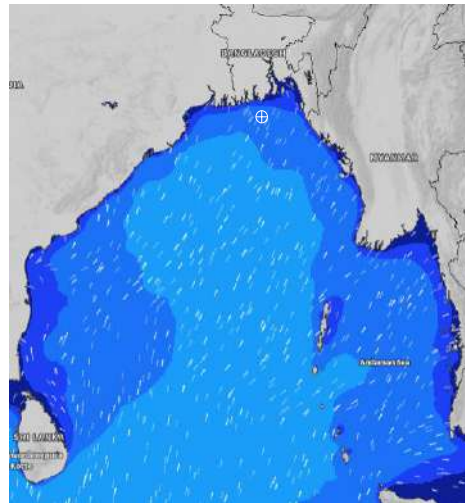
**DATE : 11 to 18 July 2024**

Date	Time	Max Wind Spd (kts)	Wind Direction	Wave Ht (m)	Sea State	Baro Pressure	Air Temp		Sea Surface Temp	Humidity (%)	Prob of Rain (%)	Sea State	Wave Ht (m)
							Max	Min					
11-07-24	0001	17	SSW	1.6	4	1006	29	27	29	88%	38% (0.2 mm)	0	0
	0600	18	SW	1.7	4	1005			28	87%	19% (0.0 mm)	1	0 - 0.1
	1200	16	SSW	1.7	4	1005			28	87%	24% (0.0 mm)	2	0.1 - 0.5
	1800	17	SW	1.7	4	1003			28	89%	44% (0.4 mm)	3	0.5 - 1.25
12-07-24	0001	16	SSW	1.8	4	1003	29	27	29	90%	66% (0.6 mm)	4	1.25 - 2.5
	0600	15	SSW	1.7	4	1002			28	91%	67% (0.4 mm)	5	2.5 - 4.0
	1200	16	SSW	1.6	4	1003			29	87%	64% (0.2 mm)	6	4.0 - 6.0
	1800	12	S	1.6	4	1000			29	88%	19% (0.0 mm)	7	6.0 - 9.0
13-07-24	0001	12	SSW	1.6	4	1001	30	27	29	91%	60% (0.6 mm)	8	9.0 - 14.0
	0600	9	SSW	1.7	4	1001			28	92%	49% (0.4 mm)	9	Over 14.0
	1200	9	S	1.7	4	1000			29	84%	39% (0.2 mm)		
	1800	11	S	1.8	4	998			29	85%	10% (0.0 mm)		
14-07-24	0001	13	S	1.9	4	999	31	28	29	90%	30% (0.2 mm)		
	0600	12	SE	1.9	4	999			28	91%	42% (0.4 mm)		
	1200	14	SE	1.9	4	999			29	82%	35% (0.2 mm)		
	1800	13	SSE	2.0	4	998			29	84%	10% (0.0 mm)		

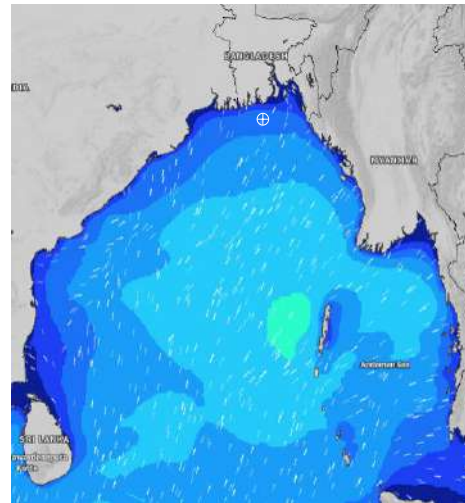
**11 July 24 Thu (Probability 98%)**



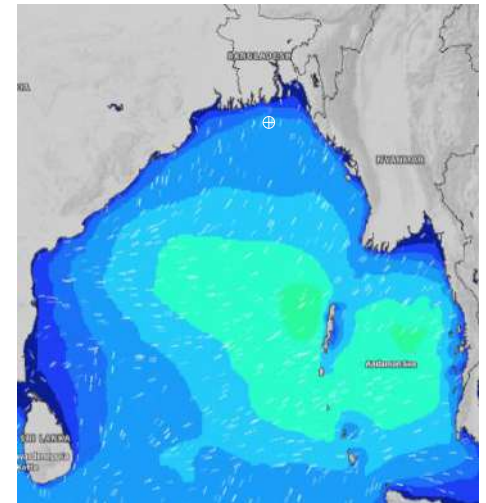
**12 July 24 Fri (Probability 95%)**



**13 July 24 Sat Probability 90%**



**14 July 24 Sun (Probability 80%)**



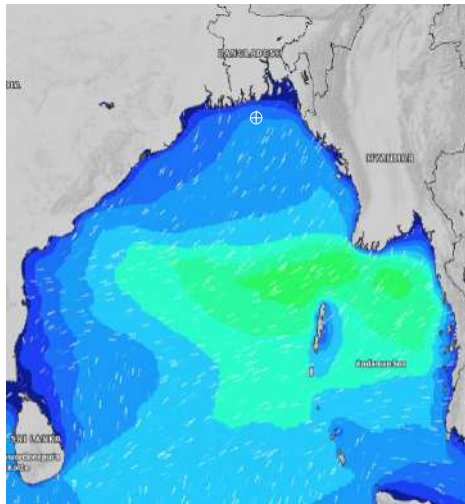
Significant wave height (m)

# MARINE WEATHER FORECAST- 40 NM ESE OF PAYRA FAIRWAY (Lat 21° 07' N, Long 090° 45' E)

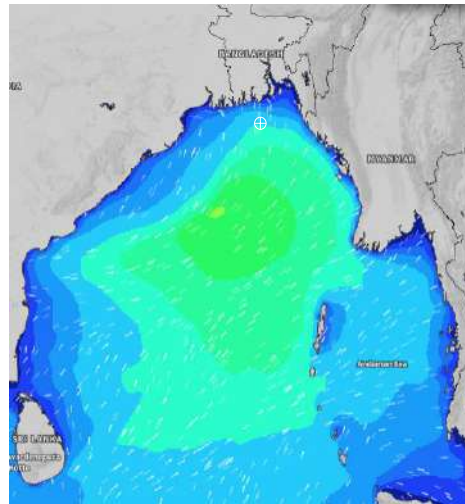
**DATE : 11 to 18 July 2024**

Date	Time	Max Wind Spd (kts)	Wind Direction	Wave Ht (m)	Sea State	Baro Pressure	Air Temp		Sea Surface Temp	Humidity (%)	Prob of Rain (%)	Sea State	Wave Ht (m)
							Max	Min					
15-07-24	0001	14	SSE	2.0	4	1000	31	28	29	88%	50% (0.6 mm)	0	0
	0600	13	SE	2.1	4	999			29	90%	42% (0.4 mm)	1	0 - 0.1
	1200	15	ESE	2.0	4	999			29	82%	32% (0.2 mm)	2	0.1 - 0.5
	1800	12	SSE	1.9	4	997			29	84%	24% (0.1 mm)	3	0.5 - 1.25
16-07-24	0001	7	ESE	1.8	4	999	31	28	29	89%	61% (0.6 mm)	4	1.25 - 2.5
	0600	26	SE	2.0	4	998			29	90%	44% (0.4 mm)	5	2.5 - 4.0
	1200	24	SE	2.8	5	1000			29	82%	43% (0.4 mm)	6	4.0 - 6.0
	1800	27	SSE	3.4	5	998			29	84%	24% (0.1 mm)	7	6.0 - 9.0
17-07-24	0001	31	SSE	3.9	5	1000	31	28	28	90%	61% (0.6 mm)	8	9.0 - 14.0
	0600	24	S	3.8	5	999			28	91%	44% (0.4 mm)	9	Over 14.0
	1200	24	S	3.6	5	1000			28	85%	43% (0.4 mm)		
	1800	21	S	3.4	5	998			28	86%	24% (0.1 mm)		
18-07-24	0001	18	S	3.2	5	999	31	28	28	88%	61% (0.6 mm)		
	0600	13	S	3.0	5	998			28	90%	44% (0.4 mm)		
	1200	11	SSE	2.9	5	997			29	82%	43% (0.4 mm)		
	1800	13	SSE	2.8	5	998			29	86%	24% (0.1 mm)		

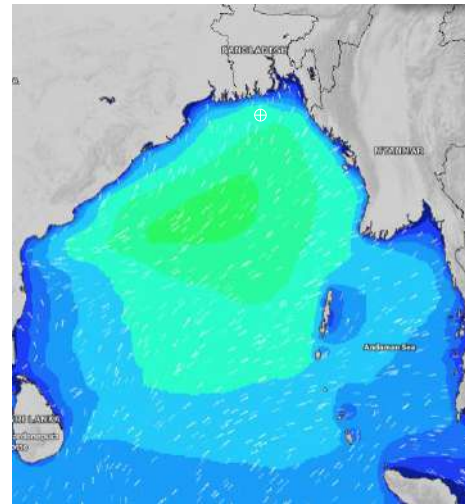
**15 July 24 Mon (Probability 70%)**



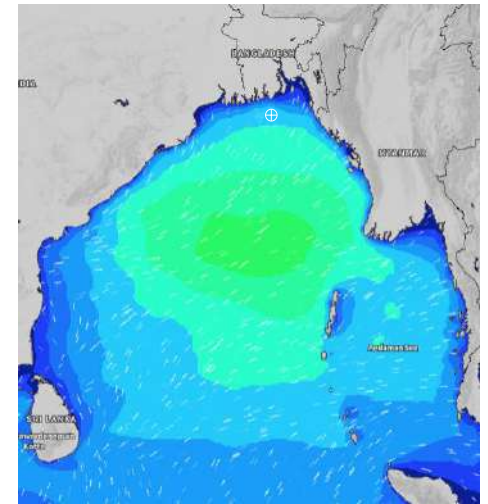
**16 July 24 Tue (Probability 60%)**



**17 July 24 Wed (Probability 50%)**



**18 July 24 Thu (Probability 50%)**



Significant wave height (m)

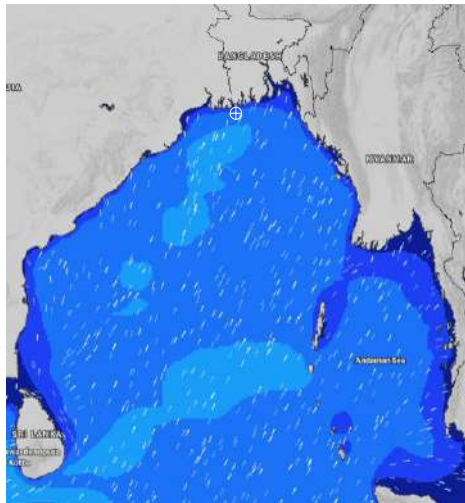


# MARINE WEATHER FORECAST- 10 NM SOUTH OF MONGLA FAIRWAY (Lat 21° 16' N, Long 089° 34' E)

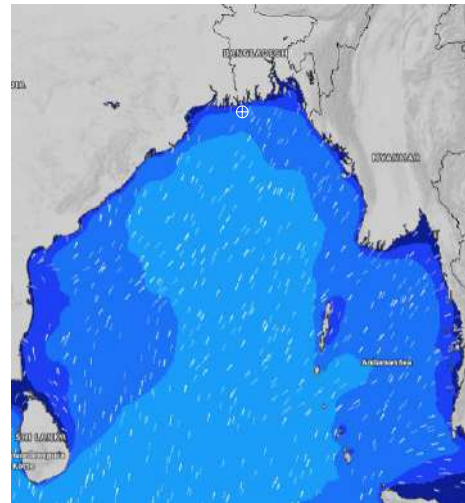
**DATE : 11 to 18 July 2024**

Date	Time	Max Wind Spd (kts)	Wind Direction	Wave Ht (m)	Sea State	Baro Pressure	Air Temp		Sea Surface Temp	Humidity (%)	Prob of Rain (%)	Sea State	Wave Ht (m)
							Max	Min					
11-07-24	0001	19	SSW	1.7	4	1005	31	27	29	89%	21% (0.0 mm)	0	0
	0600	20	SW	1.8	4	1004			29	87%	17% (0.0 mm)	1	0 - 0.1
	1200	19	SW	1.8	4	1004			29	83%	53% (0.4 mm)	2	0.1 - 0.5
	1800	22	SSW	1.9	4	1002			29	89%	48% (0.6 mm)	3	0.5 - 1.25
12-07-24	0001	20	SSW	1.9	4	1002	30	27	29	92%	57% (0.4 mm)	4	1.25 - 2.5
	0600	18	SSW	1.8	4	1001			29	96%	75% (0.6 mm)	5	2.5 - 4.0
	1200	15	SSW	1.7	4	1002			29	91%	88% (1.1 mm)	6	4.0 - 6.0
	1800	11	SW	1.6	4	1000			29	87%	21% (0.0 mm)	7	6.0 - 9.0
13-07-24	0001	12	SSW	1.7	4	1000	32	27	29	94%	40% (0.4 mm)	8	9.0 - 14.0
	0600	10	SSW	1.6	4	1000			29	94%	46% (0.6 mm)	9	Over 14.0
	1200	7	SSW	1.6	4	1000			29	79%	63% (0.6 mm)		
	1800	7	SSW	1.6	4	998			29	83%	14% (0.0 mm)		
14-07-24	0001	11	S	1.7	4	999	32	27	29	91%	24% (0.1 mm)		
	0600	8	SSE	1.8	4	998			29	94%	38% (0.1 mm)		
	1200	10	SSE	1.8	4	998			29	79%	44% (0.3 mm)		
	1800	9	SE	1.8	4	997			29	80%	10% (0.0 mm)		

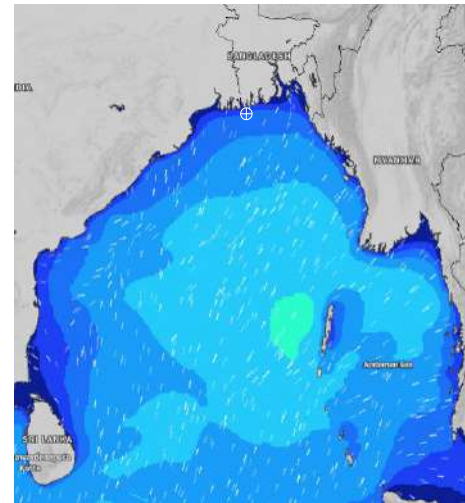
**11 July 24 Thu (Probability 98%)**



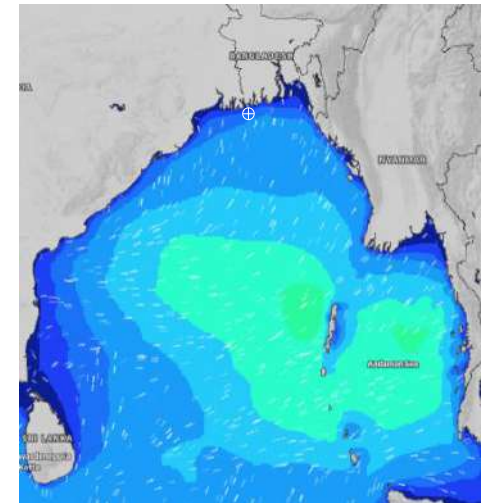
**12 July 24 Fri (Probability 95%)**



**13 July 24 Sat Probability 90%**



**14 July 24 Sun (Probability 80%)**



Significant wave height (m)

# MARINE WEATHER FORECAST- 10 NM SOUTH OF MONGLA FAIRWAY (Lat 21° 16' N, Long 089° 34' E)

**DATE : 11 to 18 July 2024**

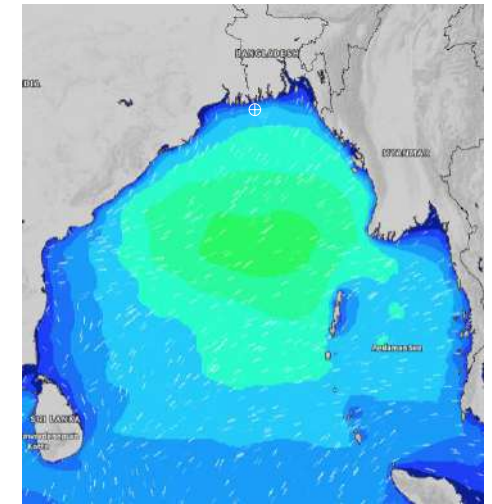
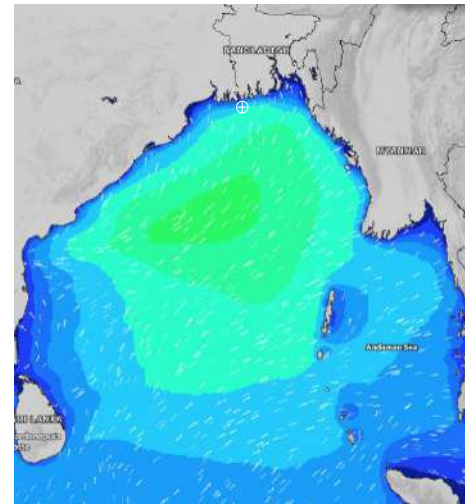
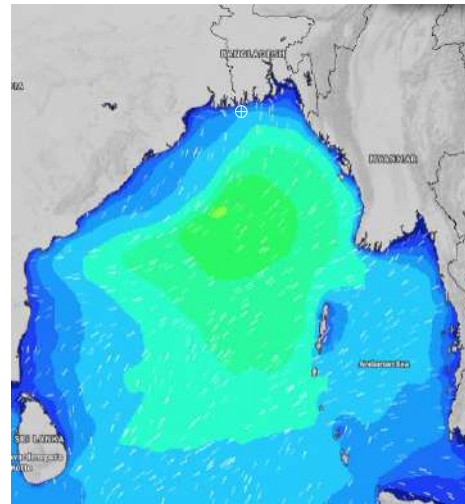
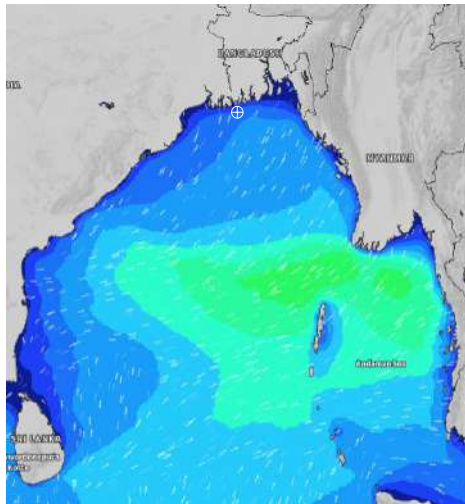
Date	Time	Max Wind Spd (kts)	Wind Direction	Wave Ht (m)	Sea State	Baro Pressure	Air Temp		Sea Surface Temp	Humidity (%)	Prob of Rain (%)	Sea State	Wave Ht (m)
							Max	Min					
15-07-24	0001	10	SE	1.9	4	999	32	28	29	89%	24% (0.0 mm)	0	0
	0600	11	ESE	1.9	4	999			29	92%	35% (0.2 mm)	1	0 - 0.1
	1200	13	ESE	1.8	4	999			29	76%	63% (0.5 mm)	2	0.1 - 0.5
	1800	13	SE	1.7	4	998			29	80%	60% (0.6 mm)	3	0.5 - 1.25
16-07-24	0001	8	ESE	1.6	4	999	32	28	29	89%	45% (0.7 mm)	4	1.25 - 2.5
	0600	20	E	1.6	4	998			29	91%	32% (0.4 mm)	5	2.5 - 4.0
	1200	28	SE	2.6	5	998			29	76%	24% (0.0 mm)	6	4.0 - 6.0
	1800	23	SE	3.1	5	997			29	79%	24% (0.0 mm)	7	6.0 - 9.0
17-07-24	0001	25	SE	3.5	5	998	32	27	29	89%	45% (0.7 mm)	8	9.0 - 14.0
	0600	19	S	3.4	5	997			29	91%	32% (0.4 mm)	9	Over 14.0
	1200	17	S	3.3	5	999			29	76%	24% (0.0 mm)		
	1800	15	S	3.2	5	997			29	79%	24% (0.0 mm)		
18-07-24	0001	16	S	3.0	5	998	33	28	29	89%	45% (0.7 mm)		
	0600	10	S	2.9	5	997			28	91%	32% (0.4 mm)		
	1200	11	SE	2.8	5	997			29	76%	24% (0.0 mm)		
	1800	12	SSE	2.7	5	994			29	79%	24% (0.0 mm)		

**15 July 24 Mon (Probability 70%)**

**16 July 24 Tue (Probability 60%)**

**17 July 24 Wed (Probability 50%)**

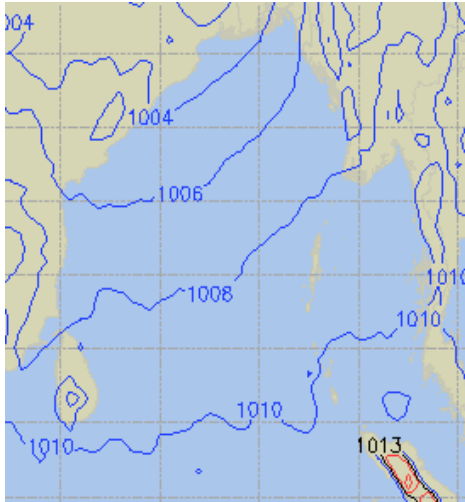
**18 July 24 Thu (Probability 50%)**



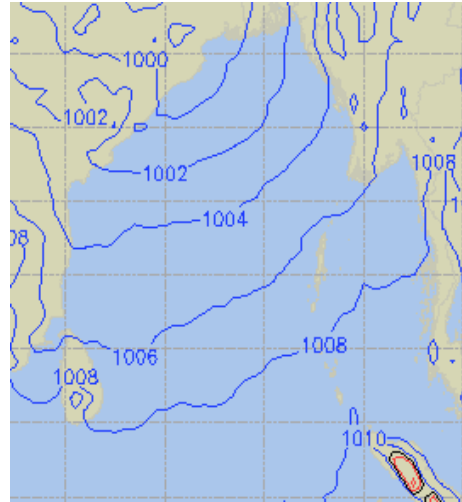
Significant wave height (m)

## PREDICTED SURFACE PRESSURE FORECAST (11 to 17 July 2024)

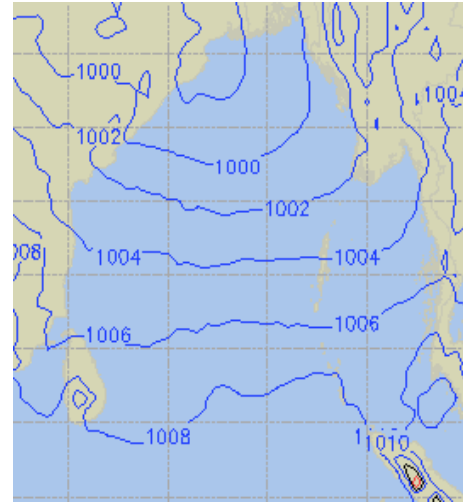
**11 July 24 Thu (Probability 98%)**



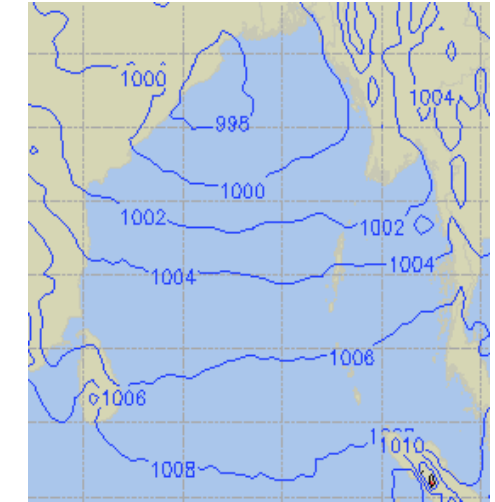
**12 July 24 Fri (Probability 95%)**



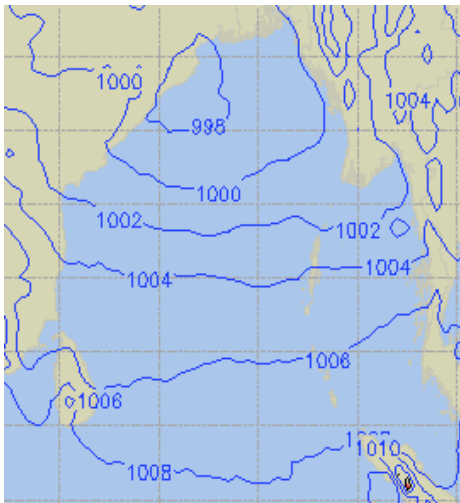
**13 July 24 Sat (Probability 90%)**



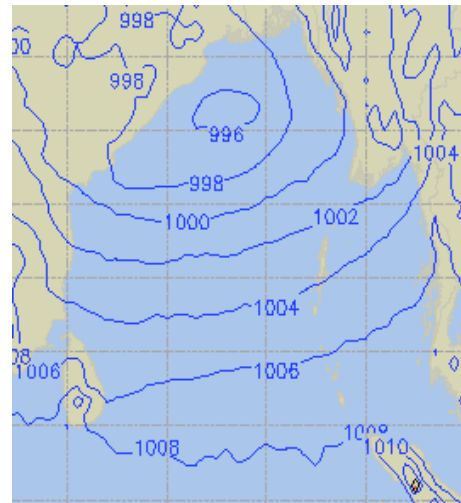
**14 July 24 Sun (Probability 80%)**



**15 July 24 Mon (Probability 70%)**



**16 July 24 Tue (Probability 60%)**



**17 July 24 Wed (Probability 50%)**

