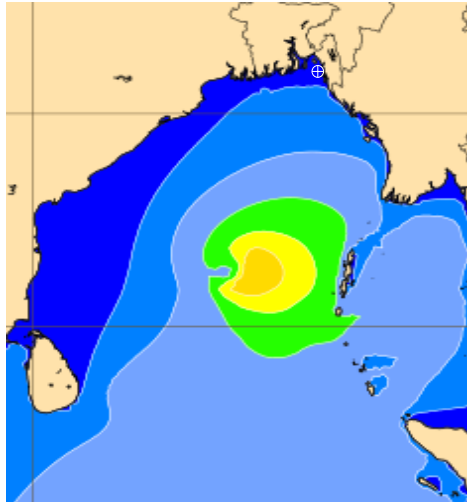


**MARINE WEATHER FORECAST- NEAR AUTHORITY BUOY (Lat 22° 12' N, Long 091° 38' E)**

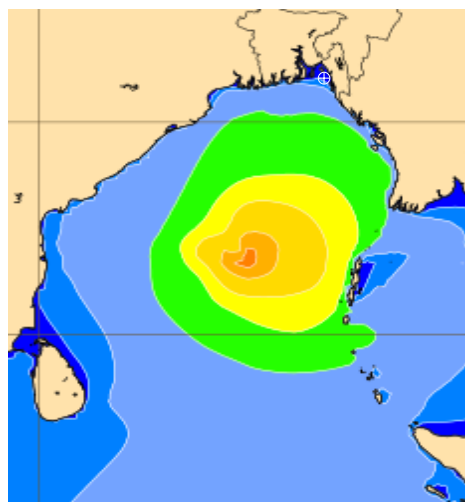
**DATE : 11 to 18 May 2023**

Date	Time	Max Wind Spd (kts)	Wind Direction	Wave Ht (m)	Sea State	Baro Pressure	Air Temp		Sea Surface Temp	Prob of Rain (%)	Sea State	Wave Ht (m)
							Max	Min				
11-05-23	0001	13	SSE	0.4	2	1008	35	27	28	2% (0.0 mm)	0	0
	0600	7	SE	0.2	2	1008			27	11% (0.0 mm)	1	0 - 0.1
	1200	7	WSW	0.1	1	1010			28	3% (0.0 mm)	2	0.1 - 0.5
	1800	14	WSW	0.4	2	1004			29	4% (0.0 mm)	3	0.5 - 1.25
12-05-23	0001	17	SSE	0.4	2	1006	34	26	28	6% (0.0 mm)	4	1.25 - 2.5
	0600	7	SE	0.1	1	1007			27	6% (0.0 mm)	5	2.5 - 4.0
	1200	6	WSW	0.1	1	1006			28	10% (0.0 mm)	6	4.0 - 6.0
	1800	18	SSW	0.6	3	1004			29	13% (0.0 mm)	7	6.0 - 9.0
13-05-23	0001	8	SSE	0.2	2	1006	31	26	27	24% (0.0 mm)	8	9.0 - 14.0
	0600	5	ENE	0.1	1	1004			26	24% (0.0 mm)	9	Over 14.0
	1200	13	SW	0.2	2	1004			28	44% (0.4 mm)		
	1800	19	ESE	0.4	2	1002			26	45% (0.5 mm)		
14-05-23	0001	23	ENE	0.3	2	1002	29	25	24	43% (0.4 mm)		
	0600	9	NE	0.2	2	998			25	37% (0.3mm)		
	1200	25	N	0.5	2	995			27	68% (0.9 mm)		
	1800	20	NNW	0.4	2	998			25	70% (1.8 mm)		

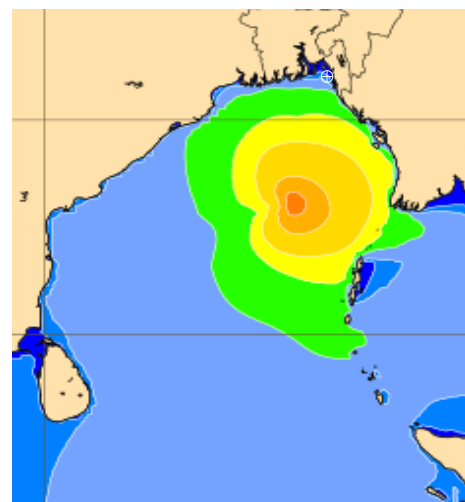
**11 May 23 Thu (Probability 98%)**



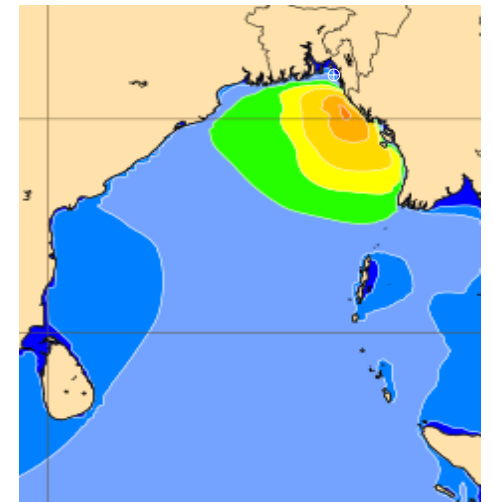
**12 May 23 Fri (Probability 95%)**



**13 May 23 Sat (Probability 90%)**



**14 May 23 Sun (Probability 80%)**



0 0.5 1 2 3 4 6 8 10 12 14 20

Significant wave height (m)

**MARINE WEATHER FORECAST- NEAR AUTHORITY BUOY (Lat 22° 12'N, Long 091° 38' E)**

**DATE : 11 to 18 May 2023**

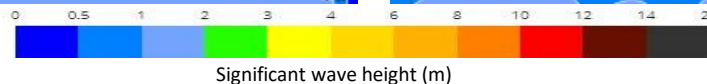
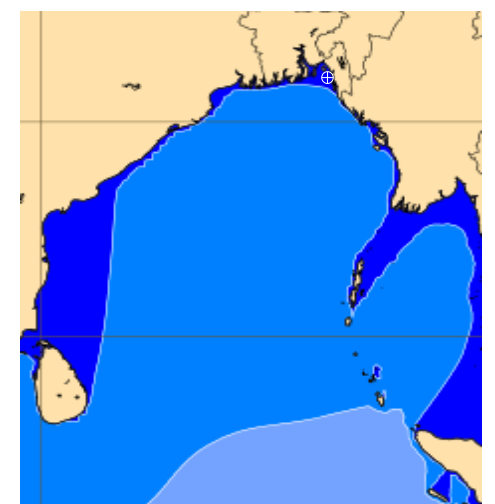
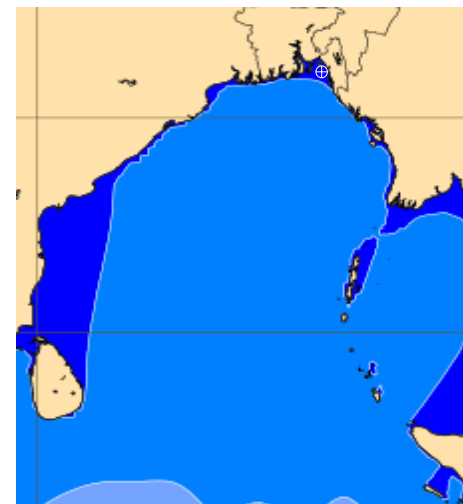
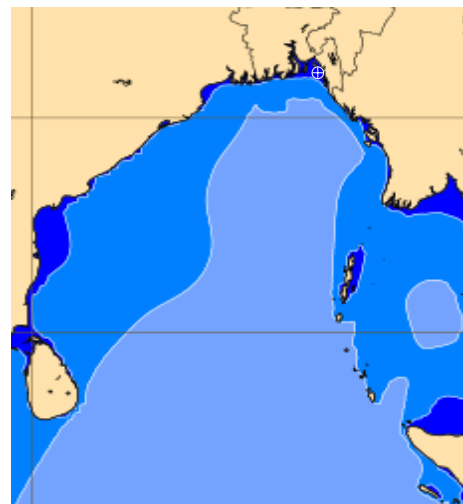
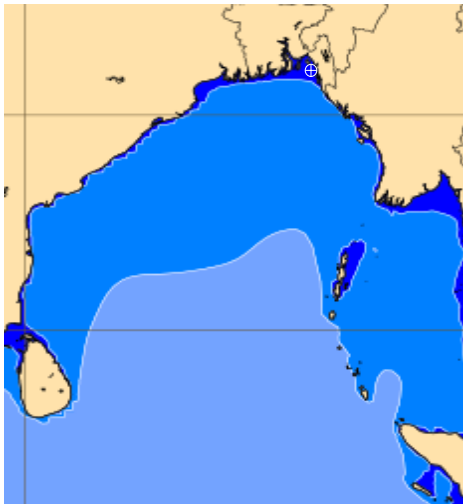
Date	Time	Max Wind Spd (kts)	Wind Direction	Wave Ht (m)	Sea State	Baro Pressure	Air Temp		Sea Surface Temp	Prob of Rain (%)	Sea State	Wave Ht (m)
							Max	Min				
15-05-23	0001	21	ESE	0.4	2	1003	32	27	26	49% (0.4 mm)	0	0
	0600	15	SSE	0.3	2	1004			27	39% (0.2 mm)	1	0 - 0.1
	1200	22	SSW	0.6	3	1004			29	35% (0.2 mm)	2	0.1 - 0.5
	1800	27	S	0.7	3	1003			30	61% (0.5 mm)	3	0.5 - 1.25
16-05-23	0001	20	SE	0.4	2	1005	32	27	29	55% (0.5 mm)	4	1.25 - 2.5
	0600	23	SSE	0.5	2	1005			28	39% (0.3 mm)	5	2.5 - 4.0
	1200	27	SSW	0.7	3	1005			30	51% (0.4 mm)	6	4.0 - 6.0
	1800	26	S	0.6	3	1003			30	24% (0.1 mm)	7	6.0 - 9.0
17-05-23	0001	17	E	0.2	2	1006	32	27	25	49% (0.4 mm)	8	9.0 - 14.0
	0600	23	SE	0.5	2	1007			28	39% (0.2 mm)	9	Over 14.0
	1200	24	S	0.6	3	1007			30	35% (0.2 mm)		
	1800	22	S	0.6	3	1005			29	66% (0.4 mm)		
18-05-23	0001	19	ESE	0.3	2	1005	30	27	25	61% (0.6 mm)		
	0600	18	SE	0.4	2	1007			27	43% (0.4mm)		
	1200	19	S	0.5	2	1007			30	38% (0.3 mm)		
	1800	16	SSW	0.4	2	1006			30	60% (0.6 mm)		

**15 May 23 Mon (Probability 70%)**

**16 May 23 Tue (Probability 60%)**

**17 May 23 Wed (Probability 50%)**

**18 May 23 Thu (Probability 50%)**

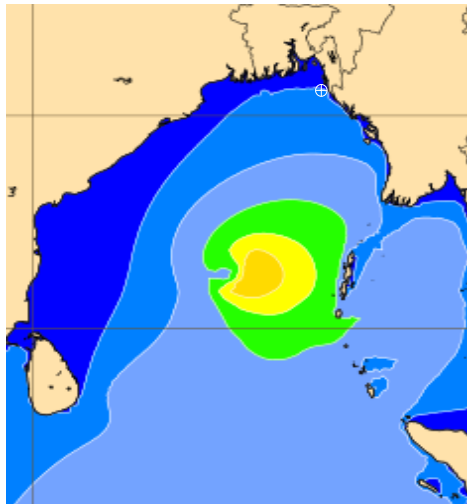


# MARINE WEATHER FORECAST- 20 NM WEST OF ELEPHANT POINT (Lat 21° 10' N, Long 091° 42' E)

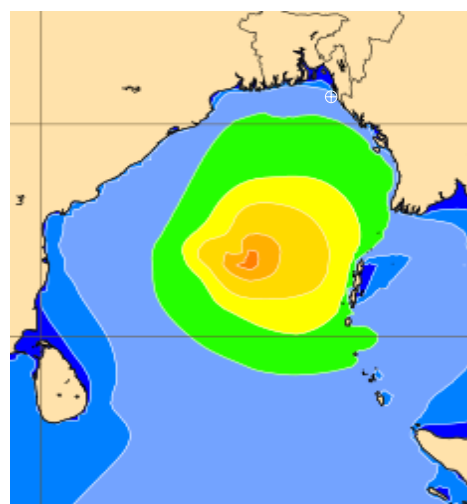
**DATE : 11 to 18 May 2023**

Date	Time	Max Wind Spd (kts)	Wind Direction	Wave Ht (m)	Sea State	Baro Pressure	Air Temp		Sea Surface Temp	Prob of Rain (%)	Sea State	Wave Ht (m)
							Max	Min				
11-05-23	0001	8	SSE	1.0	3	1008	33	27	29	2% (0.0 mm)	0	0
	0600	7	SE	0.9	3	1008			28	8% (0.0 mm)	1	0 - 0.1
	1200	5	SSW	0.8	3	1010			29	2% (0.0 mm)	2	0.1 - 0.5
	1800	10	WSW	0.8	3	1005			29	3% (0.0 mm)	3	0.5 - 1.25
12-05-23	0001	11	SSE	0.8	3	1007	33	27	29	7% (0.0 mm)	4	1.25 - 2.5
	0600	11	SE	1.3	4	1006			29	9% (0.0 mm)	5	2.5 - 4.0
	1200	9	S	1.6	4	1006			29	20% (0.0 mm)	6	4.0 - 6.0
	1800	17	SSE	2.7	5	1004			28	24% (0.0 mm)	7	6.0 - 9.0
13-05-23	0001	28	ESE	3.0	5	1005	29	26	27	33% (0.2 mm)	8	9.0 - 14.0
	0600	24	ESE	2.8	5	1004			27	54% (0.6 mm)	9	Over 14.0
	1200	18	ESE	2.9	5	1005			25	81% (1.7 mm)		
	1800	17	NNE	2.8	5	1001			25	78% (1.2 mm)		
14-05-23	0001	24	NE	4.0	5	1002	28	25	25	54% (0.6 mm)		
	0600	16	N	4.5	6	996			26	65% (0.7 mm)		
	1200	49	NNW	4.1	6	990			26	55% (0.6 mm)		
	1800	19	NW	2.0	4	999			27	67% (0.7 mm)		

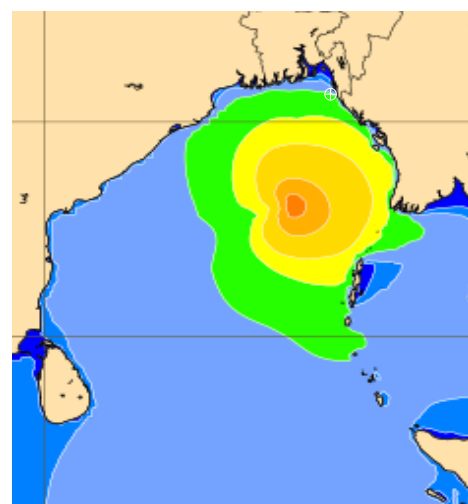
**11 May 23 Thu (Probability 98%)**



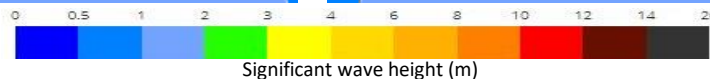
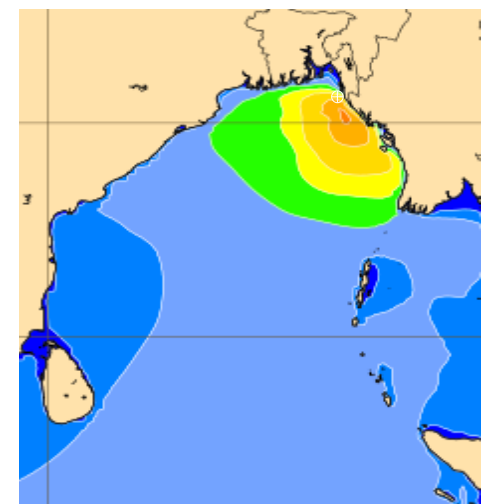
**12 May 23 Fri (Probability 95%)**



**13 May 23 Sat (Probability 90%)**



**14 May 23 Sun (Probability 80%)**



# MARINE WEATHER FORECAST- 20 NM WEST OF ELEPHANT POINT (Lat 21° 10' N, Long 091° 42' E)

**DATE : 11 to 18 May 2023**

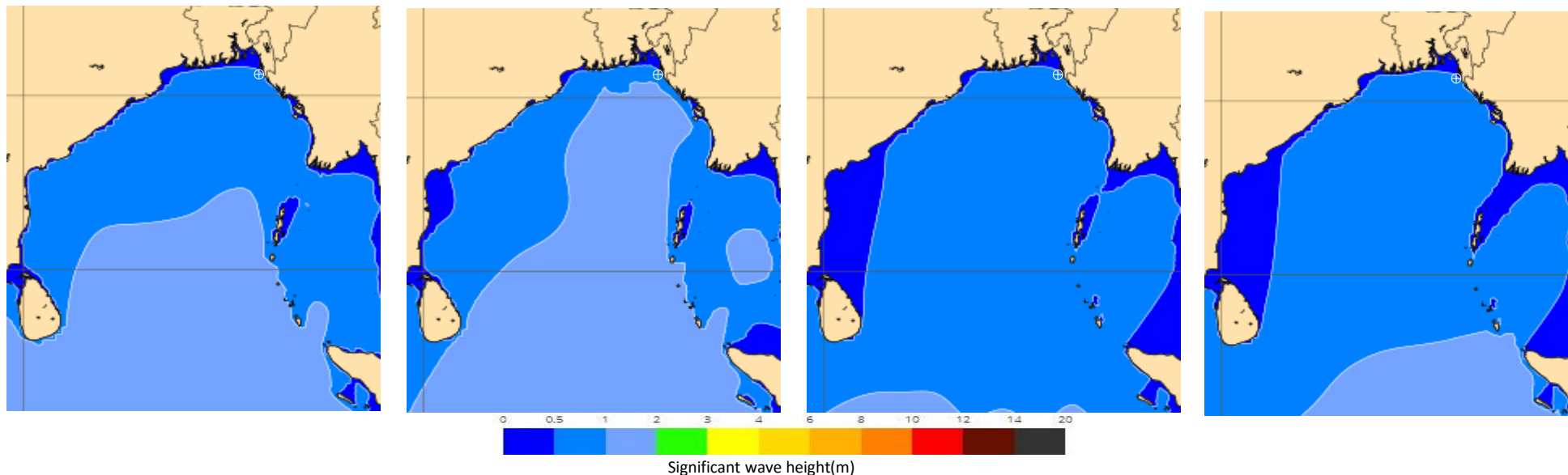
Date	Time	Max Wind Spd (kts)	Wind Direction	Wave Ht (m)	Sea State	Baro Pressure	Air Temp		Sea Surface Temp	Prob of Rain (%)	Sea State	Wave Ht (m)
							Max	Min				
15-05-23	0001	20	SE	1.8	4	1004	32	27	28	36% (0.2 mm)	0	0
	0600	22	SE	2.2	4	1004			28	58% (0.4 mm)	1	0 - 0.1
	1200	23	SE	2.4	4	1005			29	67% (0.6 mm)	2	0.1 - 0.5
	1800	22	SSE	2.3	4	1003			30	61% (0.5 mm)	3	0.5 - 1.25
16-05-23	0001	24	SSE	2.3	4	1004	31	27	30	59% (0.5 mm)	4	1.25 - 2.5
	0600	21	SE	2.3	4	1005			29	39% (0.3 mm)	5	2.5 - 4.0
	1200	24	SSE	2.4	4	1005			30	51% (0.4 mm)	6	4.0 - 6.0
	1800	24	S	2.2	4	1003			30	32% (0.2 mm)	7	6.0 - 9.0
17-05-23	0001	15	S	2.2	4	1006	31	27	30	49% (0.4 mm)	8	9.0 - 14.0
	0600	17	SSE	2.2	4	1007			30	39% (0.2 mm)	9	Over 14.0
	1200	21	SSE	2.3	4	1008			30	35% (0.2 mm)		
	1800	21	SSE	2.3	4	1005			30	70% (0.8 mm)		
18-05-23	0001	8	SSW	2.1	4	1007	31	27	30	61% (0.6 mm)		
	0600	14	SSE	2.0	4	1007			29	43% (0.4mm)		
	1200	17	SSE	2.1	4	1008			29	38% (0.3 mm)		
	1800	12	S	2.0	4	1006			30	60% (0.6 mm)		

**15 May 23 Mon (Probability 70%)**

**16 May 23 Tue (Probability 60%)**

**17 May 23 Wed (Probability 50%)**

**18 May 23 Thu (Probability 50%)**

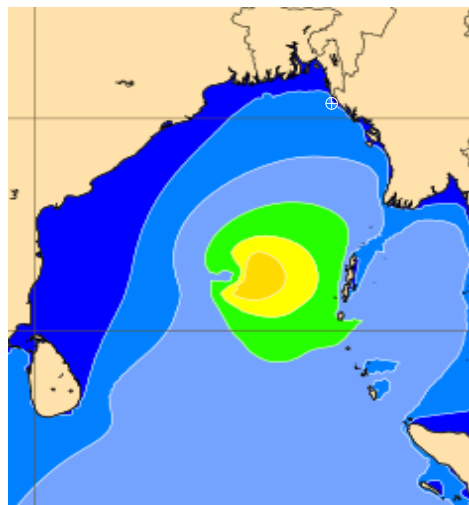


# MARINE WEATHER FORECAST- 15 NM WEST OF ST. MARTIN'S LIGHT HOUSE (Lat 20° 37'N, Long 092° 03'E)

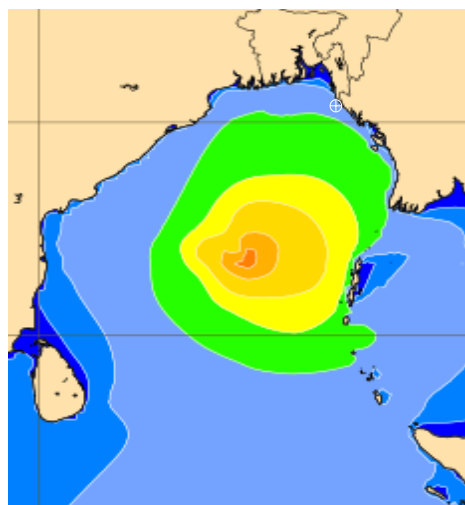
**DATE : 11 to 18 May 2023**

Date	Time	Max Wind Spd (kts)	Wind Direction	Wave Ht (m)	Sea State	Baro Pressure	Air Temp		Sea Surface Temp	Prob of Rain (%)	Sea State	Wave Ht (m)
							Max	Min				
11-05-23	0001	7	SSE	1.1	3	1008	33	27	29	3% (0.0 mm)	0	0
	0600	5	SE	1.0	3	1008			29	7% (0.0 mm)	1	0 - 0.1
	1200	5	SSE	1.0	3	1010			29	7% (0.0 mm)	2	0.1 - 0.5
	1800	10	WSW	1.0	3	1005			29	4% (0.0 mm)	3	0.5 - 1.25
12-05-23	0001	7	SE	1.2	3	1008	32	26	29	7% (0.0 mm)	4	1.25 - 2.5
	0600	12	SE	1.8	4	1006			29	8% (0.0 mm)	5	2.5 - 4.0
	1200	16	SE	2.4	4	1008			28	3% (0.0 mm)	6	4.0 - 6.0
	1800	26	SE	3.6	5	1004			27	4% (0.0 mm)	7	6.0 - 9.0
13-05-23	0001	31	E	3.7	5	1005	28	26	26	6% (0.0 mm)	8	9.0 - 14.0
	0600	24	E	3.9	5	1004			26	19% (0.0 mm)	9	Over 14.0
	1200	10	NE	3.9	5	1005			25	58% (0.6 mm)		
	1800	27	NE	4.2	6	1000			27	44% (0.5 mm)		
14-05-23	0001	27	ENE	6.2	7	102	28	26	25	57% (0.6 mm)		
	0600	51	ENE	7.3	7	992			26	69% (0.7 mm)		
	1200	75	N	9.0	7	976			25	66% (0.8 mm)		
	1800	29	WNW	4.5	6	998			28	84% (1.2 mm)		

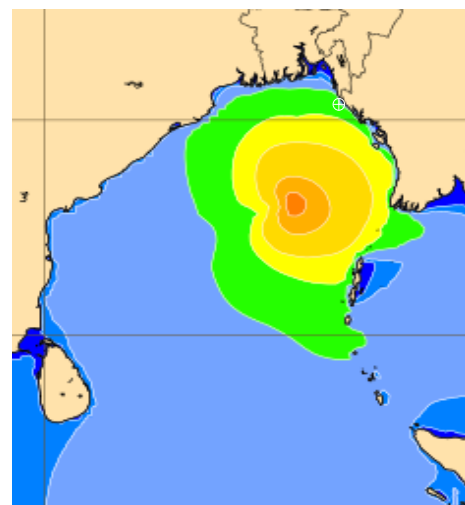
**11 May 23 Thu (Probability 98%)**



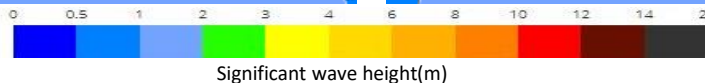
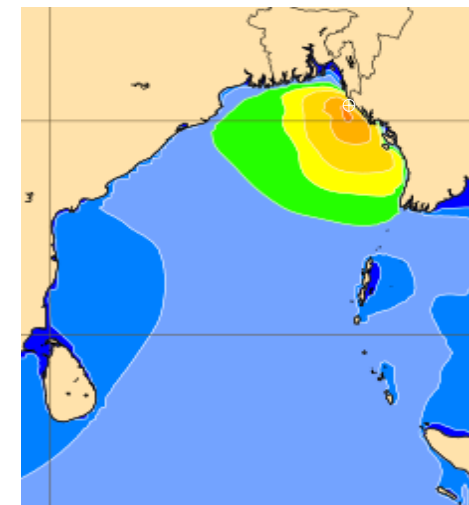
**12 May 23 Fri (Probability 95%)**



**13 May 23 Sat (Probability 90%)**



**14 May 23 Sun (Probability 80%)**



Significant wave height(m)



# MARINE WEATHER FORECAST- 15 NM WEST OF ST. MARTIN'S LIGHT HOUSE (Lat 20° 37'N, Long 092° 03'E)

**DATE : 11 to 18 May 2023**

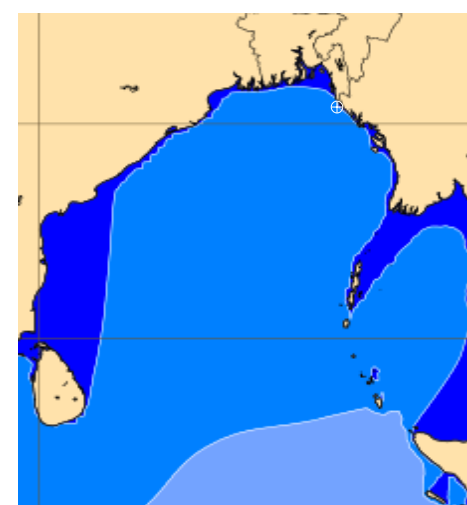
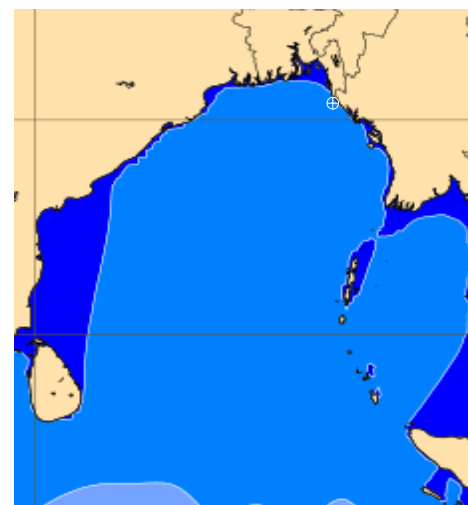
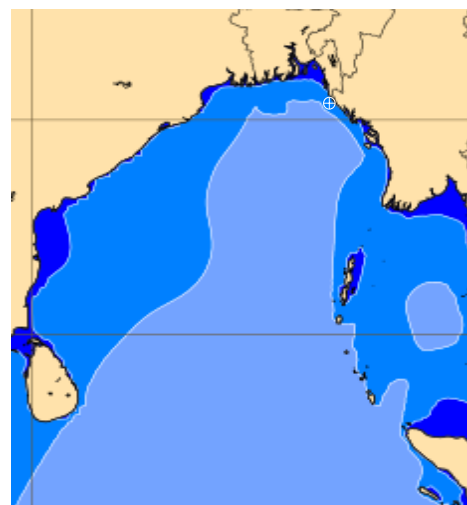
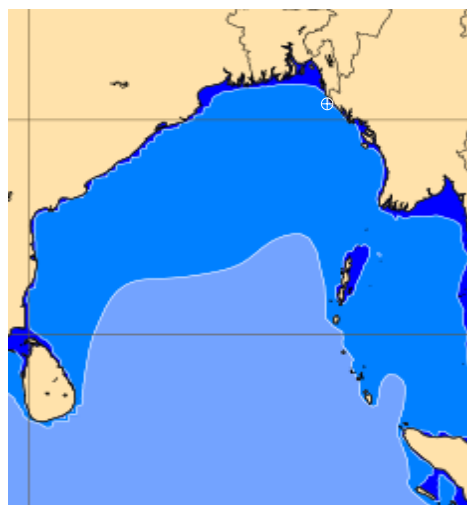
Date	Time	Max Wind Spd (kts)	Wind Direction	Wave Ht (m)	Sea State	Baro Pressure	Air Temp		Sea Surface Temp	Prob of Rain (%)	Sea State	Wave Ht (m)
							Max	Min				
15-05-23	0001	17	ESE	2.3	4	1005	31	27	28	67% (1.2 mm)	0	0
	0600	20	SE	2.7	5	1004			28	80% (2.8 mm)	1	0 - 0.1
	1200	20	SE	2.7	5	1006			29	84% (3.5 mm)	2	0.1 - 0.5
	1800	16	SE	2.6	5	1003			30	74% (3.2mm)	3	0.5 - 1.25
16-05-23	0001	18	S	2.6	5	1005	31	27	30	55% (0.5 mm)	4	1.25 - 2.5
	0600	19	SE	2.6	5	1004			30	68% (1.2 mm)	5	2.5 - 4.0
	1200	15	SE	2.6	5	1007			30	88% (2.8 mm)	6	4.0 - 6.0
	1800	22	S	2.7	5	1004			31	84% (3.5 mm)	7	6.0 - 9.0
17-05-23	0001	23	SSW	2.7	5	1006	31	27	31	74% (3.2mm)	8	9.0 - 14.0
	0600	13	S	2.7	5	1006			30	55% (0.5 mm)	9	Over 14.0
	1200	11	S	2.7	5	1010			30	67% (1.2 mm)		
	1800	16	S	2.7	5	1007			30	70% (2.8 mm)		
18-05-23	0001	17	SSW	2.7	5	1008	31	27	30	72% (3.5 mm)		
	0600	11	S	2.5	4	1006			30	71% (3.2mm)		
	1200	10	S	2.5	4	1009			30	55% (0.6 mm)		
	1800	15	SSW	2.4	4	1006			30	62% (1.2 mm)		

**15 May 23 Mon (Probability 70%)**

**16 May 23 Tue (Probability 60%)**

**17 May 23 Wed (Probability 50%)**

**18 May 23 Thu (Probability 50%)**



0 0.5 1 2 3 4 6 8 10 12 14 20

Significant wave height(m)

**MARINE WEATHER FORECAST- 40 NM ESE OF PAYRA FAIRWAY (Lat 21° 07'N, Long 090° 45' E)**

**DATE : 11 to 18 May 2023**

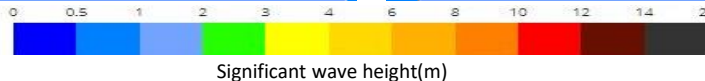
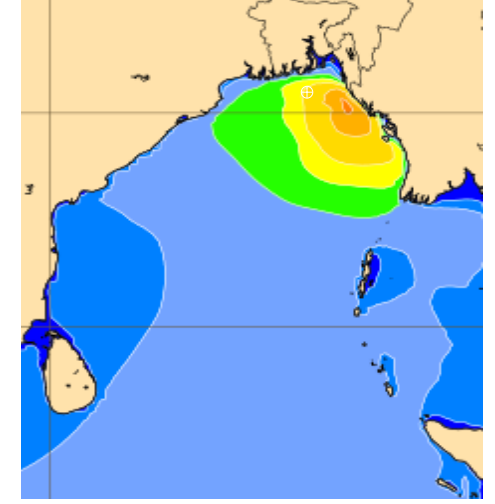
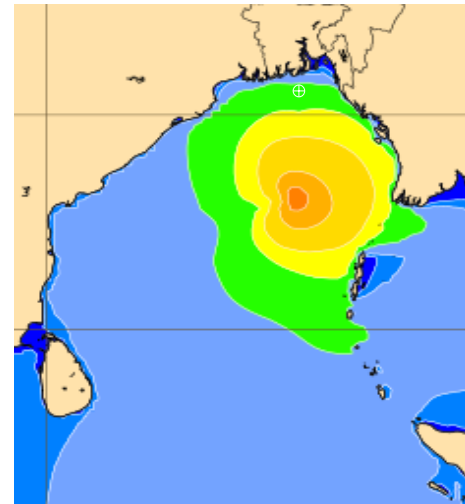
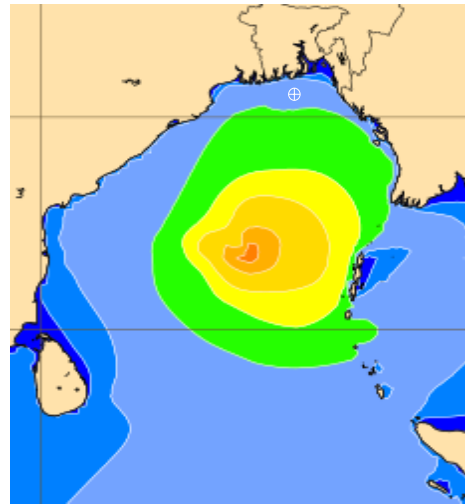
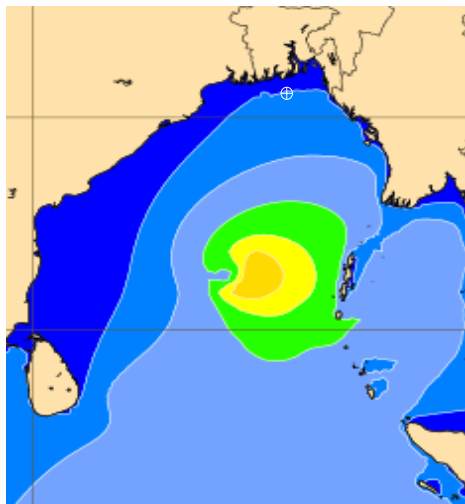
Date	Time	Max Wind Spd (kts)	Wind Direction	Wave Ht (m)	Sea State	Baro Pressure	Air Temp		Sea Surface Temp	Prob of Rain (%)	Sea State	Wave Ht (m)
							Max	Min				
11-05-23	0001	11	S	1.2	3	1007	32	29	29	2% (0.0 mm)	0	0
	0600	9	SSE	1.0	3	1008			29	7% (0.0 mm)	1	0 - 0.1
	1200	4	SSW	1.0	3	1009			29	3% (0.0 mm)	2	0.1 - 0.5
	1800	5	SW	0.9	3	1005			29	4% (0.0 mm)	3	0.5 - 1.25
12-05-23	0001	15	SSE	1.2	3	1006	32	28	29	7% (0.0 mm)	4	1.25 - 2.5
	0600	12	SSE	1.9	4	1006			29	10% (0.0 mm)	5	2.5 - 4.0
	1200	10	SE	2.3	4	1007			29	11% (0.0 mm)	6	4.0 - 6.0
	1800	15	SE	3.6	5	1004			28	6% (0.0 mm)	7	6.0 - 9.0
13-05-23	0001	22	ESE	4.1	6	1005	30	28	28	19% (0.0 mm)	8	9.0 - 14.0
	0600	25	ESE	4.3	6	1003			28	34% (0.2 mm)	9	Over 14.0
	1200	23	ESE	4.3	6	1004			27	44% (0.5 mm)		
	1800	25	ENE	4.1	6	1000			26	19% (0.0 mm)		
14-05-23	0001	31	NNE	5.8	6	999	30	28	27	40% (0.4 mm)		
	0600	34	NE	5.9	6	997			27	52% (0.5 mm)		
	1200	31	NNW	4.2	6	996			28	49% (0.5 mm)		
	1800	14	WNW	2.3	4	999			30	38% (0.3 mm)		

**11 May 23 Thu (Probability 98%)**

**12 May 23 Fri (Probability 95%)**

**13 May 23 Sat (Probability 90%)**

**14 May 23 Sun (Probability 80%)**



Significant wave height(m)

**MARINE WEATHER FORECAST- 40 NM ESE OF PAYRA FAIRWAY (Lat 21° 07'N, Long 090° 45' E)**

**DATE : 11 to 18 May 2023**

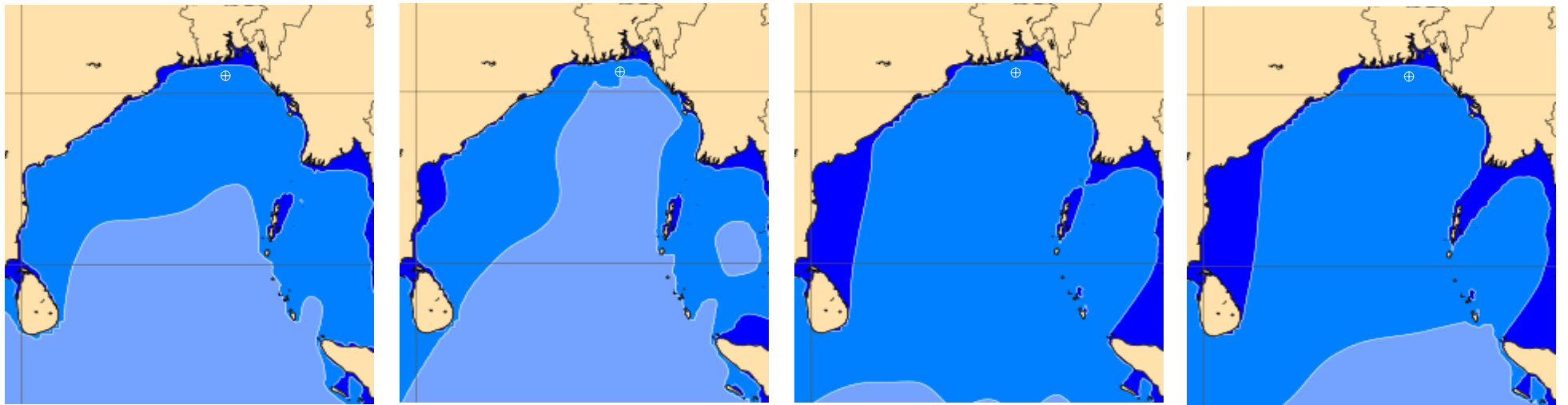
Date	Time	Max Wind Spd (kts)	Wind Direction	Wave Ht (m)	Sea State	Baro Pressure	Air Temp		Sea Surface Temp	Prob of Rain (%)	Sea State	Wave Ht (m)
							Max	Min				
15-05-23	0001	18	SSE	2.3	4	1002	31	30	30	30% (0.0 mm)	0	0
	0600	18	SSE	2.6	5	1003			30	41% (0.4 mm)	1	0 - 0.1
	1200	22	S	2.8	5	1004			31	34% (0.2 mm)	2	0.1 - 0.5
	1800	21	SSW	2.8	5	1002			30	24% (0.0 mm)	3	0.5 - 1.25
16-05-23	0001	26	S	2.9	5	1003	31	29	31	48% (0.4 mm)	4	1.25 - 2.5
	0600	20	S	2.9	5	1004			31	41% (0.3 mm)	5	2.5 - 4.0
	1200	27	S	2.9	5	1004			30	56% (1.2 mm)	6	4.0 - 6.0
	1800	28	SSW	2.9	5	1002			31	49% (1.3 mm)	7	6.0 - 9.0
17-05-23	0001	18	SSW	2.9	5	1005	31	29	30	54% (0.4 mm)	8	9.0 - 14.0
	0600	19	SSW	2.9	5	1006			31	41% (0.4 mm)	9	Over 14.0
	1200	22	SSW	3.0	5	1007			31	34% (0.2 mm)		
	1800	24	SSW	3.0	5	1004			30	24% (0.0 mm)		
18-05-23	0001	14	S	2.9	5	1006	31	29	30	30% (0.0 mm)		
	0600	18	SSW	2.7	5	1007			30	41% (0.4 mm)		
	1200	21	SSW	2.7	5	1007			31	34% (0.2 mm)		
	1800	20	SSW	2.7	5	1005			30	24% (0.0 mm)		

**15 May 23 Mon (Probability 70%)**

**16 May 23 Tue (Probability 60%)**

**17 May 23 Wed (Probability 50%)**

**18 May 23 Thu (Probability 50%)**



Significant wave height (m)

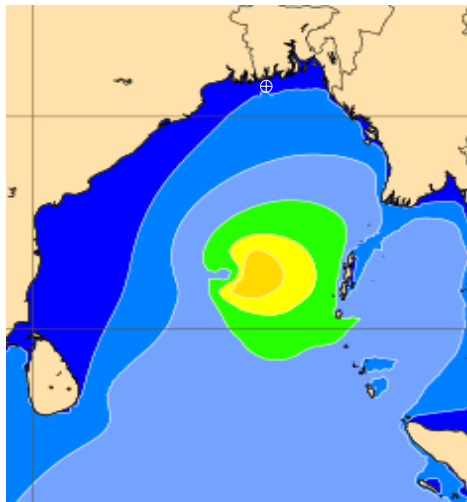


# MARINE WEATHER FORECAST- 10 NM SOUTH OF MONGLA FAIRWAY (Lat 21° 16' N, Long 089° 34' E)

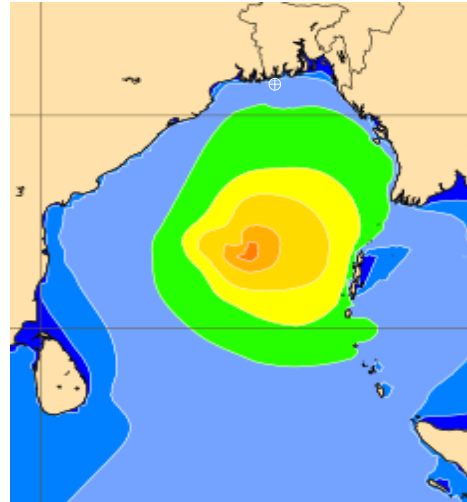
**DATE : 11 to 18 May 2023**

Date	Time	Max Wind Spd (kts)	Wind Direction	Wave Ht (m)	Sea State	Baro Pressure	Air Temp		Sea Surface Temp	Prob of Rain (%)	Sea State	Wave Ht (m)
							Max	Min				
11-05-23	0001	14	SSW	1.2	3	1006	38	27	30	3% (0.0 mm)	0	0
	0600	8	SSW	1.1	3	1008			30	4% (0.0 mm)	1	0 - 0.1
	1200	6	S	1.0	3	1009			31	5% (0.0 mm)	2	0.1 - 0.5
	1800	6	S	0.9	3	1006			30	4% (0.0 mm)	3	0.5 - 1.25
12-05-23	0001	15	SSW	1.1	3	1006	37	28	31	5% (0.0 mm)	4	1.25 - 2.5
	0600	10	SSE	1.7	4	1006			30	2% (0.0 mm)	5	2.5 - 4.0
	1200	9	SE	2.2	4	1006			31	6% (0.0 mm)	6	4.0 - 6.0
	1800	13	SE	3.1	5	1004			30	9% (0.0 mm)	7	6.0 - 9.0
13-05-23	0001	19	ESE	3.5	5	1005	34	27	28	11% (0.0 mm)	8	9.0 - 14.0
	0600	20	E	3.9	5	1003			29	24% (0.0 mm)	9	Over 14.0
	1200	18	E	3.8	5	1004			30	20% (0.0 mm)		
	1800	21	E	3.6	5	1001			29	14% (0.0 mm)		
14-05-23	0001	35	ENE	4.9	6	999	35	27				
	0600	34	N	4.4	6	998						
	1200	19	WNW	3.3	5	998						
	1800	20	WSW	2.8	5	999						

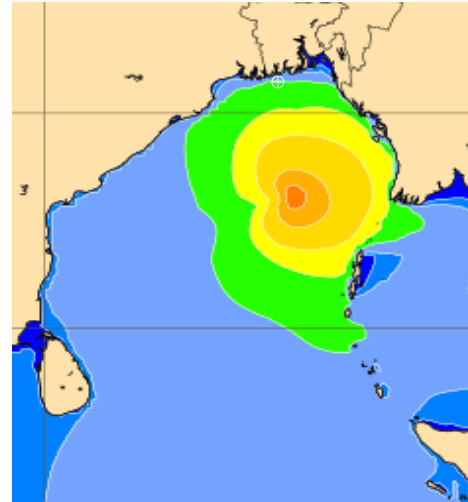
**11 May 23 Thu (Probability 98%)**



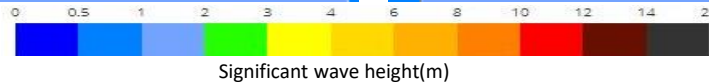
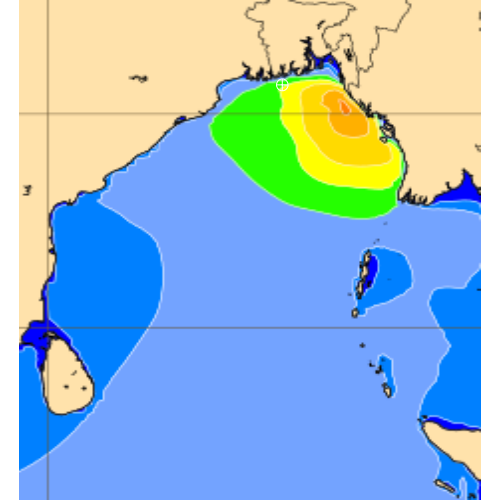
**12 May 23 Fri (Probability 95%)**



**13 May 23 Sat (Probability 90%)**



**14 May 23 Sun (Probability 80%)**



Significant wave height(m)

# MARINE WEATHER FORECAST- 10 NM SOUTH OF MONGLA FAIRWAY (Lat 21° 16' N, Long 089° 34' E)

**DATE : 11 to 18 May 2023**

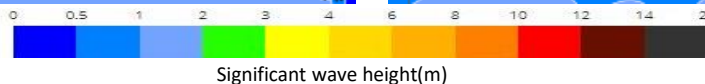
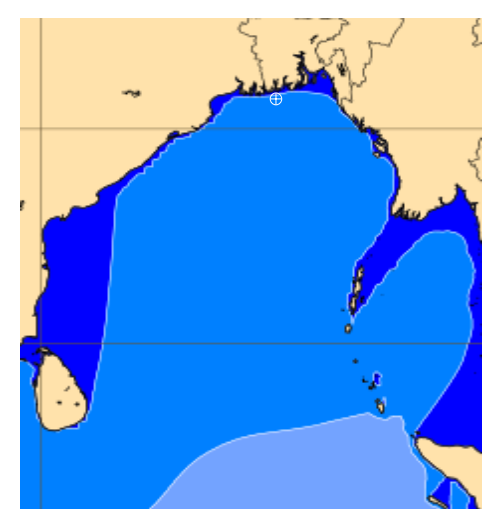
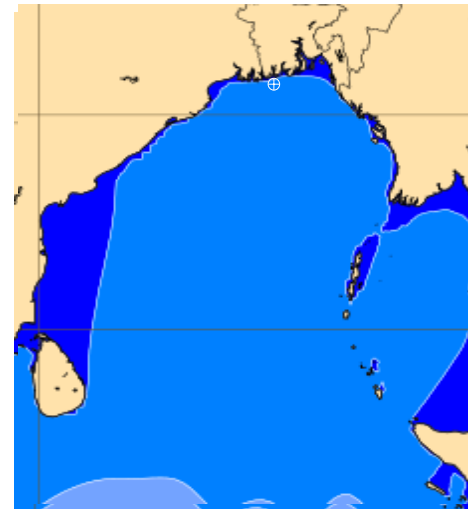
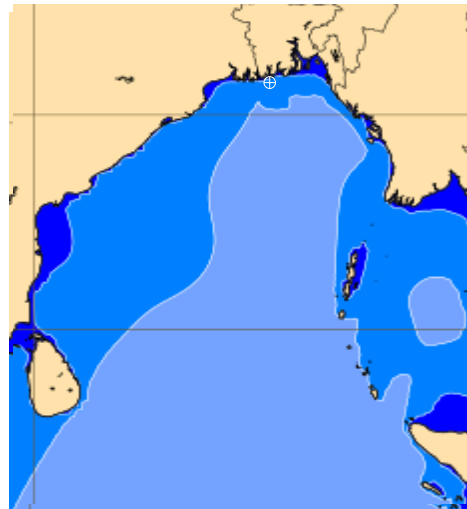
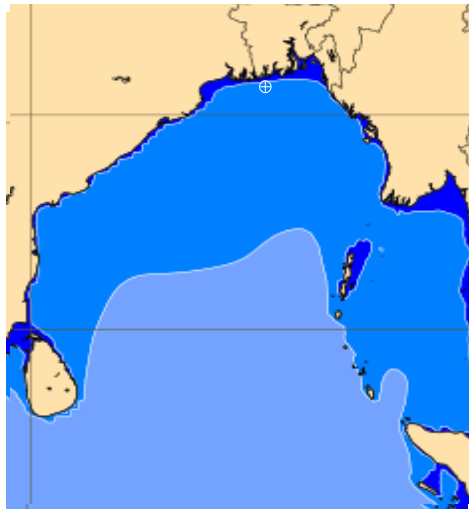
Date	Time	Max Wind Spd (kts)	Wind Direction	Wave Ht (m)	Sea State	Baro Pressure	Air Temp		Sea Surface Temp	Prob of Rain (%)	Sea State	Wave Ht (m)
							Max	Min				
15-05-23	0001	21	S	2.4	4	1001	37	29	30	15% (0.0 mm)	0	0
	0600	18	S	2.5	4	1002			30	31% (0.2 mm)	1	0 - 0.1
	1200	23	S	2.7	5	1003			30	17% (0.0 mm)	2	0.1 - 0.5
	1800	21	S	2.8	5	1001			30	24% (0.0 mm)	3	0.5 - 1.25
16-05-23	0001	28	S	3.0	5	1002	36	29	30	41% (0.4 mm)	4	1.25 - 2.5
	0600	20	S	3.0	5	1003			30	34% (0.2 mm)	5	2.5 - 4.0
	1200	23	SSW	2.9	5	1005			30	24% (0.0 mm)	6	4.0 - 6.0
	1800	25	SSW	3.0	5	1002			30	41% (0.4 mm)	7	6.0 - 9.0
17-05-23	0001	17	SSE	3.0	5	1004	35	29	30	24% (0.1 mm)	8	9.0 - 14.0
	0600	21	SSW	3.0	5	1005			30	12% (0.0 mm)	9	Over 14.0
	1200	25	SSW	3.0	5	1006			30	24% (0.0 mm)		
	1800	25	SSW	3.1	5	1003			31	22% (0.0 mm)		
18-05-23	0001	18	S	2.9	5	1005	34	29	30	35% (0.2 mm)		
	0600	20	SSW	2.8	5	1005			30	39% (0.4 mm)		
	1200	23	SSW	2.8	5	1006			30	54% (0.6 mm)		
	1800	17	SW	2.7	5	1005			30	44% (0.5 mm)		

**15 May 23 Mon (Probability 70%)**

**16 May 23 Tue (Probability 60%)**

**17 May 23 Wed (Probability 50%)**

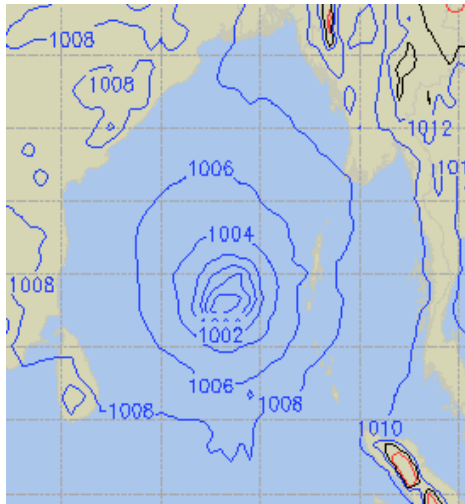
**18 May 23 Thu (Probability 50%)**



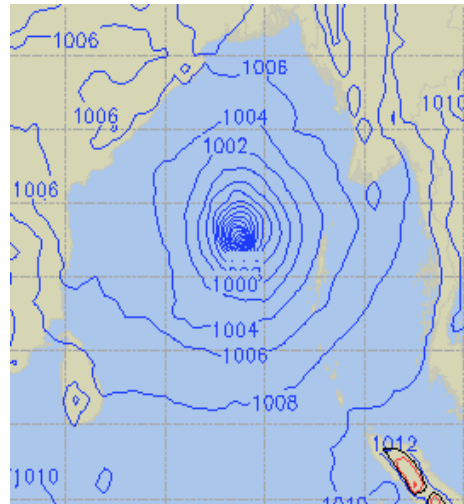
Significant wave height(m)

## PREDICTED SURFACE PRESSURE FORECAST (11 to 17 May 2023)

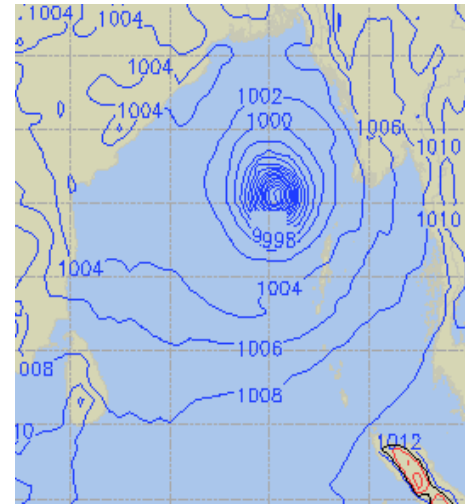
**11 May 23 Thu (Probability 98%)**



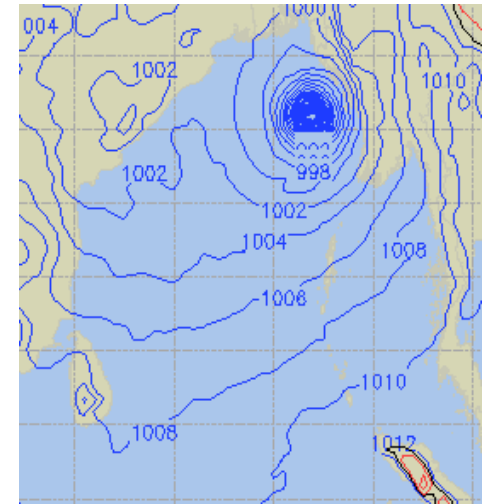
**12 May 23 Fri (Probability 95%)**



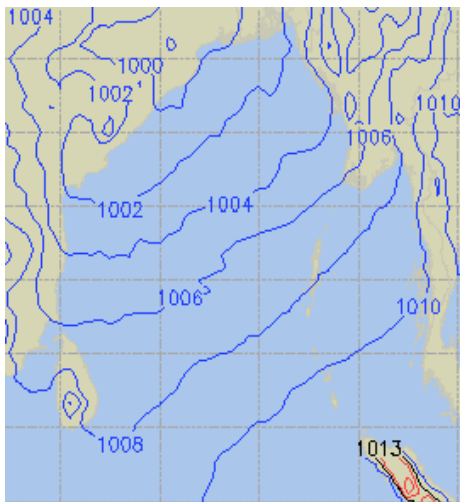
**13 May 23 Sat (Probability 90%)**



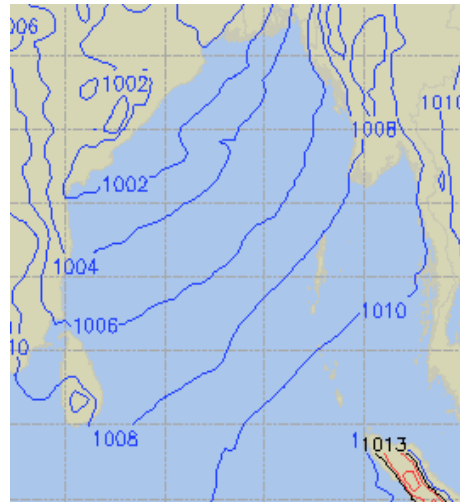
**14 May 23 Sun (Probability 80%)**



**15 May 23 Mon (Probability 70%)**



**16 May 23 Tue (Probability 60%)**



**17 May 23 Wed (Probability 50%)**

