



SUMMARY OF MARINE WEATHER FORECAST
COASTAL AREA OF BANGLADESH
DATE: 11 to 18 April 2025



Fleet forecast	The Well-Marked Low over Southwest Bay and adjoining West central Bay moved northwards, weakened into a low pressure area and now lies over West central Bay and adjoining area. It is likely to move north-northeastwards and weaken gradually during next 12 hours. Trough of low lies over West Bengal and adjoining area.
Wind direction, speed	South/South-Easterly 10 kts, (Temporary gusting up to 18 kts).
Wave height & sea state	Wave height: 0.2 to 1.6 m (Sea state:1 to 4).
Sea surface temperature	26°C - 29°C (May remain nearly unchanged).
Baro pressure	1007-1012 mb.
Rainfall	Light Rain/thunder showers with lightning flashes and temporary gusty wind is likely to occur over Bay of Bengal & adjoining area.
Fog	Hazy condition over the coastal area during late night to early morning.

Outlook for 11 to 18 April 2025 : Weather may remain partly cloudy sky & temporary gusty/squally wind is likely to occur over Bay of Bengal & adjoining area. Day and night temperature may rise.



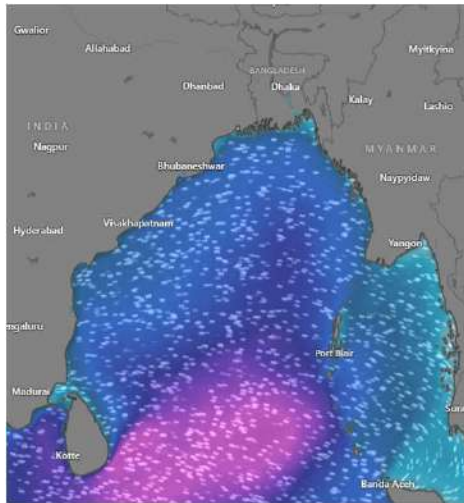
MARINE WEATHER FORECAST (11 to 18 April 2025)

PATENGA POINT (22° 12' N, 091° 38' E)

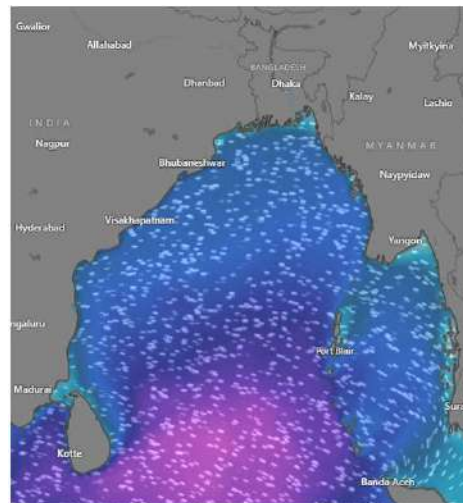


Date	Time	Air Temp (°C)		Sea Surface Temp (°C)	Baro Pressure (mbar)	Wind Direction	Wind Spd (kts)		Wave Ht (m)	Sea State	Humidity (%)	Prob of Rain (%)	Amount of Rain (mm)
		Max	Min				Gusting	Avg					
11-04-25 (Friday)	0001	33	25	27	1008	S	10	5	0.3	2	89	42	0.4
	0600			26	1009	SE	13	8	0.2	2	90	68	12
	1200			29	1007	SSW	11	5	0.2	2	64	43	0.5
	1800			28	1008	SSW	12	6	0.3	2	77	12	0.0
12-04-25 (Saturday)	0001	33	25	27	1008	S	14	9	0.3	2	86	10	0.0
	0600			26	1009	E	10	5	0.2	2	88	9	0.0
	1200			29	1007	SW	12	6	0.2	2	67	17	0.0
	1800			28	1008	SW	11	7	0.2	2	78	10	0.0
13-04-25 (Sunday)	0001	33	25	27	1007	SSW	12	7	0.3	2	92	19	0.0
	0600			26	1010	NE	10	5	0.2	2	91	10	0.0
	1200			29	1008	W	12	8	0.2	2	67	9	0.0
	1800			28	1009	SW	13	9	0.3	2	74	12	0.0
14-04-25 (Monday)	0001	33	25	27	1008	SSE	8	4	0.3	2	91	17	0.0
	0600			26	1011	SE	11	7	0.3	2	90	18	0.0
	1200			29	1009	SE	12	6	0.2	2	67	11	0.0
	1800			28	1010	SSW	10	5	0.2	2	77	23	0.0

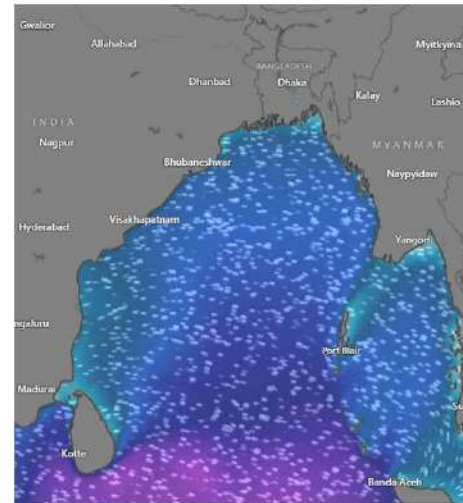
11 April 2025



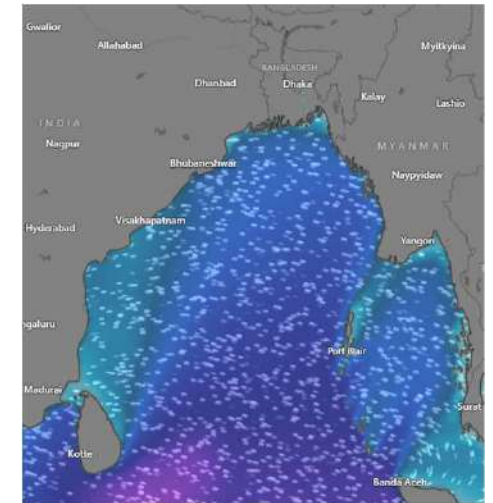
12 April 2025



13 April 2025



14 April 2025



Significant wave height (m)



MARINE WEATHER FORECAST (11 to 18 April 2025)

PATENGA POINT (22° 12' N, 091° 38' E)



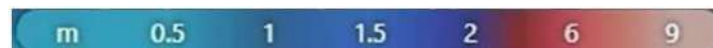
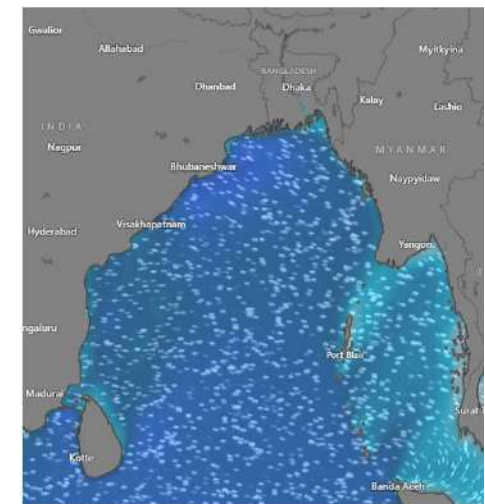
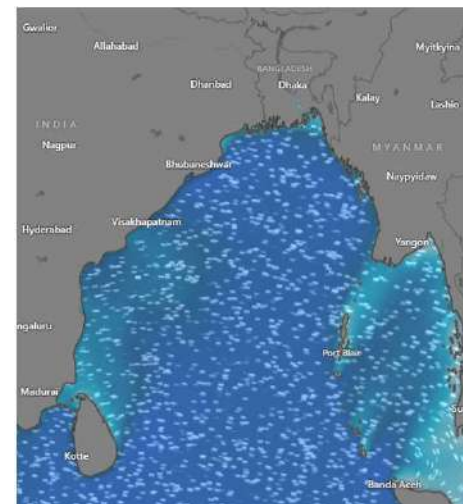
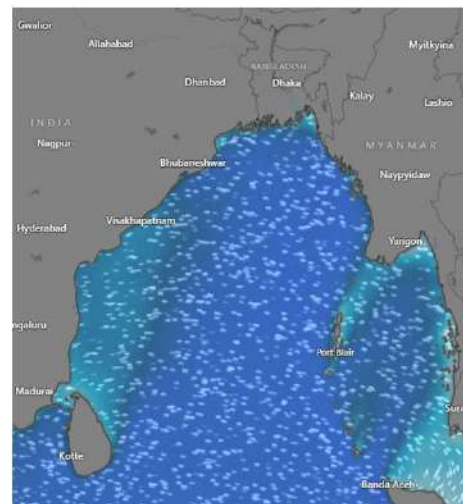
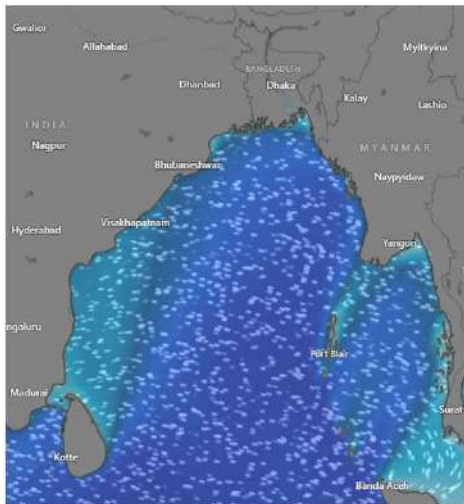
Date	Time	Air Temp (°C)		Sea Surface Temp (°C)	Baro Pressure (mbar)	Wind Direction	Wind Spd (kts)		Wave Ht (m)	Sea State	Humidity (%)	Prob of Rain (%)	Amount of Rain (mm)
		Max	Min				Gusting	Avg					
15-04-25 (Tuesday)	0001	33	25	27	1007	SSW	13	9	0.2	2	92	59	0.6
	0600			26	1011	SSE	12	8	0.2	2	91	35	0.2
	1200			29	1007	SSW	14	10	0.3	2	77	24	0.1
	1800			28	1008	SW	16	11	0.3	2	89	50	0.5
16-04-25 (Wednesday)	0001	33	25	27	1008	SSW	12	7	0.2	2	94	60	0.6
	0600			26	1011	SSE	10	6	0.2	2	92	53	0.5
	1200			29	1007	SW	13	8	0.3	2	81	49	0.5
	1800			28	1009	SW	16	12	0.3	2	89	34	0.2
17-04-25 (Thursday)	0001	33	25	27	1008	SSW	13	8	0.3	2	94	60	0.6
	0600			26	1011	SSE	10	5	0.3	2	92	53	0.5
	1200			29	1007	SW	12	8	0.2	2	81	49	0.5
	1800			28	1009	SW	14	11	0.3	2	89	34	0.2
18-04-25 (Friday)	0001	33	25	27	1008	SSE	13	9	0.3	2	94	66	0.7
	0600			26	1011	SSE	12	7	0.2	2	92	67	0.7
	1200			29	1007	SW	10	6	0.2	2	81	45	0.5
	1800			28	1009	SW	13	10	0.3	2	89	48	0.5

15 April 2025

16 April 2025

17 April 2025

18 April 2025



Significant wave height (m)



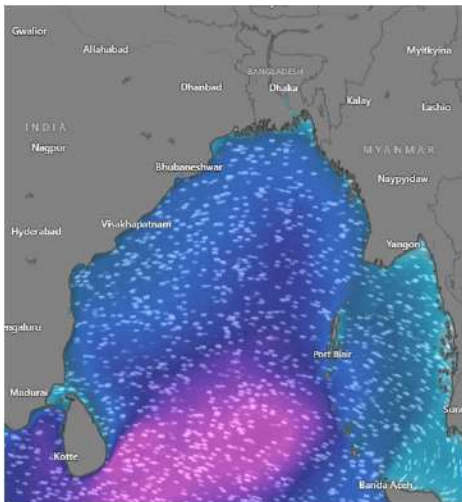
MARINE WEATHER FORECAST (11 to 18 April 2025)

ABEAM TO KUTUBDIA (21° 51' N, 091° 40' E)

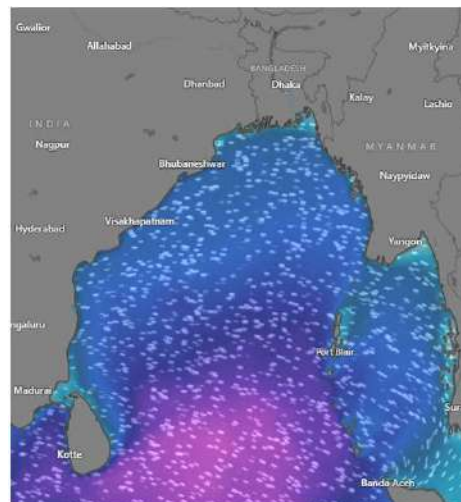


Date	Time	Air Temp (°C)		Sea Surface Temp (°C)	Baro Pressure (mbar)	Wind Direction	Wind Spd (kts)		Wave Ht (m)	Sea State	Humidity (%)	Prob of Rain (%)	Amount of Rain (mm)
		Max	Min				Gusting	Avg					
11-04-25 (Friday)	0001	33	25	27	1008	S	12	7	0.4	2	88	44	0.4
	0600			26	1012	NNE	10	5	0.4	2	90	52	10
	1200			29	1009	SSE	12	6	0.4	2	65	43	0.5
	1800			28	1010	SSW	11	7	0.5	2	76	12	0.0
12-04-25 (Saturday)	0001	33	25	27	1008	SSE	10	6	0.4	2	87	10	0.0
	0600			26	1012	SSE	10	5	0.4	2	89	9	0.0
	1200			29	1009	S	12	7	0.4	2	65	17	0.0
	1800			28	1010	SW	14	9	0.4	2	76	10	0.0
13-04-25 (Sunday)	0001	33	25	27	1008	SSW	7	3	0.4	2	92	20	0.0
	0600			26	1012	SE	9	6	0.4	2	91	13	0.0
	1200			29	1009	SW	13	9	0.4	2	67	10	0.0
	1800			28	1010	W	15	10	0.4	2	74	12	0.0
14-04-25 (Monday)	0001	33	25	27	1008	SSW	12	8	0.5	2	89	17	0.0
	0600			26	1012	SSE	14	9	0.5	2	90	15	0.0
	1200			29	1009	SSW	10	6	0.5	2	66	12	0.0
	1800			28	1010	SW	12	7	0.5	2	74	24	0.1

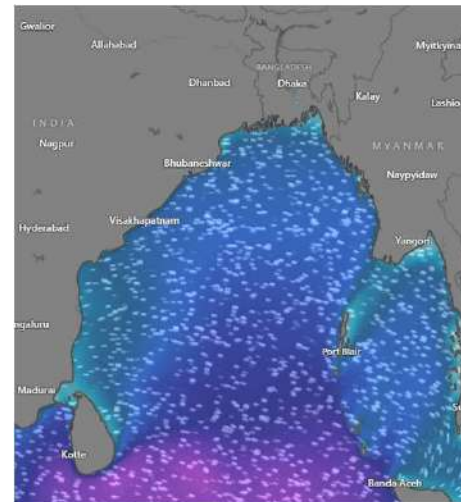
11 April 2025



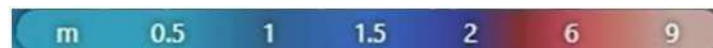
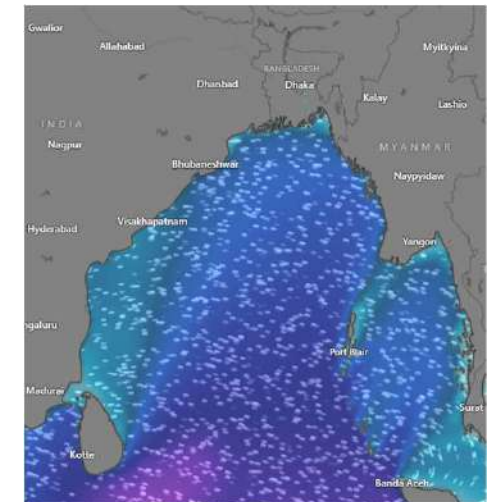
12 April 2025



13 April 2025



14 April 2025



Significant wave height (m)

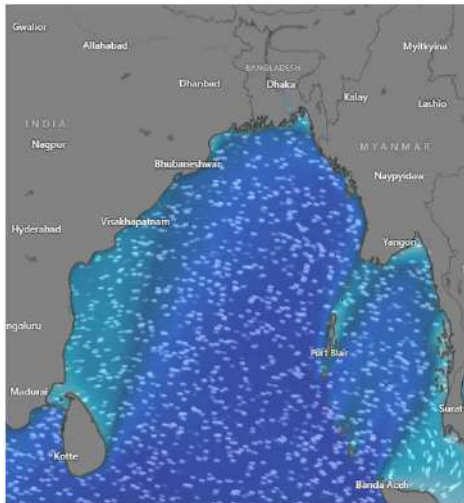


MARINE WEATHER FORECAST (11 to 18 April 2025) ABEAM TO KUTUBDIA (21° 51' N, 091° 40' E)

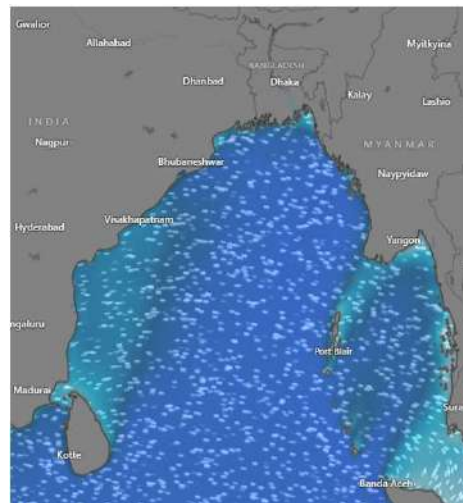


Date	Time	Air Temp (°C)		Sea Surface Temp (°C)	Baro Pressure (mbar)	Wind Direction	Wind Spd (kts)		Wave Ht (m)	Sea State	Humidity (%)	Prob of Rain (%)	Amount of Rain (mm)
		Max	Min				Gusting	Avg					
15-04-25 (Tuesday)	0001	33	25	27	1009	SSW	14	10	0.5	2	91	61	0.6
	0600			26	1012	SSE	13	9	0.5	2	90	37	0.2
	1200			29	1007	SSW	12	8	0.4	2	76	26	0.1
	1800			28	1008	SSW	10	5	0.5	2	88	55	0.5
16-04-25 (Wednesday)	0001	33	25	27	1009	S	12	6	0.5	2	95	64	0.6
	0600			26	1012	SE	14	10	0.5	2	93	52	0.5
	1200			29	1007	SSW	11	7	0.4	2	85	51	0.5
	1800			28	1008	SSW	13	8	0.4	2	89	34	0.2
17-04-25 (Thursday)	0001	33	25	27	1009	SSW	12	7	0.4	2	94	60	0.6
	0600			26	1012	SE	10	5	0.5	2	92	53	0.5
	1200			29	1007	SSW	13	8	0.4	2	81	49	0.5
	1800			28	1008	SW	15	10	0.5	2	89	34	0.2
18-04-25 (Friday)	0001	33	25	27	1009	NNE	14	10	0.5	2	95	67	0.7
	0600			26	1012	S	10	5	0.4	2	93	66	0.7
	1200			29	1007	SSW	11	6	0.4	2	85	47	0.5
	1800			28	1008	SW	13	7	0.4	2	88	50	0.5

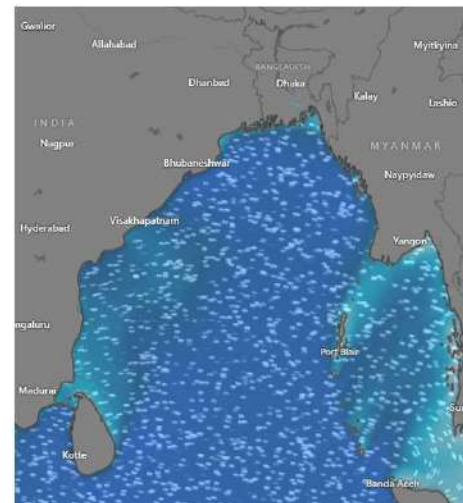
15 April 2025



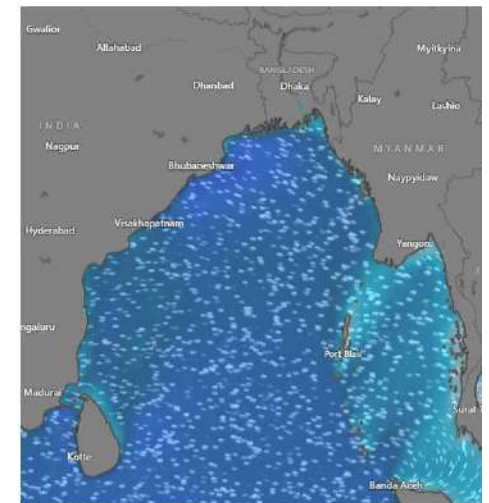
16 April 2025



17 April 2025



18 April 2025



Significant wave height (m)



MARINE WEATHER FORECAST (11 to 18 April 2025) ABEAM TO ELEPHANT POINT (21° 11' N, 091° 52' E)



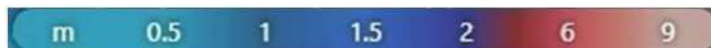
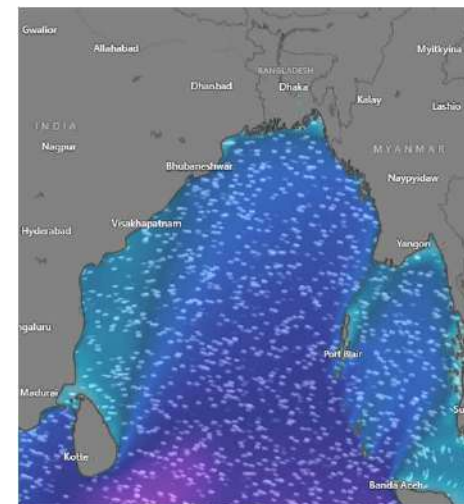
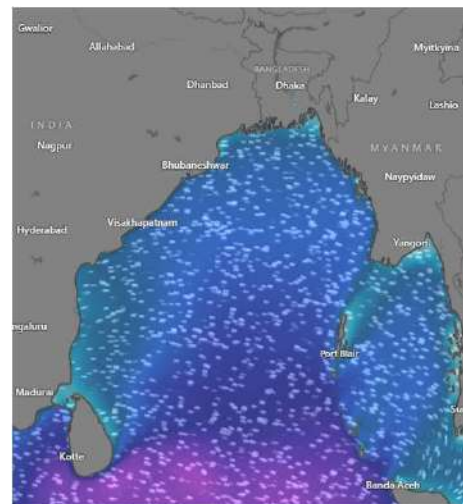
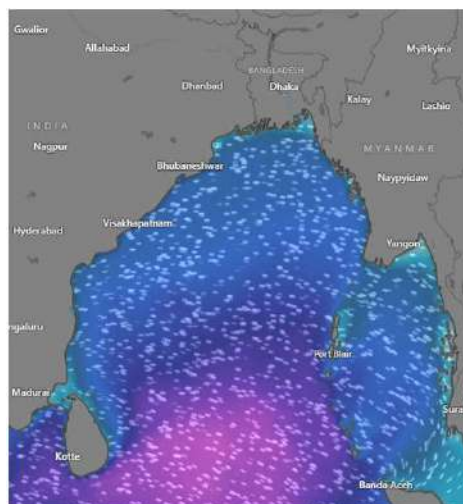
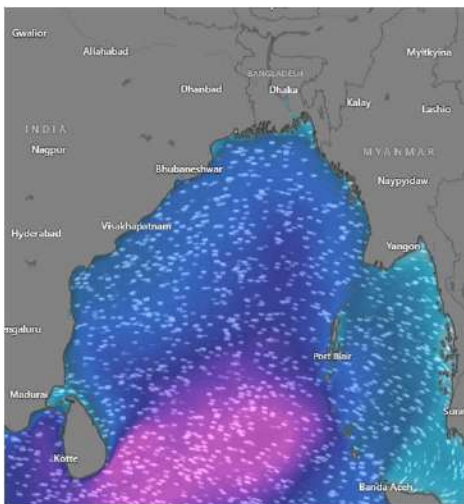
Date	Time	Air Temp (°C)		Sea Surface Temp (°C)	Baro Pressure (mbar)	Wind Direction	Wind Spd (kts)		Wave Ht (m)	Sea State	Humidity (%)	Prob of Rain (%)	Amount of Rain (mm)
		Max	Min				Gusting	Avg					
11-04-25 (Friday)	0001	33	25	27	1008	S	10	6	1.0	3	94	61	0.6
	0600			26	1012	SSW	11	5	1.2	3	90	87	10
	1200			29	1009	SSE	12	7	1.2	3	75	37	0.4
	1800			28	1010	SSE	14	10	1.2	3	86	42	0.5
12-04-25 (Saturday)	0001	33	25	27	1008	SSE	13	9	1.2	3	91	45	0.5
	0600			26	1012	E	14	11	1.2	3	92	30	0.2
	1200			29	1009	SW	12	8	1.2	3	72	15	0.0
	1800			28	1010	W	11	7	1.1	3	83	12	0.0
13-04-25 (Sunday)	0001	33	25	27	1008	SSE	10	6	1.1	3	94	47	0.5
	0600			26	1012	E	11	7	1.1	3	92	19	0.0
	1200			29	1009	S	10	5	1.1	3	75	8	0.0
	1800			28	1010	SSE	12	8	1.1	3	86	10	0.0
14-04-25 (Monday)	0001	33	25	27	1008	SE	11	7	1.2	3	94	51	0.5
	0600			26	1012	SSE	12	8	1.2	3	92	22	0.0
	1200			29	1009	SSE	10	6	1.2	3	75	10	0.0
	1800			28	1010	SSE	13	8	1.2	3	86	14	0.0

11 April 2025

12 April 2025

13 April 2025

14 April 2025



Significant wave height (m)



MARINE WEATHER FORECAST (11 to 18 April 2025) ABEAM TO ELEPHANT POINT (21° 11' N, 091° 52' E)



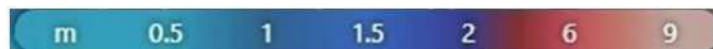
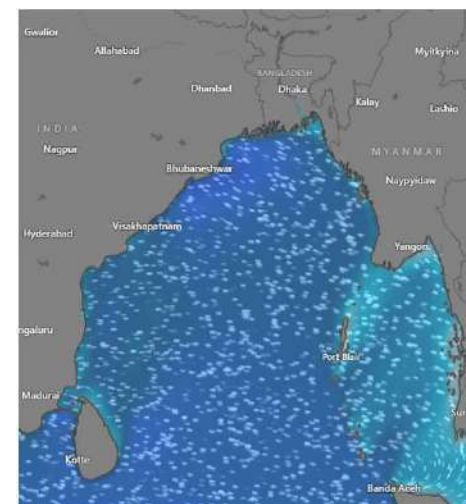
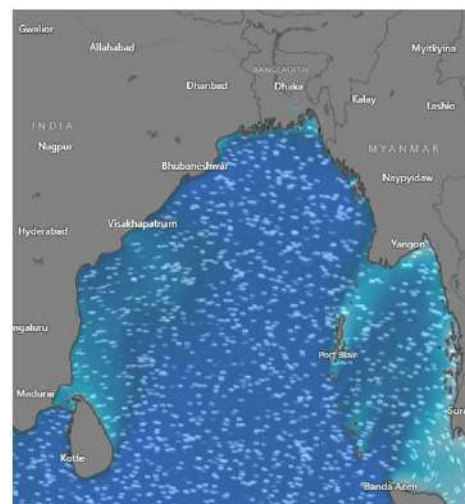
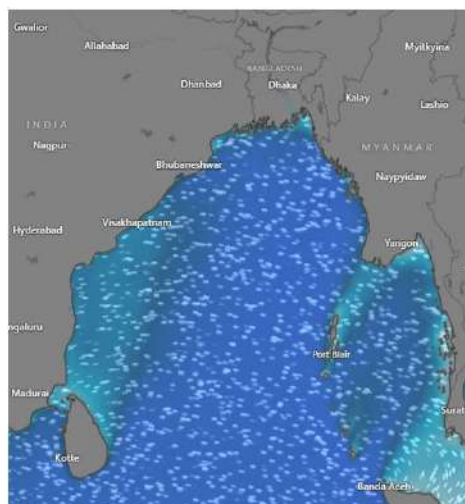
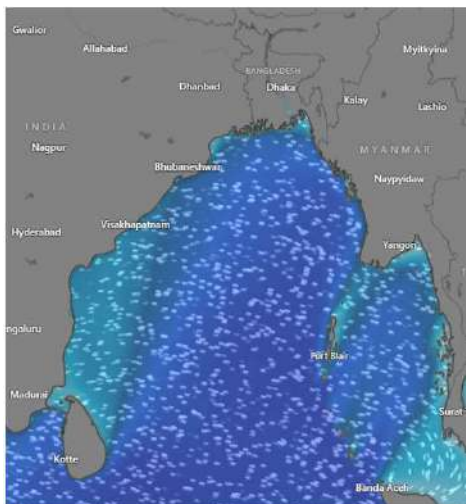
Date	Time	Air Temp (°C)		Sea Surface Temp (°C)	Baro Pressure (mbar)	Wind Direction	Wind Spd (kts)		Wave Ht (m)	Sea State	Humidity (%)	Prob of Rain (%)	Amount of Rain (mm)
		Max	Min				Gusting	Avg					
15-04-25 (Tuesday)	0001	33	25	27	1008	W	11	6	1.2	3	92	52	0.5
	0600			26	1012	NNW	9	5	1.1	3	91	31	0.2
	1200			29	1009	W	10	7	1.1	3	76	26	0.1
	1800			28	1010	NW	13	9	1.3	4	89	35	0.3
16-04-25 (Wednesday)	0001	33	25	27	1008	NW	12	6	1.3	4	95	66	0.6
	0600			26	1012	SSE	12	7	1.3	4	93	54	0.5
	1200			29	1009	SSW	15	11	1.3	4	82	45	0.5
	1800			28	1010	SW	17	10	1.3	4	88	36	0.3
17-04-25 (Thursday)	0001	33	25	27	1008	NW	12	7	1.3	4	95	66	0.6
	0600			26	1012	SSE	12	6	1.3	4	93	54	0.5
	1200			29	1009	SSW	15	11	1.3	4	82	45	0.5
	1800			28	1010	SW	16	14	1.3	4	88	36	0.3
18-04-25 (Friday)	0001	33	25	27	1008	NW	11	7	1.3	4	95	66	0.6
	0600			26	1012	SSE	12	8	1.3	4	93	54	0.5
	1200			29	1009	SSW	14	10	1.3	4	82	45	0.5
	1800			28	1010	SW	14	9	1.3	4	88	36	0.3

15 April 2025

16 April 2025

17 April 2025

18 April 2025



Significant wave height (m)



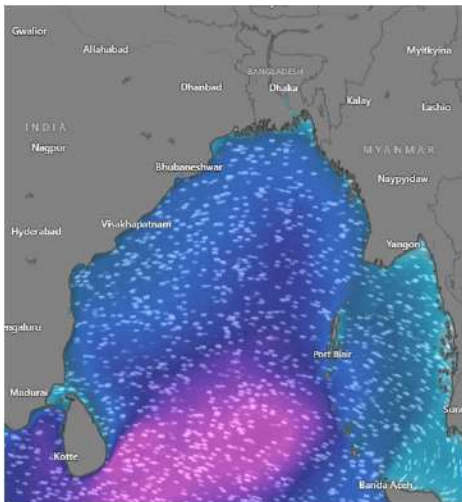
MARINE WEATHER FORECAST (11 to 18 April 2025)

ABEAM TO ST. MARTIN'S LIGHT HOUSE (20° 37' N, 092° 08' E)

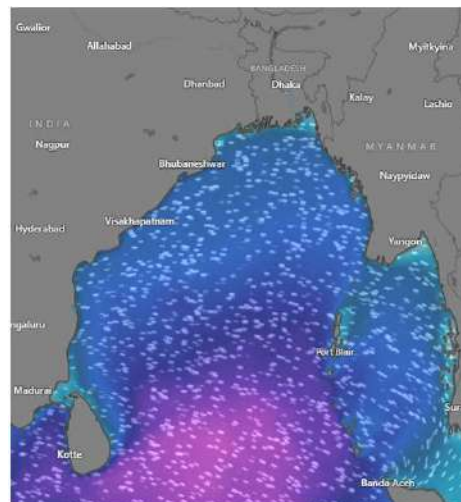


Date	Time	AirTemp (°C)		Sea Surface Temp (°C)	Baro Pressure (mbar)	Wind Direction	Wind Spd (kts)		Wave Ht (m)	Sea State	Humidity (%)	Prob of Rain (%)	Amount of Rain (mm)
		Max	Min				Gusting	Avg					
11-04-25 (Friday)	0001	32	25	27	1007	SSE	12	6	1.0	3	94	35	0.2
	0600			26	1009	SE	18	8	1.3	3	92	55	0.5
	1200			29	1007	S	15	10	1.2	3	75	26	0.1
	1800			28	1008	SSE	14	7	1.2	3	86	30	0.2
12-04-25 (Saturday)	0001	33	25	27	1007	SSE	13	9	1.3	4	94	54	0.5
	0600			26	1011	SE	14	9	1.3	4	91	30	0.2
	1200			29	1008	SW	12	5	1.2	3	75	15	0.0
	1800			28	1009	SW	10	4	1.2	3	85	19	0.0
13-04-25 (Sunday)	0001	33	25	27	1008	SSE	9	5	1.1	3	96	56	0.5
	0600			26	1012	E	12	7	1.1	3	94	30	0.2
	1200			29	1009	S	10	6	1.1	3	72	14	0.0
	1800			28	1010	SW	14	8	1.2	3	85	19	0.0
14-04-25 (Monday)	0001	33	25	27	1008	SSE	9	5	1.1	3	94	56	0.5
	0600			26	1012	E	12	7	1.2	3	92	30	0.2
	1200			29	1009	S	10	8	1.2	3	75	14	0.0
	1800			28	1010	SW	14	5	1.2	3	87	19	0.0

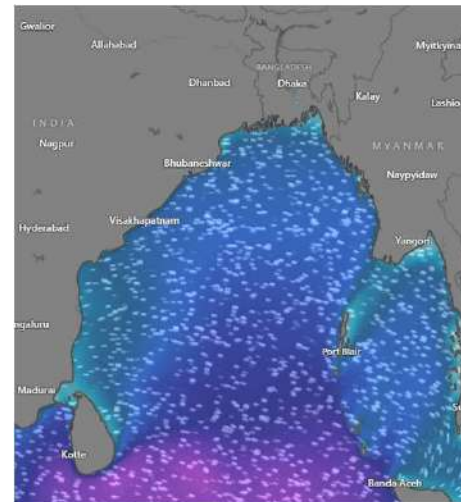
11 April 2025



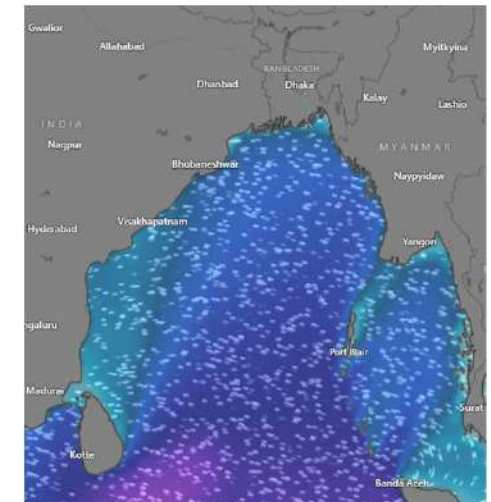
12 April 2025



13 April 2025



14 April 2025



Significant wave height (m)



MARINE WEATHER FORECAST (11 to 18 April 2025)

ABEAM TO ST. MARTIN'S LIGHT HOUSE (20° 37' N, 092° 08' E)



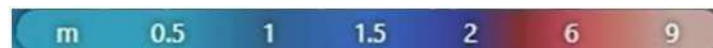
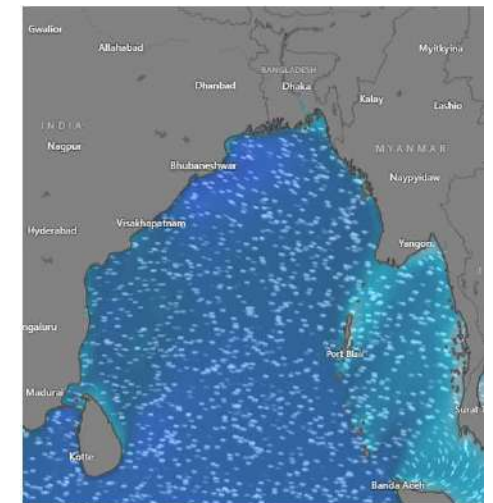
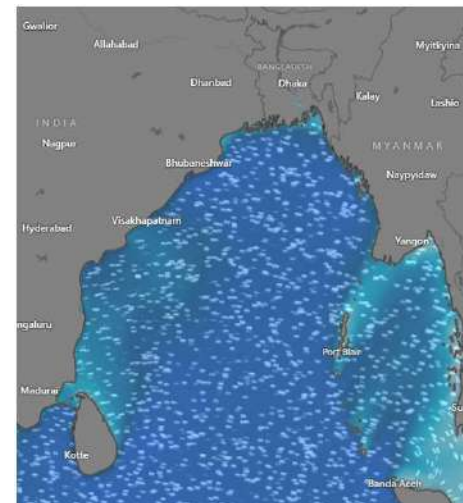
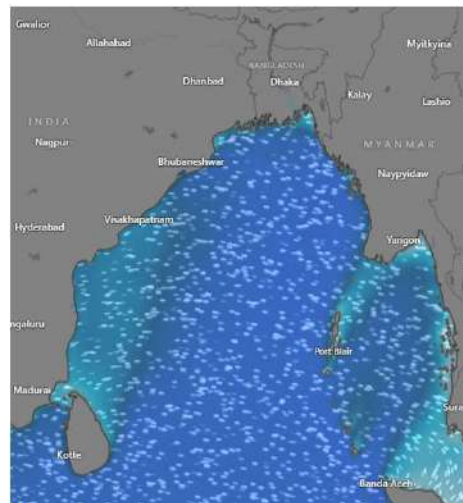
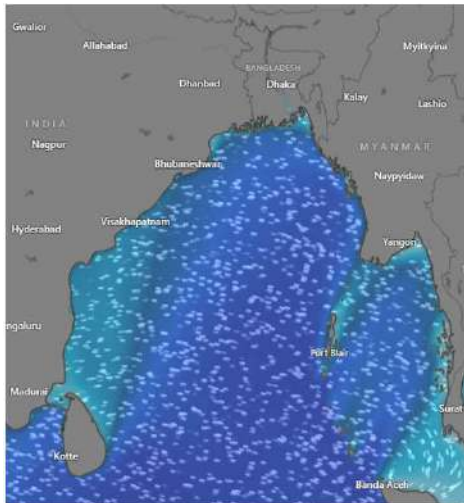
Date	Time	Air Temp (°C)		Sea Surface Temp (°C)	Baro Pressure (mbar)	Wind Direction	Wind Spd (kts)		Wave Ht (m)	Sea State	Humidity (%)	Prob of Rain (%)	Amount of Rain (mm)
		Max	Min				Gusting	Avg					
15-04-25 (Tuesday)	0001	33	25	27	1008	SSE	12	7	1.4	4	92	56	0.6
	0600			26	1011	NNE	12	6	1.4	4	91	35	0.2
	1200			29	1009	SSE	13	9	1.5	4	76	29	0.1
	1800			28	1010	SSW	14	9	1.5	4	89	40	0.4
16-04-25 (Wednesday)	0001	33	25	27	1008	SSW	12	6	1.4	4	95	66	0.6
	0600			26	1011	SSE	13	8	1.4	4	93	54	0.5
	1200			29	1009	SSW	11	7	1.4	4	84	55	0.5
	1800			28	1010	SW	13	8	1.3	4	88	37	0.2
17-04-25 (Thursday)	0001	33	25	27	1008	W	10	5	1.2	3	95	65	0.6
	0600			26	1011	S	11	6	1.2	3	93	55	0.5
	1200			29	1009	W	12	7	1.1	3	84	54	0.5
	1800			28	1010	W	13	9	1.1	3	88	38	0.3
18-04-25 (Friday)	0001	33	25	27	1008	SSE	11	7	1.0	3	94	65	0.6
	0600			26	1011	N	10	6	1.0	3	93	55	0.5
	1200			29	1009	S	11	7	1.0	3	84	54	0.5
	1800			28	1010	SSW	10	8	0.0	3	88	38	0.3

15 April 2025

16 April 2025

17 April 2025

18 April 2025



Significant wave height (m)



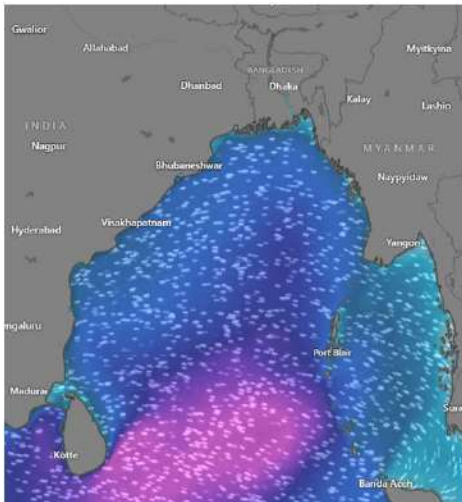
MARINE WEATHER FORECAST (11 to 18 April 2025)

PAYRA FAIRWAY (21° 22' N, 090° 6' E)

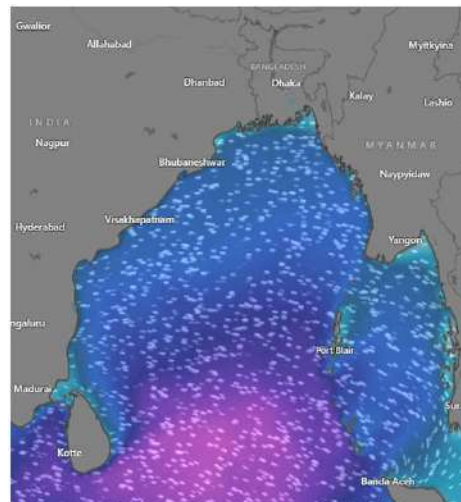


Date	Time	Air Temp (°C)		Sea Surface Temp (°C)	Baro Pressure (mbar)	Wind Direction	Wind Spd (kts)		Wave Ht (m)	Sea State	Humidity (%)	Prob of Rain (%)	Amount of Rain (mm)
		Max	Min				Gusting	Avg					
11-04-25 (Friday)	0001	32	24	27	1009	S	14	8	1.2	3	90	15	0.0
	0600			26	1013	SSE	15	7	1.3	4	89	13	0.0
	1200			29	1010	SSE	16	10	1.3	4	75	5	0.0
	1800			28	1011	SE	12	8	1.4	4	86	9	0.0
12-04-25 (Saturday)	0001	32	24	27	1008	SE	10	6	1.4	4	92	12	0.0
	0600			26	1012	SE	9	7	1.3	4	74	11	0.0
	1200			29	1009	SE	8	5	1.3	4	85	8	0.0
	1800			28	1010	SSW	8	4	1.2	3	89	12	0.0
13-04-25 (Sunday)	0001	33	25	27	1008	SW	10	5	1.1	3	91	10	0.0
	0600			26	1012	SW	9	3	1.1	3	85	14	0.0
	1200			29	1009	SW	8	4	1.1	3	74	8	0.0
	1800			28	1010	SW	10	6	1.1	3	85	13	0.0
14-04-25 (Monday)	0001	33	25	27	1008	SW	10	5	1.1	3	92	14	0.0
	0600			26	1012	SW	9	3	1.1	3	83	17	0.0
	1200			29	1009	S	8	4	1.1	3	75	13	0.0
	1800			28	1010	SW	10	6	1.1	3	84	15	0.0

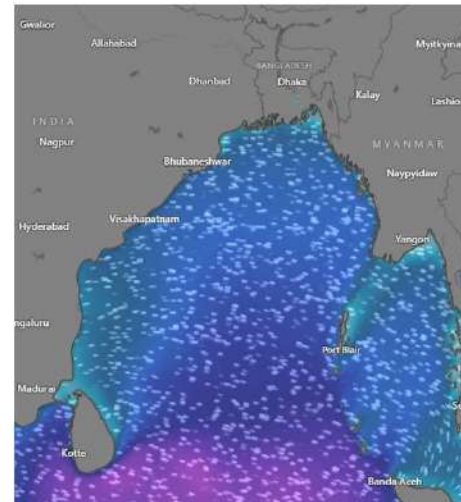
11 April 2025



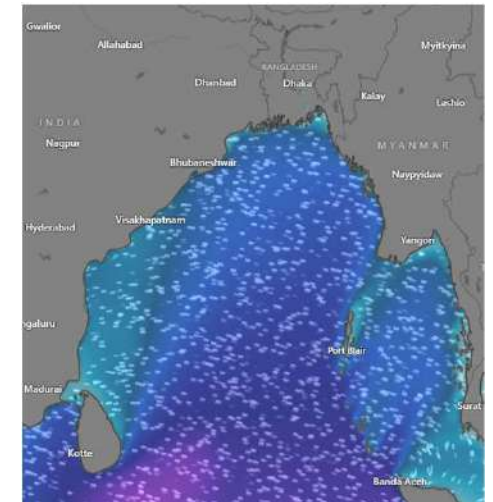
12 April 2025



13 April 2025



14 April 2025



Significant wave height (m)



MARINE WEATHER FORECAST (11 to 18 April 2025)

PAYRA FAIRWAY (21° 22' N, 090° 6' E)



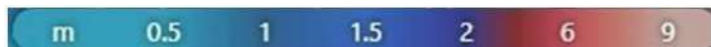
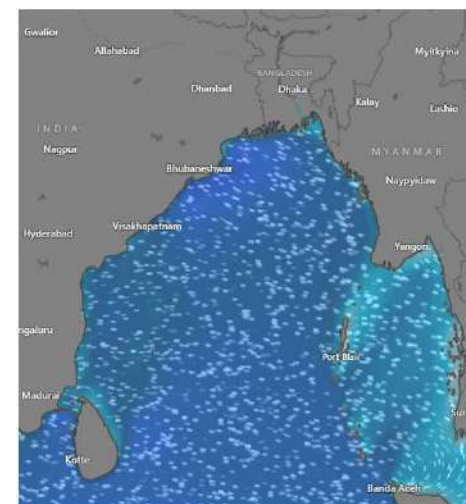
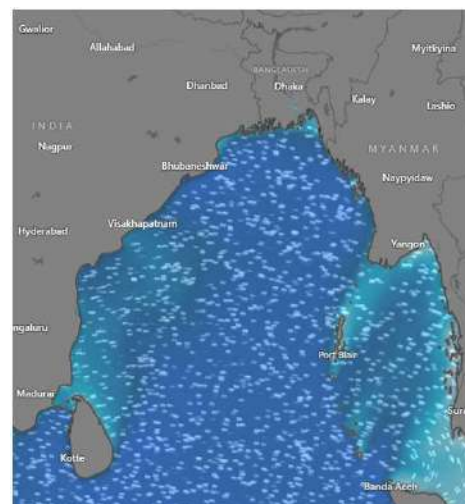
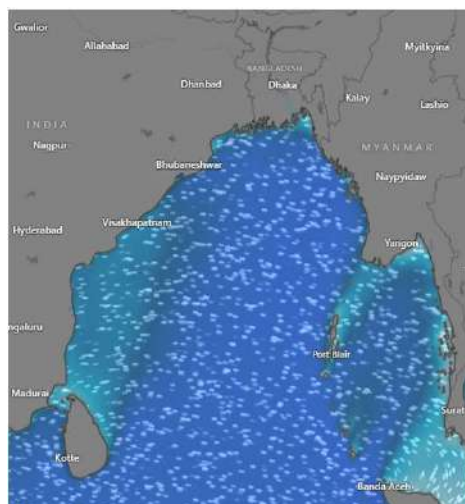
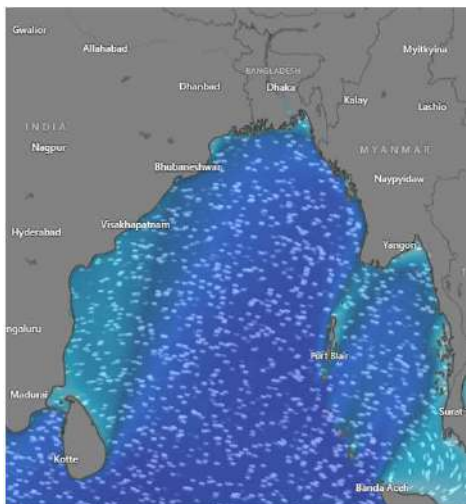
Date	Time	Air Temp (°C)		Sea Surface Temp (°C)	Baro Pressure (mbar)	Wind Direction	Wind Spd (kts)		Wave Ht (m)	Sea State	Humidity (%)	Prob of Rain (%)	Amount of Rain (mm)
		Max	Min				Gusting	Avg					
15-04-25 (Tuesday)	0001	33	25	27	1008	SSW	12	7	1.4	4	92	13	0.0
	0600			26	1012	SW	10	6	1.4	4	91	20	0.0
	1200			29	1009	W	11	8	1.4	4	77	9	0.0
	1800			28	1010	SW	14	5	1.4	4	89	22	0.1
16-04-25 (Wednesday)	0001	33	25	27	1008	SSW	15	8	1.3	4	96	10	0.0
	0600			26	1012	S	15	9	1.3	4	93	15	0.0
	1200			29	1009	SW	13	7	1.2	3	82	8	0.0
	1800			28	1010	SSW	12	6	1.2	3	84	25	0.1
17-04-25 (Thursday)	0001	33	25	27	1008	SSW	11	7	1.2	3	95	10	0.0
	0600			26	1012	SSW	12	8	1.2	3	92	21	0.0
	1200			29	1009	SW	11	6	1.2	3	84	35	0.2
	1800			28	1010	SW	13	9	1.2	3	86	27	0.1
18-04-25 (Friday)	0001	33	25	27	1008	SW	11	7	1.2	3	95	15	0.0
	0600			26	1012	SSW	12	8	1.2	3	92	23	0.1
	1200			29	1009	SW	10	6	1.2	3	84	34	0.2
	1800			28	1010	SSW	12	8	1.2	3	86	27	0.1

15 April 2025

16 April 2025

17 April 2025

18 April 2025



Significant wave height (m)



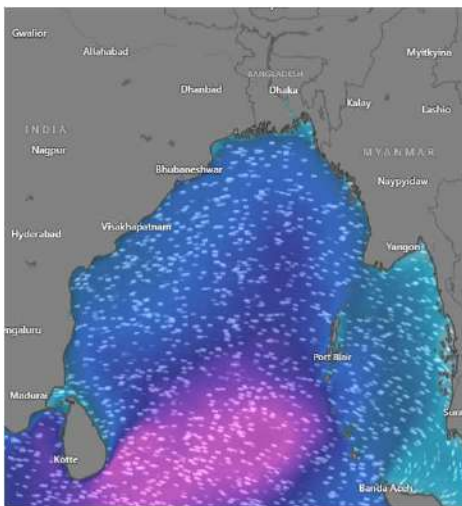
MARINE WEATHER FORECAST (11 to 18 April 2025)

MONGLA FAIRWAY (21° 26' N, 089° 34' E)

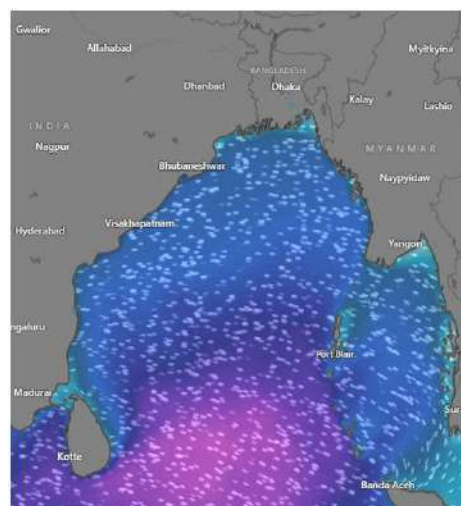


Date	Time	Air Temp (°C)		Sea Surface Temp (°C)	Baro Pressure (mbar)	Wind Direction	Wind Spd (kts)		Wave Ht (m)	Sea State	Humidity (%)	Prob of Rain (%)	Amount of Rain (mm)
		Max	Min				Gusting	Avg					
11-04-25 (Friday)	0001	32	24	27	1008	SSE	10	6	1.3	4	94	31	0.2
	0600			26	1011	SSE	11	5	1.3	4	87	33	0.2
	1200			29	1009	E	14	7	1.3	4	76	29	0.1
	1800			28	1010	SSE	13	8	1.3	4	85	57	0.5
12-04-25 (Saturday)	0001	33	25	27	1008	SSE	11	6	1.3	4	93	24	0.1
	0600			26	1011	SSW	9	5	1.3	4	95	10	0.0
	1200			29	1009	SE	8	3	1.2	3	74	15	0.0
	1800			28	1010	SSW	12	8	1.2	3	87	11	0.0
13-04-25 (Sunday)	0001	33	25	27	1008	SSW	10	6	1.1	3	93	22	0.0
	0600			26	1011	SW	10	5	1.1	3	95	12	0.0
	1200			29	1009	SE	9	4	1.1	3	74	12	0.0
	1800			28	1010	SW	13	7	1.2	3	87	9	0.0
14-04-25 (Monday)	0001	33	25	27	1008	SSW	10	6	1.1	3	93	22	0.0
	0600			26	1011	SW	10	7	1.1	3	95	12	0.0
	1200			29	1009	SE	9	5	1.1	3	74	12	0.0
	1800			28	1010	SW	13	8	1.2	3	85	10	0.0

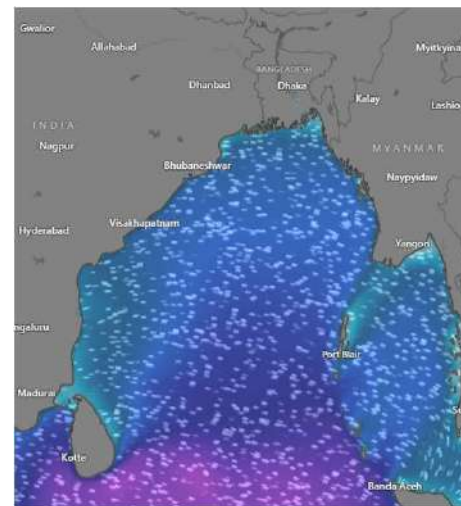
11 April 2025



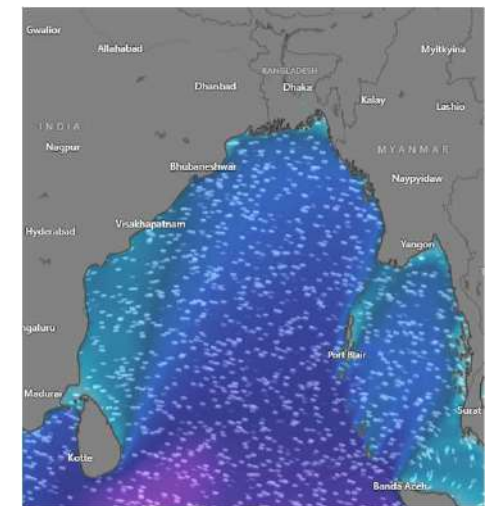
12 April 2025



13 April 2025



14 April 2025



Significant wave height (m)



MARINE WEATHER FORECAST (11 to 18 April 2025)

MONGLA FAIRWAY (21° 26' N, 089° 34' E)



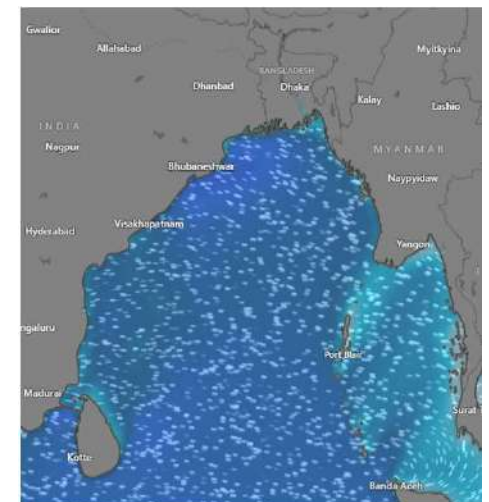
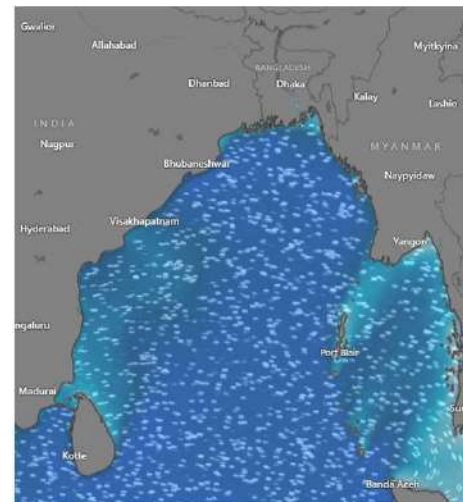
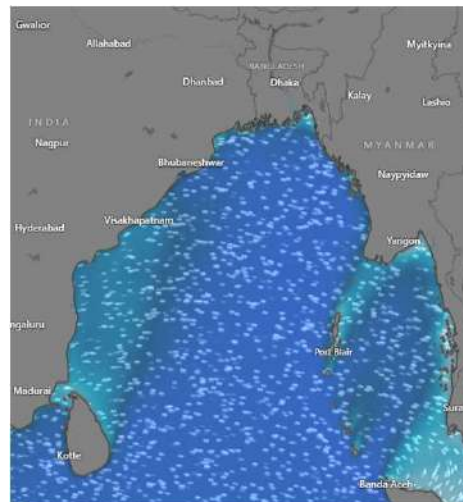
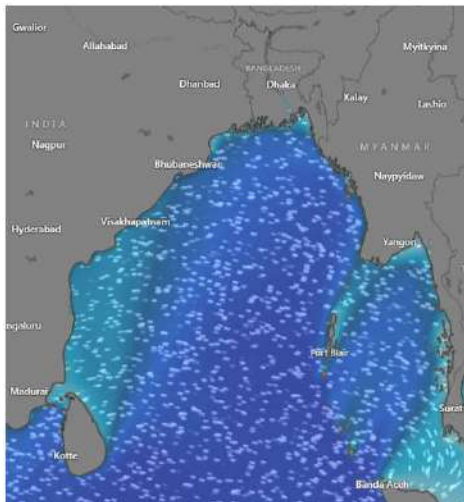
Date	Time	Air Temp (°C)		Sea Surface Temp (°C)	Baro Pressure (mbar)	Wind Direction	Wind Spd (kts)		Wave Ht (m)	Sea State	Humidity (%)	Prob of Rain (%)	Amount of Rain (mm)
		Max	Min				Gusting	Avg					
15-04-25 (Tuesday)	0001	33	25	27	1008	SSW	9	5	1.4	4	92	55	0.5
	0600			26	1011	SW	11	4	1.4	4	91	26	0.1
	1200			29	1009	SW	12	6	1.4	4	77	22	0.0
	1800			28	1010	SW	10	7	1.4	4	89	34	0.2
16-04-25 (Wednesday)	0001	33	25	27	1008	SSW	12	5	1.4	4	94	63	0.6
	0600			26	1011	SW	15	9	1.4	4	92	55	0.5
	1200			29	1009	SW	9	5	1.3	4	85	46	0.5
	1800			28	1010	SW	13	8	1.3	4	83	35	0.2
17-04-25 (Thursday)	0001	33	25	27	1008	SW	15	10	1.3	4	94	64	0.6
	0600			26	1011	SW	14	9	1.2	3	92	55	0.5
	1200			29	1009	SSE	10	5	1.2	3	85	46	0.5
	1800			28	1010	SSW	16	12	1.3	4	83	35	0.2
18-04-25 (Friday)	0001	33	25	27	1008	SSW	14	10	1.2	3	96	64	0.6
	0600			26	1011	SW	13	9	1.2	3	94	55	0.5
	1200			29	1009	SSE	11	7	1.2	3	85	46	0.5
	1800			28	1010	SSW	14	10	1.2	3	85	35	0.2

15 April 2025

16 April 2025

17 April 2025

18 April 2025



Significant wave height (m)



MARINE WEATHER FORECAST (11 to 18 April 2025)

OUTER EEZ (18° 48' N, 090° 30' E)



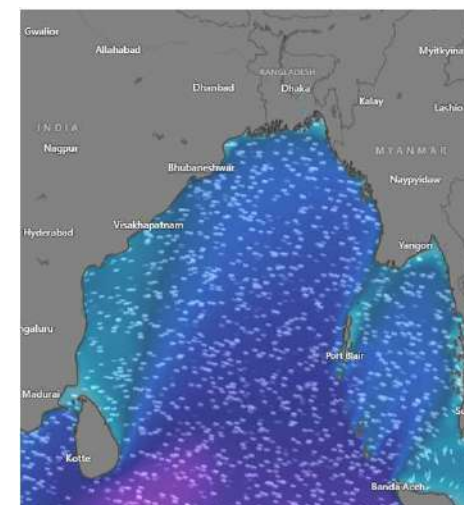
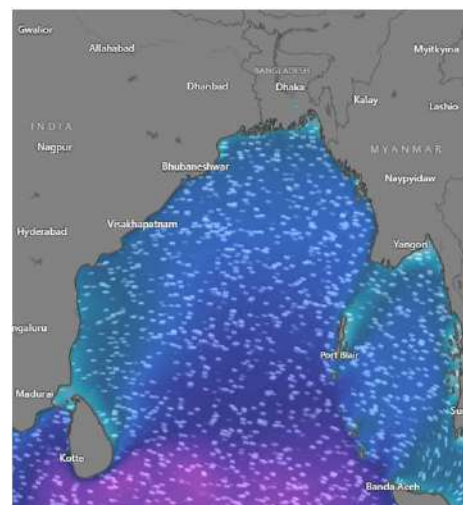
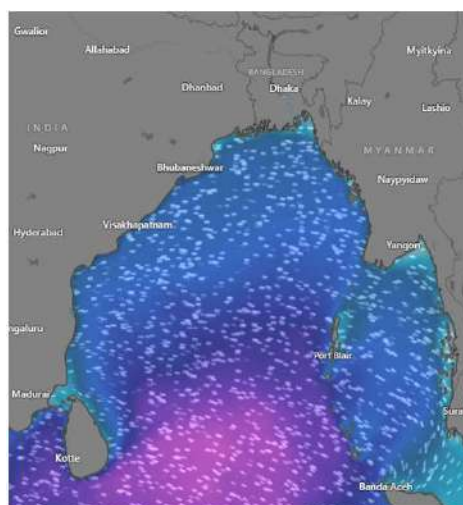
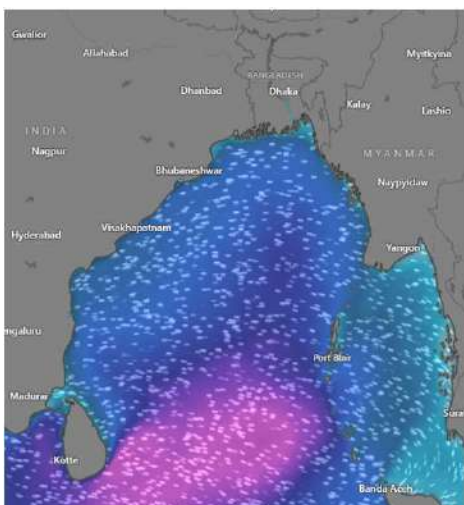
Date	Time	Air Temp (°C)		Sea Surface Temp (°C)	Baro Pressure (mbar)	Wind Direction	Wind Spd (kts)		Wave Ht (m)	Sea State	Humidity (%)	Prob of Rain (%)	Amount of Rain (mm)
		Max	Min				Gusting	Avg					
11-04-25 (Friday)	0001	32	24	27	1007	SSE	17	12	1.6	4	93	51	0.5
	0600			26	1009	S	12	6	1.5	4	90	62	0.6
	1200			30	1006	SSE	13	9	1.5	4	75	37	0.2
	1800			29	1008	S	10	5	1.5	4	86	53	0.5
12-04-25 (Saturday)	0001	32	25	27	1008	NW	8	4	1.5	4	95	24	0.1
	0600			26	1011	NNW	12	8	1.4	4	94	11	0.0
	1200			30	1009	N	11	7	1.3	4	72	10	0.0
	1800			29	1010	NNW	7	3	1.3	4	83	7	0.0
13-04-25 (Sunday)	0001	33	25	27	1008	NNW	9	6	1.3	4	93	9	0.0
	0600			26	1011	N	10	5	1.4	4	92	12	0.0
	1200			30	1009	NNE	11	6	1.4	4	74	10	0.0
	1800			29	1010	SSW	7	3	1.4	4	85	11	0.0
14-04-25 (Monday)	0001	33	25	27	1008	NNW	10	5	1.4	4	92	10	0.0
	0600			26	1011	N	9	4	1.5	4	91	15	0.0
	1200			30	1009	E	10	5	1.5	4	75	12	0.0
	1800			29	1010	E	9	4	1.4	4	86	13	0.0

11 April 2025

12 April 2025

13 April 2025

14 April 2025



Significant wave height (m)



MARINE WEATHER FORECAST (11 to 18 April 2025)

OUTER EEZ (18° 48' N, 090° 30' E)



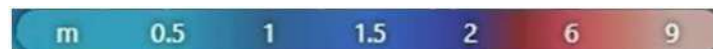
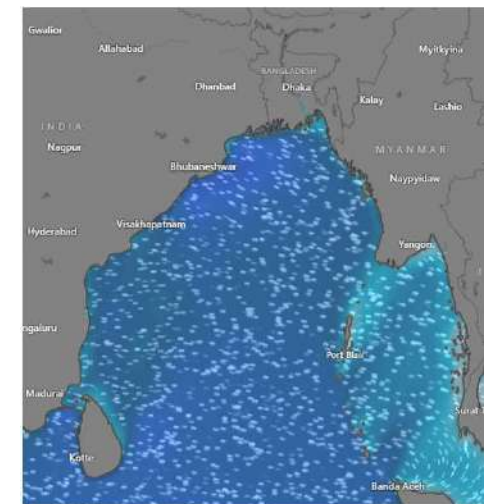
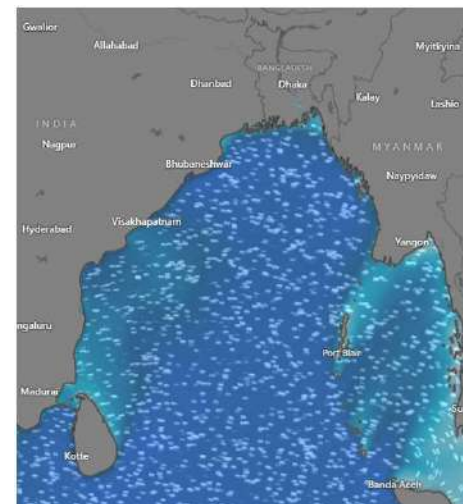
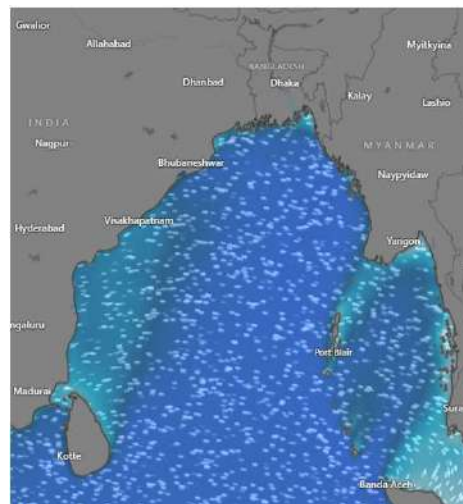
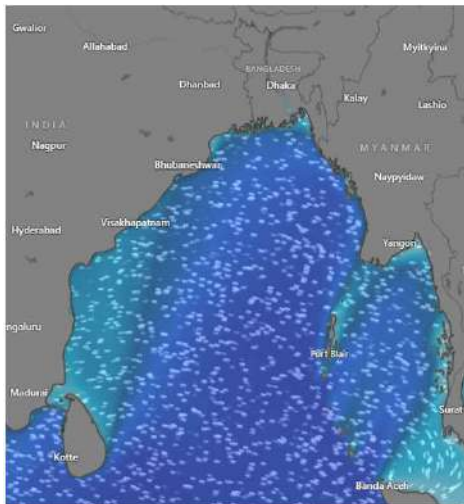
Date	Time	Air Temp (°C)		Sea Surface Temp (°C)	Baro Pressure (mbar)	Wind Direction	Wind Spd (kts)		Wave Ht (m)	Sea State	Humidity (%)	Prob of Rain (%)	Amount of Rain (mm)
		Max	Min				Gusting	Avg					
15-04-25 (Tuesday)	0001	33	25	27	1008	S	8	3	1.5	4	95	54	0.5
	0600			26	1011	S	9	3	1.5	4	94	30	0.2
	1200			30	1009	SSE	10	8	1.5	4	75	29	0.1
	1800			29	1010	SSW	11	5	1.5	4	86	35	0.2
16-04-25 (Wednesday)	0001	33	25	27	1008	SW	12	4	1.4	4	94	68	0.6
	0600			26	1011	SW	13	3	1.5	4	92	55	0.6
	1200			30	1009	SW	14	3	1.5	4	81	54	0.5
	1800			29	1010	SW	10	7	1.3	4	89	35	0.2
17-04-25 (Thursday)	0001	33	25	27	1008	SW	14	7	1.2	3	95	67	0.6
	0600			26	1011	SSW	12	4	1.1	3	93	56	0.6
	1200			30	1009	S	13	3	1.1	3	82	55	0.5
	1800			29	1010	S	12	4	1.1	3	87	37	0.2
18-04-25 (Friday)	0001	33	25	27	1008	SSW	14	5	1.1	3	95	68	0.7
	0600			26	1011	SSW	12	6	1.1	3	93	57	0.6
	1200			30	1009	W	13	4	1.1	3	82	62	0.6
	1800			29	1010	SW	12	9	1.1	3	87	41	0.4

15 April 2025

16 April 2025

17 April 2025

18 April 2025



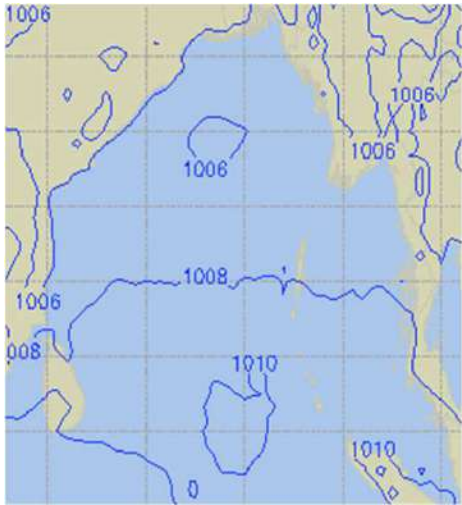
Significant wave height (m)



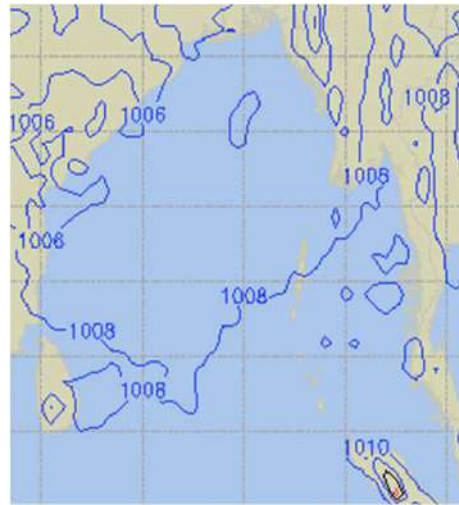
PREDICTED SURFACE PRESSURE FORECAST (11 to 17 April 2025)



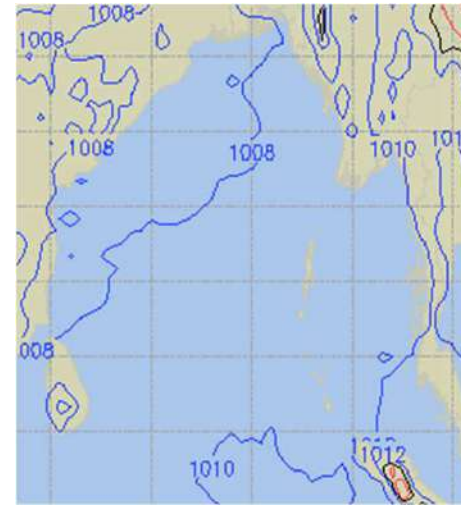
11 April 2025



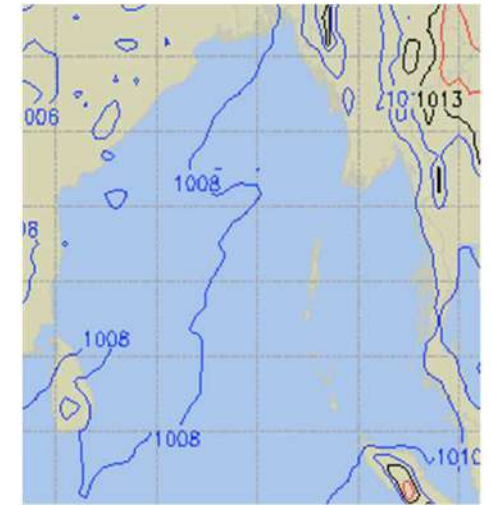
12 April 2025



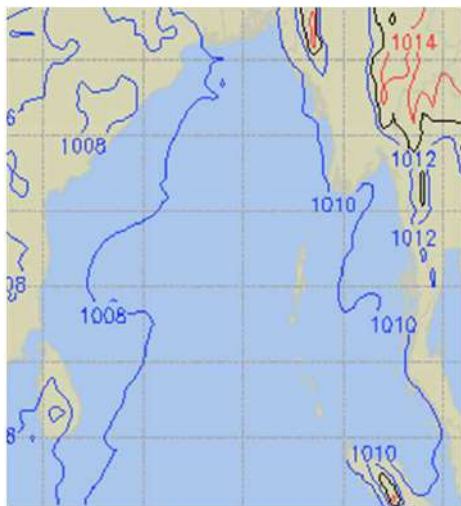
13 April 2025



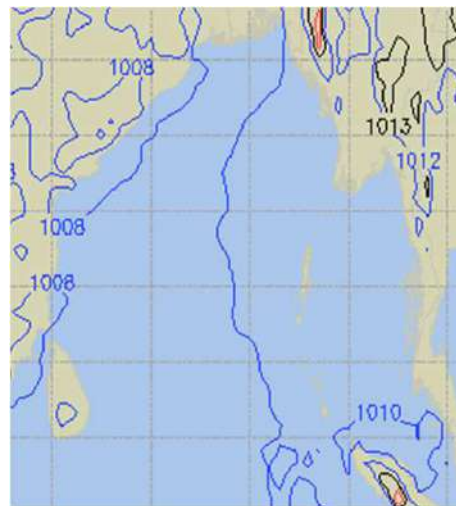
14 April 2025



15 April 2025



16 April 2025



17 April 2025

