



SUMMARY OF MARINE WEATHER FORECAST
COASTAL AREA OF BANGLADESH
DATE: 11 to 18 Mar 2025



Fleet forecast	Seasonal low lies over the South Bay.
Wind direction, speed	North/North-westerly 9 kts, (Temporary gusting up to 18 kts).
Wave height & sea state	Wave height: 0.1 to 1.2 m (Sea state:1 to 3).
Sea surface temperature	23°C - 28°C (May remain nearly unchanged).
Baro pressure	1008-1015 mb.
Rainfall	Partly cloudy sky over Bay of Bengal & adjoining area.
Fog	Light fog may occur over the coastal area during late night to early morning.

Outlook for 11 to 18 Mar 2025: Weather may remain dry with partly cloudy sky. Night and day temperature may rise.



MARINE WEATHER FORECAST (11 to 18 Mar 2025)

PATENGA POINT (22° 12' N, 091° 38' E)

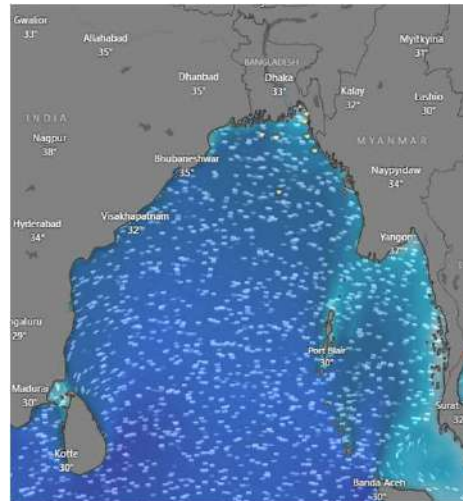


Date	Time	Air Temp (°C)		Sea Surface Temp (°C)	Baro Pressure (mbar)	Wind Direction	Wind Spd (kts)		Wave Ht (m)	Sea State	Humidity (%)	Prob of Rain (%)	Amount of Rain (mm)
		Max	Min				Gusting	Avg					
11-03-25 (Tuesday)	0001	32	21	24	1010	NNE	9	6	0.2	2	64	7	0.0
	0600			23	1015	NE	8	4	0.2	2	72	9	0.0
	1200			27	1011	W	13	19	0.2	2	41	3	0.0
	1800			25	1012	W	16	9	0.3	2	63	5	0.0
12-03-25 (Wednesday)	0001	31	21	24	1009	W	13	7	0.3	2	82	8	0.0
	0600			23	1012	E	7	3	0.2	2	87	9	0.0
	1200			27	1010	SSW	12	8	0.2	2	62	2	0.0
	1800			25	1011	SSW	15	8	0.3	2	86	5	0.0
13-03-25 (Thursday)	0001	31	22	24	1009	SSE	10	7	0.4	2	95	6	0.0
	0600			23	1012	SSE	12	8	0.4	2	99	8	0.0
	1200			27	1010	SSW	17	13	0.4	2	73	2	0.0
	1800			25	1011	SSW	18	12	0.4	2	91	7	0.0
14-03-25 (Friday)	0001	31	22	24	1009	S	16	12	0.5	2	93	5	0.0
	0600			23	1012	SSE	16	10	0.5	2	97	8	0.0
	1200			27	1010	SSW	18	12	0.5	2	74	2	0.0
	1800			25	1011	SSW	18	10	0.5	2	92	6	0.0

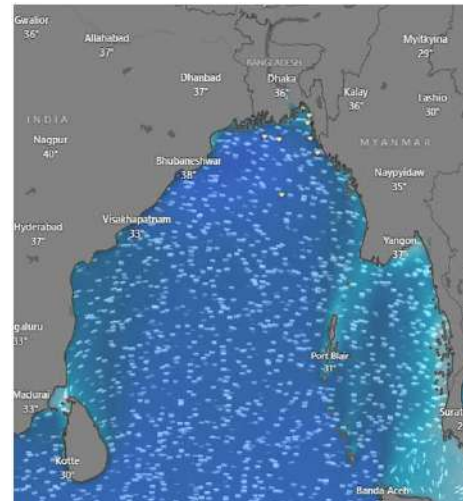
11 Mar 2025



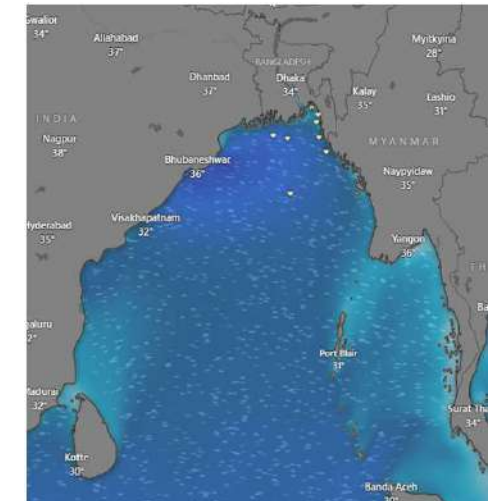
12 Mar 2025



13 Mar 2025



14 Mar 2025



Significant wave height (m)



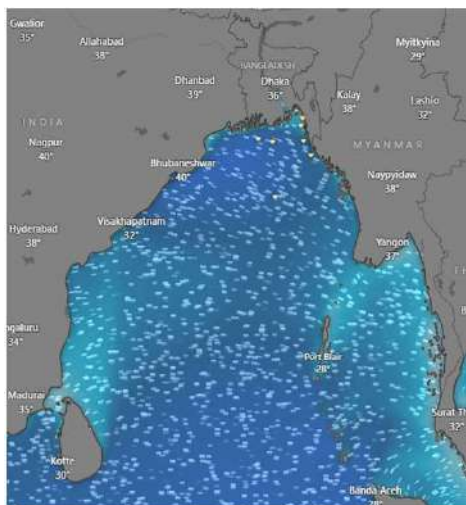
MARINE WEATHER FORECAST (11 to 18 Mar 2025)

PATENGA POINT (22° 12' N, 091° 38' E)

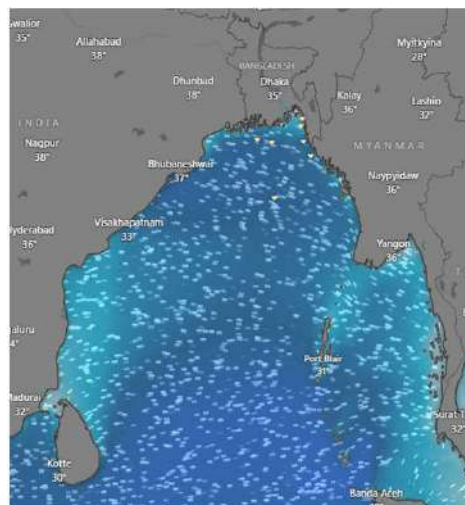


Date	Time	Air Temp (°C)		Sea Surface Temp (°C)	Baro Pressure (mbar)	Wind Direction	Wind Spd (kts)		Wave Ht (m)	Sea State	Humidity (%)	Prob of Rain (%)	Amount of Rain (mm)
		Max	Min				Gusting	Avg					
15-03-25 (Saturday)	0001	31	22	25	1008	S	15	11	0.5	2	98	8	0.0
	0600			24	1012	SSE	17	10	0.5	2	99	9	0.0
	1200			27	1009	SSW	17	10	0.5	2	75	3	0.0
	1800			25	1011	SSW	14	8	0.4	2	92	6	0.0
16-03-25 (Sunday)	0001	31	22	25	1008	SSW	13	10	0.3	2	99	7	0.0
	0600			24	1012	SSE	10	6	0.2	2	98	9	0.0
	1200			27	1009	SSW	12	6	0.2	2	74	3	0.0
	1800			25	1011	SSW	13	9	0.3	2	92	6	0.0
17-03-25 (Monday)	0001	31	22	25	1008	SSW	11	7	0.2	2	99	7	0.0
	0600			24	1012	SSE	10	4	0.2	2	95	9	0.0
	1200			27	1009	SSW	11	7	0.2	2	74	3	0.0
	1800			25	1011	SSW	15	8	0.3	2	92	6	0.0
18-03-25 (Tuesday)	0001	31	22	25	1008	S	11	7	0.3	2	98	5	0.0
	0600			24	1012	SSE	12	9	0.3	2	94	8	0.0
	1200			27	1009	SSW	15	10	0.3	2	73	2	0.0
	1800			25	1011	SSW	12	9	0.3	2	91	7	0.0

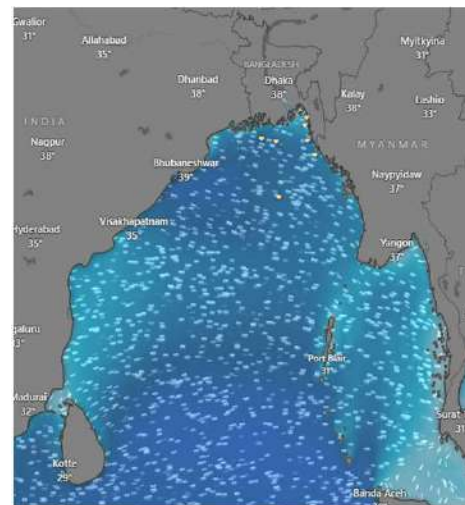
15 Mar 2025



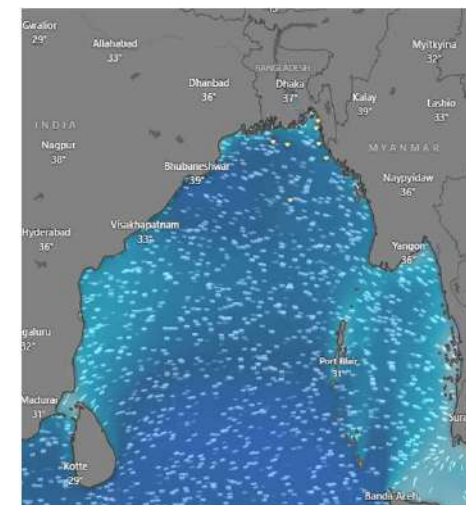
16 Mar 2025



17 Mar 2025



18 Mar 2025



Significant wave height (m)



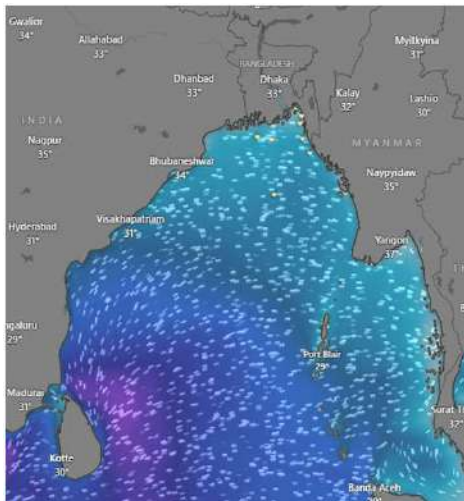
MARINE WEATHER FORECAST (11 to 18 Mar 2025)

ABEAM TO KUTUBDIA (21° 51' N, 091° 40' E)

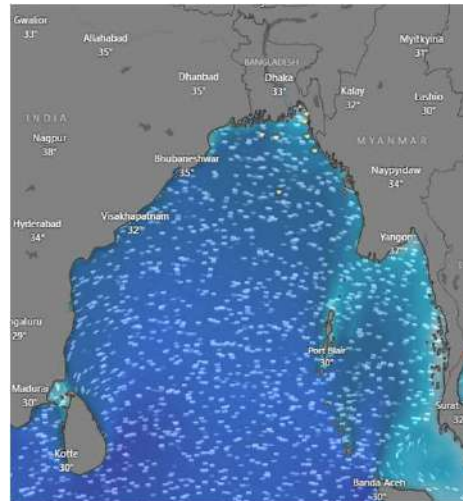


Date	Time	Air Temp (°C)		Sea Surface Temp (°C)	Baro Pressure (mbar)	Wind Direction	Wind Spd (kts)		Wave Ht (m)	Sea State	Humidity (%)	Prob of Rain (%)	Amount of Rain (mm)
		Max	Min				Gusting	Avg					
11-03-25 (Tuesday)	0001	32	21	24	1010	NNE	11	8	0.3	2	66	7	0.0
	0600			23	1015	NNE	9	5	0.2	2	73	9	0.0
	1200			27	1011	NNW	12	10	0.2	2	45	5	0.0
	1800			25	1013	W	14	10	0.3	2	62	6	0.0
12-03-25 (Wednesday)	0001	31	21	24	1010	W	14	10	0.4	2	84	7	0.0
	0600			23	1014	E	8	4	0.3	2	88	9	0.0
	1200			27	1010	SSW	10	7	0.3	2	61	3	0.0
	1800			25	1013	SSW	13	9	0.4	2	85	5	0.0
13-03-25 (Thursday)	0001	31	21	24	1010	S	12	9	0.4	2	94	8	0.0
	0600			23	1014	SSE	13	10	0.4	2	97	9	0.0
	1200			27	1010	SSW	16	12	0.5	2	72	3	0.0
	1800			25	1012	SSW	17	14	0.5	2	93	7	0.0
14-03-25 (Friday)	0001	31	21	24	1010	S	18	13	0.5	2	95	6	0.0
	0600			23	1014	S	19	13	0.5	2	98	8	0.0
	1200			27	1010	SSW	18	12	0.5	2	74	2	0.0
	1800			25	1012	SSW	16	10	0.5	2	92	5	0.0

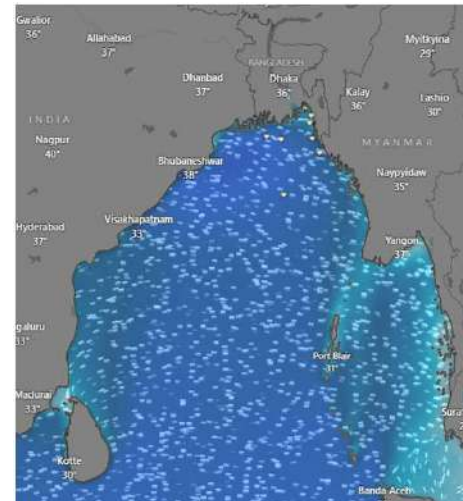
11 Mar 2025



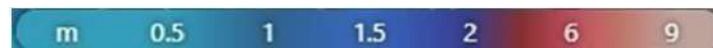
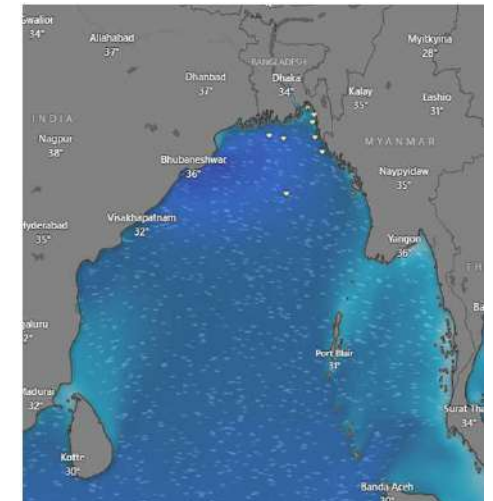
12 Mar 2025



13 Mar 2025



14 Mar 2025



Significant wave height (m)



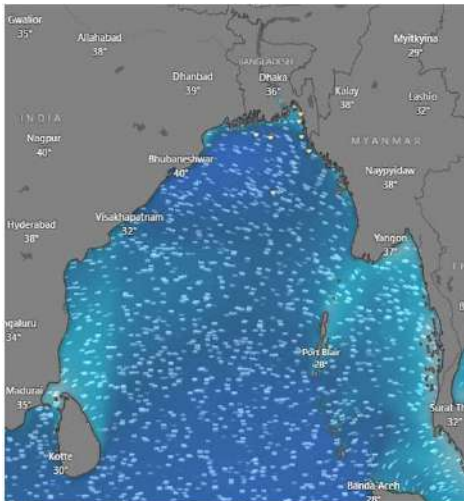
MARINE WEATHER FORECAST (11 to 18 Mar 2025)

ABEAM TO KUTUBDIA (21° 51' N, 091° 40' E)

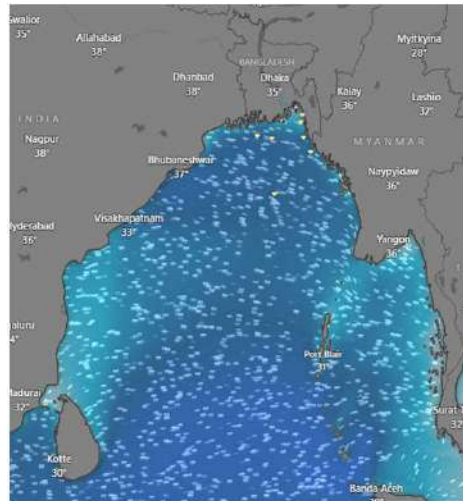


Date	Time	Air Temp (°C)		Sea Surface Temp (°C)	Baro Pressure (mbar)	Wind Direction	Wind Spd (kts)		Wave Ht (m)	Sea State	Humidity (%)	Prob of Rain (%)	Amount of Rain (mm)
		Max	Min				Gusting	Avg					
15-03-25 (Saturday)	0001	31	21	24	1009	SSW	16	12	0.5	2	99	7	0.0
	0600			23	1012	SE	18	14	0.5	2	97	8	0.0
	1200			27	1010	SSW	14	9	0.4	2	75	3	0.0
	1800			25	1011	SSW	11	8	0.4	2	91	5	0.0
16-03-25 (Sunday)	0001	31	22	24	1009	SSW	13	11	0.4	2	99	8	0.0
	0600			23	1012	S	11	5	0.4	2	98	9	0.0
	1200			27	1010	S	9	5	0.3	2	76	3	0.0
	1800			25	1011	SSW	11	10	0.4	2	93	7	0.0
17-03-25 (Monday)	0001	31	22	24	1009	SSW	12	7	0.4	2	99	8	0.0
	0600			23	1012	SSE	10	6	0.3	2	96	9	0.0
	1200			27	1010	S	9	7	0.3	2	76	4	0.0
	1800			25	1011	SSW	12	10	0.4	2	93	6	0.0
18-03-25 (Tuesday)	0001	31	22	24	1009	S	12	7	0.4	2	99	8	0.0
	0600			23	1012	SSE	13	10	0.4	2	97	9	0.0
	1200			27	1010	S	14	11	0.4	2	75	3	0.0
	1800			25	1011	SSW	14	10	0.4	2	94	7	0.0

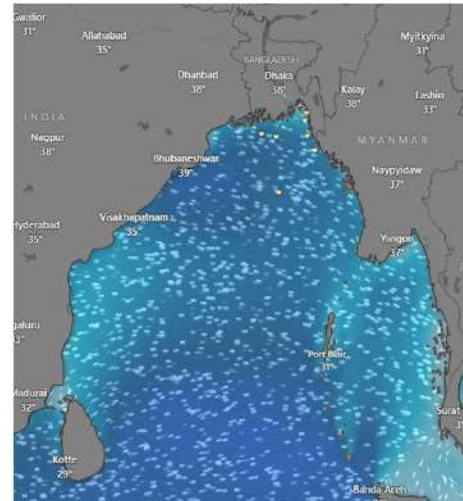
15 Mar 2025



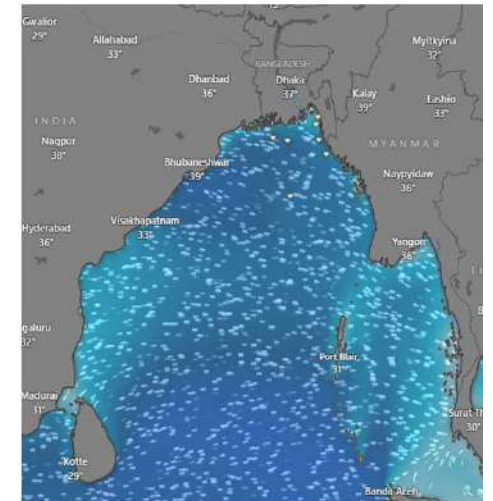
16 Mar 2025



17 Mar 2025



18 Mar 2025



Significant wave height (m)



MARINE WEATHER FORECAST (11 to 18 Mar 2025) ABEAM TO ELEPHANT POINT (21° 11' N, 091° 52' E)

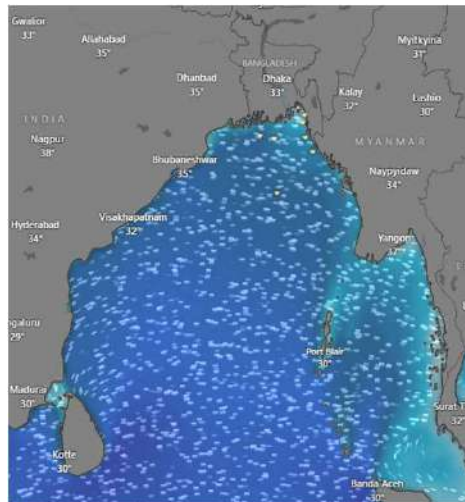


Date	Time	Air Temp (°C)		Sea Surface Temp (°C)	Baro Pressure (mbar)	Wind Direction	Wind Spd (kts)		Wave Ht (m)	Sea State	Humidity (%)	Prob of Rain (%)	Amount of Rain (mm)
		Max	Min				Gusting	Avg					
11-03-25 (Tuesday)	0001	32	21	24	1010	N	12	9	0.5	2	67	6	0.0
	0600			23	1014	NNW	11	7	0.5	2	75	8	0.0
	1200			27	1011	NW	11	9	0.5	2	45	3	0.0
	1800			25	1012	NW	15	13	0.6	3	76	7	0.0
12-03-25 (Wednesday)	0001	31	22	24	1010	NW	16	11	0.7	3	93	8	0.0
	0600			23	1013	NE	8	4	0.6	3	90	9	0.0
	1200			27	1010	SSW	6	5	0.6	3	62	4	0.0
	1800			25	1012	SW	11	9	0.7	3	86	5	0.0
13-03-25 (Thursday)	0001	31	22	24	1009	SSW	10	5	0.7	3	99	7	0.0
	0600			23	1013	SSE	10	8	0.7	3	97	9	0.0
	1200			27	1010	SSW	12	8	0.8	3	73	2	0.0
	1800			25	1012	SSW	11	9	0.9	3	94	7	0.0
14-03-25 (Friday)	0001	31	22	24	1009	S	13	9	1.0	3	98	6	0.0
	0600			23	1013	SSE	15	11	1.0	3	97	8	0.0
	1200			27	1010	SSW	13	10	1.0	3	75	2	0.0
	1800			25	1012	SSW	11	8	1.0	3	93	5	0.0

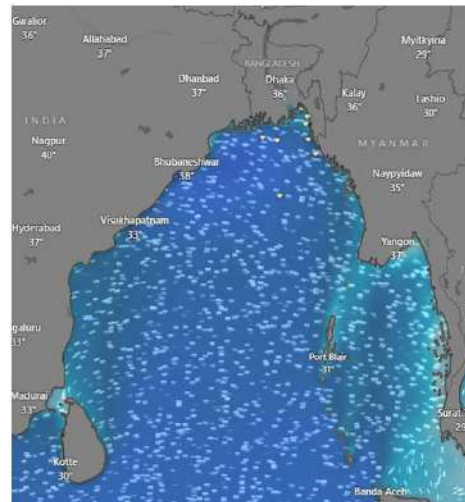
11 Mar 2025



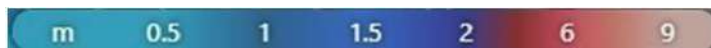
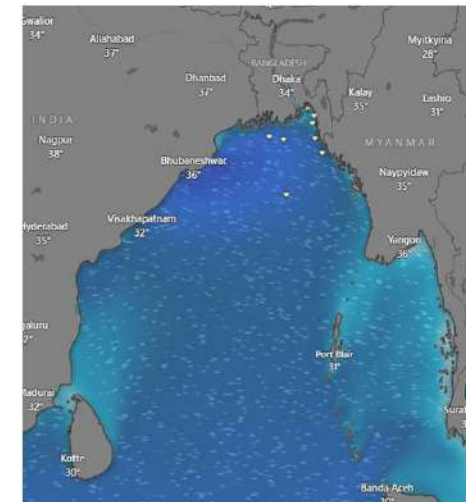
12 Mar 2025



13 Mar 2025



14 Mar 2025



Significant wave height (m)

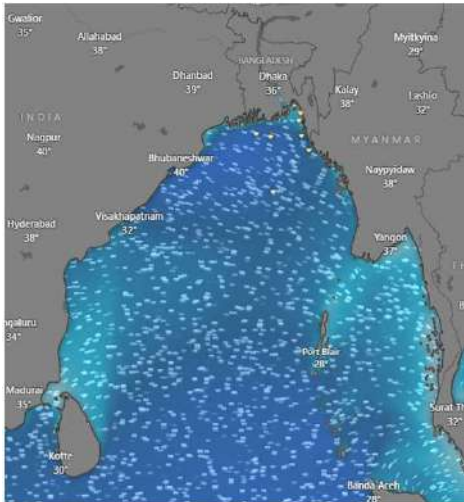


MARINE WEATHER FORECAST (11 to 18 Mar 2025) ABEAM TO ELEPHANT POINT (21° 11' N, 091° 52' E)

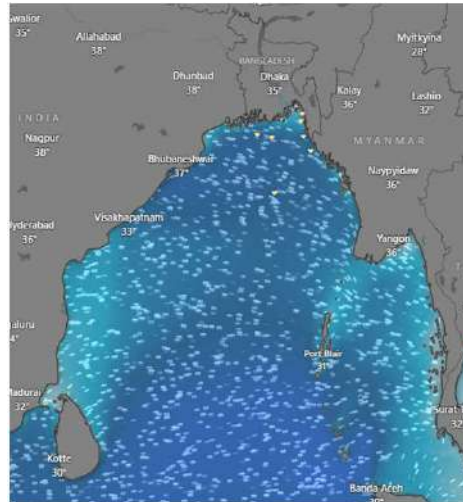


Date	Time	Air Temp (°C)		Sea Surface Temp (°C)	Baro Pressure (mbar)	Wind Direction	Wind Spd (kts)		Wave Ht (m)	Sea State	Humidity (%)	Prob of Rain (%)	Amount of Rain (mm)
		Max	Min				Gusting	Avg					
15-03-25 (Saturday)	0001	31	22	24	1008	S	14	11	1.1	3	98	6	0.0
	0600			23	1012	S	14	11	1.0	3	96	8	0.0
	1200			27	1009	S	11	7	1.0	3	75	2	0.0
	1800			25	1011	SSW	9	7	1.0	3	93	5	0.0
16-03-25 (Sunday)	0001	31	22	24	1008	SW	11	8	1.0	3	99	8	0.0
	0600			23	1012	SSE	7	4	0.9	3	99	9	0.0
	1200			27	1009	S	5	3	0.9	3	76	5	0.0
	1800			25	1011	SW	11	9	0.9	3	96	6	0.0
17-03-25 (Monday)	0001	31	22	24	1008	SW	13	6	0.8	3	99	8	0.0
	0600			23	1012	E	8	4	0.7	3	98	9	0.0
	1200			27	1009	S	8	3	0.7	3	76	3	0.0
	1800			25	1011	SW	9	7	0.7	3	96	7	0.0
18-03-25 (Tuesday)	0001	31	22	24	1008	SSW	9	4	0.7	3	98	7	0.0
	0600			23	1012	SSE	9	6	0.8	3	96	9	0.0
	1200			27	1009	SSW	12	9	0.8	3	74	3	0.0
	1800			25	1011	SSW	11	8	0.8	3	93	6	0.0

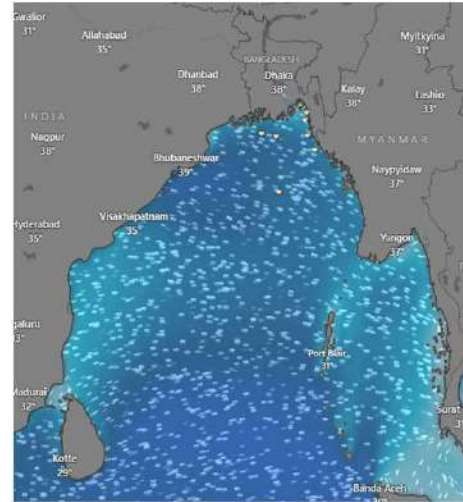
15 Mar 2025



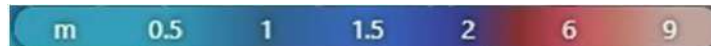
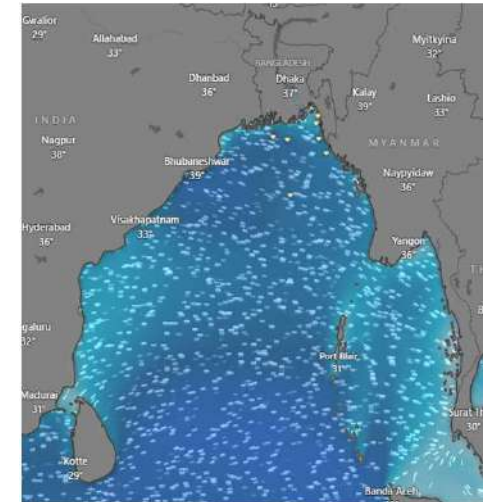
16 Mar 2025



17 Mar 2025



18 Mar 2025



Significant wave height (m)



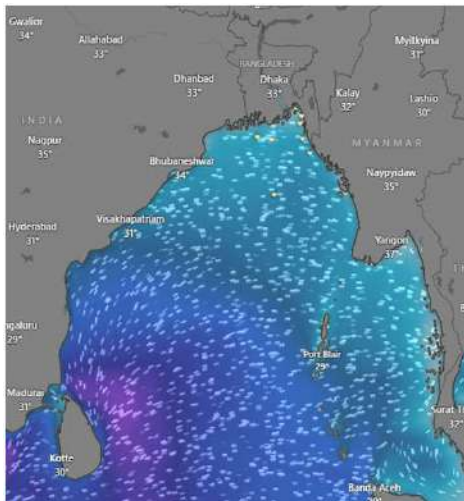
MARINE WEATHER FORECAST (11 to 18 Mar 2025)

ABEAM TO ST. MARTIN'S LIGHT HOUSE (20° 37' N, 092° 08' E)

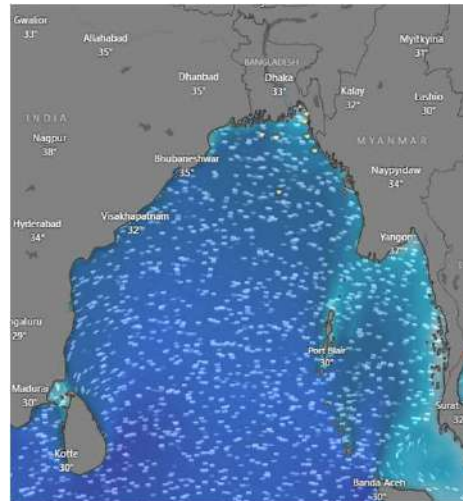


Date	Time	AirTemp (°C)		Sea Surface Temp (°C)	Baro Pressure (mbar)	Wind Direction	Wind Spd (kts)		Wave Ht (m)	Sea State	Humidity (%)	Prob of Rain (%)	Amount of Rain (mm)
		Max	Min				Gusting	Avg					
11-03-25 (Tuesday)	0001	32	21	25	1009	N	14	10	0.6	3	67	6	0.0
	0600			24	1014	NNW	12	9	0.5	2	72	8	0.0
	1200			28	1011	NW	11	8	0.5	2	45	2	0.0
	1800			26	1012	NW	17	13	0.9	3	74	7	0.0
12-03-25 (Wednesday)	0001	31	22	25	1009	NW	15	10	0.9	3	87	6	0.0
	0600			24	1014	NNE	8	3	0.7	3	89	9	0.0
	1200			28	1011	NW	8	6	0.7	3	61	3	0.0
	1800			26	1012	W	12	10	0.8	3	86	7	0.0
13-03-25 (Thursday)	0001	31	22	25	1009	W	10	5	0.9	3	97	5	0.0
	0600			24	1014	SSE	6	4	0.7	3	99	8	0.0
	1200			28	1011	SSW	8	6	1.0	3	76	2	0.0
	1800			26	1012	SSW	10	8	1.0	3	95	6	0.0
14-03-25 (Friday)	0001	30	22	25	1009	SSW	9	6	0.8	3	98	7	0.0
	0600			24	1014	SSE	11	8	0.8	3	99	8	0.0
	1200			28	1011	SSW	11	8	0.9	3	75	2	0.0
	1800			26	1012	SW	10	7	0.9	3	94	5	0.0

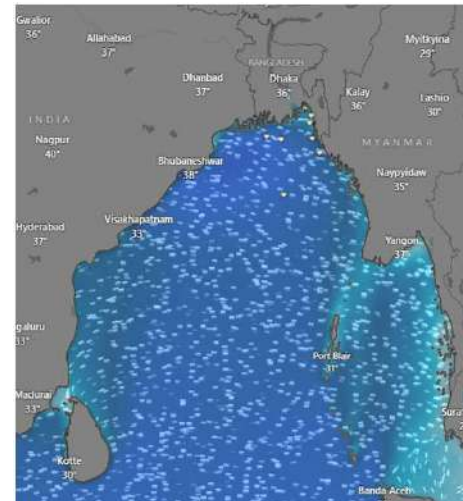
11 Mar 2025



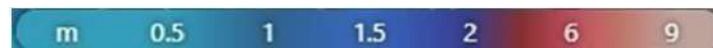
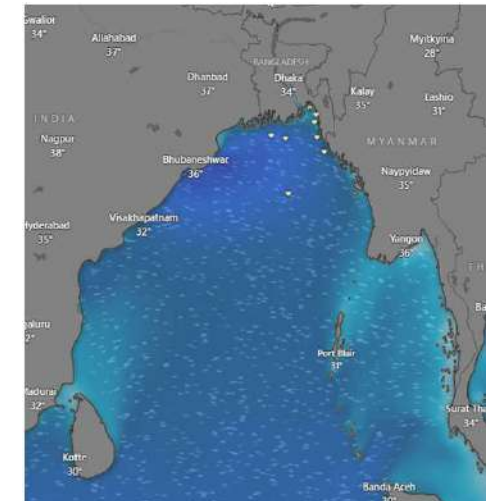
12 Mar 2025



13 Mar 2025



14 Mar 2025



Significant wave height (m)



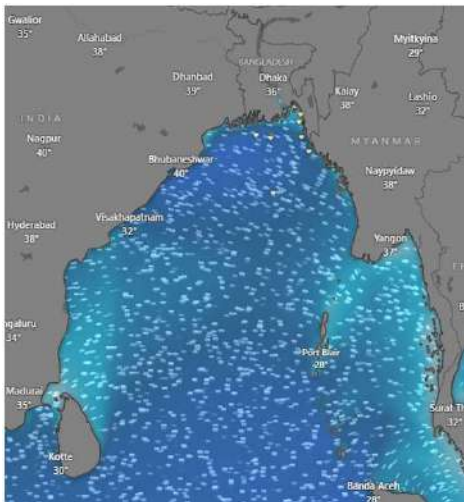
MARINE WEATHER FORECAST (11 to 18 Mar 2025)

ABEAM TO ST. MARTIN'S LIGHT HOUSE (20° 37' N, 092° 08' E)

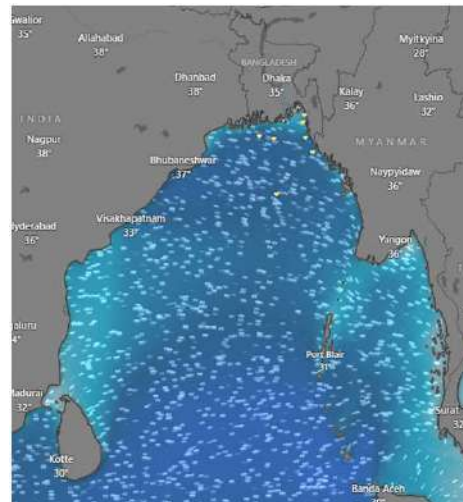


Date	Time	Air Temp (°C)		Sea Surface Temp (°C)	Baro Pressure (mbar)	Wind Direction	Wind Spd (kts)		Wave Ht (m)	Sea State	Humidity (%)	Prob of Rain (%)	Amount of Rain (mm)
		Max	Min				Gusting	Avg					
15-03-25 (Saturday)	0001	31	22	25	1009	SSW	11	9	1.1	3	99	8	0.0
	0600			24	1014	S	10	8	1.1	3	97	9	0.0
	1200			28	1010	SSW	7	4	1.0	3	93	2	0.0
	1800			26	1012	SW	8	6	1.0	3	91	7	0.0
16-03-25 (Sunday)	0001	31	22	25	1009	W	11	8	0.9	3	98	8	0.0
	0600			24	1014	S	7	4	0.9	3	99	9	0.0
	1200			28	1010	SW	8	5	0.9	3	78	5	0.0
	1800			26	1012	W	15	12	1.1	3	94	7	0.0
17-03-25 (Monday)	0001	30	22	25	1009	NW	15	7	1.0	3	98	6	0.0
	0600			24	1014	NNE	10	5	0.9	3	99	8	0.0
	1200			28	1010	NW	12	8	0.9	3	79	3	0.0
	1800			26	1012	W	11	9	0.9	3	95	6	0.0
18-03-25 (Tuesday)	0001	30	22	25	1009	W	10	5	0.8	3	96	6	0.0
	0600			24	1014	SE	7	3	0.8	3	98	8	0.0
	1200			28	1010	SSW	11	9	0.9	3	74	3	0.0
	1800			26	1012	SW	11	9	0.9	3	92	5	0.0

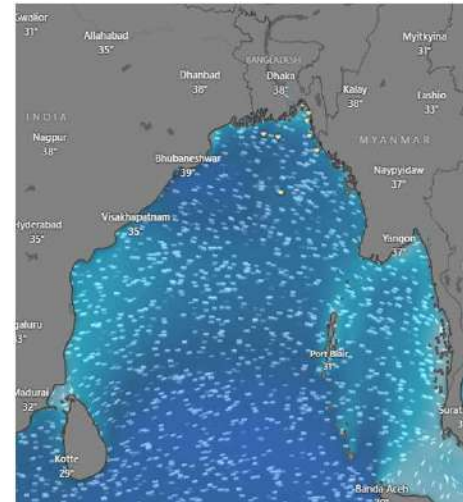
15 Mar 2025



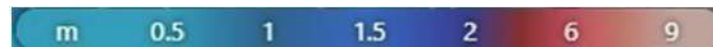
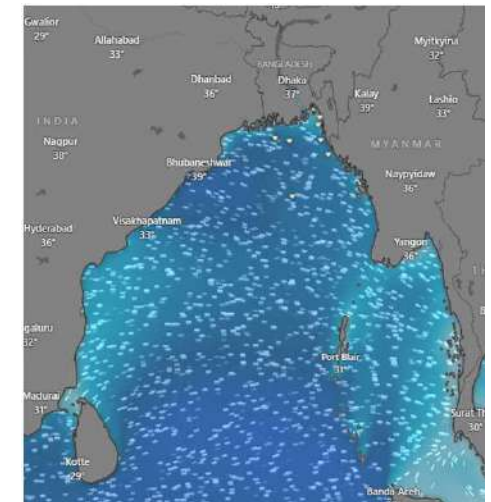
16 Mar 2025



17 Mar 2025



18 Mar 2025



Significant wave height (m)



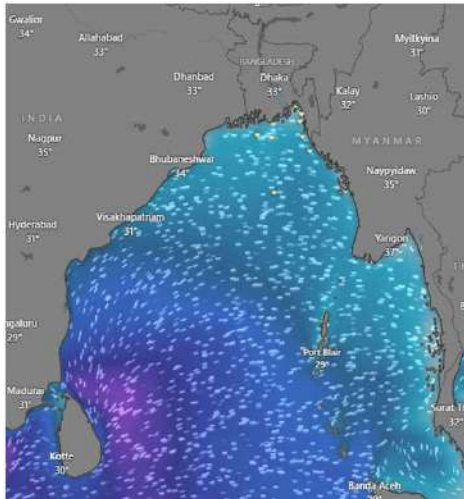
MARINE WEATHER FORECAST (11 to 18 Mar 2025)

PAYRA FAIRWAY (21° 22' N, 090° 6' E)

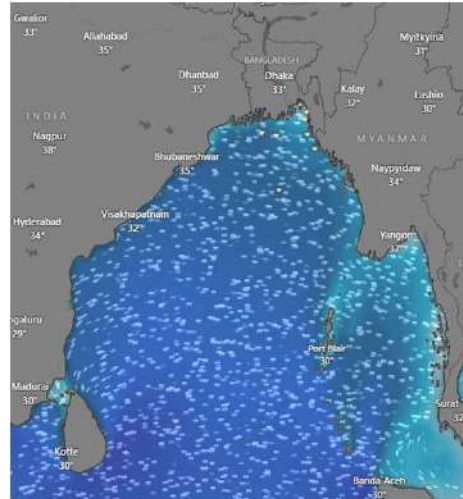


Date	Time	Air Temp (°C)		Sea Surface Temp (°C)	Baro Pressure (mbar)	Wind Direction	Wind Spd (kts)		Wave Ht (m)	Sea State	Humidity (%)	Prob of Rain (%)	Amount of Rain (mm)
		Max	Min				Gusting	Avg					
11-03-25 (Tuesday)	0001	32	22	25	1010	NW	12	9	0.5	2	84	5	0.0
	0600			24	1014	NW	11	6	0.5	2	90	8	0.0
	1200			27	1011	N	9	5	0.5	2	52	2	0.0
	1800			26	1013	SW	13	10	0.5	2	68	4	0.0
12-03-25 (Wednesday)	0001	31	22	25	1010	SW	12	7	0.6	3	87	7	0.0
	0600			24	1014	SW	11	8	0.7	3	90	9	0.0
	1200			27	1011	W	14	11	0.8	3	63	5	0.0
	1800			26	1012	SSW	16	13	1.0	3	84	6	0.0
13-03-25 (Thursday)	0001	31	22	25	1009	SSW	16	12	1.2	3	92	7	0.0
	0600			24	1013	SW	16	13	1.2	3	94	8	0.0
	1200			27	1010	SW	17	13	1.2	3	73	3	0.0
	1800			26	1012	SSW	16	12	1.2	3	91	5	0.0
14-03-25 (Friday)	0001	31	22	25	1009	SSW	18	14	1.2	3	93	6	0.0
	0600			24	1013	SW	16	12	1.2	3	95	8	0.0
	1200			27	1010	SSW	15	11	1.2	3	72	2	0.0
	1800			26	1012	SSW	15	12	1.2	3	93	6	0.0

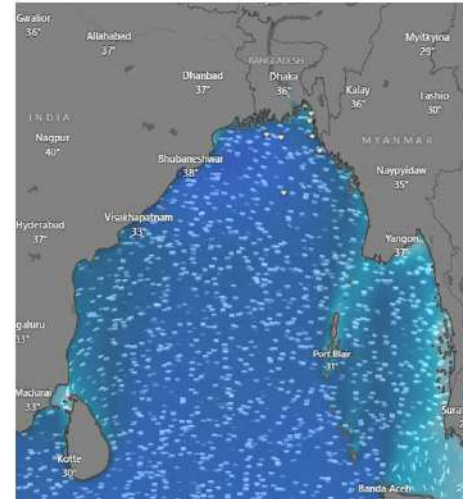
11 Mar 2025



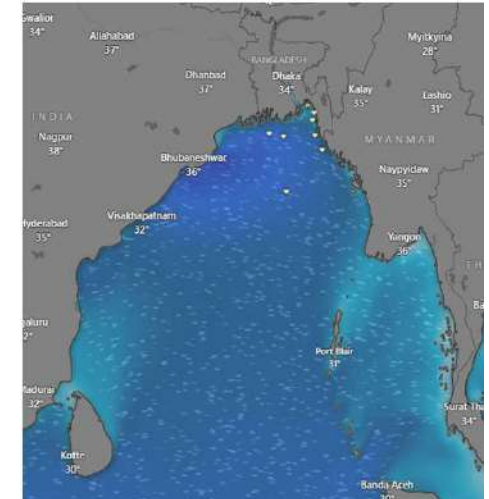
12 Mar 2025



13 Mar 2025



14 Mar 2025



Significant wave height (m)



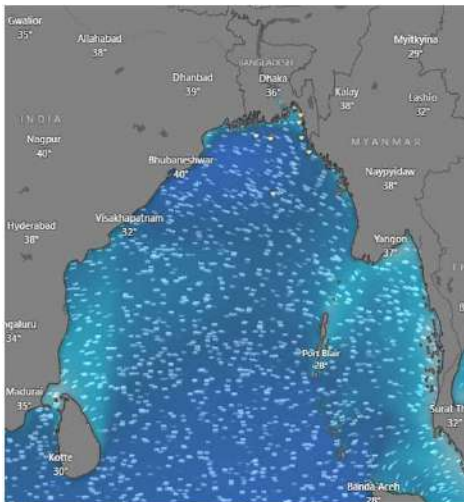
MARINE WEATHER FORECAST (11 to 18 Mar 2025)

PAYRA FAIRWAY (21° 22' N, 090° 6' E)

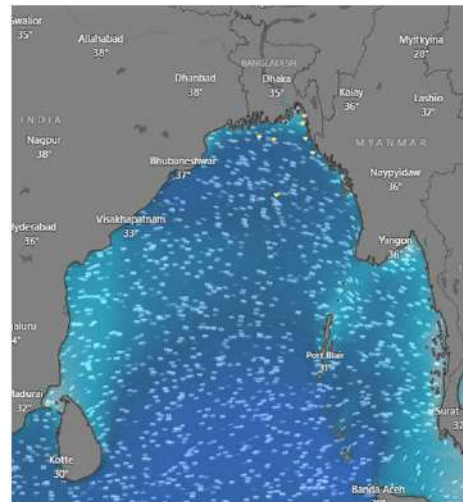


Date	Time	Air Temp (°C)		Sea Surface Temp (°C)	Baro Pressure (mbar)	Wind Direction	Wind Spd (kts)		Wave Ht (m)	Sea State	Humidity (%)	Prob of Rain (%)	Amount of Rain (mm)
		Max	Min				Gusting	Avg					
15-03-25 (Saturday)	0001	31	22	25	1008	S	18	15	1.2	3	95	7	0.0
	0600			24	1011	SW	18	14	1.2	3	96	8	0.0
	1200			27	1009	SSW	17	8	1.1	3	76	2	0.0
	1800			26	1010	SSW	14	11	1.2	3	92	6	0.0
16-03-25 (Sunday)	0001	31	23	25	1008	SW	17	13	1.2	3	97	8	0.0
	0600			24	1011	W	17	13	1.1	3	99	9	0.0
	1200			27	1009	SSW	9	6	1.0	3	77	3	0.0
	1800			26	1010	SSW	16	12	1.1	3	91	6	0.0
17-03-25 (Monday)	0001	31	23	25	1008	SW	16	9	1.0	3	96	7	0.0
	0600			24	1011	SW	15	10	1.0	3	98	9	0.0
	1200			27	1009	SSW	13	5	0.9	3	73	2	0.0
	1800			26	1010	SSW	14	11	1.0	3	87	5	0.0
18-03-25 (Tuesday)	0001	31	23	26	1008	SW	16	12	1.0	3	97	8	0.0
	0600			25	1011	SW	15	10	1.0	3	99	9	0.0
	1200			28	1009	SSW	13	10	0.9	3	74	2	0.0
	1800			27	1010	SSW	16	11	1.0	3	86	5	0.0

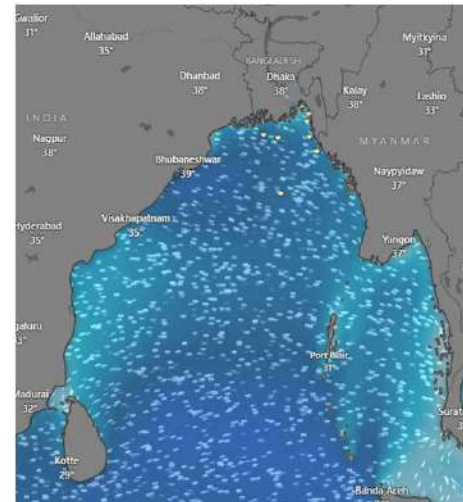
15 Mar 2025



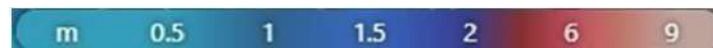
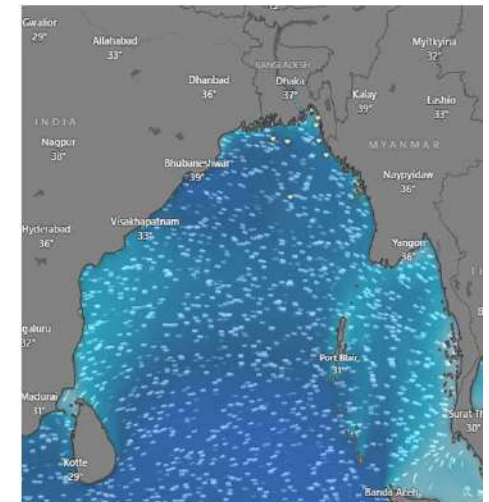
16 Mar 2025



17 Mar 2025



18 Mar 2025



Significant wave height (m)



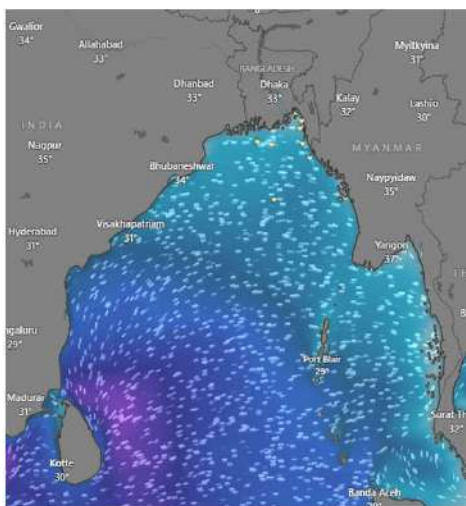
MARINE WEATHER FORECAST (11 to 18 Mar 2025)

MONGLA FAIRWAY (21° 26' N, 089° 34' E)

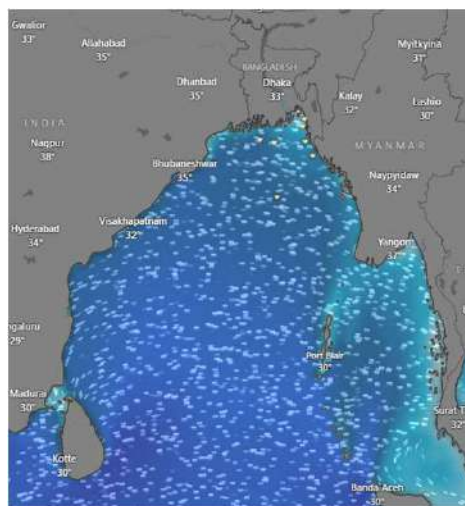


Date	Time	Air Temp (°C)		Sea Surface Temp (°C)	Baro Pressure (mbar)	Wind Direction	Wind Spd (kts)		Wave Ht (m)	Sea State	Humidity (%)	Prob of Rain (%)	Amount of Rain (mm)
		Max	Min				Gusting	Avg					
11-03-25 (Tuesday)	0001	31	21	25	1010	SW	8	5	0.5	2	88	7	0.0
	0600			24	1015	W	9	6	0.5	2	90	9	0.0
	1200			27	1011	W	8	5	0.5	2	45	3	0.0
	1800			26	1013	SW	16	12	0.6	3	64	5	0.0
12-03-25 (Wednesday)	0001	31	21	25	1010	SW	14	10	0.7	3	91	8	0.0
	0600			24	1014	SW	14	11	0.7	3	96	9	0.0
	1200			27	1011	SW	16	13	1.0	3	55	4	0.0
	1800			26	1012	SSW	17	13	1.0	3	68	6	0.0
13-03-25 (Thursday)	0001	31	21	25	1010	SW	18	14	0.2	3	90	8	0.0
	0600			24	1014	SW	18	15	0.2	3	96	9	0.0
	1200			27	1011	SW	18	14	1.2	3	54	4	0.0
	1800			26	1012	SSW	17	13	1.2	3	65	6	0.0
14-03-25 (Friday)	0001	30	21	25	1010	SSW	18	16	0.2	3	92	7	0.0
	0600			24	1014	SW	18	15	0.2	3	97	8	0.0
	1200			27	1011	SW	17	12	1.2	3	55	3	0.0
	1800			26	1012	SSW	15	12	1.2	3	66	6	0.0

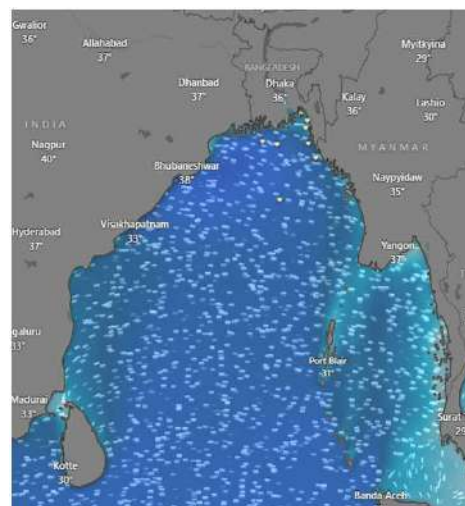
11 Mar 2025



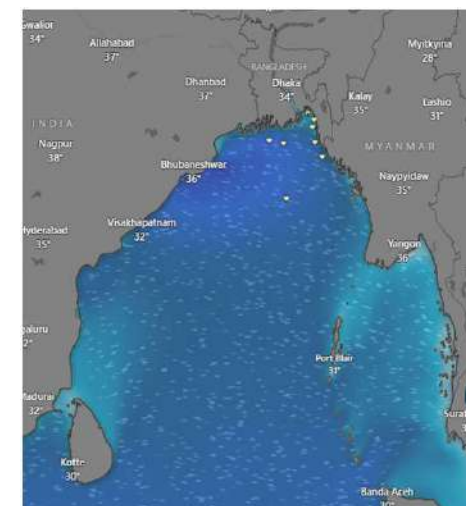
12 Mar 2025



13 Mar 2025



14 Mar 2025



Significant wave height (m)



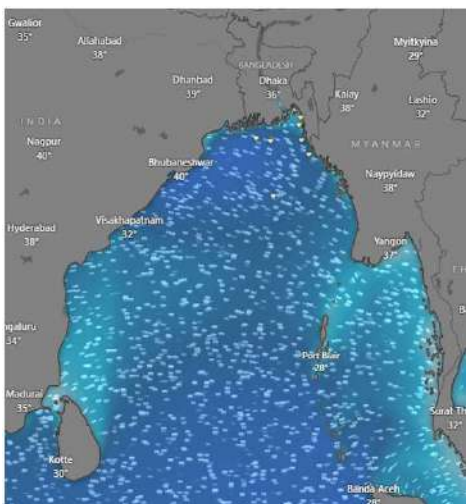
MARINE WEATHER FORECAST (11 to 18 Mar 2025)

MONGLA FAIRWAY (21° 26' N, 089° 34' E)

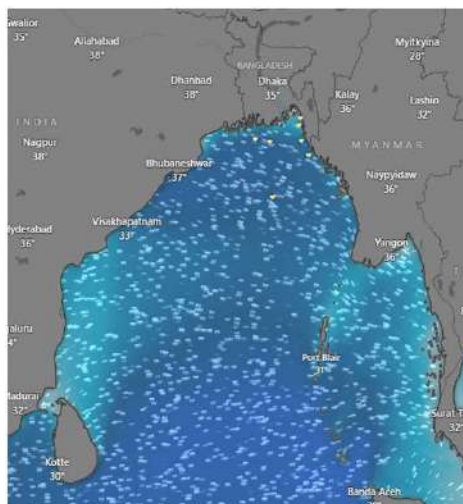


Date	Time	Air Temp (°C)		Sea Surface Temp (°C)	Baro Pressure (mbar)	Wind Direction	Wind Spd (kts)		Wave Ht (m)	Sea State	Humidity (%)	Prob of Rain (%)	Amount of Rain (mm)
		Max	Min				Gusting	Avg					
15-03-25 (Saturday)	0001	30	21	25	1008	S	19	16	1.2	3	89	6	0.0
	0600			24	1012	SSW	19	15	1.2	3	93	8	0.0
	1200			27	1009	W	17	11	1.1	3	56	2	0.0
	1800			26	1011	S	15	11	1.2	3	72	5	0.0
16-03-25 (Sunday)	0001	31	21	25	1008	SSW	18	14	1.2	3	93	7	0.0
	0600			24	1012	SW	18	12	1.2	3	96	9	0.0
	1200			27	1009	SSW	10	8	1.1	3	52	3	0.0
	1800			26	1011	SSW	18	13	1.2	3	75	6	0.0
17-03-25 (Monday)	0001	31	21	25	1008	SSW	17	12	1.2	3	89	6	0.0
	0600			24	1012	W	16	9	1.1	3	91	8	0.0
	1200			27	1009	SW	13	9	1.1	3	48	2	0.0
	1800			26	1011	SW	14	10	1.1	3	73	5	0.0
18-03-25 (Tuesday)	0001	31	21	25	1008	SSW	14	11	1.1	3	88	7	0.0
	0600			24	1012	SW	15	12	1.0	3	92	9	0.0
	1200			27	1009	SSW	15	9	1.0	3	45	3	0.0
	1800			26	1011	SSW	16	10	1.0	3	72	6	0.0

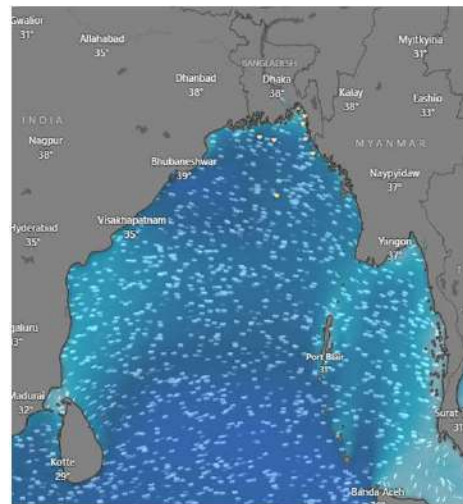
15 Mar 2025



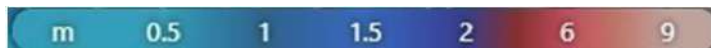
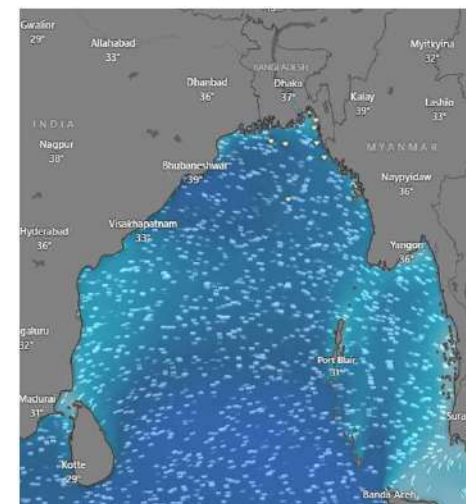
16 Mar 2025



17 Mar 2025



18 Mar 2025



Significant wave height (m)



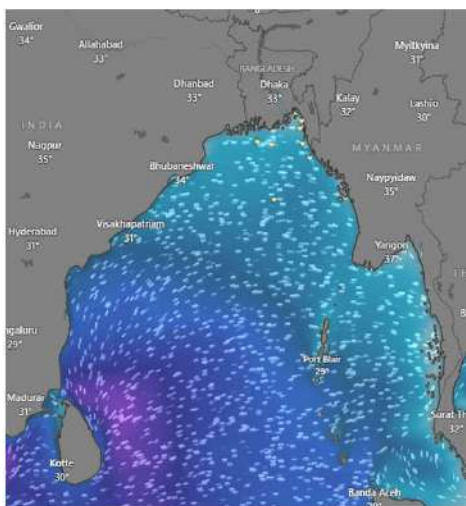
MARINE WEATHER FORECAST (11 to 18 Mar 2025)

OUTER EEZ (18° 48' N, 090° 30' E)

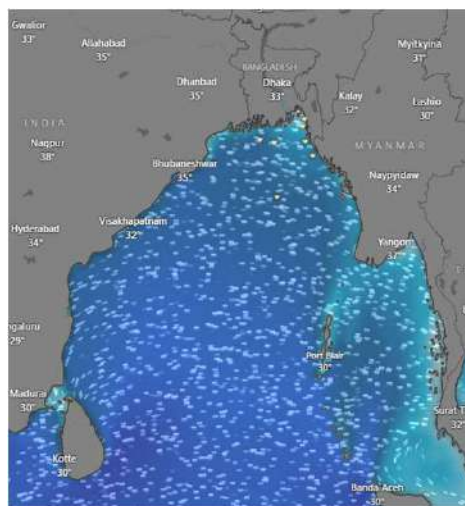


Date	Time	Air Temp (°C)		Sea Surface Temp (°C)	Baro Pressure (mbar)	Wind Direction	Wind Spd (kts)		Wave Ht (m)	Sea State	Humidity (%)	Prob of Rain (%)	Amount of Rain (mm)
		Max	Min				Gusting	Avg					
11-03-25 (Tuesday)	0001	32	22	26	1010	NNW	8	5	0.6	3	68	6	0.0
	0600			25	1015	NNW	11	8	0.6	3	76	8	0.0
	1200			28	1012	NNE	10	5	0.7	3	45	2	0.0
	1800			27	1013	NNW	9	6	0.7	3	77	7	0.0
12-03-25 (Wednesday)	0001	32	21	26	1010	NW	13	8	0.8	3	88	7	0.0
	0600			25	1015	W	10	7	0.9	3	90	9	0.0
	1200			28	1012	W	9	6	0.9	3	63	3	0.0
	1800			27	1013	SW	10	7	1.1	3	86	5	0.0
13-03-25 (Thursday)	0001	31	21	26	1010	SW	14	11	1.1	3	96	6	0.0
	0600			25	1015	SW	16	10	1.1	3	98	8	0.0
	1200			28	1012	SW	14	11	1.1	3	75	2	0.0
	1800			27	1013	SSW	12	10	1.0	3	94	6	0.0
14-03-25 (Friday)	0001	31	21	26	1010	SSW	14	12	1.1	3	95	5	0.0
	0600			25	1015	SSW	15	12	1.1	3	97	7	0.0
	1200			28	1012	SW	16	10	1.1	3	76	2	0.0
	1800			27	1013	SW	11	8	1.1	3	93	6	0.0

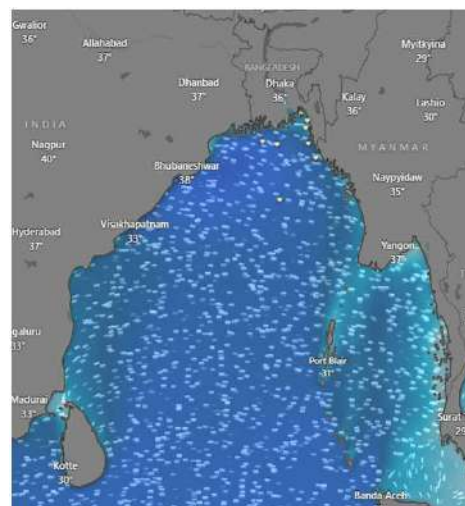
11 Mar 2025



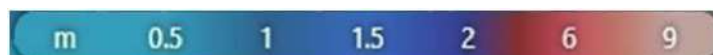
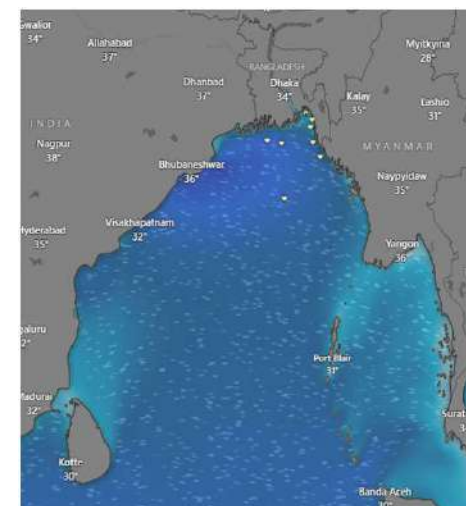
12 Mar 2025



13 Mar 2025



14 Mar 2025



Significant wave height (m)



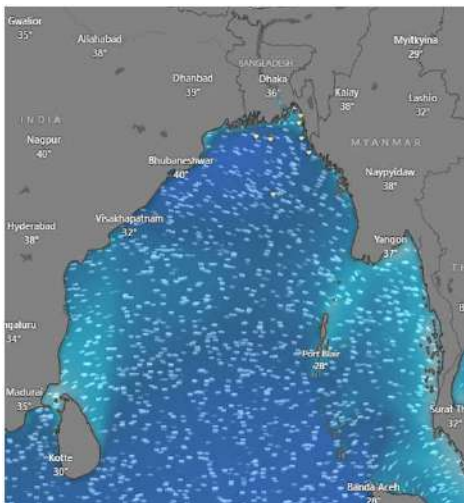
MARINE WEATHER FORECAST (11 to 18 Mar 2025)

OUTER EEZ (18° 48' N, 090° 30' E)

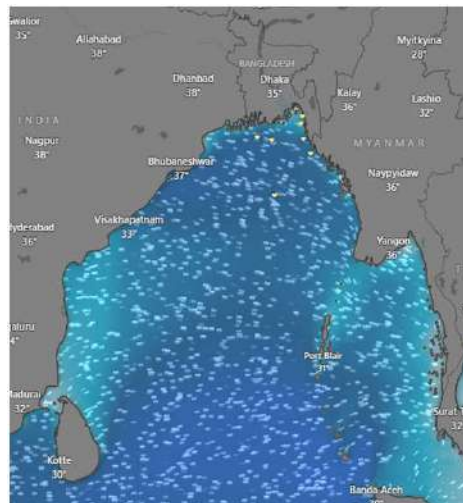


Date	Time	Air Temp (°C)		Sea Surface Temp (°C)	Baro Pressure (mbar)	Wind Direction	Wind Spd (kts)		ave Ht (m)	Sea State	Humidity (%)	Prob of Rain (%)	Amount of Rain (mm)
		Max	Min				Gusting	Avg					
15-03-25 (Saturday)	0001	32	22	26	1008	SW	18	14	1.2	3	98	6	0.0
	0600			25	1012	SW	17	13	1.2	3	99	8	0.0
	1200			28	1009	SSW	10	5	1.2	3	96	2	0.0
	1800			27	1011	SW	9	7	1.2	3	94	6	0.0
16-03-25 (Sunday)	0001	32	22	26	1008	SW	13	10	1.2	3	98	8	0.0
	0600			25	1012	SW	12	8	1.2	3	99	9	0.0
	1200			28	1009	SW	10	6	1.1	3	78	3	0.0
	1800			27	1011	W	12	9	1.0	3	94	6	0.0
17-03-25 (Monday)	0001	32	22	26	1008	W	13	10	1.1	3	98	8	0.0
	0600			25	1012	W	13	6	0.9	3	99	9	0.0
	1200			28	1009	SW	10	7	0.9	3	79	5	0.0
	1800			27	1011	W	10	7	0.9	3	95	7	0.0
18-03-25 (Tuesday)	0001	32	22	26	1008	SW	12	10	1.1	3	97	7	0.0
	0600			25	1012	SW	15	11	1.0	3	99	8	0.0
	1200			28	1009	SW	15	9	1.0	3	76	3	0.0
	1800			27	1011	SSW	11	7	1.0	3	92	5	0.0

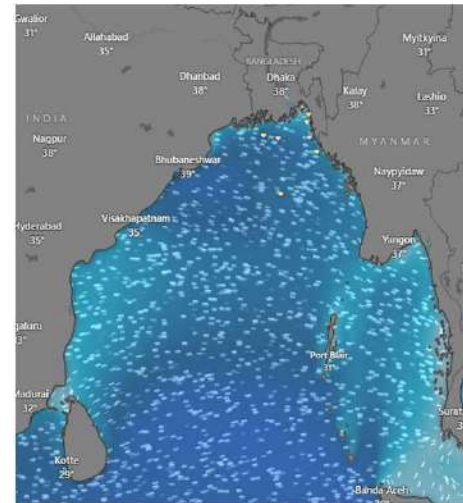
15 Mar 2025



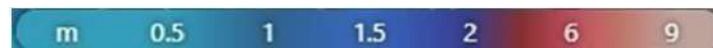
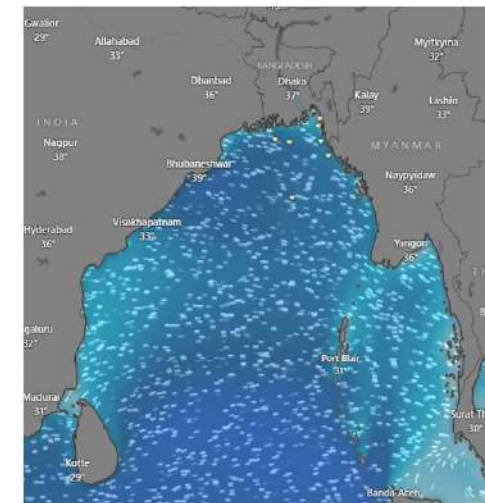
16 Mar 2025



17 Mar 2025



18 Mar 2025



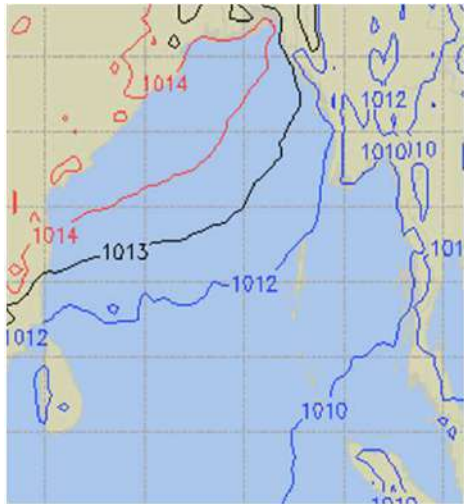
Significant wave height (m)



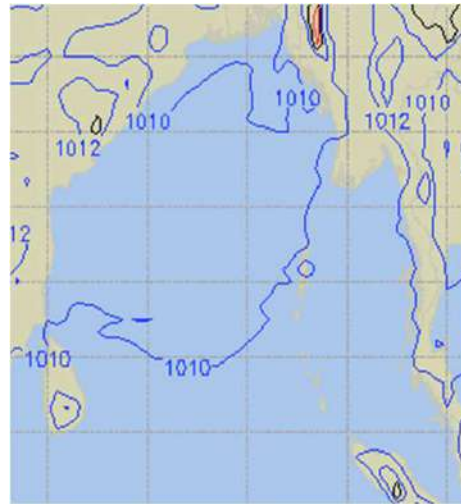
PREDICTED SURFACE PRESSURE FORECAST (11 to 17 Mar 2025)



11 Mar 2025



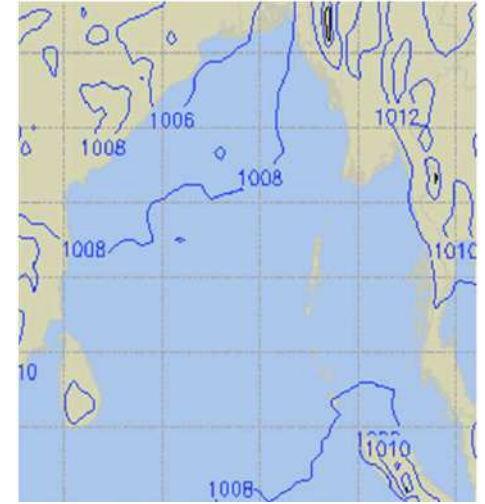
12 Mar 2025



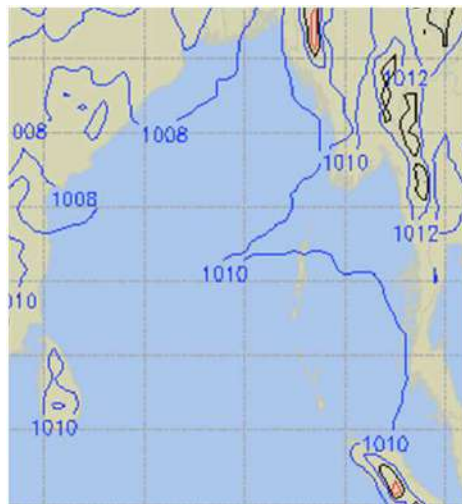
13 Mar 2025



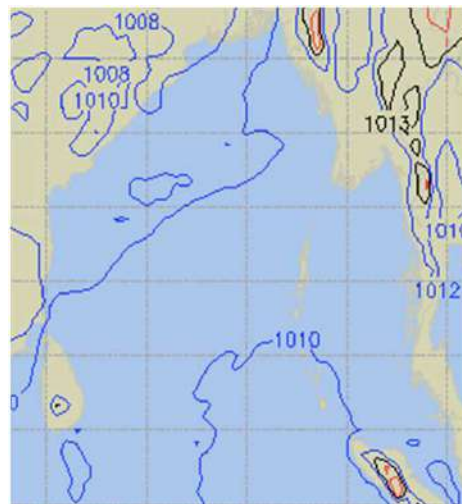
14 Mar 2025



15 Mar 2025



16 Mar 2025



17 Mar 2025

