



SUMMARY OF MARINE WEATHER FORECAST
COASTAL AREA OF BANGLADESH
DATE: 10 to 17 May 2026



Fleet Forecast	The trough lies over west Bengal and adjoining area. A Low pressure area is likely to form over Southwest Bay and adjoining area
Wind Direction, Speed	South-west/Southerly 08-12 kts, temporary gusting up to 20 kts
Wave Height & Sea State	Ctg Outer Anchorage: 0.2 to 0.6 m (Sea state: 2 to 3) Abeam to Cox's Bazar: 0.6 to 1.6 m (Sea state: 3 to 4) St. Martin's Island: 0.6 to 1.7 m (Sea state 3 to 4) Payra Fairway Buoy: 0.6 to 1.9 m (Sea state: 3 to 4) Mongla Fairway Buoy: 0.7 to 2.1 m (Sea state: 3 to 4) Outer EEZ: 0.7 to 1.9 m (Sea state: 3 to 4)
Sea Surface Temperature	25° C - 30° C
Baro Pressure	1005-1010 mb
Rainfall	Partly Cloudy to cloudy sky with light rain/thunder showers with gusty wind is likely to occur over Bay of Bengal and adjoining area.
Fog & Visibility	Hazy condition over the Bay of Bengal & coastal area, Visibility 1.0 – 5.0 km

Marine Weather Outlook (10 to 17 May 2026):

- Partly Cloudy to cloudy sky with light rain/thunder showers with gusty wind is likely to occur over Bay of Bengal and adjoining area.
- Rainfall activity may Increase during the last period.
- Hazy condition over the Bay of Bengal & coastal area.



MARINE WEATHER FORECAST (10 to 17 May 2026) PATENGA POINT (22° 12' N, 091° 38' E)



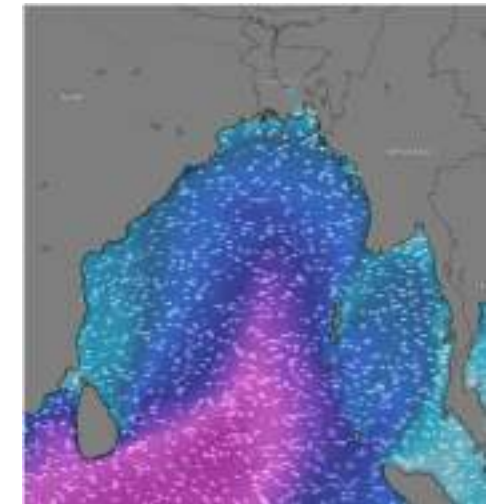
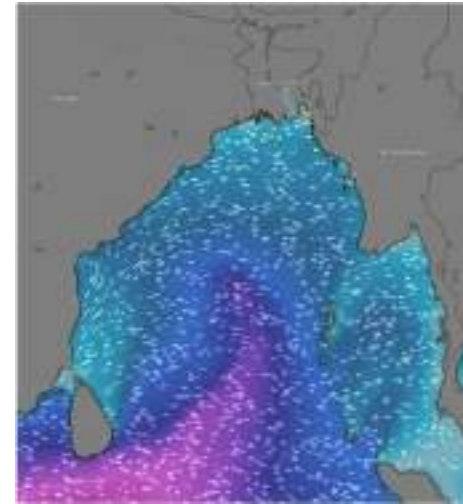
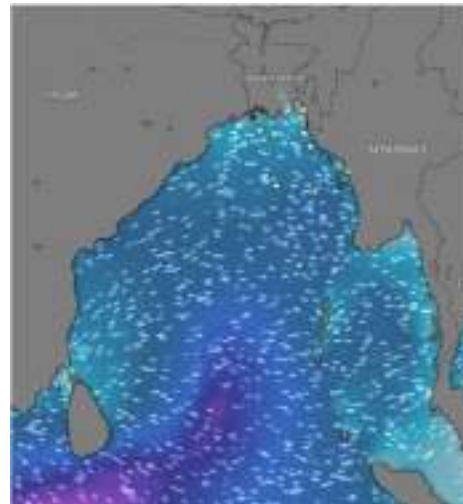
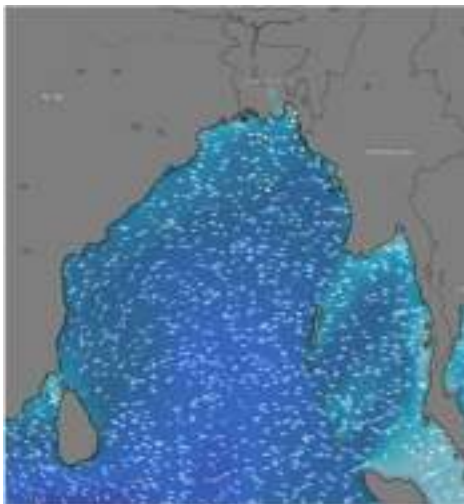
Date	Time	Air Temp (°C)		Sea Surface Temp (°C)	Baro Pressure (mbar)	Wind Direction	Wind Spd (kts)		Wave Ht (m)	Sea State	Humidity (%)	Prob of Rain (%)	Amount of Rain (mm)
		Max	Min				Gusting	Avg					
10-05-26 (Sunday)	0001	33	26	26	1010	SW	07	04	0.2	2	88	15	0.0
	0600			25	1011	SE	04	03	0.2	2	89	17	0.0
	1200			29	1009	SSW	11	07	0.2	2	76	10	0.0
	1800			27	1008	SSW	12	09	0.3	2	84	20	0.1
11-05-26 (Monday)	0001	33	26	26	1010	E	10	06	0.3	2	88	24	0.1
	0600			25	1011	NE	08	05	0.2	2	91	26	0.3
	1200			29	1009	SSW	07	04	0.2	2	82	17	0.0
	1800			27	1008	SSW	10	06	0.2	2	84	36	0.4
12-05-26 (Tuesday)	0001	33	26	26	1008	SE	07	04	0.2	2	89	41	0.4
	0600			25	1009	NE	05	03	0.2	2	90	40	0.4
	1200			29	1007	SW	10	06	0.2	2	77	32	0.3
	1800			27	1006	SSW	11	07	0.2	2	86	24	0.1
13-05-26 (Wednesday)	0001	33	26	26	1008	W	10	06	0.2	2	88	35	0.3
	0600			25	1009	N	10	05	0.2	2	91	31	0.2
	1200			29	1007	SSW	10	06	0.2	2	75	30	0.2
	1800			27	1006	S	13	06	0.2	2	85	32	0.3

10 May 2026

11 May 2026

12 May 2026

13 May 2026



Significant wave height (m)



MARINE WEATHER FORECAST (10 to 17 May 2026) PATENGA POINT (22° 12' N, 091° 38' E)



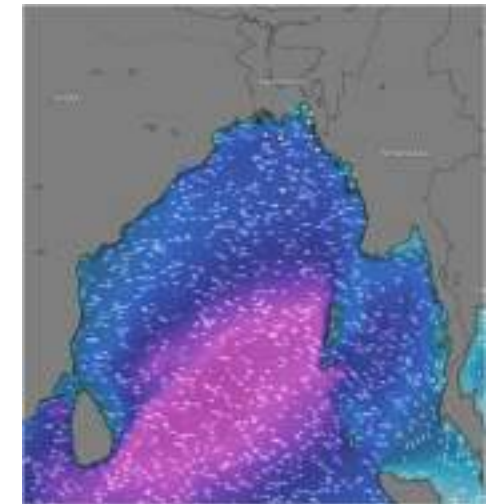
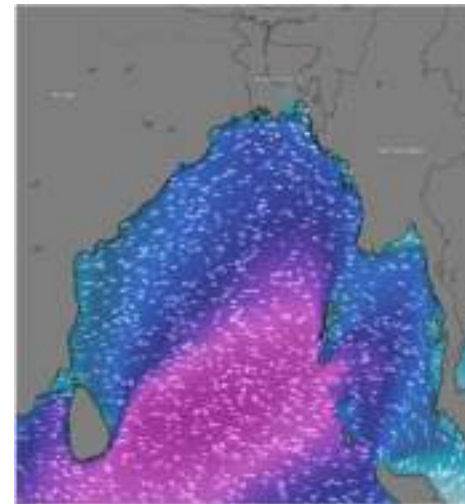
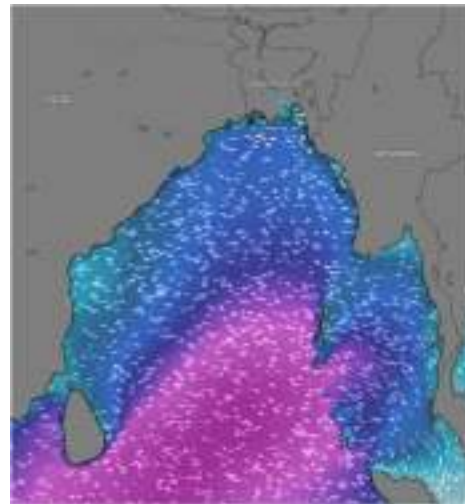
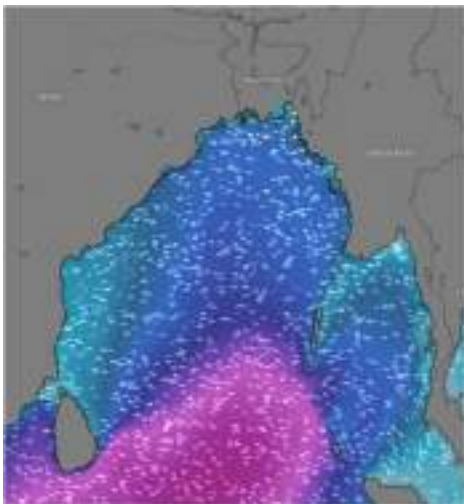
Date	Time	Air Temp (°C)		Sea Surface Temp (°C)	Baro Pressure (mbar)	Wind Direction	Wind Spd (kts)		Wave Ht (m)	Sea State	Humidity (%)	Prob of Rain (%)	Amount of Rain (mm)
		Max	Min				Gusting	Avg					
14-05-26 (Thursday)	0001	33	26	26	1008	SSE	10	07	0.3	2	89	39	0.3
	0600			27	1009	SE	13	08	0.3	2	88	33	0.2
	1200			30	1007	SSW	13	08	0.3	2	79	21	0.1
	1800			27	1006	SSW	17	10	0.4	2	78	24	0.1
15-05-26 (Friday)	0001	32	25	26	1007	SSW	13	09	0.6	3	89	39	0.5
	0600			25	1008	SSE	12	08	0.6	3	88	33	0.4
	1200			29	1006	SSW	14	12	0.5	3	79	21	0.0
	1800			27	1005	SSW	15	11	0.6	3	78	24	0.1
16-05-26 (Saturday)	0001	32	25	26	1007	S	18	14	0.6	3	88	41	0.5
	0600			25	1008	SSE	16	12	0.5	3	89	35	0.4
	1200			29	1006	SSW	16	12	0.5	3	72	24	0.1
	1800			27	1005	SSW	14	10	0.5	3	78	26	0.1
17-05-26 (Sunday)	0001	32	25	26	1007	SSE	14	10	0.4	2	86	25	0.1
	0600			28	1008	SE	12	08	0.4	2	88	30	0.2
	1200			30	1006	SSW	15	10	0.4	2	75	15	0.0
	1800			27	1005	SW	13	08	0.4	2	73	20	0.1

14 May 2026

15 May 2026

16 May 2026

17 May 2026



Significant wave height (m)



MARINE WEATHER FORECAST (10 to 17 May 2026) ABEAM TO KUTUBDIA (21° 51' N, 091° 40' E)



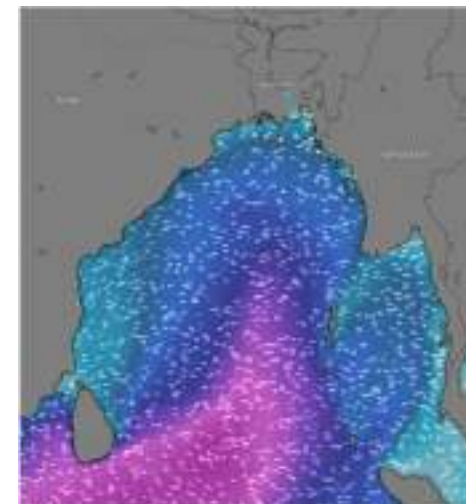
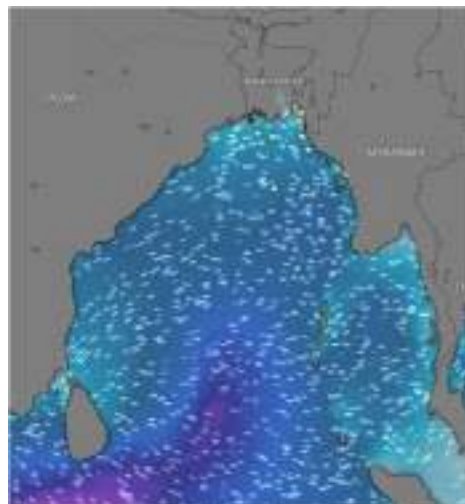
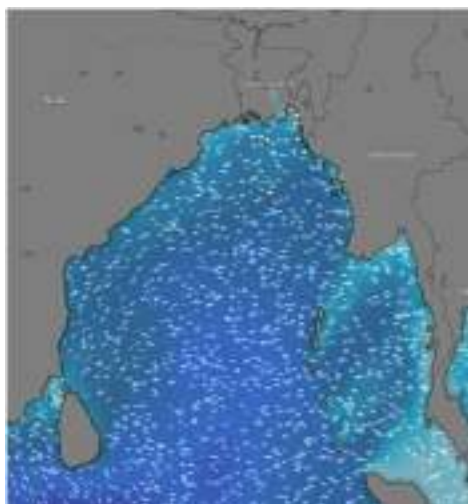
Date	Time	Air Temp (°C)		Sea Surface Temp (°C)	Baro Pressure (mbar)	Wind Direction	Wind Spd (kts)		Wave Ht (m)	Sea State	Humidity (%)	Prob of Rain (%)	Amount of Rain (mm)
		Max	Min				Gusting	Avg					
10-05-26 (Sunday)	0001	33	26	26	1010	NW	11	07	0.3	2	88	20	0.1
	0600			25	1011	N	07	04	0.4	2	89	24	0.1
	1200			29	1009	NW	12	08	0.4	2	72	10	0.0
	1800			27	1008	NW	14	10	0.4	2	87	20	0.1
11-05-26 (Monday)	0001	33	26	26	1010	W	11	07	0.4	2	88	24	0.1
	0600			25	1011	SW	07	04	0.3	2	91	20	0.0
	1200			29	1009	SSW	10	06	0.3	2	82	45	0.5
	1800			27	1008	W	09	05	0.3	2	84	31	0.3
12-05-26 (Tuesday)	0001	31	25	27	1008	SSE	07	04	0.2	2	89	10	0.0
	0600			26	1009	E	07	04	0.2	2	90	12	0.0
	1200			29	1007	NW	09	05	0.2	2	69	09	0.0
	1800			27	1006	SW	09	05	0.2	2	79	06	0.0
13-05-26 (Wednesday)	0001	31	25	27	1007	SE	07	04	0.2	2	89	13	0.0
	0600			26	1008	SE	09	05	0.2	2	90	20	0.0
	1200			29	1006	SSW	13	09	0.2	2	73	13	0.0
	1800			27	1005	SSW	12	08	0.3	2	81	12	0.0

10 May 2026

11 May 2026

12 May 2026

13 May 2026



Significant wave height (m)



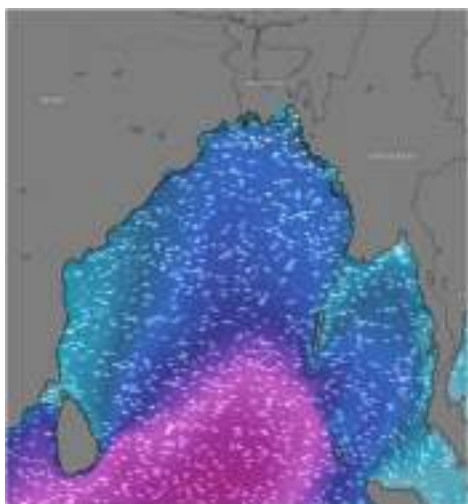
MARINE WEATHER FORECAST (10 to 17 May 2026)

ABEAM TO KUTUBDIA (21° 51' N, 091° 40' E)

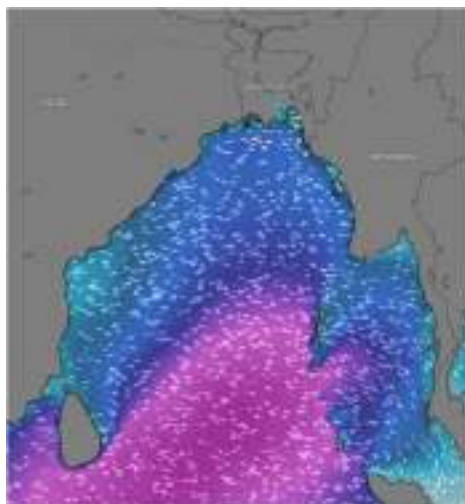


Date	Time	Air Temp (°C)		Sea Surface Temp (°C)	Baro Pressure (mbar)	Wind Direction	Wind Spd (kts)		Wave Ht (m)	Sea State	Humidity (%)	Prob of Rain (%)	Amount of Rain (mm)
		Max	Min				Gusting	Avg					
14-05-26 (Thursday)	0001	31	25	27	1006	SSE	12	08	0.3	3	90	22	0.0
	0600			26	1007	SSE	11	07	0.3	2	90	24	0.0
	1200			29	1005	SSW	16	12	0.4	2	74	23	0.0
	1800			27	1004	SSW	15	11	0.4	2	81	10	0.0
15-05-26 (Friday)	0001	32	26	27	1007	SSE	14	10	0.4	2	90	15	0.0
	0600			26	1006	SSE	13	09	0.4	2	90	24	0.0
	1200			30	1005	SSW	15	11	0.4	2	76	14	0.0
	1800			27	1004	SSW	16	12	0.4	2	83	09	0.0
16-05-26 (Saturday)	0001	32	26	27	1005	SSE	13	09	0.4	2	92	11	0.0
	0600			26	1006	SE	14	10	0.4	2	91	24	0.0
	1200			30	1004	SSW	16	12	0.4	2	76	10	0.0
	1800			27	1003	SSW	13	09	0.4	2	82	09	0.0
17-05-26 (Sunday)	0001	32	26	28	1006	S	13	09	0.4	2	93	24	0.0
	0600			27	1007	SSE	12	08	0.4	2	91	25	0.0
	1200			30	1005	SSW	14	10	0.3	2	80	13	0.0
	1800			29	1004	SW	12	08	0.4	2	83	08	0.0

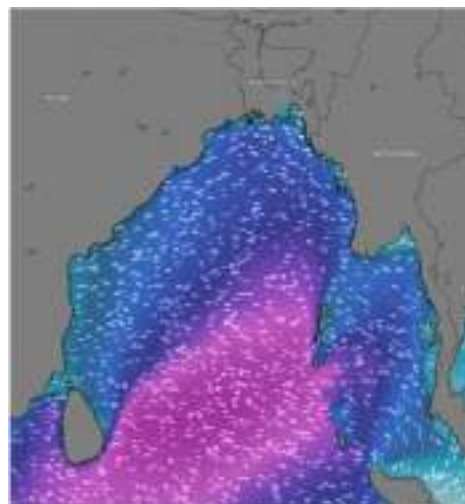
14 May 2026



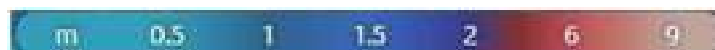
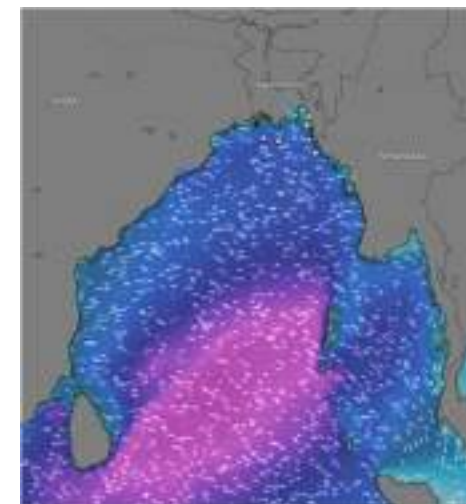
15 May 2026



16 May 2026



17 May 2026



Significant wave height (m)



MARINE WEATHER FORECAST (10 to 17 May 2026)

ABEAM TO ELEPHANT POINT (21° 11' N, 091° 52' E)

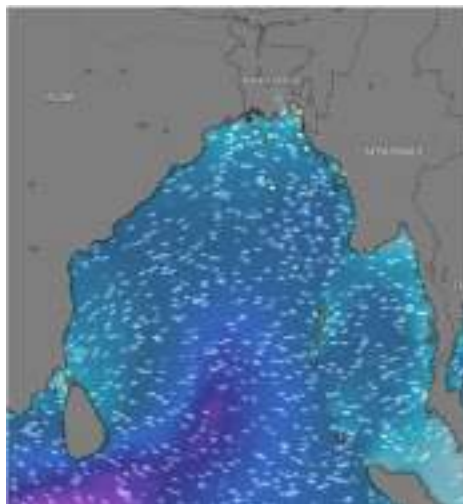


Date	Time	Air Temp (°C)		Sea Surface Temp (°C)	Baro Pressure (mbar)	Wind Direction	Wind Spd (kts)		Wave Ht (m)	Sea State	Humidity (%)	Prob of Rain (%)	Amount of Rain (mm)
		Max	Min				Gusting	Avg					
10-05-26 (Sunday)	0001	33	26	26	1010	NNW	09	05	0.9	3	86	20	0.1
	0600			25	1011	NE	09	05	0.8	3	89	24	0.1
	1200			29	1009	NNW	10	06	0.8	3	77	10	0.0
	1800			27	1008	NW	11	07	0.8	3	87	20	0.1
11-05-26 (Monday)	0001	33	26	26	1010	SW	09	05	0.7	3	88	26	0.1
	0600			25	1011	SSE	07	04	0.7	3	91	22	0.0
	1200			29	1009	SSE	05	03	0.6	3	82	38	0.4
	1800			27	1008	S	09	05	0.6	3	84	45	0.5
12-05-26 (Tuesday)	0001	33	26	27	1008	SE	13	09	0.6	3	89	12	0.0
	0600			26	1009	SE	13	09	0.6	3	90	15	0.0
	1200			29	1007	SSE	07	04	0.6	3	69	10	0.0
	1800			27	1006	SSW	10	06	0.6	3	79	07	0.0
13-05-26 (Wednesday)	0001	33	26	27	1007	SSE	10	06	0.7	3	89	15	0.0
	0600			26	1008	SE	14	10	0.8	3	90	26	0.1
	1200			29	1006	S	12	08	0.9	3	73	13	0.0
	1800			27	1005	S	12	08	1.0	3	81	15	0.0

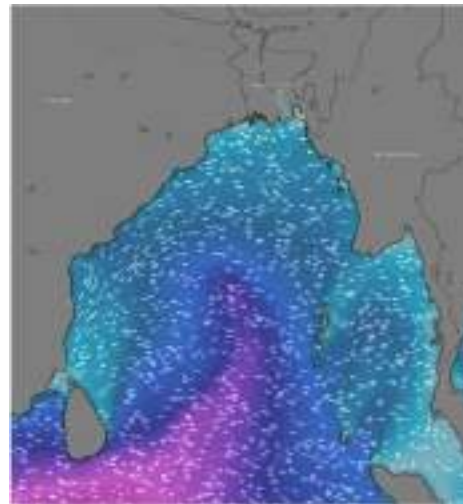
10 May 2026



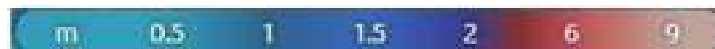
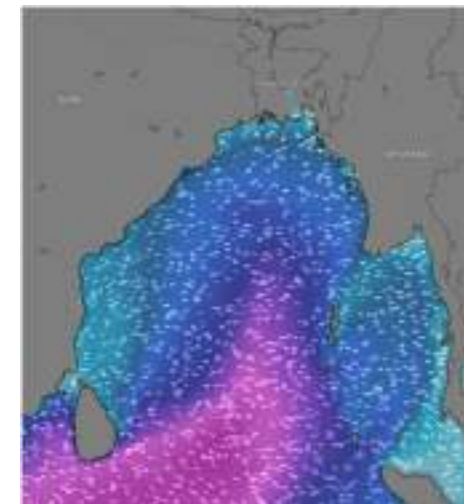
11 May 2026



12 May 2026



13 May 2026



Significant wave height (m)



MARINE WEATHER FORECAST (10 to 17 May 2026)

ABEAM TO ELEPHANT POINT (21° 11' N, 091° 52' E)



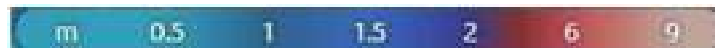
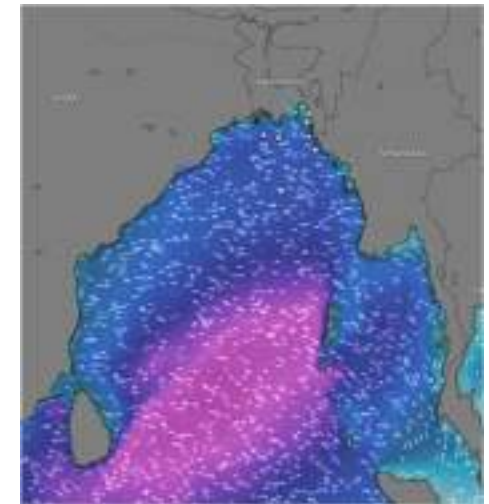
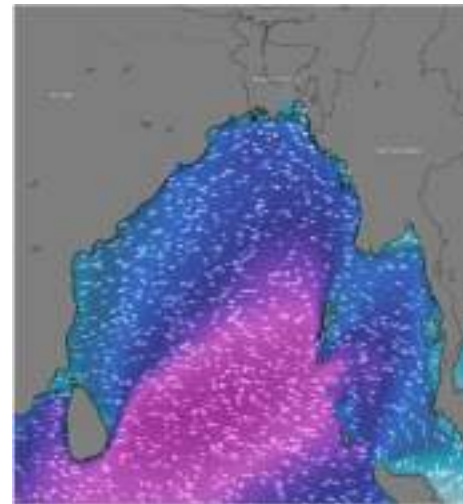
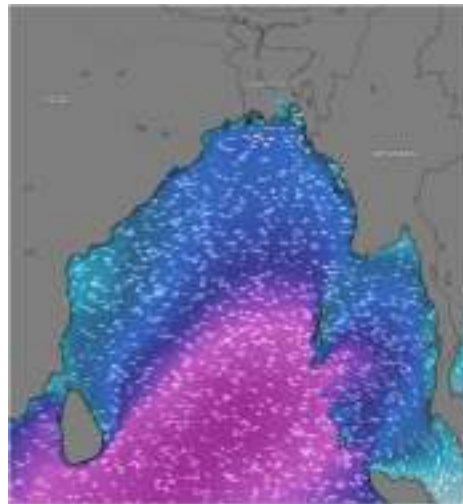
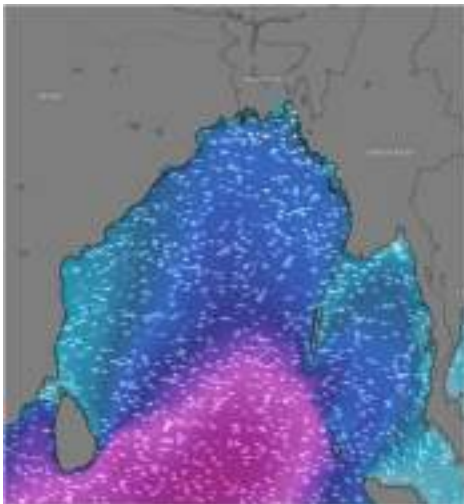
Date	Time	Air Temp (°C)		Sea Surface Temp (°C)	Baro Pressure (mbar)	Win Direction	Wind Spd (kts)		Wave Ht (m)	Sea State	Humidity (%)	Prob of Rain (%)	Amount of Rain (mm)
		Max	Min				Gusting	Avg					
14-05-26 (Thursday)	0001	33	26	27	1006	SSE	14	10	1.1	3	90	24	0.1
	0600			26	1007	SSE	15	11	1.1	3	90	22	0.0
	1200			29	1005	SSE	16	12	1.2	3	74	21	0.1
	1800			27	1004	SSE	17	13	1.3	4	81	13	0.0
15-05-26 (Friday)	0001	33	25	27	1007	SSE	17	13	1.3	4	90	13	0.0
	0600			26	1006	SSE	14	10	1.4	4	90	25	0.1
	1200			30	1005	SSE	15	11	1.3	4	76	14	0.0
	1800			27	1004	SSW	16	12	1.3	4	83	09	0.0
16-05-26 (Saturday)	0001	32	26	27	1005	SSW	17	13	1.5	4	92	11	0.0
	0600			26	1006	S	13	09	1.5	4	91	24	0.0
	1200			30	1004	S	15	11	1.5	4	76	10	0.0
	1800			27	1003	SW	15	11	1.6	4	82	09	0.0
17-05-26 (Sunday)	0001	32	26	28	1006	SSW	16	11	1.6	4	93	24	0.0
	0600			27	1007	S	13	09	1.5	4	91	25	0.0
	1200			30	1005	S	12	08	1.4	4	80	13	0.0
	1800			29	1004	SW	13	09	1.5	4	83	08	0.0

14 May 2026

15 May 2026

16 May 2026

17 May 2026



Significant wave height (m)



MARINE WEATHER FORECAST (10 to 17 May 2026)

ABEAM TO ST. MARTIN'S LIGHT HOUSE (20° 37' N, 092° 08' E)



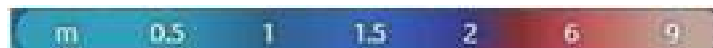
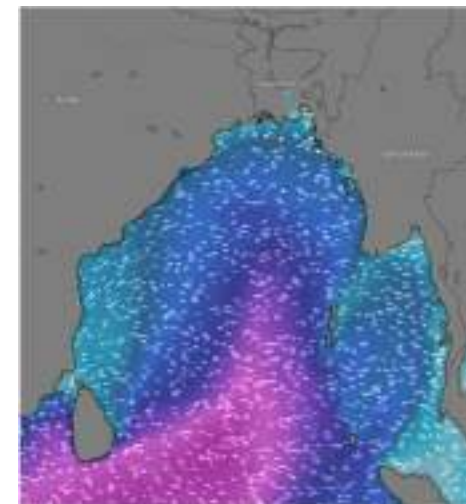
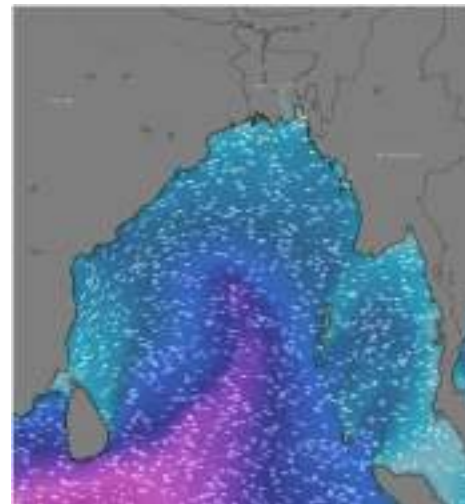
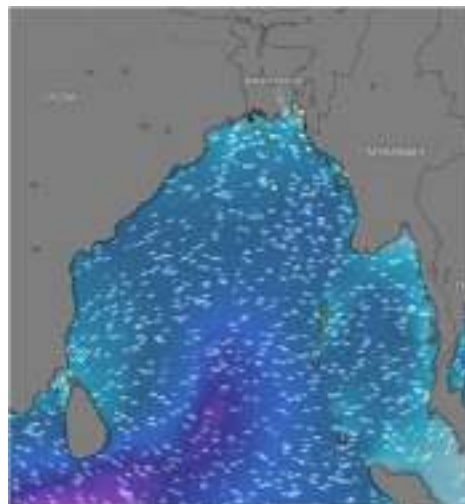
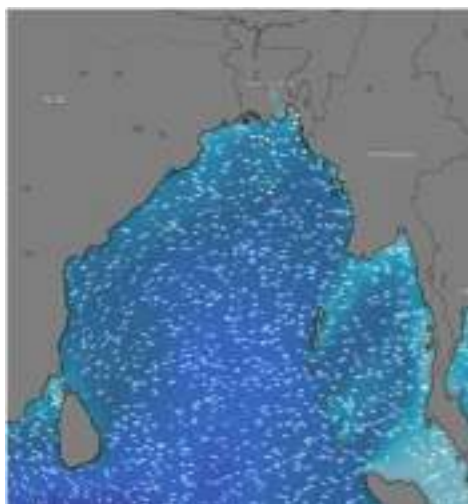
Date	Time	AirTemp (°C)		Sea Surface Temp (°C)	Baro Pressure (mbar)	Wind Direction	Wind Spd (kts)		Wave Ht (m)	Sea State	Humidity (%)	Prob of Rain (%)	Amount of Rain (mm)
		Max	Min				Gusting	Avg					
10-05-26 (Sunday)	0001	33	26	26	1010	NW	13	09	0.9	3	86	20	0.1
	0600			25	1011	N	10	06	0.8	3	89	24	0.1
	1200			29	1009	W	07	04	0.8	3	77	10	0.0
	1800			27	1008	W	13	09	0.8	3	87	20	0.1
11-05-26 (Monday)	0001	33	26	26	1010	W	07	04	0.8	3	88	22	0.0
	0600			25	1011	NE	09	05	0.7	3	91	23	0.0
	1200			29	1009	SE	10	06	0.7	3	82	36	0.3
	1800			27	1008	SSE	07	04	0.6	3	84	48	0.5
12-05-26 (Tuesday)	0001	33	26	27	1008	SSE	11	07	0.7	3	89	10	0.0
	0600			26	1009	SE	16	12	0.7	3	90	12	0.0
	1200			29	1007	SSE	09	05	0.7	3	69	09	0.0
	1800			27	1006	SSW	12	08	0.7	3	79	06	0.0
13-05-26 (Wednesday)	0001	33	26	27	1007	SSW	09	05	0.8	3	89	13	0.0
	0600			26	1008	SSE	07	04	0.9	3	90	20	0.0
	1200			29	1006	SSE	13	09	1.0	3	73	13	0.0
	1800			27	1005	S	13	09	1.1	3	81	12	0.0

10 May 2026

11 May 2026

12 May 2026

13 May 2026



Significant wave height (m)



MARINE WEATHER FORECAST (10 to 17 May 2026) ABEAM TO ST. MARTIN'S LIGHT HOUSE (20° 37' N, 092° 08' E)



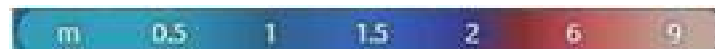
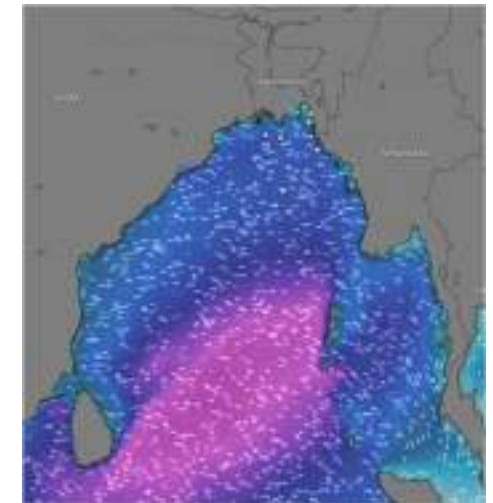
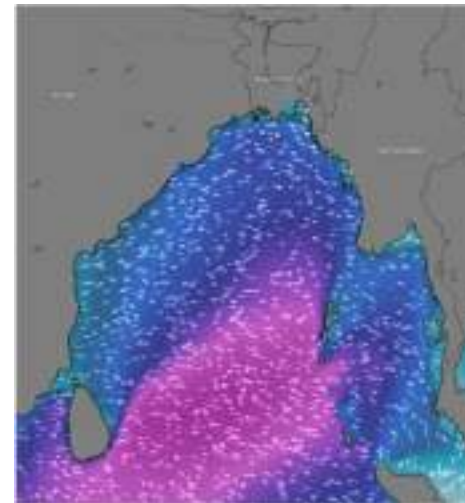
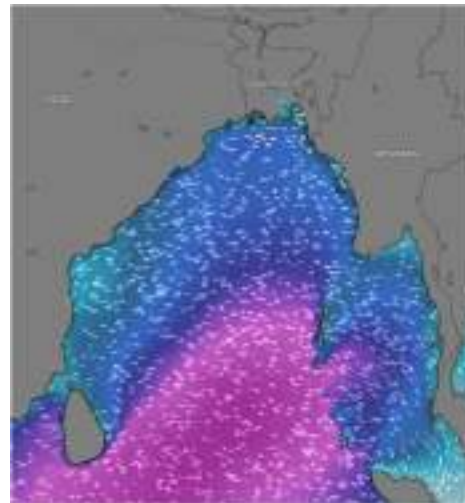
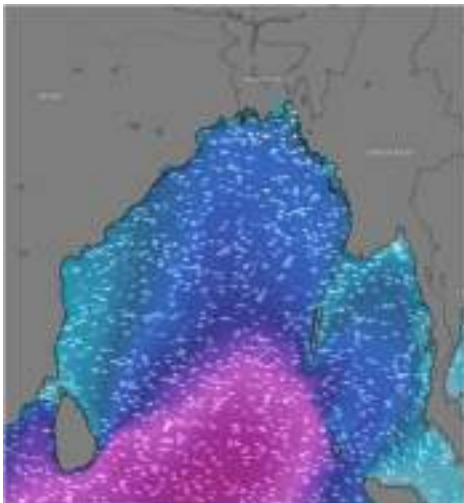
Date	Time	Air Temp (°C)		Sea Surface Temp (°C)	Baro Pressure (mbar)	Wind Direction	Wind Spd (kts)		Wave Ht (m)	Sea State	Humidity (%)	Prob of Rain (%)	Amount of Rain (mm)
		Max	Min				Gusting	Avg					
14-05-26 (Thursday)	0001	33	26	27	1006	SSE	12	08	1.1	3	90	22	0.0
	0600			26	1007	SE	13	09	1.2	3	90	24	0.0
	1200			29	1005	SSE	17	13	1.3	4	74	23	0.0
	1800			27	1004	SSE	16	12	1.3	4	81	10	0.0
15-05-26 (Friday)	0001	33	25	27	1007	S	13	09	1.4	4	90	15	0.0
	0600			26	1006	SSE	12	08	1.4	4	90	24	0.0
	1200			30	1005	SSE	12	08	1.3	4	76	14	0.0
	1800			27	1004	SSW	15	11	1.4	4	83	09	0.0
16-05-26 (Saturday)	0001	32	26	27	1005	SSW	14	10	1.6	4	92	11	0.0
	0600			26	1006	S	12	08	1.6	4	91	24	0.0
	1200			30	1004	SSW	12	08	1.7	4	76	10	0.0
	1800			27	1003	SW	14	10	1.7	4	82	09	0.0
17-05-26 (Sunday)	0001	32	26	28	1006	SSW	15	11	1.7	4	93	24	0.0
	0600			27	1007	S	11	07	1.6	4	91	25	0.0
	1200			30	1005	S	07	04	1.6	4	80	13	0.0
	1800			29	1004	SSW	12	08	1.6	4	83	08	0.0

14 May 2026

15 May 2026

16 May 2026

17 May 2026



Significant wave height (m)



MARINE WEATHER FORECAST (10 to 17 May 2026)



PAYRA FAIRWAY (21° 22' N, 090° 6' E)

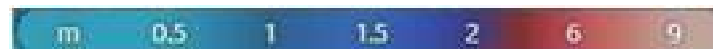
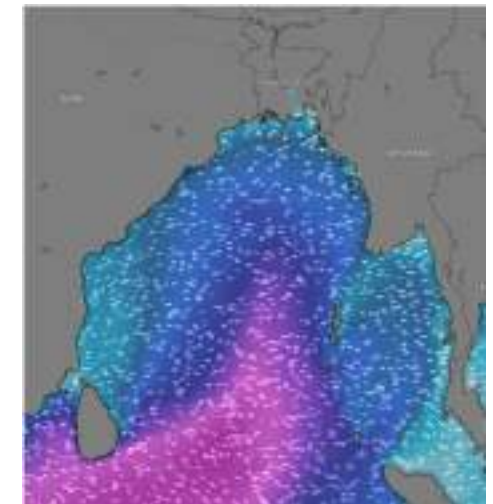
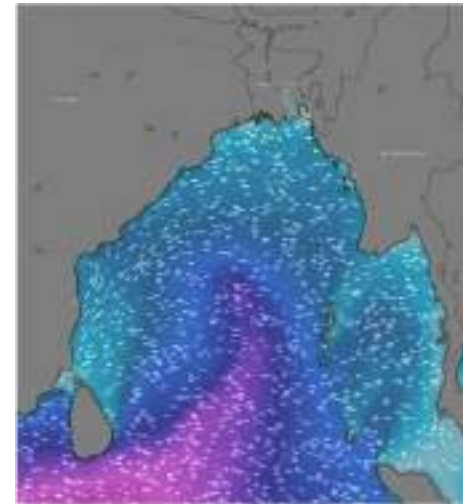
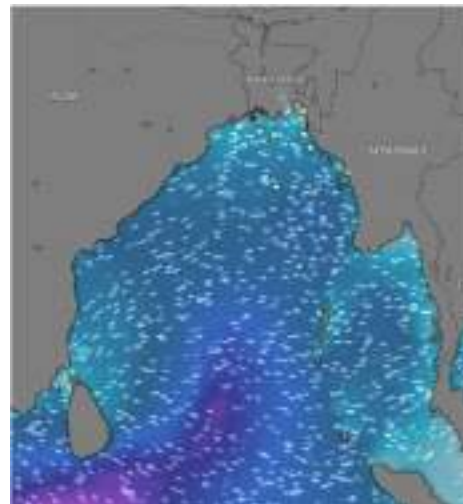
Date	Time	Air Temp (°C)		Sea Surface Temp (°C)	Baro Pressure (mbar)	Wind Direction	Wind Spd (kts)		Wave Ht (m)	Sea State	Humidity (%)	Prob of Rain (%)	Amount of Rain (mm)
		Max	Min				Gusting	Avg					
10-05-26 (Sunday)	0001	33	26	26	1010	SW	10	06	0.9	3	86	20	0.1
	0600			25	1011	NE	07	04	0.8	3	89	24	0.1
	1200			29	1009	SSE	11	07	0.8	3	77	10	0.0
	1800			27	1008	S	12	08	0.8	3	87	20	0.1
11-05-26 (Monday)	0001	33	26	26	1010	SSE	07	04	0.8	3	88	20	0.0
	0600			25	1011	NE	09	05	0.7	3	91	15	0.0
	1200			29	1009	SE	11	07	0.7	3	82	37	0.4
	1800			27	1008	SSE	10	06	0.6	3	84	51	0.5
12-05-26 (Tuesday)	0001	33	26	26	1008	SSW	07	04	0.6	3	89	41	0.4
	0600			25	1009	SE	09	05	0.7	3	90	40	0.4
	1200			29	1007	SSW	14	10	0.8	3	77	32	0.3
	1800			27	1006	S	12	08	0.9	3	86	24	0.1
13-05-26 (Wednesday)	0001	33	26	26	1008	SSW	12	09	0.7	3	90	40	0.3
	0600			25	1009	SE	12	05	0.8	3	91	36	0.3
	1200			29	1007	S	10	06	0.9	3	79	30	0.2
	1800			27	1006	SE	11	08	1.0	3	87	30	0.2

10 May 2026

11 May 2026

12 May 2026

13 May 2026



Significant wave height (m)



MARINE WEATHER FORECAST (10 to 17 May 2026)

PAYRA FAIRWAY (21° 22' N, 090° 6' E)



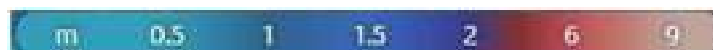
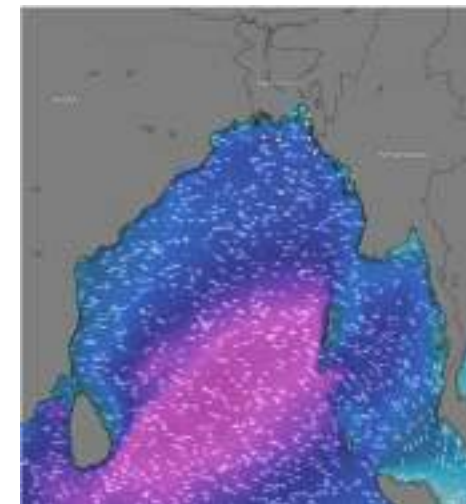
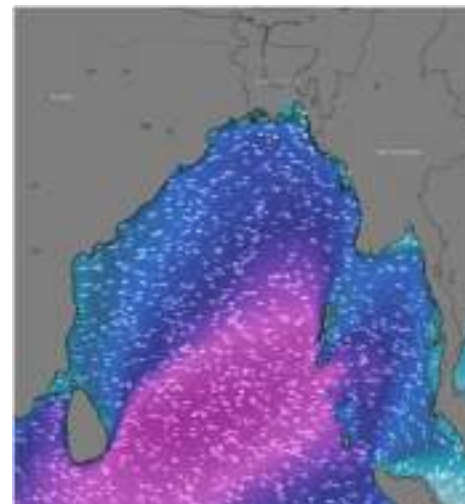
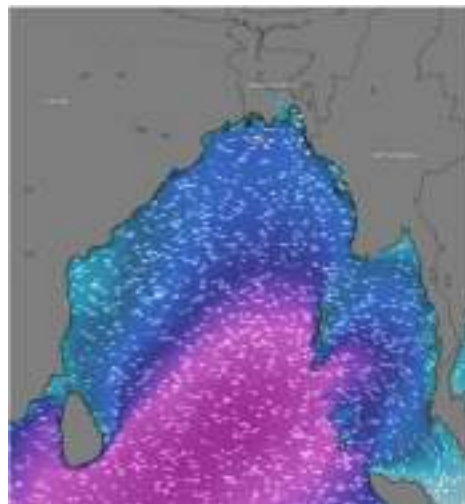
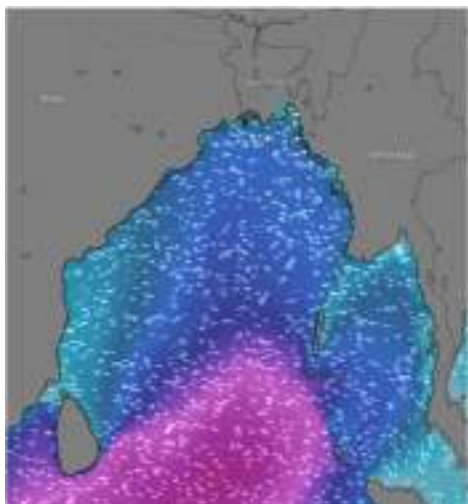
Date	Time	Air Temp (°C)		Sea Surface Temp (°C)	Baro Pressure (mbar)	Wind Direction	Wind Spd (kts)		Wae Ht (m)	Sea State	Humidity (%)	Prob of Rain (%)	Amount of Rain (mm)
		Max	Min				Gusting	Avg					
14-05-26 (Thursday)	0001	33	26	26	1008	SSW	13	09	1.1	3	87	24	0.1
	0600			25	1009	SSW	15	11	1.2	3	87	16	0.0
	1200			29	1007	SSW	12	08	1.2	3	78	23	0.1
	1800			27	1006	SSW	16	12	1.3	4	77	21	0.1
15-05-26 (Friday)	0001	32	25	26	1007	SSW	18	14	1.6	4	87	24	0.1
	0600			25	1008	SW	24	17	1.7	4	87	16	0.0
	1200			29	1006	SSW	17	13	1.7	4	78	23	0.0
	1800			27	1005	SSW	18	14	1.9	4	77	21	0.0
16-05-26 (Saturday)	0001	32	25	26	1007	SSW	26	19	1.9	4	89	32	0.3
	0600			25	1008	SSW	22	16	1.9	4	90	22	0.1
	1200			29	1006	SSW	14	10	1.8	4	76	27	0.2
	1800			27	1005	SSW	18	14	1.9	4	87	46	0.5
17-05-26 (Sunday)	0001	32	25	26	1007	SSW	21	16	1.8	4	87	13	0.0
	0600			25	1008	SSW	20	13	1.7	4	86	10	0.0
	1200			29	1006	SSW	17	10	1.6	4	80	11	0.0
	1800			27	1005	SSW	14	10	1.6	4	84	05	0.0

14 May 2026

15 May 2026

16 May 2026

17 May 2026



Significant wave height (m)



MARINE WEATHER FORECAST (10 to 17 May 2026)

MONGLA FAIRWAY (21° 26' N, 089° 34' E)



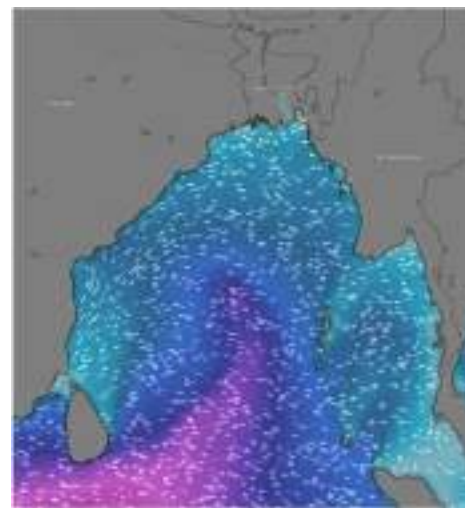
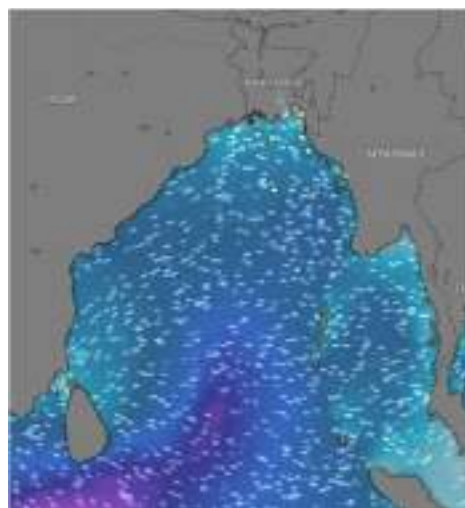
Date	Time	Air Temp (°C)		Sea Surface Temp (°C)	Baro Pressure (mbar)	Wind Direction	Wind Spd (kts)		Wave Ht (m)	Sea State	Humidity (%)	Prob of Rain (%)	Amount of Rain (mm)
		Max	Min				Gusting	Avg					
10-05-26 (Sunday)	0001	33	26	26	1010	SW	10	06	0.9	3	86	53	0.5
	0600			25	1011	NNW	07	04	0.9	3	90	45	0.5
	1200			29	1009	SSE	10	06	0.8	3	84	21	0.1
	1800			27	1008	S	11	07	0.8	3	87	34	0.3
11-05-26 (Monday)	0001	33	26	26	1010	SSW	10	06	0.8	3	86	30	0.5
	0600			25	1011	SW	09	05	0.7	3	90	24	0.5
	1200			29	1009	SSE	13	09	0.7	3	84	46	0.5
	1800			27	1008	SE	13	09	0.7	3	87	52	0.6
12-05-26 (Tuesday)	0001	33	26	26	1008	S	10	06	0.7	3	86	53	0.5
	0600			25	1009	SSE	11	07	0.8	3	90	45	0.5
	1200			29	1007	SSE	18	14	0.9	3	84	21	0.1
	1800			27	1006	S	14	10	0.9	3	87	34	0.3
13-05-26 (Wednesday)	0001	33	26	26	1008	S	13	10	0.8	3	87	51	0.4
	0600			25	1009	SSE	10	06	0.9	3	89	41	0.4
	1200			29	1007	SSE	11	07	1.0	3	86	22	0.1
	1800			27	1006	SE	12	10	1.1	3	88	32	0.2

10 May 2026

11 May 2026

12 May 2026

13 May 2026



Significant wave height (m)



MARINE WEATHER FORECAST (10 to 17 May 2026)

MONGLA FAIRWAY (21° 26' N, 089° 34' E)



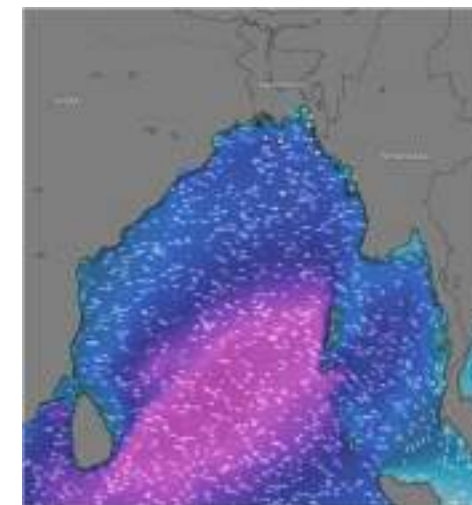
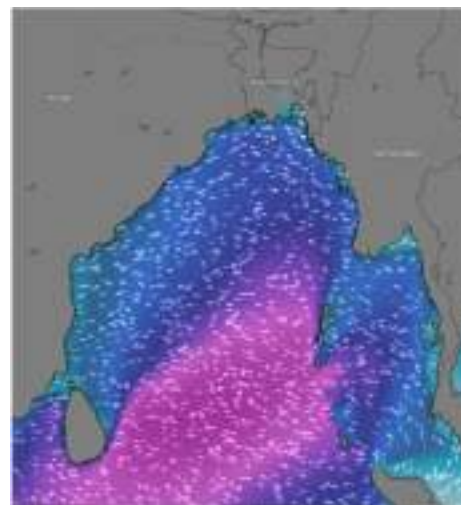
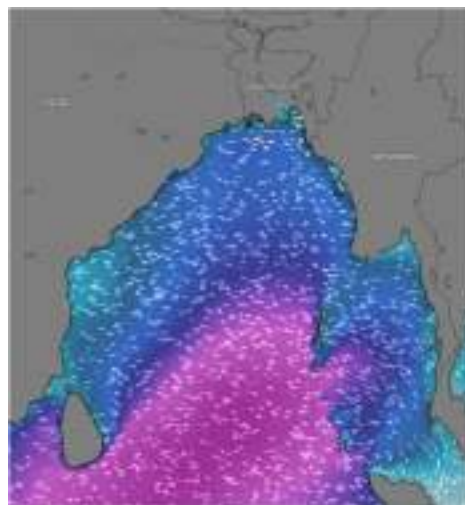
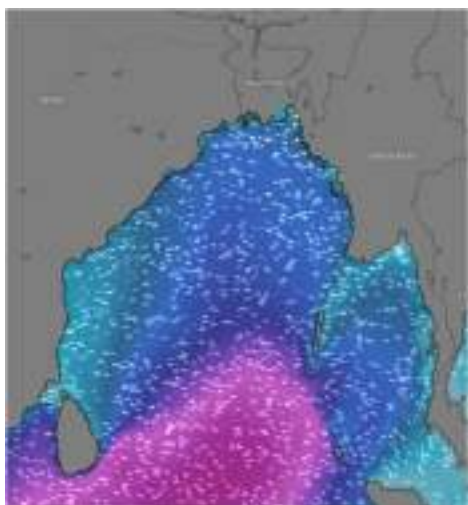
Date	Time	Air Temp (°C)		Sea Surface Temp (°C)	Baro Pressure (mbar)	Wind Direction	Wind Spd (kts)		Wave Ht (m)	Sea State	Humidity (%)	Prob of Rain (%)	Amount of Rain (mm)
		Max	Min				Gusting	Avg					
14-05-26 (Thursday)	0001	33	26	26	1008	SSW	14	10	1.2	3	88	18	0.1
	0600			25	1009	SSW	17	13	1.3	4	87	33	0.2
	1200			29	1007	SSE	13	09	1.3	4	76	52	0.4
	1800			27	1006	SSW	17	13	1.4	4	71	39	0.3
15-05-26 (Friday)	0001	32	25	26	1007	SSW	25	17	1.8	4	88	15	0.1
	0600			25	1008	SSW	26	18	1.8	4	90	33	0.2
	1200			29	1006	SSW	17	13	1.7	4	75	52	0.4
	1800			27	1005	SSW	22	16	2.0	4	86	39	0.3
16-05-26 (Saturday)	0001	32	25	26	1007	SSW	27	19	2.1	4	89	42	0.4
	0600			25	1008	SSW	26	18	2.0	4	90	56	0.6
	1200			29	1006	SW	15	11	1.9	4	74	24	0.1
	1800			27	1005	SSW	22	16	1.8	4	87	47	0.5
17-05-26 (Sunday)	0001	32	25	26	1007	S	21	17	2.0	4	87	07	0.0
	0600			25	1008	S	19	15	1.8	4	88	09	0.0
	1200			29	1006	S	16	11	1.7	4	72	15	0.0
	1800			27	1005	S	20	12	1.7	4	73	13	0.0

14 May 2026

15 May 2026

16 May 2026

17 May 2026



Significant wave height (m)



MARINE WEATHER FORECAST (10 to 17 May 2026)

OUTER EEZ (18° 48' N, 090° 30' E)



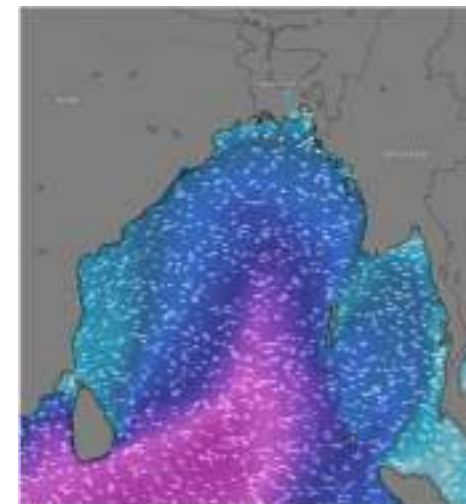
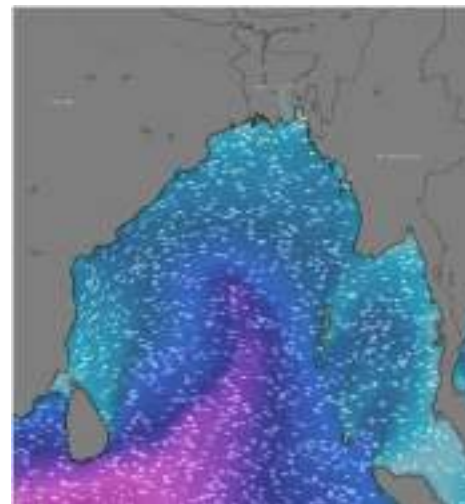
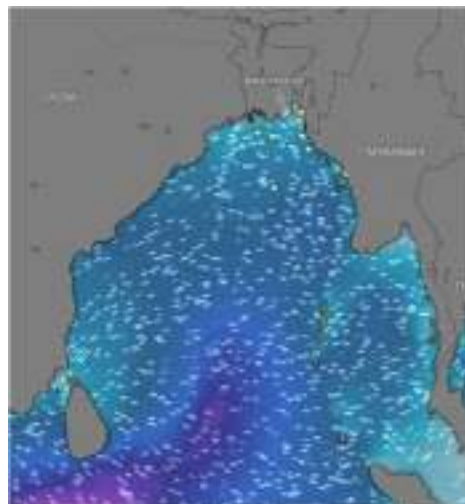
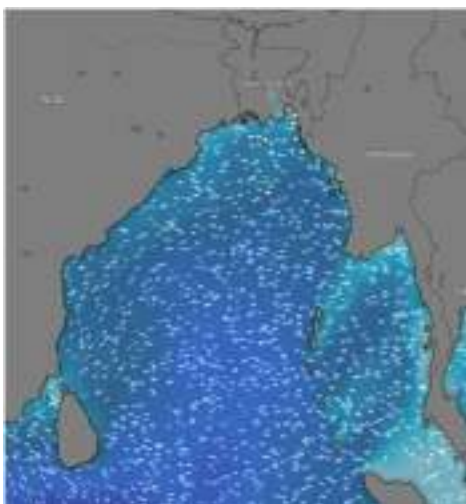
Date	Time	Air Temp (°C)		Sea Surface Temp (°C)	Baro Pressure (mbar)	Wind Direction	Wind Spd (kts)		Wave Ht (m)	Sea State	Humidity (%)	Prob of Rain (%)	Amount of Rain (mm)
		Max	Min				Gusting	Avg					
10-05-26 (Sunday)	0001	32	27	26	1010	NNW	07	04	1.0	3	90	50	0.5
	0600			25	1011	NNE	10	06	1.0	3	92	42	0.4
	1200			29	1009	E	12	08	1.0	3	85	26	0.1
	1800			27	1008	SE	14	10	1.0	3	89	45	0.5
11-05-26 (Monday)	0001	32	26	26	1010	SSE	20	15	1.0	3	90	18	0.0
	0600			25	1011	SSE	12	08	0.9	3	92	24	0.1
	1200			29	1009	SSE	10	06	0.8	3	85	45	0.5
	1800			27	1008	S	09	05	0.8	3	89	53	0.5
12-05-26 (Tuesday)	0001	33	26	27	1008	SSE	10	05	0.7	3	89	12	0.0
	0600			26	1009	NE	07	04	0.7	3	90	15	0.0
	1200			29	1007	NE	09	05	0.7	3	69	08	0.0
	1800			27	1006	SSE	11	07	0.8	3	79	07	0.0
13-05-26 (Wednesday)	0001	33	26	27	1007	SSW	11	07	0.9	3	89	15	0.0
	0600			26	1008	SSE	07	04	1.0	3	90	20	0.0
	1200			29	1006	SSE	12	08	1.1	3	73	13	0.0
	1800			27	1005	SSE	13	09	1.2	3	81	12	0.0

10 May 2026

11 May 2026

12 May 2026

13 May 2026



Significant wave height (m)



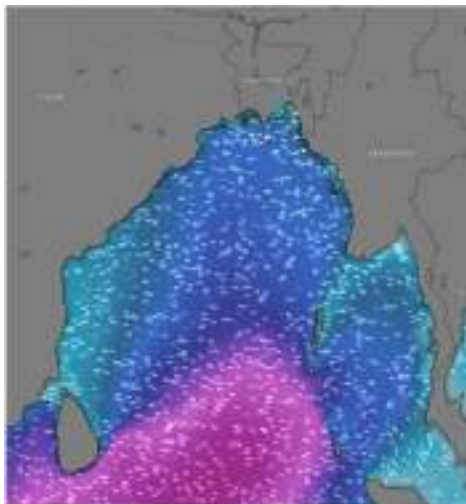
MARINE WEATHER FORECAST (10 to 17 May 2026)

OUTER EEZ (18° 48' N, 090° 30' E)



Date	Time	Air Temp (°C)		Sea Surface Temp (°C)	Baro Pressure (mbar)	Wind Direction	Wind Spd (kts)		Wave Ht (m)	Sea State	Humidity (%)	Prob of Rain (%)	Amount of Rain (mm)
		Max	Min				Gusting	Avg					
14-05-26 (Thursday)	0001	33	26	27	1006	SSE	14	10	1.3	4	90	22	0.0
	0600			26	1007	SSE	12	08	1.4	4	90	24	0.0
	1200			29	1005	SSE	14	10	1.4	4	74	23	0.0
	1800			27	1004	S	14	10	1.5	4	81	10	0.0
15-05-26 (Friday)	0001	33	25	27	1007	SSW	14	10	1.6	4	90	20	0.0
	0600			26	1006	SW	13	09	1.6	4	90	26	0.0
	1200			30	1005	SSW	10	06	1.5	4	76	15	0.0
	1800			27	1004	SSW	17	13	1.6	4	83	12	0.0
16-05-26 (Saturday)	0001	32	26	27	1005	SSW	17	13	1.8	4	92	11	0.0
	0600			26	1006	SSW	16	12	1.8	4	91	25	0.0
	1200			30	1004	SSW	13	09	1.8	4	76	16	0.0
	1800			27	1003	SSW	14	10	1.9	4	82	10	0.0
17-05-26 (Sunday)	0001	32	26	28	1006	SSW	18	14	1.8	4	93	25	0.0
	0600			27	1007	SSW	14	10	1.7	4	91	27	0.0
	1200			30	1005	SSW	11	07	1.7	4	80	16	0.0
	1800			29	1004	SSW	13	09	1.7	4	83	08	0.0

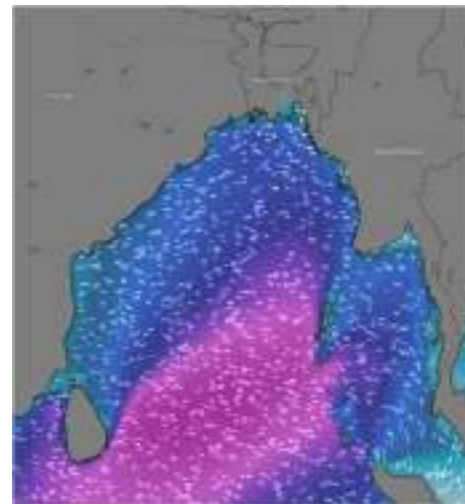
14 May 2026



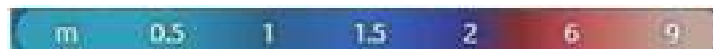
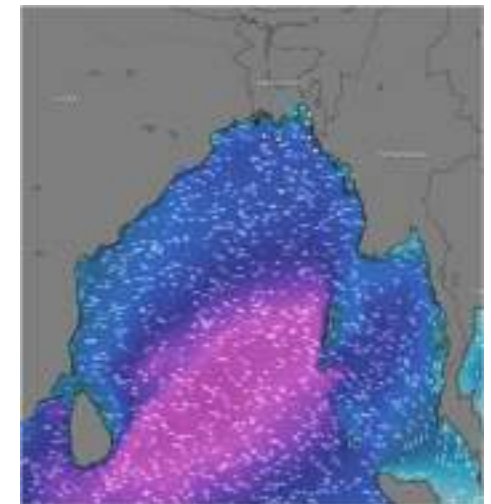
15 May 2026



16 May 2026



17 May 2026



Significant wave height (m)



PREDICTED SURFACE PRESSURE FORECAST (10 to 16 May 2026)



10 May 2026



11 May 2026



12 May 2026



13 May 2026



14 May 2026



15 May 2026



16 May 2026

