

MARINE WEATHER FORECAST- NEAR AUTHORITY BUOY (Lat 22° 12' N, Long 091° 38' E)

DATE : 08 to 15 May 2024

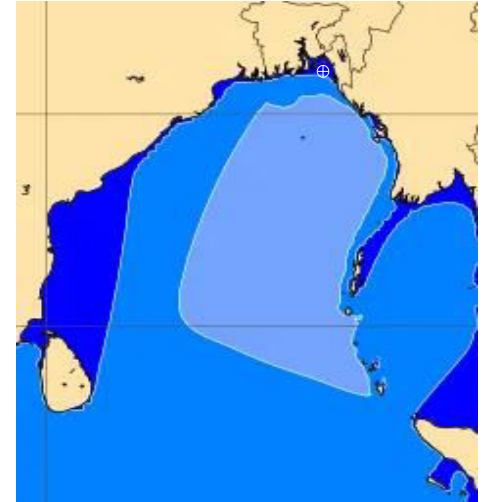
Date	Time	Max Wind Spd (kts)	Wind Direction	Wave Ht (m)	Sea State	Baro Pressure	Air Temp		Sea Surface Temp	Humidity (%)	Prob of Rain (%)	Sea State	Wave Ht (m)
							Max	Min					
08-05-24	0001	6	WSW	0.2	2	1011	32	23	29	87%	18% (0.0 mm)	0	0
	0600	6	E	0.2	2	1010			28	98%	56% (5.2 mm)	1	0 - 0.1
	1200	13	WSW	0.3	2	1011			29	76%	24% (1.2 mm)	2	0.1 - 0.5
	1800	8	WSW	0.2	2	1006			29	89%	18% (0.0 mm)	3	0.5 - 1.25
09-05-24	0001	5	S	0.1	1	1009	32	23	29	88%	17% (0.0 mm)	4	1.25 - 2.5
	0600	7	ESE	0.1	1	1009			28	97%	15% (0.0 mm)	5	2.5 - 4.0
	1200	8	WSW	0.2	2	1010			29	79%	18% (0.0 mm)	6	4.0 - 6.0
	1800	13	WSW	0.3	2	1007			29	85%	17% (0.0 mm)	7	6.0 - 9.0
10-05-24	0001	6	NW	0.1	1	1010	33	23	29	88%	16% (0.0 mm)	8	9.0 - 14.0
	0600	5	ESE	0.1	1	1010			28	97%	18% (0.0 mm)	9	Over 14.0
	1200	7	SW	0.1	1	1011			29	76%	17% (0.0 mm)		
	1800	6	W	0.1	1	1007			29	88%	15% (0.0 mm)		
11-05-24	0001	7	SW	0.1	1	1010	33	23	29	87%	18% (0.0 mm)		
	0600	8	S	0.1	1	1011			28	96%	17% (0.0 mm)		
	1200	6	SW	0.1	1	1012			29	78%	16% (0.0 mm)		
	1800	5	SSW	0.1	1	1008			29	87%	18% (0.0 mm)		

08 May 24 Wed (Probability 98%)

09 May 24 Thu (Probability 95%)

10 May 24 Fri (Probability 90%)

11 May 24 Sat (Probability 80%)



Significant wave height (m)

MARINE WEATHER FORECAST- NEAR AUTHORITY BUOY (Lat 22° 12'N, Long 091° 38'E)

DATE : 08 to 15 May 2024

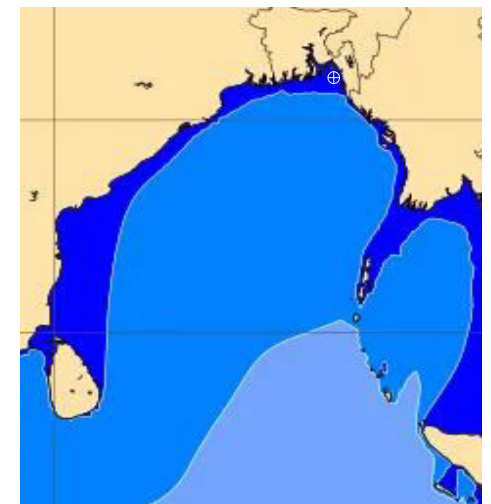
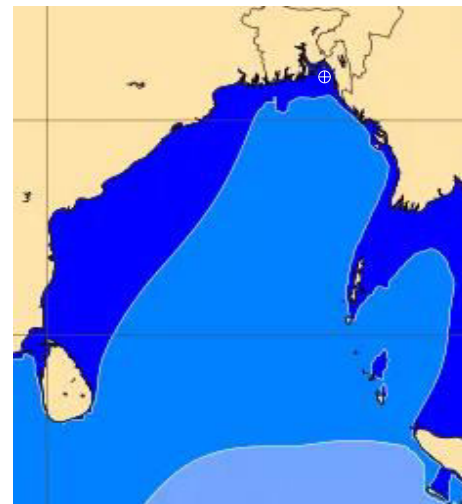
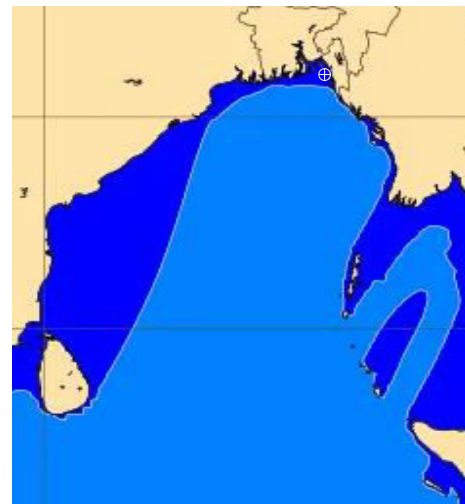
Date	Time	Max Wind Spd (kts)	Wind Direction	Wave Ht (m)	Sea State	Baro Pressure	Air Temp		Sea Surface Temp	Humidity (%)	Prob of Rain (%)	Sea State	Wave Ht (m)
							Max	Min					
12-05-24	0001	12	SE	0.2	2	1009	33	24	29	87%	17% (0.0 mm)	0	0
	0600	15	SE	0.3	2	1008			28	97%	19% (0.0 mm)	1	0 - 0.1
	1200	11	SSE	0.2	2	1010			29	75%	15% (0.0 mm)	2	0.1 - 0.5
	1800	10	SW	0.2	2	1007			28	86%	18% (0.0 mm)	3	0.5 - 1.25
13-05-24	0001	13	SE	0.2	2	1009	34	24	29	83%	17% (0.0 mm)	4	1.25 - 2.5
	0600	15	ESE	0.3	2	1010			28	97%	16% (0.0 mm)	5	2.5 - 4.0
	1200	14	SE	0.2	2	1011			29	75%	18% (0.0 mm)	6	4.0 - 6.0
	1800	12	SSE	0.2	2	1008			28	88%	17% (0.0 mm)	7	6.0 - 9.0
14-05-24	0001	16	SE	0.3	2	1009	34	24	29	86%	12% (0.0 mm)	8	9.0 - 14.0
	0600	13	ESE	0.2	2	1010			28	98%	15% (0.0 mm)	9	Over 14.0
	1200	15	SE	0.3	2	1011			29	74%	16% (0.0 mm)		
	1800	10	SSE	0.2	2	1008			28	85%	13% (0.0 mm)		
15-05-24	0001	11	SE	0.2	2	1009	34	24	29	86%	18% (0.0 mm)		
	0600	14	SE	0.3	2	1010			28	98%	15% (0.0 mm)		
	1200	12	SSE	0.2	2	1011			29	74%	17% (0.0 mm)		
	1800	13	SE	0.2	2	1008			28	85%	16% (0.0 mm)		

12 May 24 Sun (Probability 70%)

13 May 24 Mon (Probability 60%)

14 May 24 Tue (Probability 50%)

15 May 24 Wed (Probability 50%)



0 0.5 1 2 3 4 6 8 10 12 14 20

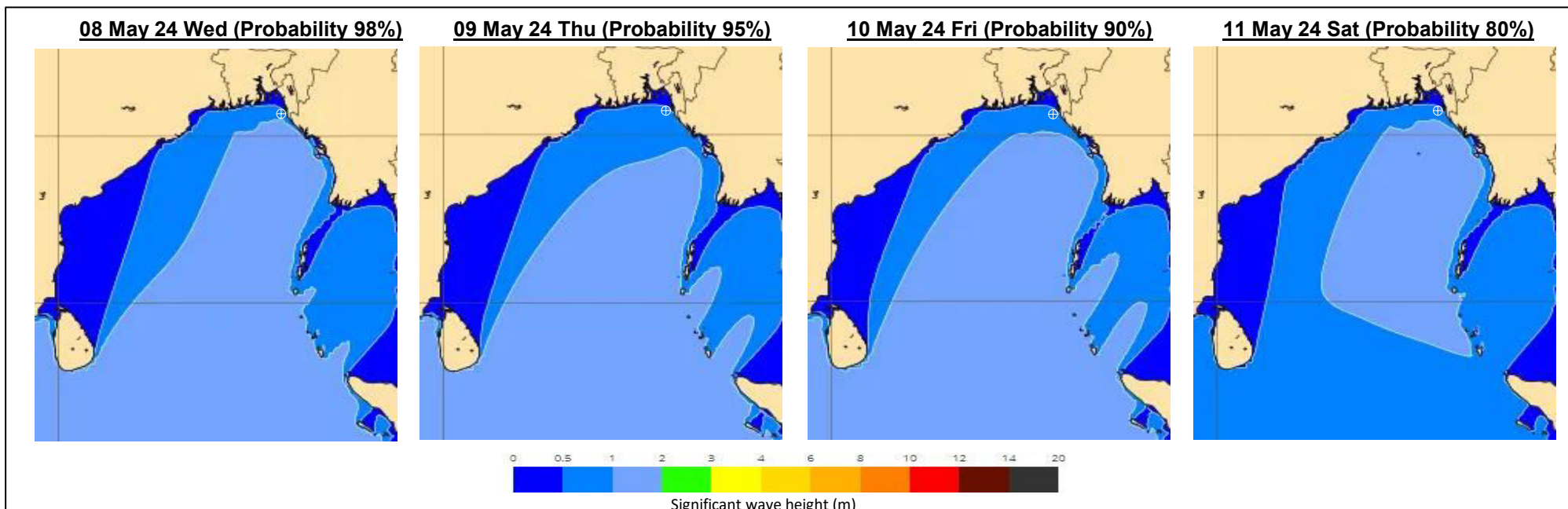


Significant wave height (m)

MARINE WEATHER FORECAST- 20 NM WEST OF ELEPHANT POINT (Lat 21° 10' N, Long 091° 42' E)

DATE : 08 to 15 May 2024

Date	Time	Max Wind Spd (kts)	Wind Direction	Wave Ht (m)	Sea State	Baro Pressure	Air Temp		Sea Surface Temp	Humidity (%)	Prob of Rain (%)	Sea State	Wave Ht (m)
							Max	Min					
08-05-24	0001	10	WNW	1.2	3	1011	32	23	29	88%	32% (0.6 mm)	0	0
	0600	12	ENE	1.2	3	1010			28	97%	56% (5.6 mm)	1	0 - 0.1
	1200	10	WNW	1.0	3	1011			29	75%	60% (5.2 mm)	2	0.1 - 0.5
	1800	8	NW	1.0	3	1007			29	86%	38% (2.1 mm)	3	0.5 - 1.25
09-05-24	0001	9	WNW	0.9	3	1010	33	23	29	88%	25% (0.5 mm)	4	1.25 - 2.5
	0600	6	NNW	0.8	3	1009			28	97%	16% (0.0 mm)	5	2.5 - 4.0
	1200	7	WSW	0.8	3	1010			29	76%	18% (0.0 mm)	6	4.0 - 6.0
	1800	13	W	0.9	3	1007			29	88%	14% (0.0 mm)	7	6.0 - 9.0
10-05-24	0001	6	NW	0.8	3	1010	33	23	29	85%	15% (0.0 mm)	8	9.0 - 14.0
	0600	5	NW	0.8	3	1010			28	98%	18% (0.0 mm)	9	Over 14.0
	1200	10	W	0.9	3	1011			29	77%	16% (0.0 mm)		
	1800	9	WSW	0.8	3	1007			29	88%	14% (0.0 mm)		
11-05-24	0001	7	W	0.7	3	1010	33	23	29	85%	14% (0.0 mm)		
	0600	8	SW	0.8	3	1010			28	97%	18% (0.0 mm)		
	1200	6	SW	0.7	3	1011			29	76%	17% (0.0 mm)		
	1800	5	WSW	0.7	3	1007			29	87%	16% (0.0 mm)		



MARINE WEATHER FORECAST- 20 NM WEST OF ELEPHANT POINT (Lat 21° 10' N, Long 091° 42' E)

DATE : 08 to 15 May 2024

Date	Time	Max Wind Spd (kts)	Wind Direction	Wave Ht (m)	Sea State	Baro Pressure	Air Temp		Sea Surface Temp	Humidity (%)	Prob of Rain (%)	Sea State	Wave Ht (m)
							Max	Min					
12-05-24	0001	5	S	1.0	3	1010	33	24	29	87%	15% (0.0 mm)	0	0
	0600	8	SSE	1.0	3	1010			28	96%	18% (0.0 mm)	1	0 - 0.1
	1200	9	WNW	0.9	3	1012			29	78%	17% (0.0 mm)	2	0.1 - 0.5
	1800	10	SW	1.0	3	1008			28	87%	16% (0.0 mm)	3	0.5 - 1.25
13-05-24	0001	6	WSW	0.9	3	1010	33	24	29	85%	12% (0.0 mm)	4	1.25 - 2.5
	0600	7	SSE	0.9	3	1009			28	98%	14% (0.0 mm)	5	2.5 - 4.0
	1200	10	WSW	1.0	3	1010			29	76%	16% (0.0 mm)	6	4.0 - 6.0
	1800	11	NW	1.0	3	1007			28	85%	19% (0.0 mm)	7	6.0 - 9.0
14-05-24	0001	7	SW	0.9	3	1010	33	24	29	84%	18% (0.0 mm)	8	9.0 - 14.0
	0600	6	SW	0.9	3	1010			28	94%	17% (0.0 mm)	9	Over 14.0
	1200	8	SSW	0.9	3	1011			29	76%	16% (0.0 mm)		
	1800	13	SSW	1.0	3	1007			28	85%	16% (0.0 mm)		
15-05-24	0001	7	SW	0.9	3	1010	33	24	29	82%	13% (0.0 mm)		
	0600	8	SSE	0.9	3	1010			28	94%	15% (0.0 mm)		
	1200	9	SW	0.9	3	1011			29	75%	14% (0.0 mm)		
	1800	12	SSW	1.0	3	1007			28	83%	15% (0.0 mm)		

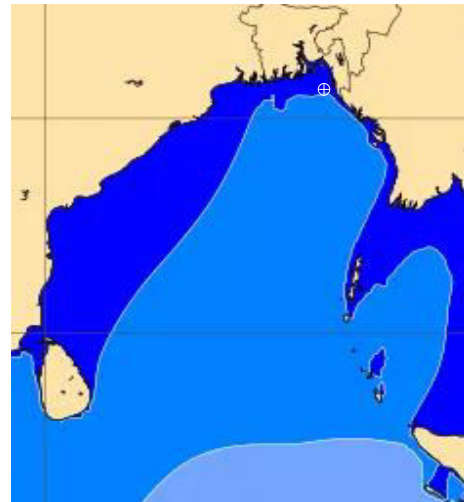
12 May 24 Sun (Probability 70%)



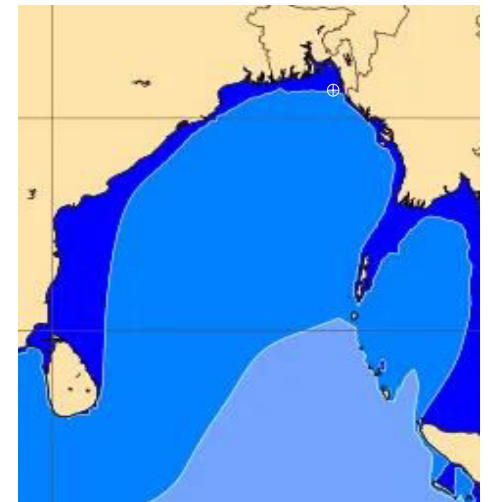
13 May 24 Mon (Probability 60%)



14 May 24 Tue (Probability 50%)



15 May 24 Wed (Probability 50%)



0 0.5 1 2 3 4 6 8 10 12 14 20

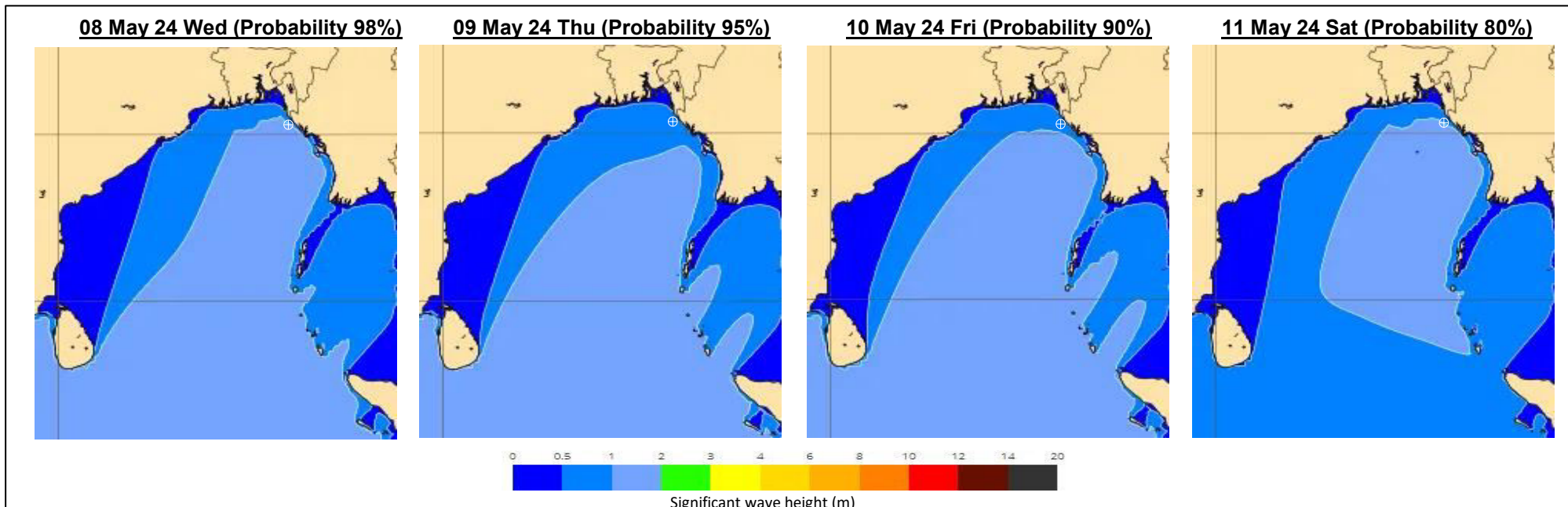


Significant wave height (m)

MARINE WEATHER FORECAST- 15 NM WEST OF ST. MARTIN'S LIGHT HOUSE (Lat 20° 37' N, Long 092° 03' E)

DATE : 08 to 15 May 2024

Date	Time	Max Wind Spd (kts)	Wind Direction	Wave Ht (m)	Sea State	Baro Pressure	Air Temp		Sea Surface Temp	Humidity (%)	Prob of Rain(%)	Sea State	Wave Ht (m)
							Max	Min					
08-05-24	0001	12	WNW	1.5	4	1011	32	23	29	87%	16% (0.0 mm)	0	0
	0600	6	NNW	1.4	4	1010			28	98%	17% (0.0 mm)	1	0 - 0.1
	1200	11	WNW	1.4	4	1011			29	76%	18% (0.0 mm)	2	0.1 - 0.5
	1800	9	NW	1.3	4	1007			29	87%	15% (0.0 mm)	3	0.5 - 1.25
09-05-24	0001	11	NW	1.3	4	1009	32	23	29	85%	14% (0.0 mm)	4	1.25 - 2.5
	0600	8	NW	1.2	3	1009			28	98%	16% (0.0 mm)	5	2.5 - 4.0
	1200	10	WSW	1.2	3	1010			29	76%	15% (0.0 mm)	6	4.0 - 6.0
	1800	11	WSW	1.2	3	1007			29	87%	14% (0.0 mm)	7	6.0 - 9.0
10-05-24	0001	9	NW	1.0	3	1010	32	23	29	84%	17% (0.0 mm)	8	9.0 - 14.0
	0600	5	W	1.0	3	1009			28	95%	15% (0.0 mm)	9	Over 14.0
	1200	8	W	1.0	3	1010			29	78%	14% (0.0 mm)		
	1800	12	W	1.1	3	1007			29	87%	16% (0.0 mm)		
11-05-24	0001	12	WNW	1.1	3	1010	33	23	29	85%	15% (0.0 mm)		
	0600	7	NW	1.0	3	1009			28	97%	14% (0.0 mm)		
	1200	9	NW	1.0	3	1010			29	76%	16% (0.0 mm)		
	1800	8	WSW	1.0	3	1007			29	88%	12% (0.0 mm)		

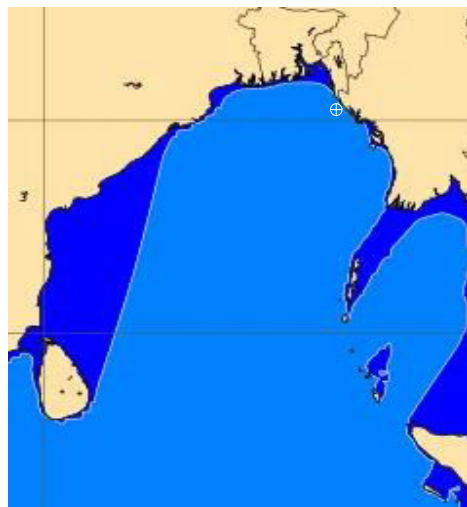


MARINE WEATHER FORECAST- 15 NM WEST OF ST. MARTIN'S LIGHT HOUSE (Lat 20° 37' N, Long 092° 03' E)

DATE : 08 to 15 May 2024

Date	Time	Max Wind Spd (kts)	Wind Direction	Wave Ht (m)	Sea State	Baro Pressure	Air Temp		Sea Surface Temp	Humidity (%)	Prob of Rain (%)	Sea State	Wave Ht (m)
							Max	Min					
12-05-24	0001	13	NW	1.1	3	1010	33	23	29	82%	15% (0.0 mm)	0	0
	0600	9	WNW	1.0	3	1009			28	94%	14% (0.0 mm)	1	0 - 0.1
	1200	7	NW	1.0	3	1011			29	76%	16% (0.0 mm)	2	0.1 - 0.5
	1800	6	WSW	1.0	3	1008			28	85%	12% (0.0 mm)	3	0.5 - 1.25
13-05-24	0001	8	NW	1.0	3	1009	33	23	29	87%	14% (0.0 mm)	4	1.25 - 2.5
	0600	10	WSW	1.0	3	1008			28	94%	11% (0.0 mm)	5	2.5 - 4.0
	1200	5	SW	0.9	3	1010			29	75%	15% (0.0 mm)	6	4.0 - 6.0
	1800	11	WSW	0.9	3	1007			28	88%	12% (0.0 mm)	7	6.0 - 9.0
14-05-24	0001	9	WSW	0.9	3	1009	34	24	29	84%	16% (0.0 mm)	8	9.0 - 14.0
	0600	8	NNW	0.9	3	1010			28	97%	18% (0.0 mm)	9	Over 14.0
	1200	12	NW	1.0	3	1010			29	75%	17% (0.0 mm)		
	1800	11	WSW	1.0	3	1007			28	87%	16% (0.0 mm)		
15-05-24	0001	9	SW	0.9	3	1009	34	24	29	86%	15% (0.0 mm)		
	0600	10	NNW	0.9	3	1010			28	97%	14% (0.0 mm)		
	1200	8	NW	0.9	3	1010			29	75%	16% (0.0 mm)		
	1800	7	WSW	0.9	3	1007			28	88%	12% (0.0 mm)		

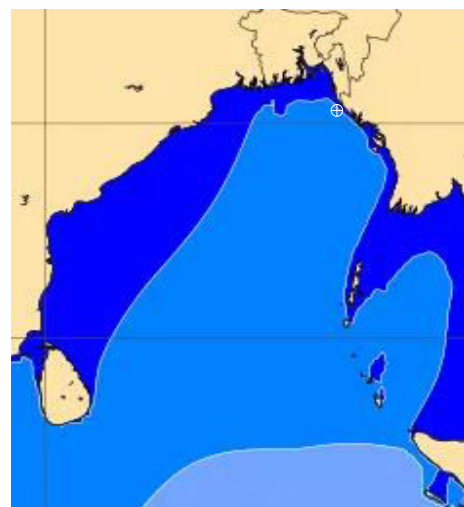
12 May 24 Sun (Probability 70%)



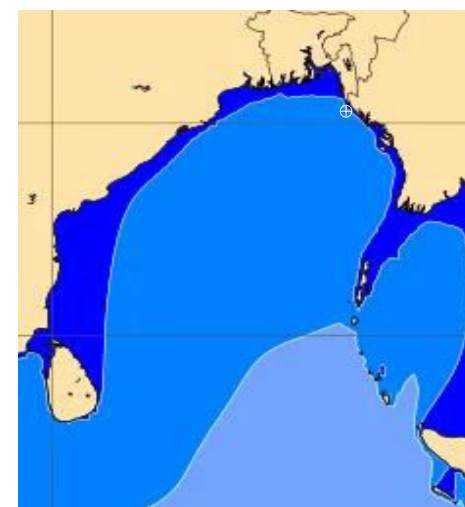
13 May 24 Mon (Probability 60%)



14 May 24 Tue (Probability 50%)



15 May 24 Wed (Probability 50%)



0 0.5 1 2 3 4 6 8 10 12 14 20



Significant wave height (m)

MARINE WEATHER FORECAST- 40 NM ESE OF PAYRA FAIRWAY (Lat 21° 07' N, Long 090° 45' E)

DATE : 08 to 15 May 2024

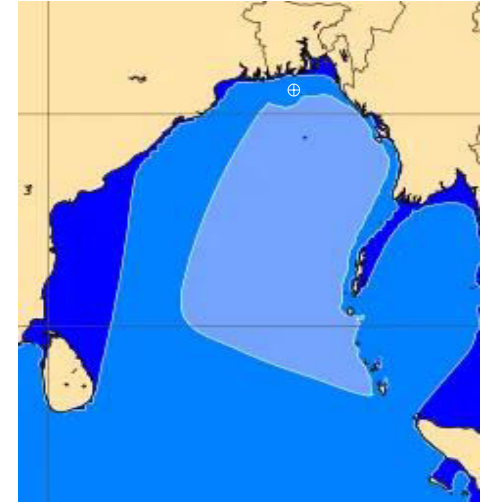
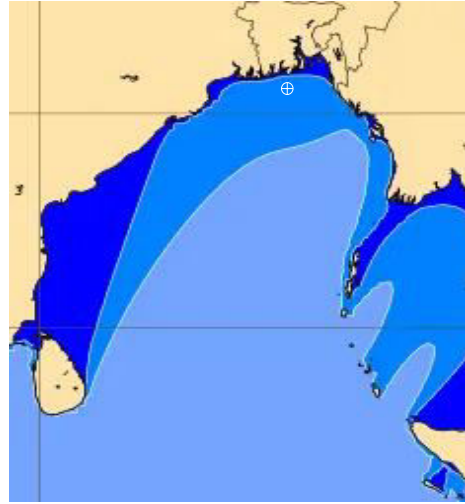
Date	Time	Max Wind Spd (kts)	Wind Direction	Wave Ht (m)	Sea State	Baro Pressure	Air Temp		Sea Surface Temp	Humidity (%)	Prob of Rain (%)	Sea State	Wave Ht (m)
							Max	Min					
08-05-24	0001	8	WSW	1.5	4	1011	32	23	29	88%	34% (1.2 mm)	0	0
	0600	6	SSW	1.5	4	1010			28	97%	52% (2.6 mm)	1	0 - 0.1
	1200	9	W	1.4	4	1011			29	75%	59% (3.5 mm)	2	0.1 - 0.5
	1800	8	WSW	1.3	4	1007			29	86%	32% (0.8 mm)	3	0.5 - 1.25
09-05-24	0001	9	WSW	1.2	3	1009	32	23	29	85%	26% (0.5 mm)	4	1.25 - 2.5
	0600	10	WSW	1.3	4	1009			28	94%	16% (0.0 mm)	5	2.5 - 4.0
	1200	7	SW	1.2	3	1010			29	78%	12% (0.0 mm)	6	4.0 - 6.0
	1800	12	W	1.3	4	1008			29	85%	15% (0.0 mm)	7	6.0 - 9.0
10-05-24	0001	8	WSW	1.1	3	1010	33	24	29	86%	14% (0.0 mm)	8	9.0 - 14.0
	0600	9	SW	1.1	3	1009			28	97%	11% (0.0 mm)	9	Over 14.0
	1200	8	SW	1.1	3	1011			29	75%	15% (0.0 mm)		
	1800	10	SSW	1.2	3	1007			29	86%	12% (0.0 mm)		
11-05-24	0001	11	WSW	1.2	3	1010	33	24	29	87%	14% (0.0 mm)		
	0600	12	SW	1.2	3	1009			28	98%	16% (0.0 mm)		
	1200	9	SW	1.0	3	1011			29	76%	12% (0.0 mm)		
	1800	10	SSW	1.1	3	1007			29	88%	14% (0.0 mm)		

08 May 24 Wed (Probability 98%)

09 May 24 Thu (Probability 95%)

10 May 24 Fri (Probability 90%)

11 May 24 Sat (Probability 80%)



Significant wave height (m)

MARINE WEATHER FORECAST- 40 NM ESE OF PAYRA FAIRWAY (Lat 21° 07' N, Long 090° 45' E)

DATE : 08 to 15 May 2024

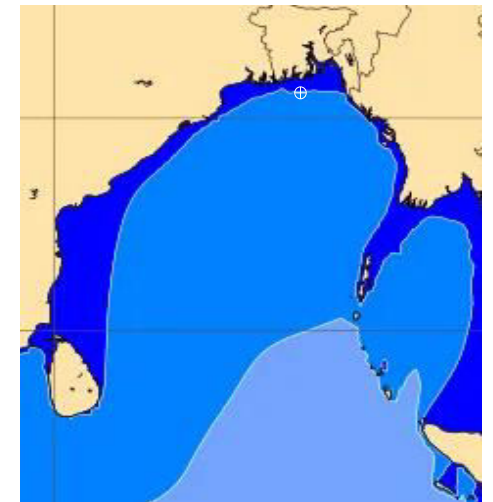
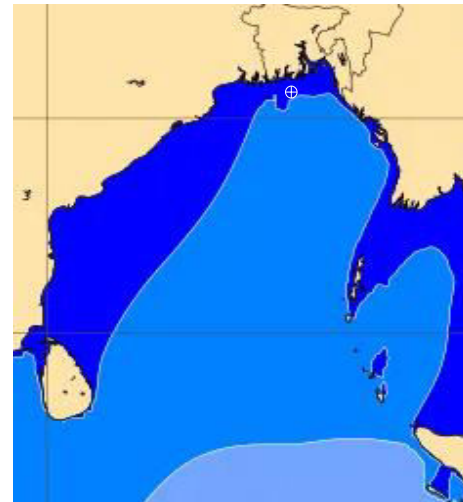
Date	Time	Max Wind Spd (kts)	Wind Direction	Wave Ht (m)	Sea State	Baro Pressure	Air Temp		Sea Surface Temp	Humidity (%)	Prob of Rain (%)	Sea State	Wave Ht (m)
							Max	Min					
12-05-24	0001	13	SW	1.2	3	1010	33	24	29	88%	15% (0.0 mm)	0	0
	0600	9	SW	1.1	3	1009			28	97%	18% (0.0 mm)	1	0 - 0.1
	1200	10	WSW	1.1	3	1010			30	75%	17% (0.0 mm)	2	0.1 - 0.5
	1800	7	SSW	1.0	3	1007			29	86%	14% (0.0 mm)	3	0.5 - 1.25
13-05-24	0001	11	WSW	1.0	3	1009	33	24	29	85%	15% (0.0 mm)	4	1.25 - 2.5
	0600	8	SW	1.0	3	1010			28	98%	13% (0.0 mm)	5	2.5 - 4.0
	1200	9	WSW	1.0	3	1011			30	76%	15% (0.0 mm)	6	4.0 - 6.0
	1800	10	SW	1.0	3	1007			29	88%	14% (0.0 mm)	7	6.0 - 9.0
14-05-24	0001	9	WSW	1.0	3	1009	33	24	29	85%	15% (0.0 mm)	8	9.0 - 14.0
	0600	10	SW	1.1	3	1010			28	95%	16% (0.0 mm)	9	Over 14.0
	1200	11	WSW	1.1	3	1011			30	78%	18% (0.0 mm)		
	1800	13	SSW	1.1	3	1007			29	87%	17% (0.0 mm)		
15-05-24	0001	10	SW	1.1	3	1009	33	24	29	85%	12% (0.0 mm)		
	0600	9	SW	1.0	3	1010			28	97%	15% (0.0 mm)		
	1200	10	WSW	1.1	3	1011			30	76%	14% (0.0 mm)		
	1800	14	SSW	1.1	3	1007			29	88%	16% (0.0 mm)		

12 May 24 Sun (Probability 70%)

13 May 24 Mon (Probability 60%)

14 May 24 Tue (Probability 50%)

15 May 24 Wed (Probability 50%)



0 0.5 1 2 3 4 6 8 10 12 14 20

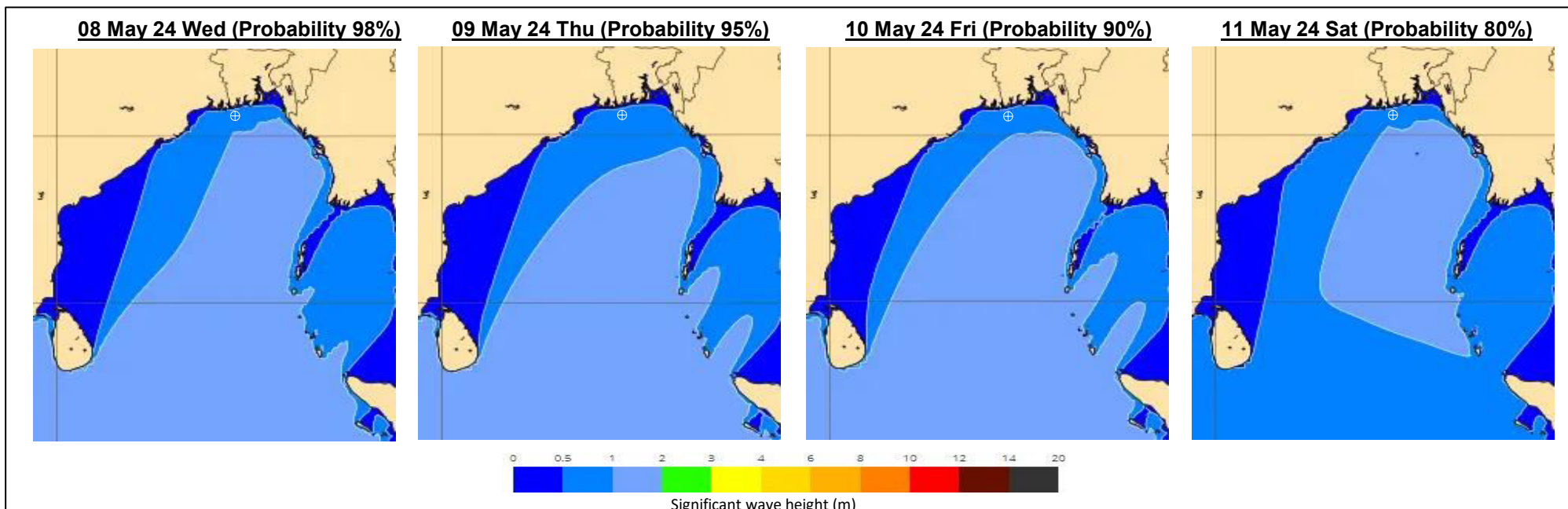


Significant wave height (m)

MARINE WEATHER FORECAST- 10 NM SOUTH OF MONGLA FAIRWAY (Lat 21° 16' N, Long 089° 34' E)

DATE : 08 to 15 May 2024

Date	Time	Max Wind Spd (kts)	Wind Direction	Wave Ht (m)	Sea State	Baro Pressure	Air Temp		Sea Surface Temp	Humidity (%)	Prob of Rain (%)	Sea State	Wave Ht (m)
							Max	Min					
08-05-24	0001	14	W	1.5	4	1011	33	24	29	88%	45% (0.5 mm)	0	0
	0600	10	ESE	1.4	4	1010			29	98%	52% (3.5 mm)	1	0 - 0.1
	1200	11	SSW	1.4	4	1010			29	76%	60% (4.2 mm)	2	0.1 - 0.5
	1800	9	SW	1.3	4	1007			29	87%	24% (0.2 mm)	3	0.5 - 1.25
09-05-24	0001	13	SW	1.3	4	1009	33	24	29	84%	32% (0.3 mm)	4	1.25 - 2.5
	0600	8	WSW	1.2	3	1009			29	98%	16% (0.0 mm)	5	2.5 - 4.0
	1200	10	SW	1.3	4	1010			29	76%	13% (0.0 mm)	6	4.0 - 6.0
	1800	9	WSW	1.2	3	1006			29	85%	14% (0.0 mm)	7	6.0 - 9.0
10-05-24	0001	13	SW	1.3	4	1009	33	24	29	88%	15% (0.0 mm)	8	9.0 - 14.0
	0600	9	SSW	1.1	3	1009			29	97%	16% (0.0 mm)	9	Over 14.0
	1200	10	SSW	1.2	3	1010			29	76%	12% (0.0 mm)		
	1800	12	SW	1.2	3	1007			29	88%	14% (0.0 mm)		
11-05-24	0001	13	SSW	1.2	3	1009	33	24	29	87%	11% (0.0 mm)		
	0600	17	SSW	1.3	4	1009			29	98%	15% (0.0 mm)		
	1200	10	SW	1.2	3	1010			29	76%	16% (0.0 mm)		
	1800	14	SSW	1.3	4	1007			29	88%	17% (0.0 mm)		



MARINE WEATHER FORECAST- 10 NM SOUTH OF MONGLA FAIRWAY (Lat 21° 16' N, Long 089° 34' E)

DATE : 08 to 15 May 2024

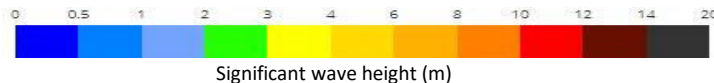
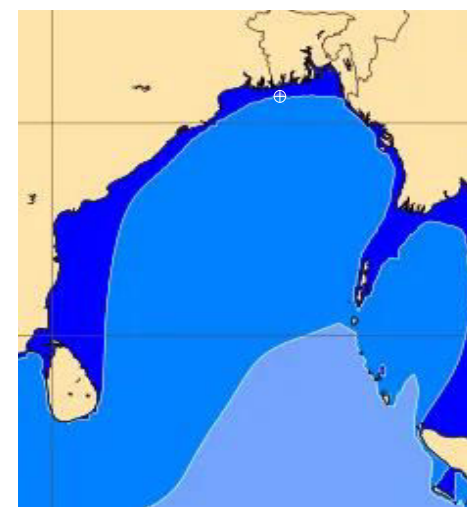
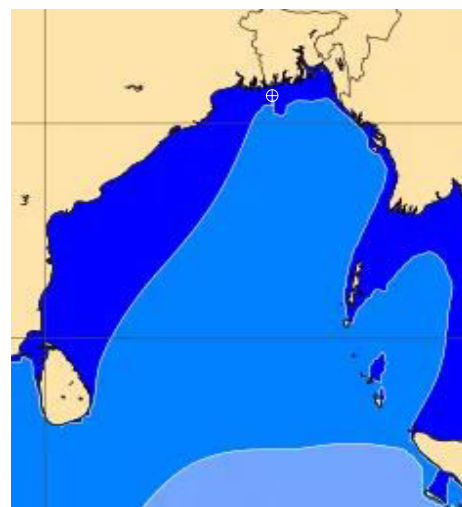
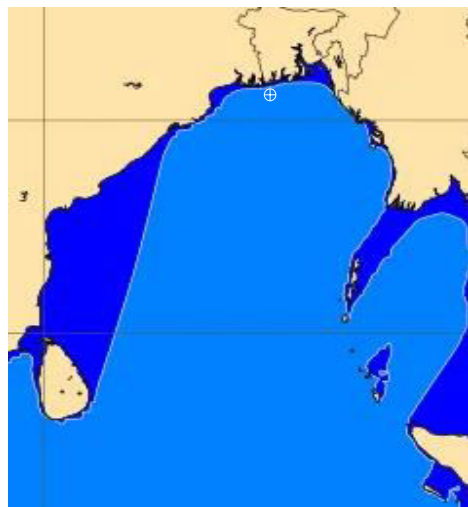
Date	Time	Max Wind Spd (kts)	W8nd Direction	Wave Ht (m)	Sea State	Baro Pressure	Air Temp		Sea Surface Temp	Humidity (%)	Prob of Rain (%)	Sea State	Wave Ht (m)
							Max	Min					
12-05-24	0001	15	SW	1.3	4	1010	33	24	29	85%	18% (0.0 mm)	0	0
	0600	13	WSW	1.2	3	1009			28	94%	17% (0.0 mm)	1	0 - 0.1
	1200	14	SW	1.3	4	1010			29	76%	16% (0.0 mm)	2	0.1 - 0.5
	1800	12	SSW	1.2	3	1007			29	83%	18% (0.0 mm)	3	0.5 - 1.25
13-05-24	0001	15	SW	1.3	4	1010	33	24	29	84%	17% (0.0 mm)	4	1.25 - 2.5
	0600	16	SW	1.3	4	1008			28	95%	14% (0.0 mm)	5	2.5 - 4.0
	1200	17	WSW	1.3	4	1010			29	76%	15% (0.0 mm)	6	4.0 - 6.0
	1800	14	SSW	1.2	3	1007			29	88%	16% (0.0 mm)	7	6.0 - 9.0
14-05-24	0001	15	SW	1.3	4	1010	33	24	29	87%	12% (0.0 mm)	8	9.0 - 14.0
	0600	16	SSW	1.3	4	1008			28	98%	15% (0.0 mm)	9	Over 14.0
	1200	18	WSW	1.3	4	1010			29	77%	14% (0.0 mm)		
	1800	17	SW	1.3	4	1007			29	86%	16% (0.0 mm)		
15-05-24	0001	14	SW	1.2	2	1010	33	24	29	88%	15% (0.0 mm)		
	0600	15	SSW	1.3	4	1008			28	97%	13% (0.0 mm)		
	1200	12	WSW	1.2	3	1010			29	76%	15% (0.0 mm)		
	1800	13	SSW	1.2	3	1007			29	88%	18% (0.0 mm)		

12 May 24 Sun (Probability 70%)

13 May 24 Mon (Probability 60%)

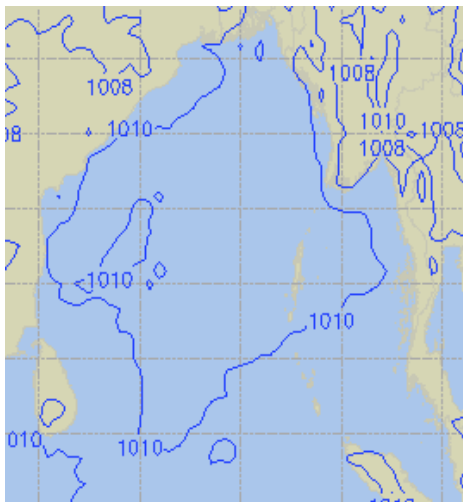
14 May 24 Tue (Probability 50%)

15 May 24 Wed (Probability 50%)

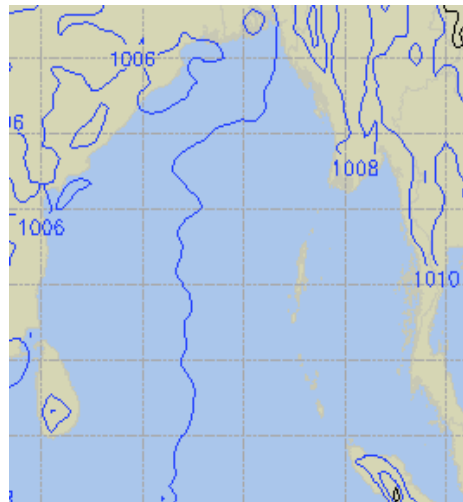


PREDICTED SURFACE PRESSURE FORECAST (08 to 14 May 2024)

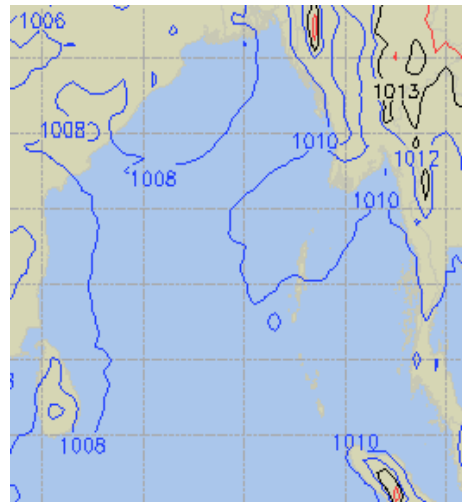
08 May 24 Wed (Probability 98%)



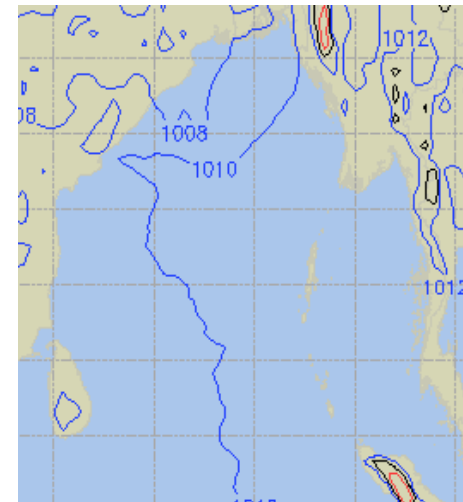
09 May 24 Thu (Probability 95%)



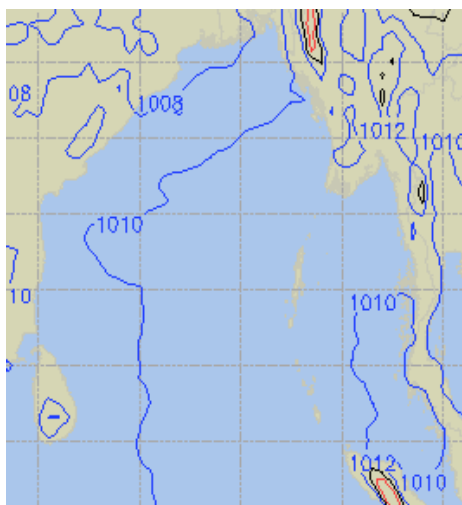
10 May 24 Fri (Probability 90%)



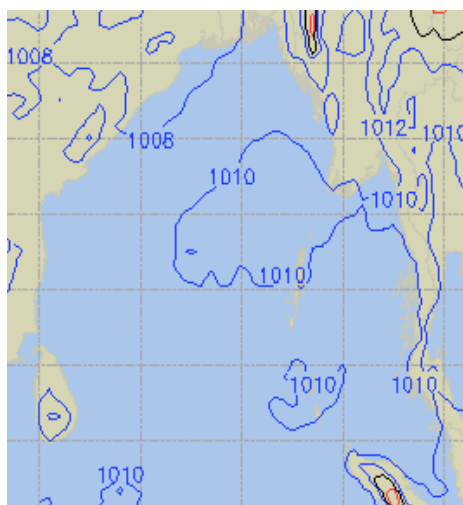
11 May 24 Sat (Probability 80%)



12 May 24 Sun (Probability 70%)



13 May 24 Mon (Probability 60%)



14 May 24 Tue (Probability 60%)

