



**SUMMARY OF MARINE WEATHER FORECAST**  
**COASTAL AREA OF BANGLADESH**  
**DATE: 10 to 17 Mar 2025**



Fleet forecast	Trough of low lies over West Bengal and adjoining area. Seasonal low lies over the South Bay.
Wind direction, speed	North/North-westerly 9 kts, (Temporary gusting up to 19 kts).
Wave height & sea state	Wave height: 0.1 to 1.2 m (Sea state:1 to 3).
Sea surface temperature	23°C - 28°C (May remain nearly unchanged).
Baro pressure	1008-1015 mb.
Rainfall	Partly cloudy sky over Bay of Bengal & adjoining area.
Fog	Light fog may occur over the coastal area during late night to early morning.

**Outlook for 10 to 17 Mar 2025:** Weather may remain dry with partly cloudy sky. Night and day temperature may rise.



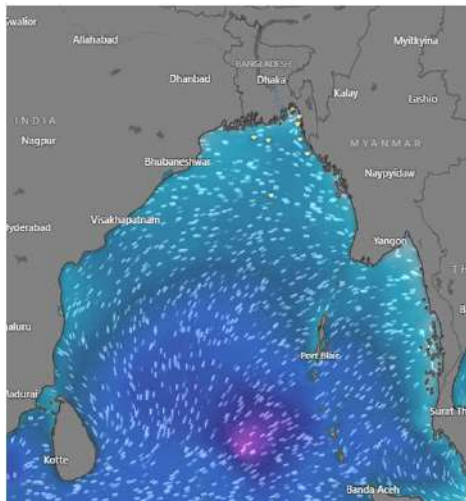
# MARINE WEATHER FORECAST (10 to 17 Mar 2025)

## PATENGA POINT (22° 12' N, 091° 38' E)

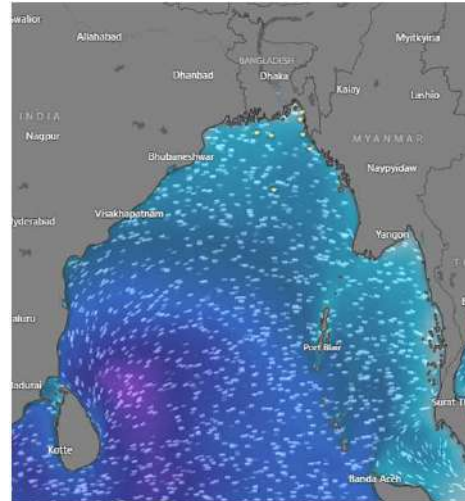


Date	Time	Air Temp (°C)		Sea Surface Temp (°C)	Baro Pressure (mbar)	Wind Direction	Wind Spd (kts)		Wave Ht (m)	Sea State	Humidity (%)	Prob of Rain (%)	Amount of Rain (mm)
		Max	Min				Gusting	Avg					
10-03-25 (Monday)	0001	32	20	24	1010	N	10	6	0.2	2	66	7	0.0
	0600			23	1015	NNE	12	7	0.2	2	78	9	0.0
	1200			27	1011	NNW	10	5	0.1	1	36	3	0.0
	1800			25	1012	NNW	12	7	0.2	2	47	5	0.0
11-03-25 (Tuesday)	0001	32	21	24	1010	N	10	6	0.2	2	63	8	0.0
	0600			23	1015	NNE	9	5	0.2	2	73	9	0.0
	1200			27	1011	NW	14	10	0.2	2	43	2	0.0
	1800			25	1012	W	16	9	0.3	2	60	5	0.0
12-03-25 (Wednesday)	0001	31	21	24	1009	W	13	7	0.3	2	84	8	0.0
	0600			23	1012	SE	7	4	0.2	2	88	9	0.0
	1200			27	1010	SSW	14	9	0.2	2	61	2	0.0
	1800			25	1011	SSW	15	7	0.3	2	85	5	0.0
13-03-25 (Thursday)	0001	31	22	24	1009	SSE	15	10	0.4	2	95	6	0.0
	0600			23	1012	SSE	14	10	0.3	2	99	8	0.0
	1200			27	1010	SSW	18	14	0.4	2	73	2	0.0
	1800			25	1011	SSW	17	13	0.4	2	91	7	0.0

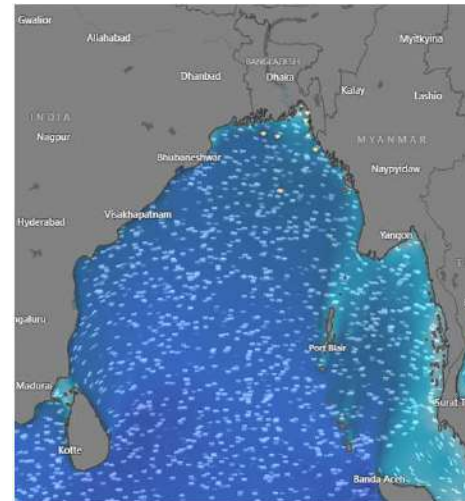
**10 Mar 2025**



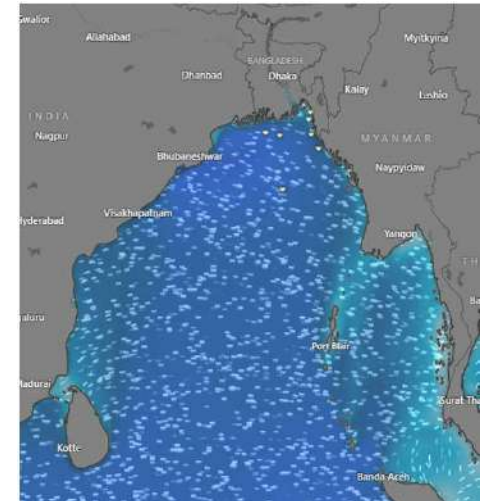
**11 Mar 2025**



**12 Mar 2025**



**13 Mar 2025**



Significant wave height (m)



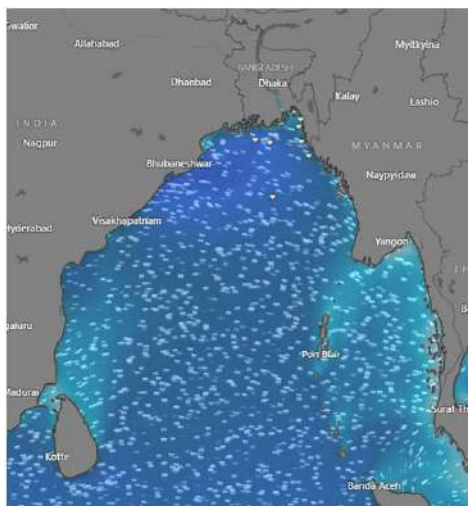
# MARINE WEATHER FORECAST (10 to 17 Mar 2025)

## PATENGA POINT (22° 12' N, 091° 38' E)

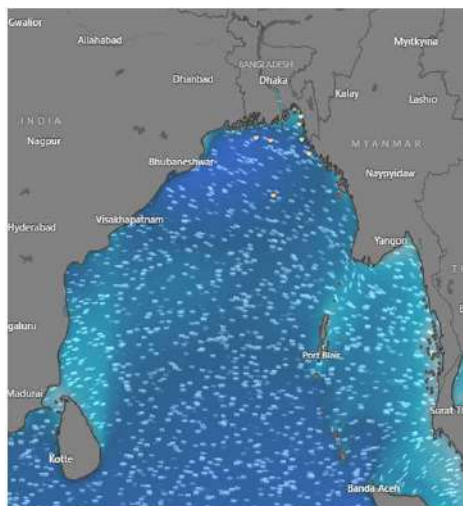


Date	Time	Air Temp (°C)		Sea Surface Temp (°C)	Baro Pressure (mbar)	Wind Direction	Wind Spd (kts)		Wave Ht (m)	Sea State	Humidity (%)	Prob of Rain (%)	Amount of Rain (mm)
		Max	Min				Gusting	Avg					
14-03-25 (Friday)	0001	31	22	25	1008	S	17	12	0.4	2	99	8	0.0
	0600			24	1012	SSE	16	11	0.4	2	97	9	0.0
	1200			27	1009	SSW	17	13	0.4	2	74	3	0.0
	1800			25	1011	SSW	15	8	0.4	2	93	5	0.0
15-03-25 (Saturday)	0001	31	22	25	1008	S	14	11	0.4	2	99	6	0.0
	0600			24	1012	SSE	16	11	0.4	2	98	7	0.0
	1200			27	1009	SW	15	9	0.4	2	76	3	0.0
	1800			25	1011	SW	13	8	0.4	2	92	5	0.0
16-03-25 (Sunday)	0001	31	22	25	1008	SSW	13	9	0.3	2	99	7	0.0
	0600			24	1012	SSE	12	7	0.2	2	98	9	0.0
	1200			27	1009	SSW	12	6	0.2	2	74	3	0.0
	1800			25	1011	SSW	13	8	0.3	2	91	6	0.0
17-03-25 (Monday)	0001	31	22	25	1008	S	12	8	0.3	2	99	7	0.0
	0600			24	1012	SSE	11	6	0.2	2	95	9	0.0
	1200			27	1009	SSW	12	7	0.3	2	74	3	0.0
	1800			25	1011	SSW	14	10	0.3	2	92	6	0.0

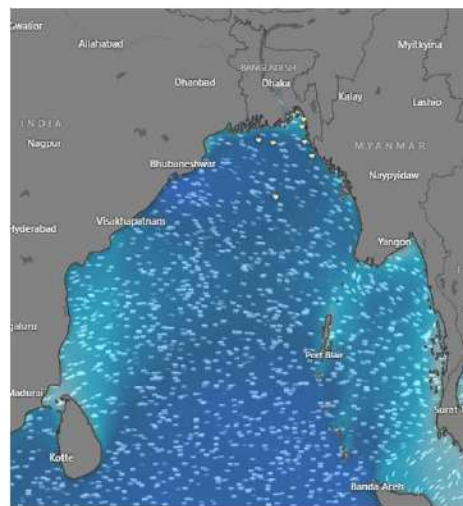
**14 Mar 2025**



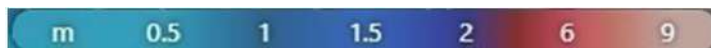
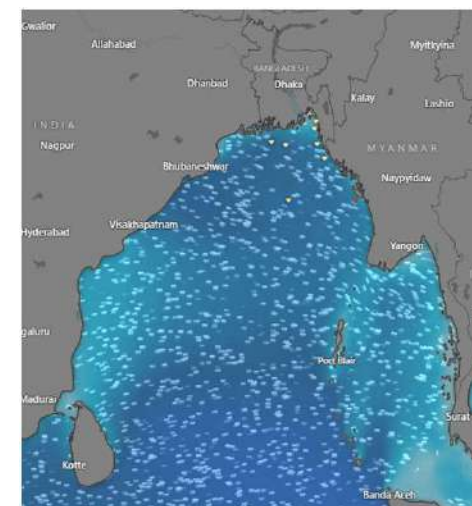
**15 Mar 2025**



**16 Mar 2025**



**17 Mar 2025**



Significant wave height (m)



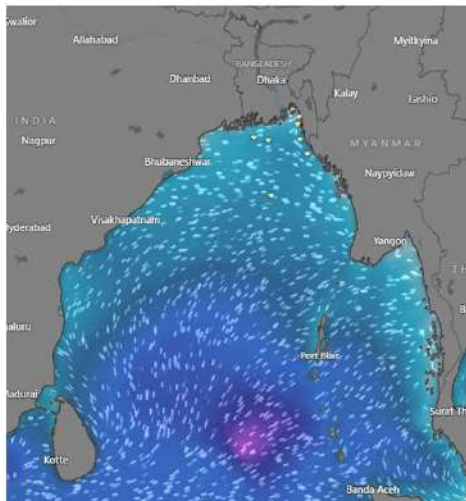
# MARINE WEATHER FORECAST (10 to 17 Mar 2025)

## ABEAM TO KUTUBDIA (21° 51' N, 091° 40' E)

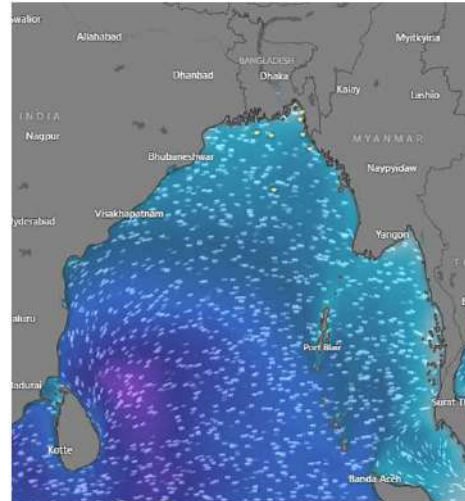


Date	Time	Air Temp (°C)		Sea Surface Temp (°C)	Baro Pressure (mbar)	Wind Direction	Wind Spd (kts)		Wave Ht (m)	Sea State	Humidity (%)	Prob of Rain (%)	Amount of Rain (mm)
		Max	Min				Gusting	Avg					
10-03-25 (Monday)	0001	32	21	24	1010	N	14	10	0.3	2	68	7	0.0
	0600			23	1015	NNE	15	11	0.3	2	75	9	0.0
	1200			27	1012	NNW	12	6	0.3	2	34	3	0.0
	1800			25	1013	NNW	13	10	0.3	2	46	5	0.0
11-03-25 (Tuesday)	0001	32	21	24	1010	N	14	10	0.3	2	65	8	0.0
	0600			23	1015	NNE	11	5	0.3	2	72	9	0.0
	1200			27	1012	NW	11	9	0.2	2	46	4	0.0
	1800			25	1013	W	15	12	0.3	2	61	6	0.0
12-03-25 (Wednesday)	0001	31	21	24	1010	NW	16	9	0.3	2	84	7	0.0
	0600			23	1015	SSE	8	5	0.3	2	88	9	0.0
	1200			27	1012	SSW	11	9	0.3	2	61	3	0.0
	1800			25	1013	SSW	12	9	0.4	2	85	5	0.0
13-03-25 (Thursday)	0001	31	21	24	1010	S	16	12	0.4	2	94	8	0.0
	0600			23	1015	S	14	10	0.4	2	97	9	0.0
	1200			27	1012	SSW	16	14	0.5	2	72	3	0.0
	1800			25	1013	SSW	18	15	0.5	2	93	7	0.0

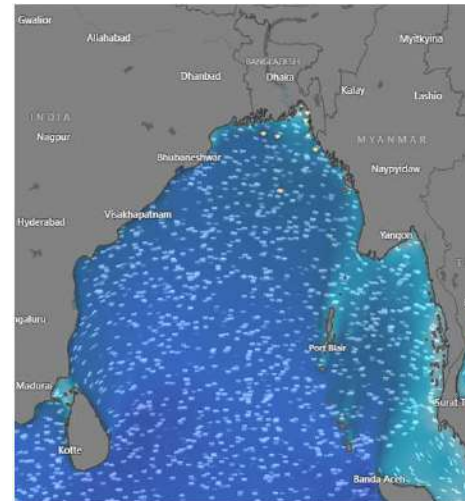
**10 Mar 2025**



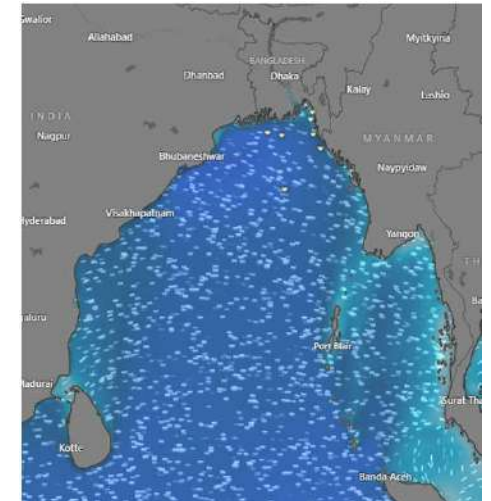
**11 Mar 2025**



**12 Mar 2025**



**13 Mar 2025**



Significant wave height (m)



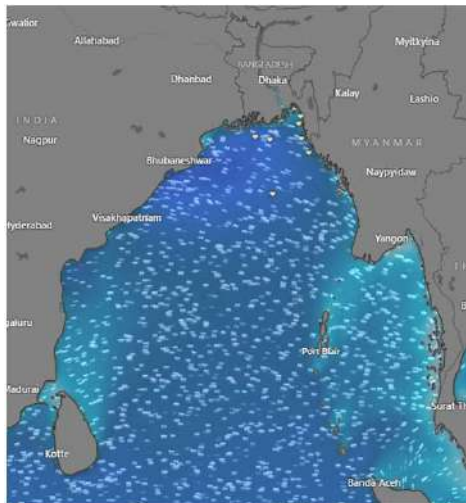
# MARINE WEATHER FORECAST (10 to 17 Mar 2025)

## ABEAM TO KUTUBDIA (21° 51' N, 091° 40' E)

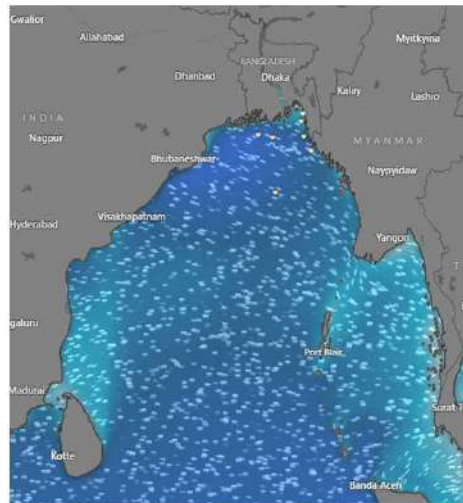


Date	Time	Air Temp (°C)		Sea Surface Temp (°C)	Baro Pressure (mbar)	Wind Direction	Wind Spd (kts)		Wave Ht (m)	Sea State	Humidity (%)	Prob of Rain (%)	Amount of Rain (mm)
		Max	Min				Gusting	Avg					
14-03-25 (Friday)	0001	31	21	24	1009	SSW	15	13	0.4	2	98	8	0.0
	0600			23	1012	SE	16	14	0.4	2	99	9	0.0
	1200			27	1010	SW	12	13	0.4	2	75	3	0.0
	1800			25	1011	SSW	15	9	0.4	2	91	7	0.0
15-03-25 (Saturday)	0001	31	21	24	1009	SSW	14	13	0.4	2	99	8	0.0
	0600			23	1012	SE	15	14	0.4	2	98	9	0.0
	1200			27	1010	SSW	12	8	0.3	2	76	4	0.0
	1800			25	1011	SSW	14	9	0.4	2	92	7	0.0
16-03-25 (Sunday)	0001	31	22	24	1009	SSW	13	9	0.4	2	99	8	0.0
	0600			23	1012	S	12	8	0.3	2	98	9	0.0
	1200			27	1010	S	12	7	0.3	2	74	3	0.0
	1800			25	1011	SSW	13	8	0.4	2	92	7	0.0
17-03-25 (Monday)	0001	31	22	24	1009	SSW	14	9	0.4	2	99	8	0.0
	0600			23	1012	SSE	12	7	0.3	2	96	9	0.0
	1200			27	1010	S	11	8	0.3	2	76	4	0.0
	1800			25	1011	SSW	14	7	0.4	2	93	6	0.0

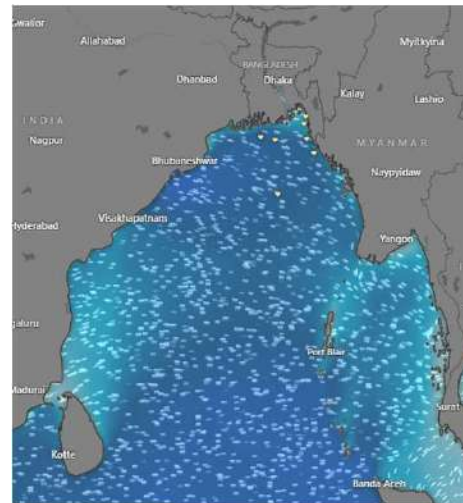
**14 Mar 2025**



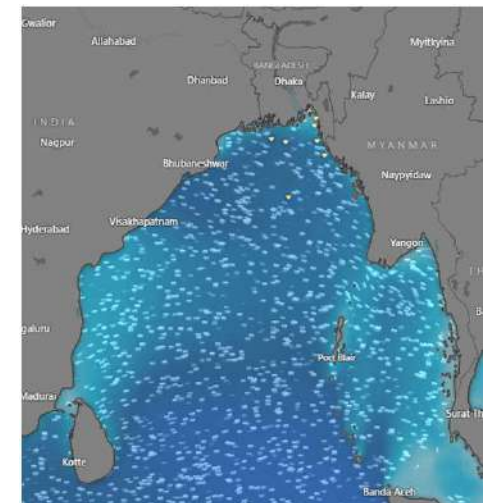
**15 Mar 2025**



**16 Mar 2025**



**17 Mar 2025**



Significant wave height (m)

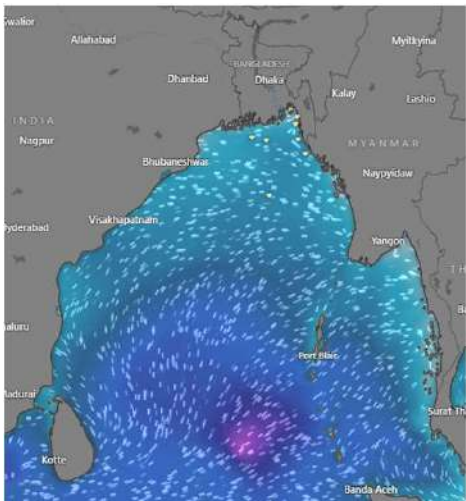


# MARINE WEATHER FORECAST (10 to 17 Mar 2025) ABEAM TO ELEPHANT POINT (21° 11' N, 091° 52' E)

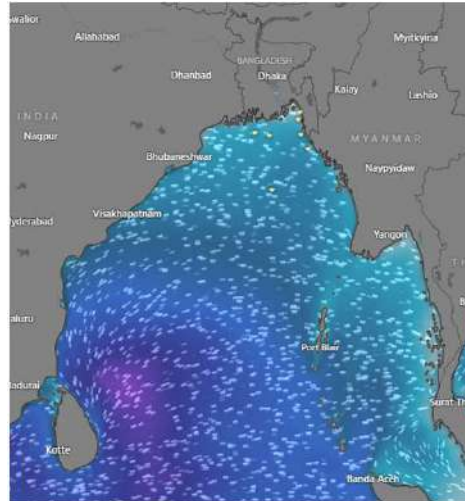


Date	Time	Air Temp (°C)		Sea Surface Temp (°C)	Baro Pressure (mbar)	Wind Direction	Wind Spd (kts)		Wave Ht (m)	Sea State	Humidity (%)	Prob of Rain (%)	Amount of Rain (mm)
		Max	Min				Gusting	Avg					
10-03-25 (Monday)	0001	32	20	24	1010	N	13	10	0.6	3	72	8	0.0
	0600			23	1015	N	15	12	0.6	3	79	9	0.0
	1200			27	1012	NNW	13	10	0.6	3	36	3	0.0
	1800			25	1013	NNW	16	12	0.6	3	56	5	0.0
11-03-25 (Tuesday)	0001	32	21	24	1010	N	14	11	0.6	3	74	7	0.0
	0600			23	1014	NNW	13	9	0.6	3	70	9	0.0
	1200			27	1011	NW	12	9	0.5	2	40	3	0.0
	1800			25	1012	NW	17	14	0.6	3	72	6	0.0
12-03-25 (Wednesday)	0001	31	22	24	1010	NW	16	10	0.7	3	92	7	0.0
	0600			23	1013	NE	6	3	0.6	3	89	8	0.0
	1200			27	1010	SSW	7	5	0.6	3	60	4	0.0
	1800			25	1012	SW	11	9	0.7	3	85	9	0.0
13-03-25 (Thursday)	0001	31	22	24	1009	SSW	11	8	0.8	3	99	7	0.0
	0600			23	1013	SSE	12	10	0.9	3	97	9	0.0
	1200			27	1010	SSW	11	9	0.9	3	73	2	0.0
	1800			25	1012	SSW	15	8	0.9	3	94	7	0.0

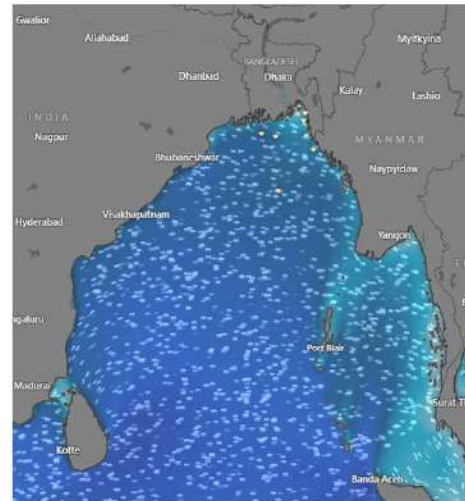
**10 Mar 2025**



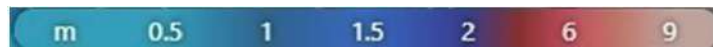
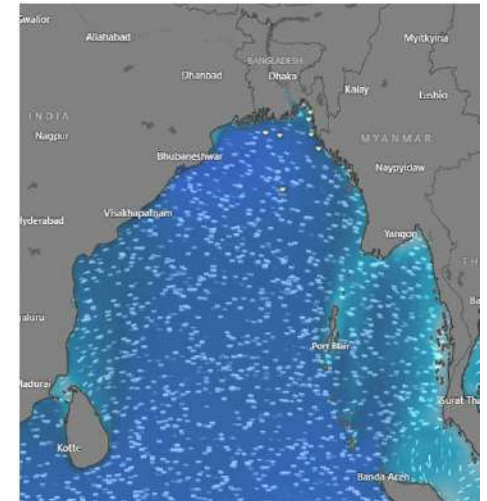
**11 Mar 2025**



**12 Mar 2025**



**13 Mar 2025**



Significant wave height (m)

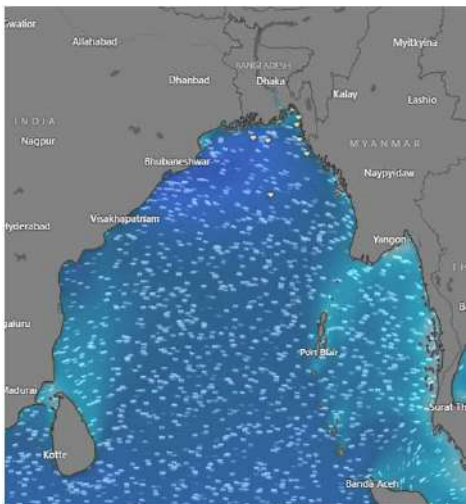


# MARINE WEATHER FORECAST (10 to 17 Mar 2025) ABEAM TO ELEPHANT POINT (21° 11' N, 091° 52' E)

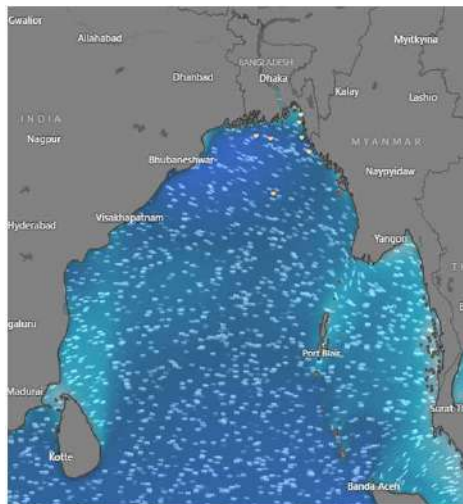


Date	Time	Air Temp (°C)		Sea Surface Temp (°C)	Baro Pressure (mbar)	Wind Direction	Wind Spd (kts)		Wave Ht (m)	Sea State	Humidity (%)	Prob of Rain (%)	Amount of Rain (mm)
		Max	Min				Gusting	Avg					
14-03-25 (Friday)	0001	31	22	24	1008	S	14	10	1.2	3	99	7	0.0
	0600			23	1012	SSE	16	12	1.2	3	97	8	0.0
	1200			27	1009	SSW	14	9	1.1	3	74	2	0.0
	1800			25	1011	SSW	11	7	1.1	3	94	5	0.0
15-03-25 (Saturday)	0001	31	22	24	1008	S	14	11	1.1	3	99	8	0.0
	0600			23	1012	S	14	11	1.0	3	98	9	0.0
	1200			27	1009	S	10	6	1.0	3	76	3	0.0
	1800			25	1011	SSW	10	8	1.0	3	94	6	0.0
16-03-25 (Sunday)	0001	31	22	24	1008	SW	13	6	1.0	3	99	8	0.0
	0600			23	1012	SSE	8	4	0.9	3	99	9	0.0
	1200			27	1009	S	7	3	0.9	3	76	5	0.0
	1800			25	1011	SW	11	8	0.9	3	96	6	0.0
17-03-25 (Monday)	0001	31	22	24	1008	SW	13	6	0.8	3	99	8	0.0
	0600			23	1012	SE	8	5	0.8	3	98	9	0.0
	1200			27	1009	SSE	7	4	0.8	3	76	3	0.0
	1800			25	1011	SW	13	10	0.8	3	96	7	0.0

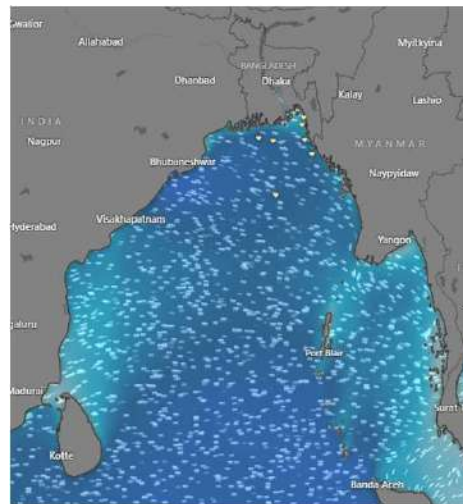
**14 Mar 2025**



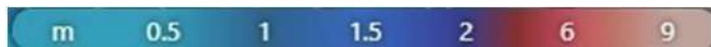
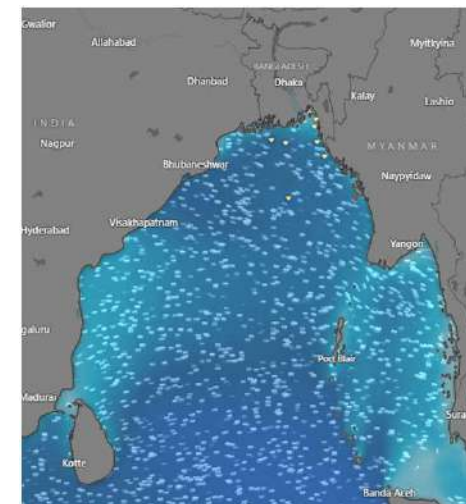
**15 Mar 2025**



**16 Mar 2025**



**17 Mar 2025**



Significant wave height (m)



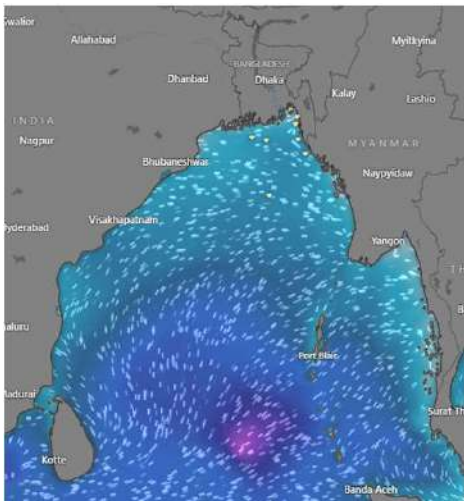
# MARINE WEATHER FORECAST (10 to 17 Mar 2025)

## ABEAM TO ST. MARTIN'S LIGHT HOUSE (20° 37' N, 092° 08' E)

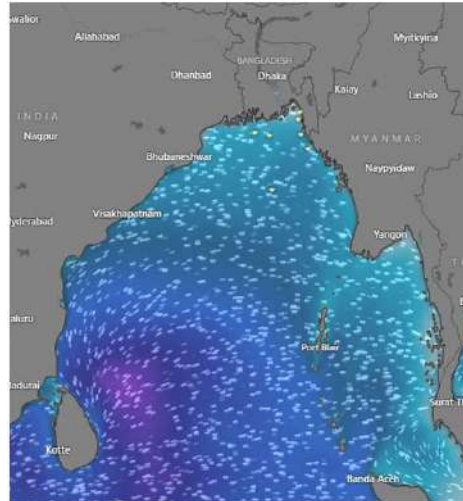


Date	Time	AirTemp (°C)		Sea Surface Temp (°C)	Baro Pressure (mbar)	Wind Direction	Wind Spd (kts)		Wave Ht (m)	Sea State	Humidity (%)	Prob of Rain (%)	Amount of Rain (mm)
		Max	Min				Gusting	Avg					
10-03-25 (Monday)	0001	32	20	25	1010	N	14	10	0.6	3	89	8	0.0
	0600			24	1015	N	15	11	0.6	3	90	9	0.0
	1200			28	1012	NNW	13	8	0.6	3	35	5	0.0
	1800			26	1013	NW	15	11	0.6	3	59	7	0.0
11-03-25 (Tuesday)	0001	32	21	25	1009	N	14	11	0.6	3	68	7	0.0
	0600			24	1014	NNW	13	10	0.6	3	71	9	0.0
	1200			28	1011	NW	9	8	0.6	3	43	2	0.0
	1800			26	1012	NW	17	12	0.7	3	73	6	0.0
12-03-25 (Wednesday)	0001	31	22	25	1009	NW	16	11	0.7	3	87	6	0.0
	0600			24	1014	NNW	9	5	0.7	3	89	9	0.0
	1200			28	1011	NW	8	7	0.8	3	61	3	0.0
	1800			26	1012	W	13	10	0.9	3	86	7	0.0
13-03-25 (Thursday)	0001	30	22	25	1009	W	12	7	0.9	3	97	5	0.0
	0600			24	1014	S	9	6	0.9	3	99	8	0.0
	1200			28	1011	SSW	10	8	1.0	3	76	2	0.0
	1800			26	1012	SSW	11	8	1.0	3	95	6	0.0

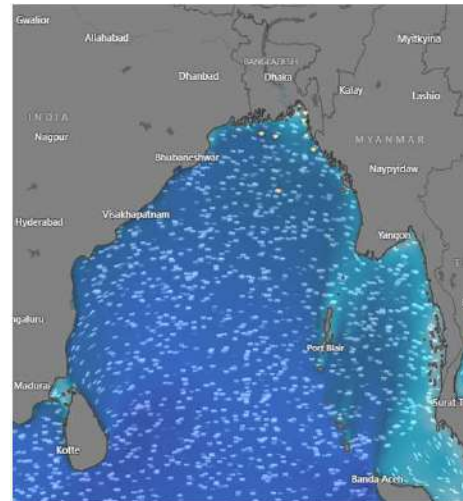
**10 Mar 2025**



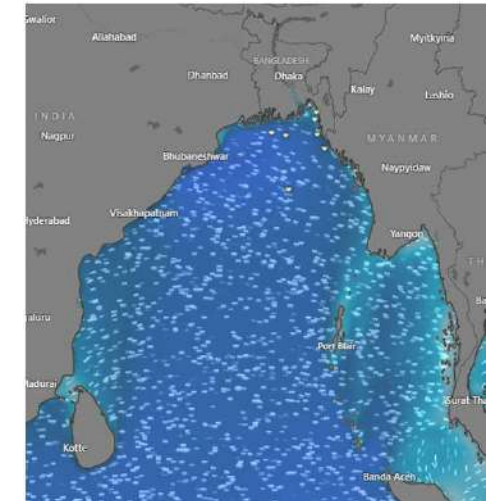
**11 Mar 2025**



**12 Mar 2025**



**13 Mar 2025**



Significant wave height (m)





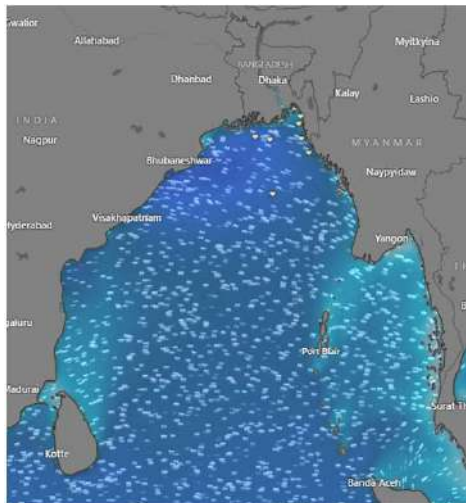
# MARINE WEATHER FORECAST (10 to 17 Mar 2025)

## ABEAM TO ST. MARTIN'S LIGHT HOUSE (20° 37' N, 092° 08' E)

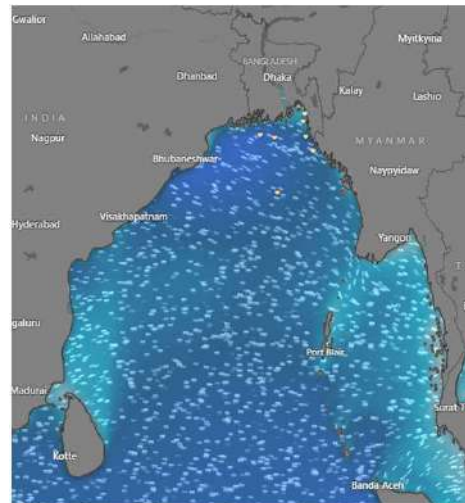


Date	Time	Air Temp (°C)		Sea Surface Temp (°C)	Baro Pressure (mbar)	Wind Direction	Wind Spd (kts)		Wave Ht (m)	Sea State	Humidity (%)	Prob of Rain (%)	Amount of Rain (mm)
		Max	Min				Gusting	Avg					
14-03-25 (Friday)	0001	30	22	25	1008	S	11	8	1.1	3	98	6	0.0
	0600			24	1012	SSE	12	9	1.1	3	99	8	0.0
	1200			28	1009	SSW	11	7	1.1	3	76	3	0.0
	1800			26	1012	SW	10	7	1.1	3	94	5	0.0
15-03-25 (Saturday)	0001	30	22	25	1008	SSW	12	8	1.0	3	99	7	0.0
	0600			24	1012	S	11	7	1.0	3	99	9	0.0
	1200			28	1009	SSW	9	6	1.0	3	98	3	0.0
	1800			26	1012	SW	12	10	1.0	3	94	6	0.0
16-03-25 (Sunday)	0001	31	22	25	1008	W	13	7	0.9	3	98	8	0.0
	0600			24	1012	S	9	6	0.9	3	99	9	0.0
	1200			28	1009	SW	8	4	0.9	3	78	5	0.0
	1800			26	1012	W	15	11	0.9	3	94	7	0.0
17-03-25 (Monday)	0001	30	22	25	1008	NW	15	8	0.9	3	98	6	0.0
	0600			24	1012	NNE	10	6	0.9	3	99	8	0.0
	1200			28	1009	NW	9	3	0.9	3	79	3	0.0
	1800			26	1012	W	14	10	0.9	3	95	6	0.0

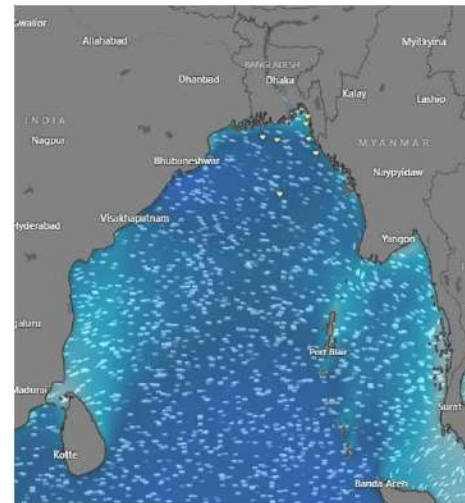
**14 Mar 2025**



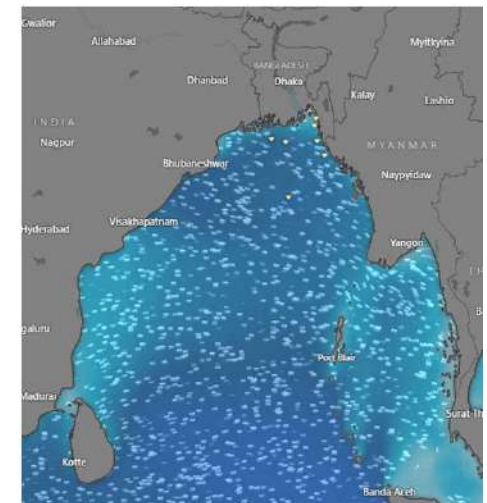
**15 Mar 2025**



**16 Mar 2025**



**17 Mar 2025**



Significant wave height (m)



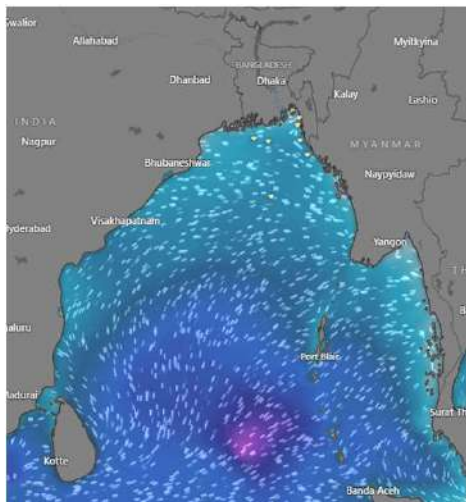
# MARINE WEATHER FORECAST (10 to 17 Mar 2025)

## PAYRA FAIRWAY (21° 22' N, 090° 6' E)

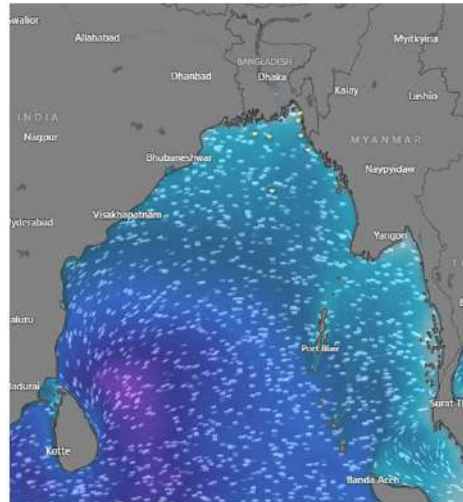


Date	Time	Air Temp (°C)		Sea Surface Temp (°C)	Baro Pressure (mbar)	Wind Direction	Wind Spd (kts)		Wave Ht (m)	Sea State	Humidity (%)	Prob of Rain (%)	Amount of Rain (mm)
		Max	Min				Gusting	Avg					
10-03-25 (Monday)	0001	32	22	25	1011	NW	10	8	0.5	2	85	8	0.0
	0600			24	1016	N	12	9	0.5	2	88	9	0.0
	1200			27	1012	NNE	13	8	0.6	3	45	2	0.0
	1800			26	1013	NNW	7	3	0.5	2	62	7	0.0
11-03-25 (Tuesday)	0001	32	22	25	1010	NW	13	10	0.5	2	83	6	0.0
	0600			24	1014	NNW	11	4	0.5	2	89	8	0.0
	1200			27	1011	N	8	5	0.5	2	51	3	0.0
	1800			26	1013	SW	12	9	0.6	3	69	6	0.0
12-03-25 (Wednesday)	0001	31	22	25	1010	SW	14	7	0.7	3	87	7	0.0
	0600			24	1014	SW	11	9	0.7	3	90	9	0.0
	1200			27	1011	W	15	12	0.9	3	63	5	0.0
	1800			26	1012	SSW	16	12	1.0	3	84	6	0.0
13-03-25 (Thursday)	0001	30	22	25	1009	SSW	19	15	1.2	3	92	7	0.0
	0600			24	1013	SW	19	16	1.2	3	94	8	0.0
	1200			27	1010	SW	18	15	1.2	3	73	3	0.0
	1800			26	1012	S	18	14	1.2	3	91	5	0.0

**10 Mar 2025**



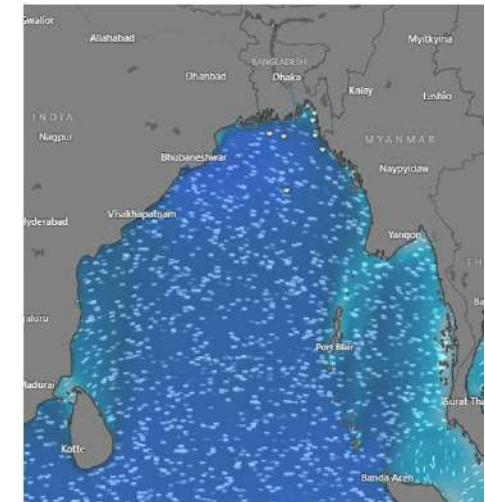
**11 Mar 2025**



**12 Mar 2025**



**13 Mar 2025**



Significant wave height (m)



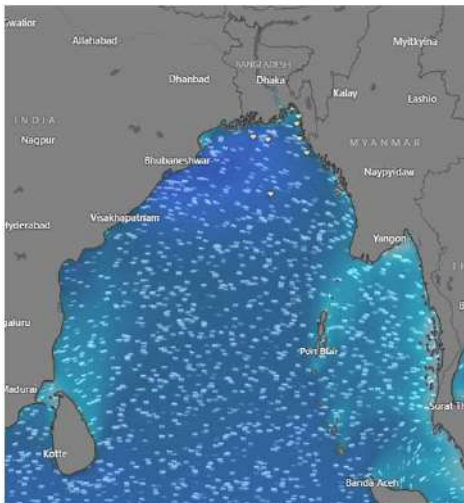
# MARINE WEATHER FORECAST (10 to 17 Mar 2025)

## PAYRA FAIRWAY (21° 22' N, 090° 6' E)

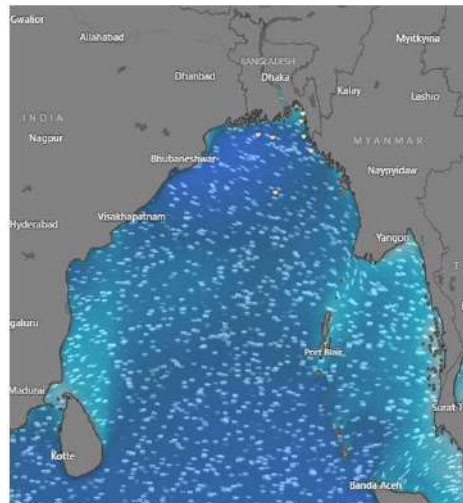


Date	Time	Air Temp (°C)		Sea Surface Temp (°C)	Baro Pressure (mbar)	Wind Direction	Wind Spd (kts)		Wave Ht (m)	Sea State	Humidity (%)	Prob of Rain (%)	Amount of Rain (mm)
		Max	Min				Gusting	Avg					
14-03-25 (Friday)	0001	30	22	25	1008	S	18	14	1.2	3	93	7	0.0
	0600			24	1011	SSW	19	14	1.2	3	95	8	0.0
	1200			27	1009	SSW	17	12	1.2	3	78	3	0.0
	1800			26	1010	SSW	14	11	1.2	3	91	7	0.0
15-03-25 (Saturday)	0001	30	22	25	1008	S	18	15	1.2	3	94	8	0.0
	0600			24	1011	SW	19	15	1.2	3	96	9	0.0
	1200			27	1009	SSW	17	9	1.1	3	78	2	0.0
	1800			26	1010	SSW	14	11	1.2	3	91	5	0.0
16-03-25 (Sunday)	0001	31	23	25	1008	SW	19	12	1.2	3	97	8	0.0
	0600			24	1011	W	17	10	1.1	3	99	9	0.0
	1200			27	1009	SSW	10	5	1.0	3	77	3	0.0
	1800			26	1010	SSW	18	11	1.1	3	91	6	0.0
17-03-25 (Monday)	0001	31	23	25	1008	SSW	15	11	1.0	3	96	7	0.0
	0600			24	1011	W	17	10	1.0	3	98	9	0.0
	1200			27	1009	SW	13	7	0.9	3	73	2	0.0
	1800			26	1010	SSW	15	12	1.0	3	87	5	0.0

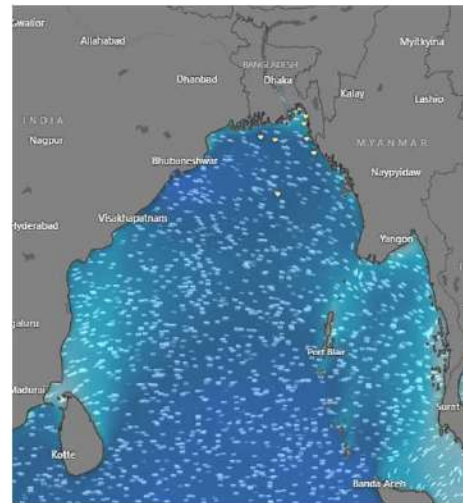
**14 Mar 2025**



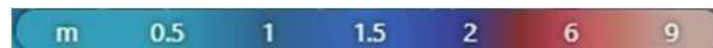
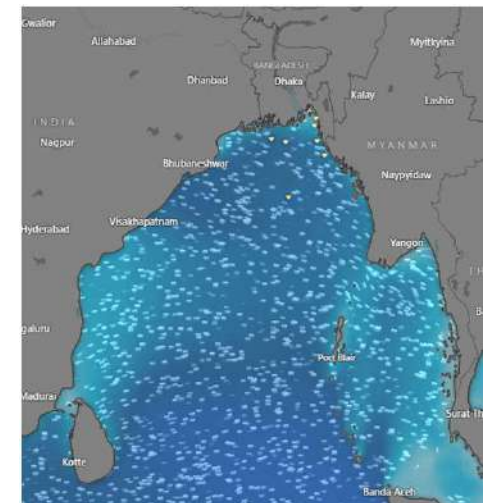
**15 Mar 2025**



**16 Mar 2025**



**17 Mar 2025**



Significant wave height (m)



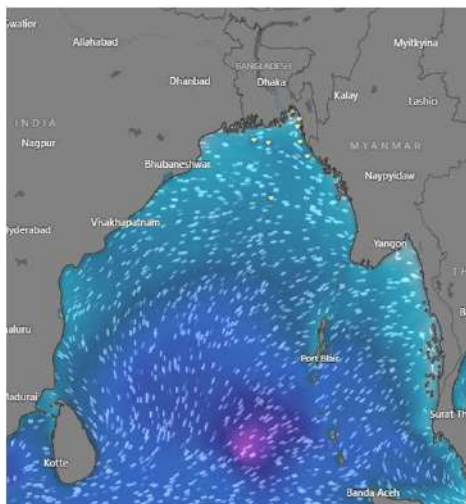
# MARINE WEATHER FORECAST (10 to 17 Mar 2025)

## MONGLA FAIRWAY (21° 26' N, 089° 34' E)

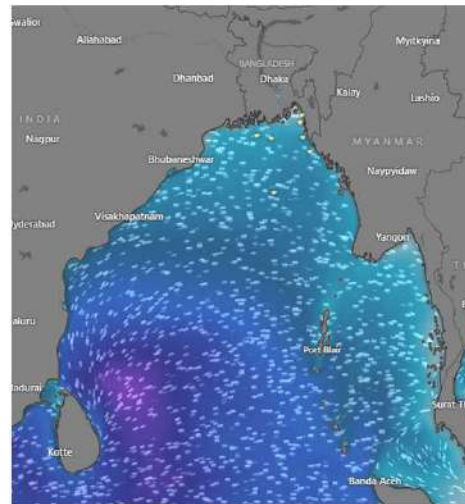


Date	Time	Air Temp (°C)		Sea Surface Temp (°C)	Baro Pressure (mbar)	Wind Direction	Wind Spd (kts)		Wave Ht (m)	Sea State	Humidity (%)	Prob of Rain (%)	Amount of Rain (mm)
		Max	Min				Gusting	Avg					
10-03-25 (Monday)	0001	32	21	25	1010	W	8	6	0.5	2	87	6	0.0
	0600			24	1015	NNE	9	7	0.5	2	90	9	0.0
	1200			27	1012	NNE	11	7	0.6	3	46	3	0.0
	1800			26	1013	SSW	10	4	0.5	2	62	5	0.0
11-03-25 (Tuesday)	0001	32	21	25	1010	NW	10	5	0.5	2	87	8	0.0
	0600			24	1015	NW	8	5	0.5	2	89	9	0.0
	1200			27	1011	NNW	9	4	0.5	2	46	4	0.0
	1800			26	1013	SW	14	11	0.6	3	64	5	0.0
12-03-25 (Wednesday)	0001	30	21	25	1010	SW	14	10	0.7	3	90	8	0.0
	0600			24	1014	SSW	15	12	0.8	3	96	9	0.0
	1200			27	1011	SW	17	13	1.0	3	55	4	0.0
	1800			26	1012	SSW	15	12	1.0	3	68	6	0.0
13-03-25 (Thursday)	0001	30	21	25	1010	SW	19	16	0.2	3	90	8	0.0
	0600			24	1014	SSW	19	15	0.2	3	96	9	0.0
	1200			27	1011	SW	18	15	1.2	3	54	4	0.0
	1800			26	1012	SSW	17	12	1.2	3	65	6	0.0

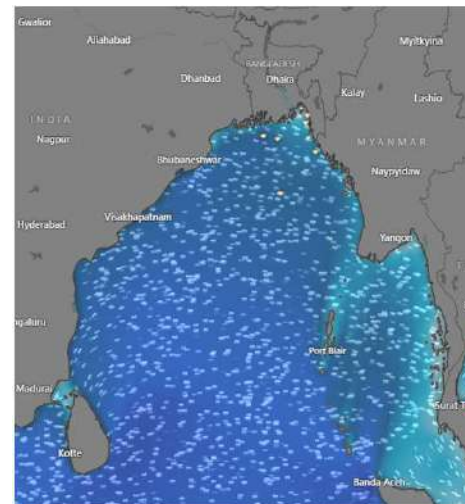
**10 Mar 2025**



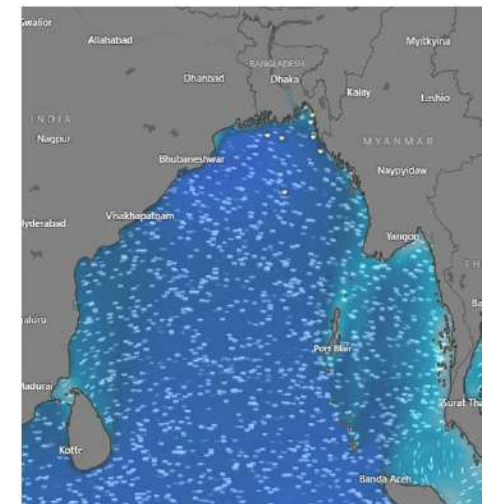
**11 Mar 2025**



**12 Mar 2025**



**13 Mar 2025**



Significant wave height (m)



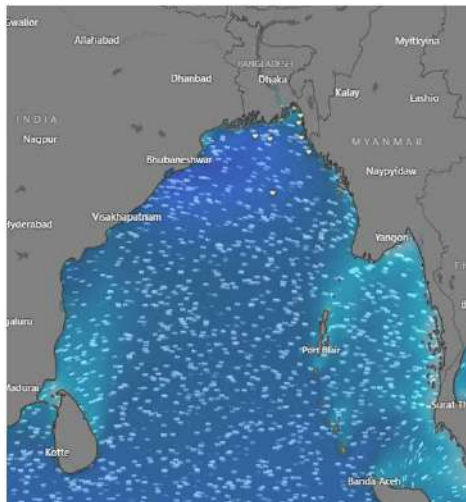
# MARINE WEATHER FORECAST (10 to 17 Mar 2025)

## MONGLA FAIRWAY (21° 26' N, 089° 34' E)

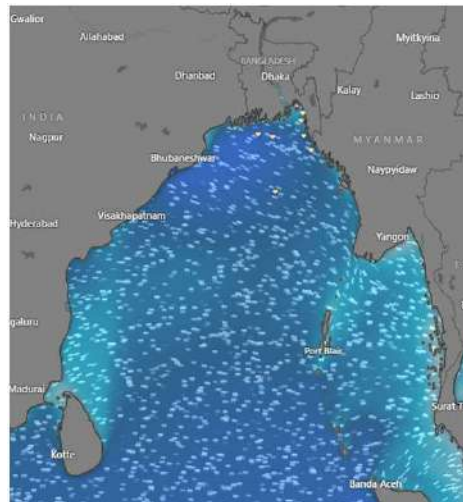


Date	Time	Air Temp (°C)		Sea Surface Temp (°C)	Baro Pressure (mbar)	Wind Direction	Wind Spd (kts)		Wave Ht (m)	Sea State	Humidity (%)	Prob of Rain (%)	Amount of Rain (mm)
		Max	Min				Gusting	Avg					
14-03-25 (Friday)	0001	30	21	25	1008	S	19	15	1.2	3	85	7	0.0
	0600			24	1012	SW	19	16	1.2	3	89	9	0.0
	1200			27	1009	SW	18	13	1.2	3	47	3	0.0
	1800			26	1011	SSW	15	10	1.1	3	67	6	0.0
15-03-25 (Saturday)	0001	30	21	25	1008	S	19	14	1.2	3	88	7	0.0
	0600			24	1012	SSW	19	16	1.2	3	92	9	0.0
	1200			27	1009	W	17	11	1.1	3	54	3	0.0
	1800			26	1011	S	15	11	1.2	3	74	6	0.0
16-03-25 (Sunday)	0001	31	21	25	1008	SSW	18	12	1.2	3	93	7	0.0
	0600			24	1012	SW	18	12	1.2	3	96	9	0.0
	1200			27	1009	SSW	10	6	1.1	3	52	3	0.0
	1800			26	1011	SSW	18	13	1.2	3	75	6	0.0
17-03-25 (Monday)	0001	31	21	25	1008	SSW	17	12	1.2	3	89	6	0.0
	0600			24	1012	W	16	9	1.1	3	91	8	0.0
	1200			27	1009	SW	13	9	1.1	3	48	2	0.0
	1800			26	1011	SW	14	10	1.1	3	73	5	0.0

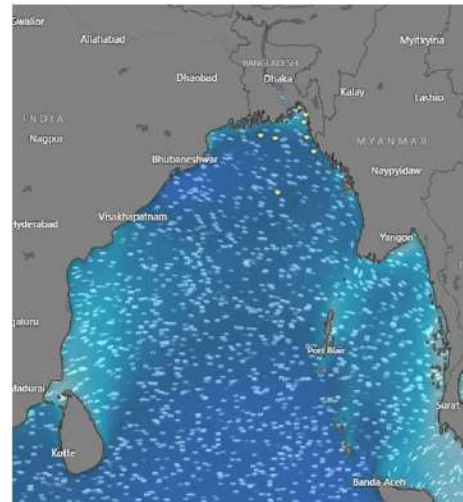
**14 Mar 2025**



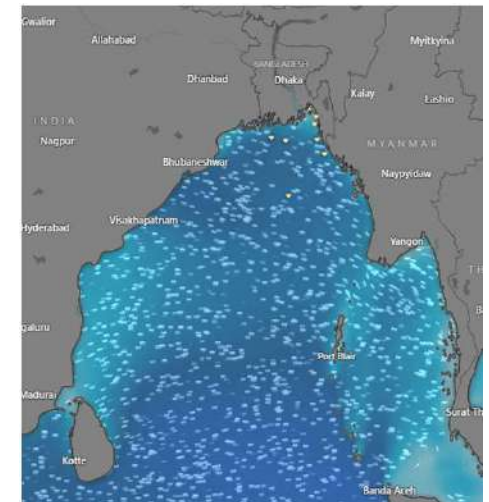
**15 Mar 2025**



**16 Mar 2025**



**17 Mar 2025**



Significant wave height (m)



# MARINE WEATHER FORECAST (10 to 17 Mar 2025)

## OUTER EEZ (18° 48' N, 090° 30' E)



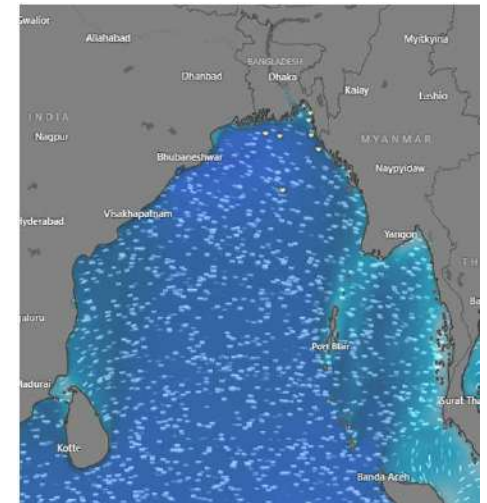
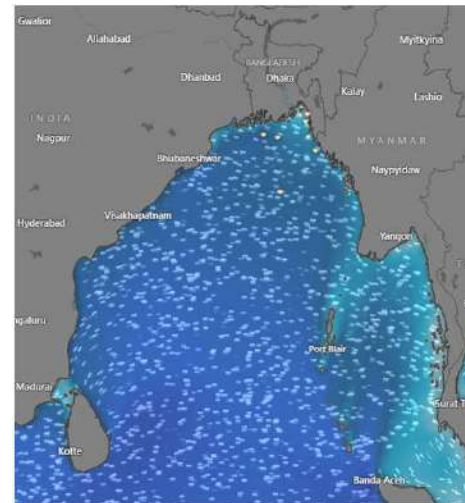
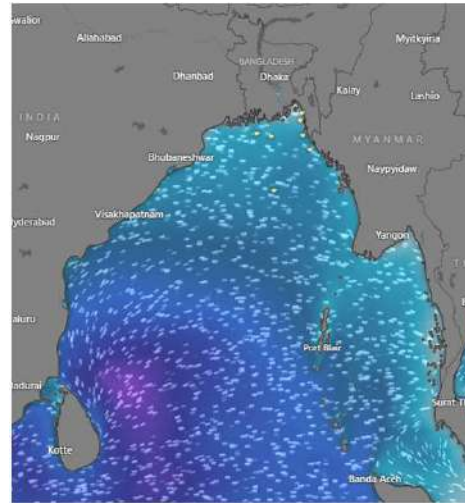
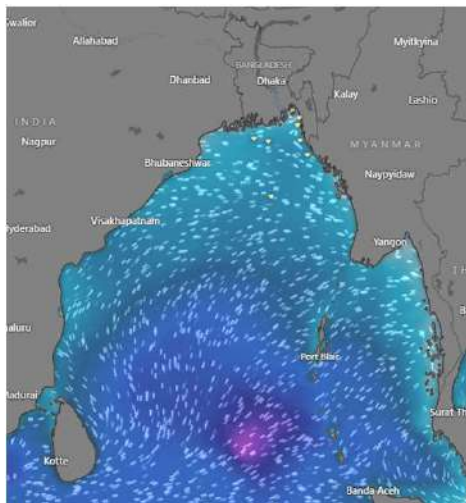
Date	Time	Air Temp (°C)		Sea Surface Temp (°C)	Baro Pressure (mbar)	Wind Direction	Wind Spd (kts)		Wave Ht (m)	Sea State	Humidity (%)	Prob of Rain (%)	Amount of Rain (mm)
		Max	Min				Gusting	Avg					
10-03-25 (Monday)	0001	32	22	26	1010	N	11	8	0.6	3	88	6	0.0
	0600			25	1015	NNE	14	10	0.6	3	90	8	0.0
	1200			28	1012	NNE	16	11	0.8	3	37	2	0.0
	1800			27	1013	NNE	15	9	0.8	3	58	5	0.0
11-03-25 (Tuesday)	0001	32	22	26	1010	NNW	8	6	0.7	3	67	8	0.0
	0600			25	1015	NNW	14	10	0.7	3	72	9	0.0
	1200			28	1012	NNE	10	7	0.7	3	43	2	0.0
	1800			27	1013	NNW	9	6	0.7	3	73	6	0.0
12-03-25 (Wednesday)	0001	31	21	26	1010	NW	14	8	0.8	3	87	7	0.0
	0600			25	1015	W	10	5	0.9	3	89	9	0.0
	1200			28	1012	W	10	7	1.0	3	61	3	0.0
	1800			27	1013	SW	14	11	1.1	3	86	5	0.0
13-03-25 (Thursday)	0001	31	21	26	1010	SW	16	12	1.1	3	96	6	0.0
	0600			25	1015	SW	16	11	1.1	3	98	8	0.0
	1200			28	1012	SW	16	10	1.1	3	75	2	0.0
	1800			27	1013	SSW	13	10	1.0	3	94	6	0.0

**10 Mar 2025**

**11 Mar 2025**

**12 Mar 2025**

**13 Mar 2025**



Significant wave height (m)



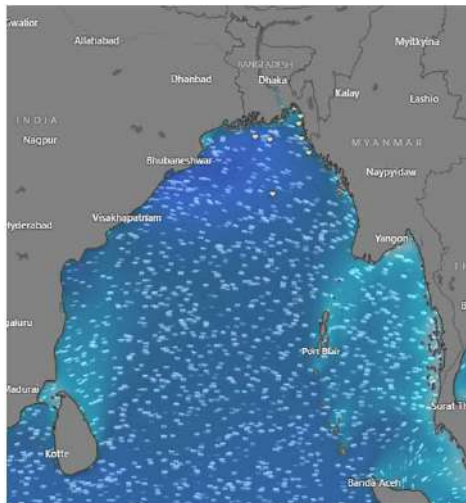
# MARINE WEATHER FORECAST (10 to 17 Mar 2025)

## OUTER EEZ (18° 48' N, 090° 30' E)

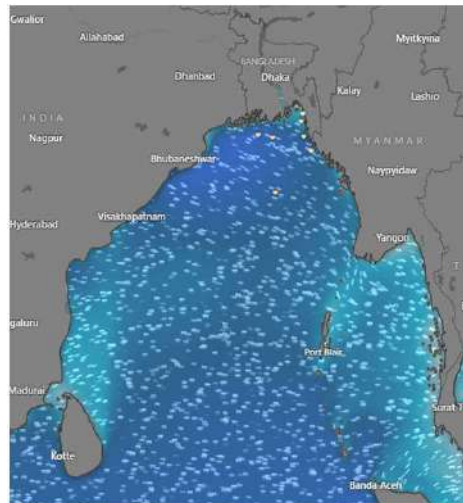


Date	Time	Air Temp (°C)		Sea Surface Temp (°C)	Baro Pressure (mbar)	Wind Direction	Wind Spd (kts)		ave Ht (m)	Sea State	Humidity (%)	Prob of Rain (%)	Amount of Rain (mm)
		Max	Min				Gusting	Avg					
14-03-25 (Friday)	0001	31	21	26	1008	SSW	16	12	1.2	3	98	8	0.0
	0600			25	1012	SW	18	13	1.2	3	99	9	0.0
	1200			28	1009	SW	15	9	1.2	3	77	3	0.0
	1800			27	1011	SW	11	8	1.2	3	94	6	0.0
15-03-25 (Saturday)	0001	31	21	26	1008	SW	17	14	1.2	3	99	8	0.0
	0600			25	1012	SW	16	13	1.2	3	99	9	0.0
	1200			28	1009	SSW	11	6	1.2	3	98	3	0.0
	1800			27	1011	SW	10	7	1.2	3	94	5	0.0
16-03-25 (Sunday)	0001	32	22	26	1008	SW	11	8	1.2	3	98	8	0.0
	0600			25	1012	SW	12	8	1.2	3	99	9	0.0
	1200			28	1009	SW	11	5	1.1	3	78	3	0.0
	1800			27	1011	W	10	6	1.0	3	94	6	0.0
17-03-25 (Monday)	0001	32	22	26	1008	SW	12	9	1.1	3	98	8	0.0
	0600			25	1012	W	12	7	1.0	3	99	9	0.0
	1200			28	1009	SW	12	7	1.0	3	79	5	0.0
	1800			27	1011	W	11	8	1.0	3	95	7	0.0

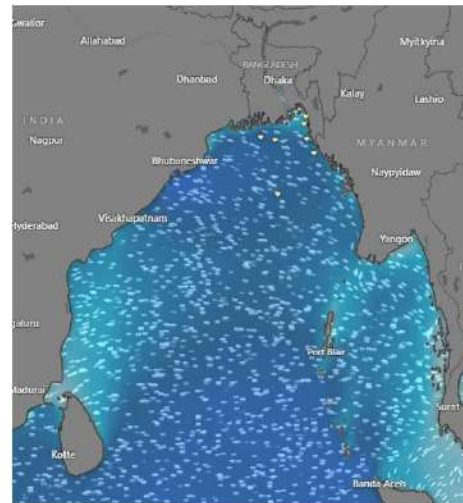
**14 Mar 2025**



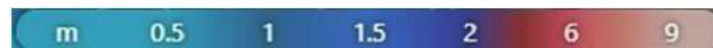
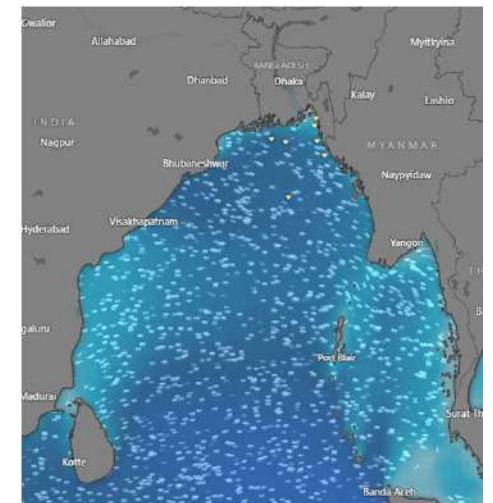
**15 Mar 2025**



**16 Mar 2025**



**17 Mar 2025**



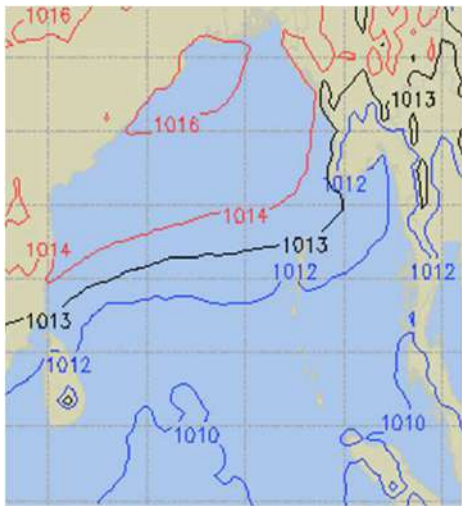
Significant wave height (m)



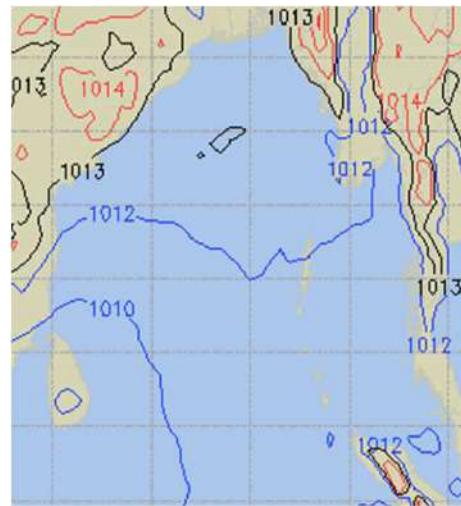
# PREDICTED SURFACE PRESSURE FORECAST (10 to 16 Mar 2025)



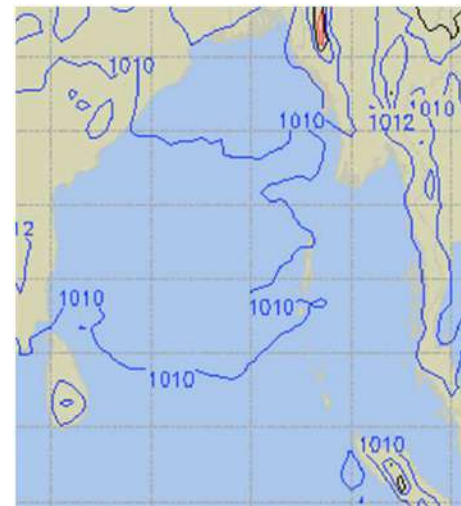
**10 Mar 2025**



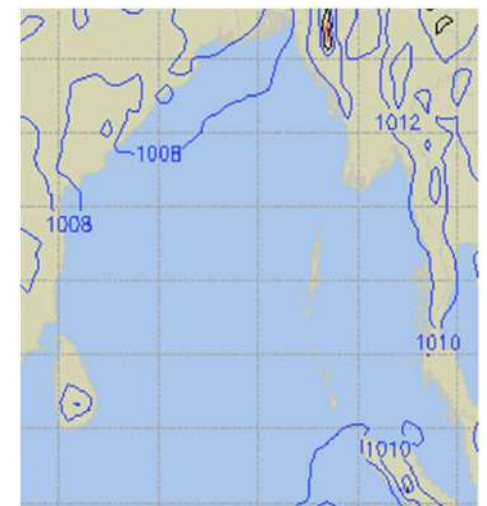
**11 Mar 2025**



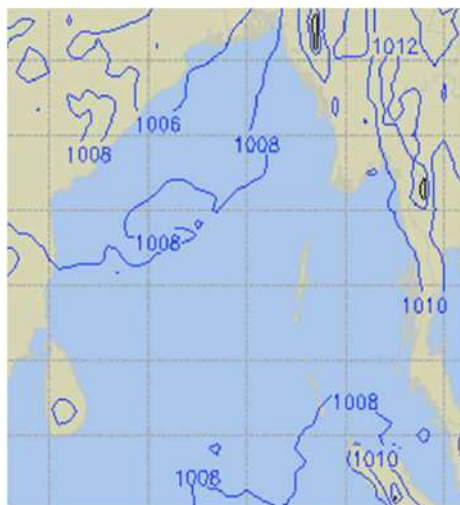
**12 Mar 2025**



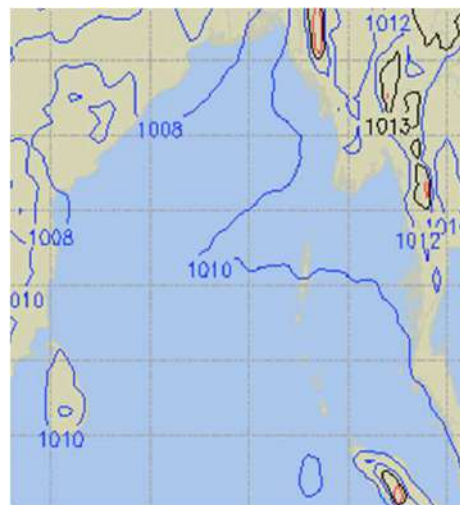
**13 Mar 2025**



**14 Mar 2025**



**15 Mar 2025**



**16 Mar 2025**

