



SUMMARY OF MARINE WEATHER FORECAST
COASTAL AREA OF BANGLADESH
DATE: 10 to 17 Jan 2025



Fleet forecast	Seasonal low lies over south Bay, extending its trough to Northeast Bay.
Wind direction, speed	North/North-easterly 7 kts, (Temporary gusting up to 21 kts).
Wave height & sea state	Wave height: 0.1 to 1.1 m (Sea state:1 to 4).
Sea surface temperature	19°C - 24°C (May remain nearly unchanged).
Baro pressure	1012-1017 mb.
Rainfall	Temporary partly cloudy sky over Bay of Bengal & adjoining area.
Fog	Moderate to dense fog may occur over the coastal area during midnight to morning & it may continue till noon.

Outlook for 10 to 17 Jan 2025: Weather may remain dry with temporary partly cloudy sky & night temperature may fall. Due to dense fog cold feelings may persists over the coastal area during midnight to morning.



MARINE WEATHER FORECAST (10 to 17 Jan 2025)

PATENGA POINT (22° 12' N, 091° 38' E)



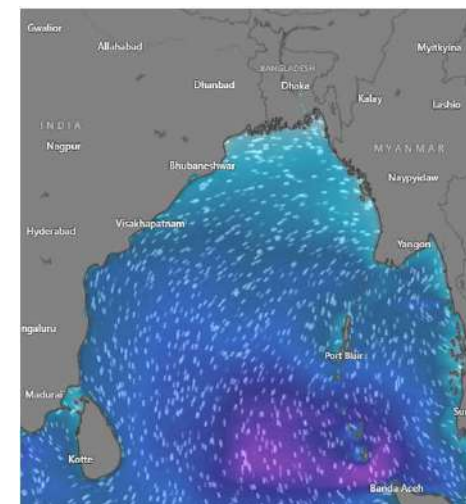
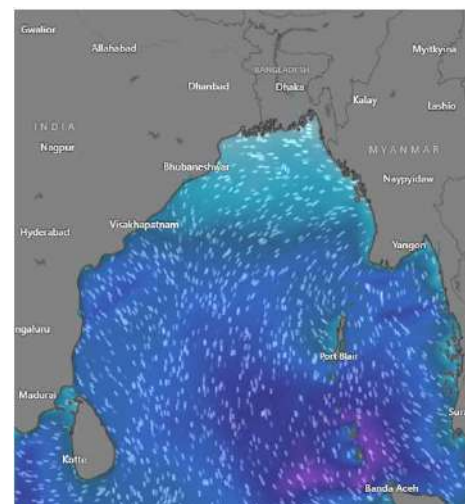
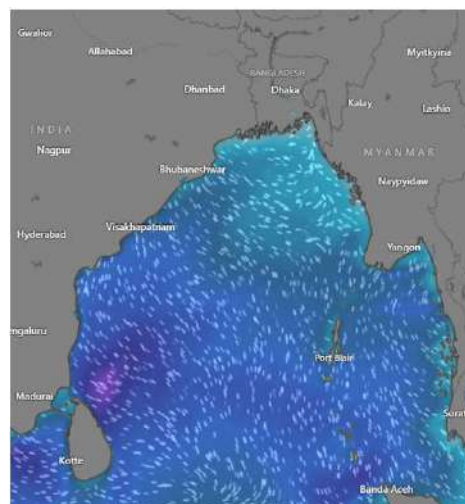
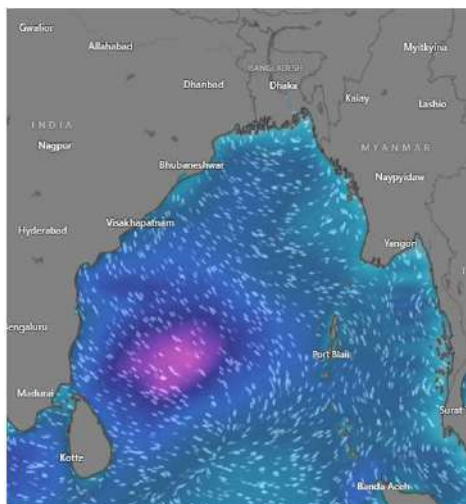
Date	Time	Air Temp (°C)		Sea Surface Temp (°C)	Baro Pressure (mbar)	Wind Direction	Wind Spd (kts)		Wave Ht (m)	Sea State	Humidity (%)	Prob of Rain (%)	Amount of Rain (mm)
		Max	Min				Gusting	Avg					
10-01-25 (Friday)	0001	25	14	19	1016	N	11	7	0.3	2	89	8	0.0
	0600			16	1015	NNE	12	7	0.3	2	92	7	0.0
	1200			22	1016	NNW	10	6	0.2	2	66	3	0.0
	1800			21	1014	NNW	12	5	0.2	2	72	6	0.0
11-01-25 (Saturday)	0001	26	15	19	1014	NNE	7	4	0.1	1	87	7	0.0
	0600			16	1016	NNE	8	5	0.1	1	93	8	0.0
	1200			24	1013	NNW	7	4	0.1	1	62	2	0.0
	1800			22	1014	NW	9	4	0.1	1	73	8	0.0
12-01-25 (Sunday)	0001	26	16	19	1014	NNE	5	3	0.1	1	91	6	0.0
	0600			18	1016	NNE	6	3	0.1	1	94	7	0.0
	1200			24	1013	NW	6	4	0.1	1	61	4	0.0
	1800			22	1014	NNW	5	4	0.1	1	75	9	0.0
13-01-25 (Monday)	0001	25	15	19	1014	NE	5	3	0.1	1	91	7	0.0
	0600			18	1016	NNE	6	3	0.1	1	95	8	0.0
	1200			24	1013	NNW	7	4	0.1	1	63	3	0.0
	1800			22	1014	NW	10	3	0.1	1	76	7	0.0

10 Jan 2025

11 Jan 2025

12 Jan 2025

13 Jan 2025



Significant wave height (m)



MARINE WEATHER FORECAST (10 to 17 Jan 2025)

PATENGA POINT (22° 12' N, 091° 38' E)



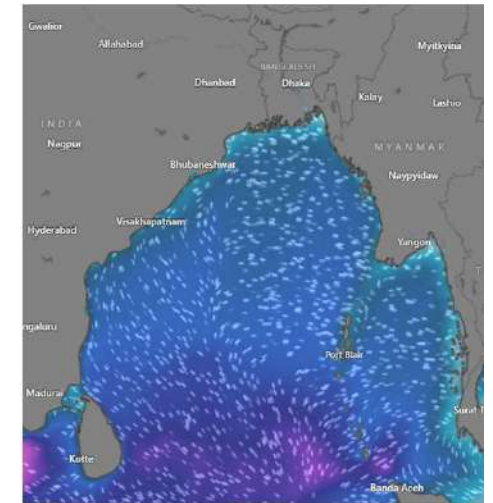
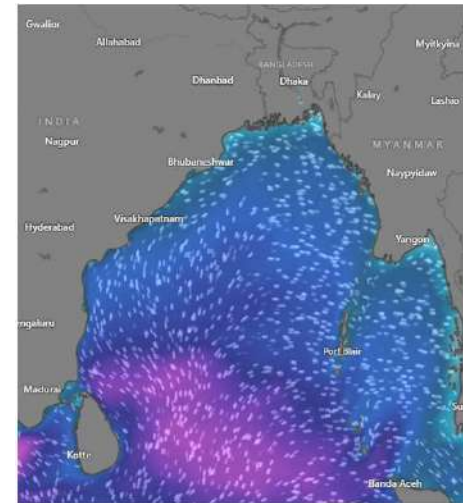
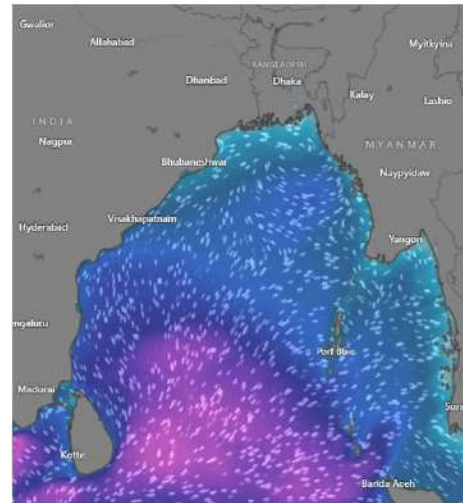
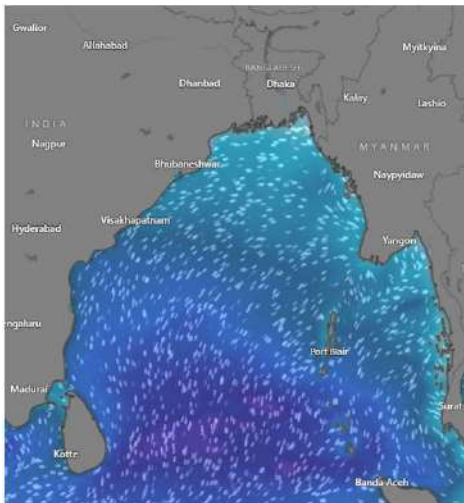
Date	Time	Air Temp (°C)		Sea Surface Temp (°C)	Baro Pressure (mbar)	Wind Direction	Wind Spd (kts)		Wave Ht (m)	Sea State	Humidity (%)	Prob of Rain (%)	Amount of Rain (mm)
		Max	Min				Gusting	Avg					
14-01-25 (Tuesday)	0001	27	16	21	1013	N	7	4	0.1	1	90	3	0.0
	0600			17	1016	NNW	8	5	0.1	1	91	5	0.0
	1200			24	1013	NNW	10	6	0.1	1	65	7	0.0
	1800			23	1014	NNW	11	6	0.2	2	76	5	0.0
15-01-25 (Wednesday)	0001	27	16	20	1013	N	12	8	0.2	2	88	3	0.0
	0600			18	1016	NNW	11	6	0.2	2	90	5	0.0
	1200			23	1013	NW	11	7	0.2	2	65	7	0.0
	1800			22	1014	NNW	12	6	0.2	2	76	5	0.0
16-01-25 (Thursday)	0001	27	16	19	1013	N	10	5	0.2	2	88	3	0.0
	0600			17	1016	NNE	9	5	0.2	2	90	5	0.0
	1200			23	1013	NNW	10	6	0.2	2	65	7	0.0
	1800			22	1014	NNW	10	6	0.2	2	76	5	0.0
17-01-25 (Friday)	0001	27	16	19	1013	N	8	4	0.2	2	89	3	0.0
	0600			17	1016	NNE	7	4	0.2	2	91	5	0.0
	1200			23	1013	NNW	9	5	0.1	1	64	7	0.0
	1800			22	1014	NNW	10	4	0.2	2	72	5	0.0

14 Jan 2025

15 Jan 2025

16 Jan 2025

17 Jan 2025



Significant wave height (m)



MARINE WEATHER FORECAST (10 to 17 Jan 2025)

ABEAM TO KUTUBDIA (21° 51' N, 091° 40' E)



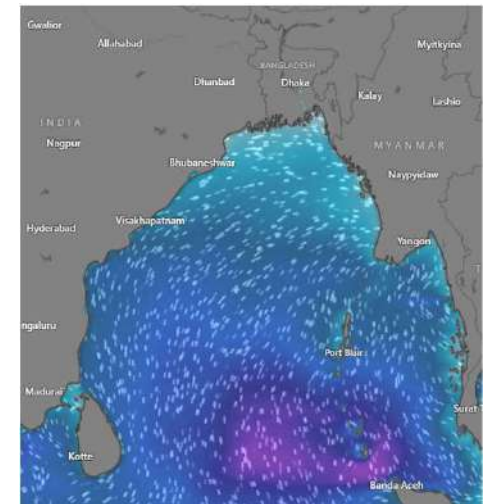
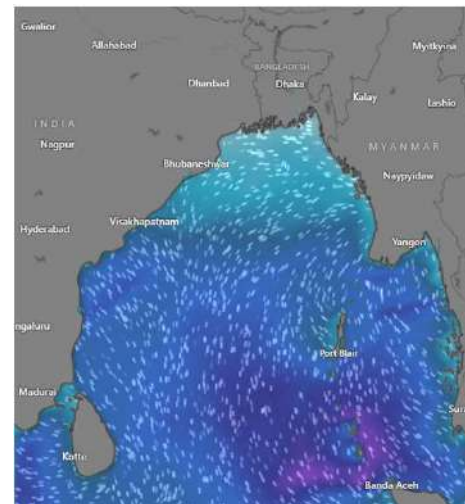
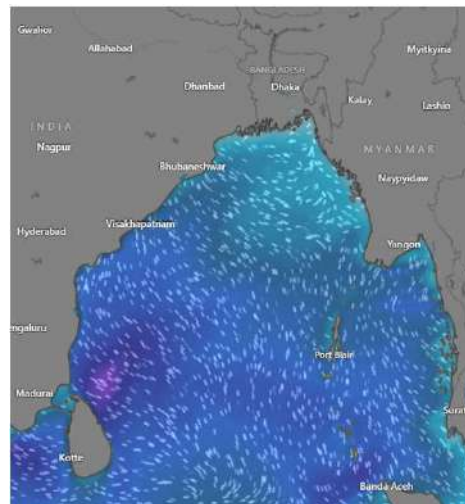
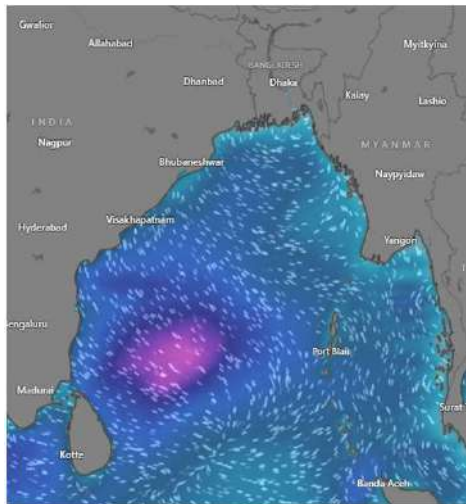
Date	Time	Air Temp (°C)		Sea Surface Temp (°C)	Baro Pressure (mbar)	Wind Direction	Wind Spd (kts)		Wave Ht (m)	Sea State	Humidity (%)	Prob of Rain (%)	Amount of Rain (mm)
		Max	Min				Gusting	Avg					
10-01-25 (Friday)	0001	25	16	22	1014	NNW	15	12	0.4	2	89	8	0.0
	0600			20	1016	NNE	18	12	0.5	2	92	7	0.0
	1200			20	1013	N	14	10	0.4	2	67	3	0.0
	1800			22	1014	NNW	13	8	0.3	2	71	5	0.0
11-01-25 (Saturday)	0001	25	16	22	1014	NNE	10	8	0.2	2	87	7	0.0
	0600			20	1016	NNE	12	9	0.3	2	92	5	0.0
	1200			21	1013	N	10	7	0.2	2	65	6	0.0
	1800			22	1014	NNW	8	4	0.2	2	74	5	0.0
12-01-25 (Sunday)	0001	25	16	22	1014	NNW	4	2	0.1	1	87	7	0.0
	0600			21	1016	NNE	8	5	0.1	1	91	5	0.0
	1200			22	1013	N	7	5	0.1	1	67	6	0.0
	1800			23	1014	NNW	7	4	0.1	1	74	5	0.0
13-01-25 (Monday)	0001	25	16	22	1014	NNW	5	1	0.1	1	89	7	0.0
	0600			22	1016	NNE	8	6	0.1	1	92	5	0.0
	1200			21	1013	N	10	5	0.1	1	65	6	0.0
	1800			23	1014	NNW	7	4	0.1	1	71	5	0.0

10 Jan 2025

11 Jan 2025

12 Jan 2025

13 Jan 2025



Significant wave height (m)

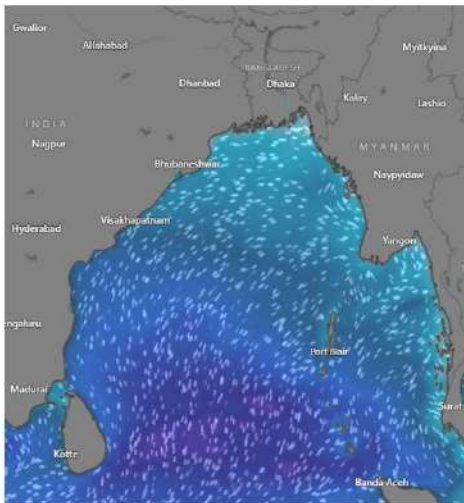


MARINE WEATHER FORECAST (10 to 17 Jan 2025) ABEAM TO KUTUBDIA (21° 51' N, 091° 40' E)

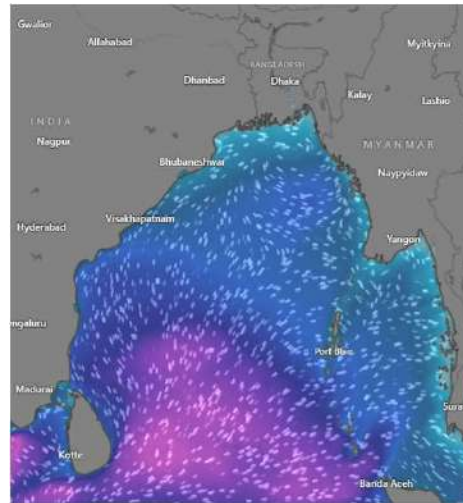


Date	Time	Air Temp (°C)		Sea Surface Temp (°C)	Baro Pressure (mbar)	Wind Direction	Wind Spd (kts)		Wave Ht (m)	Sea State	Humidity (%)	Prob of Rain (%)	Amount of Rain (mm)
		Max	Min				Gusting	Avg					
14-01-25 (Tuesday)	0001	16	18	22	1013	NNW	9	7	0.2	2	89	8	0.0
	0600			21	1015	NNE	12	8	0.2	2	92	7	0.0
	1200			21	1013	N	10	7	0.2	2	65	8	0.0
	1800			24	1014	NNE	16	12	0.3	2	75	9	0.0
15-01-25 (Wednesday)	0001	16	18	22	1013	W	16	12	0.4	2	89	5	0.0
	0600			21	1015	NNE	16	10	0.3	2	91	6	0.0
	1200			21	1013	N	14	9	0.3	2	66	8	0.0
	1800			22	1014	N	13	7	0.4	2	70	7	0.0
16-01-25 (Thursday)	0001	16	18	22	1013	W	13	10	0.4	2	91	6	0.0
	0600			20	1015	NNE	13	10	0.4	2	94	8	0.0
	1200			21	1013	N	13	9	0.3	2	62	9	0.0
	1800			22	1014	NNE	12	7	0.3	2	76	7	0.0
17-01-25 (Friday)	0001	16	18	22	1013	W	10	6	0.3	2	91	6	0.0
	0600			21	1015	NNE	11	8	0.3	2	94	8	0.0
	1200			21	1013	N	11	7	0.3	2	68	9	0.0
	1800			22	1014	N	10	6	0.3	2	76	7	0.0

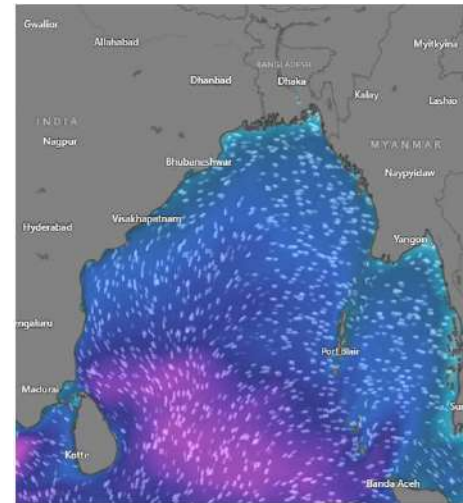
14 Jan 2025



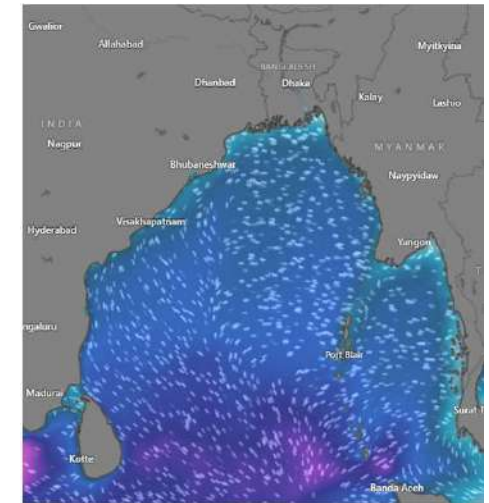
15 Jan 2025



16 Jan 2025



17 Jan 2025



Significant wave height (m)



MARINE WEATHER FORECAST (10 to 17 Jan 2025) ABEAM TO ELEPHANT POINT (21° 11' N, 091° 52' E)



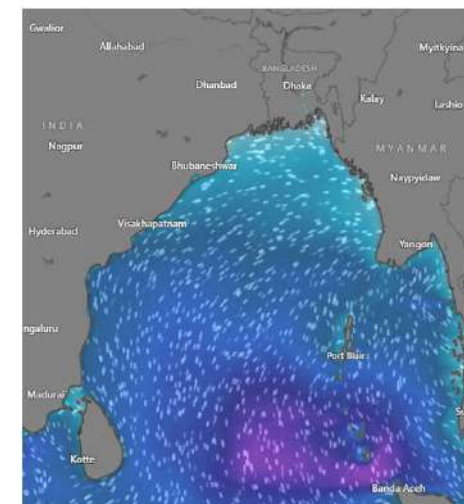
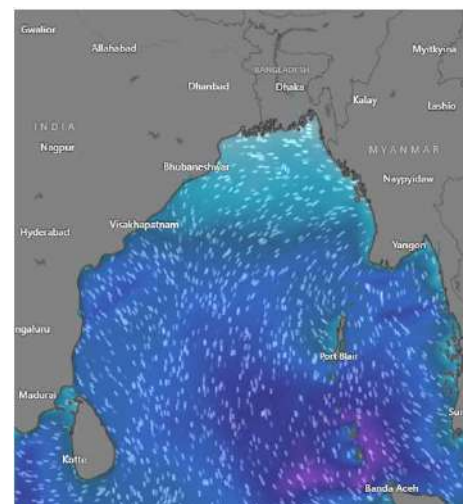
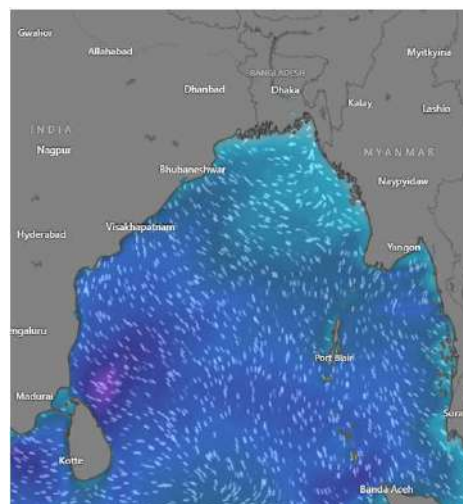
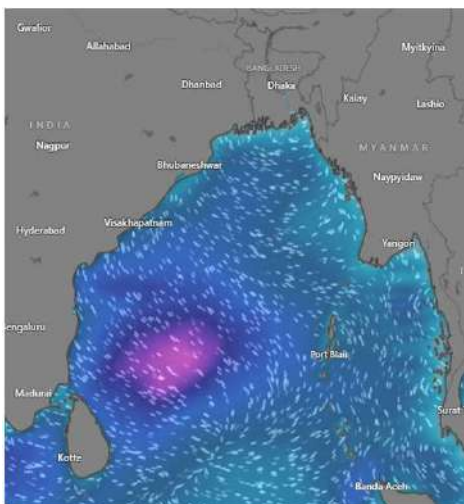
Date	Time	Air Temp (°C)		Sea Surface Temp (°C)	Baro Pressure (mbar)	Wind Direction	Wind Spd (kts)		Wave Ht (m)	Sea State	Humidity (%)	Prob of Rain (%)	Amount of Rain (mm)
		Max	Min				Gusting	Avg					
10-01-25 (Friday)	0001	26	16	22	1014	NNW	17	13	0.6	3	88	8	0.0
	0600			21	1016	NNE	19	14	0.7	3	91	7	0.0
	1200			22	1013	NNW	17	10	0.6	3	64	2	0.0
	1800			23	1014	NW	16	10	0.6	3	72	5	0.0
11-01-25 (Saturday)	0001	26	16	23	1014	NNE	13	9	0.4	2	89	7	0.0
	0600			22	1016	NNW	13	9	0.4	2	93	5	0.0
	1200			22	1013	NNW	11	6	0.4	2	67	6	0.0
	1800			24	1014	N	9	5	0.3	2	72	7	0.0
12-01-25 (Sunday)	0001	26	16	23	1014	NNE	7	5	0.3	2	89	5	0.0
	0600			23	1016	NNW	10	7	0.3	2	90	6	0.0
	1200			23	1013	NNW	10	7	0.3	2	59	5	0.0
	1800			24	1014	N	10	7	0.3	2	79	7	0.0
13-01-25 (Monday)	0001	26	16	24	1014	NNE	7	3	0.3	2	90	5	0.0
	0600			23	1016	NNW	11	9	0.3	2	92	6	0.0
	1200			23	1013	NNW	12	9	0.4	2	67	5	0.0
	1800			23	1014	N	12	9	0.4	2	72	7	0.0

10 Jan 2025

11 Jan 2025

12 Jan 2025

13 Jan 2025



Significant wave height (m)

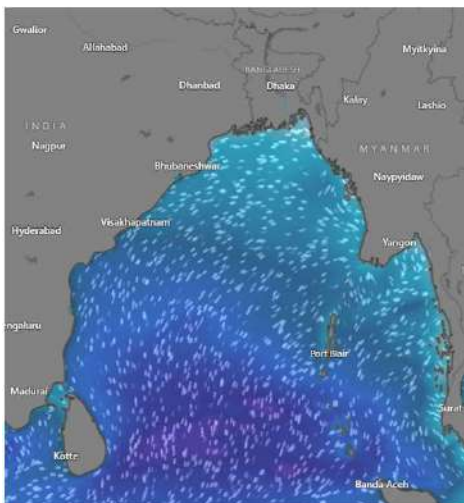


MARINE WEATHER FORECAST (10 to 17 Jan 2025) ABEAM TO ELEPHANT POINT (21° 11' N, 091° 52' E)

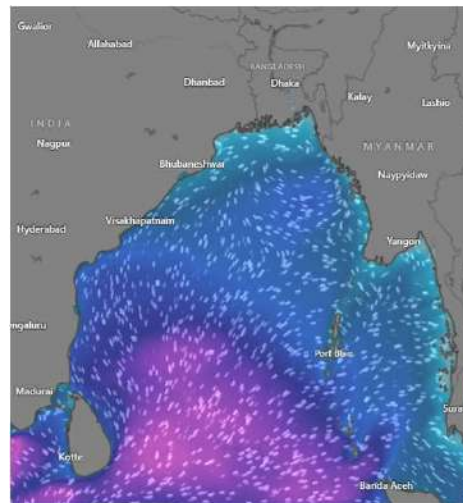


Date	Time	Air Temp (°C)		Sea Surface Temp (°C)	Baro Pressure (mbar)	Wind Direction	Wind Spd (kts)		Wave Ht (m)	Sea State	Humidity (%)	Prob of Rain (%)	Amount of Rain (mm)
		Max	Min				Gusting	Avg					
14-01-25 (Tuesday)	0001	26	16	23	1012	NNW	11	7	0.4	2	89	7	0.0
	0600			22	1014	NNW	14	10	0.4	2	92	6	0.0
	1200			22	1012	NNE	13	10	0.4	2	68	2	0.0
	1800			23	1013	NW	17	12	0.5	2	81	6	0.0
15-01-25 (Wednesday)	0001	26	17	23	1012	NNW	17	13	0.7	3	90	8	0.0
	0600			21	1014	N	18	12	0.7	3	91	7	0.0
	1200			22	1012	NNE	17	13	0.7	3	67	5	0.0
	1800			23	1013	NW	18	12	0.8	3	79	6	0.0
16-01-25 (Thursday)	0001	26	17	23	1012	NNW	15	11	0.8	3	87	7	0.0
	0600			21	1014	NNE	16	11	0.9	3	90	4	0.0
	1200			21	1012	NNW	15	10	0.9	3	65	5	0.0
	1800			23	1013	NW	15	9	0.9	3	74	5	0.0
17-01-25 (Friday)	0001	26	17	22	1012	NNW	12	8	0.9	3	89	8	0.0
	0600			22	1014	NNE	11	18	0.9	3	91	7	0.0
	1200			21	1012	NNW	11	8	0.9	3	64	3	0.0
	1800			23	1013	NW	12	9	0.8	3	72	5	0.0

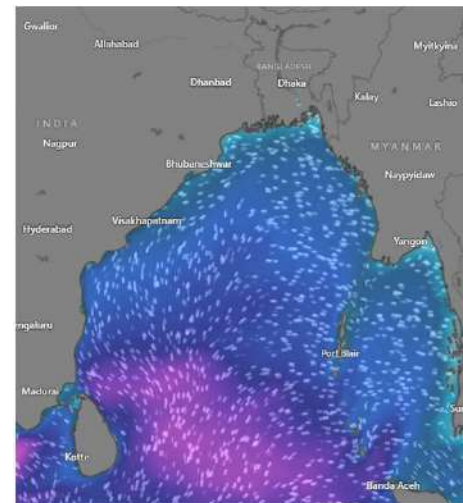
14 Jan 2025



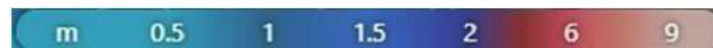
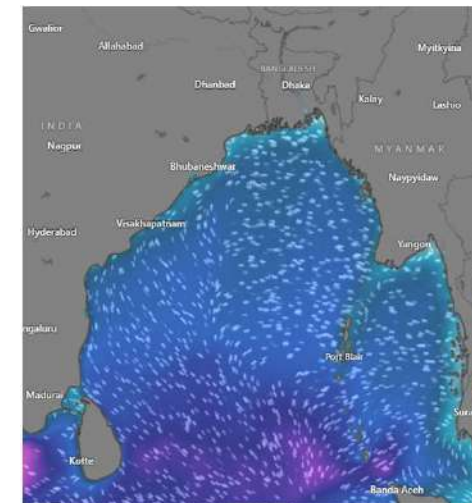
15 Jan 2025



16 Jan 2025



17 Jan 2025



Significant wave height (m)



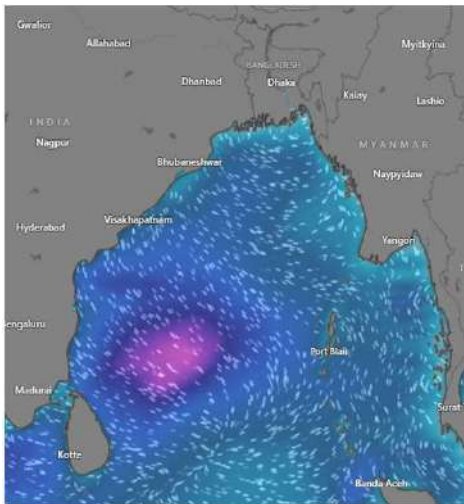
MARINE WEATHER FORECAST (10 to 17 Jan 2025)

ABEAM TO ST. MARTIN'S LIGHT HOUSE (20° 37' N, 092° 08' E)

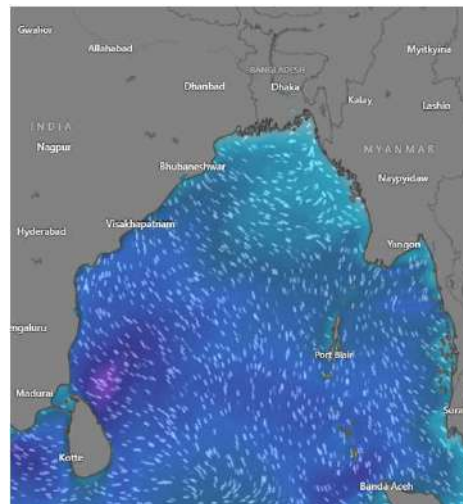


Date	Time	Air Temp (°C)		Sea Surface Temp (°C)	Baro Pressure (mbar)	Wind Direction	Wind Spd (kts)		Wave Ht (m)	Sea State	Humidity (%)	Prob of Rain (%)	Amount of Rain (mm)
		Max	Min				Gusting	Avg					
10-01-25 (Friday)	0001	26	16	22	1014	NW	19	14	0.7	3	90	8	0.0
	0600			22	1015	NNW	20	13	0.7	3	92	7	0.0
	1200			23	1013	NW	16	7	0.6	3	64	4	0.0
	1800			25	1014	NNW	10	7	0.5	2	78	6	0.0
11-01-25 (Saturday)	0001	27	17	23	1014	NW	15	10	0.5	2	89	6	0.0
	0600			23	1015	NNW	12	8	0.5	2	90	5	0.0
	1200			24	1013	NW	8	3	0.4	2	67	2	0.0
	1800			26	1014	NNE	8	5	0.3	2	80	3	0.0
12-01-25 (Sunday)	0001	27	17	25	1014	NW	10	7	0.3	2	89	6	0.0
	0600			24	1015	NNW	13	8	0.4	2	92	5	0.0
	1200			25	1013	NW	9	5	0.3	2	67	2	0.0
	1800			26	1014	NNE	11	8	0.4	2	80	3	0.0
13-01-25 (Monday)	0001	27	17	25	1014	NW	10	6	0.3	2	90	6	0.0
	0600			24	1015	NNW	9	6	0.3	2	91	5	0.0
	1200			24	1013	NW	13	10	0.4	2	67	2	0.0
	1800			25	1014	NNE	14	10	0.5	2	80	3	0.0

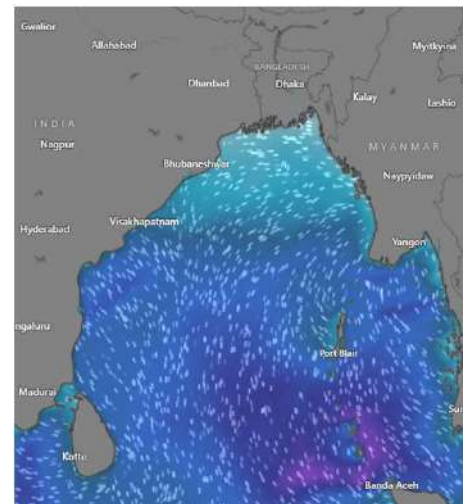
10 Jan 2025



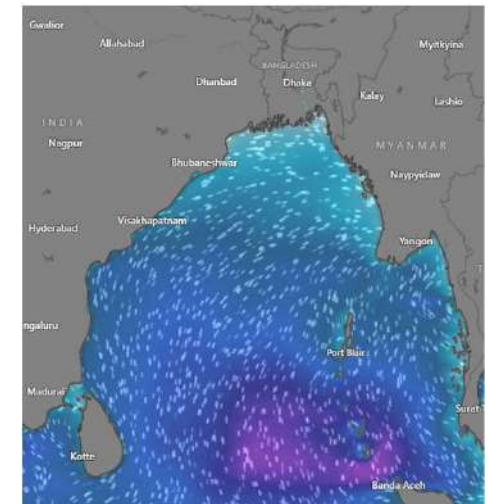
11 Jan 2025



12 Jan 2025



13 Jan 2025



Significant wave height (m)



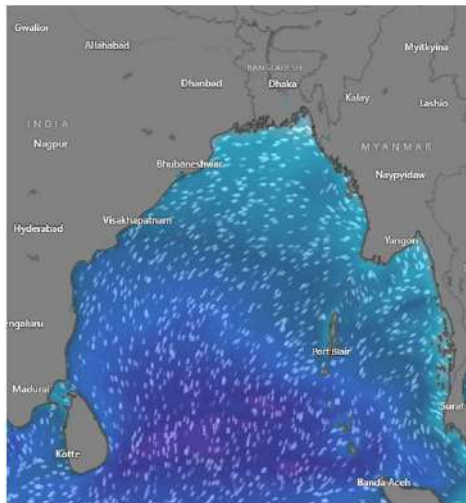
MARINE WEATHER FORECAST (10 to 17 Jan 2025)

ABEAM TO ST. MARTIN'S LIGHT HOUSE (20° 37' N, 092° 08' E)

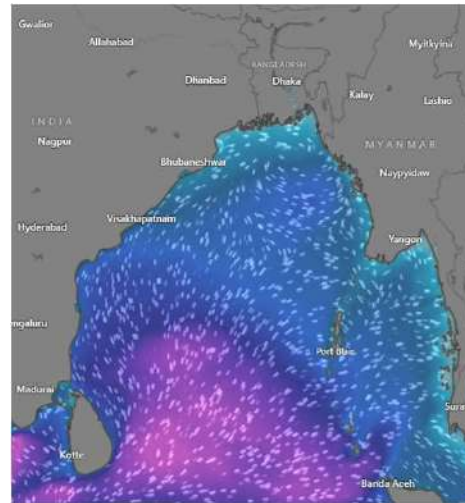


Date	Time	Air Temp (°C)		Sea Surface Temp (°C)	Baro Pressure (mbar)	Wind Direction	Wind Spd (kts)		Wave Ht (m)	Sea State	Humidity (%)	Prob of Rain (%)	Amount of Rain (mm)
		Max	Min				Gusting	Avg					
14-01-25 (Tuesday)	0001	27	18	23	1012	NNW	16	11	0.5	2	89	7	0.0
	0600			22	1014	N	18	12	0.6	3	91	6	0.0
	1200			24	1012	NNW	15	11	0.5	2	65	2	0.0
	1800			22	1013	NW	21	15	0.8	3	80	3	0.0
15-01-25 (Wednesday)	0001	27	18	23	1012	NNE	20	14	0.9	3	90	7	0.0
	0600			23	1014	N	21	15	0.8	3	91	6	0.0
	1200			24	1012	NNW	21	14	0.9	3	67	2	0.0
	1800			22	1013	NW	19	13	0.9	3	80	3	0.0
16-01-25 (Thursday)	0001	27	18	23	1012	NNW	18	13	0.9	3	88	7	0.0
	0600			22	1014	N	18	12	1.0	3	90	6	0.0
	1200			23	1012	NNE	16	8	1.0	3	67	2	0.0
	1800			21	1013	NW	12	9	1.0	3	80	3	0.0
17-01-25 (Friday)	0001	27	18	23	1012	NNW	13	9	1.0	3	90	7	0.0
	0600			21	1014	N	17	10	0.9	3	93	6	0.0
	1200			24	1012	NNE	15	8	0.9	3	66	2	0.0
	1800			21	1013	NW	12	9	0.9	3	80	3	0.0

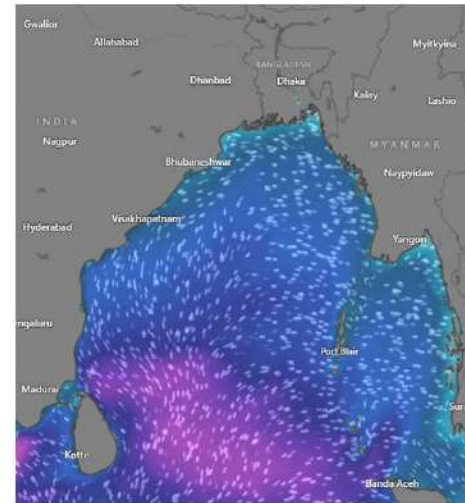
14 Jan 2025



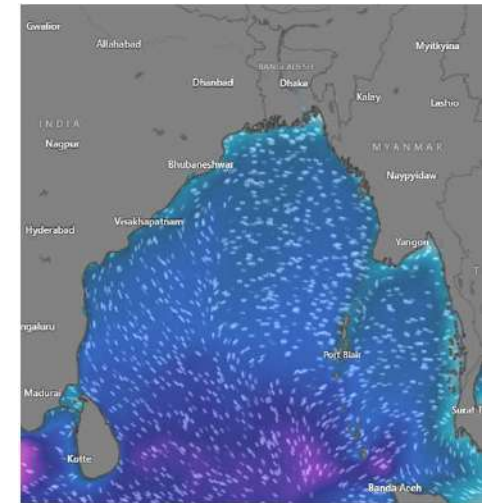
15 Jan 2025



16 Jan 2025



17 Jan 2025



Significant wave height (m)



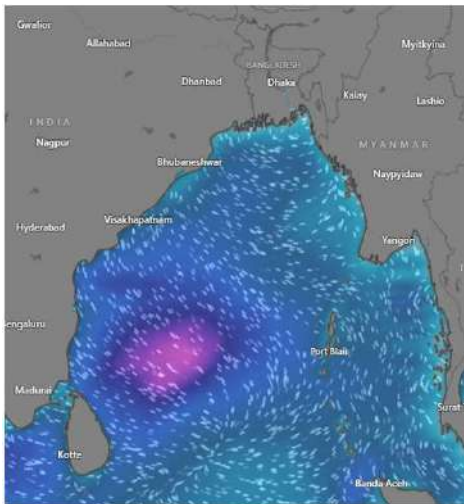
MARINE WEATHER FORECAST (10 to 17 Jan 2025)

PAYRA FAIRWAY (21° 22' N, 090° 6' E)

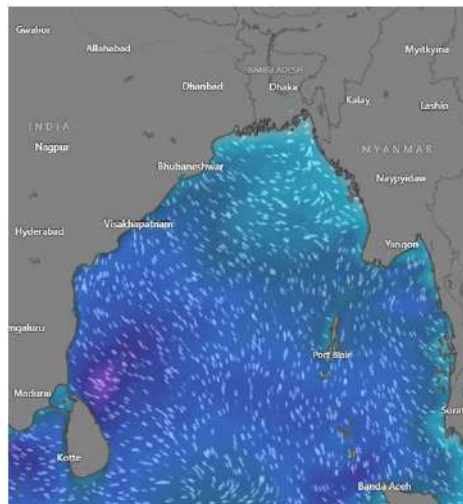


Date	Time	Air Temp (°C)		Sea Surface Temp (°C)	Baro Pressure (mbar)	Wind Direction	Wind Spd (kts)		Wave Ht (m)	Sea State	Humidity (%)	Prob of Rain (%)	Amount of Rain (mm)
		Max	Min				Gusting	Avg					
10-01-25 (Friday)	0001	25	15	23	1013	NNE	12	7	0.6	3	89	7	0.0
	0600			21	1015	NE	13	10	0.6	3	91	5	0.0
	1200			24	1011	NNW	15	12	0.6	3	64	6	0.0
	1800			22	1012	NW	14	10	0.6	3	82	4	0.0
11-01-25 (Saturday)	0001	25	15	23	1013	NNE	13	11	0.6	3	87	7	0.0
	0600			21	1015	NNW	14	12	0.6	3	90	5	0.0
	1200			24	1011	NNW	13	11	0.6	3	64	6	0.0
	1800			22	1012	NW	12	9	0.5	2	82	4	0.0
12-01-25 (Sunday)	0001	25	15	23	1013	NNE	14	10	0.6	2	88	7	0.0
	0600			22	1015	NE	15	13	0.7	3	91	8	0.0
	1200			24	1011	NNW	15	12	0.8	3	66	6	0.0
	1800			21	1012	NW	14	11	0.7	3	80	8	0.0
12-01-25 (Monday)	0001	25	15	23	1013	NNE	14	10	0.6	2	90	7	0.0
	0600			22	1015	NNW	15	13	0.7	3	91	8	0.0
	1200			24	1011	NNW	15	12	0.8	3	66	6	0.0
	1800			21	1012	NW	14	11	0.7	3	80	8	0.0

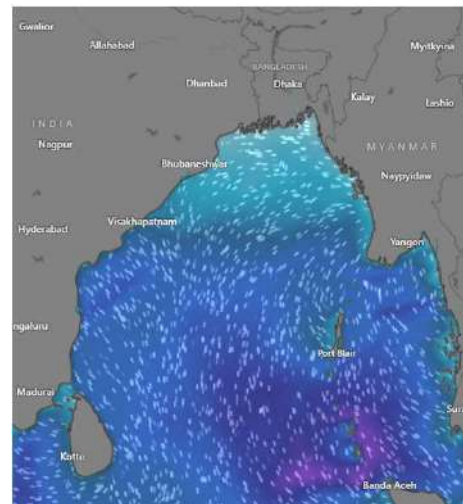
10 Jan 2025



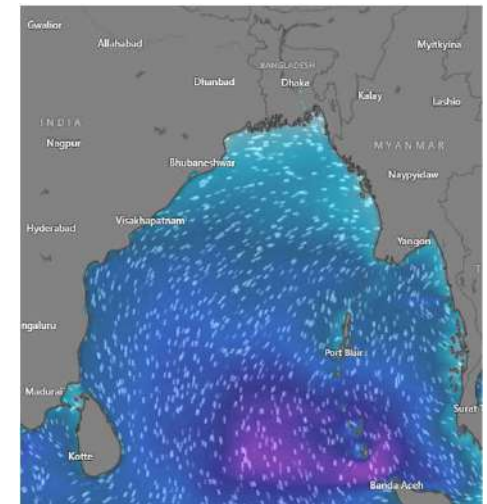
11 Jan 2025



12 Jan 2025



13 Jan 2025



Significant wave height (m)



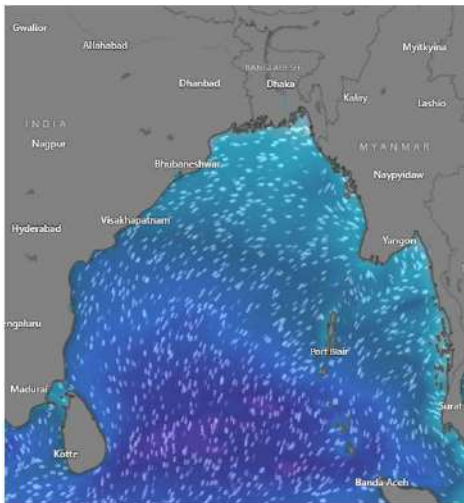
MARINE WEATHER FORECAST (10 to 17 Jan 2025)

PAYRA FAIRWAY (21° 22' N, 090° 6' E)

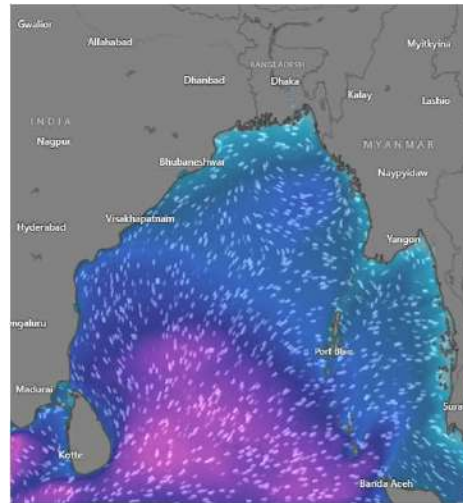


Date	Time	Air Temp (°C)		Sea Surface Temp (°C)	Baro Pressure (mbar)	Wind Direction	Wind Spd (kts)		Wave Ht (m)	Sea State	Humidity (%)	Prob of Rain (%)	Amount of Rain (mm)
		Max	Min				Gusting	Avg					
14-01-25 (Tuesday)	0001	25	16	23	1012	NNW	12	9	0.6	3	90	8	0.0
	0600			22	1015	NW	13	10	0.6	3	93	7	0.0
	1200			24	1012	NNE	14	11	0.6	3	67	2	0.0
	1800			22	1013	NNE	15	10	0.6	3	81	5	0.0
15-01-25 (Wednesday)	0001	26	16	23	1012	NNW	15	12	0.6	3	90	8	0.0
	0600			22	1015	NNE	16	13	0.6	3	92	5	0.0
	1200			24	1012	NNE	16	14	1.1	3	65	3	0.0
	1800			22	1013	N	17	12	1.1	3	82	4	0.0
16-01-25 (Thursday)	0001	26	16	23	1012	NNW	18	10	1.1	3	89	8	0.0
	0600			22	1015	NNE	17	12	1.0	3	90	5	0.0
	1200			24	1012	NW	15	9	0.9	3	67	3	0.0
	1800			22	1013	NNE	10	8	0.8	3	81	4	0.0
17-01-25 (Friday)	0001	26	16	23	1012	NNW	18	10	1.1	3	90	8	0.0
	0600			22	1015	NE	17	12	1.0	3	91	5	0.0
	1200			24	1012	NNE	15	9	0.9	3	65	3	0.0
	1800			22	1013	NNE	10	8	0.8	3	81	4	0.0

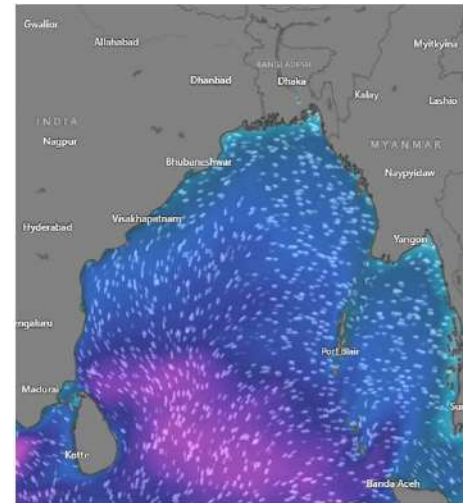
14 Jan 2025



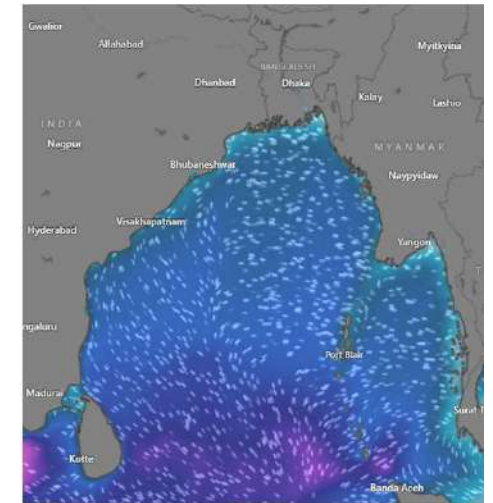
15 Jan 2025



16 Jan 2025



17 Jan 2025



Significant wave height (m)



MARINE WEATHER FORECAST (10 to 17 Jan 2025)

MONGLA FAIRWAY (21° 26' N, 089° 34' E)



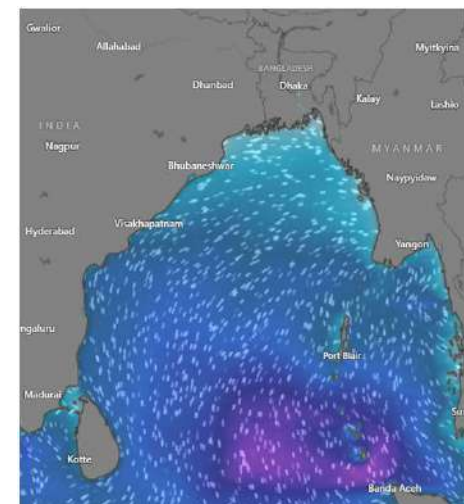
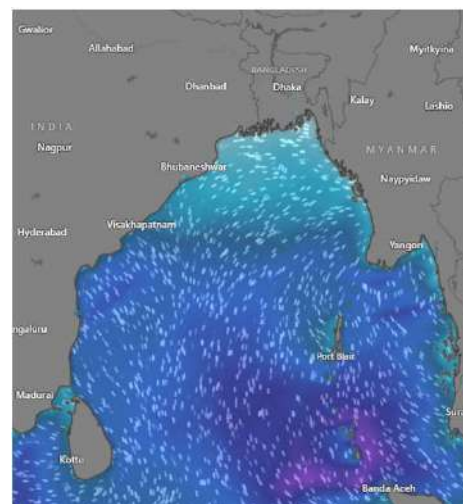
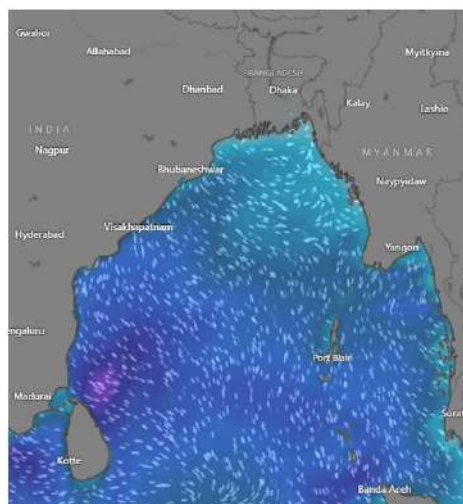
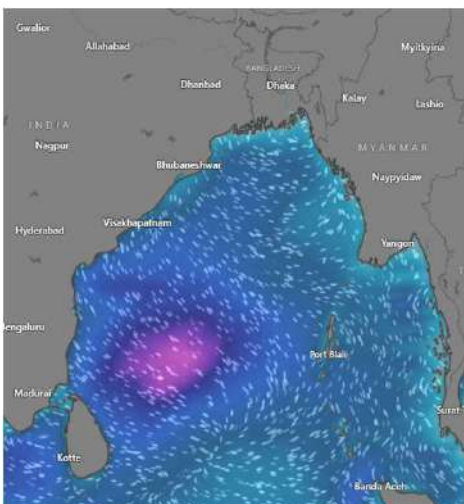
Date	Time	Air Temp (°C)		Sea Surface Temp (°C)	Baro Pressure (mbar)	Wind Direction	Wind Spd (kts)		Wave Ht (m)	Sea State	Humidity (%)	Prob of Rain (%)	Amount of Rain (mm)
		Max	Min				Gusting	Avg					
10-01-25 (Friday)	0001	25	16	23	1013	NNE	11	8	0.5	2	88	8	0.0
	0600			22	1015	N	13	10	0.6	3	91	7	0.0
	1200			24	1013	NNE	11	7	0.5	2	65	3	0.0
	1800			22	1014	NNW	12	9	0.5	2	72	5	0.0
11-01-25 (Saturday)	0001	25	16	23	1013	NNE	9	5	0.5	2	87	7	0.0
	0600			22	1015	NE	13	10	0.6	3	91	6	0.0
	1200			24	1013	NNE	12	8	0.5	2	67	2	0.0
	1800			22	1014	NNW	13	9	0.5	2	76	6	0.0
12-01-25 (Sunday)	0001	25	16	23	1013	NNW	12	7	0.6	3	88	8	0.0
	0600			22	1015	NNE	13	9	0.6	3	91	7	0.0
	1200			24	1013	NNE	14	10	0.6	3	67	4	0.0
	1800			22	1014	NNE	13	11	0.6	3	76	6	0.0
13-01-25 (Monday)	0001	25	16	23	1013	NNW	12	7	0.6	3	89	7	0.0
	0600			22	1015	NNE	11	9	0.6	3	92	6	0.0
	1200			24	1013	N	13	10	0.6	3	64	2	0.0
	1800			22	1014	NNW	14	11	0.6	3	71	6	0.0

10 Jan 2025

11 Jan 2025

12 Jan 2025

13 Jan 2025



Significant wave height (m)

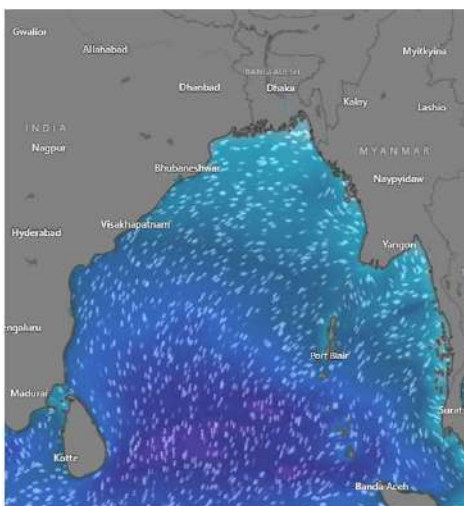


MARINE WEATHER FORECAST (10 to 17 Jan 2025) MONGLA FAIRWAY (21° 26' N, 089° 34' E)

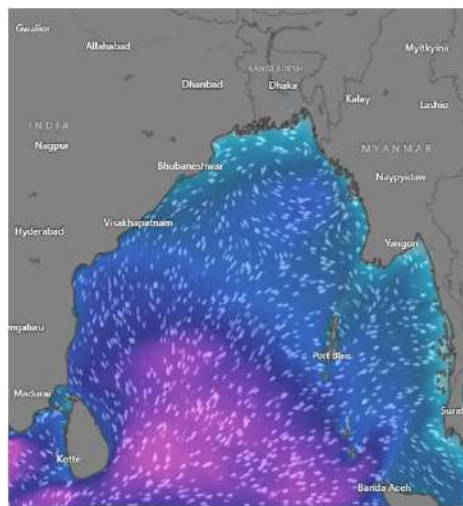


Date	Time	Air Temp (°C)		Sea Surface Temp (°C)	Baro Pressure (mbar)	Wind Direction	Wind Spd (kts)		Wave Ht (m)	Sea State	Humidity (%)	Prob of Rain (%)	Amount of Rain (mm)
		Max	Min				Gusting	Avg					
14-01-25 (Tuesday)	0001	26	16	23	1012	NNW	10	8	0.7	3	89	8	0.0
	0600			22	1015	NE	14	9	0.7	3	91	7	0.0
	1200			24	1012	NNW	12	7	0.6	3	67	3	0.0
	1800			22	1013	NNE	13	9	0.6	3	82	7	0.0
15-01-25 (Wednesday)	0001	26	16	23	1012	NNE	15	12	0.9	3	89	8	0.0
	0600			22	1015	N	17	13	1.0	3	91	7	0.0
	1200			24	1012	NNW	15	12	1.0	3	76	2	0.0
	1800			22	1013	NNE	15	13	1.0	3	82	7	0.0
16-01-25 (Thursday)	0001	26	16	23	1012	NNW	17	14	0.9	3	89	9	0.0
	0600			22	1015	N	15	14	0.9	3	91	6	0.0
	1200			24	1012	NNW	16	12	0.9	3	76	7	0.0
	1800			21	1013	NNW	16	14	0.9	3	82	8	0.0
17-01-25 (Friday)	0001	26	16	23	1012	NNW	17	12	0.8	3	90	8	0.0
	0600			22	1015	NNE	15	10	0.8	3	92	7	0.0
	1200			24	1012	NNE	16	13	0.8	3	68	3	0.0
	1800			21	1013	NNW	16	11	0.9	3	81	5	0.0

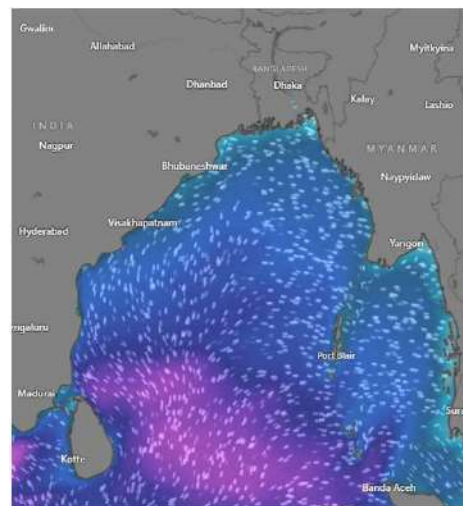
14 Jan 2025



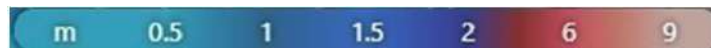
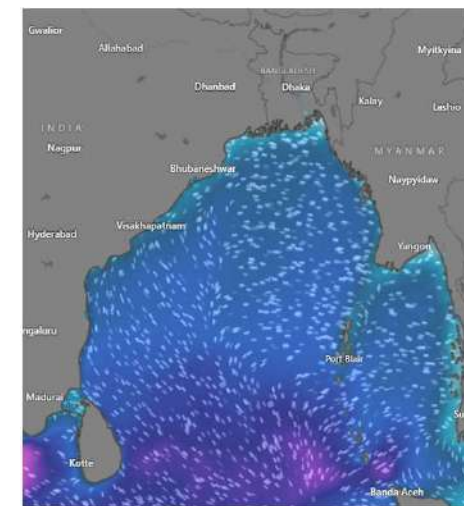
15 Jan 2025



16 Jan 2025



17 Jan 2025



Significant wave height (m)



MARINE WEATHER FORECAST (10 to 17 Jan 2025)

OUTER EEZ (18° 48' N, 090° 30' E)



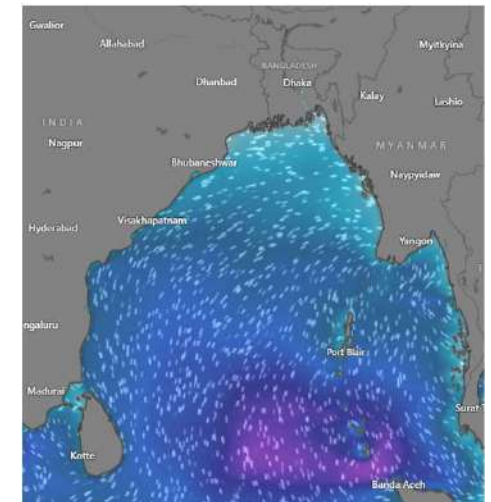
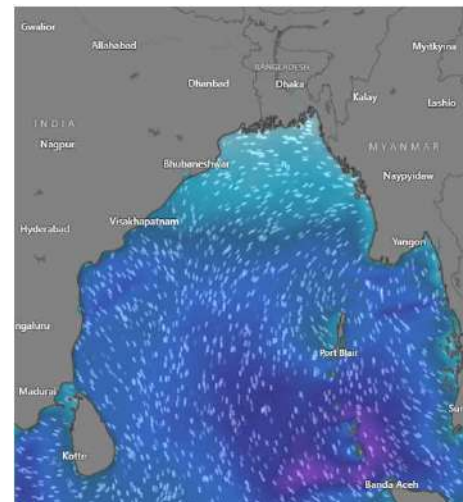
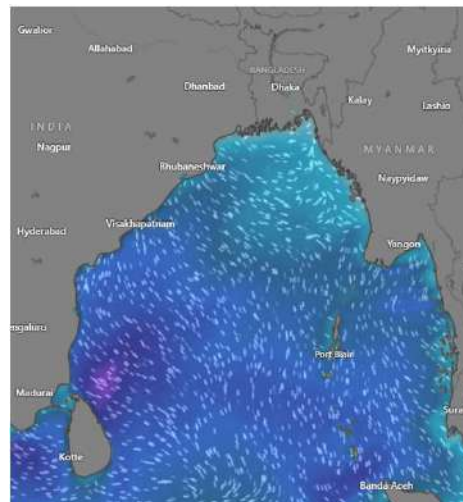
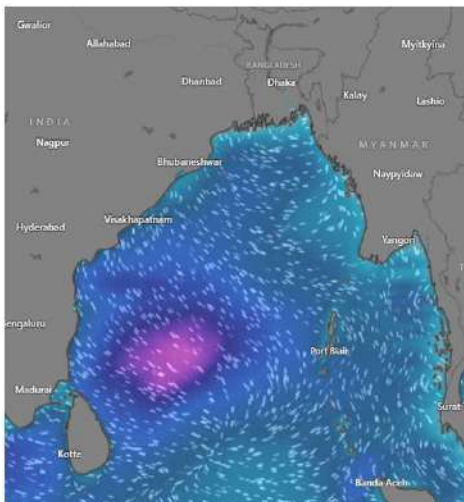
Date	Time	Air Temp (°C)		Sea Surface Temp (°C)	Baro Pressure (mbar)	Wind Direction	Wind Spd (kts)		Wave Ht (m)	Sea State	Humidity (%)	Prob of Rain (%)	Amount of Rain (mm)
		Max	Min				Gusting	Avg					
10-01-25 (Friday)	0001	26	18	24	1013	NNE	14	10	0.9	3	91	8	0.0
	0600			23	1015	NNE	15	11	1.0	3	93	7	0.0
	1200			24	1013	NE	18	12	1.1	3	64	2	0.0
	1800			23	1014	NNE	16	11	0.9	3	71	4	0.0
11-01-25 (Saturday)	0001	26	18	24	1013	NNE	12	8	0.8	3	90	8	0.0
	0600			23	1015	N	14	9	0.6	3	92	7	0.0
	1200			24	1013	NNE	15	10	0.6	3	64	6	0.0
	1800			23	1014	NNE	14	9	0.6	3	76	8	0.0
12-01-25 (Sunday)	0001	26	18	24	1013	N	12	7	0.6	3	90	5	0.0
	0600			23	1015	NE	14	8	0.6	3	92	6	0.0
	1200			24	1013	NE	15	10	0.6	3	68	3	0.0
	1800			23	1014	NNE	11	9	0.6	3	81	7	0.0
13-01-25 (Monday)	0001	26	18	24	1013	N	12	8	0.6	3	89	5	0.0
	0600			23	1015	NE	14	8	0.6	3	92	6	0.0
	1200			24	1013	NE	15	10	0.6	3	65	3	0.0
	1800			23	1014	NNE	11	7	0.6	3	81	7	0.0

10 Jan 2025

11 Jan 2025

12 Jan 2025

13 Jan 2025



Significant wave height (m)



MARINE WEATHER FORECAST (10 to 17 Jan 2025) OUTER EEZ (18° 48' N, 090° 30' E)



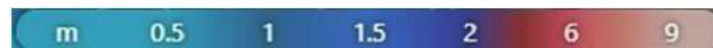
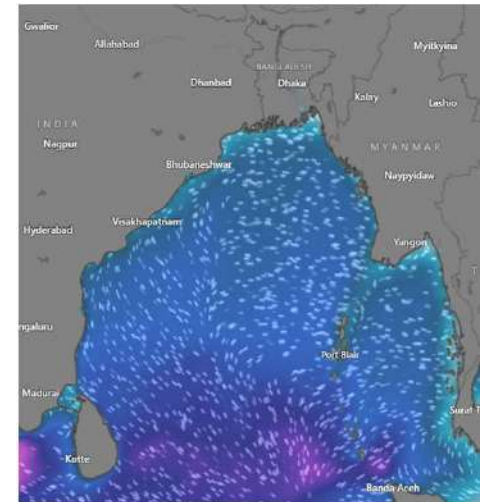
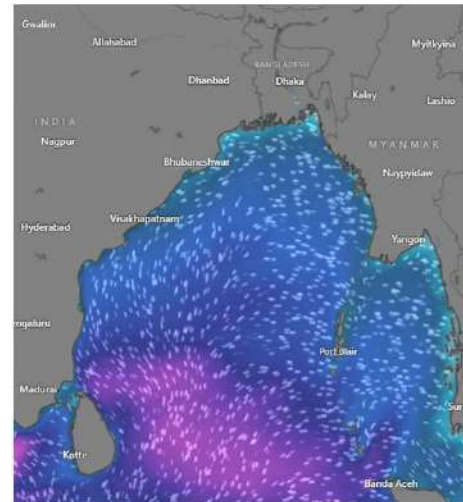
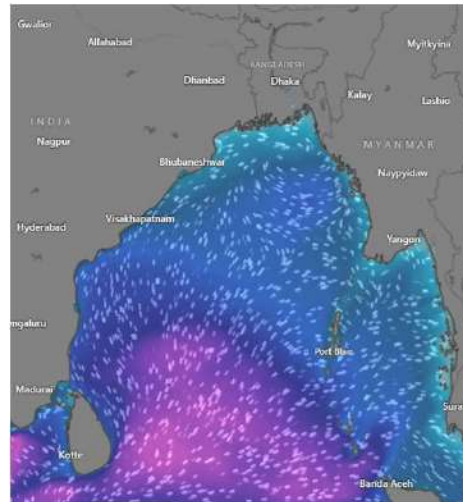
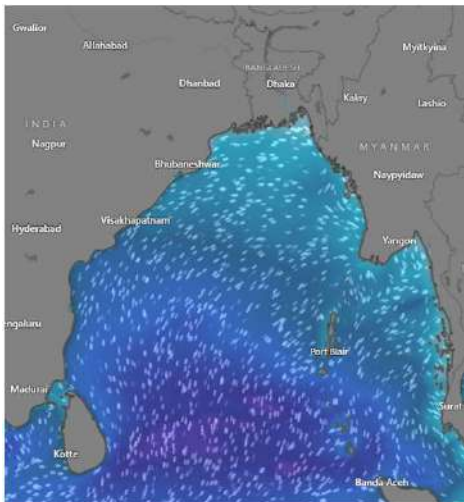
Date	Time	Air Temp (°C)		Sea Surface Temp (°C)	Baro Pressure (mbar)	Wind Direction	Wind Spd (kts)		Wave Ht (m)	Sea State	Humidity (%)	Prob of Rain (%)	Amount of Rain (mm)
		Max	Min				Gusting	Avg					
14-01-25 (Tuesday)	0001	26	17	24	1014	NE	10	8	0.6	3	89	8	0.0
	0600			22	1015	NNE	13	10	0.6	3	91	7	0.0
	1200			24	1013	NW	14	10	0.7	3	64	3	0.0
	1800			23	1014	NNE	14	11	0.9	3	76	6	0.0
15-01-25 (Wednesday)	0001	26	17	24	1014	NE	19	14	1.3	4	90	7	0.0
	0600			22	1016	NNE	18	15	1.4	4	93	5	0.0
	1200			24	1013	NW	20	16	1.4	4	66	2	0.0
	1800			22	1014	N	19	14	1.3	4	81	7	0.0
16-01-25 (Thursday)	0001	26	17	24	1014	NNW	18	10	1.3	4	89	6	0.0
	0600			22	1016	NNE	16	12	1.3	4	92	7	0.0
	1200			24	1013	NE	18	10	1.4	4	68	5	0.0
	1800			22	1014	NNE	13	9	1.3	4	82	4	0.0
17-01-25 (Friday)	0001	26	17	24	1014	NNW	18	10	1.3	4	90	8	0.0
	0600			22	1016	NE	16	12	1.3	4	92	7	0.0
	1200			24	1013	NNE	18	10	1.3	4	69	2	0.0
	1800			23	1014	NNE	13	8	1.2	3	82	4	0.0

14 Jan 2025

15 Jan 2025

16 Jan 2025

17 Jan 2025



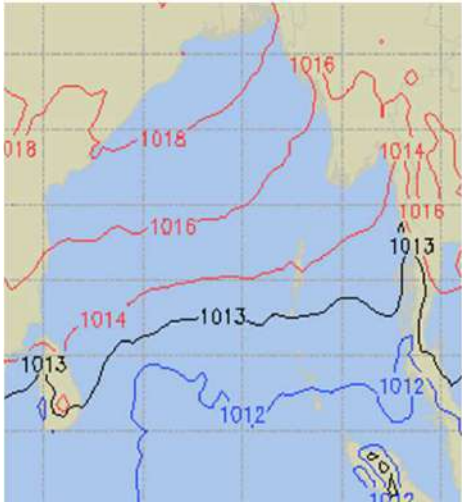
Significant wave height (m)



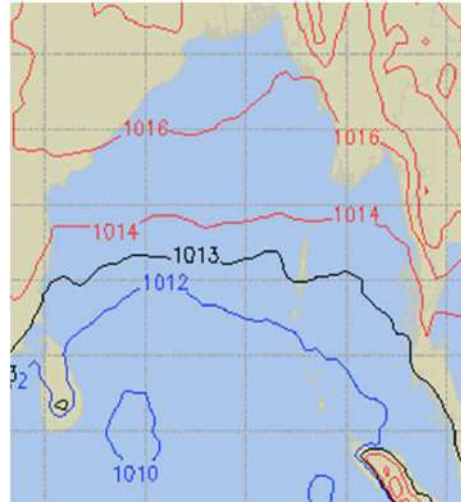
PREDICTED SURFACE PRESSURE FORECAST (10 to 16 Jan 2025)



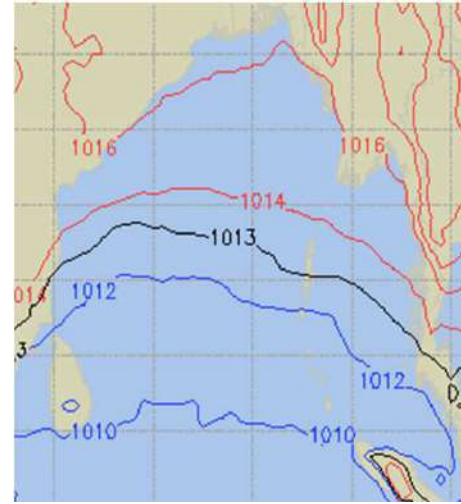
10 Jan 2024



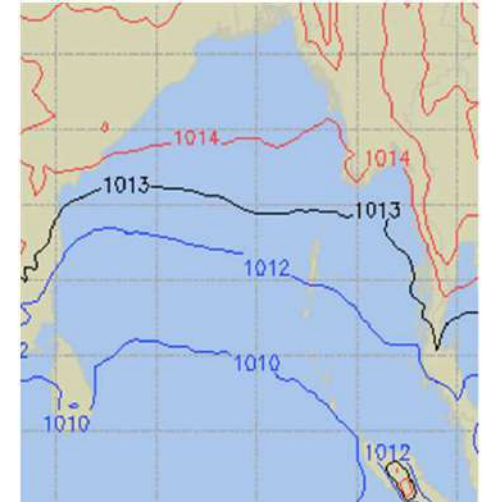
11 Jan 2024



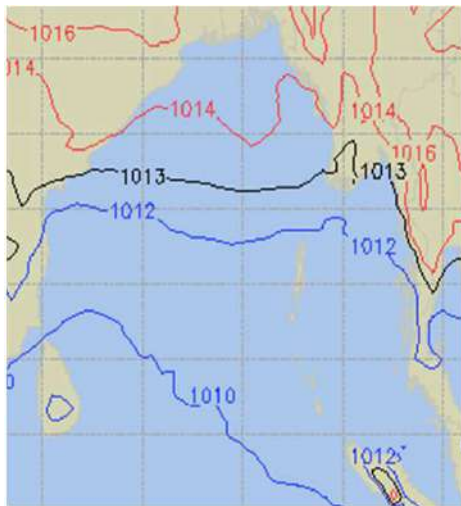
12 Jan 2025



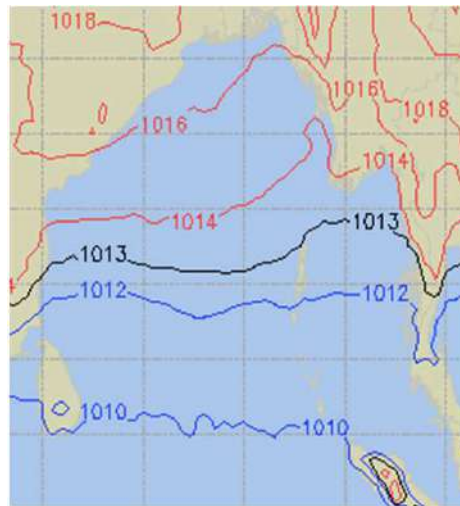
13 Jan 2025



14 Jan 2025



15 Jan 2025



16 Jan 2025

