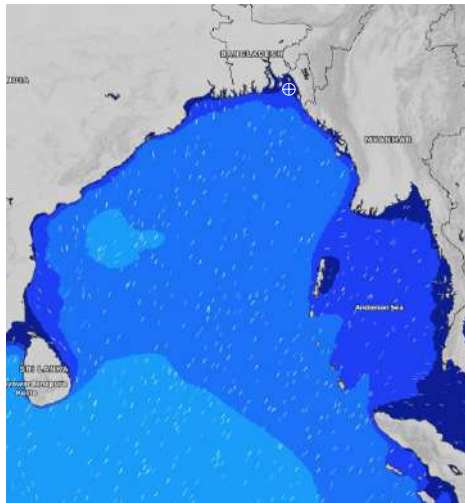


# MARINE WEATHER FORECAST- NEAR AUTHORITY BUOY (Lat 22° 12' N, Long 091° 38' E)

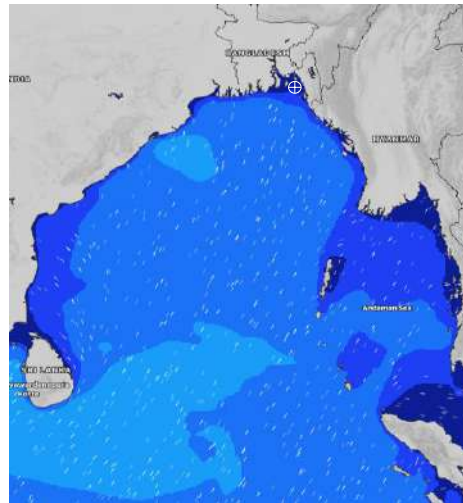
**DATE : 09 to 16 July 2024**

Date	Time	Max Wind Spd (kts)	Wind Direction	Wave Ht (m)	Sea State	Baro Pressure	Air Temp		Sea Surface Temp	Humidity (%)	Prb of Rain (%)	Sea State	Wave Ht (m)
							Max	Min					
09-07-24	0001	17	SE	0.3	2	1006	30	26	28	91%	47% (0.4 mm)	0	0
	0600	19	SSE	0.3	2	1005			27	91%	16% (0.0 mm)	1	0 - 0.1
	1200	16	S	0.3	2	1006			29	84%	39% (0.2 mm)	2	0.1 - 0.5
	1800	16	S	0.3	2	1005			28	89%	48% (0.3 mm)	3	0.5 - 1.25
10-07-24	0001	15	SSE	0.3	2	1007	30	26	28	93%	71% (0.7 mm)	4	1.25 - 2.5
	0600	13	SSE	0.3	2	1007			27	94%	73% (0.5 mm)	5	2.5 - 4.0
	1200	14	SSW	0.3	2	1007			28	87%	65% (0.8 mm)	6	4.0 - 6.0
	1800	16	S	0.3	2	1005			28	89%	53% (0.4 mm)	7	6.0 - 9.0
11-07-24	0001	16	SSE	0.3	2	1006	28	26	27	93%	68% (0.6 mm)	8	9.0 - 14.0
	0600	18	SSE	0.3	2	1005			27	95%	79% (0.5 mm)	9	Over 14.0
	1200	21	S	0.4	2	1005			28	92%	84% (0.8 mm)		
	1800	20	SSE	0.4	2	1003			27	91%	60% (0.6 mm)		
12-07-24	0001	20	SSE	0.4	2	1004	29	26	26	93%	73% (0.6 mm)		
	0600	24	SSE	0.4	2	1003			26	94%	65% (0.5 mm)		
	1200	21	S	0.5	2	1002			28	89%	60% (0.4 mm)		
	1800	22	SSE	0.5	2	1001			27	90%	50% (0.5 mm)		

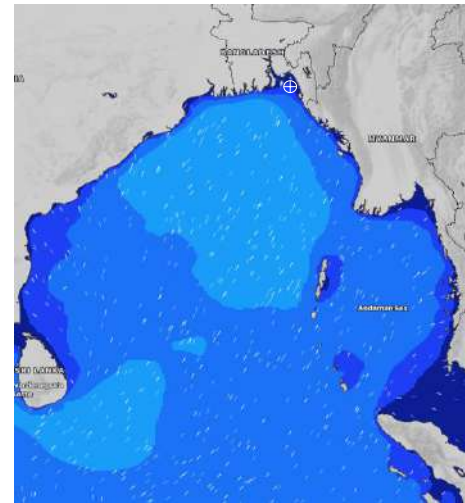
**09 July 24 Tue (Probability 98%)**



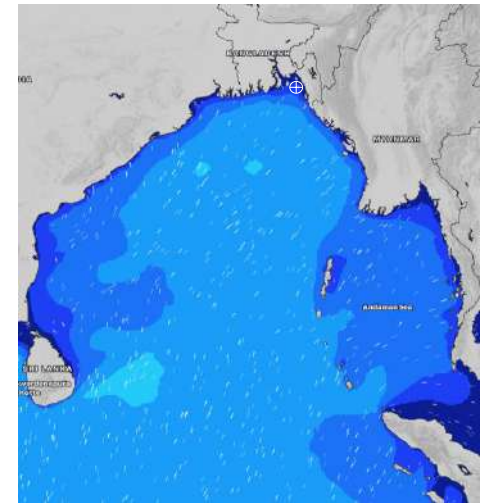
**10 July 24 Wed (Probability 95%)**



**11 July 24 Thu Probability 90%**



**12 July 24 Fri (Probability 80%)**



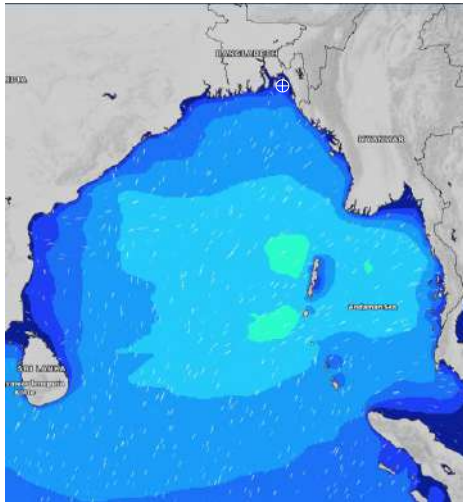
Significant wave height (m)

# MARINE WEATHER FORECAST- NEAR AUTHORITY BUOY (Lat 22° 12' N, Long 091° 38' E)

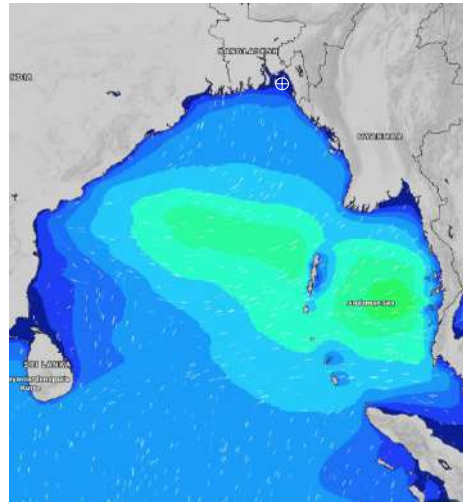
**DATE : 09 to 16 July 2024**

Date	Time	Max Wind Spd (kts)	Wind Direction	Wave Ht (m)	Sea State	Baro Pressure	Air Temp		Sea Surface Temp	Humidity (%)	Prob of Rain (%)	Sea State	Wave Ht (m)
							Max	Min					
13-07-24	0001	20	SE	0.4	2	1002	31	27	26	93%	48% (0.6 mm)	0	0
	0600	21	SSE	0.3	2	1001			27	93%	40% (0.4 mm)	1	0 - 0.1
	1200	19	S	0.4	2	1000			29	79%	34% (0.2 mm)	2	0.1 - 0.5
	1800	20	S	0.4	2	998			28	86%	33% (0.2 mm)	3	0.5 - 1.25
14-07-24	0001	18	SSE	0.3	2	1000	32	27	27	90%	49% (0.6 mm)	4	1.25 - 2.5
	0600	15	SE	0.3	2	1000			27	91%	45% (0.4 mm)	5	2.5 - 4.0
	1200	10	SW	0.2	2	999			28	74%	34% (0.2 mm)	6	4.0 - 6.0
	1800	12	SW	0.2	2	998			29	85%	33% (0.2 mm)	7	6.0 - 9.0
15-07-24	0001	14	SSE	0.2	2	1000	32	27	28	90%	36% (0.6 mm)	8	9.0 - 14.0
	0600	6	E	0.1	1	1000			27	90%	47% (0.4 mm)	9	Over 14.0
	1200	7	W	0.1	1	999			29	74%	34% (0.2 mm)		
	1800	9	WSW	0.1	1	997			29	86%	33% (0.2 mm)		
16-07-24	0001	3	SSW	0.1	1	1000	32	27	28	90%	51% (0.6 mm)		
	0600	5	NNE	0.1	1	999			27	93%	45% (0.4 mm)		
	1200	7	WNW	0.1	1	998			29	76%	34% (0.2 mm)		
	1800	23	SSW	0.4	2	997			29	85%	33% (0.2 mm)		

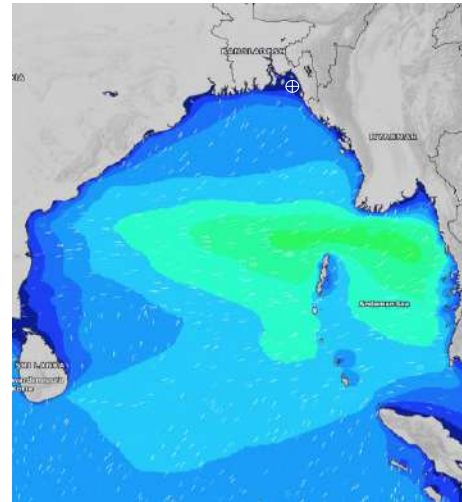
**13 July 24 Sat (Probability 70%)**



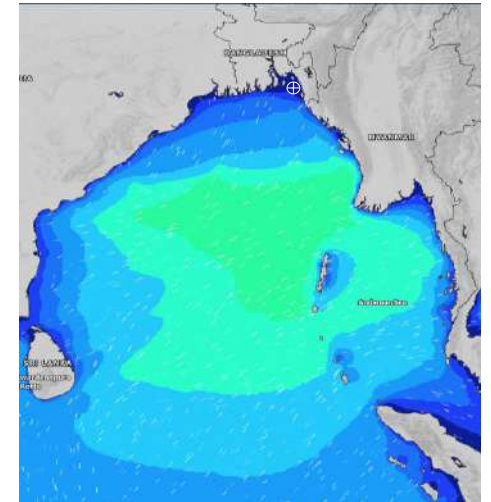
**14 July 24 Sun (Probability 60%)**



**15 July 24 Mon (Probability 50%)**



**16 July 24 Tue (Probability 50%)**



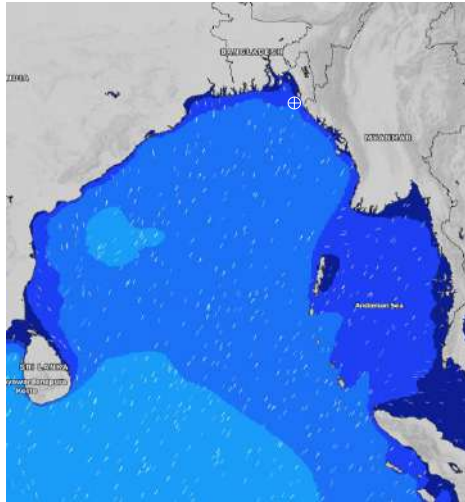
Significant wave height (m)

# MARINE WEATHER FORECAST- 20 NM WEST OF ELEPHANT POINT (Lat 21° 10' N, Long 091° 42' E)

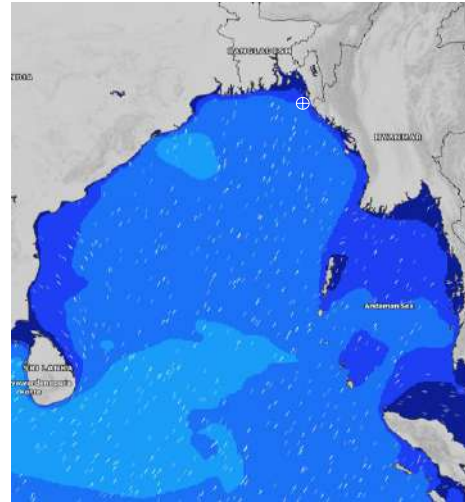
**DATE : 09 to 16 July 2024**

Date	Time	Max Wind Spd (kts)	Wind Direction	Wave Ht (m)	Sea State	Baro Pressure	Air Temp		Sea Surface Temp	Humidity (%)	Prob of Rain (%)	Sea State	Wave Ht (m)
							Max	Min					
09-07-24	0001	15	SSE	1.2	3	1005	30	26	28	90%	47% (0.3 mm)	0	0
	0600	16	SE	1.2	3	1005			28	90%	14% (0.0 mm)	1	0 - 0.1
	1200	16	SSE	1.2	3	1006			29	85%	67% (0.9 mm)	2	0.1 - 0.5
	1800	12	S	1.0	3	1005			29	88%	44% (0.4 mm)	3	0.5 - 1.25
10-07-24	0001	11	SSW	1.0	3	1007	29	26	28	90%	52% (0.5 mm)	4	1.25 - 2.5
	0600	10	SSE	1.0	3	1007			29	93%	69% (1.2 mm)	5	2.5 - 4.0
	1200	12	S	1.1	3	1007			29	88%	60% (0.6 mm)	6	4.0 - 6.0
	1800	12	SSW	1.1	3	1005			29	90%	57% (0.4 mm)	7	6.0 - 9.0
11-07-24	0001	10	S	1.1	3	1006	28	26	29	93%	76% (0.6 mm)	8	9.0 - 14.0
	0600	14	SSW	1.2	3	1005			27	95%	98% (1.1 mm)	9	Over 14.0
	1200	17	SSW	1.4	4	1005			28	93%	86% (1.3 mm)		
	1800	15	SSE	1.4	4	1004			27	93%	63% (0.6 mm)		
12-07-24	0001	18	SSE	1.5	4	1004	28	26	28	94%	74% (0.7 mm)		
	0600	18	SSE	1.6	4	1003			27	95%	85% (1.1 mm)		
	1200	17	S	1.6	4	1003			28	91%	80% (1.2 mm)		
	1800	16	SSE	1.6	4	1002			28	90%	57% (0.4 mm)		

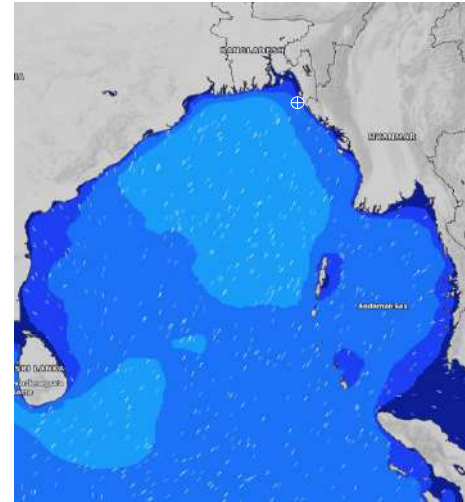
**09 July 24 Tue (Probability 98%)**



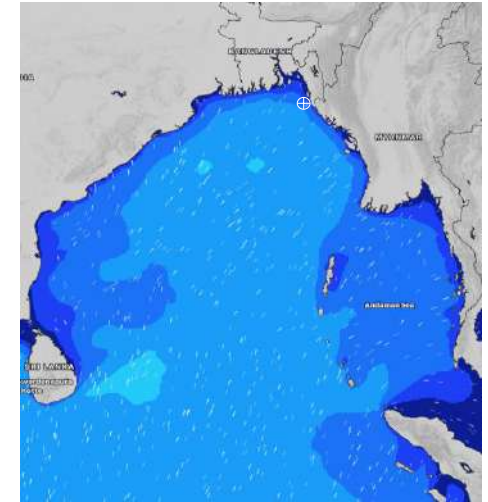
**10 July 24 Wed (Probability 95%)**



**11 July 24 Thu Probability 90%**



**12 July 24 Fri (Probability 80%)**



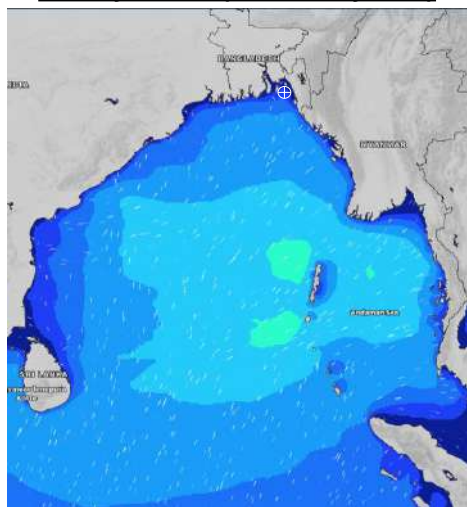
Significant wave height (m)

# MARINE WEATHER FORECAST- 20 NM WEST OF ELEPHANT POINT (Lat 21° 10' N, Long 091° 42' E)

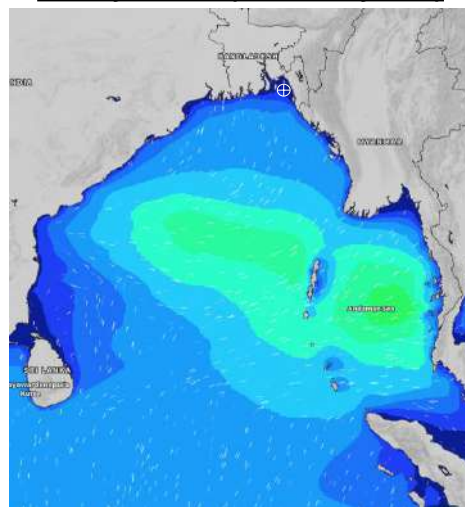
**DATE : 09 to 16 July 2024**

Date	Time	Max Wind Spd (kts)	Wind Direction	Wave Ht (m)	Sea State	Baro Pressure	Air Temp		Sea Surface Temp	Humidity (%)	Prob of Rain (%)	Sea State	Wave Ht (m)
							Max	Min					
13-07-24	0001	17	SSE	1.6	4	1002	30	26	28	93%	55% (0.3 mm)	0	0
	0600	18	SE	1.7	4	1001			27	93%	50% (0.5 mm)	1	0 - 0.1
	1200	20	SSE	1.8	4	1001			28	84%	51% (0.4 mm)	2	0.1 - 0.5
	1800	14	SSE	1.5	4	999			28	86%	32% (0.2 mm)	3	0.5 - 1.25
14-07-24	0001	15	SSE	1.5	4	1000	31	27	28	93%	62% (0.6 mm)	4	1.25 - 2.5
	0600	16	SE	1.5	4	999			28	92%	54% (0.5 mm)	5	2.5 - 4.0
	1200	16	SSE	1.6	4	1000			28	84%	54% (0.4 mm)	6	4.0 - 6.0
	1800	16	S	1.5	4	998			29	88%	32% (0.2 mm)	7	6.0 - 9.0
15-07-24	0001	13	SSE	1.5	4	1000	31	27	29	91%	63% (0.3 mm)	8	9.0 - 14.0
	0600	13	ESE	1.5	4	1000			28	92%	47% (0.5 mm)	9	Over 14.0
	1200	7	SSW	1.5	4	999			29	86%	44% (0.4 mm)		
	1800	7	SW	1.4	4	997			29	88%	28% (0.2 mm)		
16-07-24	0001	3	SSE	1.3	4	999	31	27	29	91%	60% (0.6 mm)		
	0600	8	ESE	1.3	4	999			29	92%	55% (0.5 mm)		
	1200	6	SSW	1.4	4	998			29	86%	54% (0.4 mm)		
	1800	27	SW	1.7	4	997			29	87%	33% (0.2 mm)		

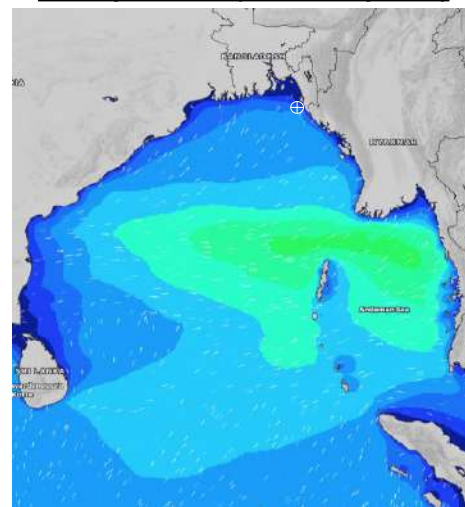
**13 July 24 Sat (Probability 70%)**



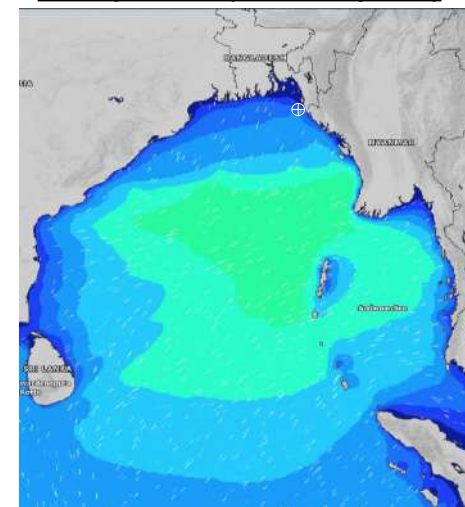
**14 July 24 Sun (Probability 60%)**



**15 July 24 Mon (Probability 50%)**



**16 July 24 Tue (Probability 50%)**



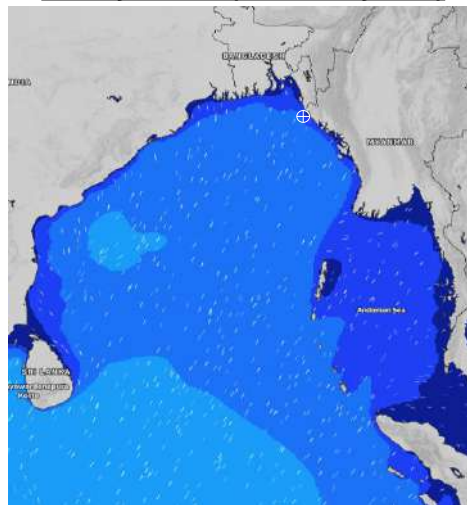
Significant wave height (m)

# MARINE WEATHER FORECAST- 15 NM WEST OF ST. MARTIN'S LIGHT HOUSE (Lat 20° 37'N, Long 092° 03'E)

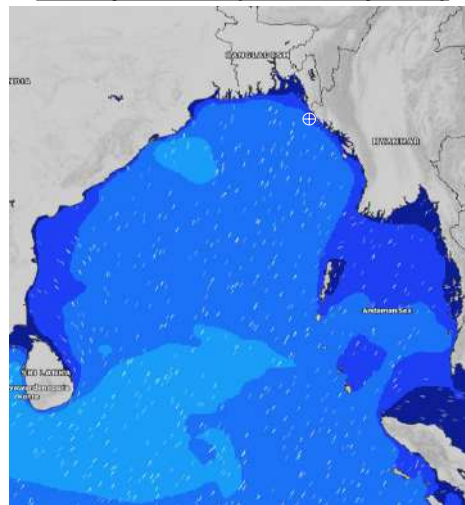
**DATE : 09 to 16 July 2024**

Date	Time	Max Wind Spd (kts)	Wind Direction	Wave Ht (m)	Sea State	Baro Pressure	Air Temp		Sea Surface Temp	Humidity (%)	Prob of Rain(%)	Sea State	Wave Ht (m)
							Max	Min					
09-07-24	0001	15	S	1.5	4	1006	29	26	29	91%	32% (0.2 mm)	0	0
	0600	8	S	1.4	4	1005			28	91%	16% (0.0 mm)	1	0 - 0.1
	1200	11	SSE	1.3	4	1007			29	87%	73% (0.5 mm)	2	0.1 - 0.5
	1800	11	SSW	1.3	4	1005			29	90%	57% (0.4 mm)	3	0.5 - 1.25
10-07-24	0001	9	SW	1.2	3	1008	29	26	29	91%	76% (0.6 mm)	4	1.25 - 2.5
	0600	7	SSW	1.3	4	1007			29	94%	98% (1.1 mm)	5	2.5 - 4.0
	1200	9	SSW	1.4	4	1008			29	90%	86% (1.3 mm)	6	4.0 - 6.0
	1800	12	SW	1.3	4	1005			29	91%	63% (0.6 mm)	7	6.0 - 9.0
11-07-24	0001	11	SW	1.3	4	1007	27	26	28	94%	74% (0.7 mm)	8	9.0 - 14.0
	0600	16	SSW	1.6	4	1005			28	96%	85% (1.1 mm)	9	Over 14.0
	1200	15	SSW	1.6	4	1006			27	94%	80% (1.2 mm)		
	1800	9	S	1.7	4	1004			26	94%	57% (0.4 mm)		
12-07-24	0001	13	SSE	1.8	4	1005	28	26	28	94%	78% (1.0 mm)		
	0600	12	S	1.8	4	1003			27	94%	89% (1.2 mm)		
	1200	13	S	1.8	4	1004			27	92%	80% (1.1 mm)		
	1800	16	S	1.9	4	1002			28	90%	69% (0.4 mm)		

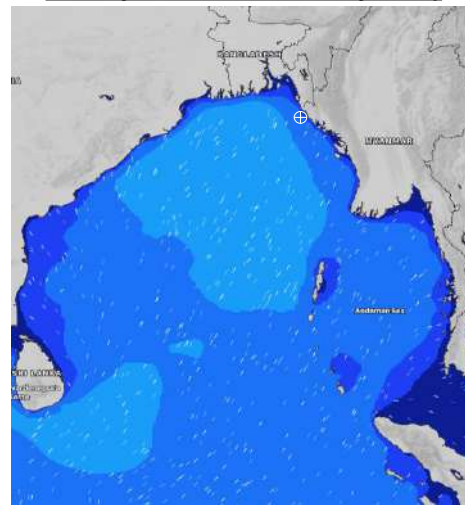
**09 July 24 Tue (Probability 98%)**



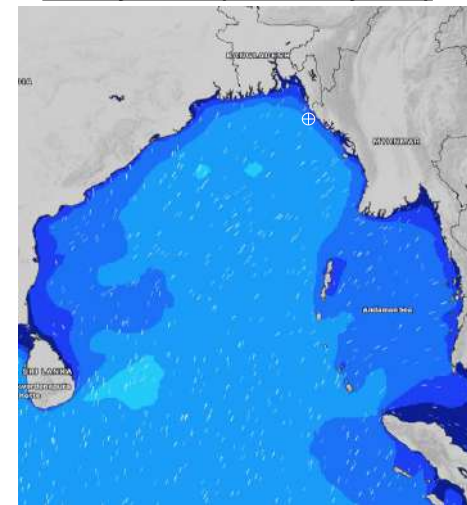
**10 July 24 Wed (Probability 95%)**



**11 July 24 Thu Probability 90%**



**12 July 24 Fri (Probability 80%)**



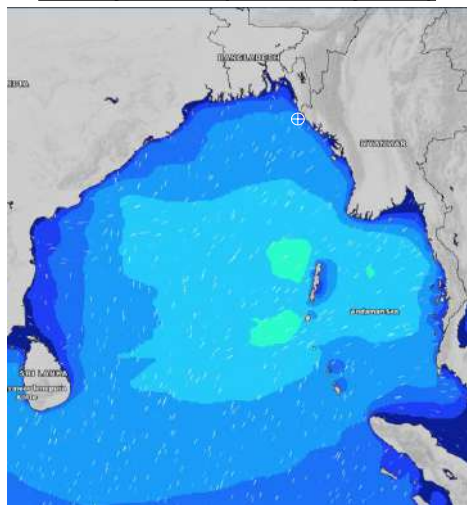
Significant wave height (m)

# MARINE WEATHER FORECAST- 15 NM WEST OF ST. MARTIN'S LIGHT HOUSE (Lat 20° 37' N, Long 092° 03' E)

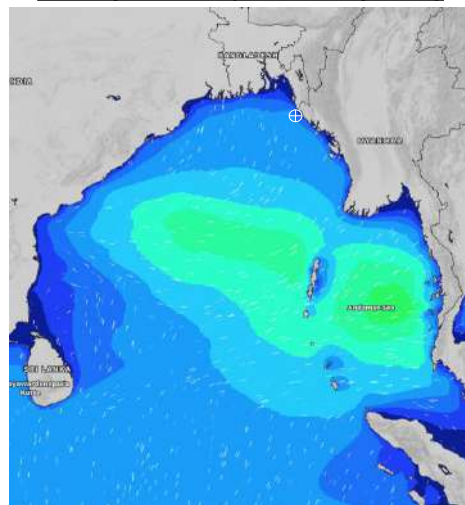
**DATE : 09 to 16 July 2024**

Date	Time	Max Wind Spd (kts)	Wind Direction	Wave Ht (m)	Sea State	Baro Pressure	Air Temp		Sea Surface Temp	Humidity (%)	Prob of Rain (%)	Sea State	Wave Ht (m)
							Max	Min					
13-07-24	0001	16	S	2.0	4	1003	29	26	28	93%	89% (0.8 mm)	0	0
	0600	12	SSE	2.0	4	1001			27	93%	82% (0.7 mm)	1	0 - 0.1
	1200	15	SE	2.0	4	1002			28	87%	70% (0.1 mm)	2	0.1 - 0.5
	1800	9	S	1.8	4	999			29	89%	43% (0.2 mm)	3	0.5 - 1.25
14-07-24	0001	9	SSE	1.8	4	1001	30	27	29	93%	64% (0.6 mm)	4	1.25 - 2.5
	0600	10	SSE	1.9	4	999			28	93%	75% (0.7 mm)	5	2.5 - 4.0
	1200	14	SE	2.0	4	1000			28	86%	43% (0.1 mm)	6	4.0 - 6.0
	1800	13	SE	1.9	4	998			29	89%	34% (0.2 mm)	7	6.0 - 9.0
15-07-24	0001	14	SSE	2.0	4	1000	30	27	29	93%	64% (0.6 mm)	8	9.0 - 14.0
	0600	11	SE	2.0	4	999			29	94%	75% (0.7 mm)	9	Over 14.0
	1200	14	ESE	2.1	4	1000			29	87%	43% (0.1 mm)		
	1800	14	S	1.9	4	997			29	89%	34% (0.2 mm)		
16-07-24	0001	13	SSE	1.8	4	999	30	27	29	91%	64% (0.6 mm)		
	0600	6	SE	1.9	4	998			29	92%	75% (0.7 mm)		
	1200	13	ESE	1.9	4	999			29	84%	43% (0.1 mm)		
	1800	25	S	2.2	4	997			29	87%	34% (0.2 mm)		

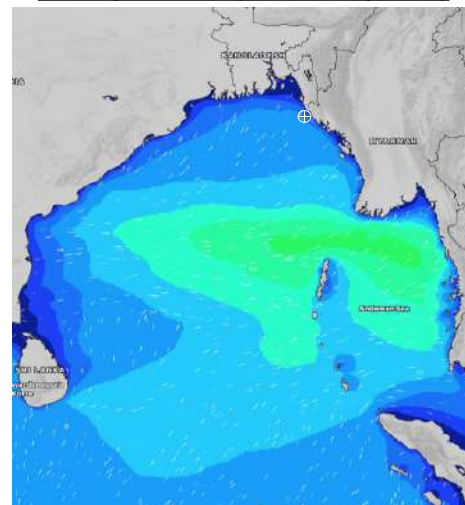
**13 July 24 Sat (Probability 70%)**



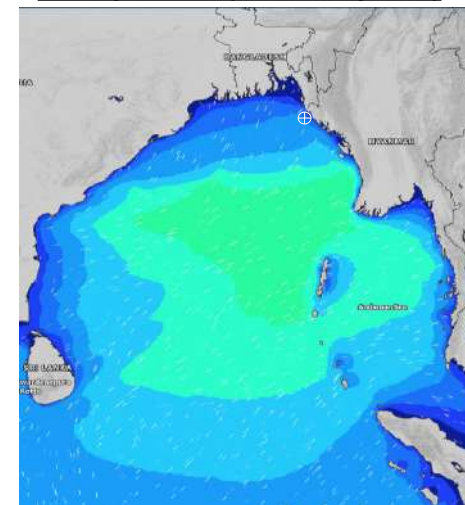
**14 July 24 Sun (Probability 60%)**



**15 July 24 Mon (Probability 50%)**



**16 July 24 Tue (Probability 50%)**



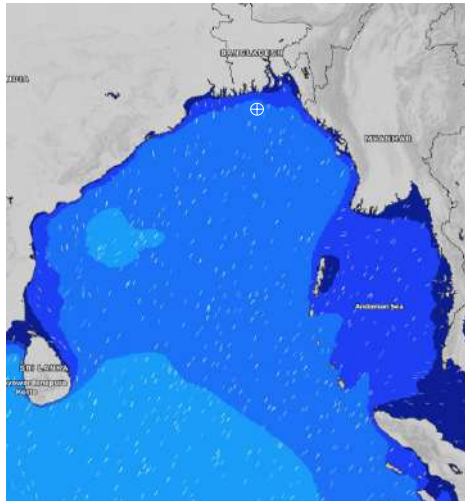
Significant wave height (m)

# MARINE WEATHER FORECAST- 40 NM ESE OF PAYRA FAIRWAY (Lat 21° 07' N, Long 090° 45' E)

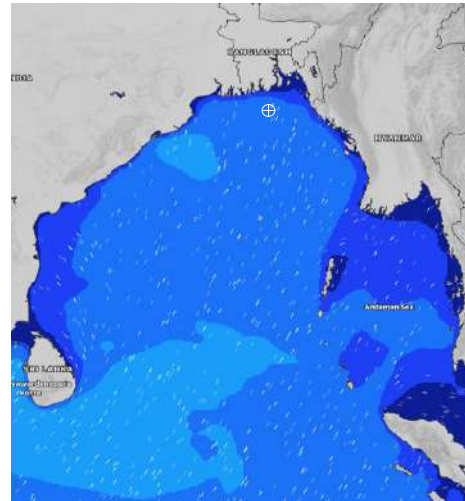
**DATE : 09 to 16 July 2024**

Date	Time	Max Wind Spd (kts)	Wind Direction	Wave Ht (m)	Sea State	Baro Pressure	Air Temp		Sea Surface Temp	Humidity (%)	Prob of Rain (%)	Sea State	Wave Ht (m)
							Max	Min					
09-07-24	0001	13	S	1.4	4	1005	30	28	29	87%	24% (0.0 mm)	0	0
	0600	9	S	1.3	4	1005			29	87%	14% (0.0 mm)	1	0 - 0.1
	1200	15	S	1.3	4	1006			29	83%	44% (0.5 mm)	2	0.1 - 0.5
	1800	13	SSW	1.3	4	1005			29	87%	35% (0.2 mm)	3	0.5 - 1.25
10-07-24	0001	16	SSW	1.3	4	1007	30	28	29	87%	33% (0.2 mm)	4	1.25 - 2.5
	0600	12	SSW	1.4	4	1006			29	89%	34% (0.2 mm)	5	2.5 - 4.0
	1200	14	SSW	1.4	4	1007			29	84%	40% (0.3 mm)	6	4.0 - 6.0
	1800	14	SW	1.5	4	1005			29	86%	16% (0.0 mm)	7	6.0 - 9.0
11-07-24	0001	16	SSW	1.5	4	1006	30	27	29	88%	66% (0.6 mm)	8	9.0 - 14.0
	0600	19	SW	1.8	4	1004			29	91%	75% (0.7 mm)	9	Over 14.0
	1200	22	SSW	2.0	4	1004			28	88%	66% (0.5 mm)		
	1800	19	SSW	2.0	4	1002			29	90%	46% (0.4 mm)		
12-07-24	0001	19	SSW	2.0	4	1002	29	27	29	91%	68% (0.6 mm)		
	0600	18	SSW	2.0	4	1002			27	92%	79% (0.7 mm)		
	1200	17	SSW	2.0	4	1002			27	89%	71% (0.7 mm)		
	1800	16	SSW	1.9	4	1001			28	89%	42% (0.4 mm)		

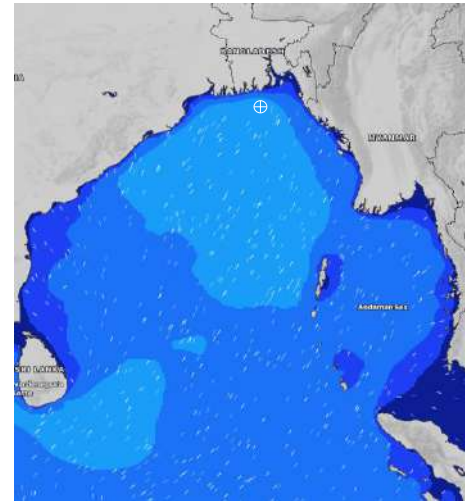
**09 July 24 Tue (Probability 98%)**



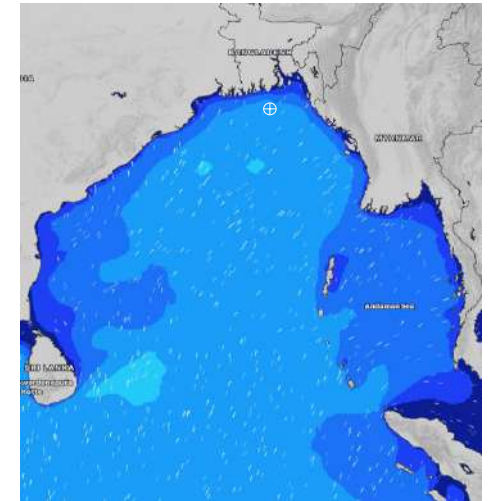
**10 July 24 Wed (Probability 95%)**



**11 July 24 Thu Probability 90%**



**12 July 24 Fri (Probability 80%)**



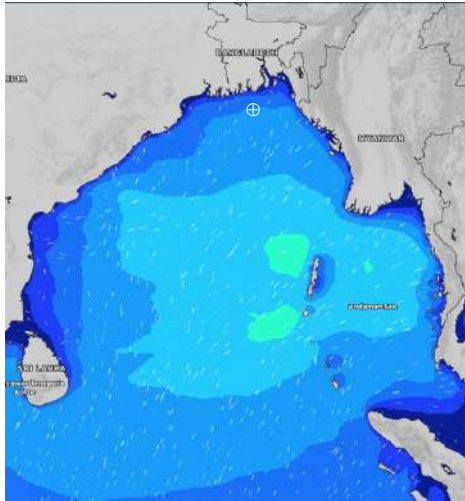
Significant wave height (m)

# MARINE WEATHER FORECAST- 40 NM ESE OF PAYRA FAIRWAY (Lat 21° 07' N, Long 090° 45' E)

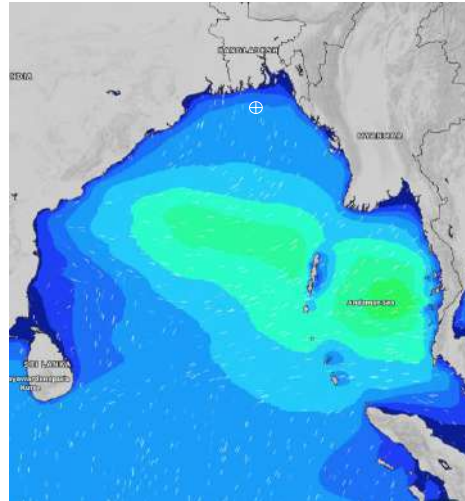
**DATE : 09 to 16 July 2024**

Date	Time	Max Wind Spd (kts)	Wind Direction	Wave Ht (m)	Sea State	Baro Pressure	Air Temp		Sea Surface Temp	Humidity (%)	Prob of Rain (%)	Sea State	Wave Ht (m)
							Max	Min					
13-07-24	0001	18	SSW	2.1	4	1001	30	28	28	91%	59% (0.4 mm)	0	0
	0600	14	SSW	2.0	4	1000			28	91%	63% (0.6 mm)	1	0 - 0.1
	1200	12	S	1.9	4	1000			28	86%	57% (0.4 mm)	2	0.1 - 0.5
	1800	10	SSS	1.8	4	998			29	86%	20% (0.0 mm)	3	0.5 - 1.25
14-07-24	0001	12	S	1.8	4	999	31	28	28	91%	61% (0.6 mm)	4	1.25 - 2.5
	0600	10	SSE	1.8	4	999			29	90%	44% (0.4 mm)	5	2.5 - 4.0
	1200	12	SSE	1.9	4	999			29	87%	43% (0.4 mm)	6	4.0 - 6.0
	1800	13	SSE	2.0	4	997			29	88%	24% (0.1 mm)	7	6.0 - 9.0
15-07-24	0001	11	SSE	2.0	4	999	31	28	29	91%	61% (0.6 mm)	8	9.0 - 14.0
	0600	12	ESE	2.0	4	999			29	90%	44% (0.4 mm)	9	Over 14.0
	1200	14	ESE	1.9	4	999			29	86%	43% (0.4 mm)		
	1800	11	SSE	1.8	4	997			29	89%	24% (0.1 mm)		
16-07-24	0001	10	SSE	1.8	4	999	31	28	29	91%	61% (0.6 mm)		
	0600	8	ESE	1.8	4	999			29	92%	44% (0.4 mm)		
	1200	9	ESE	1.8	4	999			29	85%	43% (0.4 mm)		
	1800	18	SSE	1.9	4	997			29	89%	24% (0.1 mm)		

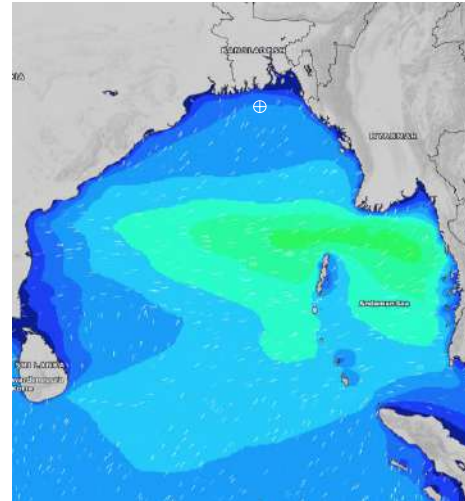
**13 July 24 Sat (Probability 70%)**



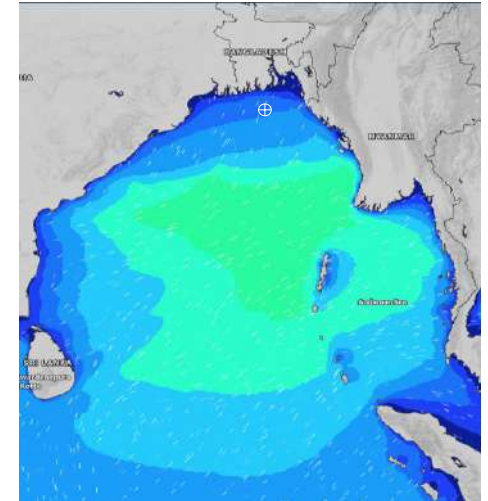
**14 July 24 Sun (Probability 60%)**



**15 July 24 Mon (Probability 50%)**



**16 July 24 Tue (Probability 50%)**



Significant wave height (m)

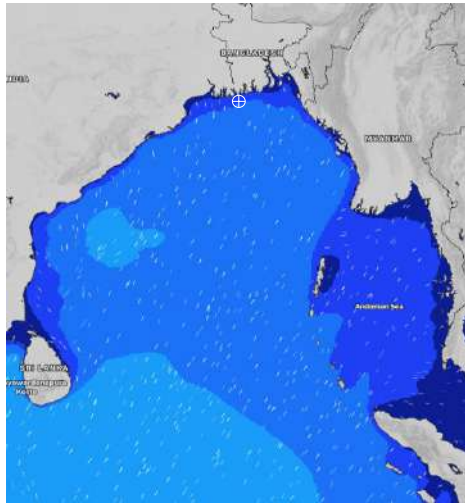


**MARINE WEATHER FORECAST- 10 NM SOUTH OF MONGLA FAIRWAY (Lat 21° 16' N, Long 089° 34' E)**

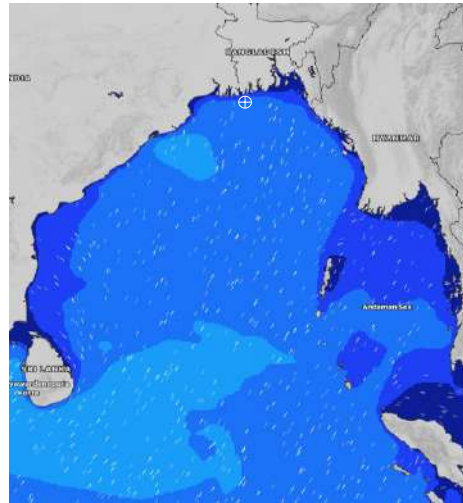
**DATE : 09 to 16 July 2024**

Date	Time	Max Wind Spd (kts)	Wind Direction	Wave Ht (m)	Sea State	Baro Pressure	Air Temp		Sea Surface Temp	Humidity (%)	Prob of Rain (%)	Sea State	Wave Ht (m)
							Max	Min					
09-07-24	0001	13	S	1.3	4	1004	32	27	29	88%	14% (0.0 mm)	0	0
	0600	12	S	1.3	4	1004			29	87%	15% (0.0 mm)	1	0 - 0.1
	1200	15	SSW	1.3	4	1006			29	79%	90% (1.8 mm)	2	0.1 - 0.5
	1800	15	SSW	1.3	4	1004			29	84%	21% (0.0 mm)	3	0.5 - 1.25
10-07-24	0001	17	SSW	1.4	4	1006	31	27	29	90%	21% (0.0 mm)	4	1.25 - 2.5
	0600	14	SSW	1.5	4	1006			29	91%	32% (0.2 mm)	5	2.5 - 4.0
	1200	17	SSW	1.5	4	1006			29	79%	62% (0.6 mm)	6	4.0 - 6.0
	1800	16	SW	1.3	4	1004			29	86%	16% (0.0 mm)	7	6.0 - 9.0
11-07-24	0001	19	SSW	1.6	4	1005	31	28	29	90%	21% (0.0 mm)	8	9.0 - 14.0
	0600	21	SSW	1.9	4	1003			29	91%	61% (0.4 mm)	9	Over 14.0
	1200	22	SSW	2.0	4	1003			29	83%	72% (0.7 mm)		
	1800	21	SSW	2.1	4	1001			29	90%	45% (0.3 mm)		
12-07-24	0001	17	SW	2.0	4	1002	30	28	29	92%	57% (0.4 mm)		
	0600	15	SSW	1.9	4	1001			29	95%	63% (0.6 mm)		
	1200	17	SSW	1.9	4	1001			29	88%	88% (1.1 mm)		
	1800	20	SSW	2.0	4	999			29	88%	32% (0.2 mm)		

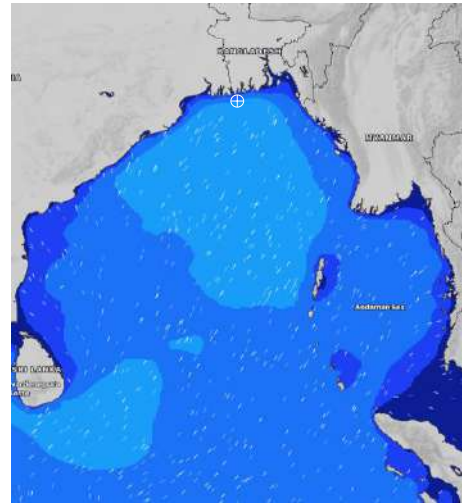
**09 July 24 Tue (Probability 98%)**



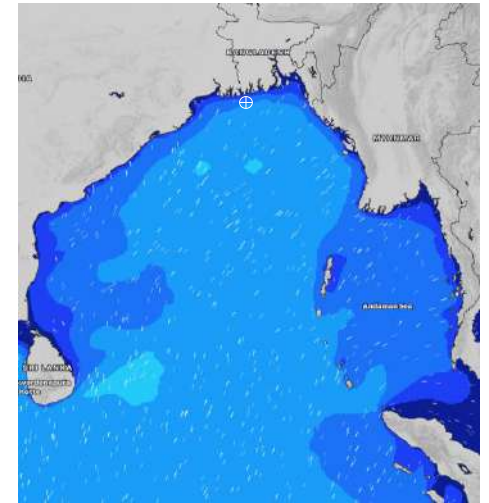
**10 July 24 Wed (Probability 95%)**



**11 July 24 Thu Probability 90%**



**12 July 24 Fri (Probability 80%)**



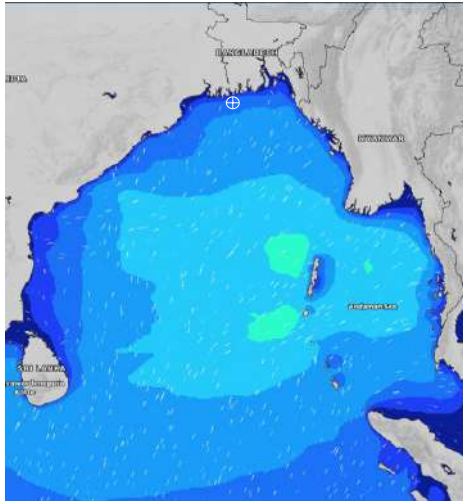
Significant wave height (m)

# MARINE WEATHER FORECAST- 10 NM SOUTH OF MONGLA FAIRWAY (Lat 21° 16' N, Long 089° 34' E)

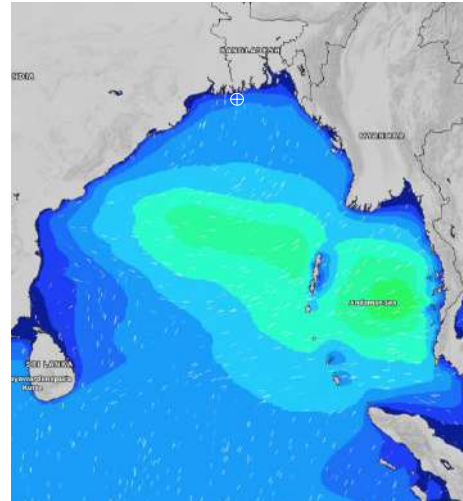
**DATE : 09 to 16 July 2024**

Date	Time	Max Wind Spd (kts)	Wind Direction	Wave Ht (m)	Sea State	Baro Pressure	Air Temp		Sea Surface Temp	Humidity (%)	Prob of Rain (%)	Sea State	Wave Ht (m)
							Max	Min					
13-07-24	0001	15	SSW	1.9	4	1000	31	27	28	94%	55% (0.7 mm)	0	0
	0600	12	SSW	1.8	4	999			29	94%	41% (0.4 mm)	1	0 - 0.1
	1200	11	SSW	1.8	4	999			29	81%	47% (0.5 mm)	2	0.1 - 0.5
	1800	13	SSW	1.7	4	997			29	84%	55% (0.6 mm)	3	0.5 - 1.25
14-07-24	0001	14	S	1.7	4	998	32	27	29	91%	54% (0.7 mm)	4	1.25 - 2.5
	0600	11	SSW	1.7	4	998			29	93%	40% (0.4 mm)	5	2.5 - 4.0
	1200	11	SSE	1.8	4	999			29	79%	59% (0.5 mm)	6	4.0 - 6.0
	1800	13	SSE	1.9	4	997			29	84%	61% (0.6 mm)	7	6.0 - 9.0
15-07-24	0001	13	SSE	1.9	4	999	32	28	29	90%	56% (0.7 mm)	8	9.0 - 14.0
	0600	14	ESE	1.8	4	999			29	91%	40% (0.4 mm)	9	Over 14.0
	1200	13	ESE	1.8	4	999			29	77%	63% (0.5 mm)		
	1800	14	SE	1.7	4	997			29	82%	60% (0.6 mm)		
16-07-24	0001	12	SSE	1.6	4	999	33	28	29	89%	45% (0.7 mm)		
	0600	10	ESE	1.6	4	999			29	91%	32% (0.4 mm)		
	1200	11	ESE	1.6	4	999			29	76%	24% (0.0 mm)		
	1800	15	SE	1.7	4	997			29	79%	24% (0.0 mm)		

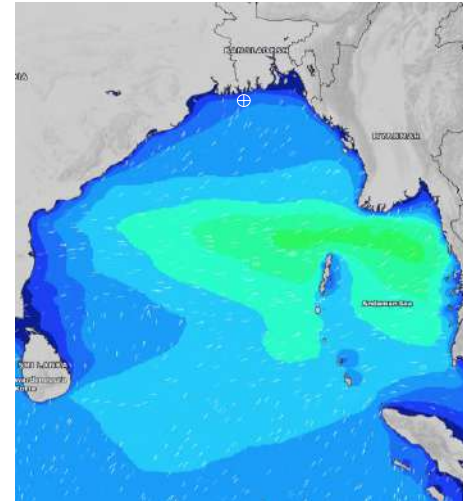
**13 July 24 Sat (Probability 70%)**



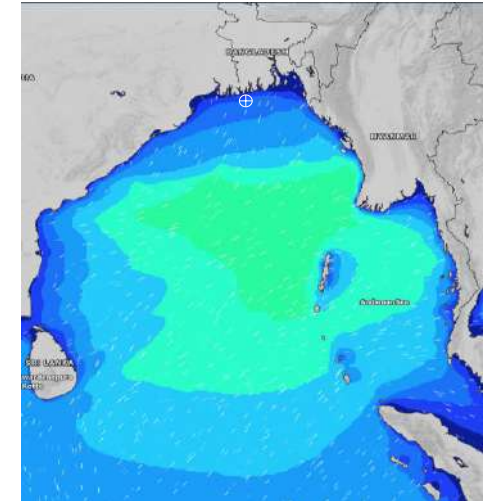
**14 July 24 Sun (Probability 60%)**



**15 July 24 Mon (Probability 50%)**



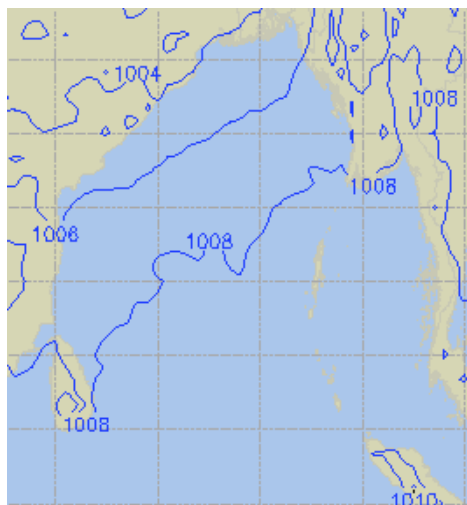
**16 July 24 Tue (Probability 50%)**



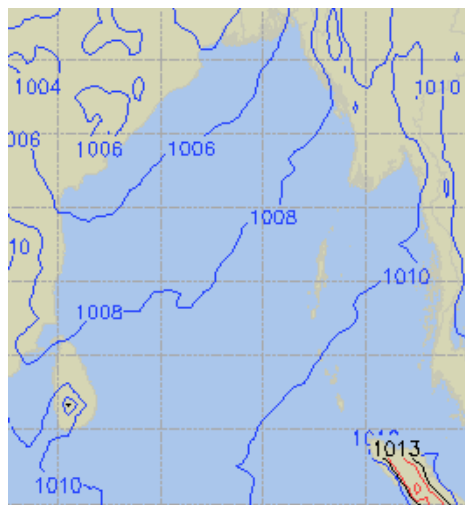
Significant wave height (m)

## PREDICTED SURFACE PRESSURE FORECAST (09 to 15 July 2024)

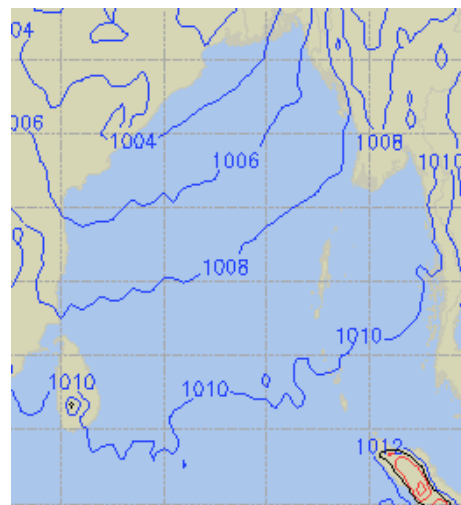
**09 July 24 Tue (Probability 98%)**



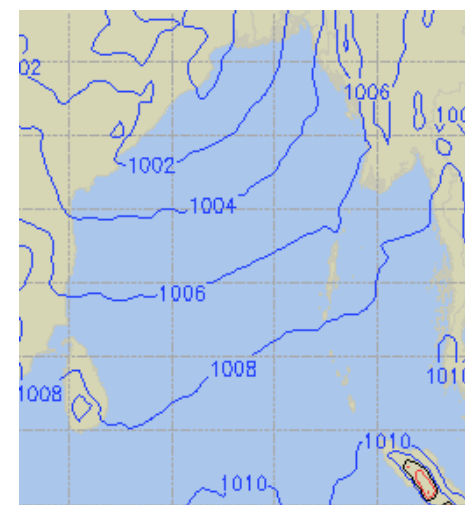
**10 July 24 Wed (Probability 95%)**



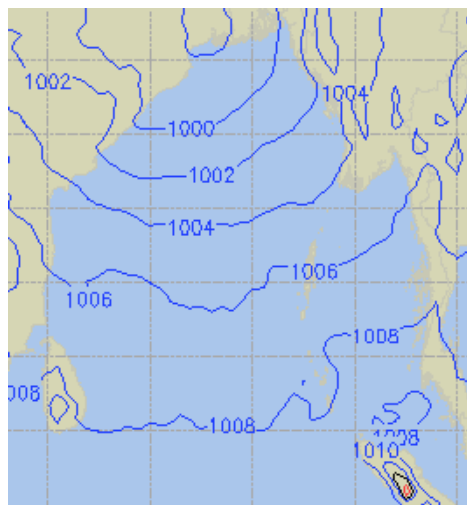
**11 July 24 Thu (Probability 90%)**



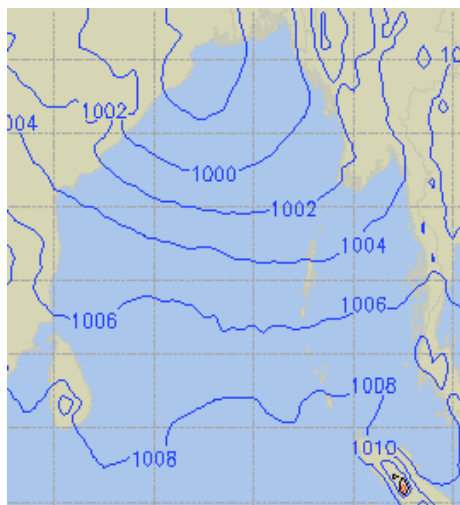
**12 July 24 Fri (Probability 80%)**



**13 July 24 Sat (Probability 70%)**



**14 July 24 Sun (Probability 60%)**



**15 July 24 Mon (Probability 50%)**

