



**SUMMARY OF MARINE WEATHER FORECAST**  
**COASTAL AREA OF BANGLADESH**  
**DATE: 09 to 16 May 2026**



Fleet Forecast	The trough of low persists from West Bengal to North Bay.
Wind Direction, Speed	South/South-westerly 08-12 kts, temporary gusting up to 22 kts.
Wave Height & Sea State	Ctg Outer Anchorage: 0.2 to 0.6 m (Sea state: 2 to 3 ) Abeam to Cox's Bazar: 0.6 to 1.7 m (Sea state: 3 to 4) St. Martin's Island: 0.6 to 1.6 m (Sea state 3 to 4) Payra Fairway Buoy: 0.6 to 1.9 m (Sea state: 3 to 4) Mongla Fairway Buoy: 0.7 to 2.1 m (Sea state: 3 to 4) Outer EEZ: 0.7 to 2.1 m (Sea state: 3 to 4)
Sea Surface Temperature	25° C - 30° C
Baro Pressure	1006-1011 mb
Rainfall	Partly Cloudy to cloudy sky with light rain/thunder showers with gusty wind is likely to occur over Bay of Bengal and adjoining area.
Fog & Visibility	Hazy condition over the Bay of Bengal & coastal area, Visibility 1.0 – 5.0 km

**Marine Weather Outlook (09 to 16 May 2026):**

- Partly Cloudy to cloudy sky with light rain/thunder showers with gusty wind is likely to occur over Bay of Bengal and adjoining area.
- Rainfall activity may decrease.
- Hazy condition over the Bay of Bengal & coastal area.



## MARINE WEATHER FORECAST (09 to 16 May 2026) PATENGA POINT (22° 12' N, 091° 38' E)



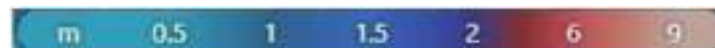
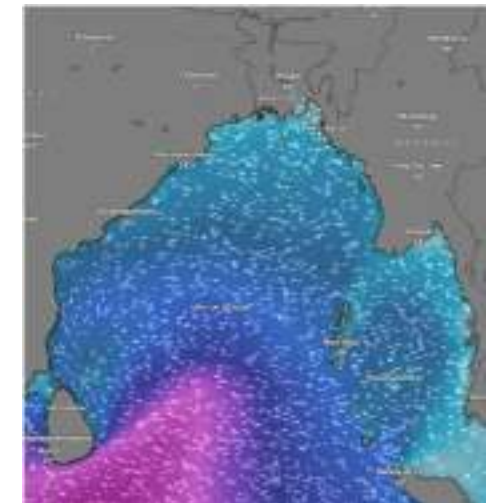
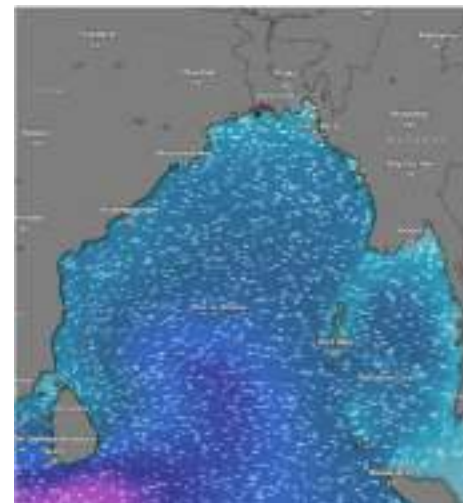
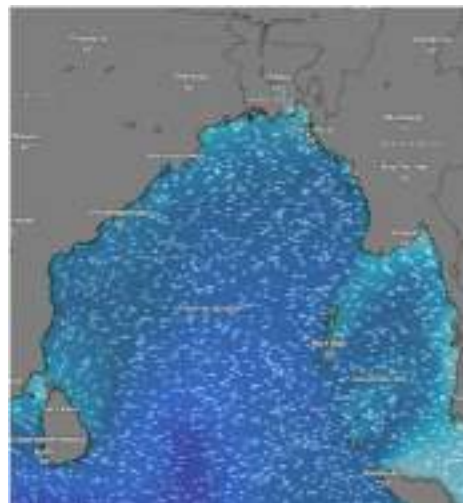
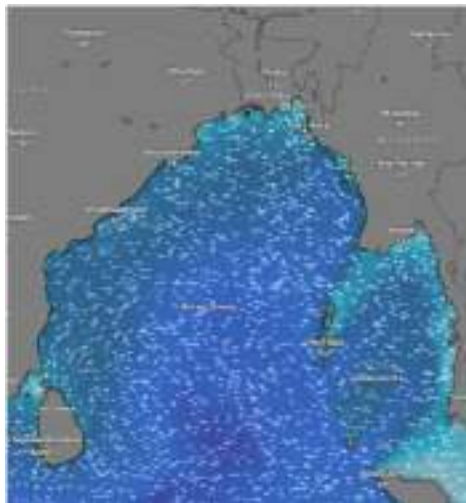
Date	Time	Air Temp (°C)		Sea Surface Temp (°C)	Baro Pressure (mbar)	Wind Direction	Wind Spd (kts)		Wave Ht (m)	Sea State	Humidity (%)	Prob of Rain (%)	Amount of Rain (mm)
		Max	Min				Gusting	Avg					
09-05-26 (Saturday)	0001	33	26	26	1009	NNE	10	05	0.2	2	89	15	0.0
	0600			25	1010	NNE	09	05	0.2	2	90	13	0.0
	1200			29	1008	W	11	07	0.2	2	72	10	0.0
	1800			27	1007	W	10	06	0.2	2	85	12	0.0
10-05-26 (Sunday)	0001	33	26	26	1010	SW	07	04	0.2	2	88	20	0.1
	0600			25	1011	SE	04	03	0.2	2	89	24	0.1
	1200			29	1009	SSW	11	07	0.2	2	76	10	0.0
	1800			27	1008	SSW	12	09	0.3	2	84	20	0.1
11-05-26 (Monday)	0001	33	26	26	1010	E	10	06	0.3	2	88	24	0.1
	0600			25	1011	NE	08	05	0.2	2	91	26	0.3
	1200			29	1009	SSW	07	04	0.2	2	82	17	0.0
	1800			27	1008	SSW	10	06	0.2	2	84	36	0.4
12-05-26 (Tuesday)	0001	33	26	26	1008	SE	07	04	0.2	2	89	41	0.4
	0600			25	1009	NE	05	03	0.2	2	90	40	0.4
	1200			29	1007	SW	10	06	0.2	2	77	32	0.3
	1800			27	1006	SSW	11	07	0.2	2	86	24	0.1

09 May 2026

10 May 2026

11 May 2026

12 May 2026



Significant wave height (m)

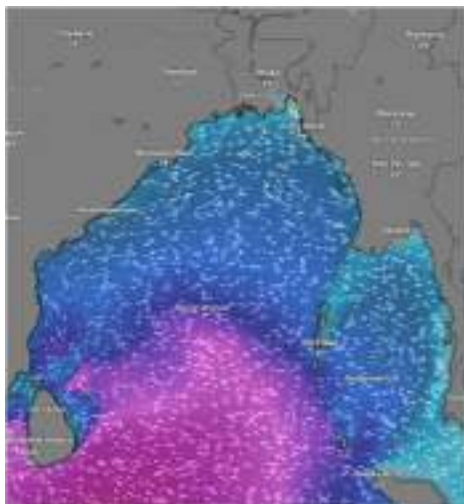


## MARINE WEATHER FORECAST (09 to 16 May 2026) PATENGA POINT (22° 12' N, 091° 38' E)

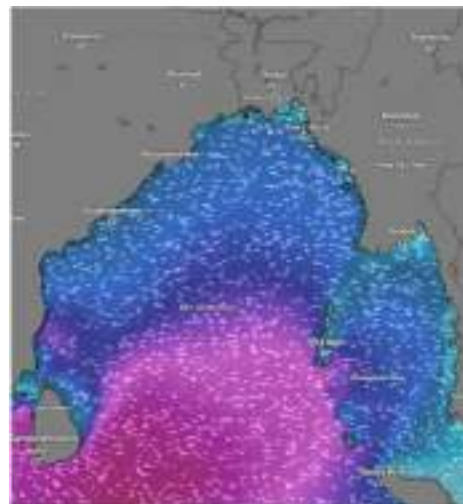


Date	Time	Air Temp (°C)		Sea Surface Temp (°C)	Baro Pressure (mbar)	Wind Direction	Wind Spd (kts)		Wave Ht (m)	Sea State	Humidity (%)	Prob of Rain (%)	Amount of Rain (mm)
		Max	Min				Gusting	Avg					
13-05-26 (Wednesday)	0001	33	26	26	1008	W	10	06	0.2	2	88	35	0.3
	0600			25	1009	N	10	05	0.2	2	91	31	0.2
	1200			29	1007	SSW	10	06	0.2	2	75	30	0.2
	1800			27	1006	S	13	06	0.2	2	85	32	0.3
14-05-26 (Thursday)	0001	33	26	26	1008	SSE	10	07	0.3	2	89	39	0.3
	0600			25	1009	SE	13	08	0.3	2	88	33	0.2
	1200			29	1007	SSW	13	08	0.3	2	79	21	0.1
	1800			27	1006	SSW	17	10	0.4	2	78	24	0.1
15-05-26 (Friday)	0001	32	25	26	1007	SSW	13	09	0.6	3	89	39	0.5
	0600			25	1008	SSE	12	08	0.6	3	88	33	0.4
	1200			29	1006	SSW	14	12	0.5	3	79	21	0.0
	1800			27	1005	SSW	15	11	0.6	3	78	24	0.1
16-05-26 (Saturday)	0001	32	25	26	1007	S	18	14	0.6	3	88	41	0.5
	0600			25	1008	SSE	16	12	0.5	3	89	35	0.4
	1200			29	1006	SSW	16	12	0.5	3	72	24	0.1
	1800			27	1005	SSW	14	10	0.5	3	78	26	0.1

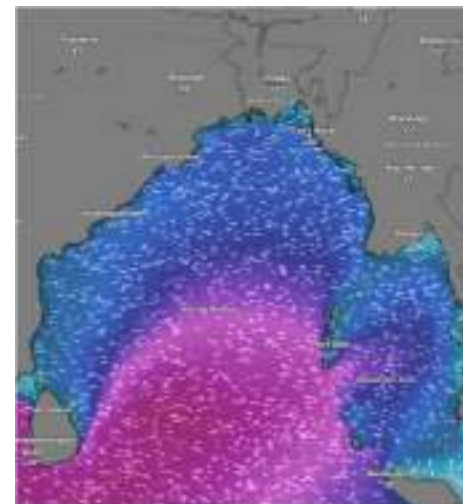
13 May 2026



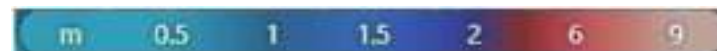
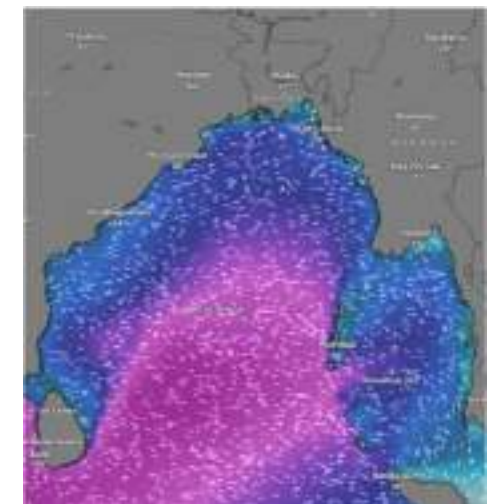
14 May 2026



15 May 2026



16 May 2026



Significant wave height (m)



## MARINE WEATHER FORECAST (09 to 16 May 2026) ABEAM TO KUTUBDIA (21° 51' N, 091° 40' E)



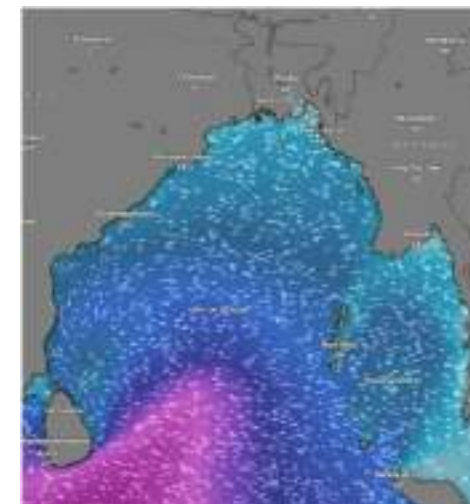
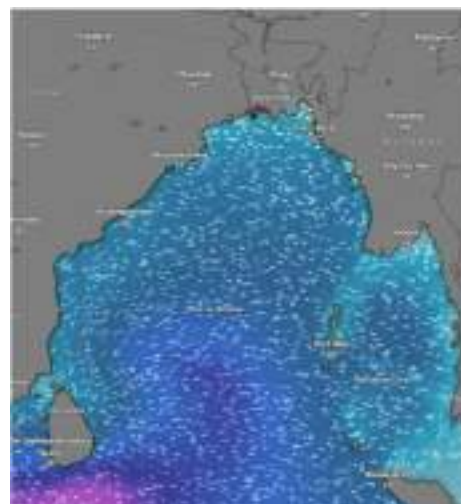
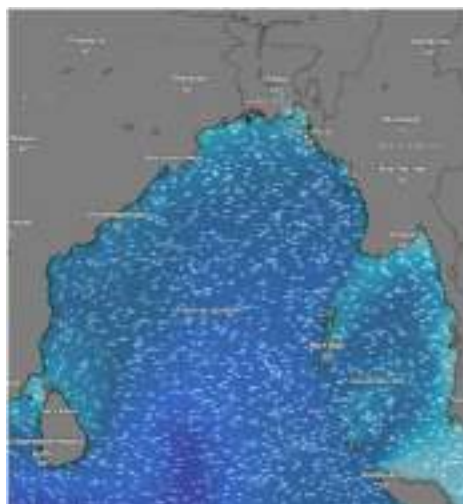
Date	Time	Air Temp (°C)		Sea Surface Temp (°C)	Baro Pressure (mbar)	Wind Direction	Wind Spd (kts)		Wave Ht (m)	Sea State	Humidity (%)	Prob of Rain (%)	Amount of Rain (mm)
		Max	Min				Gusting	Avg					
09-05-26 (Saturday)	0001	33	26	26	1009	NNW	12	08	0.4	2	89	15	0.0
	0600			25	1010	NNE	11	07	0.4	2	90	13	0.0
	1200			29	1008	NW	12	08	0.3	2	71	10	0.0
	1800			27	1007	W	11	07	0.3	2	82	12	0.0
10-05-26 (Sunday)	0001	33	26	26	1010	NW	11	07	0.3	2	88	20	0.1
	0600			25	1011	N	07	04	0.4	2	89	24	0.1
	1200			29	1009	NW	12	08	0.4	2	72	10	0.0
	1800			27	1008	NW	14	10	0.4	2	87	20	0.1
11-05-26 (Monday)	0001	33	26	26	1010	W	11	07	0.4	2	88	24	0.1
	0600			25	1011	SW	07	04	0.3	2	91	20	0.0
	1200			29	1009	SSW	10	06	0.3	2	82	45	0.5
	1800			27	1008	W	09	05	0.3	2	84	31	0.3
12-05-26 (Tuesday)	0001	33	26	26	1008	SW	11	07	0.3	2	89	41	0.4
	0600			25	1009	E	07	04	0.2	2	90	40	0.4
	1200			29	1007	SSW	05	03	0.2	2	77	32	0.3
	1800			27	1006	S	11	07	0.3	2	86	24	0.1

09 May 2026

10 May 2026

11 May 2026

12 May 2026



Significant wave height (m)



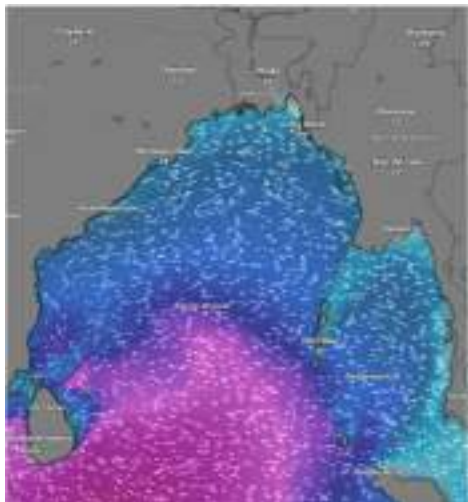
# MARINE WEATHER FORECAST (09 to 16 May 2026)

## ABEAM TO KUTUBDIA (21° 51' N, 091° 40' E)

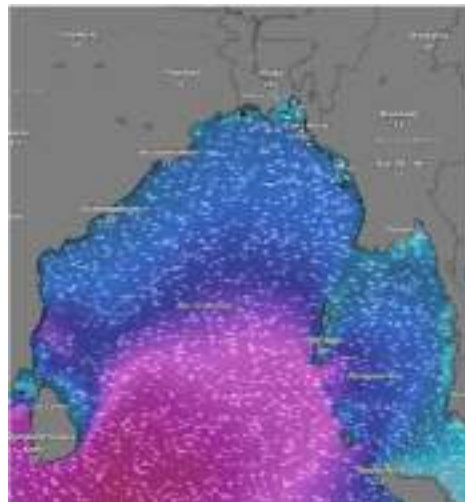


Date	Time	Air Temp (°C)		Sea Surface Temp (°C)	Baro Pressure (mbar)	Wind Direction	Wind Spd (kts)		Wave Ht (m)	Sea State	Humidity (%)	Prob of Rain (%)	Amount of Rain (mm)
		Max	Min				Gusting	Avg					
13-05-26 (Wednesday)	0001	33	26	26	1008	SW	10	07	0.2	2	87	21	0.1
	0600			25	1009	E	10	06	0.2	2	87	34	0.2
	1200			29	1007	SSW	11	06	0.2	2	78	30	0.2
	1800			27	1006	S	12	07	0.3	2	89	22	0.1
14-05-26 (Thursday)	0001	33	26	26	1008	SSE	12	09	0.5	3	86	34	0.2
	0600			25	1009	SE	14	09	0.5	3	87	24	0.0
	1200			29	1007	SSW	13	08	0.6	3	87	22	0.1
	1800			27	1006	SSW	16	12	0.5	3	79	31	0.2
15-05-26 (Friday)	0001	32	25	26	1007	SW	17	13	0.8	3	86	34	0.3
	0600			25	1008	SW	22	16	0.7	3	87	24	0.1
	1200			29	1006	SSW	18	14	0.7	3	87	22	0.0
	1800			27	1005	SSW	18	14	0.9	3	79	31	0.3
16-05-26 (Saturday)	0001	32	25	26	1007	SSW	19	14	0.8	3	88	34	0.3
	0600			25	1008	S	20	15	0.8	3	89	24	0.1
	1200			29	1006	SSW	17	13	0.7	3	75	24	0.1
	1800			27	1005	SSW	17	13	0.8	3	84	42	0.4

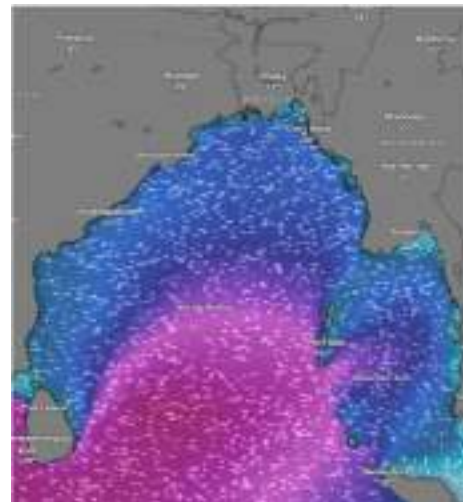
13 May 2026



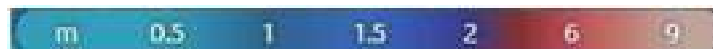
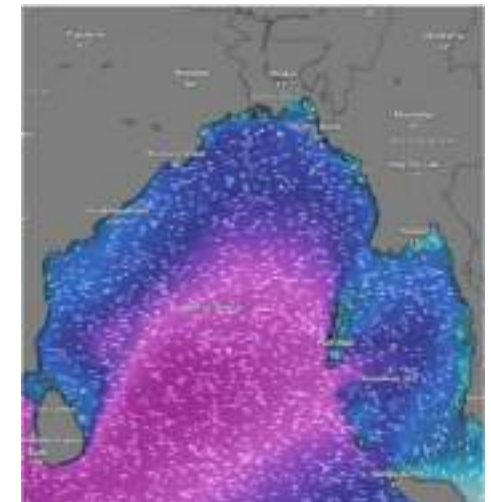
14 May 2026



15 May 2026



16 May 2026



Significant wave height (m)

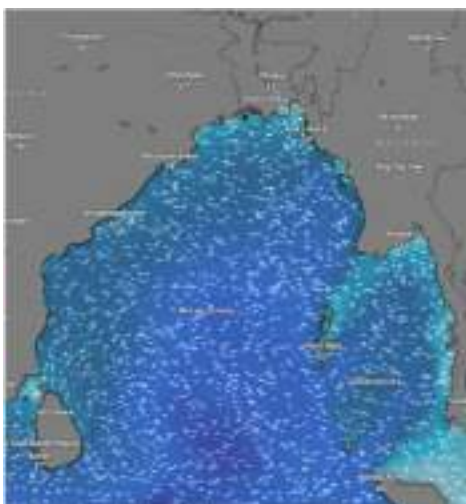


## MARINE WEATHER FORECAST (09 to 16 May 2026) ABEAM TO ELEPHANT POINT (21° 11' N, 091° 52' E)

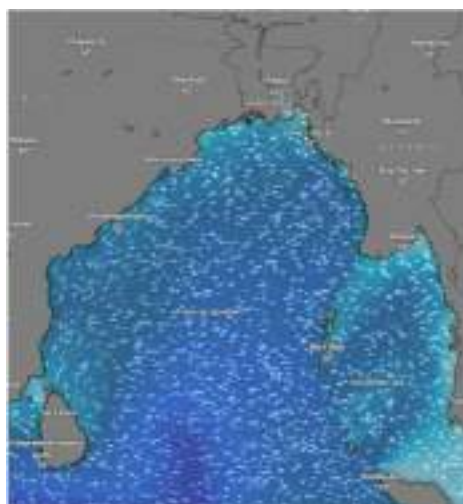


Date	Time	Air Temp (°C)		Sea Surface Temp (°C)	Baro Pressure (mbar)	Wind Direction	Wind Spd (kts)		Wave Ht (m)	Sea State	Humidity (%)	Prob of Rain (%)	Amount of Rain (mm)
		Max	Min				Gusting	Avg					
09-05-26 (Saturday)	0001	33	26	26	1009	NW	13	09	0.9	3	89	15	0.0
	0600			25	1010	N	15	11	0.9	3	90	13	0.0
	1200			29	1008	NW	10	06	0.9	3	72	10	0.0
	1800			27	1007	NW	11	07	0.8	3	86	12	0.0
10-05-26 (Sunday)	0001	33	26	26	1010	NNW	09	05	0.9	3	86	20	0.1
	0600			25	1011	NE	09	05	0.8	3	89	24	0.1
	1200			29	1009	NNW	10	06	0.8	3	77	10	0.0
	1800			27	1008	NW	11	07	0.8	3	87	20	0.1
11-05-26 (Monday)	0001	33	26	26	1010	SW	09	05	0.7	3	88	26	0.1
	0600			25	1011	SSE	07	04	0.7	3	91	22	0.0
	1200			29	1009	SSE	05	03	0.6	3	82	38	0.4
	1800			27	1008	S	09	05	0.6	3	84	45	0.5
12-05-26 (Tuesday)	0001	33	26	26	1008	SSW	10	06	0.6	3	89	41	0.4
	0600			25	1009	SE	11	07	0.5	3	90	40	0.4
	1200			29	1007	SSE	07	04	0.5	3	77	32	0.3
	1800			27	1006	SSE	10	06	0.6	3	86	24	0.1

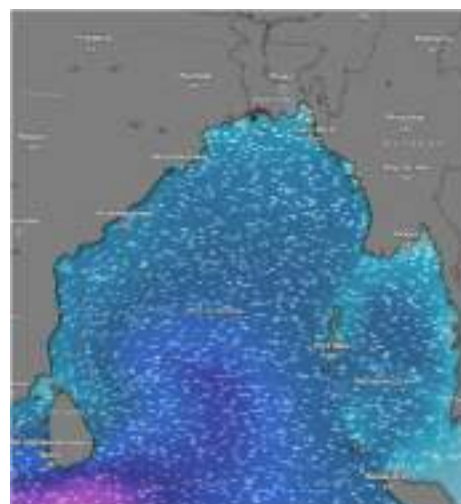
09 May 2026



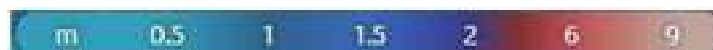
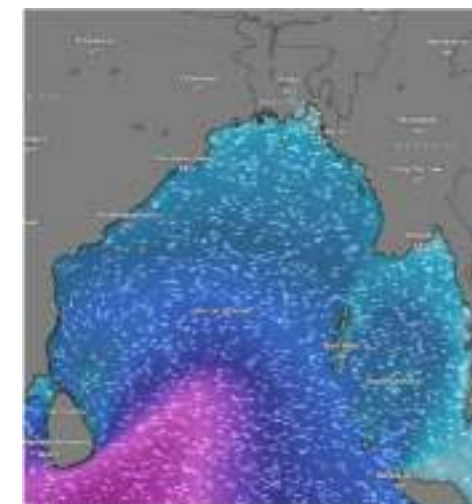
10 May 2026



11 May 2026



12 May 2026



Significant wave height (m)



# MARINE WEATHER FORECAST (09 to 16 May 2026) ABEAM TO ELEPHANT POINT (21° 11' N, 091° 52' E)



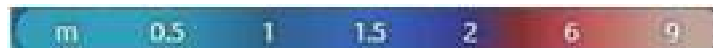
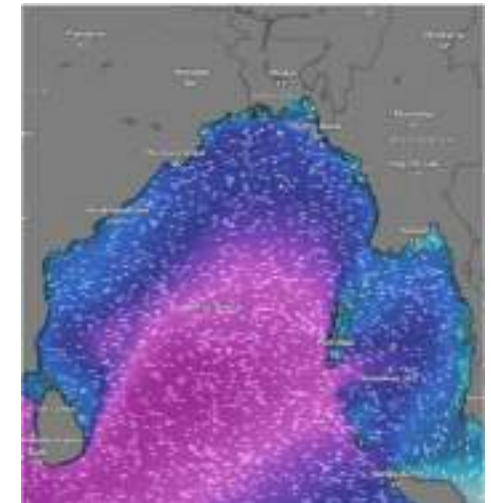
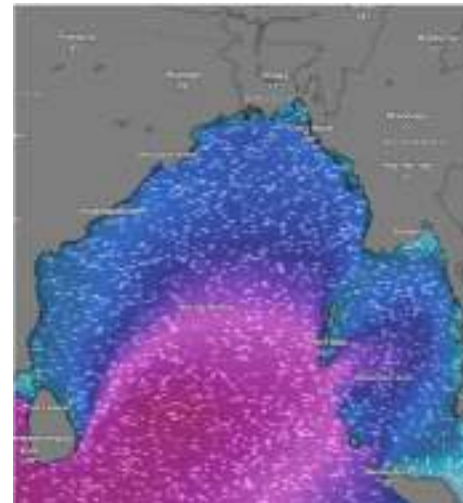
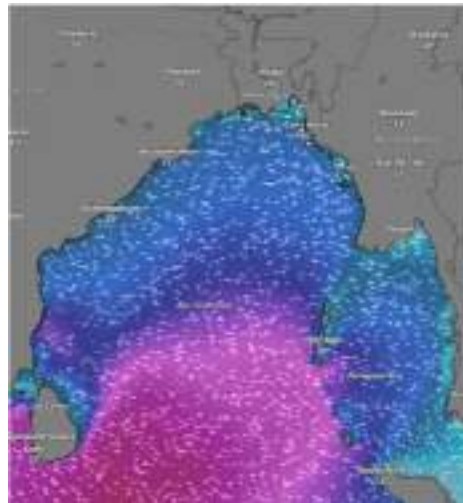
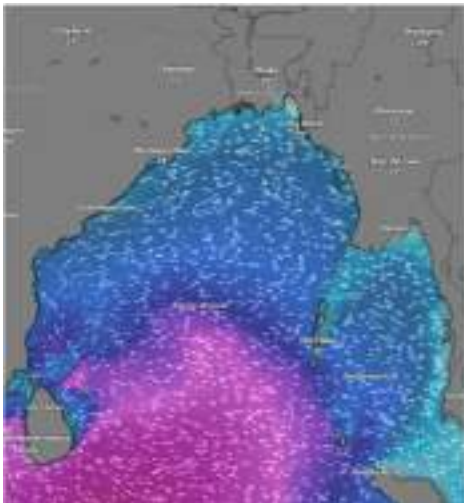
Date	Time	Air Temp (°C)		Sea Surface Temp (°C)	Baro Pressure (mbar)	Win Direction	Wind Spd (kts)		Wave Ht (m)	Sea State	Humidity (%)	Prob of Rain (%)	Amount of Rain (mm)
		Max	Min				Gusting	Avg					
13-05-26 (Wednesday)	0001	33	26	26	1008	SSW	09	04	0.7	3	88	38	0.3
	0600			25	1009	SE	12	09	0.8	3	87	35	0.3
	1200			29	1007	SSE	12	09	1.0	3	75	30	0.2
	1800			27	1006	SSE	11	08	1.1	3	87	23	0.1
14-05-26 (Thursday)	0001	33	26	26	1008	S	09	05	1.0	3	85	32	0.3
	0600			25	1009	SSW	07	04	1.1	3	87	30	0.2
	1200			29	1007	SSE	11	07	1.1	3	77	25	0.1
	1800			27	1006	SW	14	10	1.2	3	86	21	0.1
15-05-26 (Friday)	0001	32	25	26	1007	SSW	14	10	1.2	3	85	32	0.3
	0600			25	1008	SSW	15	10	1.3	4	87	30	0.2
	1200			29	1006	S	13	09	1.3	4	77	25	0.1
	1800			27	1005	SSW	14	10	1.4	4	86	21	0.0
16-05-26 (Saturday)	0001	32	25	26	1007	SSW	20	15	1.6	4	87	32	0.3
	0600			25	1008	S	15	11	1.6	4	89	30	0.2
	1200			29	1006	SSW	13	09	1.6	4	74	25	0.1
	1800			27	1005	SSW	15	11	1.7	4	87	43	0.4

13 May 2026

14 May 2026

15 May 2026

16 May 2026



Significant wave height (m)



## MARINE WEATHER FORECAST (09 to 16 May 2026) ABEAM TO ST. MARTIN'S LIGHT HOUSE (20° 37' N, 092° 08' E)



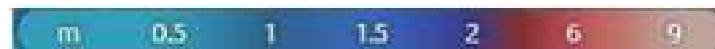
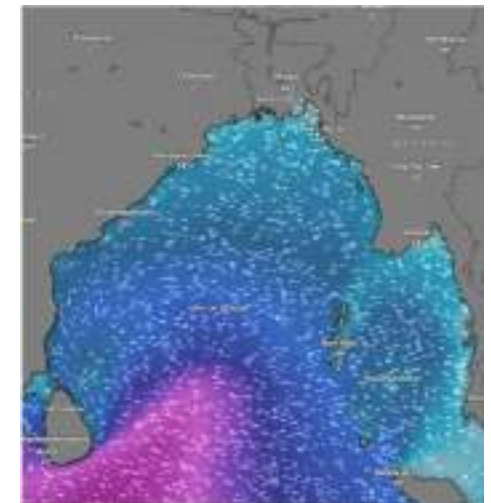
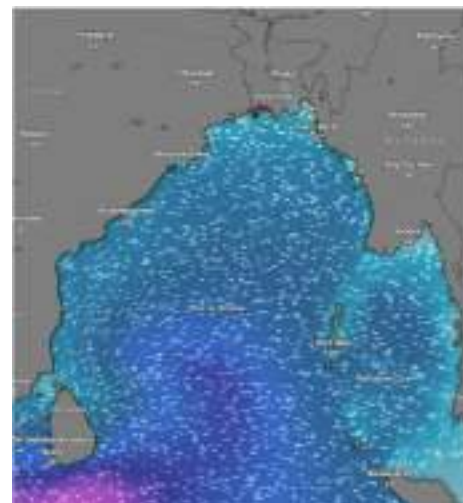
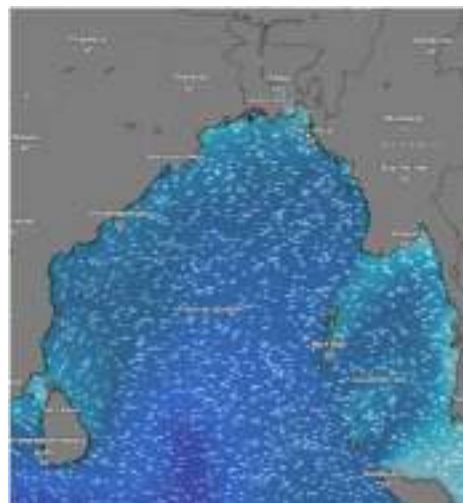
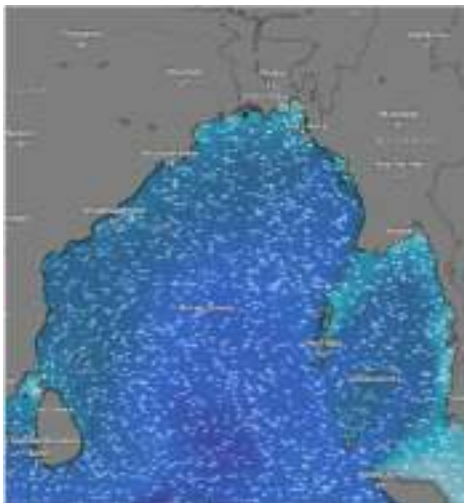
Date	Time	AirTemp (°C)		Sea Surface Temp (°C)	Baro Pressure (mbar)	Wind Direction	Wind Spd (kts)		Wave Ht (m)	Sea State	Humidity (%)	Prob of Rain (%)	Amount of Rain (mm)
		Max	Min				Gusting	Avg					
09-05-26 (Saturday)	0001	33	26	26	1009	NNW	14	10	1.0	3	89	20	0.0
	0600			25	1010	NNW	13	09	1.0	3	90	15	0.0
	1200			29	1008	NW	10	06	0.9	3	70	10	0.0
	1800			27	1007	NNW	12	08	0.9	3	79	12	0.0
10-05-26 (Sunday)	0001	33	26	26	1010	NW	13	09	0.9	3	86	20	0.1
	0600			25	1011	N	10	06	0.8	3	89	24	0.1
	1200			29	1009	W	07	04	0.8	3	77	10	0.0
	1800			27	1008	W	13	09	0.8	3	87	20	0.1
11-05-26 (Monday)	0001	33	26	26	1010	W	07	04	0.8	3	88	22	0.0
	0600			25	1011	NE	09	05	0.7	3	91	23	0.0
	1200			29	1009	SE	10	06	0.7	3	82	36	0.3
	1800			27	1008	SSE	07	04	0.6	3	84	48	0.5
12-05-26 (Tuesday)	0001	33	26	26	1008	SSE	09	05	0.8	3	89	41	0.4
	0600			25	1009	SE	13	09	0.7	3	90	40	0.4
	1200			29	1007	SSE	12	08	0.8	3	77	32	0.3
	1800			27	1006	SSE	11	07	0.8	3	86	24	0.1

09 May 2026

10 May 2026

11 May 2026

12 May 2026



Significant wave height (m)

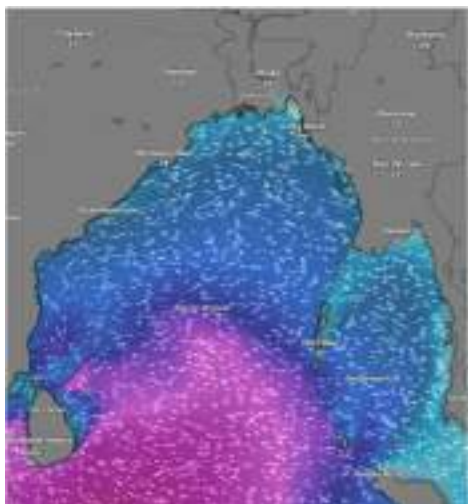


## MARINE WEATHER FORECAST (09 to 16 May 2026) ABEAM TO ST. MARTIN'S LIGHT HOUSE (20° 37' N, 092° 08' E)

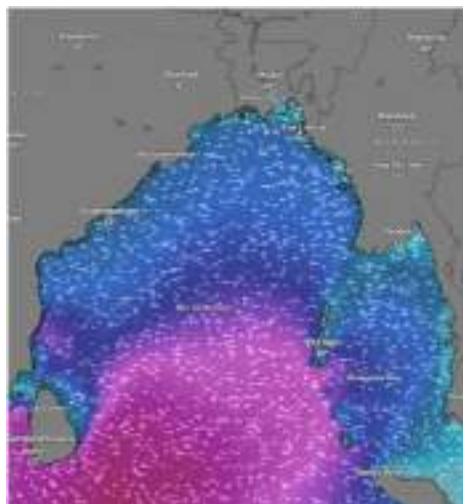


Date	Time	Air Temp (°C)		Sea Surface Temp (°C)	Baro Pressure (mbar)	Wind Direction	Wind Spd (kts)		Wave Ht (m)	Sea State	Humidity (%)	Prob of Rain (%)	Amount of Rain (mm)
		Max	Min				Gusting	Avg					
13-05-26 (Wednesday)	0001	33	26	26	1008	SSE	09	04	0.6	3	85	35	0.4
	0600			25	1009	SE	10	07	0.7	3	88	30	0.3
	1200			29	1007	SSE	12	08	0.8	3	79	30	0.2
	1800			27	1006	SSE	13	08	0.9	3	87	22	0.1
14-05-26 (Thursday)	0001	33	26	26	1008	SSE	08	04	1.1	3	88	31	0.3
	0600			25	1009	SE	05	03	1.2	3	87	29	0.2
	1200			29	1007	SE	08	05	1.2	3	76	25	0.1
	1800			27	1006	SSW	15	11	1.1	3	88	16	0.0
15-05-26 (Friday)	0001	32	25	26	1007	SSW	11	07	1.3	4	88	31	0.4
	0600			25	1008	SSW	09	05	1.4	4	90	29	0.2
	1200			29	1006	S	11	07	1.4	4	74	25	0.0
	1800			27	1005	SSW	14	10	1.5	4	87	16	0.0
16-05-26 (Saturday)	0001	32	25	26	1007	SSW	14	10	1.5	4	89	31	0.4
	0600			25	1008	S	12	08	1.6	4	90	29	0.2
	1200			29	1006	SSW	09	05	1.6	4	75	25	0.0
	1800			27	1005	SSW	14	10	1.6	4	89	38	0.4

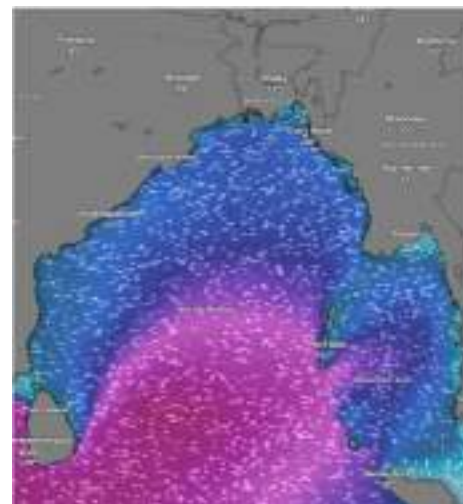
13 May 2026



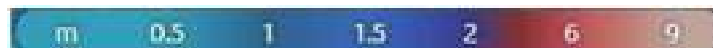
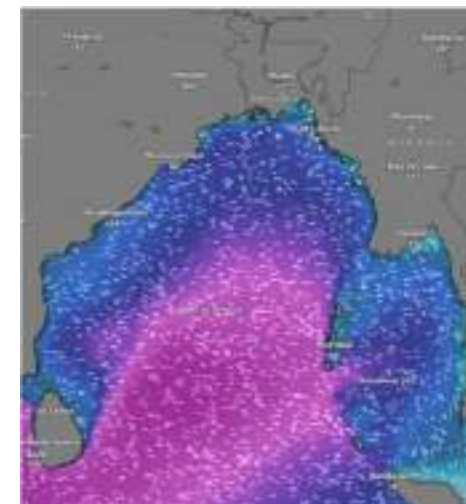
14 May 2026



15 May 2026



16 May 2026



Significant wave height (m)



# MARINE WEATHER FORECAST (09 to 16 May 2026)



## PAYRA FAIRWAY (21° 22' N, 090° 6' E)

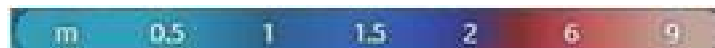
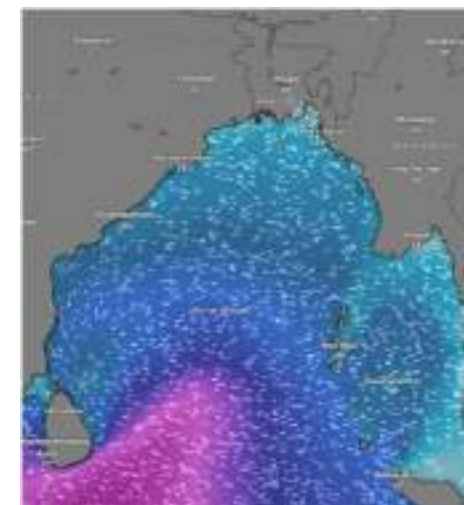
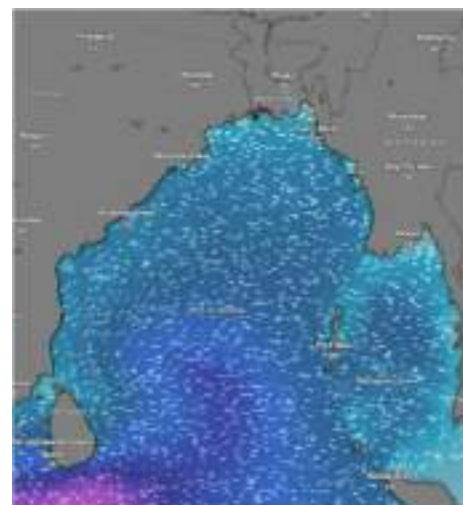
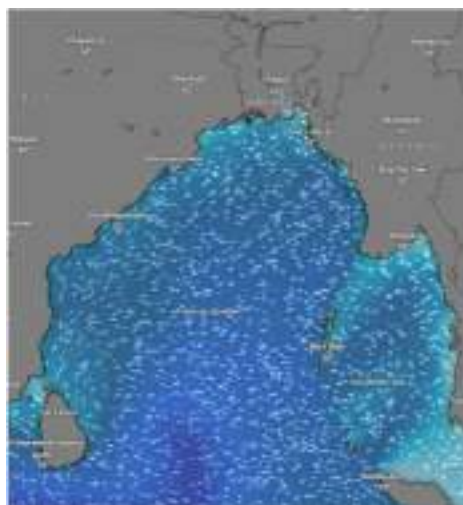
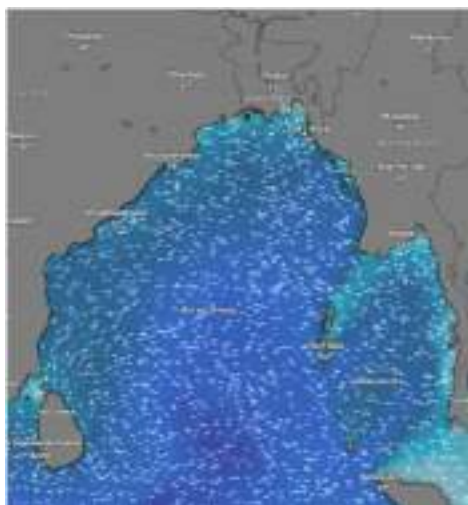
Date	Time	Air Temp (°C)		Sea Surface Temp (°C)	Baro Pressure (mbar)	Wind Direction	Wind Spd (kts)		Wave Ht (m)	Sea State	Humidity (%)	Prob of Rain (%)	Amount of Rain (mm)
		Max	Min				Gusting	Avg					
09-05-26 (Saturday)	0001	33	26	26	1009	NW	11	07	1.0	3	89	20	0.0
	0600			25	1010	NW	10	06	1.0	3	90	13	0.0
	1200			29	1008	N	09	05	0.8	3	71	10	0.0
	1800			27	1007	SSW	07	04	0.8	3	82	12	0.0
10-05-26 (Sunday)	0001	33	26	26	1010	SW	10	06	0.9	3	86	20	0.1
	0600			25	1011	NE	07	04	0.8	3	89	24	0.1
	1200			29	1009	SSE	11	07	0.8	3	77	10	0.0
	1800			27	1008	S	12	08	0.8	3	87	20	0.1
11-05-26 (Monday)	0001	33	26	26	1010	SSE	07	04	0.8	3	88	20	0.0
	0600			25	1011	NE	09	05	0.7	3	91	15	0.0
	1200			29	1009	SE	11	07	0.7	3	82	37	0.4
	1800			27	1008	SSE	10	06	0.6	3	84	51	0.5
12-05-26 (Tuesday)	0001	33	26	26	1008	SSW	07	04	0.6	3	89	41	0.4
	0600			25	1009	SE	09	05	0.7	3	90	40	0.4
	1200			29	1007	SSW	14	10	0.8	3	77	32	0.3
	1800			27	1006	S	12	08	0.9	3	86	24	0.1

09 May 2026

10 May 2026

11 May 2026

12 May 2026



Significant wave height (m)



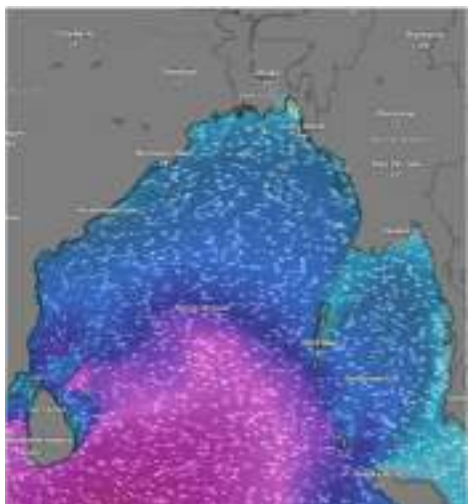
# MARINE WEATHER FORECAST (09 to 16 May 2026)



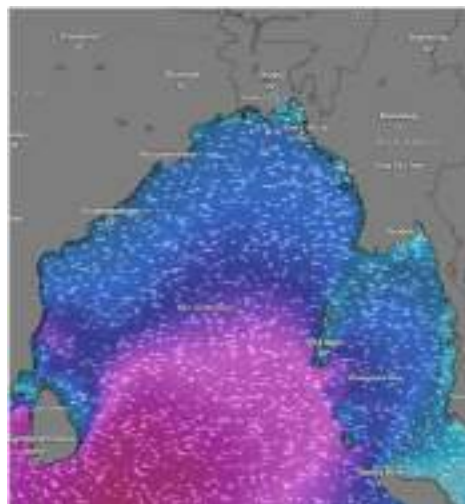
## PAYRA FAIRWAY (21° 22' N, 090° 6' E)

Date	Time	Air Temp (°C)		Sea Surface Temp (°C)	Baro Pressure (mbar)	Wind Direction	Wind Spd (kts)		Wae Ht (m)	Sea State	Humidity (%)	Prob of Rain (%)	Amount of Rain (mm)
		Max	Min				Gusting	Avg					
13-05-26 (Wednesday)	0001	33	26	26	1008	SSW	12	09	0.7	3	90	40	0.3
	0600			25	1009	SE	12	05	0.8	3	91	36	0.3
	1200			29	1007	S	10	06	0.9	3	79	30	0.2
	1800			27	1006	SE	11	08	1.0	3	87	30	0.2
14-05-26 (Thursday)	0001	33	26	26	1008	SSW	13	09	1.1	3	87	24	0.1
	0600			25	1009	SSW	15	11	1.2	3	87	16	0.0
	1200			29	1007	SSW	12	08	1.2	3	78	23	0.1
	1800			27	1006	SSW	16	12	1.3	4	77	21	0.1
15-05-26 (Friday)	0001	32	25	26	1007	SSW	18	14	1.6	4	87	24	0.1
	0600			25	1008	SW	24	17	1.7	4	87	16	0.0
	1200			29	1006	SSW	17	13	1.7	4	78	23	0.0
	1800			27	1005	SSW	18	14	1.9	4	77	21	0.0
16-05-26 (Saturday)	0001	32	25	26	1007	SSW	26	19	1.9	4	89	32	0.3
	0600			25	1008	SSW	22	16	1.9	4	90	22	0.1
	1200			29	1006	SSW	14	10	1.8	4	76	27	0.2
	1800			27	1005	SSW	18	14	1.9	4	87	46	0.5

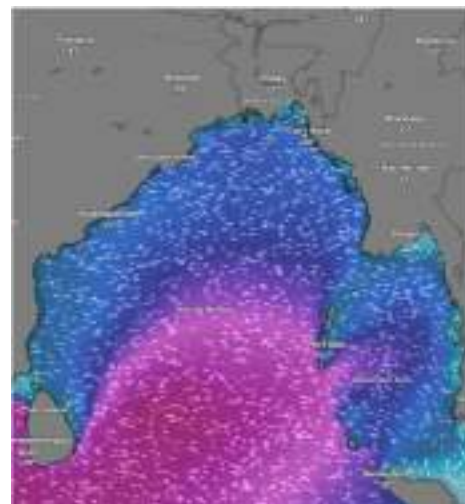
13 May 2026



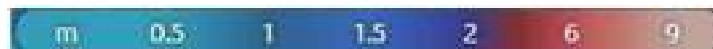
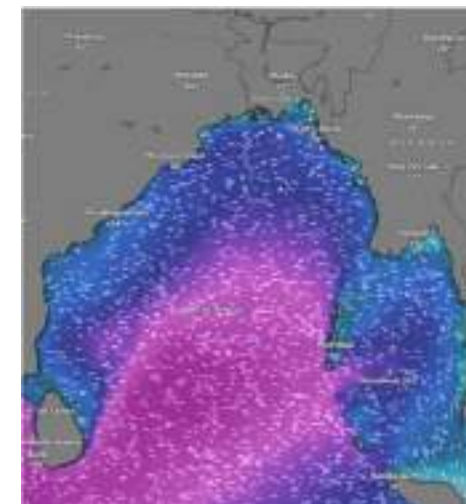
14 May 2026



15 May 2026



16 May 2026



Significant wave height (m)



# MARINE WEATHER FORECAST (09 to 16 May 2026)

## MONGLA FAIRWAY (21° 26' N, 089° 34' E)



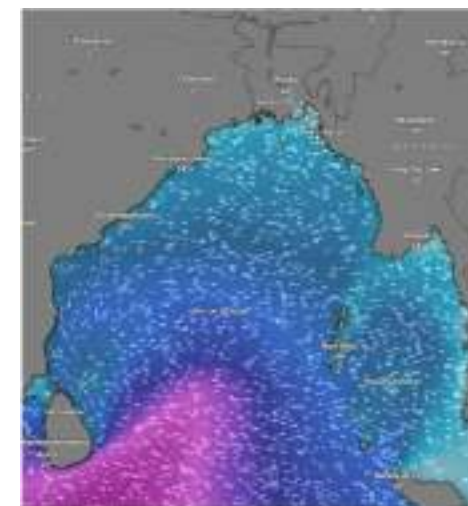
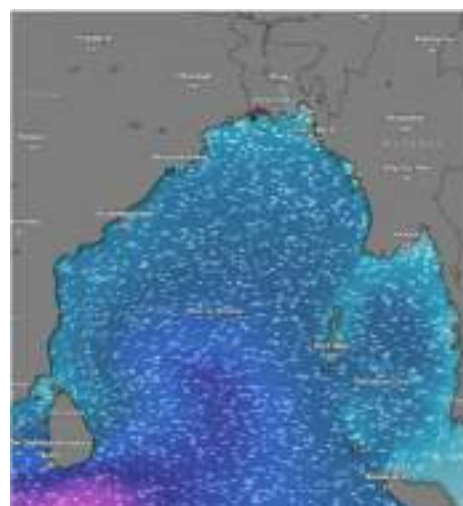
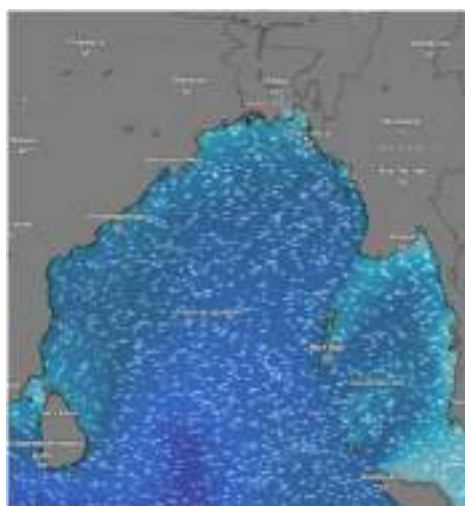
Date	Time	Air Temp (°C)		Sea Surface Temp (°C)	Baro Pressure (mbar)	Wind Direction	Wind Spd (kts)		Wave Ht (m)	Sea State	Humidity (%)	Prob of Rain (%)	Amount of Rain (mm)
		Max	Min				Gusting	Avg					
09-05-26 (Saturday)	0001	33	26	26	1009	NW	07	04	1.0	3	88	20	0.0
	0600			25	1010	NW	09	05	1.0	3	90	15	0.0
	1200			29	1008	NNW	05	03	0.9	3	72	10	0.0
	1800			27	1007	SSW	07	04	0.9	3	88	18	0.0
10-05-26 (Sunday)	0001	33	26	26	1010	SW	10	06	0.9	3	86	53	0.5
	0600			25	1011	NNW	07	04	0.9	3	90	45	0.5
	1200			29	1009	SSE	10	06	0.8	3	84	21	0.1
	1800			27	1008	S	11	07	0.8	3	87	34	0.3
11-05-26 (Monday)	0001	33	26	26	1010	SSW	10	06	0.8	3	86	30	0.5
	0600			25	1011	SW	09	05	0.7	3	90	24	0.5
	1200			29	1009	SSE	13	09	0.7	3	84	46	0.5
	1800			27	1008	SE	13	09	0.7	3	87	52	0.6
12-05-26 (Tuesday)	0001	33	26	26	1008	S	10	06	0.7	3	86	53	0.5
	0600			25	1009	SSE	11	07	0.8	3	90	45	0.5
	1200			29	1007	SSE	18	14	0.9	3	84	21	0.1
	1800			27	1006	S	14	10	0.9	3	87	34	0.3

09 May 2026

10 May 2026

11 May 2026

12 May 2026



Significant wave height (m)



# MARINE WEATHER FORECAST (09 to 16 May 2026)

## MONGLA FAIRWAY (21° 26' N, 089° 34' E)



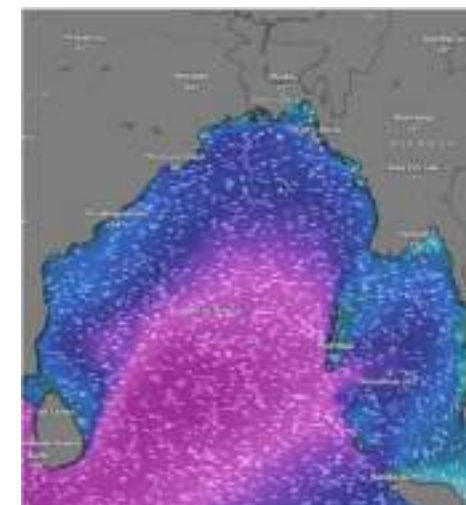
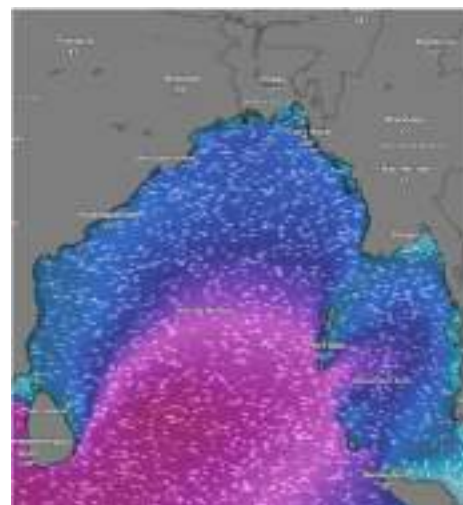
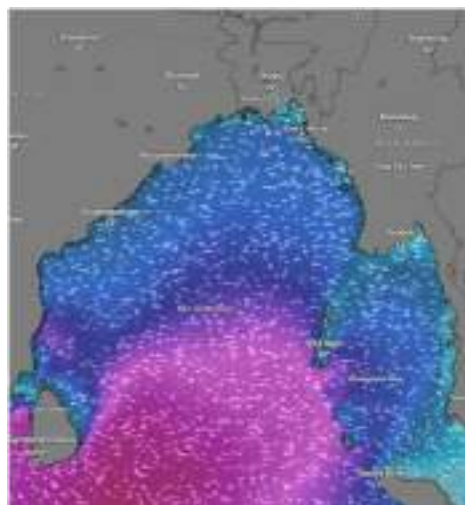
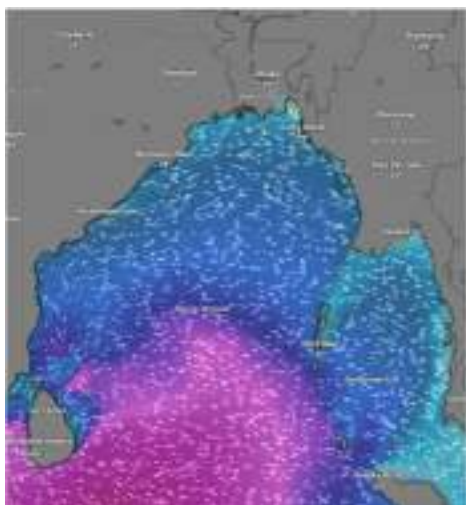
Date	Time	Air Temp (°C)		Sea Surface Temp (°C)	Baro Pressure (mbar)	Wind Direction	Wind Spd (kts)		Wave Ht (m)	Sea State	Humidity (%)	Prob of Rain (%)	Amount of Rain (mm)
		Max	Min				Gusting	Avg					
13-05-26 (Wednesday)	0001	33	26	26	1008	S	13	10	0.8	3	87	51	0.4
	0600			25	1009	SSE	10	06	0.9	3	89	41	0.4
	1200			29	1007	SSE	11	07	1.0	3	86	22	0.1
	1800			27	1006	SE	12	10	1.1	3	88	32	0.2
14-05-26 (Thursday)	0001	33	26	26	1008	SSW	14	10	1.2	3	88	18	0.1
	0600			25	1009	SSW	17	13	1.3	4	87	33	0.2
	1200			29	1007	SSE	13	09	1.3	4	76	52	0.4
	1800			27	1006	SSW	17	13	1.4	4	71	39	0.3
15-05-26 (Friday)	0001	32	25	26	1007	SSW	25	17	1.8	4	88	15	0.1
	0600			25	1008	SSW	26	18	1.8	4	90	33	0.2
	1200			29	1006	SSW	17	13	1.7	4	75	52	0.4
	1800			27	1005	SSW	22	16	2.0	4	86	39	0.3
16-05-26 (Saturday)	0001	32	25	26	1007	SSW	27	19	2.1	4	89	42	0.4
	0600			25	1008	SSW	26	18	2.0	4	90	56	0.6
	1200			29	1006	SW	15	11	1.9	4	74	24	0.1
	1800			27	1005	SSW	22	16	1.8	4	87	47	0.5

13 May 2026

14 May 2026

15 May 2026

16 May 2026



Significant wave height (m)



# MARINE WEATHER FORECAST (09 to 16 May 2026)

## OUTER EEZ (18° 48' N, 090° 30' E)



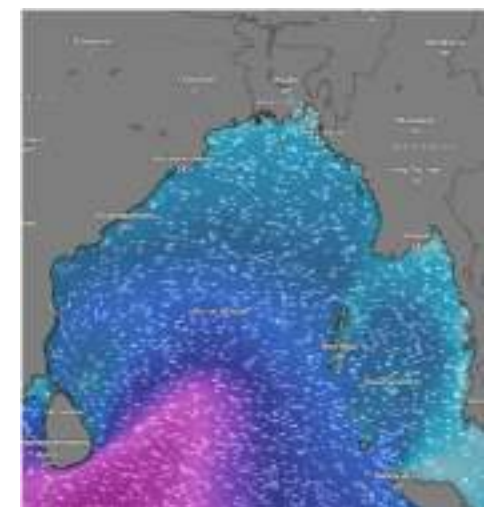
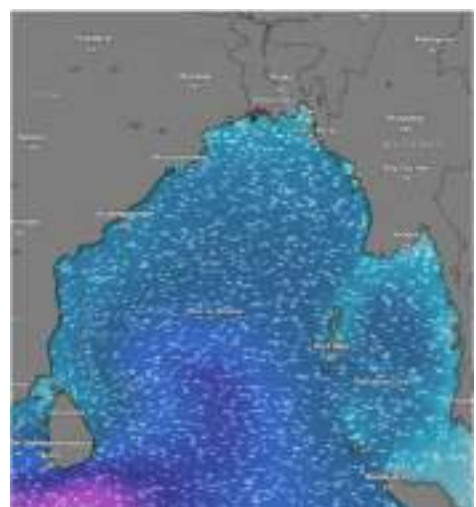
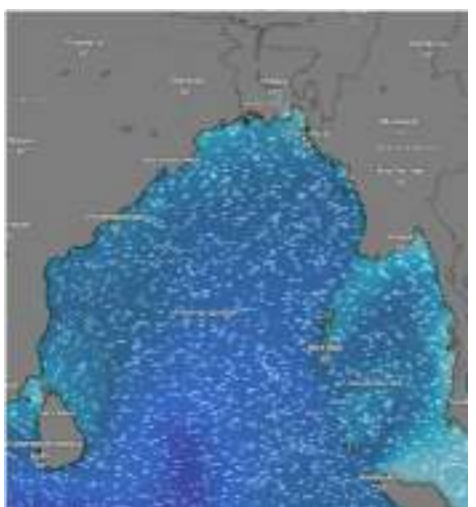
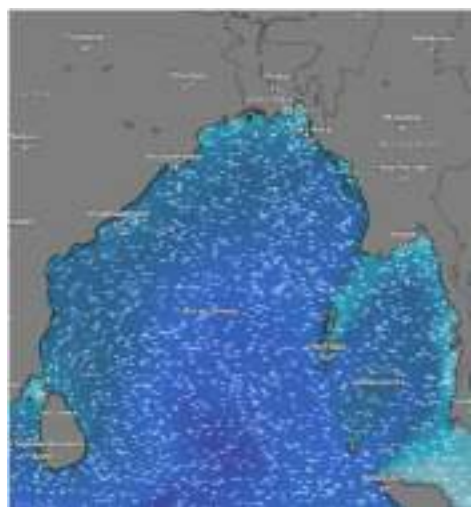
Date	Time	Air Temp (°C)		Sea Surface Temp (°C)	Baro Pressure (mbar)	Wind Direction	Wind Spd (kts)		Wave Ht (m)	Sea State	Humidity (%)	Prob of Rain (%)	Amount of Rain (mm)
		Max	Min				Gusting	Avg					
09-05-26 (Saturday)	0001	33	27	26	1010	NNW	13	09	1.1	3	90	36	0.4
	0600			25	1011	N	09	05	1.0	3	92	41	0.4
	1200			29	1009	NNE	12	08	1.1	3	85	22	0.0
	1800			27	1008	E	05	03	1.1	3	89	24	0.1
10-05-26 (Sunday)	0001	32	27	26	1010	NNW	07	04	1.0	3	90	50	0.5
	0600			25	1011	NNE	10	06	1.0	3	92	42	0.4
	1200			29	1009	E	12	08	1.0	3	85	26	0.1
	1800			27	1008	SE	14	10	1.0	3	89	45	0.5
11-05-26 (Monday)	0001	32	26	26	1010	SSE	20	15	1.0	3	90	18	0.0
	0600			25	1011	SSE	12	08	0.9	3	92	24	0.1
	1200			29	1009	SSE	10	06	0.8	3	85	45	0.5
	1800			27	1008	S	09	05	0.8	3	89	53	0.5
12-05-26 (Tuesday)	0001	32	26	26	1008	SSW	11	07	0.8	3	90	36	0.4
	0600			25	1009	SSW	09	05	0.7	3	92	41	0.4
	1200			29	1007	W	07	04	0.7	3	85	22	0.0
	1800			27	1006	SSE	11	07	0.8	3	89	24	0.1

09 May 2026

10 May 2026

11 May 2026

12 May 2026



Significant wave height (m)



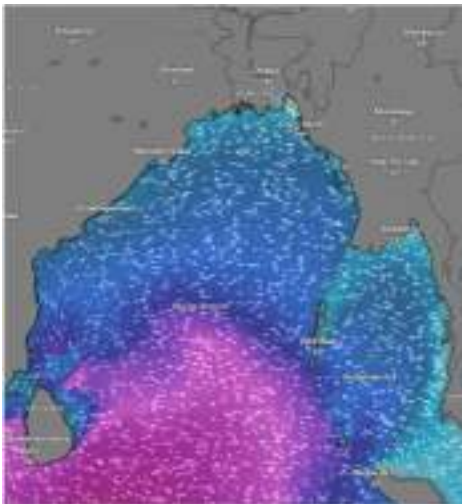
# MARINE WEATHER FORECAST (09 to 16 May 2026)

## OUTER EEZ (18° 48' N, 090° 30' E)

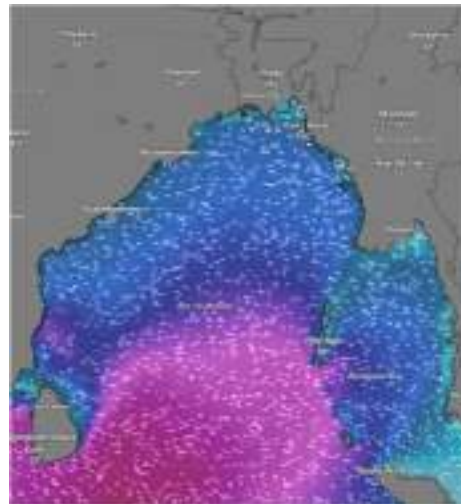


Date	Time	Air Temp (°C)		Sea Surface Temp (°C)	Baro Pressure (mbar)	Wind Direction	Wind Spd (kts)		Wave Ht (m)	Sea State	Humidity (%)	Prob of Rain (%)	Amount of Rain (mm)
		Max	Min				Gusting	Avg					
13-05-26 (Wednesday)	0001	32	26	26	1008	S	10	06	1.9	3	87	24	0.1
	0600			25	1009	S	09	04	1.0	3	89	29	0.2
	1200			29	1007	SSE	10	06	1.1	4	81	35	0.4
	1800			27	1006	S	11	08	1.2	4	84	35	0.4
14-05-26 (Thursday)	0001	32	26	26	1008	SSW	12	09	1.3	4	86	21	0.1
	0600			25	1009	SW	14	10	1.3	4	88	25	0.2
	1200			29	1007	SW	12	08	1.5	4	83	32	0.3
	1800			27	1006	SW	14	10	1.5	4	85	30	0.3
15-05-26 (Friday)	0001	32	26	26	1008	SSW	15	11	1.7	4	88	32	0.0
	0600			25	1009	SSW	12	08	1.7	4	90	24	0.1
	1200			29	1007	SSW	13	08	1.8	4	74	22	0.1
	1800			27	1006	SSW	15	11	1.9	4	86	46	0.5
16-05-26 (Saturday)	0001	32	26	26	1008	SSW	17	13	1.9	4	89	53	0.5
	0600			25	1009	SSW	15	11	2.0	4	90	36	0.4
	1200			29	1007	SSW	14	10	2.0	4	76	25	0.1
	1800			27	1006	SSW	115	10	2.1	4	88	45	0.5

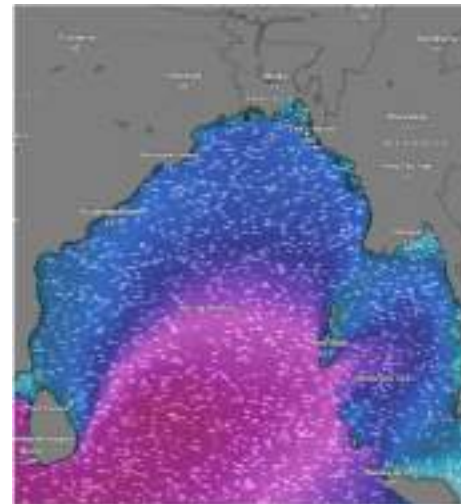
13 May 2026



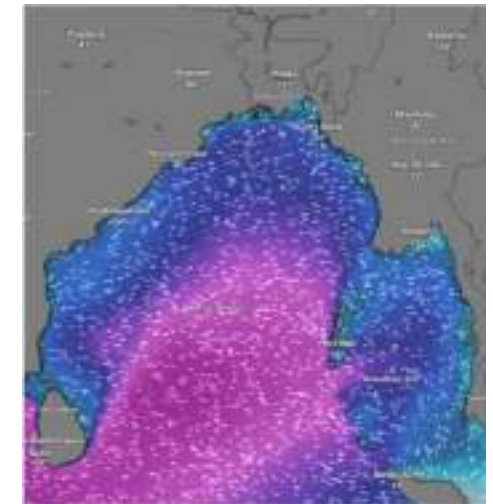
14 May 2026



15 May 2026



16 May 2026



Significant wave height (m)



## PREDICTED SURFACE PRESSURE FORECAST (09 to 15 May 2026)



09 May 2026



10 May 2026



11 May 2026



12 May 2026



13 May 2026



14 May 2026



15 May 2026

