



SUMMARY OF MARINE WEATHER FORECAST
COASTAL AREA OF BANGLADESH
DATE: 08 to 15 Dec 2024



Fleet forecast	A low pressure area has formed over southeast Bay of Bengal and adjoining area. Its associated trough extends upto Northeast Bay.
Wind direction, speed	North/North-easterly 11 kts, (Temporary gusting up to 22 kts).
Wave height & sea state	Wave height: 0.1 to 1.5 m (Sea state:1 to 4).
Sea surface temperature	18°C - 26°C (May remain nearly unchanged).
Baro pressure	1009-1014 mb.
Rainfall	Temporary Partly cloudy sky over Bay of Bengal & adjoining area.
Fog	Light to moderate fog may occur at places over the coastal area during late night till early morning.

Outlook for 08 to 15 Dec 2024: Weather may remain dry with temporary partly cloudy sky and Night and day temperature may fall.

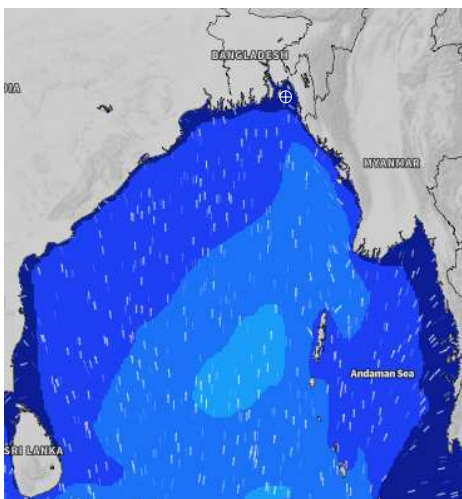


MARINE WEATHER FORECAST (08 to 15 Dec 2024) NEAR AUTHORITY BUOY (22° 12' N, 091° 38' E)

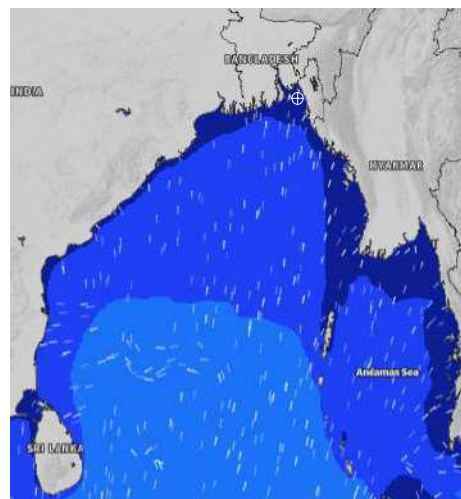


Date	Time	Air Temp (°C)		Sea Surface Temp (°C)	Baro Pressure (mbar)	Wind Direction	Wind Spd (kts)		Wave Ht (m)	Sea State	Humidity (%)	Prob of Rain
		Max	Min				Max	Avg				
08-12-24 (Sunday)	0001	27	16	20	1013	NNE	11	9	0.2	2	83	10% (0.0 mm)
	0600			18	1013	NNE	9	9	0.3	2	88	11% (0.0 mm)
	1200			22	1013	NW	6	5	0.1	1	51	13% (0.0 mm)
	1800			24	1011	NE	8	7	0.1	1	63	11% (0.0 mm)
09-12-24 (Monday)	0001	27	18	20	1012	ENE	8	7	0.1	1	84	10% (0.0 mm)
	0600			19	1012	NE	9	8	0.1	1	92	11% (0.0 mm)
	1200			23	1012	NNW	6	5	0.1	1	59	10% (0.0 mm)
	1800			23	1011	NNW	15	12	0.2	2	66	12% (0.0 mm)
10-12-24 (Tuesday)	0001	28	17	21	1011	NNE	7	6	0.1	1	83	10% (0.0 mm)
	0600			20	1012	NNE	8	7	0.1	1	87	11% (0.0 mm)
	1200			25	1012	NNW	11	10	0.2	2	55	10% (0.0 mm)
	1800			25	1010	NNW	19	14	0.2	2	69	12% (0.0 mm)
11-12-24 (Wednesday)	0001	27	16	22	1013	NE	17	11	0.3	2	83	10% (0.0 mm)
	0600			19	1013	NNE	15	11	0.3	2	87	11% (0.0 mm)
	1200			24	1012	NNW	12	11	0.3	2	52	10% (0.0 mm)
	1800			24	1010	NNW	12	10	0.3	2	66	12% (0.0 mm)

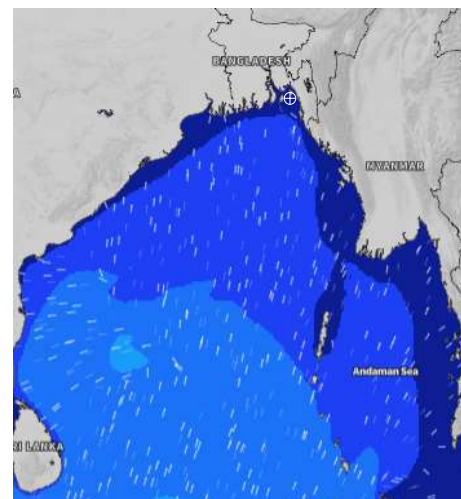
08 Dec 2024



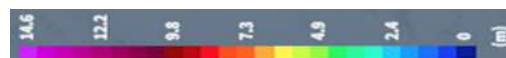
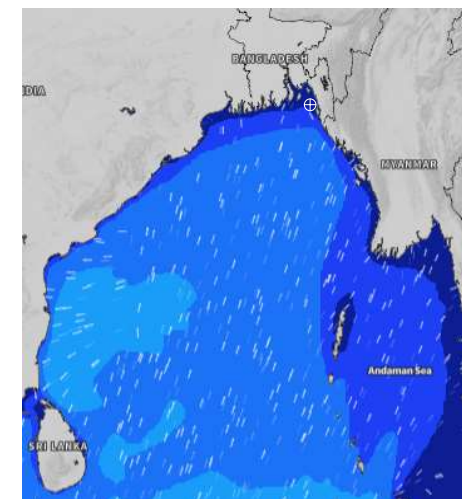
09 Dec 2024



10 Dec 2024



11 Dec 2024



Significant wave height (m)



MARINE WEATHER FORECAST (08 to 15 Dec 2024) NEAR AUTHORITY BUOY (22° 12' N, 091° 38' E)



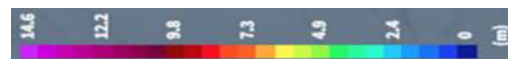
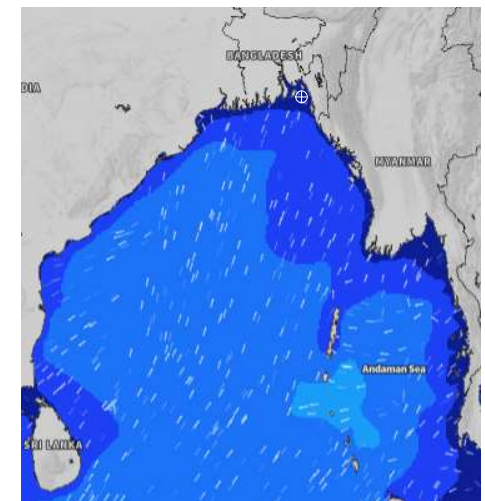
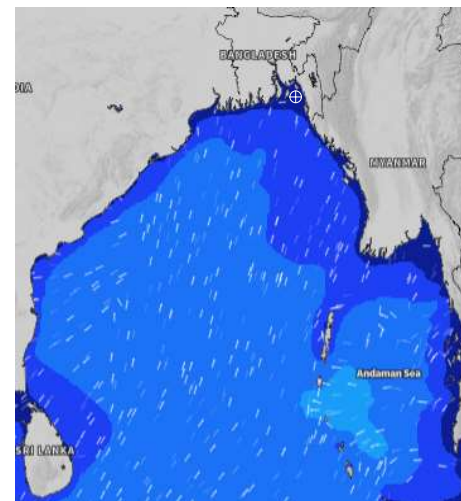
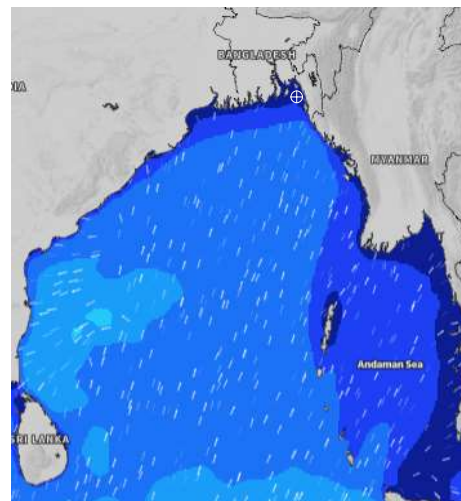
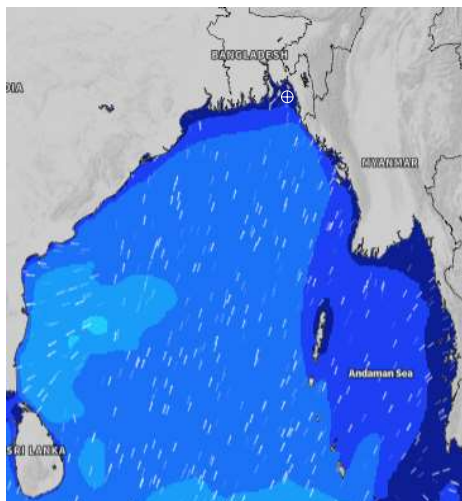
Date	Time	Air Temp (°C)		Sea Surface Temp (°C)	Baro Pressure (mbar)	Wind Direction	Wind Spd (kts)		Wave Ht (m)	Sea State	Humidity (%)	Prob of Rain
		Max	Min				Max	Avg				
12-12-24 (Thursday)	0001	27	15	20	1012	N	14	10	0.3	2	84	10% (0.0 mm)
	0600			18	1011	NNE	11	9	0.2	2	85	11% (0.0 mm)
	1200			23	1011	NE	10	9	0.3	2	52	10% (0.0 mm)
	1800			24	1010	NE	17	11	0.3	2	64	11% (0.0 mm)
13-12-24 (Friday)	0001	27	15	20	1012	NNE	11	8	0.1	1	85	14% (0.0 mm)
	0600			19	1012	NNE	10	8	0.1	1	92	11% (0.0 mm)
	1200			24	1012	NW	8	7	0.1	1	59	10% (0.0 mm)
	1800			24	1011	NW	14	10	0.1	1	66	12% (0.0 mm)
14-12-24 (Saturday)	0001	27	16	21	1013	NNE	8	7	0.1	1	83	14% (0.0 mm)
	0600			19	1013	NNE	9	8	0.1	1	87	11% (0.0 mm)
	1200			23	1013	NW	10	9	0.2	2	55	10% (0.0 mm)
	1800			25	1011	NW	12	11	0.3	2	69	12% (0.0 mm)
15-12-24 (Sunday)	0001	27	15	21	1012	NNE	11	10	0.2	2	83	14% (0.0 mm)
	0600			19	1013	NNE	10	9	0.3	2	87	11% (0.0 mm)
	1200			23	1013	NW	10	9	0.1	1	52	10% (0.0 mm)
	1800			24	1011	NW	11	10	0.2	2	66	12% (0.0 mm)

12 Dec 2024

13 Dec 2024

14 Dec 2024

15 Dec 2024



Significant wave height (m)



MARINE WEATHER FORECAST (08 to 15 Dec 2024) 20 NM WEST OF ELEPHANT POINT (21° 10' N, 091° 42' E)



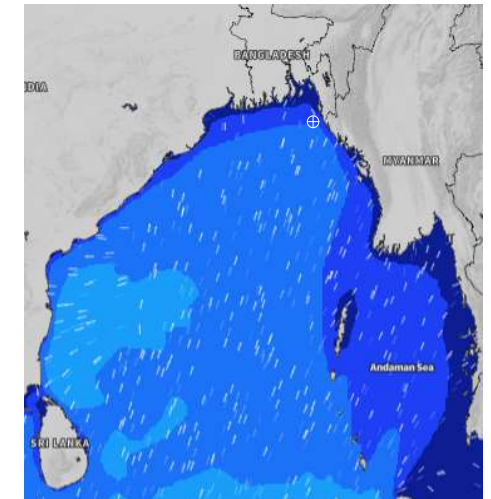
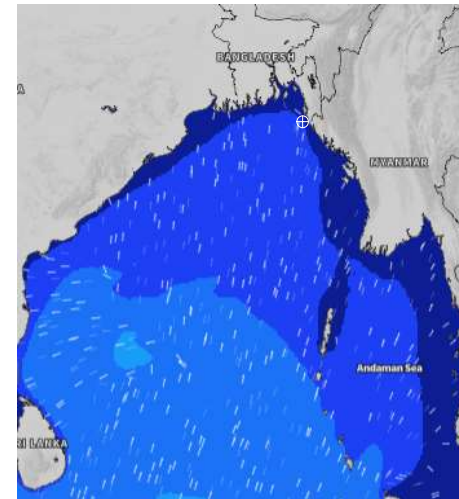
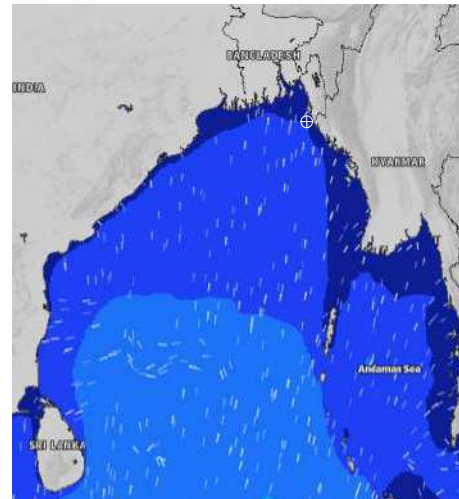
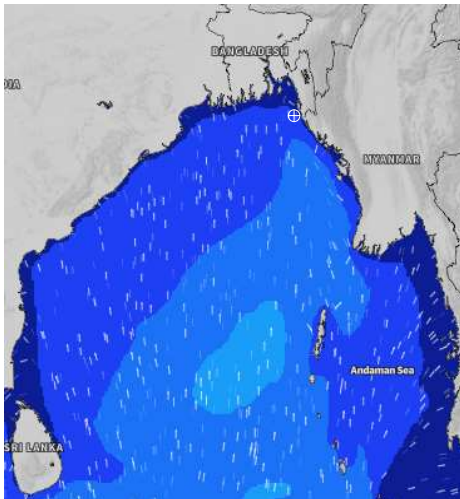
Date	Time	Air Temp (°C)		Sea Surface Temp (°C)	Baro Pressure (mbar)	Wind Direction	Wind Spd (kts)		Wave Ht (m)	Sea State	Humidity (%3)	Prob of Rain
		Max	Min				Max	Avg				
08-12-24 (Sunday)	0001	28	17	25	1013	N	14	13	0.8	3	87	12% (0.0 mm)
	0600			22	1012	NNE	14	13	0.7	3	88	14% (0.0 mm)
	1200			23	1013	NNE	9	8	0.6	3	53	11% (0.0 mm)
	1800			24	1011	NNE	10	9	0.6	3	70	13% (0.0 mm)
09-12-24 (Monday)	0001	28	19	24	1012	NNE	8	7	0.6	3	87	12% (0.0 mm)
	0600			23	1012	NNE	10	9	0.6	3	89	14% (0.0 mm)
	1200			23	1012	SE	11	10	0.5	2	57	12% (0.0 mm)
	1800			25	1011	NW	12	11	0.6	3	75	10% (0.0 mm)
10-12-24 (Tuesday)	0001	29	18	24	1011	N	9	8	0.5	2	86	12% (0.0 mm)
	0600			23	1012	NNE	11	10	0.5	2	85	14% (0.0 mm)
	1200			23	1012	N	16	15	0.7	3	52	12% (0.0 mm)
	1800			24	1010	NNW	18	16	0.9	3	72	10% (0.0 mm)
11-12-24 (Wednesday)	0001	27	17	26	1012	NNE	19	18	1.0	3	83	12% (0.0 mm)
	0600			23	1012	NNE	21	19	1.0	3	85	14% (0.0 mm)
	1200			24	1012	N	19	18	1.0	3	53	12% (0.0 mm)
	1800			25	1010	NNW	17	17	1.1	3	68	10% (0.0 mm)

08 Dec 2024

09 Dec 2024

10 Dec 2024

11 Dec 2024



Significant wave height (m)

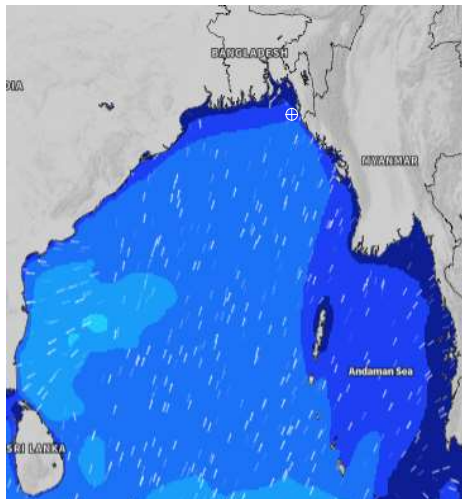


MARINE WEATHER FORECAST (08 to 15 Dec 2024) 20 NM WEST OF ELEPHANT POINT (21° 10'N, 091° 42'E)

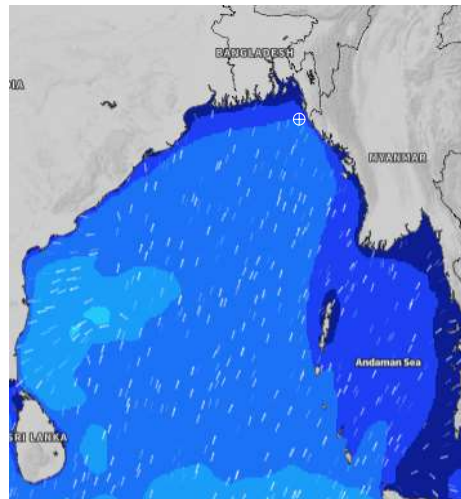


Date	Time	Air Temp (°C)		Sea Surface Temp (°C)	Baro Pressure (mbar)	Wind Direction	Wind Spd (kts)		Wave Ht (m)	Sea State	Humidity (%)	Prob of Rain
		Max	Min				Max	Avg				
12-12-24 (Thursday)	0001	27	16	25	1011	N	18	17	1.0	3	86	10% (0.0 mm)
	0600			23	1010	N	20	18	1.0	3	85	11% (0.0 mm)
	1200			23	1011	NNE	16	16	1.0	3	52	10% (0.0 mm)
	1800			25	1010	NNE	15	15	1.1	3	71	10% (0.0 mm)
13-12-24 (Friday)	0001	28	16	25	1012	N	14	14	0.9	3	87	13% (0.0 mm)
	0600			23	1011	N	14	13	0.9	3	86	14% (0.0 mm)
	1200			23	1011	NNE	13	13	0.9	3	56	12% (0.0 mm)
	1800			25	1010	NNE	14	14	0.9	3	72	13% (0.0 mm)
14-12-24 (Saturday)	0001	28	17	25	1012	N	11	10	0.8	3	86	13% (0.0 mm)
	0600			23	1012	N	12	10	0.7	3	85	14% (0.0 mm)
	1200			24	1011	NNE	12	10	0.8	3	52	12% (0.0 mm)
	1800			25	1011	NNW	14	13	0.8	3	72	13% (0.0 mm)
15-12-24 (Sunday)	0001	28	17	25	1012	N	11	10	0.7	3	83	13% (0.0 mm)
	0600			23	1012	N	14	13	0.7	3	85	14% (0.0 mm)
	1200			24	1013	NNW	12	10	0.7	3	53	12% (0.0 mm)
	1800			25	1011	NNW	13	12	0.8	3	68	13% (0.0 mm)

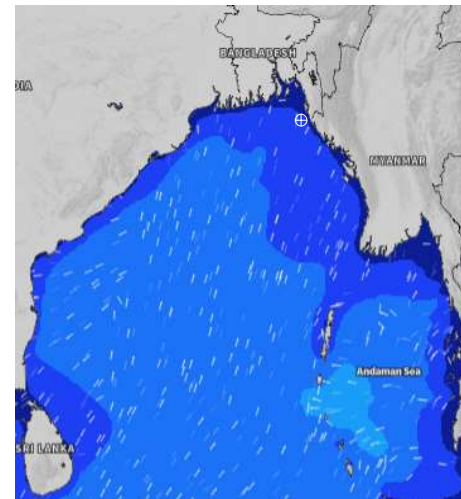
12 Dec 2024



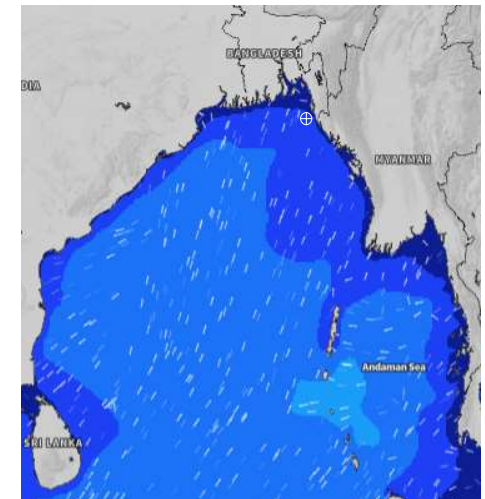
13 Dec 2024



14 Dec 2024



15 Dec 2024



Significant wave height (m)



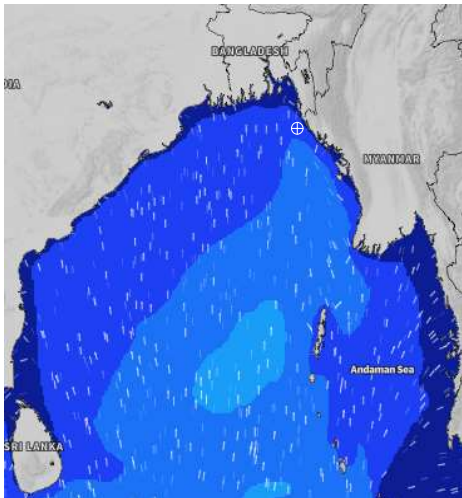
MARINE WEATHER FORECAST (08 to 15 Dec 2024)

15 NM WEST OF ST. MARTIN'S LIGHT HOUSE (20° 37' N, 092° 03' E)

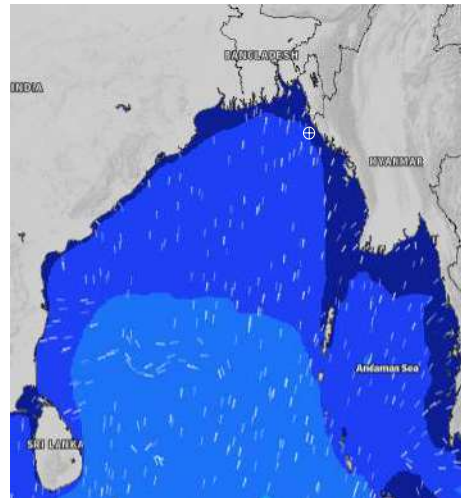


Date	Time	Air Temp (°C)		Sea Surface Temp (°C)	Baro Pressure (mbar)	Wind Direction	Wind Spd (kts)		Wave Ht (m)	Sea State	Humidity (%)	Prob of Rain
		Max	Min				Max	Avg				
08-12-24 (Sunday)	0001	28	18	25	1013	N	13	12	1.0	3	85	11% (0.0 mm)
	0600			24	1011	N	14	13	1.0	3	86	10% (0.0 mm)
	1200			23	1014	NNE	7	6	0.8	3	54	11% (0.0 mm)
	1800			25	1011	N	8	7	0.7	3	71	10% (0.0 mm)
09-12-24 (Monday)	0001	28	20	25	1012	N	9	8	0.7	3	86	13% (0.0 mm)
	0600			24	1011	NNE	8	7	0.6	3	87	12% (0.0 mm)
	1200			24	1014	E	6	5	0.6	3	60	14% (0.0 mm)
	1800			26	1010	NW	11	10	0.6	3	76	15% (0.0 mm)
10-12-24 (Tuesday)	0001	30	20	26	1011	N	9	8	0.7	3	84	13% (0.0 mm)
	0600			25	1011	NNE	8	7	0.6	3	85	12% (0.0 mm)
	1200			25	1012	NW	11	10	0.6	3	54	14% (0.0 mm)
	1800			26	1009	NW	17	15	0.7	3	68	15% (0.0 mm)
11-12-24 (Wednesday)	0001	28	18	27	1011	N	20	19	1.3	4	79	13% (0.0 mm)
	0600			25	1010	N	22	21	1.5	4	78	12% (0.0 mm)
	1200			25	1012	NNW	18	18	1.4	4	53	14% (0.0 mm)
	1800			26	1009	NNW	20	20	1.5	4	65	15% (0.0 mm)

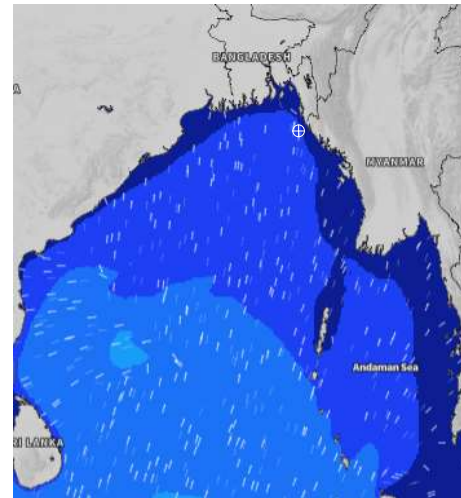
08 Dec 2024



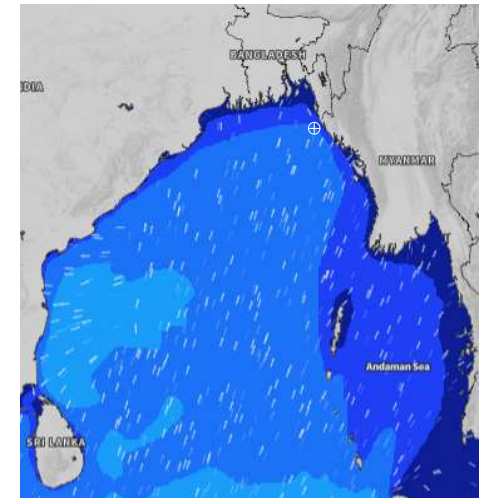
09 Dec 2024



10 Dec 2024



11 Dec 2024



Significant wave height (m)



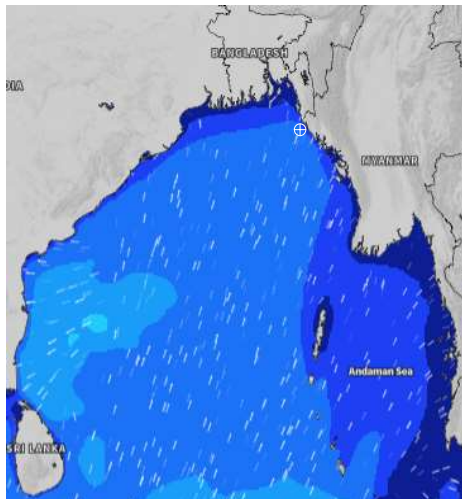
MARINE WEATHER FORECAST (08 to 15 Dec 2024)

15 NM WEST OF ST. MARTIN'S LIGHT HOUSE (20° 37' N, 092° 03' E)

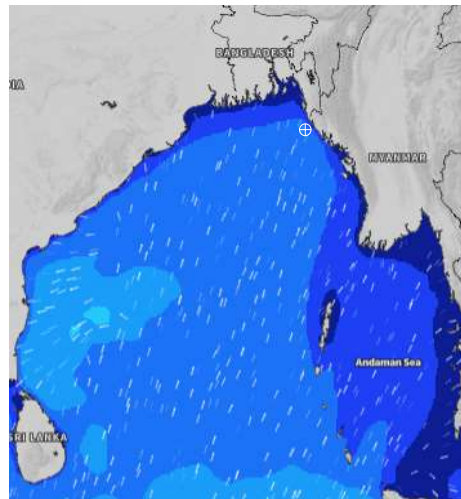


Date	Time	Air Temp (°C)		Sea Surface Temp (°C)	Baro Pressure (mbar)	Wind Direction	Wind Spd (kts)		Wave Ht (m)	Sea State	Humidity (%)	Prob of Rain
		Max	Min				Max	Avg				
12-12-24 (Thursday)	0001	29	18	26	1011	N	18	17	1.4	4	84	14% (0.0 mm)
	0600			24	1009	N	20	19	1.5	4	85	12% (0.0 mm)
	1200			24	1012	N	16	16	1.3	4	54	13% (0.0 mm)
	1800			25	1009	NNE	17	17	1.4	4	72	15% (0.0 mm)
13-12-24 (Friday)	0001	29	18	26	1011	NNE	15	14	1.3	4	84	12% (0.0 mm)
	0600			24	1010	N	15	14	1.2	3	86	14% (0.0 mm)
	1200			24	1013	N	11	10	1.1	3	59	13% (0.0 mm)
	1800			25	1009	NNE	10	9	1.1	3	72	14% (0.0 mm)
14-12-24 (Saturday)	0001	29	19	26	1012	NNE	10	9	1.1	3	84	12% (0.0 mm)
	0600			25	1011	N	12	11	1.0	3	85	14% (0.0 mm)
	1200			24	1014	N	11	10	1.0	3	54	13% (0.0 mm)
	1800			25	1010	NW	11	10	1.0	3	68	14% (0.0 mm)
15-12-24 (Sunday)	0001	29	19	26	1012	NNW	11	10	1.0	3	79	12% (0.0 mm)
	0600			25	1011	N	12	11	0.9	3	78	14% (0.0 mm)
	1200			25	1014	N	10	9	0.8	3	53	13% (0.0 mm)
	1800			25	1010	NW	12	11	0.9	3	65	14% (0.0 mm)

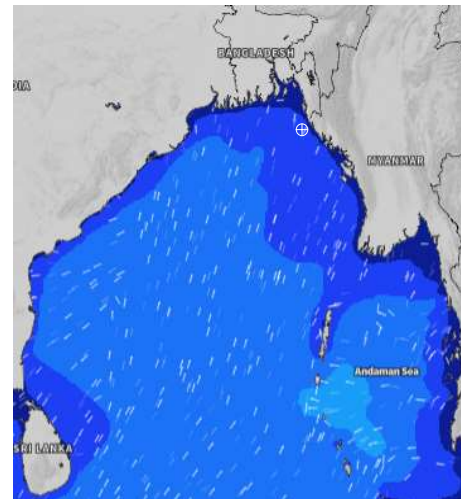
12 Dec 2024



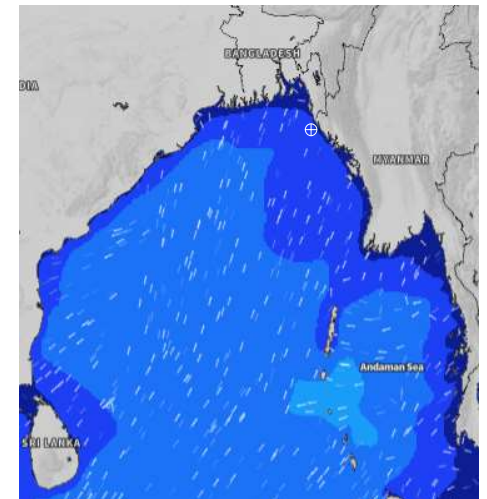
13 Dec 2024



14 Dec 2024



15 Dec 2024



Significant wave height (m)



MARINE WEATHER FORECAST (08 to 15 Dec 2024)

40 NM EAST OF PAYRA FAIRWAY (21° 07' N, 090° 45' E)



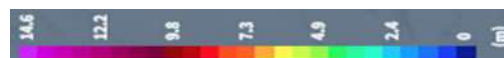
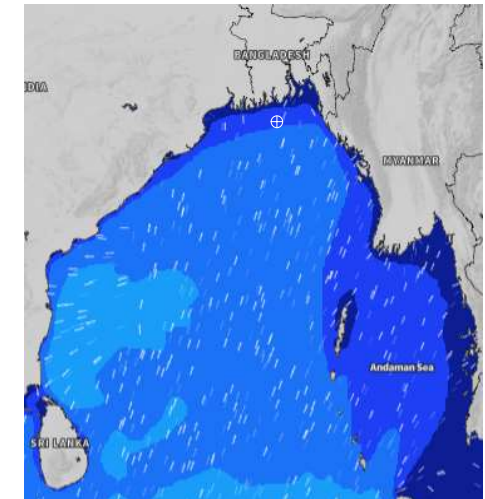
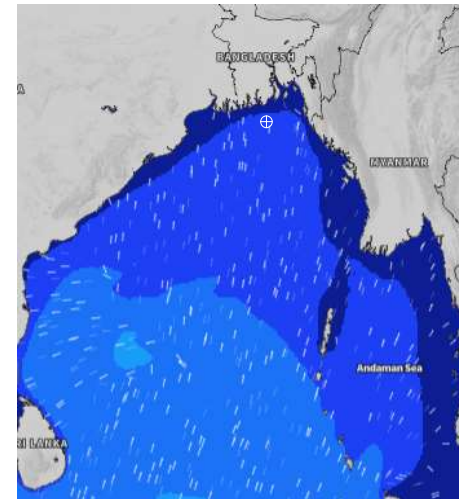
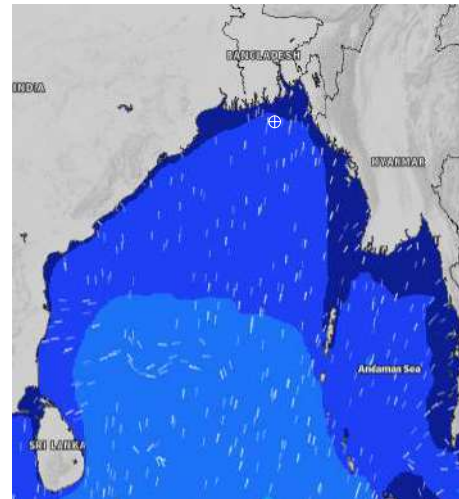
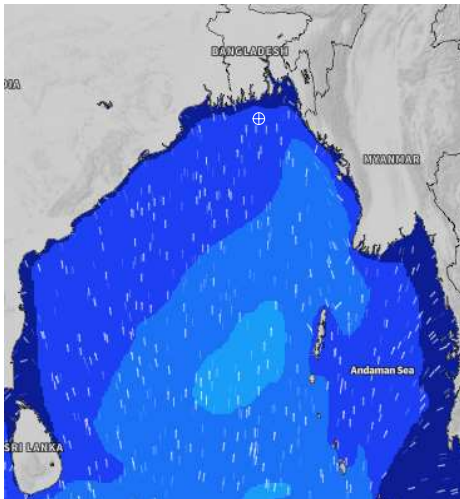
Date	Time	Air Temp (°C)		Sea Surface Temp (°C)	Baro Pressure (mbar)	Wind Direction	Wind Spd (kts)		Wave Ht (m)	Sea State	Humidity (%)	Prob of Rain
		Max	Min				Max	Avg				
08-12-24 (Sunday)	0001	26	17	25	1012	N	12	11	0.9	3	82	11% (0.0 mm)
	0600			24	1012	NNE	14	13	1.0	3	84	12% (0.0 mm)
	1200			24	1013	N	10	9	0.9	3	45	12% (0.0 mm)
	1800			24	1012	N	10	9	0.8	3	63	10% (0.0 mm)
09-12-24 (Monday)	0001	27	19	25	1012	NNE	9	8	0.8	3	80	16% (0.0 mm)
	0600			25	1012	NNE	11	10	0.8	3	82	13% (0.0 mm)
	1200			25	1012	NE	6	5	0.7	3	52	15% (0.0 mm)
	1800			25	1011	N	14	13	0.7	3	67	12% (0.0 mm)
10-12-24 (Tuesday)	0001	27	18	25	1012	N	9	8	0.7	3	83	16% (0.0 mm)
	0600			25	1011	NNE	12	10	0.7	3	84	13% (0.0 mm)
	1200			24	1014	NNE	13	12	0.8	3	60	15% (0.0 mm)
	1800			25	1011	NNE	16	15	0.8	3	73	12% (0.0 mm)
11-12-24 (Wednesday)	0001	26	16	25	1012	NNE	18	17	1.0	3	81	16% (0.0 mm)
	0600			24	1012	NNE	19	18	1.2	3	82	13% (0.0 mm)
	1200			24	1013	N	18	17	1.2	3	50	15% (0.0 mm)
	1800			24	1011	N	17	16	1.1	3	56	12% (0.0 mm)

08 Dec 2024

09 Dec 2024

10 Dec 2024

11 Dec 2024



Significant wave height (m)



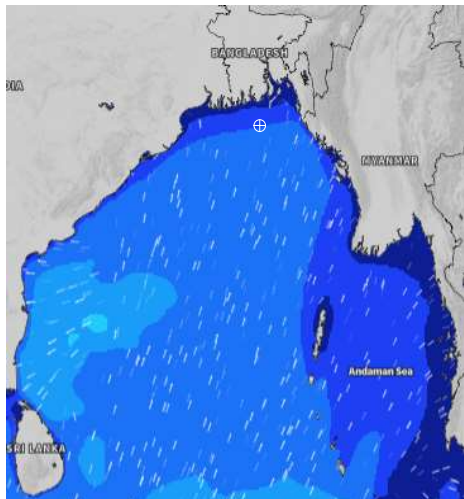
MARINE WEATHER FORECAST (08 to 15 Dec 2024)

40 NM EAST OF PAYRA FAIRWAY (21° 07' N, 090° 45' E)

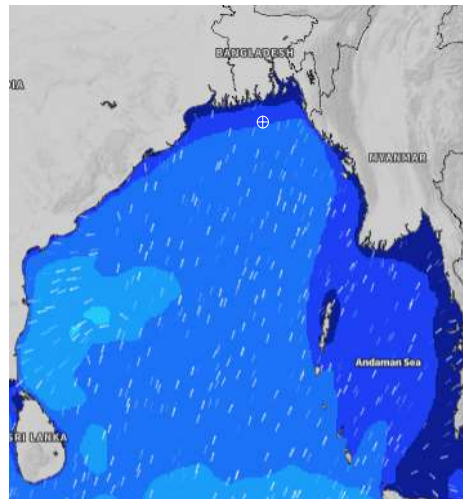


Date	Time	Air Temp (°C)		Sea Surface Temp (°C)	Baro Pressure (mbar)	Wind Direction	Wind Spd (kts)		Wave Ht (m)	Sea State	Humidity (%)	Prob of Rain
		Max	Min				Max	Avg				
12-12-24 (Thursday)	0001	26	16	25	1012	N	16	15	1.2	3	83	10% (0.0 mm)
	0600			23	1011	NNE	20	18	1.4	4	85	11% (0.0 mm)
	1200			23	1011	NE	16	15	1.3	4	46	15% (0.0 mm)
	1800			25	1010	N	15	14	1.2	3	65	14% (0.0 mm)
13-12-24 (Friday)	0001	26	16	25	1012	NW	15	14	1.1	3	82	13% (0.0 mm)
	0600			24	1012	N	16	15	1.3	4	83	15% (0.0 mm)
	1200			23	1012	N	14	13	1.2	3	54	12% (0.0 mm)
	1800			24	1011	NNE	12	11	1.1	3	66	14% (0.0 mm)
14-12-24 (Saturday)	0001	26	16	25	1012	N	14	13	1.0	3	83	13% (0.0 mm)
	0600			24	1012	N	14	13	1.0	3	84	15% (0.0 mm)
	1200			24	1014	NE	14	12	1.0	3	60	12% (0.0 mm)
	1800			25	1011	N	11	10	1.0	3	73	14% (0.0 mm)
15-12-24 (Sunday)	0001	26	16	25	1012	NNE	12	9	0.8	3	81	13% (0.0 mm)
	0600			24	1012	N	16	16	1.0	3	82	15% (0.0 mm)
	1200			23	1013	N	13	12	1.0	3	50	12% (0.0 mm)
	1800			25	1012	N	10	9	0.9	3	56	14% (0.0 mm)

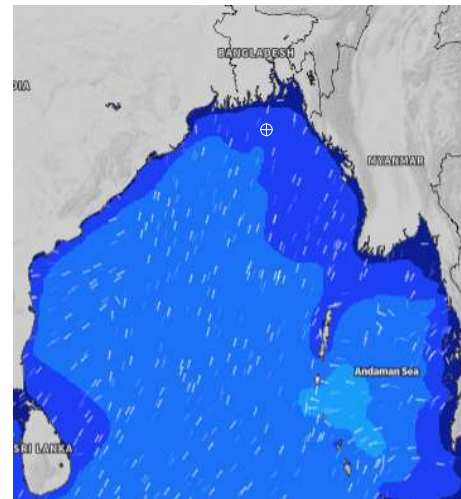
12 Dec 2024



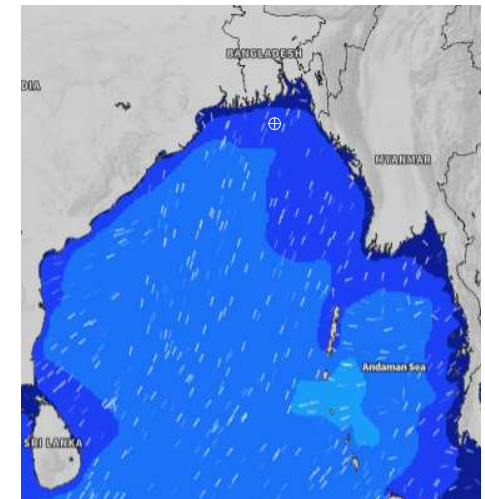
13 Dec 2024



14 Dec 2024



15 Dec 2024



Significant wave height (m)



MARINE WEATHER FORECAST (08 to 15 Dec 2024)

10 NM SOUTH OF MONGLA FAIRWAY (21° 16' N, 089° 34' E)



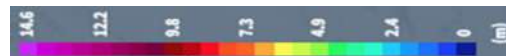
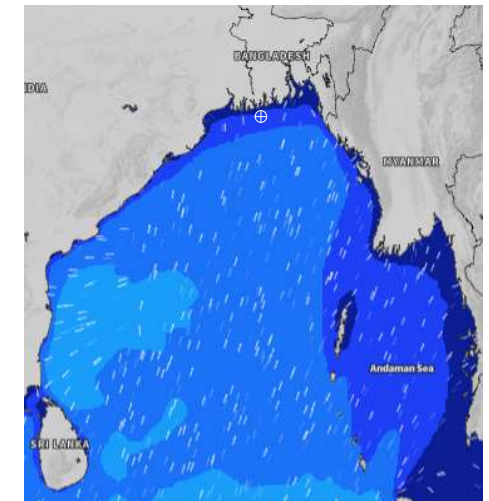
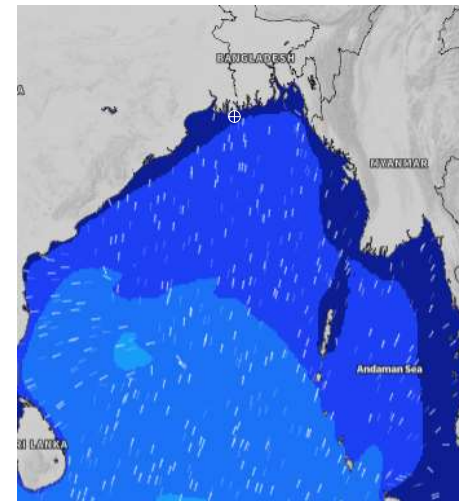
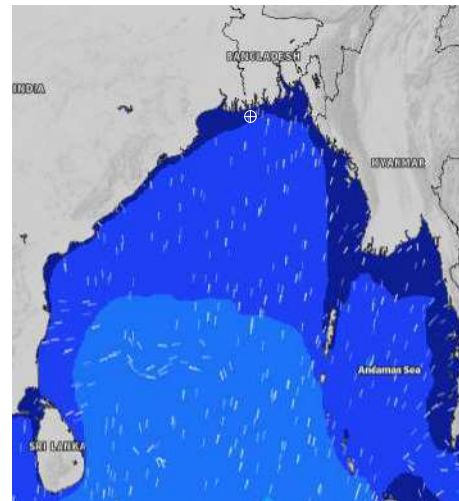
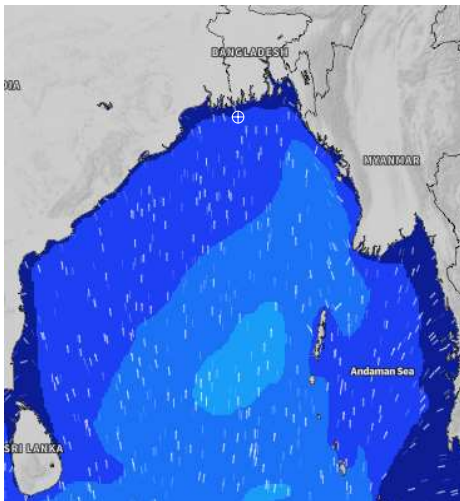
Date	Time	Air Temp (°C)		Sea Surface Temp (°C)	Baro Pressure (mbar)	Wind Direction	Wind Spd (kts)		Wave Ht (m)	Sea State	Humidity (%)	Prob of Rain
		Max	Min				Max	Avg				
08-12-24 (Sunday)	0001	27	16	24	1013	NE	6	5	0.7	3	82	11% (0.0 mm)
	0600			23	1013	NNE	12	11	0.8	3	86	12% (0.0 mm)
	1200			23	1013	NNE	8	7	0.8	3	41	11% (0.0 mm)
	1800			24	1012	E	7	6	0.8	3	59	12% (0.0 mm)
09-12-24 (Monday)	0001	27	18	25	1012	N	6	5	0.7	3	83	15% (0.0 mm)
	0600			24	1012	NE	9	8	0.6	3	87	13% (0.0 mm)
	1200			24	1014	NE	5	4	0.6	3	49	10% (0.0 mm)
	1800			25	1012	N	11	10	0.6	3	63	13% (0.0 mm)
10-12-24 (Tuesday)	0001	27	16	25	1012	NE	6	5	0.6	3	87	15% (0.0 mm)
	0600			24	1012	NNE	9	8	0.6	3	90	13% (0.0 mm)
	1200			24	1013	NNE	10	9	0.6	3	57	10% (0.0 mm)
	1800			25	1013	NNE	8	7	0.6	3	64	13% (0.0 mm)
11-12-24 (Wednesday)	0001	26	14	25	1013	NE	14	13	0.7	3	82	15% (0.0 mm)
	0600			24	1013	N	17	16	0.9	3	83	13% (0.0 mm)
	1200			24	1013	N	17	16	1.0	3	45	10% (0.0 mm)
	1800			26	1013	ENE	15	14	0.8	3	59	13% (0.0 mm)

08 Dec 2024

09 Dec 2024

10 Dec 2024

11 Dec 2024



Significant wave height (m)

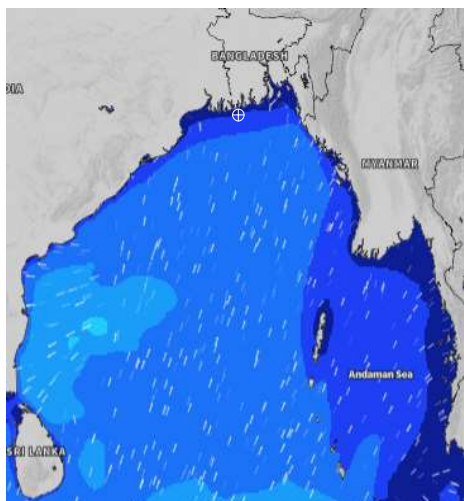


MARINE WEATHER FORECAST (08 to 15 Dec 2024) 10 NM SOUTH OF MONGLA FAIRWAY (21° 16' N, 089° 34' E)

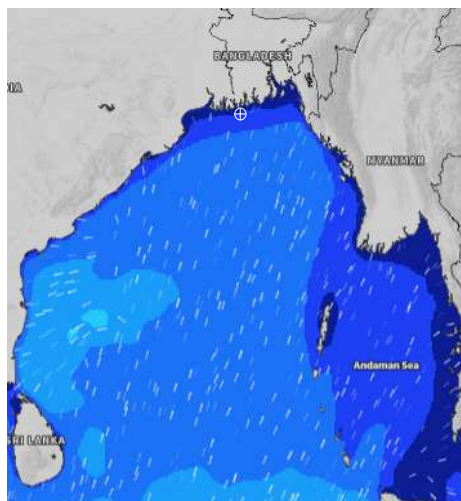


Date	Time	Air Temp (°C)		Sea Surface Temp (°C)	Baro Pressure (mbar)	Wind Direction	Wind Spd (kts)		Wave Ht (m)	Sea State	Humidity (%)	Prob of Rain
		Max	Min				Max	Avg				
12-12-24 (Thursday)	0001	26	14	24	1012	NNE	13	12	0.9	3	82	10% (0.0 mm)
	0600			23	1012	N	16	14	1.0	3	87	10% (0.0 mm)
	1200			23	1012	N	15	14	1.1	3	45	11% (0.0 mm)
	1800			25	1011	N	13	12	0.9	3	61	13% (0.0 mm)
13-12-24 (Friday)	0001	26	14	24	1013	NNE	14	13	1.0	3	84	15% (0.0 mm)
	0600			23	1012	N	16	14	1.1	3	86	14% (0.0 mm)
	1200			23	1012	N	14	13	1.1	3	52	16% (0.0 mm)
	1800			25	1011	NE	6	5	1.0	3	64	12% (0.0 mm)
14-12-24 (Saturday)	0001	26	14	25	1013	N	13	12	0.9	3	86	15% (0.0 mm)
	0600			23	1013	N	16	14	1.0	3	89	14% (0.0 mm)
	1200			23	1014	NNE	14	12	1.1	3	56	16% (0.0 mm)
	1800			25	1012	NW	11	10	1.0	3	64	12% (0.0 mm)
15-12-24 (Sunday)	0001	26	14	25	1013	NNE	15	14	0.8	3	82	15% (0.0 mm)
	0600			23	1013	N	16	15	0.9	3	83	14% (0.0 mm)
	1200			23	1014	N	12	11	0.8	3	45	16% (0.0 mm)
	1800			24	1012	N	10	9	0.8	3	59	12% (0.0 mm)

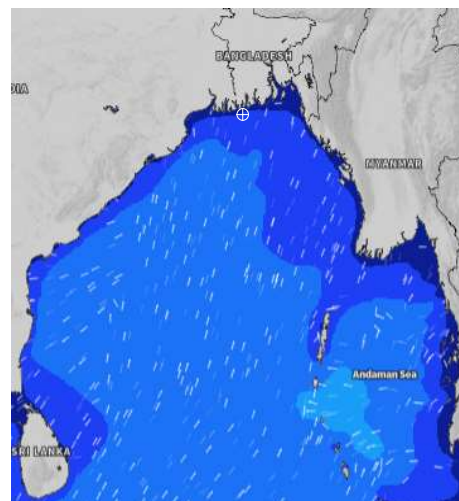
12 Dec 2024



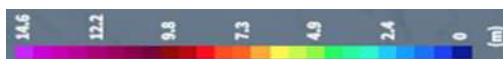
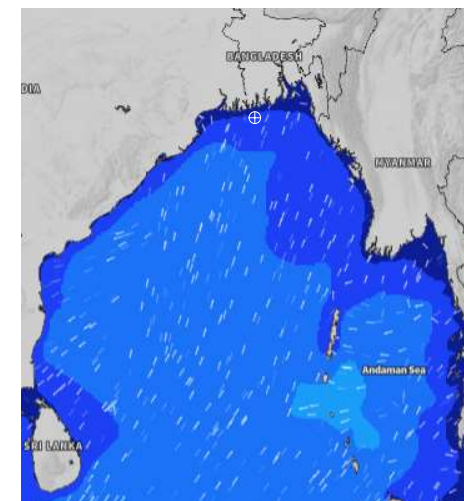
13 Dec 2024



14 Dec 2024



15 Dec 2024



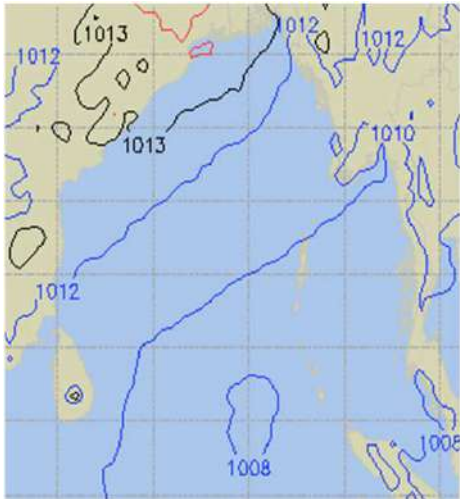
Significant wave height (m)



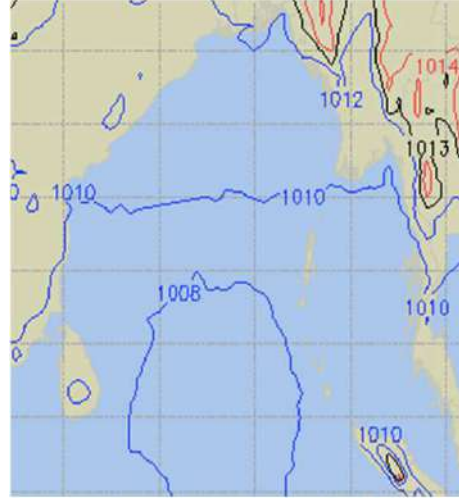
PREDICTED SURFACE PRESSURE FORECAST (08 to 14 Dec 2024)



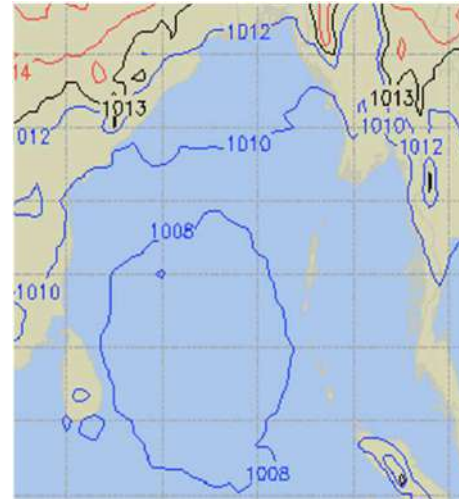
08 Dec 2024



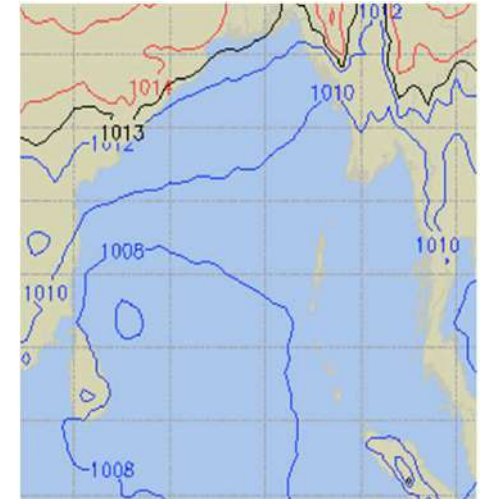
09 Dec 2024



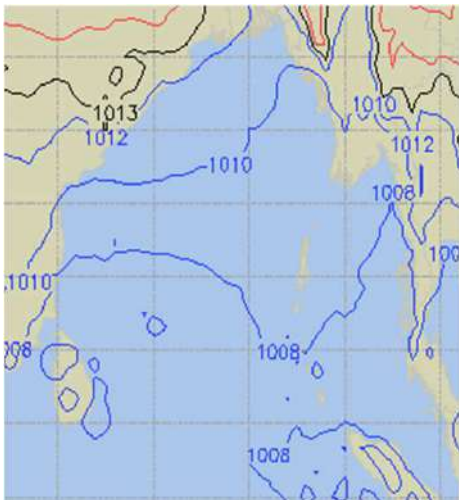
10 Dec 2024



11 Dec 2024



12 Dec 2024



13 Dec 2024



14 Dec 2024

