



SUMMARY OF MARINE WEATHER FORECAST
COASTAL AREA OF BANGLADESH
DATE: 08 to 15 Oct 2024



Fleet forecast	Trough of low lies over North Bay. Monsoon is moderate over North Bay.
Wind direction, speed	South/south-westerly 6 kts, (Temporary gusting up to 15 kts).
Wave height & sea state	Wave height: 0.1 to 1.2 m (Sea state:1 to 3).
Sea surface temperature	26°C - 29°C (May remain nearly unchanged).
Baro pressure	1008 - 1014 mb
Rainfall	Light to moderate rain/thunder showers over Bay of Bengal & adjoining area.

Outlook for 08 to 15 Oct 2024: Rainfall activity is likely to decrease at the end of said period.

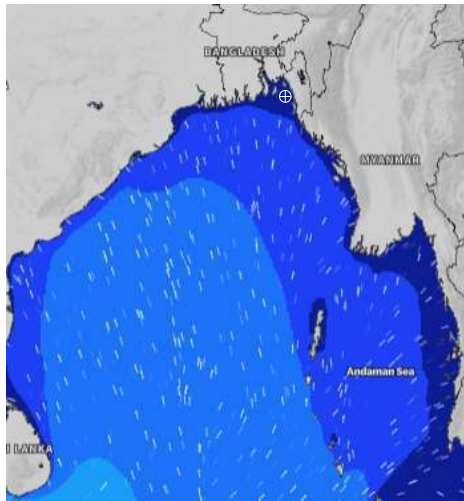


MARINE WEATHER FORECAST (08 to 15 Oct 2024) NEAR AUTHORITY BUOY (22° 12' N, 091° 38' E)

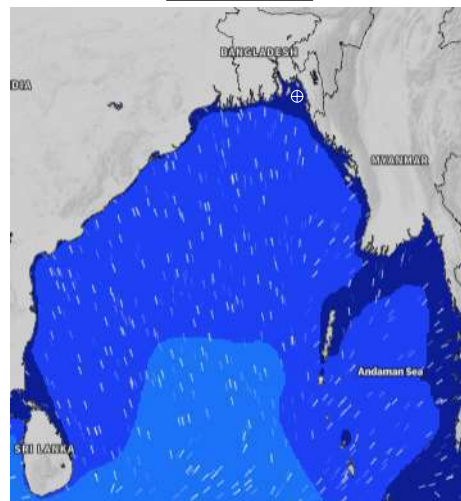


Date	Time	Air Temp (°C)		Sea Surface Temp (°C)	Baro Pressure (mbar)	Wind Direction	Wind Spd (kts)		Wave Ht (m)	Sea State	Humidity (%)	Prob of Rain
		Max	Min				Max	Avg				
08-10-24 (Tuesday)	0001	32	26	27	1013	NNE	5	4	0.1	1	91	10% (0.0 mm)
	0600			26	1013	NE	5	4	0.1	1	95	11% (0.0 mm)
	1200			28	1013	WNW	7	6	0.1	1	70	12% (0.0 mm)
	1800			29	1010	W	7	6	0.1	1	79	10% (0.0 mm)
09-10-24 (Wednesday)	0001	31	26	28	1011	NW	5	4	0.1	1	90	39% (0.2 mm)
	0600			26	1011	ESE	5	4	0.1	1	95	70% (1.0 mm)
	1200			29	1010	WSW	6	5	0.1	1	75	39% (0.2 mm)
	1800			29	1008	WSW	6	5	0.1	1	81	10% (0.0 mm)
10-10-24 (Thursday)	0001	30	26	28	1009	SSW	3	2	0.1	1	91	49% (0.4 mm)
	0600			28	1009	SE	5	4	0.1	1	95	45% (0.4 mm)
	1200			29	1009	WSW	7	6	0.1	1	76	36% (0.2 mm)
	1800			29	1008	WSW	8	7	0.1	1	83	22% (0.0 mm)
11-10-24 (Friday)	0001	30	26	28	1009	SSW	7	6	0.1	1	91	24% (0.0 mm)
	0600			27	1009	SE	9	8	0.1	1	94	58% (0.4 mm)
	1200			29	1009	SW	9	8	0.1	1	76	43% (0.3 mm)
	1800			29	1008	SW	7	6	0.1	1	81	10% (0.0 mm)

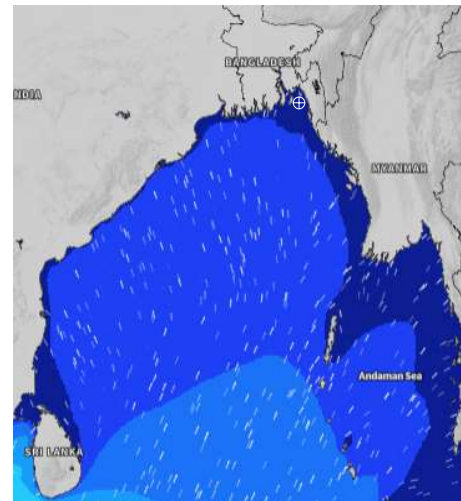
08 Oct 2024



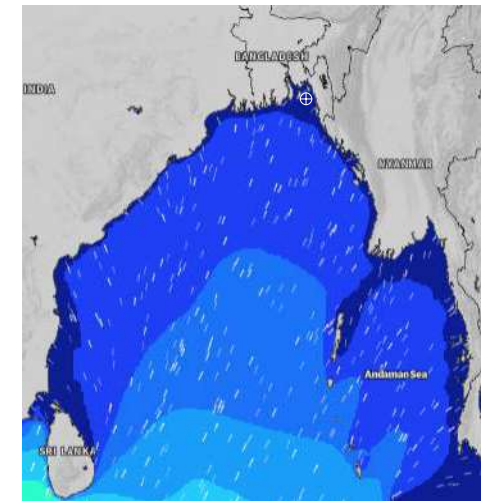
09 Oct 2024



10 Oct 2024



11 Oct 2024



Significant wave height (m)

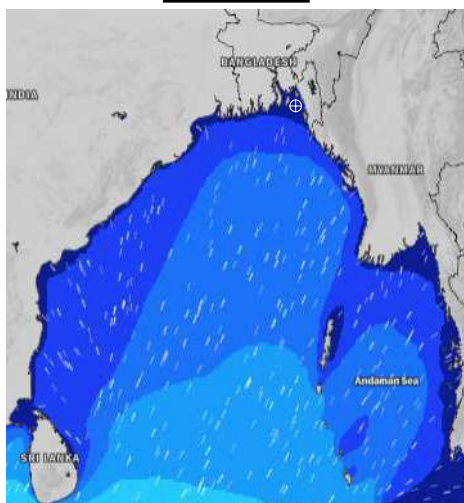


MARINE WEATHER FORECAST (08 to 15 Oct 2024) NEAR AUTHORITY BUOY (22° 12' N, 091° 38' E)

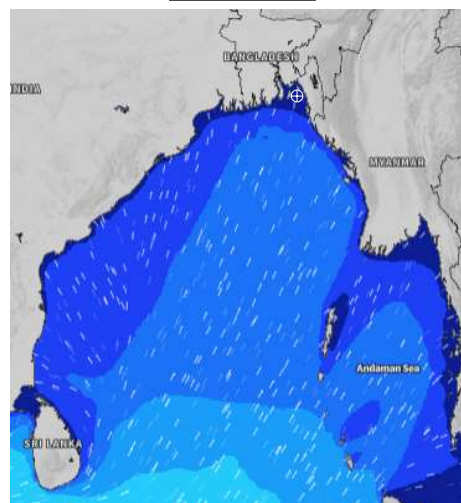


Date	Time	Air Temp (°C)		Sea Surface Temp (°C)	Baro Pressure (mbar)	Wind Direction	Wind Spd (kts)		Wave Ht (m)	Sea State	Humidity (%)	Prob of Rain
		Max	Min				Max	Avg				
12-10-24 (Saturday)	0001	31	26	28	1010	S	4	3	0.1	1	90	24% (0.0 mm)
	0600			27	1011	SSE	6	5	0.1	1	94	52% (0.4 mm)
	1200			28	1011	SW	6	5	0.1	1	74	24% (0.0 mm)
	1800			28	1008	WSW	6	5	0.1	1	81	10% (0.0 mm)
13-10-24 (Sunday)	0001	32	26	28	1010	ESE	3	2	0.1	1	91	40% (0.4 mm)
	0600			26	1011	SE	7	6	0.1	1	94	44% (0.4 mm)
	1200			28	1011	SW	6	5	0.1	1	76	43% (0.4 mm)
	1800			28	1008	W	6	5	0.1	1	82	24% (0.1 mm)
14-10-24 (Monday)	0001	32	25	27	1010	ENE	5	4	0.1	1	92	50% (0.5 mm)
	0600			26	1010	ENE	7	6	0.1	1	92	57% (0.5 mm)
	1200			29	1010	WNW	6	5	0.1	1	76	39% (0.3 mm)
	1800			29	1008	WNW	11	8	0.2	2	81	24% (0.0 mm)
15-10-24 (Tuesday)	0001	32	25	27	1010	NE	6	5	0.1	1	92	50% (0.5 mm)
	0600			26	1011	NE	8	7	0.1	1	92	57% (0.5 mm)
	1200			29	1010	WNW	7	6	0.1	1	76	39% (0.3 mm)
	1800			29	1008	WNW	12	9	0.2	2	81	24% (0.0 mm)

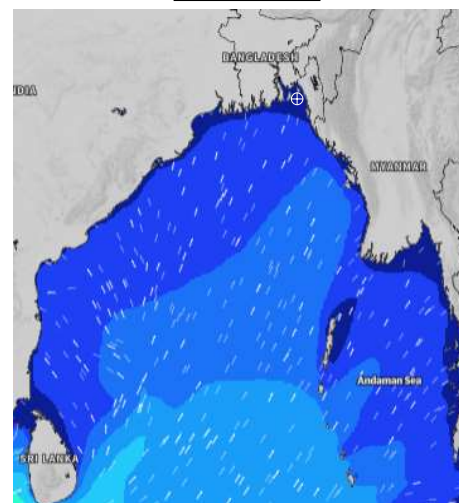
12 Oct 2024



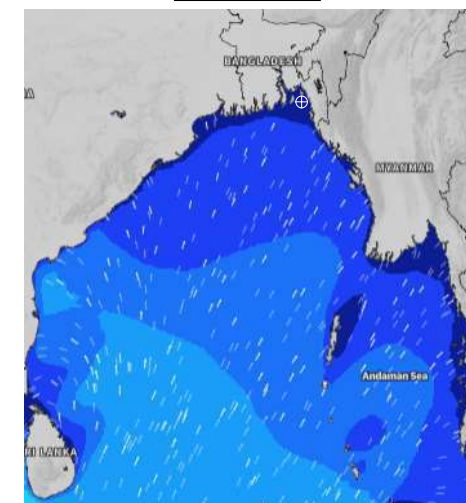
13 Oct 2024



14 Oct 2024



15 Oct 2024



Significant wave height (m)

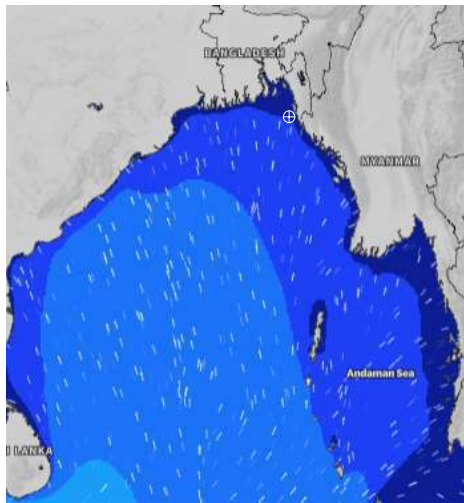


MARINE WEATHER FORECAST (08 to 15 Oct 2024) 20 NM WEST OF ELEPHANT POINT (21° 10' N, 091° 42' E)

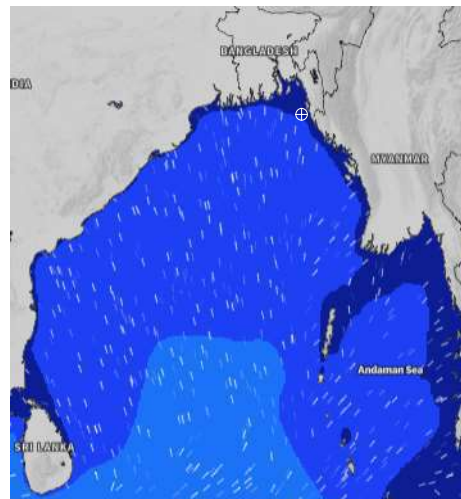


Date	Time	Air Temp (°C)		Sea Surface Temp (°C)	Baro Pressure (mbar)	Wind Direction	Wind Spd (kts)		Wave Ht (m)	Sea State	Humidity (%)	Prob of Rain
		Max	Min				Max	Avg				
08-10-24 (Tuesday)	0001	32	26	28	1012	NNW	5	4	0.6	3	90	10% (0.0 mm)
	0600			28	1013	NNE	9	8	0.6	3	93	11% (0.0 mm)
	1200			28	1013	NNW	7	6	0.6	3	69	12% (0.0 mm)
	1800			29	1010	NW	9	8	0.6	3	81	10% (0.0 mm)
09-10-24 (Wednesday)	0001	31	25	29	1011	NW	7	6	0.6	3	89	10% (0.0 mm)
	0600			28	1011	N	6	5	0.6	3	93	10% (0.0 mm)
	1200			29	1011	WNW	7	6	0.5	2	74	38% (0.2 mm)
	1800			29	1009	WNW	9	8	0.5	2	84	11% (0.0 mm)
10-10-24 (Thursday)	0001	31	25	29	1009	WNW	5	4	0.5	2	90	34% (0.2 mm)
	0600			28	1010	NW	5	4	0.5	2	94	41% (0.2 mm)
	1200			29	1010	W	6	5	0.4	2	77	43% (0.3 mm)
	1800			29	1007	W	9	8	0.5	2	84	10% (0.0 mm)
11-10-24 (Friday)	0001	31	25	28	1009	W	6	5	0.5	2	90	10% (0.0 mm)
	0600			28	1009	SW	3	2	0.5	2	92	13% (0.0 mm)
	1200			28	1010	WSW	6	5	0.5	2	74	20% (0.0 mm)
	1800			29	1008	W	7	6	0.6	3	82	10% (0.0 mm)

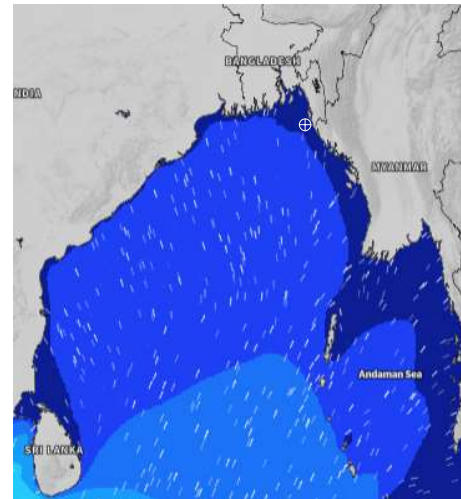
08 Oct 2024



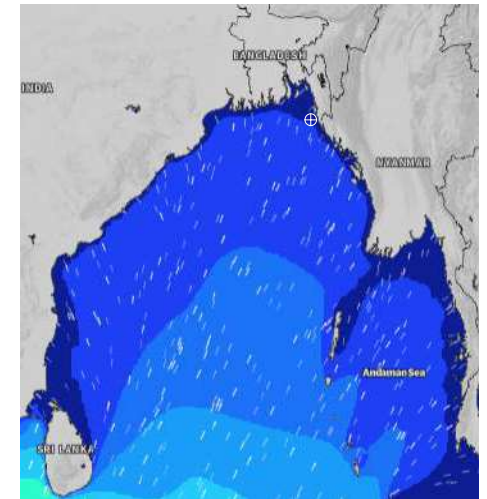
09 Oct 2024



10 Oct 2024



11 Oct 2024



Significant wave height (m)



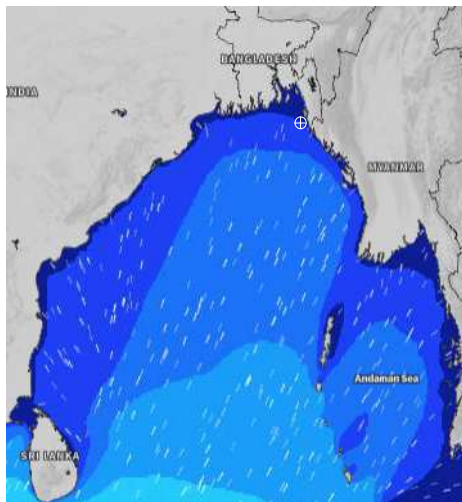
MARINE WEATHER FORECAST (08 to 15 Oct 2024)

20 NM WEST OF ELEPHANT POINT (21° 10' N, 091° 42' E)

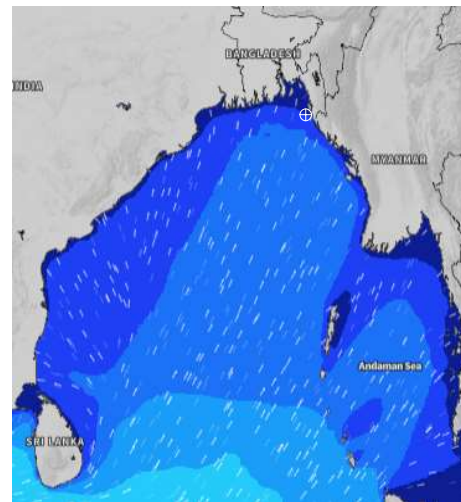


Date	Time	Air Temp (°C)		Sea Surface Temp (°C)	Baro Pressure (mbar)	Wind Direction	Wind Spd (kts)		Wave Ht (m)	Sea State	Humidity (%)	Prob of Rain
		Max	Min				Max	Avg				
12-10-24 (Saturday)	0001	31	25	28	1010	WNW	5	4	0.7	3	89	12% (0.0 mm)
	0600			28	1011	W	4	3	0.7	3	92	15% (0.0 mm)
	1200			28	1011	WNW	5	4	0.8	3	73	24% (0.0 mm)
	1800			28	1009	WNW	8	7	0.8	3	81	10% (0.0 mm)
13-10-24 (Sunday)	0001	32	25	28	1010	WNW	4	3	0.8	3	90	43% (0.4 mm)
	0600			27	1011	NE	5	4	0.8	3	93	34% (0.2 mm)
	1200			28	1011	WNW	9	8	0.9	3	74	43% (0.4 mm)
	1800			28	1008	NW	5	4	0.8	3	83	24% (0.0 mm)
14-10-24 (Monday)	0001	32	25	28	1010	WNW	5	4	0.9	3	91	64% (0.6 mm)
	0600			28	1010	NE	4	3	0.8	3	93	51% (0.5 mm)
	1200			28	1010	W	4	3	0.8	3	76	43% (0.4 mm)
	1800			29	1008	NW	9	8	0.8	3	85	28% (0.1 mm)
15-10-24 (Tuesday)	0001	32	25	29	1010	NNW	6	5	0.8	3	91	64% (0.6 mm)
	0600			28	1011	N	8	7	0.8	3	93	51% (0.5 mm)
	1200			29	1010	NW	9	8	0.8	3	76	43% (0.4 mm)
	1800			29	1008	NW	15	12	1.0	3	85	28% (0.1 mm)

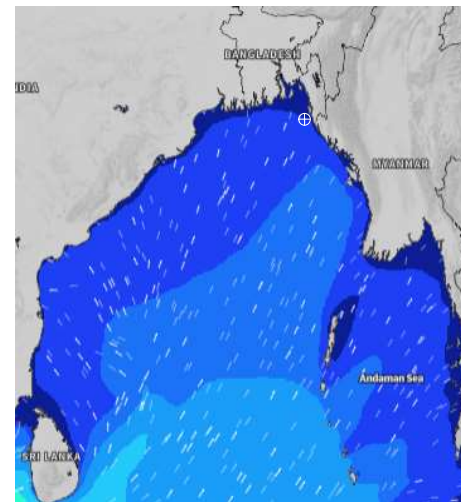
12 Oct 2024



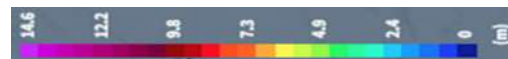
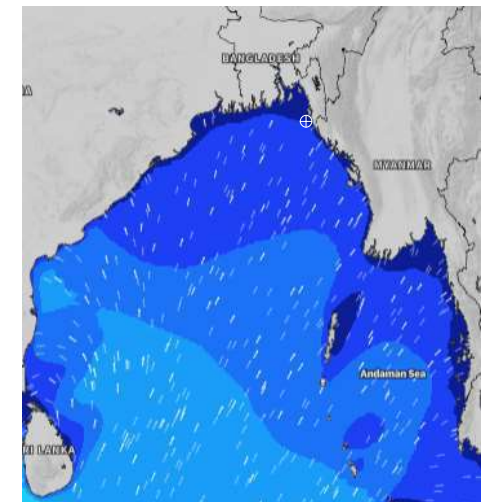
13 Oct 2024



14 Oct 2024



15 Oct 2024



Significant wave height (m)



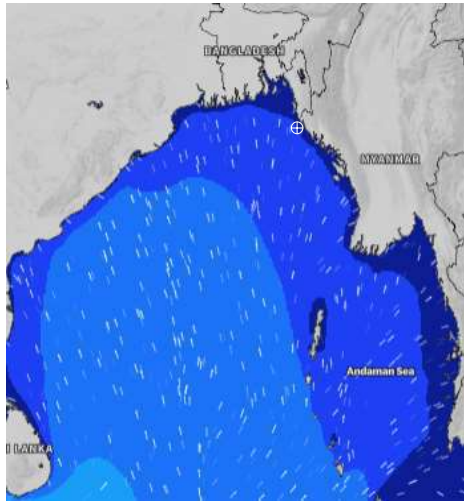
MARINE WEATHER FORECAST (08 to 15 Oct 2024)

15 NM WEST OF ST. MARTIN'S LIGHT HOUSE (20° 37' N, 092° 03' E)

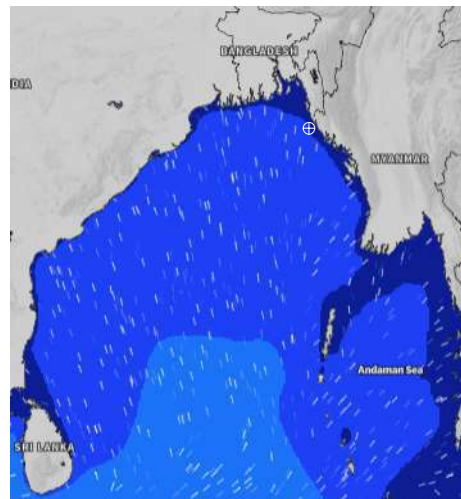


Date	Time	Air Temp (°C)		Sea Surface Temp (°C)	Baro Pressure (mbar)	Wind Direction	Wind Spd (kts)		Wave Ht (m)	Sea State	Humidity (%)	Prob of Rain
		Max	Min				Max	Avg				
08-10-24 (Tuesday)	0001	32	26	28	1013	NW	7	6	0.8	3	90	10% (0.0 mm)
	0600			28	1012	N	8	5	0.7	3	93	10% (0.0 mm)
	1200			28	1014	NNW	7	6	0.7	3	70	11% (0.0 mm)
	1800			29	1010	WNW	10	9	0.7	3	83	12% (0.0 mm)
09-10-24 (Wednesday)	0001	31	26	29	1011	NW	9	8	0.7	3	88	15% (0.0 mm)
	0600			28	1010	NNW	8	7	0.7	3	92	11% (0.0 mm)
	1200			29	1012	NW	7	6	0.7	3	73	31% (0.2 mm)
	1800			29	1008	WNW	10	9	0.7	3	83	10% (0.0 mm)
10-10-24 (Thursday)	0001	31	26	28	1010	NW	7	6	0.6	3	90	14% (0.0 mm)
	0600			28	1009	NW	7	6	0.6	3	93	10% (0.0 mm)
	1200			28	1011	WNW	7	6	0.6	3	76	21% (0.0 mm)
	1800			29	1008	WNW	8	7	0.6	3	83	10% (0.0 mm)
11-10-24 (Friday)	0001	31	26	28	1010	WNW	7	6	0.6	3	89	14% (0.0 mm)
	0600			28	1009	NW	5	4	0.6	3	92	22% (0.0 mm)
	1200			28	1011	WNW	6	5	0.7	3	73	14% (0.0 mm)
	1800			28	1008	WNW	8	7	0.8	3	83	16% (0.0 mm)

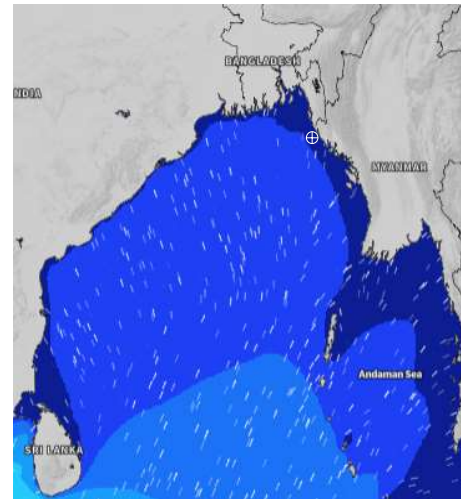
08 Oct 2024



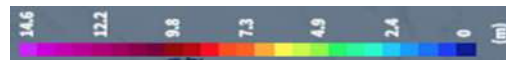
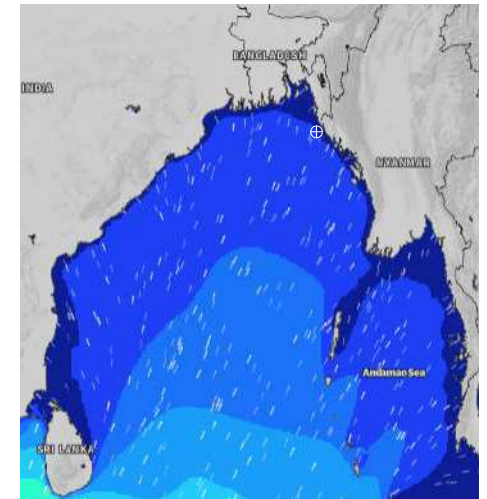
09 Oct 2024



10 Oct 2024



11 Oct 2024



Significant wave height (m)



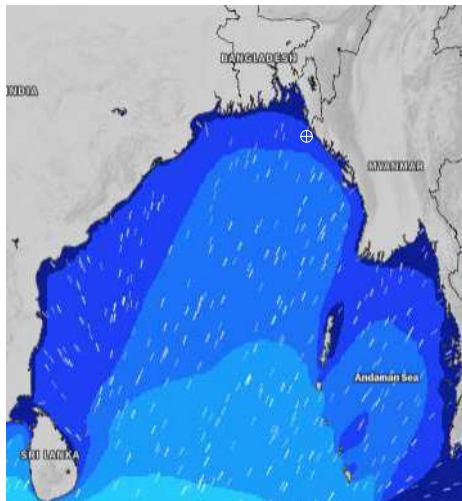
MARINE WEATHER FORECAST (08 to 15 Oct 2024)

15 NM WEST OF ST. MARTIN'S LIGHT HOUSE (20° 37' N, 092° 03' E)

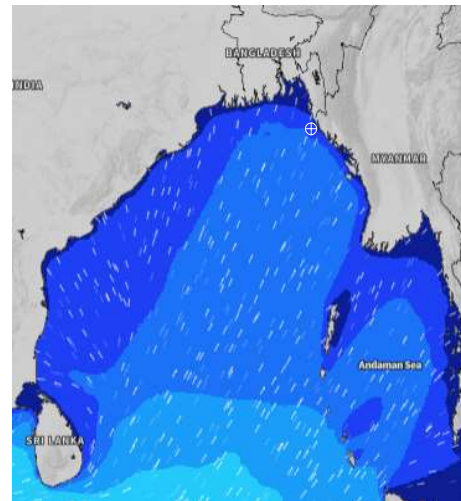


Date	Time	Air Temp (°C)		Sea Surface Temp (°C)	Baro Pressure (mbar)	Wind Direction	Wind Spd (kts)		Wave Ht (m)	Sea State	Humidity (%)	Prob of Rain
		Max	Min				Max	Avg				
12-10-24 (Saturday)	0001	31	26	28	1010	NW	7	6	0.9	3	88	21% (0.0 mm)
	0600			28	1010	WNW	6	5	0.9	3	92	24% (0.0 mm)
	1200			28	1012	NNW	5	4	1.0	3	72	22% (0.0 mm)
	1800			28	1008	WNW	9	8	1.1	3	82	16% (0.0 mm)
13-10-24 (Sunday)	0001	32	26	28	1010	WNW	10	9	1.1	3	90	18% (0.0 mm)
	0600			28	1009	NW	6	5	1.2	3	92	33% (0.2 mm)
	1200			28	1012	NNW	5	4	1.2	3	74	40% (0.3 mm)
	1800			28	1008	NW	10	9	1.2	3	83	12% (0.0 mm)
14-10-24 (Monday)	0001	32	26	28	1010	WNW	9	8	1.2	3	92	15% (0.0 mm)
	0600			28	1009	NW	7	6	1.2	3	93	37% (0.2 mm)
	1200			28	1012	NNW	4	3	1.1	3	76	43% (0.4 mm)
	1800			28	1008	WNW	9	8	1.1	3	86	19% (0.0 mm)
15-10-24 (Tuesday)	0001	31	26	29	1010	NW	9	8	1.1	3	92	15% (0.0 mm)
	0600			29	1009	NNW	9	8	1.0	3	93	37% (0.2 mm)
	1200			28	1012	N	9	8	1.0	3	74	33% (0.4 mm)
	1800			29	1008	NW	13	12	1.2	3	85	19% (0.0 mm)

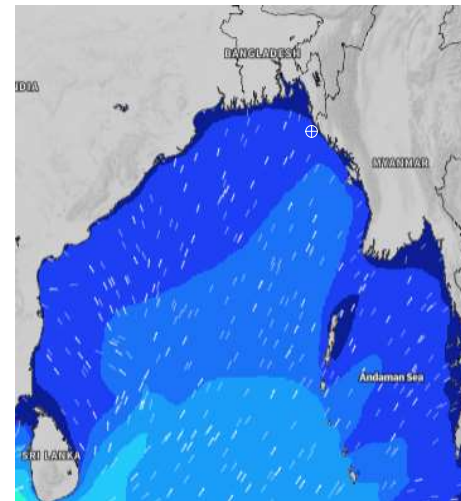
12 Oct 2024



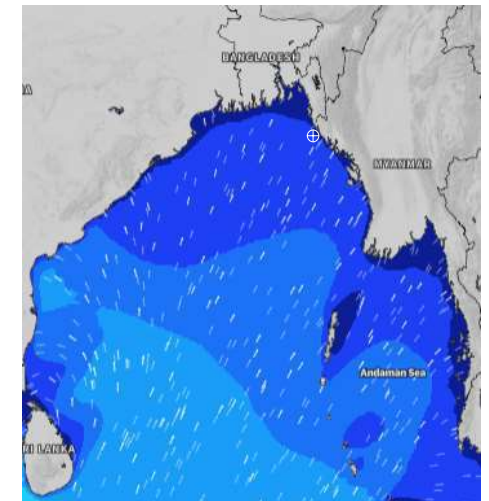
13 Oct 2024



14 Oct 2024



15 Oct 2024



Significant wave height (m)



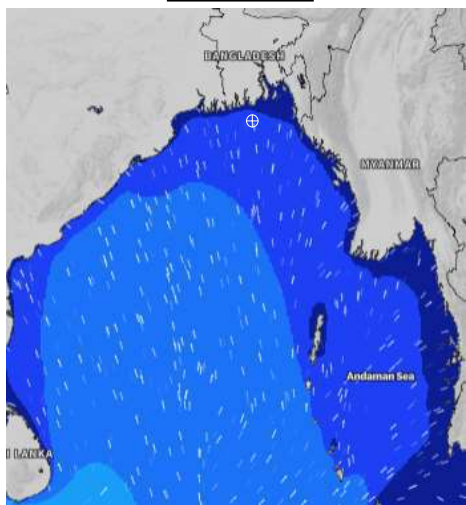
MARINE WEATHER FORECAST (08 to 15 Oct 2024)

40 NM ESE OF PAYRA FAIRWAY (21° 07' N, 090° 45' E)

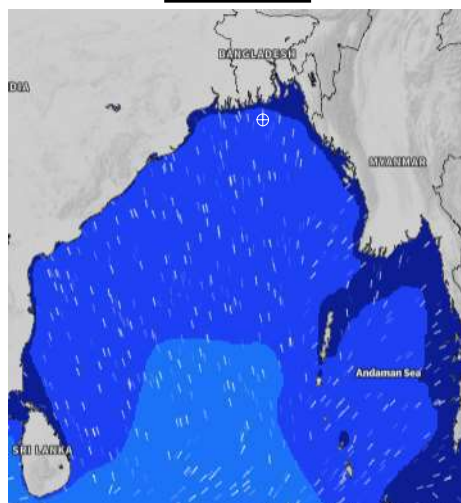


Date	Time	Air Temp (°C)		Sea Surface Temp (°C)	Baro Pressure (mbar)	Wind Direction	Wind Spd (kts)		Wave Ht (m)	Sea State	Humidity (%)	Prob of Rain
		Max	Min				Max	Avg				
08-10-24 (Tuesday)	0001	31	27	29	1013	WSW	4	3	0.9	3	90	24% (0.0 mm)
	0600			28	1013	NNE	5	4	0.8	3	94	24% (0.0 mm)
	1200			29	1013	WNW	3	2	0.8	3	73	49% (0.3 mm)
	1800			29	1010	W	6	5	0.8	3	82	10% (0.0 mm)
09-10-24 (Wednesday)	0001	31	27	29	1011	W	9	8	0.8	3	89	10% (0.0 mm)
	0600			29	1011	WNW	6	5	0.8	3	93	35% (0.2 mm)
	1200			29	1011	W	8	7	0.8	3	72	53% (0.4 mm)
	1800			29	1009	W	7	6	0.8	3	83	10% (0.0 mm)
10-10-24 (Thursday)	0001	31	27	29	1009	WSW	8	7	0.8	3	88	31% (0.2 mm)
	0600			28	1010	W	6	5	0.7	3	92	24% (0.0 mm)
	1200			29	1010	WSW	7	6	0.7	3	74	42% (0.3 mm)
	1800			29	1007	WSW	8	7	0.7	3	84	10% (0.0 mm)
11-10-24 (Friday)	0001	31	26	28	1009	W	8	7	0.7	3	88	21% (0.0 mm)
	0600			28	1009	WSW	6	5	0.7	3	91	30% (0.2 mm)
	1200			29	1010	WSW	7	6	0.8	3	73	24% (0.0 mm)
	1800			29	1008	W	8	7	0.8	3	83	16% (0.0 mm)

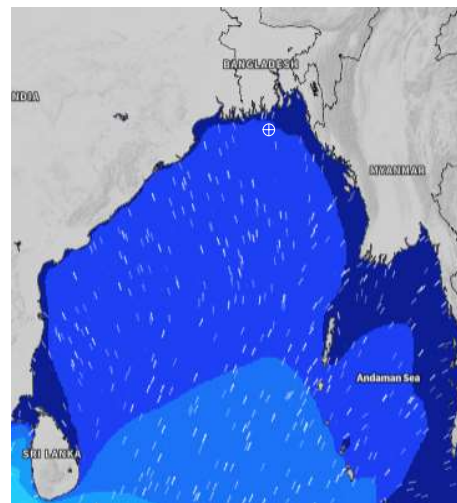
08 Oct 2024



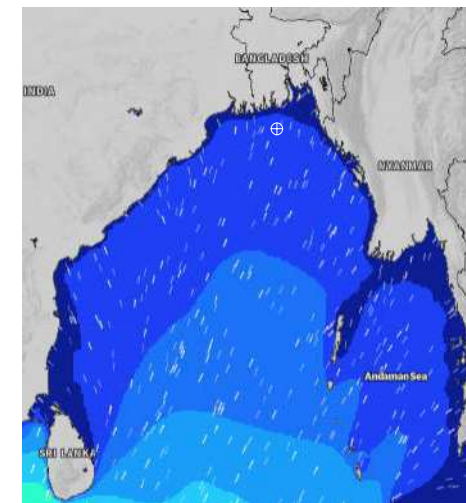
09 Oct 2024



10 Oct 2024



11 Oct 2024



Significant wave height (m)



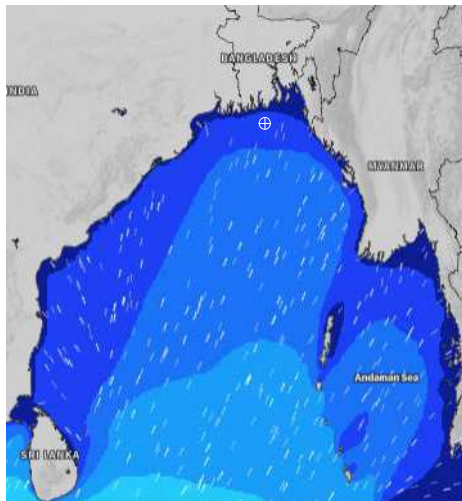
MARINE WEATHER FORECAST (08 to 15 Oct 2024)

40 NM ESE OF PAYRA FAIRWAY (21° 07' N, 090° 45' E)

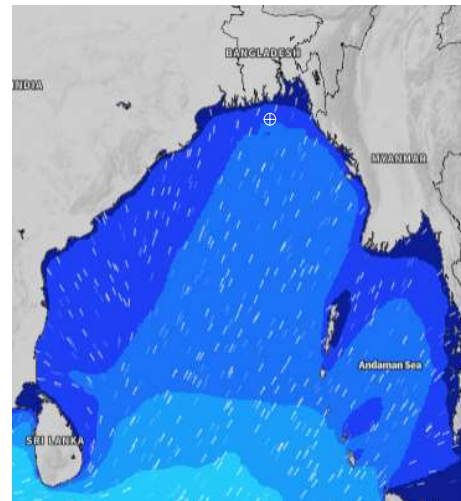


Date	Time	Air Temp (°C)		Sea Surface Temp (°C)	Baro Pressure (mbar)	Wind Direction	Wind Spd (kts)		Wave Ht (m)	Sea State	Humidity (%)	Prob of Rain
		Max	Min				Max	Avg				
12-10-24 (Saturday)	0001	31	26	28	1010	WSW	9	8	1.2	3	88	30% (0.2 mm)
	0600			28	1010	NW	6	5	1.2	3	91	36% (0.2 mm)
	1200			28	1011	NNW	5	4	1.1	3	74	47% (0.4 mm)
	1800			29	1009	NW	6	5	1.1	3	82	12% (0.0 mm)
13-10-24 (Sunday)	0001	31	26	28	1010	WNNW	7	6	1.0	3	88	23% (0.0 mm)
	0600			28	1011	N	8	7	1.0	3	92	36% (0.2 mm)
	1200			28	1011	N	6	5	1.0	3	76	54% (0.5 mm)
	1800			29	1008	NW	8	7	1.1	3	82	11% (0.0 mm)
14-10-24 (Monday)	0001	32	26	28	1010	WNW	9	8	1.1	3	89	34% (0.2 mm)
	0600			28	1010	NW	12	10	1.1	3	94	50% (0.5 mm)
	1200			29	1011	N	9	8	1.1	3	76	52% (0.5 mm)
	1800			29	1008	N	7	6	1.1	3	83	10% (0.0 mm)
15-10-24 (Tuesday)	0001	31	26	29	1010	W	7	6	1.0	3	89	34% (0.2 mm)
	0600			29	1011	NNW	7	6	1.0	3	94	50% (0.5 mm)
	1200			29	1011	N	6	5	1.0	3	76	52% (0.5 mm)
	1800			29	1008	NW	7	6	1.1	3	83	10% (0.0 mm)

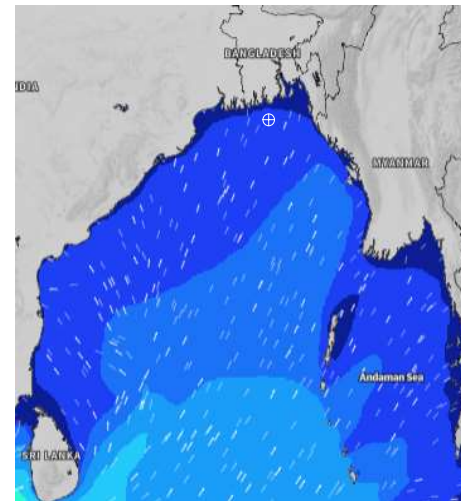
12 Oct 2024



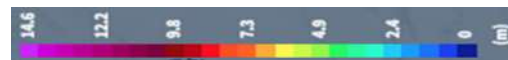
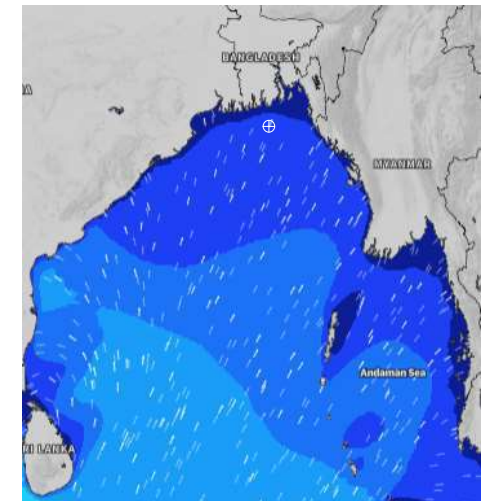
13 Oct 2024



14 Oct 2024



15 Oct 2024



Significant wave height (m)



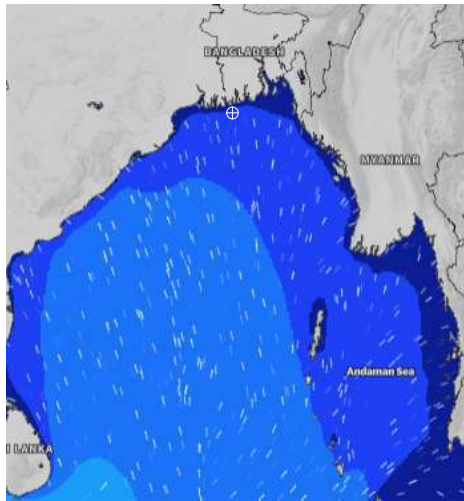
MARINE WEATHER FORECAST (08 to 15 Oct 2024)

10 NM SOUTH OF MONGLA FAIRWAY (21° 16' N, 089° 34' E)

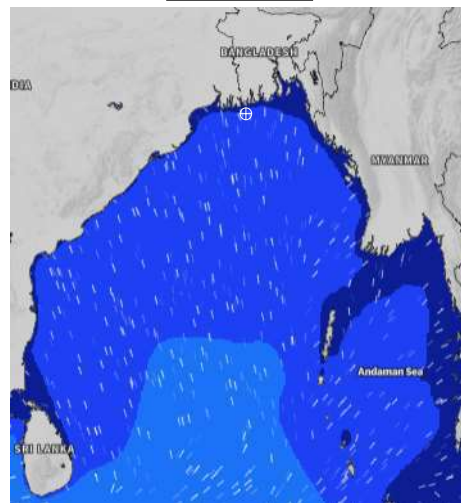


Date	Time	Air Temp (°C)		Sea Surface Temp (°C)	Baro Pressure (mbar)	Wind Direction	Wind Spd (kts)		Wave Ht (m)	Sea State	Humidity (%)	Prob of Rain
		Max	Min				Max	Avg				
08-10-24 (Tuesday)	0001	32	26	29	1013	SSW	7	6	0.9	3	93	32% (0.2 mm)
	0600			28	1012	SSW	3	2	0.9	3	96	42% (0.2 mm)
	1200			29	1013	SSW	4	3	1.0	3	70	48% (0.4 mm)
	1800			29	1010	SW	6	5	1.0	3	82	10% (0.0 mm)
09-10-24 (Wednesday)	0001	32	26	29	1011	WSW	8	7	1.0	3	93	10% (0.0 mm)
	0600			29	1011	W	8	7	1.0	3	96	36% (0.2 mm)
	1200			29	1011	WSW	8	7	1.0	3	69	51% (0.4 mm)
	1800			29	1008	WSW	8	7	1.0	3	84	10% (0.0 mm)
10-10-24 (Thursday)	0001	32	26	29	1009	WSW	9	8	0.9	3	92	38% (0.2 mm)
	0600			29	1009	WSW	9	8	0.9	3	95	42% (0.4 mm)
	1200			29	1010	WSW	9	8	0.8	3	73	66% (0.6 mm)
	1800			29	1008	WSW	9	8	0.8	3	85	14% (0.0 mm)
11-10-24 (Friday)	0001	32	26	29	1009	WSW	8	7	0.8	3	92	11% (0.0 mm)
	0600			29	1009	WSW	9	8	0.7	3	95	42% (0.4 mm)
	1200			29	1010	WSW	9	8	0.7	3	72	52% (0.6 mm)
	1800			29	1008	WSW	8	7	0.6	3	85	14% (0.0 mm)

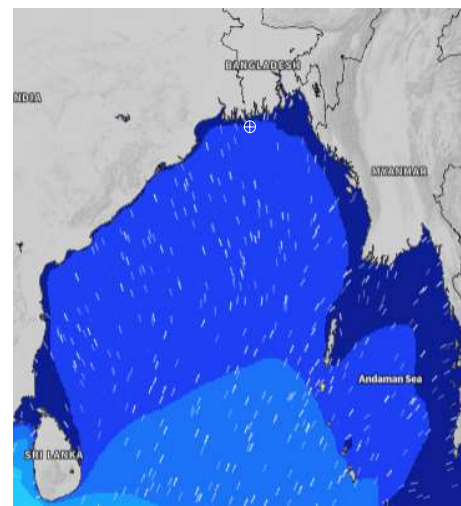
08 Oct 2024



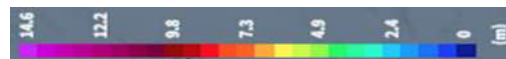
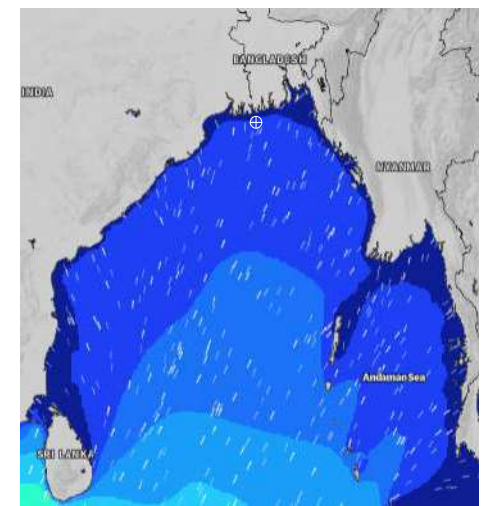
09 Oct 2024



10 Oct 2024



11 Oct 2024



Significant wave height (m)



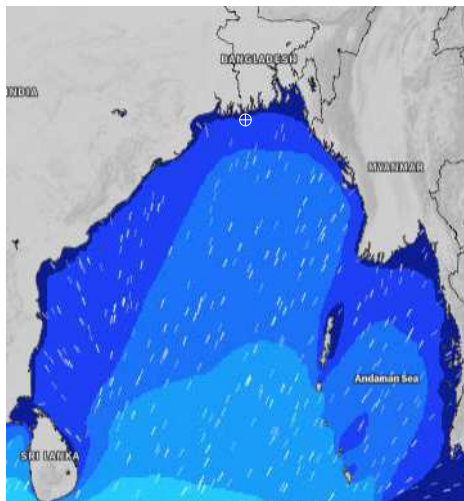
MARINE WEATHER FORECAST (08 to 15 Oct 2024)

10 NM SOUTH OF MONGLA FAIRWAY (21° 16' N, 089° 34' E)

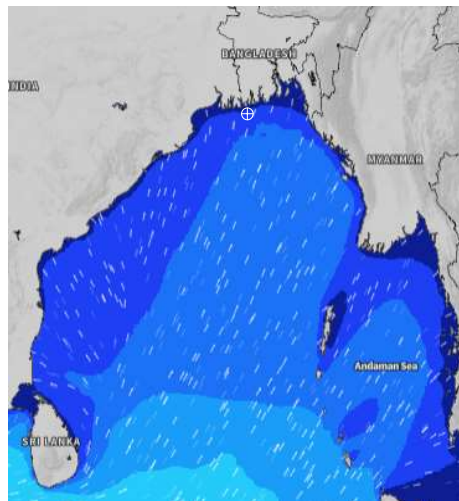


Date	Time	Air Temp (°C)		Sea Surface Temp (°C)	Baro Pressure (mbar)	Wind Direction	Wind Spd (kts)		Wave Ht (m)	Sea State	Humidity (%)	Prob of Rain
		Max	Min				Max	Avg				
12-10-24 (Saturday)	0001	32	26	28	1010	SW	9	8	0.8	3	92	24% (0.0 mm)
	0600			28	1010	SW	9	8	0.9	3	96	37% (0.2 mm)
	1200			29	1011	WSW	7	6	0.9	3	71	45% (0.4 mm)
	1800			29	1009	WSW	7	6	1.0	3	81	11% (0.0 mm)
13-10-24 (Sunday)	0001	33	25	29	1010	SSW	8	7	1.0	3	93	37% (0.2 mm)
	0600			28	1010	SW	9	8	1.0	3	94	50% (0.5 mm)
	1200			29	1010	WSW	7	6	1.0	3	72	58% (0.6 mm)
	1800			29	1008	SW	6	5	1.0	3	82	30% (0.2 mm)
14-10-24 (Monday)	0001	33	25	29	1010	WSW	8	7	1.0	3	92	30% (0.2 mm)
	0600			28	1010	WNW	6	5	1.0	3	94	24% (0.0 mm)
	1200			29	1011	N	5	4	0.9	3	76	32% (0.2 mm)
	1800			29	1009	WNW	6	5	0.9	3	84	18% (0.0 mm)
15-10-24 (Tuesday)	0001	32	25	29	1010	WSW	8	7	0.9	3	92	30% (0.2 mm)
	0600			29	1011	NW	7	6	0.9	3	94	24% (0.0 mm)
	1200			29	1011	NNW	7	6	0.9	3	76	32% (0.2 mm)
	1800			29	1009	W	7	6	1.0	3	83	18% (0.0 mm)

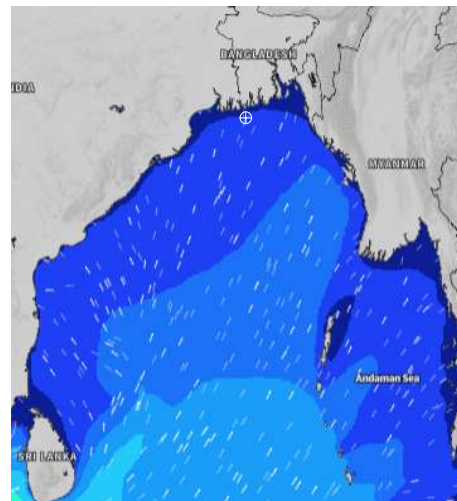
12 Oct 2024



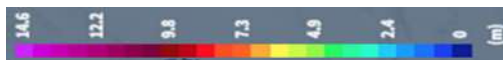
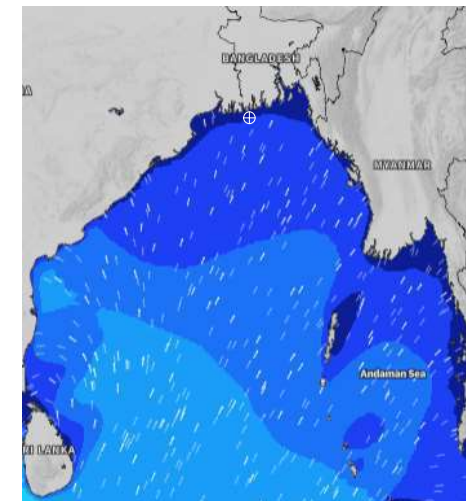
13 Oct 2024



14 Oct 2024



15 Oct 2024



Significant wave height (m)



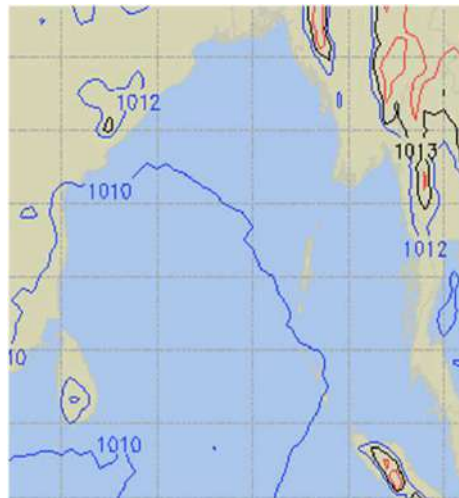
PREDICTED SURFACE PRESSURE FORECAST (08 to 14 Oct 2024)



08 Oct 2024



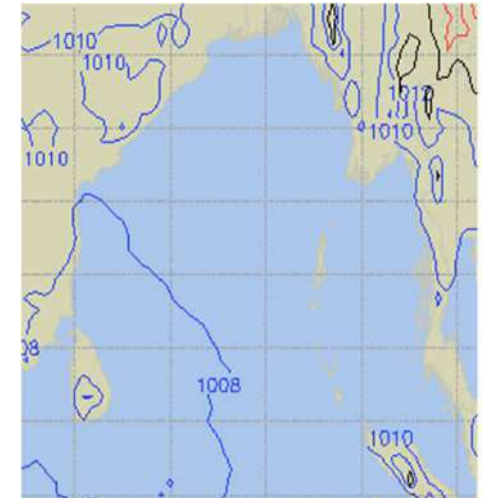
09 Oct 2024



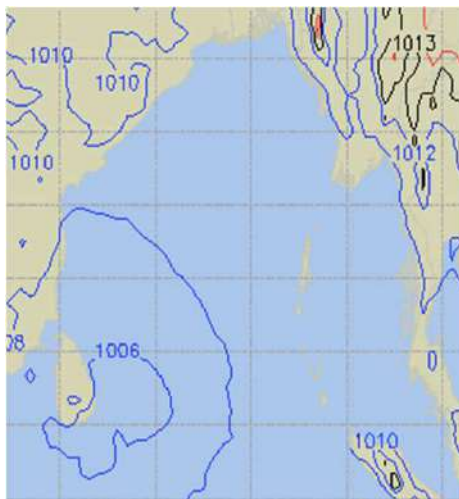
10 Oct 2024



11 Oct 2024



12 Oct 2024



13 Oct 2024



14 Oct 2024

