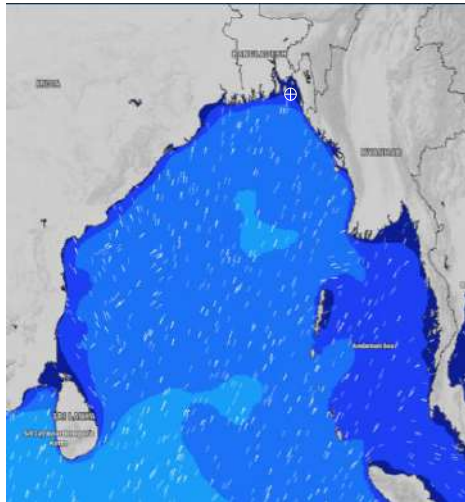


MARINE WEATHER FORECAST- NEAR AUTHORITY BUOY (Lat 22° 12' N, Long 091° 38' E)

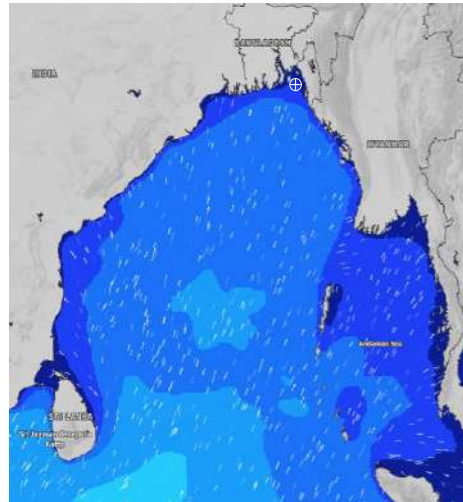
DATE : 08 to 15 July 2024

| Date | Time | Max Wind Spd (kts) | Wind Direction | Wave Ht (m) | Sea State | Baro Pressure | Air Temp | | Sea Surface Temp | Humidity (%) | Prb of Rain (%) | Sea State | Wave Ht (m) |
|----------|------|--------------------|----------------|-------------|-----------|---------------|----------|-----|------------------|--------------|-----------------|-----------|-------------|
| | | | | | | | Max | Min | | | | | |
| 08-07-24 | 0001 | 15 | SSE | 0.3 | 2 | 1005 | 32 | 27 | 28 | 91% | 50% (0.3 mm) | 0 | 0 |
| | 0600 | 10 | ESE | 0.2 | 2 | 1005 | | | 27 | 96% | 12% (0.0 mm) | 1 | 0 - 0.1 |
| | 1200 | 13 | WSW | 0.2 | 2 | 1004 | | | 29 | 74% | 24% (0.1 mm) | 2 | 0.1 - 0.5 |
| | 1800 | 16 | S | 0.3 | 2 | 1003 | | | 28 | 87% | 47% (0.4 mm) | 3 | 0.5 - 1.25 |
| 09-07-24 | 0001 | 17 | SE | 0.3 | 2 | 1005 | 30 | 26 | 28 | 91% | 40% (0.4 mm) | 4 | 1.25 - 2.5 |
| | 0600 | 18 | SSE | 0.3 | 2 | 1005 | | | 27 | 93% | 38% (0.3 mm) | 5 | 2.5 - 4.0 |
| | 1200 | 18 | S | 0.3 | 2 | 1005 | | | 29 | 83% | 58% (0.5 mm) | 6 | 4.0 - 6.0 |
| | 1800 | 16 | S | 0.3 | 2 | 1005 | | | 28 | 87% | 44% (0.3 mm) | 7 | 6.0 - 9.0 |
| 10-07-24 | 0001 | 17 | SSE | 0.3 | 2 | 1007 | 29 | 26 | 28 | 92% | 64% (0.6 mm) | 8 | 9.0 - 14.0 |
| | 0600 | 15 | SSE | 0.3 | 2 | 1007 | | | 27 | 95% | 71% (0.7 mm) | 9 | Over 14.0 |
| | 1200 | 14 | SSW | 0.3 | 2 | 1007 | | | 29 | 86% | 52% (0.4 mm) | | |
| | 1800 | 15 | SSW | 0.3 | 2 | 1006 | | | 28 | 89% | 51% (0.5 mm) | | |
| 11-07-24 | 0001 | 16 | SSE | 0.3 | 2 | 1007 | 28 | 26 | 28 | 92% | 73% (0.6 mm) | | |
| | 0600 | 17 | SSE | 0.3 | 2 | 1006 | | | 27 | 93% | 65% (0.5 mm) | | |
| | 1200 | 17 | S | 0.4 | 2 | 1006 | | | 28 | 86% | 60% (0.4 mm) | | |
| | 1800 | 22 | SSE | 0.5 | 2 | 1005 | | | 27 | 89% | 50% (0.5 mm) | | |

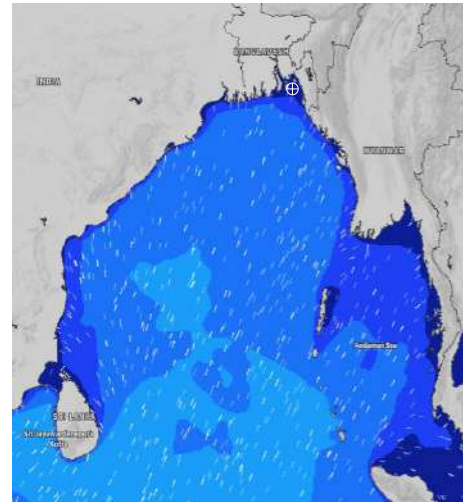
08 July 24 Mon (Probability 98%)



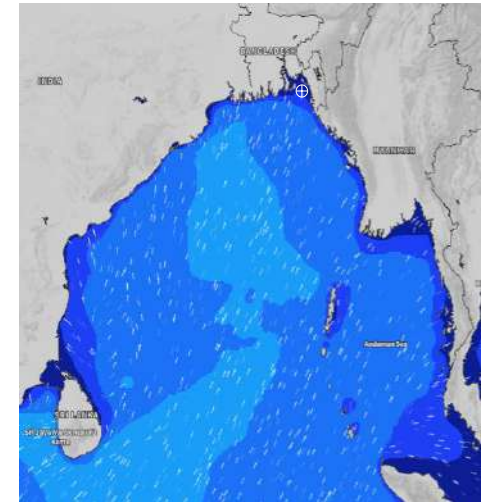
09 July 24 Tue (Probability 95%)



10 July 24 Wed (Probability 90%)



11 July 24 Thu (Probability 80%)



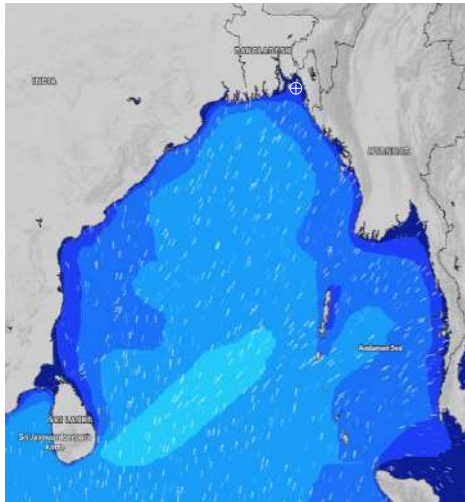
Significant wave height (m)

MARINE WEATHER FORECAST- NEAR AUTHORITY BUOY (Lat 22° 12' N, Long 091° 38' E)

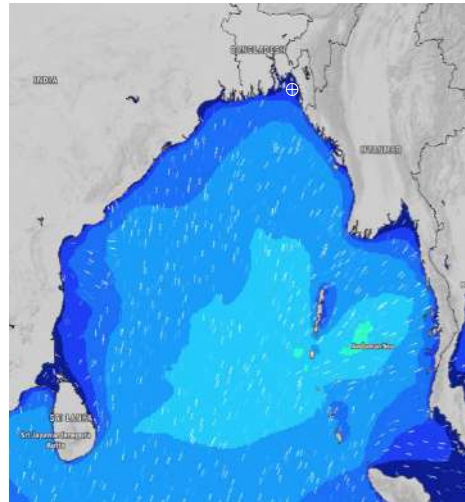
DATE : 08 to 15 July 2024

| Date | Time | Max Wind Spd (kts) | Wind Direction | Wave Ht (m) | Sea State | Baro Pressure | Air Temp | | Sea Surface Temp | Humidity (%) | Prob of Rain (%) | Sea State | Wave Ht (m) |
|----------|------|--------------------|----------------|-------------|-----------|---------------|----------|-----|------------------|--------------|------------------|-----------|-------------|
| | | | | | | | Max | Min | | | | | |
| 12-07-24 | 0001 | 21 | SSE | 0.4 | 2 | 1005 | 29 | 26 | 26 | 92% | 67% (0.6 mm) | 0 | 0 |
| | 0600 | 19 | SSE | 0.4 | 2 | 1005 | | | 26 | 93% | 52% (0.4 mm) | 1 | 0 - 0.1 |
| | 1200 | 19 | S | 0.4 | 2 | 1004 | | | 27 | 86% | 39% (0.2 mm) | 2 | 0.1 - 0.5 |
| | 1800 | 19 | S | 0.4 | 2 | 1002 | | | 28 | 88% | 29% (0.2 mm) | 3 | 0.5 - 1.25 |
| 13-07-24 | 0001 | 18 | SSE | 0.3 | 2 | 1003 | 31 | 27 | 27 | 90% | 55% (0.6 mm) | 4 | 1.25 - 2.5 |
| | 0600 | 17 | SSE | 0.3 | 2 | 1002 | | | 26 | 92% | 48% (0.4 mm) | 5 | 2.5 - 4.0 |
| | 1200 | 16 | SSW | 0.4 | 2 | 1001 | | | 28 | 89% | 34% (0.2 mm) | 6 | 4.0 - 6.0 |
| | 1800 | 17 | S | 0.3 | 2 | 999 | | | 28 | 90% | 33% (0.2 mm) | 7 | 6.0 - 9.0 |
| 14-07-24 | 0001 | 16 | SSE | 0.3 | 2 | 1001 | 32 | 27 | 27 | 90% | 62% (0.6 mm) | 8 | 9.0 - 14.0 |
| | 0600 | 13 | SE | 0.2 | 2 | 1001 | | | 27 | 92% | 55% (0.4 mm) | 9 | Over 14.0 |
| | 1200 | 8 | SW | 0.1 | 1 | 1000 | | | 28 | 89% | 34% (0.2 mm) | | |
| | 1800 | 10 | SW | 0.2 | 2 | 998 | | | 29 | 90% | 33% (0.2 mm) | | |
| 15-07-24 | 0001 | 8 | SSE | 0.1 | 1 | 1001 | 32 | 27 | 28 | 90% | 62% (0.6 mm) | | |
| | 0600 | 5 | E | 0.1 | 1 | 1001 | | | 27 | 92% | 55% (0.4 mm) | | |
| | 1200 | 8 | W | 0.1 | 1 | 1000 | | | 29 | 89% | 34% (0.2 mm) | | |
| | 1800 | 5 | WSW | 0.1 | 1 | 998 | | | 29 | 90% | 33% (0.2 mm) | | |

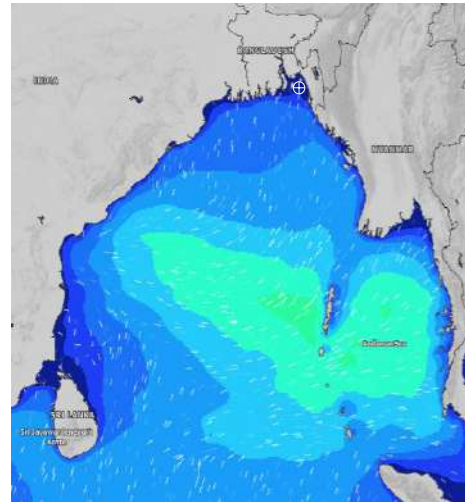
12 July 24 Fri (Probability 70%)



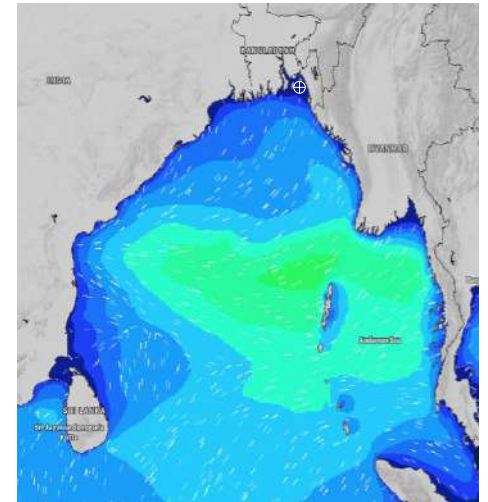
13 July 24 Sat (Probability 60%)



14 July 24 Sun (Probability 50%)



15 July 24 Mon (Probability 50%)



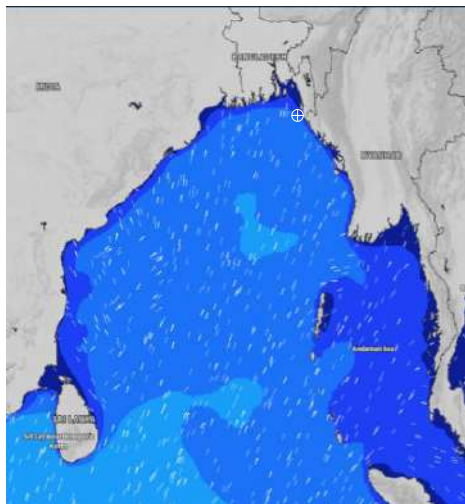
Significant wave height (m)

MARINE WEATHER FORECAST- 20 NM WEST OF ELEPHANT POINT (Lat 21° 10' N, Long 091° 42' E)

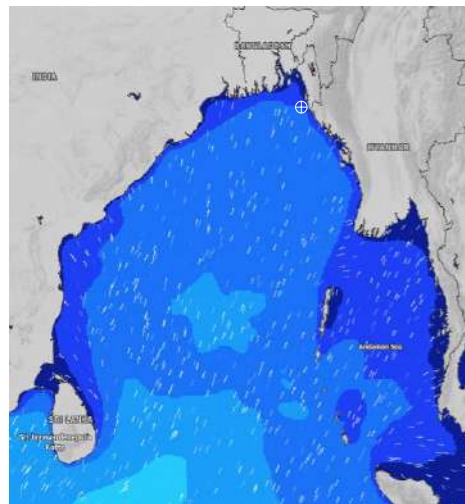
DATE : 08 to 15 July 2024

| Date | Time | Max Wind Spd (kts) | Wind Direction | Wave Ht (m) | Sea State | Baro Pressure | Air Temp | | Sea Surface Temp | Humidity (%) | Prob of Rain (%) | Sea State | Wave Ht (m) |
|----------|------|--------------------|----------------|-------------|-----------|---------------|----------|-----|------------------|--------------|------------------|-----------|-------------|
| | | | | | | | Max | Min | | | | | |
| 08-07-24 | 0001 | 14 | SSE | 1.3 | 4 | 1005 | 31 | 26 | 29 | 90% | 24% (0.0 mm) | 0 | 0 |
| | 0600 | 16 | SE | 1.3 | 4 | 1004 | | | 28 | 89% | 12% (0.0 mm) | 1 | 0 - 0.1 |
| | 1200 | 19 | SSE | 1.4 | 4 | 1004 | | | 29 | 78% | 53% (0.4 mm) | 2 | 0.1 - 0.5 |
| | 1800 | 16 | SSE | 1.3 | 4 | 1003 | | | 29 | 86% | 41% (0.3 mm) | 3 | 0.5 - 1.25 |
| 09-07-24 | 0001 | 13 | SSE | 1.2 | 3 | 1004 | 30 | 26 | 29 | 90% | 52% (0.3 mm) | 4 | 1.25 - 2.5 |
| | 0600 | 15 | SSE | 1.1 | 3 | 1005 | | | 29 | 92% | 55% (0.5 mm) | 5 | 2.5 - 4.0 |
| | 1200 | 15 | SSE | 1.2 | 3 | 1006 | | | 29 | 84% | 53% (0.4 mm) | 6 | 4.0 - 6.0 |
| | 1800 | 13 | S | 1.1 | 3 | 1005 | | | 29 | 87% | 47% (0.4 mm) | 7 | 6.0 - 9.0 |
| 10-07-24 | 0001 | 13 | S | 1.1 | 3 | 1007 | 29 | 26 | 29 | 92% | 65% (0.5 mm) | 8 | 9.0 - 14.0 |
| | 0600 | 11 | S | 1.1 | 3 | 1007 | | | 29 | 94% | 67% (0.6 mm) | 9 | Over 14.0 |
| | 1200 | 12 | S | 1.1 | 3 | 1007 | | | 29 | 88% | 62% (0.4 mm) | | |
| | 1800 | 12 | S | 1.1 | 3 | 1006 | | | 29 | 90% | 63% (0.5 mm) | | |
| 11-07-24 | 0001 | 13 | S | 1.1 | 3 | 1007 | 28 | 26 | 28 | 94% | 65% (0.5 mm) | | |
| | 0600 | 11 | S | 1.1 | 3 | 1006 | | | 28 | 93% | 67% (0.6 mm) | | |
| | 1200 | 15 | S | 1.2 | 3 | 1006 | | | 27 | 88% | 62% (0.4 mm) | | |
| | 1800 | 18 | S | 1.4 | 4 | 1005 | | | 27 | 89% | 70% (0.7 mm) | | |

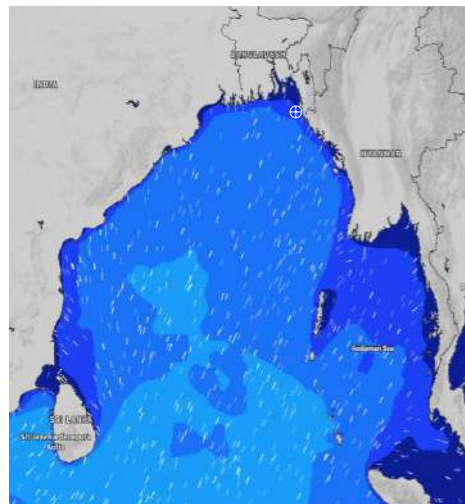
08 July 24 Mon (Probability 98%)



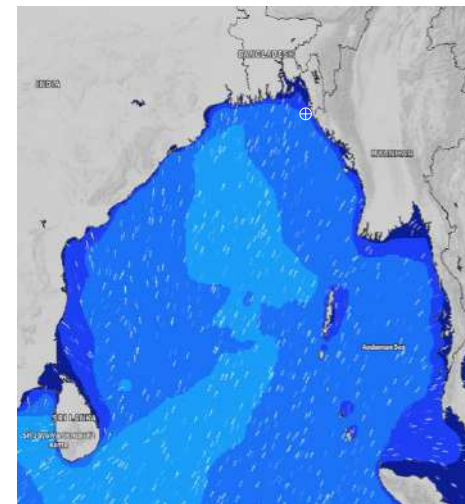
09 July 24 Tue (Probability 95%)



10 July 24 Wed (Probability 90%)



11 July 24 Thu (Probability 80%)



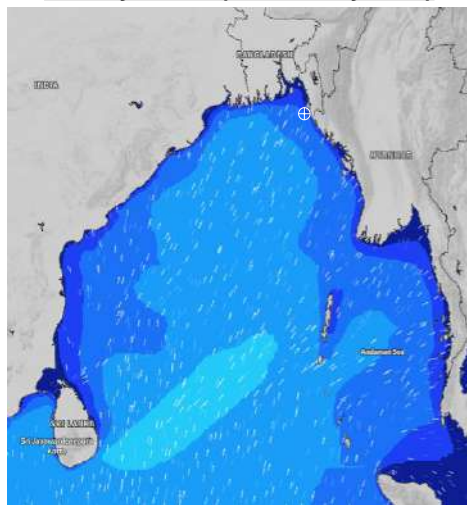
Significant wave height (m)

MARINE WEATHER FORECAST- 20 NM WEST OF ELEPHANT POINT (Lat 21° 10' N, Long 091° 42' E)

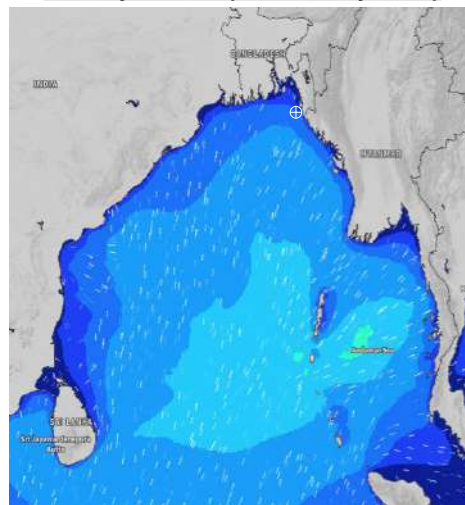
DATE : 08 to 15 July 2024

| Date | Time | Max Wind Spd (kts) | Wind Direction | Wave Ht (m) | Sea State | Baro Pressure | Air Temp | | Sea Surface Temp | Humidity (%) | Prob of Rain (%) | Sea State | Wave Ht (m) |
|----------|------|--------------------|----------------|-------------|-----------|---------------|----------|-----|------------------|--------------|------------------|-----------|-------------|
| | | | | | | | Max | Min | | | | | |
| 12-07-24 | 0001 | 17 | SSE | 1.4 | 4 | 1005 | 28 | 26 | 28 | 91% | 64% (0.3 mm) | 0 | 0 |
| | 0600 | 17 | SSE | 1.5 | 4 | 1005 | | | 27 | 93% | 56% (0.2 mm) | 1 | 0 - 0.1 |
| | 1200 | 19 | SSE | 1.6 | 4 | 1005 | | | 27 | 87% | 48% (0.4 mm) | 2 | 0.1 - 0.5 |
| | 1800 | 15 | SSE | 1.5 | 4 | 1002 | | | 28 | 88% | 32% (0.2 mm) | 3 | 0.5 - 1.25 |
| 13-07-24 | 0001 | 13 | SSE | 1.3 | 4 | 1003 | 30 | 26 | 28 | 91% | 66% (0.3 mm) | 4 | 1.25 - 2.5 |
| | 0600 | 15 | SE | 1.4 | 4 | 1002 | | | 28 | 93% | 59% (0.5 mm) | 5 | 2.5 - 4.0 |
| | 1200 | 16 | SSE | 1.5 | 4 | 1001 | | | 28 | 86% | 54% (0.4 mm) | 6 | 4.0 - 6.0 |
| | 1800 | 13 | S | 1.4 | 4 | 999 | | | 28 | 88% | 33% (0.2 mm) | 7 | 6.0 - 9.0 |
| 14-07-24 | 0001 | 13 | SSE | 1.4 | 4 | 1001 | 31 | 27 | 28 | 91% | 63% (0.3 mm) | 8 | 9.0 - 14.0 |
| | 0600 | 13 | SE | 1.4 | 4 | 1000 | | | 28 | 92% | 55% (0.5 mm) | 9 | Over 14.0 |
| | 1200 | 11 | SSE | 1.3 | 4 | 1000 | | | 28 | 85% | 54% (0.4 mm) | | |
| | 1800 | 12 | S | 1.3 | 4 | 998 | | | 29 | 87% | 33% (0.2 mm) | | |
| 15-07-24 | 0001 | 10 | SSE | 1.2 | 3 | 1001 | 31 | 26 | 29 | 91% | 63% (0.3 mm) | | |
| | 0600 | 7 | ESE | 1.3 | 4 | 1000 | | | 28 | 92% | 55% (0.5 mm) | | |
| | 1200 | 4 | SSW | 1.3 | 4 | 1000 | | | 29 | 85% | 54% (0.4 mm) | | |
| | 1800 | 5 | SW | 1.4 | 4 | 998 | | | 29 | 87% | 33% (0.2 mm) | | |

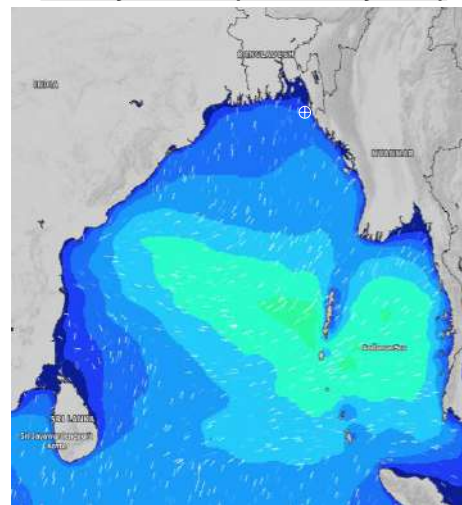
12 July 24 Fri (Probability 70%)



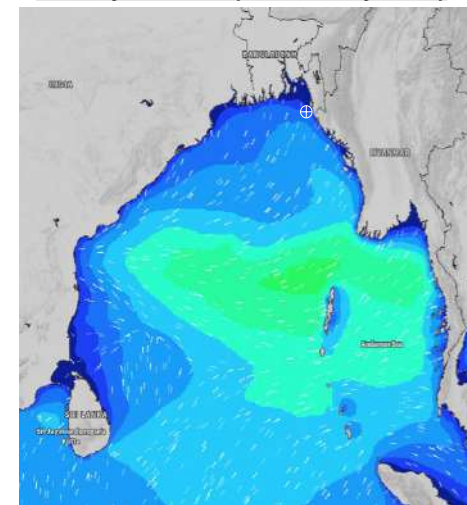
13 July 24 Sat (Probability 60%)



14 July 24 Sun (Probability 50%)



15 July 24 Mon (Probability 50%)



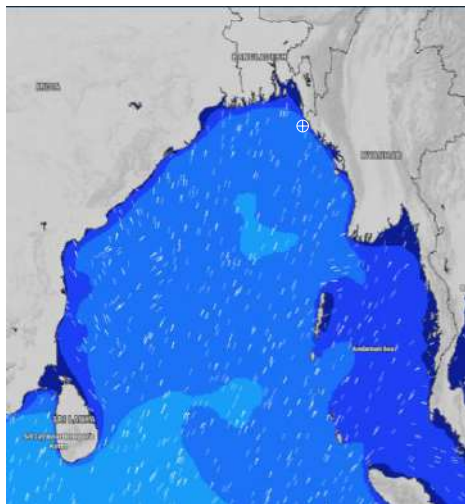
Significant wave height (m)

MARINE WEATHER FORECAST- 15 NM WEST OF ST. MARTIN'S LIGHT HOUSE (Lat 20° 37'N, Long 092° 03'E)

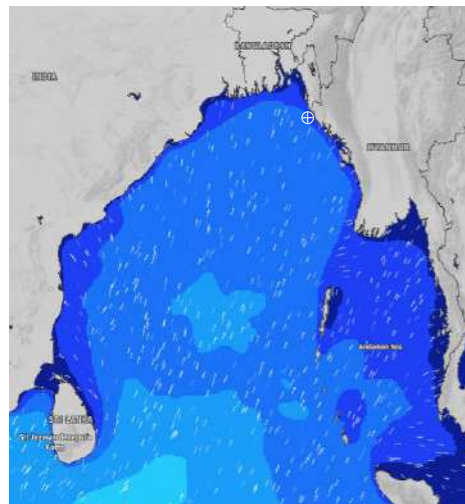
DATE : 08 to 15 July 2024

| Date | Time | Max Wind Spd (kts) | Wind Direction | Wave Ht (m) | Sea State | Baro Pressure | Air Temp | | Sea Surface Temp | Humidity (%) | Prob of Rain(%) | Sea State | Wave Ht (m) |
|----------|------|--------------------|----------------|-------------|-----------|---------------|----------|-----|------------------|--------------|-----------------|-----------|-------------|
| | | | | | | | Max | Min | | | | | |
| 08-07-24 | 0001 | 13 | SSE | 1.6 | 4 | 1005 | 30 | 26 | 29 | 90% | 24% (0.0 mm) | 0 | 0 |
| | 0600 | 15 | SE | 1.6 | 4 | 1004 | | | 29 | 90% | 12% (0.0 mm) | 1 | 0 - 0.1 |
| | 1200 | 16 | SE | 1.6 | 4 | 1005 | | | 29 | 84% | 42% (0.3 mm) | 2 | 0.1 - 0.5 |
| | 1800 | 15 | S | 1.5 | 4 | 1003 | | | 29 | 86% | 35% (0.2 mm) | 3 | 0.5 - 1.25 |
| 09-07-24 | 0001 | 13 | S | 1.4 | 4 | 1005 | 29 | 26 | 29 | 91% | 70% (0.7 mm) | 4 | 1.25 - 2.5 |
| | 0600 | 11 | S | 1.4 | 4 | 1004 | | | 28 | 92% | 49% (0.4 mm) | 5 | 2.5 - 4.0 |
| | 1200 | 13 | S | 1.4 | 4 | 1006 | | | 29 | 88% | 45% (0.3 mm) | 6 | 4.0 - 6.0 |
| | 1800 | 13 | SSW | 1.3 | 4 | 1005 | | | 29 | 90% | 56% (0.4 mm) | 7 | 6.0 - 9.0 |
| 10-07-24 | 0001 | 14 | SSW | 1.3 | 4 | 1008 | 29 | 26 | 29 | 91% | 66% (0.6 mm) | 8 | 9.0 - 14.0 |
| | 0600 | 11 | SSW | 1.3 | 4 | 1007 | | | 29 | 94% | 58% (0.4 mm) | 9 | Over 14.0 |
| | 1200 | 9 | SSW | 1.2 | 3 | 1008 | | | 28 | 89% | 65% (0.5 mm) | | |
| | 1800 | 11 | SSW | 1.3 | 4 | 1007 | | | 29 | 90% | 45% (0.4 mm) | | |
| 11-07-24 | 0001 | 9 | SSW | 1.3 | 4 | 1008 | 28 | 26 | 28 | 91% | 66% (0.6 mm) | | |
| | 0600 | 10 | SSW | 1.3 | 4 | 1006 | | | 27 | 93% | 58% (0.4 mm) | | |
| | 1200 | 14 | S | 1.4 | 4 | 1007 | | | 27 | 89% | 65% (0.5 mm) | | |
| | 1800 | 14 | S | 1.5 | 4 | 1006 | | | 27 | 90% | 45% (0.4 mm) | | |

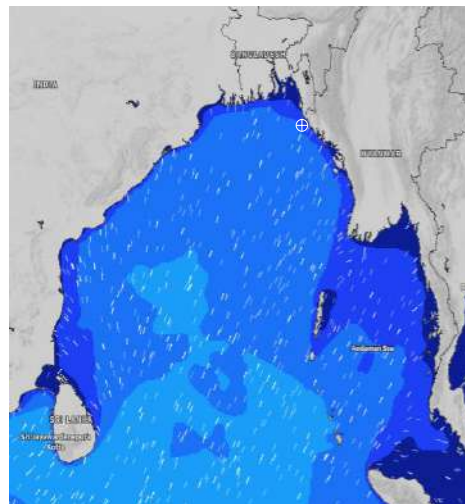
08 July 24 Mon (Probability 98%)



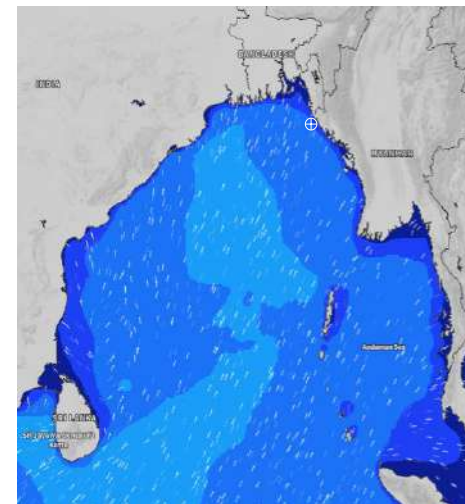
09 July 24 Tue (Probability 95%)



10 July 24 Wed (Probability 90%)



11 July 24 Thu (Probability 80%)



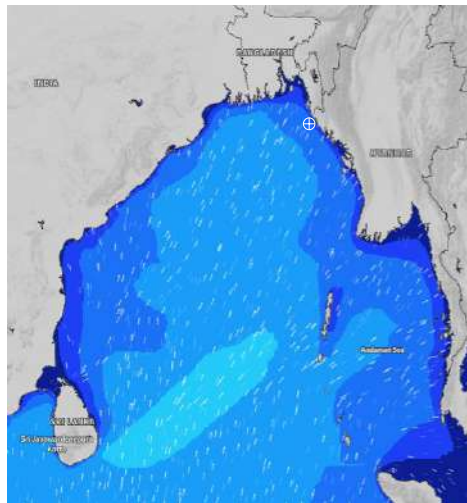
Significant wave height (m)

MARINE WEATHER FORECAST- 15 NM WEST OF ST. MARTIN'S LIGHT HOUSE (Lat 20° 37'N, Long 092° 03'E)

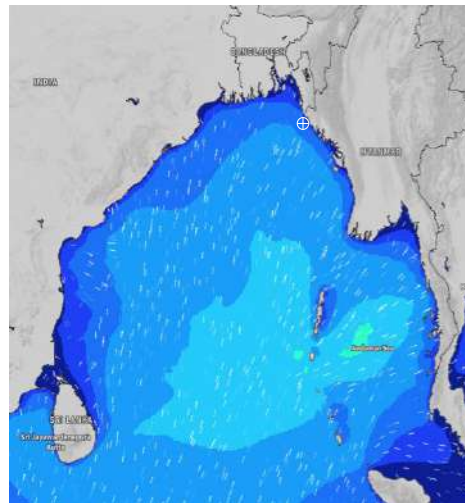
DATE : 08 to 15 July 2024

| Date | Time | Max Wind Spd (kts) | Wind Direction | Wave Ht (m) | Sea State | Baro Pressure | Air Temp | | Sea Surface Temp | Humidity (%) | Prob of Rain (%) | Sea State | Wave Ht (m) |
|----------|------|--------------------|----------------|-------------|-----------|---------------|----------|-----|------------------|--------------|------------------|-----------|-------------|
| | | | | | | | Max | Min | | | | | |
| 12-07-24 | 0001 | 14 | S | 1.6 | 4 | 1006 | 28 | 26 | 28 | 91% | 62% (0.4 mm) | 0 | 0 |
| | 0600 | 13 | S | 1.7 | 4 | 1004 | | | 28 | 93% | 60% (0.4 mm) | 1 | 0 - 0.1 |
| | 1200 | 16 | SSE | 1.7 | 4 | 1005 | | | 28 | 89% | 46% (0.2 mm) | 2 | 0.1 - 0.5 |
| | 1800 | 11 | S | 1.6 | 4 | 1003 | | | 28 | 90% | 35% (0.2 mm) | 3 | 0.5 - 1.25 |
| 13-07-24 | 0001 | 10 | SSW | 1.7 | 4 | 1004 | 29 | 26 | 28 | 90% | 64% (0.6 mm) | 4 | 1.25 - 2.5 |
| | 0600 | 9 | S | 1.7 | 4 | 1002 | | | 28 | 93% | 75% (0.7 mm) | 5 | 2.5 - 4.0 |
| | 1200 | 10 | SSE | 1.7 | 4 | 1002 | | | 28 | 88% | 43% (0.1 mm) | 6 | 4.0 - 6.0 |
| | 1800 | 10 | S | 1.8 | 4 | 999 | | | 28 | 89% | 34% (0.2 mm) | 7 | 6.0 - 9.0 |
| 14-07-24 | 0001 | 9 | SSE | 1.8 | 4 | 1001 | 30 | 27 | 29 | 90% | 64% (0.6 mm) | 8 | 9.0 - 14.0 |
| | 0600 | 10 | SSE | 1.7 | 4 | 1000 | | | 29 | 93% | 75% (0.7 mm) | 9 | Over 14.0 |
| | 1200 | 11 | SE | 1.7 | 4 | 1001 | | | 29 | 88% | 43% (0.1 mm) | | |
| | 1800 | 12 | SE | 1.7 | 4 | 1000 | | | 29 | 89% | 34% (0.2 mm) | | |
| 15-07-24 | 0001 | 10 | SSE | 1.6 | 4 | 1000 | 30 | 27 | 29 | 91% | 64% (0.6 mm) | | |
| | 0600 | 9 | SE | 1.7 | 4 | 999 | | | 29 | 94% | 75% (0.7 mm) | | |
| | 1200 | 11 | ESE | 1.8 | 4 | 1001 | | | 29 | 89% | 43% (0.1 mm) | | |
| | 1800 | 9 | S | 1.8 | 4 | 998 | | | 29 | 90% | 34% (0.2 mm) | | |

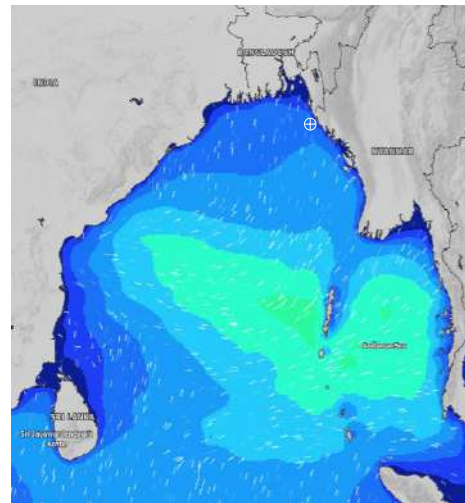
12 July 24 Fri (Probability 70%)



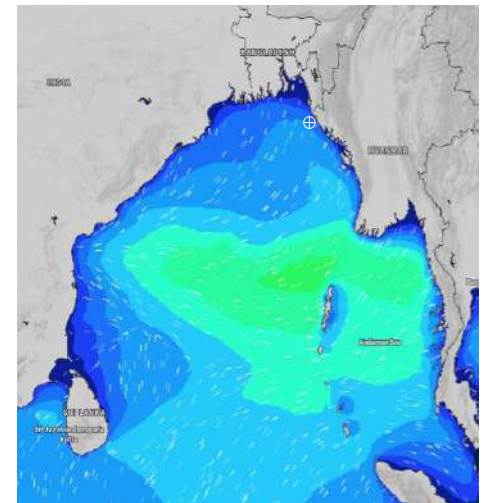
13 July 24 Sat (Probability 60%)



14 July 24 Sun (Probability 50%)



15 July 24 Mon (Probability 50%)



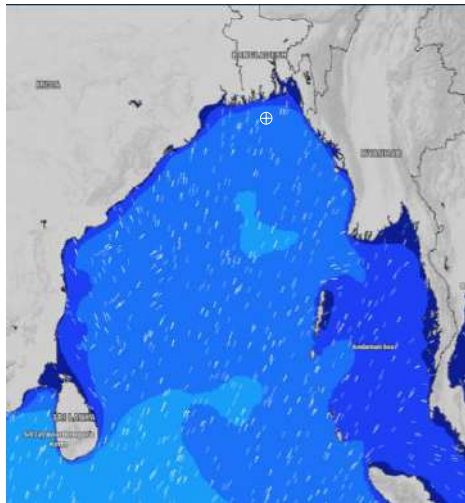
Significant wave height (m)

MARINE WEATHER FORECAST- 40 NM ESE OF PAYRA FAIRWAY (Lat 21° 07' N, Long 090° 45' E)

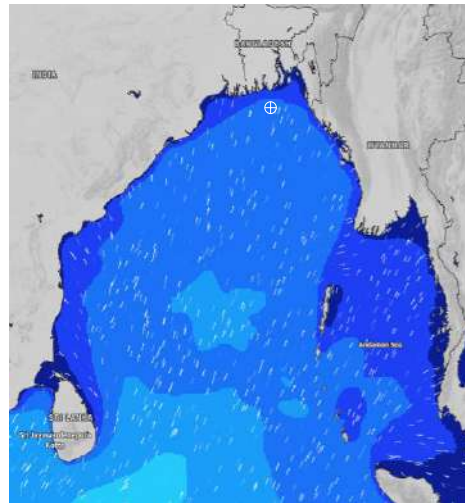
DATE : 08 to 15 July 2024

| Date | Time | Max Wind Spd (kts) | Wind Direction | Wave Ht (m) | Sea State | Baro Pressure | Air Temp | | Sea Surface Temp | Humidity (%) | Prob of Rain (%) | Sea State | Wave Ht (m) |
|----------|------|--------------------|----------------|-------------|-----------|---------------|----------|-----|------------------|--------------|------------------|-----------|-------------|
| | | | | | | | Max | Min | | | | | |
| 08-07-24 | 0001 | 13 | SSE | 1.6 | 4 | 1004 | 31 | 28 | 29 | 88% | 24% (0.0 mm) | 0 | 0 |
| | 0600 | 13 | SE | 1.6 | 4 | 1003 | | | 29 | 90% | 16% (0.0 mm) | 1 | 0 - 0.1 |
| | 1200 | 14 | SSE | 1.5 | 4 | 1004 | | | 29 | 80% | 18% (0.0 mm) | 2 | 0.1 - 0.5 |
| | 1800 | 12 | S | 1.5 | 4 | 1003 | | | 29 | 87% | 14% (0.0 mm) | 3 | 0.5 - 1.25 |
| 09-07-24 | 0001 | 14 | S | 1.4 | 4 | 1004 | 30 | 28 | 29 | 87% | 32% (0.2 mm) | 4 | 1.25 - 2.5 |
| | 0600 | 14 | SSW | 1.4 | 4 | 1004 | | | 29 | 90% | 45% (0.4 mm) | 5 | 2.5 - 4.0 |
| | 1200 | 15 | SSW | 1.4 | 4 | 1005 | | | 29 | 84% | 30% (0.2 mm) | 6 | 4.0 - 6.0 |
| | 1800 | 13 | SSW | 1.3 | 4 | 1005 | | | 29 | 87% | 22% (0.0 mm) | 7 | 6.0 - 9.0 |
| 10-07-24 | 0001 | 15 | SSW | 1.3 | 4 | 1006 | 30 | 28 | 29 | 88% | 24% (0.0 mm) | 8 | 9.0 - 14.0 |
| | 0600 | 12 | SSW | 1.3 | 4 | 1006 | | | 29 | 90% | 45% (0.4 mm) | 9 | Over 14.0 |
| | 1200 | 12 | SSW | 1.3 | 4 | 1007 | | | 29 | 84% | 36% (0.2 mm) | | |
| | 1800 | 12 | SSW | 1.3 | 4 | 1005 | | | 29 | 87% | 24% (0.1 mm) | | |
| 11-07-24 | 0001 | 14 | SSW | 1.4 | 4 | 1007 | 29 | 27 | 29 | 88% | 24% (0.0 mm) | | |
| | 0600 | 17 | SW | 1.6 | 4 | 1006 | | | 29 | 90% | 45% (0.4 mm) | | |
| | 1200 | 17 | SSW | 1.6 | 4 | 1005 | | | 28 | 84% | 40% (0.3 mm) | | |
| | 1800 | 19 | SSW | 1.7 | 4 | 1004 | | | 28 | 87% | 30% (0.2 mm) | | |

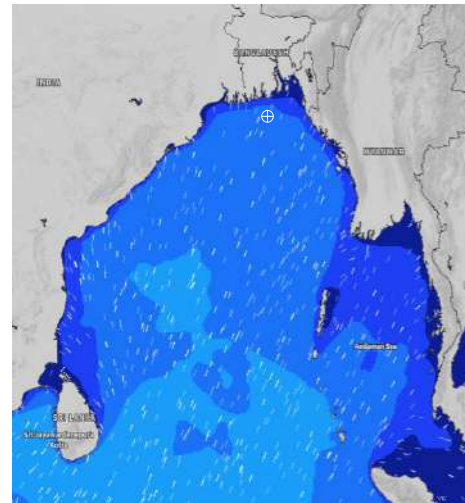
08 July 24 Mon (Probability 98%)



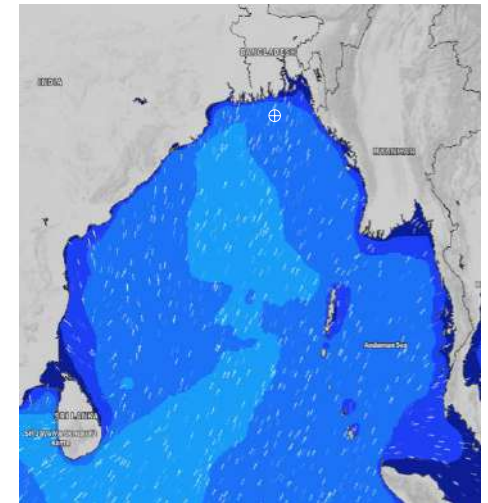
09 July 24 Tue (Probability 95%)



10 July 24 Wed (Probability 90%)



11 July 24 Thu (Probability 80%)



Significant wave height (m)

MARINE WEATHER FORECAST- 40 NM ESE OF PAYRA FAIRWAY (Lat 21° 07' N, Long 090° 45' E)

DATE : 08 to 15 July 2024

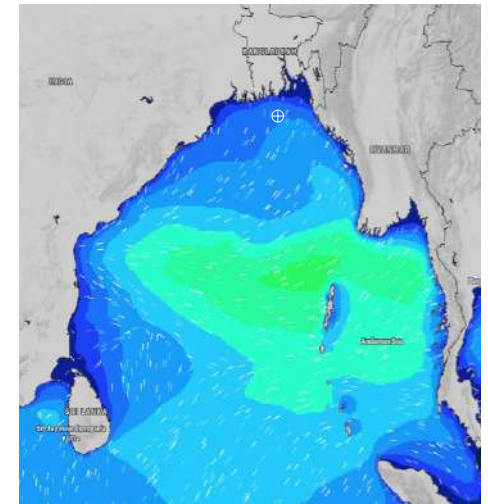
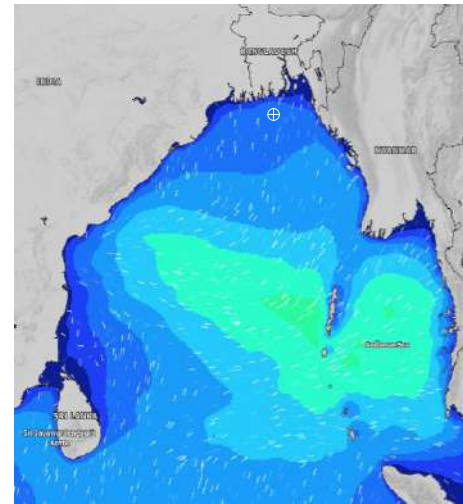
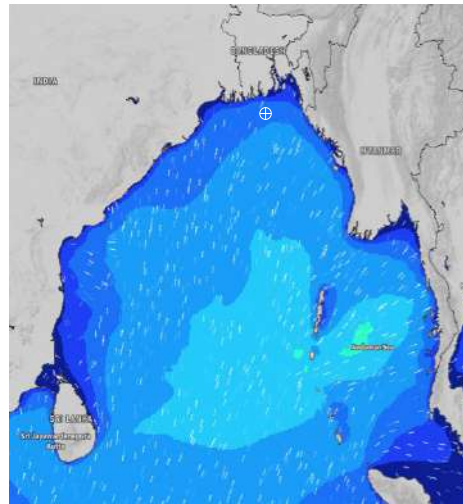
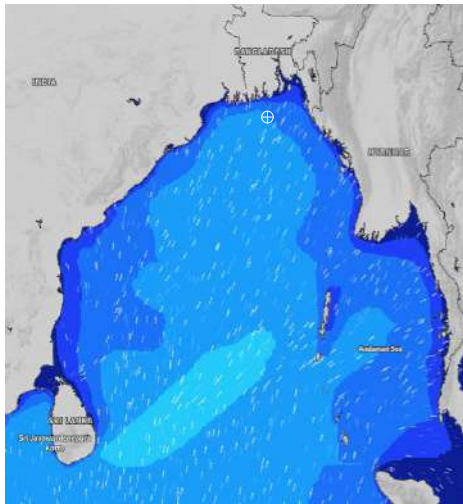
| Date | Time | Max Wind Spd (kts) | Wind Direction | Wave Ht (m) | Sea State | Baro Pressure | Air Temp | | Sea Surface Temp | Humidity (%) | Prob of Rain (%) | Sea State | Wave Ht (m) |
|----------|------|--------------------|----------------|-------------|-----------|---------------|----------|-----|------------------|--------------|------------------|-----------|-------------|
| | | | | | | | Max | Min | | | | | |
| 12-07-24 | 0001 | 19 | S | 1.9 | 4 | 1004 | 29 | 28 | 28 | 88% | 63% (0.2 mm) | 0 | 0 |
| | 0600 | 17 | S | 1.9 | 4 | 1003 | | | 28 | 90% | 48% (0.3 mm) | 1 | 0 - 0.1 |
| | 1200 | 14 | S | 1.8 | 4 | 1004 | | | 28 | 84% | 45% (0.4 mm) | 2 | 0.1 - 0.5 |
| | 1800 | 14 | S | 1.8 | 4 | 1002 | | | 28 | 87% | 32% (0.2 mm) | 3 | 0.5 - 1.25 |
| 13-07-24 | 0001 | 15 | SSW | 1.8 | 4 | 1002 | 30 | 28 | 29 | 88% | 61% (0.6 mm) | 4 | 1.25 - 2.5 |
| | 0600 | 11 | SSW | 1.8 | 4 | 1001 | | | 28 | 90% | 44% (0.4 mm) | 5 | 2.5 - 4.0 |
| | 1200 | 10 | S | 1.8 | 4 | 1000 | | | 29 | 86% | 43% (0.4 mm) | 6 | 4.0 - 6.0 |
| | 1800 | 9 | SSW | 1.8 | 4 | 999 | | | 29 | 88% | 24% (0.1 mm) | 7 | 6.0 - 9.0 |
| 14-07-24 | 0001 | 12 | S | 1.7 | 4 | 1000 | 30 | 28 | 28 | 90% | 61% (0.6 mm) | 8 | 9.0 - 14.0 |
| | 0600 | 8 | SSE | 1.7 | 4 | 1000 | | | 29 | 90% | 44% (0.4 mm) | 9 | Over 14.0 |
| | 1200 | 8 | SSE | 1.6 | 4 | 1000 | | | 29 | 85% | 43% (0.4 mm) | | |
| | 1800 | 9 | SSE | 1.6 | 4 | 998 | | | 29 | 87% | 24% (0.1 mm) | | |
| 15-07-24 | 0001 | 9 | SSE | 1.6 | 4 | 1000 | 30 | 28 | 29 | 90% | 61% (0.6 mm) | | |
| | 0600 | 9 | ESE | 1.7 | 4 | 1000 | | | 29 | 90% | 44% (0.4 mm) | | |
| | 1200 | 10 | ESE | 1.8 | 4 | 1000 | | | 29 | 85% | 43% (0.4 mm) | | |
| | 1800 | 8 | SSE | 1.8 | 4 | 998 | | | 29 | 87% | 24% (0.1 mm) | | |

12 July 24 Fri (Probability 70%)

13 July 24 Sat (Probability 60%)

14 July 24 Sun (Probability 50%)

15 July 24 Mon (Probability 50%)



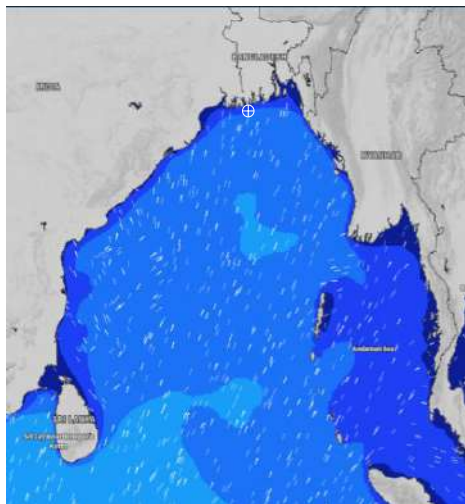
Significant wave height (m)

MARINE WEATHER FORECAST- 10 NM SOUTH OF MONGLA FAIRWAY (Lat 21° 16' N, Long 089° 34' E)

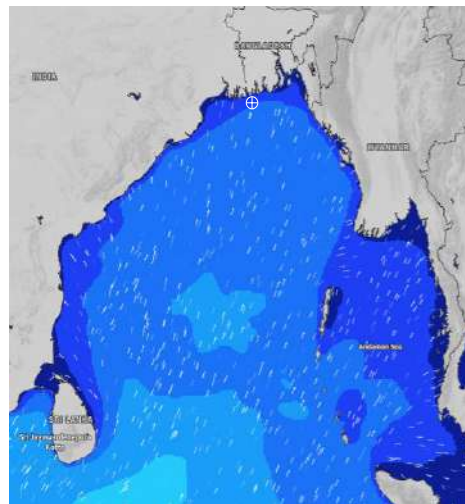
DATE : 08 to 15 July 2024

| Date | Time | Max Wind Spd (kts) | Wind Direction | Wave Ht (m) | Sea State | Baro Pressure | Air Temp | | Sea Surface Temp | Humidity (%) | Prob of Rain (%) | Sea State | Wave Ht (m) |
|----------|------|--------------------|----------------|-------------|-----------|---------------|----------|-----|------------------|--------------|------------------|-----------|-------------|
| | | | | | | | Max | Min | | | | | |
| 08-07-24 | 0001 | 13 | SSE | 1.6 | 4 | 1004 | 32 | 27 | 29 | 91% | 20% (0.0 mm) | 0 | 0 |
| | 0600 | 14 | SE | 1.5 | 4 | 1003 | | | 29 | 93% | 17% (0.0 mm) | 1 | 0 - 0.1 |
| | 1200 | 12 | SSE | 1.4 | 4 | 1004 | | | 29 | 76% | 20% (0.0 mm) | 2 | 0.1 - 0.5 |
| | 1800 | 11 | SSE | 1.4 | 4 | 1002 | | | 29 | 82% | 16% (0.0 mm) | 3 | 0.5 - 1.25 |
| 09-07-24 | 0001 | 11 | SSE | 1.3 | 4 | 1003 | 32 | 27 | 29 | 91% | 14% (0.0 mm) | 4 | 1.25 - 2.5 |
| | 0600 | 11 | SSW | 1.3 | 4 | 1003 | | | 29 | 93% | 31% (0.2 mm) | 5 | 2.5 - 4.0 |
| | 1200 | 15 | SSW | 1.3 | 4 | 1005 | | | 29 | 79% | 52% (0.4 mm) | 6 | 4.0 - 6.0 |
| | 1800 | 15 | SSW | 1.3 | 4 | 1004 | | | 29 | 83% | 12% (0.0 mm) | 7 | 6.0 - 9.0 |
| 10-07-24 | 0001 | 17 | SSW | 1.3 | 4 | 1006 | 31 | 28 | 29 | 90% | 21% (0.0 mm) | 8 | 9.0 - 14.0 |
| | 0600 | 14 | SSW | 1.4 | 4 | 1006 | | | 29 | 92% | 32% (0.2 mm) | 9 | Over 14.0 |
| | 1200 | 14 | SSW | 1.4 | 4 | 1006 | | | 29 | 80% | 67% (0.6 mm) | | |
| | 1800 | 13 | SW | 1.4 | 4 | 1005 | | | 29 | 86% | 16% (0.0 mm) | | |
| 11-07-24 | 0001 | 17 | SSW | 1.5 | 4 | 1006 | 31 | 27 | 29 | 90% | 21% (0.0 mm) | | |
| | 0600 | 21 | SSW | 1.7 | 4 | 1004 | | | 29 | 93% | 32% (0.2 mm) | | |
| | 1200 | 19 | SSW | 1.7 | 4 | 1005 | | | 29 | 81% | 72% (0.6 mm) | | |
| | 1800 | 21 | SSW | 1.8 | 4 | 1003 | | | 29 | 86% | 32% (0.2 mm) | | |

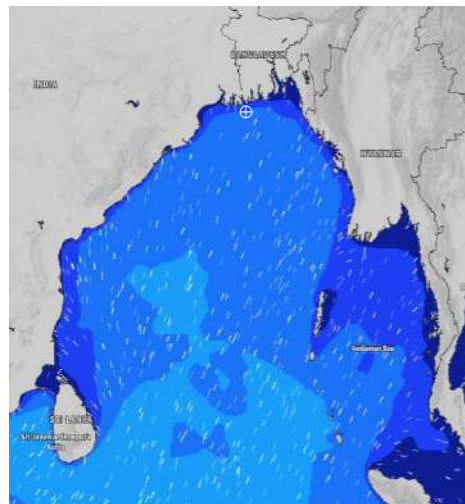
08 July 24 Mon (Probability 98%)



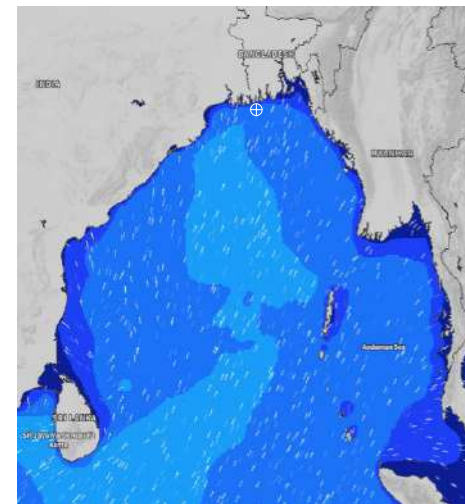
09 July 24 Tue (Probability 95%)



10 July 24 Wed (Probability 90%)



11 July 24 Thu (Probability 80%)



Significant wave height (m)

MARINE WEATHER FORECAST- 10 NM SOUTH OF MONGLA FAIRWAY (Lat 21° 16' N, Long 089° 34' E)

DATE : 08 to 15 July 2024

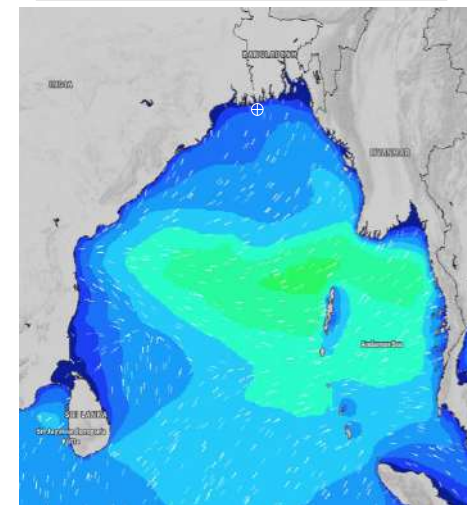
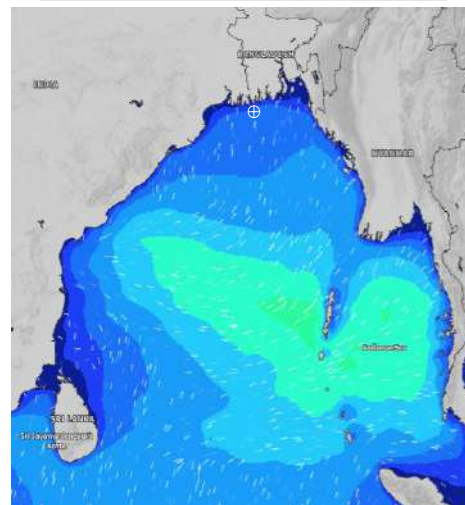
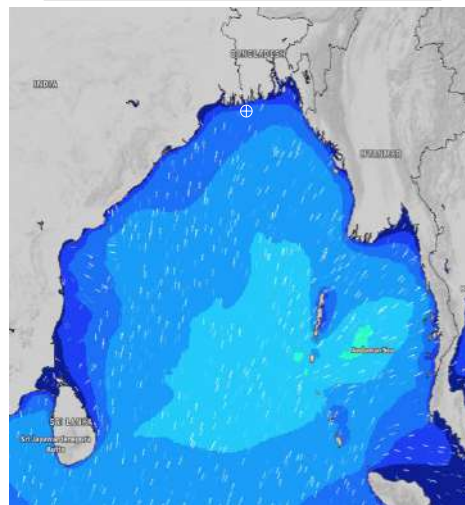
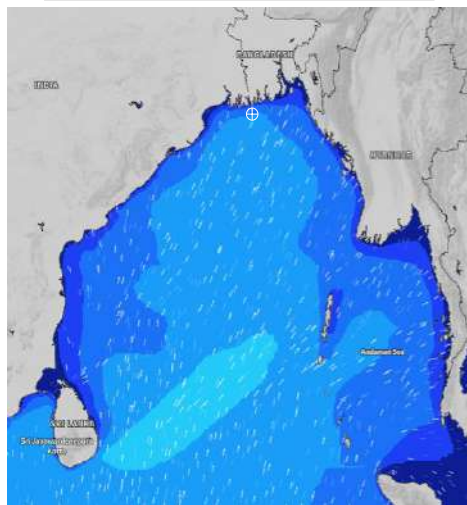
| Date | Time | Max Wind Spd (kts) | Wind Direction | Wave Ht (m) | Sea State | Baro Pressure | Air Temp | | Sea Surface Temp | Humidity (%) | Prob of Rain (%) | Sea State | Wave Ht (m) |
|----------|------|--------------------|----------------|-------------|-----------|---------------|----------|-----|------------------|--------------|------------------|-----------|-------------|
| | | | | | | | Max | Min | | | | | |
| 12-07-24 | 0001 | 20 | SSW | 1.9 | 4 | 1003 | 30 | 27 | 29 | 90% | 66% (0.7 mm) | 0 | 0 |
| | 0600 | 18 | SSW | 1.9 | 4 | 1002 | | | 29 | 93% | 63% (0.6 mm) | 1 | 0 - 0.1 |
| | 1200 | 18 | SSW | 1.9 | 4 | 1003 | | | 29 | 81% | 62% (0.5 mm) | 2 | 0.1 - 0.5 |
| | 1800 | 15 | SSW | 1.8 | 4 | 1001 | | | 29 | 86% | 61% (0.6 mm) | 3 | 0.5 - 1.25 |
| 13-07-24 | 0001 | 17 | SSW | 1.8 | 4 | 1001 | 32 | 27 | 29 | 91% | 61% (0.7 mm) | 4 | 1.25 - 2.5 |
| | 0600 | 9 | SW | 1.7 | 4 | 1000 | | | 29 | 93% | 40% (0.4 mm) | 5 | 2.5 - 4.0 |
| | 1200 | 9 | SW | 1.7 | 4 | 1000 | | | 30 | 82% | 62% (0.5 mm) | 6 | 4.0 - 6.0 |
| | 1800 | 12 | SSW | 1.6 | 4 | 998 | | | 30 | 86% | 61% (0.6 mm) | 7 | 6.0 - 9.0 |
| 14-07-24 | 0001 | 13 | S | 1.6 | 4 | 1000 | 32 | 27 | 29 | 91% | 61% (0.7 mm) | 8 | 9.0 - 14.0 |
| | 0600 | 8 | SSW | 1.6 | 4 | 999 | | | 29 | 93% | 40% (0.4 mm) | 9 | Over 14.0 |
| | 1200 | 7 | SSE | 1.5 | 4 | 1000 | | | 29 | 81% | 62% (0.5 mm) | | |
| | 1800 | 9 | SSE | 1.5 | 4 | 998 | | | 29 | 86% | 61% (0.6 mm) | | |
| 15-07-24 | 0001 | 9 | SSE | 1.5 | 4 | 1000 | 32 | 28 | 29 | 91% | 61% (0.7 mm) | | |
| | 0600 | 8 | ESE | 1.6 | 4 | 1000 | | | 29 | 93% | 40% (0.4 mm) | | |
| | 1200 | 10 | ESE | 1.6 | 4 | 1000 | | | 29 | 82% | 62% (0.5 mm) | | |
| | 1800 | 12 | SE | 1.6 | 4 | 998 | | | 29 | 86% | 61% (0.6 mm) | | |

12 July 24 Fri (Probability 70%)

13 July 24 Sat (Probability 60%)

14 July 24 Sun (Probability 50%)

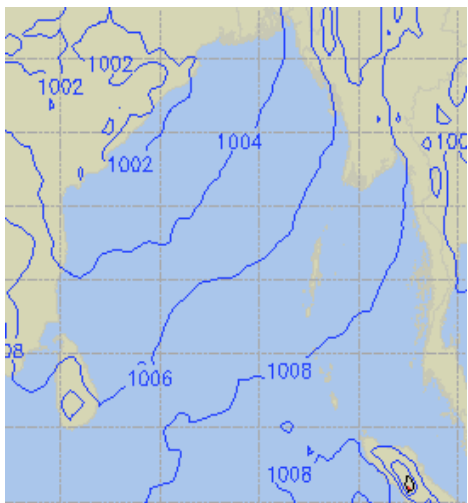
15 July 24 Mon (Probability 50%)



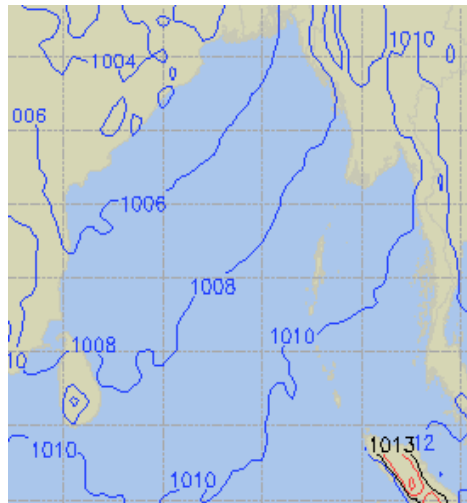
Significant wave height (m)

PREDICTED SURFACE PRESSURE FORECAST (08 to 14 July 2024)

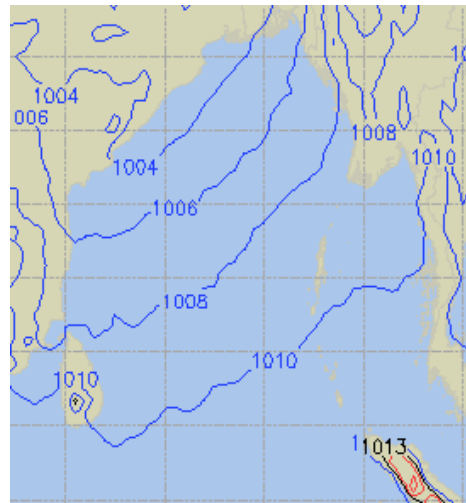
08 July 24 Mon (Probability 98%)



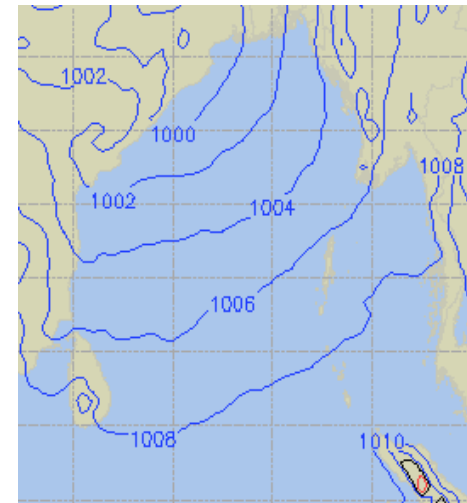
09 July 24 Tue (Probability 95%)



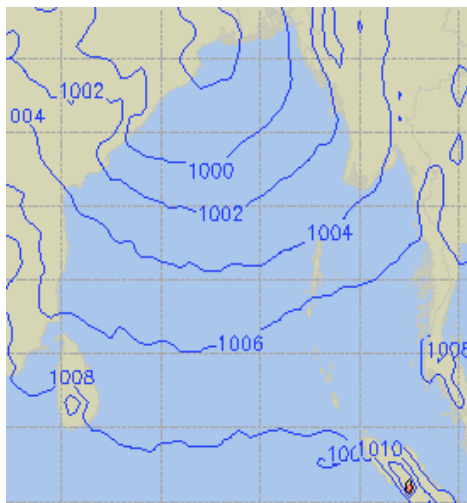
10 July 24 Wed (Probability 90%)



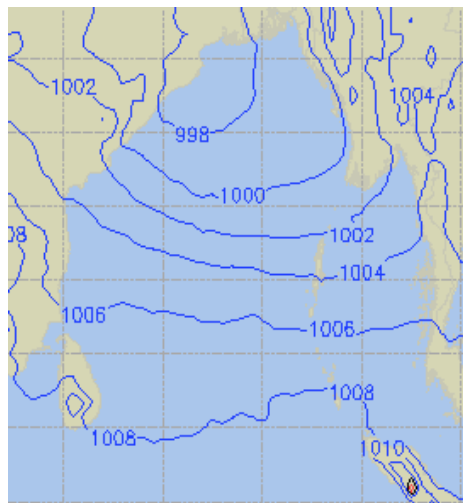
11 July 24 Thu (Probability 80%)



12 July 24 Fri (Probability 70%)



13 July 24 Sat (Probability 60%)



14 July 24 Sun (Probability 50%)

